

V&V Reference Report

L2 ASCDS Version : 8.4.4

Observation 8949 - L2 Version 2
Chandra X-Ray Center

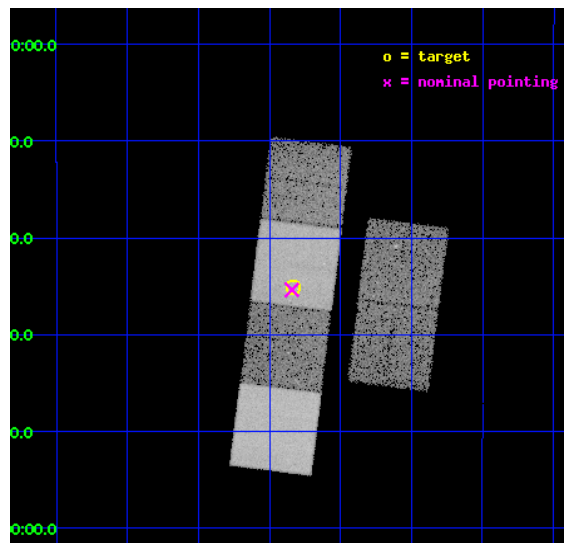
L2 Processing Date : May 25 2012

Contents

1	Front	2
2	OBI	3
2.1	OBI	3
2.1.1	Images	3
2.1.2	Bias	3
2.1.3	Parameters	4
2.1.4	Events	4
2.2	Compared Parameters	5
2.3	Aspect	6
2.4	Star Slots	9
2.4.1	Slot 3	9
2.4.2	Slot 4	10
2.4.3	Slot 5	11
2.4.4	Slot 6	12
2.4.5	Slot 7	13
2.5	FID Slots	14
2.5.1	Slot 0	14
2.5.2	Slot 1	15
2.5.3	Slot 2	16
A	Summary	17
A.1	Status	17
A.2	Comments	17

1 Front

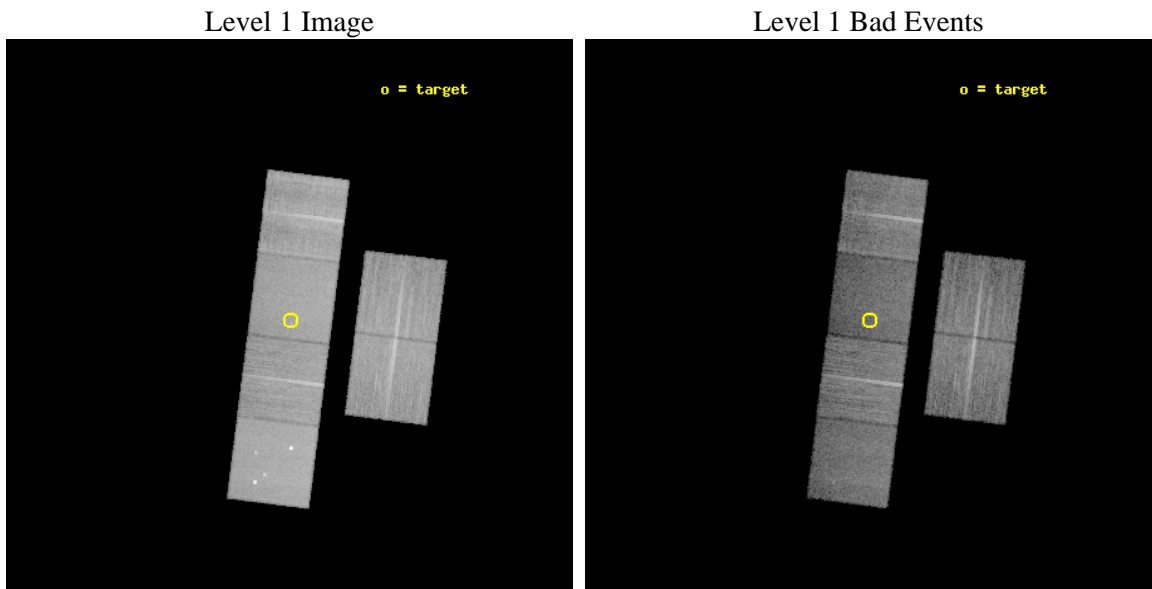
seq_num	300205	Sequence number
obs_id	8949	Observation id
title	A Chandra Legacy Survey of Dynamically Active Globular Clusters	Pr
observer	Prof. David Pooley	Principal investigator
object	NGC 6539	Source name
dtcycle	0	
cycle	P	events from which exps? Prim/Second/Both
ra_targ	271.2075	Observer's specified target RA [deg]
dec_targ	-7.585833	Observer's specified target Dec [deg]
ra_nom	271.21059810776	Nominal RA [deg]
dec_nom	-7.5895773318574	Nominal Dec [deg]
roll_nom	277.15705039575	Nominal Roll [deg]
revision	2	Processing version of data
ontime	15235.199943304	Sum of GTIs [s]
livetime	15042.282668086	Livetime [s]
ontime2	15231.959102511	Sum of GTIs [s]
ontime3	15231.958983004	Sum of GTIs [s]
ontime5	15235.199943304	Sum of GTIs [s]
ontime6	15235.199943304	Sum of GTIs [s]
ontime7	15235.199943304	Sum of GTIs [s]
ontime8	15235.199943304	Sum of GTIs [s]
l2events	187485	Number of level 2 events



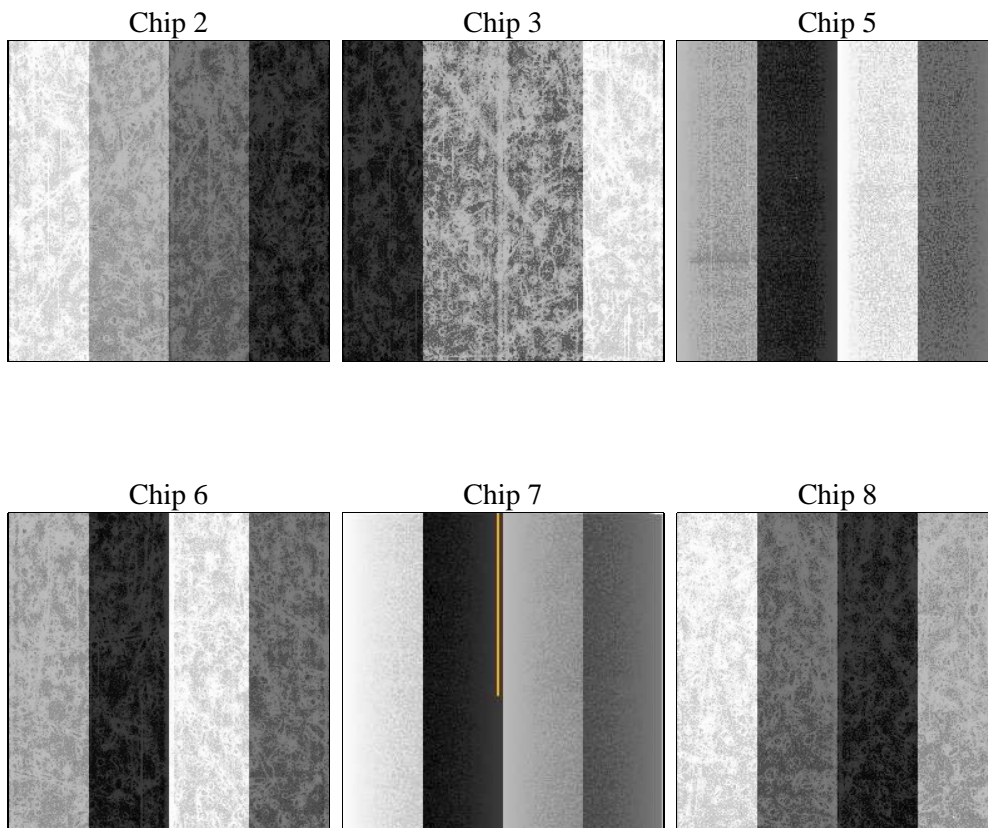
2 OBI

2.1 OBI

2.1.1 Images



2.1.2 Bias



2.1.3 Parameters

obi_num	0	Obi number	sched_exp_time	15100.000000	[s] Scheduled observation exposure time
ascdsver	8.4.4	Processing system revision	ontime	15235.199943304	Sum of GTIs [s]
caldbver	4.4.9	 	ontime2	15231.959102511	Sum of GTIs [s]
date	2012-05-25T06:12:34	Date and time of file creation	ontime3	15231.958983004	Sum of GTIs [s]
revision	2	Processing version of data	ontime5	15235.199943304	Sum of GTIs [s]
			ontime6	15235.199943304	Sum of GTIs [s]
			ontime7	15235.199943304	Sum of GTIs [s]
			ontime8	15235.199943304	Sum of GTIs [s]
			l1events	864280	Number of level 1 events

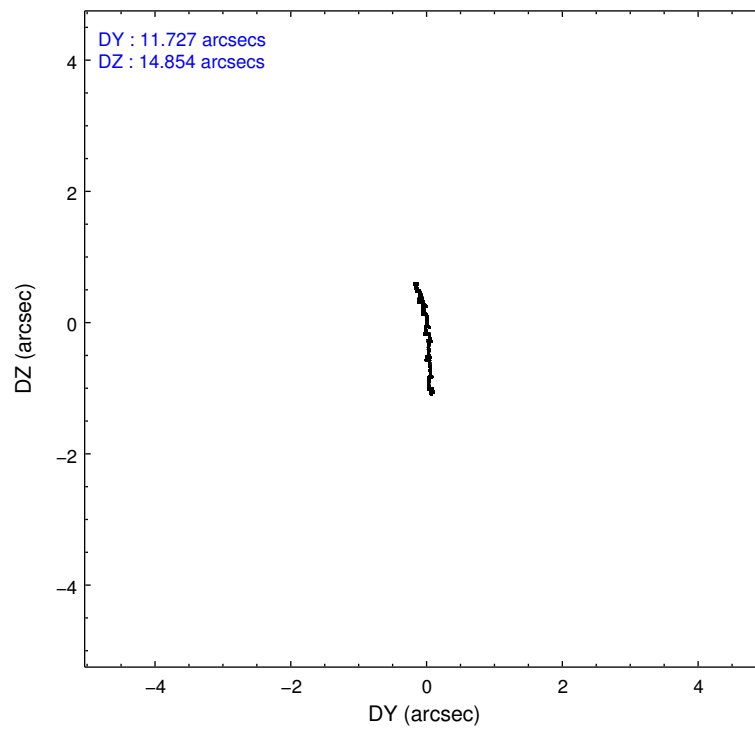
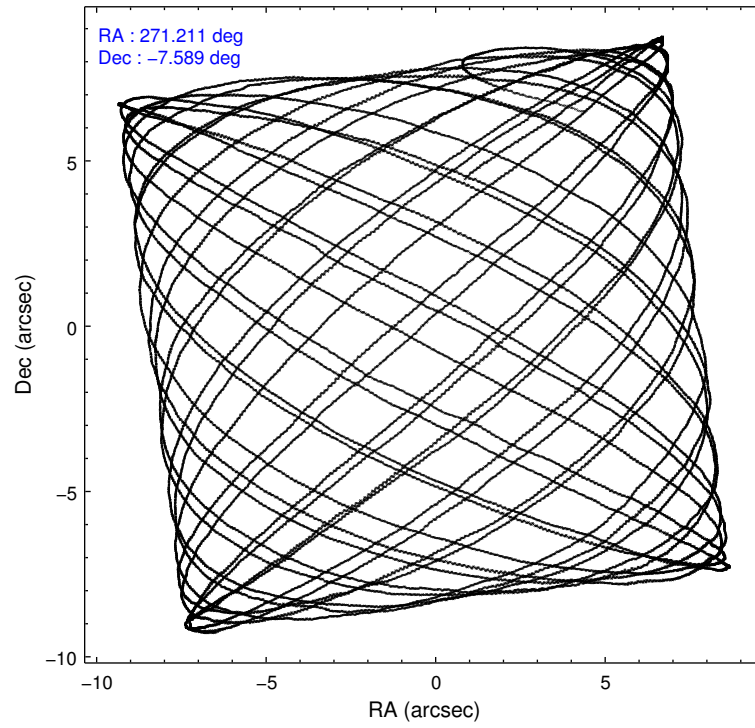
2.1.4 Events

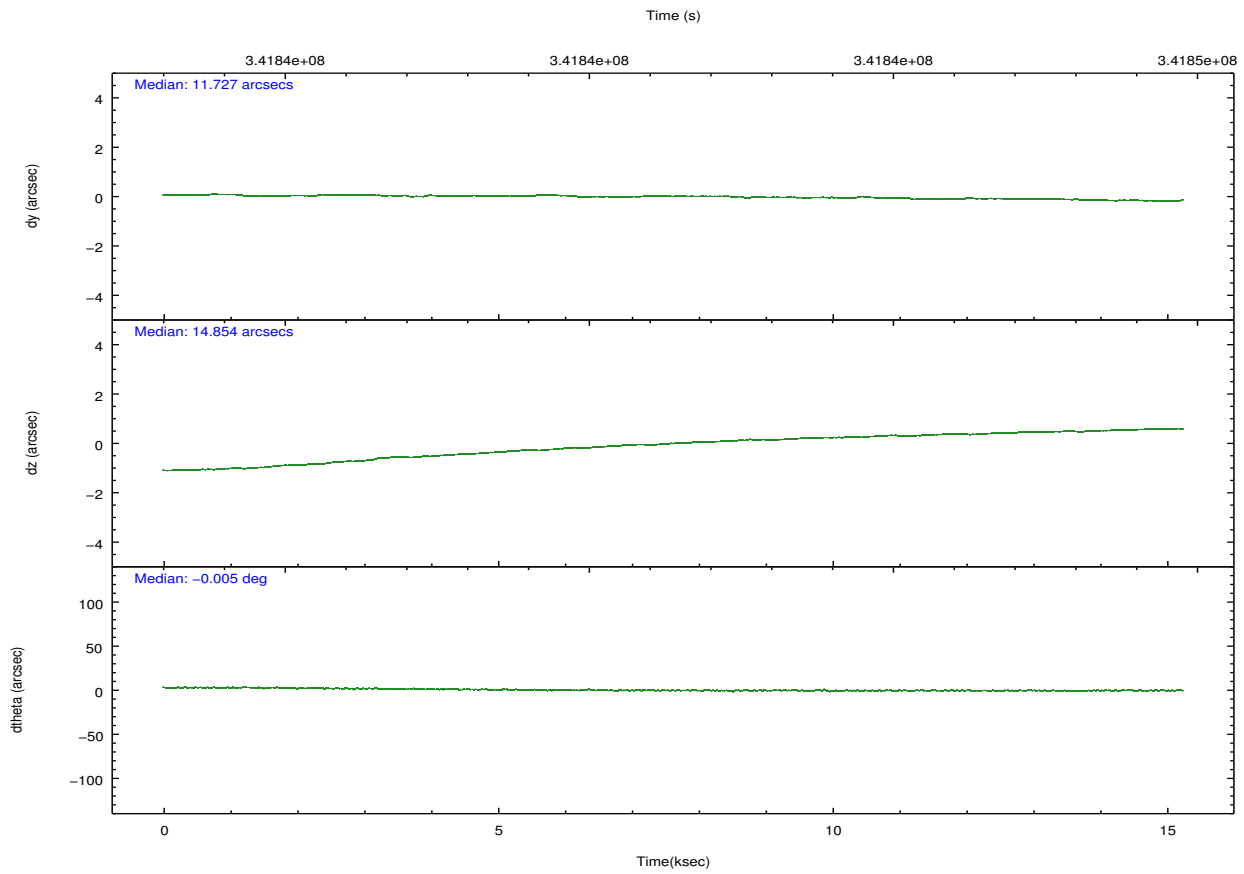
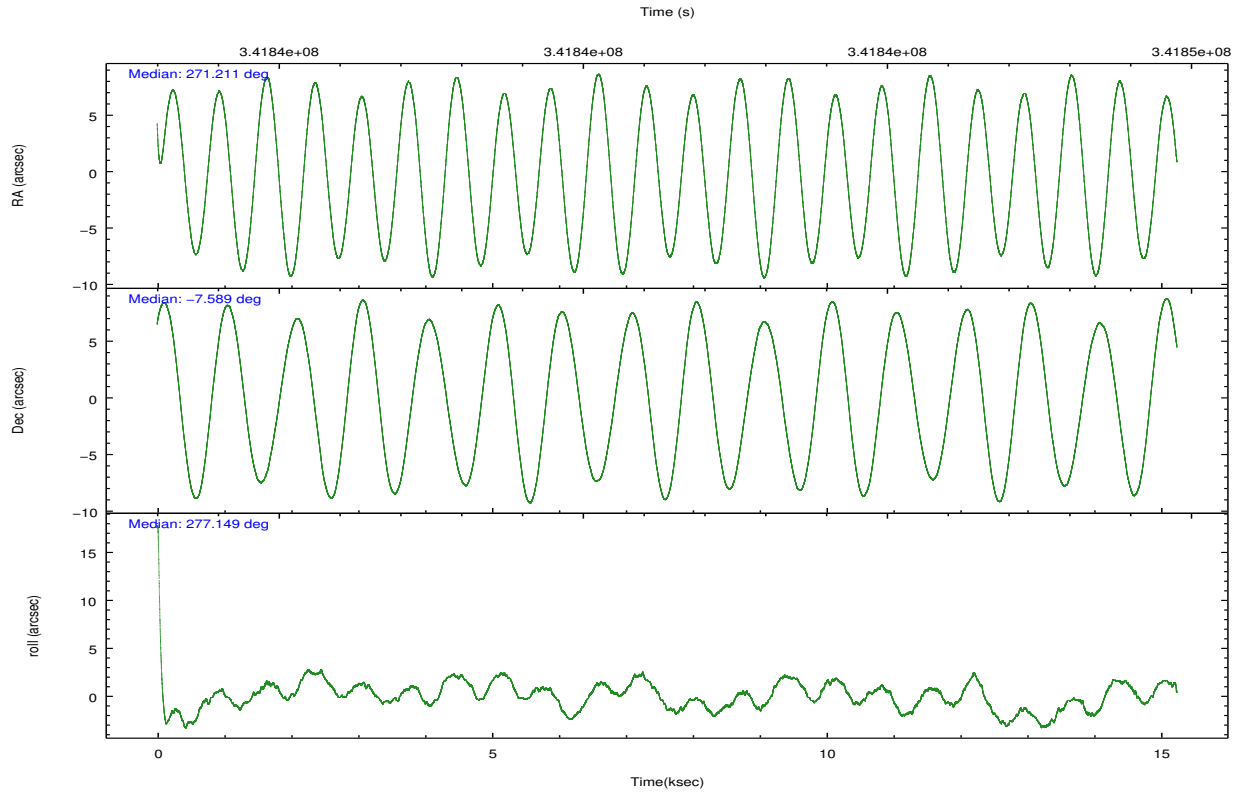
	ccd 2	ccd 3	ccd 5	ccd 6	ccd 7	ccd 8		ccd 2	ccd 3	ccd 5	ccd 6	ccd 7	ccd 8
level 1 events	132494	122895	179977	128257	141997	158660	grade 0 events	4428	4333	12790	4803	6242	11199
rejected events	120443	111184	89358	115169	78221	120659		3%	3%	7%	3%	4%	7%
rejected %	90%	90%	49%	89%	55%	76%	grade 1 events	91	80	480	58	181	117
								0%	0%	0%	0%	0%	0%
							grade 2 events	2992	2542	27348	2999	13333	9378
								2%	2%	15%	2%	9%	5%
							grade 3 events	1293	1389	3586	1384	5995	3970
								0%	1%	1%	1%	4%	2%
							grade 4 events	1293	1305	3484	1415	5916	3661
								0%	1%	1%	1%	4%	2%
							grade 5 events	4227	5054	13974	5090	14949	7476
								3%	4%	7%	3%	10%	4%
							grade 6 events	2358	2414	45705	2808	34000	10780
								1%	1%	25%	2%	23%	6%
							grade 7 events	115812	105778	72610	109700	61381	112079
								87%	86%	40%	85%	43%	70%

2.2 Compared Parameters

Parameter	Planned	Actual	Parameter	Planned	Actual
Instrument	ACIS	ACIS	Obspar format version number	7	7
Detector	ACIS-235678	ACIS-235678	Obspar file type	PREDICTED	ACTUAL
Grating	NONE	NONE	Obspar update status	NONE	UPDATED
Data mode	VFAINT	VFAINT	CCD I0 on	N	N
Observation mode	POINTING	POINTING	CCD I1 on	N	N
[deg] Pointing RA	271.193608	271.2105981077605	CCD I2 on	O1	Y
[deg] Pointing Dec	-7.568042	-7.589577331857391	CCD I3 on	O2	Y
[deg] Pointing Roll	276.998175	277.1570503957489	CCD S0 on	N	N
[mm] SIM focus pos	-0.684267	-0.6828225247311905	CCD S1 on	Y	Y
[mm] SIM defocus	0	0.001444936568705701	CCD S2 on	Y	Y
[mm] SIM translation stage pos	-190.132523	-190.1400660498719	CCD S3 on	Y	Y
[mm] SIM translation stage offset	0	0.00754346686406393	CCD S4 on	Y	Y
[s] Observation start time (MET)	341833885.184000	341832646.8223	CCD S5 on	N	N
Observation start date	2008-10-31T09:50:20	2008-10-31T09:30:46	Number of optional ACIS chips dropped	0	0
[s] Observation end time (MET)	341848985.184000	341850052.34816	On-chip summing requested	N	N
Observation end date	2008-10-31T14:02:00	2008-10-31T14:20:52	Subarray requested	NONE	NONE
Read mode	TIMED	TIMED	Alternating exposures requested	N	N
			[s] Primary exposure time	0.000000	3.2

2.3 Aspect



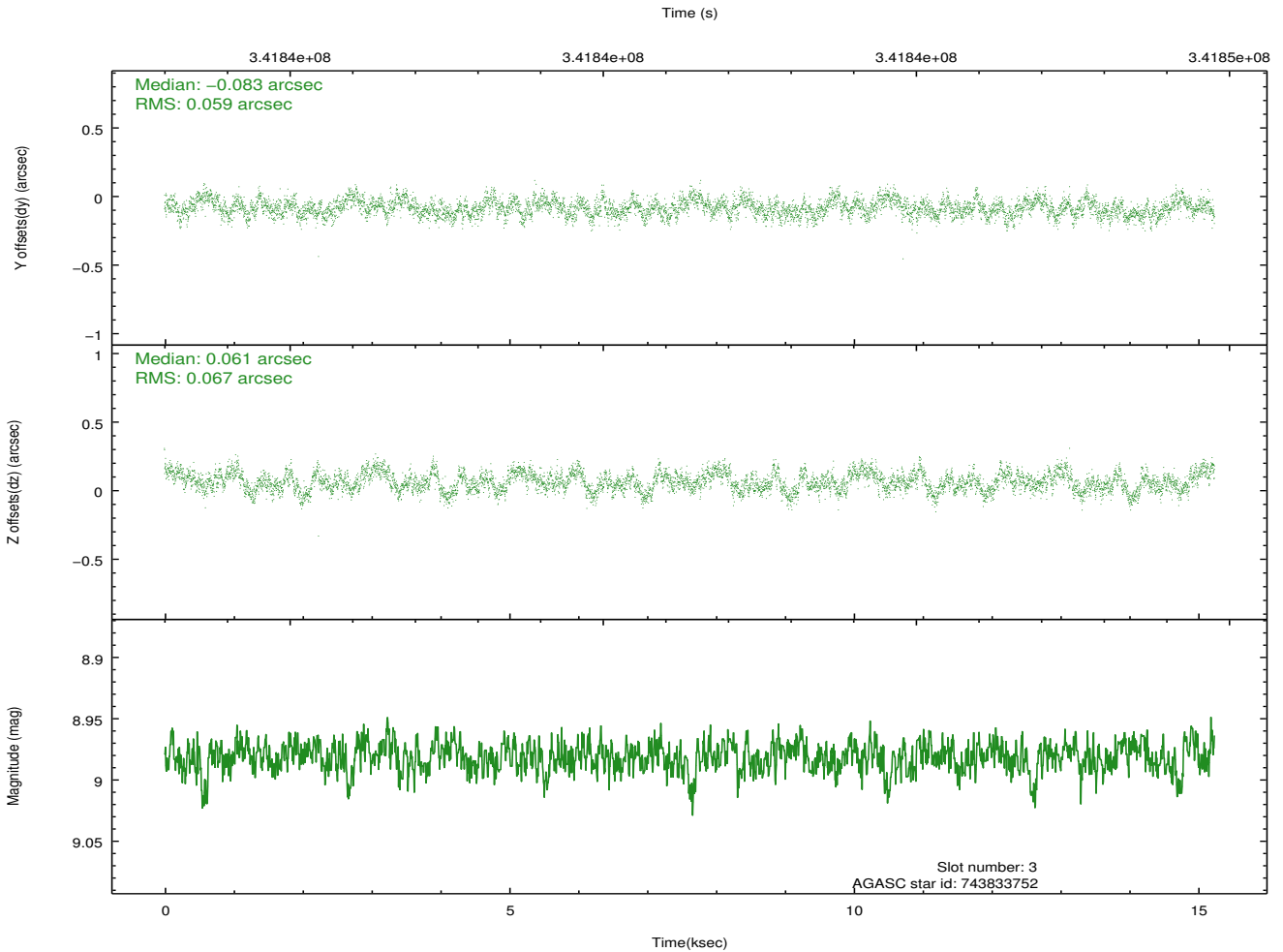
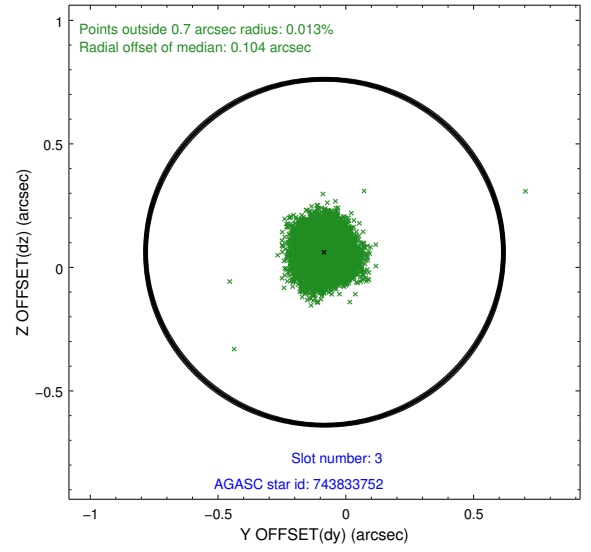
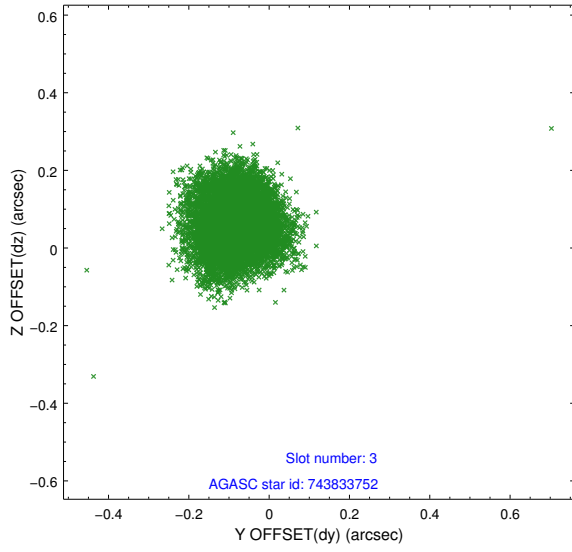


Slot Statistics

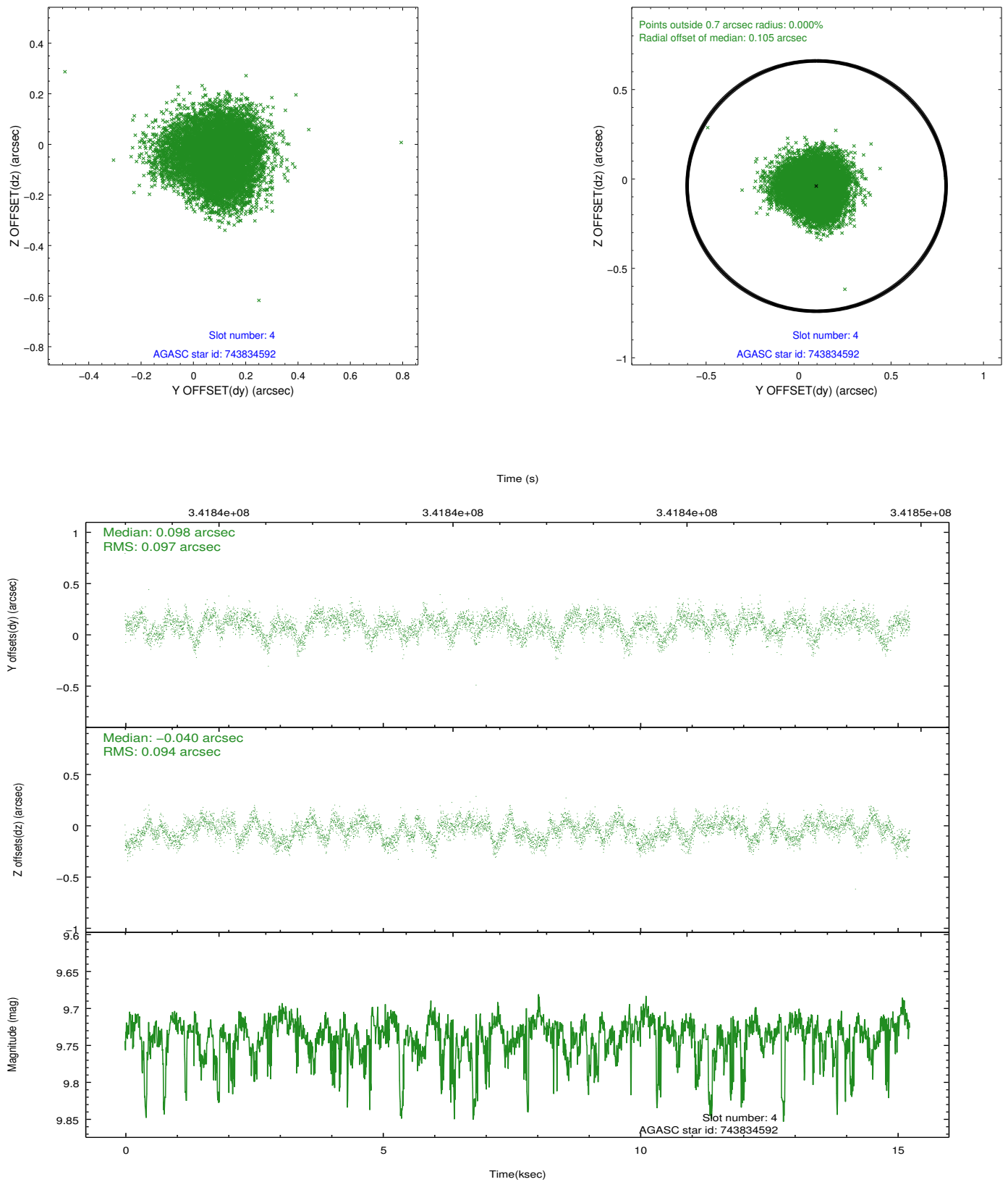
slot	status	id	mag	n_pts	med_dy	med_dz	dr1	dr2	ra	dec	mean_y	mean_z
0	FID	ACIS-S-2	6.88	3717	-0.047	-0.016	0.013	0.022	0.000000	0.000000	-764.62	-1736.14
1	FID	ACIS-S-4	6.97	3718	0.132	0.026	0.013	0.028	0.000000	0.000000	2148.69	172.11
2	FID	ACIS-S-5	7.00	3718	-0.120	-0.003	0.011	0.017	0.000000	0.000000	-1817.17	166.05
3	GUIDE	743833752	8.98	7428	-0.083	0.061	0.097	0.148	270.923759	-7.674570	264.21	-1002.32
4	GUIDE	743834592	9.74	7386	0.098	-0.040	0.146	0.223	271.521763	-8.057502	1892.58	946.37
5	GUIDE	743834744	8.51	7429	-0.145	-0.071	0.083	0.133	270.776899	-7.668398	179.08	-1519.83
6	GUIDE	743835552	7.26	7436	-0.050	-0.051	0.061	0.100	271.506696	-8.108608	2067.65	871.19
7	GUIDE	743836144	8.85	7431	0.184	0.101	0.087	0.142	270.822115	-8.250091	2277.65	-1612.52

2.4 Star Slots

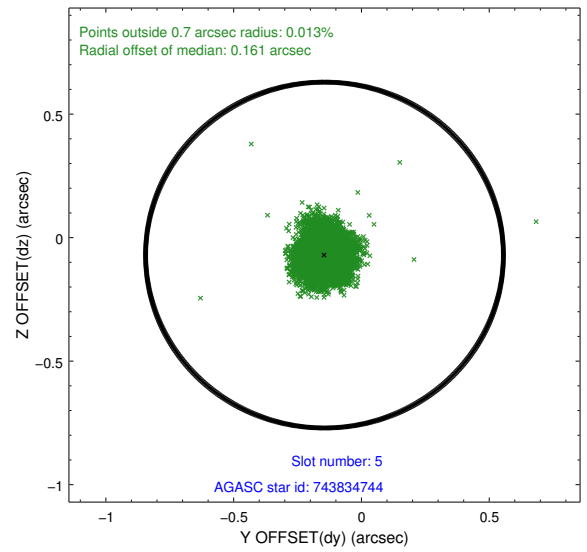
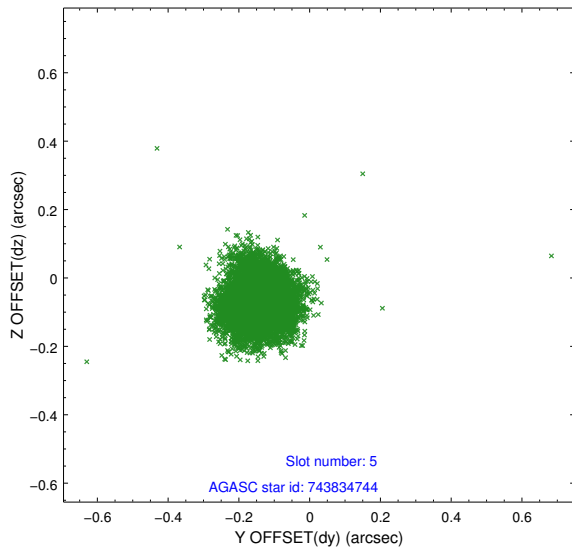
2.4.1 Slot 3



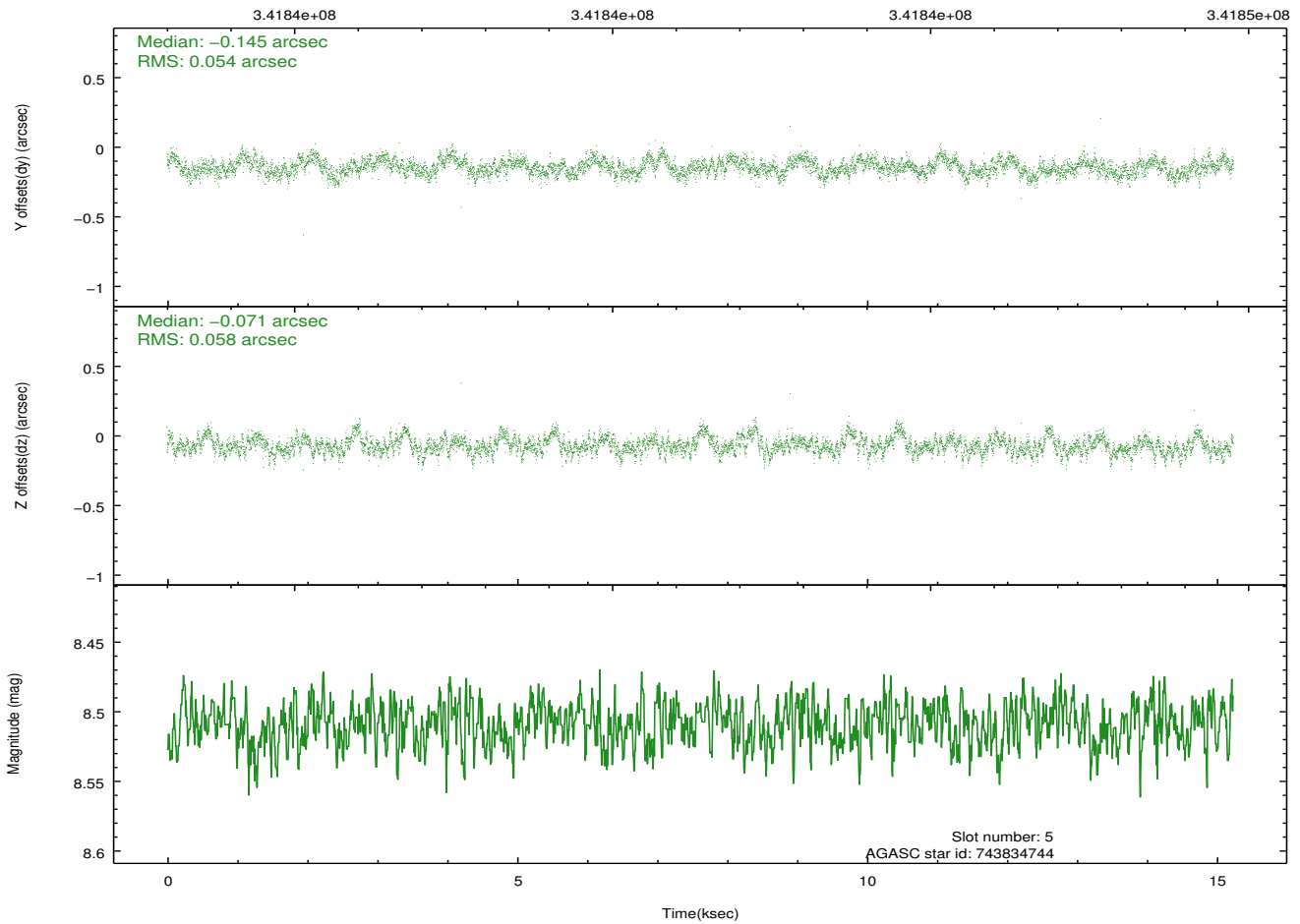
2.4.2 Slot 4



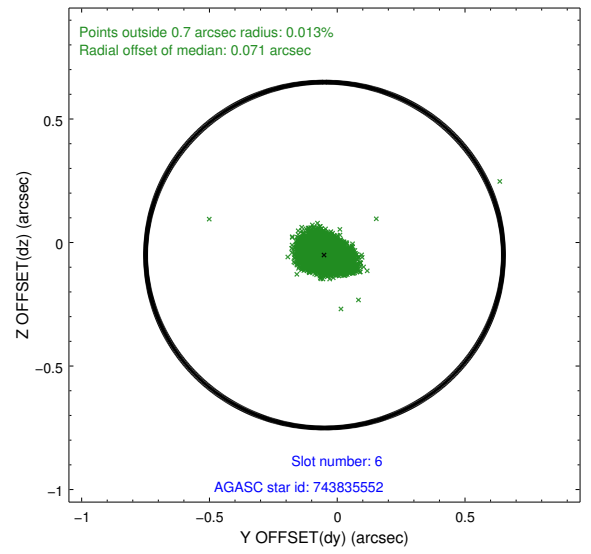
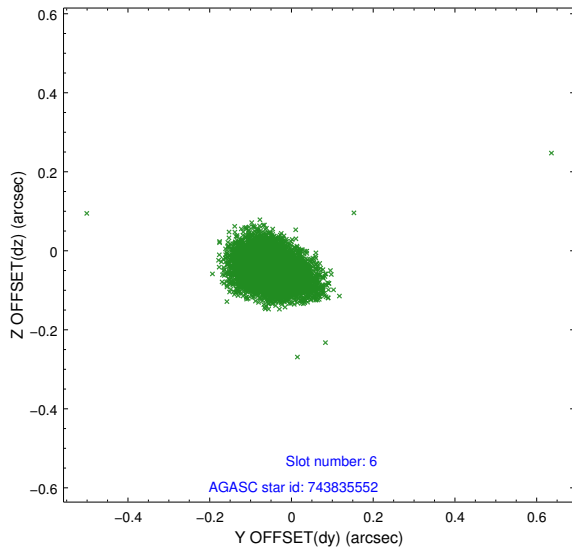
2.4.3 Slot 5



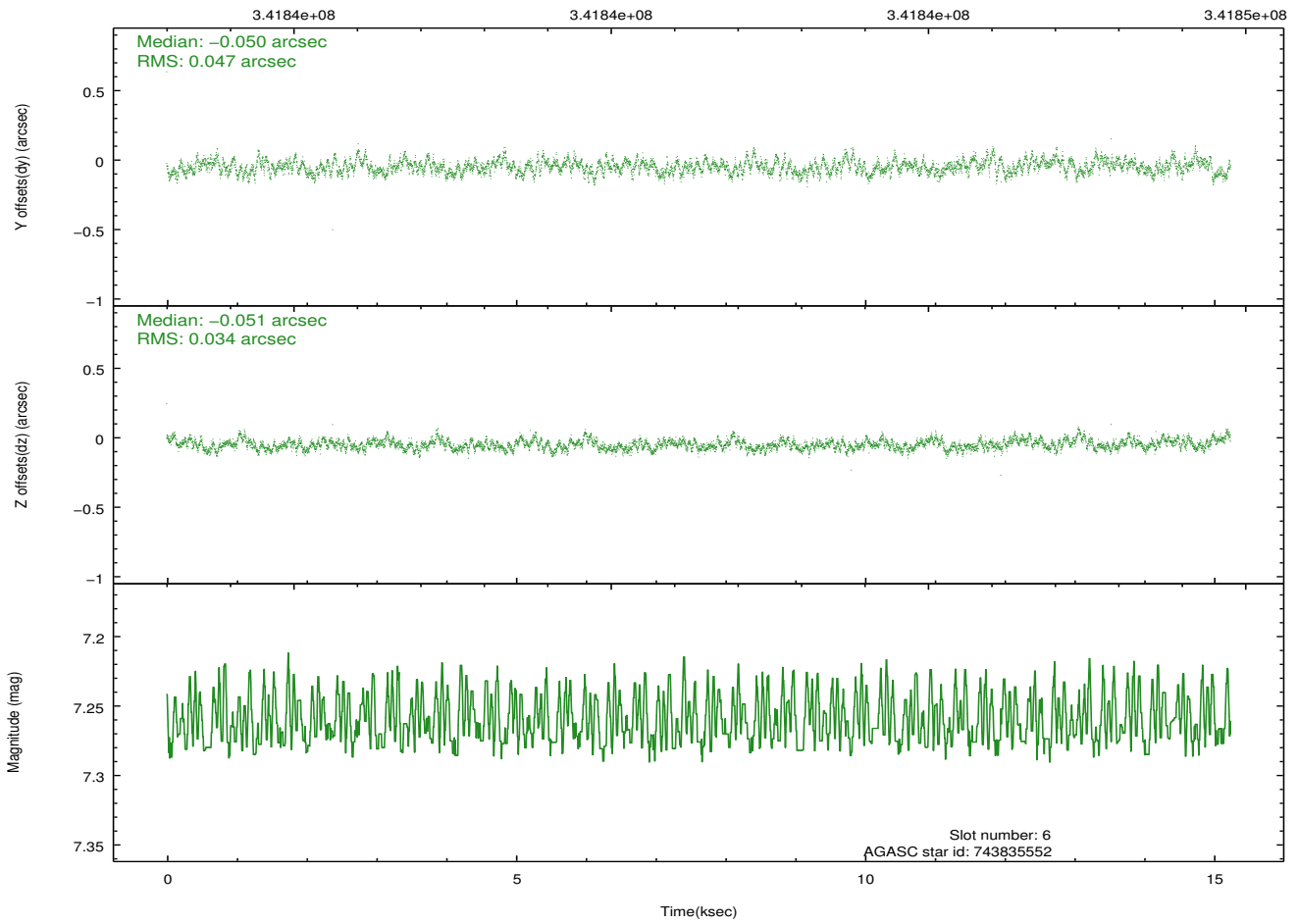
Time (s)



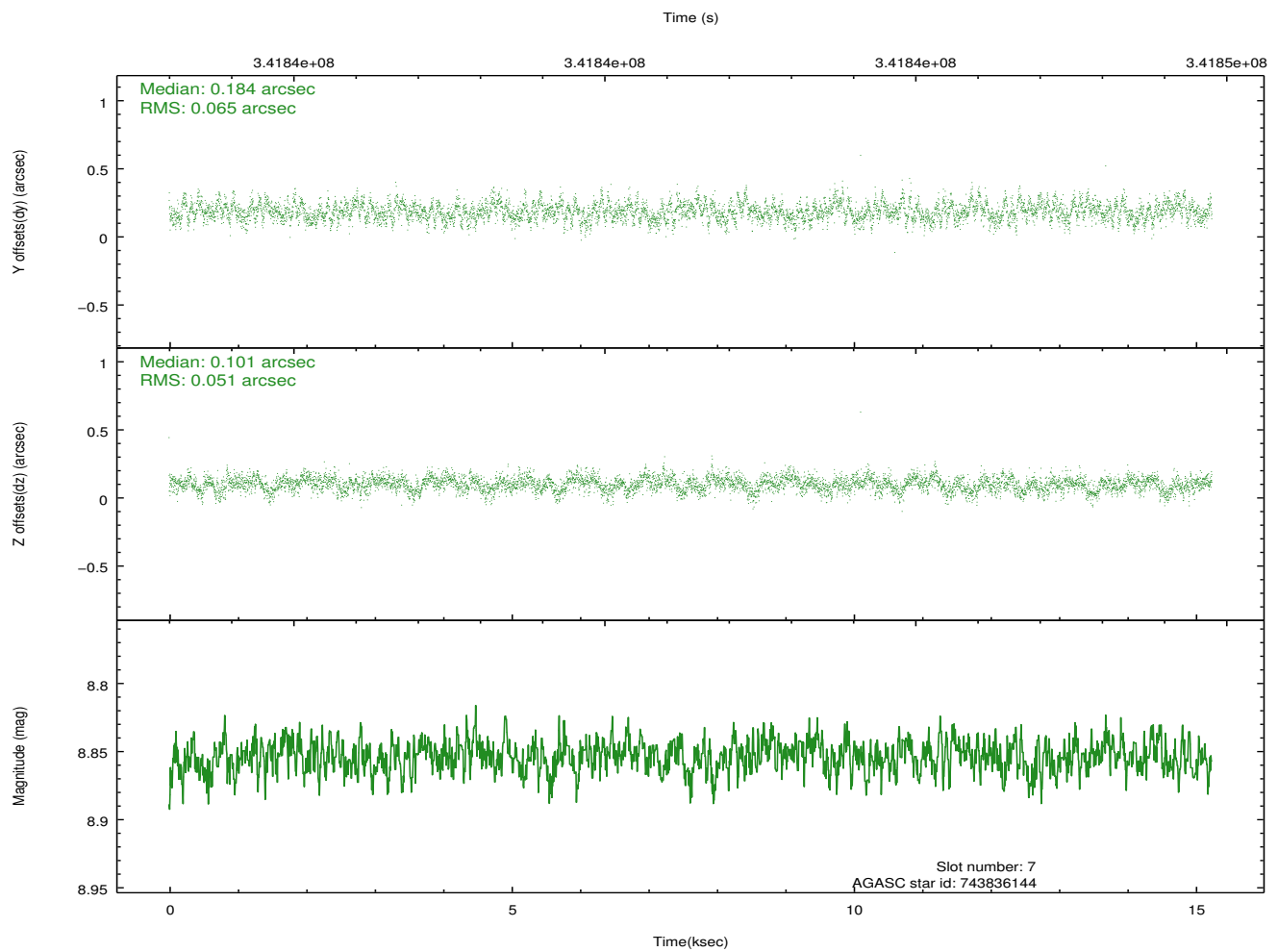
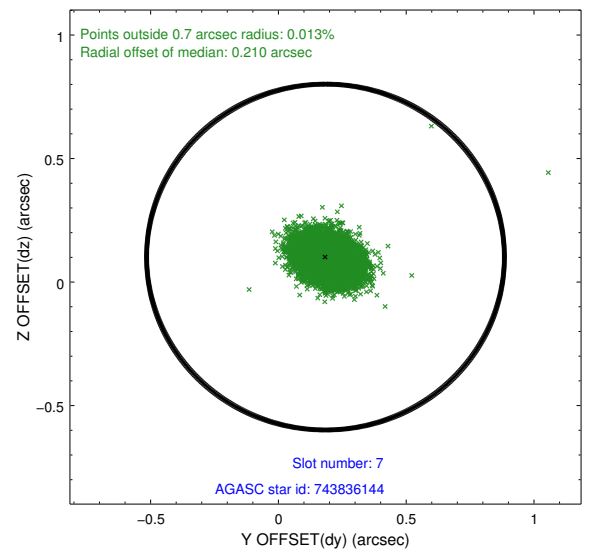
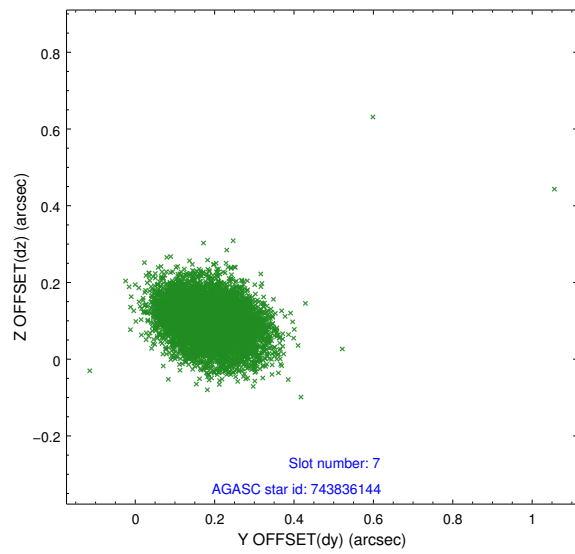
2.4.4 Slot 6



Time (s)

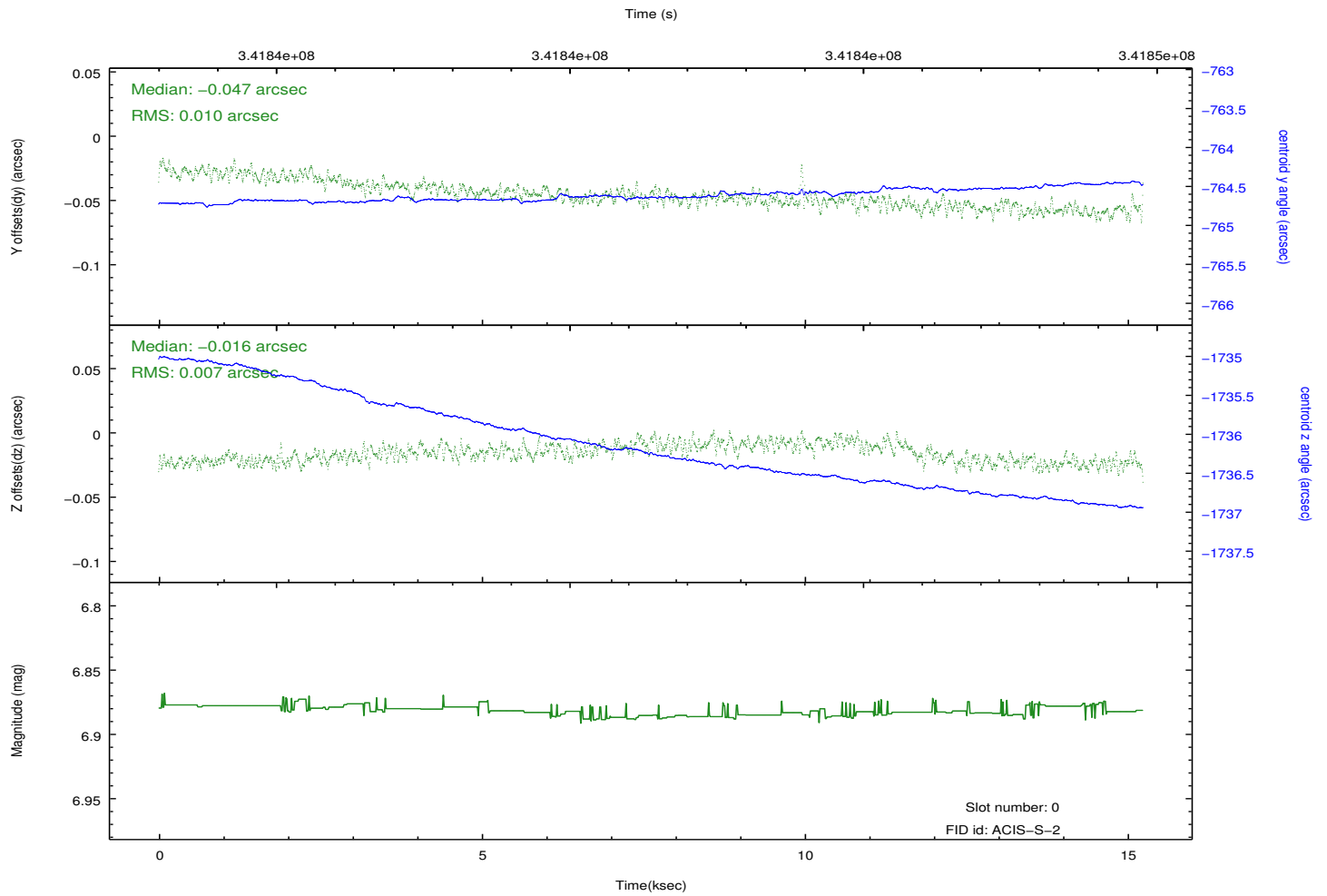
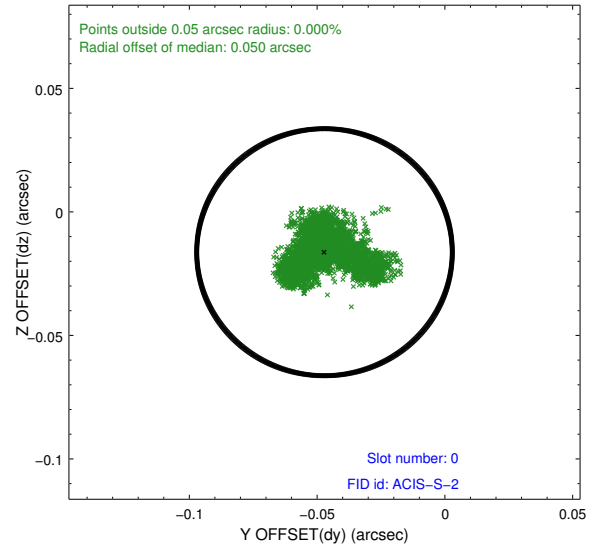
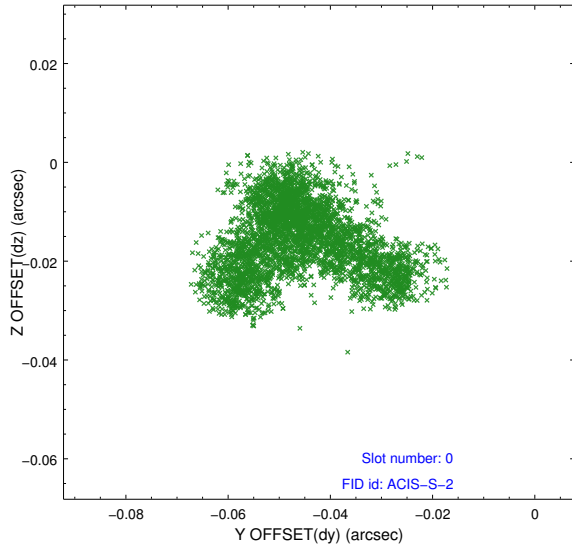


2.4.5 Slot 7

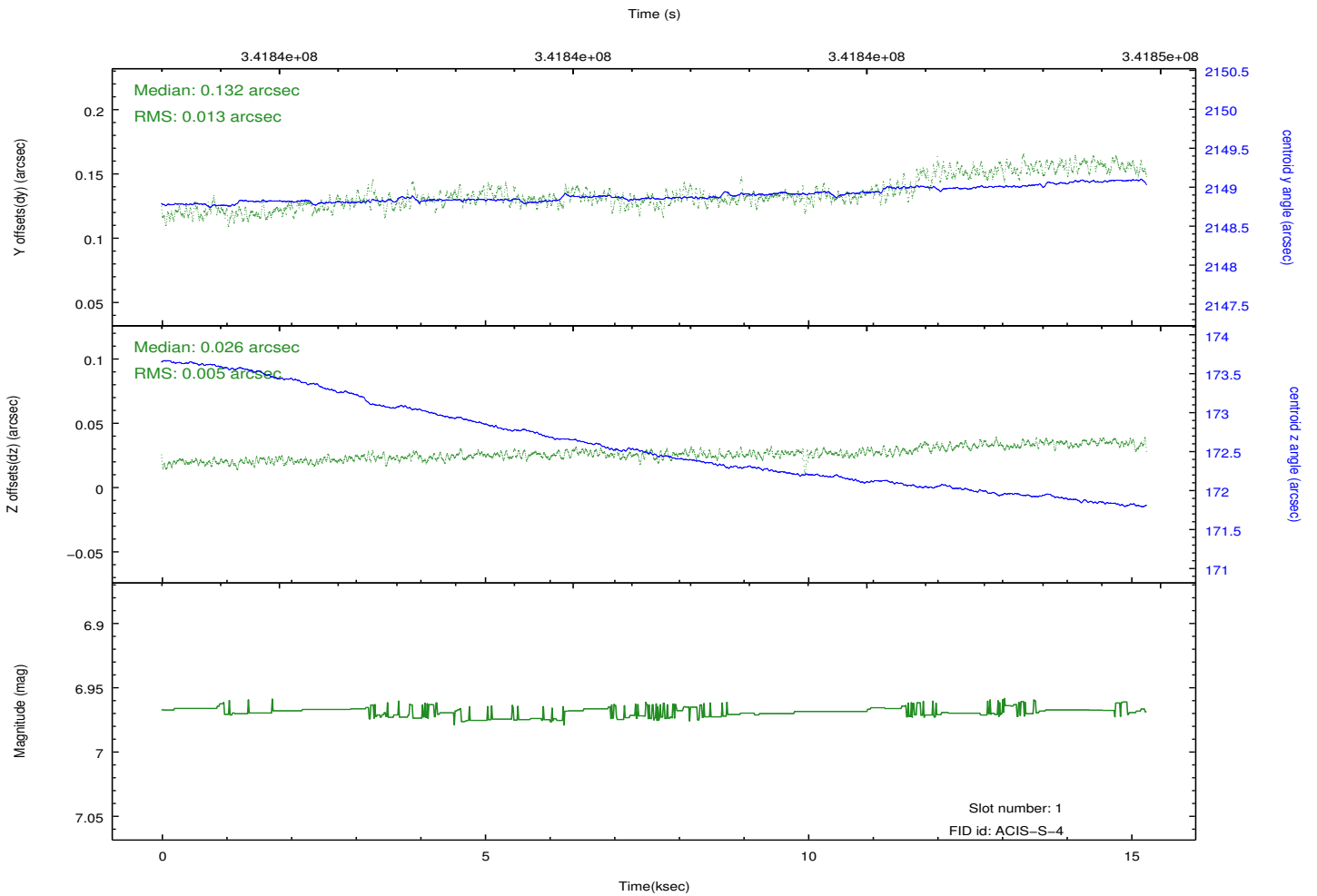
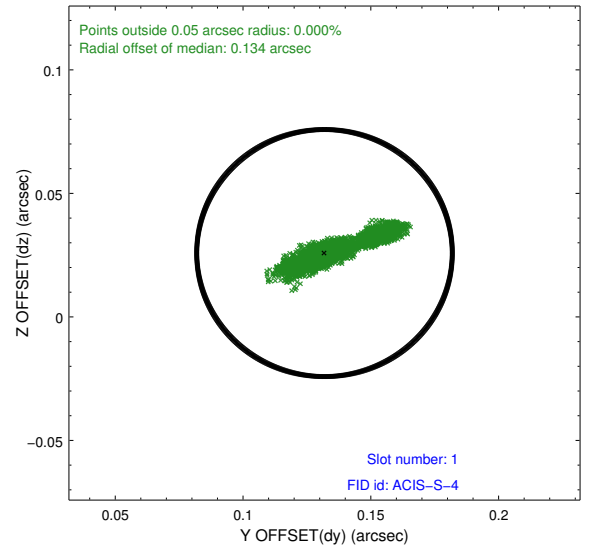
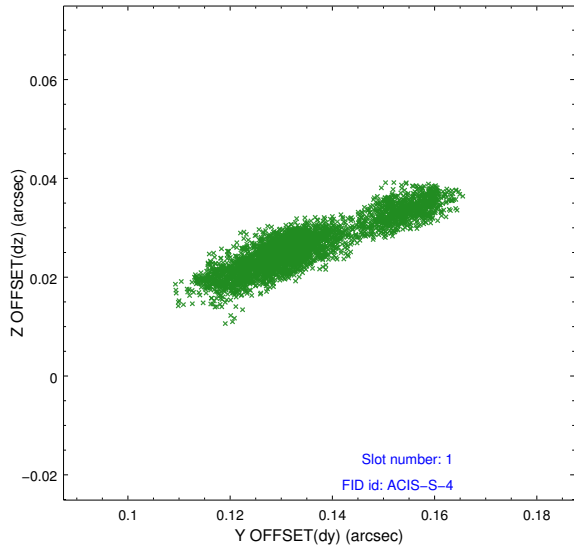


2.5 FID Slots

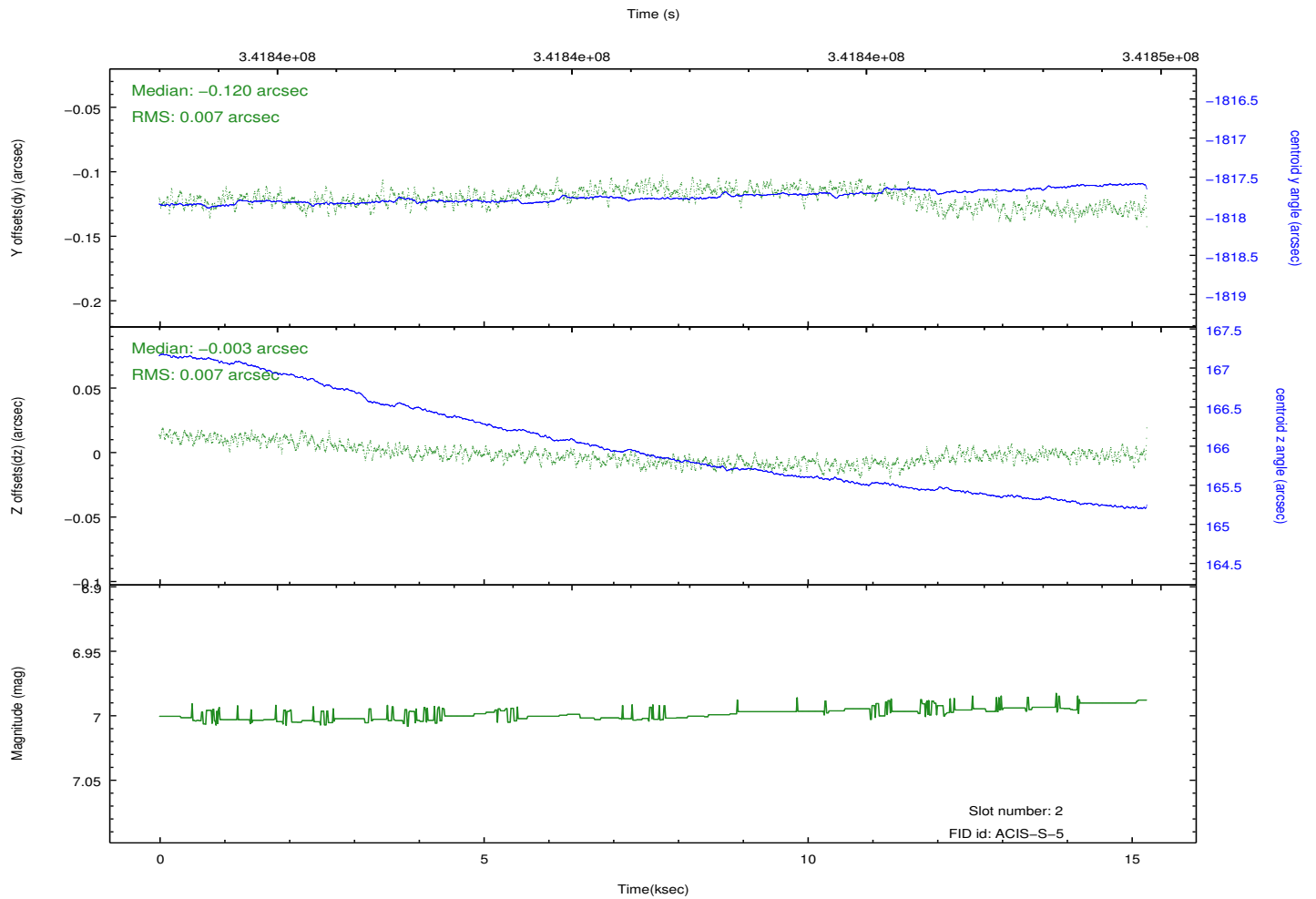
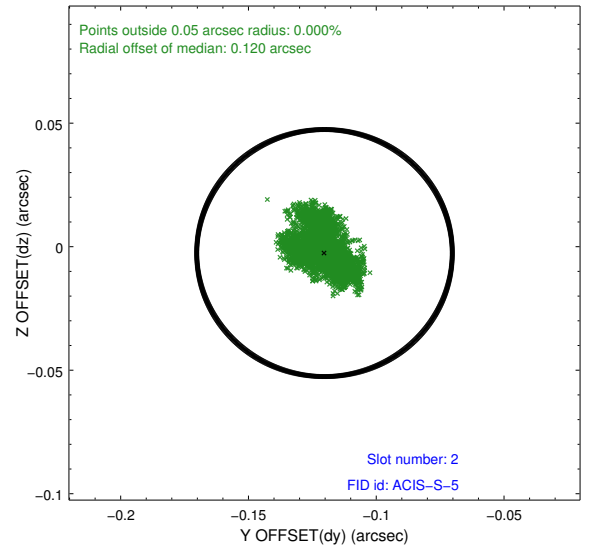
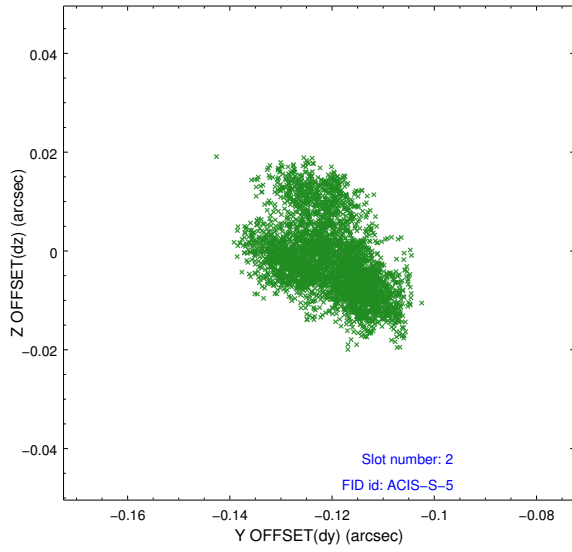
2.5.1 Slot 0



2.5.2 Slot 1



2.5.3 Slot 2



A Summary

A.1 Status

V&V Scientist	Jen Lauer
V&V Date (YYYY-MM-DD)	2012.06.01
V&V Edition	1
V&V Disposition and Status	OK
V&V Charge Time	15.2351999

A.2 Comments