

# V&V Reference Report

## L2 ASCDS Version : 8.4.4

Observation 8989 - L2 Version 2  
Chandra X-Ray Center

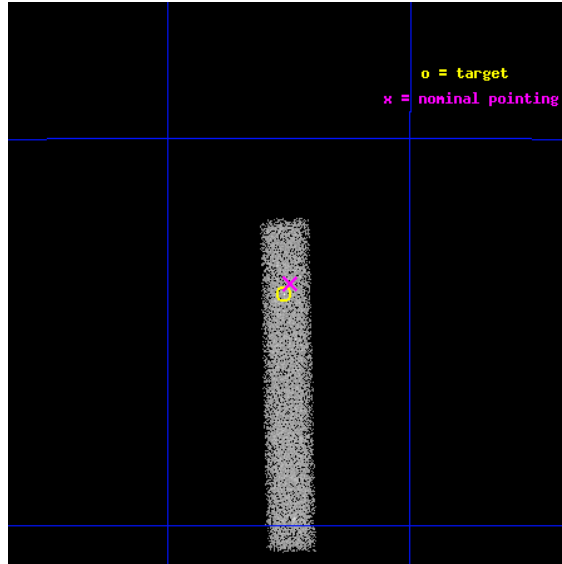
L2 Processing Date : May 11 2012

## Contents

<b>1</b>	<b>Front</b>	<b>2</b>
<b>2</b>	<b>OBI</b>	<b>3</b>
2.1	OBI . . . . .	3
2.1.1	Images . . . . .	3
2.1.2	Bias . . . . .	3
2.1.3	Parameters . . . . .	4
2.1.4	Events . . . . .	4
2.2	Compared Parameters . . . . .	5
2.3	Aspect . . . . .	6
2.4	Star Slots . . . . .	9
2.4.1	Slot 3 . . . . .	9
2.4.2	Slot 4 . . . . .	10
2.4.3	Slot 5 . . . . .	11
2.4.4	Slot 6 . . . . .	12
2.4.5	Slot 7 . . . . .	13
2.5	FID Slots . . . . .	14
2.5.1	Slot 0 . . . . .	14
2.5.2	Slot 1 . . . . .	15
2.5.3	Slot 2 . . . . .	16
<b>A</b>	<b>Summary</b>	<b>17</b>
A.1	Status . . . . .	17
A.2	Comments . . . . .	17

# 1 Front

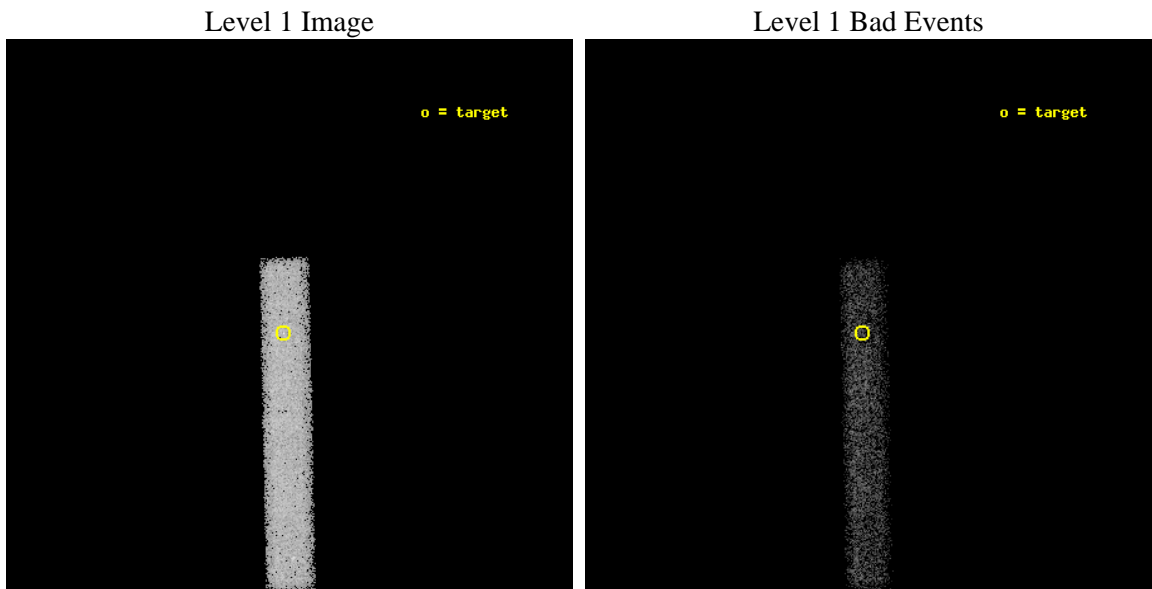
seq_num	400840	Sequence number
obs_id	8989	Observation id
title	Following a black hole candidate X-ray transient to quiescence	Pro
observer	dr Peter Jonker	Principal investigator
object	H 1743-322	Source name
dtcycle	0	&#160
cycle	P	events from which exps? Prim/Second/Both
ra_targ	266.565	Observer's specified target RA [deg]
dec_targ	-32.2333	Observer's specified target Dec [deg]
ra_nom	266.56209226922	Nominal RA [deg]
dec_nom	-32.229150454325	Nominal Dec [deg]
roll_nom	88.855076900656	Nominal Roll [deg]
revision	2	Processing version of data
ontime	22655.598649621	Sum of GTIs [s]
livetime	20547.432114657	Livetime [s]
ontime7	22655.598649621	Sum of GTIs [s]
l2events	18266	Number of level 2 events



## 2 OBI

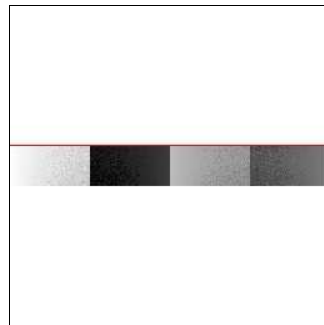
### 2.1 OBI

#### 2.1.1 Images



#### 2.1.2 Bias

Chip 7



### 2.1.3 Parameters

obi_num	0	Obi number	sched_exp_time	22500.000000	[s] Scheduled observation exposure time
ascdsver	8.4.4	Processing system revision	ontime	22655.598649621	Sum of GTIs [s]
caldbver	4.4.9	&#160	ontime7	22655.598649621	Sum of GTIs [s]
date	2012-05-11T13:23:40	Date and time of file creation	l1events	42038	Number of level 1 events
revision	2	Processing version of data			

### 2.1.4 Events

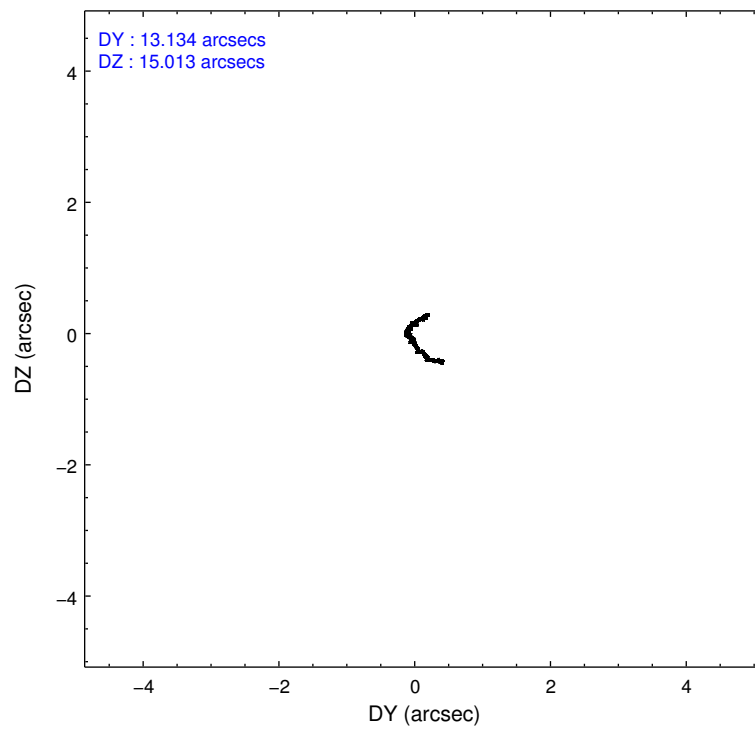
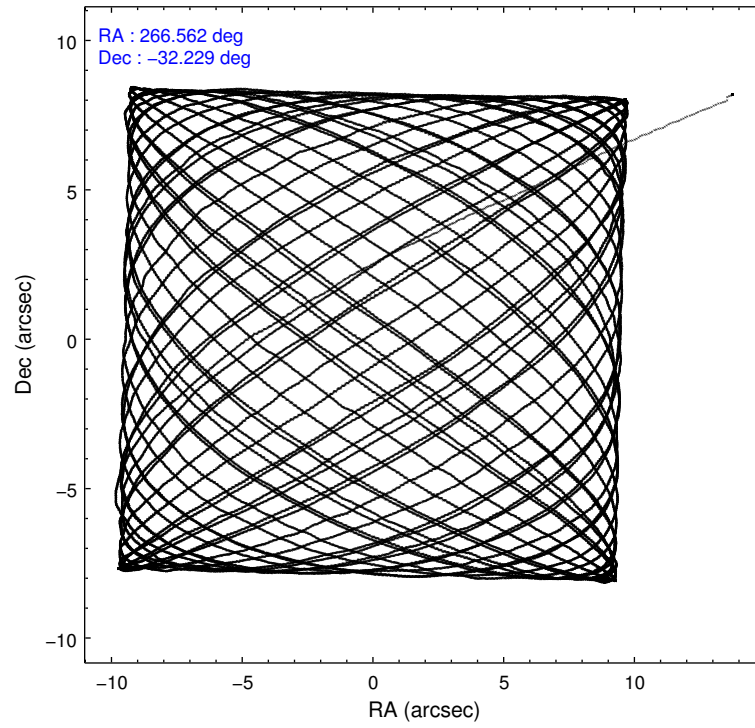
	<b>ccd 7</b>
level 1 events	42038
rejected events	23089
rejected %	54%

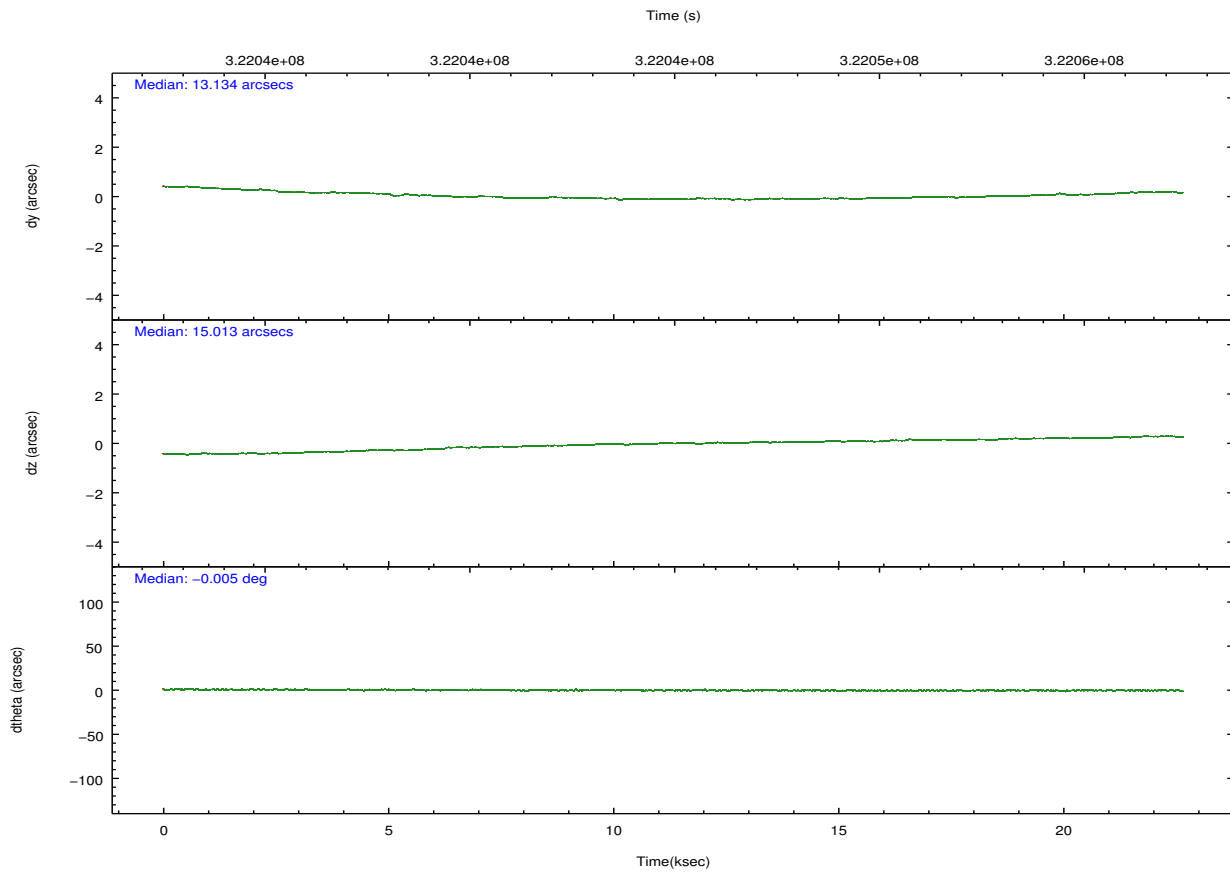
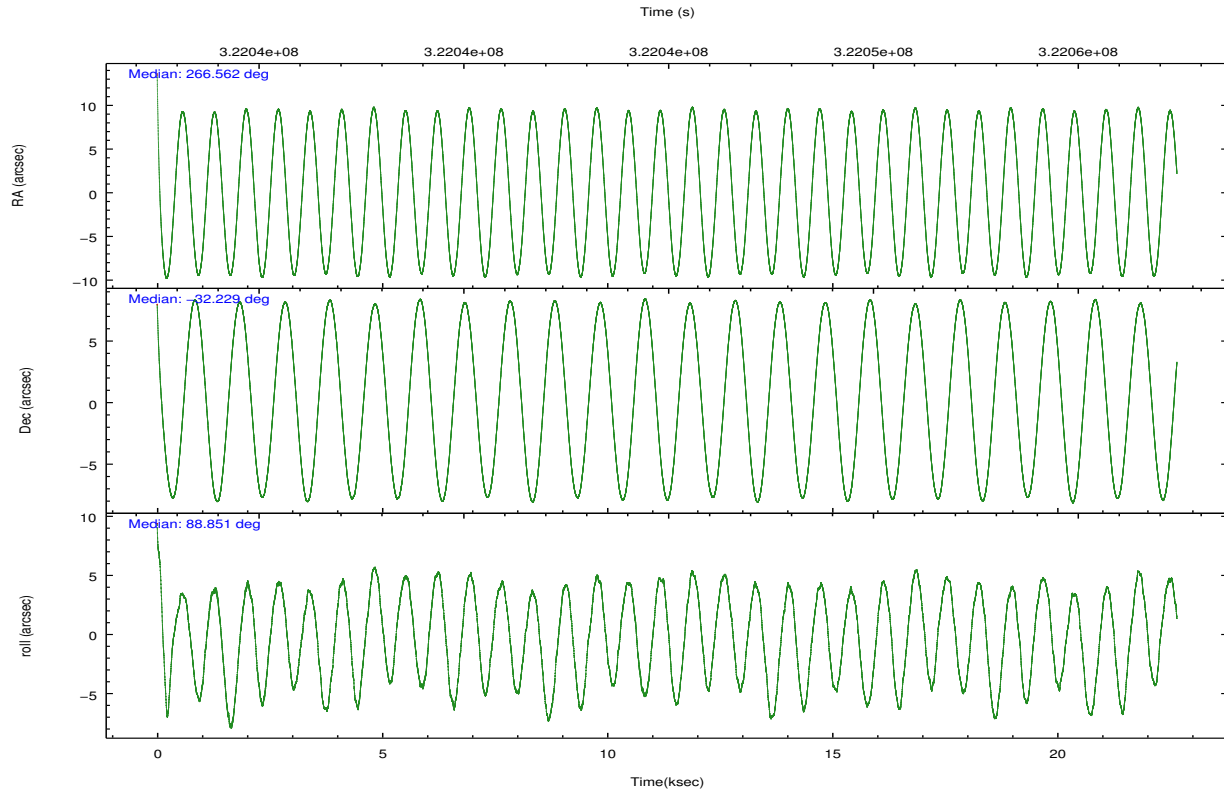
	<b>ccd 7</b>
grade 0 events	1929
	4%
grade 1 events	48
	0%
grade 2 events	3934
	9%
grade 3 events	2460
	5%
grade 4 events	2401
	5%
grade 5 events	3949
	9%
grade 6 events	8976
	21%
grade 7 events	18341
	43%

## 2.2 Compared Parameters

Parameter	Planned	Actual	Parameter	Planned	Actual
Instrument	ACIS	ACIS	Obspar format version number	7	7
Detector	ACIS-7	ACIS-7	Obspar file type	PREDICTED	ACTUAL
Grating	NONE	NONE	Obspar update status	NONE	UPDATED
Data mode	FAINT	FAINT	Number of optional ACIS chips dropped	0	0
Observation mode	POINTING	POINTING	On-chip summing requested	N	N
[deg] Pointing RA	266.578071	266.5620922692203	Subarray requested	CUSTOM	1/8
[deg] Pointing Dec	-32.252884	-32.22915045432534	Subarray start row	449	449
[deg] Pointing Roll	88.706977	88.85507690065627	Subarray row count	128	128
[mm] SIM focus pos	-0.684267	-0.6828225247311905	Alternating exposures requested	N	N
[mm] SIM defocus	0	0.001444936568705701	[s] Primary exposure time	0.000000	0.4
[mm] SIM translation stage pos	-190.132523	-190.145094680475			
[mm] SIM translation stage offset	0	0.01257209746719923			
[s] Observation start time (MET)	322033777.184000	322032694.94325			
Observation start date	2008-03-16T05:48:32	2008-03-16T05:31:34			
[s] Observation end time (MET)	322056277.184000	322057335.43195			
Observation end date	2008-03-16T12:03:32	2008-03-16T12:22:15			
Read mode	TIMED	TIMED			

## 2.3 Aspect



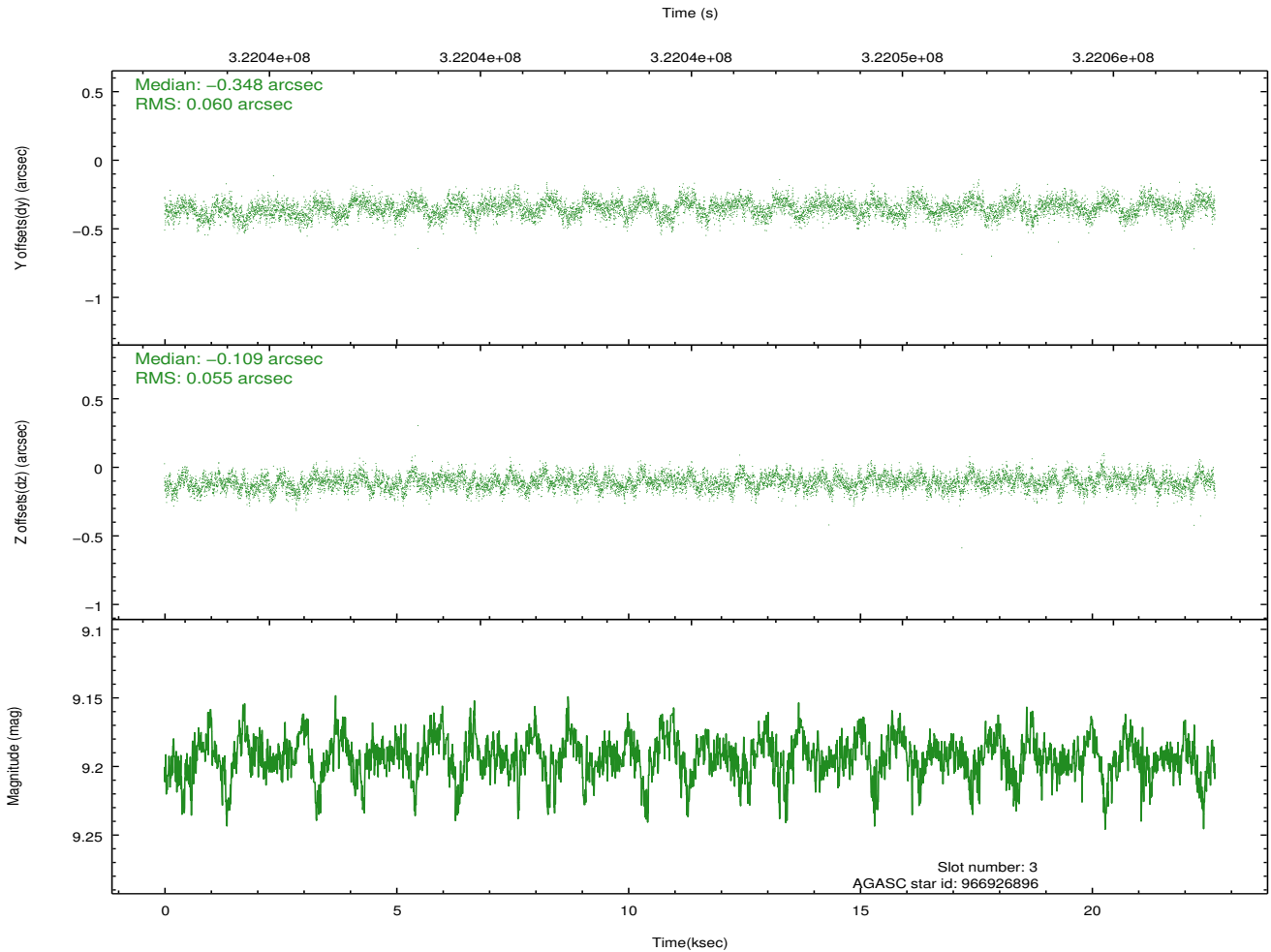
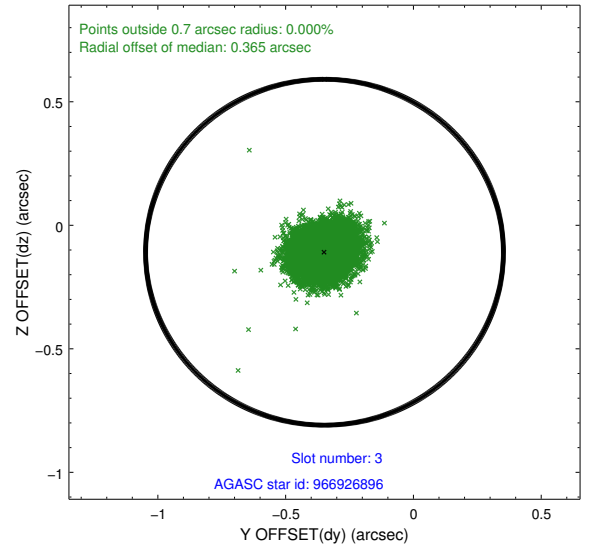
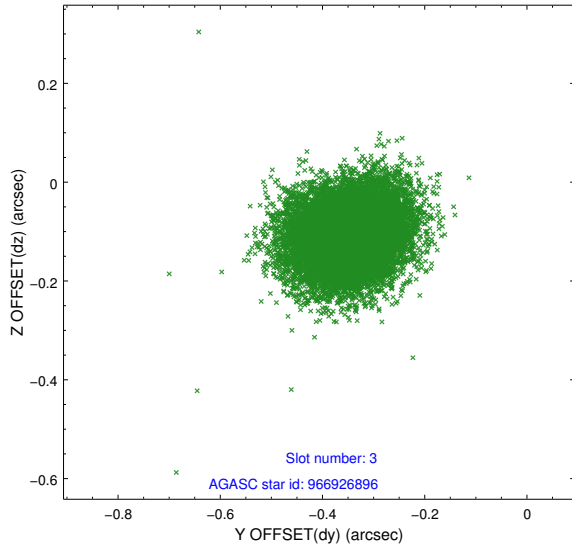


### Slot Statistics

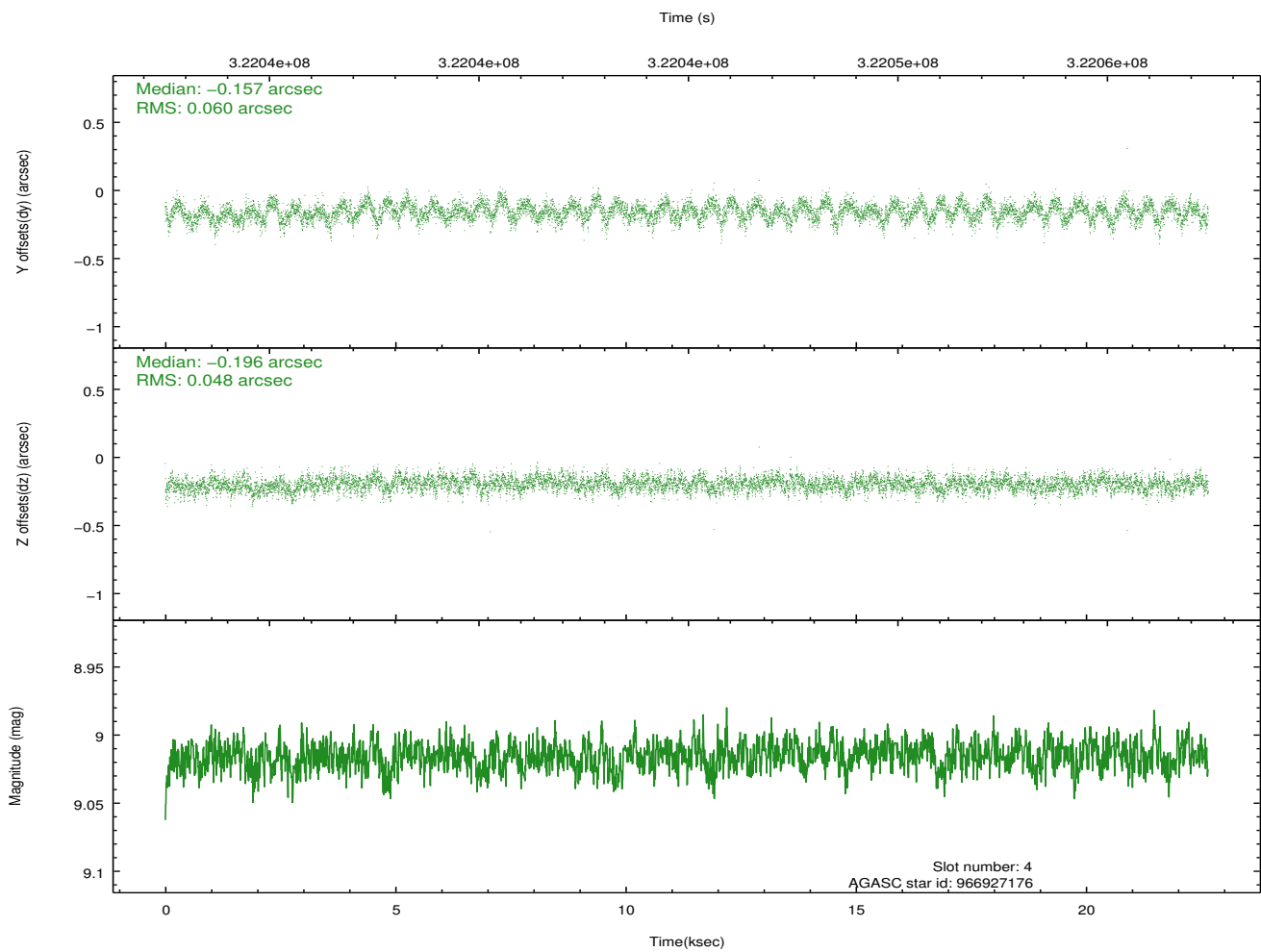
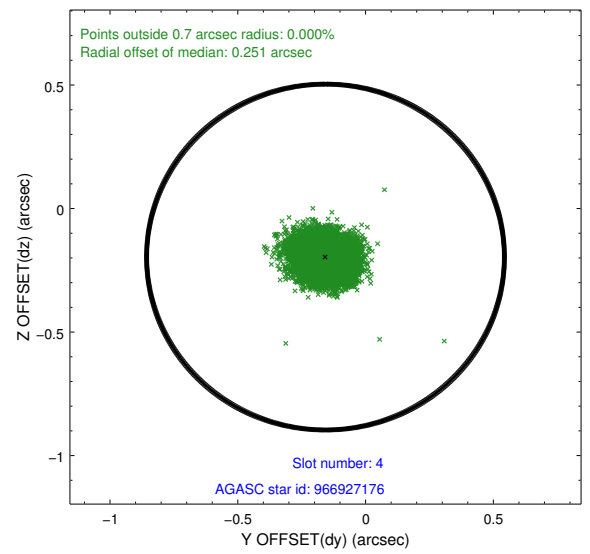
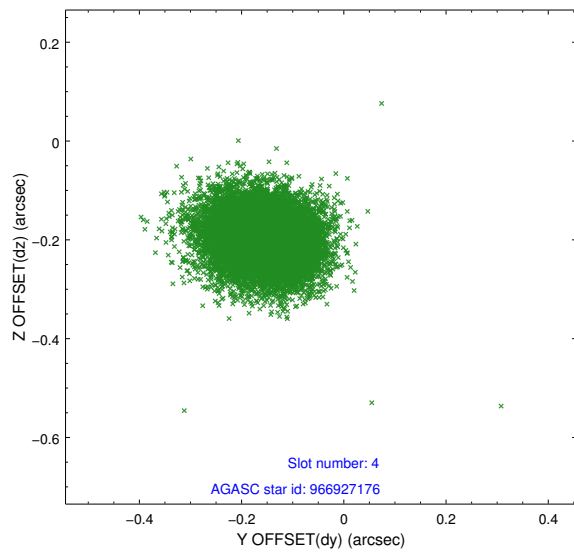
slot	status	id	mag	n_pts	med_dy	med_dz	dr1	dr2	ra	dec	mean_y	mean_z
0	FID	ACIS-S-2	7.09	5525	-0.059	-0.036	0.008	0.013	0.000000	0.000000	-766.12	-1736.29
1	FID	ACIS-S-4	7.19	5525	0.178	0.038	0.008	0.016	0.000000	0.000000	2147.29	172.17
2	FID	ACIS-S-5	7.22	5526	-0.150	0.007	0.009	0.015	0.000000	0.000000	-1818.90	165.90
3	GUIDE	966926896	9.19	11039	-0.348	-0.109	0.086	0.140	266.197771	-31.663459	2092.88	1213.01
4	GUIDE	966927176	9.02	11045	-0.157	-0.196	0.082	0.130	265.946853	-31.673679	2035.51	1980.58
5	GUIDE	967442688	8.38	11050	0.040	-0.189	0.063	0.101	266.096113	-32.373763	-471.05	1455.13
6	GUIDE	967446352	7.74	11052	0.196	0.133	0.066	0.104	267.069988	-32.671157	-1475.01	-1523.99
7	GUIDE	967447616	9.30	11036	0.271	0.362	0.098	0.158	267.260141	-32.889782	-2251.83	-2113.24

## 2.4 Star Slots

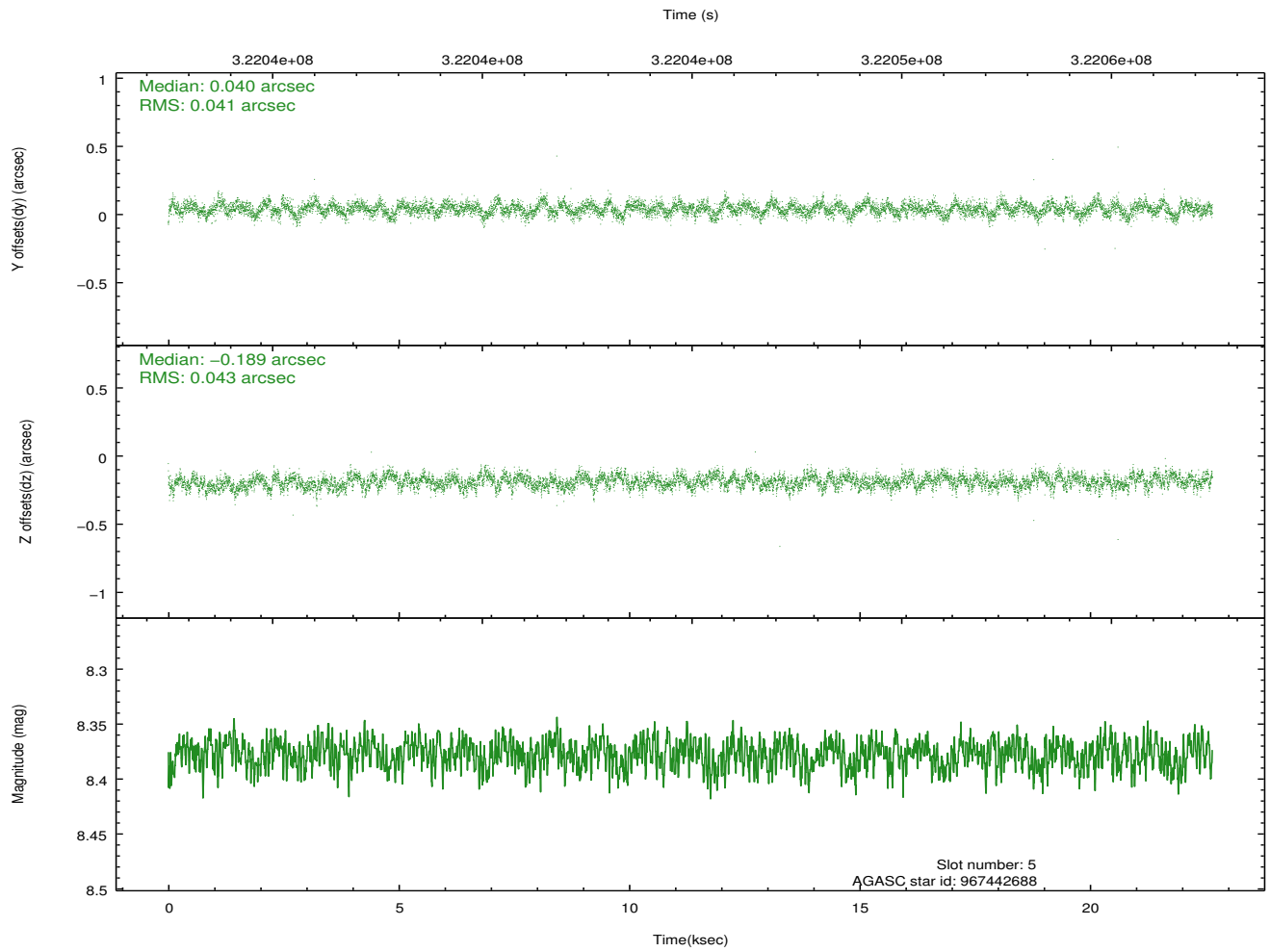
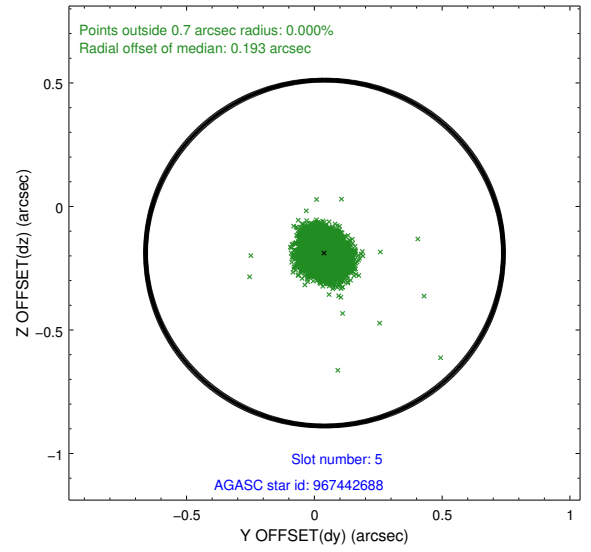
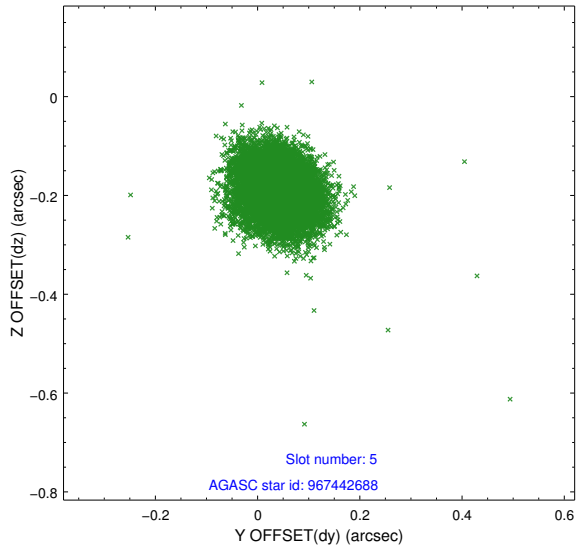
### 2.4.1 Slot 3



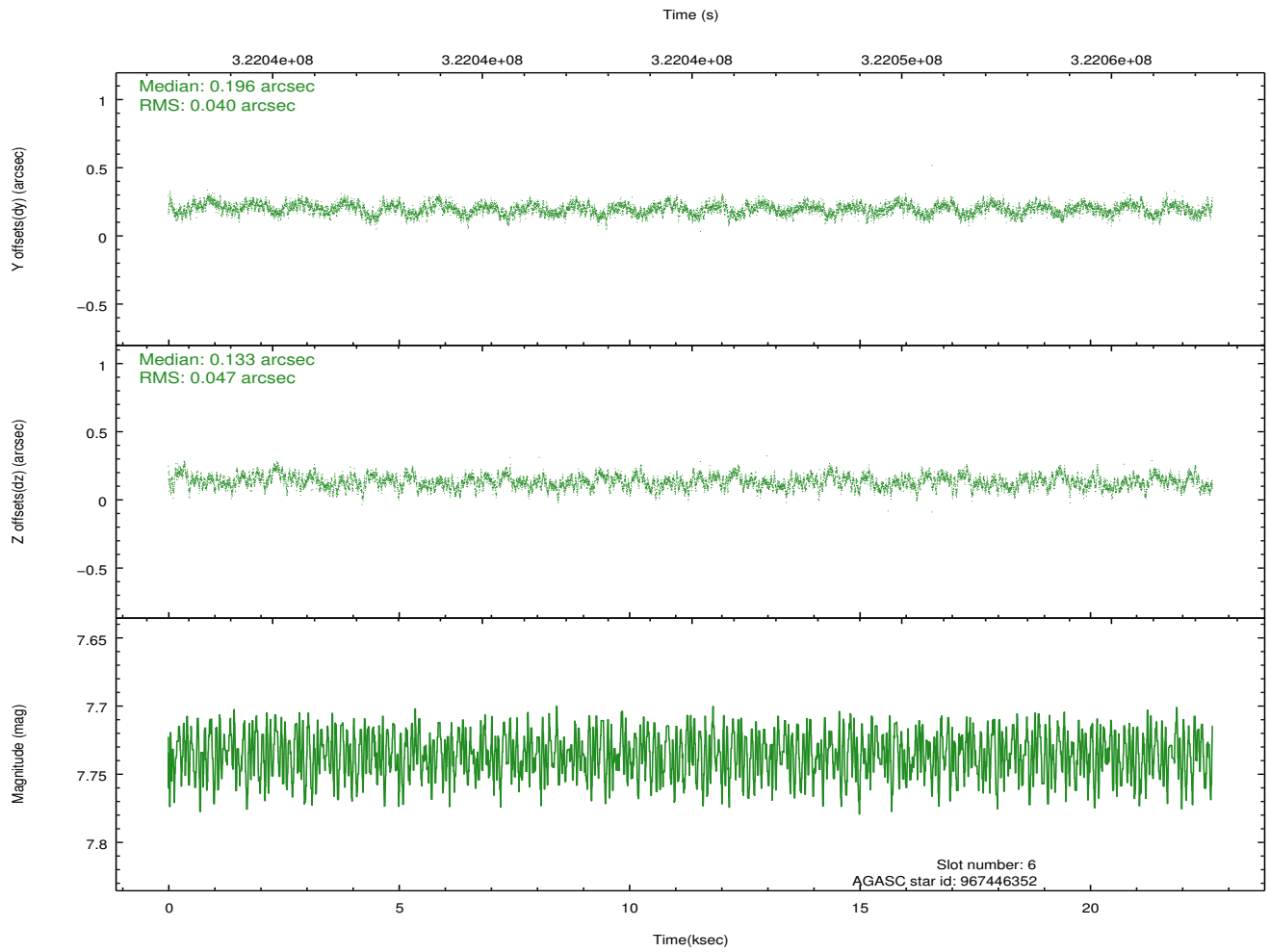
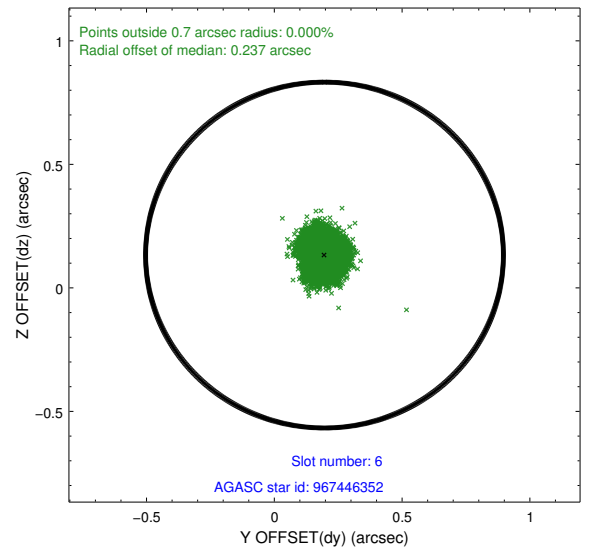
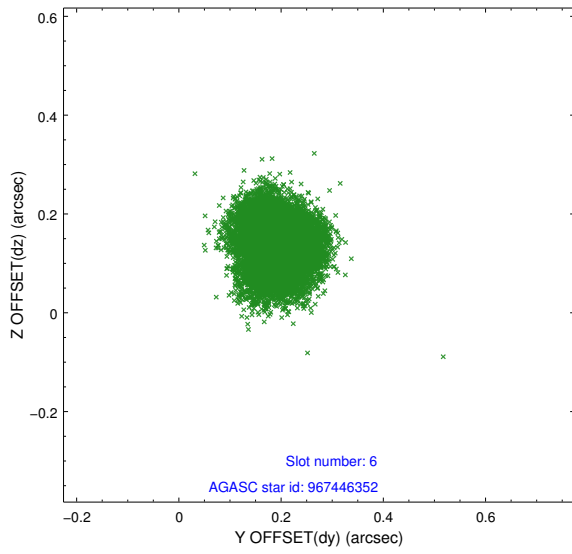
## 2.4.2 Slot 4



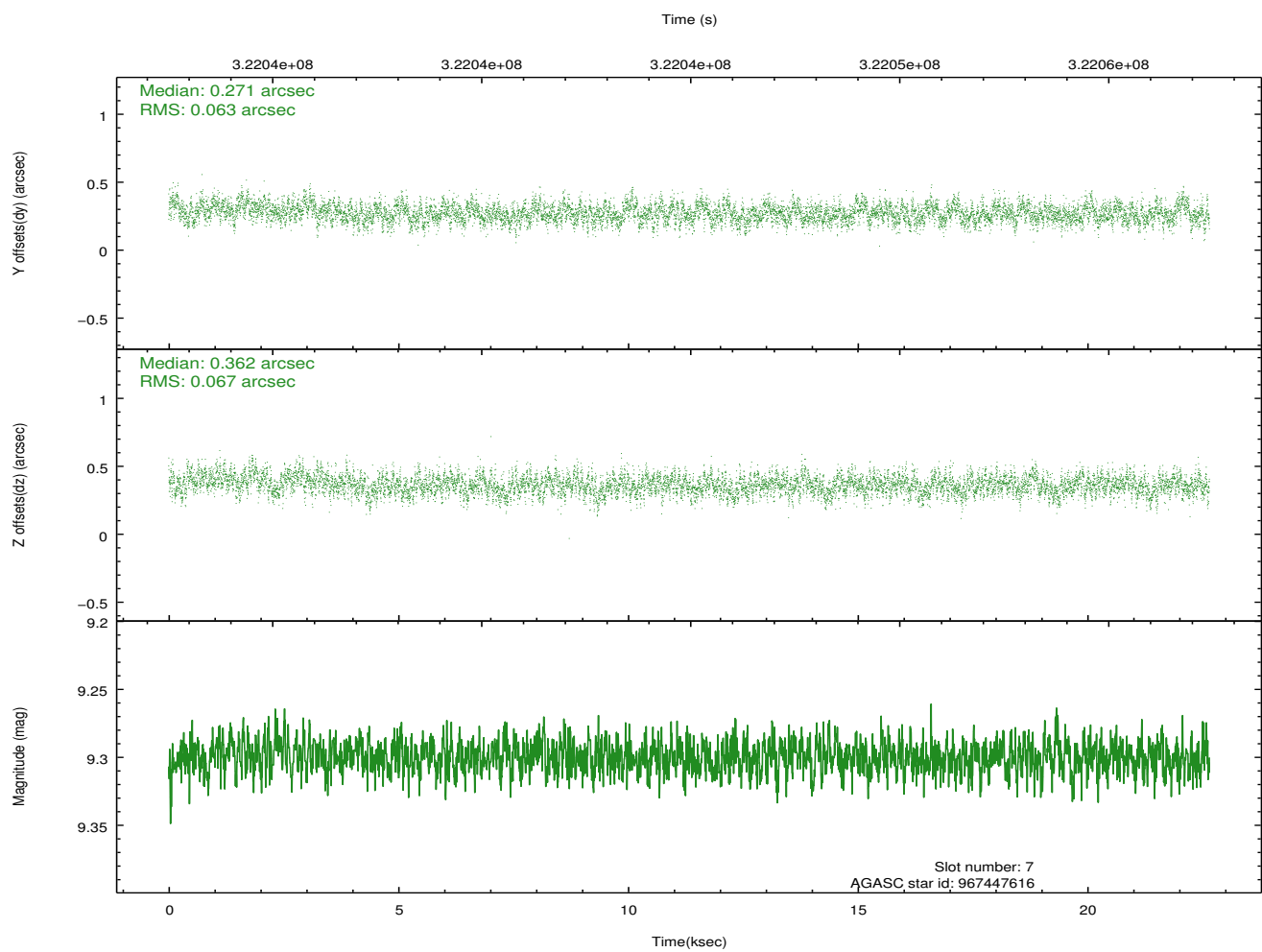
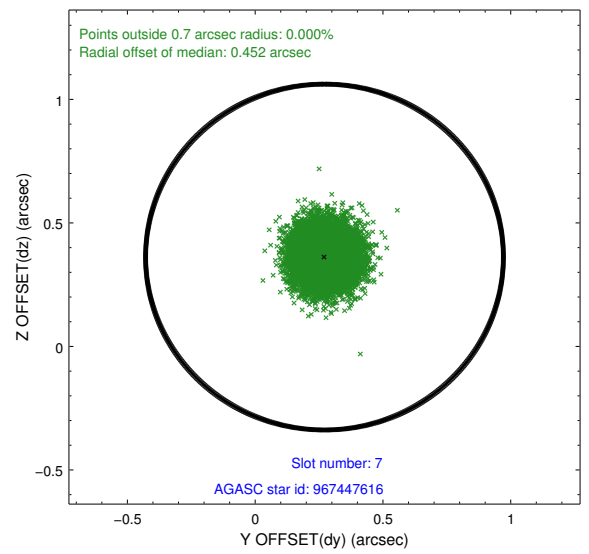
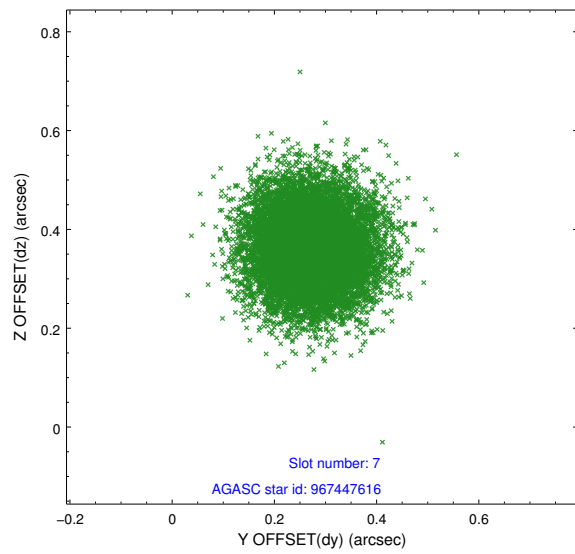
### 2.4.3 Slot 5



### 2.4.4 Slot 6

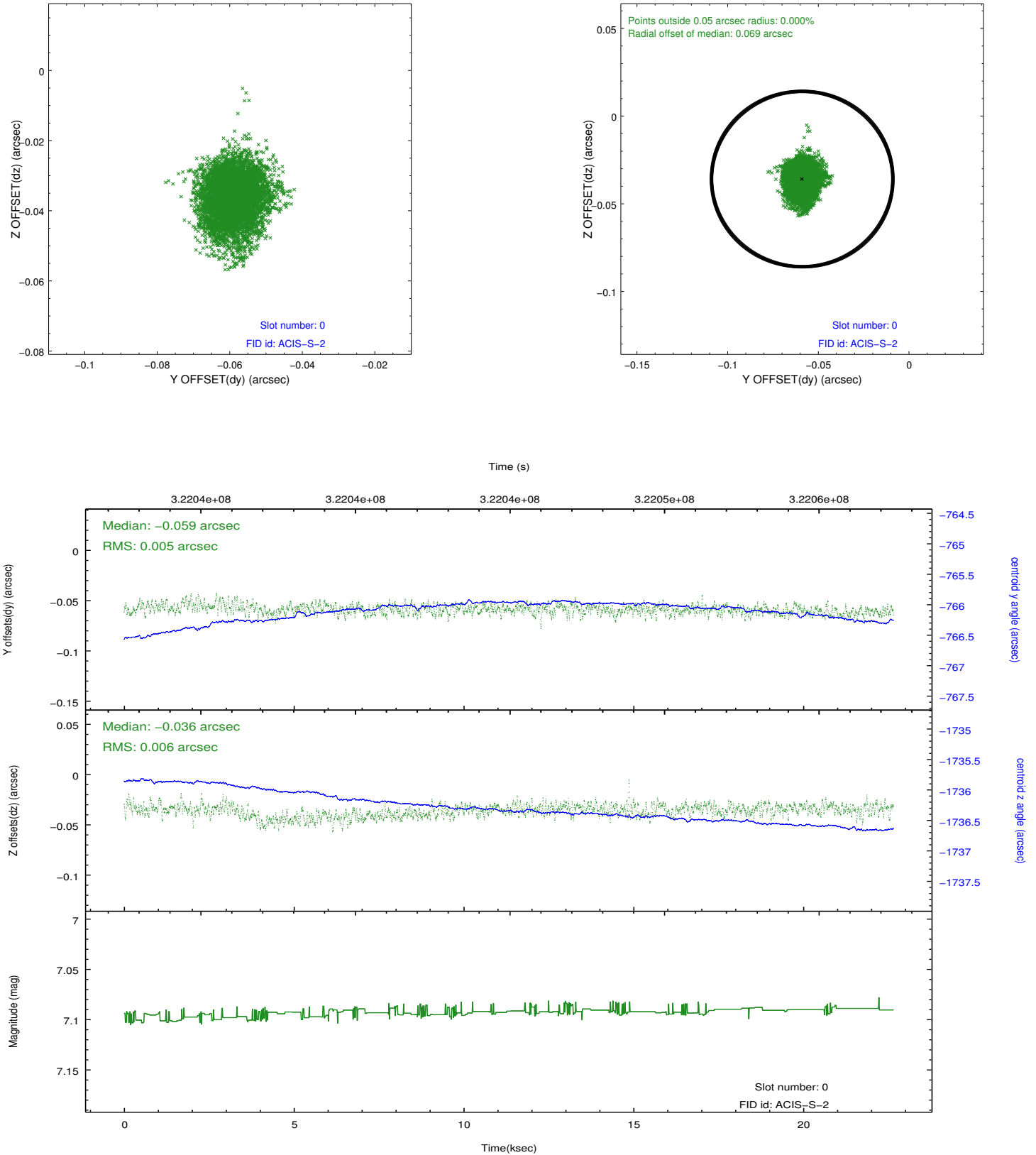


## 2.4.5 Slot 7

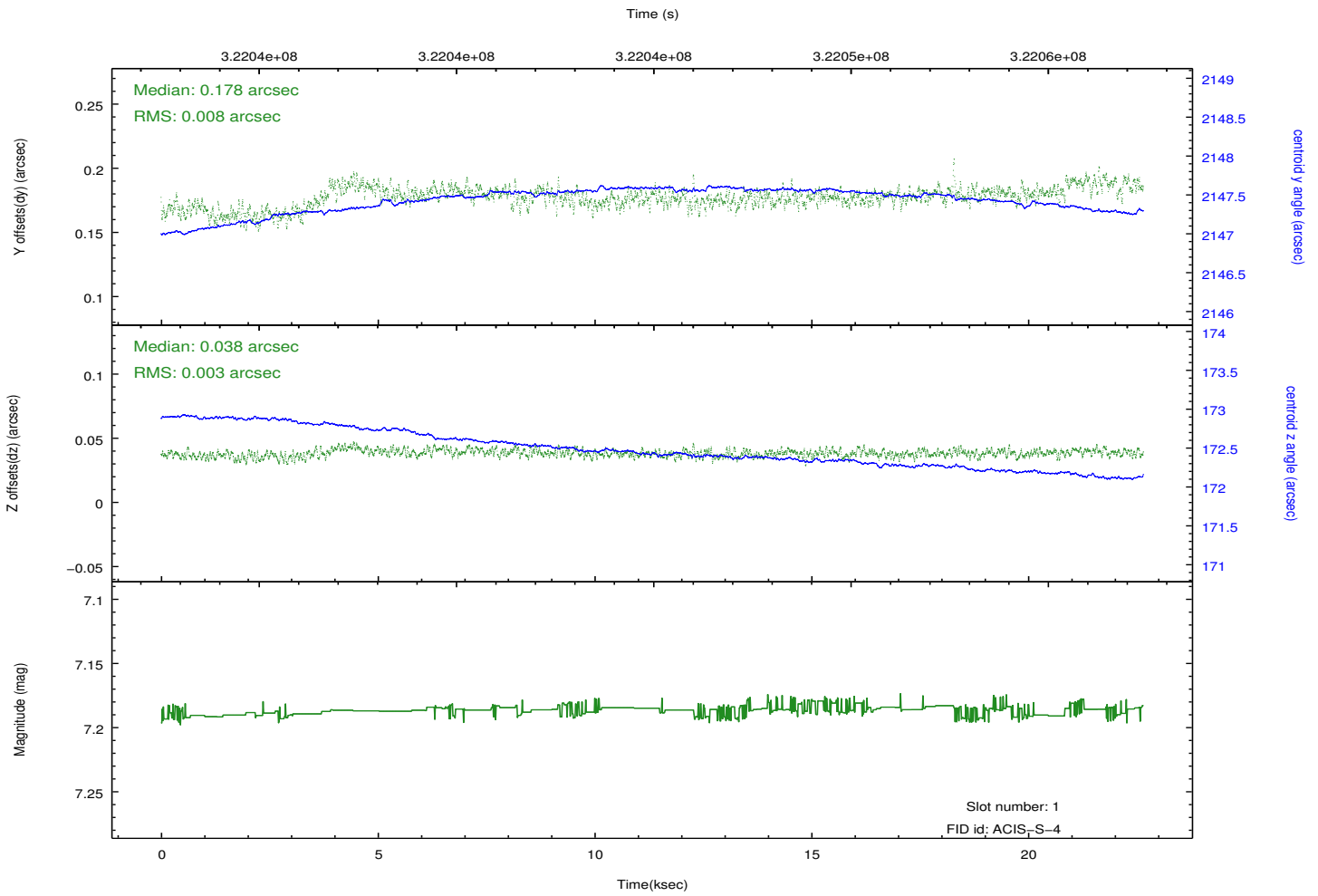
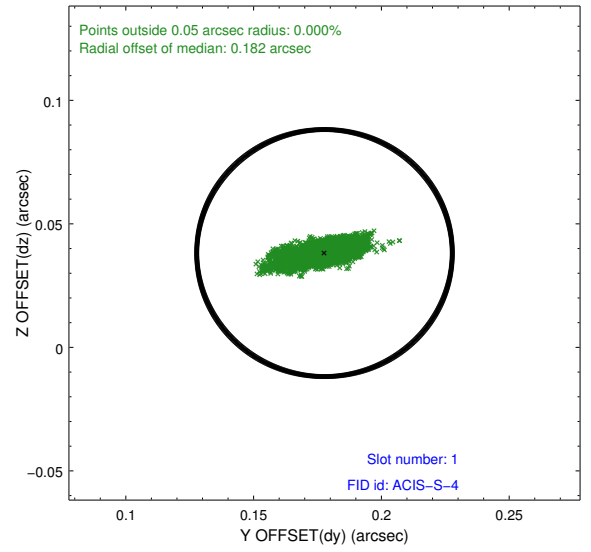
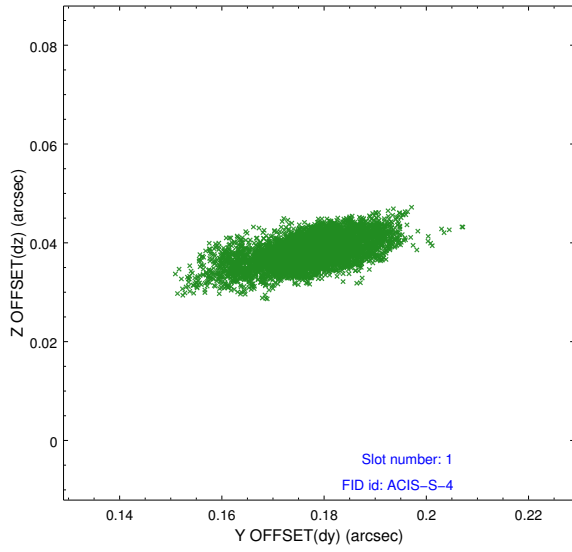


## 2.5 FID Slots

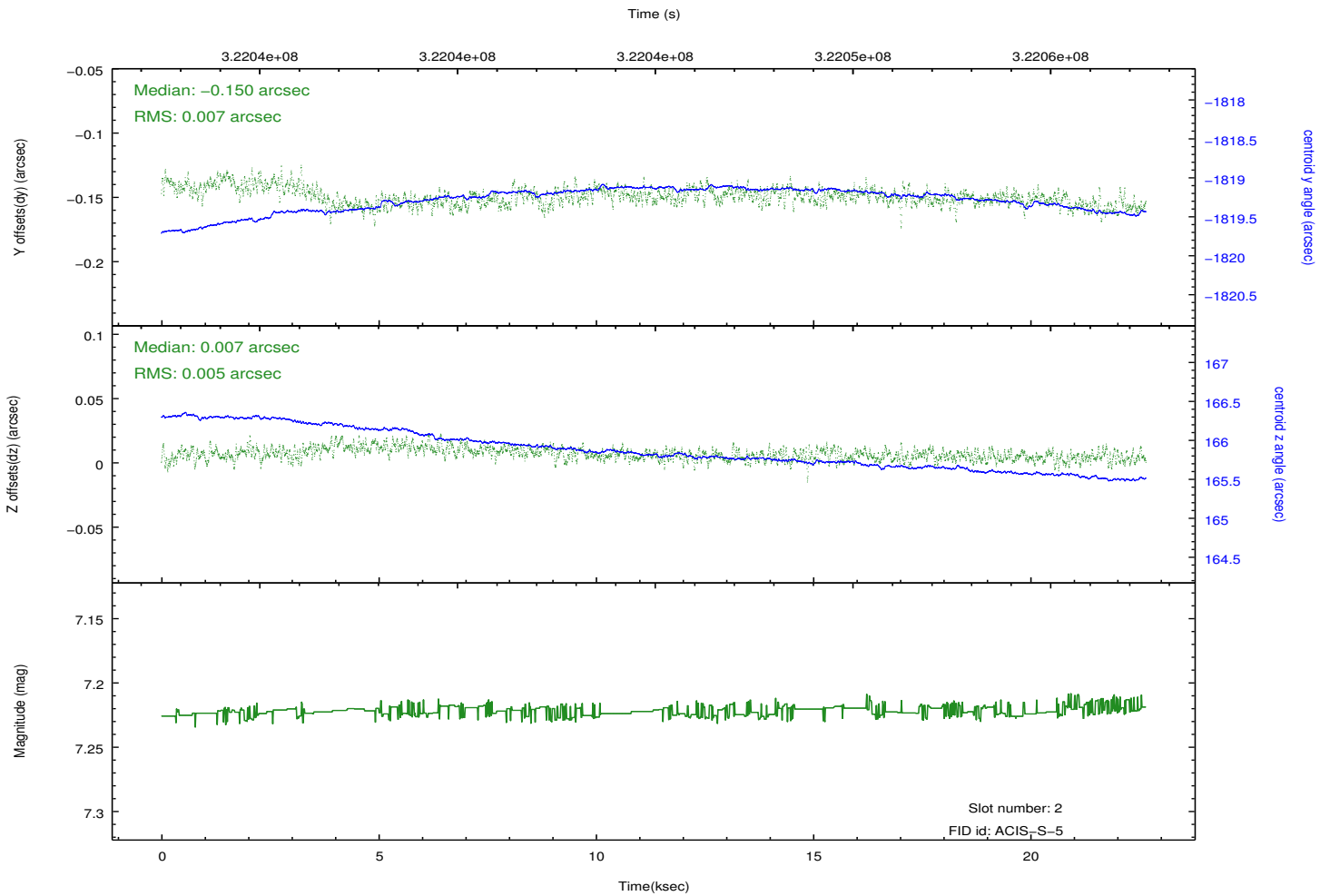
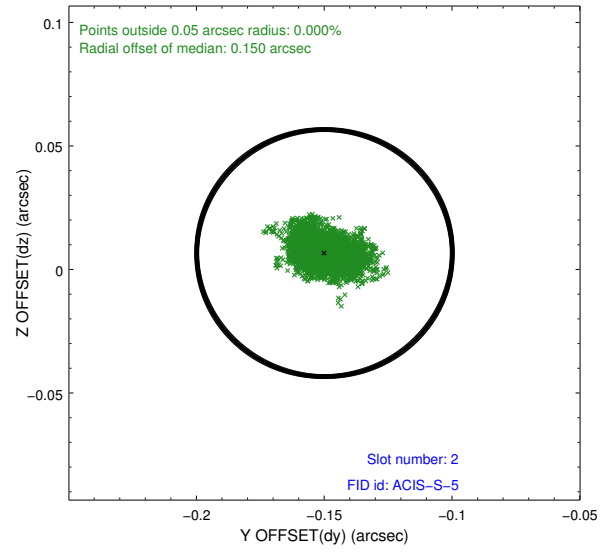
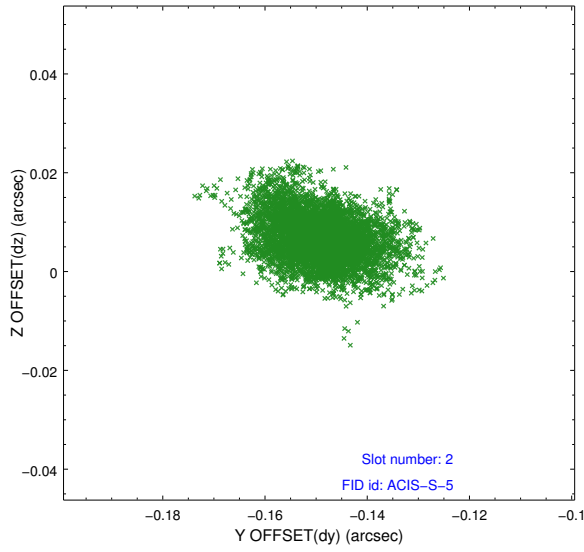
### 2.5.1 Slot 0



## 2.5.2 Slot 1



### 2.5.3 Slot 2



# A Summary

## A.1 Status

V&V Scientist	Jen Lauer
V&V Date (YYYY-MM-DD)	2012.05.14
V&V Edition	1
V&V Disposition and Status	OK
V&V Charge Time	22.6555986

## A.2 Comments

Joint Proposal: NRAO. Monitor constraint met.