

V&V Reference Report

L2 ASCDS Version : 8.4.4

Observation 9079 - L2 Version 2
Chandra X-Ray Center

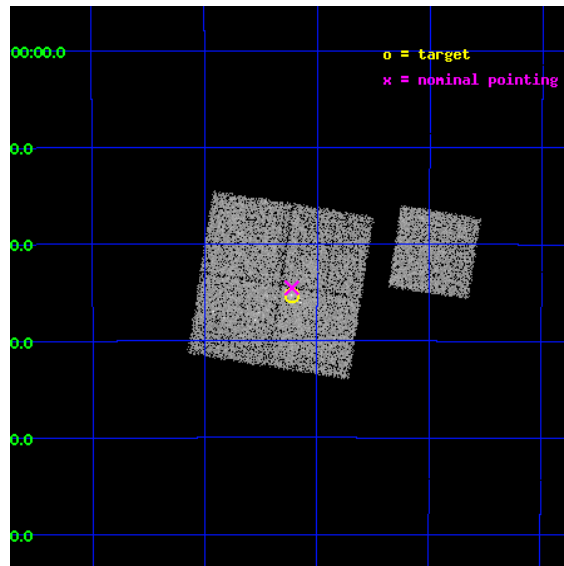
L2 Processing Date : May 30 2012

Contents

1	Front	2
2	OBI	3
2.1	OBI	3
2.1.1	Images	3
2.1.2	Bias	3
2.1.3	Parameters	4
2.1.4	Events	4
2.2	Compared Parameters	5
2.3	Aspect	6
2.4	Star Slots	9
2.4.1	Slot 3	9
2.4.2	Slot 4	10
2.4.3	Slot 5	11
2.4.4	Slot 6	12
2.4.5	Slot 7	13
2.5	FID Slots	14
2.5.1	Slot 0	14
2.5.2	Slot 1	15
2.5.3	Slot 2	16
A	Summary	17
A.1	Status	17
A.2	Comments	17

1 Front

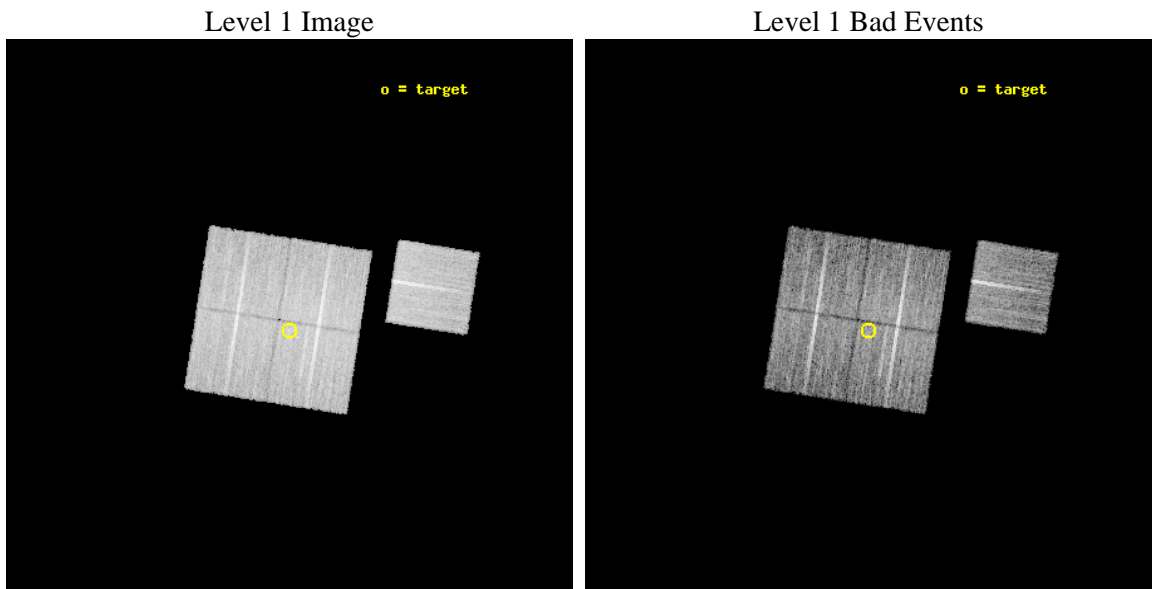
seq_num	500942	Sequence number
obs_id	9079	Observation id
title	Snap-shot survey of potential GeV and TeV pulsars	Proposal title
observer	Professor Gordon Garmire	Principal investigator
object	J1718-3825	Source name
dtcycle	0	
cycle	P	events from which exps? Prim/Second/Both
ra_targ	259.55625	Observer's specified target RA [deg]
dec_targ	-38.421667	Observer's specified target Dec [deg]
ra_nom	259.55596574498	Nominal RA [deg]
dec_nom	-38.408868492724	Nominal Dec [deg]
roll_nom	98.924384750464	Nominal Roll [deg]
revision	2	Processing version of data
ontime	10040.859116912	Sum of GTIs [s]
livetime	9909.6679005765	Livetime [s]
ontime0	10037.718126655	Sum of GTIs [s]
ontime1	10044.000077248	Sum of GTIs [s]
ontime2	10044.000077248	Sum of GTIs [s]
ontime3	10040.859116912	Sum of GTIs [s]
ontime6	10044.000077248	Sum of GTIs [s]
l2events	41525	Number of level 2 events



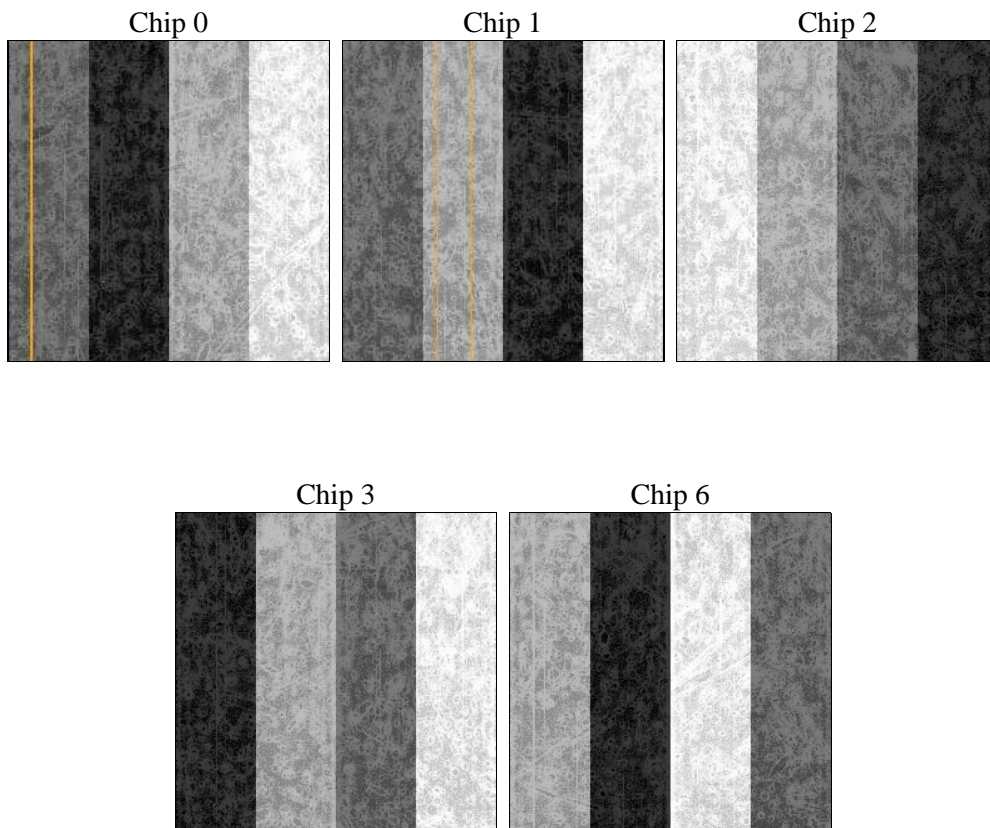
2 OBI

2.1 OBI

2.1.1 Images



2.1.2 Bias



2.1.3 Parameters

obi_num	0	Obi number	sched_exp_time	10000.000000	[s] Scheduled observation exposure time
ascdsver	8.4.4	Processing system revision	ontime	10040.859116912	Sum of GTIs [s]
caldbver	4.4.9	 	ontime0	10037.718126655	Sum of GTIs [s]
date	2012-05-30T06:20:45	Date and time of file creation	ontime1	10044.000077248	Sum of GTIs [s]
revision	2	Processing version of data	ontime2	10044.000077248	Sum of GTIs [s]
			ontime3	10040.859116912	Sum of GTIs [s]
			ontime6	10044.000077248	Sum of GTIs [s]
			l1events	395410	Number of level 1 events

2.1.4 Events

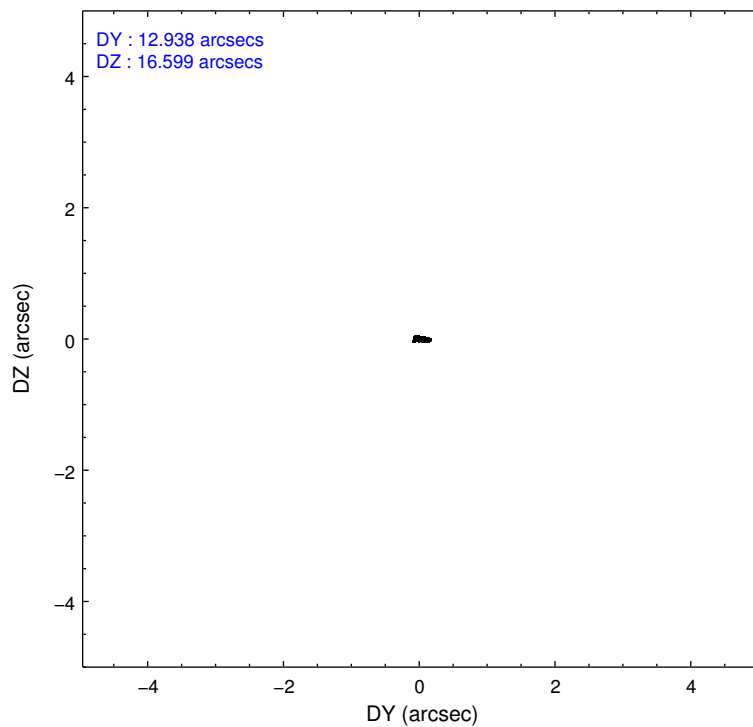
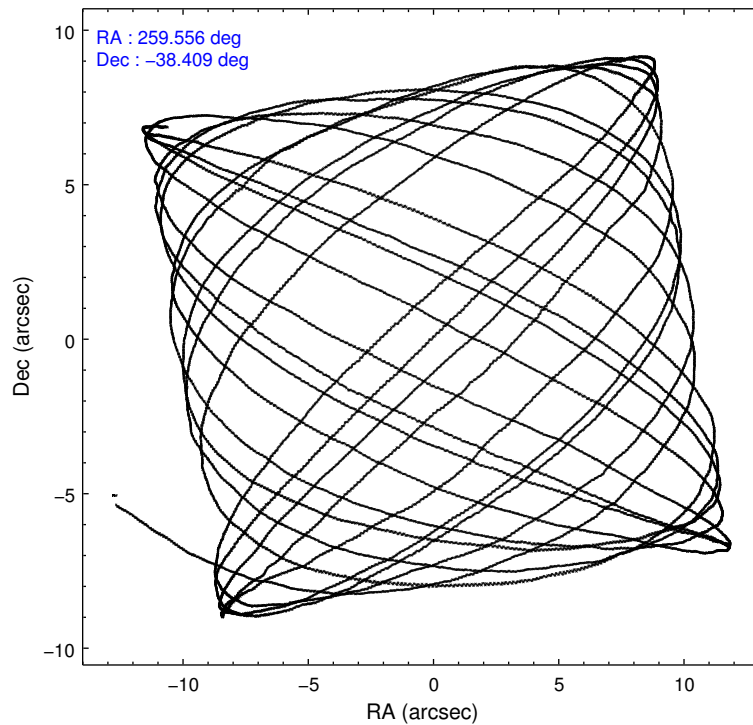
	ccd 0	ccd 1	ccd 2	ccd 3	ccd 6
level 1 events	74697	74544	84133	82162	79874
rejected events	64455	64325	74576	72207	70824
rejected %	86%	86%	88%	87%	88%

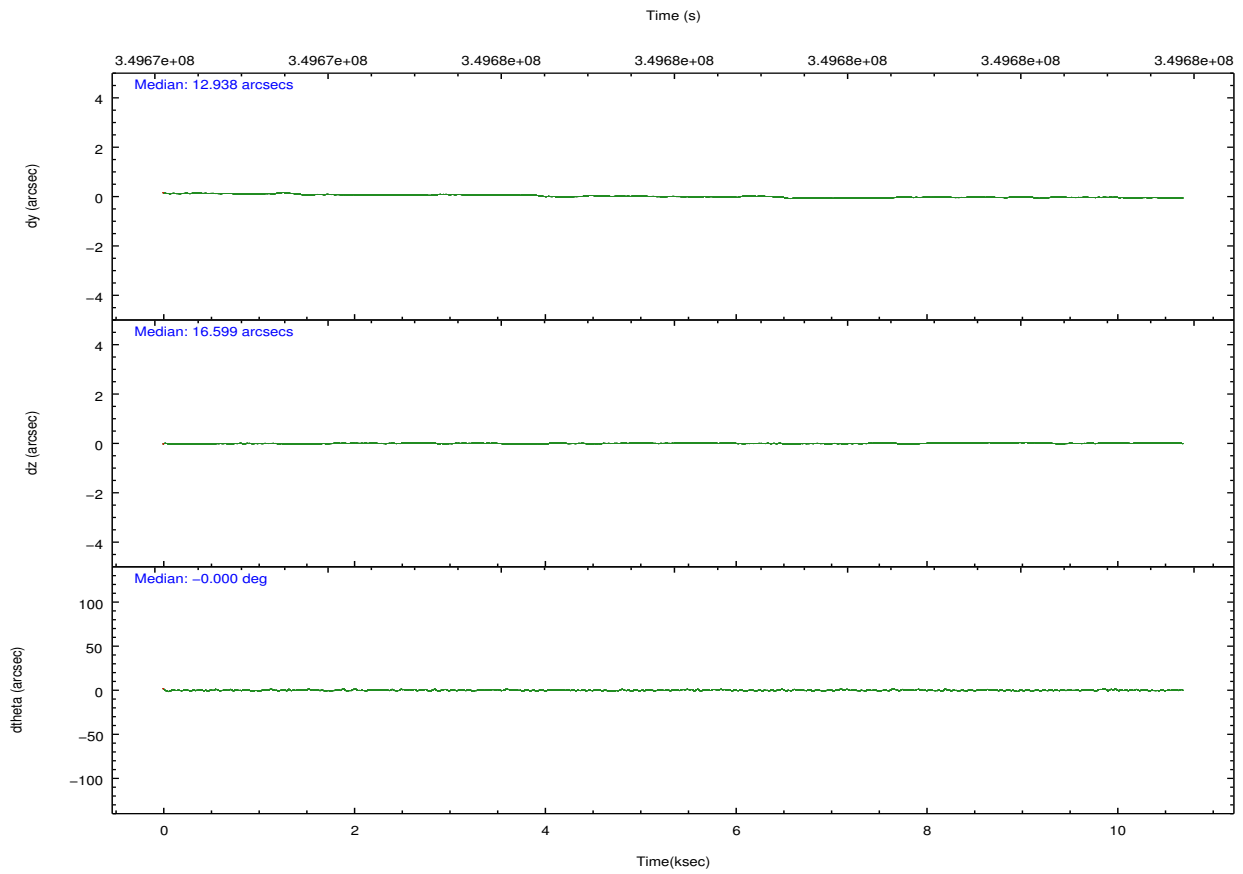
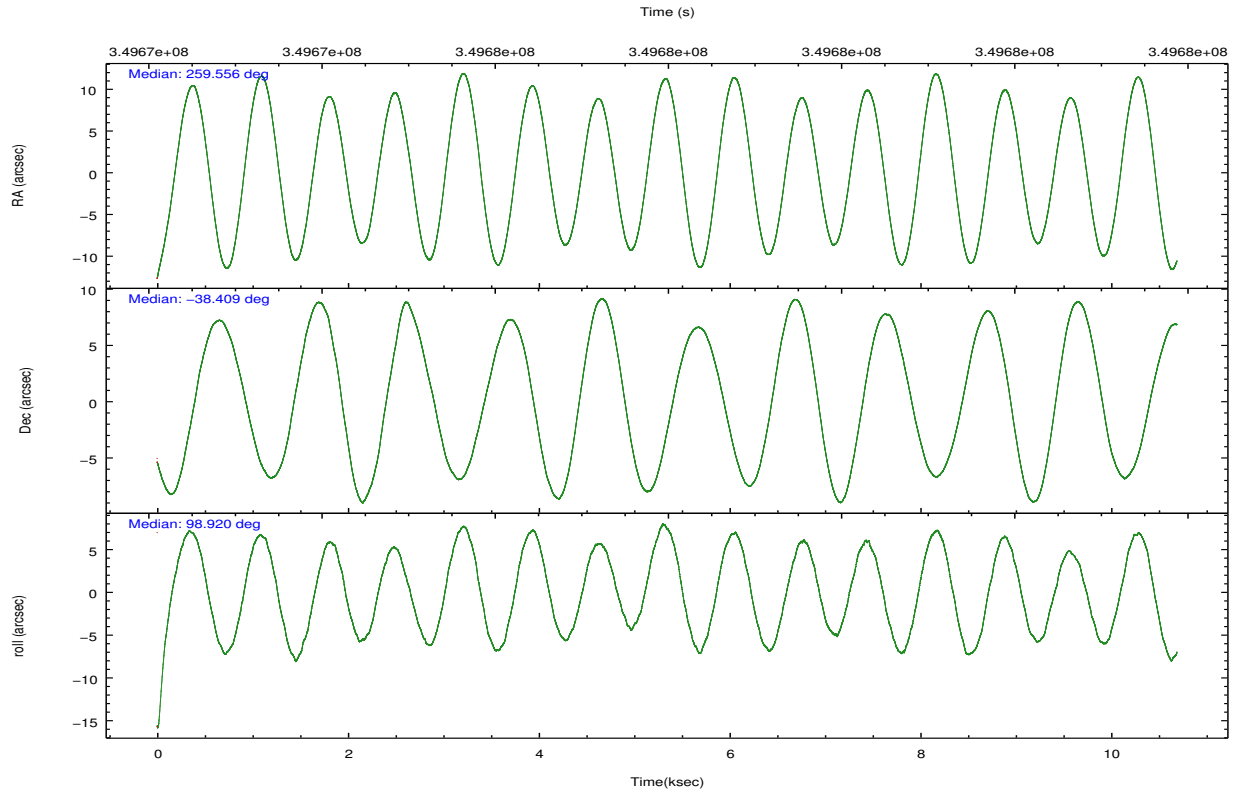
	ccd 0	ccd 1	ccd 2	ccd 3	ccd 6
grade 0 events	4666	4433	4310	4747	3661
	6%	5%	5%	5%	4%
grade 1 events	69	54	65	67	46
	0%	0%	0%	0%	0%
grade 2 events	2133	2081	1988	1947	1918
	2%	2%	2%	2%	2%
grade 3 events	958	1033	884	909	909
	1%	1%	1%	1%	1%
grade 4 events	934	985	887	828	929
	1%	1%	1%	1%	1%
grade 5 events	2465	2700	2362	2804	2745
	3%	3%	2%	3%	3%
grade 6 events	1554	1688	1490	1530	1634
	2%	2%	1%	1%	2%
grade 7 events	61918	61570	72147	69330	68032
	82%	82%	85%	84%	85%

2.2 Compared Parameters

Parameter	Planned	Actual	Parameter	Planned	Actual
Instrument	ACIS	ACIS	Obspar format version number	7	7
Detector	ACIS-01236	ACIS-01236	Obspar file type	PREDICTED	ACTUAL
Grating	NONE	NONE	Obspar update status	NONE	UPDATED
Data mode	VFAINT	VFAINT	CCD I0 on	Y	Y
Observation mode	POINTING	POINTING	CCD I1 on	Y	Y
[deg] Pointing RA	259.578153	259.5559657449819	CCD I2 on	Y	Y
[deg] Pointing Dec	-38.430163	-38.40886849272437	CCD I3 on	Y	Y
[deg] Pointing Roll	98.729496	98.92438475046447	CCD S0 on	N	N
[mm] SIM focus pos	-0.782348	-0.7809083437167272	CCD S1 on	N	N
[mm] SIM defocus	0	0.001439871863259334	CCD S2 on	O2	Y
[mm] SIM translation stage pos	-232.122463	-232.1190743247176	CCD S3 on	O1	N
[mm] SIM translation stage offset	-1.47	-1.473378678212043	CCD S4 on	N	N
[s] Observation start time (MET)	349673323.184000	349672143.43472	CCD S5 on	N	N
Observation start date	2009-01-30T03:27:37	2009-01-30T03:09:03	Number of optional ACIS chips dropped	1	1
[s] Observation end time (MET)	349683323.184000	349683492.23528	On-chip summing requested	N	N
Observation end date	2009-01-30T06:14:17	2009-01-30T06:18:12	Subarray requested	NONE	NONE
Read mode	TIMED	TIMED	Alternating exposures requested	N	N
			[s] Primary exposure time	0.000000	3.1

2.3 Aspect



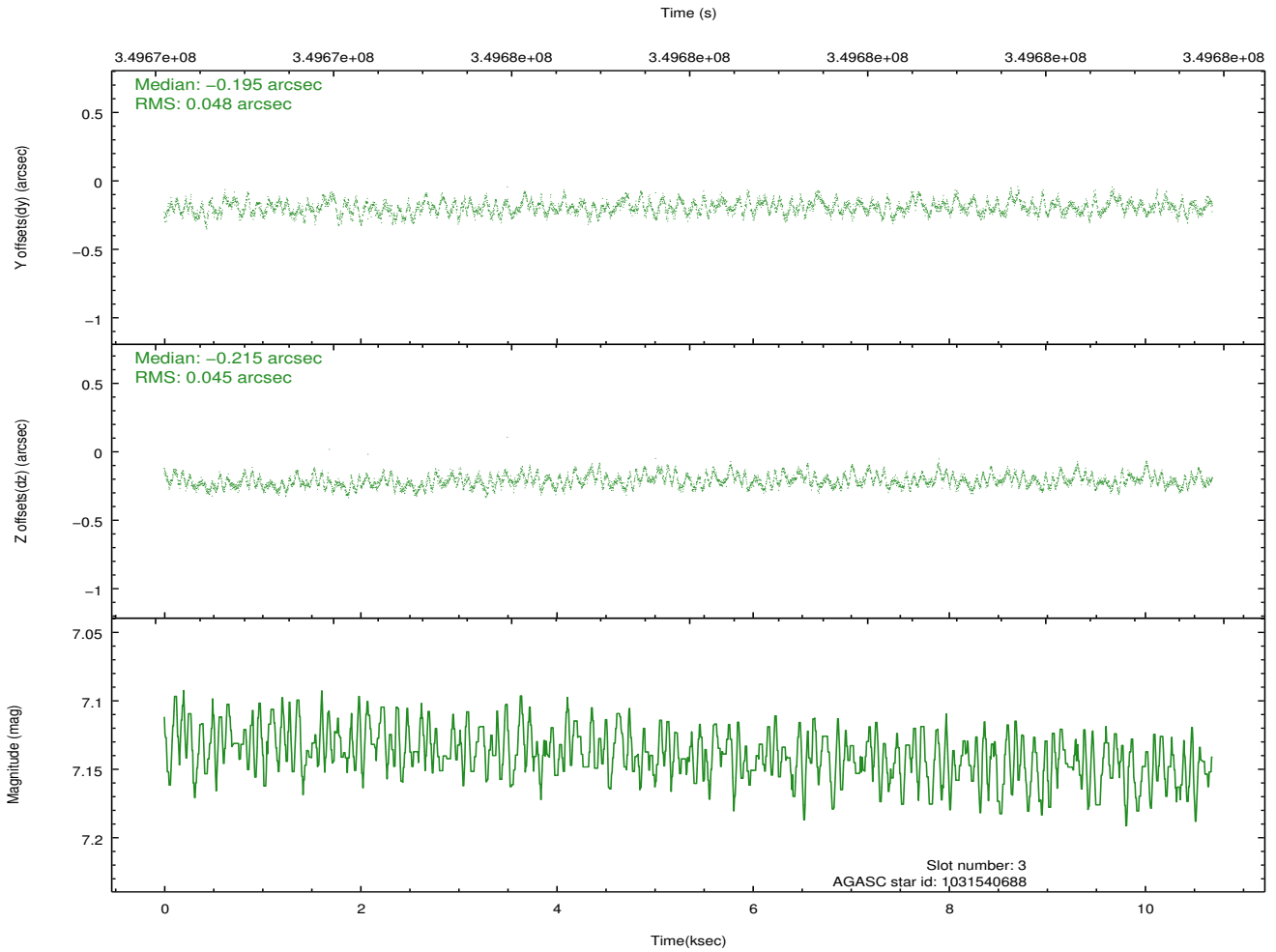
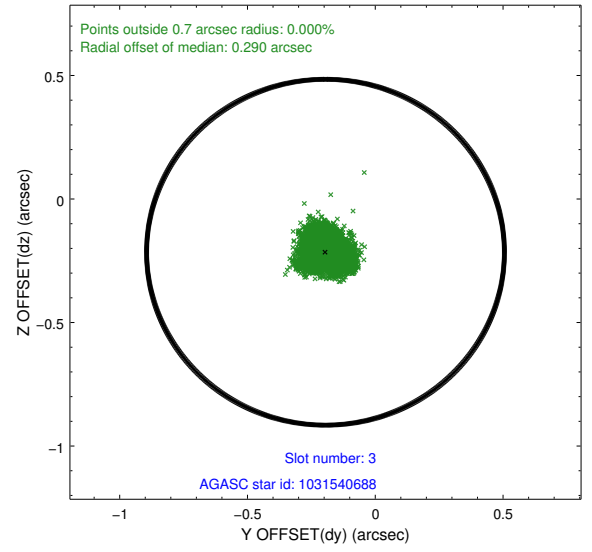
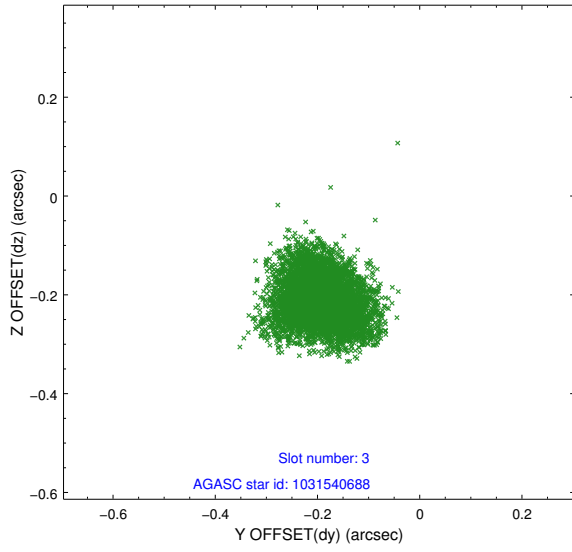


Slot Statistics

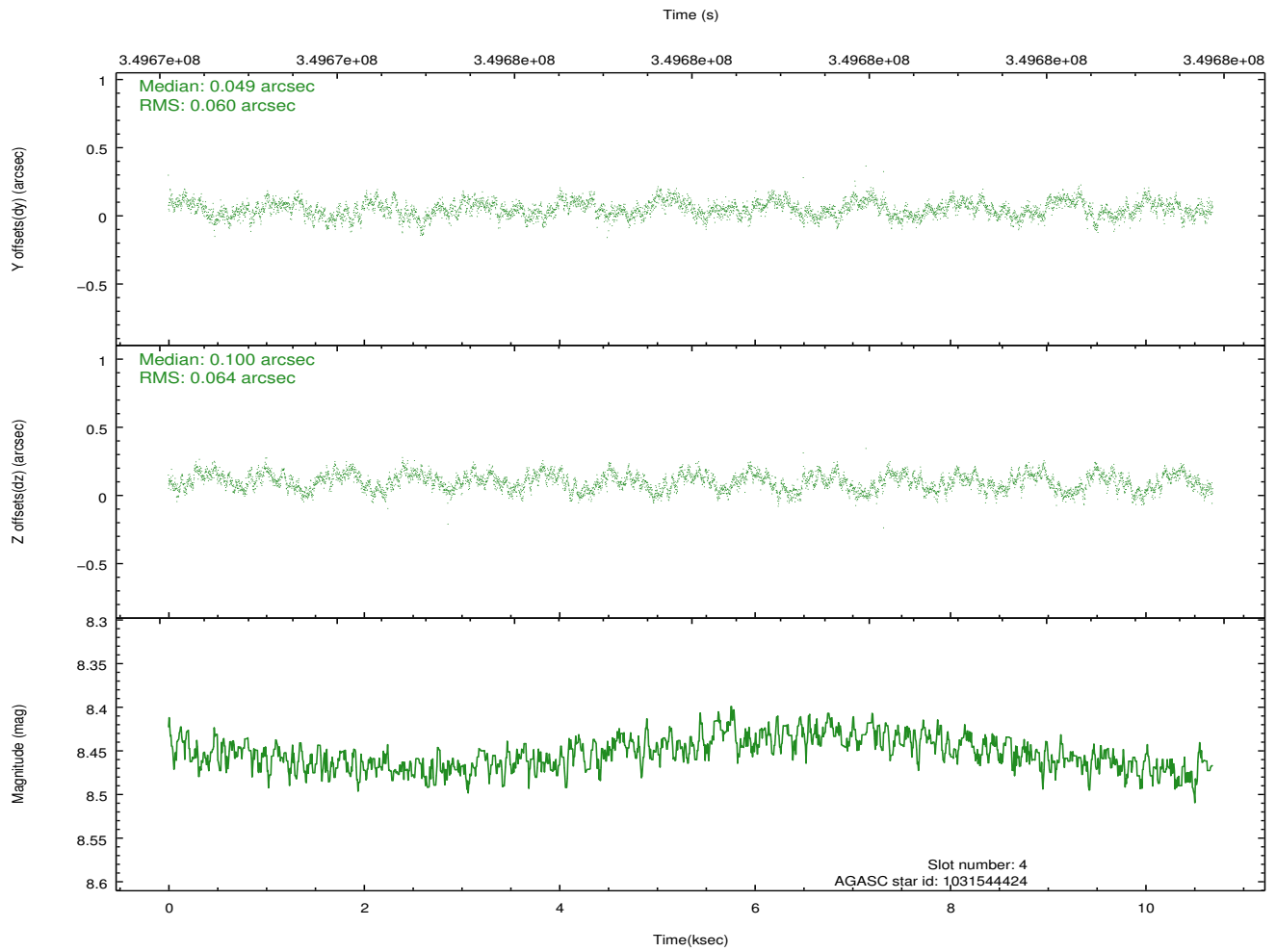
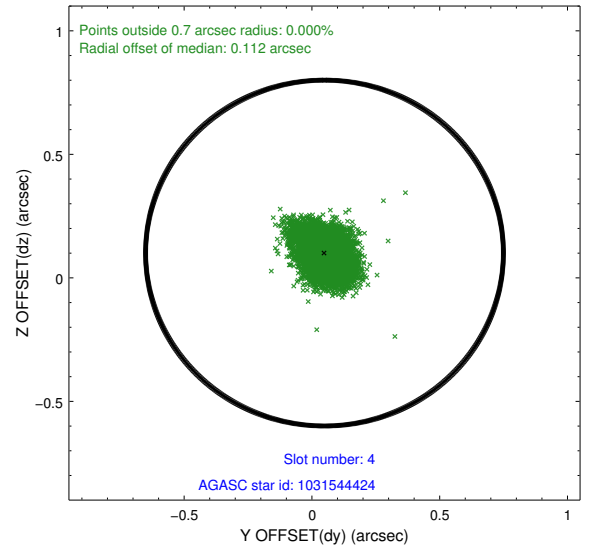
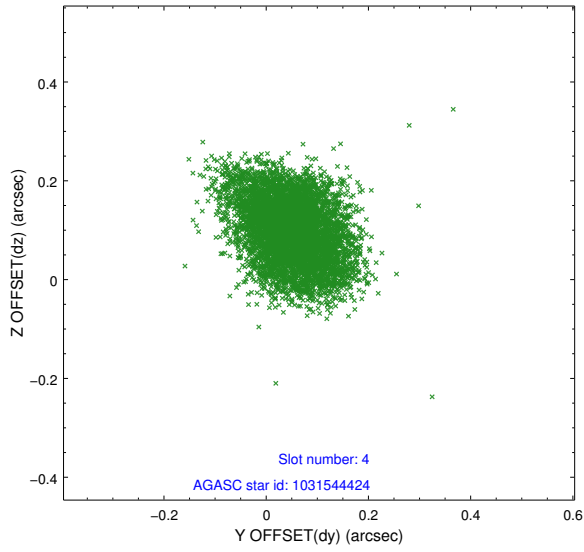
slot	status	id	mag	n_pts	med_dy	med_dz	dr1	dr2	ra	dec	mean_y	mean_z
0	FID	ACIS-I-2	6.94	2606	0.021	-0.100	0.012	0.025	0.000000	0.000000	-767.73	-876.64
1	FID	ACIS-I-5	6.99	2608	-0.191	0.104	0.010	0.016	0.000000	0.000000	-1822.12	1026.98
2	FID	ACIS-I-6	7.00	2607	0.076	0.064	0.009	0.016	0.000000	0.000000	391.67	1671.94
3	GUIDE	1031540688	7.14	5214	-0.195	-0.215	0.071	0.113	258.843021	-38.212972	1080.09	1937.70
4	GUIDE	1031544424	8.45	5212	0.049	0.100	0.093	0.147	259.780458	-38.098548	1092.74	-747.01
5	GUIDE	1031545688	8.58	5205	0.193	-0.016	0.069	0.117	259.343302	-39.044115	-2085.32	984.30
6	GUIDE	1033252768	7.97	5212	0.132	0.288	0.062	0.102	260.302495	-38.782653	-1570.71	-1815.07
7	GUIDE	1031545280	8.39	5212	-0.179	-0.156	0.063	0.102	258.885409	-38.086117	1514.40	1752.95

2.4 Star Slots

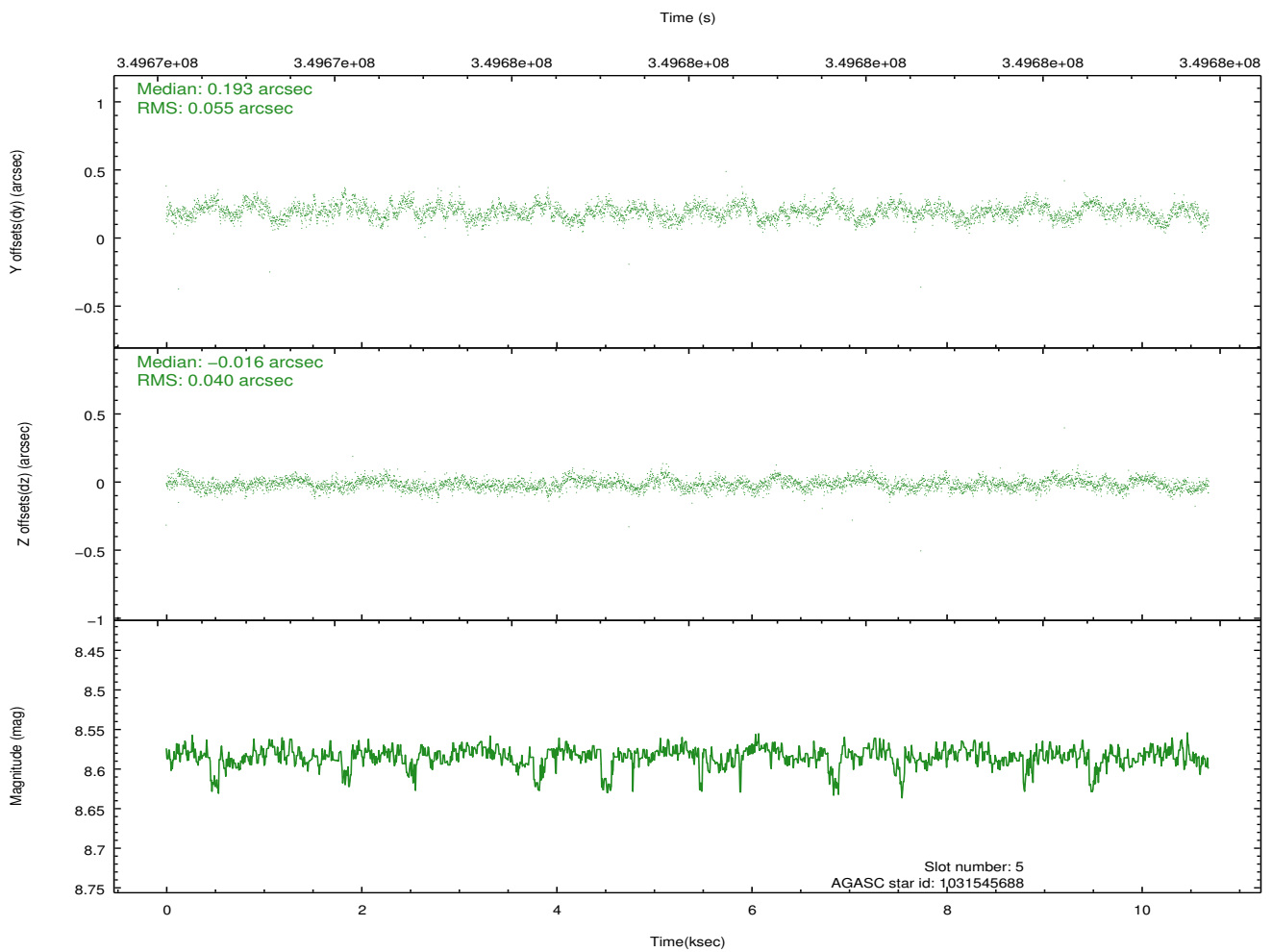
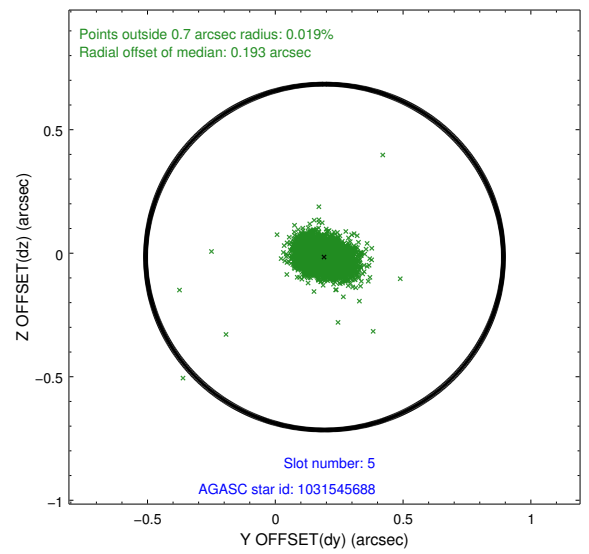
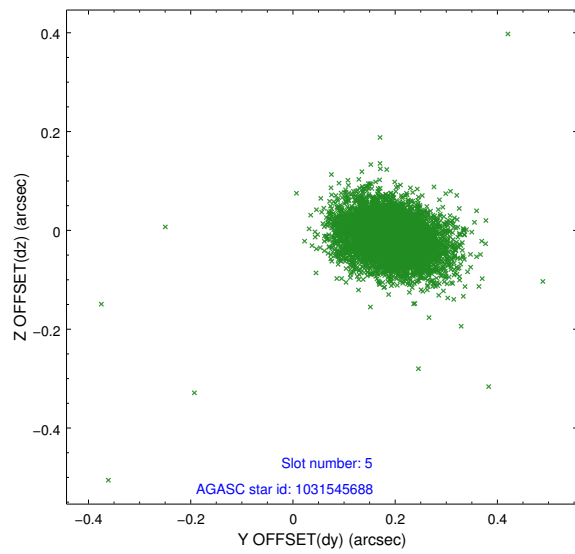
2.4.1 Slot 3



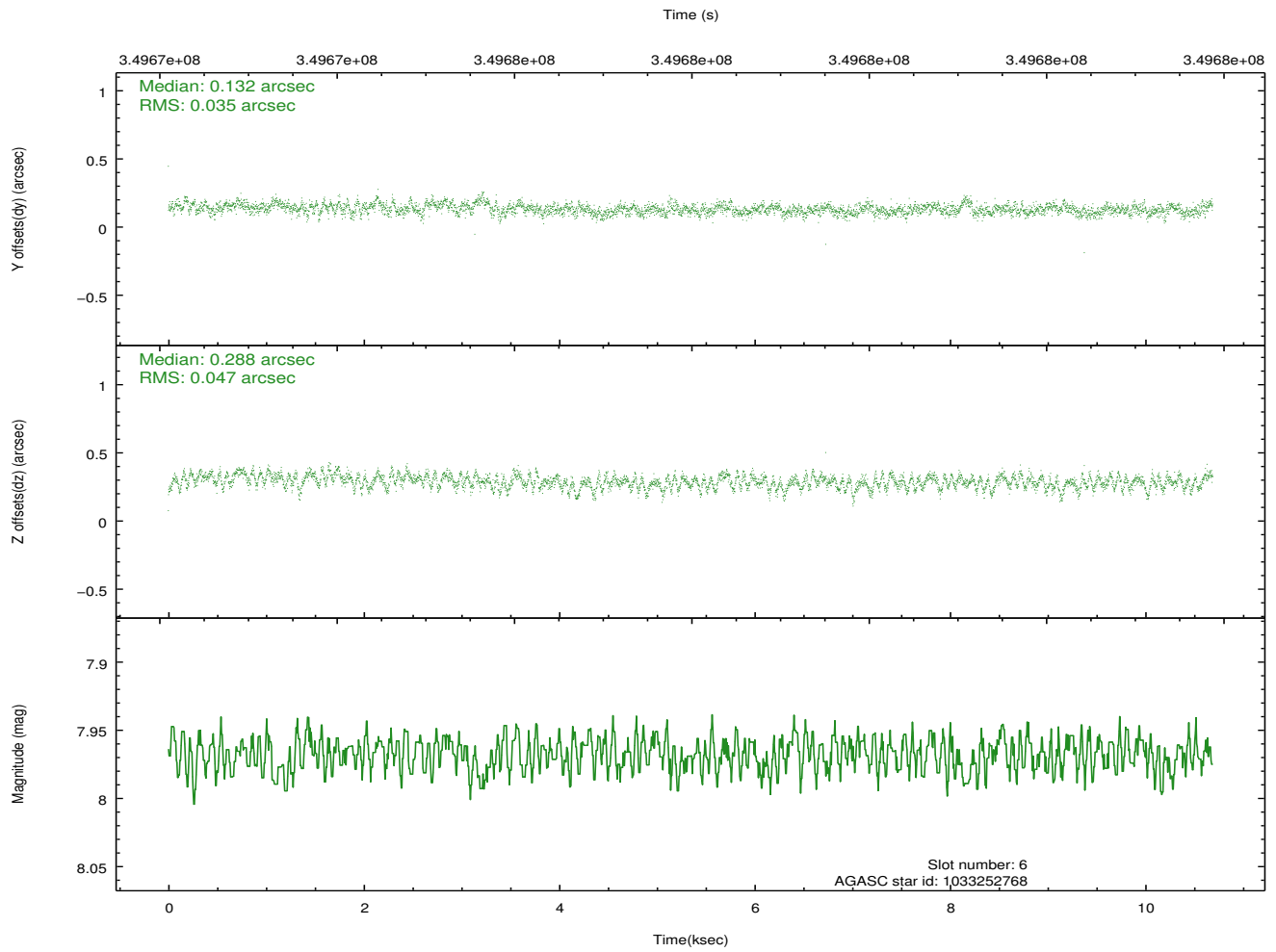
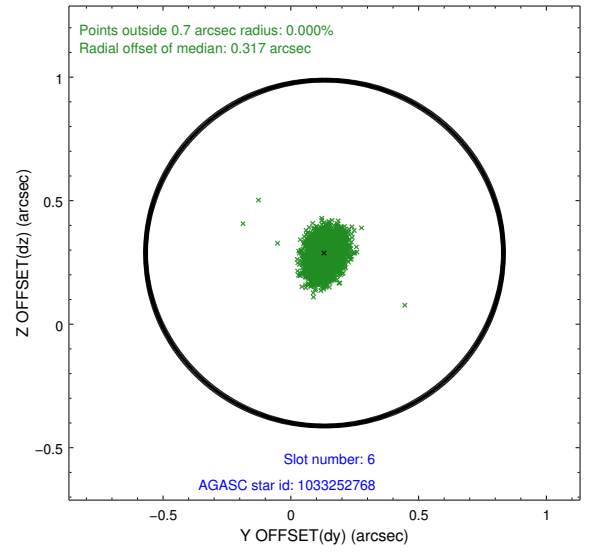
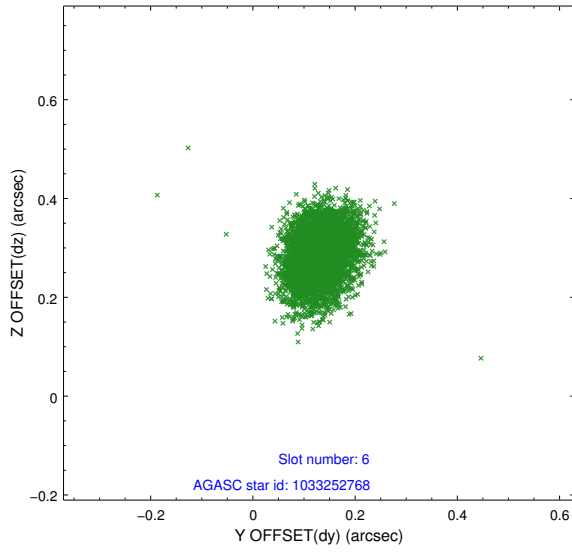
2.4.2 Slot 4



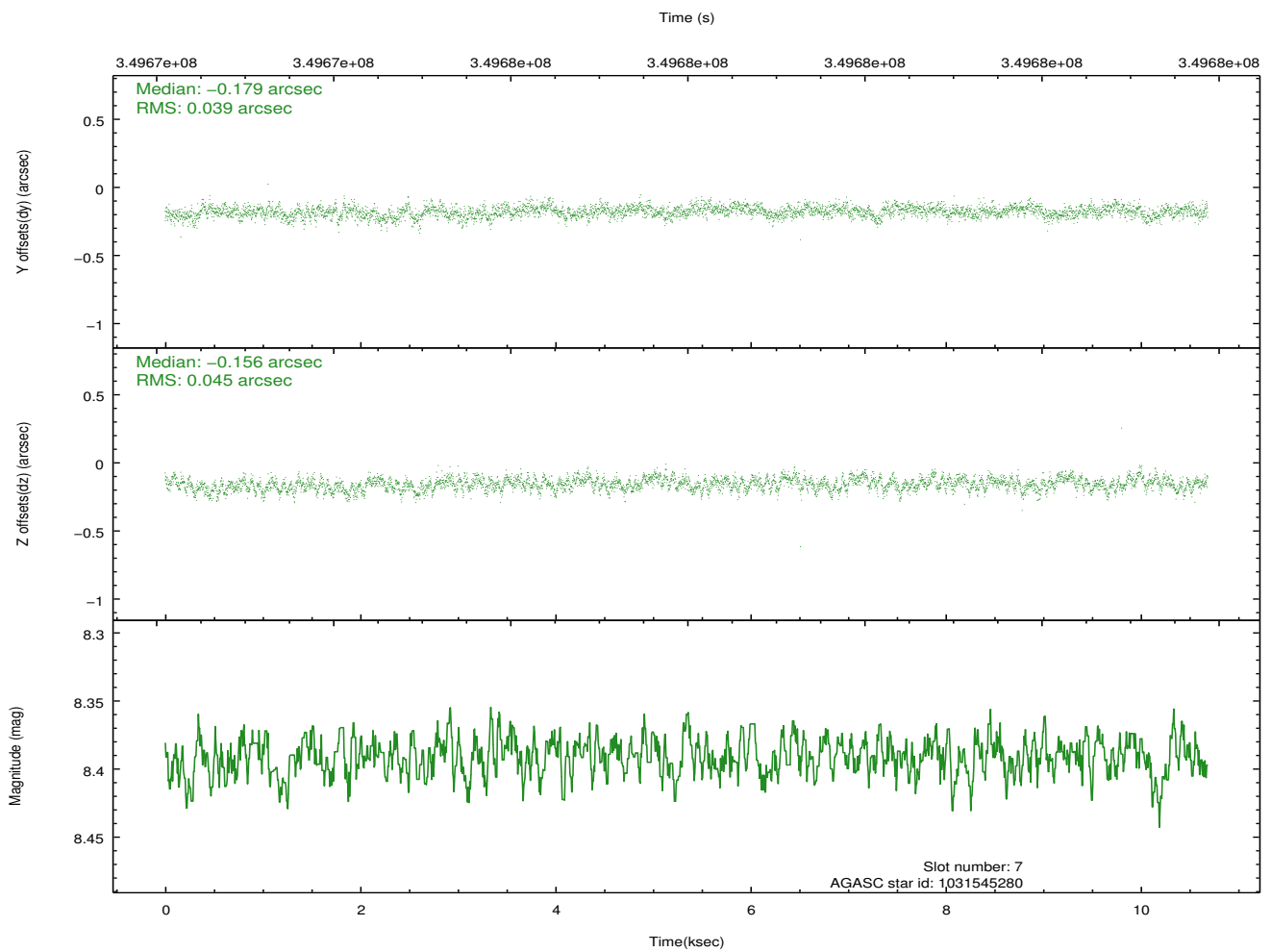
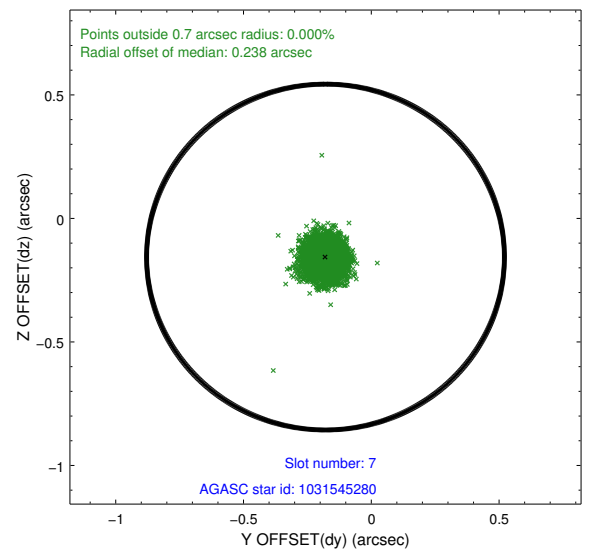
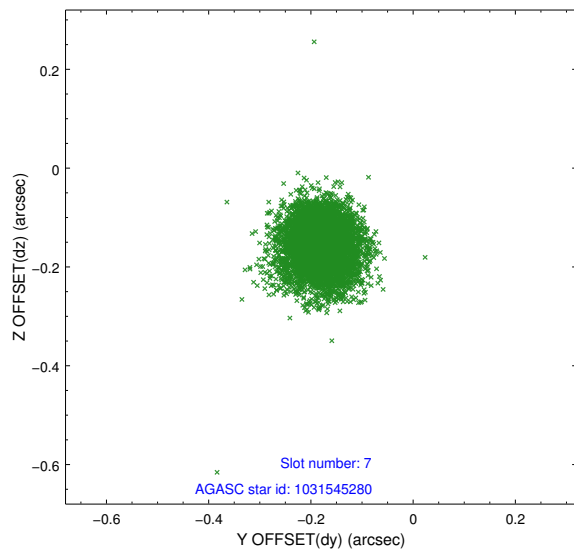
2.4.3 Slot 5



2.4.4 Slot 6

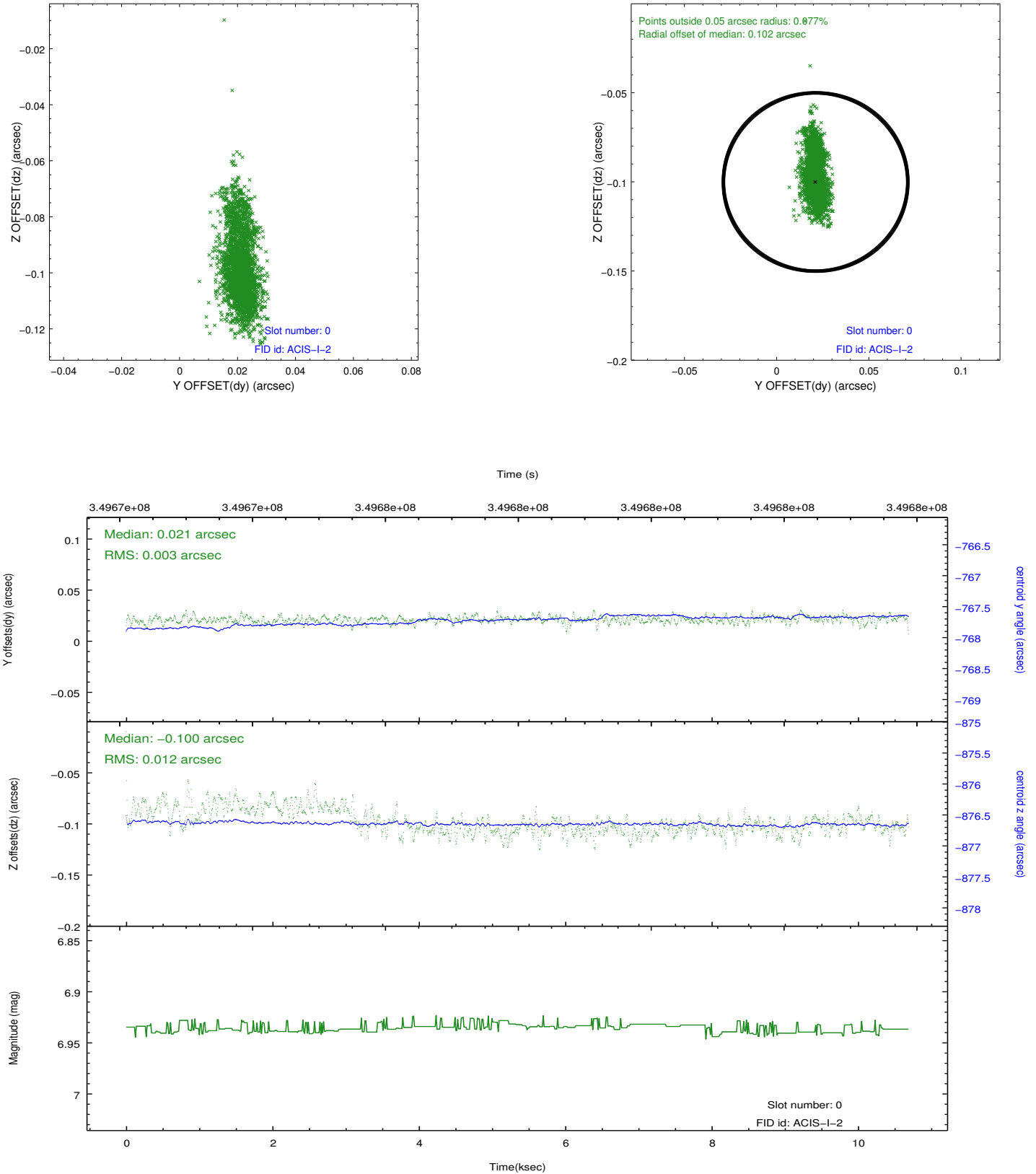


2.4.5 Slot 7

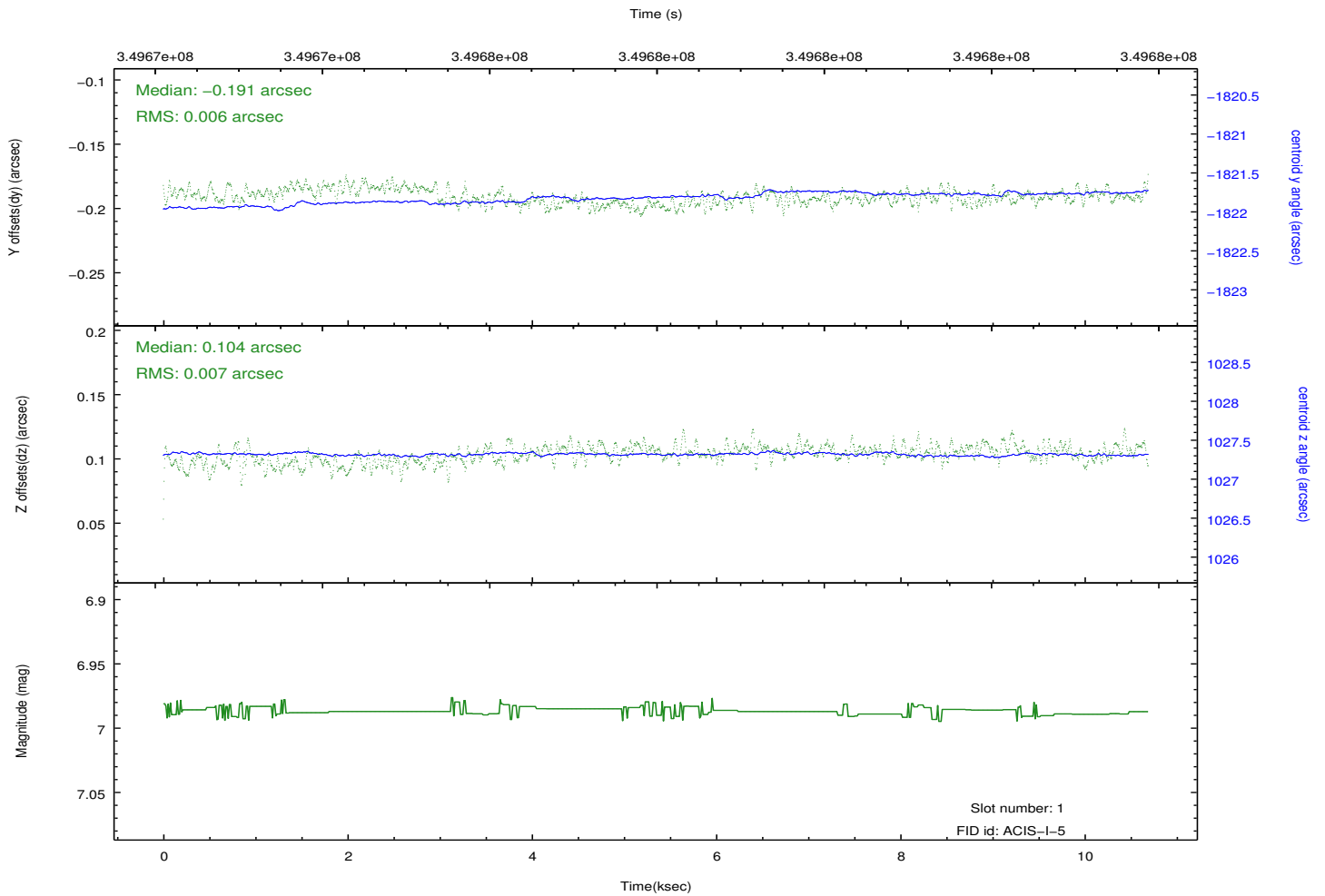
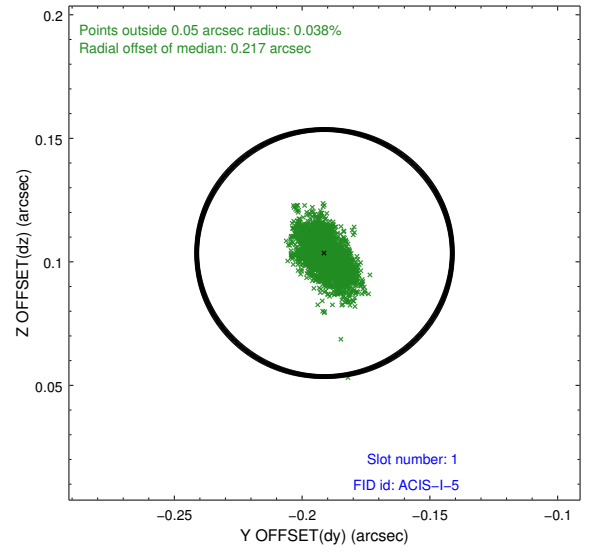
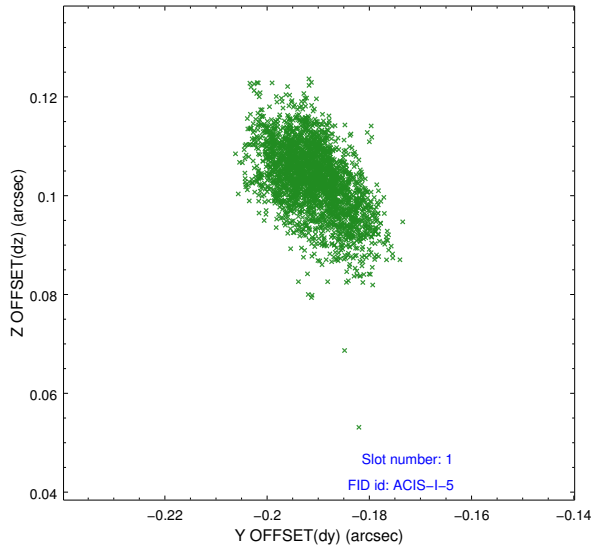


2.5 FID Slots

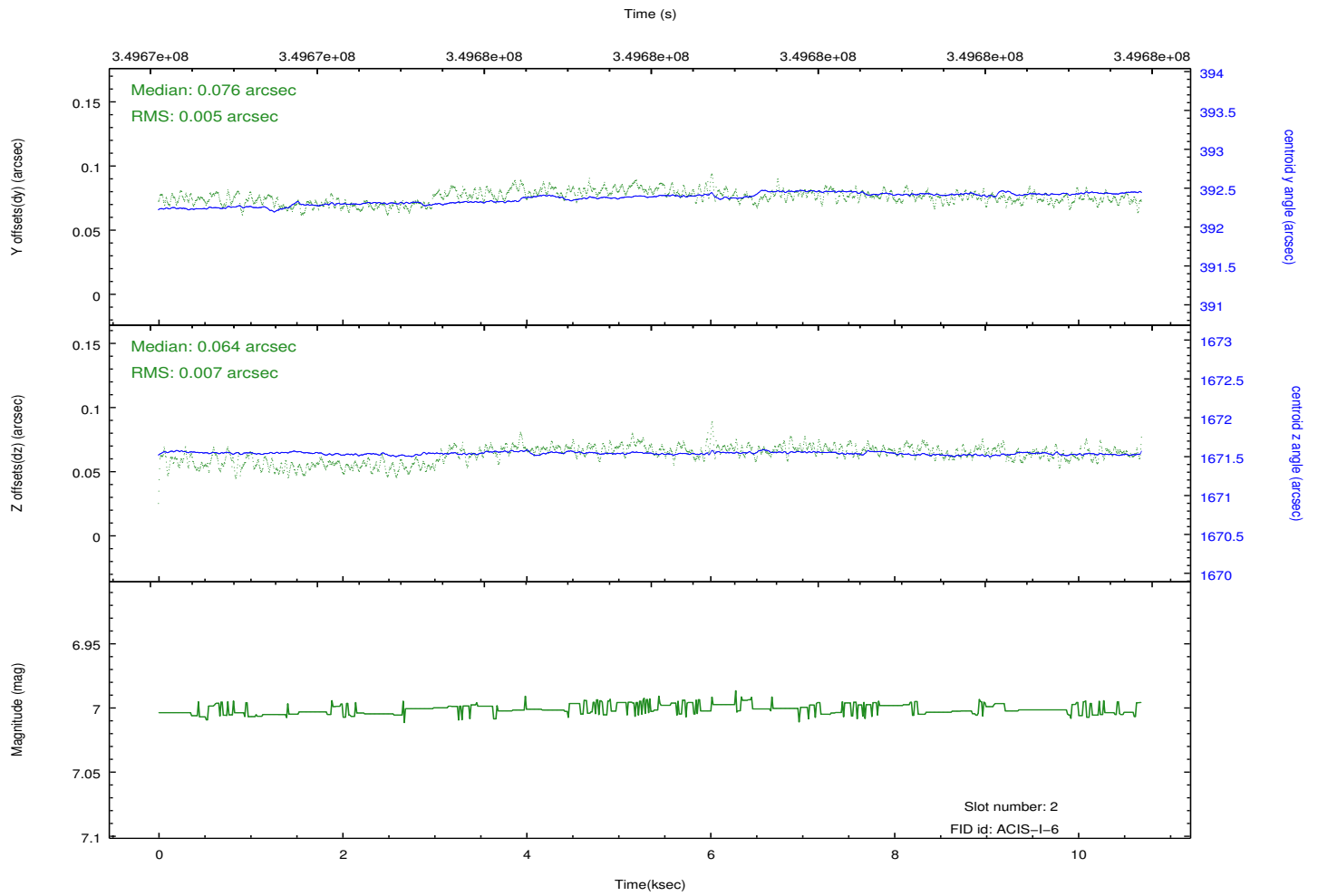
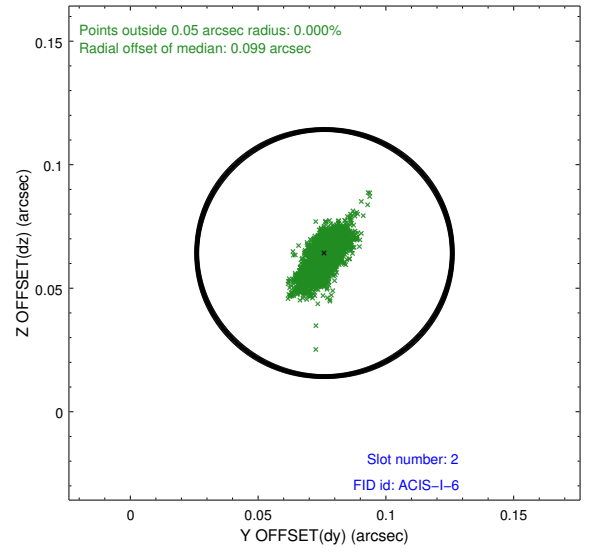
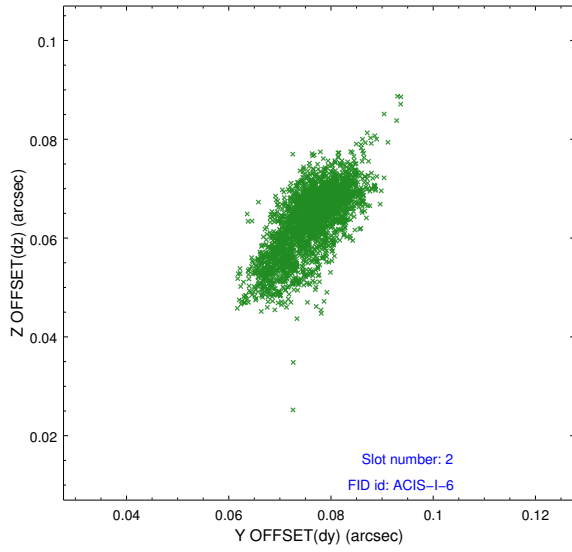
2.5.1 Slot 0



2.5.2 Slot 1



2.5.3 Slot 2



A Summary

A.1 Status

V&V Scientist	Jen Lauer
V&V Date (YYYY-MM-DD)	2012.06.04
V&V Edition	1
V&V Disposition and Status	OK
V&V Charge Time	10.0408591

A.2 Comments

Optional chip CCD S3 not used.