

# V&V Reference Report

## L2 ASCDS Version : 8.4.4

Observation 9239 - L2 Version 3  
Chandra X-Ray Center

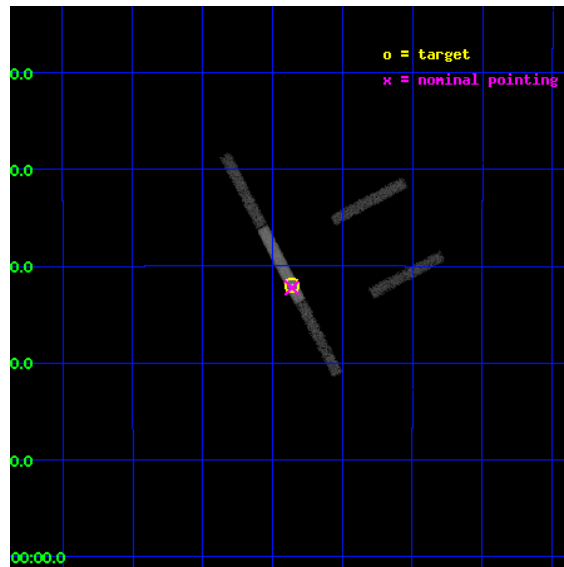
L2 Processing Date : May 18 2012

## Contents

<b>1</b>	<b>Front</b>	<b>2</b>
<b>2</b>	<b>OBI</b>	<b>3</b>
2.1	OBI . . . . .	3
2.1.1	Images . . . . .	3
2.1.2	Bias . . . . .	3
2.1.3	Parameters . . . . .	4
2.1.4	Events . . . . .	4
2.2	Compared Parameters . . . . .	5
2.3	Aspect . . . . .	6
2.4	Star Slots . . . . .	9
2.4.1	Slot 3 . . . . .	9
2.4.2	Slot 4 . . . . .	10
2.4.3	Slot 5 . . . . .	11
2.4.4	Slot 6 . . . . .	12
2.5	FID Slots . . . . .	13
2.5.1	Slot 0 . . . . .	13
2.5.2	Slot 1 . . . . .	14
2.5.3	Slot 2 . . . . .	15
<b>A</b>	<b>Summary</b>	<b>16</b>
A.1	Status . . . . .	16
A.2	Comments . . . . .	16

# 1 Front

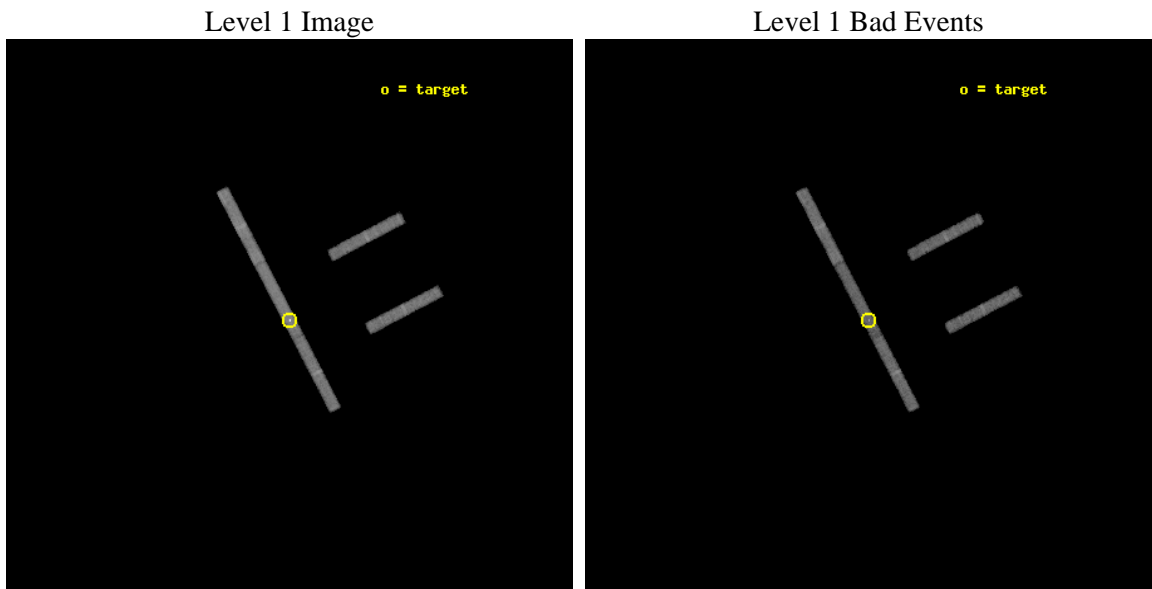
seq_num	701680	Sequence number
obs_id	9239	Observation id
title	Dissecting Accretion Disks	Proposal title
observer	Prof. Christopher Kochanek	Principal investigator
object	RXJ1131-1231	Source name
dtcycle	0	&#160
cycle	P	events from which exps? Prim/Second/Both
ra_targ	172.965	Observer's specified target RA [deg]
dec_targ	-12.5325	Observer's specified target Dec [deg]
ra_nom	172.9653697821	Nominal RA [deg]
dec_nom	-12.537330511895	Nominal Dec [deg]
roll_nom	242.45693989862	Nominal Roll [deg]
revision	3	Processing version of data
ontime	15115.099742532	Sum of GTIs [s]
livetime	14278.000944311	Livetime [s]
ontime2	15115.099742532	Sum of GTIs [s]
ontime3	15115.099742532	Sum of GTIs [s]
ontime6	15115.099742532	Sum of GTIs [s]
ontime7	15115.099742532	Sum of GTIs [s]
ontime8	15114.35870254	Sum of GTIs [s]
l2events	30561	Number of level 2 events



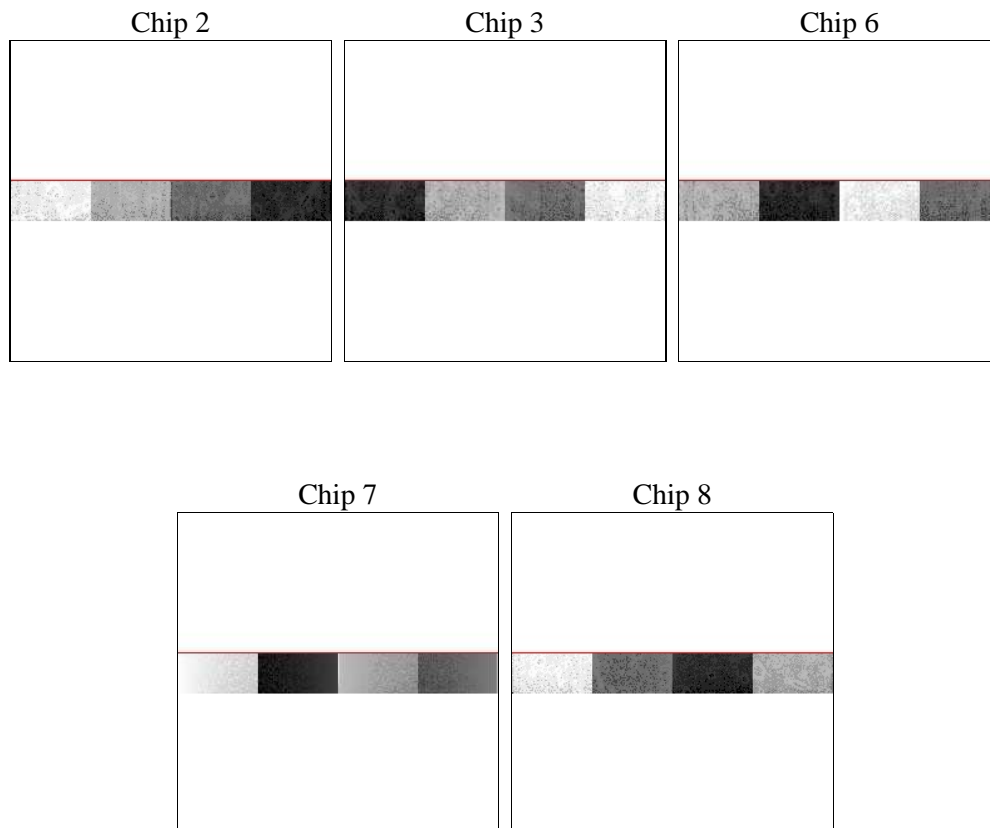
## 2 OBI

### 2.1 OBI

#### 2.1.1 Images



#### 2.1.2 Bias



### 2.1.3 Parameters

obi_num	0	Obi number	sched_exp_time	15000.000000	[s] Scheduled observation exposure time
ascdsver	8.4.4	Processing system revision	ontime	15115.099742532	Sum of GTIs [s]
caldbver	4.4.9	&#160	ontime2	15115.099742532	Sum of GTIs [s]
date	2012-05-18T14:21:17	Date and time of file creation	ontime3	15115.099742532	Sum of GTIs [s]
revision	3	Processing version of data	ontime6	15115.099742532	Sum of GTIs [s]
			ontime7	15115.099742532	Sum of GTIs [s]
			ontime8	15114.35870254	Sum of GTIs [s]
			l1events	147969	Number of level 1 events

### 2.1.4 Events

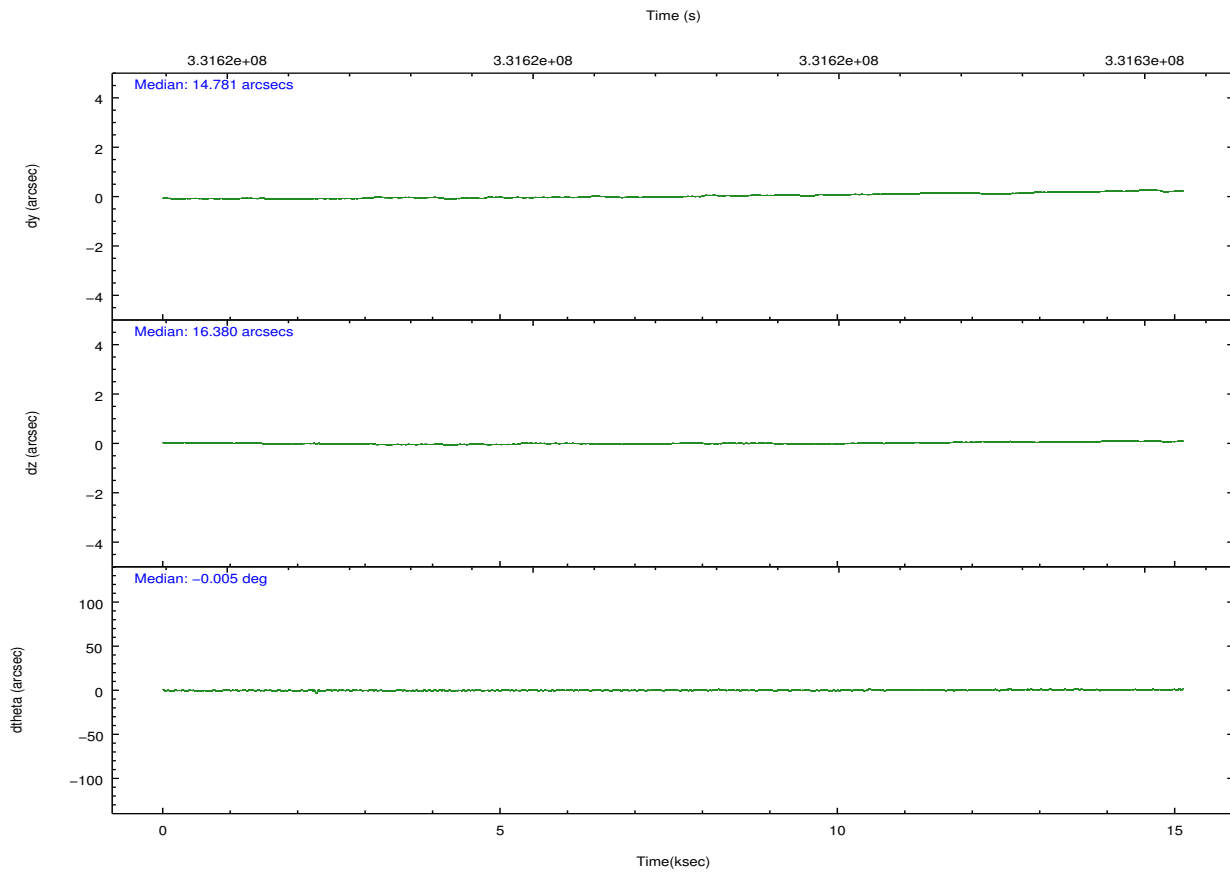
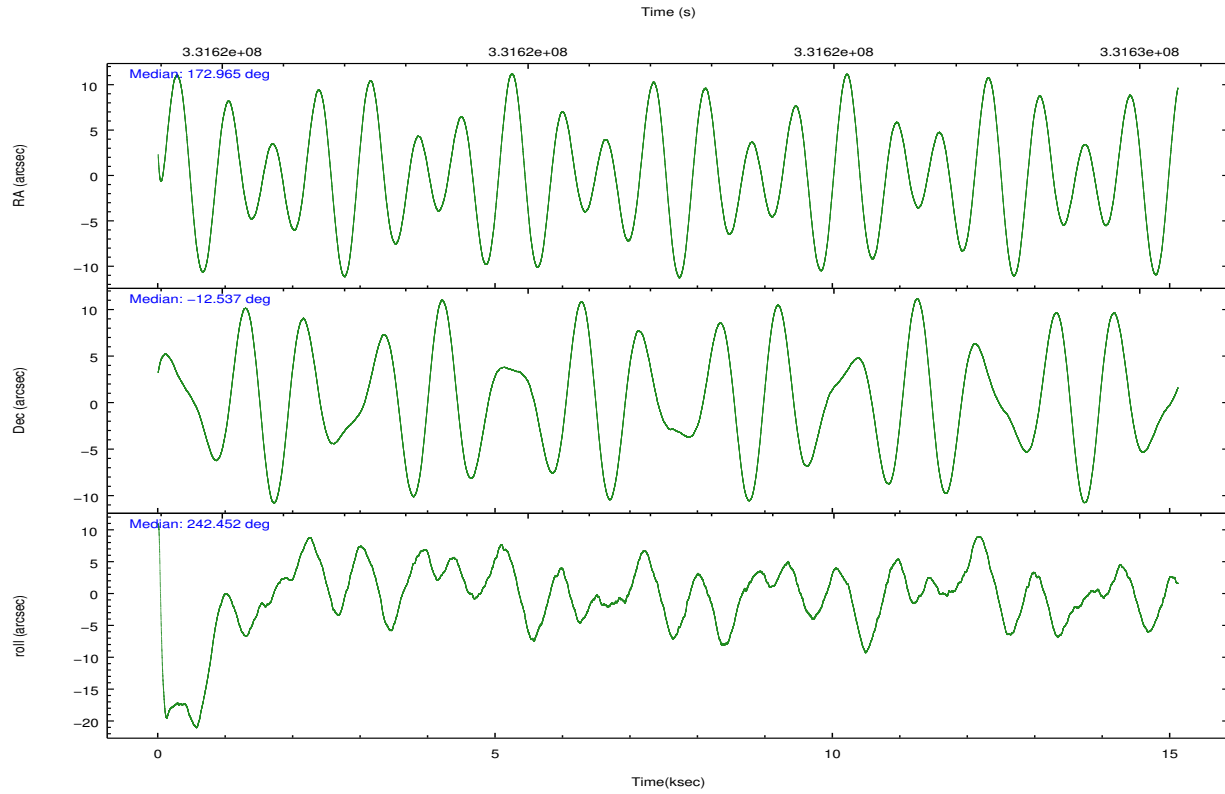
	ccd 2	ccd 3	ccd 6	ccd 7	ccd 8
level 1 events	23789	23841	25598	39946	34795
rejected events	21062	21052	22749	18084	27930
rejected %	88%	88%	88%	45%	80%

	ccd 2	ccd 3	ccd 6	ccd 7	ccd 8
grade 0 events	1089	1094	997	4194	1759
	4%	4%	3%	10%	5%
grade 1 events	10	6	5	104	14
	0%	0%	0%	0%	0%
grade 2 events	516	471	562	5262	1542
	2%	1%	2%	13%	4%
grade 3 events	462	458	422	2483	815
	1%	1%	1%	6%	2%
grade 4 events	436	431	451	2503	787
	1%	1%	1%	6%	2%
grade 5 events	797	902	971	3132	1262
	3%	3%	3%	7%	3%
grade 6 events	397	481	571	8170	2248
	1%	2%	2%	20%	6%
grade 7 events	20082	19998	21619	14098	26368
	84%	83%	84%	35%	75%

## 2.2 Compared Parameters

Parameter	Planned	Actual	Parameter	Planned	Actual
Instrument	ACIS	ACIS	Obspar format version number	7	7
Detector	ACIS-23678	ACIS-23678	Obspar file type	PREDICTED	ACTUAL
Grating	NONE	NONE	Obspar update status	NONE	UPDATED
Data mode	VFAINT	VFAINT	Number of optional ACIS chips dropped	0	0
Observation mode	POINTING	POINTING	On-chip summing requested	N	N
[deg] Pointing RA	172.963776	172.965369782098	Subarray requested	CUSTOM	1/8
[deg] Pointing Dec	-12.510037	-12.53733051189532	Subarray start row	449	449
[deg] Pointing Roll	242.299945	242.4569398986196	Subarray row count	128	128
[mm] SIM focus pos	-0.684267	-0.6828225247311905	Alternating exposures requested	N	N
[mm] SIM defocus	0	0.001444936568705701	[s] Primary exposure time	0.000000	0.7
[mm] SIM translation stage pos	-190.132523	-190.1425803651734			
[mm] SIM translation stage offset	0	0.01005778216563158			
[s] Observation start time (MET)	331614843.184000	331613661.51051			
Observation start date	2008-07-05T03:12:58	2008-07-05T02:54:21			
[s] Observation end time (MET)	331629843.184000	331630762.61135			
Observation end date	2008-07-05T07:22:58	2008-07-05T07:39:22			
Read mode	TIMED	TIMED			





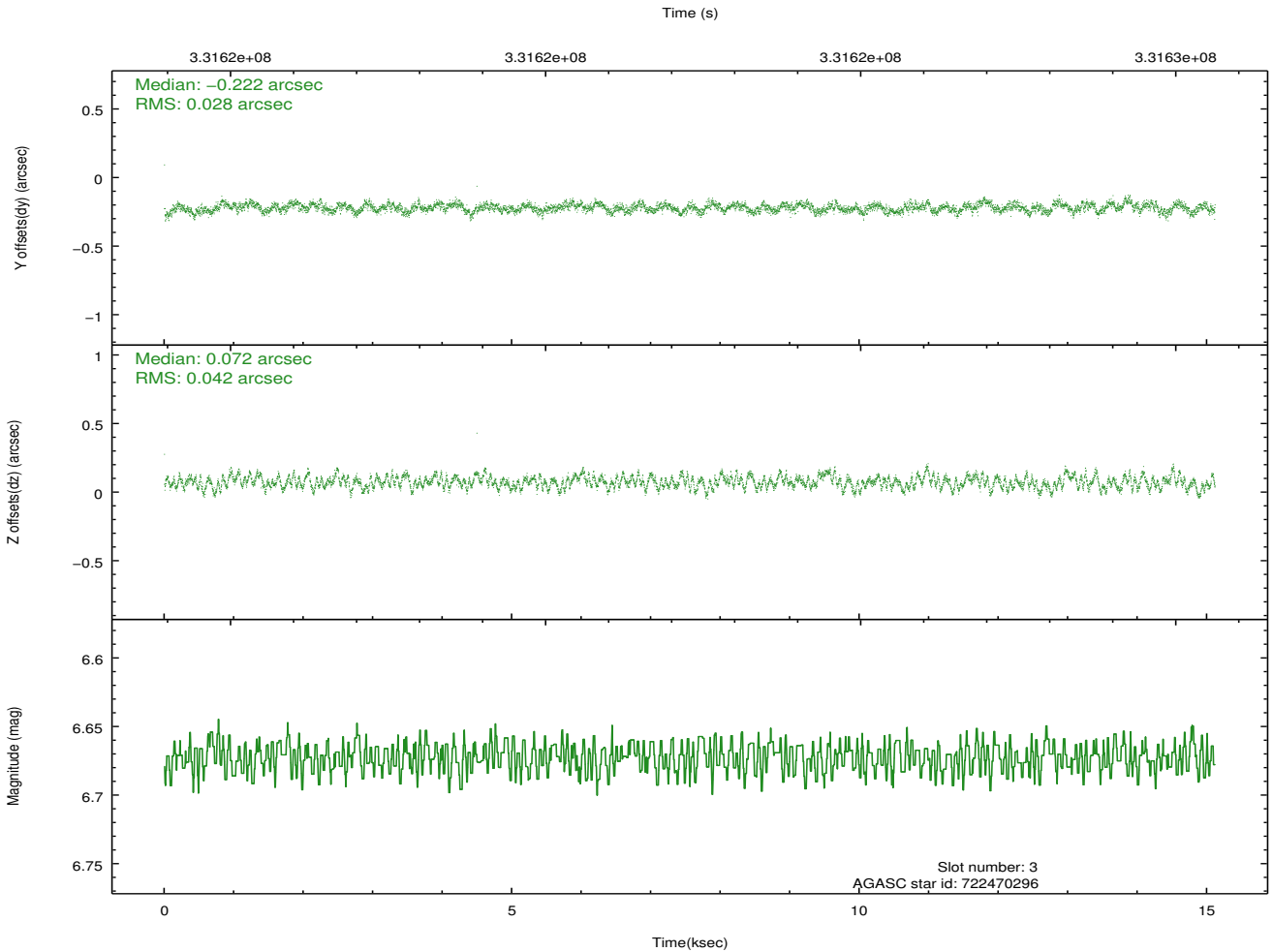
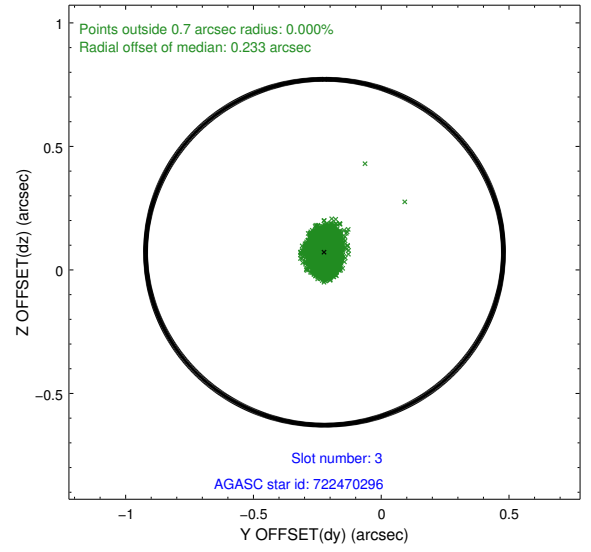
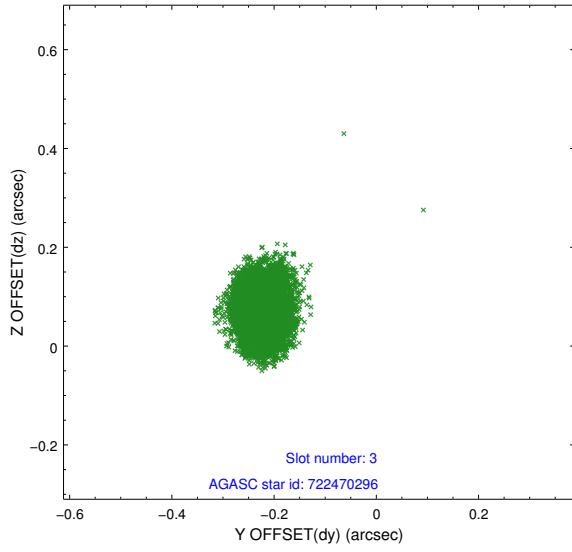
### Slot Statistics

slot	status	id	mag	n_pts	med_dy	med_dz	dr1	dr2	ra	dec	mean_y	mean_z
0	FID	ACIS-S-1	6.95	3687	0.065	-0.072	0.010	0.020	0.000000	0.000000	928.30	-1733.46
1	FID	ACIS-S-5	6.99	3687	-0.123	0.035	0.010	0.023	0.000000	0.000000	-1820.69	163.93
2	FID	ACIS-S-6	7.09	3687	0.035	0.048	0.010	0.018	0.000000	0.000000	393.54	808.21
3	GUIDE	722470296	6.67	7375	-0.222	0.072	0.053	0.087	172.921689	-12.381367	-341.10	-346.40
4	GUIDE	722473176	9.48	7370	-0.126	-0.087	0.109	0.178	172.599746	-12.066793	-815.74	-1876.21
5	GUIDE	722871536	10.03	7360	0.219	-0.010	0.179	0.282	172.202264	-12.768922	2072.18	-1932.22
6	GUIDE	722871728	9.67	7367	0.128	0.037	0.125	0.201	173.202235	-12.568355	-202.50	839.38
7	OMITTED		0.00	0	0.000	0.000	0.000	0.000	0.000000	0.000000	0.00	0.00

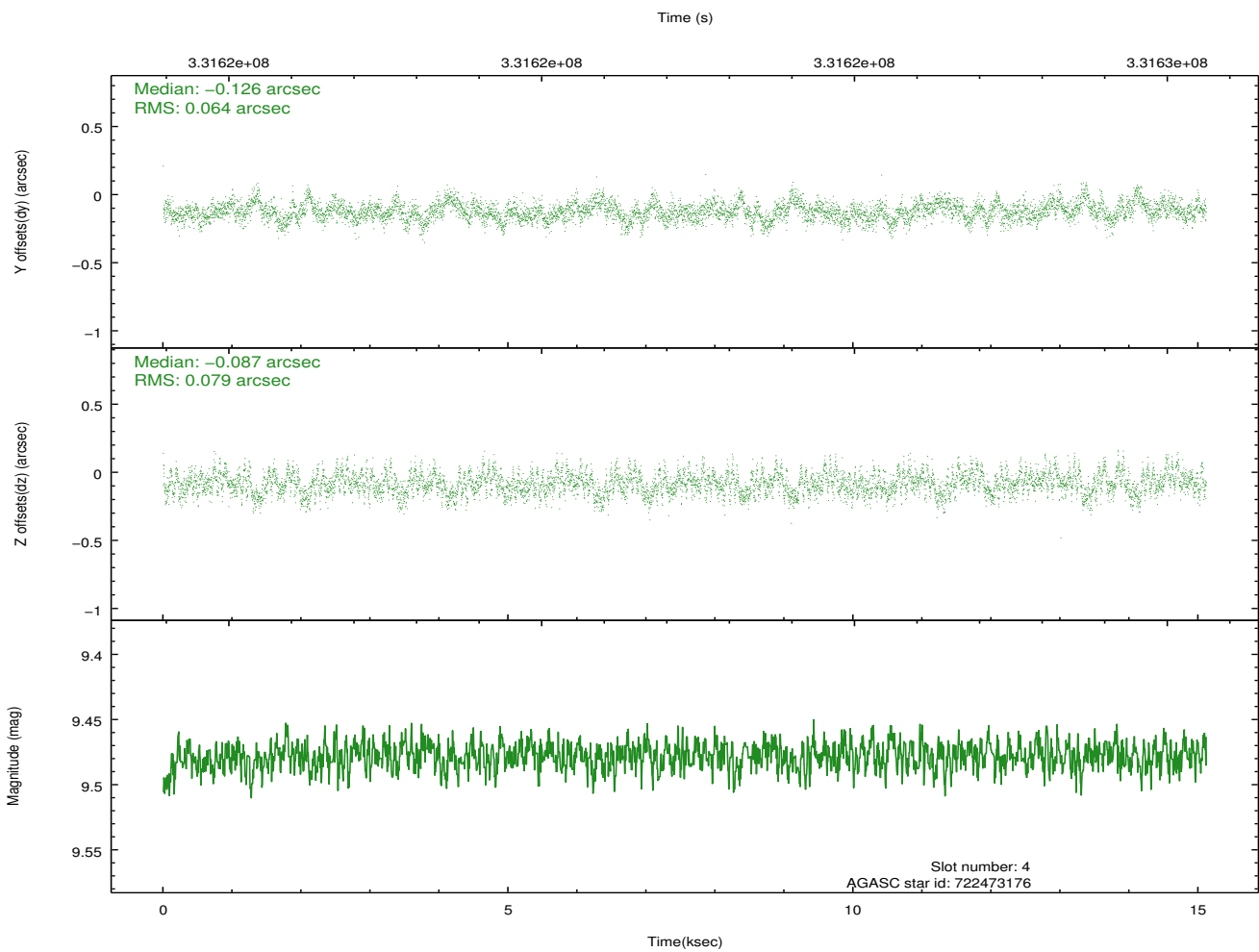
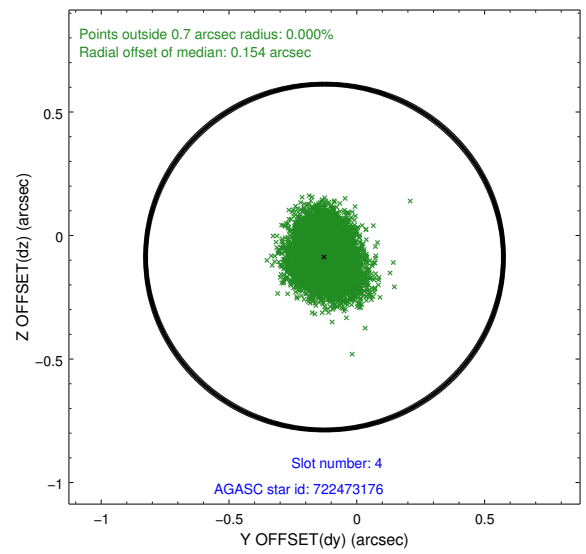
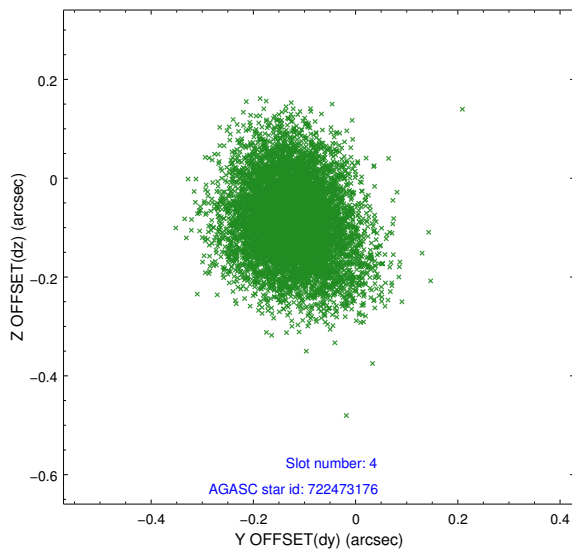
∞

## 2.4 Star Slots

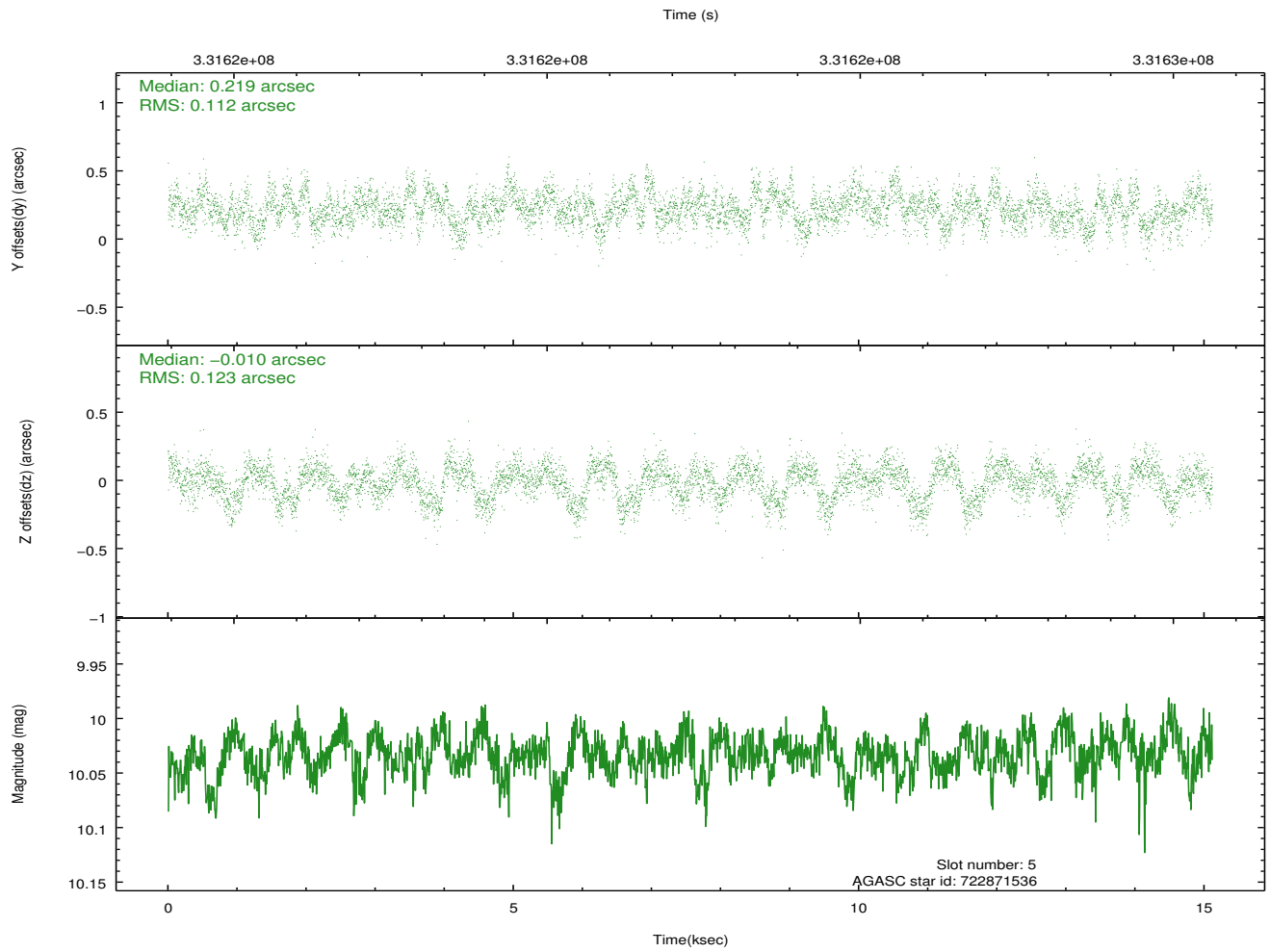
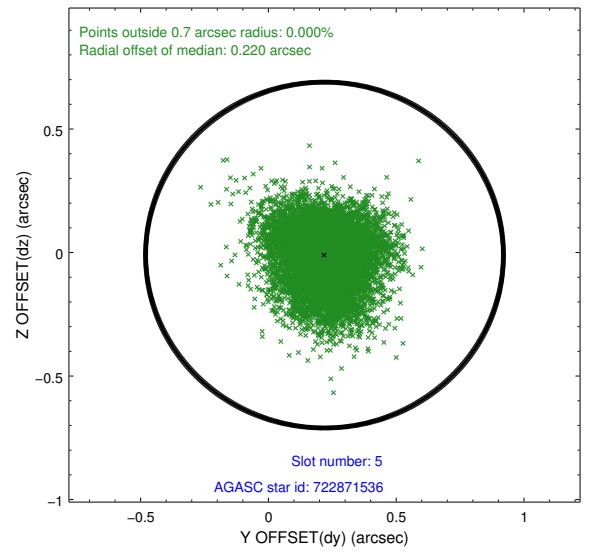
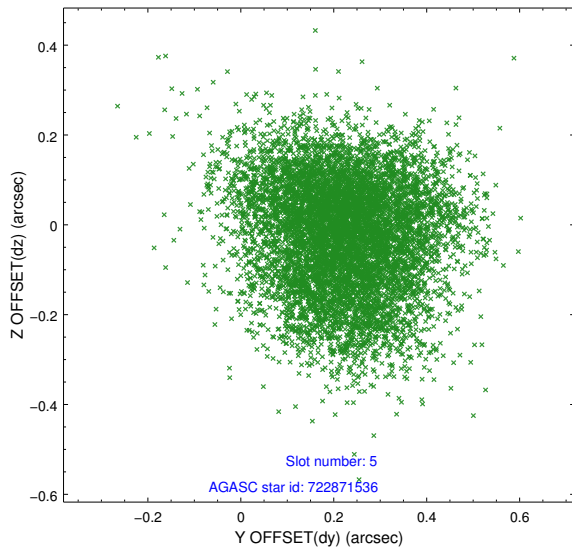
### 2.4.1 Slot 3



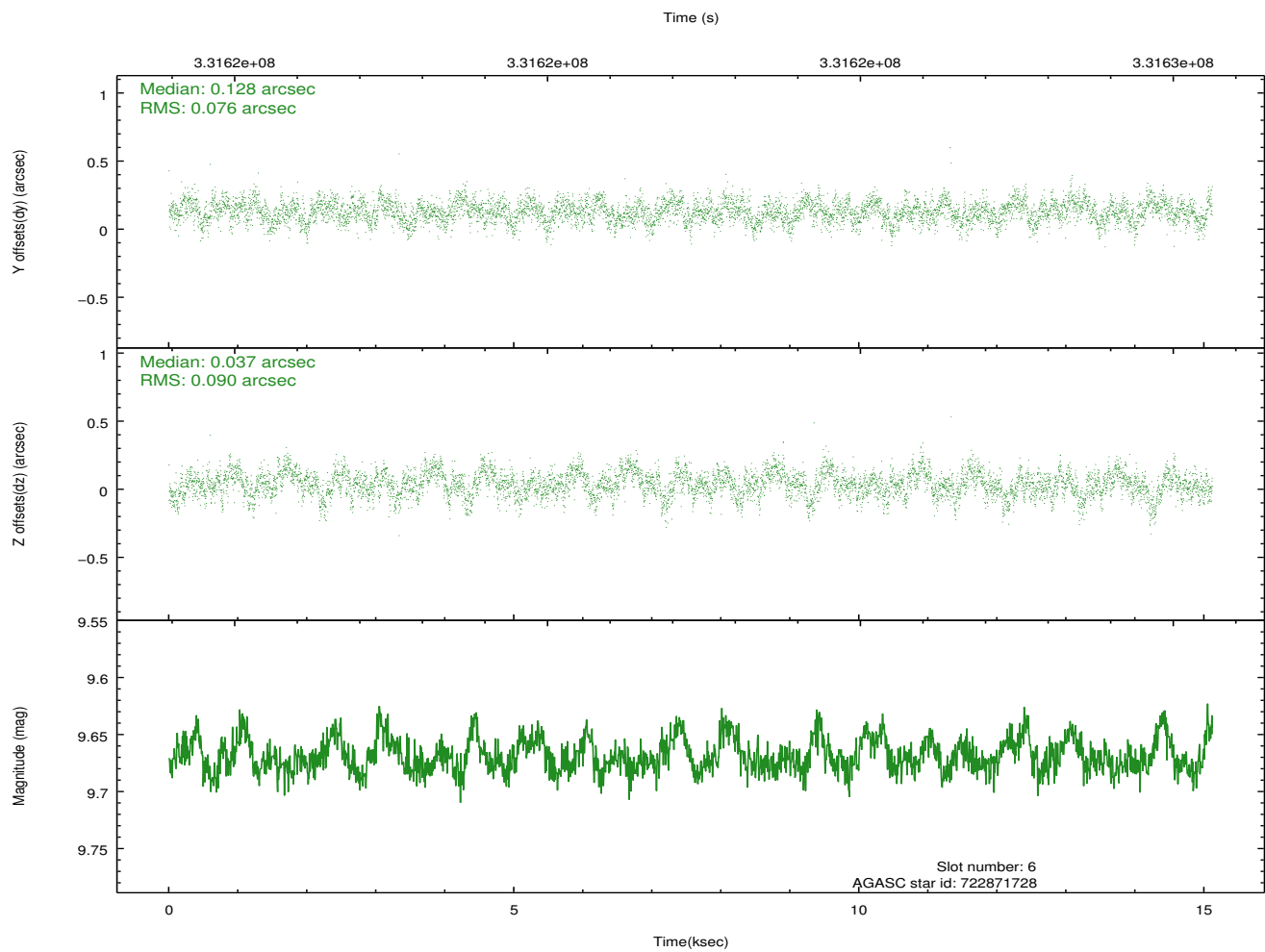
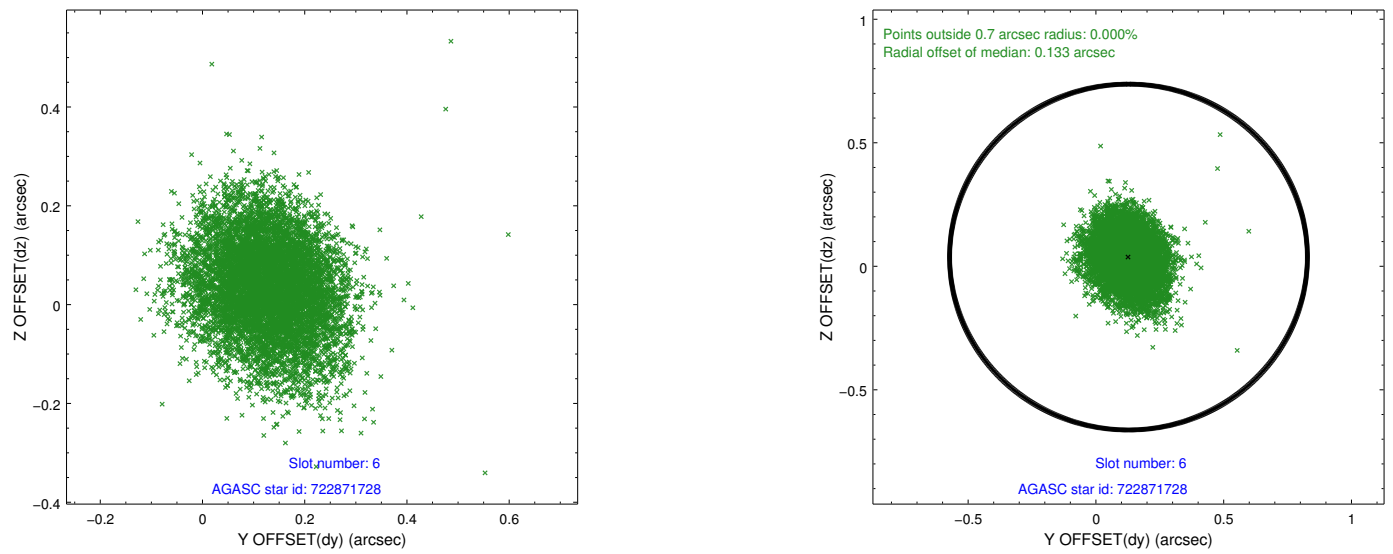
## 2.4.2 Slot 4



### 2.4.3 Slot 5

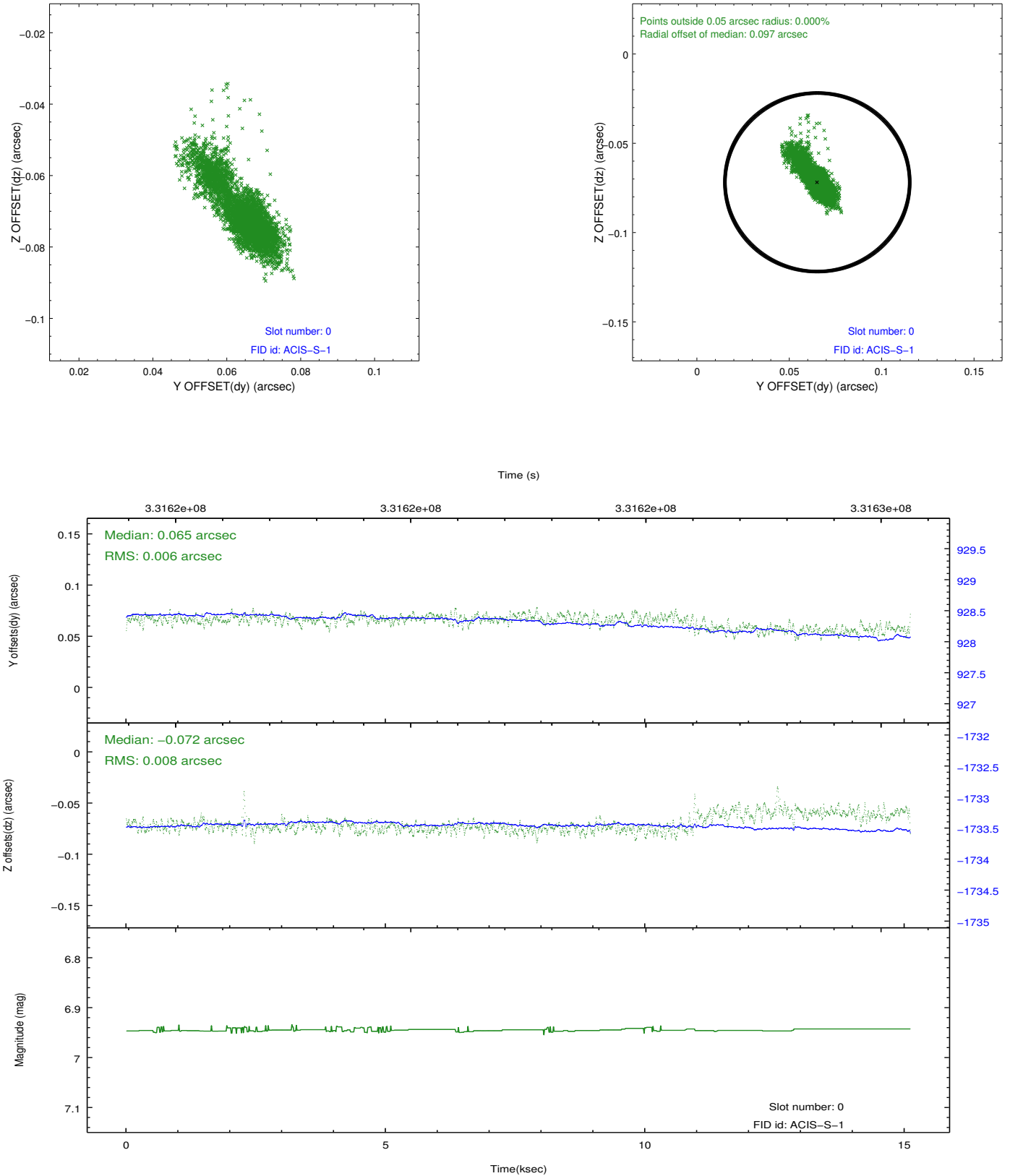


## 2.4.4 Slot 6

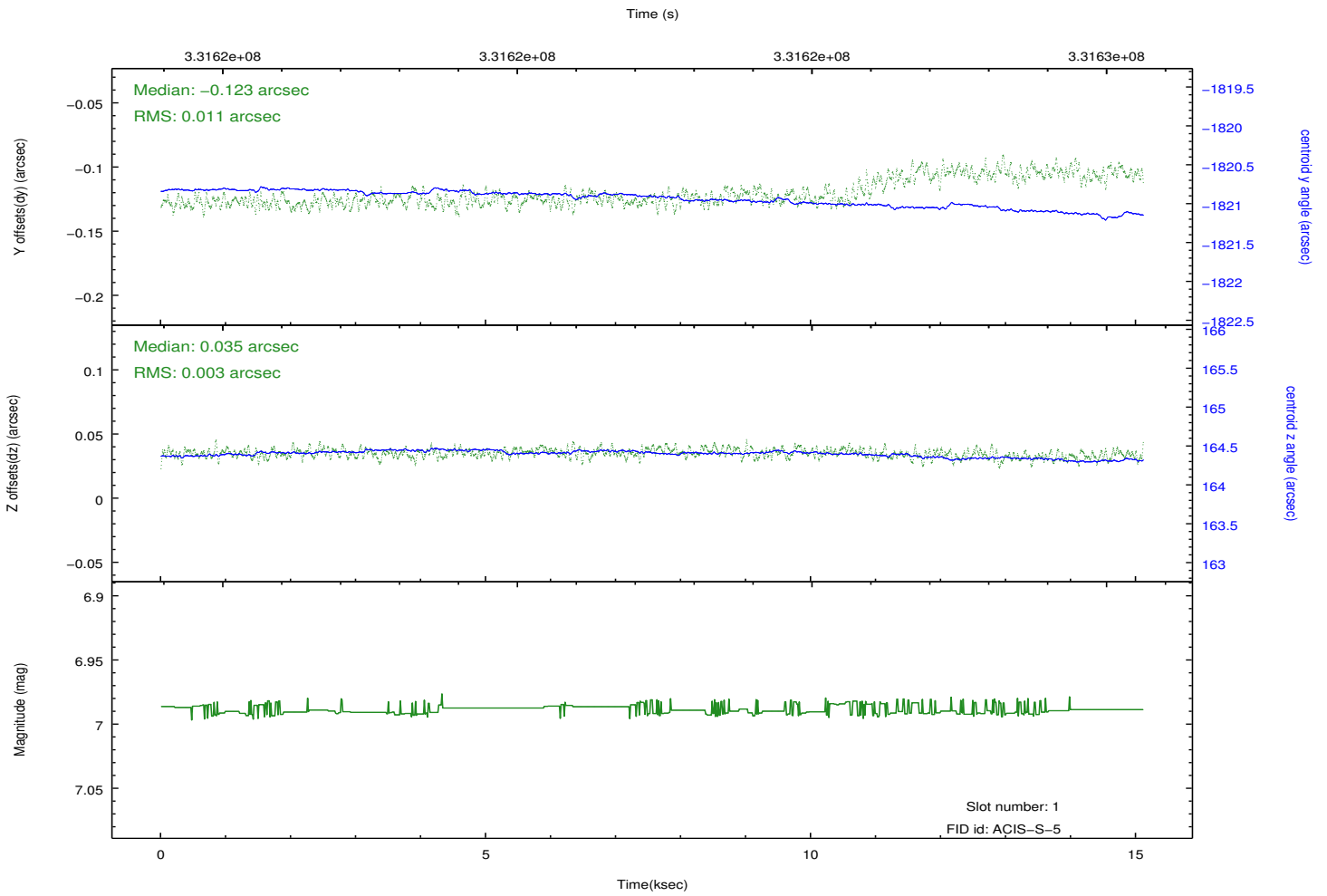
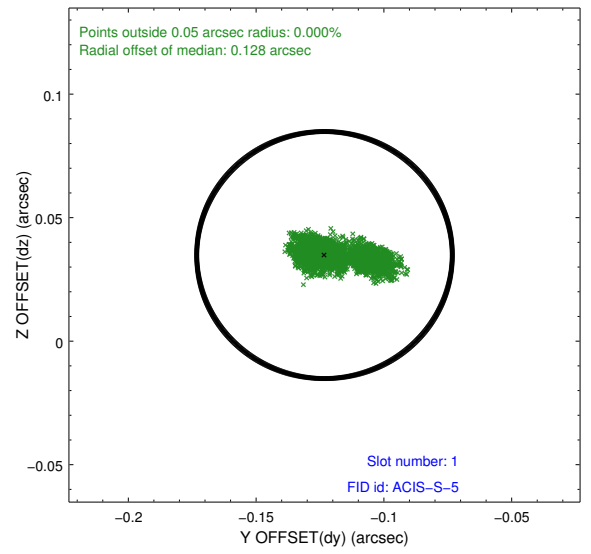
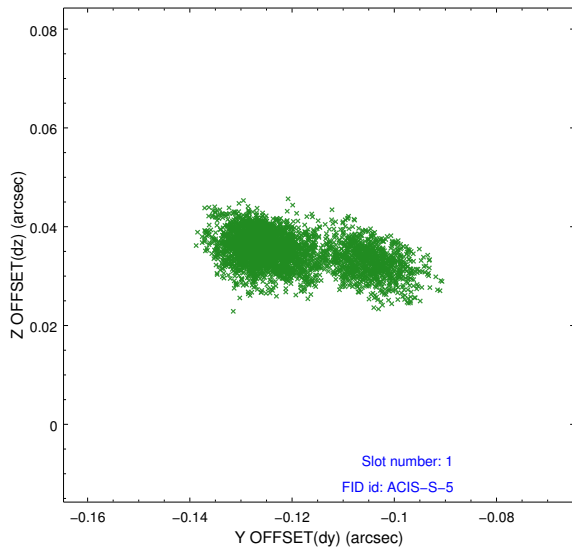


## 2.5 FID Slots

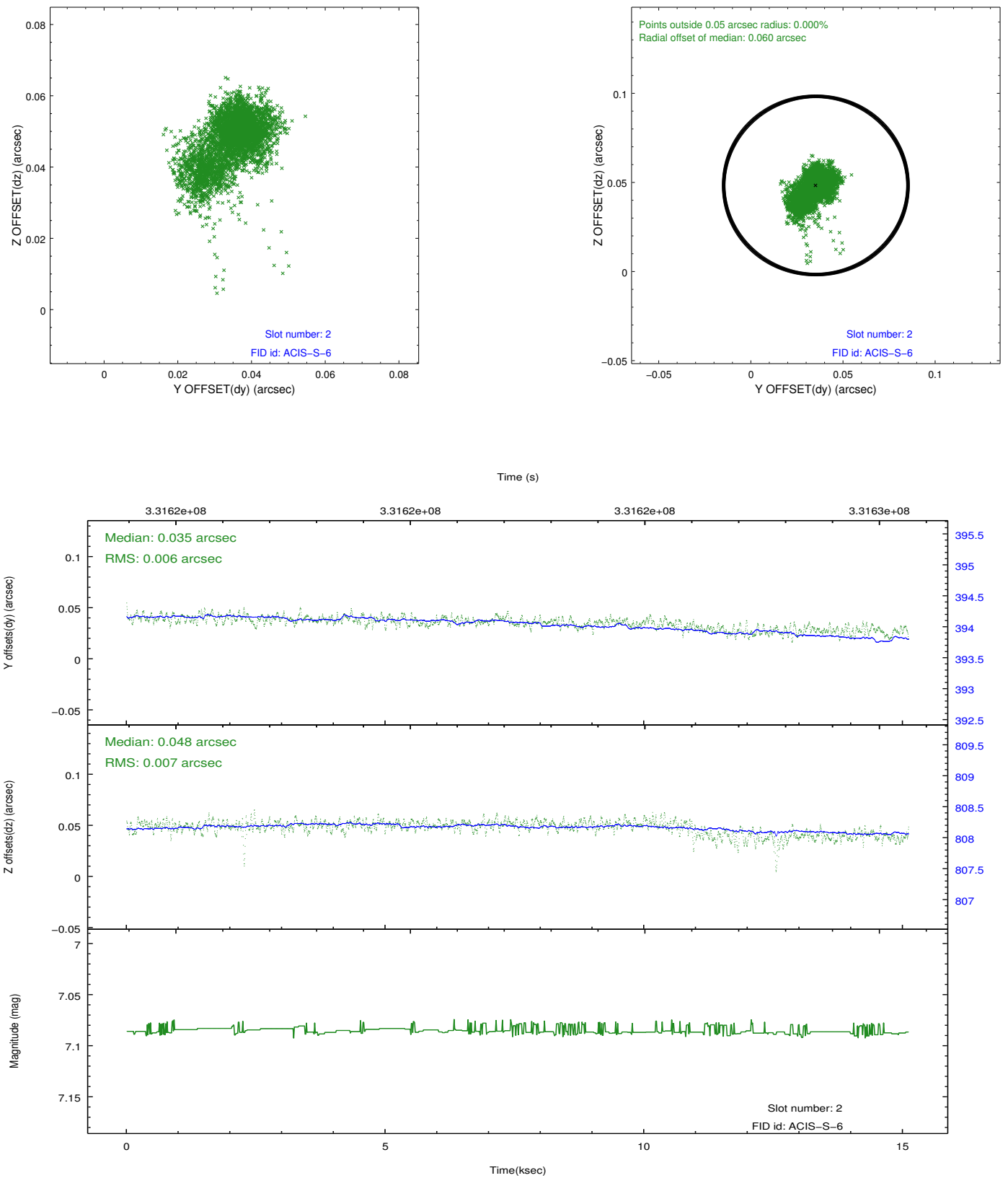
### 2.5.1 Slot 0



## 2.5.2 Slot 1



### 2.5.3 Slot 2



# A Summary

## A.1 Status

V&V Scientist	Beth Sundheim
V&V Date (YYYY-MM-DD)	2012.05.25
V&V Edition	1
V&V Disposition and Status	OK
V&V Charge Time	15.1150997

## A.2 Comments

The guide star in slot 7 was removed from the aspect solution due to poor data quality. The aspect solution is improved by the removal of this star from the solution.