

V&V Reference Report

L2 ASCDS Version : 8.4.4

Observation 9409 - L2 Version 2
Chandra X-Ray Center

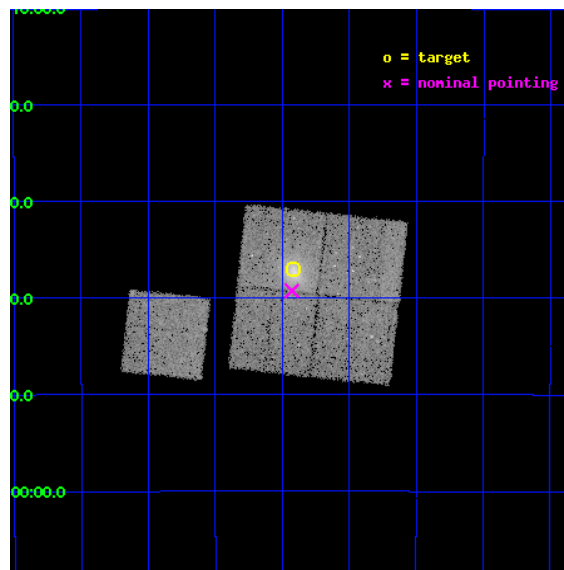
L2 Processing Date : May 9 2012

Contents

1	Front	2
2	OBI	3
2.1	OBI	3
2.1.1	Images	3
2.1.2	Bias	3
2.1.3	Parameters	4
2.1.4	Events	4
2.2	Compared Parameters	5
2.3	Aspect	6
2.4	Star Slots	9
2.4.1	Slot 3	9
2.4.2	Slot 4	10
2.4.3	Slot 5	11
2.4.4	Slot 6	12
2.4.5	Slot 7	13
2.5	FID Slots	14
2.5.1	Slot 0	14
2.5.2	Slot 1	15
2.5.3	Slot 2	16
A	Summary	17
A.1	Status	17
A.2	Comments	17

1 Front

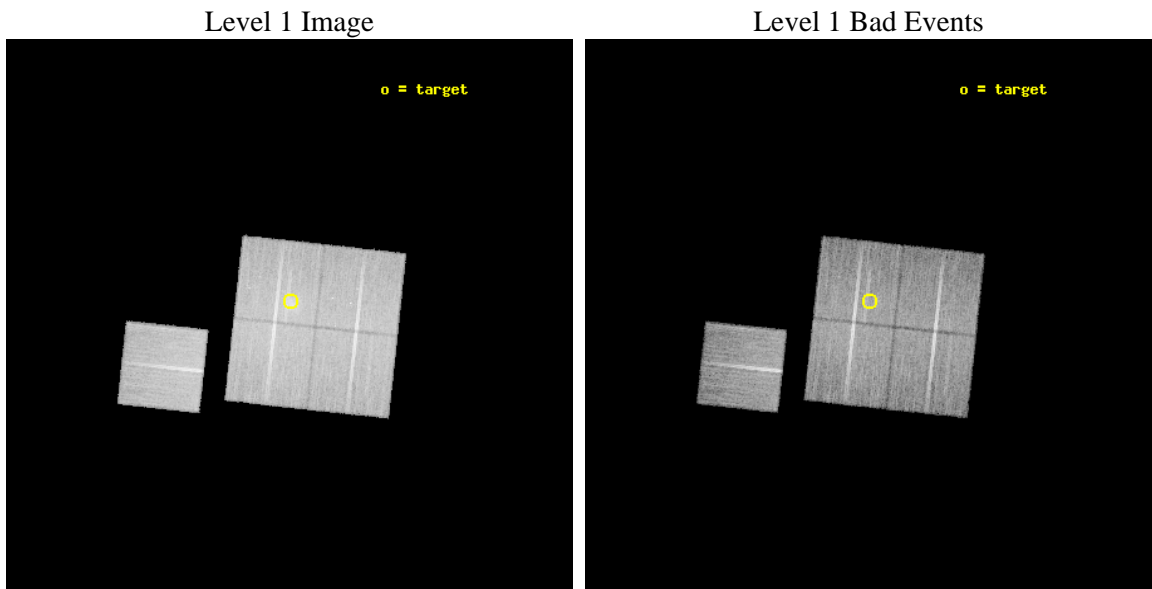
seq_num	800745	Sequence number
obs_id	9409	Observation id
title	LoCuSS: Cluster Mass Comparison with Chandra and HST -- Observational Discrepancy or Agreement in the New Millennium?	Proposal title
observer	Dr Graham Smith	Principal investigator
object	RXCJ0043.4-2037	Source name
dtcycle	0	
cycle	P	events from which exps? Prim/Second/Both
ra_targ	10.854708	Observer's specified target RA [deg]
dec_targ	-20.617056	Observer's specified target Dec [deg]
ra_nom	10.857103819963	Nominal RA [deg]
dec_nom	-20.654726294852	Nominal Dec [deg]
roll_nom	276.21772480843	Nominal Roll [deg]
revision	2	Processing version of data
ontime	20177.900155187	Sum of GTIs [s]
livetime	19914.261034905	Livetime [s]
ontime0	20168.477274239	Sum of GTIs [s]
ontime1	20177.900155187	Sum of GTIs [s]
ontime2	20174.759194911	Sum of GTIs [s]
ontime3	20177.900155187	Sum of GTIs [s]
ontime6	20177.900155187	Sum of GTIs [s]
l2events	80949	Number of level 2 events



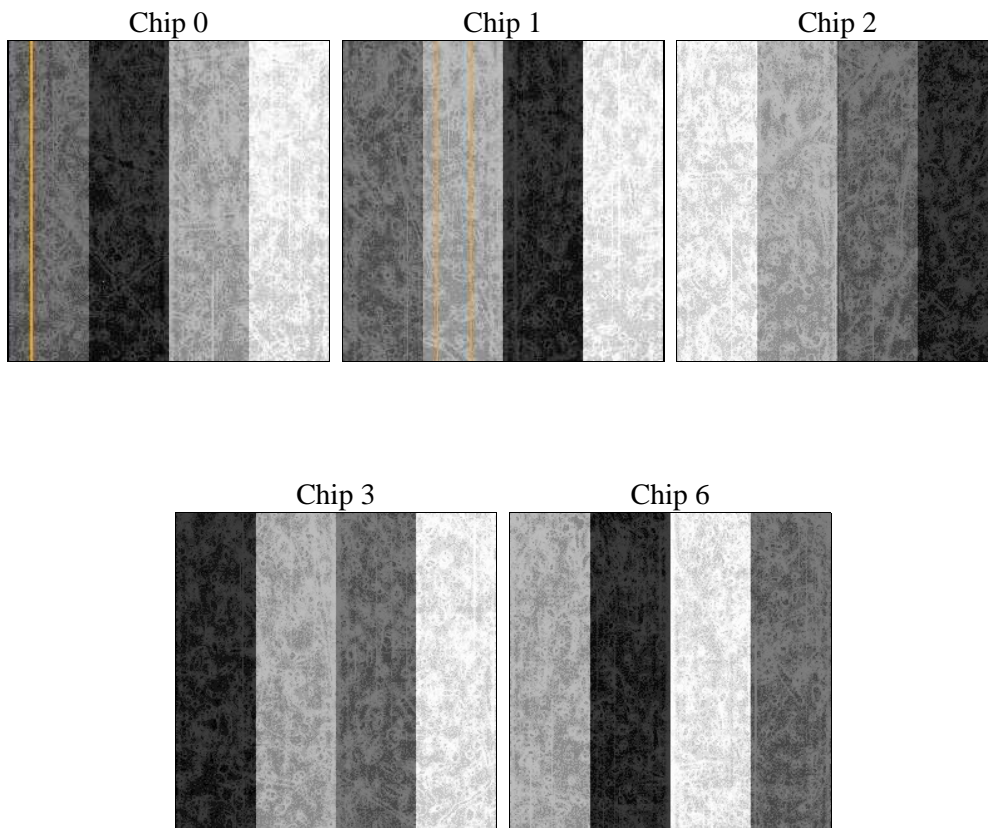
2 OBI

2.1 OBI

2.1.1 Images



2.1.2 Bias



2.1.3 Parameters

obi_num	0	Obi number	sched_exp_time	20000.000000	[s] Scheduled observation exposure time
ascdsver	8.4.4	Processing system revision	ontime	20177.900155187	Sum of GTIs [s]
caldbver	4.4.9	 	ontime0	20168.477274239	Sum of GTIs [s]
date	2012-05-09T03:04:48	Date and time of file creation	ontime1	20177.900155187	Sum of GTIs [s]
revision	2	Processing version of data	ontime2	20174.759194911	Sum of GTIs [s]
			ontime3	20177.900155187	Sum of GTIs [s]
			ontime6	20177.900155187	Sum of GTIs [s]
			l1events	842312	Number of level 1 events

2.1.4 Events

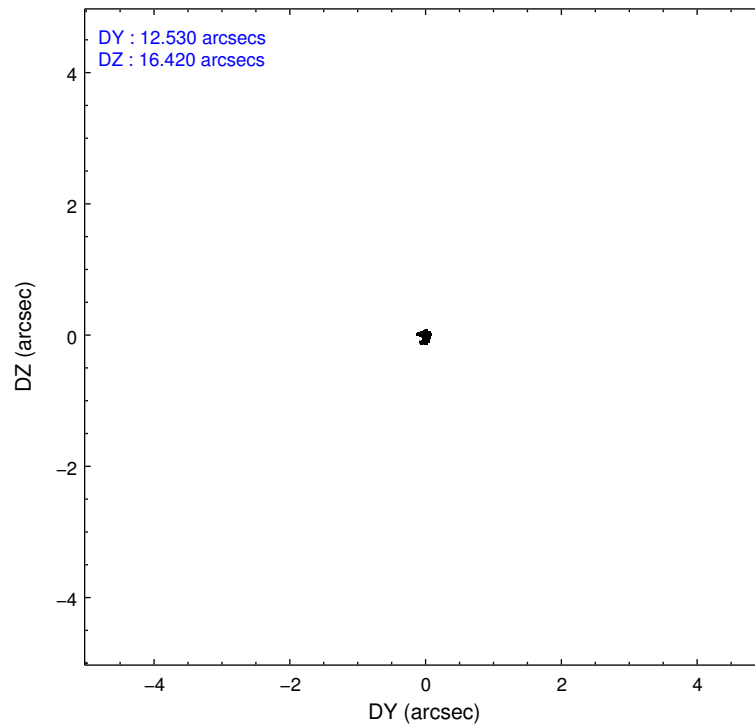
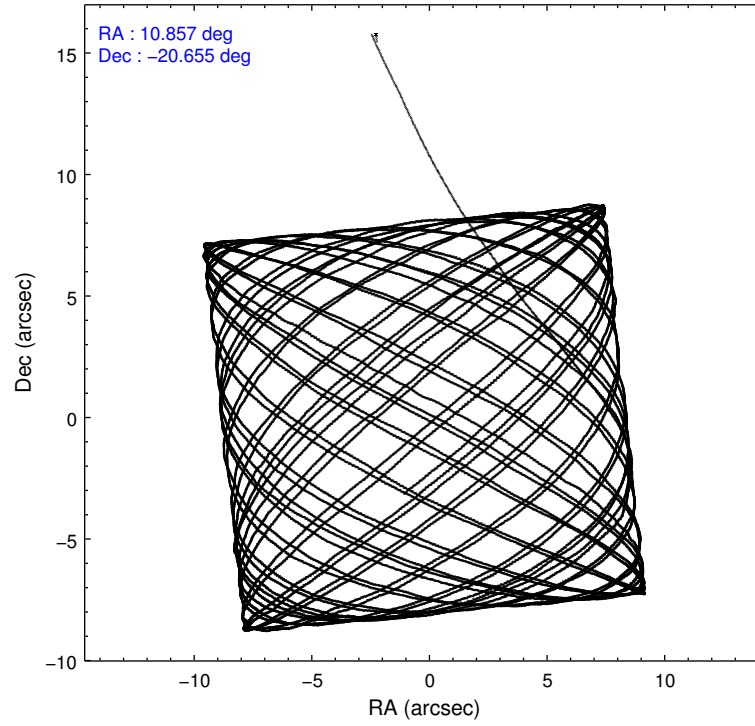
	ccd 0	ccd 1	ccd 2	ccd 3	ccd 6
level 1 events	160219	157828	178872	175849	169544
rejected events	143792	138069	162322	150148	152636
rejected %	89%	87%	90%	85%	90%

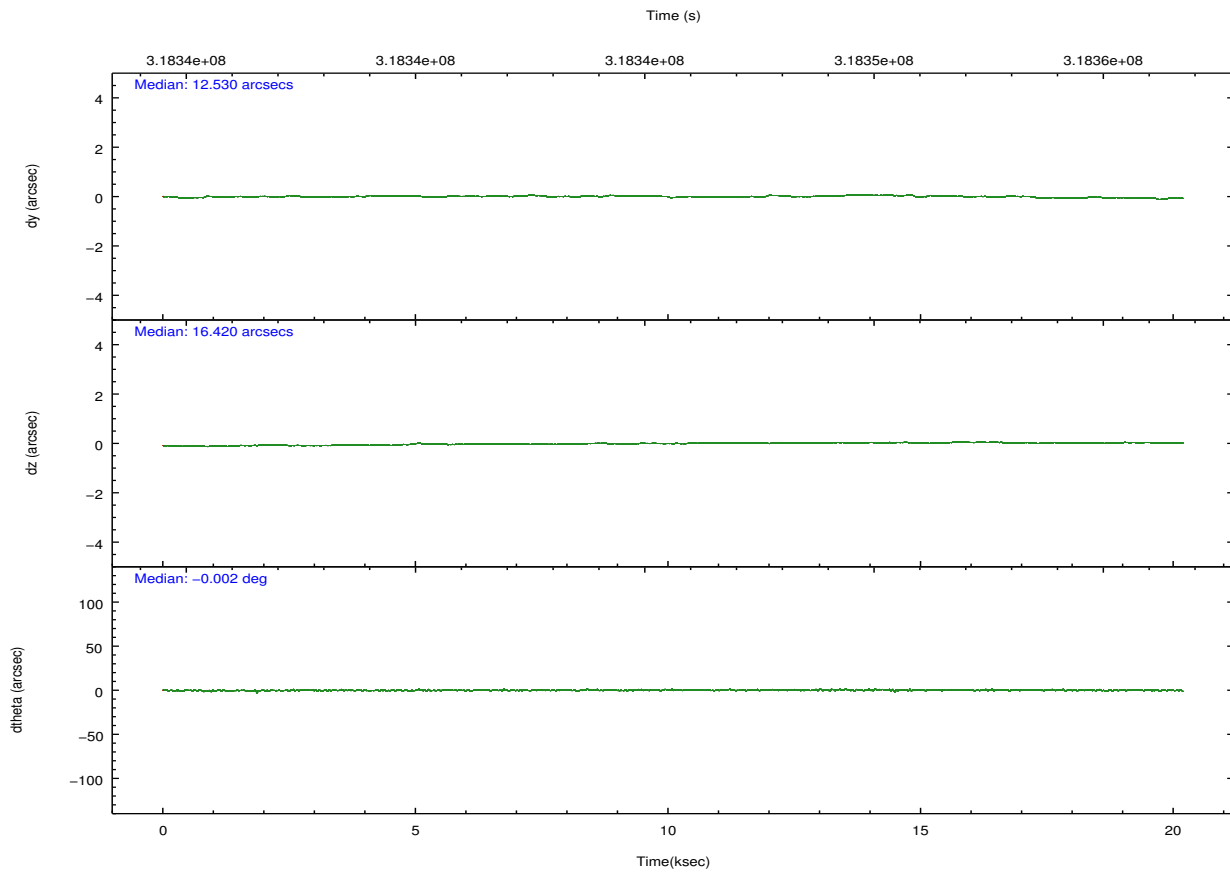
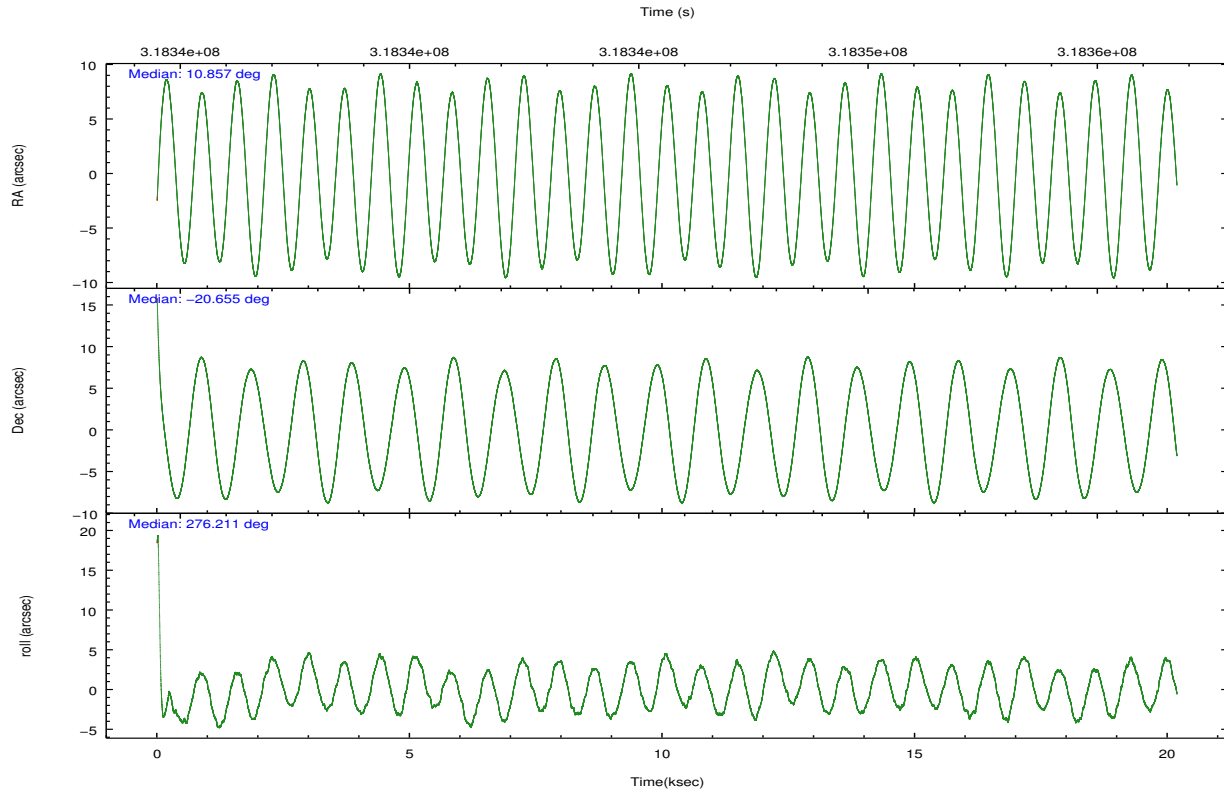
	ccd 0	ccd 1	ccd 2	ccd 3	ccd 6
grade 0 events	6099	7928	6246	14062	6089
	3%	5%	3%	7%	3%
grade 1 events	89	88	102	153	73
	0%	0%	0%	0%	0%
grade 2 events	4061	4509	4057	4544	3761
	2%	2%	2%	2%	2%
grade 3 events	1955	2042	1802	1959	1931
	1%	1%	1%	1%	1%
grade 4 events	1685	2065	1791	2165	1940
	1%	1%	1%	1%	1%
grade 5 events	6079	6592	5664	6792	6673
	3%	4%	3%	3%	3%
grade 6 events	3169	3799	3172	3515	3678
	1%	2%	1%	1%	2%
grade 7 events	137082	130805	156038	142659	145399
	85%	82%	87%	81%	85%

2.2 Compared Parameters

Parameter	Planned	Actual	Parameter	Planned	Actual
Instrument	ACIS	ACIS	Obspar format version number	7	7
Detector	ACIS-01236	ACIS-01236	Obspar file type	PREDICTED	ACTUAL
Grating	NONE	NONE	Obspar update status	NONE	UPDATED
Data mode	VFAINT	VFAINT	Number of optional ACIS chips dropped	0	0
Observation mode	POINTING	POINTING	On-chip summing requested	N	N
[deg] Pointing RA	10.839626	10.85710381996324	Subarray requested	NONE	NONE
[deg] Pointing Dec	-20.632622	-20.65472629485215	Alternating exposures requested	N	N
[deg] Pointing Roll	276.002860	276.2177248084321	[s] Primary exposure time	0.000000	3.1
[mm] SIM focus pos	-0.782348	-0.7809083437167272			
[mm] SIM defocus	0	0.001439871863259334			
[mm] SIM translation stage pos	-227.592463	-227.5958210972112			
[mm] SIM translation stage offset	-6	-5.996631905718488			
[s] Observation start time (MET)	318335713.184000	318334407.63865			
Observation start date	2008-02-02T10:34:08	2008-02-02T10:13:27			
[s] Observation end time (MET)	318355713.184000	318356186.83971			
Observation end date	2008-02-02T16:07:28	2008-02-02T16:16:26			
Read mode	TIMED	TIMED			

2.3 Aspect





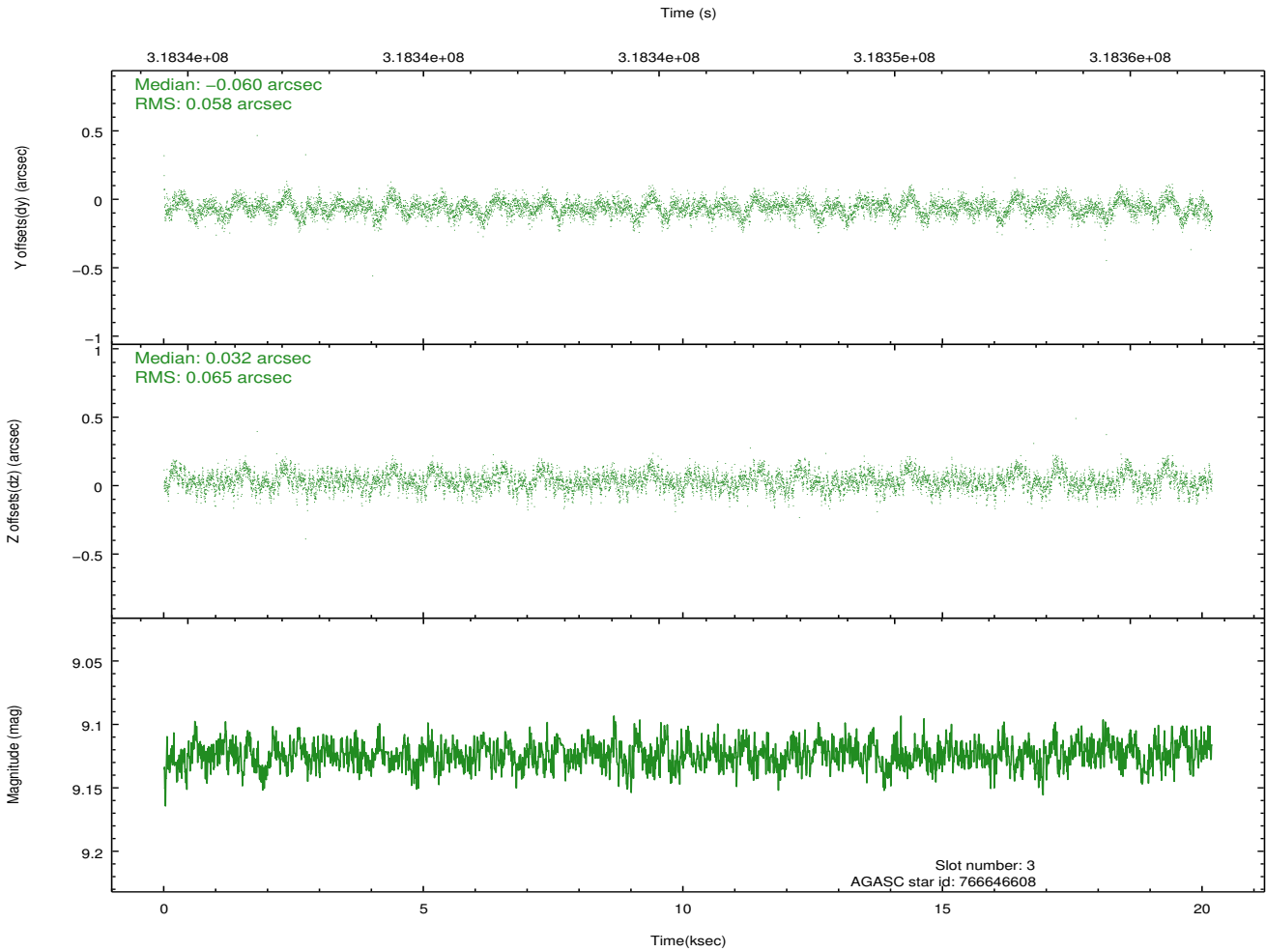
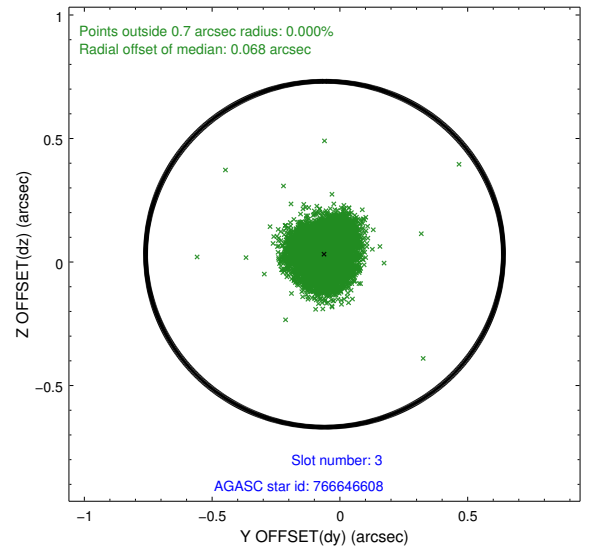
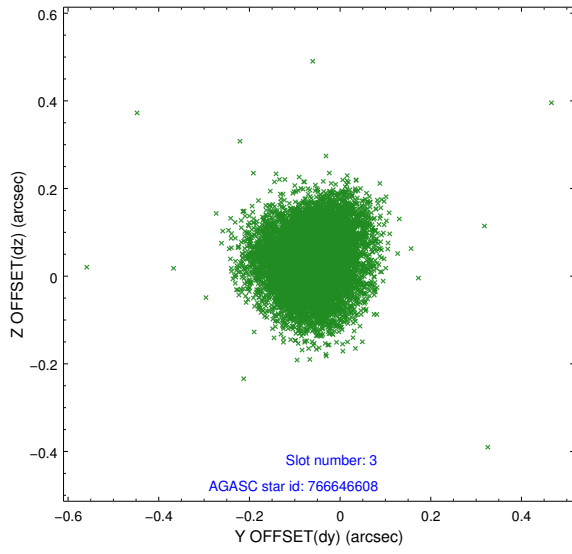
Slot Statistics

slot	status	id	mag	n_pts	med_dy	med_dz	dr1	dr2	ra	dec	mean_y	mean_z
0	FID	ACIS-I-1	7.22	4924	0.100	-0.075	0.006	0.011	0.000000	0.000000	926.99	-963.19
1	FID	ACIS-I-5	7.21	4924	-0.246	0.088	0.006	0.011	0.000000	0.000000	-1821.37	934.33
2	FID	ACIS-I-6	7.23	4924	0.055	0.058	0.007	0.012	0.000000	0.000000	392.28	1579.02
3	GUIDE	766646608	9.12	9839	-0.060	0.032	0.093	0.149	11.216160	-20.336771	-924.46	1375.42
4	GUIDE	766650688	7.10	9845	-0.269	-0.063	0.059	0.093	10.374072	-20.299617	-1354.32	-1438.08
5	GUIDE	766653208	9.42	9833	0.236	0.134	0.140	0.223	10.947629	-21.070490	1606.13	196.30
6	GUIDE	766653384	9.63	9841	0.209	-0.077	0.122	0.194	10.985393	-21.081265	1658.67	317.97
7	GUIDE	766654496	9.40	9839	-0.118	-0.027	0.121	0.188	11.545095	-20.663870	365.87	2350.19

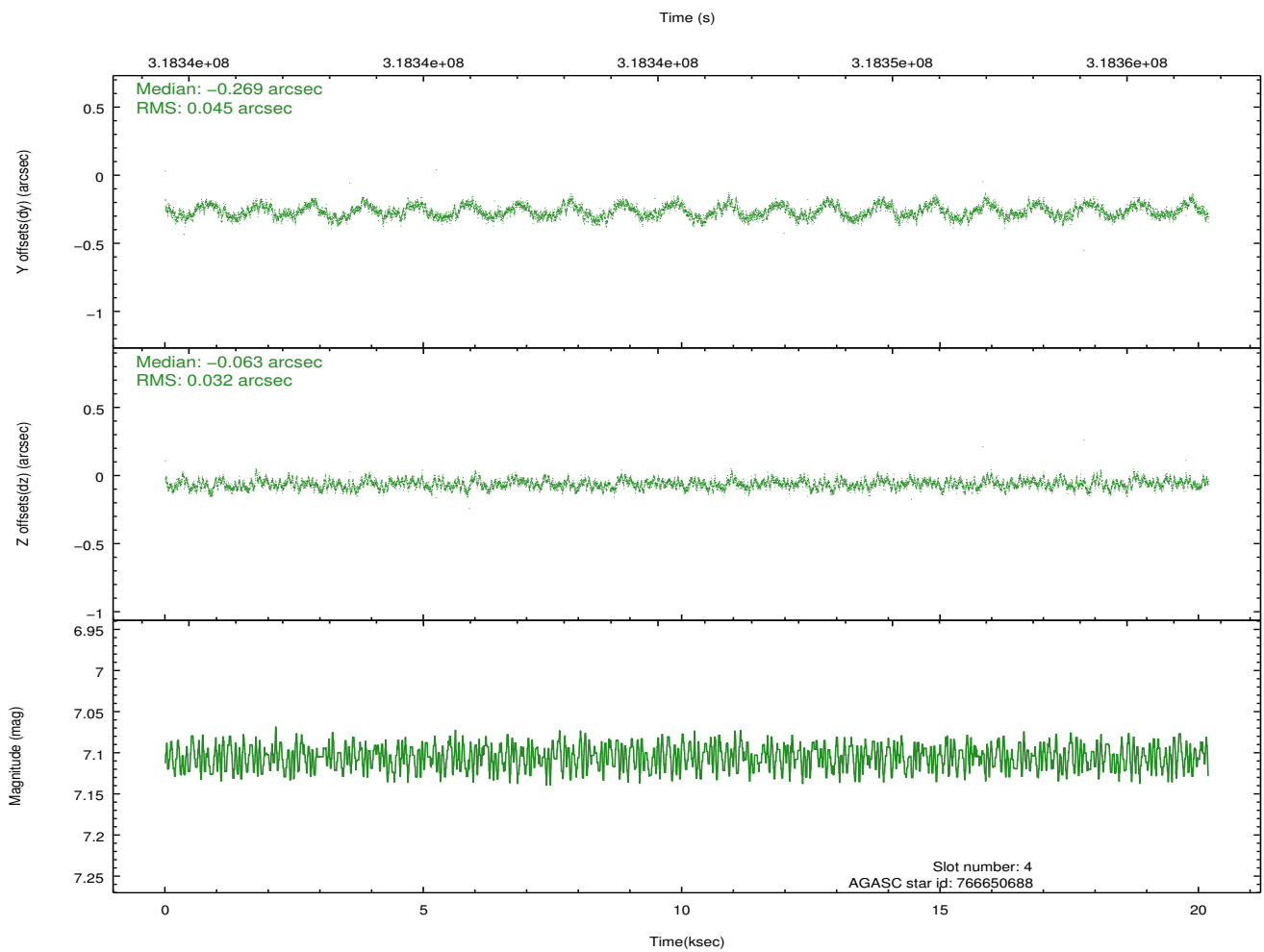
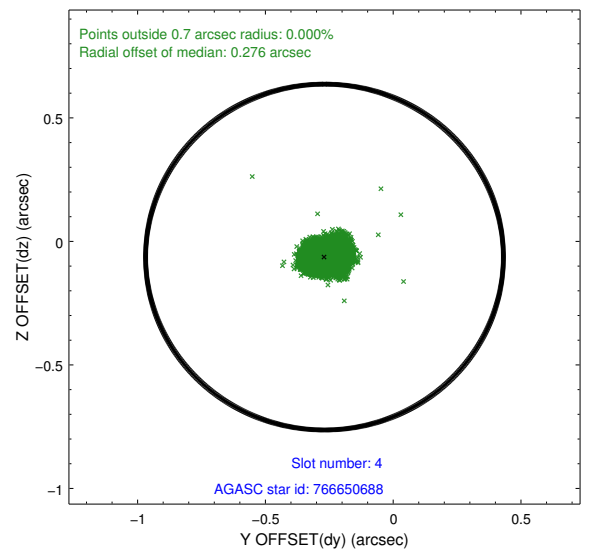
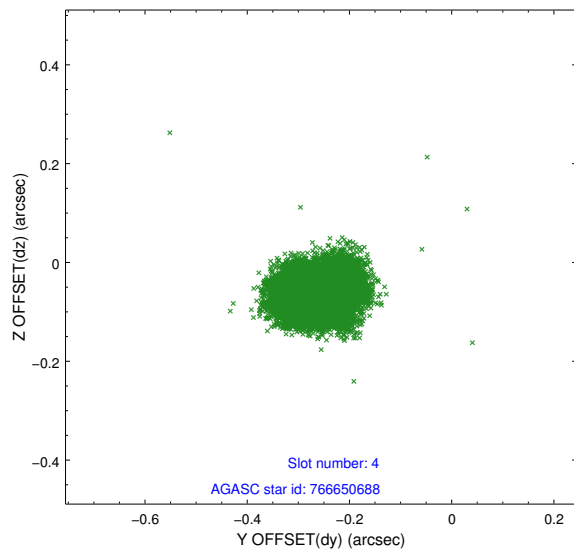
∞

2.4 Star Slots

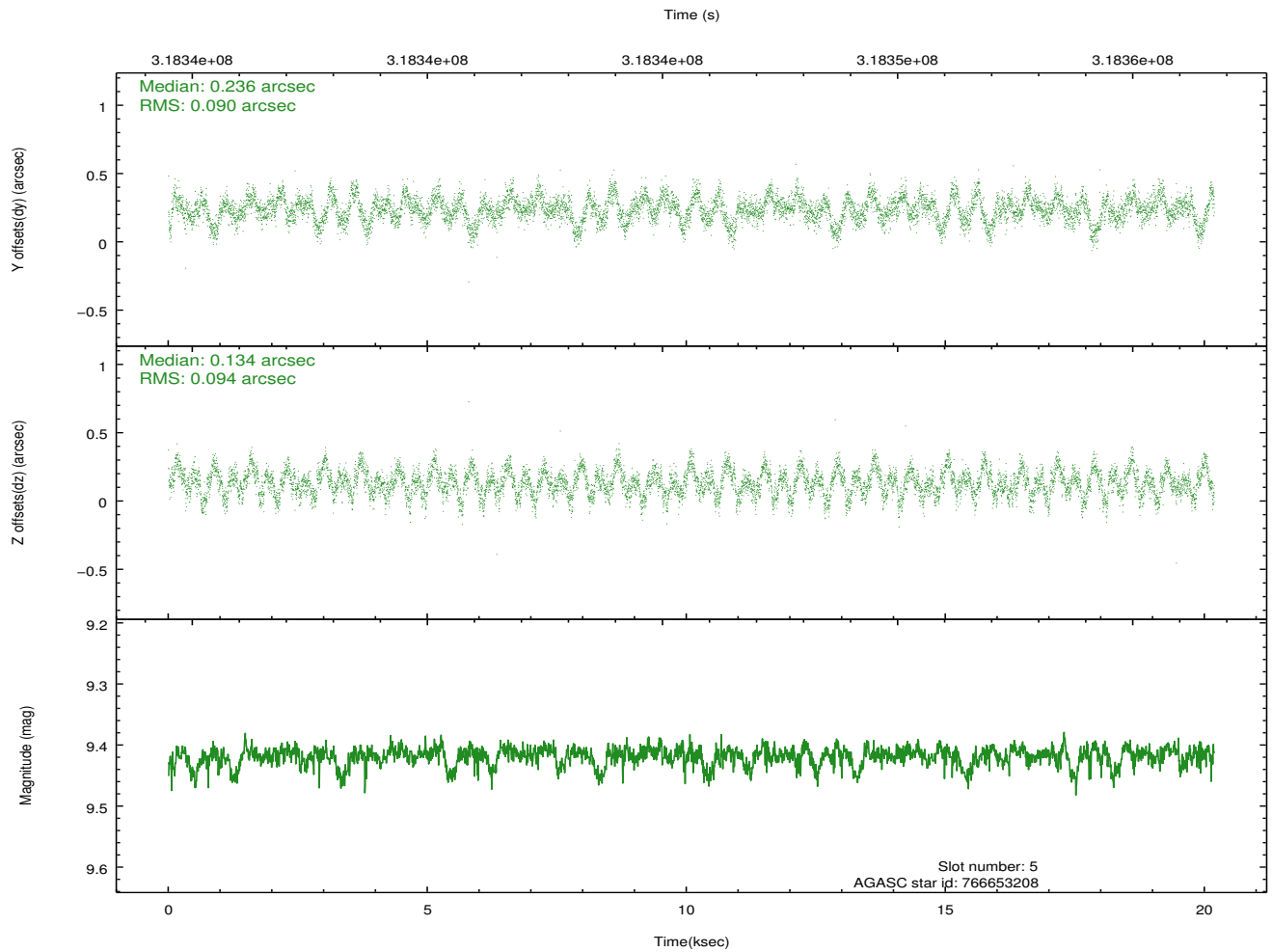
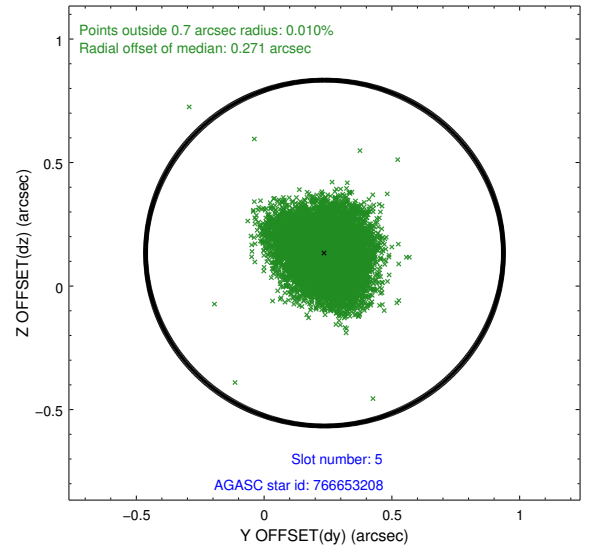
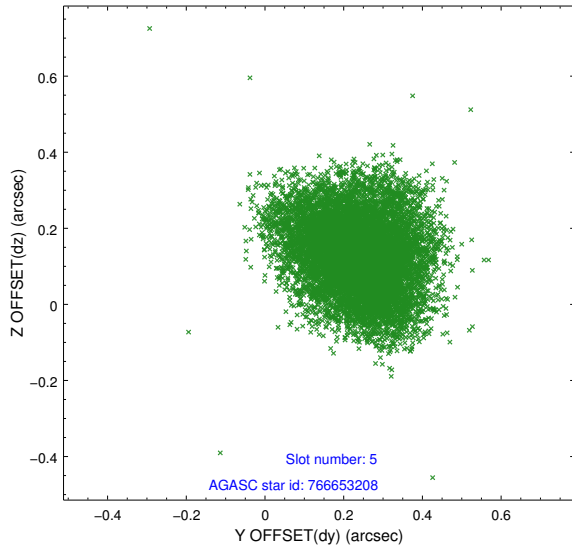
2.4.1 Slot 3



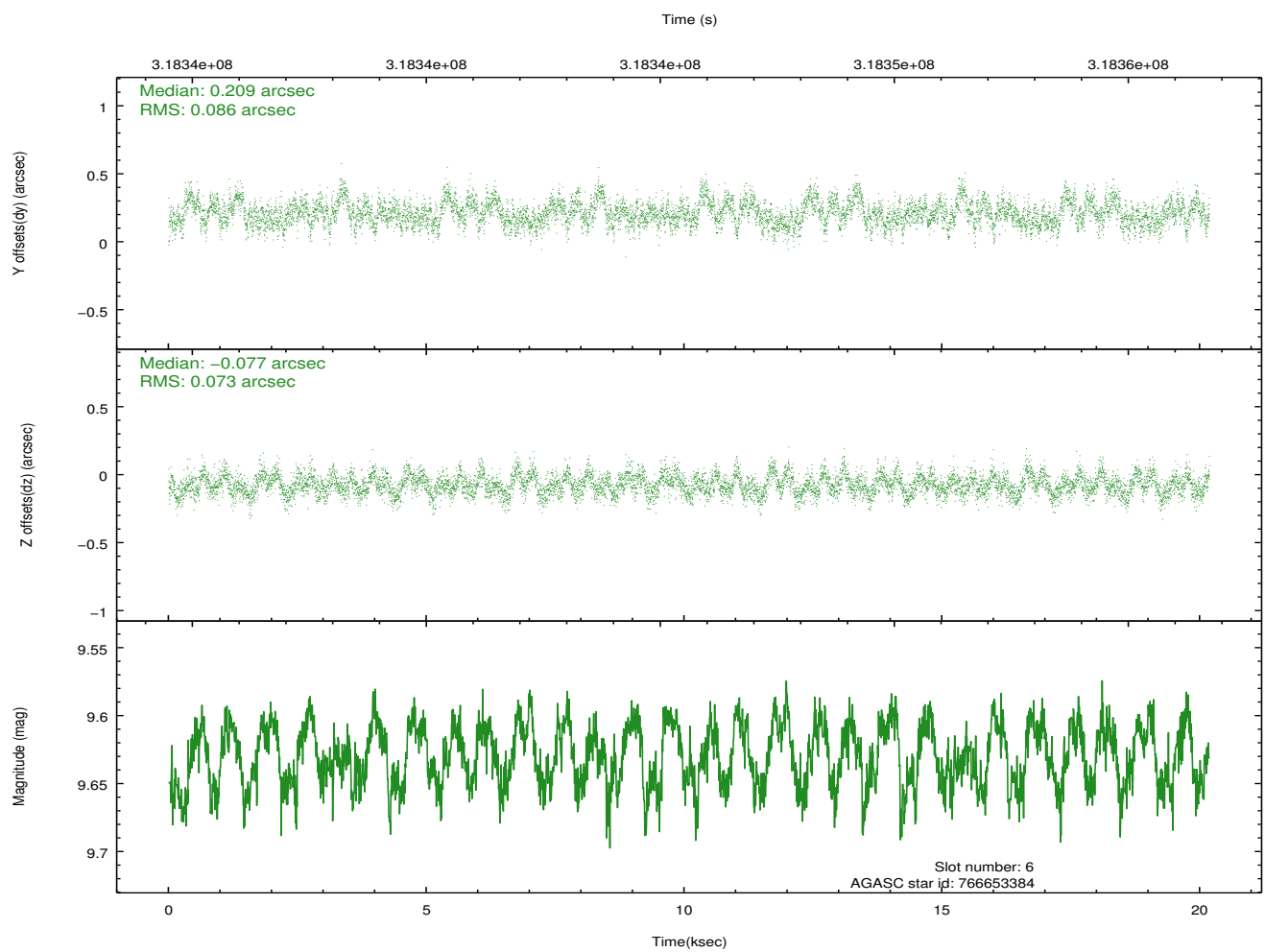
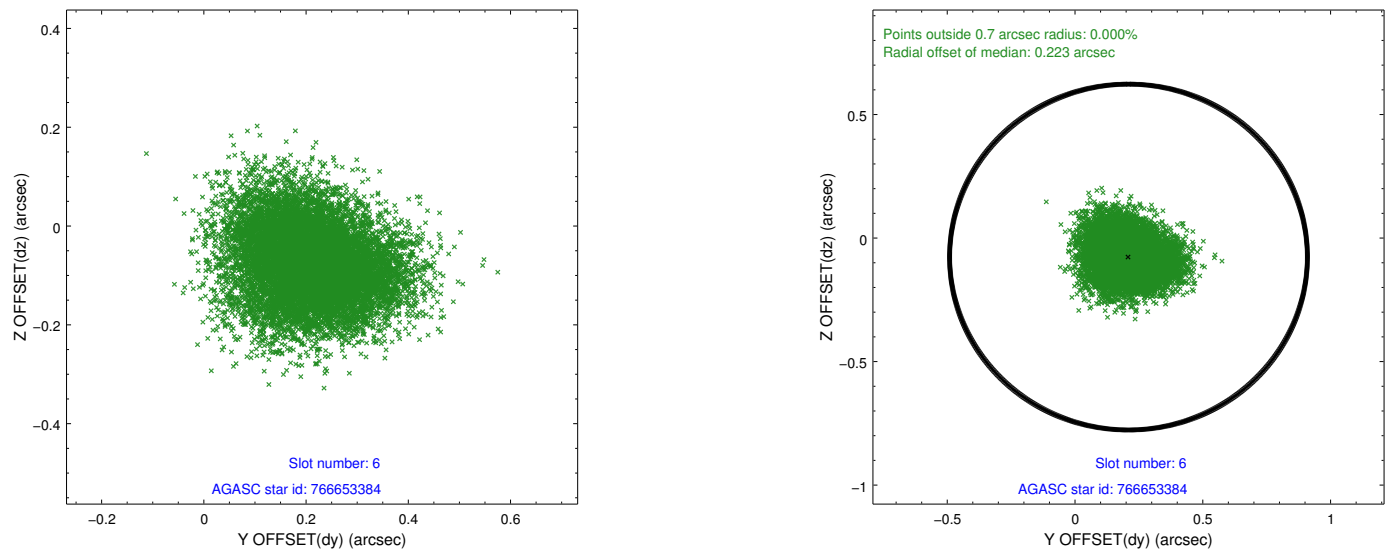
2.4.2 Slot 4



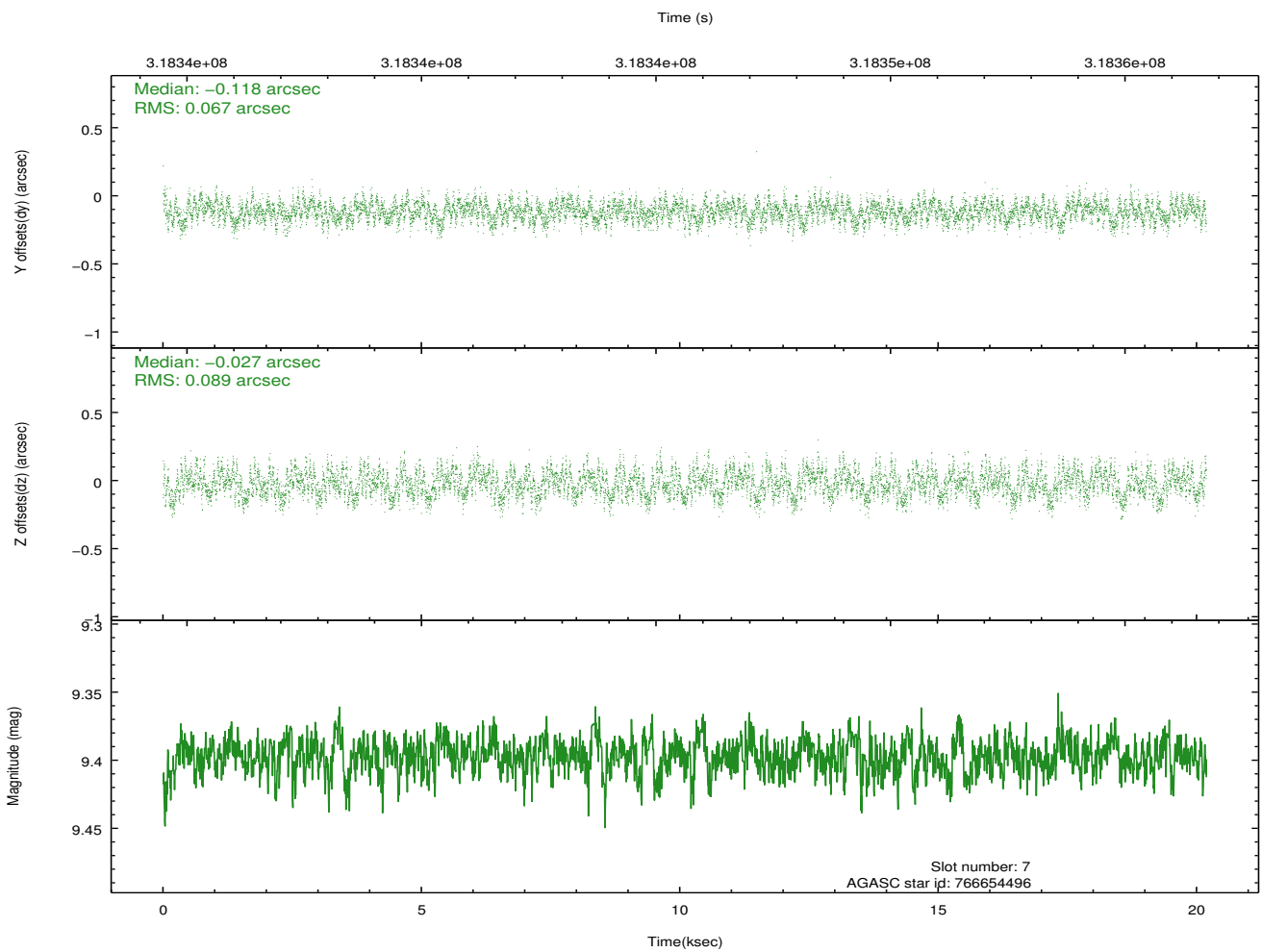
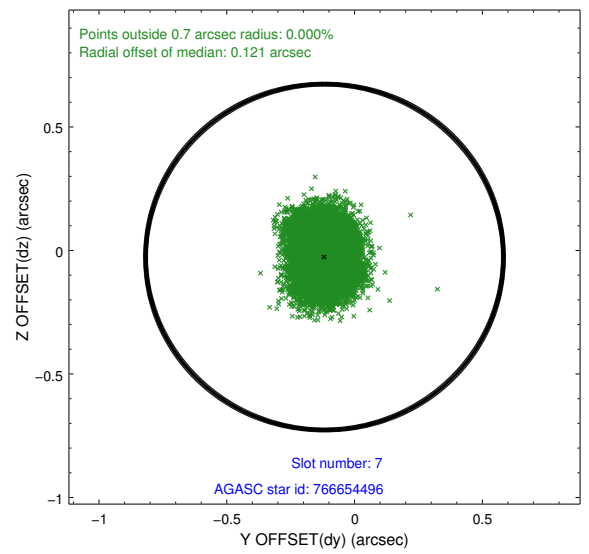
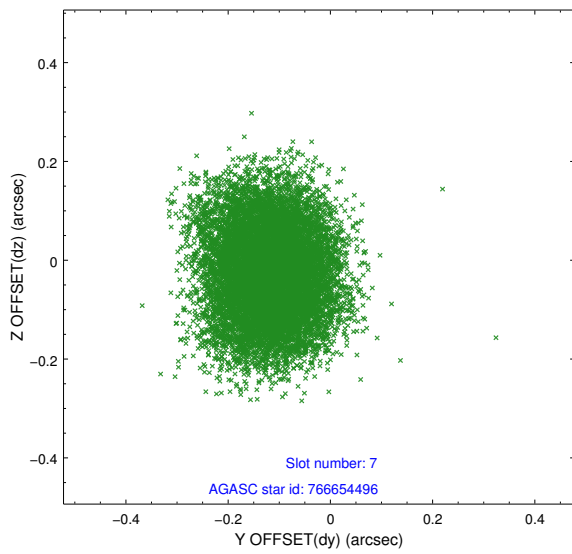
2.4.3 Slot 5



2.4.4 Slot 6

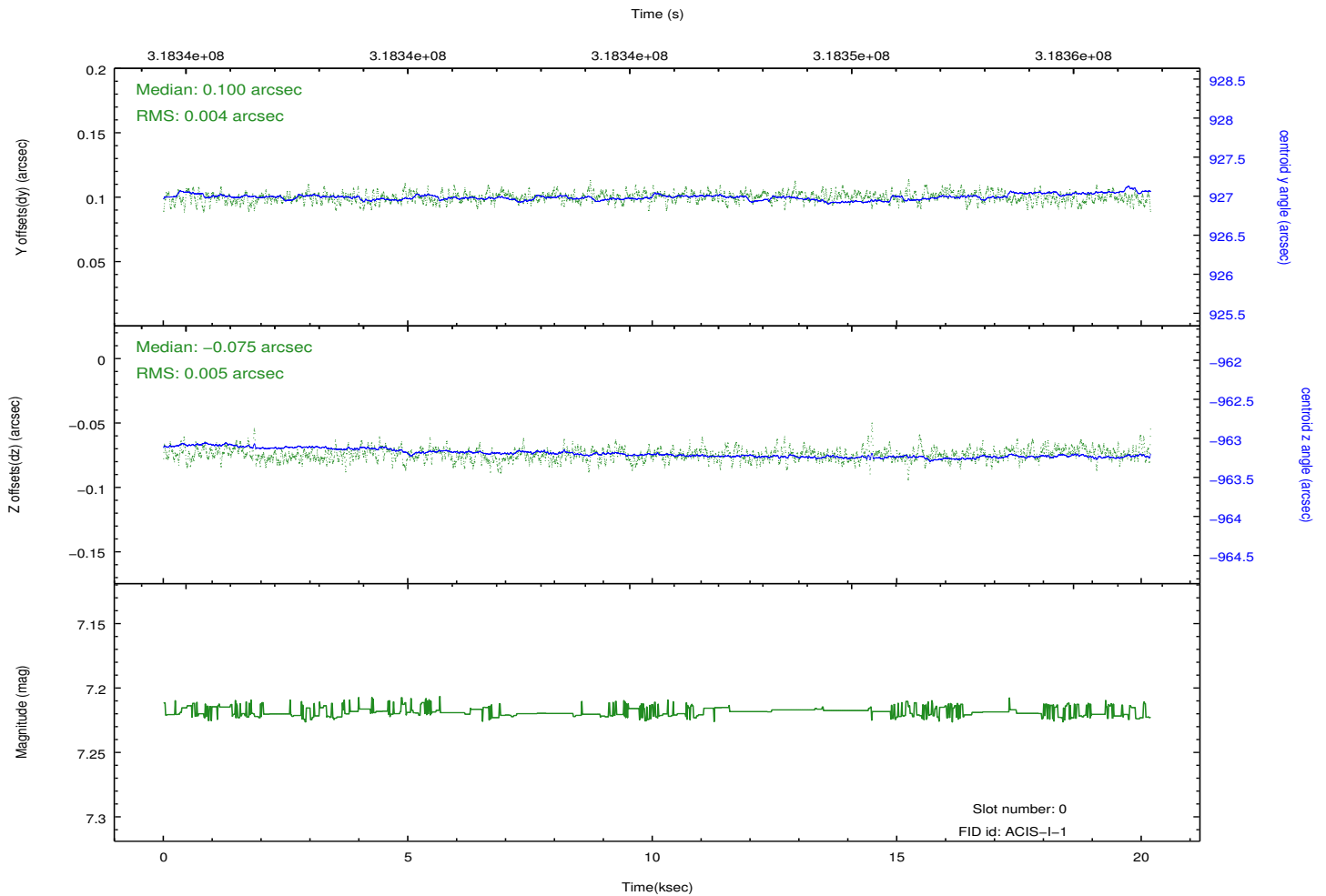
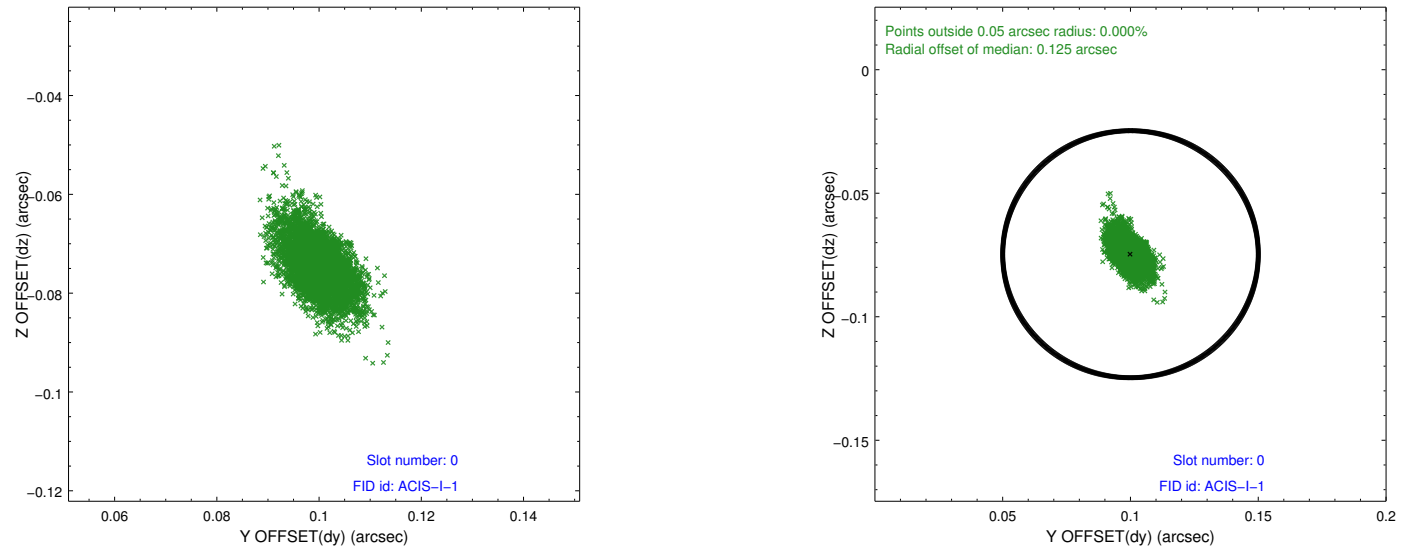


2.4.5 Slot 7

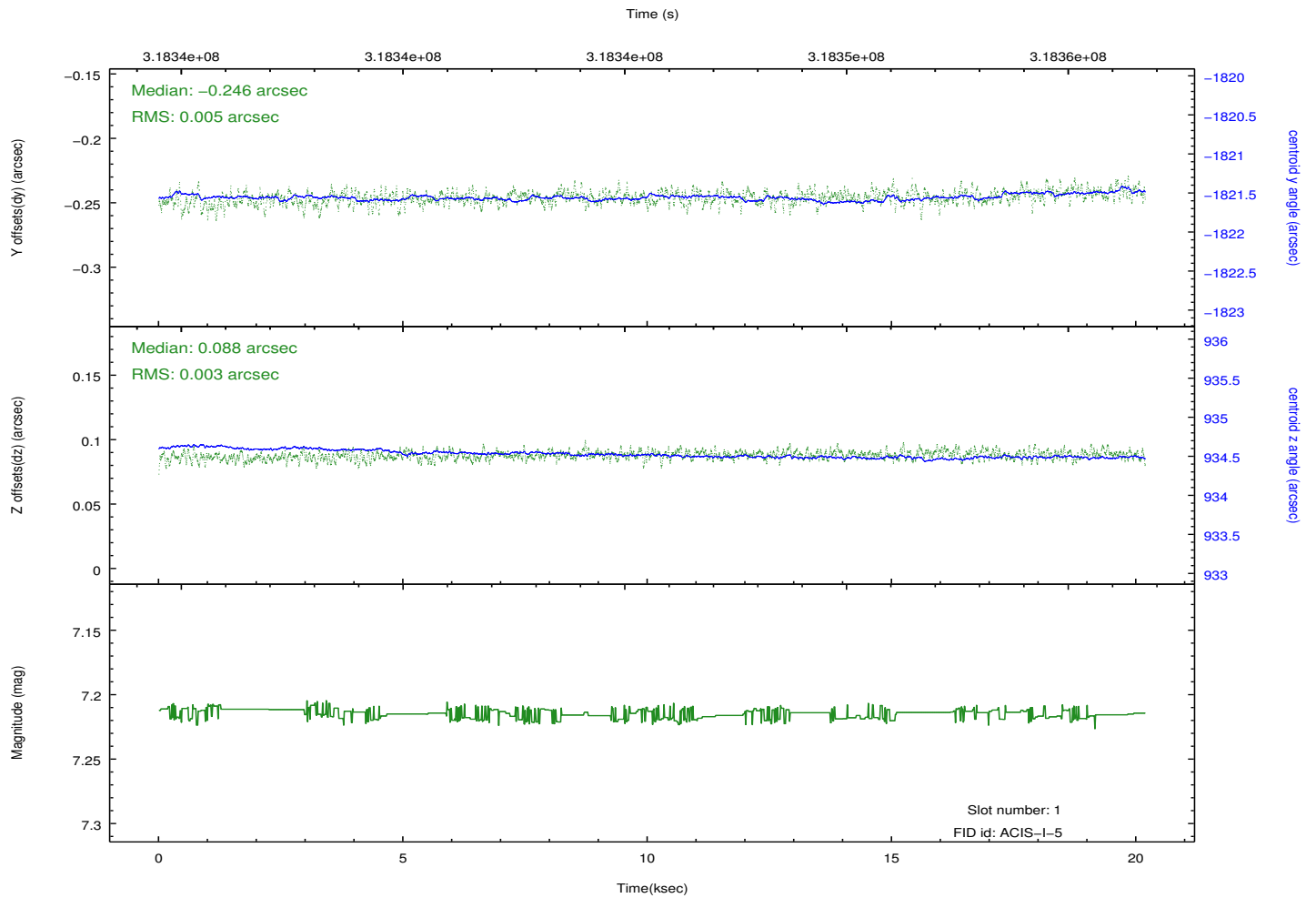
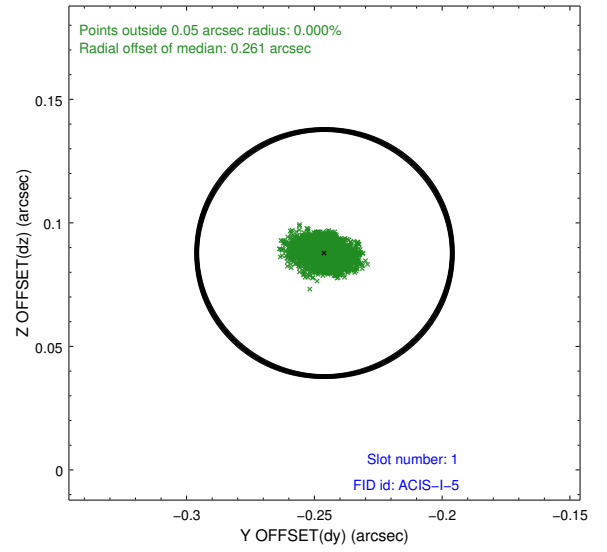
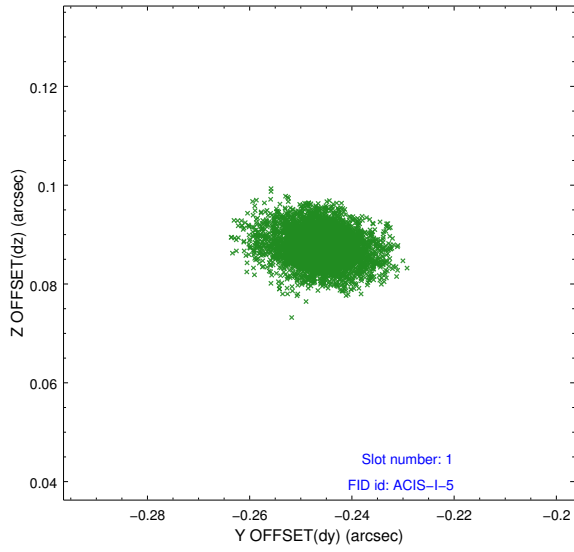


2.5 FID Slots

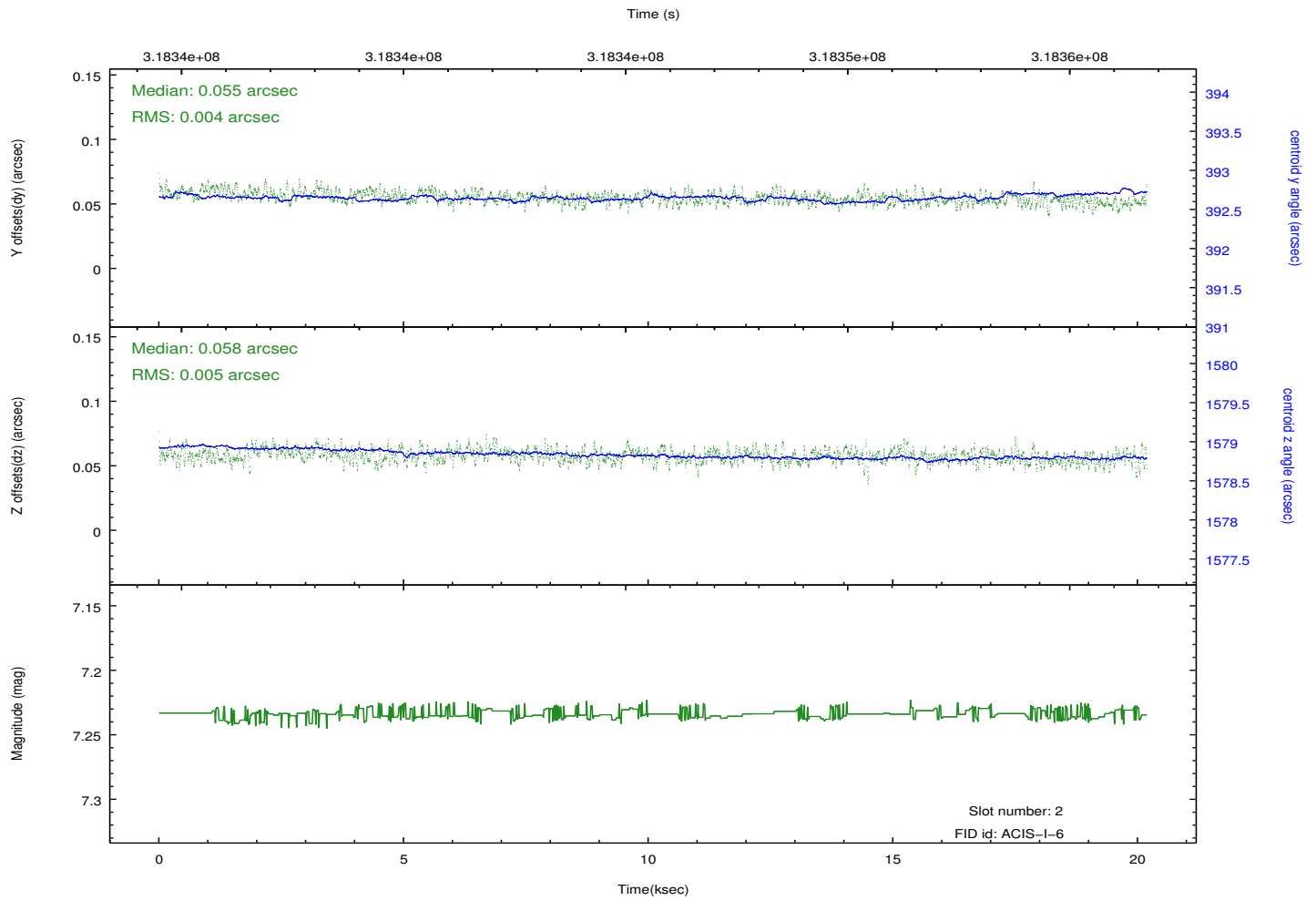
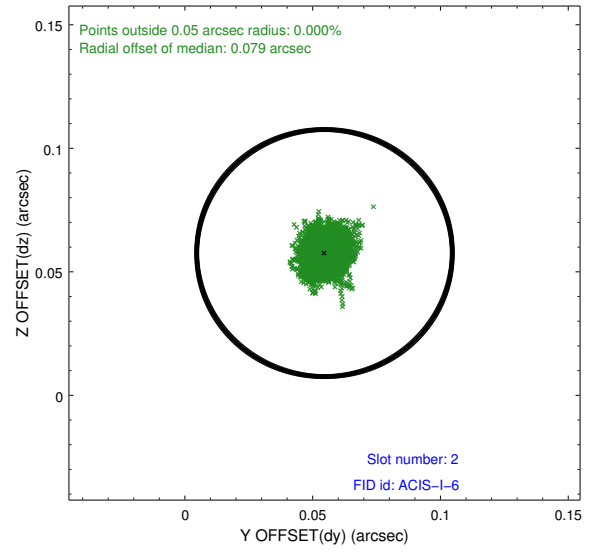
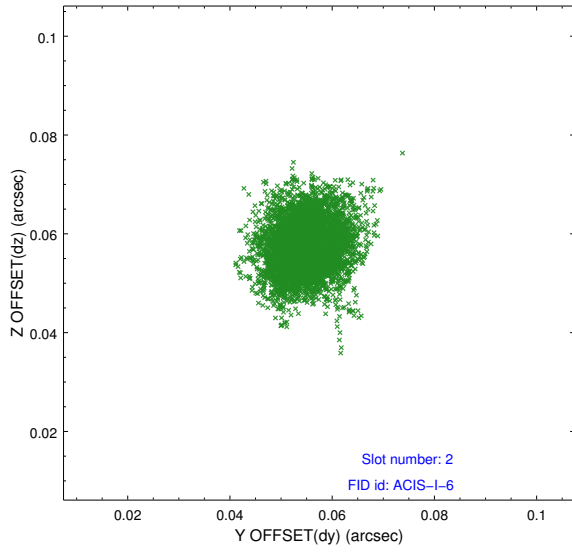
2.5.1 Slot 0



2.5.2 Slot 1



2.5.3 Slot 2



A Summary

A.1 Status

V&V Scientist	Beth Sundheim
V&V Date (YYYY-MM-DD)	2012.05.11
V&V Edition	1
V&V Disposition and Status	OK
V&V Charge Time	20.1779001

A.2 Comments