

V&V Reference Report

L2 ASCDS Version : 8.4.4

Observation 9499 - L2 Version 2
Chandra X-Ray Center

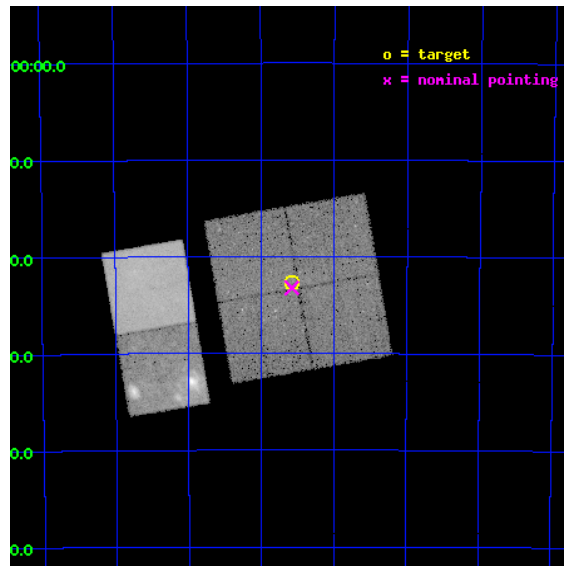
L2 Processing Date : May 15 2012

Contents

1	Front	2
2	OBI	3
2.1	OBI	3
2.1.1	Images	3
2.1.2	Bias	3
2.1.3	Parameters	4
2.1.4	Events	4
2.2	Compared Parameters	5
2.3	Aspect	6
2.4	Star Slots	9
2.4.1	Slot 3	9
2.4.2	Slot 4	10
2.4.3	Slot 5	11
2.4.4	Slot 6	12
2.4.5	Slot 7	13
2.5	FID Slots	14
2.5.1	Slot 0	14
2.5.2	Slot 1	15
2.5.3	Slot 2	16
A	Summary	17
A.1	Status	17
A.2	Comments	17

1 Front

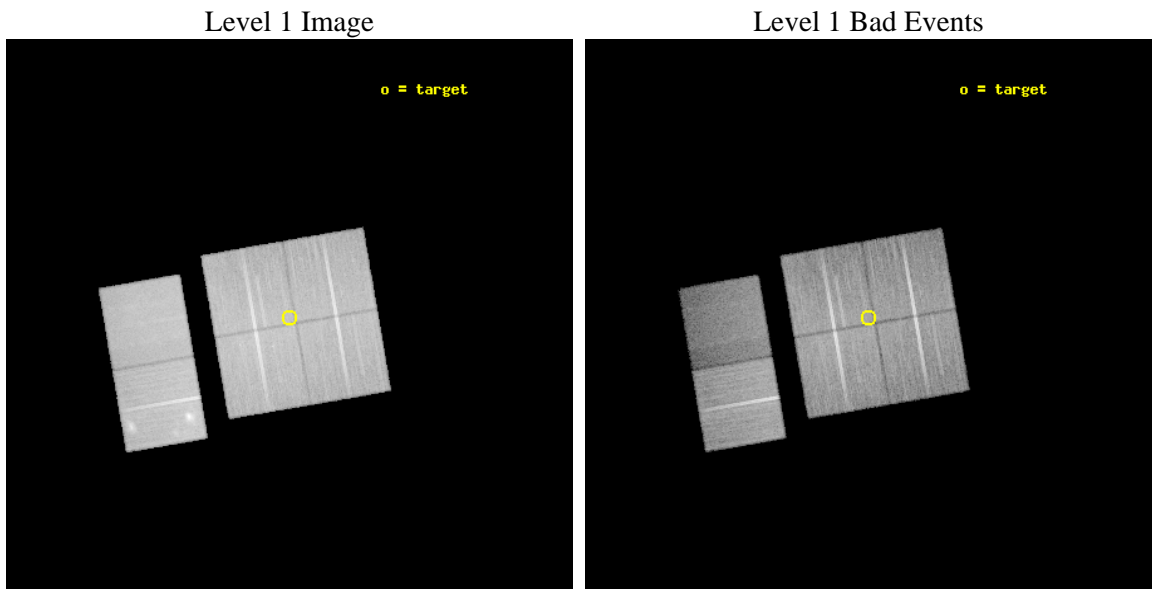
seq_num	900836	Sequence number
obs_id	9499	Observation id
title	The Great Nebula in Carina: Protoplanetary Disks to Starburst Galaxies	Proposal title
observer	Dr. Leisa Townsley	Principal investigator
object	Carina Superbubble Ptg 4	Source name
dtcycle	0	
cycle	P	events from which exps? Prim/Second/Both
ra_targ	160.642083	Observer's specified target RA [deg]
dec_targ	-59.379139	Observer's specified target Dec [deg]
ra_nom	160.64416788609	Nominal RA [deg]
dec_nom	-59.387148796469	Nominal Dec [deg]
roll_nom	260.21048226954	Nominal Roll [deg]
revision	2	Processing version of data
ontime	31845.707812548	Sum of GTIs [s]
livetime	31442.458285042	Livetime [s]
ontime0	31852.066643178	Sum of GTIs [s]
ontime1	31852.107683182	Sum of GTIs [s]
ontime2	31848.90772295	Sum of GTIs [s]
ontime3	31845.707812548	Sum of GTIs [s]
ontime6	31852.271843195	Sum of GTIs [s]
ontime7	31852.230803192	Sum of GTIs [s]
l2events	253853	Number of level 2 events



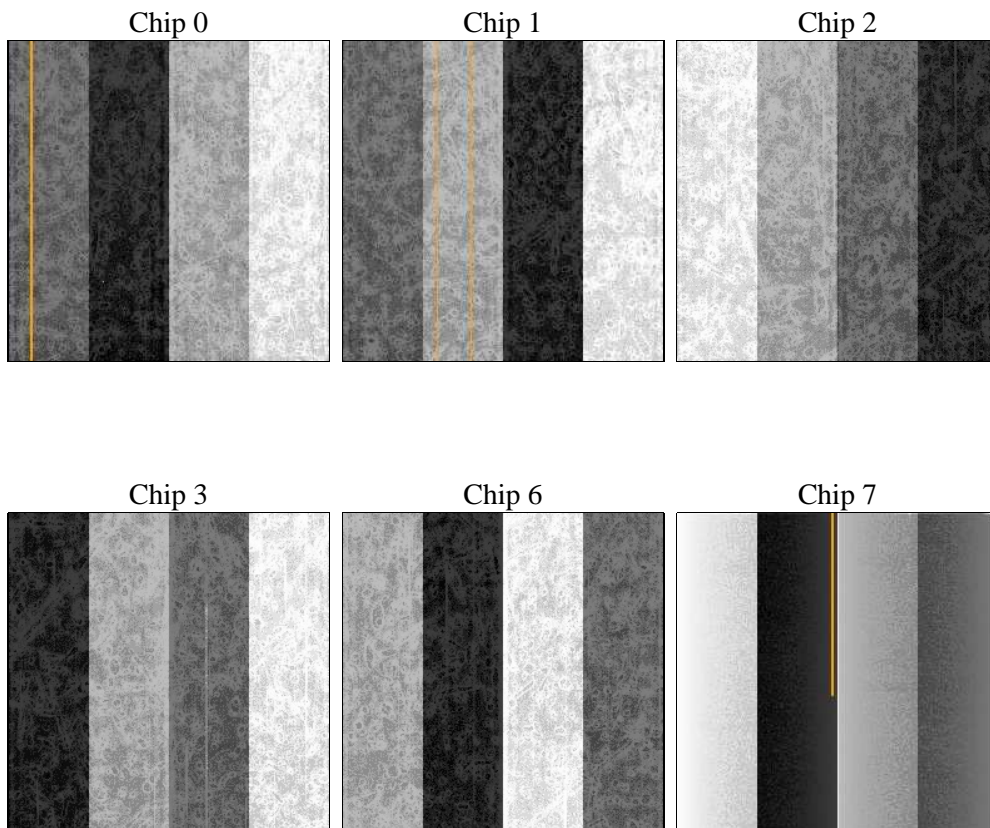
2 OBI

2.1 OBI

2.1.1 Images



2.1.2 Bias



2.1.3 Parameters

obi_num	0	Obi number	sched_exp_time	31798.902000	[s] Scheduled observation exposure time
ascdsver	8.4.4	Processing system revision	ontime	31845.707812548	Sum of GTIs [s]
caldbver	4.4.9	 	ontime0	31852.066643178	Sum of GTIs [s]
date	2012-05-15T16:42:21	Date and time of file creation	ontime1	31852.107683182	Sum of GTIs [s]
revision	2	Processing version of data	ontime2	31848.90772295	Sum of GTIs [s]
			ontime3	31845.707812548	Sum of GTIs [s]
			ontime6	31852.271843195	Sum of GTIs [s]
			ontime7	31852.230803192	Sum of GTIs [s]
			l1events	1427581	Number of level 1 events

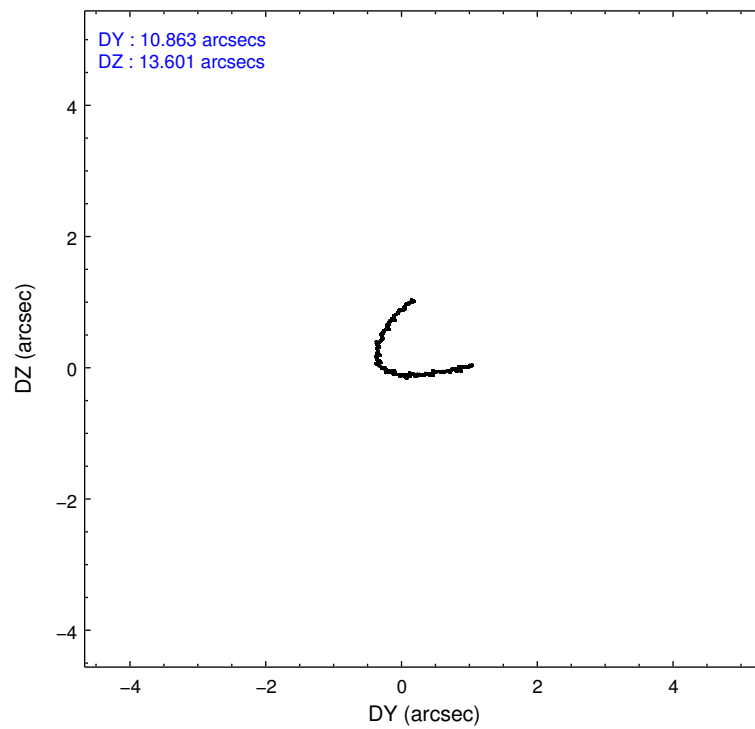
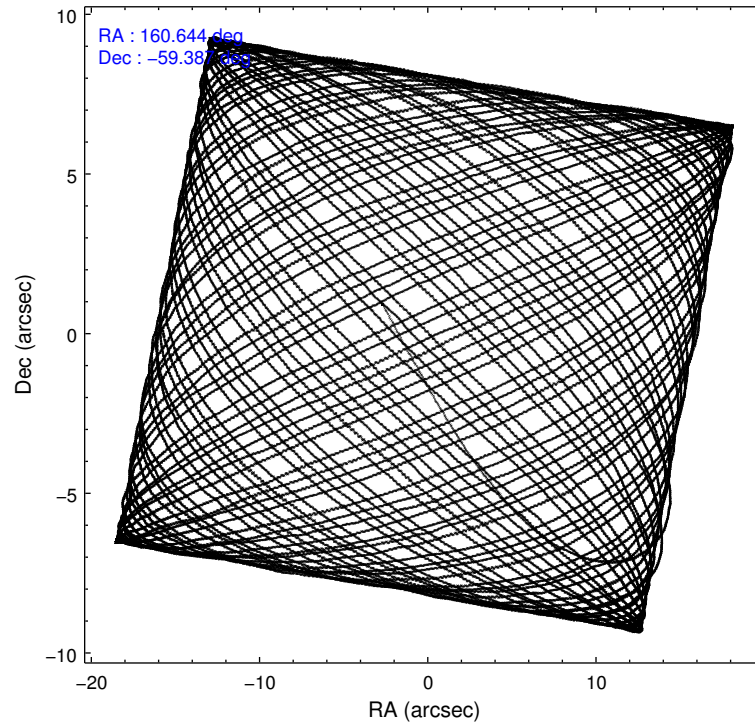
2.1.4 Events

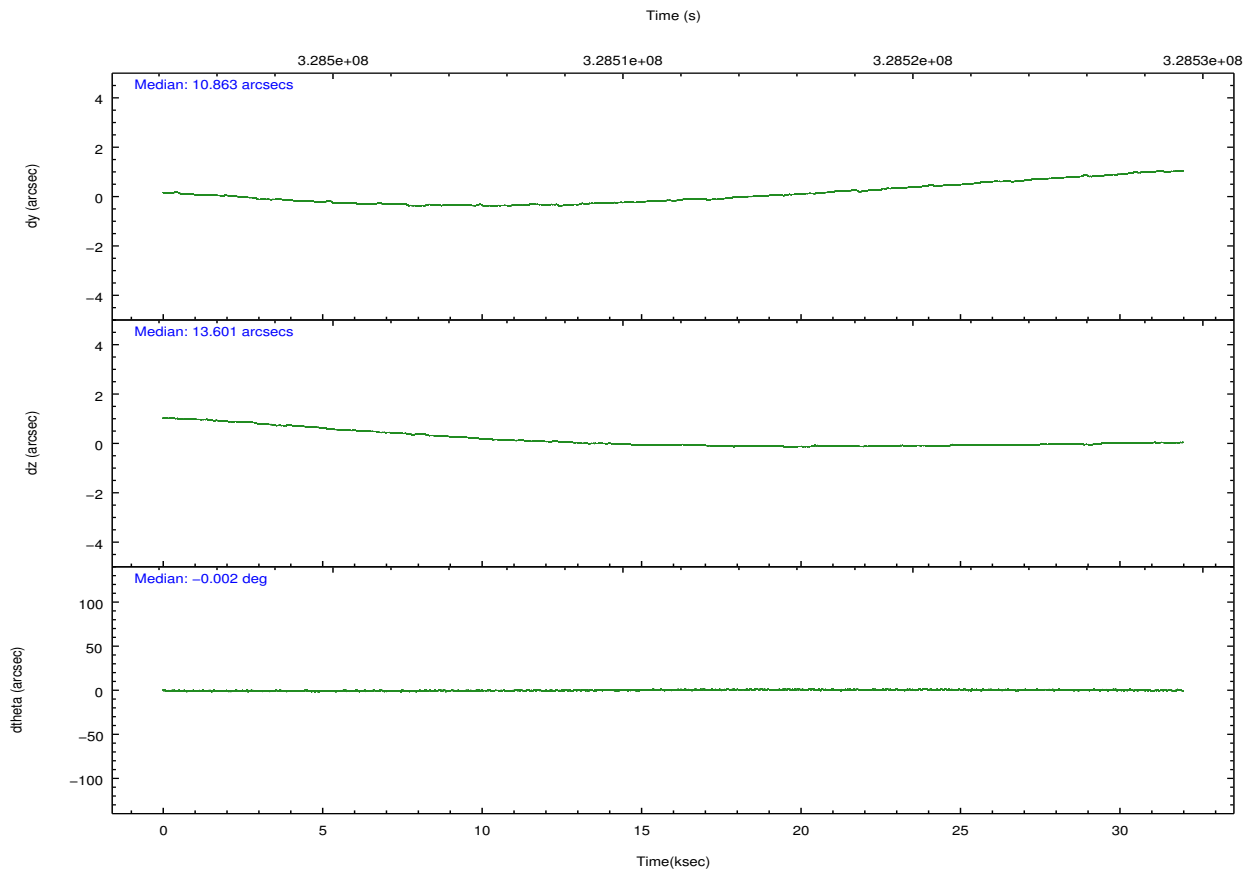
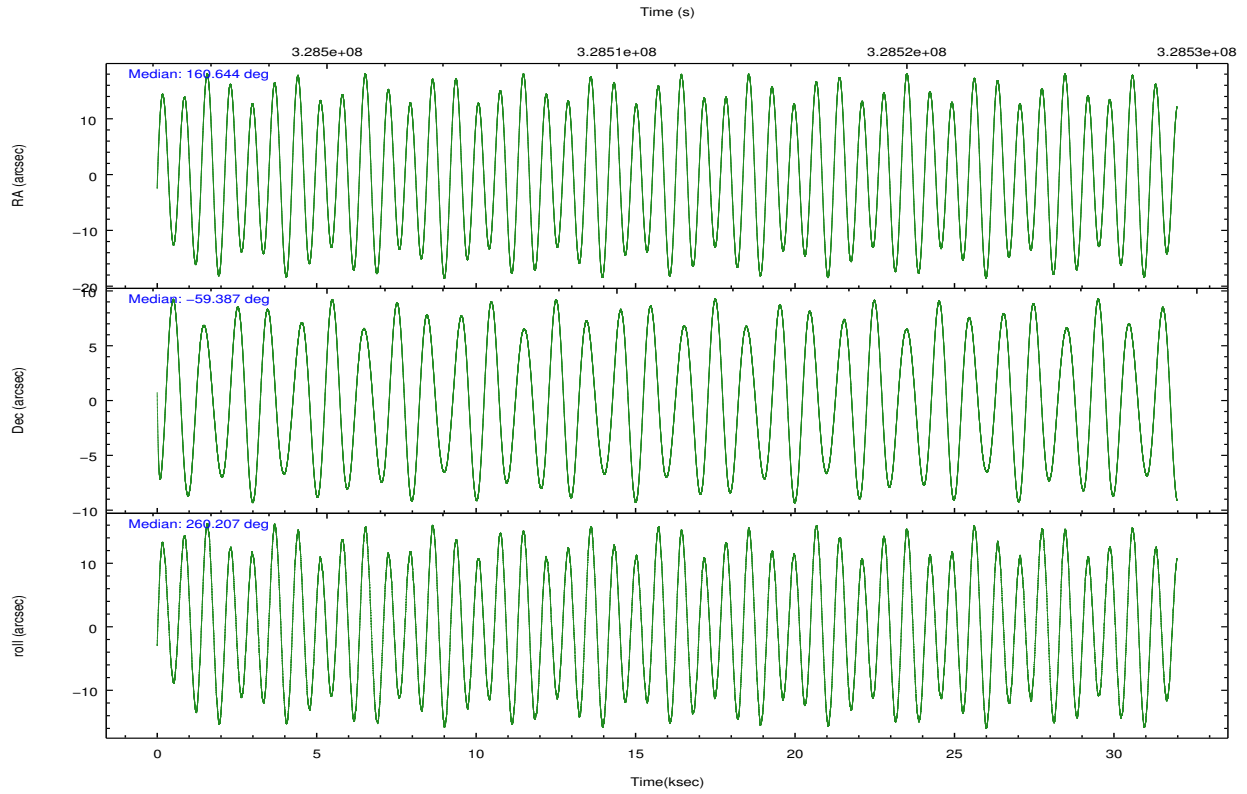
	ccd 0	ccd 1	ccd 2	ccd 3	ccd 6	ccd 7		ccd 0	ccd 1	ccd 2	ccd 3	ccd 6	ccd 7
level 1 events	217955	211062	249553	232024	280625	236362	grade 0 events	9683	9486	10991	9809	36927	14782
rejected events	193206	185941	224143	208010	222920	113719		4%	4%	4%	4%	13%	6%
rejected %	88%	88%	89%	89%	79%	48%	grade 1 events	128	107	162	139	265	344
								0%	0%	0%	0%	0%	0%
							grade 2 events	5752	5392	5670	5087	8567	26583
								2%	2%	2%	2%	3%	11%
							grade 3 events	2610	2779	2438	2486	3381	11990
								1%	1%	0%	1%	1%	5%
							grade 4 events	2406	2618	2427	2398	3338	11689
								1%	1%	0%	1%	1%	4%
							grade 5 events	6695	7635	6354	8127	8382	24205
								3%	3%	2%	3%	2%	10%
							grade 6 events	4299	4849	3886	4239	5497	57615
								1%	2%	1%	1%	1%	24%
							grade 7 events	186382	178196	217625	199739	214268	89154
								85%	84%	87%	86%	76%	37%

2.2 Compared Parameters

Parameter	Planned	Actual	Parameter	Planned	Actual
Instrument	ACIS	ACIS	Obspar format version number	7	7
Detector	ACIS-012367	ACIS-012367	Obspar file type	PREDICTED	ACTUAL
Grating	NONE	NONE	Obspar update status	NONE	UPDATED
Data mode	VFAINT	VFAINT	CCD I0 on	Y	Y
Observation mode	POINTING	POINTING	CCD I1 on	Y	Y
[deg] Pointing RA	160.625320	160.6441678860932	CCD I2 on	Y	Y
[deg] Pointing Dec	-59.361383	-59.38714879646894	CCD I3 on	Y	Y
[deg] Pointing Roll	259.985580	260.2104822695405	CCD S0 on	N	N
[mm] SIM focus pos	-0.782348	-0.7809083437167272	CCD S1 on	N	N
[mm] SIM defocus	0	0.001439871863259334	CCD S2 on	O1	Y
[mm] SIM translation stage pos	-233.592463	-233.5874344608287	CCD S3 on	O2	Y
[mm] SIM translation stage offset	0	-0.005018542100998502	CCD S4 on	N	N
[s] Observation start time (MET)	328495921.184000	328494909.74556	CCD S5 on	N	N
Observation start date	2008-05-30T00:50:56	2008-05-30T00:35:09	Number of optional ACIS chips dropped	0	0
[s] Observation end time (MET)	328527720.184000	328527949.59717	On-chip summing requested	N	N
Observation end date	2008-05-30T09:40:55	2008-05-30T09:45:49	Subarray requested	NONE	NONE
Read mode	TIMED	TIMED	Alternating exposures requested	N	N
			[s] Primary exposure time	0.000000	3.2

2.3 Aspect



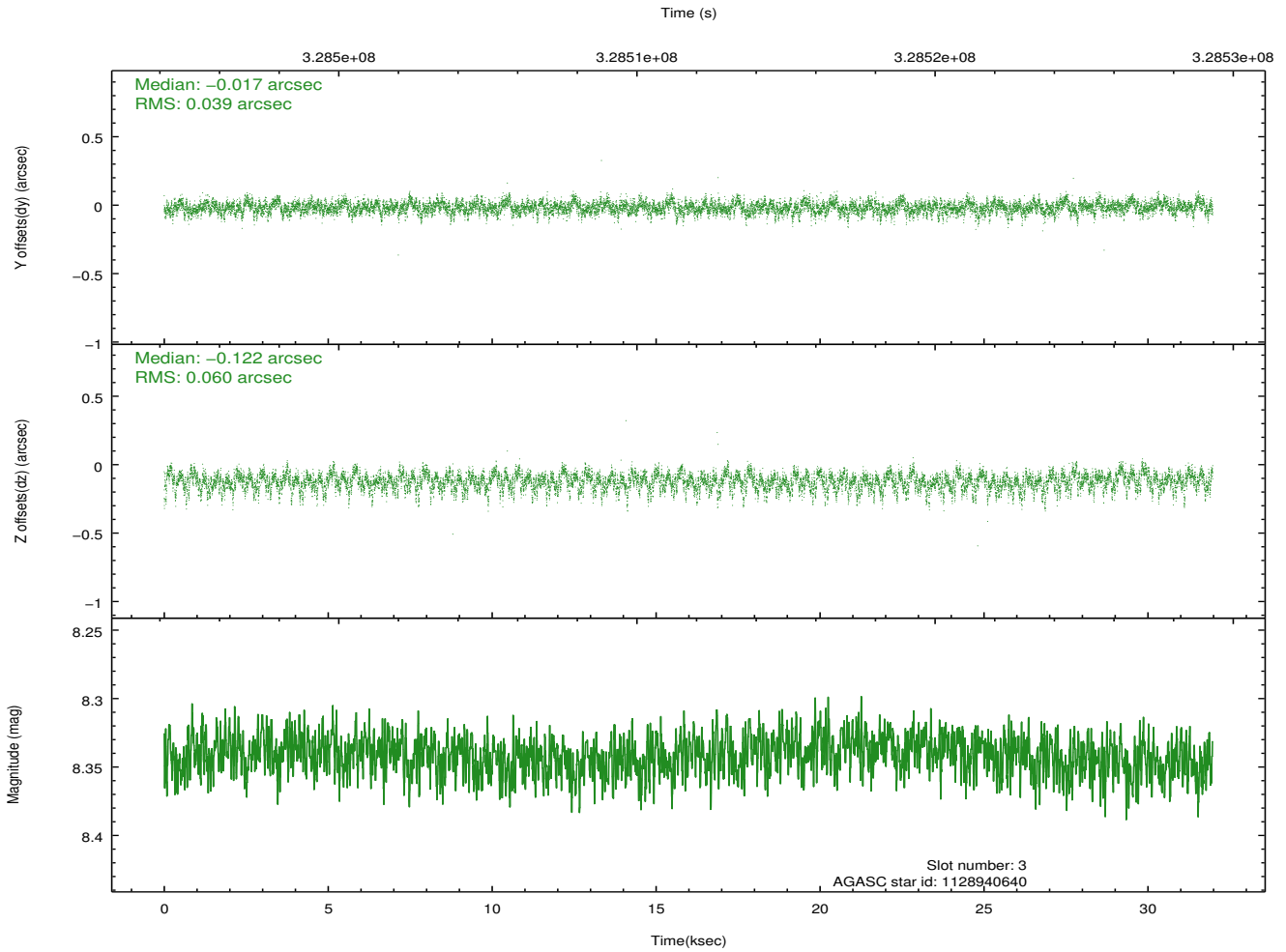
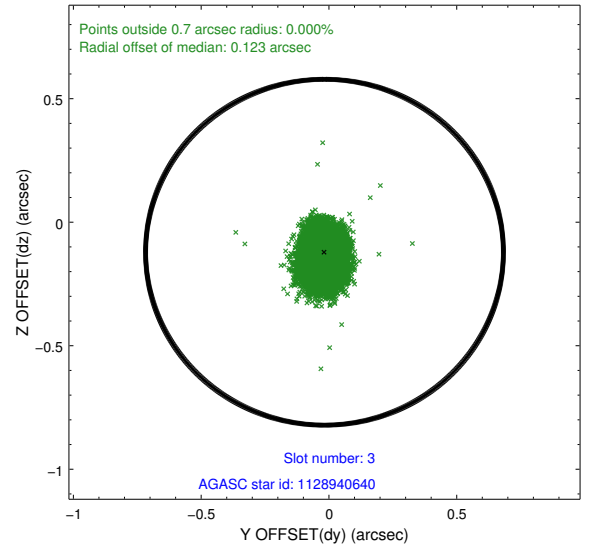
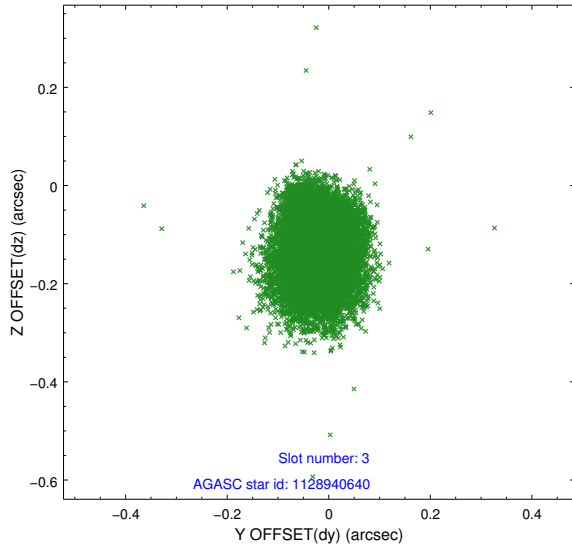


Slot Statistics

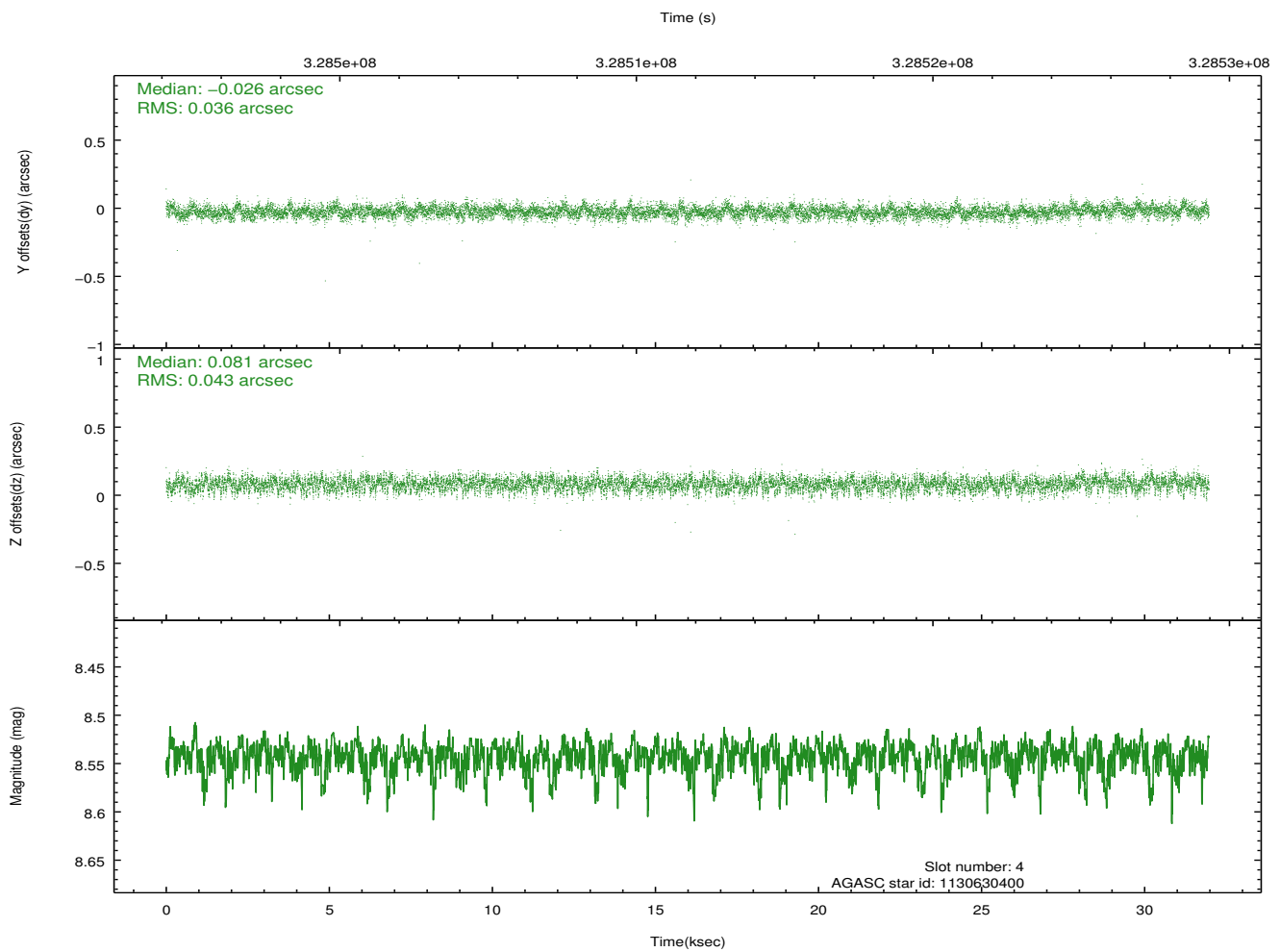
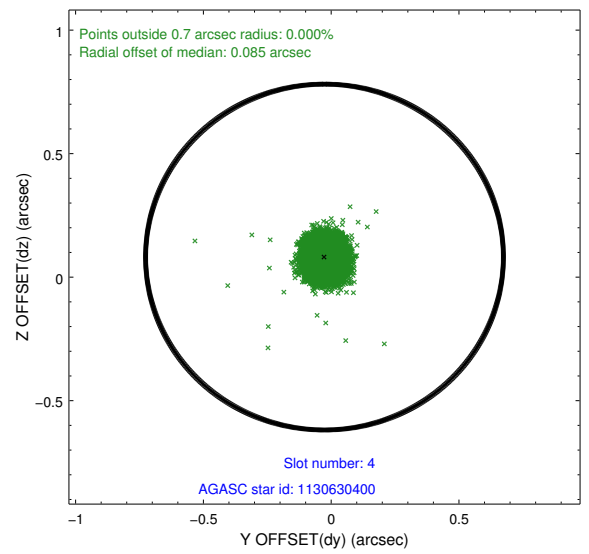
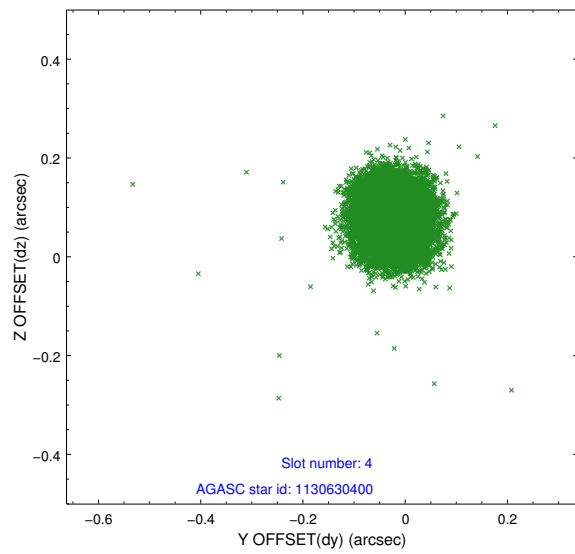
slot	status	id	mag	n_pts	med_dy	med_dz	dr1	dr2	ra	dec	mean_y	mean_z
0	FID	ACIS-I-1	7.01	7800	0.014	0.036	0.011	0.017	0.000000	0.000000	928.62	-837.30
1	FID	ACIS-I-5	7.00	7800	-0.172	0.037	0.012	0.026	0.000000	0.000000	-1819.65	1060.14
2	FID	ACIS-I-6	7.01	7798	0.067	-0.002	0.012	0.019	0.000000	0.000000	394.13	1704.69
3	GUIDE	1128940640	8.34	15594	-0.017	-0.122	0.074	0.129	159.517239	-59.074495	-643.42	-2195.43
4	GUIDE	1130630400	8.54	15593	-0.026	0.081	0.059	0.095	160.235909	-58.888840	-1546.98	-1008.95
5	GUIDE	1130632200	7.53	15599	-0.004	0.007	0.067	0.104	161.433843	-59.407820	-83.99	1489.42
6	GUIDE	1130643264	6.66	15599	0.054	0.023	0.067	0.115	160.322990	-59.676912	1215.76	-343.07
7	GUIDE	1174033144	8.74	15584	-0.014	0.013	0.079	0.126	161.168741	-60.059230	2308.44	1399.42

2.4 Star Slots

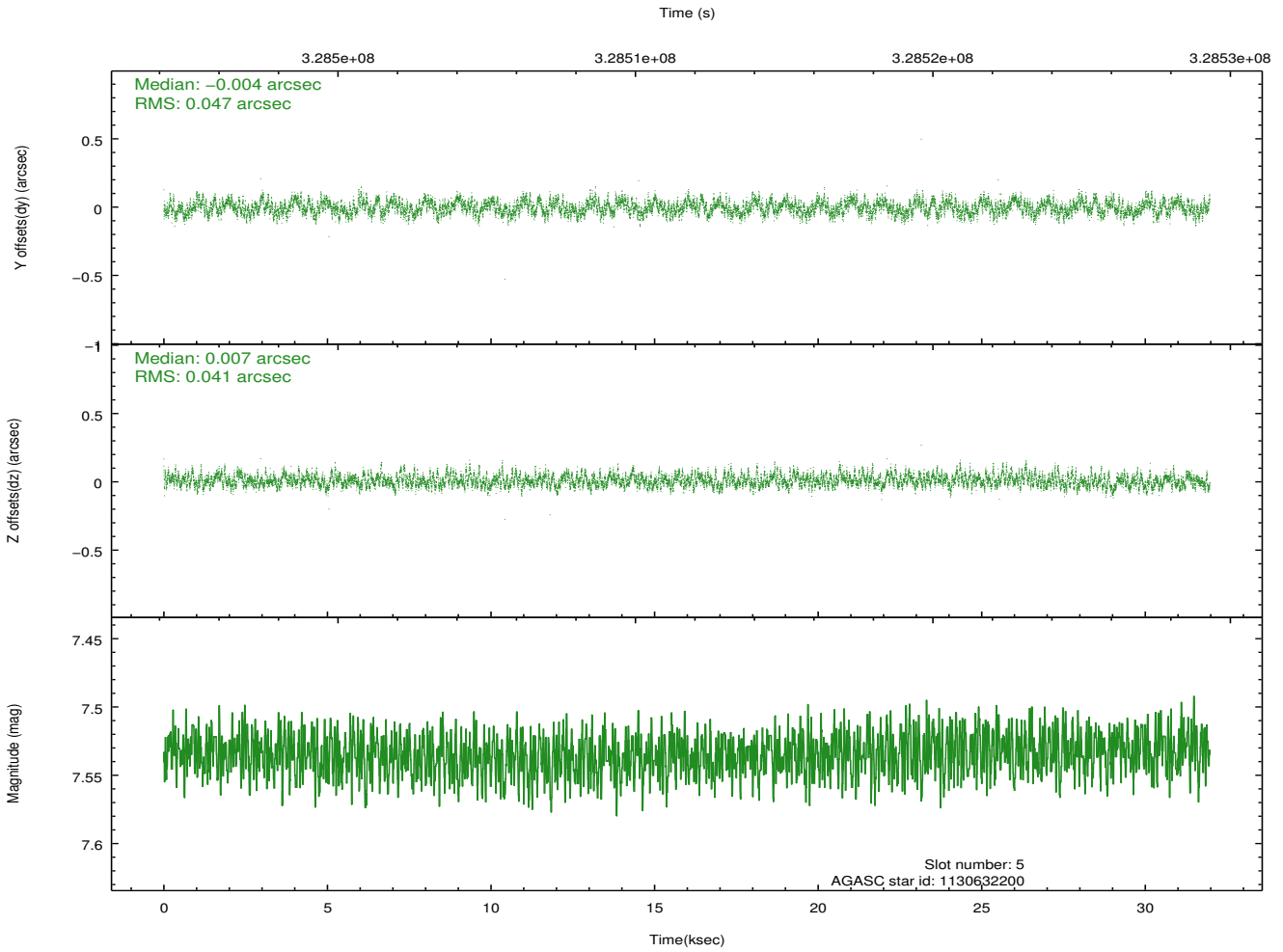
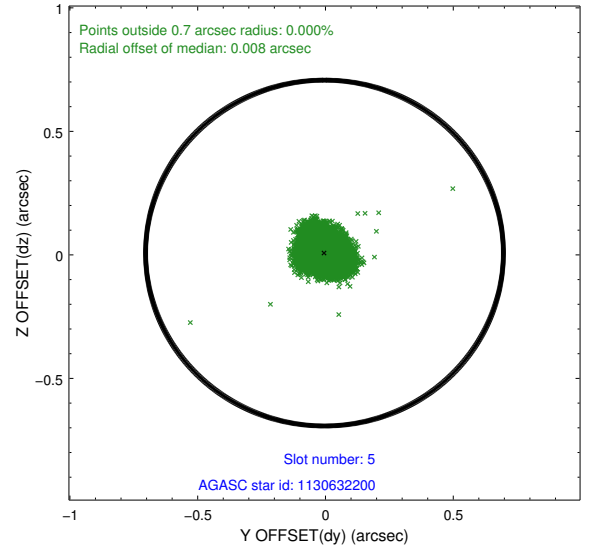
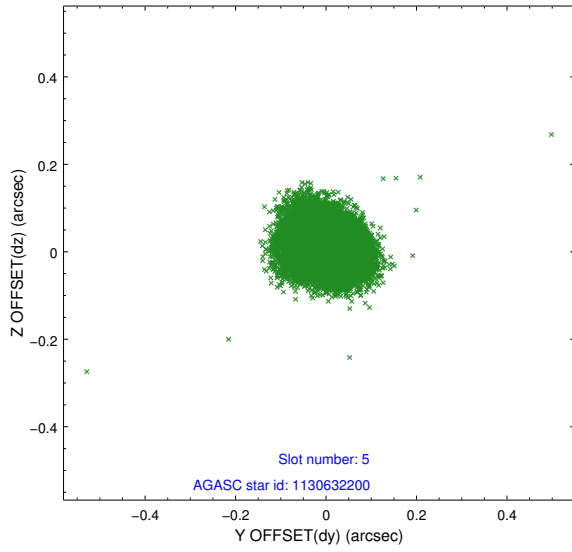
2.4.1 Slot 3



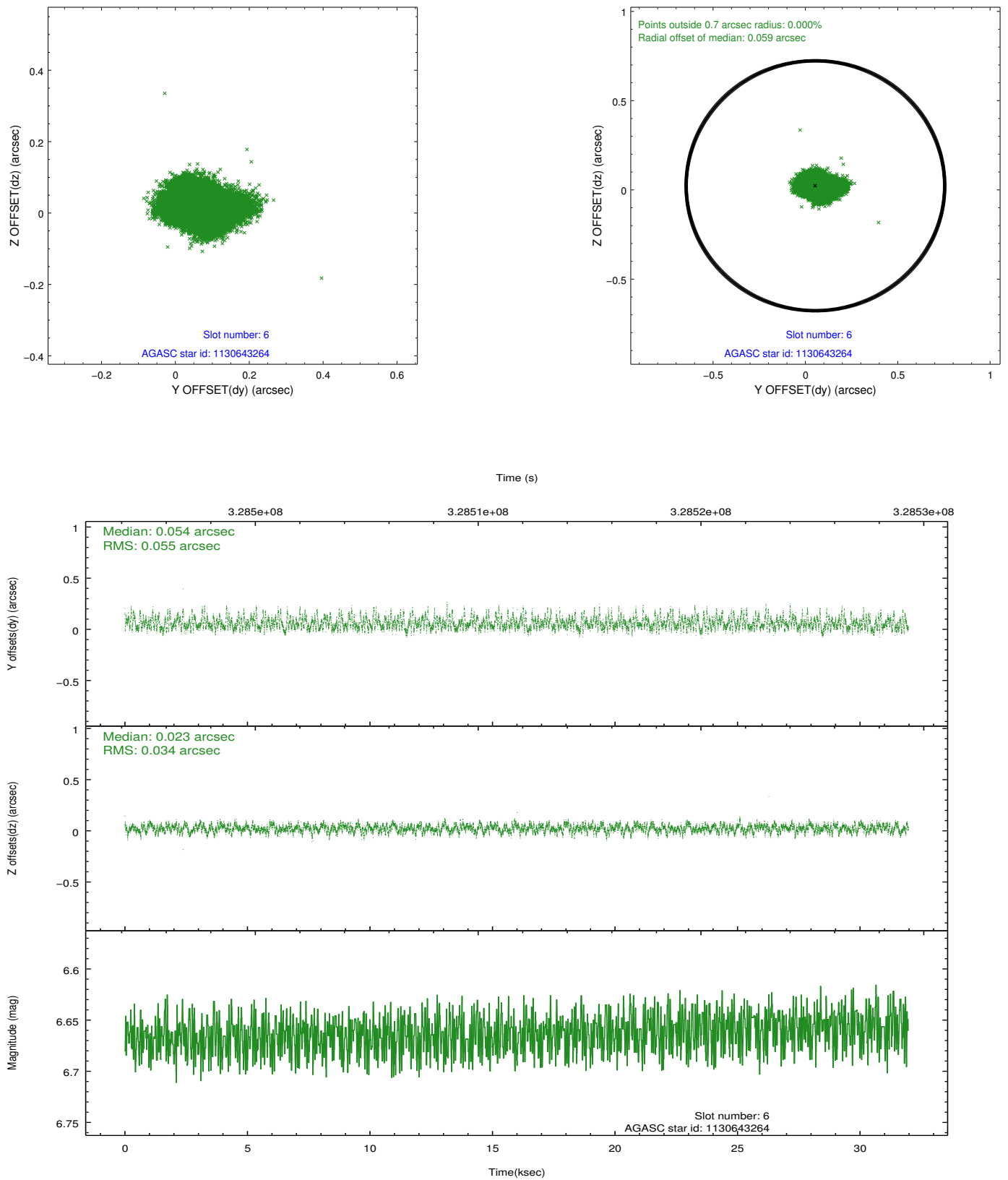
2.4.2 Slot 4



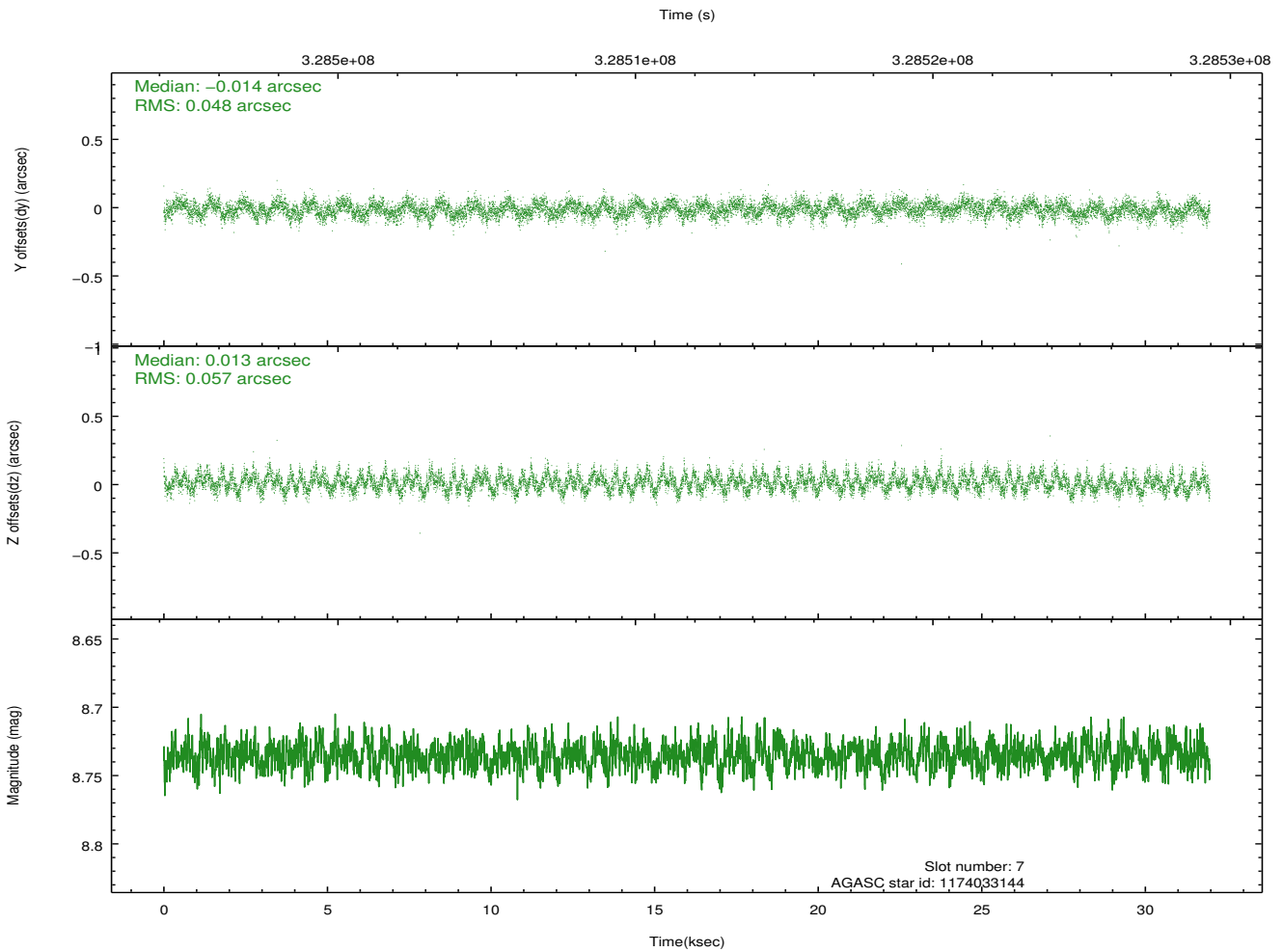
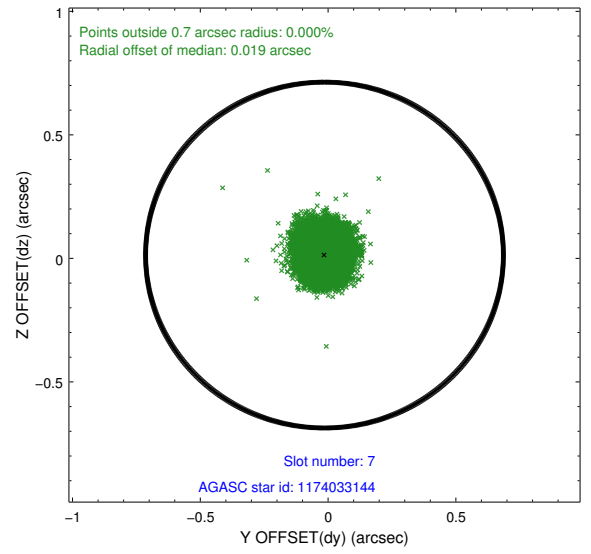
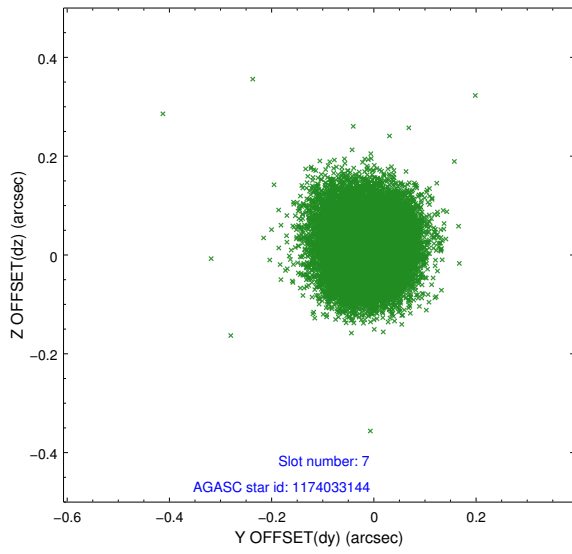
2.4.3 Slot 5



2.4.4 Slot 6

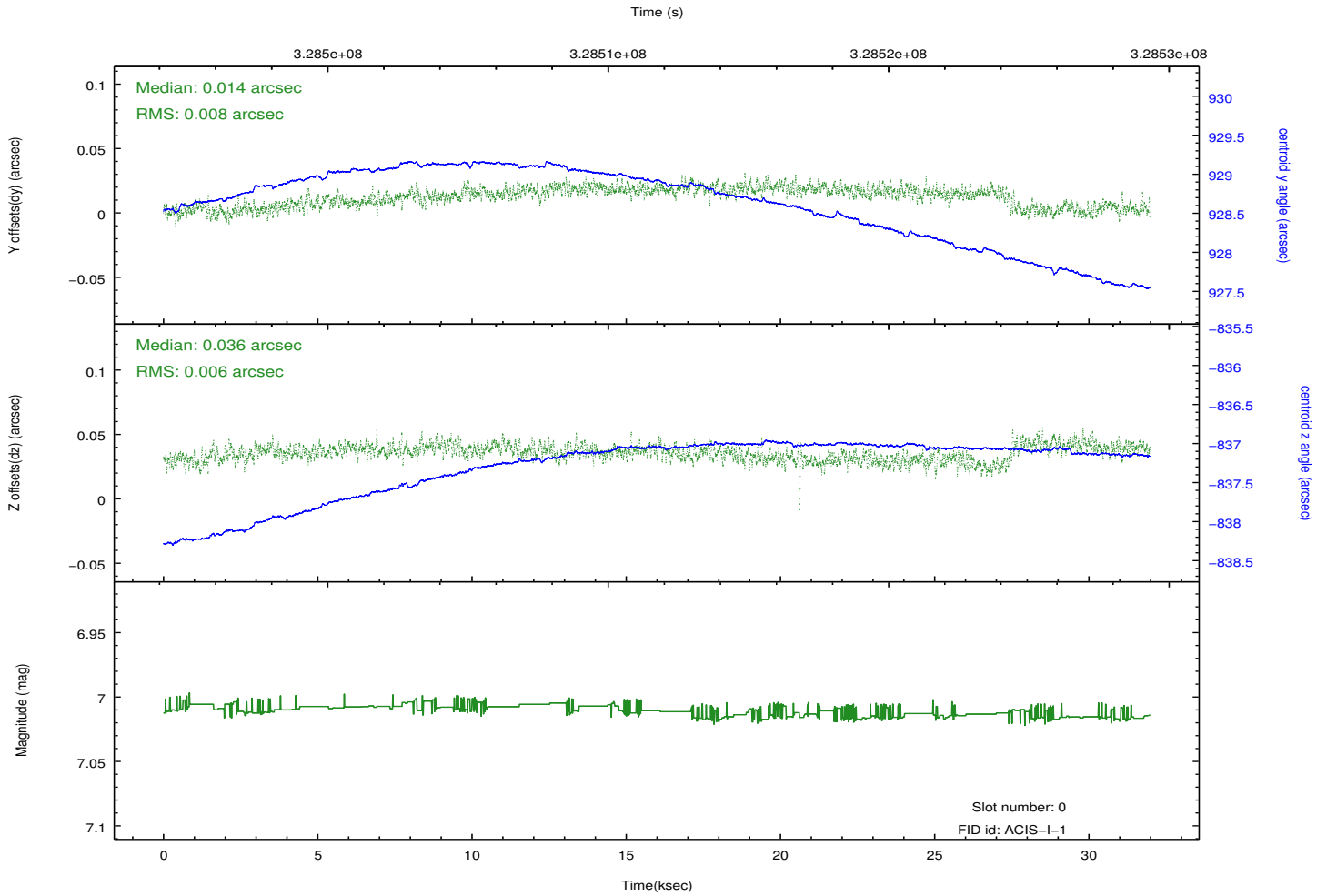
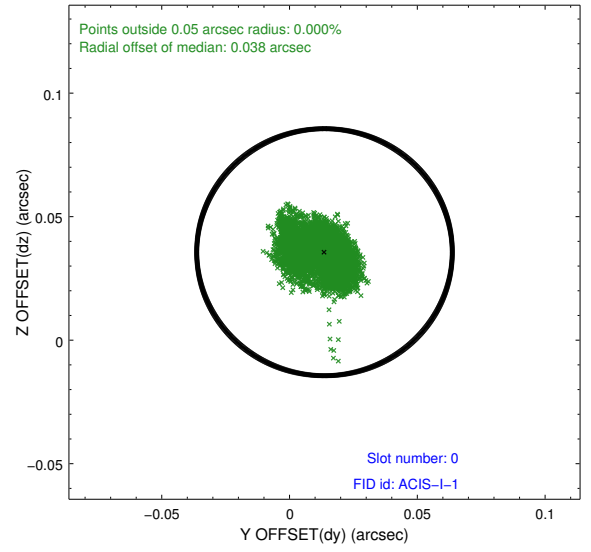
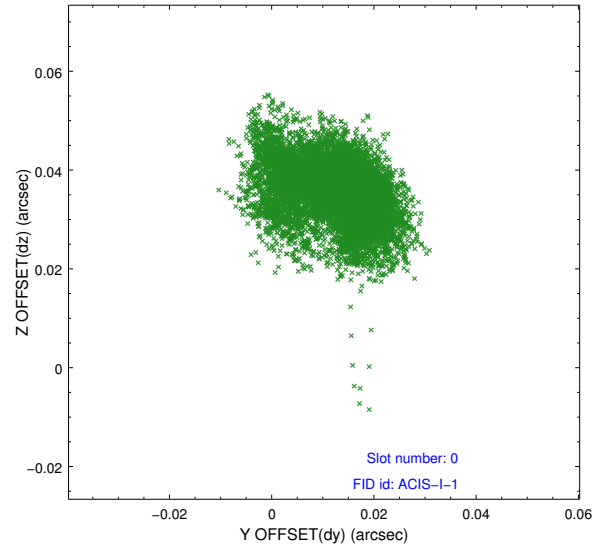


2.4.5 Slot 7

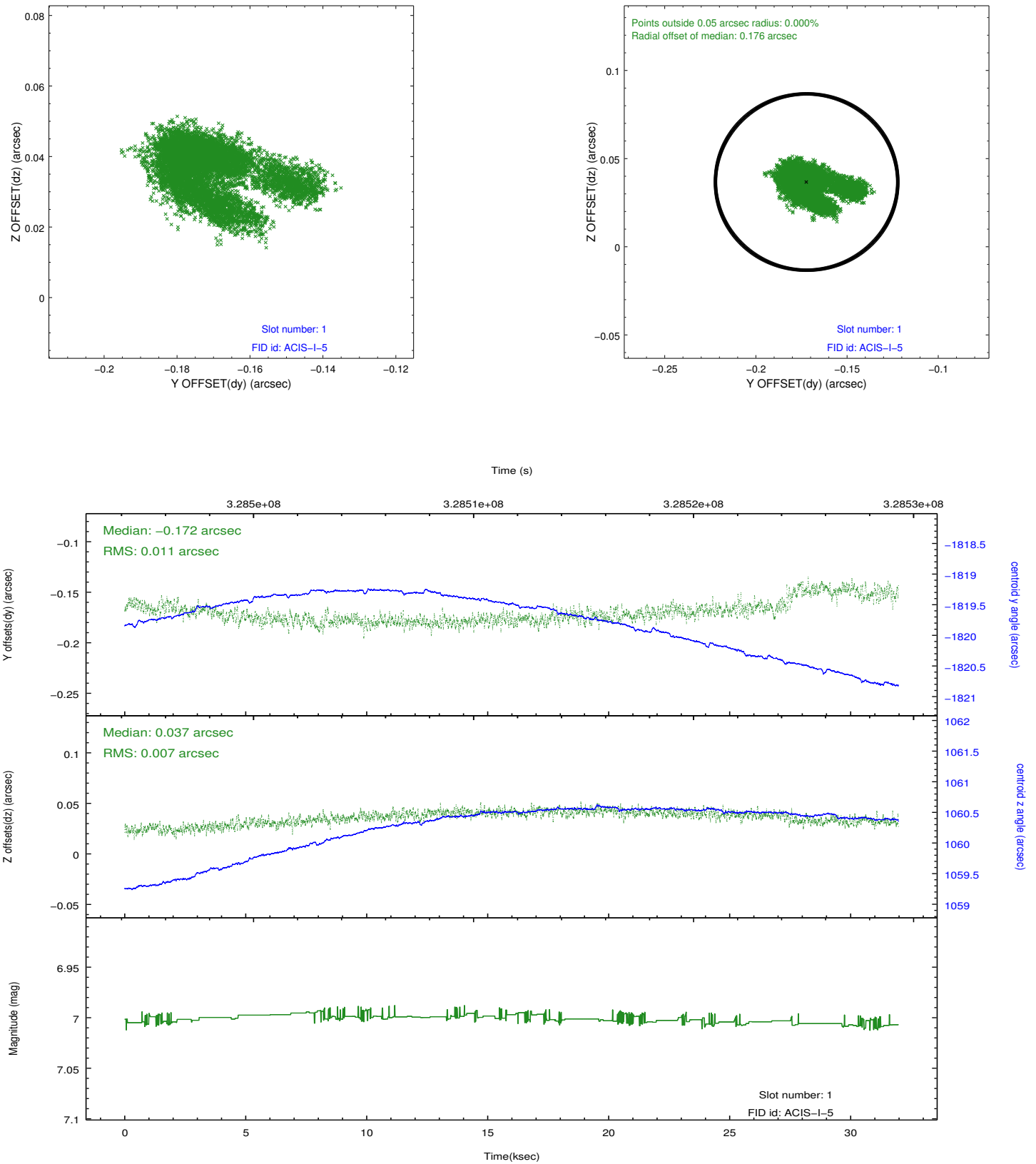


2.5 FID Slots

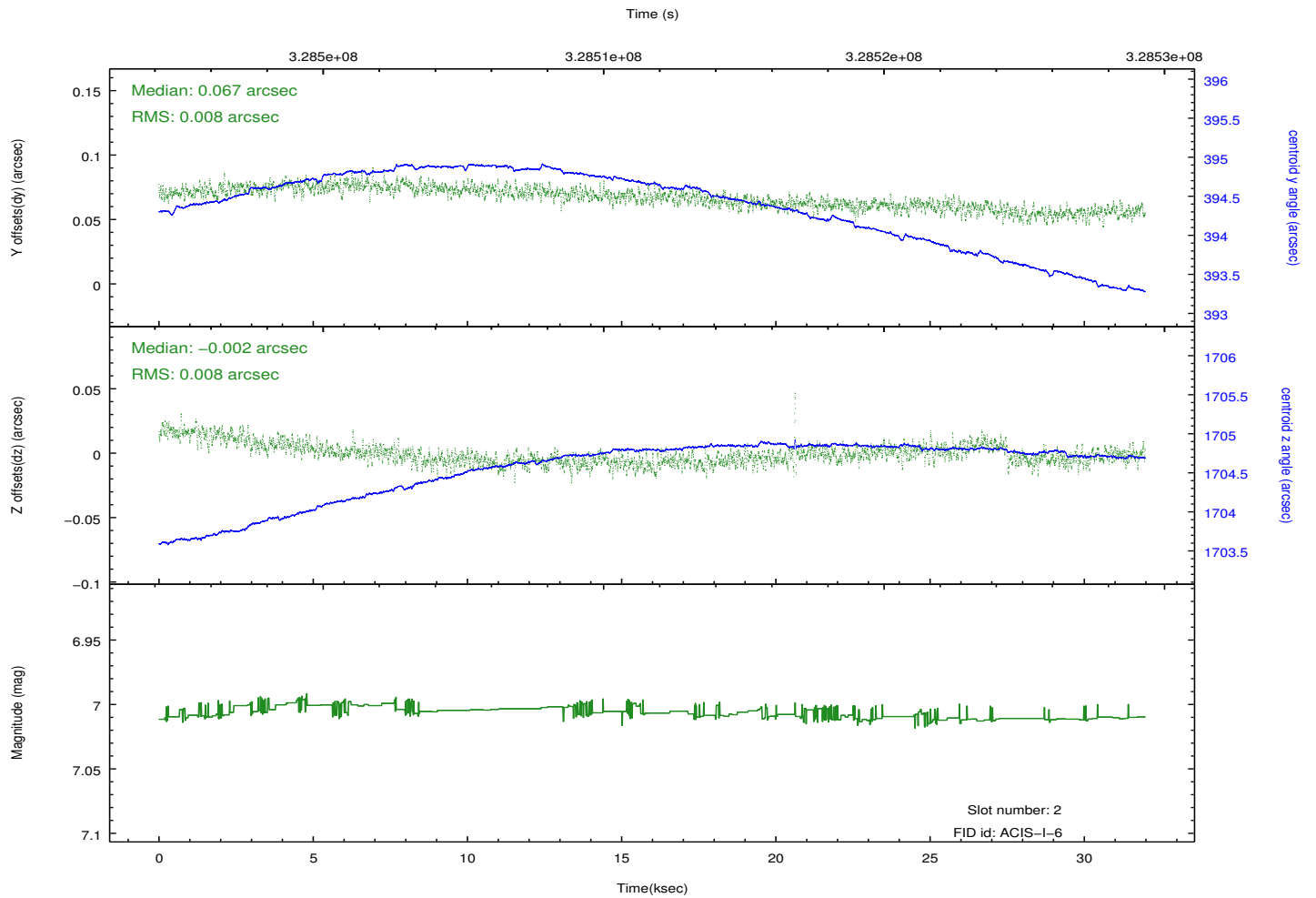
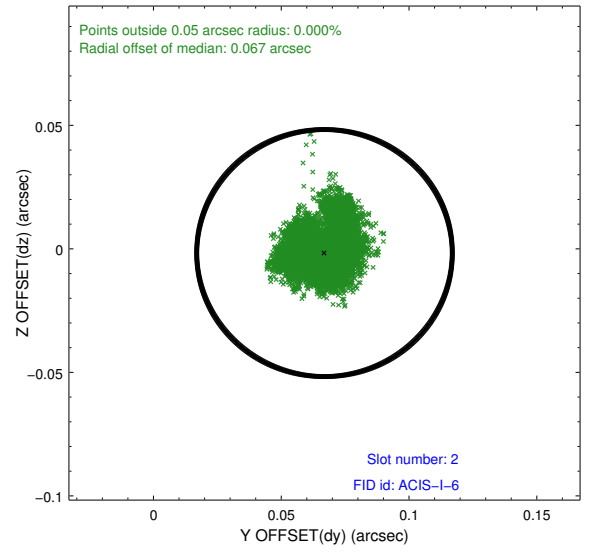
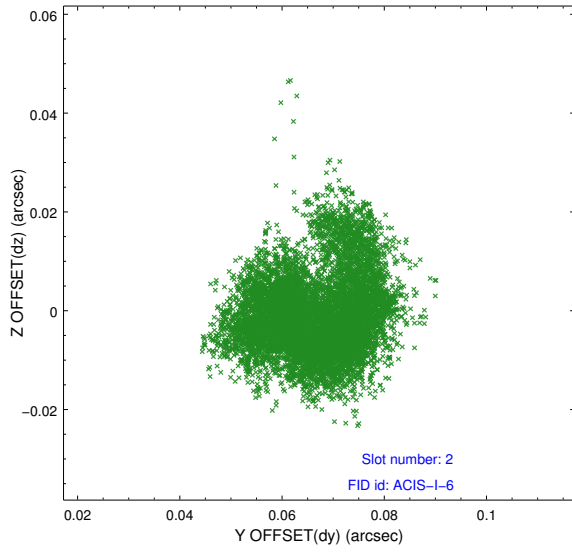
2.5.1 Slot 0



2.5.2 Slot 1



2.5.3 Slot 2



A Summary

A.1 Status

V&V Scientist	Beth Sundheim
V&V Date (YYYY-MM-DD)	2012.05.21
V&V Edition	1
V&V Disposition and Status	OK
V&V Charge Time	31.8463179

A.2 Comments