

V&V Reference Report

L2 ASCDS Version : 8.4.4

Observation 9539 - L2 Version 2
Chandra X-Ray Center

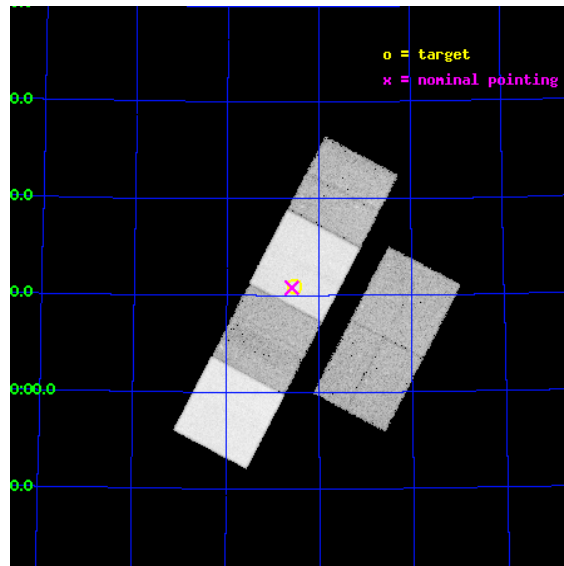
L2 Processing Date : May 17 2012

Contents

1	Front	2
2	OBI	3
2.1	OBI	3
2.1.1	Images	3
2.1.2	Bias	3
2.1.3	Parameters	4
2.1.4	Events	4
2.2	Compared Parameters	5
2.3	Aspect	6
2.4	Star Slots	9
2.4.1	Slot 3	9
2.4.2	Slot 4	10
2.4.3	Slot 5	11
2.4.4	Slot 6	12
2.4.5	Slot 7	13
2.5	FID Slots	14
2.5.1	Slot 0	14
2.5.2	Slot 1	15
2.5.3	Slot 2	16
A	Summary	17
A.1	Status	17
A.2	Comments	17

1 Front

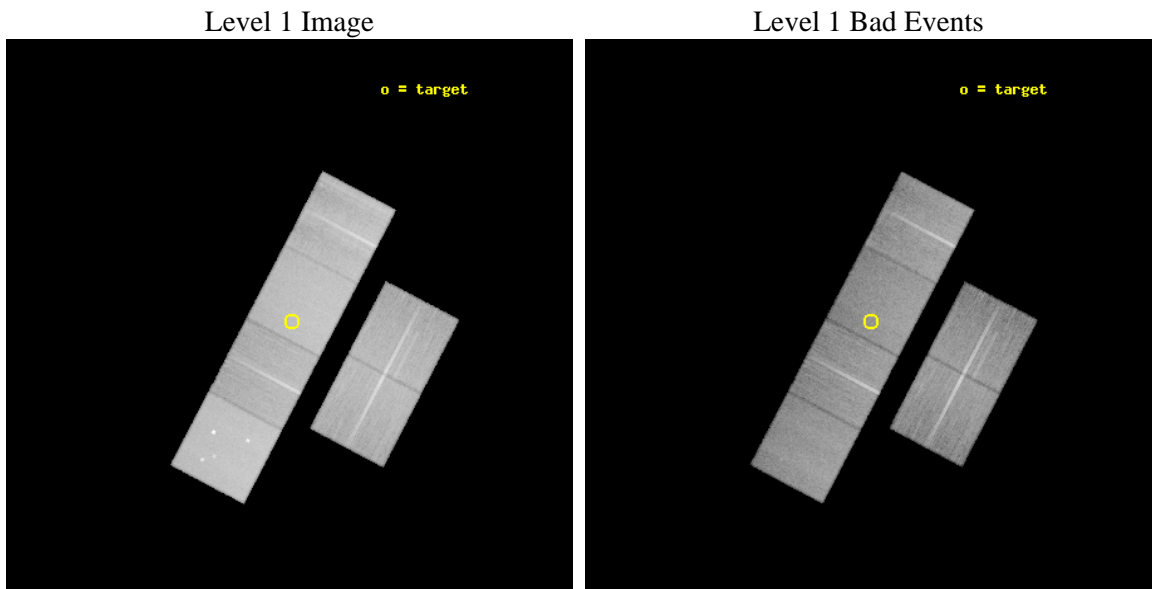
seq_num	600680	Sequence number
obs_id	9539	Observation id
title	Galaxies across the Octaves: A Chandra Legacy Survey of SINGS Galaxies	Proposal title
observer	Dr Leigh Jenkins	Principal investigator
object	Holmberg I	Source name
dtcycle	0	
cycle	P	events from which exps? Prim/Second/Both
ra_targ	145.134583	Observer's specified target RA [deg]
dec_targ	71.182222	Observer's specified target Dec [deg]
ra_nom	145.14753859892	Nominal RA [deg]
dec_nom	71.179740474467	Nominal Dec [deg]
roll_nom	297.61023955791	Nominal Roll [deg]
revision	2	Processing version of data
ontime	26249.599902272	Sum of GTIs [s]
livetime	25917.211662698	Livetime [s]
ontime2	26249.599902272	Sum of GTIs [s]
ontime3	26249.599902272	Sum of GTIs [s]
ontime5	26249.599902272	Sum of GTIs [s]
ontime6	26249.599902272	Sum of GTIs [s]
ontime7	26249.599902272	Sum of GTIs [s]
ontime8	26249.599902272	Sum of GTIs [s]
l2events	420359	Number of level 2 events



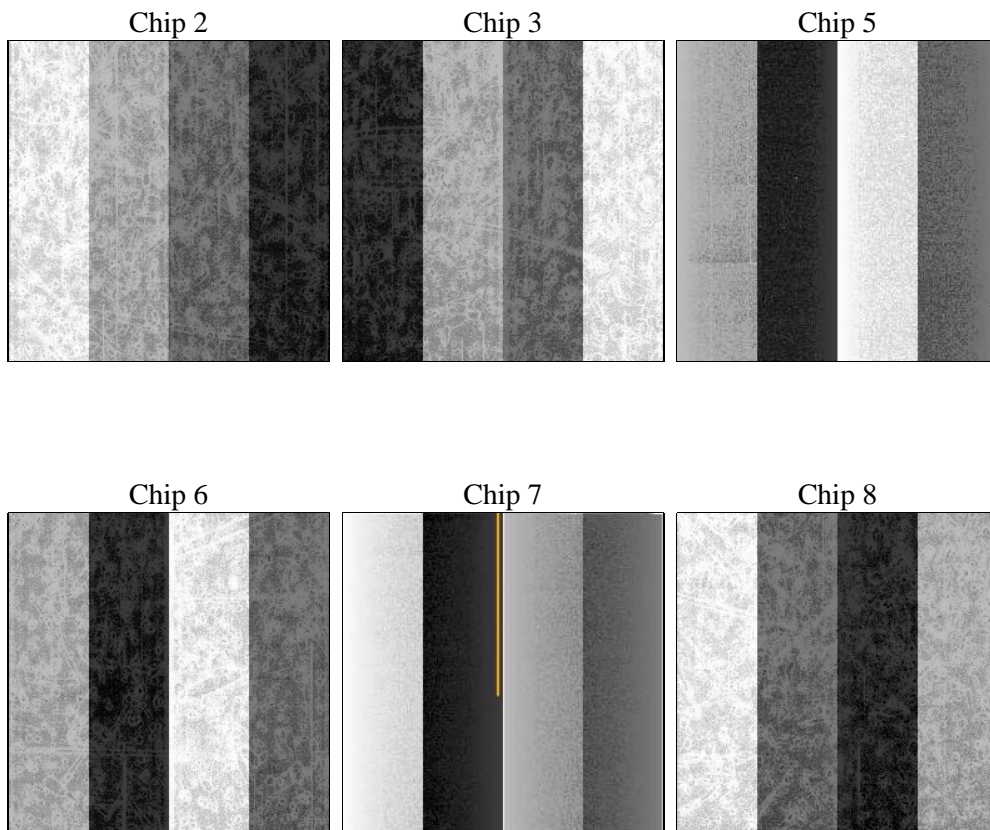
2 OBI

2.1 OBI

2.1.1 Images



2.1.2 Bias



2.1.3 Parameters

obi_num	0	Obi number	sched_exp_time	26300.000000	[s] Scheduled observation exposure time
ascdsver	8.4.4	Processing system revision	ontime	26249.599902272	Sum of GTIs [s]
caldbver	4.4.9	 	ontime2	26249.599902272	Sum of GTIs [s]
date	2012-05-17T02:34:18	Date and time of file creation	ontime3	26249.599902272	Sum of GTIs [s]
revision	2	Processing version of data	ontime5	26249.599902272	Sum of GTIs [s]
			ontime6	26249.599902272	Sum of GTIs [s]
			ontime7	26249.599902272	Sum of GTIs [s]
			ontime8	26249.599902272	Sum of GTIs [s]
			l1events	1807253	Number of level 1 events

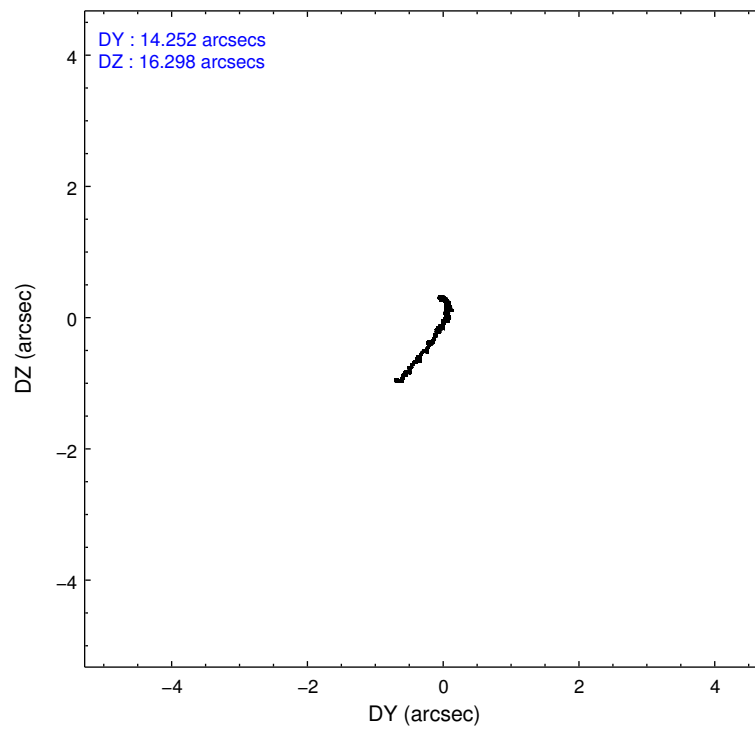
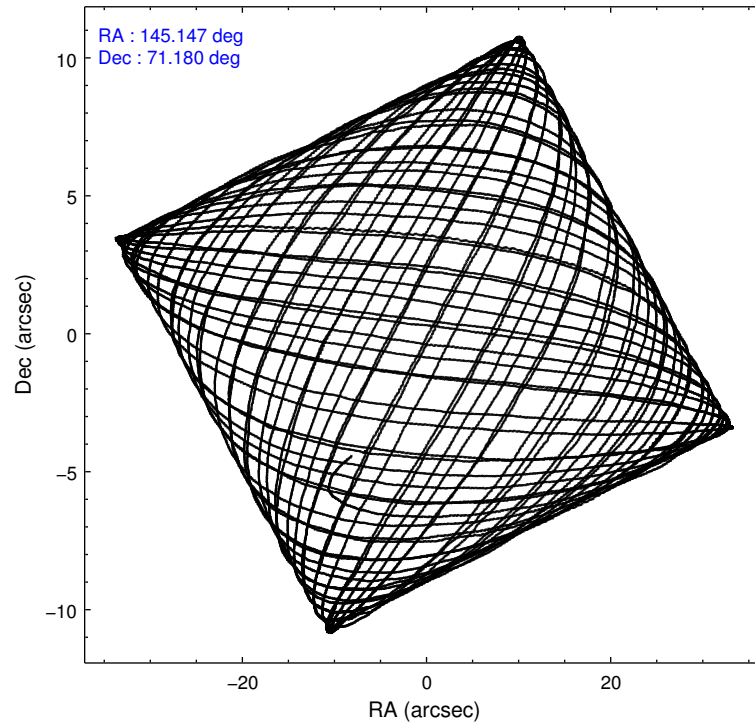
2.1.4 Events

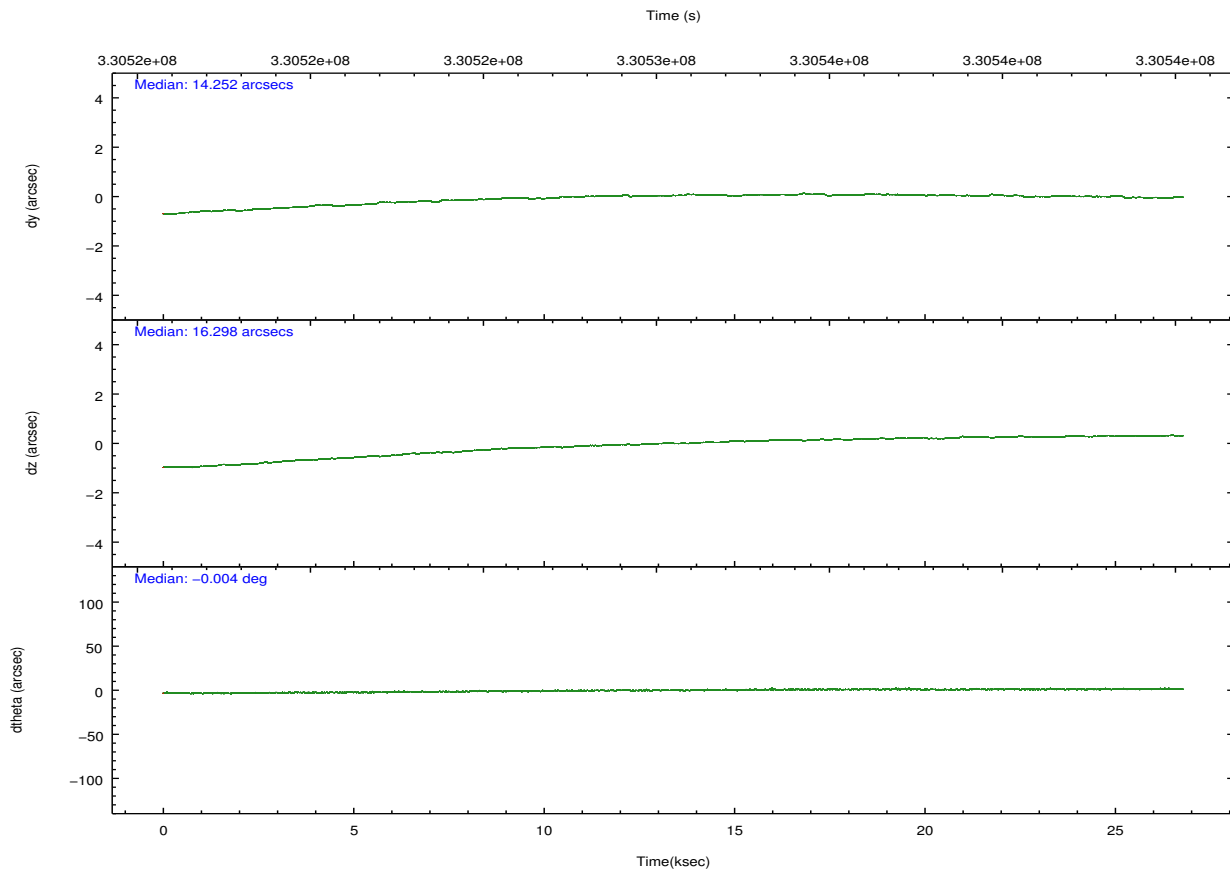
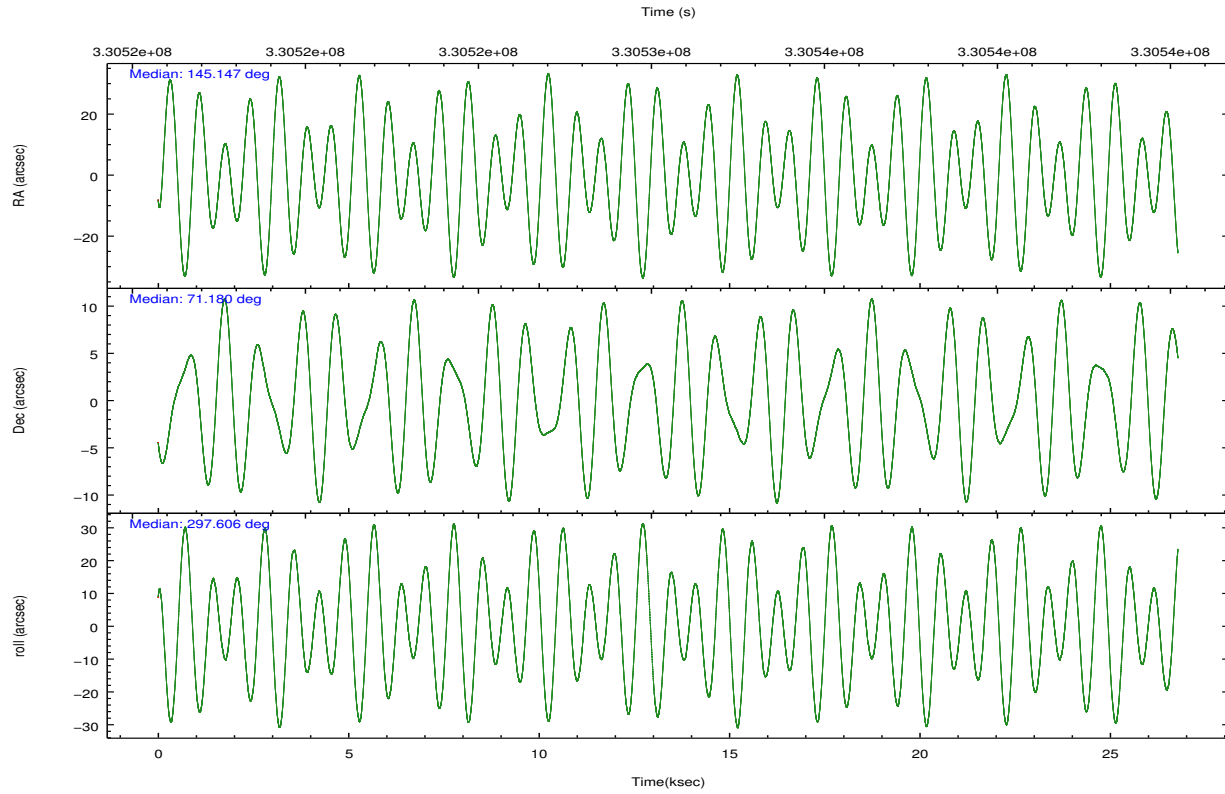
	ccd 2	ccd 3	ccd 5	ccd 6	ccd 7	ccd 8		ccd 2	ccd 3	ccd 5	ccd 6	ccd 7	ccd 8
level 1 events	255188	238878	391998	249341	349371	322477	grade 0 events	13522	13266	17610	11655	12133	23201
rejected events	224538	208338	211882	219033	204989	247296		5%	5%	4%	4%	3%	7%
rejected %	87%	87%	54%	87%	58%	76%	grade 1 events	176	158	547	141	394	263
								0%	0%	0%	0%	0%	0%
							grade 2 events	6613	5990	54887	6808	28832	17319
								2%	2%	14%	2%	8%	5%
							grade 3 events	2714	2900	6384	2874	12118	7607
								1%	1%	1%	1%	3%	2%
							grade 4 events	2703	2852	6149	2812	12110	7304
								1%	1%	1%	1%	3%	2%
							grade 5 events	10108	11482	27789	11979	32825	16066
								3%	4%	7%	4%	9%	4%
							grade 6 events	5107	5545	95142	6165	79221	19764
								2%	2%	24%	2%	22%	6%
							grade 7 events	214245	196685	183490	206907	171738	230953
								83%	82%	46%	82%	49%	71%

2.2 Compared Parameters

Parameter	Planned	Actual	Parameter	Planned	Actual
Instrument	ACIS	ACIS	Obspar format version number	7	7
Detector	ACIS-235678	ACIS-235678	Obspar file type	PREDICTED	ACTUAL
Grating	NONE	NONE	Obspar update status	NONE	UPDATED
Data mode	FAINT	FAINT	CCD I0 on	N	N
Observation mode	POINTING	POINTING	CCD I1 on	N	N
[deg] Pointing RA	145.075289	145.1475385989216	CCD I2 on	O1	Y
[deg] Pointing Dec	71.194057	71.17974047446742	CCD I3 on	O2	Y
[deg] Pointing Roll	297.522003	297.6102395579136	CCD S0 on	N	N
[mm] SIM focus pos	-0.684267	-0.6828225247311905	CCD S1 on	Y	Y
[mm] SIM defocus	0	0.001444936568705701	CCD S2 on	Y	Y
[mm] SIM translation stage pos	-190.132523	-190.1425803651734	CCD S3 on	Y	Y
[mm] SIM translation stage offset	0	0.01005778216563158	CCD S4 on	Y	Y
[s] Observation start time (MET)	330517559.184000	330516452.76934	CCD S5 on	N	N
Observation start date	2008-06-22T10:24:54	2008-06-22T10:07:32	Number of optional ACIS chips dropped	0	0
[s] Observation end time (MET)	330543859.184000	330545130.73324	On-chip summing requested	N	N
Observation end date	2008-06-22T17:43:14	2008-06-22T18:05:30	Subarray requested	NONE	NONE
Read mode	TIMED	TIMED	Alternating exposures requested	N	N
			[s] Primary exposure time	0.000000	3.2

2.3 Aspect



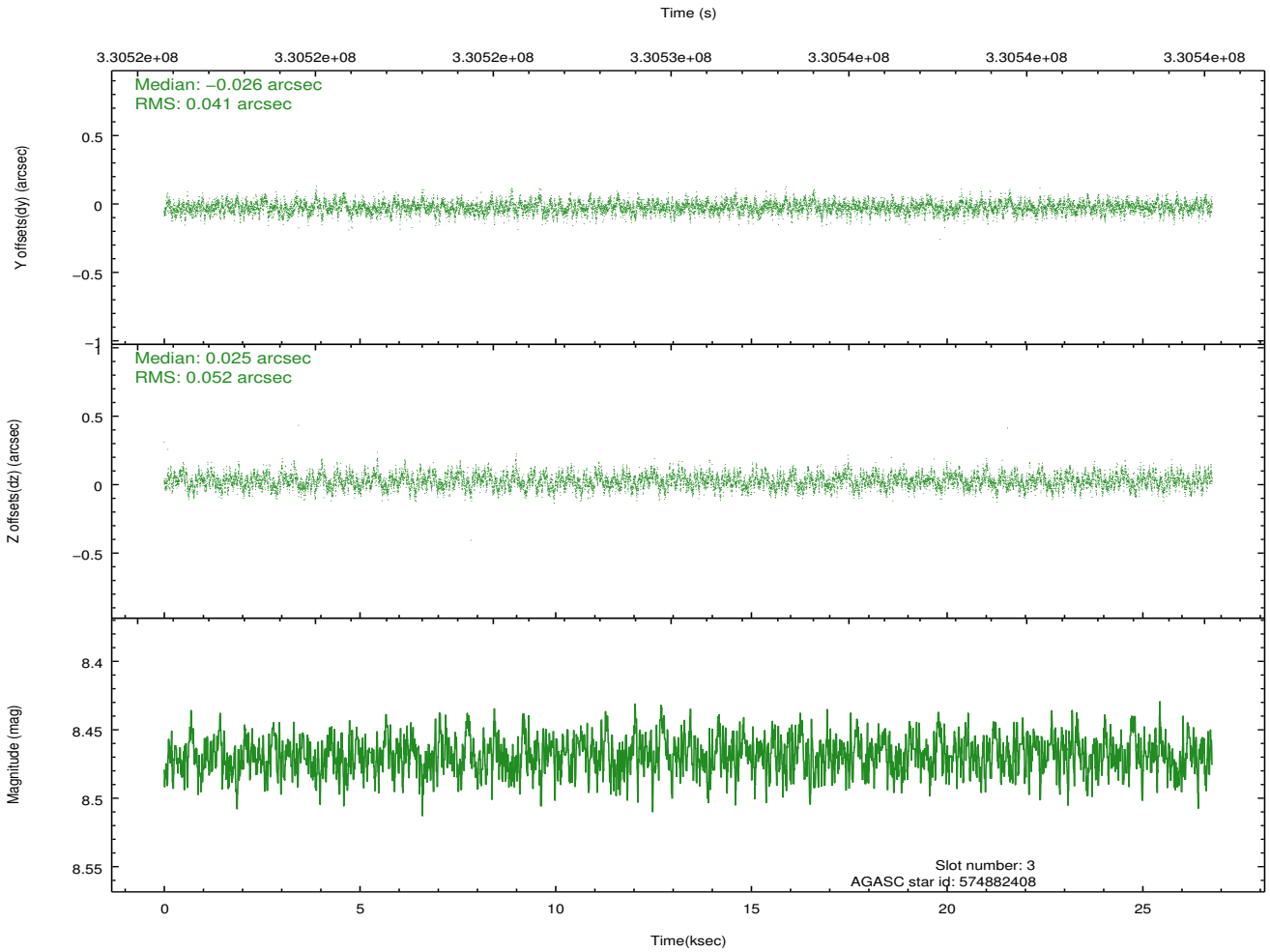
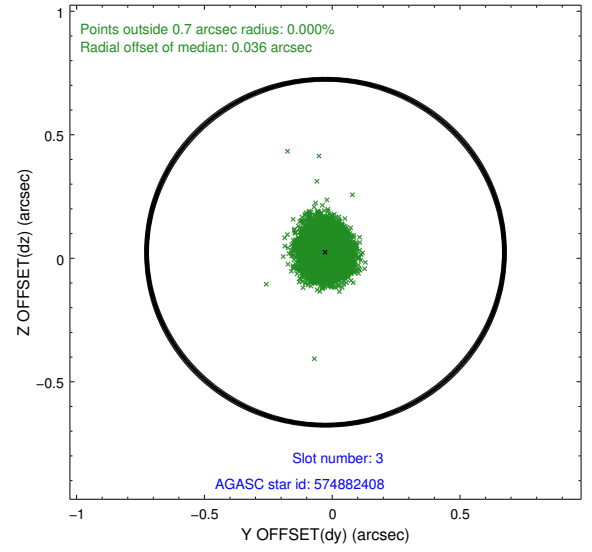
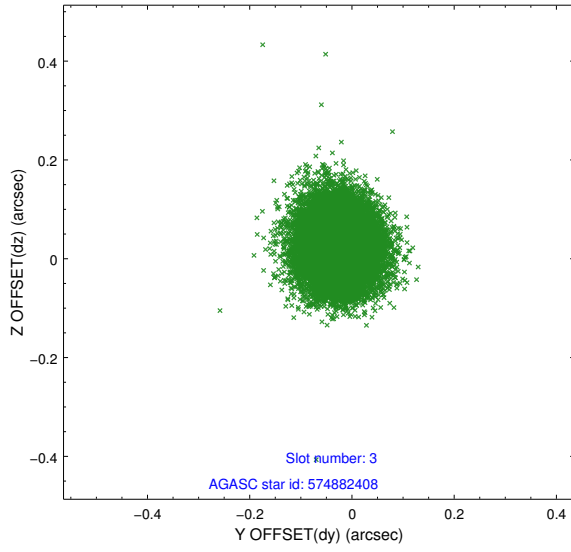


Slot Statistics

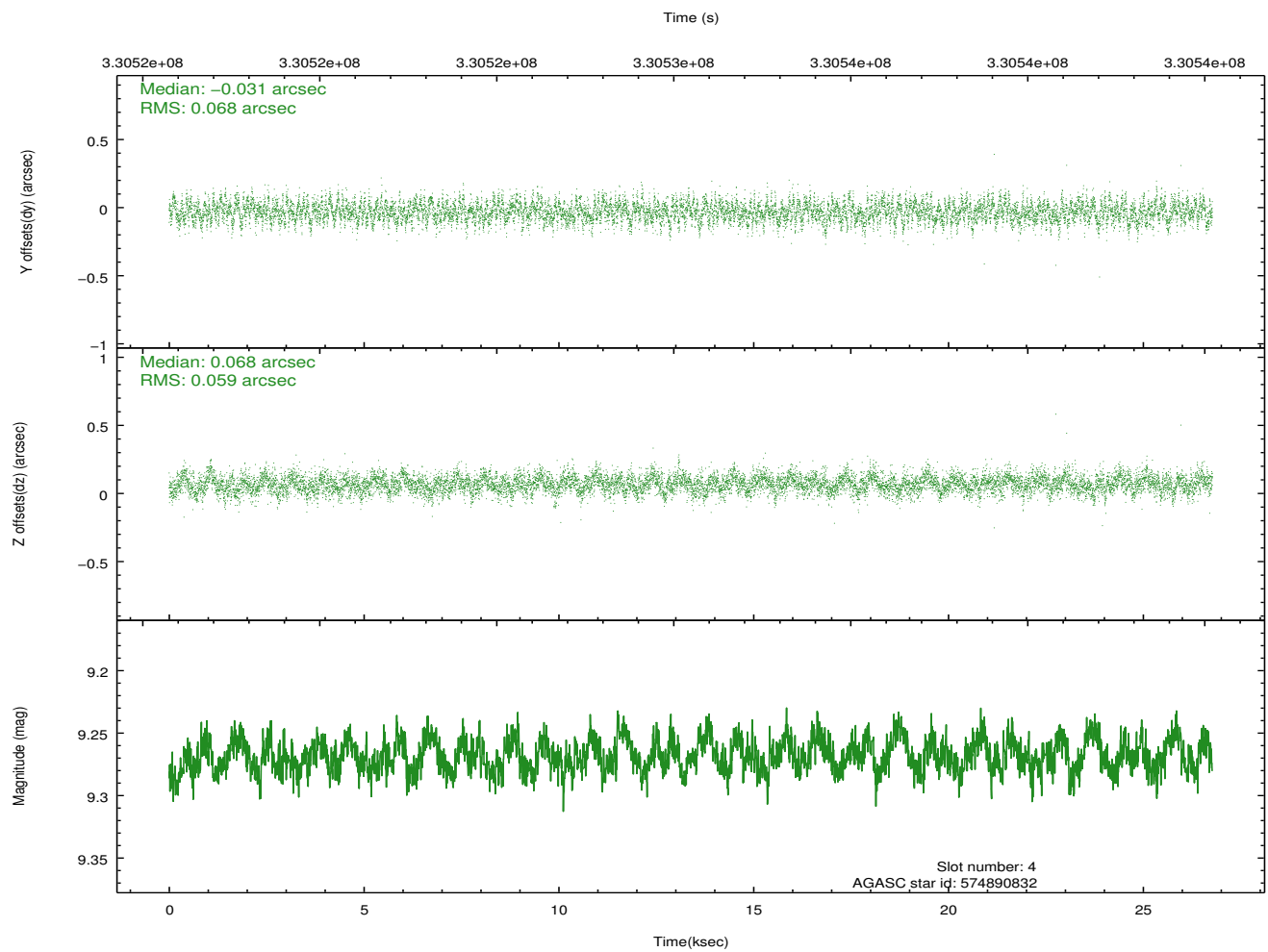
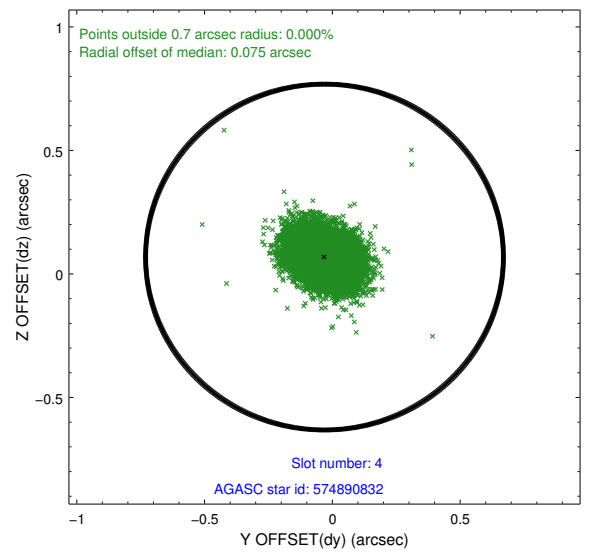
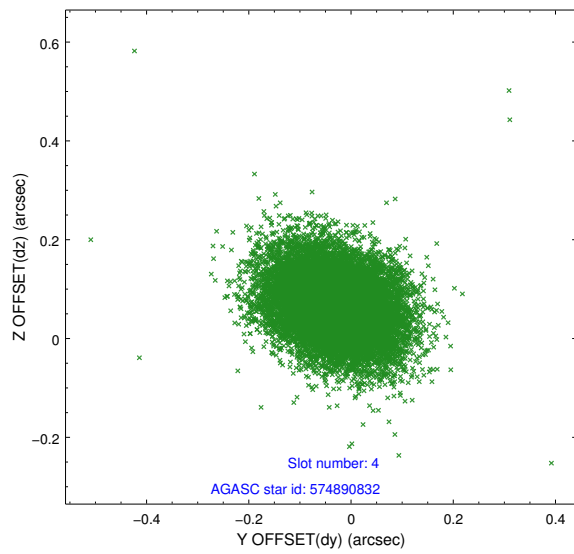
slot	status	id	mag	n_pts	med_dy	med_dz	dr1	dr2	ra	dec	mean_y	mean_z
0	FID	ACIS-S-2	6.87	6531	-0.051	0.001	0.009	0.013	0.000000	0.000000	-767.15	-1737.53
1	FID	ACIS-S-4	6.95	6531	0.144	0.024	0.007	0.014	0.000000	0.000000	2146.28	170.86
2	FID	ACIS-S-5	6.98	6532	-0.124	-0.017	0.008	0.014	0.000000	0.000000	-1819.93	164.62
3	GUIDE	574882408	8.47	13056	-0.026	0.025	0.070	0.112	146.273801	71.435507	-147.98	1626.66
4	GUIDE	574890832	9.27	13047	-0.031	0.068	0.095	0.155	145.931755	72.035994	-2254.34	2247.50
5	GUIDE	574895144	7.59	13062	-0.060	0.021	0.061	0.097	145.145069	71.755390	-1756.19	1002.26
6	GUIDE	574895448	9.18	13056	0.065	-0.081	0.092	0.146	144.543216	70.632184	1498.43	-1496.31
7	GUIDE	574895136	9.44	13049	0.051	-0.032	0.108	0.174	144.330368	71.111977	-143.21	-903.53

2.4 Star Slots

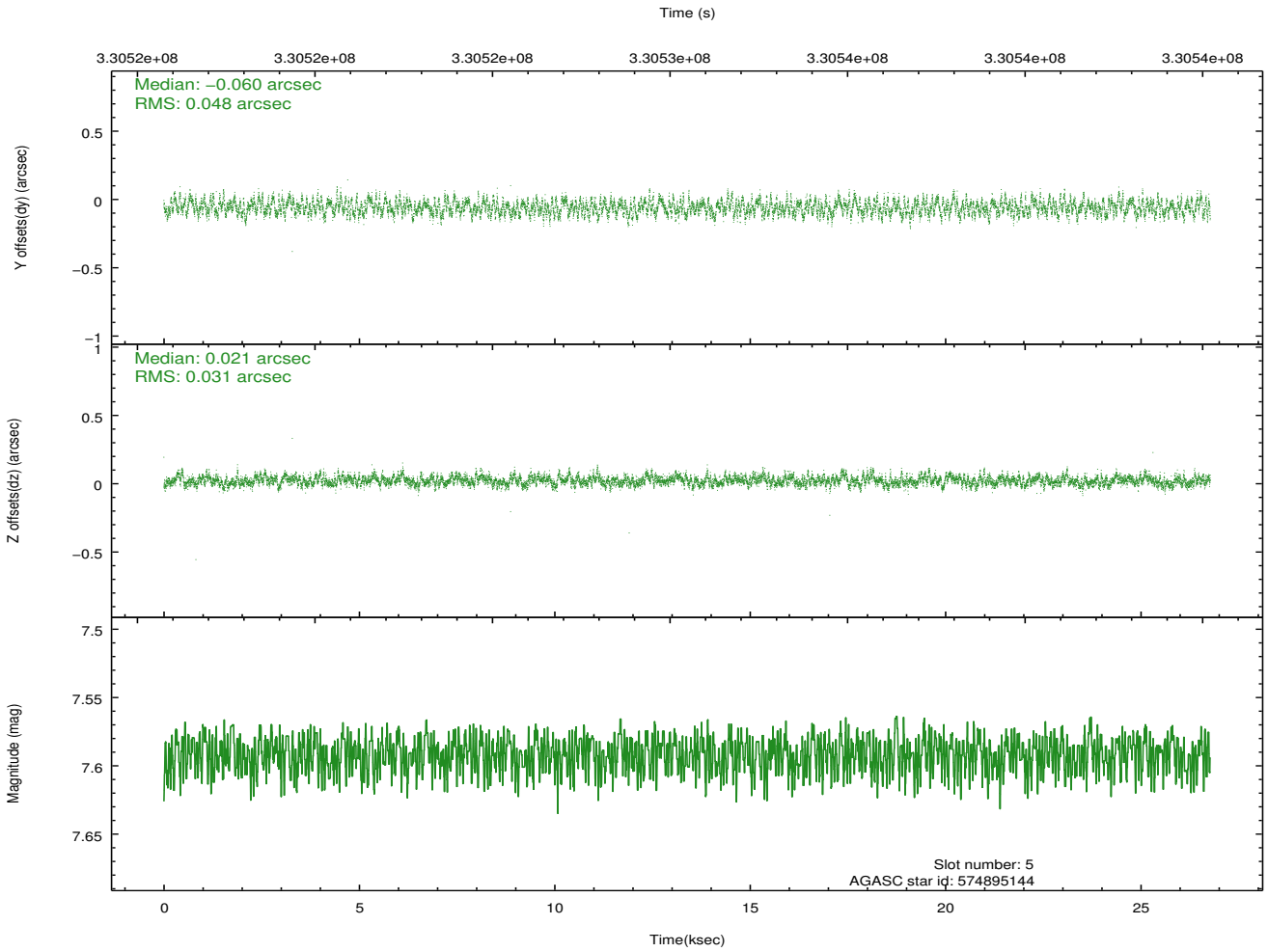
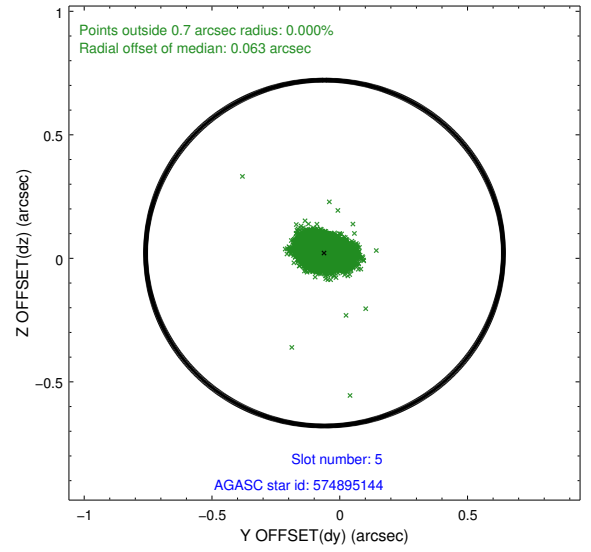
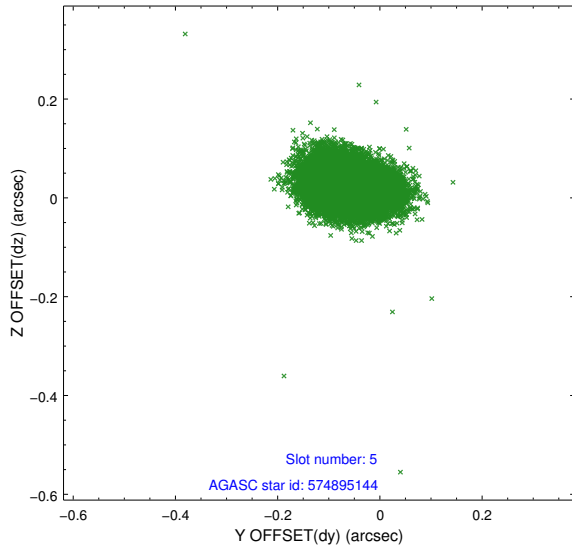
2.4.1 Slot 3



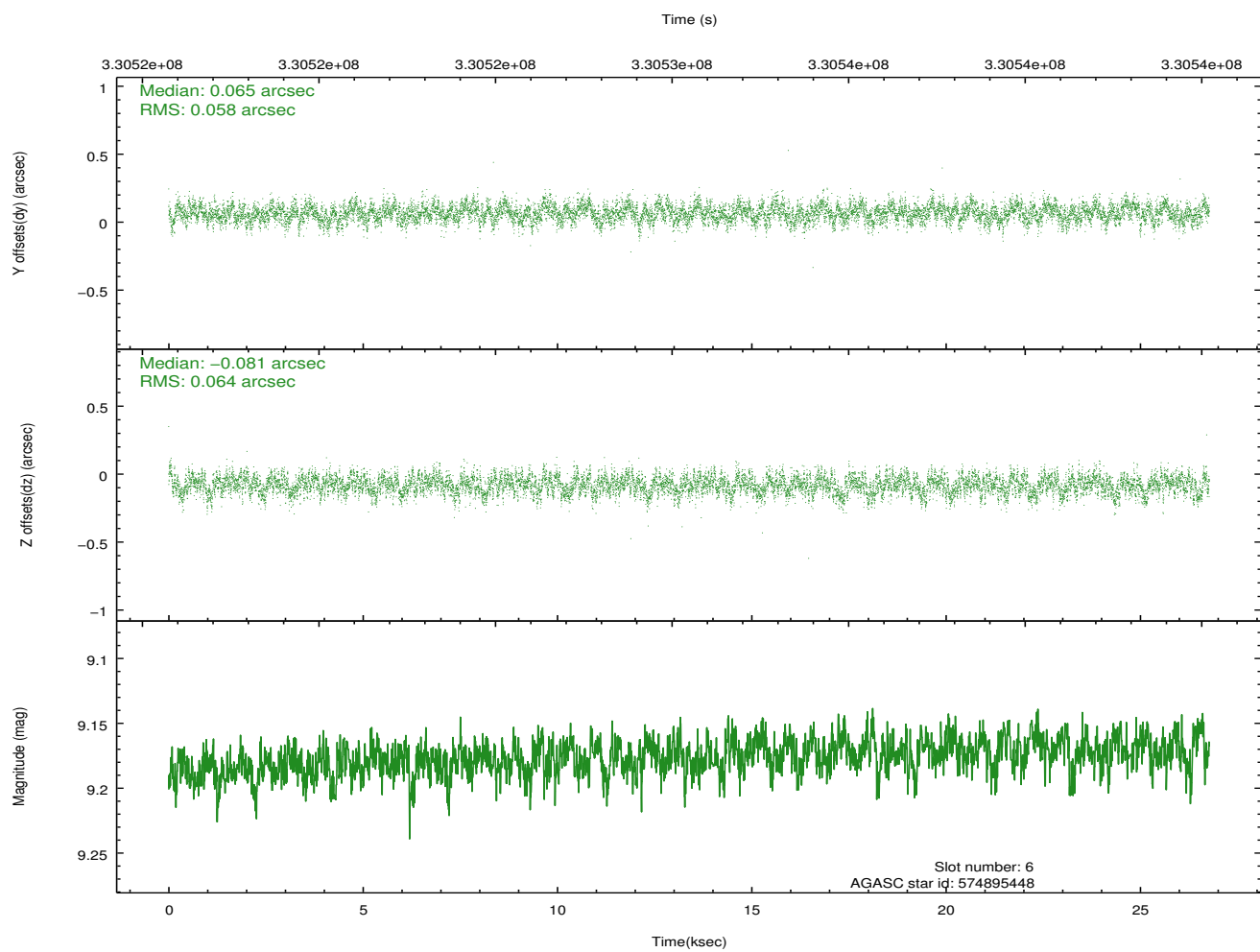
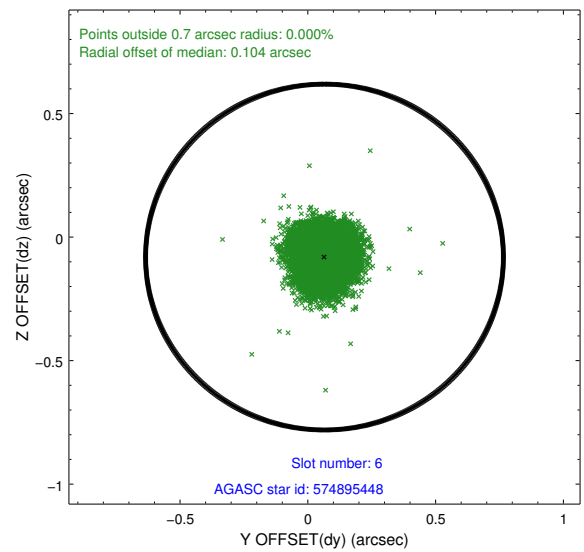
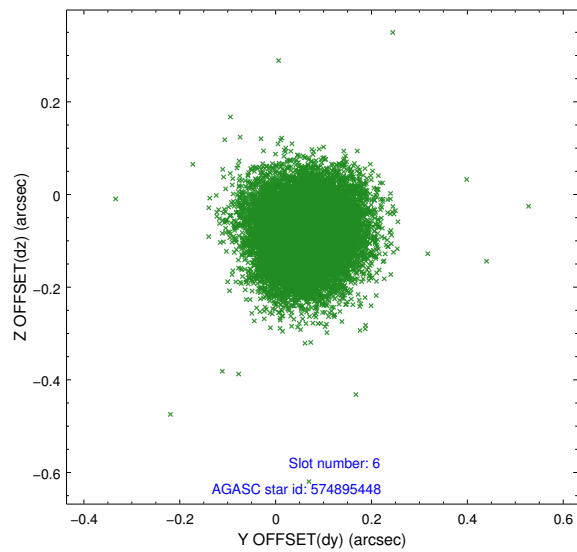
2.4.2 Slot 4



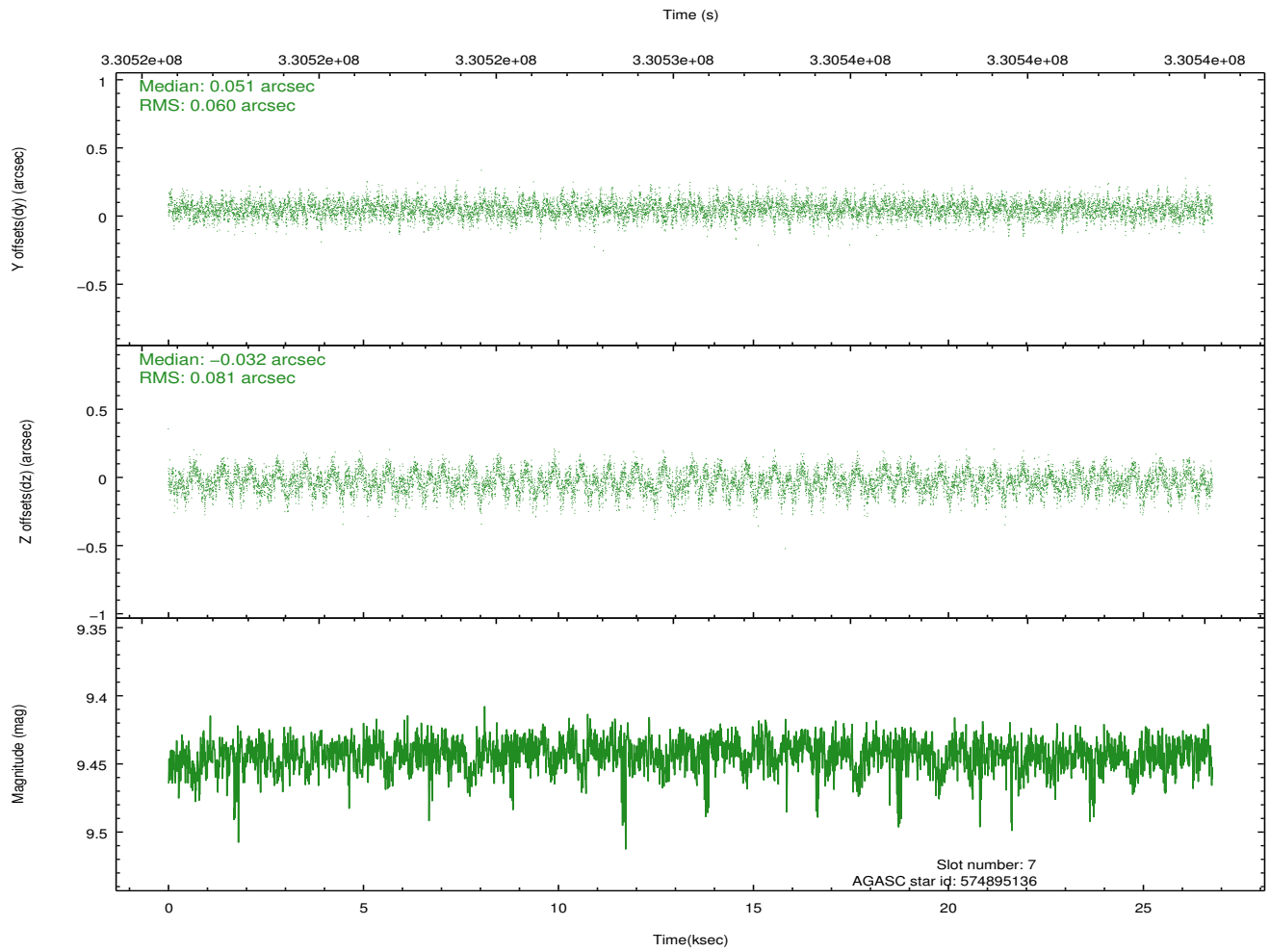
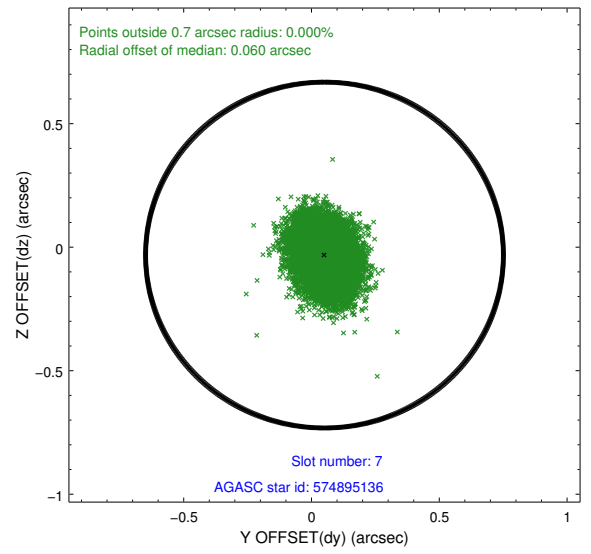
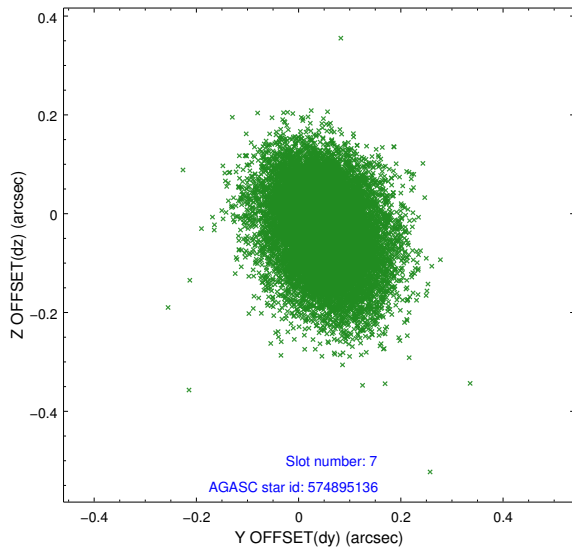
2.4.3 Slot 5



2.4.4 Slot 6

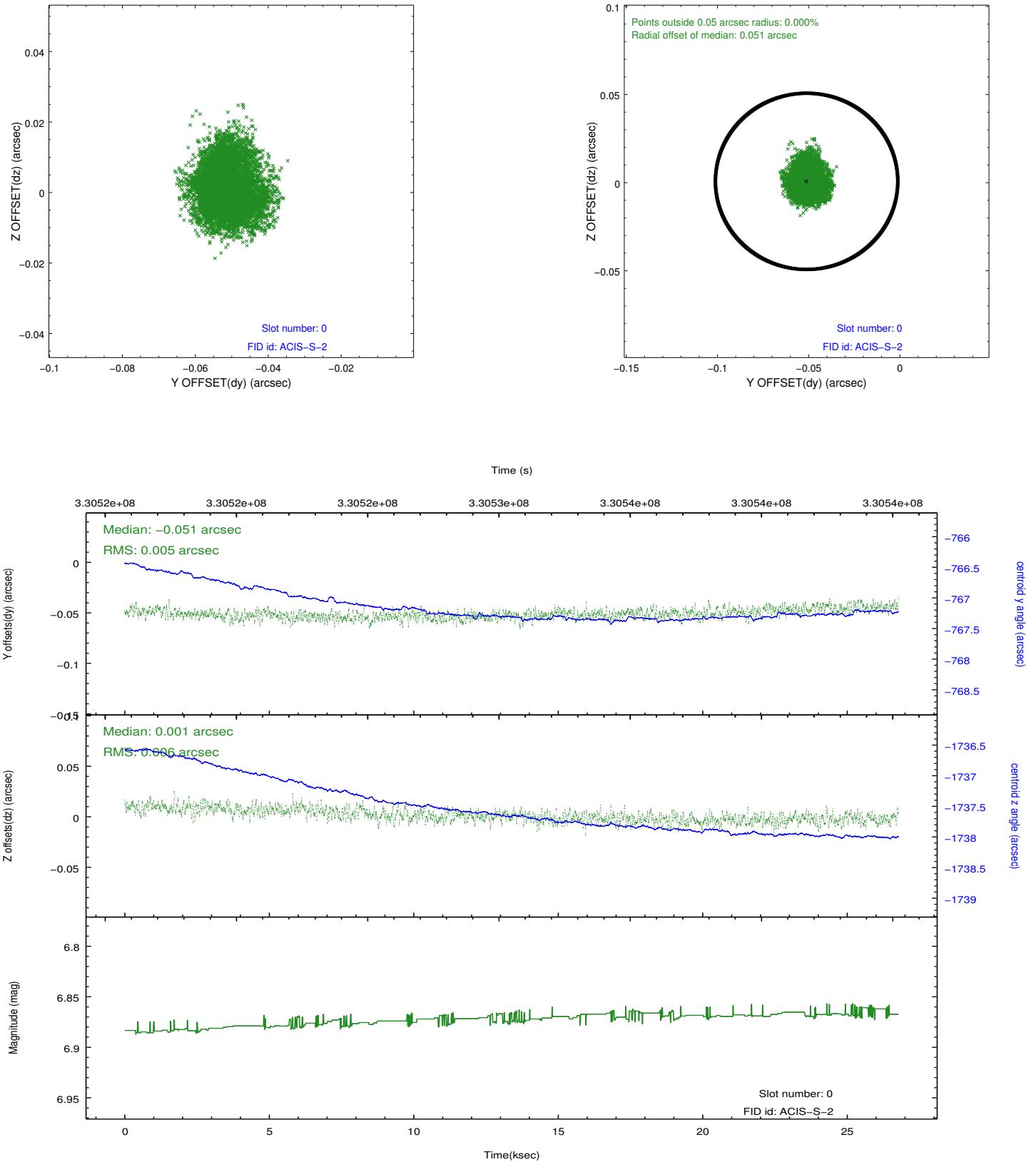


2.4.5 Slot 7

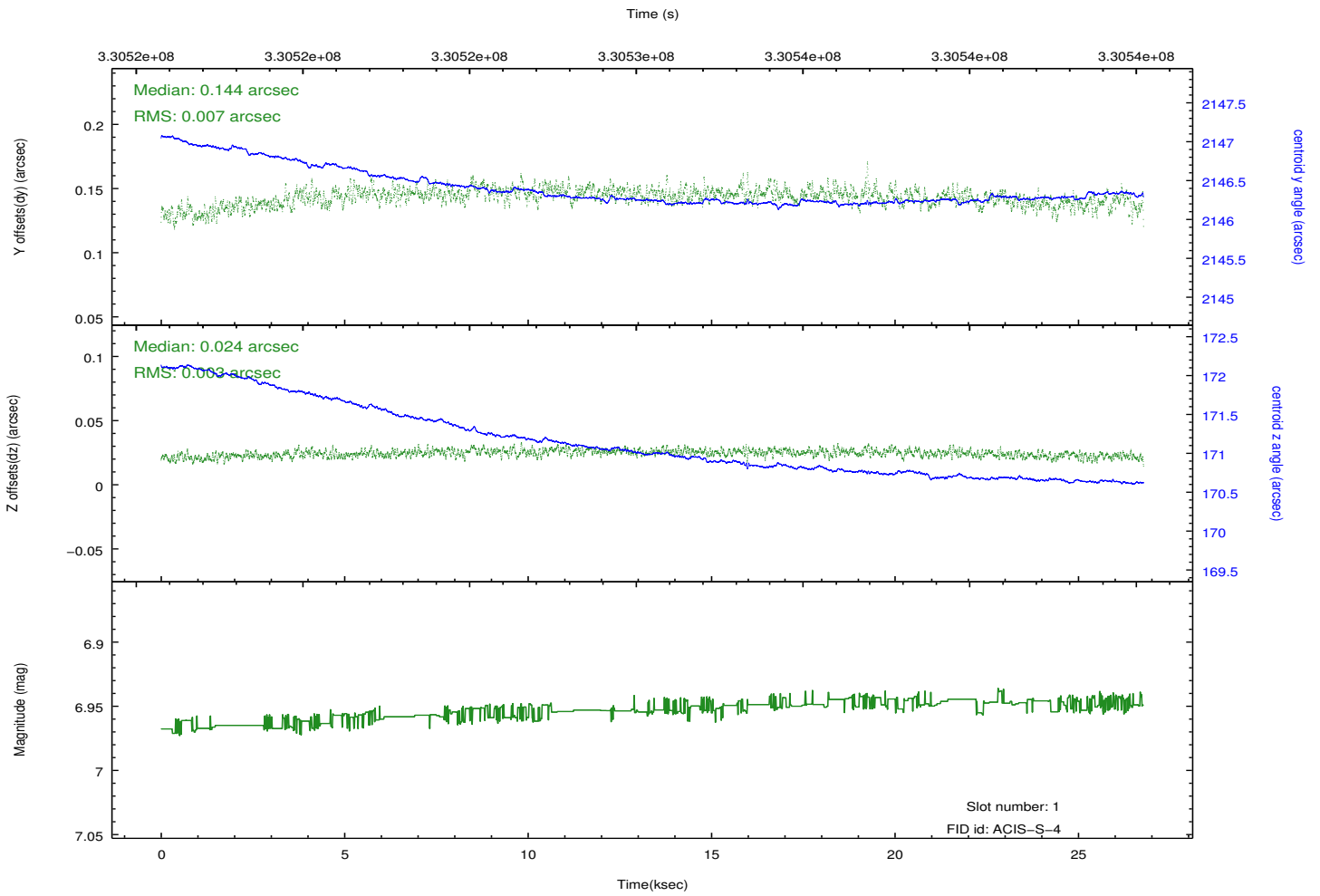
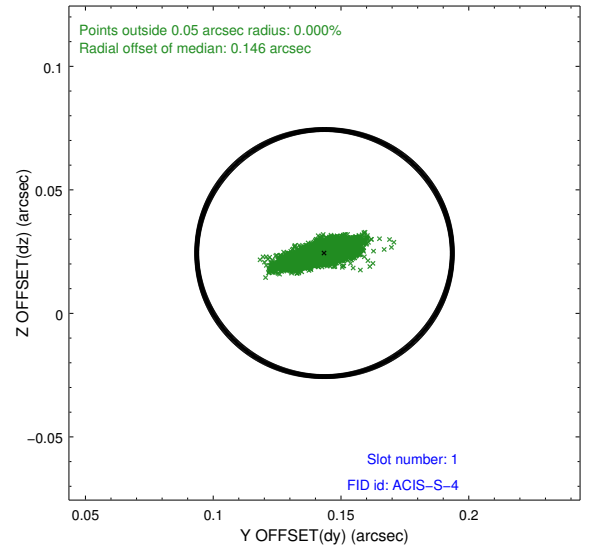
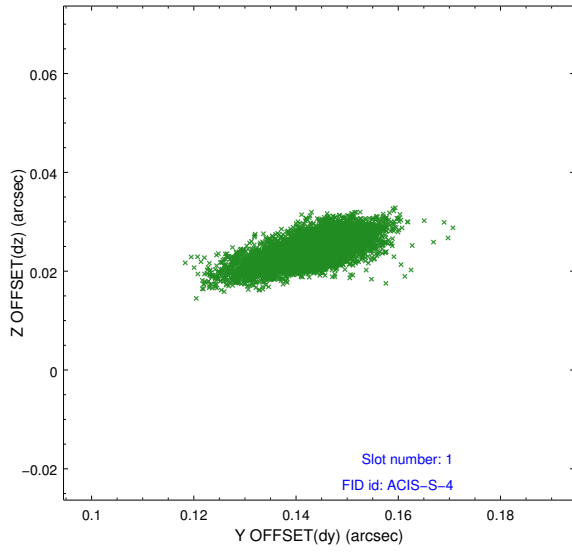


2.5 FID Slots

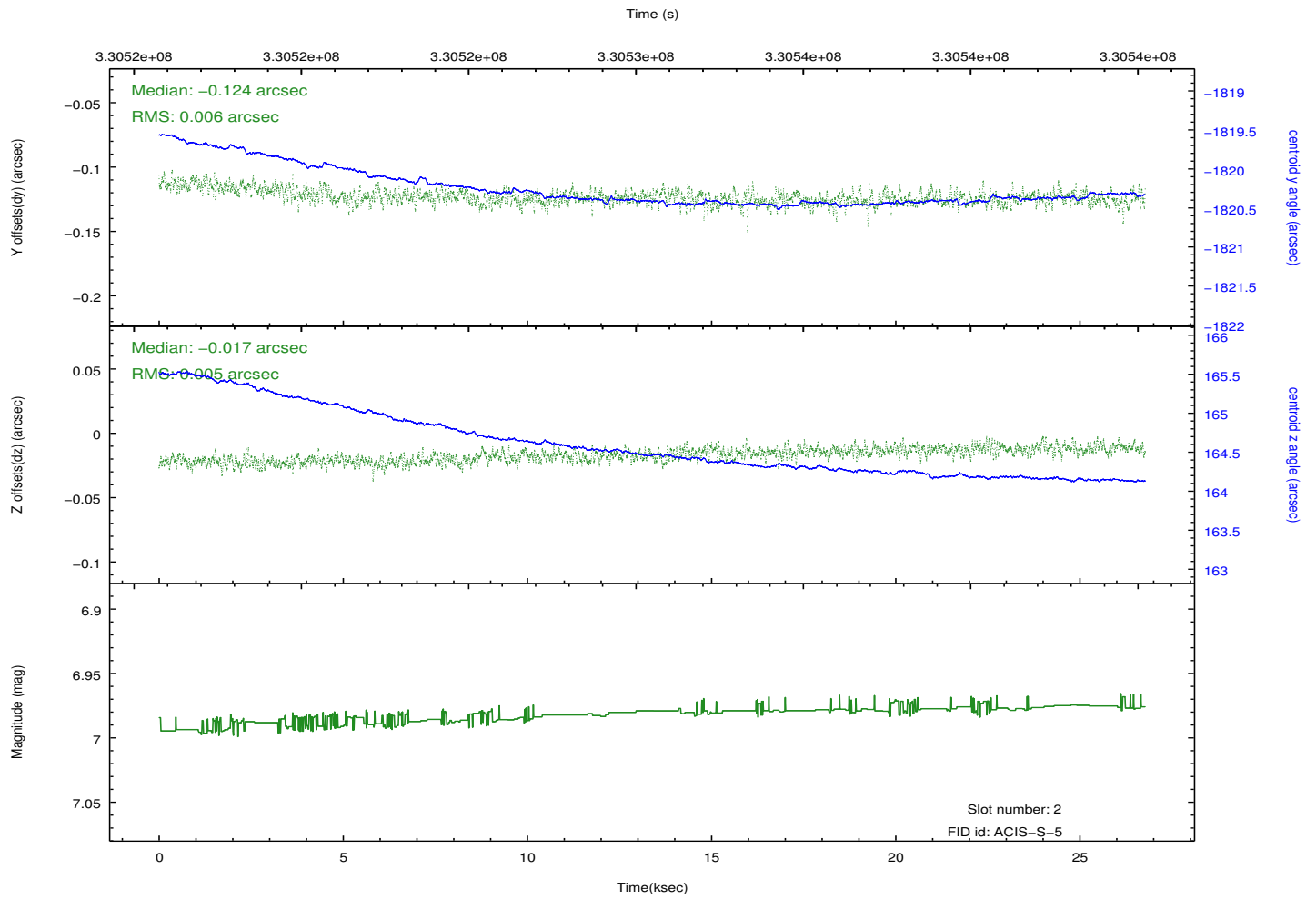
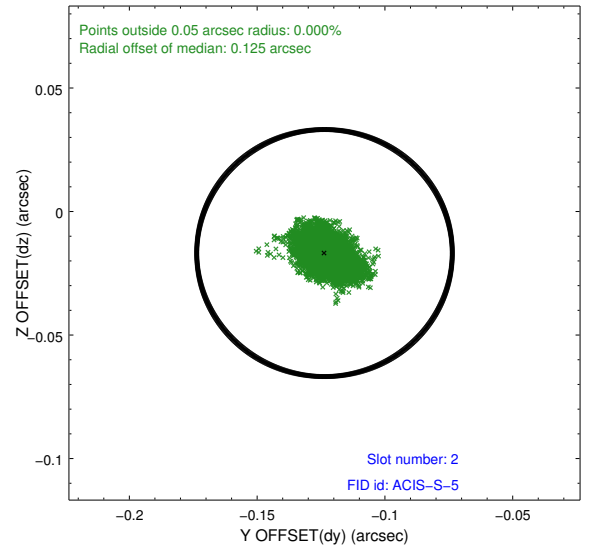
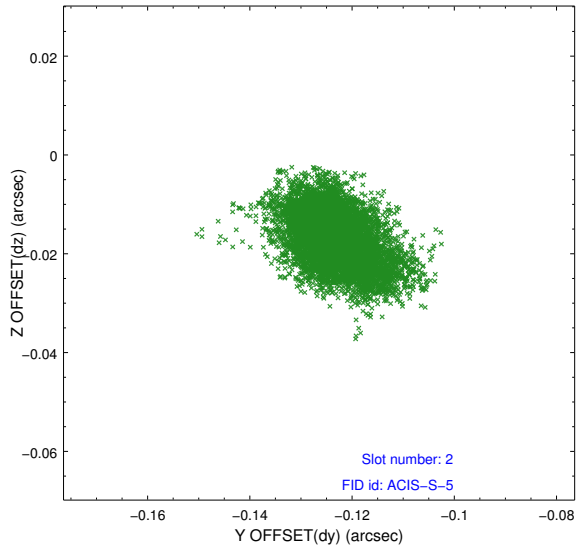
2.5.1 Slot 0



2.5.2 Slot 1



2.5.3 Slot 2



A Summary

A.1 Status

V&V Scientist	Jen Lauer
V&V Date (YYYY-MM-DD)	2012.05.22
V&V Edition	1
V&V Disposition and Status	OK
V&V Charge Time	26.2495999

A.2 Comments

Roll preference not met.