

V&V Reference Report

L2 ASCDS Version : 8.1.1

Observation 969 - L2 Version 4
Chandra X-Ray Center

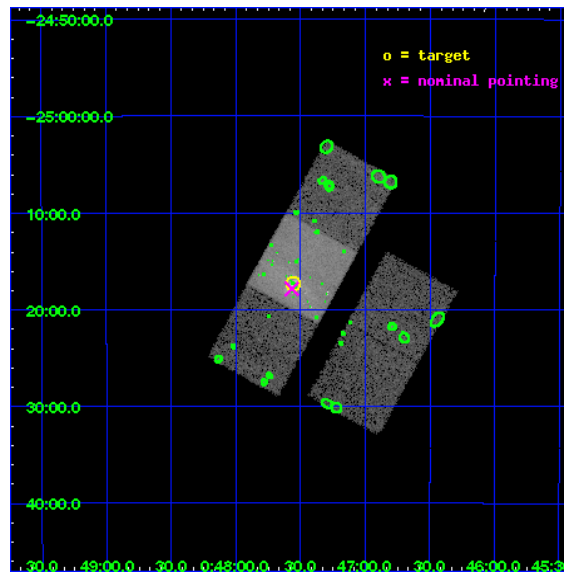
L2 Processing Date : Nov 26 2009

Contents

1	Front	2
2	OBI	3
2.1	OBI	3
2.1.1	Images	3
2.1.2	Bias	3
2.1.3	Parameters	4
2.1.4	Events	4
2.2	Compared Parameters	5
2.3	Aspect	6
2.4	Star Slots	9
2.4.1	Slot 3	9
2.4.2	Slot 4	10
2.4.3	Slot 5	11
2.4.4	Slot 6	12
2.4.5	Slot 7	13
2.5	FID Slots	14
2.5.1	Slot 0	14
2.5.2	Slot 1	15
2.5.3	Slot 2	16
3	Point Sources	17
A	Summary	18
A.1	Status	18
A.2	Comments	18

1 Front

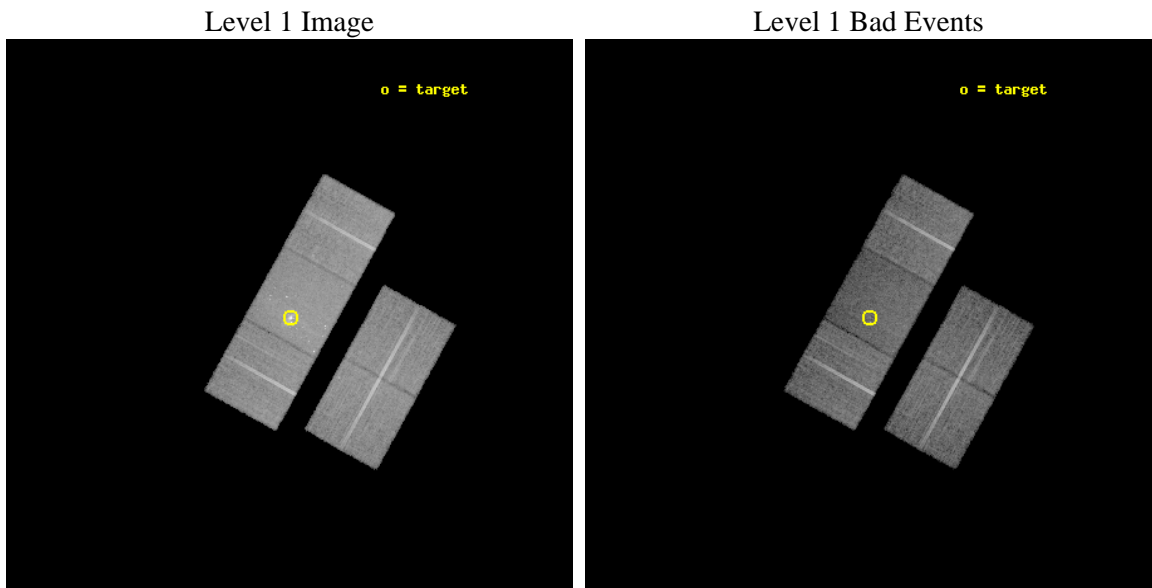
seq_num	600114	Sequence number
obs_id	969	Observation id
title	STARBURSTS AND THE `POLLUTION' OF THE IGM: AXAF OBSERVATIONS OF THE SUPERWIND FROM NGC 253	Proposal title
observer	Dr. Tim Heckman	Principal investigator
object	NGC 253	Source name
dtcycle	0	
cycle	P	events from which exps? Prim/Second/Both
ra_targ	11.888333	Observer's specified target RA
dec_targ	-25.288056	Observer's specified target Dec
ra_nom	11.891895487079	Nominal RA
dec_nom	-25.297774444829	Nominal Dec
roll_nom	299.06699842242	Nominal Roll
revision	4	Processing version of data
ontime	14165.394524507	Sum of GTIs [s]
livetime	13986.023769661	Livetime [s]
ontime2	14165.353484504	Sum of GTIs [s]
ontime3	14165.271404505	Sum of GTIs [s]
ontime6	14165.312444508	Sum of GTIs [s]
ontime7	14165.394524507	Sum of GTIs [s]
ontime8	14165.230364509	Sum of GTIs [s]
l2events	123979	Number of level 2 events



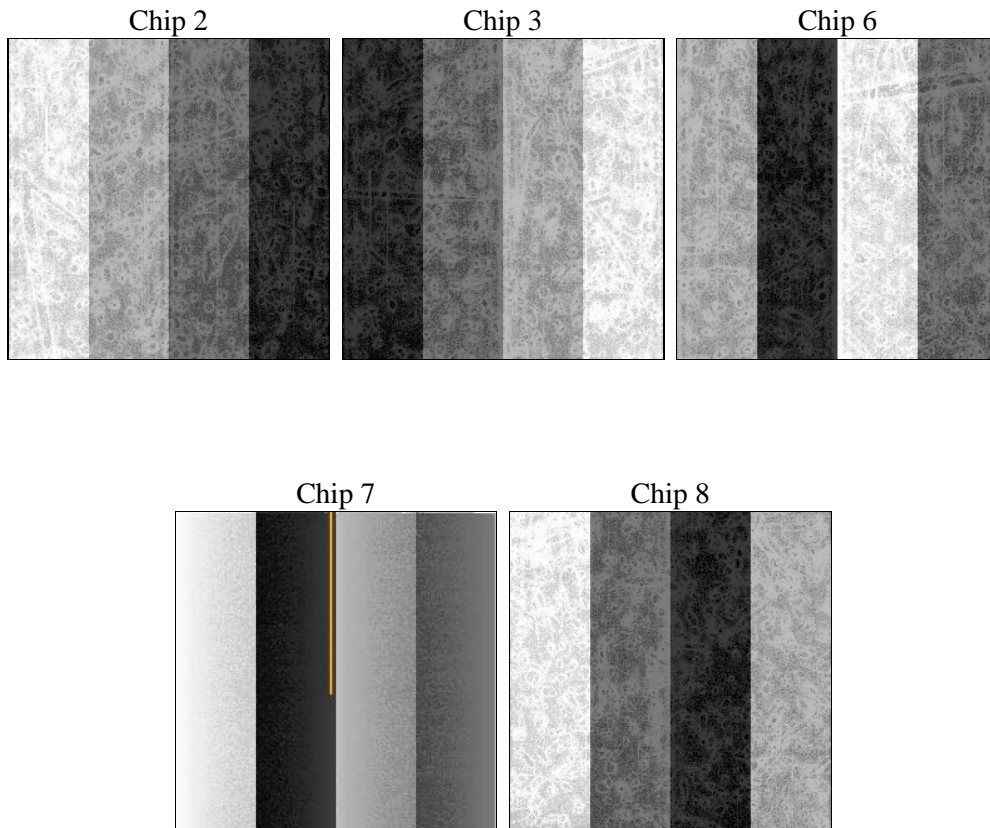
2 OBI

2.1 OBI

2.1.1 Images



2.1.2 Bias



2.1.3 Parameters

obi_num	0	Obi number	sched_exp_time	15000.000000	Scheduled observation exposure time
ascdsver	8.1.1	ASCDS version number	ontime	14165.394524507	Sum of GTIs [s]
caldbver	4.1.4	 	ontime2	14165.353484504	Sum of GTIs [s]
date	2009-11-26T06:26:54	Date and time of file creation	ontime3	14165.271404505	Sum of GTIs [s]
revision	4	Processing version of data	ontime6	14165.312444508	Sum of GTIs [s]
			ontime7	14165.394524507	Sum of GTIs [s]
			ontime8	14165.230364509	Sum of GTIs [s]
			l1events	672147	Number of level 1 events

2.1.4 Events

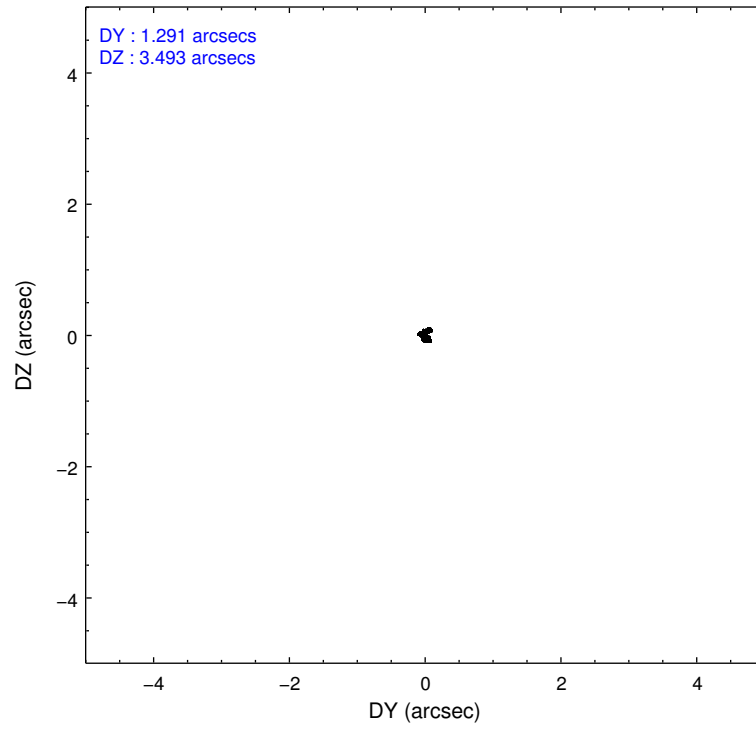
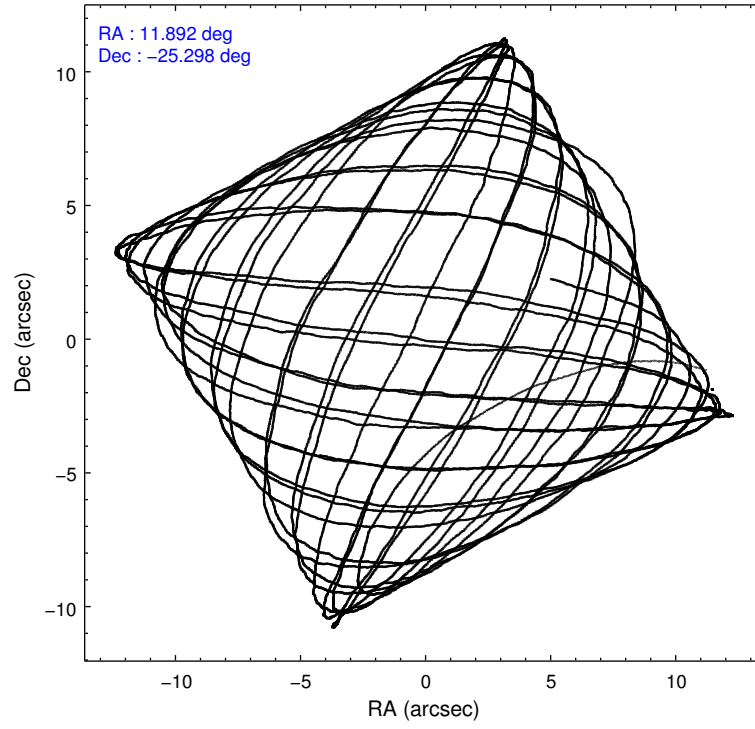
	ccd 2	ccd 3	ccd 6	ccd 7	ccd 8
level 1 events	123544	118618	125925	161019	143041
rejected events	112526	107310	113689	80605	118926
rejected %	91%	90%	90%	50%	83%

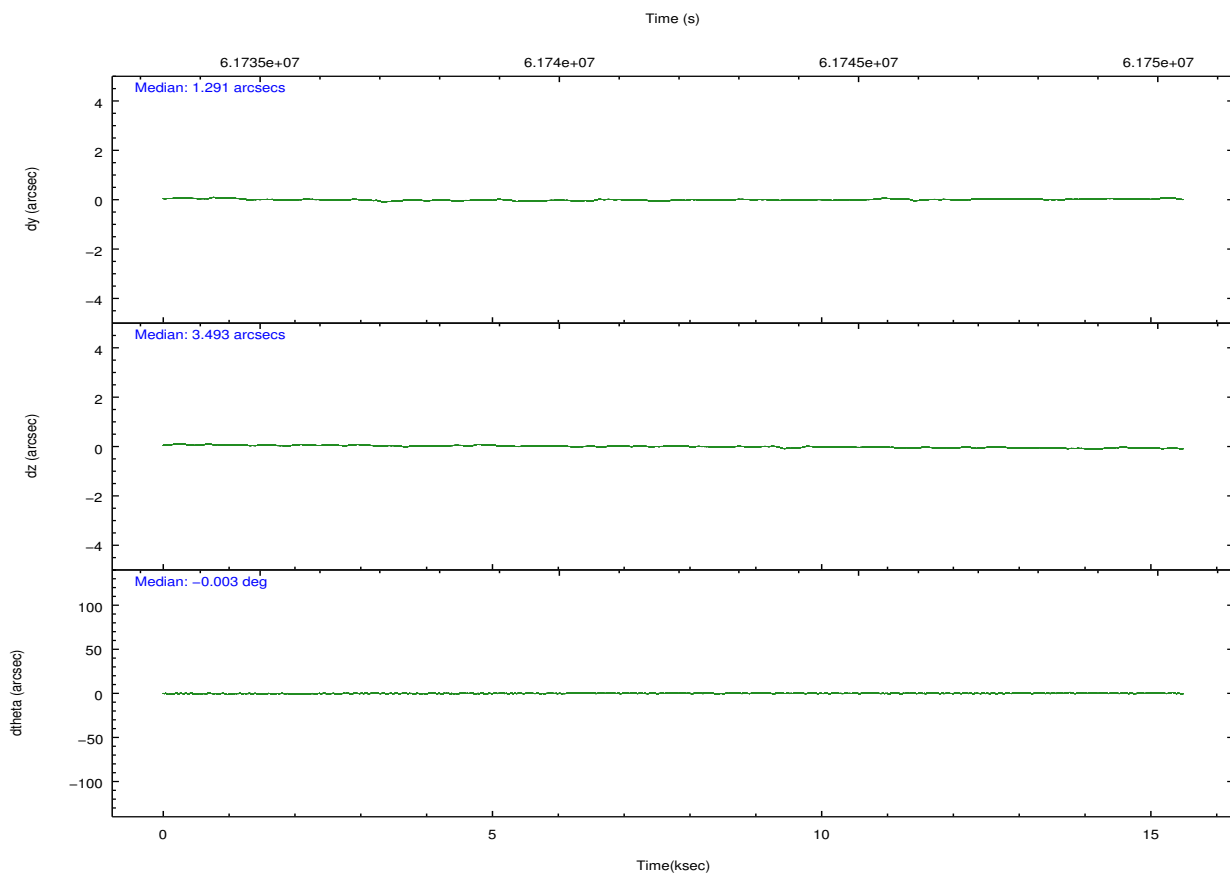
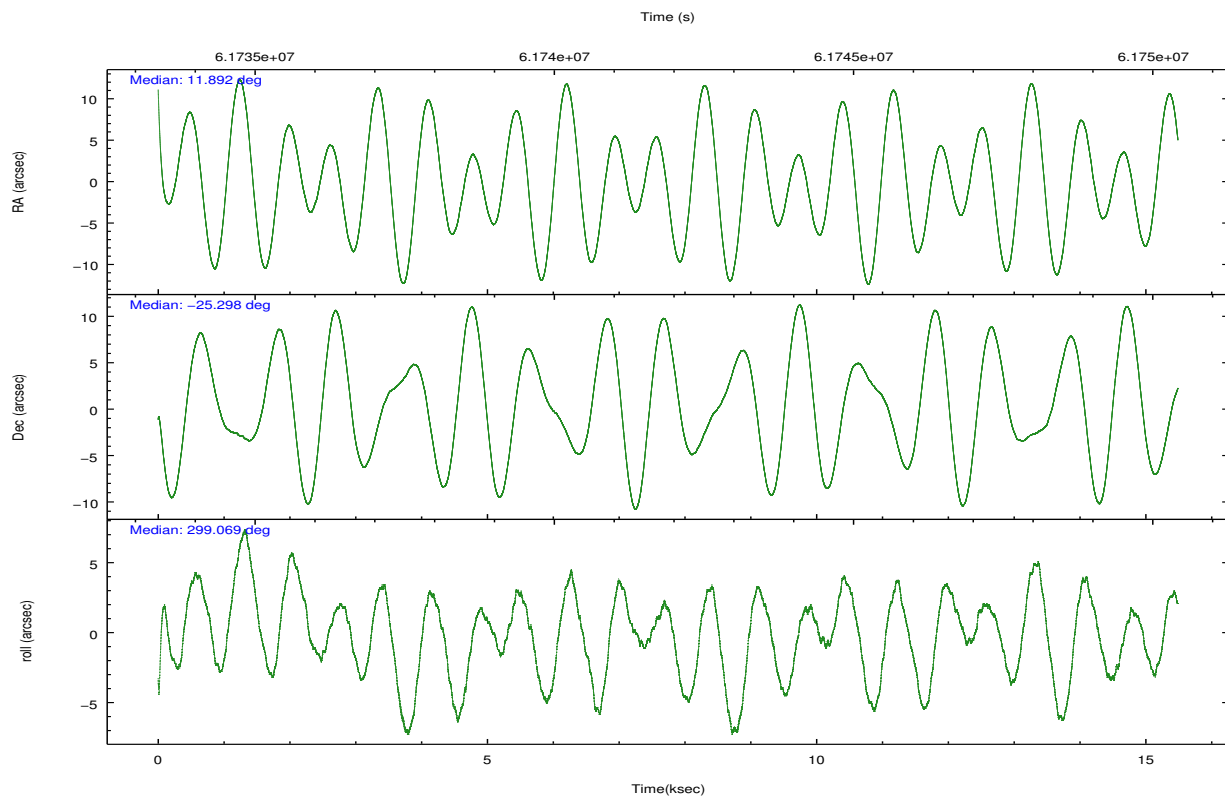
	ccd 2	ccd 3	ccd 6	ccd 7	ccd 8
grade 0 events	2463	2535	2707	11797	5842
	1%	2%	2%	7%	4%
grade 1 events	19	19	29	88	48
	0%	0%	0%	0%	0%
grade 2 events	4388	4540	4649	18157	7816
	3%	3%	3%	11%	5%
grade 3 events	746	737	773	6316	1954
	0%	0%	0%	3%	1%
grade 4 events	695	718	761	5801	1723
	0%	0%	0%	3%	1%
grade 5 events	2090	2297	2572	8074	3422
	1%	1%	2%	5%	2%
grade 6 events	2730	2781	3348	38358	6783
	2%	2%	2%	23%	4%
grade 7 events	110413	104991	111086	72428	115453
	89%	88%	88%	44%	80%

2.2 Compared Parameters

Parameter	Planned	Actual	Parameter	Planned	Actual
Instrument	ACIS	ACIS	Obspar format version number	6	6
Detector	ACIS-23678	ACIS-23678	Obspar file type	PREDICTED	ACTUAL
Grating	NONE	NONE	Obspar update status	NONE	UPDATED
Data mode	FAINT	FAINT	Number of optional ACIS chips dropped	0	0
Observation mode	POINTING	POINTING	On-chip summing requested	N	N
Pointing RA	11.865765	11.89189548707902	Subarray requested	NONE	NONE
Pointing Dec	-25.283521	-25.29777444482937	Alternating exposures requested	N	N
Pointing Roll	298.899212	299.066998422424	Primary exposure time	0.000000	3.2
SIM focus pos (mm)	-0.684267	-0.6828225247311905			
SIM defocus (mm)	0	0.001444936568705701			
SIM translation stage pos (mm)	-190.132523	-190.1400660498719			
SIM translation stage offset (mm)	0	0.00754346686406393			
Observation start time	61734642.184000	61733525.699399			
Observation start date	1999-12-16T12:29:38	1999-12-16T12:12:05			
Observation end time	61749642.184000	61750407.45001			
Observation end date	1999-12-16T16:39:38	1999-12-16T16:53:27			
Read mode	TIMED	TIMED			

2.3 Aspect



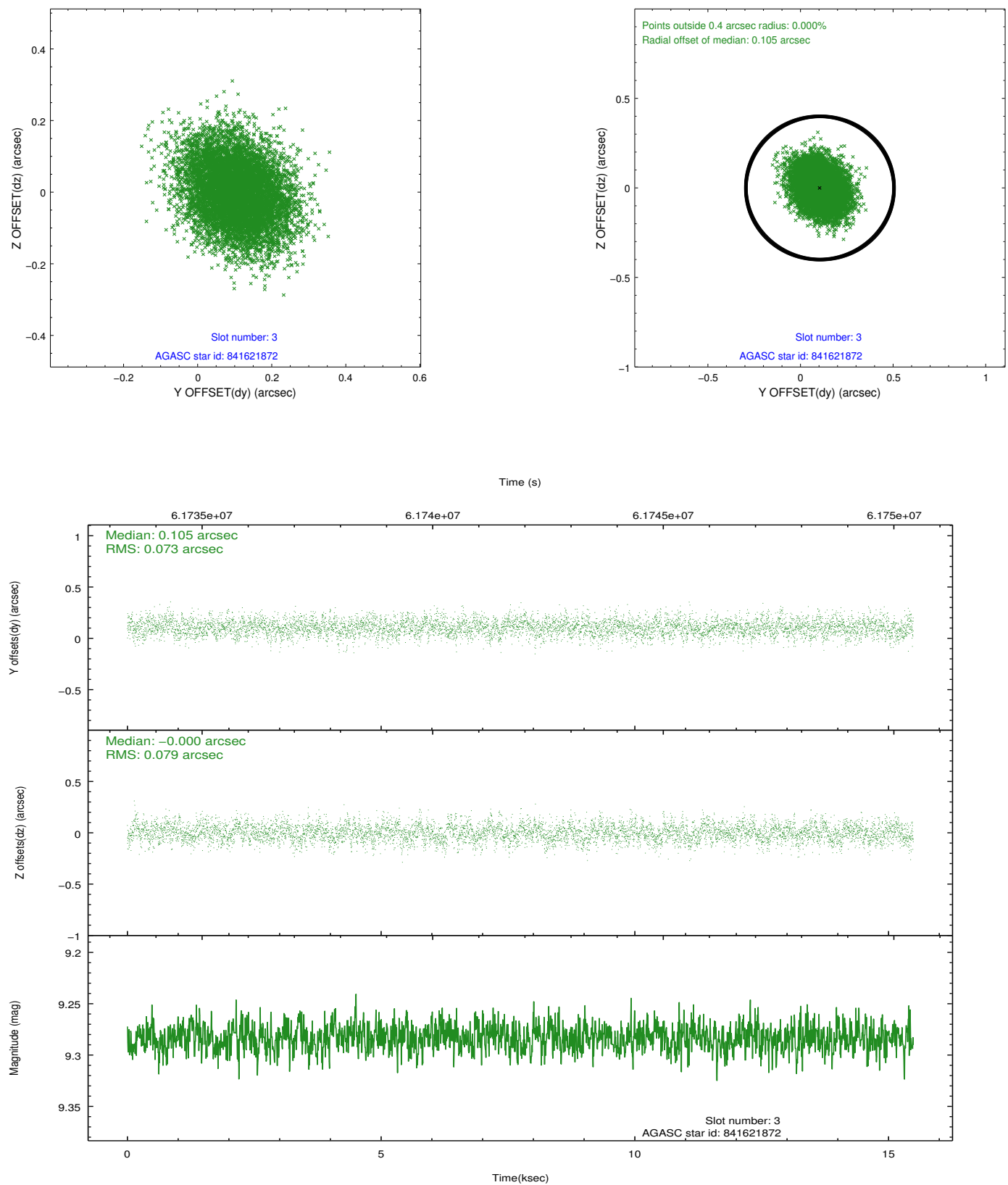


Slot Statistics

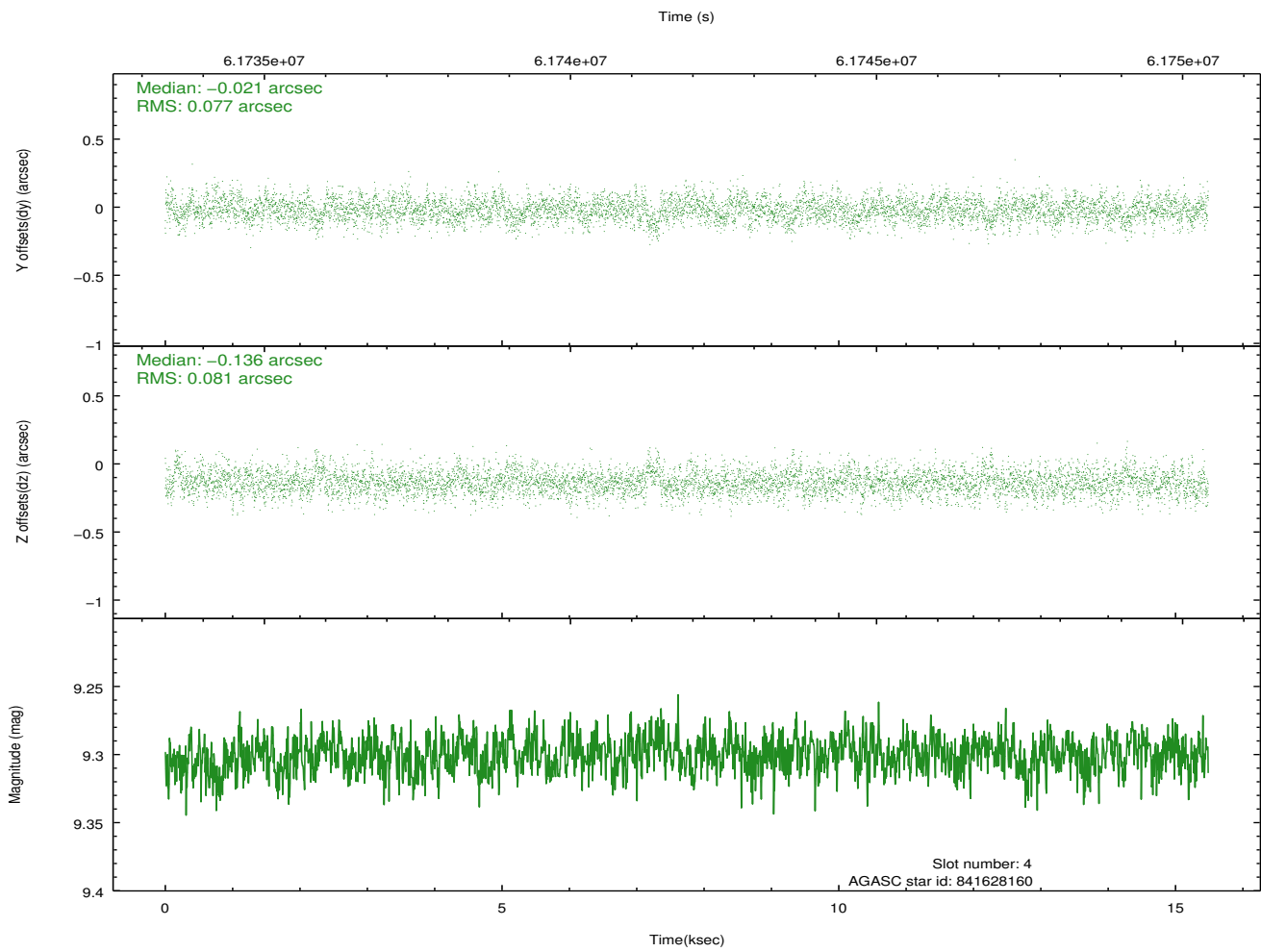
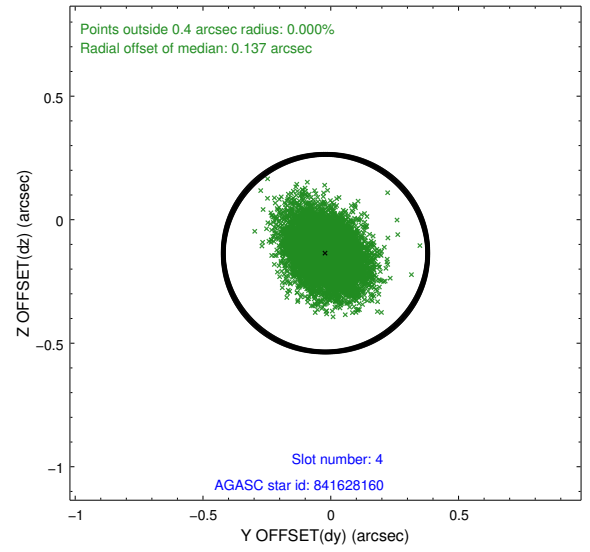
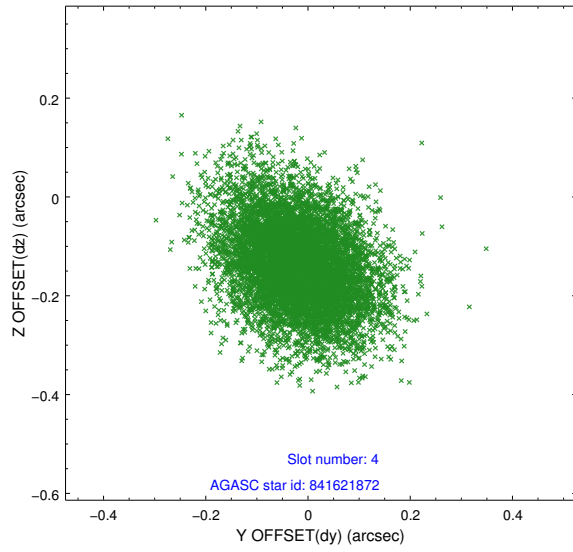
slot	status	id	mag	n_pts	med_dy	med_dz	dr1	dr2	ra	dec	mean_y	mean_z
0	FID	ACIS-S-2	7.13	7554	-0.001	-0.059	0.005	0.009	0.000000	0.000000	-753.93	-1724.60
1	FID	ACIS-S-4	7.22	7556	0.013	0.016	0.005	0.010	0.000000	0.000000	2159.38	183.82
2	FID	ACIS-S-5	7.26	7556	-0.043	0.052	0.006	0.010	0.000000	0.000000	-1806.68	177.70
3	GUIDE	841621872	9.28	7550	0.105	-0.000	0.113	0.189	12.339829	-25.439870	1239.26	1075.32
4	GUIDE	841628160	9.30	7553	-0.021	-0.136	0.118	0.197	11.565969	-25.537708	330.74	-1295.88
5	GUIDE	841628720	10.13	7552	-0.110	0.102	0.196	0.318	12.026146	-24.623502	-1827.14	1607.11
6	GUIDE	841625328	10.69	7390	0.235	0.101	0.291	0.515	12.150623	-25.891705	2362.55	-251.27
7	GUIDE	841617976	10.04	7546	-0.204	-0.063	0.171	0.272	11.278753	-24.919766	-2069.74	-1047.65

2.4 Star Slots

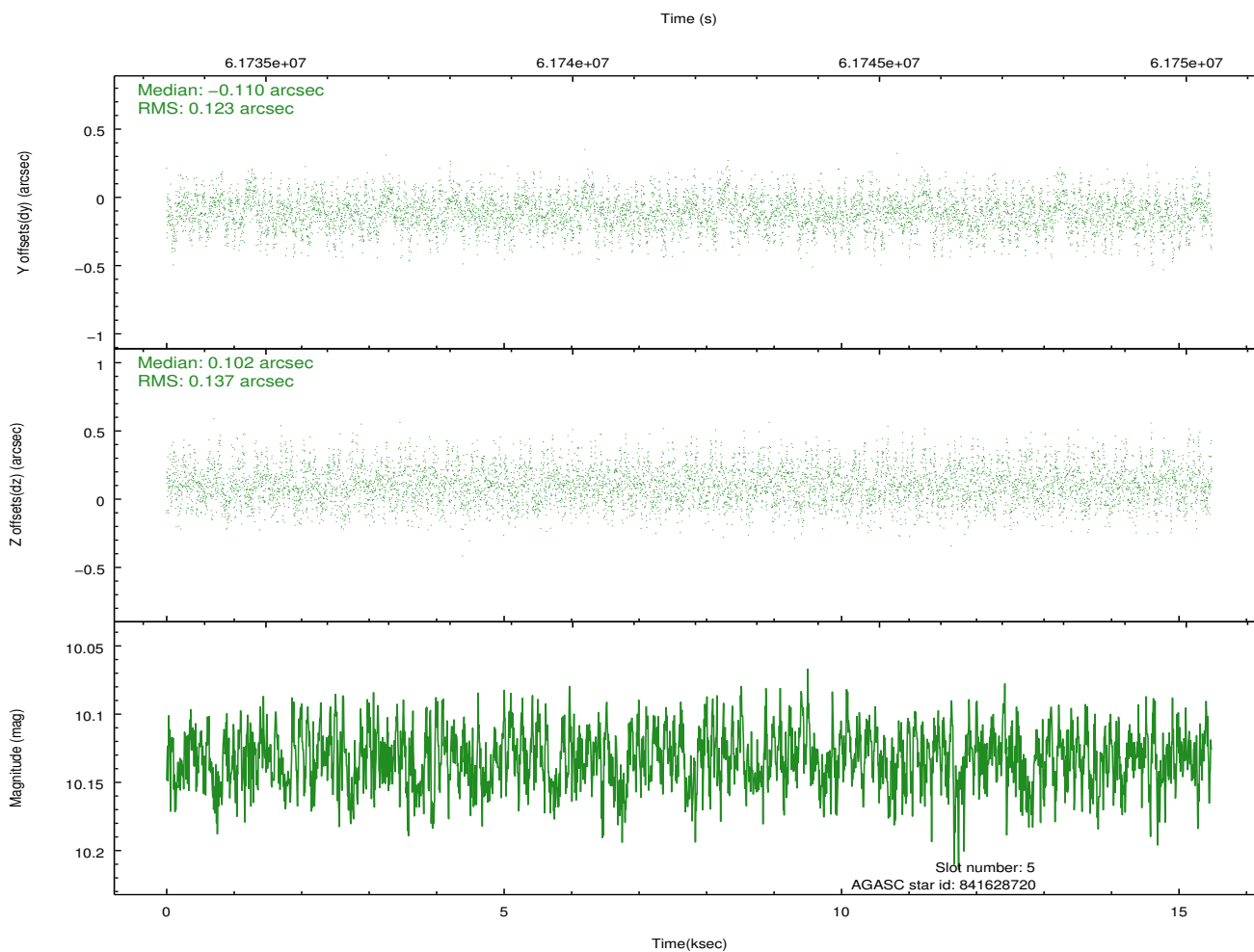
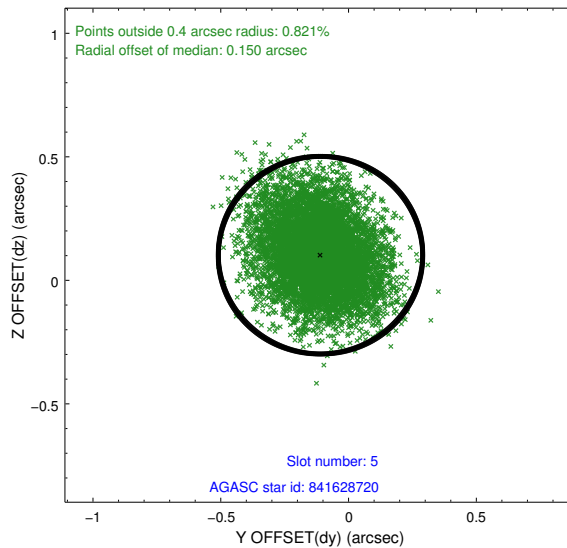
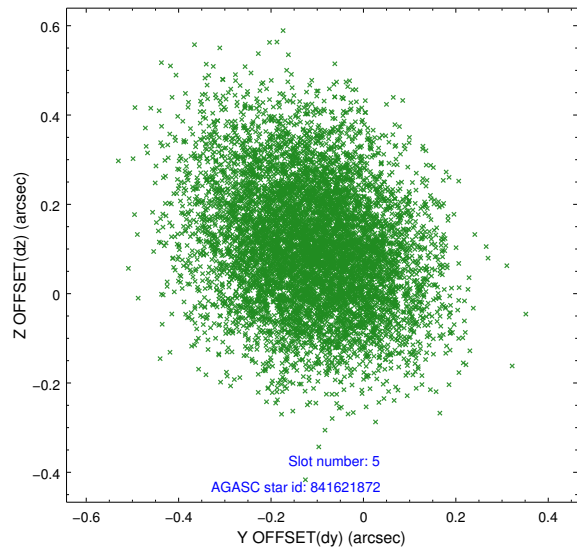
2.4.1 Slot 3



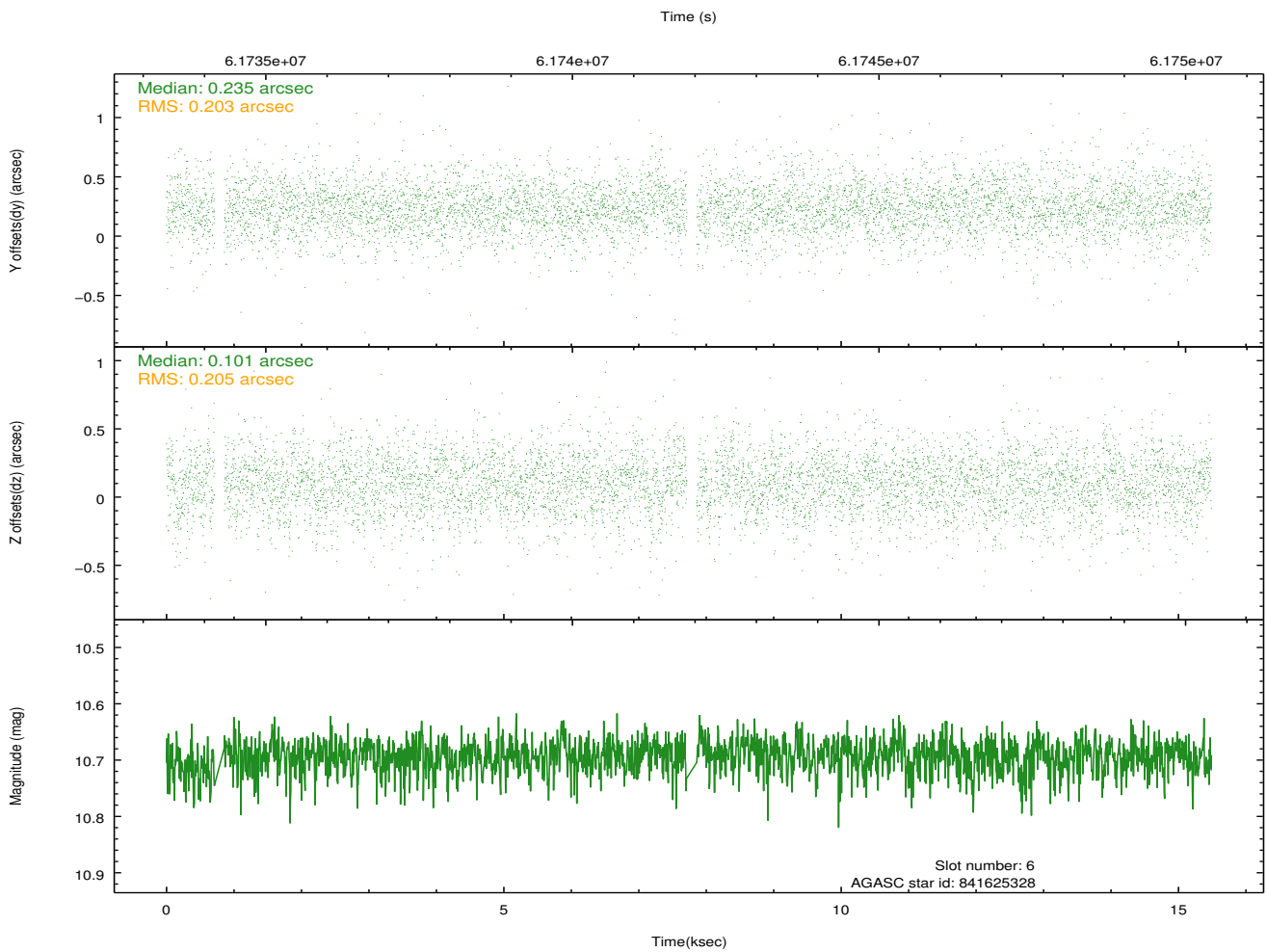
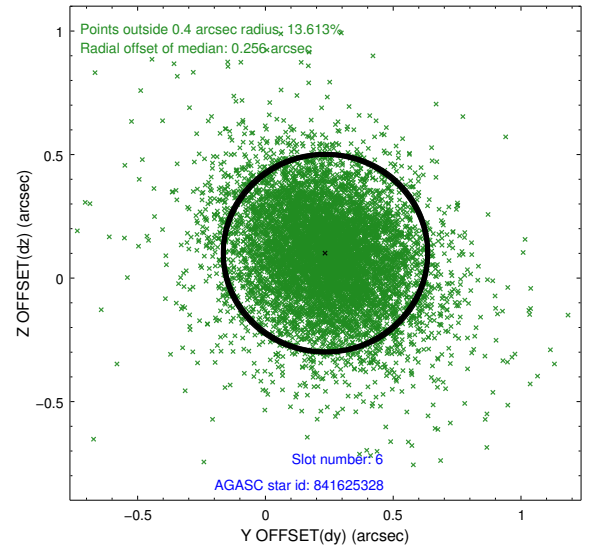
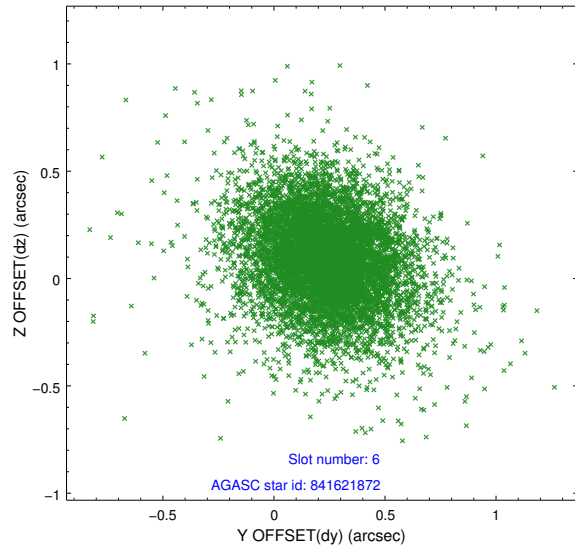
2.4.2 Slot 4



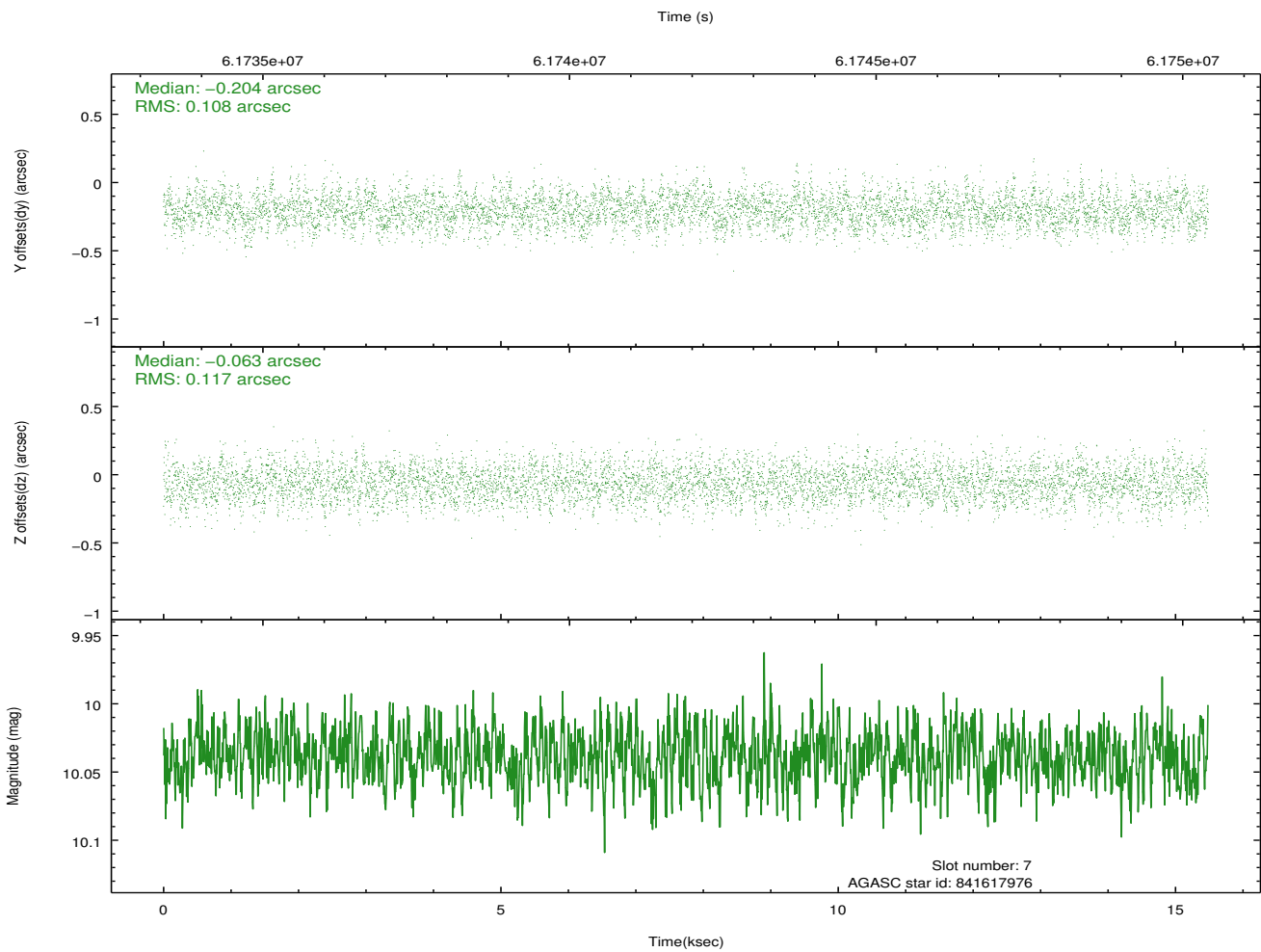
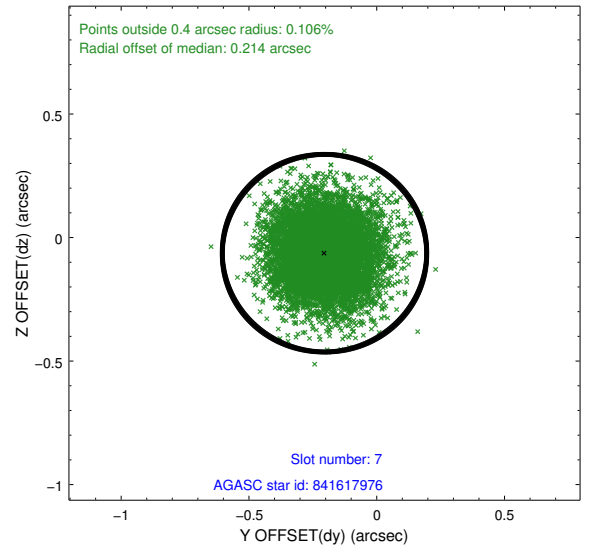
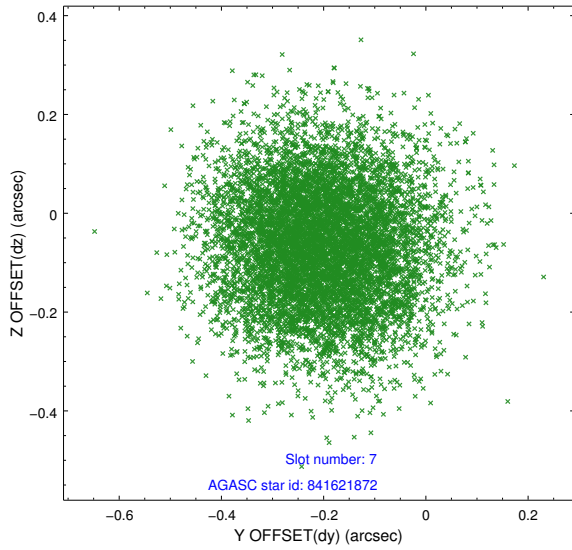
2.4.3 Slot 5



2.4.4 Slot 6

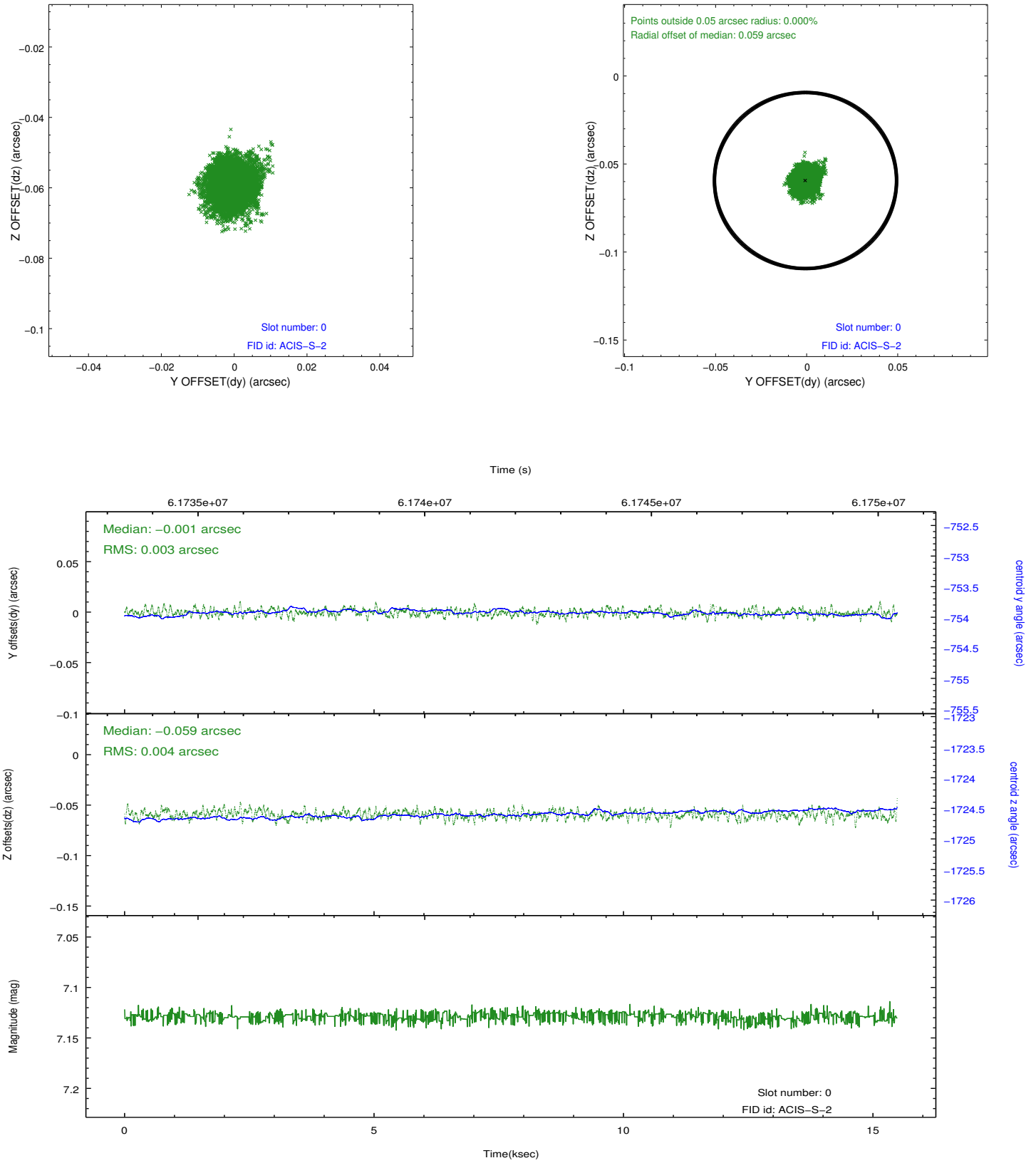


2.4.5 Slot 7

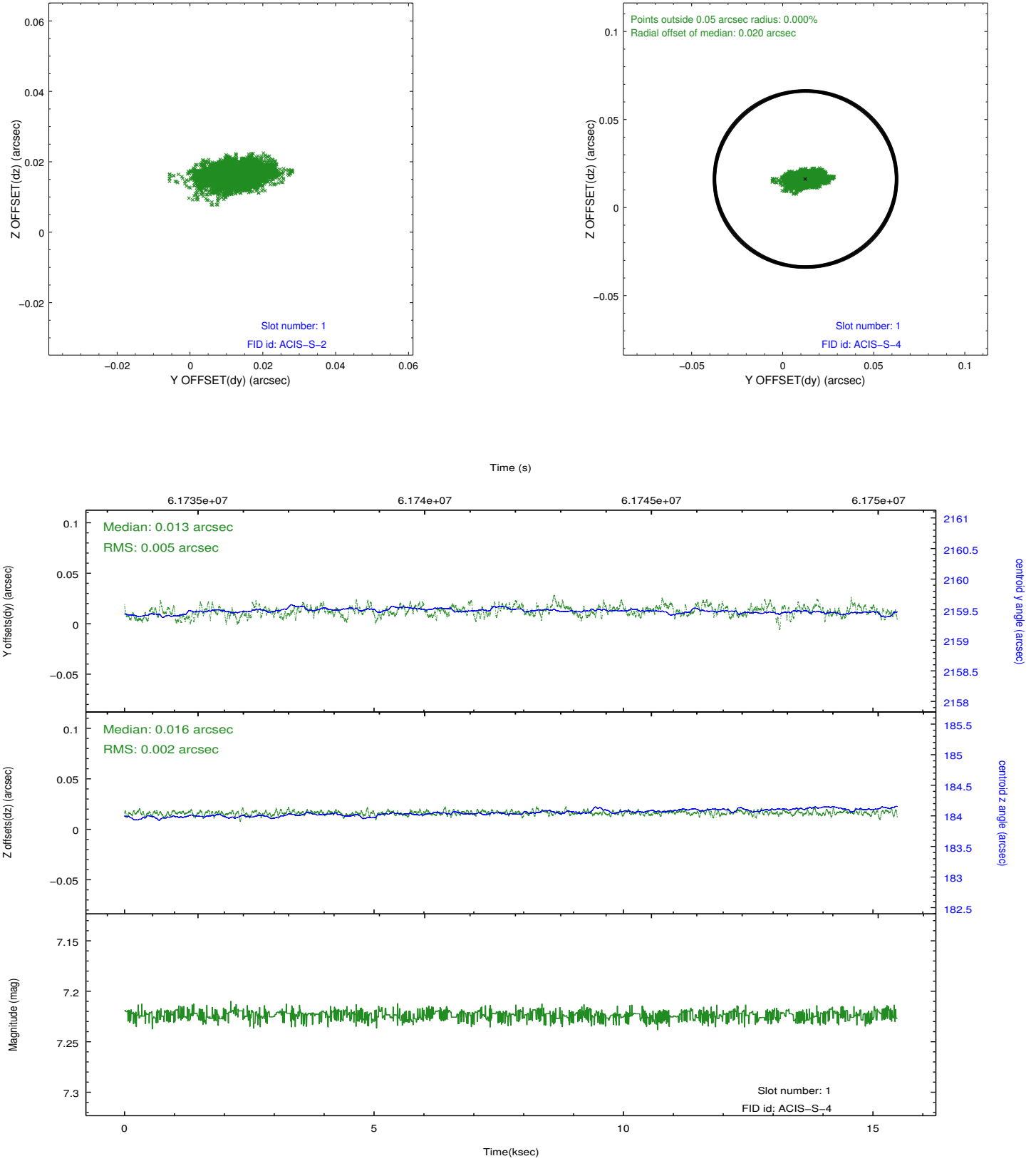


2.5 FID Slots

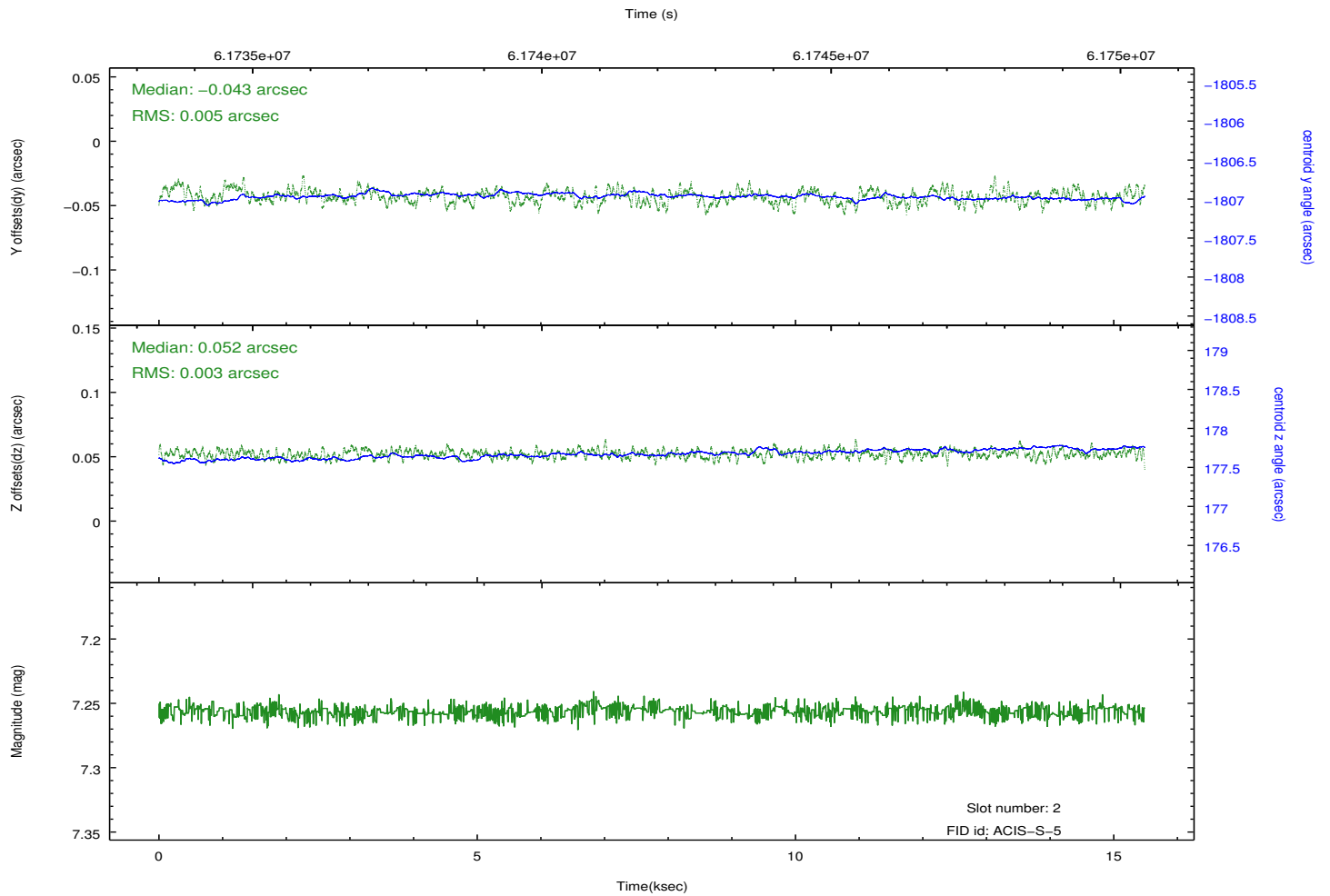
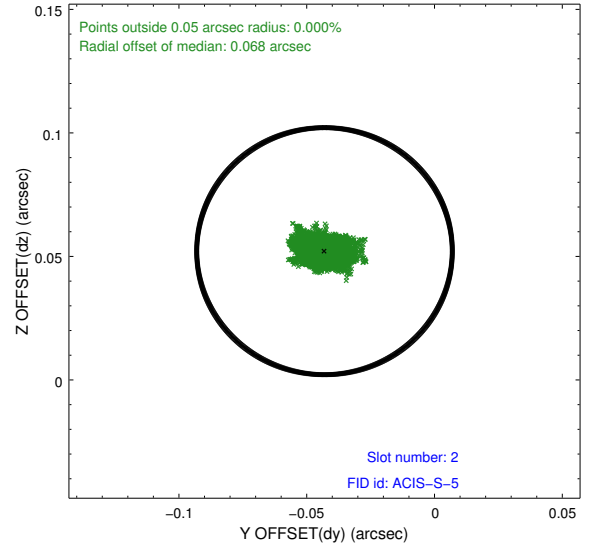
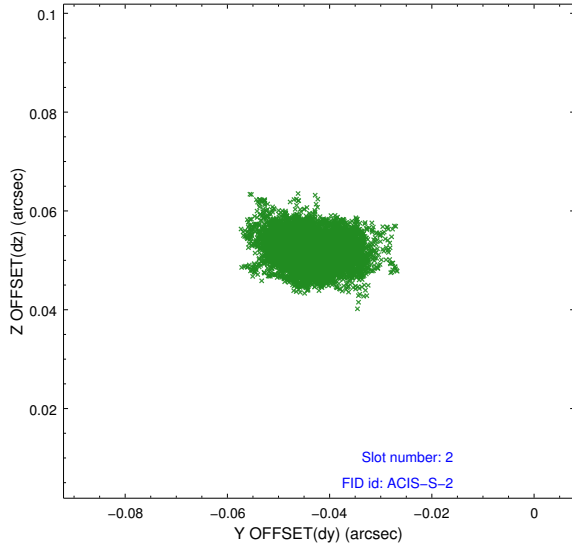
2.5.1 Slot 0



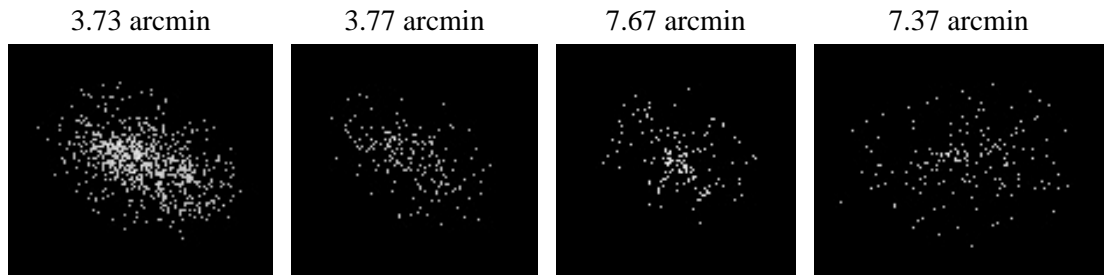
2.5.2 Slot 1



2.5.3 Slot 2



3 Point Sources



A Summary

A.1 Status

V&V Scientist	Beth Sundheim
V&V Date (YYYY-MM-DD)	2009.12.07
V&V Edition	1
V&V Disposition and Status	OK
V&V Charge Time	14.1504

A.2 Comments

Charge time for this observation remains at previous value of 14.1504 ksec, although with the current processing the charge time would have been 14.165 ksec.

==

Focal plane temperature is warmer than -118.7 C degrees during the entire observation. This temperature is the upper limit of the verified ACIS calibration for the front-illuminated chips. The focal plane temperature is also warmer than -116.7 degrees C for the entire observation. This temperature is the upper limit of the verified ACIS calibration for the back-illuminated chips. The ACIS spectral response calibration is less accurate at these warmer temperatures than it is at -119.7 C. Users whose science objectives depend on the most accurate spectral response (ie: fitting line-rich spectra) may notice an effect. Users whose science objectives do not depend on the most accurate spectral response should not notice an effect.