

V&V Reference Report

L2 ASCDS Version : 8.4.4

Observation 9759 - L2 Version 4
Chandra X-Ray Center

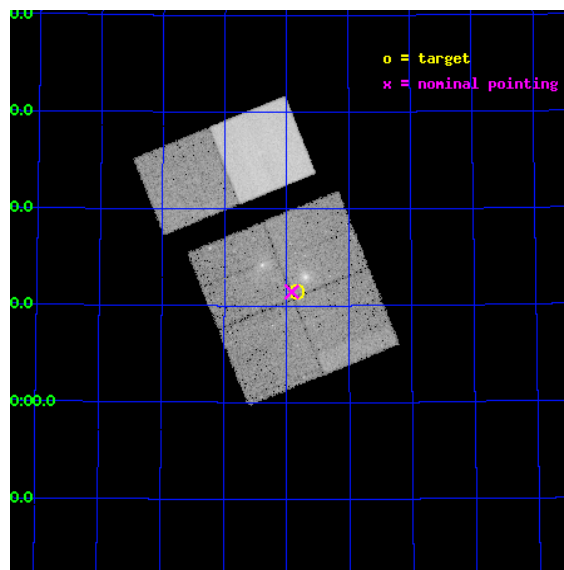
L2 Processing Date : May 4 2012

Contents

1	Front	2
2	OBI	3
2.1	OBI	3
2.1.1	Images	3
2.1.2	Bias	3
2.1.3	Parameters	4
2.1.4	Events	4
2.2	Compared Parameters	5
2.3	Aspect	6
2.4	Star Slots	9
2.4.1	Slot 3	9
2.4.2	Slot 4	10
2.4.3	Slot 5	11
2.4.4	Slot 6	12
2.4.5	Slot 7	13
2.5	FID Slots	14
2.5.1	Slot 0	14
2.5.2	Slot 1	15
2.5.3	Slot 2	16
A	Summary	17
A.1	Status	17
A.2	Comments	17

1 Front

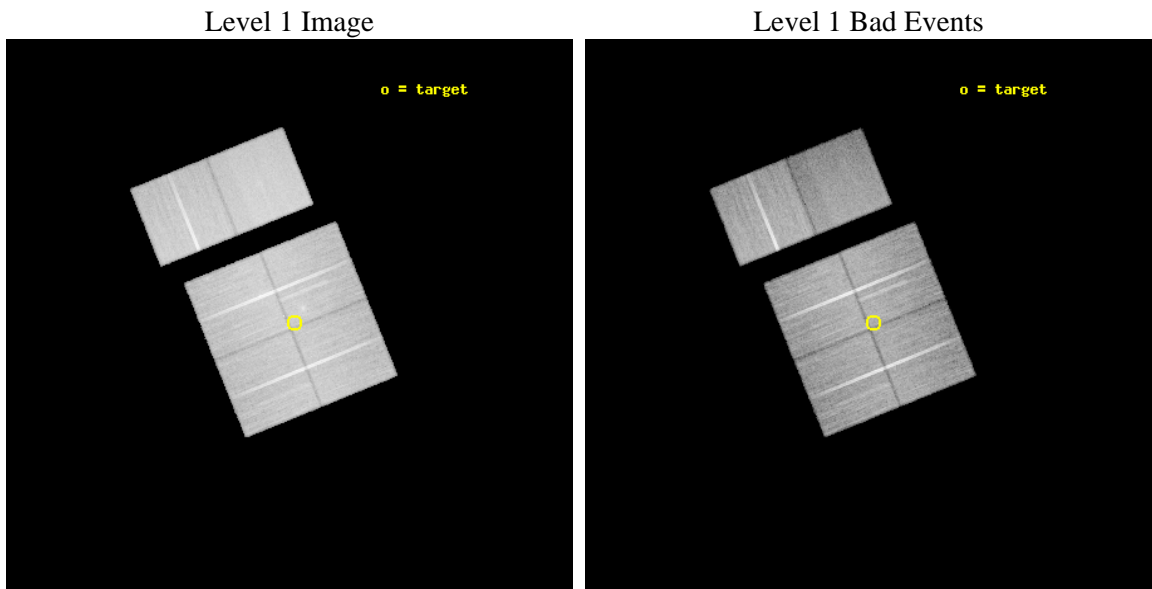
seq_num	900576	Sequence number
obs_id	9759	Observation id
title	AGN in the Cosmic Web: A Proto-Cluster at z=2.3	Proposal title
observer	Professor Kirpal Nandra	Principal investigator
object	HS 1700+643	Source name
dtcycle	0	
cycle	P	events from which exps? Prim/Second/Both
ra_targ	255.210833	Observer's specified target RA [deg]
dec_targ	64.191417	Observer's specified target Dec [deg]
ra_nom	255.22930040505	Nominal RA [deg]
dec_nom	64.19076201093	Nominal Dec [deg]
roll_nom	337.9920650357	Nominal Roll [deg]
revision	4	Processing version of data
ontime	31587.158882141	Sum of GTIs [s]
livetime	31187.183256872	Livetime [s]
ontime0	31587.158922076	Sum of GTIs [s]
ontime1	31583.918051183	Sum of GTIs [s]
ontime2	31587.158902049	Sum of GTIs [s]
ontime3	31587.158882141	Sum of GTIs [s]
ontime6	31590.399882376	Sum of GTIs [s]
ontime7	31590.399882376	Sum of GTIs [s]
l2events	235068	Number of level 2 events



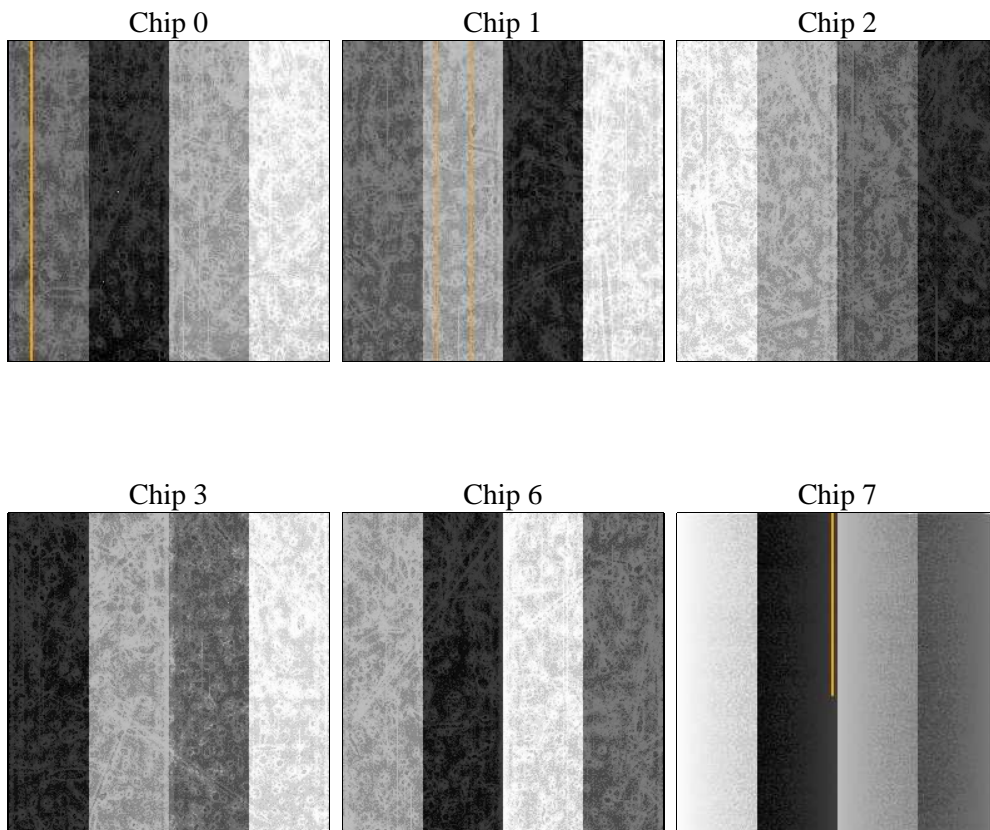
2 OBI

2.1 OBI

2.1.1 Images



2.1.2 Bias



2.1.3 Parameters

obi_num	0	Obi number	sched_exp_time	31500.000000	[s] Scheduled observation exposure time
ascdsver	8.4.4	Processing system revision	ontime	31587.158882141	Sum of GTIs [s]
caldbver	4.4.9	 	ontime0	31587.158922076	Sum of GTIs [s]
date	2012-05-04T14:26:01	Date and time of file creation	ontime1	31583.918051183	Sum of GTIs [s]
revision	4	Processing version of data	ontime2	31587.158902049	Sum of GTIs [s]
			ontime3	31587.158882141	Sum of GTIs [s]
			ontime6	31590.399882376	Sum of GTIs [s]
			ontime7	31590.399882376	Sum of GTIs [s]
			l1events	1516574	Number of level 1 events

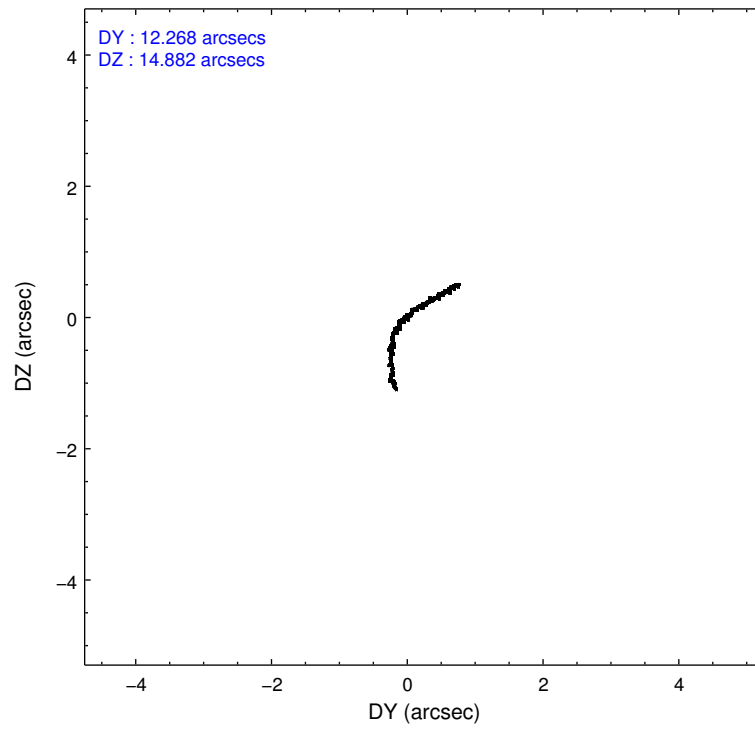
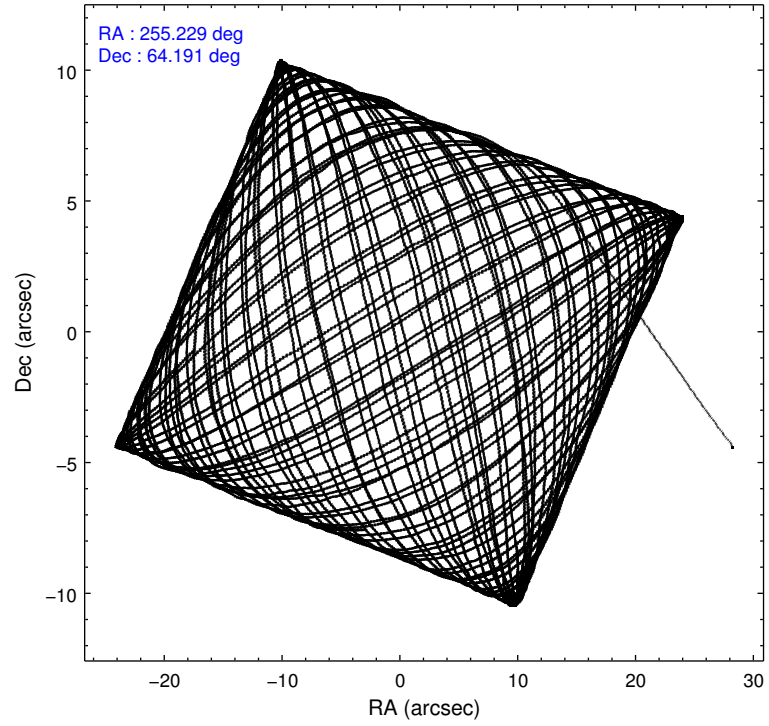
2.1.4 Events

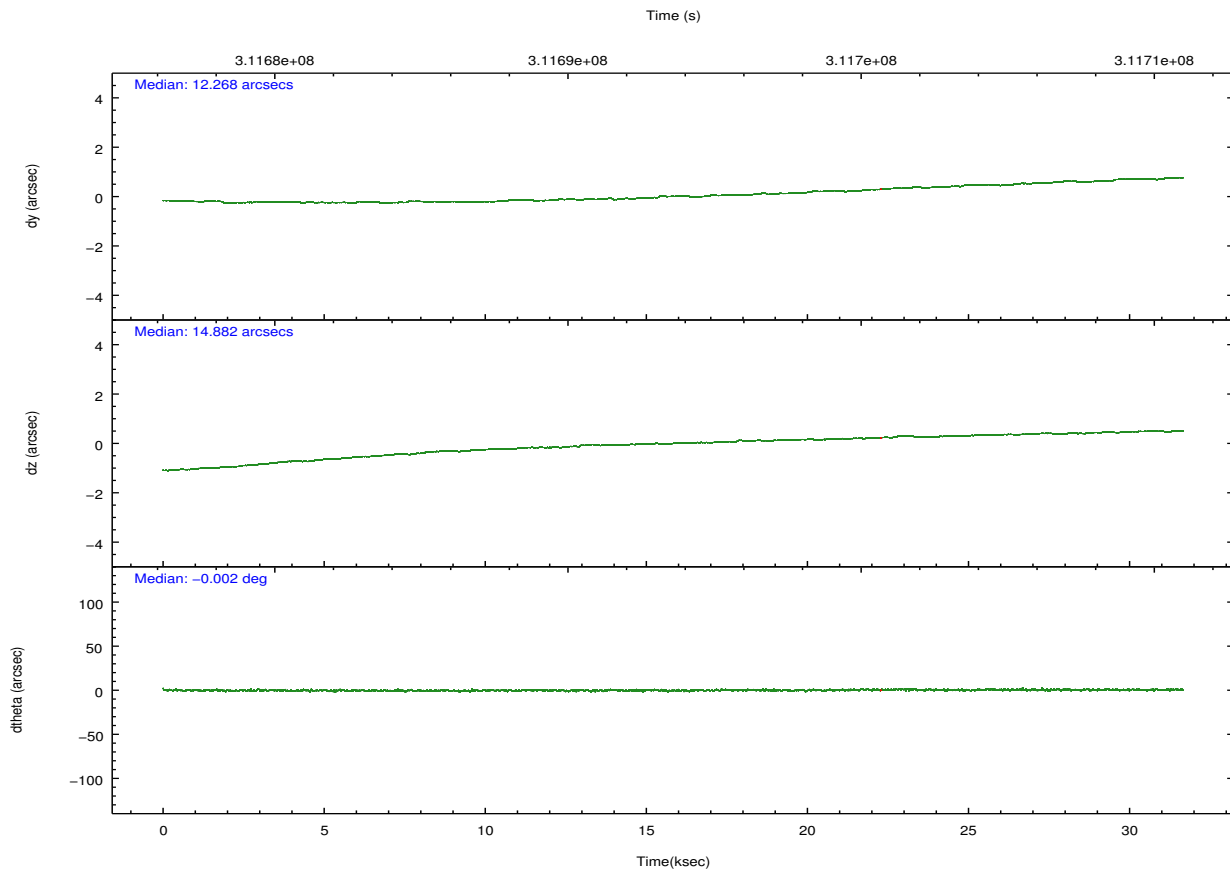
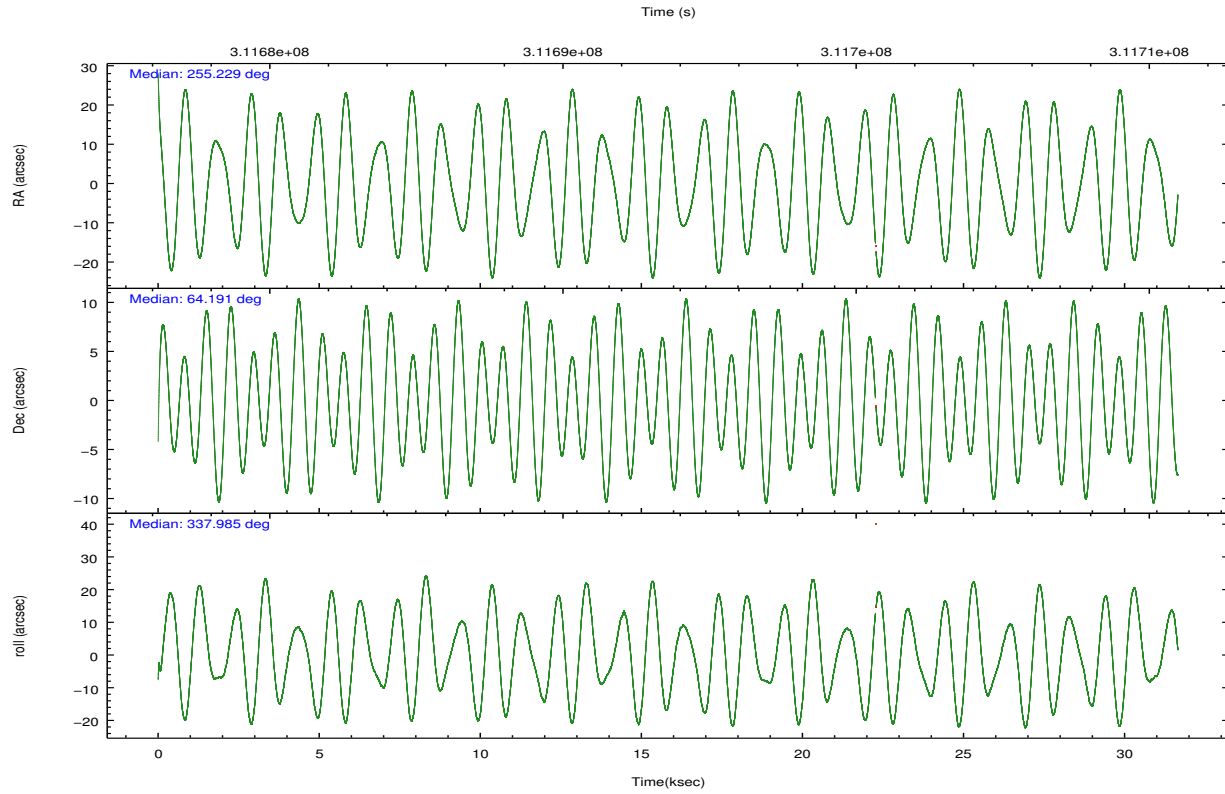
	ccd 0	ccd 1	ccd 2	ccd 3	ccd 6	ccd 7		ccd 0	ccd 1	ccd 2	ccd 3	ccd 6	ccd 7
level 1 events	232971	228620	266335	248393	257949	282306	grade 0 events	8547	10088	10875	10655	9219	12379
rejected events	208545	200803	239519	221942	231492	153523		3%	4%	4%	4%	3%	4%
rejected %	89%	87%	89%	89%	89%	54%	grade 1 events	132	118	146	168	148	339
								0%	0%	0%	0%	0%	0%
							grade 2 events	5971	6260	5980	5383	5849	26150
								2%	2%	2%	2%	2%	9%
							grade 3 events	2699	3048	2708	2741	2769	11718
								1%	1%	1%	1%	1%	4%
							grade 4 events	2562	2935	2757	2725	2818	11944
								1%	1%	1%	1%	1%	4%
							grade 5 events	8408	9350	8033	10008	10407	29938
								3%	4%	3%	4%	4%	10%
							grade 6 events	4686	5555	4537	4996	5853	66820
								2%	2%	1%	2%	2%	23%
							grade 7 events	199966	191266	231299	211717	220886	123018
								85%	83%	86%	85%	85%	43%

2.2 Compared Parameters

Parameter	Planned	Actual	Parameter	Planned	Actual
Instrument	ACIS	ACIS	Obspar format version number	7	7
Detector	ACIS-012367	ACIS-012367	Obspar file type	PREDICTED	ACTUAL
Grating	NONE	NONE	Obspar update status	OVERRIDE	OVERRIDE
Data mode	VFAINT	VFAINT	Number of optional ACIS chips dropped	0	0
Observation mode	POINTING	POINTING	On-chip summing requested	N	N
[deg] Pointing RA	255.2293005367598	255.2293004050489	Subarray requested	NONE	NONE
[deg] Pointing Dec	64.19076185389376	64.1907620109296	Alternating exposures requested	N	N
[deg] Pointing Roll	337.99206491259	337.9920650357045	[s] Primary exposure time	3.2	3.2
[mm] SIM focus pos	-0.7809083437167272	-0.7809083437167272			
[mm] SIM defocus	0.001439854621705816	0.001439854621705816			
[mm] SIM translation stage pos	-233.5874344608287	-233.5874344608287			
[mm] SIM translation stage offset	-0.005028630603106876	-0.005028630603106876			
[s] Observation start time (MET)	311677761.604021	311677761.604021			
Observation start date	2007-11-17T09:10:50	2007-11-17T09:09:21			
[s] Observation end time (MET)	311709416.680551	311709416.680551			
Observation end date	2007-11-17T17:55:50	2007-11-17T17:56:56			
Read mode	TIMED	TIMED			

2.3 Aspect



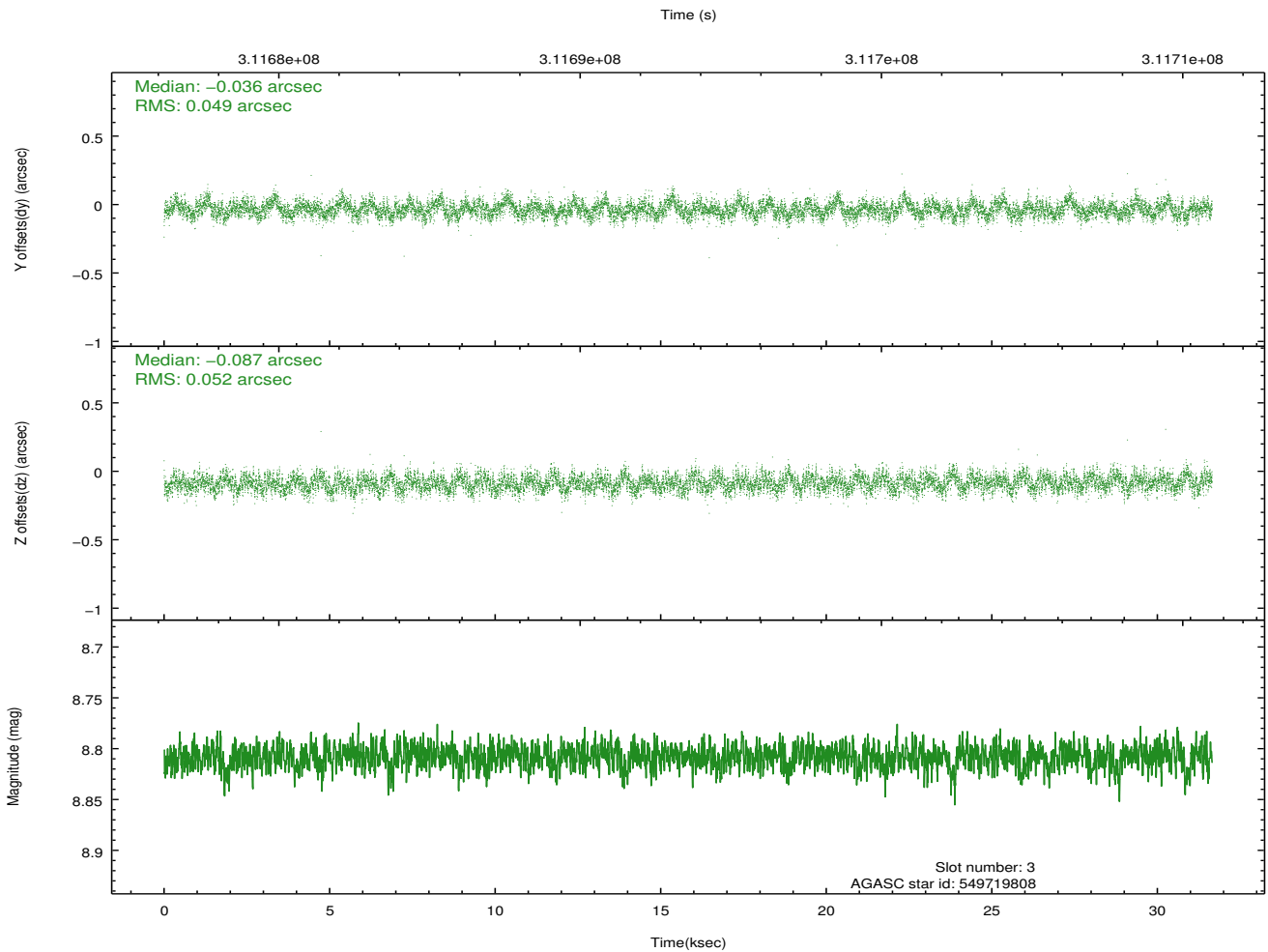
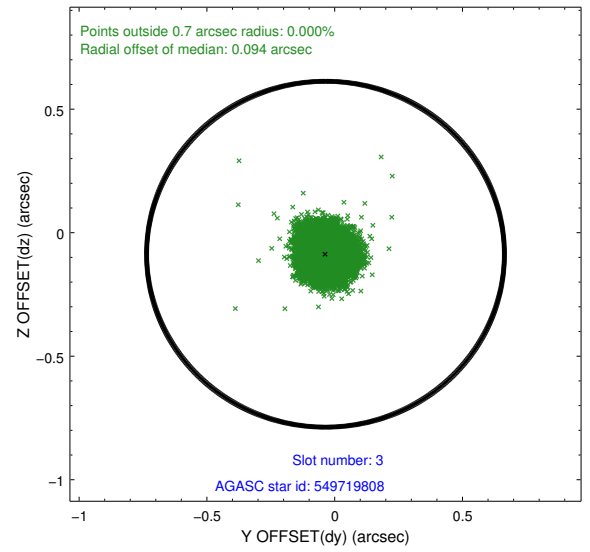
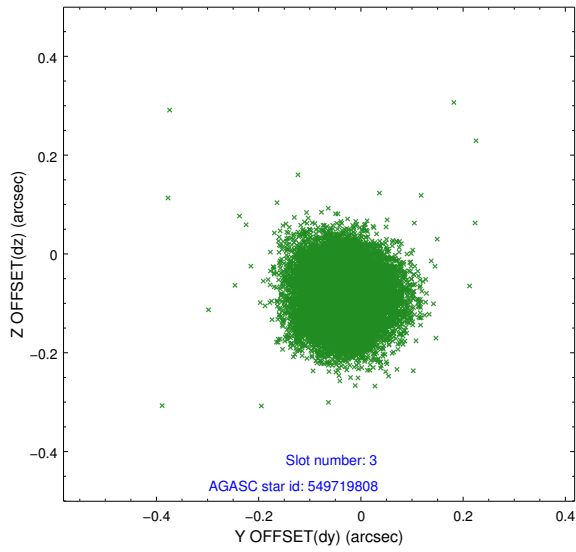


Slot Statistics

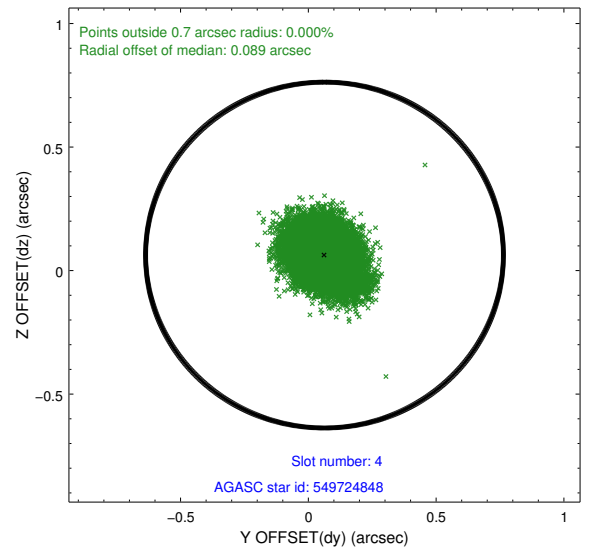
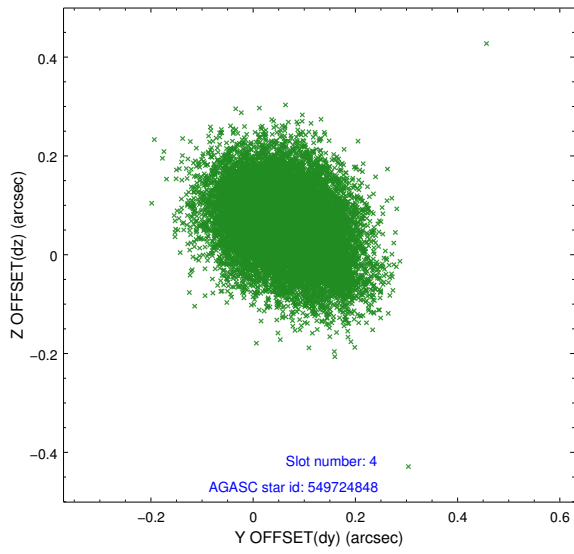
slot	status	id	mag	n_pts	med_dy	med_dz	dr1	dr2	ra	dec	mean_y	mean_z
0	FID	ACIS-I-1	7.23	7715	-0.018	0.009	0.027	0.042	0.000000	0.000000	927.15	-838.37
1	FID	ACIS-I-4	7.16	7712	0.167	0.026	0.018	0.027	0.000000	0.000000	2147.42	1061.41
2	FID	ACIS-I-5	7.22	7717	-0.247	0.036	0.015	0.024	0.000000	0.000000	-1821.00	1059.36
3	GUIDE	549719808	8.81	15429	-0.036	-0.087	0.077	0.120	255.292775	64.694097	-509.18	1764.70
4	GUIDE	549724848	9.55	15422	0.063	0.063	0.105	0.172	255.389284	63.950133	647.50	-655.38
5	GUIDE	549726784	8.97	15422	0.003	0.014	0.090	0.146	255.680869	64.026795	967.22	-224.45
6	GUIDE	549726944	8.19	15429	-0.039	-0.199	0.082	0.134	254.598381	64.304516	-983.22	61.40
7	GUIDE	549728568	9.33	15411	0.011	0.219	0.101	0.164	253.813006	64.122814	-1890.91	-994.53

2.4 Star Slots

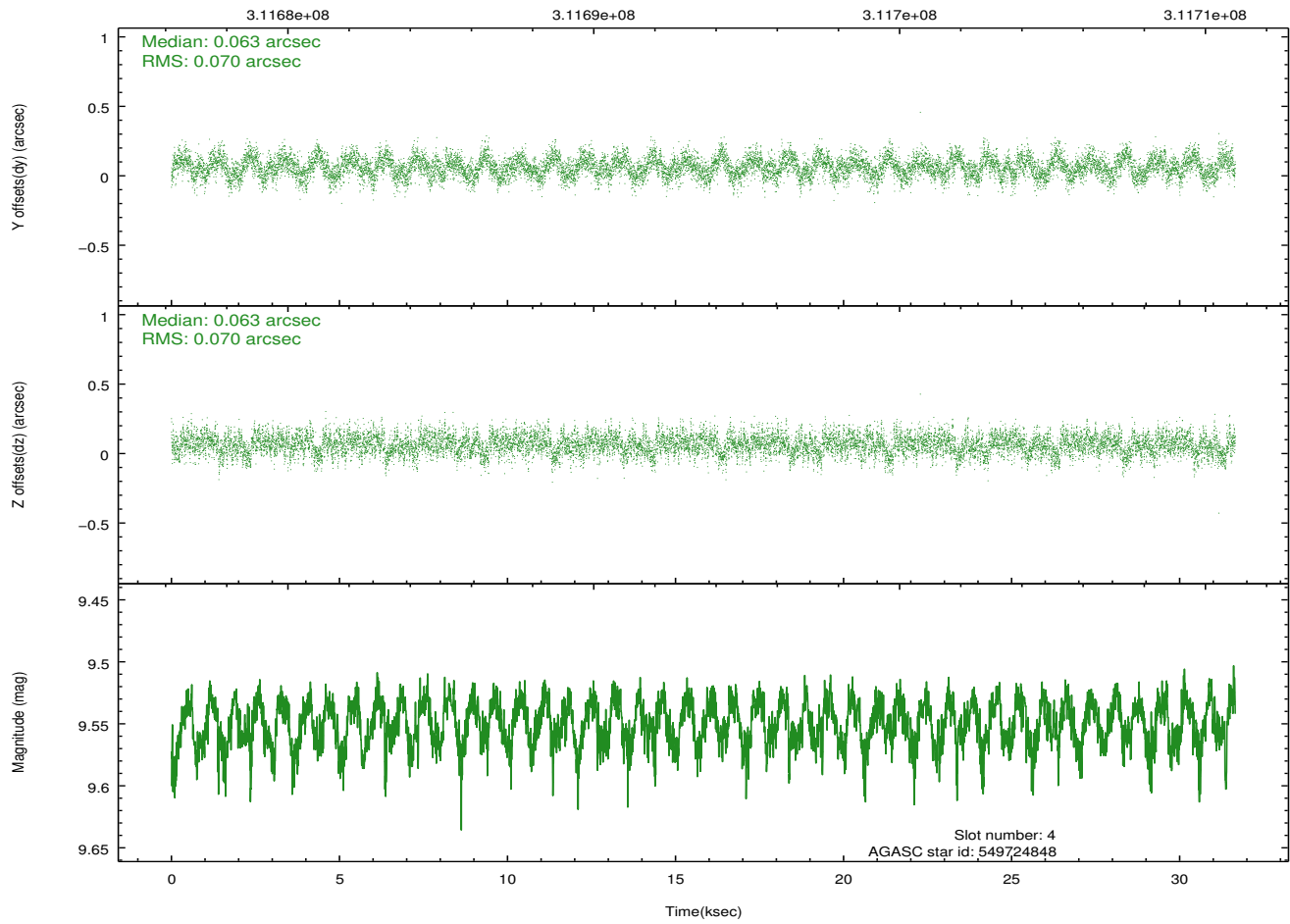
2.4.1 Slot 3



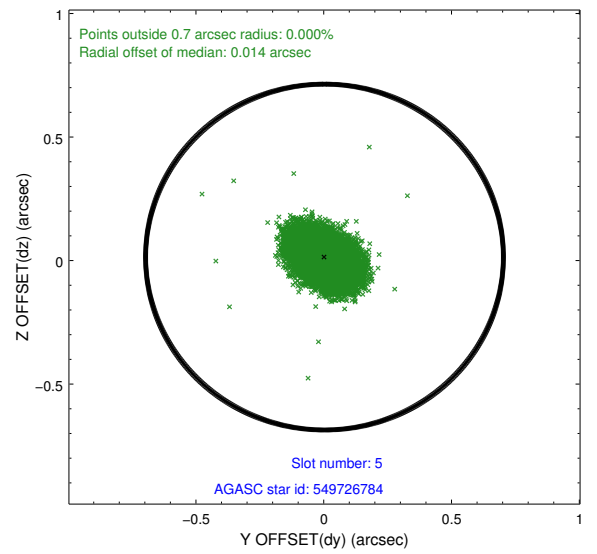
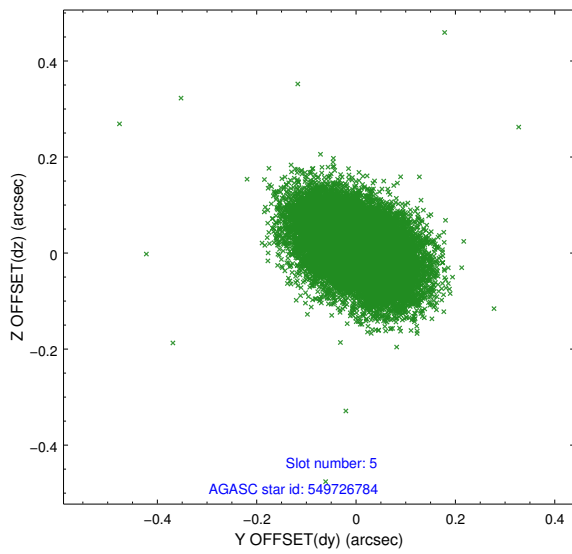
2.4.2 Slot 4



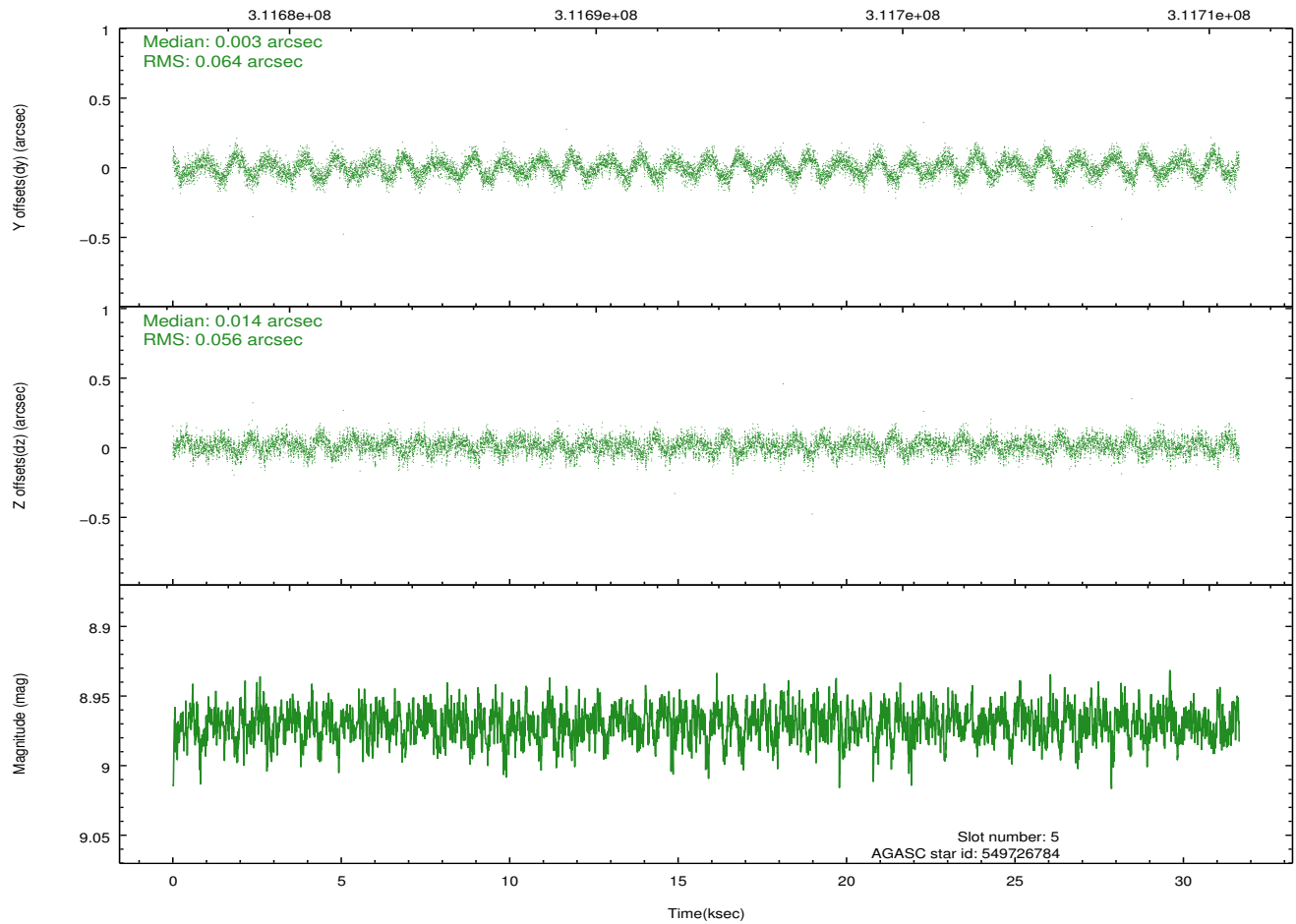
Time (s)



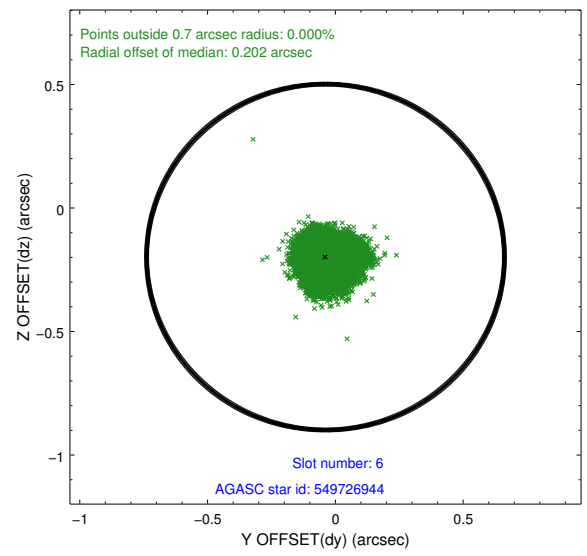
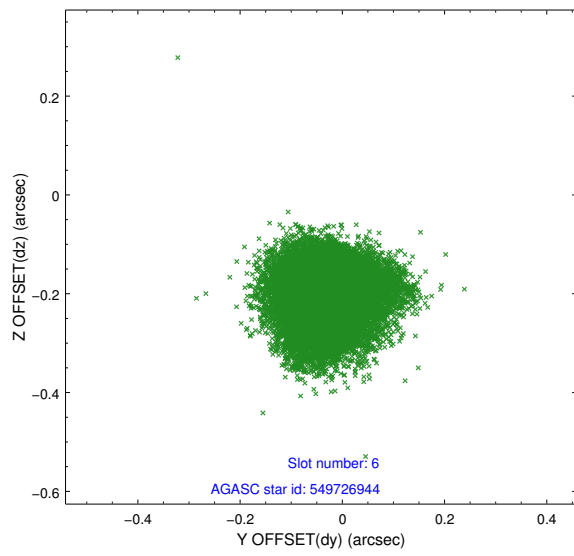
2.4.3 Slot 5



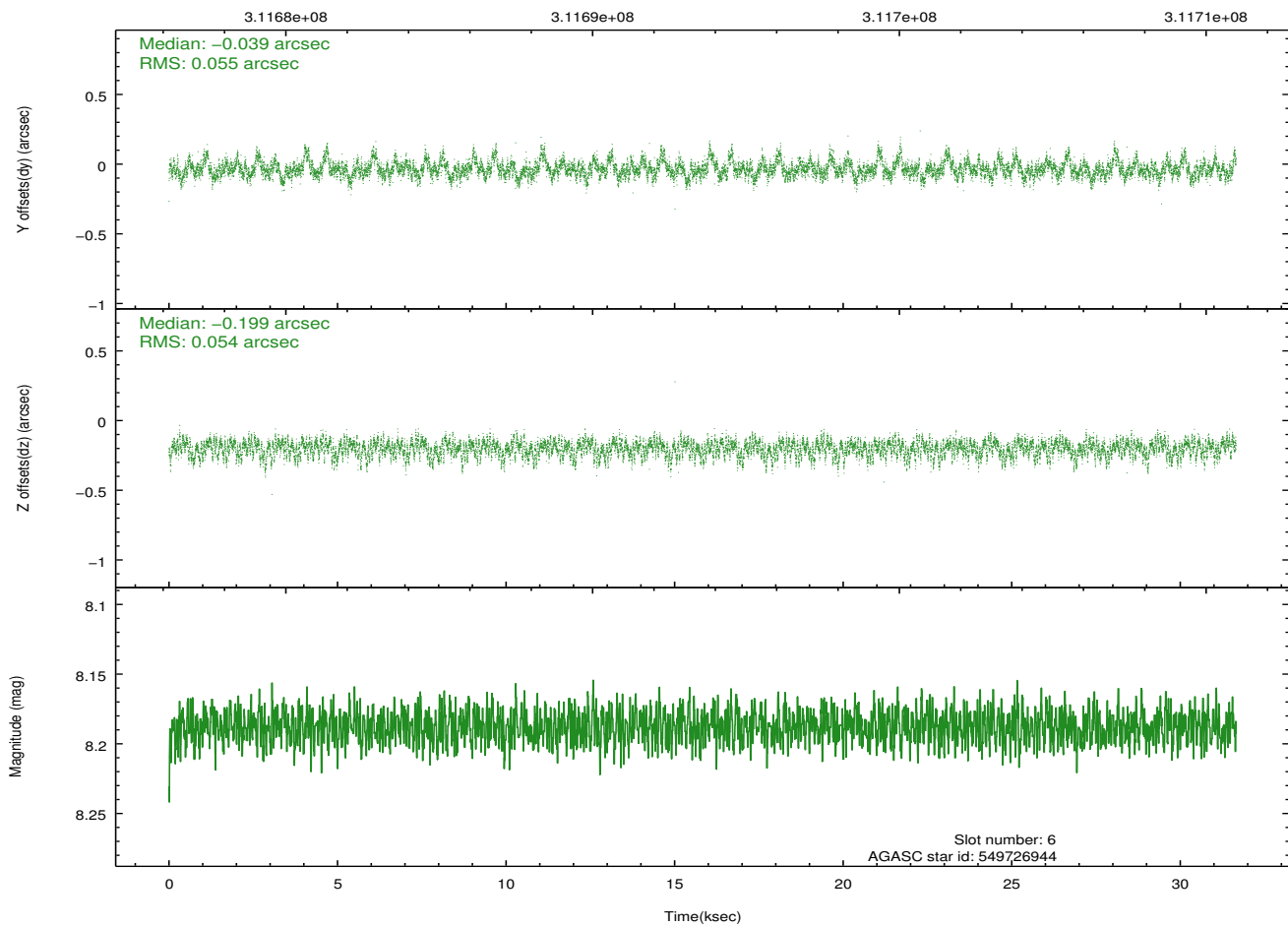
Time (s)



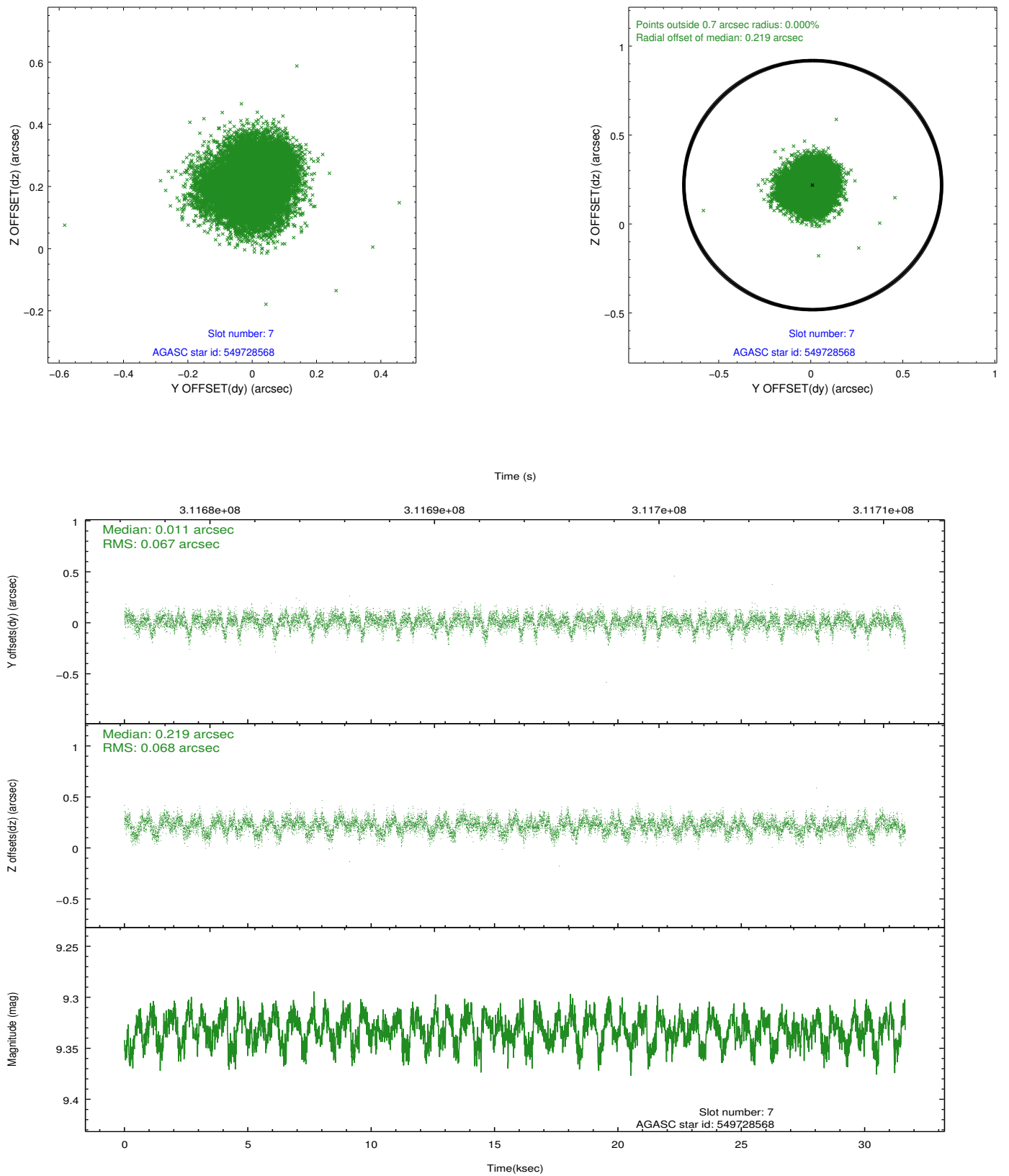
2.4.4 Slot 6



Time (s)

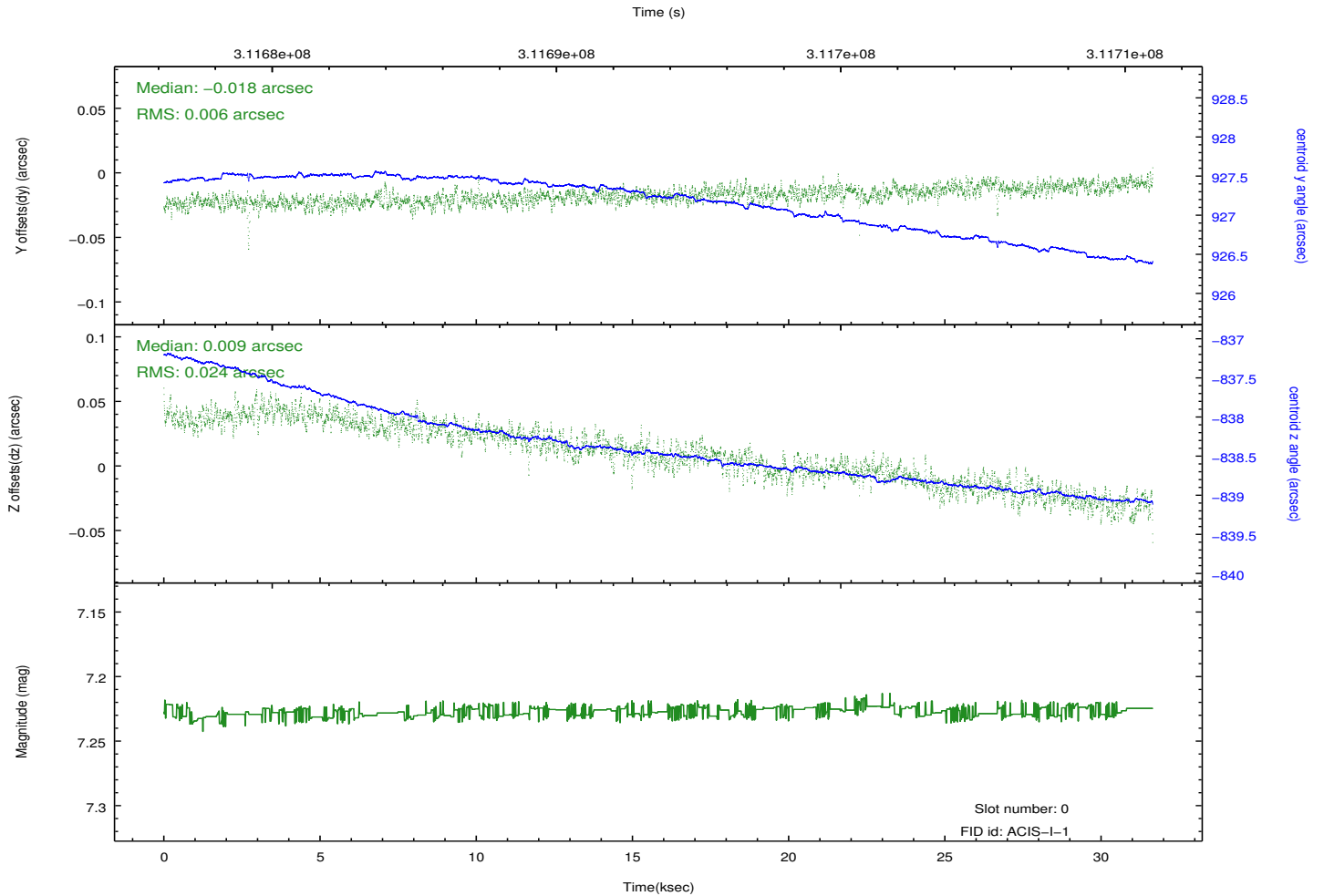
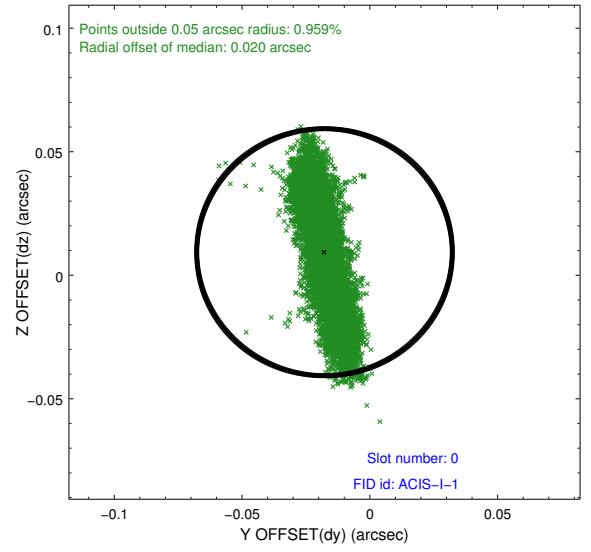
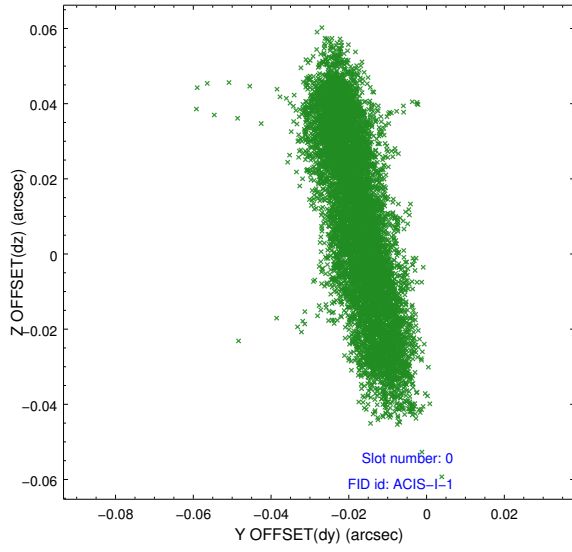


2.4.5 Slot 7

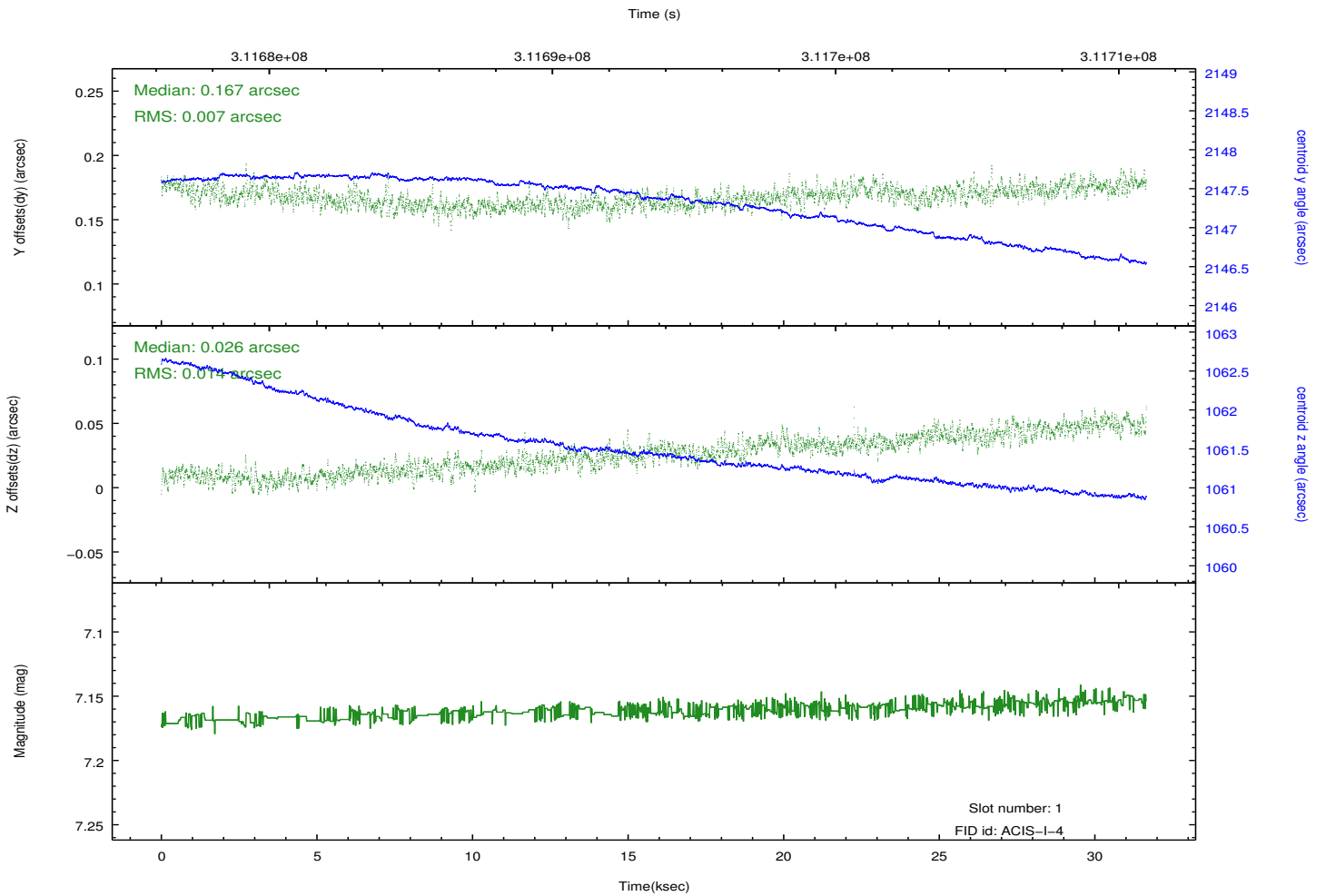
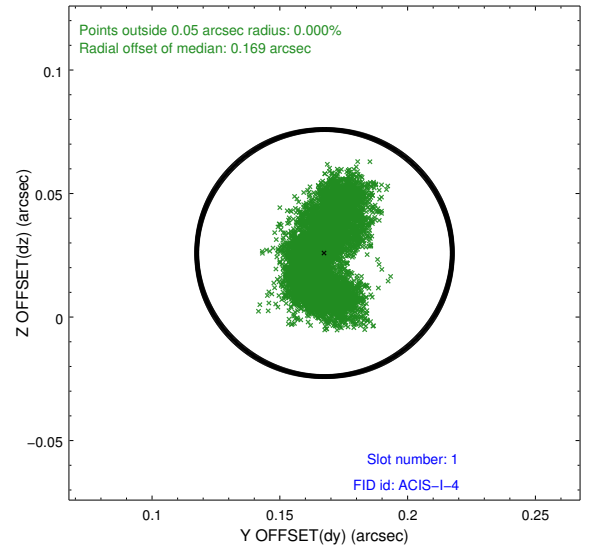
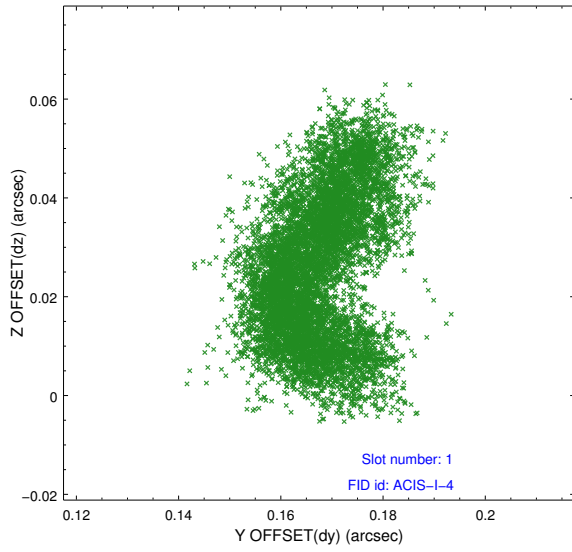


2.5 FID Slots

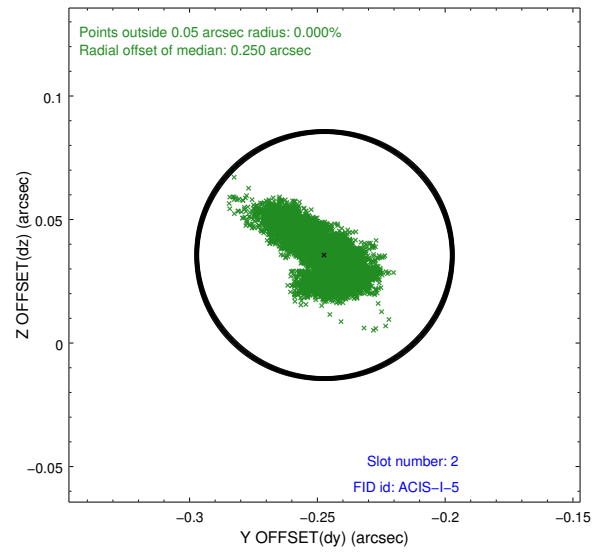
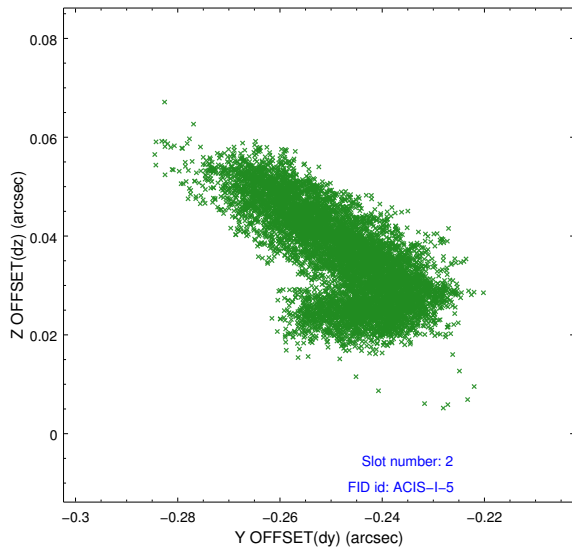
2.5.1 Slot 0



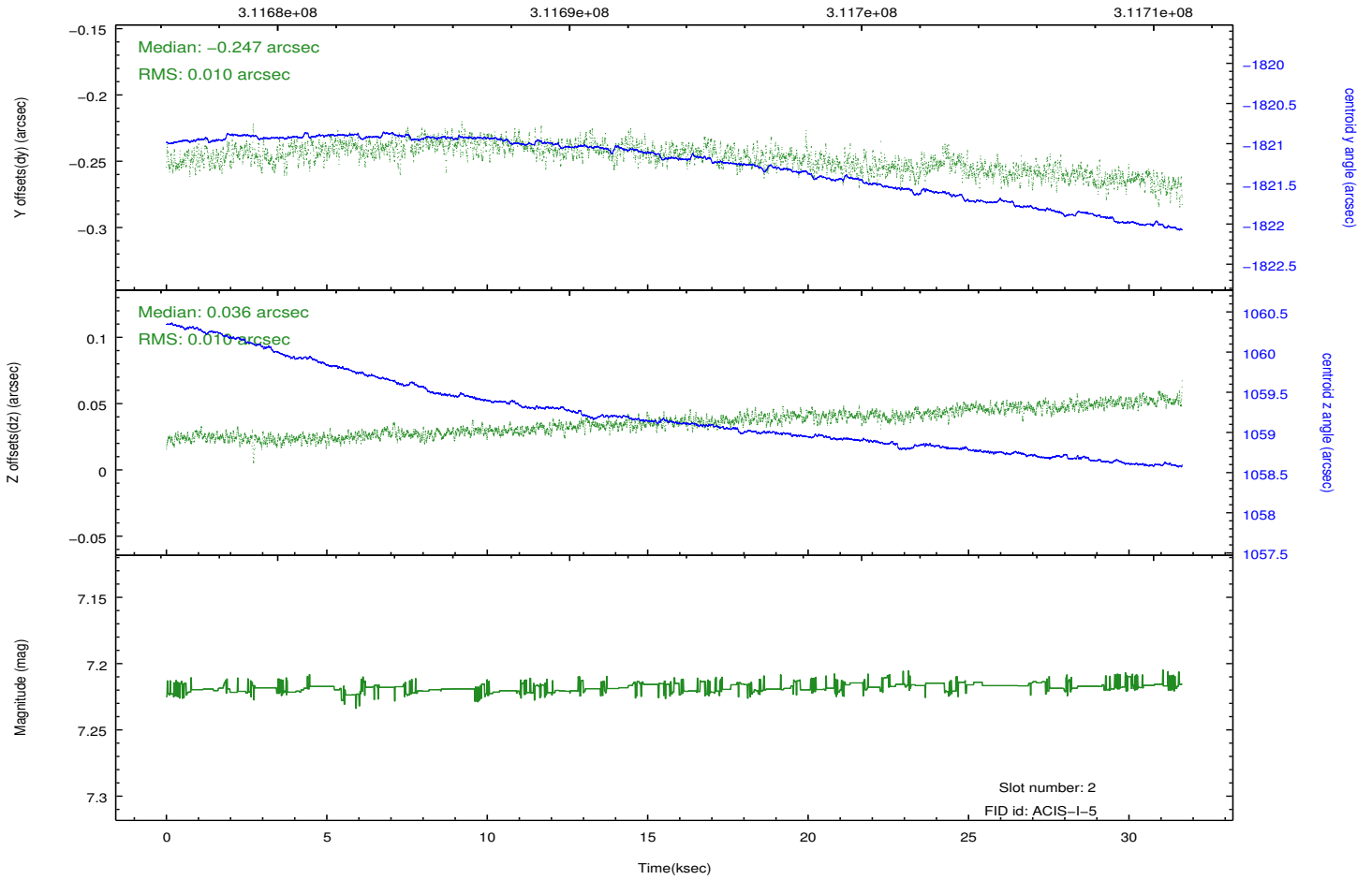
2.5.2 Slot 1



2.5.3 Slot 2



Time (s)



A Summary

A.1 Status

V&V Scientist	Jen Lauer
V&V Date (YYYY-MM-DD)	2012.05.08
V&V Edition	1
V&V Disposition and Status	OK
V&V Charge Time	31.5880089

A.2 Comments

Roll preference met.