

V&V Reference Report

L2 ASCDS Version : 8.4.4

Observation 9809 - L2 Version 2
Chandra X-Ray Center

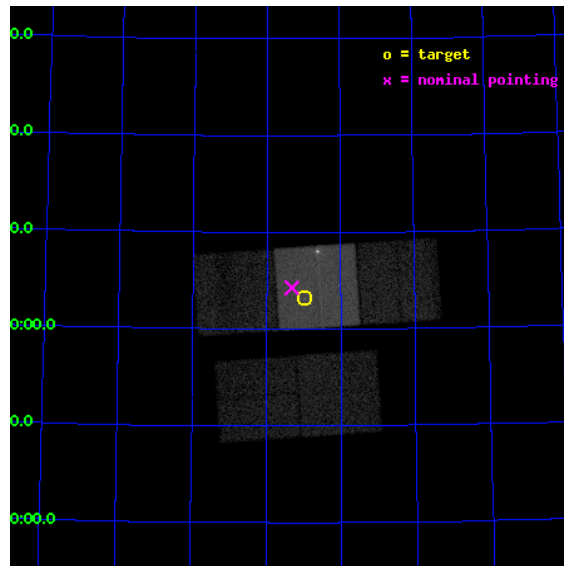
L2 Processing Date : May 8 2012

Contents

1	Front	2
2	OBI	3
2.1	OBI	3
2.1.1	Images	3
2.1.2	Bias	3
2.1.3	Parameters	4
2.1.4	Events	4
2.2	Compared Parameters	5
2.3	Aspect	6
2.4	Star Slots	9
2.4.1	Slot 3	9
2.4.2	Slot 4	10
2.4.3	Slot 5	11
2.4.4	Slot 6	12
2.4.5	Slot 7	13
2.5	FID Slots	14
2.5.1	Slot 0	14
2.5.2	Slot 1	15
2.5.3	Slot 2	16
A	Summary	17
A.1	Status	17
A.2	Comments	17

1 Front

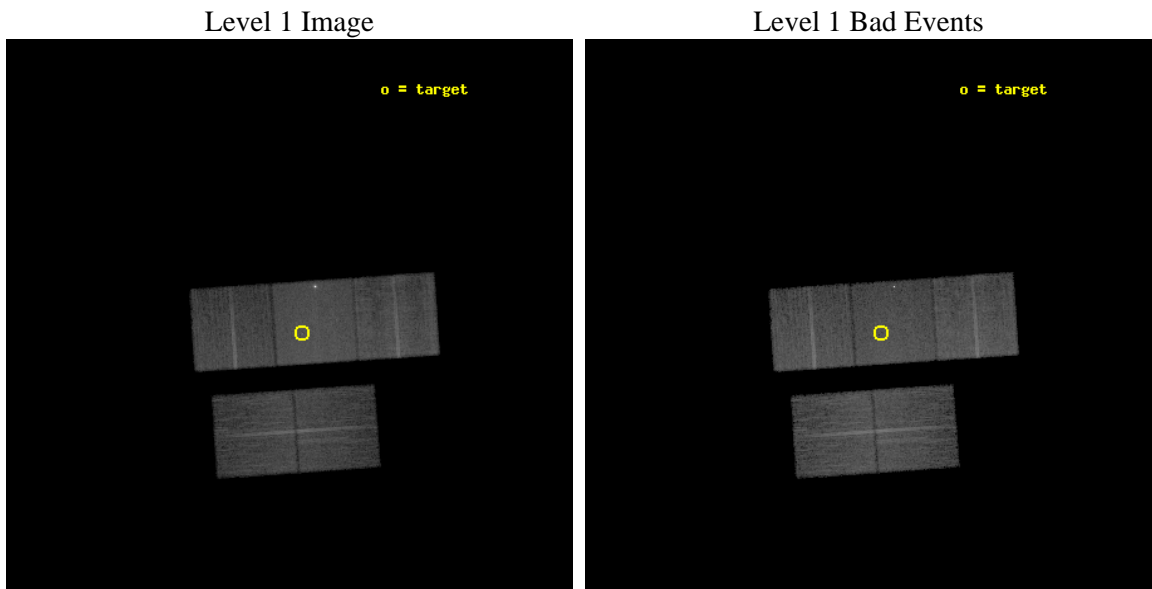
seq_num	701672	Sequence number
obs_id	9809	Observation id
title	Investigating the physics behind the X-ray / radio offset in 4C 74.26	Proposal title
observer	Ms Mary Erlund	Principal investigator
object	4C 74.26 Southern Hotspot	Source name
dtcycle	0	
cycle	P	events from which exps? Prim/Second/Both
ra_targ	310.744583	Observer's specified target RA [deg]
dec_targ	75.053611	Observer's specified target Dec [deg]
ra_nom	310.83021514714	Nominal RA [deg]
dec_nom	75.071338576192	Nominal Dec [deg]
roll_nom	356.07391747548	Nominal Roll [deg]
revision	2	Processing version of data
ontime	12121.000093222	Sum of GTIs [s]
livetime	11962.630303653	Livetime [s]
ontime2	12121.000093222	Sum of GTIs [s]
ontime3	12114.718122661	Sum of GTIs [s]
ontime6	12121.000093222	Sum of GTIs [s]
ontime7	12121.000093222	Sum of GTIs [s]
ontime8	12121.000093222	Sum of GTIs [s]
l2events	134685	Number of level 2 events



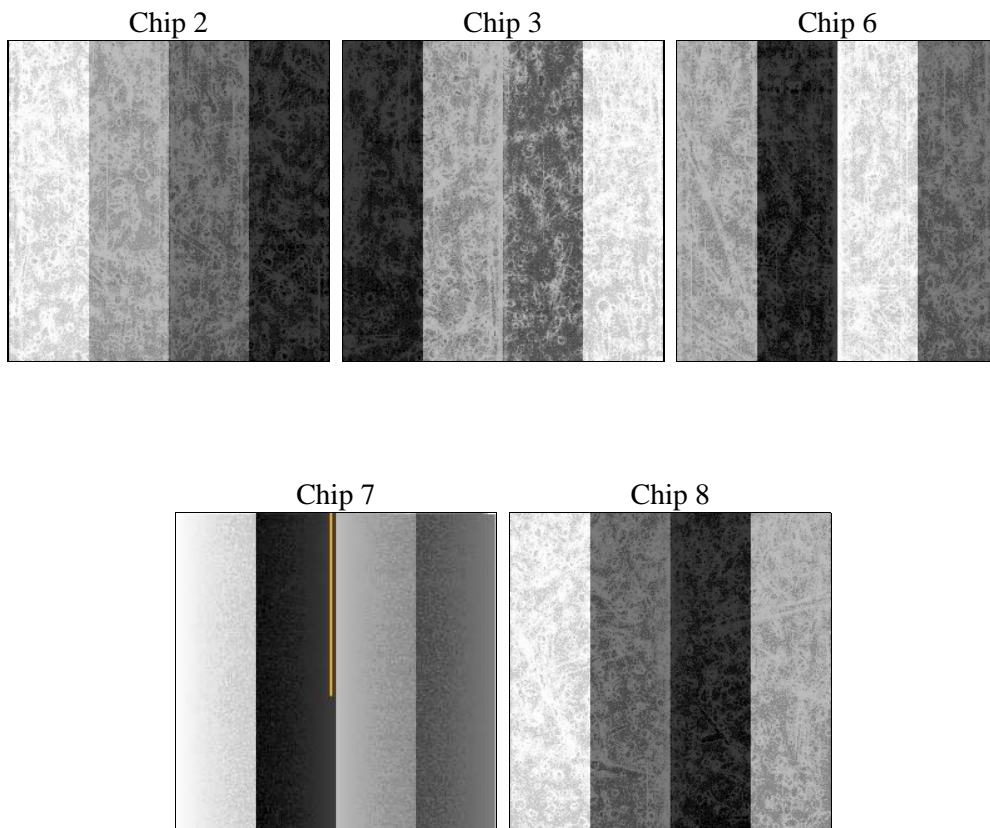
2 OBI

2.1 OBI

2.1.1 Images



2.1.2 Bias



2.1.3 Parameters

obi_num	0	Obi number	sched_exp_time	12000.000000	[s] Scheduled observation exposure time
ascdsver	8.4.4	Processing system revision	ontime	12121.000093222	Sum of GTIs [s]
caldsver	4.4.9	 	ontime2	12121.000093222	Sum of GTIs [s]
date	2012-05-08T14:40:49	Date and time of file creation	ontime3	12114.718122661	Sum of GTIs [s]
revision	2	Processing version of data	ontime6	12121.000093222	Sum of GTIs [s]
			ontime7	12121.000093222	Sum of GTIs [s]
			ontime8	12121.000093222	Sum of GTIs [s]
			l1events	685250	Number of level 1 events

2.1.4 Events

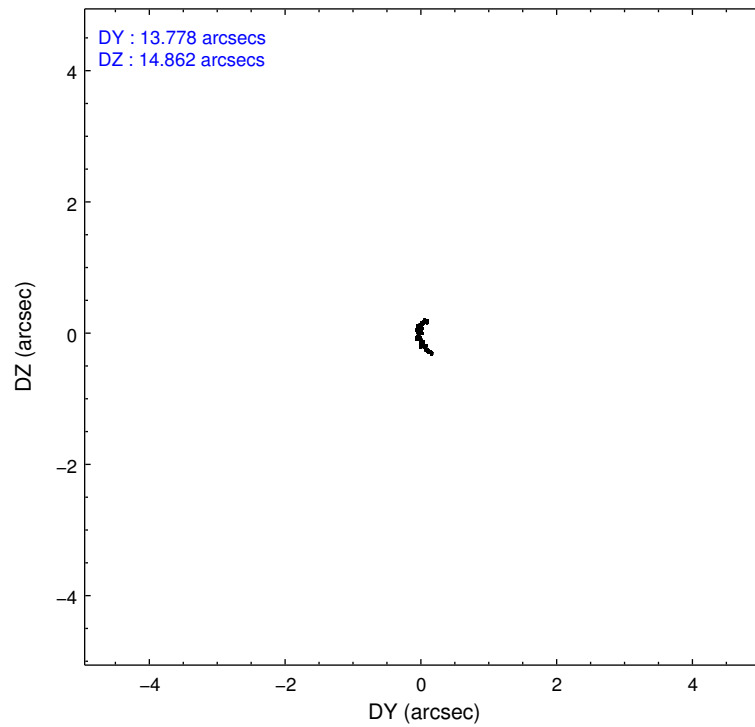
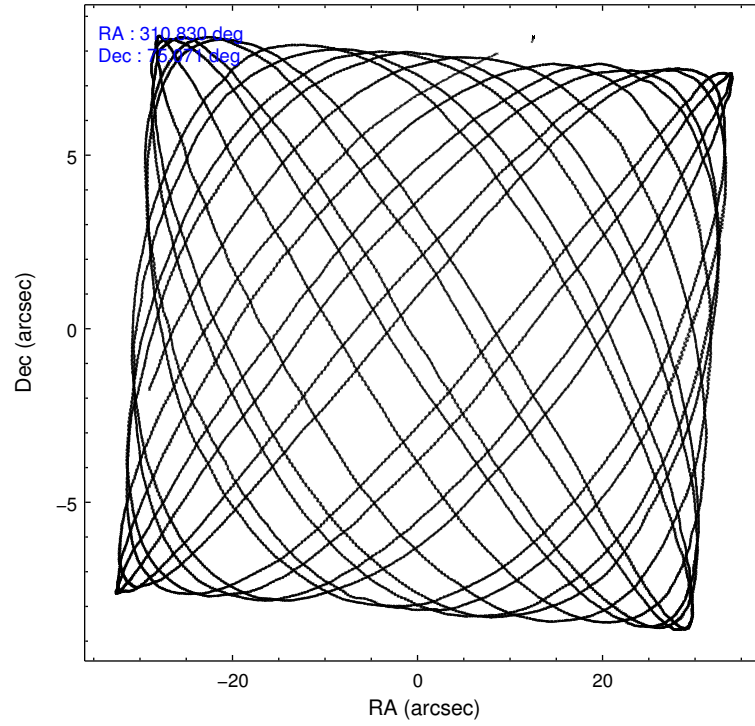
	ccd 2	ccd 3	ccd 6	ccd 7	ccd 8
level 1 events	114388	112166	117233	189916	151547
rejected events	100684	98302	103195	104246	117028
rejected %	88%	87%	88%	54%	77%

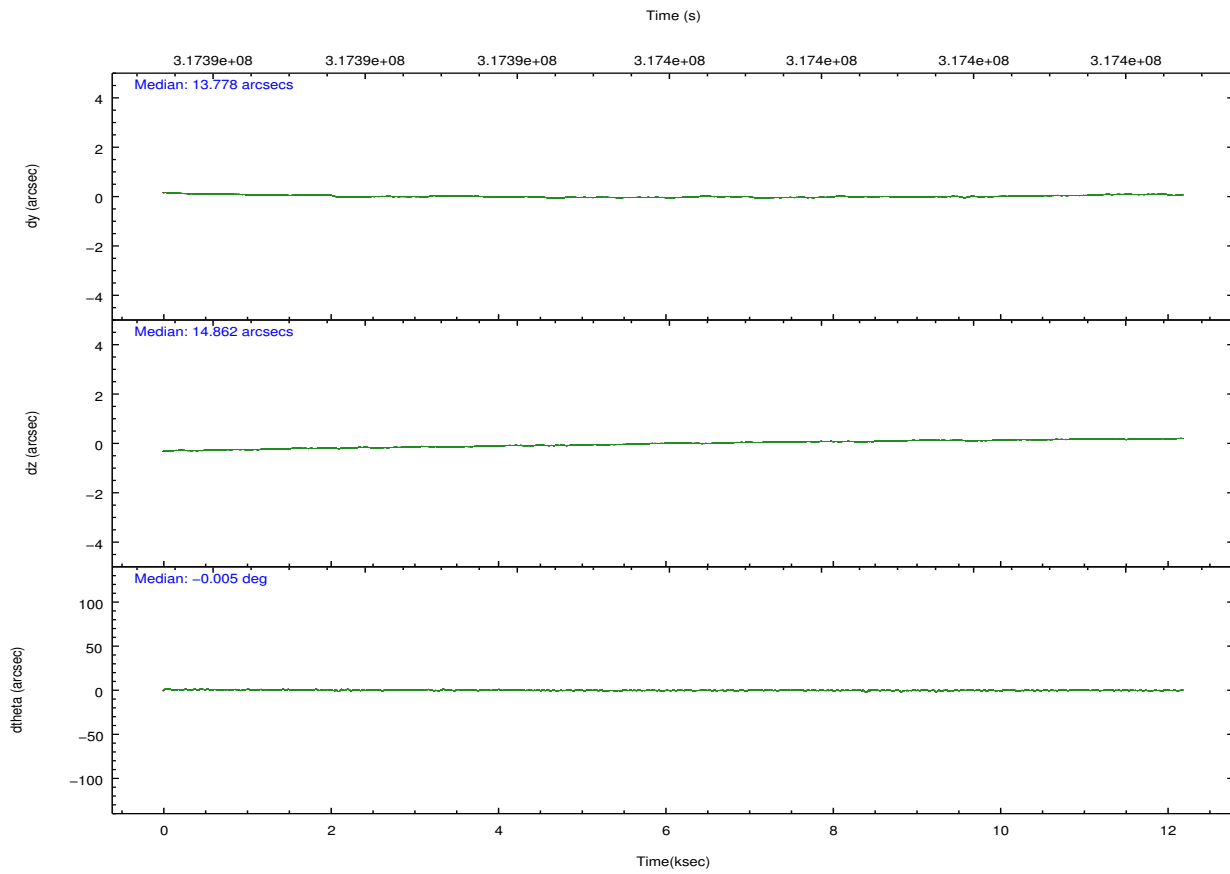
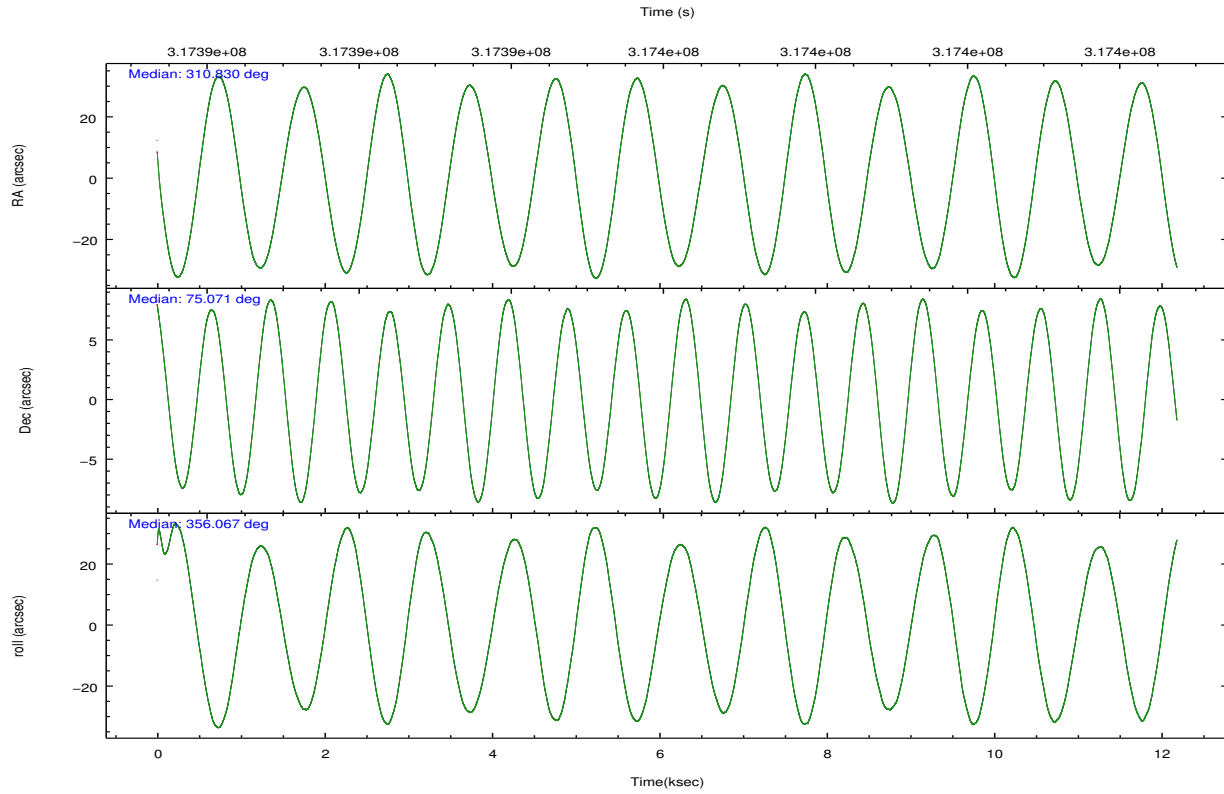
	ccd 2	ccd 3	ccd 6	ccd 7	ccd 8
grade 0 events	6061	6089	5388	9063	10931
	5%	5%	4%	4%	7%
grade 1 events	87	83	66	876	114
	0%	0%	0%	0%	0%
grade 2 events	2844	2646	3088	18024	7777
	2%	2%	2%	9%	5%
grade 3 events	1223	1325	1329	7697	3662
	1%	1%	1%	4%	2%
grade 4 events	1271	1265	1318	7643	3461
	1%	1%	1%	4%	2%
grade 5 events	4730	5487	5598	17726	7519
	4%	4%	4%	9%	4%
grade 6 events	2307	2547	2926	43283	8707
	2%	2%	2%	22%	5%
grade 7 events	95865	92724	97520	85604	109376
	83%	82%	83%	45%	72%

2.2 Compared Parameters

Parameter	Planned	Actual	Parameter	Planned	Actual
Instrument	ACIS	ACIS	Obspar format version number	7	7
Detector	ACIS-23678	ACIS-23678	Obspar file type	PREDICTED	ACTUAL
Grating	NONE	NONE	Obspar update status	NONE	UPDATED
Data mode	VFAINT	VFAINT	CCD I0 on	N	N
Observation mode	POINTING	POINTING	CCD I1 on	N	N
[deg] Pointing RA	310.735653	310.8302151471415	CCD I2 on	O1	Y
[deg] Pointing Dec	75.058966	75.07133857619201	CCD I3 on	Y	Y
[deg] Pointing Roll	356.008624	356.073917475479	CCD S0 on	N	N
[mm] SIM focus pos	-0.684267	-0.6828225247311905	CCD S1 on	N	N
[mm] SIM defocus	0	0.001444936568705701	CCD S2 on	Y	Y
[mm] SIM translation stage pos	-190.132523	-190.1400660498719	CCD S3 on	Y	Y
[mm] SIM translation stage offset	0	0.00754346686406393	CCD S4 on	Y	Y
[s] Observation start time (MET)	317390129.184000	317389154.64281	CCD S5 on	N	N
Observation start date	2008-01-22T11:54:24	2008-01-22T11:39:14	Number of optional ACIS chips dropped	0	0
[s] Observation end time (MET)	317402129.184000	317402821.99347	On-chip summing requested	N	N
Observation end date	2008-01-22T15:14:24	2008-01-22T15:27:01	Subarray requested	NONE	NONE
Read mode	TIMED	TIMED	Alternating exposures requested	N	N
			[s] Primary exposure time	0.000000	3.1

2.3 Aspect



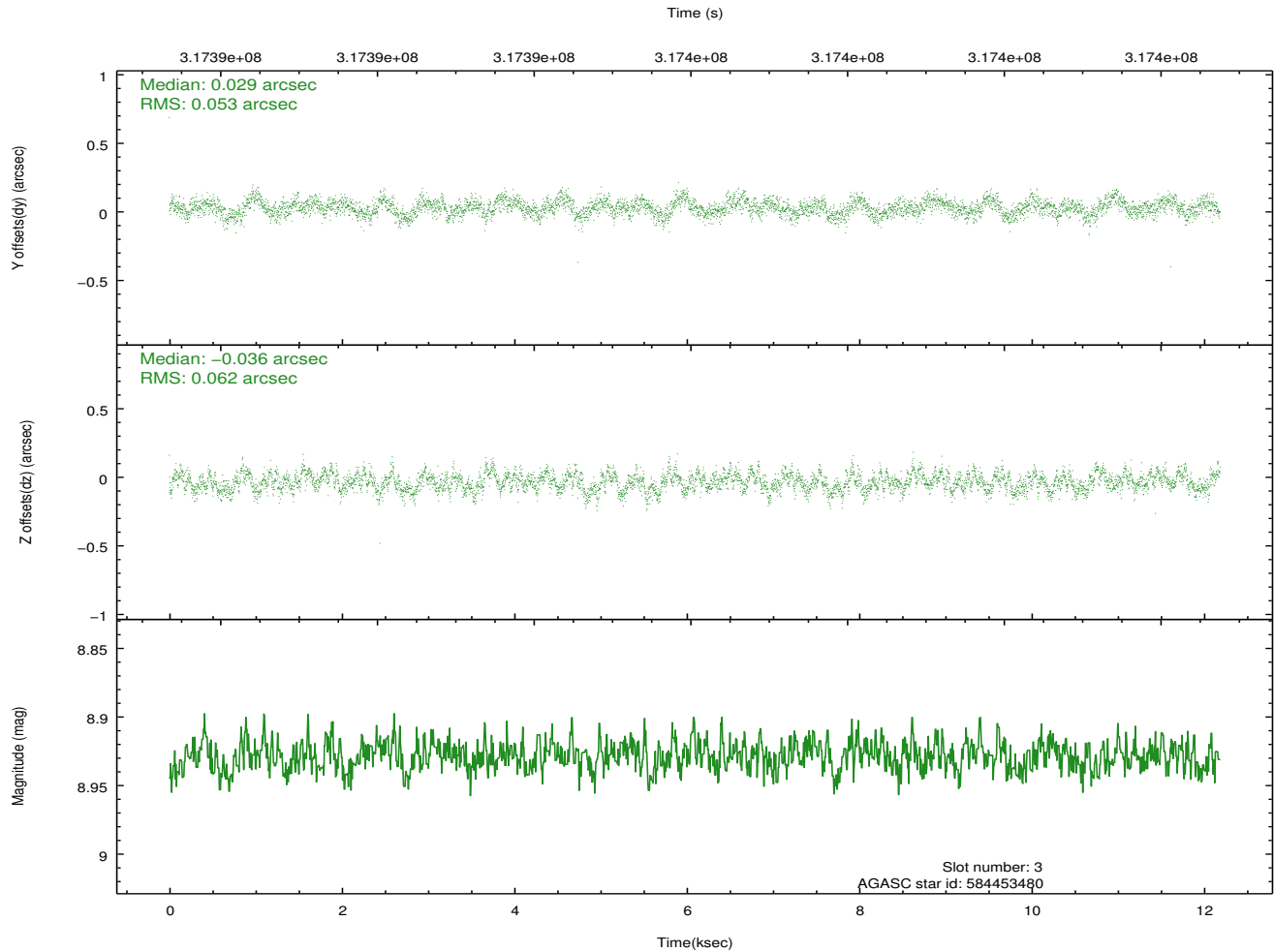
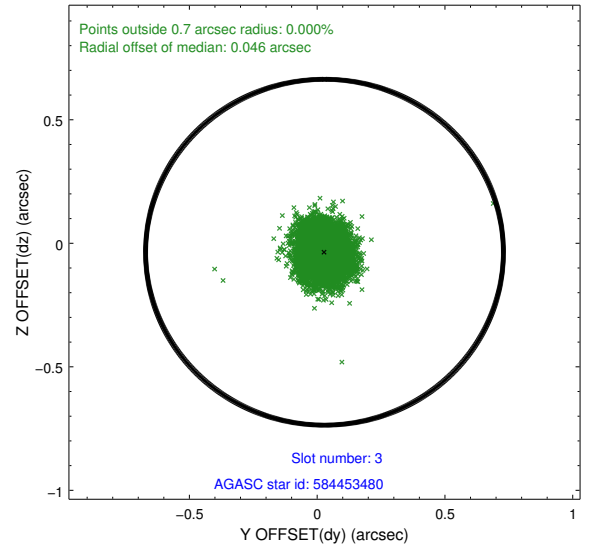
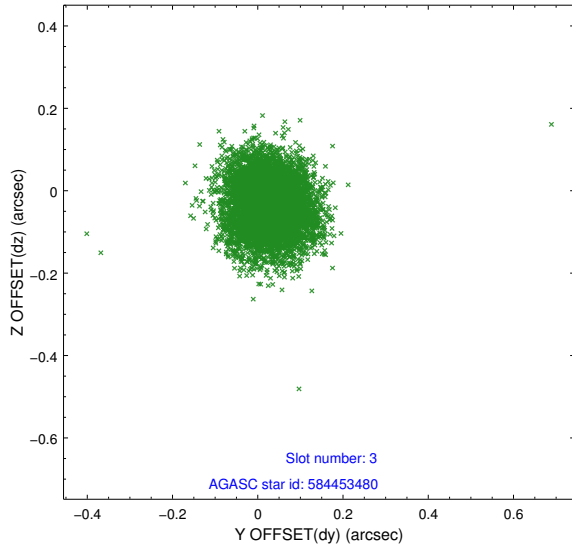


Slot Statistics

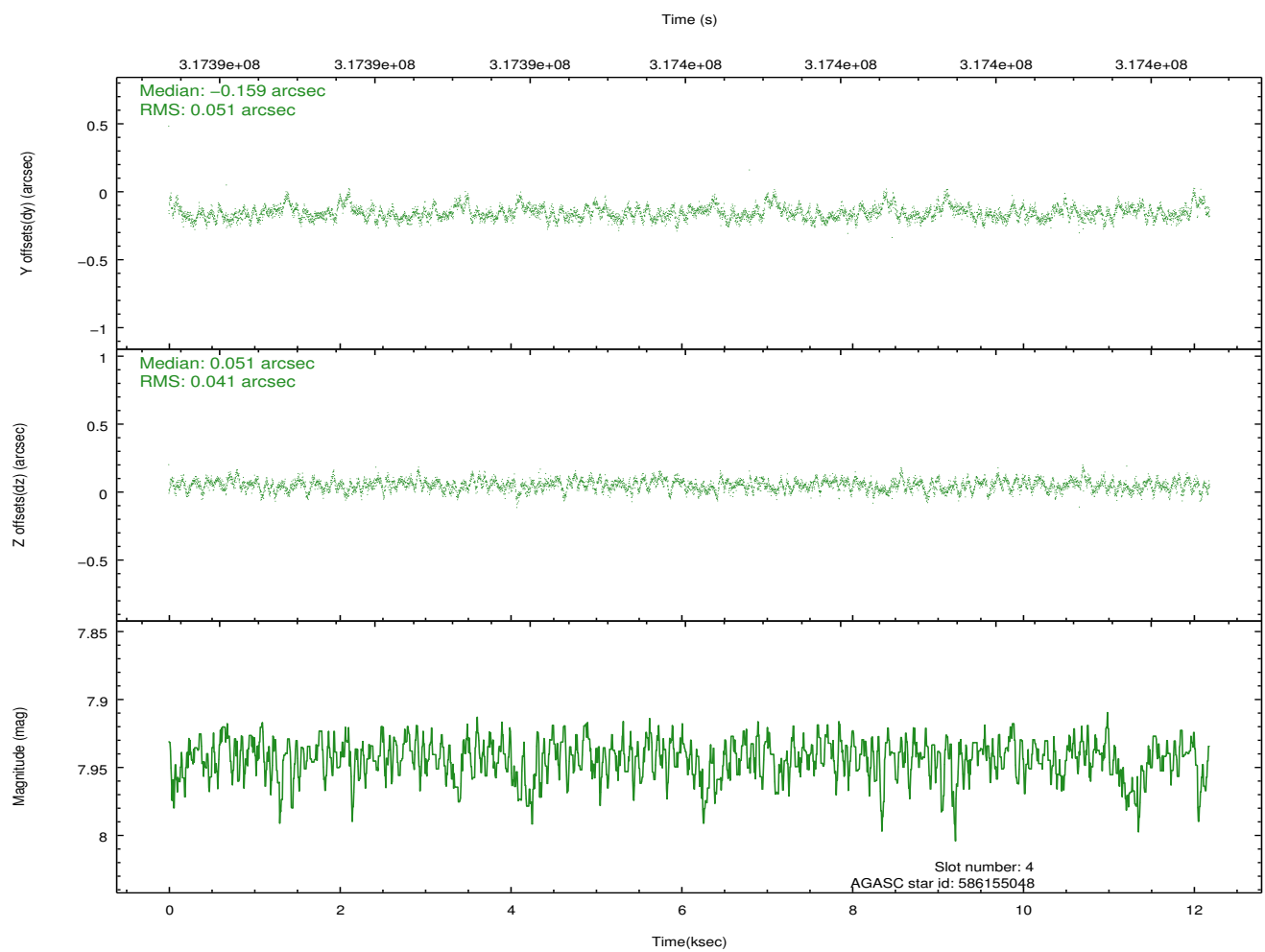
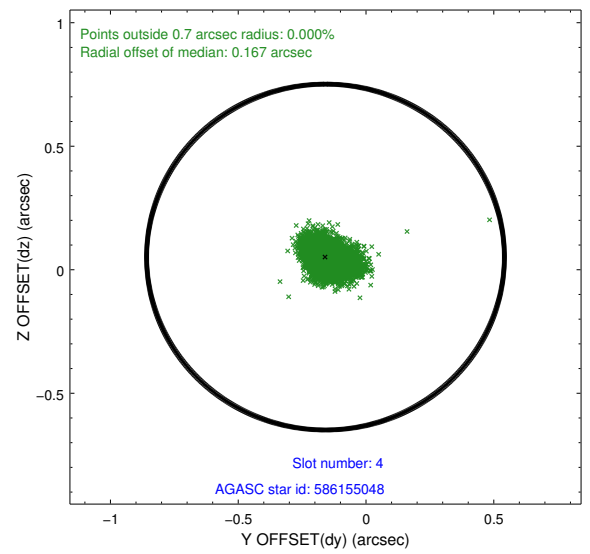
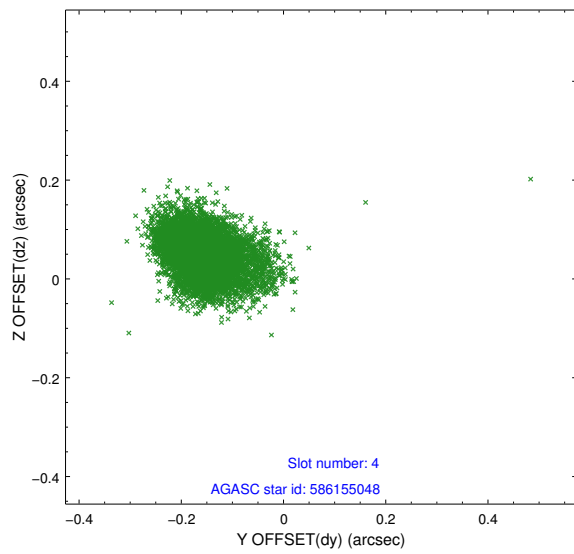
slot	status	id	mag	n_pts	med_dy	med_dz	dr1	dr2	ra	dec	mean_y	mean_z
0	FID	ACIS-S-2	7.09	2972	-0.070	-0.029	0.007	0.012	0.000000	0.000000	-766.77	-1736.25
1	FID	ACIS-S-4	7.19	2972	0.193	0.041	0.006	0.010	0.000000	0.000000	2146.55	171.91
2	FID	ACIS-S-5	7.22	2971	-0.155	-0.003	0.007	0.012	0.000000	0.000000	-1819.20	165.95
3	GUIDE	584453480	8.93	5937	0.029	-0.036	0.087	0.139	311.245727	74.720187	568.07	-1180.70
4	GUIDE	586155048	7.94	5939	-0.159	0.051	0.066	0.116	312.135794	74.489876	1486.78	-1933.54
5	GUIDE	586158584	7.66	5943	0.098	-0.073	0.095	0.144	312.959225	74.639083	2218.14	-1320.85
6	GUIDE	601098528	9.13	5939	0.048	-0.024	0.098	0.153	310.058226	75.008164	-616.02	-222.94
7	GUIDE	601099480	9.93	5931	-0.016	0.083	0.123	0.201	313.504982	75.400753	2416.45	1461.72

2.4 Star Slots

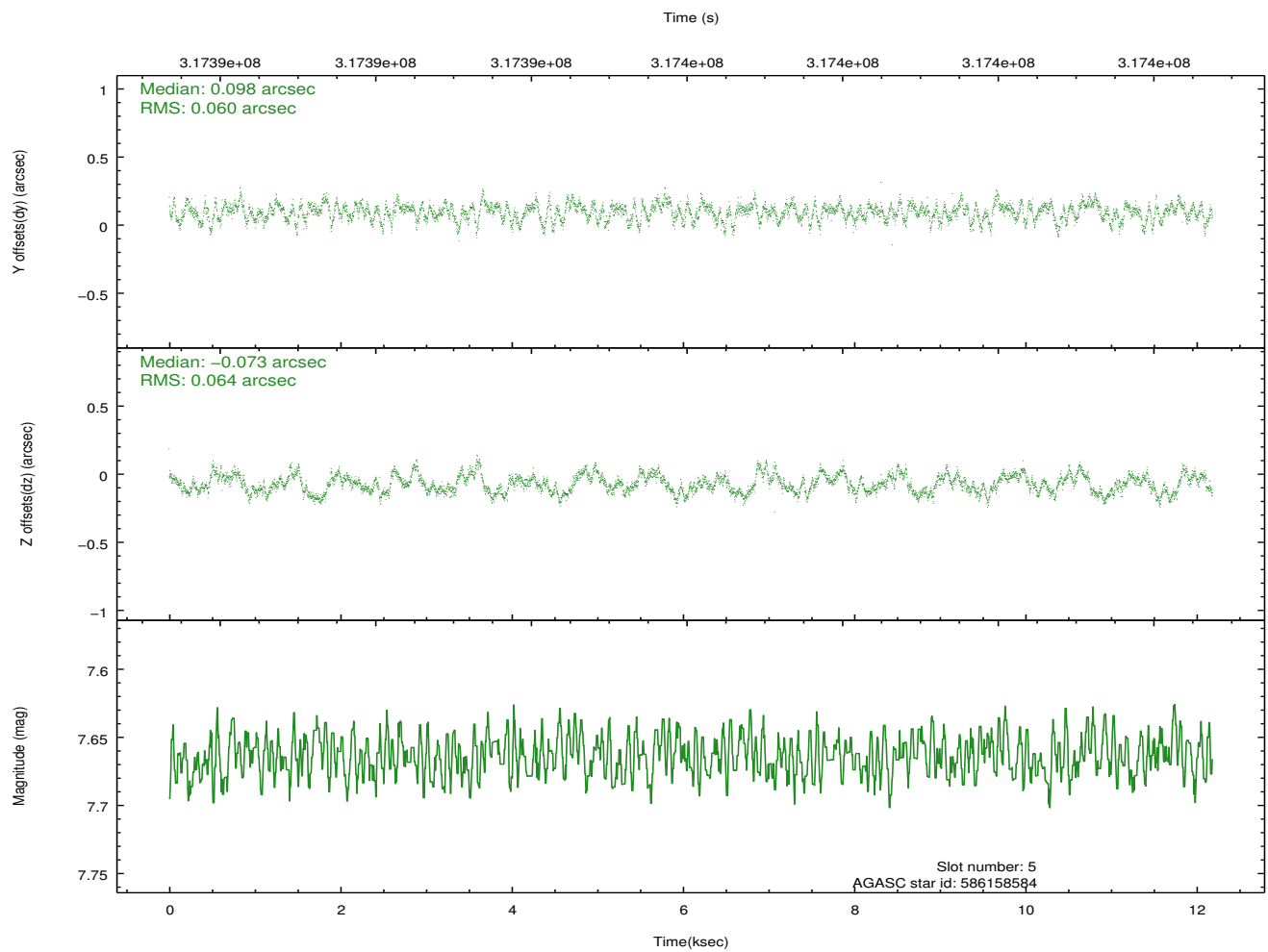
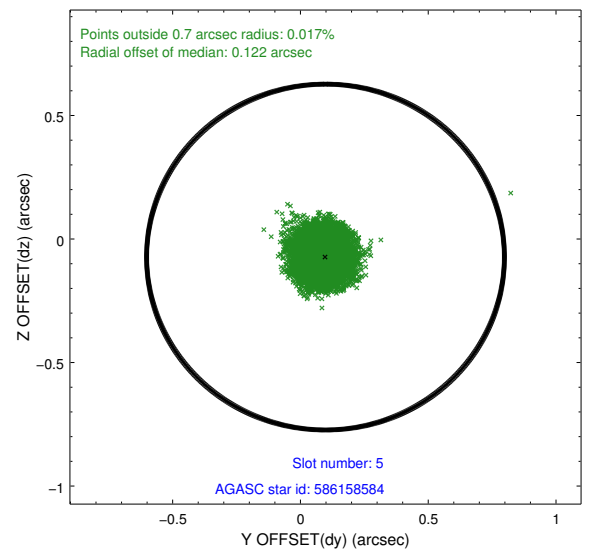
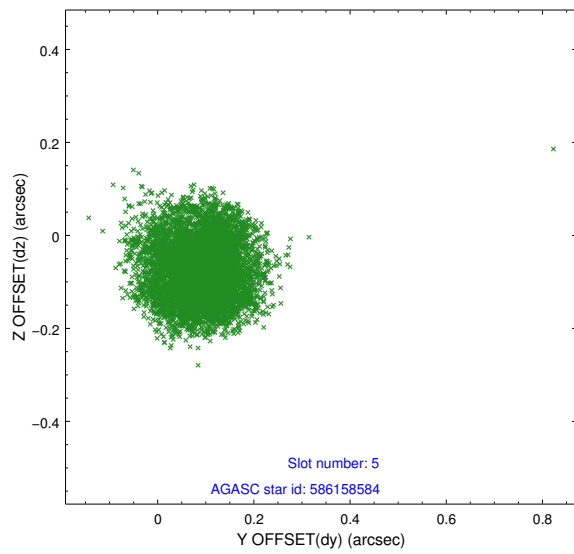
2.4.1 Slot 3



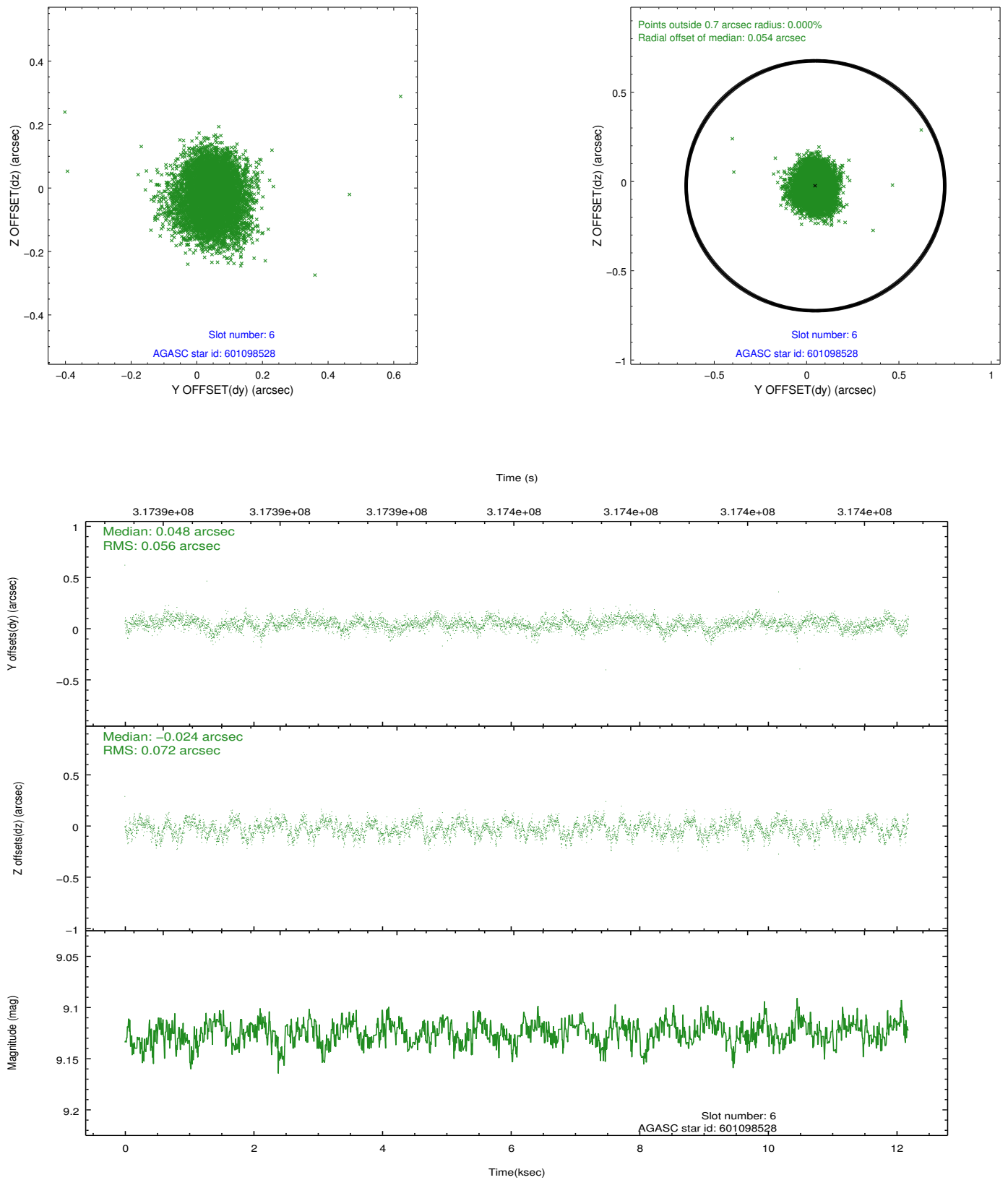
2.4.2 Slot 4



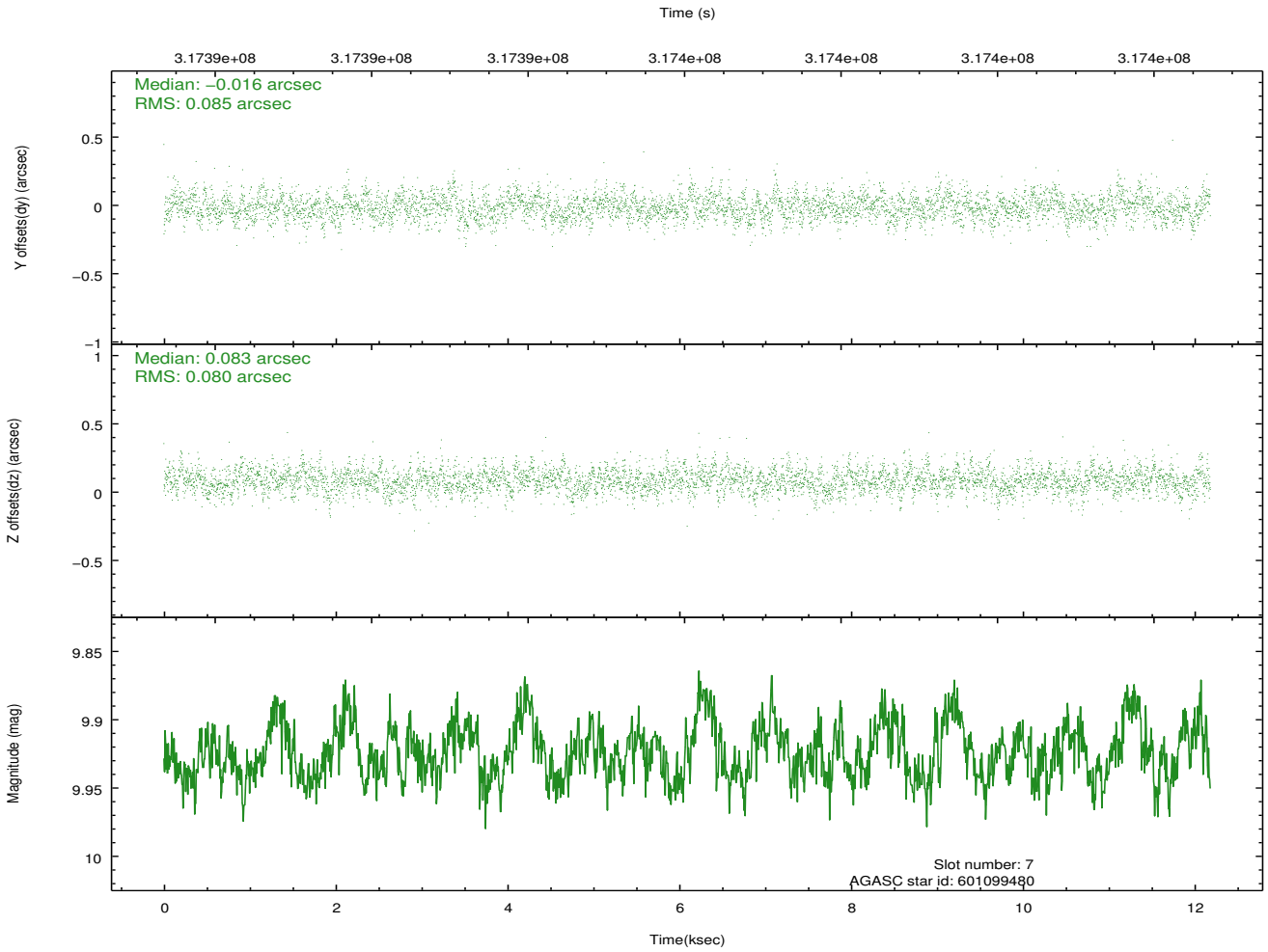
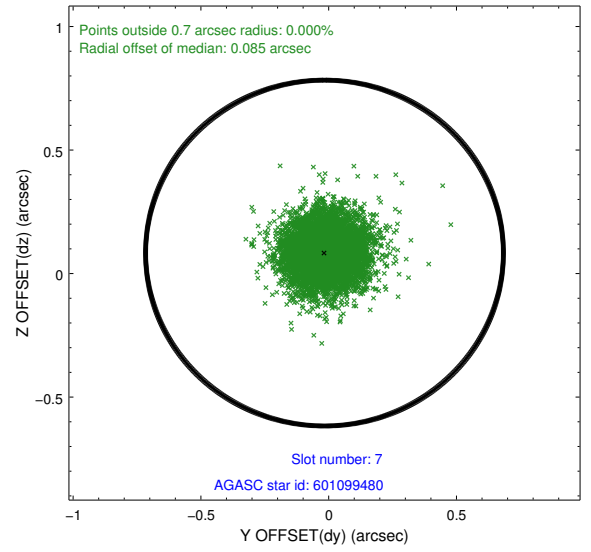
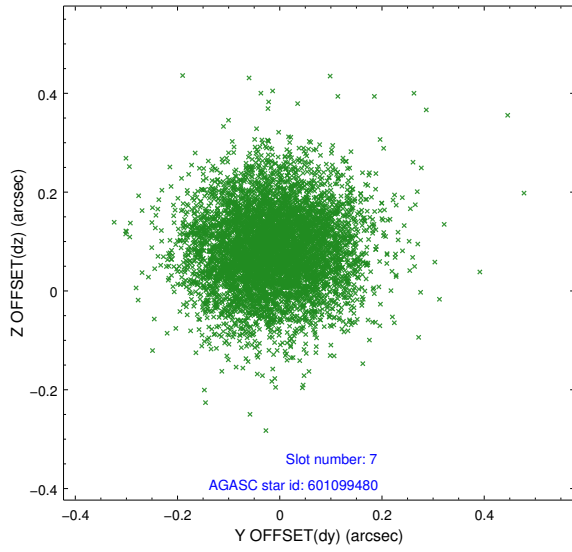
2.4.3 Slot 5



2.4.4 Slot 6

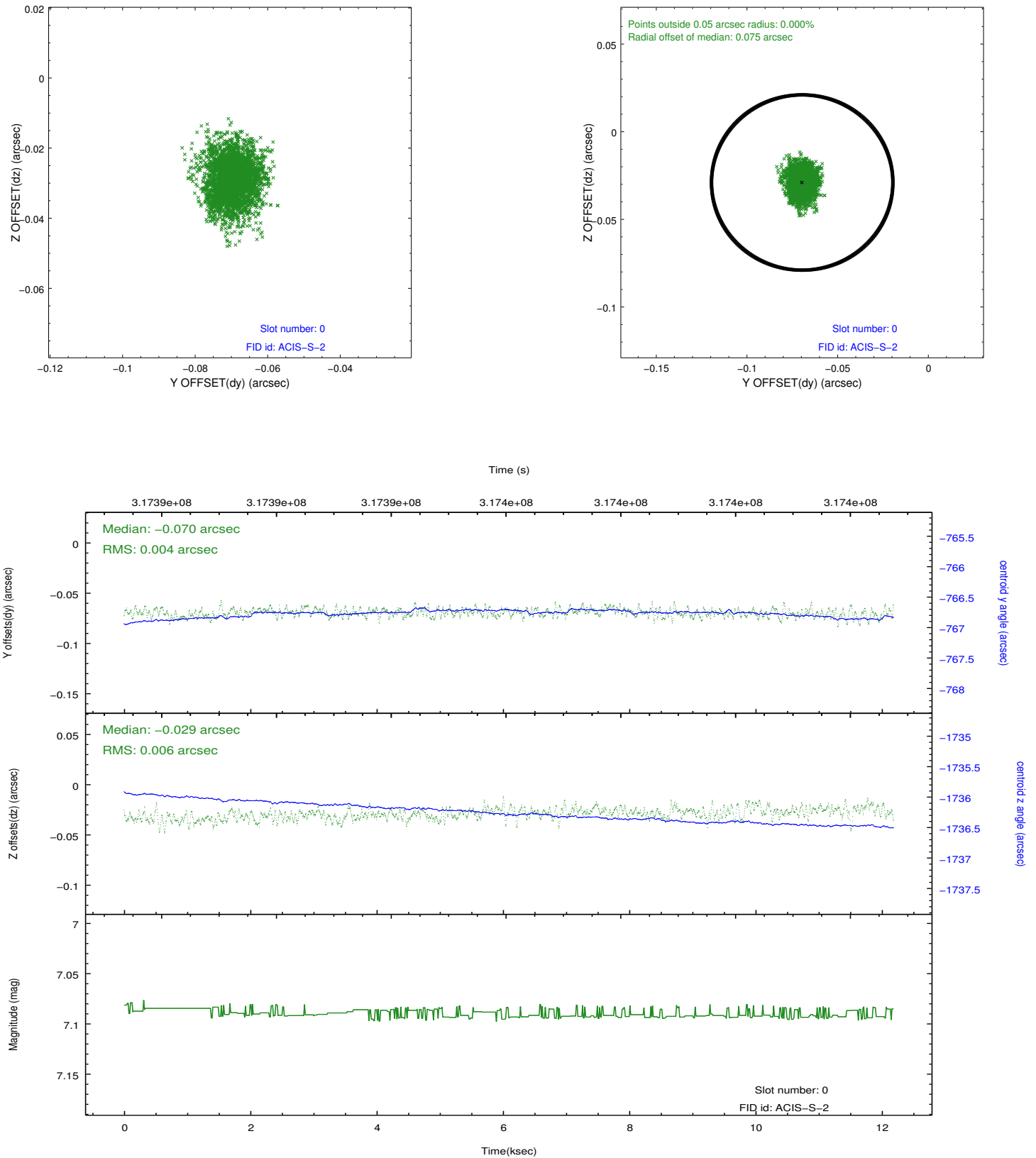


2.4.5 Slot 7

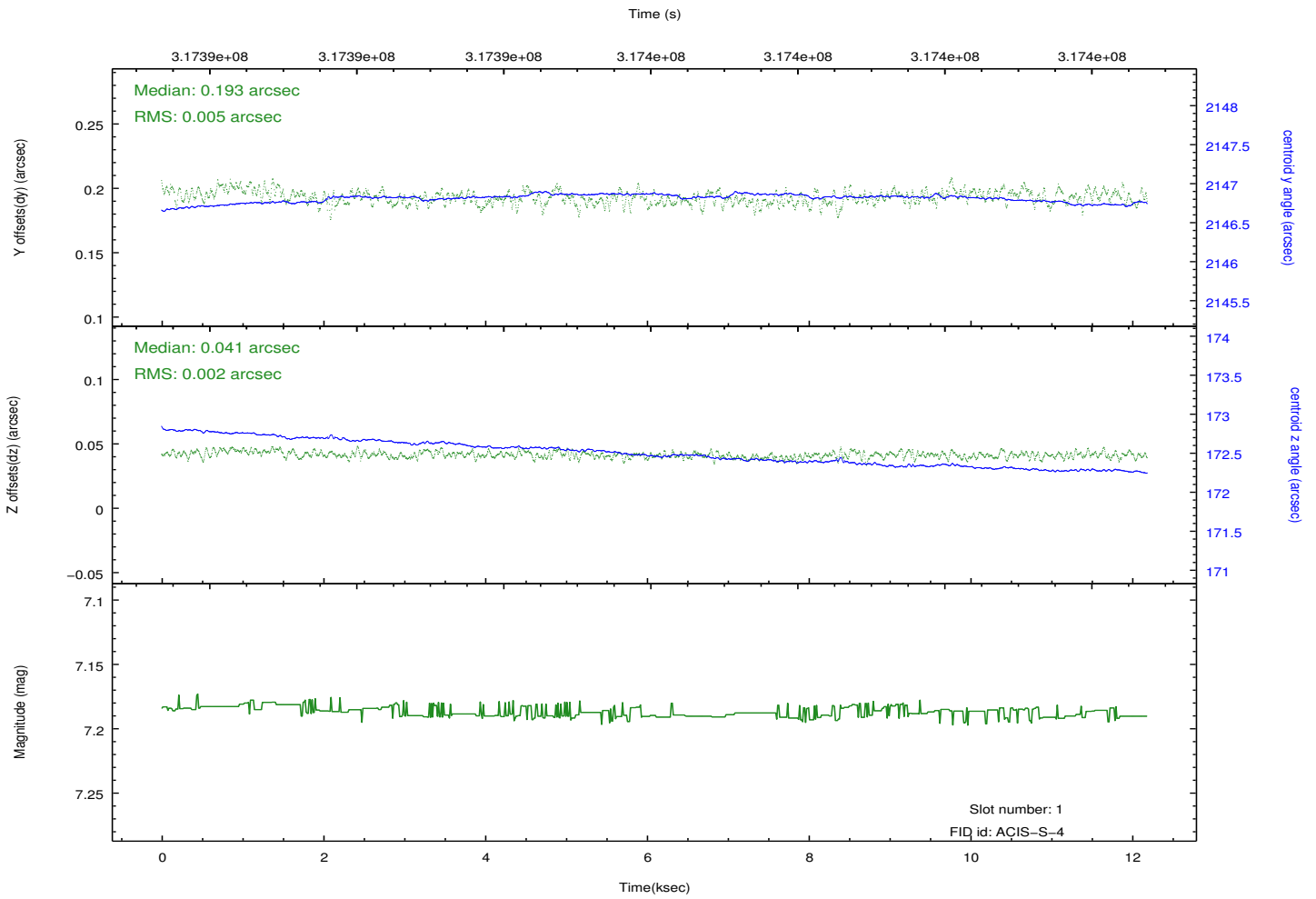
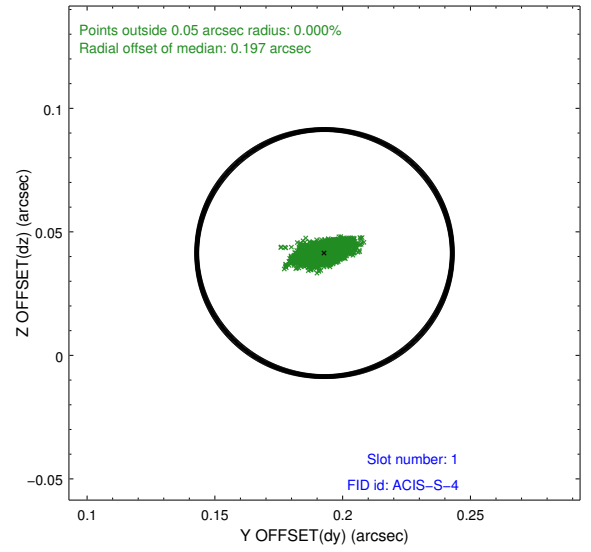
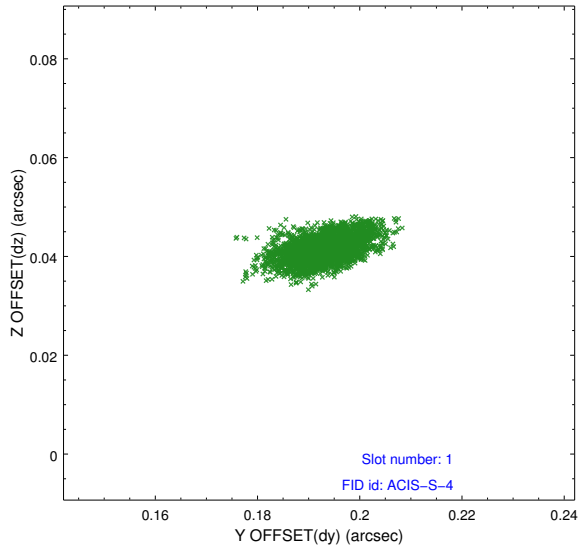


2.5 FID Slots

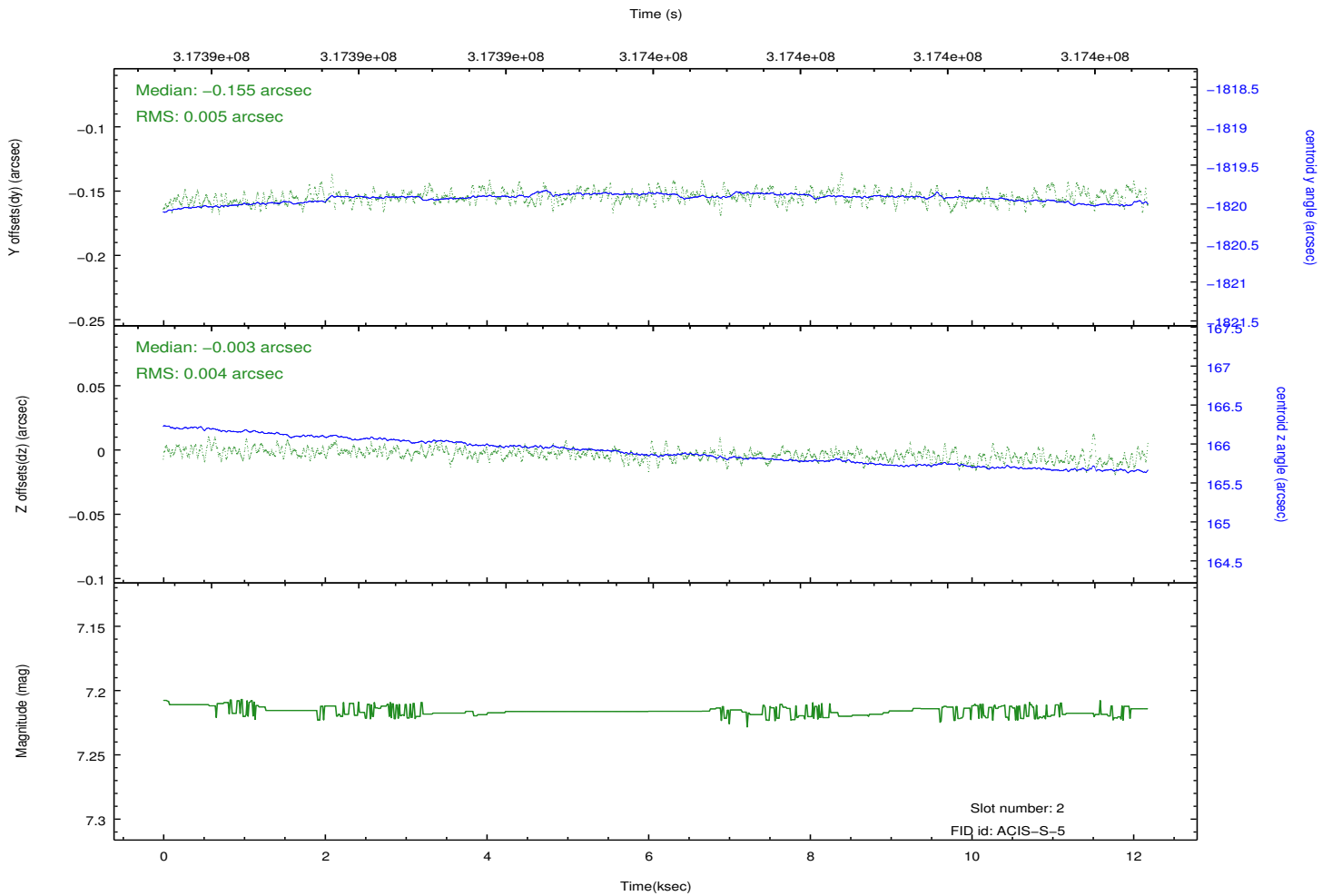
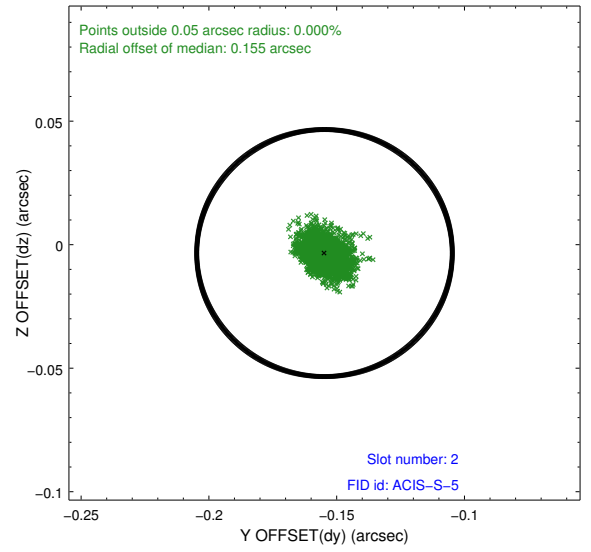
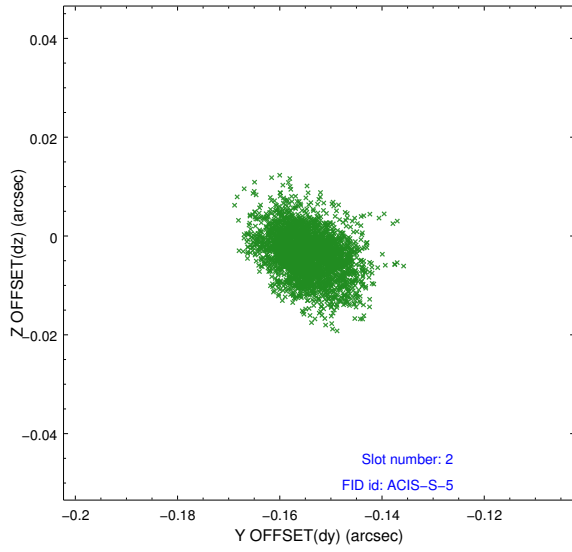
2.5.1 Slot 0



2.5.2 Slot 1



2.5.3 Slot 2



A Summary

A.1 Status

V&V Scientist	Jen Lauer
V&V Date (YYYY-MM-DD)	2012.05.10
V&V Edition	1
V&V Disposition and Status	OK
V&V Charge Time	12.121

A.2 Comments