

V&V Reference Report

L2 ASCDS Version : 8.4.4

Observation 9889 - L2 Version 2
Chandra X-Ray Center

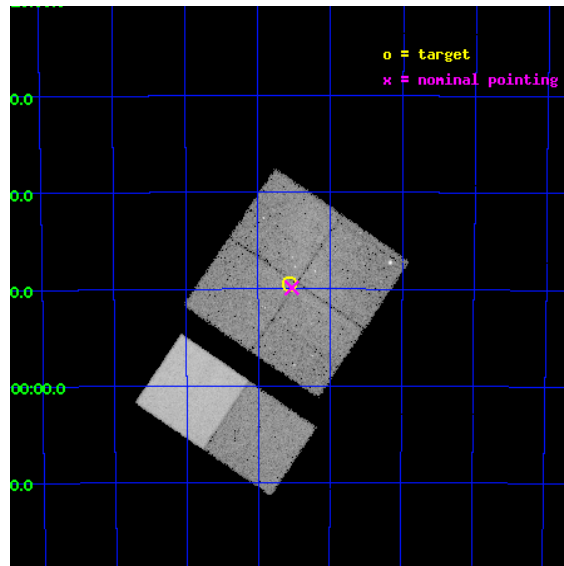
L2 Processing Date : May 18 2012

Contents

1	Front	2
2	OBI	3
2.1	OBI	3
2.1.1	Images	3
2.1.2	Bias	3
2.1.3	Parameters	4
2.1.4	Events	4
2.2	Compared Parameters	5
2.3	Aspect	6
2.4	Star Slots	9
2.4.1	Slot 3	9
2.4.2	Slot 4	10
2.4.3	Slot 5	11
2.4.4	Slot 6	12
2.4.5	Slot 7	13
2.5	FID Slots	14
2.5.1	Slot 0	14
2.5.2	Slot 1	15
2.5.3	Slot 2	16
A	Summary	17
A.1	Status	17
A.2	Comments	17

1 Front

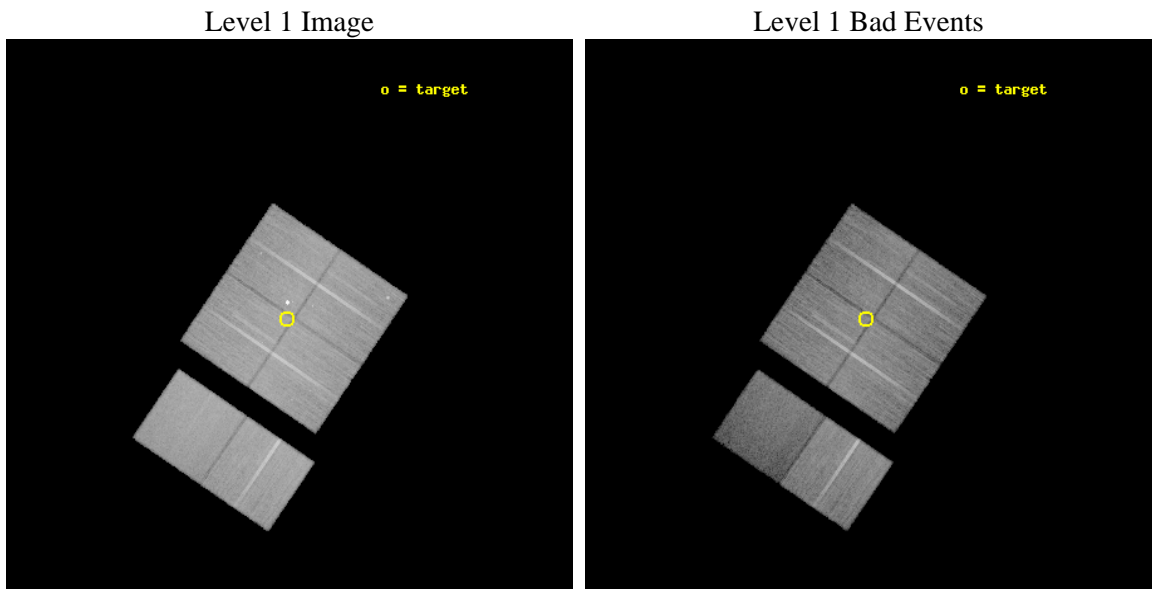
seq_num	900834	Sequence number
obs_id	9889	Observation id
title	The Great Nebula in Carina: Protoplanetary Disks to Starburst Galaxies	Proposal title
observer	Dr. Leisa Townsley	Principal investigator
object	Carina Superbubble Ptg 2	Source name
dtcycle	0	
cycle	P	events from which exps? Prim/Second/Both
ra_targ	160.1425	Observer's specified target RA [deg]
dec_targ	-59.825194	Observer's specified target Dec [deg]
ra_nom	160.13251707024	Nominal RA [deg]
dec_nom	-59.831529517208	Nominal Dec [deg]
roll_nom	214.20004763629	Nominal Roll [deg]
revision	2	Processing version of data
ontime	27158.358928561	Sum of GTIs [s]
livetime	26814.463435007	Livetime [s]
ontime0	27158.358928502	Sum of GTIs [s]
ontime1	27161.599898875	Sum of GTIs [s]
ontime2	27161.599898875	Sum of GTIs [s]
ontime3	27158.358928561	Sum of GTIs [s]
ontime6	27161.599898875	Sum of GTIs [s]
ontime7	27161.599898875	Sum of GTIs [s]
l2events	217961	Number of level 2 events



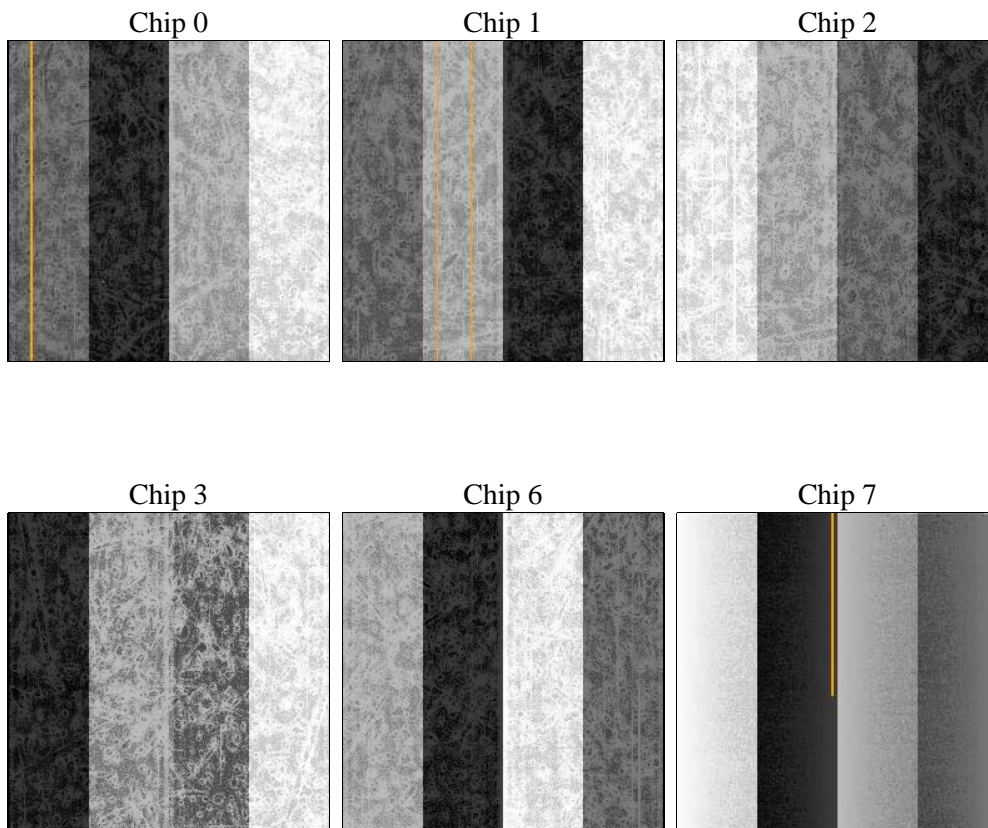
2 OBI

2.1 OBI

2.1.1 Images



2.1.2 Bias



2.1.3 Parameters

obi_num	0	Obi number	sched_exp_time	27000.000000	[s] Scheduled observation exposure time
ascdsver	8.4.4	Processing system revision	ontime	27158.358928561	Sum of GTIs [s]
caldbver	4.4.9	 	ontime0	27158.358928502	Sum of GTIs [s]
date	2012-05-18T14:31:29	Date and time of file creation	ontime1	27161.599898875	Sum of GTIs [s]
revision	2	Processing version of data	ontime2	27161.599898875	Sum of GTIs [s]
			ontime3	27158.358928561	Sum of GTIs [s]
			ontime6	27161.599898875	Sum of GTIs [s]
			ontime7	27161.599898875	Sum of GTIs [s]
			l1events	1247568	Number of level 1 events

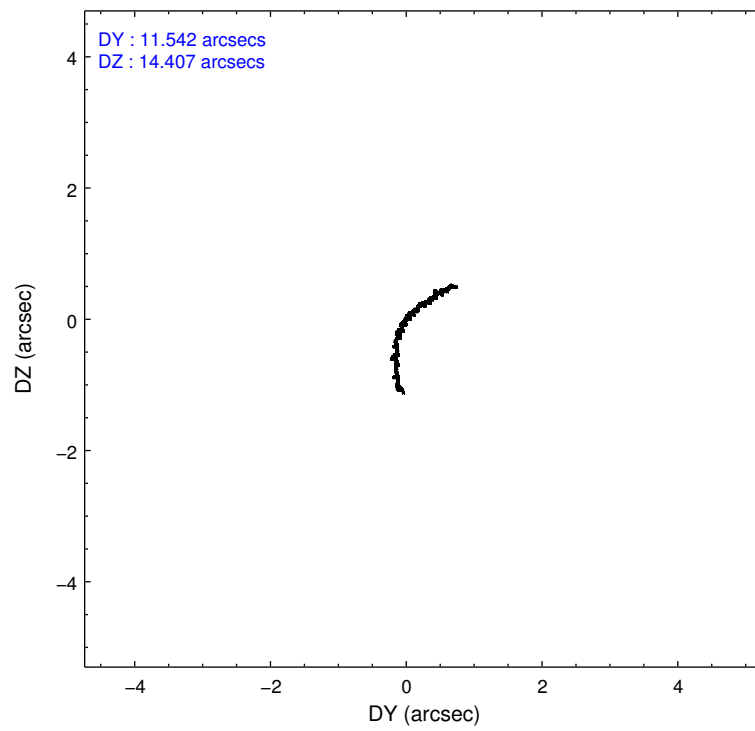
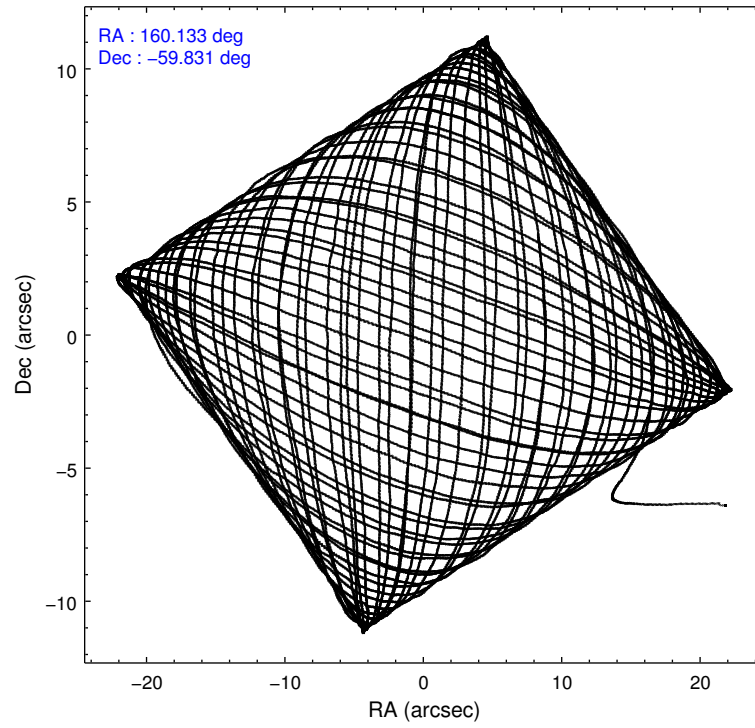
2.1.4 Events

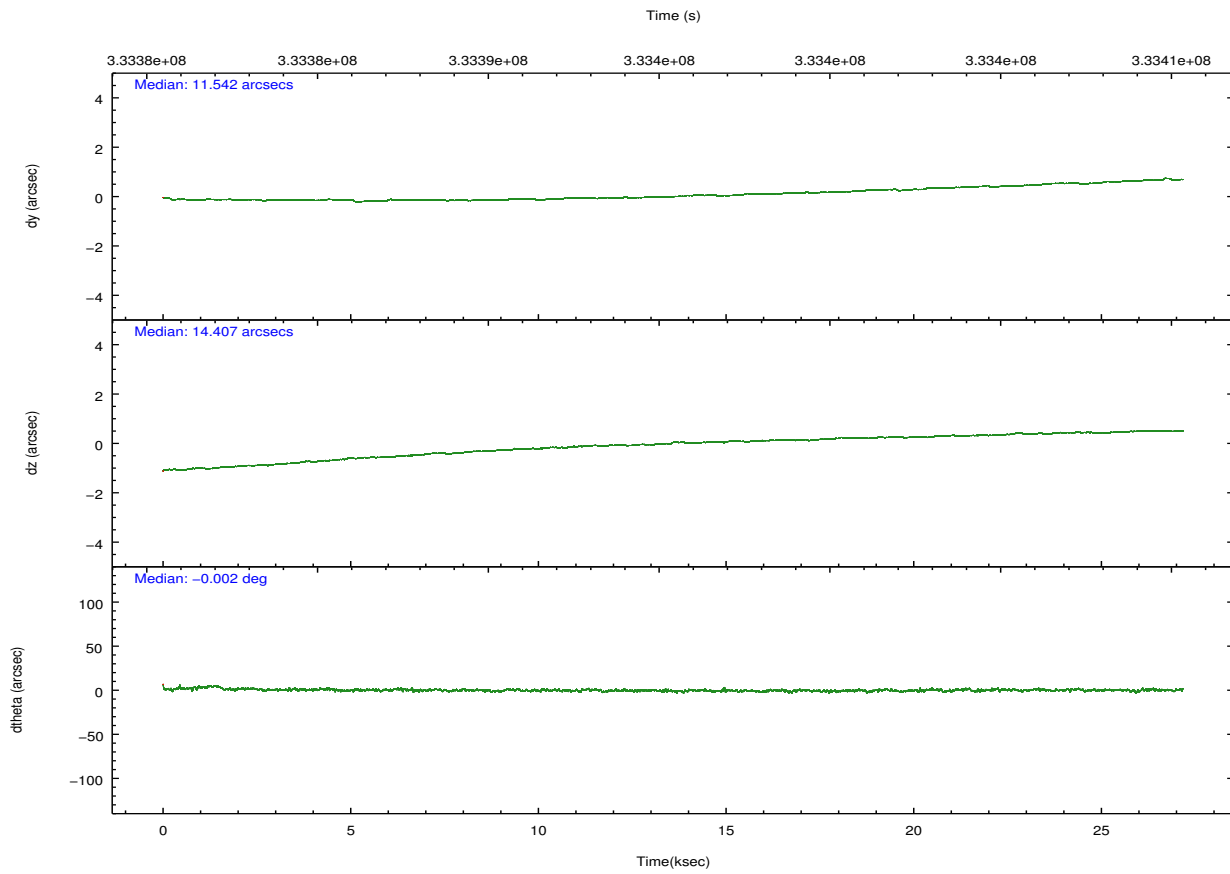
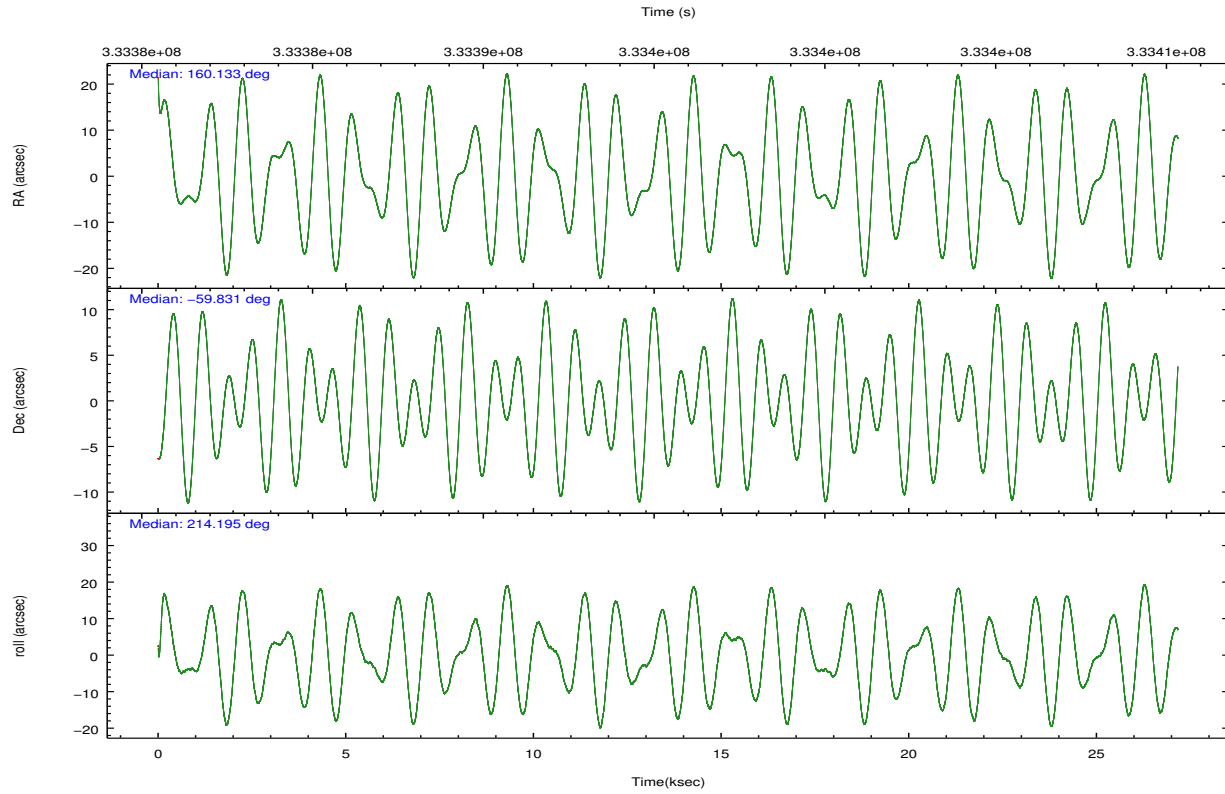
	ccd 0	ccd 1	ccd 2	ccd 3	ccd 6	ccd 7		ccd 0	ccd 1	ccd 2	ccd 3	ccd 6	ccd 7
level 1 events	193766	201793	221516	207016	218506	204971	grade 0 events	14631	22459	13691	11552	12694	13579
rejected events	165732	164845	194677	183008	192166	98497		7%	11%	6%	5%	5%	6%
rejected %	85%	81%	87%	88%	87%	48%	grade 1 events	121	177	142	136	132	287
								0%	0%	0%	0%	0%	0%
							grade 2 events	5308	5368	5209	4530	5002	23561
								2%	2%	2%	2%	2%	11%
							grade 3 events	2372	2548	2189	2207	2238	10212
								1%	1%	0%	1%	1%	4%
							grade 4 events	2148	2426	2176	2126	2221	10093
								1%	1%	0%	1%	1%	4%
							grade 5 events	6001	6705	5586	7166	7276	21040
								3%	3%	2%	3%	3%	10%
							grade 6 events	3596	4172	3595	3625	4207	49122
								1%	2%	1%	1%	1%	23%
							grade 7 events	159589	157938	188928	175674	184736	77077
								82%	78%	85%	84%	84%	37%

2.2 Compared Parameters

Parameter	Planned	Actual	Parameter	Planned	Actual
Instrument	ACIS	ACIS	Obspar format version number	7	7
Detector	ACIS-012367	ACIS-012367	Obspar file type	PREDICTED	ACTUAL
Grating	NONE	NONE	Obspar update status	NONE	UPDATED
Data mode	VFAINT	VFAINT	CCD I0 on	Y	Y
Observation mode	POINTING	POINTING	CCD I1 on	Y	Y
[deg] Pointing RA	160.156089	160.1325170702423	CCD I2 on	Y	Y
[deg] Pointing Dec	-59.806715	-59.83152951720847	CCD I3 on	Y	Y
[deg] Pointing Roll	214.011742	214.2000476362948	CCD S0 on	N	N
[mm] SIM focus pos	-0.782348	-0.7809083437167272	CCD S1 on	N	N
[mm] SIM defocus	0	0.001439871863259334	CCD S2 on	O1	Y
[mm] SIM translation stage pos	-233.592463	-233.5874344608287	CCD S3 on	O2	Y
[mm] SIM translation stage offset	0	-0.005018542100998502	CCD S4 on	N	N
[s] Observation start time (MET)	333381995.184000	333380922.00954	CCD S5 on	N	N
Observation start date	2008-07-25T14:05:30	2008-07-25T13:48:42	Number of optional ACIS chips dropped	0	0
[s] Observation end time (MET)	333408995.184000	333409850.58595	On-chip summing requested	N	N
Observation end date	2008-07-25T21:35:30	2008-07-25T21:50:50	Subarray requested	NONE	NONE
Read mode	TIMED	TIMED	Alternating exposures requested	N	N
			[s] Primary exposure time	0.000000	3.2

2.3 Aspect



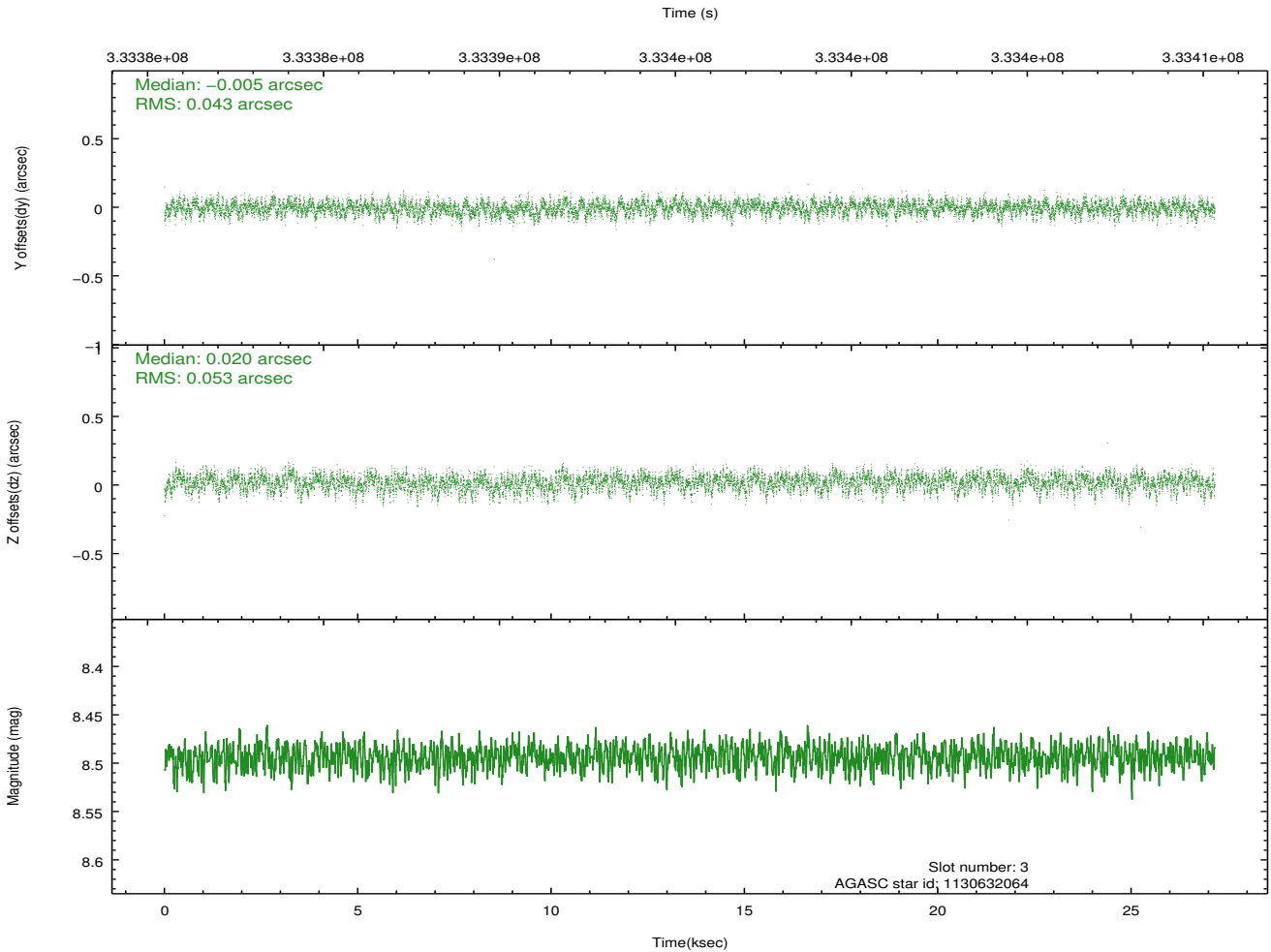
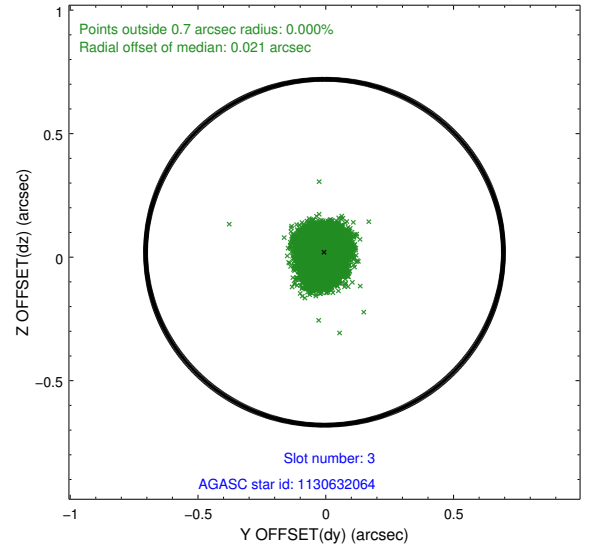
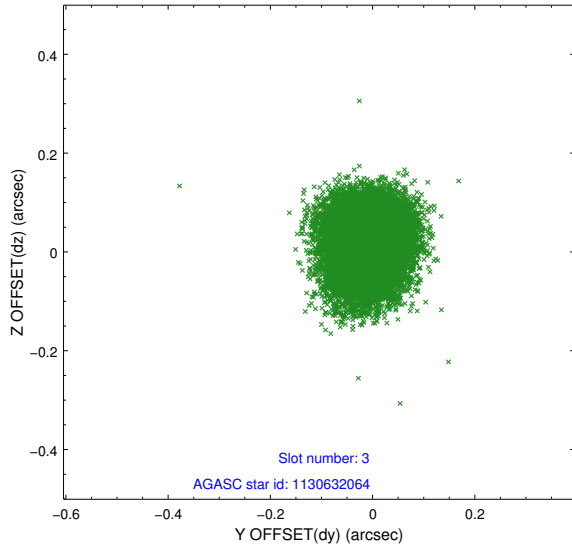


Slot Statistics

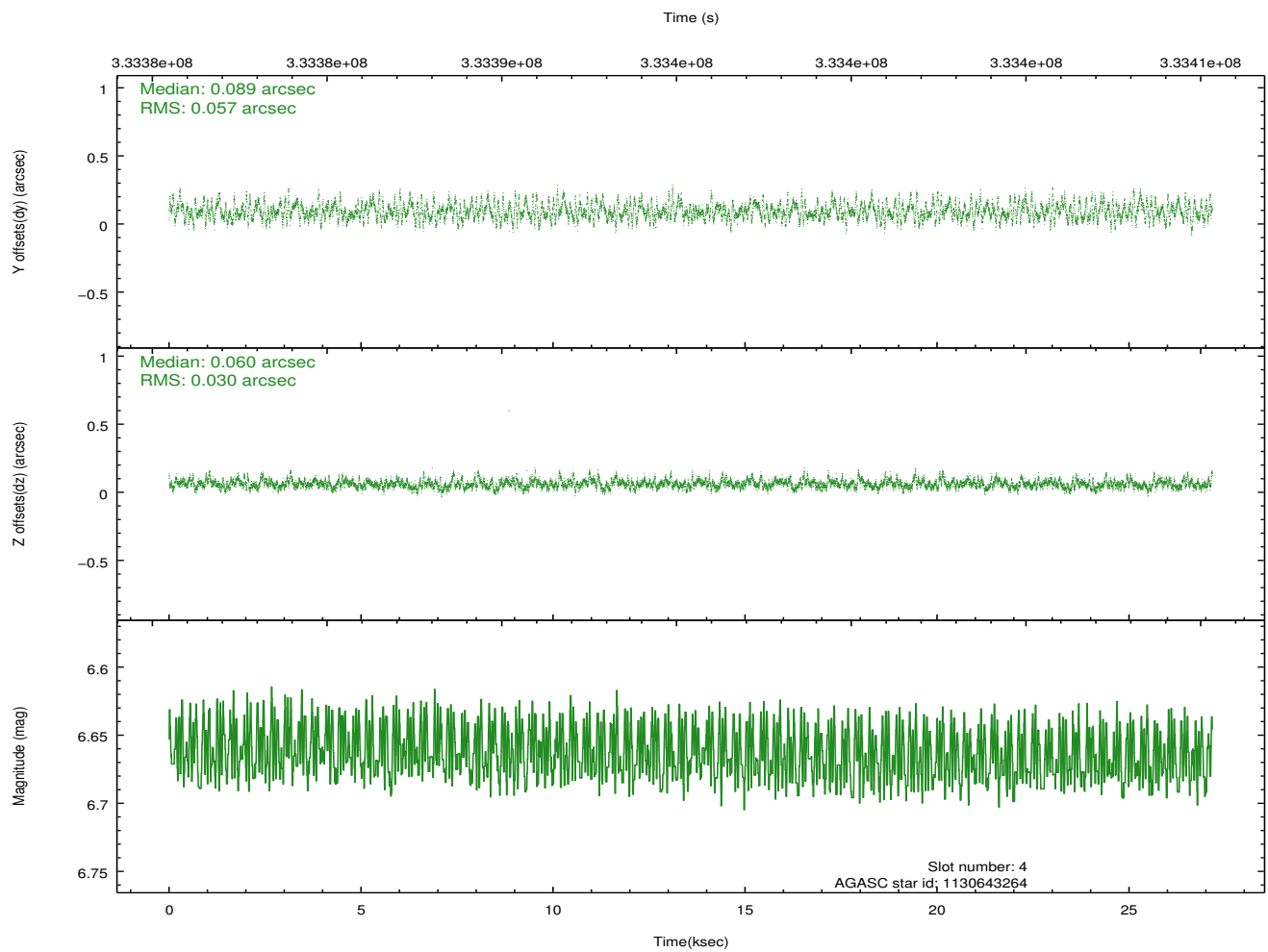
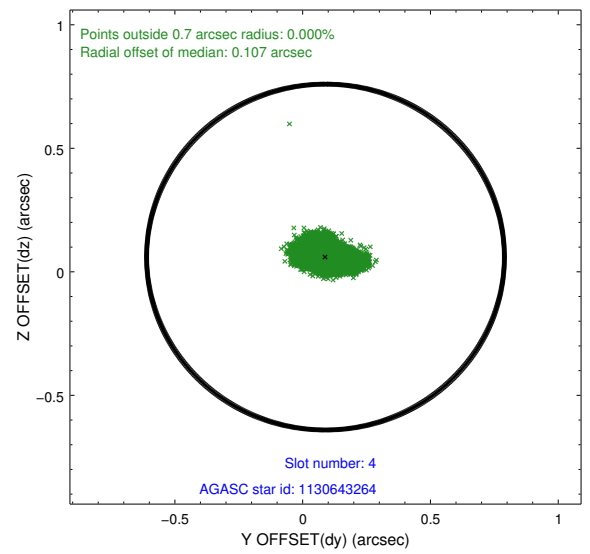
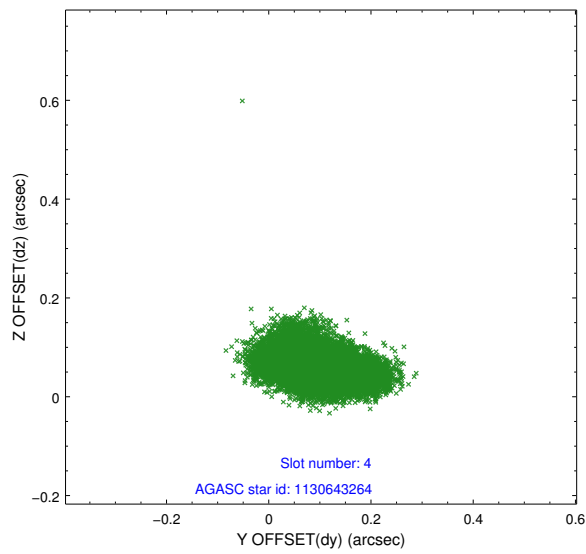
slot	status	id	mag	n_pts	med_dy	med_dz	dr1	dr2	ra	dec	mean_y	mean_z
0	FID	ACIS-I-1	7.02	6627	-0.060	0.083	0.013	0.021	0.000000	0.000000	927.84	-837.79
1	FID	ACIS-I-2	6.93	6623	-0.120	-0.081	0.010	0.017	0.000000	0.000000	-766.25	-844.45
2	FID	ACIS-I-4	6.95	6625	0.082	0.065	0.009	0.017	0.000000	0.000000	2147.83	1061.94
3	GUIDE	1130632064	8.49	13249	-0.005	0.020	0.072	0.116	160.452382	-59.130948	-1813.52	-1709.58
4	GUIDE	1130643264	6.67	13252	0.089	0.060	0.068	0.115	160.322990	-59.676912	-512.49	-217.44
5	GUIDE	1174013928	7.03	13253	-0.050	0.053	0.045	0.074	158.968200	-60.039977	2250.72	-482.34
6	GUIDE	1174020200	8.32	13246	-0.078	-0.151	0.072	0.111	160.489138	-60.487295	881.81	2362.48
7	GUIDE	1174033144	8.42	13247	0.039	0.020	0.062	0.102	161.168741	-60.059230	-991.82	1782.95

2.4 Star Slots

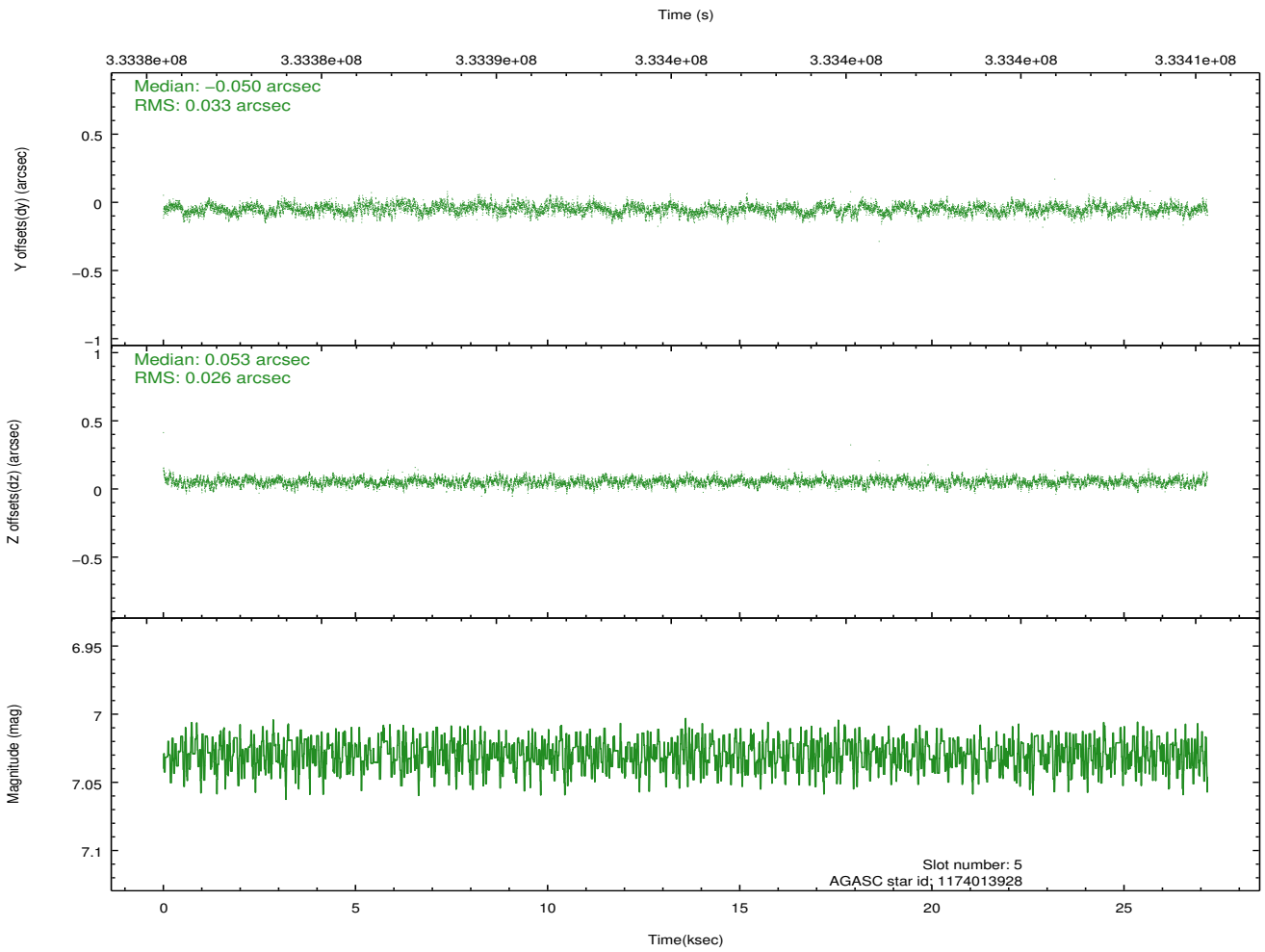
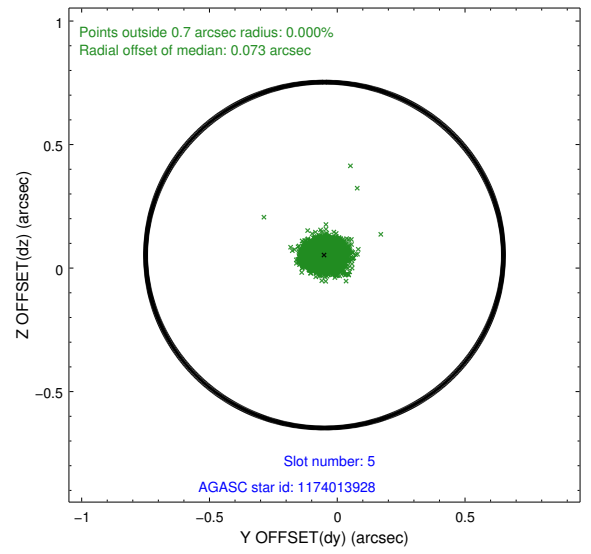
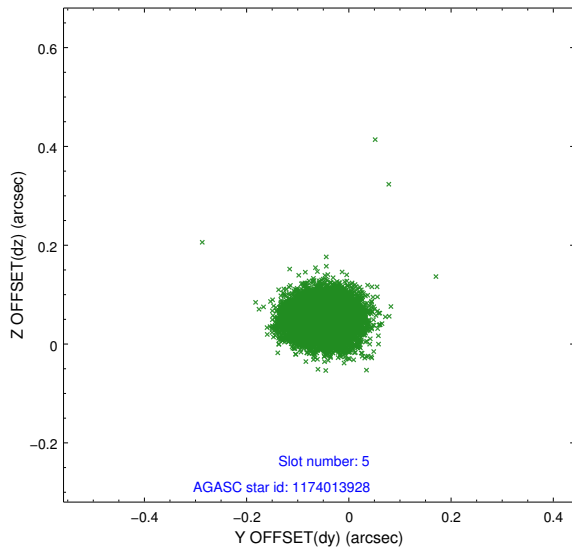
2.4.1 Slot 3



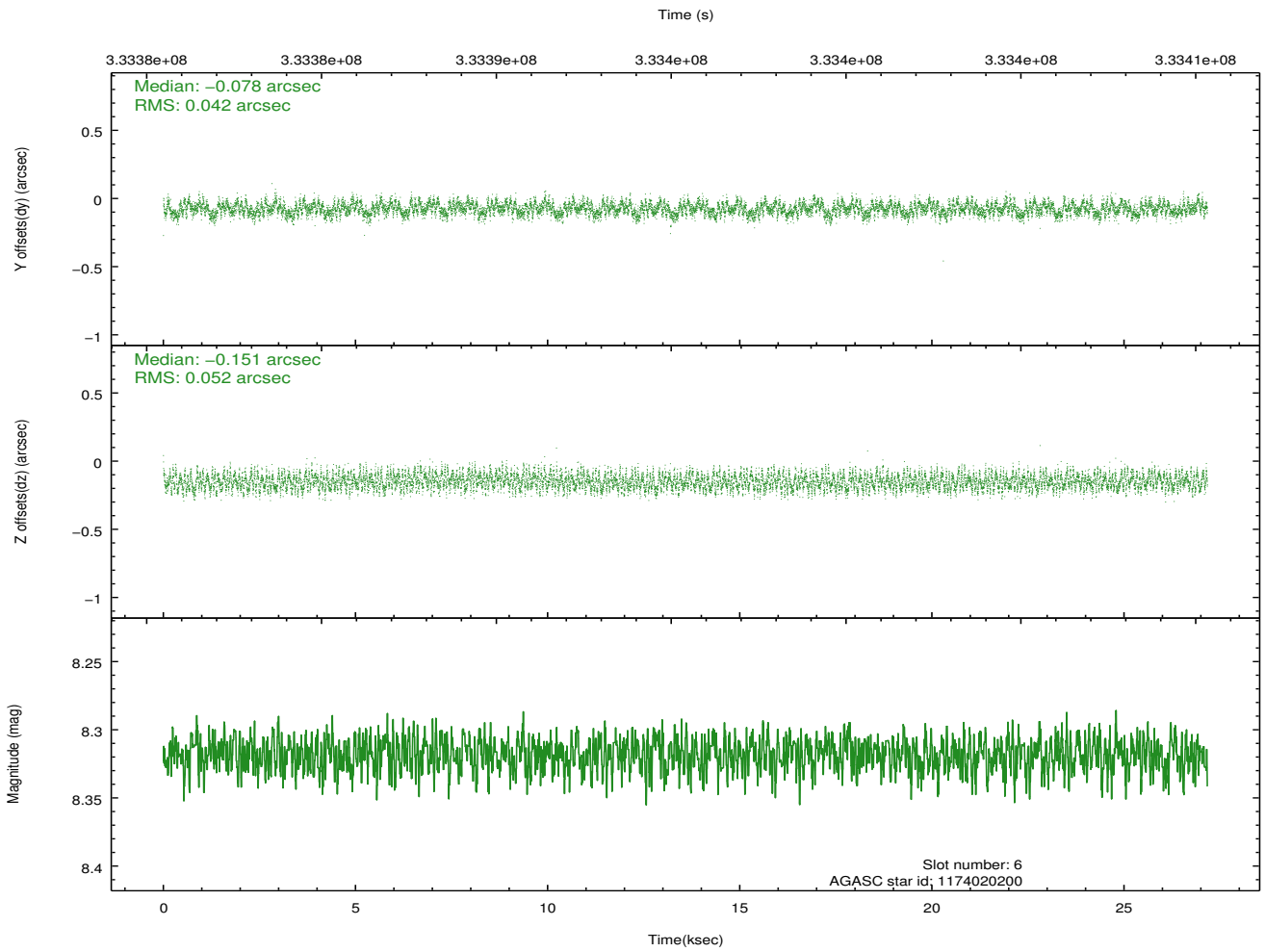
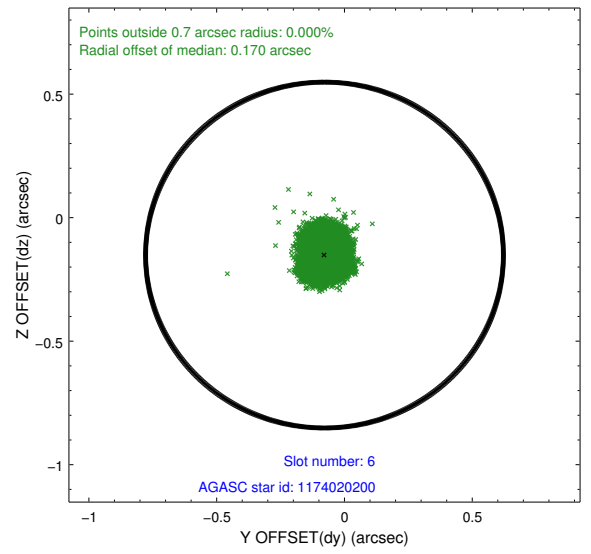
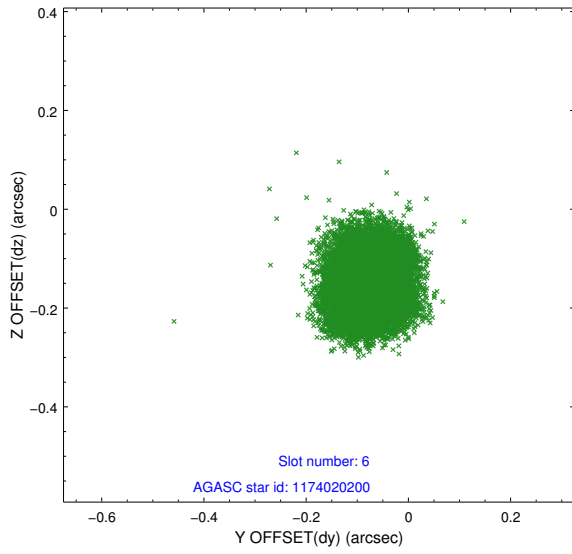
2.4.2 Slot 4



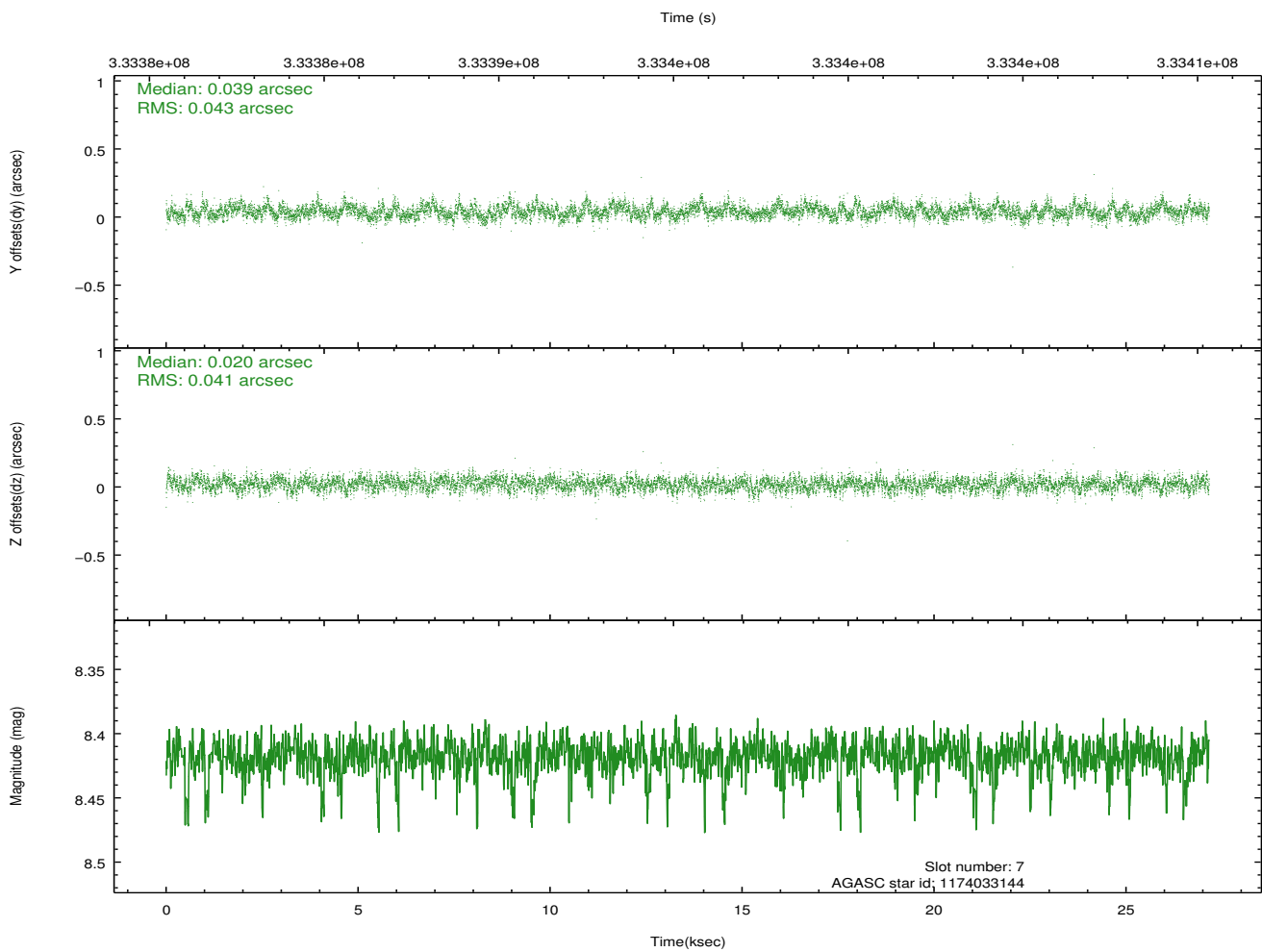
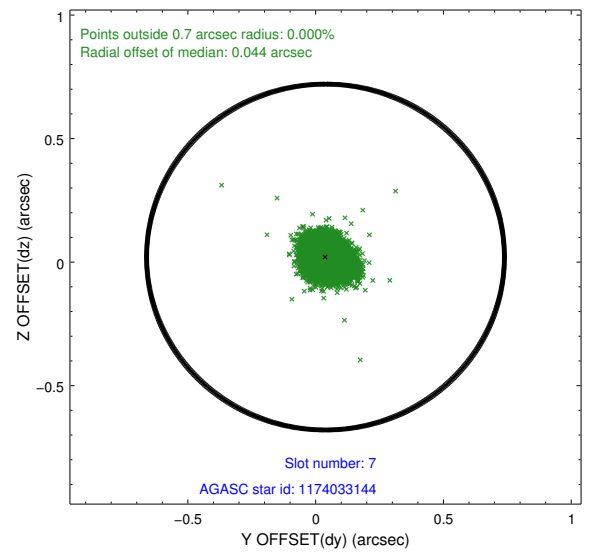
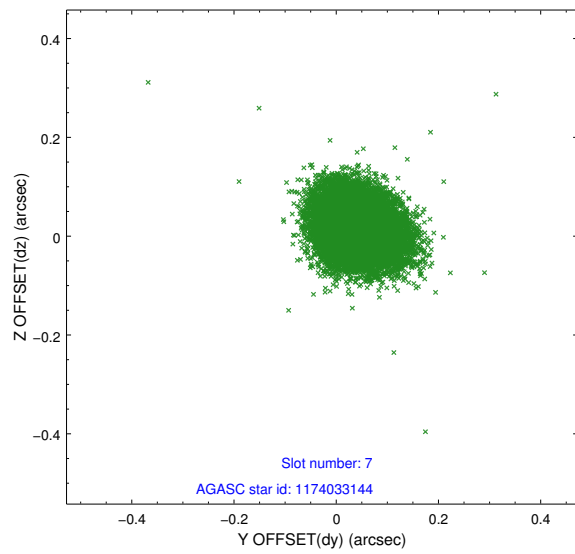
2.4.3 Slot 5



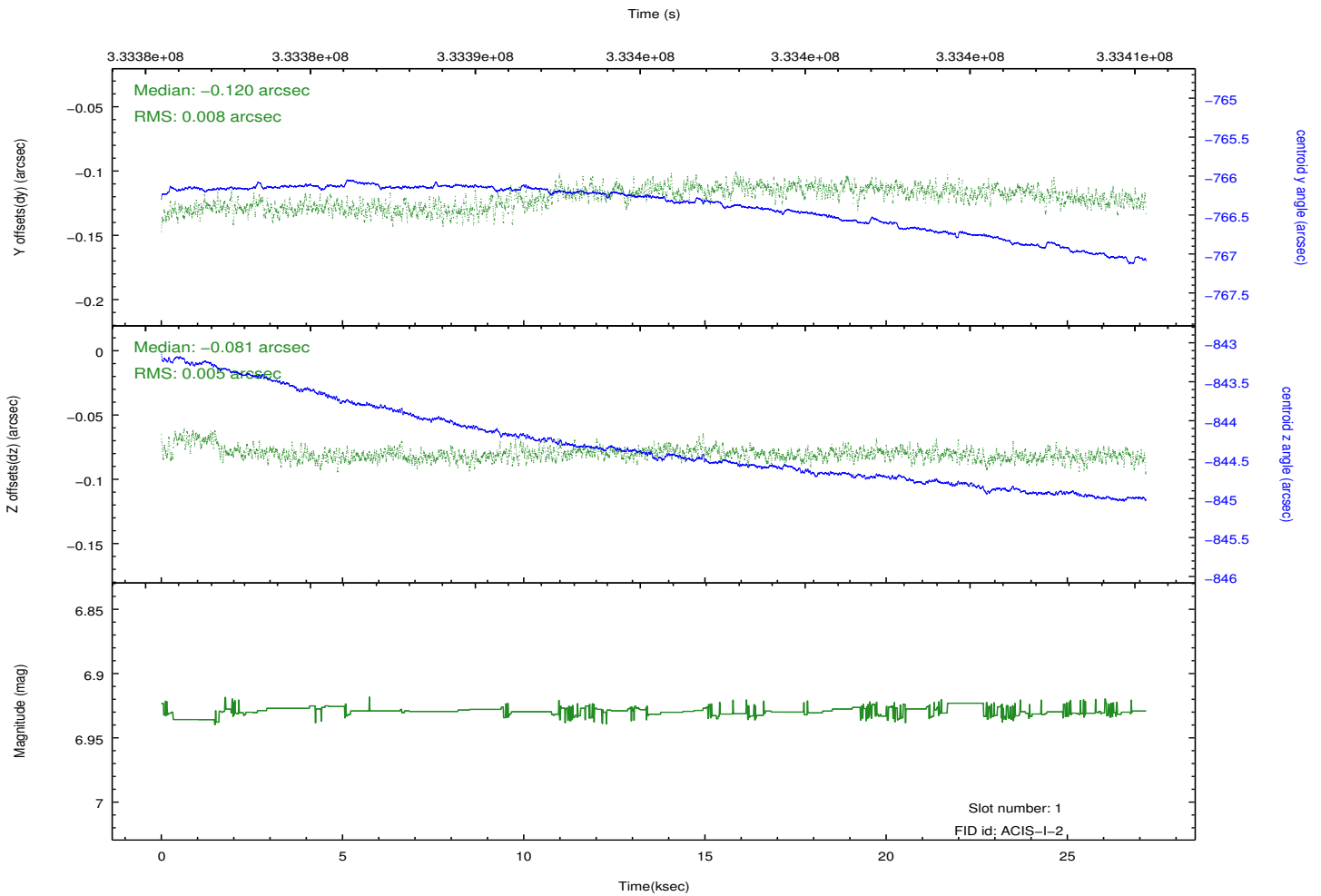
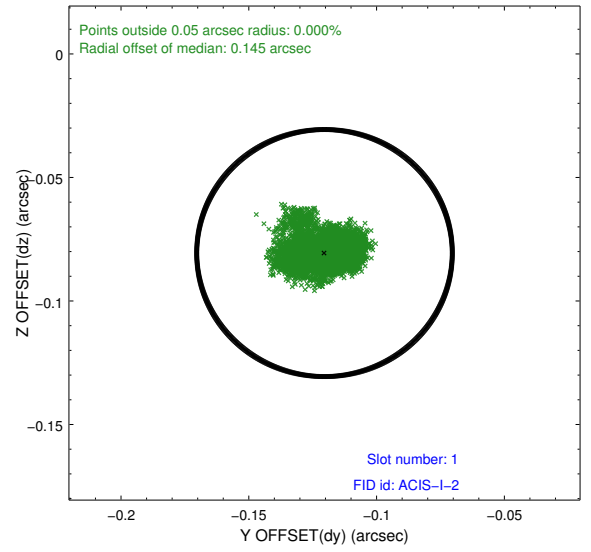
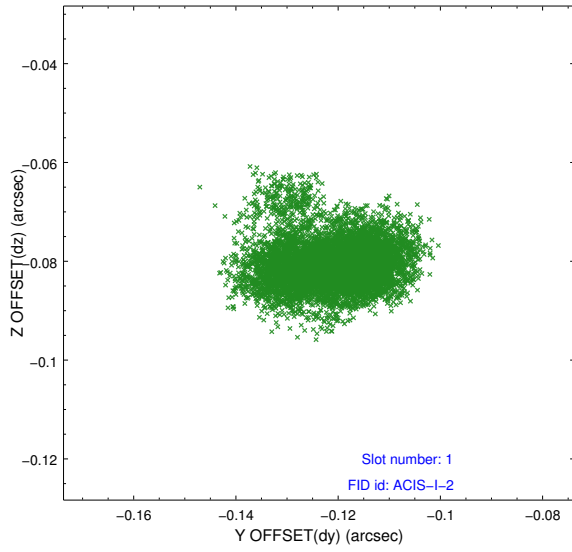
2.4.4 Slot 6



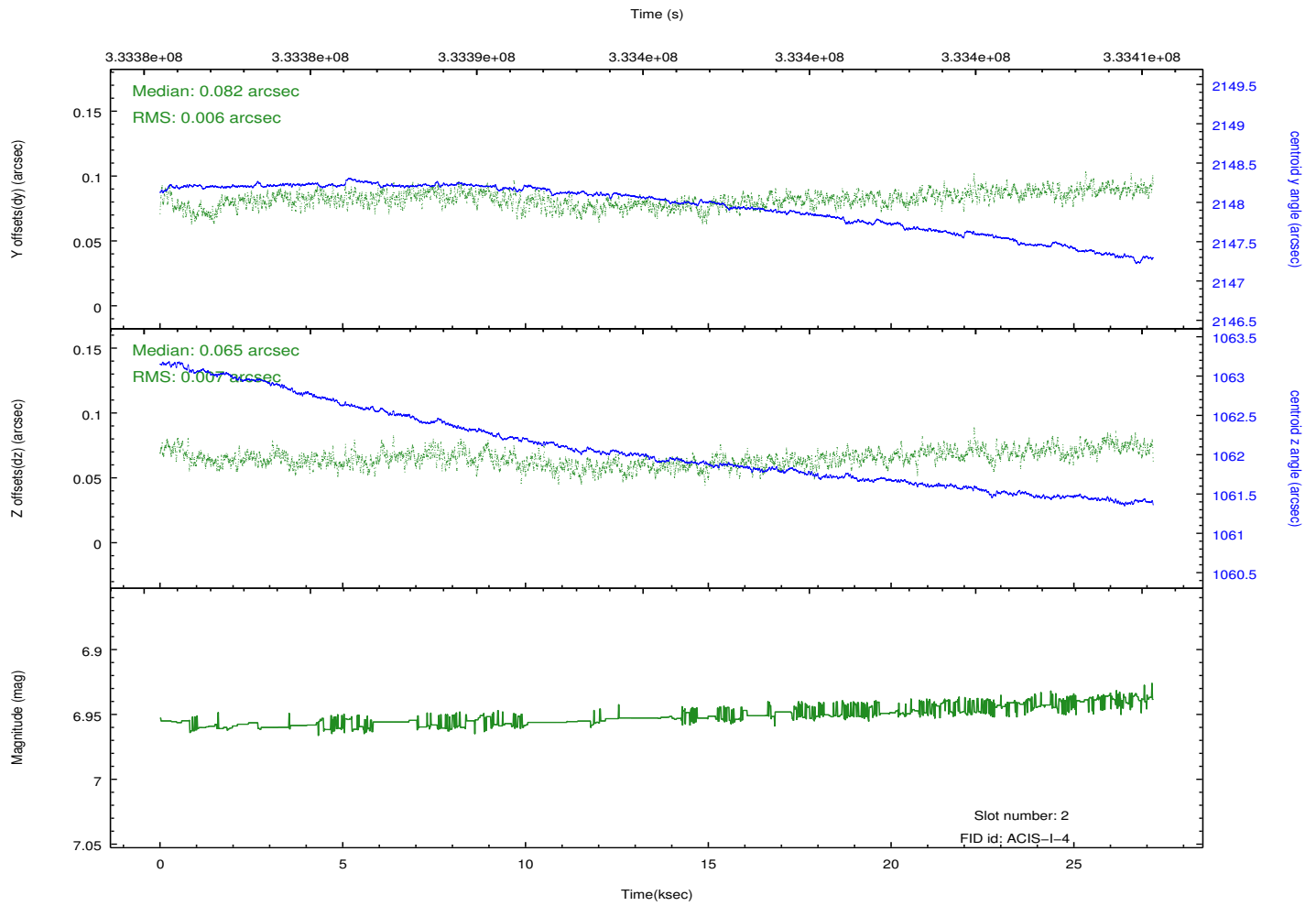
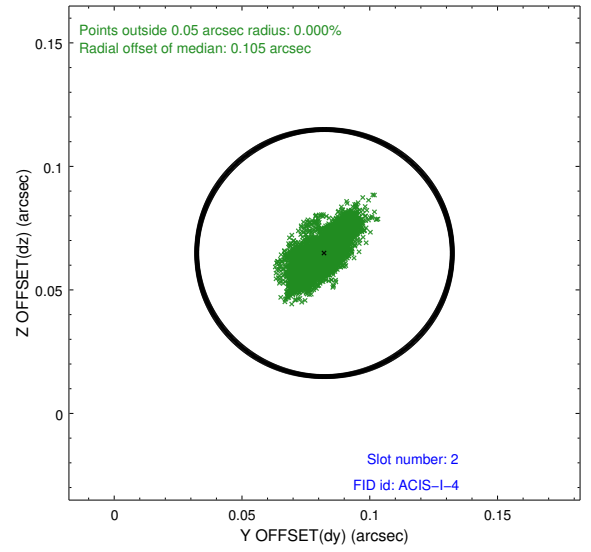
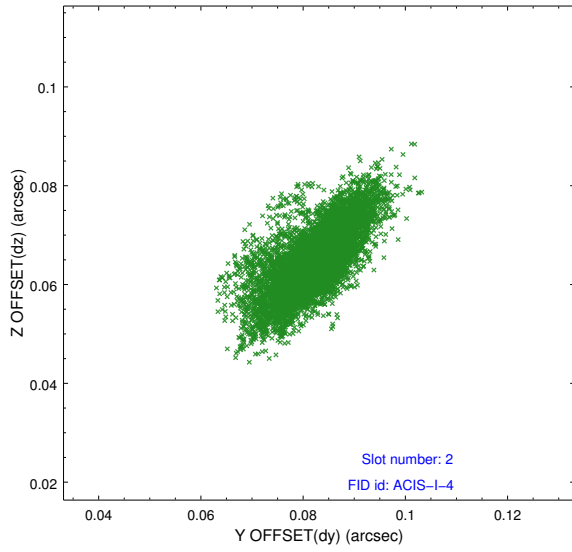
2.4.5 Slot 7



2.5.2 Slot 1



2.5.3 Slot 2



A Summary

A.1 Status

V&V Scientist	Beth Sundheim
V&V Date (YYYY-MM-DD)	2012.05.25
V&V Edition	1
V&V Disposition and Status	OK
V&V Charge Time	27.1583589

A.2 Comments