

# V&V Reference Report

## L2 ASCDS Version : 8.4.5

Observation 9919 - L2 Version 2  
Chandra X-Ray Center

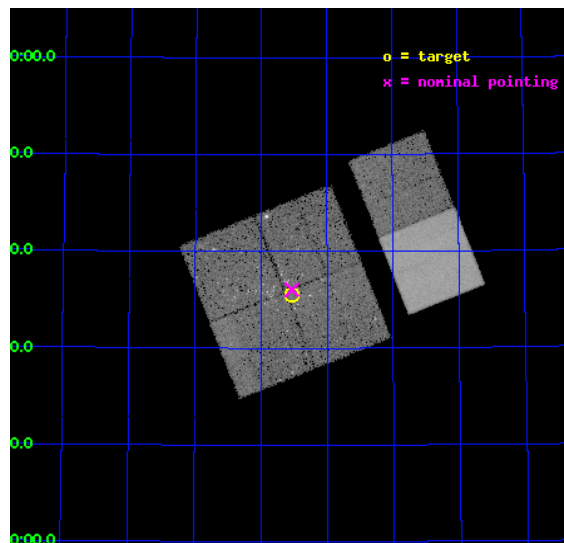
L2 Processing Date : Jun 6 2012

## Contents

<b>1</b>	<b>Front</b>	<b>2</b>
<b>2</b>	<b>OBI</b>	<b>3</b>
2.1	OBI . . . . .	3
2.1.1	Images . . . . .	3
2.1.2	Bias . . . . .	3
2.1.3	Parameters . . . . .	4
2.1.4	Events . . . . .	4
2.2	Compared Parameters . . . . .	5
2.3	Aspect . . . . .	6
2.4	Star Slots . . . . .	9
2.4.1	Slot 3 . . . . .	9
2.4.2	Slot 4 . . . . .	10
2.4.3	Slot 5 . . . . .	11
2.4.4	Slot 6 . . . . .	12
2.4.5	Slot 7 . . . . .	13
2.5	FID Slots . . . . .	14
2.5.1	Slot 0 . . . . .	14
2.5.2	Slot 1 . . . . .	15
2.5.3	Slot 2 . . . . .	16
<b>A</b>	<b>Summary</b>	<b>17</b>
A.1	Status . . . . .	17
A.2	Comments . . . . .	17

# 1 Front

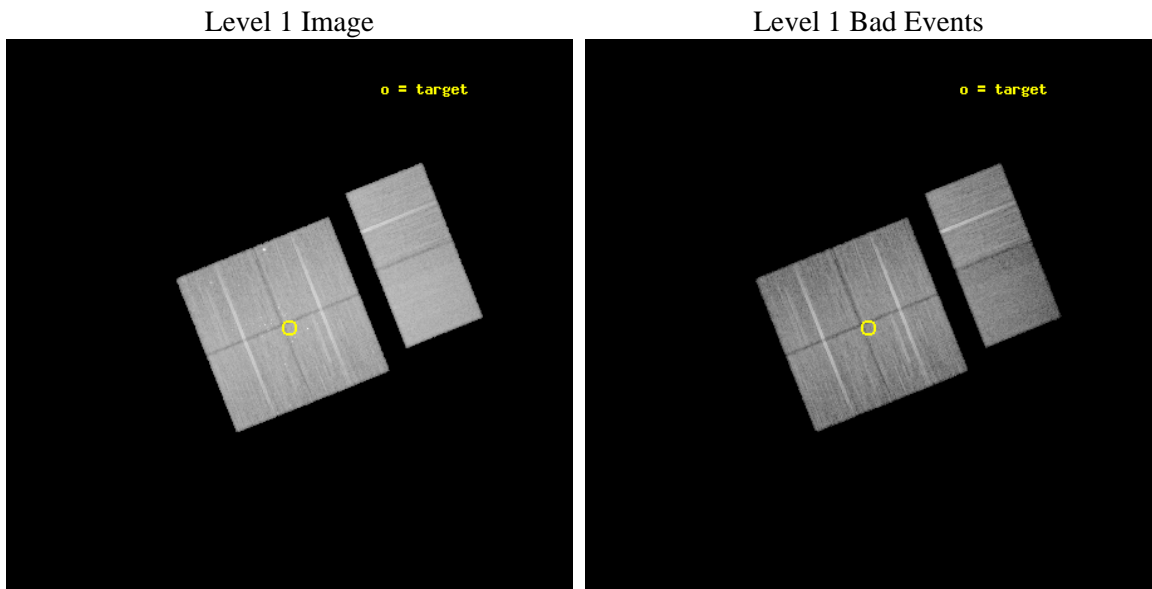
seq_num	200535	Sequence number
obs_id	9919	Observation id
title	Evolution of Young Stars in the Large Massive Cluster Cep OB3b	Pro
observer	Mr. Thomas Allen	Principal investigator
object	V454 Cep sub-cluster	Source name
dtcycle	0	&#160
cycle	P	events from which exps? Prim/Second/Both
ra_targ	343.382083	Observer's specified target RA [deg]
dec_targ	62.592611	Observer's specified target Dec [deg]
ra_nom	343.38343827146	Nominal RA [deg]
dec_nom	62.600670254598	Nominal Dec [deg]
roll_nom	68.207480559602	Nominal Roll [deg]
revision	2	Processing version of data
ontime	22750.619725883	Sum of GTIs [s]
livetime	22462.537680135	Livetime [s]
ontime0	22753.737446666	Sum of GTIs [s]
ontime1	22750.537496507	Sum of GTIs [s]
ontime2	22750.578546524	Sum of GTIs [s]
ontime3	22750.619725883	Sum of GTIs [s]
ontime6	22750.701825738	Sum of GTIs [s]
ontime7	22753.901586831	Sum of GTIs [s]
l2events	192535	Number of level 2 events



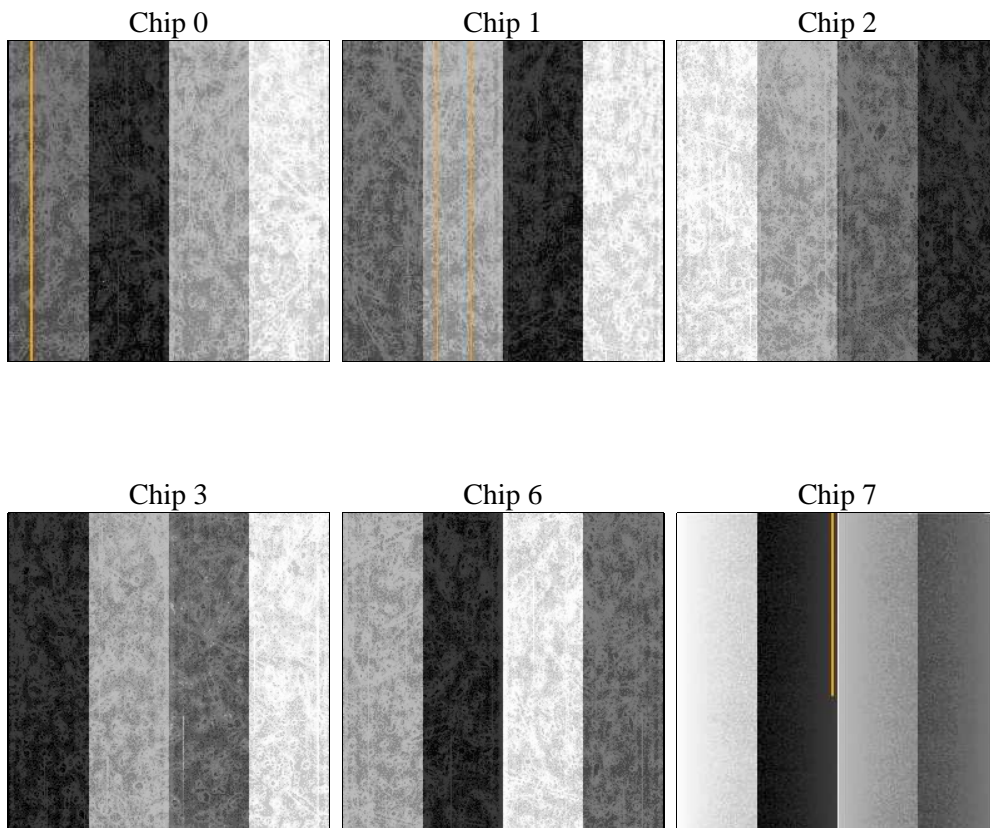
## 2 OBI

### 2.1 OBI

#### 2.1.1 Images



#### 2.1.2 Bias



### 2.1.3 Parameters

obi_num	0	Obi number	sched_exp_time	23000.000000	[s] Scheduled observation exposure time
ascdsver	8.4.5	Processing system revision	ontime	22750.619725883	Sum of GTIs [s]
caldsver	4.4.10	&#160	ontime0	22753.737446666	Sum of GTIs [s]
date	2012-06-07T00:12:22	Date and time of file creation	ontime1	22750.537496507	Sum of GTIs [s]
revision	2	Processing version of data	ontime2	22750.578546524	Sum of GTIs [s]
			ontime3	22750.619725883	Sum of GTIs [s]
			ontime6	22750.701825738	Sum of GTIs [s]
			ontime7	22753.901586831	Sum of GTIs [s]
			l1events	1195291	Number of level 1 events

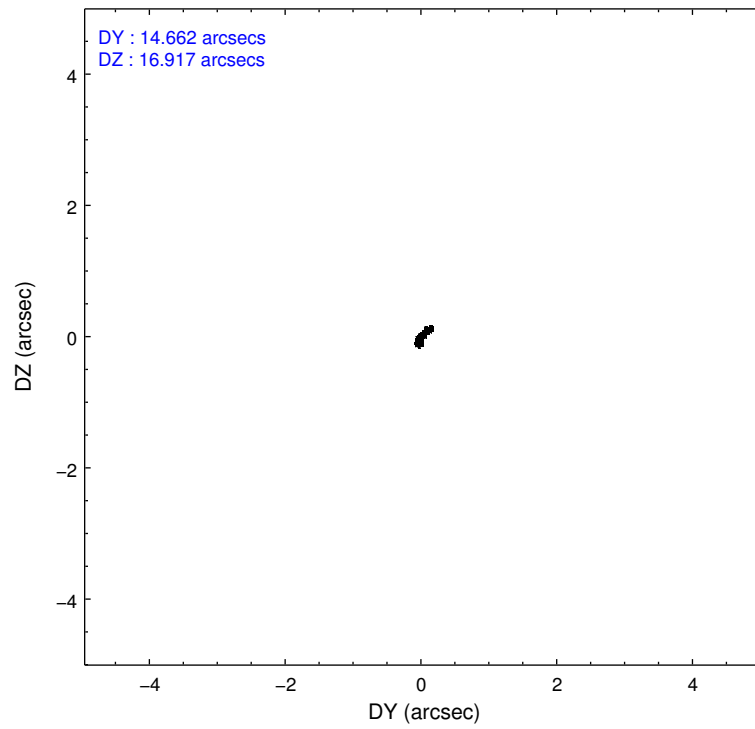
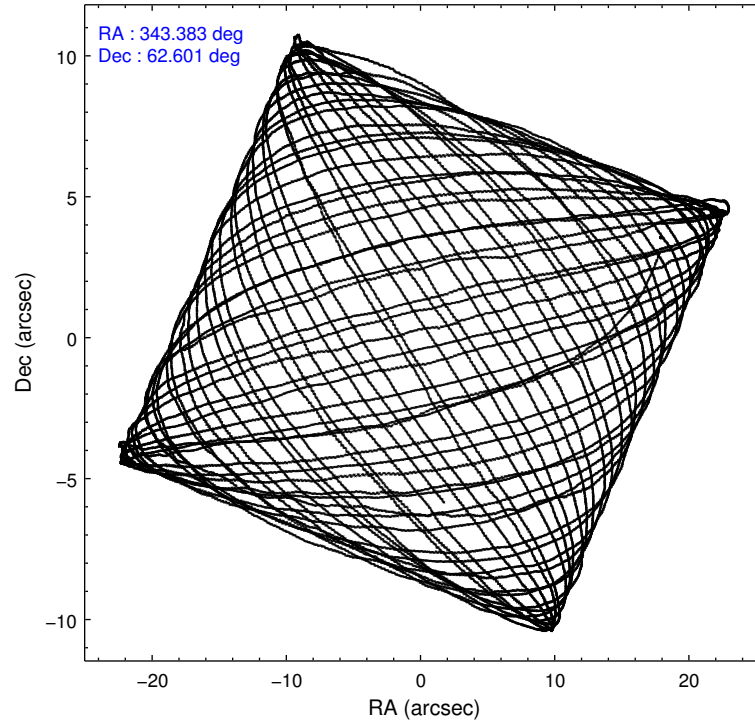
### 2.1.4 Events

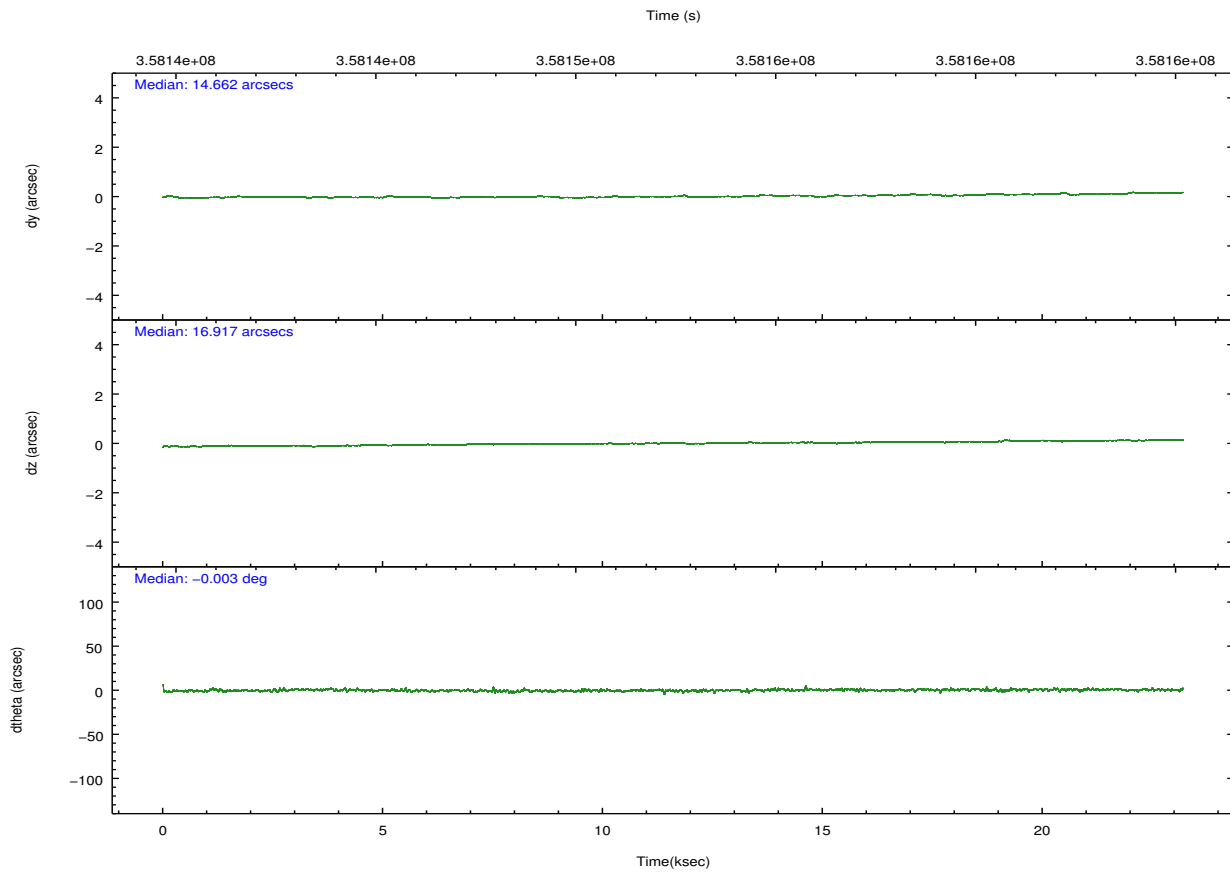
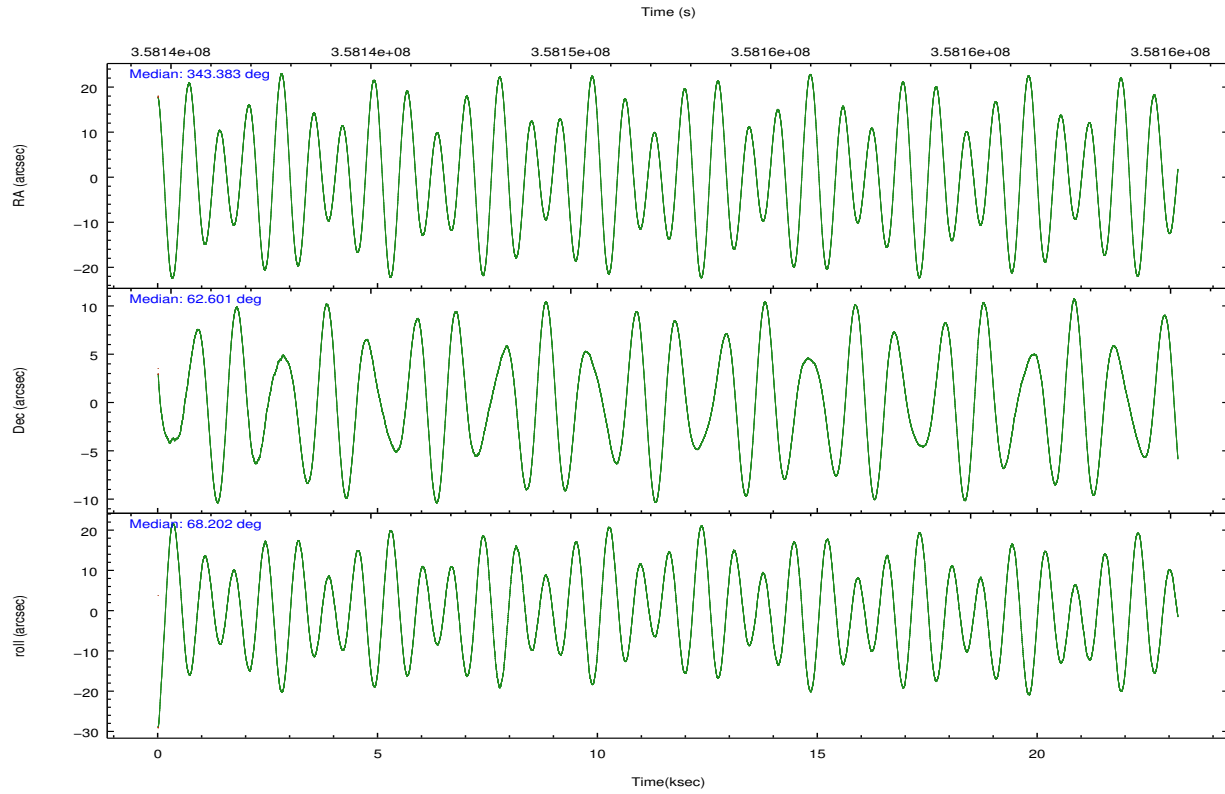
	ccd 0	ccd 1	ccd 2	ccd 3	ccd 6	ccd 7		ccd 0	ccd 1	ccd 2	ccd 3	ccd 6	ccd 7
level 1 events	184546	184474	202637	196680	203807	223147	grade 0 events	9809	9184	9235	8342	7190	9252
rejected events	161056	161008	180016	175830	182945	121290		5%	4%	4%	4%	3%	4%
rejected %	87%	87%	88%	89%	89%	54%	grade 1 events	128	111	143	146	118	283
								0%	0%	0%	0%	0%	0%
							grade 2 events	5200	5195	5193	4349	4799	20666
								2%	2%	2%	2%	2%	9%
							grade 3 events	2350	2309	2149	2161	2127	9533
								1%	1%	1%	1%	1%	4%
							grade 4 events	2179	2296	2176	2094	2199	9227
								1%	1%	1%	1%	1%	4%
							grade 5 events	7050	7802	6771	8188	8201	23375
								3%	4%	3%	4%	4%	10%
							grade 6 events	3952	4485	3872	3907	4548	53191
								2%	2%	1%	1%	2%	23%
							grade 7 events	153878	153092	173098	167493	174625	97620
								83%	82%	85%	85%	85%	43%

## 2.2 Compared Parameters

Parameter	Planned	Actual	Parameter	Planned	Actual
Instrument	ACIS	ACIS	Obspar format version number	7	7
Detector	ACIS-012367	ACIS-012367	Obspar file type	PREDICTED	ACTUAL
Grating	NONE	NONE	Obspar update status	NONE	UPDATED
Data mode	VFAINT	VFAINT	CCD I0 on	Y	Y
Observation mode	POINTING	POINTING	CCD I1 on	Y	Y
[deg] Pointing RA	343.392215	343.3834382714649	CCD I2 on	Y	Y
[deg] Pointing Dec	62.573474	62.60067025459819	CCD I3 on	Y	Y
[deg] Pointing Roll	67.991005	68.20748055960244	CCD S0 on	N	N
[mm] SIM focus pos	-0.782348	-0.7809083437167272	CCD S1 on	N	N
[mm] SIM defocus	0	0.001439871863259334	CCD S2 on	O1	Y
[mm] SIM translation stage pos	-233.592463	-233.5874344608287	CCD S3 on	O2	Y
[mm] SIM translation stage offset	0	-0.005018542100998502	CCD S4 on	N	N
[s] Observation start time (MET)	358141035.184000	358140567.78059	CCD S5 on	N	N
Observation start date	2009-05-08T03:36:09	2009-05-08T03:29:27	Number of optional ACIS chips dropped	0	0
[s] Observation end time (MET)	358164035.184000	358164650.66929	On-chip summing requested	N	N
Observation end date	2009-05-08T09:59:29	2009-05-08T10:10:50	Subarray requested	NONE	NONE
Read mode	TIMED	TIMED	Alternating exposures requested	N	N
			[s] Primary exposure time	0.000000	3.2

## 2.3 Aspect



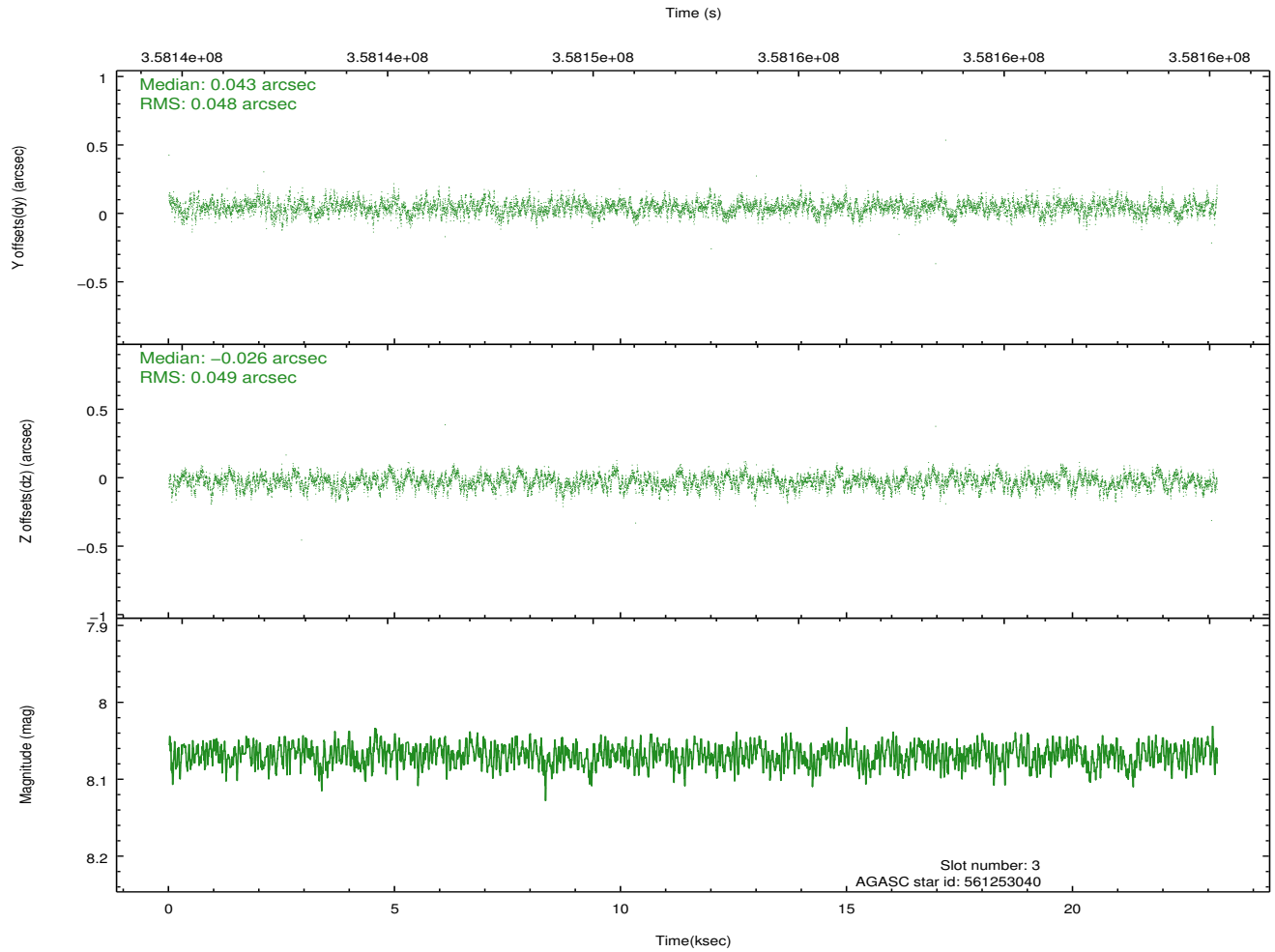
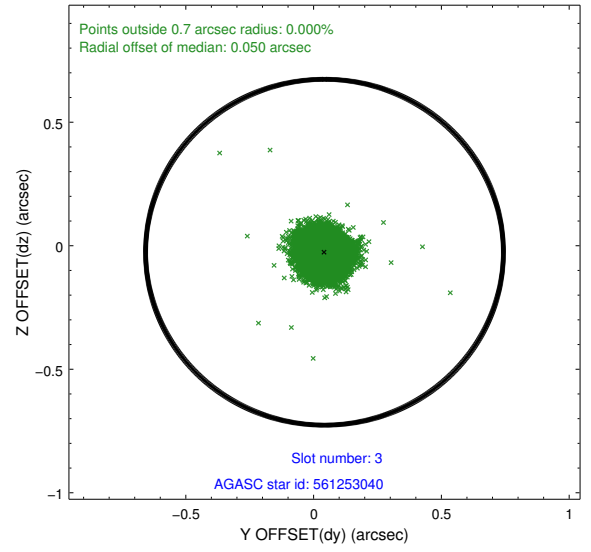
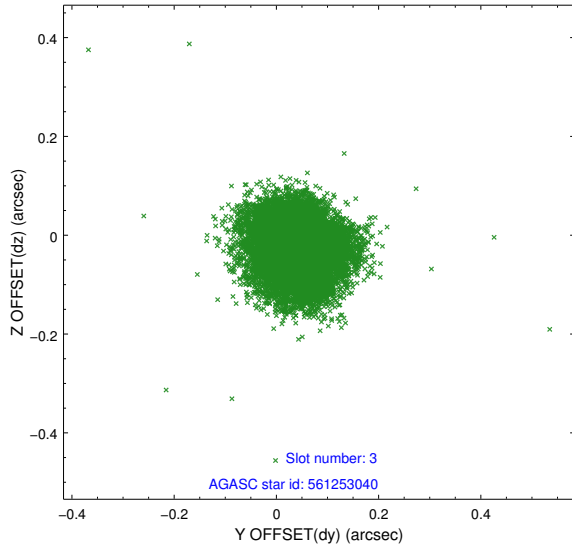


### Slot Statistics

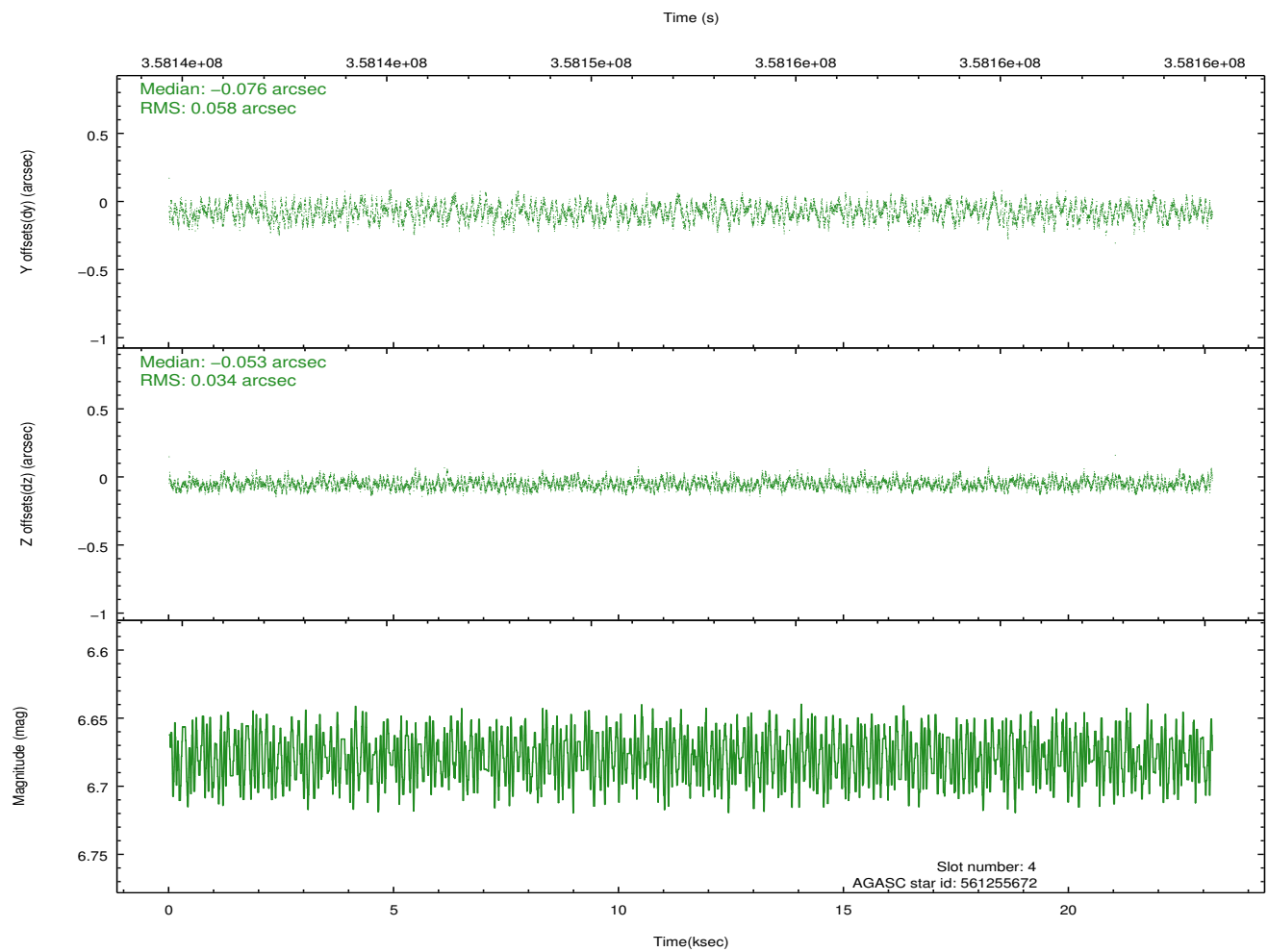
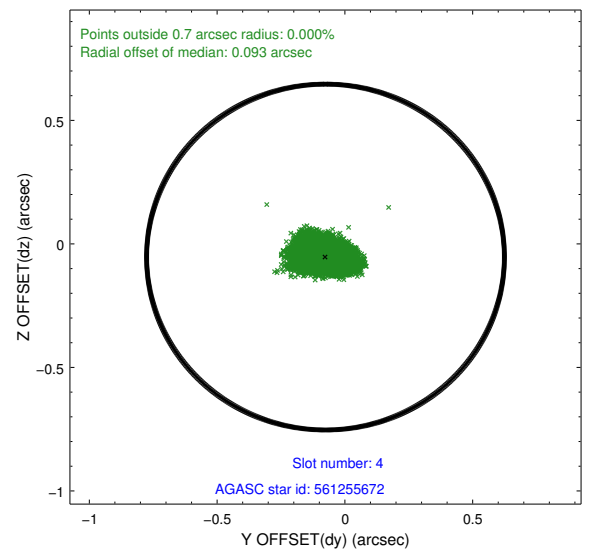
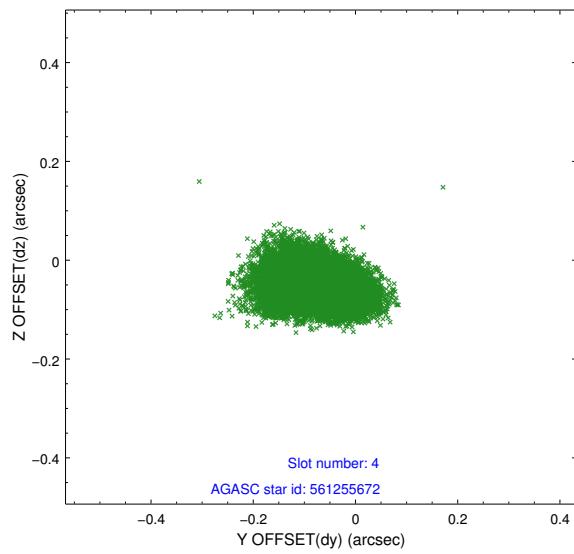
slot	status	id	mag	n_pts	med_dy	med_dz	dr1	dr2	ra	dec	mean_y	mean_z
0	FID	ACIS-I-1	7.01	5657	-0.029	-0.038	0.009	0.016	0.000000	0.000000	924.77	-840.59
1	FID	ACIS-I-2	6.94	5656	-0.174	-0.045	0.012	0.018	0.000000	0.000000	-769.39	-847.13
2	FID	ACIS-I-4	6.94	5657	0.105	0.150	0.011	0.018	0.000000	0.000000	2144.70	1059.34
3	GUIDE	561253040	8.07	11312	0.043	-0.026	0.073	0.116	343.127313	62.440534	-607.95	230.15
4	GUIDE	561255672	6.68	11310	-0.076	-0.053	0.073	0.113	342.872792	62.972182	1015.10	1326.97
5	GUIDE	561255768	8.55	11303	0.089	0.191	0.067	0.110	344.276311	63.031635	2081.09	-716.24
6	GUIDE	561256256	8.46	11307	-0.086	-0.225	0.060	0.100	343.830327	63.161325	2231.47	133.91
7	GUIDE	561256368	8.09	11307	0.031	0.112	0.070	0.111	343.926918	62.306341	-552.32	-1188.16

## 2.4 Star Slots

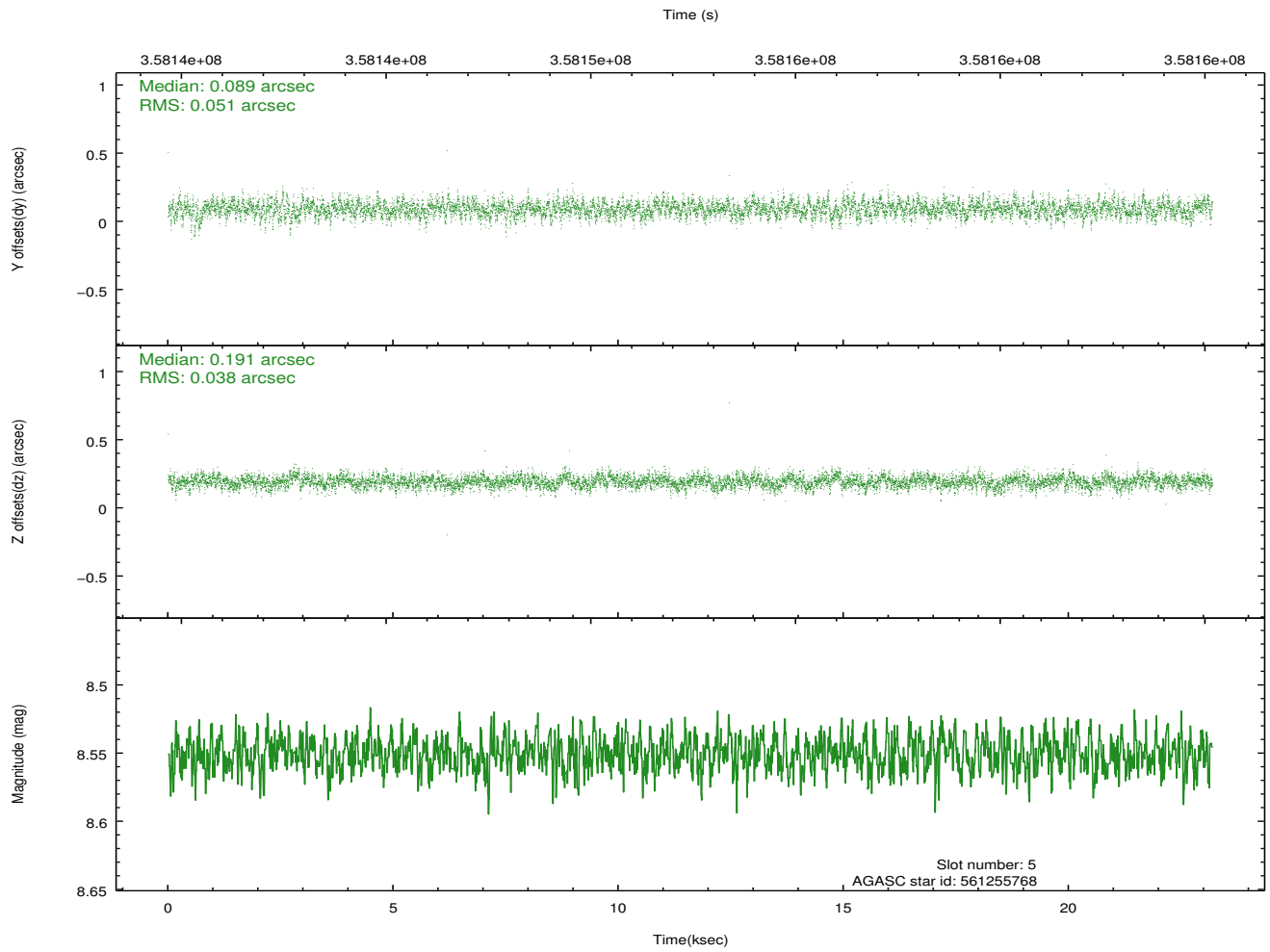
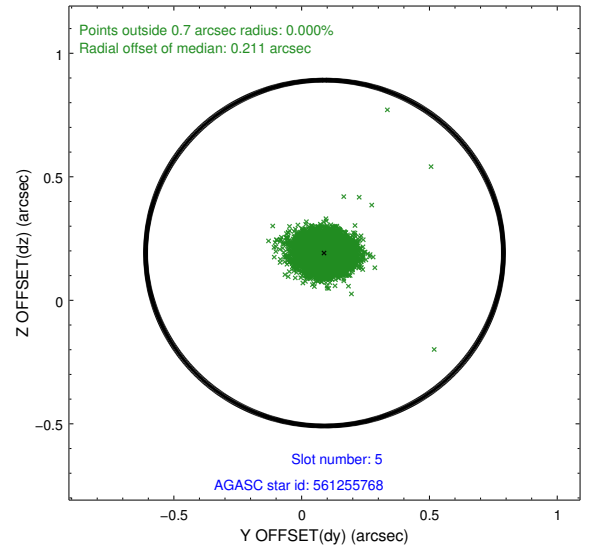
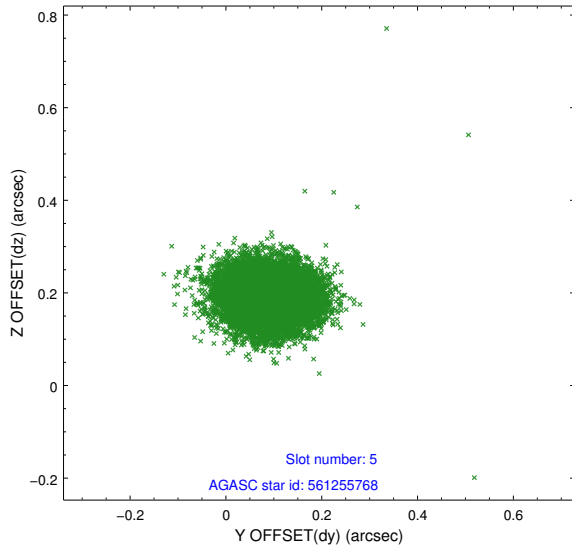
### 2.4.1 Slot 3



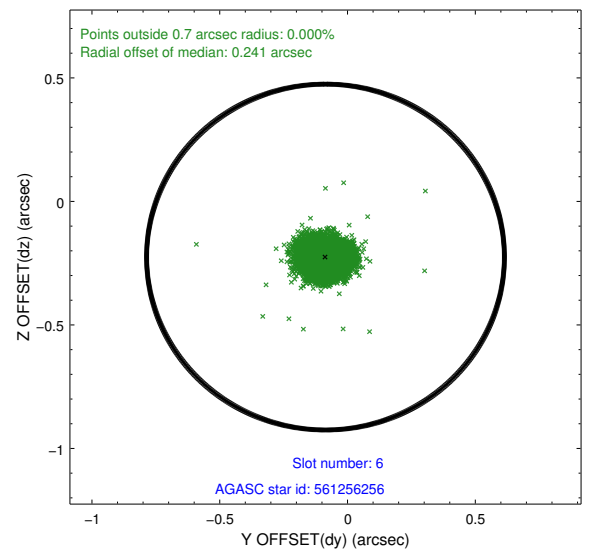
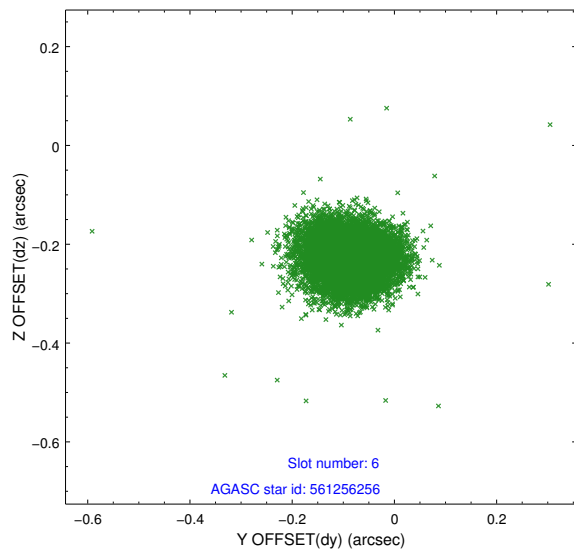
## 2.4.2 Slot 4



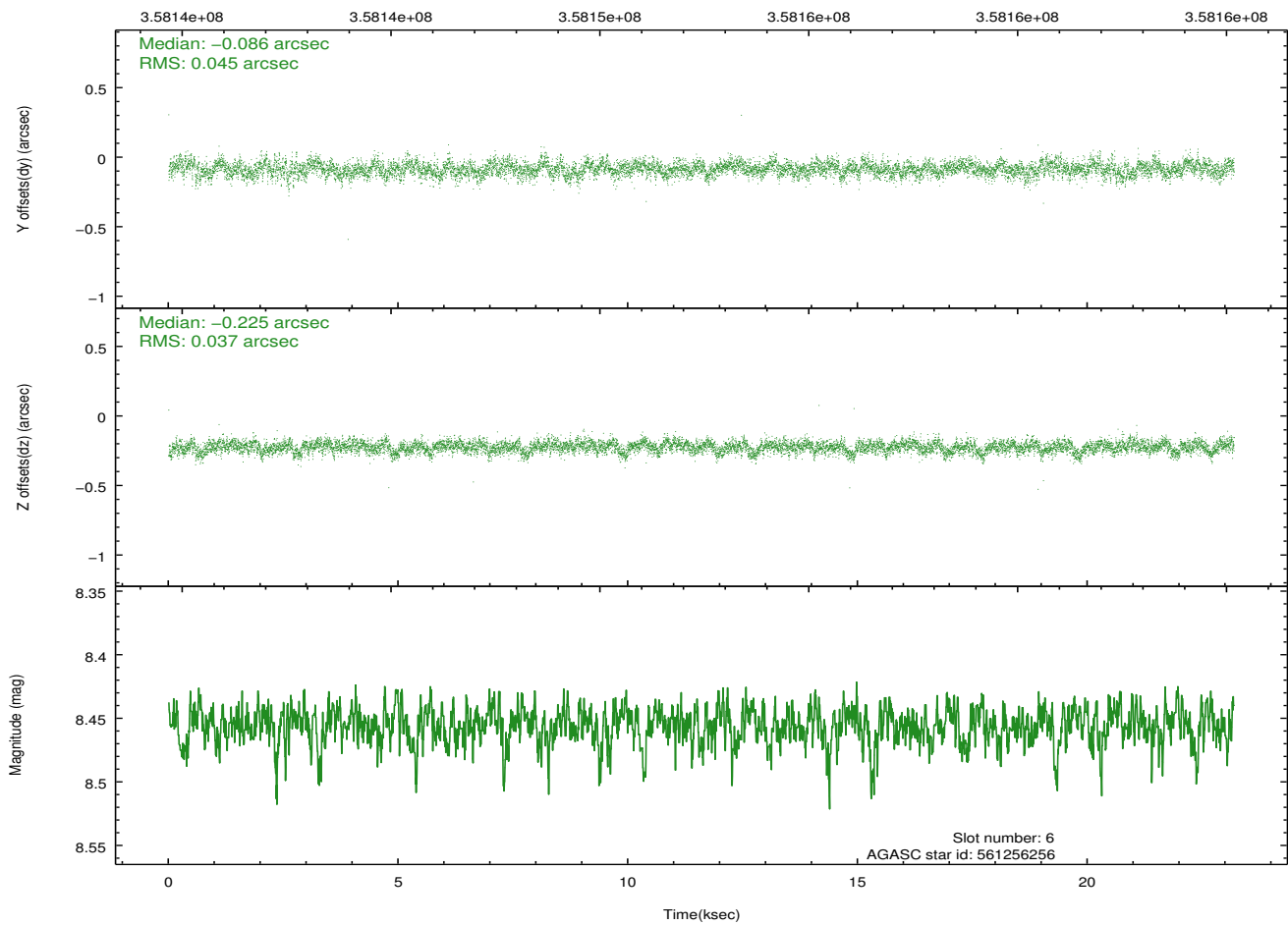
### 2.4.3 Slot 5



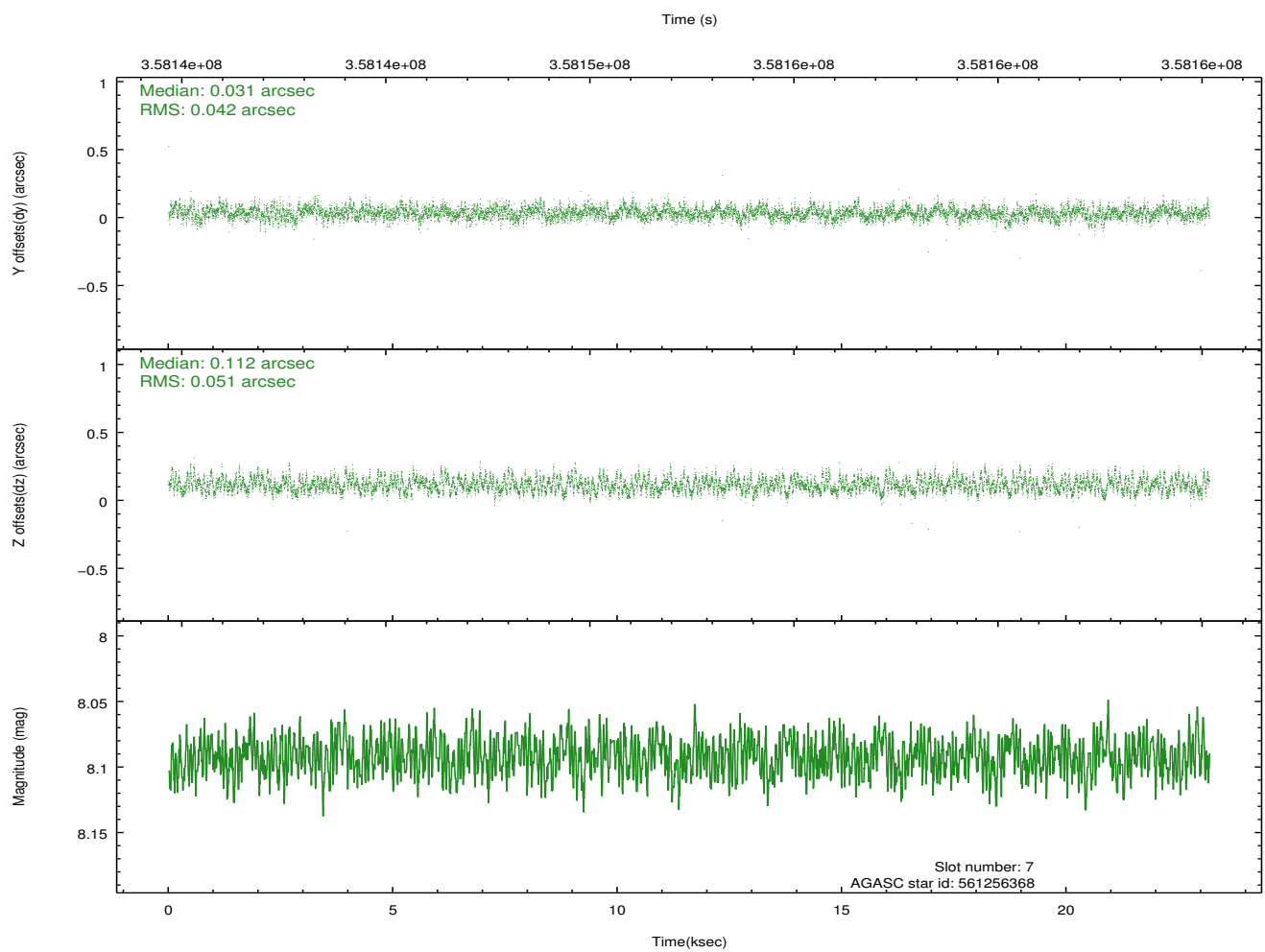
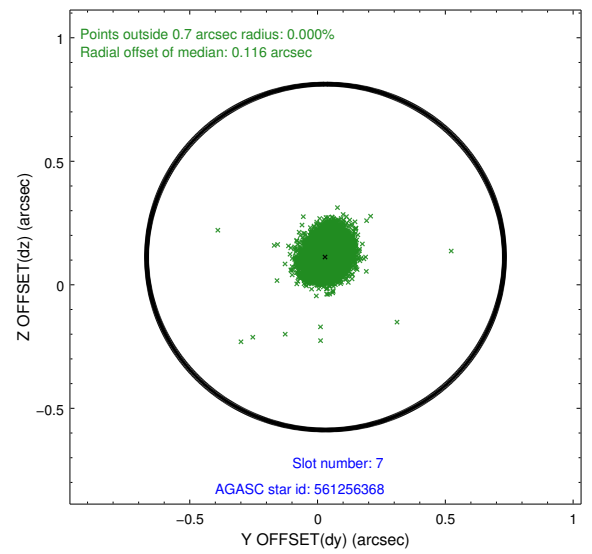
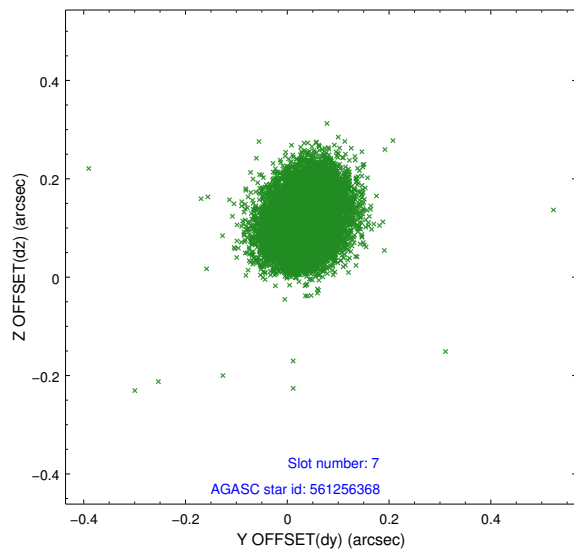
## 2.4.4 Slot 6



Time (s)

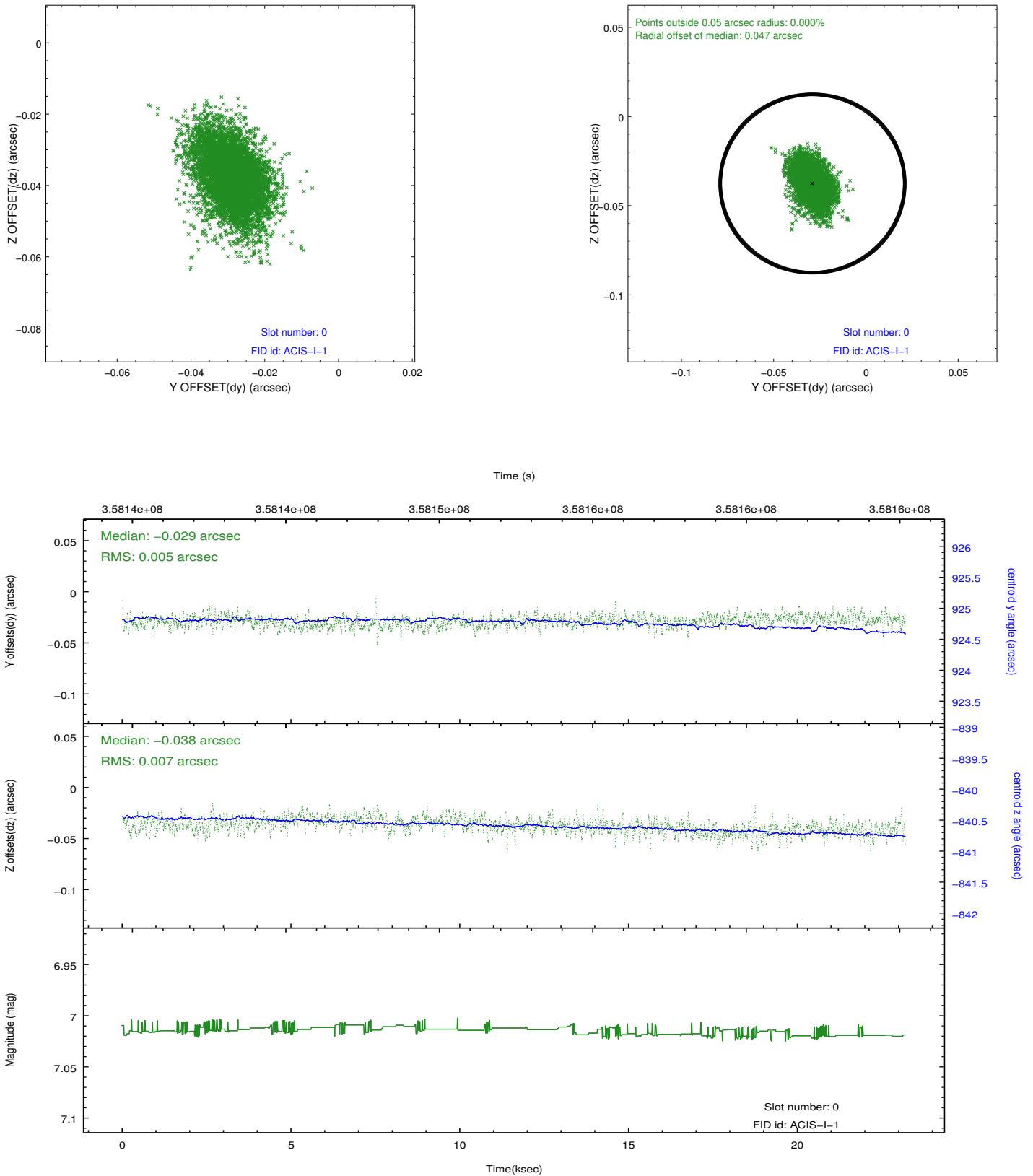


## 2.4.5 Slot 7

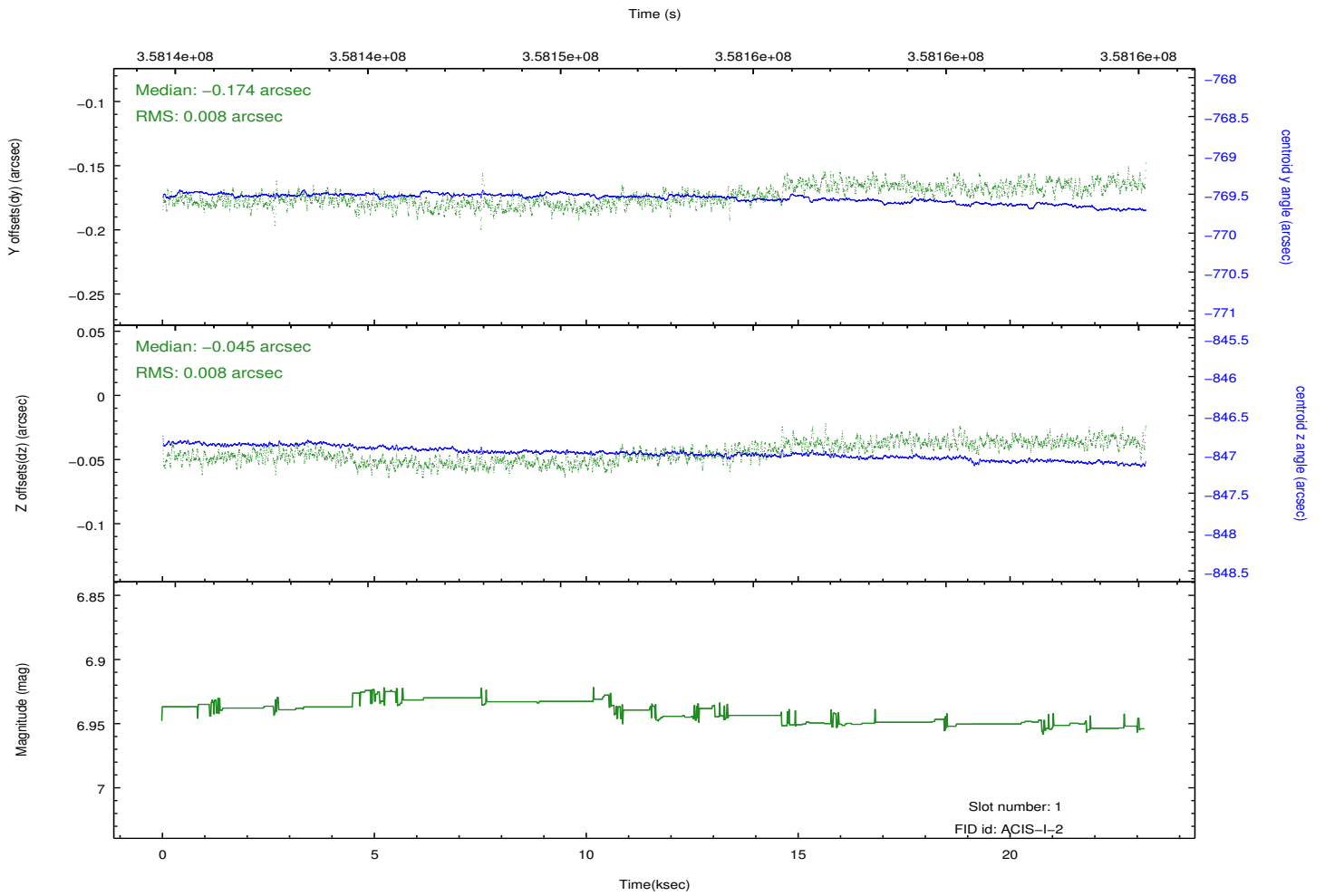
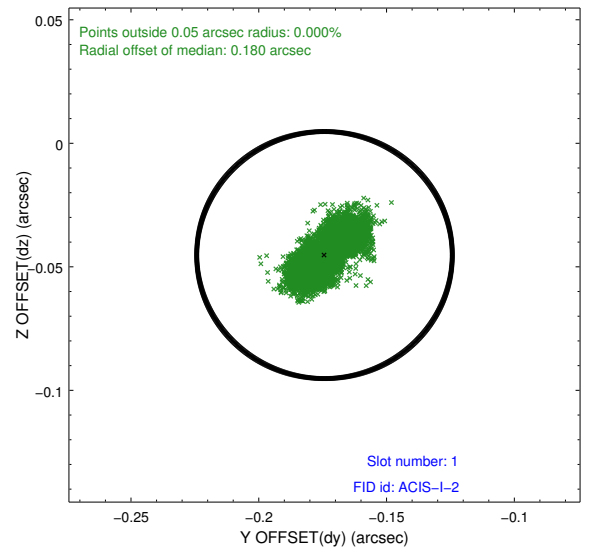
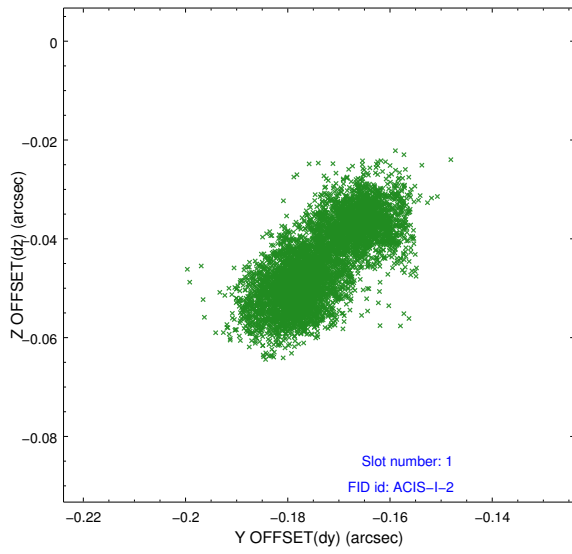


## 2.5 FID Slots

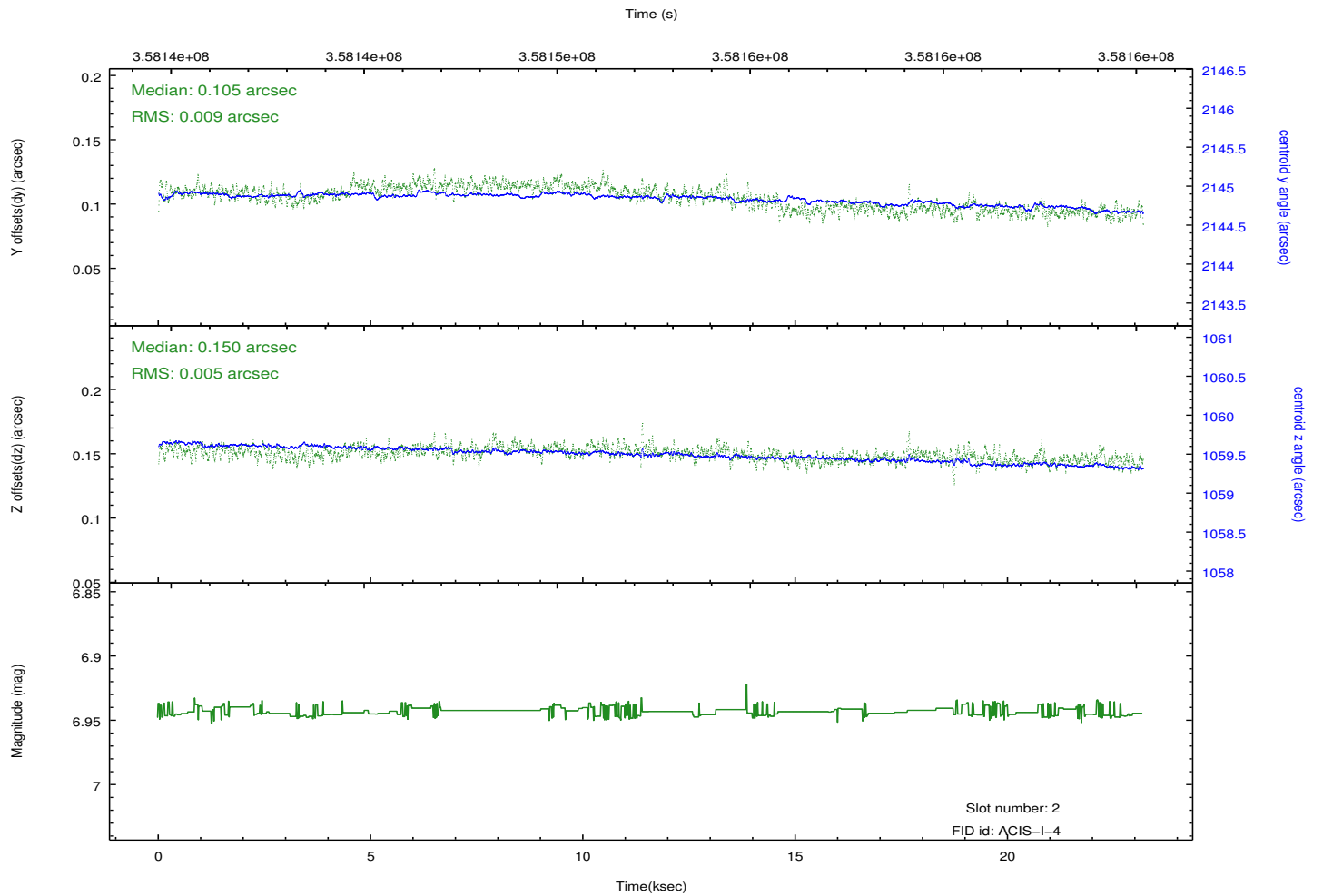
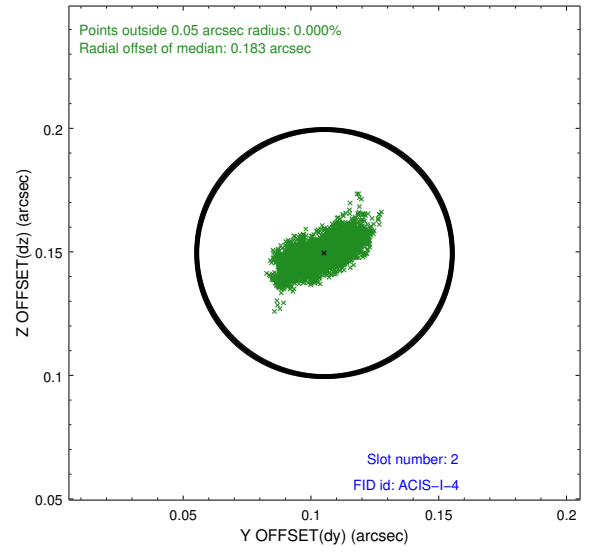
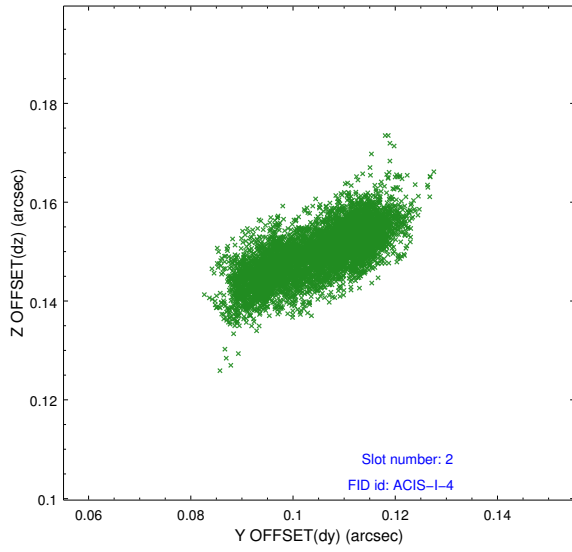
### 2.5.1 Slot 0



## 2.5.2 Slot 1



### 2.5.3 Slot 2



# A Summary

## A.1 Status

V&V Scientist	Beth Sundheim
V&V Date (YYYY-MM-DD)	2012.06.11
V&V Edition	1
V&V Disposition and Status	OK
V&V Charge Time	22.751959

## A.2 Comments