

V&V Reference Report

L2 ASCDS Version : 8.4.5

Observation 61839 - L2 Version 3
Chandra X-Ray Center

L2 Processing Date : Sep 3 2012

Contents

1	Front	2
2	OBI	3
2.1	OBI	3
2.1.1	Images	3
2.1.2	Bias	3
2.1.3	Parameters	4
2.1.4	Events	4
2.2	Compared Parameters	5
2.3	Star Slots	6
2.4	FID Slots	6
A	Summary	7
A.1	Status	7
A.2	Comments	7

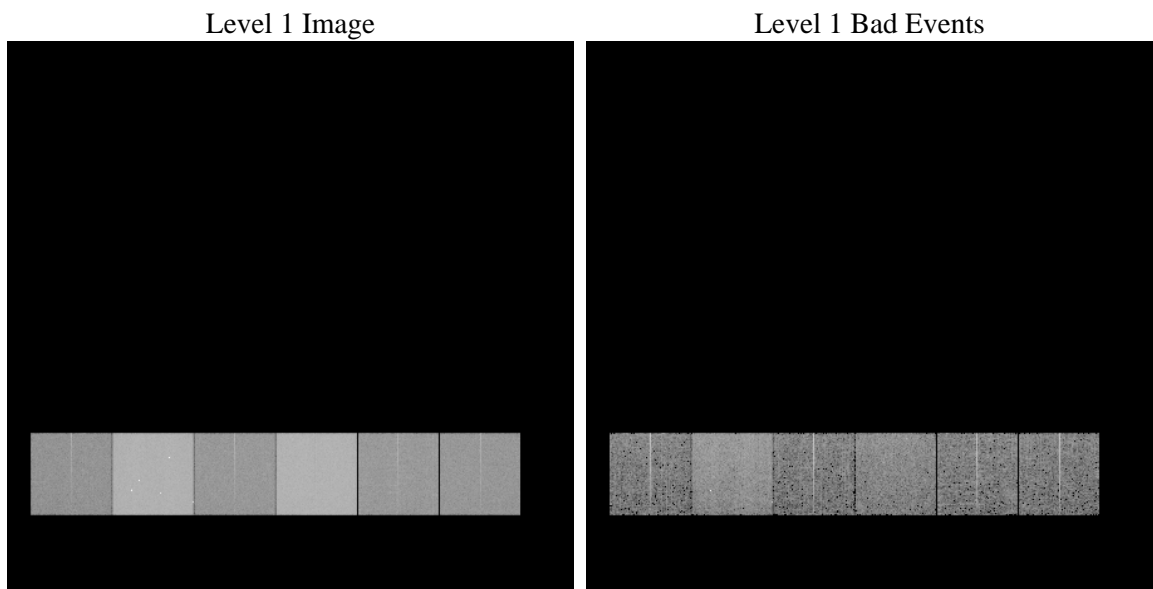
1 Front

seq_num	 	Sequence number
obs_id	61839	Observation id
title	ACIS-456789 diagnostics	Proposal title
observer	CHANDRA engineering request/realtime commanding	Principal investig
object	 	Source name
dtycle	0	
cycle	P	events from which exps? Prim/Second/Both
ra_targ	0.0	Observer's specified target RA [deg]
dec_targ	0.0	Observer's specified target Dec [deg]
ra_nom	208.55529973411	Nominal RA [deg]
dec_nom	69.405890273591	Nominal Dec [deg]
roll_nom	31.811157772278	Nominal Roll [deg]
revision	3	Processing version of data
ontime	5202.9769037217	Sum of GTIs [s]
livetime	5137.0936773102	Livetime [s]
ontime4	1710.7016273141	Sum of GTIs [s]
ontime5	5538.2512911409	Sum of GTIs [s]
ontime6	1982.9078668505	Sum of GTIs [s]
ontime7	5202.9769037217	Sum of GTIs [s]
ontime8	2018.6413867623	Sum of GTIs [s]
ontime9	1947.133336857	Sum of GTIs [s]
l2events	1306123	Number of level 2 events

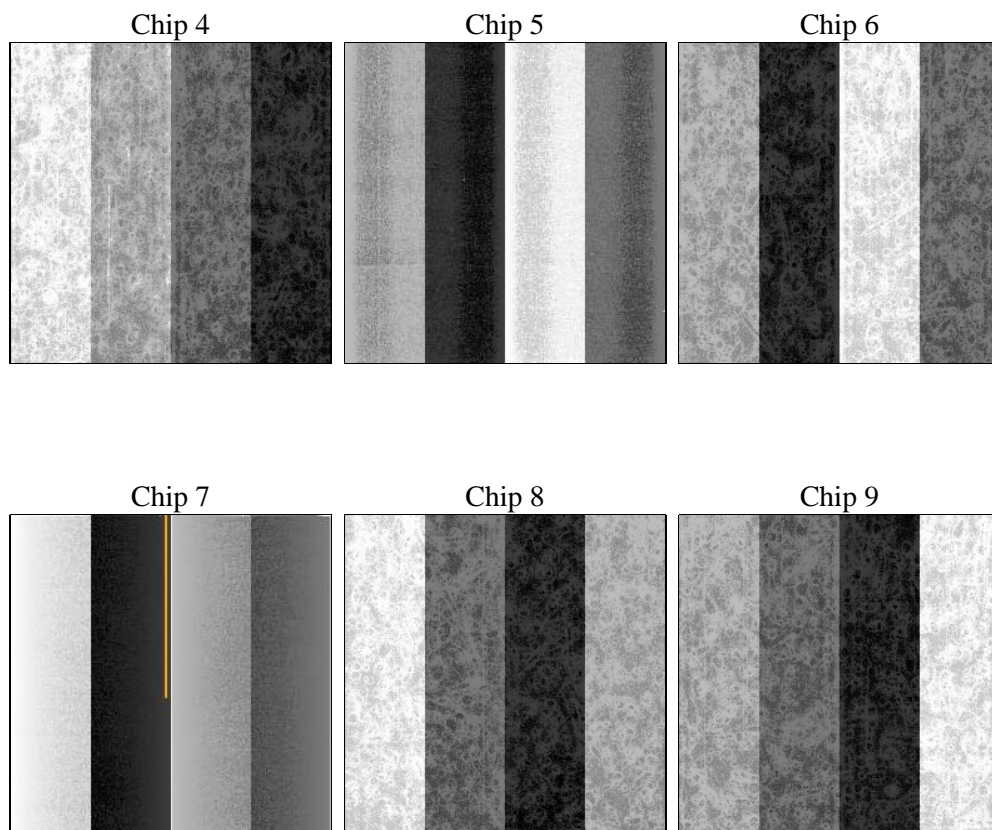
2 OBI

2.1 OBI

2.1.1 Images



2.1.2 Bias



2.1.3 Parameters

obi_num	1	Obi number	sched_exp_time	0.0	[s] Scheduled observation exposure time
ascdsver	8.4.5	Processing system revision	ontime	5202.9769037217	Sum of GTIs [s]
caldbver	4.5.1.1	 	ontime4	1710.7016273141	Sum of GTIs [s]
date	2012-09-03T22:46:10	Date and time of file creation	ontime5	5538.2512911409	Sum of GTIs [s]
revision	3	Processing version of data	ontime6	1982.9078668505	Sum of GTIs [s]
			ontime7	5202.9769037217	Sum of GTIs [s]
			ontime8	2018.6413867623	Sum of GTIs [s]
			ontime9	1947.133336857	Sum of GTIs [s]
			l1events	1545704	Number of level 1 events

2.1.4 Events

	ccd 4	ccd 5	ccd 6	ccd 7	ccd 8	ccd 9		ccd 4	ccd 5	ccd 6	ccd 7	ccd 8	ccd 9
level 1 events	146768	428894	177101	439505	184834	168602	grade 0 events	67851	90613	82841	102198	86007	78961
rejected events	25723	47890	24856	31188	26180	24090		46%	21%	46%	23%	46%	46%
rejected %	17%	11%	14%	7%	14%	14%	grade 1 events	587	412	627	328	644	611
								0%	0%	0%	0%	0%	0%
							grade 2 events	21603	138695	26132	89762	28080	25516
								14%	32%	14%	20%	15%	15%
							grade 3 events	7505	23832	9444	41481	10535	8914
								5%	5%	5%	9%	5%	5%
							grade 4 events	7440	23255	9461	40622	10302	8978
								5%	5%	5%	9%	5%	5%
							grade 5 events	1264	9443	1520	6706	1748	1478
								0%	2%	0%	1%	0%	0%
							grade 6 events	16646	104609	24367	134254	23730	22143
								11%	24%	13%	30%	12%	13%
							grade 7 events	23872	38035	22709	24154	23788	22001
								16%	8%	12%	5%	12%	13%

2.2 Compared Parameters

Parameter	Planned	Actual	Parameter	Planned	Actual
Instrument	ACIS	ACIS	Obspar format version number	7	7
Detector	ACIS-456789	ACIS-456789	Obspar file type	PREDICTED	ACTUAL
Grating	NONE	NONE	Obspar update status	NONE	UPDATED
Data mode	FAINT	FAINT	On-chip summing requested	N	N
Observation mode	SECONDARY	SECONDARY	Subarray requested	NONE	NONE
[deg] Pointing RA	0	208.5552997341139	Alternating exposures requested	N	N
[deg] Pointing Dec	0	69.40589027359104	[s] Primary exposure time	3.2	3.2
[deg] Pointing Roll	0.0	31.81115777227808			
[mm] SIM focus pos	-0.684267	-0.6828225247311905			
[mm] SIM defocus	0	0.8505141146731063			
[mm] SIM translation stage pos	-190.132523	250.466033080201			
[mm] SIM translation stage offset	0	-0.01005468664627074			
[s] Observation start time (MET)	91644664.04067101	91644663.272168			
Observation start date	2000-11-26T16:51:04	2000-11-26T16:51:03			
[s] Observation end time (MET)	91655174.391073	91655173.62256999			
Observation end date	2000-11-26T19:46:14	2000-11-26T19:46:13			
Read mode	TIMED	TIMED			

2.3 Star Slots

2.4 FID Slots

A Summary

A.1 Status

V&V Scientist	Beth Sundheim
V&V Date (YYYY-MM-DD)	2012.09.11
V&V Edition	1
V&V Disposition and Status	OK
V&V Charge Time	5.2029769037217

A.2 Comments