

V&V Reference Report

L2 ASCDS Version : 7.6.10

Observation 62006 - L2 Version 001
Chandra X-Ray Center

L2 Processing Date : May 27 2007

Contents

1	Front	2
2	OBI	3
2.1	OBI	3
2.1.1	Images	3
2.1.2	Bias	3
2.1.3	Parameters	4
2.1.4	Events	4
2.2	Compared Parameters	5
2.3	Star Slots	6
2.4	FID Slots	6
A	Summary	7
A.1	Status	7
A.2	Comments	7

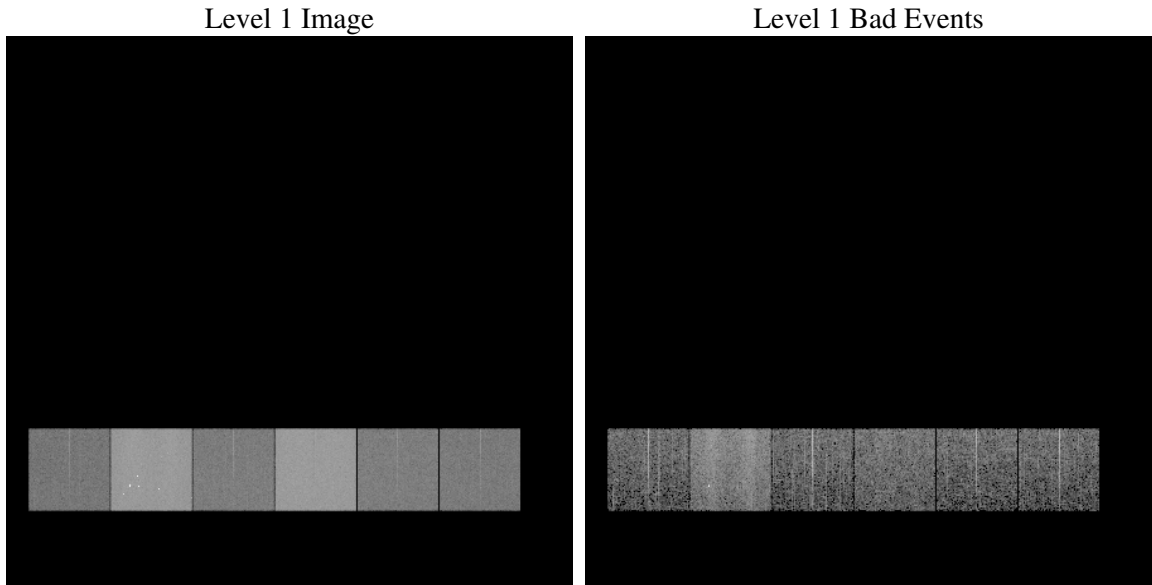
1 Front

seq_num	
obs_id	62006
title	ACIS-456789 diagnostics
observer	CHANDRA engineering request/realtime commanding
object	
dtcycle	0
cycle	P
ra_targ	0.0
dec_targ	0.0
ra_nom	149.98837233404
dec_nom	-50.027763713642
roll_nom	222.58345487709
revision	4
ontime	4443.3066063672
livetime	4387.0427826794
ontime4	1734.9624825418
ontime5	4705.825671941
ontime6	1922.901871711
ontime7	4443.3066063672
ontime8	1976.8940064907
ontime9	1874.1629125774
l2events	1259762

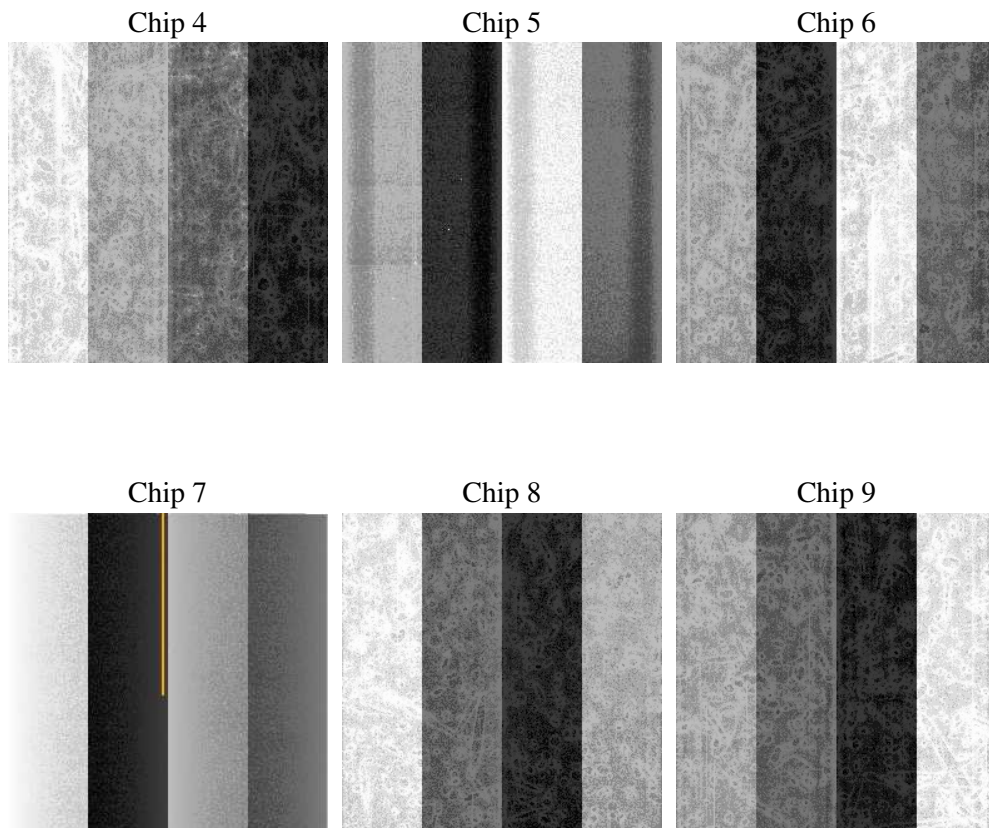
2 OBI

2.1 OBI

2.1.1 Images



2.1.2 Bias



2.1.3 Parameters

obi_num	0
ascdsver	7.6.10
caldbver	3.4.0
date	2007-05-27T23:54:52
revision	4

sched_exp_time	0.0
ontime	4443.3066063672
ontime4	1734.9624825418
ontime5	4705.825671941
ontime6	1922.901871711
ontime7	4443.3066063672
ontime8	1976.8940064907
ontime9	1874.1629125774
l1events	1432753

2.1.4 Events

	ccd 4	ccd 5	ccd 6	ccd 7	ccd 8	ccd 9
level 1 events	145703	383979	173784	389447	177827	162013
rejected events	21387	43616	22617	24852	21165	20640
rejected %	14%	11%	13%	6%	11%	12%

	ccd 4	ccd 5	ccd 6	ccd 7	ccd 8	ccd 9
grade 0 events	40107	81907	59776	91122	72140	58031
	27%	21%	34%	23%	40%	35%
grade 1 events	146	542	242	240	284	237
	0%	0%	0%	0%	0%	0%
grade 2 events	54947	114411	51766	77382	43743	46939
	37%	29%	29%	19%	24%	28%
grade 3 events	4198	24717	6218	38851	7674	6060
	2%	6%	3%	9%	4%	3%
grade 4 events	4026	22296	6465	37086	7637	6103
	2%	5%	3%	9%	4%	3%
grade 5 events	1432	7947	1672	5353	1558	1494
	0%	2%	0%	1%	0%	0%
grade 6 events	21292	97266	27194	120423	25726	24480
	14%	25%	15%	30%	14%	15%
grade 7 events	19555	34893	20451	18990	19065	18669
	13%	9%	11%	4%	10%	11%

2.2 Compared Parameters

Parameter	Planned	Actual	Parameter	Planned	Actual
Instrument	ACIS	ACIS	Obspar format version number	6	6
Detector	ACIS-456789	ACIS-456789	Obspar file type	PREDICTED	ACTUAL
Grating	NONE	NONE	Obspar update status	NONE	UPDATED
Data mode	FAINT	FAINT	On-chip summing requested	N	N
Observation mode	SECONDARY	SECONDARY	Subarray requested	NONE	NONE
Pointing RA	0	149.9883723340446	Alternating exposures requested	N	N
Pointing Dec	0	-50.02776371364244	Primary exposure time	0.000000	3.2
Pointing Roll	0.0	222.5834548770914			
SIM focus pos (mm)	-0.684267	-0.7809083437167272			
SIM defocus (mm)	0	0.7524282956875696			
SIM translation stage pos (mm)	-190.132523	250.466033080201			
SIM translation stage offset (mm)	0	-0.01005468664627074			
Observation start time	79035091.017	79035090.24853601			
Observation start date	2000-07-03T18:11:31	2000-07-03T18:11:30			
Observation end time	79081601.419	79081600.650251			
Observation end date	2000-07-04T07:06:41	2000-07-04T07:06:40			
Read mode	TIMED	TIMED			

2.3 Star Slots

2.4 FID Slots

A Summary

A.1 Status

V&V Scientist	Jen Lauer
V&V Date (YYYY-MM-DD)	2007.05.29
V&V Edition	1
V&V Disposition and Status	OK
V&V Charge Time	4.4433066

A.2 Comments

Focal plane temperature is warmer than -118.7 C degrees during the entire observation. This temperature is the upper limit of the verified ACIS calibration for the front-illuminated chips. The focal plane temperature is warmer than -116.7 degrees C for the entire observation. This temperature is the upper limit of the verified ACIS calibration for the back-illuminated chips. The ACIS spectral response calibration is less accurate at these warmer temperatures than it is at -119.7 C. Users whose science objectives depend on the most accurate spectral response (ie: fitting line-rich spectra) may notice an effect. Users whose science objectives do not depend on the most accurate spectral response should not notice an effect.