

V&V Reference Report

L2 ASCDS Version : 8.4.5

Observation 62097 - L2 Version 4
Chandra X-Ray Center

L2 Processing Date : Aug 25 2012

Contents

1	Front	2
2	OBI	3
2.1	OBI	3
2.1.1	Images	3
2.1.2	Bias	3
2.1.3	Parameters	4
2.1.4	Events	4
2.2	Compared Parameters	5
2.3	Star Slots	6
2.4	FID Slots	6
A	Summary	7
A.1	Status	7
A.2	Comments	7

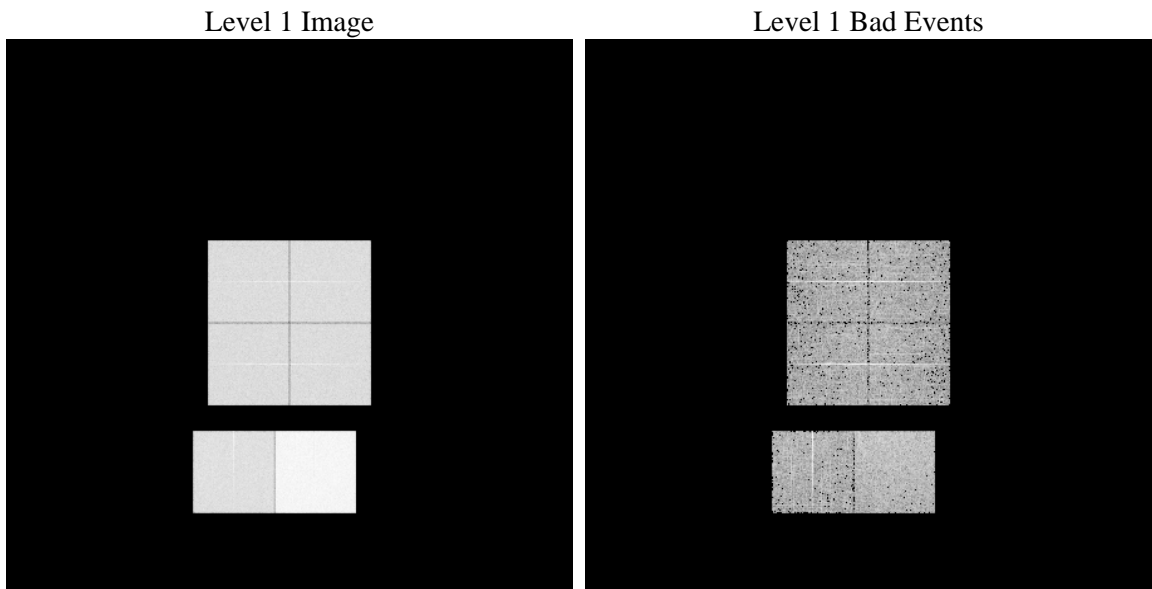
1 Front

seq_num	 	Sequence number
obs_id	62097	Observation id
title	ACIS-012367 diagnostics	Proposal title
observer	CHANDRA engineering request/realtime commanding	Principal investig
object	 	Source name
dtycle	0	
cycle	P	events from which exps? Prim/Second/Both
ra_targ	0.0	Observer's specified target RA [deg]
dec_targ	0.0	Observer's specified target Dec [deg]
ra_nom	95.013600673348	Nominal RA [deg]
dec_nom	-30.026281327254	Nominal Dec [deg]
roll_nom	261.87256989945	Nominal Roll [deg]
revision	4	Processing version of data
ontime	5427.3897339851	Sum of GTIs [s]
livetime	5358.6648571916	Livetime [s]
ontime0	2219.9468261749	Sum of GTIs [s]
ontime1	2254.4448069036	Sum of GTIs [s]
ontime2	2135.7617666274	Sum of GTIs [s]
ontime3	2161.5259365588	Sum of GTIs [s]
ontime6	2404.8090061992	Sum of GTIs [s]
ontime7	5427.3897339851	Sum of GTIs [s]
l2events	1395242	Number of level 2 events

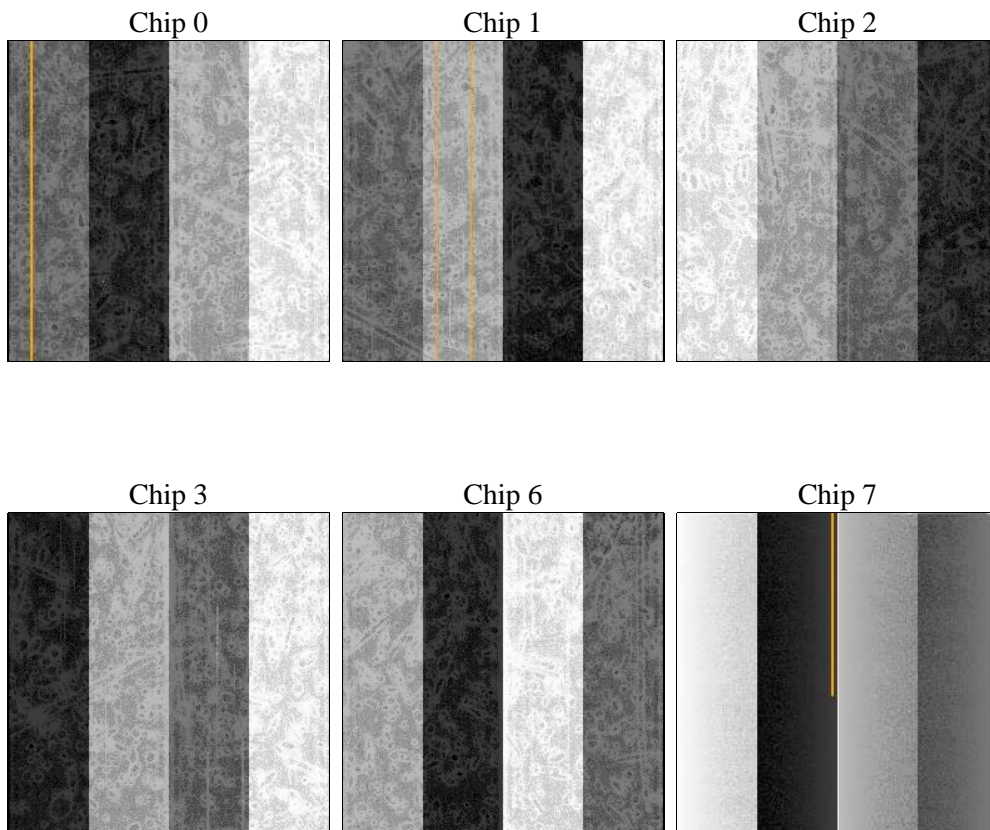
2 OBI

2.1 OBI

2.1.1 Images



2.1.2 Bias



2.1.3 Parameters

obi_num	0	Obi number	sched_exp_time	0.0	[s] Scheduled observation exposure time
ascdsver	8.4.5	Processing system revision	ontime	5427.3897339851	Sum of GTIs [s]
caldbver	4.5.1.1	 	ontime0	2219.9468261749	Sum of GTIs [s]
date	2012-08-25T12:07:17	Date and time of file creation	ontime1	2254.4448069036	Sum of GTIs [s]
revision	4	Processing version of data	ontime2	2135.7617666274	Sum of GTIs [s]
			ontime3	2161.5259365588	Sum of GTIs [s]
			ontime6	2404.8090061992	Sum of GTIs [s]
			ontime7	5427.3897339851	Sum of GTIs [s]
			l1events	1587840	Number of level 1 events

2.1.4 Events

	ccd 0	ccd 1	ccd 2	ccd 3	ccd 6	ccd 7		ccd 0	ccd 1	ccd 2	ccd 3	ccd 6	ccd 7
level 1 events	209567	213876	205432	207965	238533	512467	grade 0 events	104318	107217	103322	104577	117173	123861
rejected events	20138	20625	20650	21112	22529	30028		49%	50%	50%	50%	49%	24%
rejected %	9%	9%	10%	10%	9%	5%	grade 1 events	652	647	617	634	659	337
								0%	0%	0%	0%	0%	0%
							grade 2 events	33256	33417	31950	32453	37506	106905
								15%	15%	15%	15%	15%	20%
							grade 3 events	12235	12231	11607	11968	13424	49393
								5%	5%	5%	5%	5%	9%
							grade 4 events	12015	12226	11731	11747	13446	49115
								5%	5%	5%	5%	5%	9%
							grade 5 events	1561	1506	1441	1518	1746	6766
								0%	0%	0%	0%	0%	1%
							grade 6 events	27605	28160	26172	26108	34455	153165
								13%	13%	12%	12%	14%	29%
							grade 7 events	17925	18472	18592	18960	20124	22925
								8%	8%	9%	9%	8%	4%

2.2 Compared Parameters

Parameter	Planned	Actual	Parameter	Planned	Actual
Instrument	ACIS	ACIS	Obspar format version number	7	7
Detector	ACIS-012367	ACIS-012367	Obspar file type	PREDICTED	ACTUAL
Grating	NONE	NONE	Obspar update status	NONE	UPDATED
Data mode	FAINT	FAINT	On-chip summing requested	N	N
Observation mode	SECONDARY	SECONDARY	Subarray requested	NONE	NONE
[deg] Pointing RA	0	95.0136006733479	Alternating exposures requested	N	N
[deg] Pointing Dec	0	-30.02628132725414	[s] Primary exposure time	3.2	3.2
[deg] Pointing Roll	0.0	261.8725698994467			
[mm] SIM focus pos	-0.782348	-0.7809083437167272			
[mm] SIM defocus	0	0.7524282956875696			
[mm] SIM translation stage pos	-233.592463	250.466033080201			
[mm] SIM translation stage offset	0	-0.01005468664627074			
[s] Observation start time (MET)	71087691.72489101	71087690.956425			
Observation start date	2000-04-02T18:34:52	2000-04-02T18:34:50			
[s] Observation end time (MET)	71098216.425276	71098215.656811			
Observation end date	2000-04-02T21:30:16	2000-04-02T21:30:15			
Read mode	TIMED	TIMED			

2.3 Star Slots

2.4 FID Slots

A Summary

A.1 Status

V&V Scientist	Jen Lauer
V&V Date (YYYY-MM-DD)	2012.08.28
V&V Edition	1
V&V Disposition and Status	OK
V&V Charge Time	5.4273897339851

A.2 Comments