

V&V Reference Report

L2 ASCDS Version : 8.4.5

Observation 62111 - L2 Version 4
Chandra X-Ray Center

L2 Processing Date : Aug 24 2012

Contents

1	Front	2
2	OBI	3
2.1	OBI	3
2.1.1	Images	3
2.1.2	Bias	3
2.1.3	Parameters	4
2.1.4	Events	4
2.2	Compared Parameters	5
2.3	Star Slots	6
2.4	FID Slots	6
A	Summary	7
A.1	Status	7
A.2	Comments	7

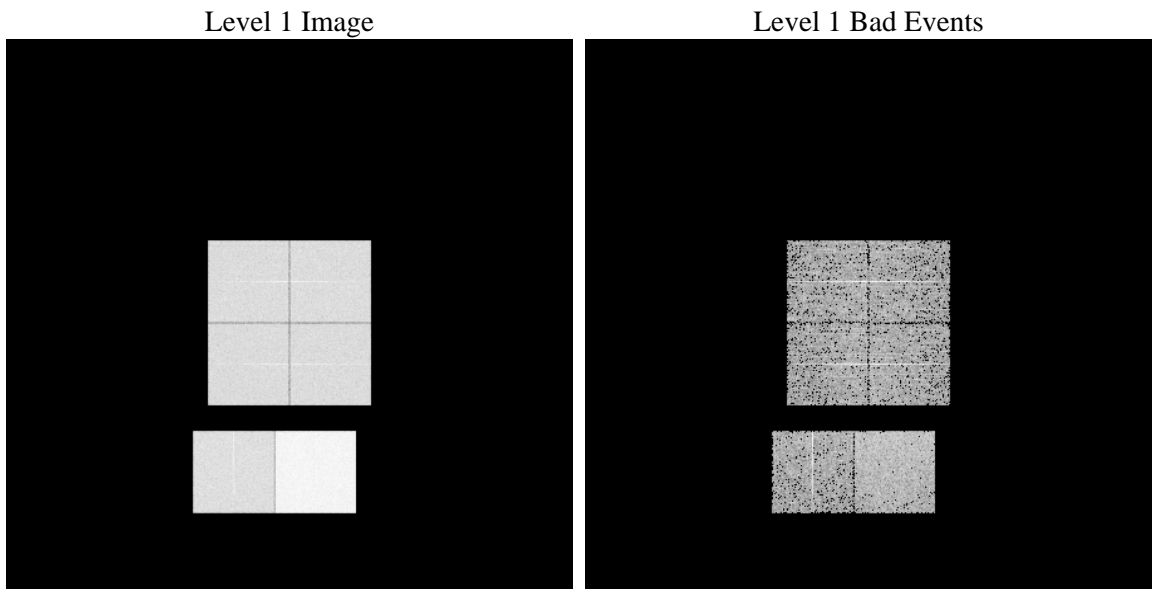
1 Front

seq_num	 	Sequence number
obs_id	62111	Observation id
title	ACIS-012367 diagnostics	Proposal title
observer	CHANDRA engineering request/realtime commanding	Principal investig
object	 	Source name
dtycycle	0	
cycle	P	events from which exps? Prim/Second/Both
ra_targ	0.0	Observer's specified target RA [deg]
dec_targ	0.0	Observer's specified target Dec [deg]
ra_nom	268.7400603521	Nominal RA [deg]
dec_nom	73.695419251604	Nominal Dec [deg]
roll_nom	93.548549681823	Nominal Roll [deg]
revision	4	Processing version of data
ontime	3545.6754068881	Sum of GTIs [s]
livetime	3500.7779299367	Livetime [s]
ontime0	1481.1539400816	Sum of GTIs [s]
ontime1	1503.8410605043	Sum of GTIs [s]
ontime2	1422.6856537461	Sum of GTIs [s]
ontime3	1422.8499134332	Sum of GTIs [s]
ontime6	1568.6618304104	Sum of GTIs [s]
ontime7	3545.6754068881	Sum of GTIs [s]
l2events	925087	Number of level 2 events

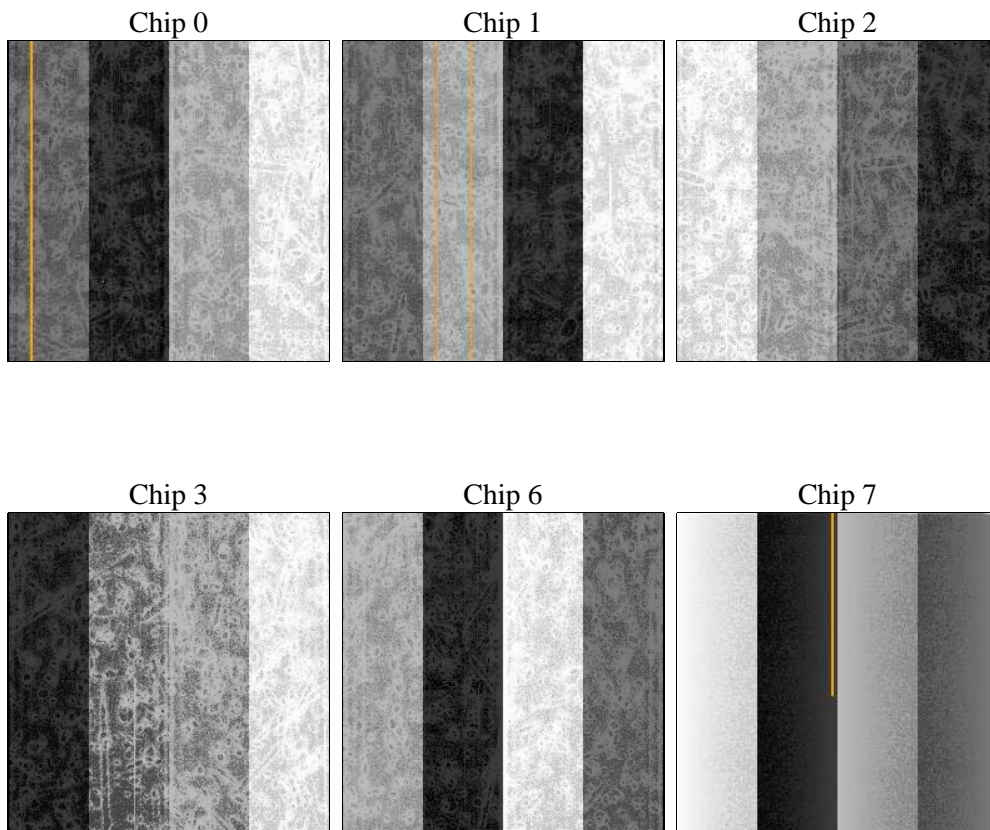
2 OBI

2.1 OBI

2.1.1 Images



2.1.2 Bias



2.1.3 Parameters

obi_num	0	Obi number	sched_exp_time	0.0	[s] Scheduled observation exposure time
ascdsver	8.4.5	Processing system revision	ontime	3545.6754068881	Sum of GTIs [s]
caldsver	4.5.1.1	 	ontime0	1481.1539400816	Sum of GTIs [s]
date	2012-08-24T16:45:14	Date and time of file creation	ontime1	1503.8410605043	Sum of GTIs [s]
revision	4	Processing version of data	ontime2	1422.6856537461	Sum of GTIs [s]
			ontime3	1422.8499134332	Sum of GTIs [s]
			ontime6	1568.6618304104	Sum of GTIs [s]
			ontime7	3545.6754068881	Sum of GTIs [s]
			l1events	1060434	Number of level 1 events

2.1.4 Events

	ccd 0	ccd 1	ccd 2	ccd 3	ccd 6	ccd 7		ccd 0	ccd 1	ccd 2	ccd 3	ccd 6	ccd 7
level 1 events	141895	143999	138551	139263	156573	340153	grade 0 events	70553	71816	69589	70299	77286	82575
rejected events	15021	14574	14696	15307	15192	22406		49%	49%	50%	50%	49%	24%
rejected %	10%	10%	10%	10%	9%	6%	grade 1 events	439	449	421	464	459	209
								0%	0%	0%	0%	0%	0%
							grade 2 events	22518	22732	21426	21691	24766	71188
								15%	15%	15%	15%	15%	20%
							grade 3 events	7940	8321	7783	7939	8708	33016
								5%	5%	5%	5%	5%	9%
							grade 4 events	8202	8341	7987	7890	8656	32887
								5%	5%	5%	5%	5%	9%
							grade 5 events	1020	1047	956	1078	1180	4577
								0%	0%	0%	0%	0%	1%
							grade 6 events	18499	19019	17601	17022	22524	100458
								13%	13%	12%	12%	14%	29%
							grade 7 events	12724	12274	12788	12880	12994	15243
								8%	8%	9%	9%	8%	4%

2.2 Compared Parameters

Parameter	Planned	Actual	Parameter	Planned	Actual
Instrument	ACIS	ACIS	Obspar format version number	7	7
Detector	ACIS-012367	ACIS-012367	Obspar file type	PREDICTED	ACTUAL
Grating	NONE	NONE	Obspar update status	NONE	UPDATED
Data mode	FAINT	FAINT	On-chip summing requested	N	N
Observation mode	SECONDARY	SECONDARY	Subarray requested	NONE	NONE
[deg] Pointing RA	0	268.7400603520977	Alternating exposures requested	N	N
[deg] Pointing Dec	0	73.69541925160421	[s] Primary exposure time	3.2	3.2
[deg] Pointing Roll	0.0	93.54854968182256			
[mm] SIM focus pos	-0.782348	-0.6828225247311905			
[mm] SIM defocus	0	0.8505141146731063			
[mm] SIM translation stage pos	-233.592463	250.466033080201			
[mm] SIM translation stage offset	0	-0.01005468664627074			
[s] Observation start time (MET)	70120819.43952399	70120818.671059			
Observation start date	2000-03-22T14:00:19	2000-03-22T14:00:18			
[s] Observation end time (MET)	70128814.439816	70128813.671351			
Observation end date	2000-03-22T16:13:34	2000-03-22T16:13:33			
Read mode	TIMED	TIMED			

2.3 Star Slots

2.4 FID Slots

A Summary

A.1 Status

V&V Scientist	Jen Lauer
V&V Date (YYYY-MM-DD)	2012.08.27
V&V Edition	1
V&V Disposition and Status	OK
V&V Charge Time	3.5456754068881

A.2 Comments