

V&V Reference Report

L2 ASCDS Version : 8.4.5

Observation 60575 - L2 Version 3
Chandra X-Ray Center

L2 Processing Date : Nov 2 2012

Contents

1	Front	2
2	OBI	3
2.1	OBI	3
2.1.1	Images	3
2.1.2	Bias	3
2.1.3	Parameters	4
2.1.4	Events	4
2.2	Compared Parameters	5
2.3	Star Slots	6
2.4	FID Slots	6
A	Summary	7
A.1	Status	7
A.2	Comments	7

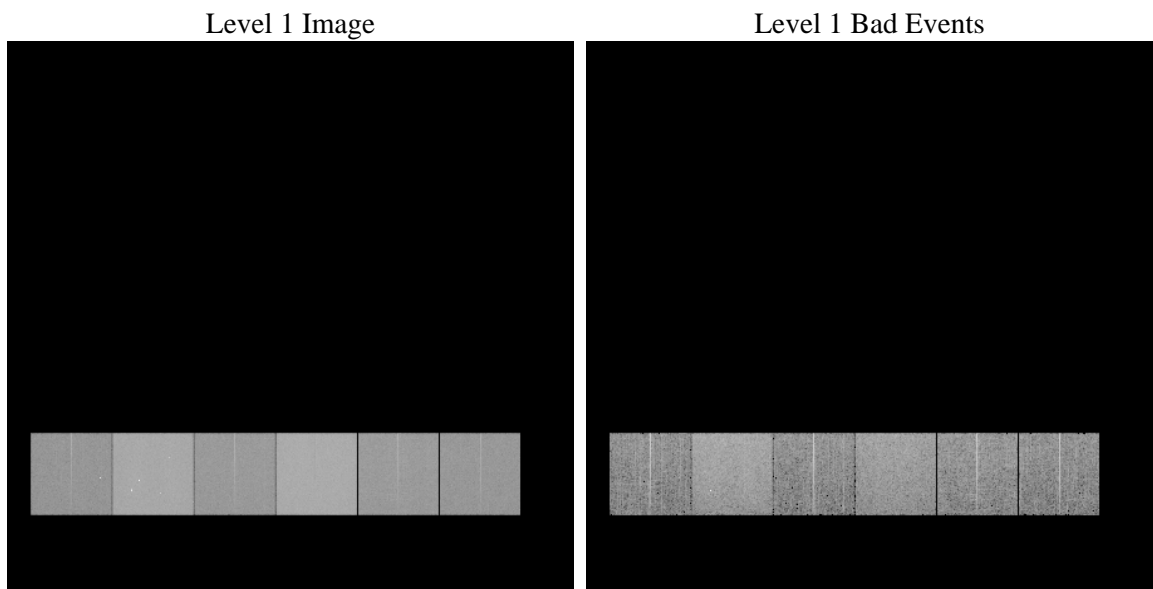
1 Front

seq_num	 	Sequence number
obs_id	60575	Observation id
title	ACIS-456789 diagnostics	Proposal title
observer	CHANDRA engineering request/realtime commanding	Principal investig
object	 	Source name
dtycle	0	
cycle	P	events from which exps? Prim/Second/Both
ra_targ	0.0	Observer's specified target RA [deg]
dec_targ	0.0	Observer's specified target Dec [deg]
ra_nom	26.996207592993	Nominal RA [deg]
dec_nom	-55.971464519621	Nominal Dec [deg]
roll_nom	61.365298027825	Nominal Roll [deg]
revision	3	Processing version of data
ontime	11327.306464523	Sum of GTIs [s]
livetime	11183.873289584	Livetime [s]
ontime4	5489.9072682559	Sum of GTIs [s]
ontime5	11327.306464523	Sum of GTIs [s]
ontime6	6041.2753162086	Sum of GTIs [s]
ontime7	11327.306464523	Sum of GTIs [s]
ontime8	6147.7897967398	Sum of GTIs [s]
ontime9	5791.7182358205	Sum of GTIs [s]
l2events	1663001	Number of level 2 events

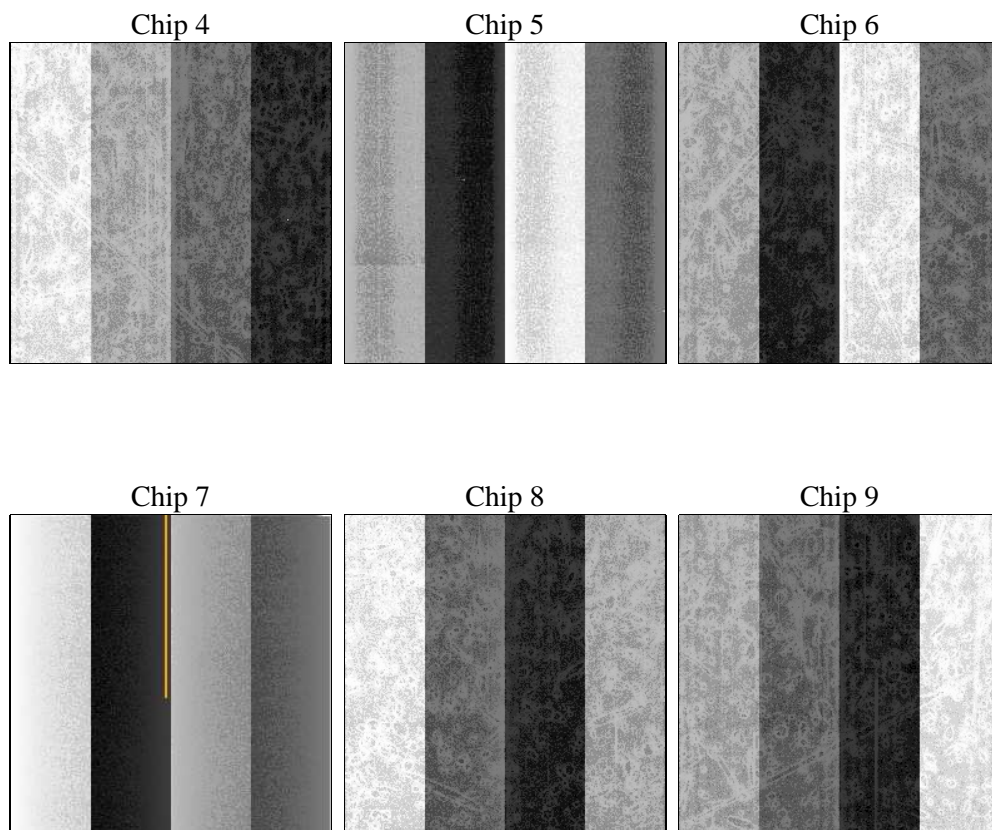
2 OBI

2.1 OBI

2.1.1 Images



2.1.2 Bias



2.1.3 Parameters

obi_num	0	Obi number	sched_exp_time	0.0	[s] Scheduled observation exposure time
ascdsver	8.4.5	Processing system revision	ontime	11327.306464523	Sum of GTIs [s]
caldbver	4.5.2	 	ontime4	5489.9072682559	Sum of GTIs [s]
date	2012-11-02T20:07:55	Date and time of file creation	ontime5	11327.306464523	Sum of GTIs [s]
revision	3	Processing version of data	ontime6	6041.2753162086	Sum of GTIs [s]
			ontime7	11327.306464523	Sum of GTIs [s]
			ontime8	6147.7897967398	Sum of GTIs [s]
			ontime9	5791.7182358205	Sum of GTIs [s]
			l1events	2050650	Number of level 1 events

2.1.4 Events

	ccd 4	ccd 5	ccd 6	ccd 7	ccd 8	ccd 9		ccd 4	ccd 5	ccd 6	ccd 7	ccd 8	ccd 9
level 1 events	242701	469494	278353	510009	291872	258221	grade 0 events	117316	92303	129219	113523	134061	119709
rejected events	41132	72909	40925	59322	46796	39920		48%	19%	46%	22%	45%	46%
rejected %	16%	15%	14%	11%	16%	15%	grade 1 events	827	288	626	286	649	629
								0%	0%	0%	0%	0%	0%
							grade 2 events	31755	142649	41047	99637	42812	37722
								13%	30%	14%	19%	14%	14%
							grade 3 events	13475	24271	14690	45893	15727	14029
								5%	5%	5%	8%	5%	5%
							grade 4 events	13321	23938	14779	45055	15889	13916
								5%	5%	5%	8%	5%	5%
							grade 5 events	2560	12551	2884	11211	3471	2885
								1%	2%	1%	2%	1%	1%
							grade 6 events	25702	113424	37693	146579	36587	32925
								10%	24%	13%	28%	12%	12%
							grade 7 events	37745	60070	37415	47825	42676	36406
								15%	12%	13%	9%	14%	14%

2.2 Compared Parameters

Parameter	Planned	Actual	Parameter	Planned	Actual
Instrument	ACIS	ACIS	Obspar format version number	7	7
Detector	ACIS-456789	ACIS-456789	Obspar file type	PREDICTED	ACTUAL
Grating	NONE	NONE	Obspar update status	NONE	UPDATED
Data mode	FAINT	FAINT	On-chip summing requested	N	N
Observation mode	SECONDARY	SECONDARY	Subarray requested	NONE	NONE
[deg] Pointing RA	0	26.99620759299273	Alternating exposures requested	N	N
[deg] Pointing Dec	0	-55.97146451962067	[s] Primary exposure time	0.000000	3.2
[deg] Pointing Roll	0.0	61.36529802782492			
[mm] SIM focus pos	-0.684267	-1.038866356238299			
[mm] SIM defocus	0	0.4944702831659975			
[mm] SIM translation stage pos	-190.132523	250.4635187648994			
[mm] SIM translation stage offset	0	-0.007540371344731511			
[s] Observation start time (MET)	178415538.51541	178415537.49068			
Observation start date	2003-08-27T23:52:19	2003-08-27T23:52:17			
[s] Observation end time (MET)	178456386.817159	178456385.79243			
Observation end date	2003-08-28T11:13:07	2003-08-28T11:13:05			
Read mode	TIMED	TIMED			

2.3 Star Slots

2.4 FID Slots

A Summary

A.1 Status

V&V Scientist	Jen Lauer
V&V Date (YYYY-MM-DD)	2012.12.06
V&V Edition	1
V&V Disposition and Status	OK
V&V Charge Time	11.327306464523

A.2 Comments