

# V&V Reference Report

## L2 ASCDS Version : 7.6.8

Observation 60801 - L2 Version 001  
Chandra X-Ray Center

L2 Processing Date : Jul 26 2006

## Contents

<b>1</b>	<b>Front</b>	<b>2</b>
<b>2</b>	<b>OBI</b>	<b>3</b>
2.1	OBI . . . . .	3
2.1.1	Images . . . . .	3
2.1.2	Bias . . . . .	3
2.1.3	Parameters . . . . .	4
2.1.4	Events . . . . .	4
2.2	Compared Parameters . . . . .	5
2.3	Aspect . . . . .	6
2.4	Star Slots . . . . .	8
2.5	FID Slots . . . . .	8
<b>A</b>	<b>Summary</b>	<b>9</b>
A.1	Status . . . . .	9
A.2	Comments . . . . .	9

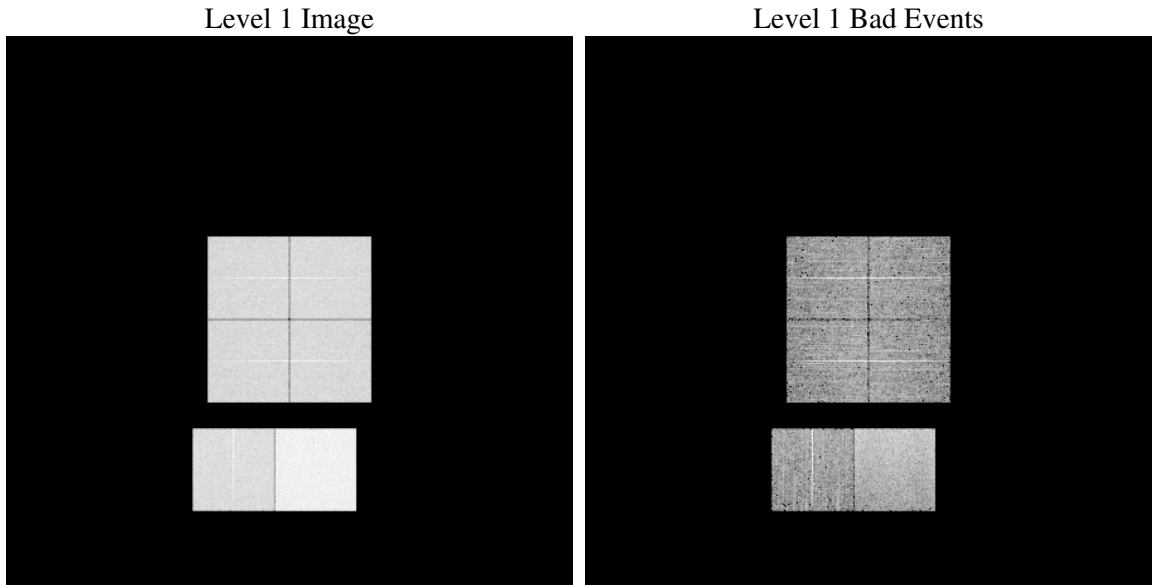
# 1 Front

seq_num	&#160
obs_id	60801
title	ACIS-012367 diagnostics
observer	CHANDRA engineering request/realtime commanding
object	&#160
dtcycle	0
cycle	P
ra_targ	0.0
dec_targ	0.0
ra_nom	98.014859800084
dec_nom	-0.42447335961446
roll_nom	268.30660293206
revision	2
ontime	8451.1999685168
livetime	8344.1857858138
ontime0	4661.3826867342
ontime1	4820.2323750257
ontime2	4528.5846965909
ontime3	4570.5525628924
ontime6	4982.3633154333
ontime7	8451.1999685168
l2events	1264079

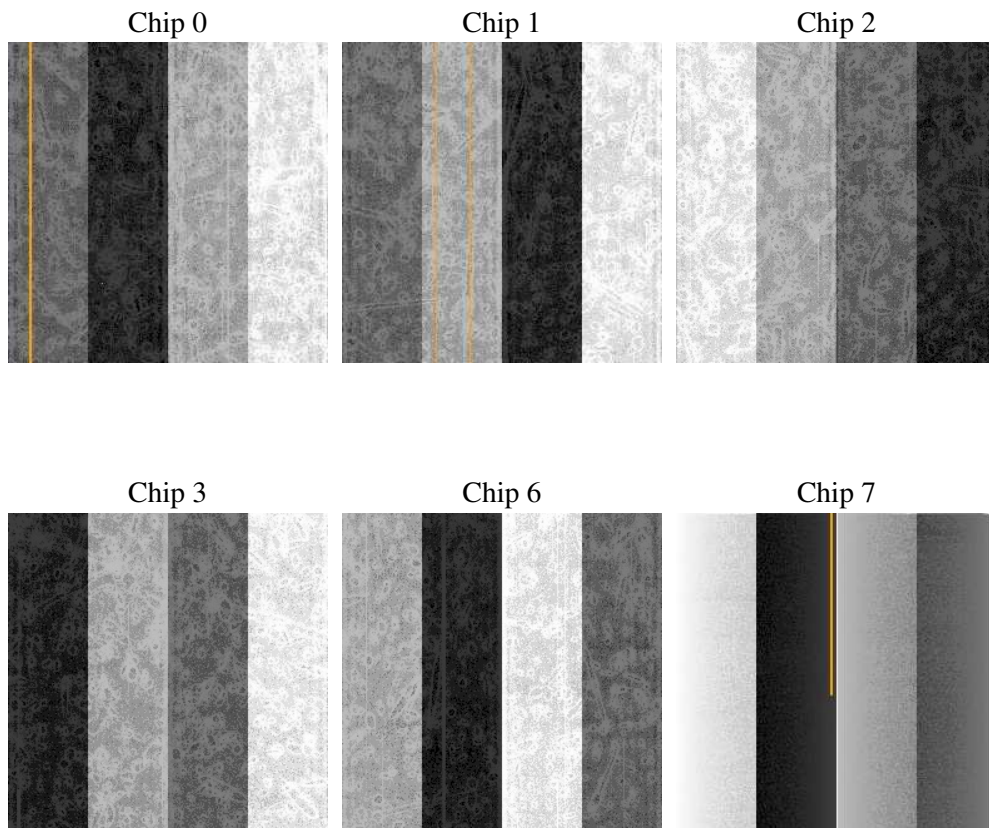
## 2 OBI

### 2.1 OBI

#### 2.1.1 Images



#### 2.1.2 Bias



### 2.1.3 Parameters

obi_num	0
ascdsver	7.6.8
caldbver	3.2.2
date	2006-07-26T06:12:10
revision	2

sched_exp_time	0.0
ontime	8465.4956966341
ontime0	4670.3186732829
ontime1	4829.1273514926
ontime2	4530.9565729797
ontime3	4579.5706593692
ontime6	4991.1761820018
ontime7	8465.4956966341
l1events	1542887

### 2.1.4 Events

	ccd 0	ccd 1	ccd 2	ccd 3	ccd 6	ccd 7
level 1 events	220361	226810	218168	220431	247672	409445
rejected events	31465	31089	32528	32186	34923	58207
rejected %	14%	13%	14%	14%	14%	14%

	ccd 0	ccd 1	ccd 2	ccd 3	ccd 6	ccd 7
grade 0 events	104013	107823	104158	106006	116372	64476
	47%	47%	47%	48%	46%	15%
grade 1 events	581	550	588	615	573	139
	0%	0%	0%	0%	0%	0%
grade 2 events	33096	34630	31543	32155	36691	105256
	15%	15%	14%	14%	14%	25%
grade 3 events	12296	12390	11996	12359	13264	26485
	5%	5%	5%	5%	5%	6%
grade 4 events	12269	12575	12157	12274	13026	26042
	5%	5%	5%	5%	5%	6%
grade 5 events	2234	2167	2067	2257	2480	7607
	1%	0%	0%	1%	1%	1%
grade 6 events	27606	28723	25929	25853	33801	129621
	12%	12%	11%	11%	13%	31%
grade 7 events	28266	27952	29730	28912	31465	49819
	12%	12%	13%	13%	12%	12%

## 2.2 Compared Parameters

Parameter	Planned	Actual	Parameter	Planned	Actual
Instrument	ACIS	ACIS	Obspar format version number	6	6
Detector	ACIS-012367	ACIS-012367	Obspar file type	PREDICTED	ACTUAL
Grating	NONE	NONE	Obspar update status	NONE	UPDATED
Data mode	FAINT	FAINT	On-chip summing requested	N	N
Observation mode	SECONDARY	SECONDARY	Subarray requested	NONE	NONE
Pointing RA	0	98.01485980008448	Alternating exposures requested	N	N
Pointing Dec	0	-0.4244733596144626	Primary exposure time	0.000000	3.2
Pointing Roll	0.0	268.3066029320561			
SIM focus pos (mm)	-0.782348	-0.6828225247311905			
SIM defocus (mm)	0	0.8505141146731063			
SIM translation stage pos (mm)	-233.592463	250.466033080201			
SIM translation stage offset (mm)	0	-0.01005468664627074			
Observation start time	164990975.595304	164990974.5706			
Observation start date	2003-03-25T14:49:36	2003-03-25T14:49:34			
Observation end time	165002597.045793	165002596.02109			
Observation end date	2003-03-25T18:03:17	2003-03-25T18:03:16			
Read mode	TIMED	TIMED			

## 2.3 Aspect



**2.4 Star Slots**

**2.5 FID Slots**

# A Summary

## A.1 Status

V&V Scientist	Jen Lauer
V&V Date (YYYY-MM-DD)	2006.07.26
V&V Edition	1
V&V Disposition and Status	OK
V&V Charge Time	8.45119996

## A.2 Comments