

V&V Reference Report

L2 ASCDS Version : 7.6.7.2

Observation 60289 - L2 Version 001
Chandra X-Ray Center

L2 Processing Date : May 25 2006

Contents

1	Front	2
2	OBI	3
2.1	OBI	3
2.1.1	Images	3
2.1.2	Bias	3
2.1.3	Parameters	4
2.1.4	Events	4
2.2	Compared Parameters	5
2.3	Aspect	6
2.4	Star Slots	8
2.5	FID Slots	8
A	Summary	9
A.1	Status	9
A.2	Comments	9

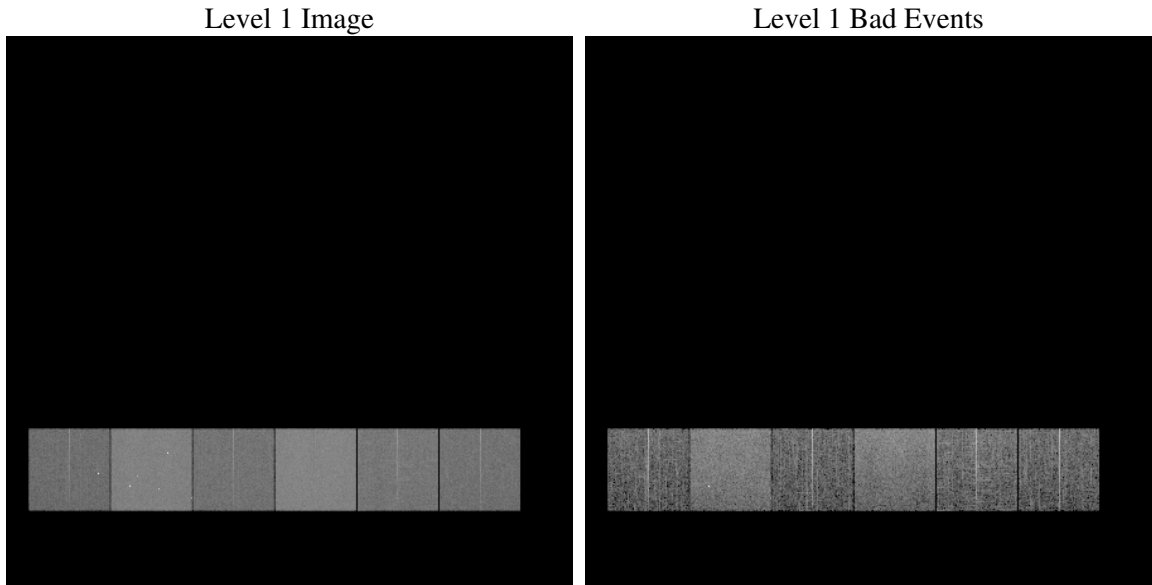
1 Front

seq_num	
obs_id	60289
title	ACIS-456789 diagnostics
observer	CHANDRA engineering request/realtime commanding
object	
dtcycle	0
cycle	P
ra_targ	0.0
dec_targ	0.0
ra_nom	193.02983714078
dec_nom	-20.993436655461
roll_nom	340.30582867248
revision	2
ontime	7800.6353145242
livetime	7701.858973193
ontime4	4439.8696639836
ontime5	7800.6763545275
ontime6	4880.602453053
ontime7	7800.6353145242
ontime8	5110.7936908305
ontime9	4770.2853779197
l2events	1084959

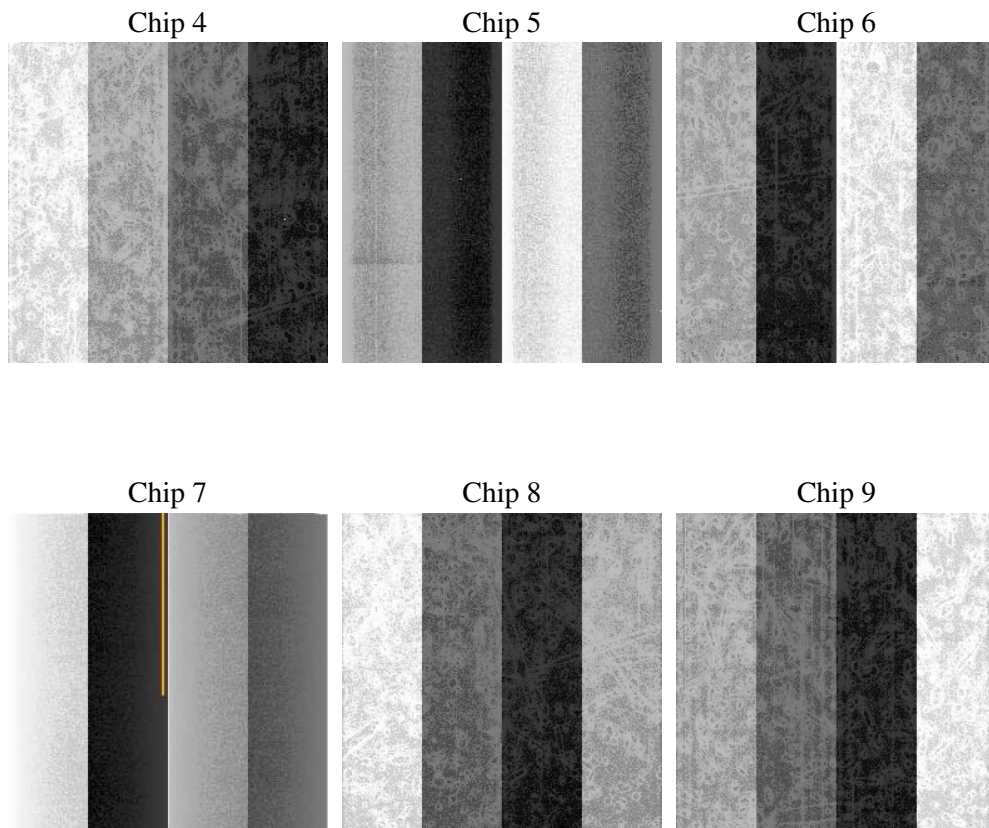
2 OBI

2.1 OBI

2.1.1 Images



2.1.2 Bias



2.1.3 Parameters

obi_num	0
ascdsver	7.6.7.2
caldbver	3.2.2
date	2006-05-25T17:29:32
revision	2

sched_exp_time	0.0
ontime	7801.0923929513
ontime4	4440.2036224008
ontime5	7801.0923929513
ontime6	4880.9774514735
ontime7	7801.0923929513
ontime8	5111.0866092741
ontime9	4770.78349635
l1events	1416082

2.1.4 Events

	ccd 4	ccd 5	ccd 6	ccd 7	ccd 8	ccd 9
level 1 events	176740	300940	202515	321104	220824	193959
rejected events	35361	60897	36347	56239	42503	36549
rejected %	20%	20%	17%	17%	19%	18%

	ccd 4	ccd 5	ccd 6	ccd 7	ccd 8	ccd 9
grade 0 events	82162	30163	90189	46863	96965	86538
	46%	10%	44%	14%	43%	44%
grade 1 events	595	332	459	117	491	519
	0%	0%	0%	0%	0%	0%
grade 2 events	22609	111843	28609	80055	31185	26873
	12%	37%	14%	24%	14%	13%
grade 3 events	9336	8018	10138	19096	11480	10014
	5%	2%	5%	5%	5%	5%
grade 4 events	9137	7789	10339	18848	11554	9991
	5%	2%	5%	5%	5%	5%
grade 5 events	2162	6414	2353	6878	3004	2621
	1%	2%	1%	2%	1%	1%
grade 6 events	18135	82230	26893	100003	27137	23994
	10%	27%	13%	31%	12%	12%
grade 7 events	32604	54151	33535	49244	39008	33409
	18%	17%	16%	15%	17%	17%

2.2 Compared Parameters

Parameter	Planned	Actual	Parameter	Planned	Actual
Instrument	ACIS	ACIS	Obspar format version number	6	6
Detector	ACIS-456789	ACIS-456789	Obspar file type	PREDICTED	ACTUAL
Grating	NONE	NONE	Obspar update status	NONE	UPDATED
Data mode	FAINT	FAINT	On-chip summing requested	N	N
Observation mode	SECONDARY	SECONDARY	Subarray requested	NONE	NONE
Pointing RA	0	193.029837140777	Alternating exposures requested	N	N
Pointing Dec	0	-20.99343665546071	Primary exposure time	0.000000	3.2
Pointing Roll	0.0	340.3058286724842			
SIM focus pos (mm)	-0.684267	-0.6828225247311905			
SIM defocus (mm)	0	0.8505141146731063			
SIM translation stage pos (mm)	-190.132523	250.466033080201			
SIM translation stage offset (mm)	0	-0.01005468664627074			
Observation start time	197842563.209139	197842562.18417			
Observation start date	2004-04-08T20:16:03	2004-04-08T20:16:02			
Observation end time	197856378.159746	197856377.13478			
Observation end date	2004-04-09T00:06:18	2004-04-09T00:06:17			
Read mode	TIMED	TIMED			

2.3 Aspect

2.4 Star Slots

2.5 FID Slots

A Summary

A.1 Status

V&V Scientist	Beth Sundheim
V&V Date (YYYY-MM-DD)	2006.05.25
V&V Edition	1
V&V Disposition and Status	OK
V&V Charge Time	7.80063531

A.2 Comments