

V&V Reference Report

L2 ASCDS Version : 7.6.7.2

Observation 60416 - L2 Version 001
Chandra X-Ray Center

L2 Processing Date : Jun 8 2006

Contents

1	Front	2
2	OBI	3
2.1	OBI	3
2.1.1	Images	3
2.1.2	Bias	3
2.1.3	Parameters	4
2.1.4	Events	4
2.2	Compared Parameters	5
2.3	Aspect	6
2.4	Star Slots	8
2.5	FID Slots	8
A	Summary	9
A.1	Status	9
A.2	Comments	9

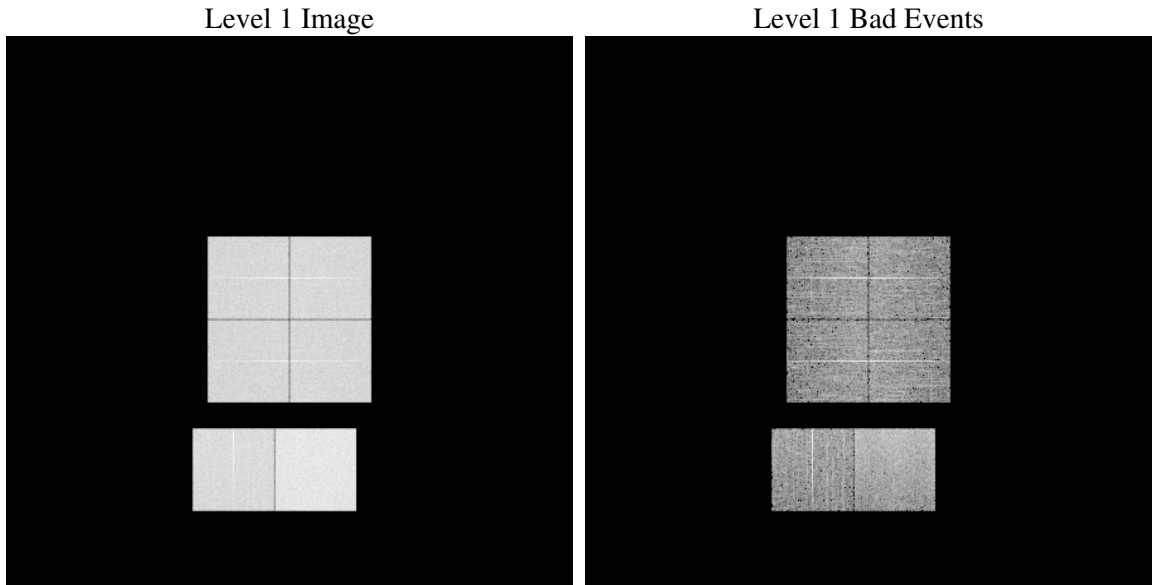
1 Front

seq_num	
obs_id	60416
title	ACIS-012367 diagnostics
observer	CHANDRA engineering request/realtime commanding
object	
dtcycle	0
cycle	P
ra_targ	0.0
dec_targ	0.0
ra_nom	124.00058913357
dec_nom	13.028579142101
roll_nom	55.985396526919
revision	2
ontime	8467.1999684572
livetime	8359.9831841209
ontime0	5974.8894186318
ontime1	6065.6376835406
ontime2	5777.3583738804
ontime3	5819.3224267364
ontime6	6240.8592719138
ontime7	8467.1999684572
l2events	1248280

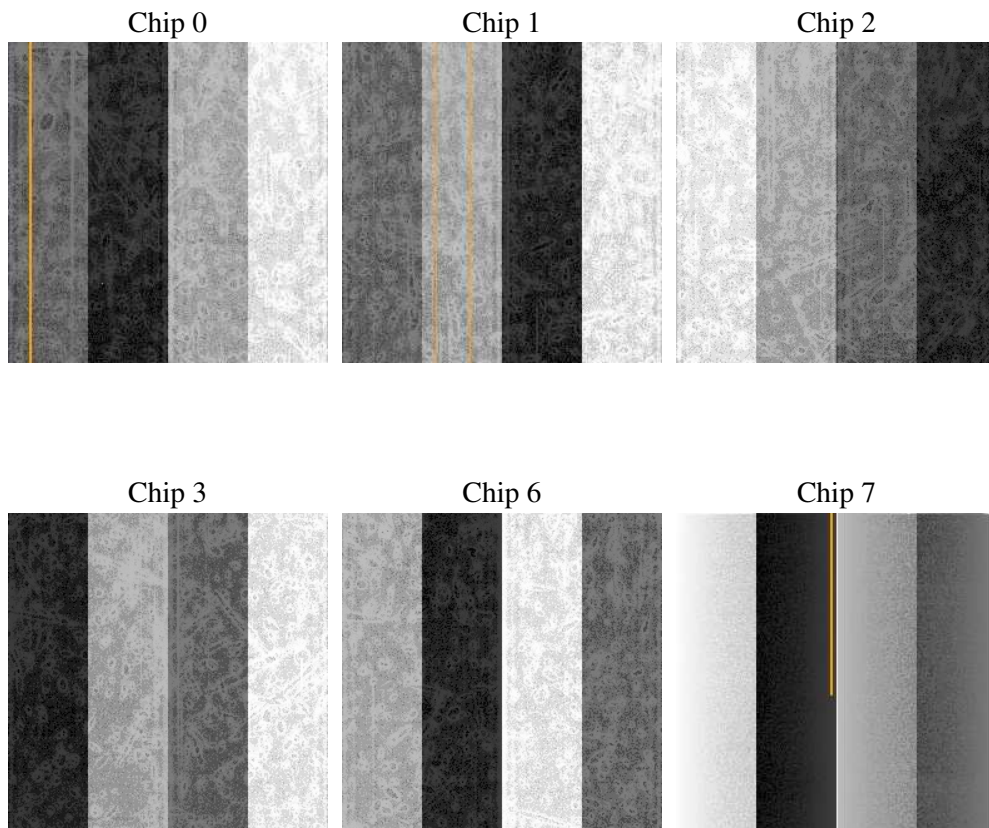
2 OBI

2.1 OBI

2.1.1 Images



2.1.2 Bias



2.1.3 Parameters

obi_num	0
ascdsver	7.6.7.2
caldbver	3.2.2
date	2006-06-08T14:20:40
revision	2

sched_exp_time	0.0
ontime	8468.7482385635
ontime0	5976.4376887381
ontime1	6067.1859536469
ontime2	5778.737973541
ontime3	5820.8706968427
ontime6	6242.1978316009
ontime7	8468.7482385635
l1events	1536996

2.1.4 Events

	ccd 0	ccd 1	ccd 2	ccd 3	ccd 6	ccd 7
level 1 events	235119	239141	229233	233354	257953	342196
rejected events	34872	34603	33766	35130	37575	52655
rejected %	14%	14%	14%	15%	14%	15%

	ccd 0	ccd 1	ccd 2	ccd 3	ccd 6	ccd 7
grade 0 events	110504	111999	109677	111385	120013	51179
	46%	46%	47%	47%	46%	14%
grade 1 events	596	507	582	589	529	115
	0%	0%	0%	0%	0%	0%
grade 2 events	35000	36290	33039	33809	37853	88444
	14%	15%	14%	14%	14%	25%
grade 3 events	12849	12980	12905	12991	13710	20825
	5%	5%	5%	5%	5%	6%
grade 4 events	12884	13036	12735	12828	13747	20544
	5%	5%	5%	5%	5%	6%
grade 5 events	2486	2495	2210	2383	2711	6794
	1%	1%	0%	1%	1%	1%
grade 6 events	29010	30233	27111	27211	35055	108549
	12%	12%	11%	11%	13%	31%
grade 7 events	31790	31601	30974	32158	34335	45746
	13%	13%	13%	13%	13%	13%

2.2 Compared Parameters

Parameter	Planned	Actual	Parameter	Planned	Actual
Instrument	ACIS	ACIS	Obspar format version number	6	6
Detector	ACIS-012367	ACIS-012367	Obspar file type	PREDICTED	ACTUAL
Grating	NONE	NONE	Obspar update status	NONE	UPDATED
Data mode	FAINT	FAINT	On-chip summing requested	N	N
Observation mode	SECONDARY	SECONDARY	Subarray requested	NONE	NONE
Pointing RA	0	124.000589133565	Alternating exposures requested	N	N
Pointing Dec	0	13.02857914210144	Primary exposure time	0.000000	3.2
Pointing Roll	0.0	55.985396526919			
SIM focus pos (mm)	-0.782348	-0.6828225247311905			
SIM defocus (mm)	0	0.8505141146731063			
SIM translation stage pos (mm)	-233.592463	250.466033080201			
SIM translation stage offset (mm)	0	-0.01005468664627074			
Observation start time	189884177.910475	189884176.88576			
Observation start date	2004-01-07T17:36:18	2004-01-07T17:36:16			
Observation end time	189906707.411455	189906706.38675			
Observation end date	2004-01-07T23:51:47	2004-01-07T23:51:46			
Read mode	TIMED	TIMED			

2.3 Aspect

2.4 Star Slots

2.5 FID Slots

A Summary

A.1 Status

V&V Scientist	Jen Lauer
V&V Date (YYYY-MM-DD)	2006.06.08
V&V Edition	1
V&V Disposition and Status	OK
V&V Charge Time	8.46719996

A.2 Comments