

# V&V Reference Report

## L2 ASCDS Version : 7.6.7.1

Observation 59607 - L2 Version 002  
Chandra X-Ray Center

L2 Processing Date : Mar 10 2006

## Contents

<b>1</b>	<b>Front</b>	<b>2</b>
<b>2</b>	<b>OBI</b>	<b>3</b>
2.1	OBI . . . . .	3
2.1.1	Images . . . . .	3
2.1.2	Bias . . . . .	3
2.1.3	Parameters . . . . .	4
2.1.4	Events . . . . .	4
2.2	Compared Parameters . . . . .	5
2.3	Aspect . . . . .	6
2.4	Star Slots . . . . .	8
2.5	FID Slots . . . . .	8
<b>A</b>	<b>Summary</b>	<b>9</b>
A.1	Status . . . . .	9
A.2	Comments . . . . .	9

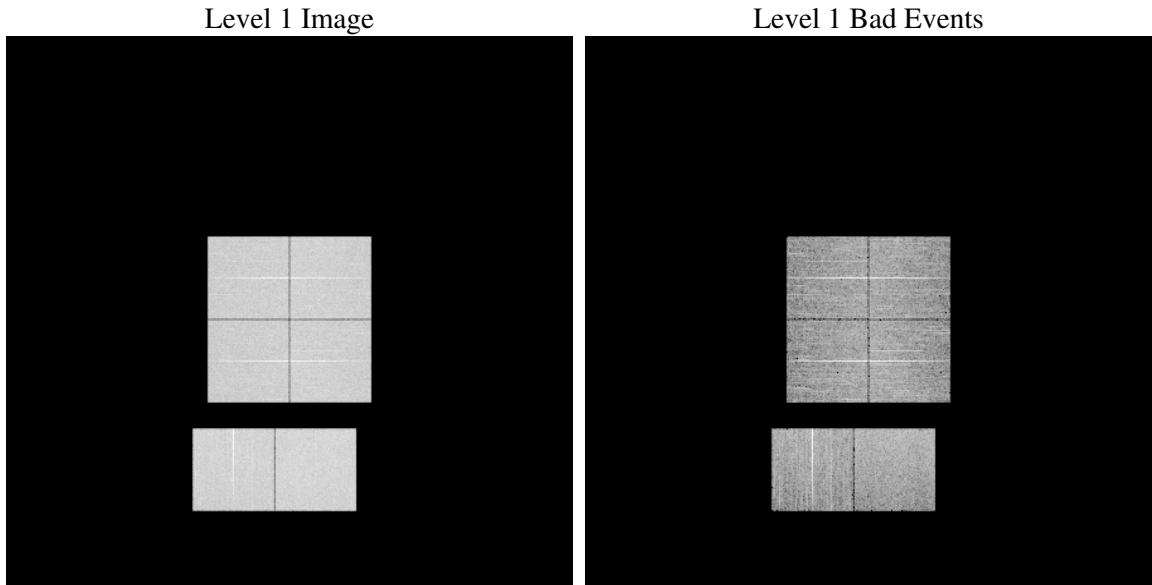
# 1 Front

seq_num	&#160
obs_id	59607
title	ACIS-012367 diagnostics
observer	CHANDRA engineering request/realtime commanding
object	&#160
dtcycle	0
cycle	P
ra_targ	0.0
dec_targ	0.0
ra_nom	286.01056835536
dec_nom	-44.970558292741
roll_nom	39.98384105131
revision	2
ontime	8278.3419480622
livetime	8173.5165976967
ontime0	7782.5136126876
ontime1	7941.33822909
ontime2	7545.9392716587
ontime3	7737.0578887761
ontime6	8148.760897249
ontime7	8278.3419480622
l2events	1078672

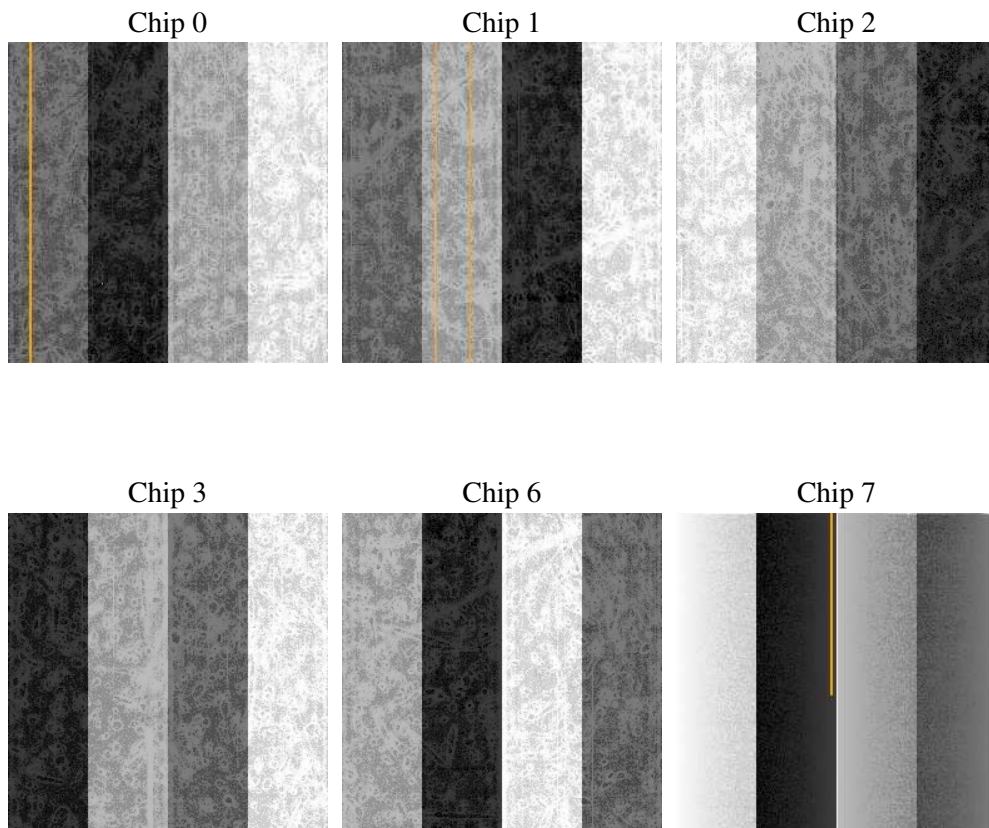
## 2 OBI

### 2.1 OBI

#### 2.1.1 Images



#### 2.1.2 Bias



### 2.1.3 Parameters

obi_num	0
ascdsver	7.6.7.1
caldbver	3.2.1
date	2006-03-10T21:04:36
revision	2

sched_exp_time	0.0
ontime	8280.7734379768
ontime0	7784.9040625989
ontime1	7943.7116979063
ontime2	7548.3127404749
ontime3	7739.530418694
ontime6	8151.1343660653
ontime7	8280.7734379768
l1events	1487540

### 2.1.4 Events

	ccd 0	ccd 1	ccd 2	ccd 3	ccd 6	ccd 7
level 1 events	235467	242337	233219	243323	261805	271389
rejected events	54055	55960	56031	60222	62887	63309
rejected %	22%	23%	24%	24%	24%	23%

	ccd 0	ccd 1	ccd 2	ccd 3	ccd 6	ccd 7
grade 0 events	99958	101357	99232	102892	107551	32684
	42%	41%	42%	42%	41%	12%
grade 1 events	568	499	628	636	570	100
	0%	0%	0%	0%	0%	0%
grade 2 events	31733	33614	29547	30946	34596	64719
	13%	13%	12%	12%	13%	23%
grade 3 events	11800	12052	11623	11912	12252	13831
	5%	4%	4%	4%	4%	5%
grade 4 events	11637	11938	11741	11923	12364	13757
	4%	4%	5%	4%	4%	5%
grade 5 events	3374	3543	3214	3691	3837	7020
	1%	1%	1%	1%	1%	2%
grade 6 events	26353	27501	25125	25517	32237	83175
	11%	11%	10%	10%	12%	30%
grade 7 events	50044	51833	52109	55806	58398	56103
	21%	21%	22%	22%	22%	20%

## 2.2 Compared Parameters

Parameter	Planned	Actual	Parameter	Planned	Actual
Instrument	ACIS	ACIS	Obspar format version number	6	6
Detector	ACIS-012367	ACIS-012367	Obspar file type	PREDICTED	ACTUAL
Grating	NONE	NONE	Obspar update status	NONE	UPDATED
Data mode	FAINT	FAINT	On-chip summing requested	N	N
Observation mode	SECONDARY	SECONDARY	Subarray requested	NONE	NONE
Pointing RA	0	286.0105683553554	Alternating exposures requested	N	N
Pointing Dec	0	-44.97055829274066	Primary exposure time	3.2	3.2
Pointing Roll	0.0	39.9838410513099			
SIM focus pos (mm)	-0.782348	-0.6828225247311905			
SIM defocus (mm)	0	0.8505141146731063			
SIM translation stage pos (mm)	-233.592463	250.466033080201			
SIM translation stage offset (mm)	0	-0.01005468664627074			
Observation start time	235573218.751727	235573217.72673			
Observation start date	2005-06-19T13:00:19	2005-06-19T13:00:17			
Observation end time	235597296.002825	235597294.97783			
Observation end date	2005-06-19T19:41:36	2005-06-19T19:41:34			
Read mode	TIMED	TIMED			

## 2.3 Aspect



**2.4 Star Slots**

**2.5 FID Slots**

# A Summary

## A.1 Status

V&V Scientist	Jen Lauer
V&V Date (YYYY-MM-DD)	2006.03.13
V&V Edition	1
V&V Disposition and Status	OK
V&V Charge Time	8.27834194

## A.2 Comments

The ACIS focal plane temperature was above the calibration limit for the first 2 ksec of the observation.