

V&V Reference Report

L2 ASCDS Version : 8.4.4

Observation 58345 - L2 Version 2
Chandra X-Ray Center

L2 Processing Date : Apr 27 2012

Contents

1	Front	2
2	OBI	3
2.1	OBI	3
2.1.1	Images	3
2.1.2	Bias	3
2.1.3	Parameters	4
2.1.4	Events	4
2.2	Compared Parameters	5
2.3	Star Slots	6
2.4	FID Slots	6
A	Summary	7
A.1	Status	7
A.2	Comments	7

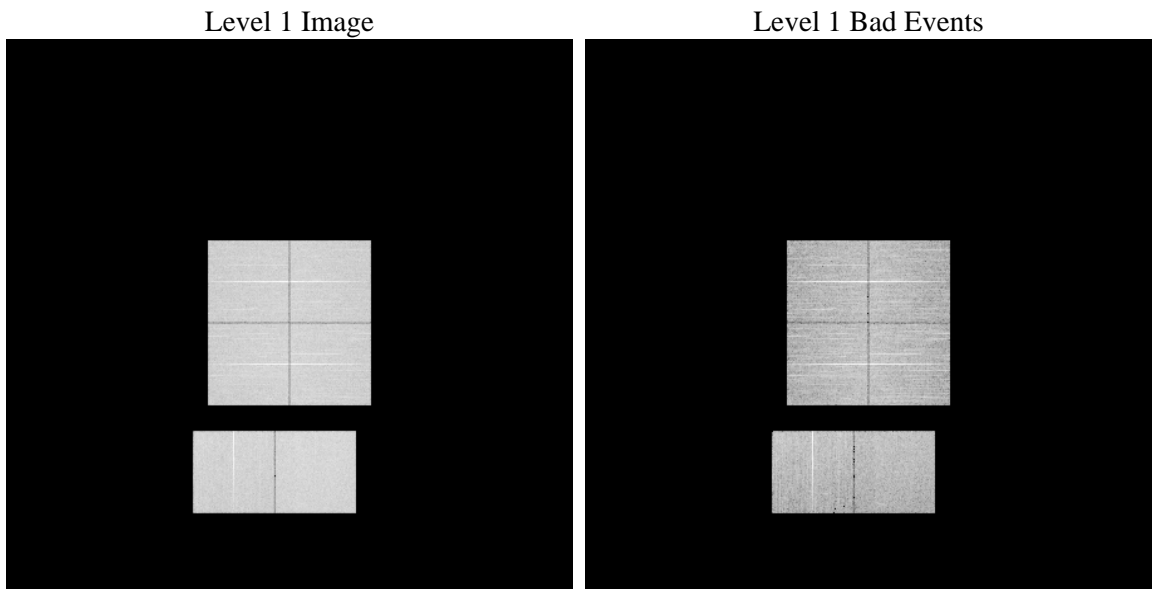
1 Front

seq_num	 	Sequence number
obs_id	58345	Observation id
title	ACIS-012367 diagnostics	Proposal title
observer	CHANDRA engineering request/realtime commanding	Principal investig
object	 	Source name
dtycle	0	
cycle	P	events from which exps? Prim/Second/Both
ra_targ	0.0	Observer's specified target RA [deg]
dec_targ	0.0	Observer's specified target Dec [deg]
ra_nom	244.63372718325	Nominal RA [deg]
dec_nom	-39.113485645679	Nominal Dec [deg]
roll_nom	294.84212114707	Nominal Roll [deg]
revision	2	Processing version of data
ontime	8175.9999696016	Sum of GTIs [s]
livetime	8072.4705349904	Livetime [s]
ontime0	8172.7589792013	Sum of GTIs [s]
ontime1	8172.7589793205	Sum of GTIs [s]
ontime2	8175.9999696016	Sum of GTIs [s]
ontime3	8175.9999696016	Sum of GTIs [s]
ontime6	8175.9999696016	Sum of GTIs [s]
ontime7	8175.9999696016	Sum of GTIs [s]
l2events	714742	Number of level 2 events

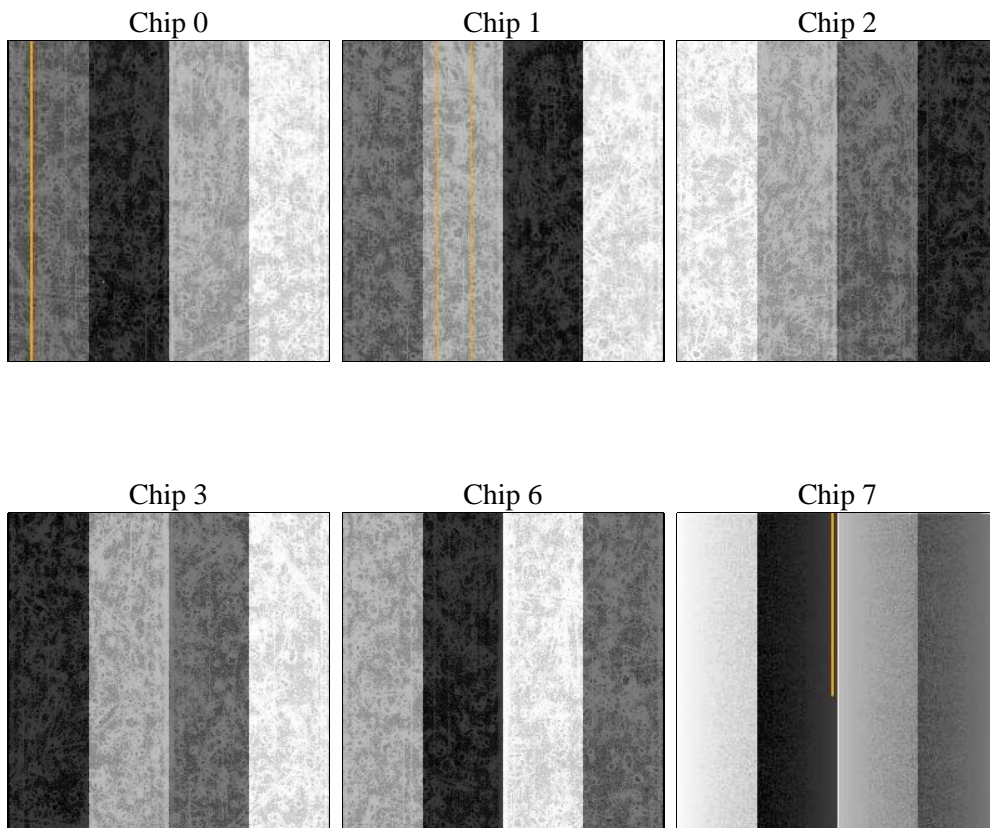
2 OBI

2.1 OBI

2.1.1 Images



2.1.2 Bias



2.1.3 Parameters

obi_num	0	Obi number	sched_exp_time	0.0	[s] Scheduled observation exposure time
ascdsver	8.4.4	Processing system revision	ontime	8175.9999696016	Sum of GTIs [s]
caldbver	4.4.9	 	ontime0	8172.7589792013	Sum of GTIs [s]
date	2012-04-27T03:00:34	Date and time of file creation	ontime1	8172.7589793205	Sum of GTIs [s]
revision	2	Processing version of data	ontime2	8175.9999696016	Sum of GTIs [s]
			ontime3	8175.9999696016	Sum of GTIs [s]
			ontime6	8175.9999696016	Sum of GTIs [s]
			ontime7	8175.9999696016	Sum of GTIs [s]
			l1events	1207460	Number of level 1 events

2.1.4 Events

	ccd 0	ccd 1	ccd 2	ccd 3	ccd 6	ccd 7		ccd 0	ccd 1	ccd 2	ccd 3	ccd 6	ccd 7
level 1 events	192053	192989	199476	201234	201504	220204	grade 0 events	65512	64020	67199	67369	66161	31474
rejected events	73046	73377	79933	81647	77593	67968		34%	33%	33%	33%	32%	14%
rejected %	38%	38%	40%	40%	38%	30%	grade 1 events	493	391	513	535	356	177
								0%	0%	0%	0%	0%	0%
							grade 2 events	21153	22772	20118	20142	22572	33607
								11%	11%	10%	10%	11%	15%
							grade 3 events	7962	7672	8077	8076	7860	14317
								4%	3%	4%	4%	3%	6%
							grade 4 events	7758	7676	8186	8253	7890	13878
								4%	3%	4%	4%	3%	6%
							grade 5 events	3886	4048	3700	4341	4042	10582
								2%	2%	1%	2%	2%	4%
							grade 6 events	17946	18776	17327	17154	20848	60699
								9%	9%	8%	8%	10%	27%
							grade 7 events	67343	67634	74356	75364	71775	55470
								35%	35%	37%	37%	35%	25%

2.2 Compared Parameters

Parameter	Planned	Actual	Parameter	Planned	Actual
Instrument	ACIS	ACIS	Obspar format version number	7	7
Detector	ACIS-012367	ACIS-012367	Obspar file type	PREDICTED	ACTUAL
Grating	NONE	NONE	Obspar update status	NONE	UPDATED
Data mode	FAINT	FAINT	On-chip summing requested	N	N
Observation mode	SECONDARY	SECONDARY	Subarray requested	NONE	NONE
[deg] Pointing RA	0	244.6337271832451	Alternating exposures requested	N	N
[deg] Pointing Dec	0	-39.11348564567863	[s] Primary exposure time	3.2	3.2
[deg] Pointing Roll	0.0	294.8421211470729			
[mm] SIM focus pos	-0.782348	-0.6828225247311905			
[mm] SIM defocus	0	0.8505141146731063			
[mm] SIM translation stage pos	-233.592463	250.4635187648994			
[mm] SIM translation stage offset	0	-0.007540371344731511			
[s] Observation start time (MET)	299086090.073545	299086089.04854			
Observation start date	2007-06-24T15:28:10	2007-06-24T15:28:09			
[s] Observation end time (MET)	299110179.624698	299110178.5997			
Observation end date	2007-06-24T22:09:40	2007-06-24T22:09:38			
Read mode	TIMED	TIMED			

2.3 Star Slots

2.4 FID Slots

A Summary

A.1 Status

V&V Scientist	Jen Lauer
V&V Date (YYYY-MM-DD)	2012.04.27
V&V Edition	1
V&V Disposition and Status	OK
V&V Charge Time	8.1759999696016

A.2 Comments