

V&V Reference Report

L2 ASCDS Version : 8.4.5

Observation 1666 - L2 Version 3
Chandra X-Ray Center

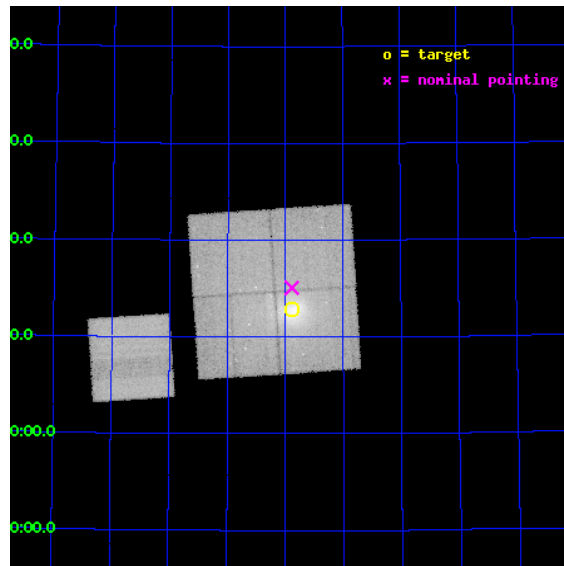
L2 Processing Date : Sep 23 2012

Contents

1	Front	2
2	OBI	3
2.1	OBI	3
2.1.1	Images	3
2.1.2	Bias	3
2.1.3	Parameters	4
2.1.4	Events	4
2.2	Compared Parameters	5
2.3	Aspect	6
2.4	Star Slots	9
2.4.1	Slot 3	9
2.4.2	Slot 4	10
2.4.3	Slot 5	11
2.4.4	Slot 6	12
2.4.5	Slot 7	13
2.5	FID Slots	14
2.5.1	Slot 0	14
2.5.2	Slot 1	15
2.5.3	Slot 2	16
A	Summary	17
A.1	Status	17
A.2	Comments	17

1 Front

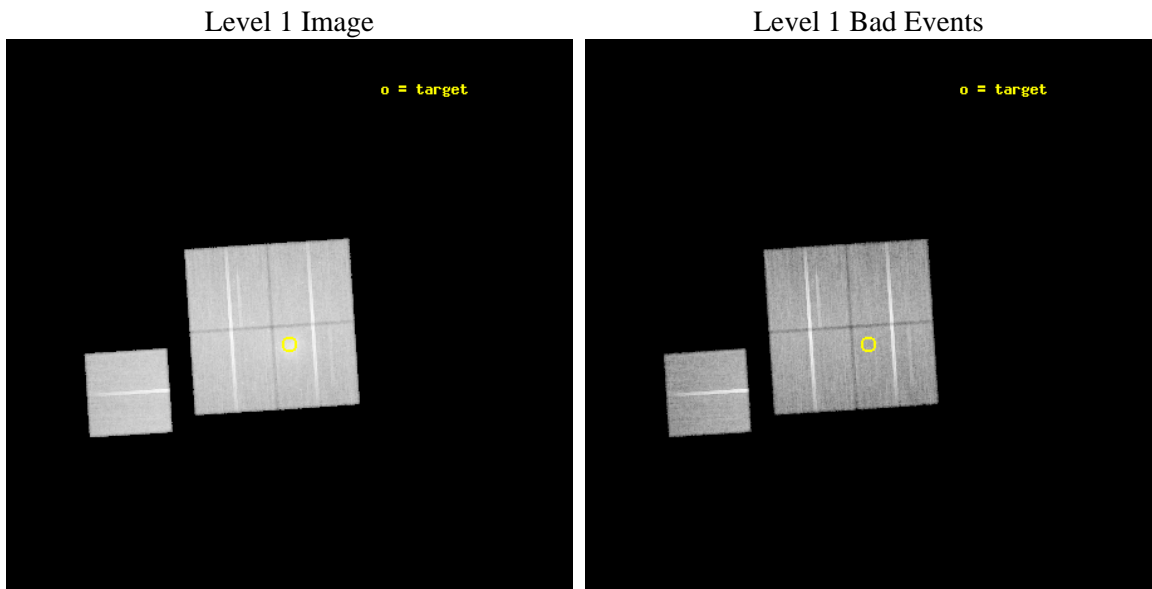
seq_num	800134	Sequence number
obs_id	1666	Observation id
title	DETERMINATION OF H0 AND Q0, 2000 PART 1	Proposal title
observer	DR. LEON VANSPEYBROECK	Principal investigator
object	A2218	Source name
dtycycle	0	
cycle	P	events from which exps? Prim/Second/Both
ra_targ	248.97	Observer's specified target RA [deg]
dec_targ	66.214	Observer's specified target Dec [deg]
ra_nom	248.97182975399	Nominal RA [deg]
dec_nom	66.251351167829	Nominal Dec [deg]
roll_nom	266.25920727516	Nominal Roll [deg]
revision	3	Processing version of data
ontime	49249.225726649	Sum of GTIs [s]
liveltime	48605.748335778	Livetime [s]
ontime0	49249.225726649	Sum of GTIs [s]
ontime1	49249.266796559	Sum of GTIs [s]
ontime2	49239.884955853	Sum of GTIs [s]
ontime3	49249.348856643	Sum of GTIs [s]
ontime6	49242.902716294	Sum of GTIs [s]
l2events	299912	Number of level 2 events



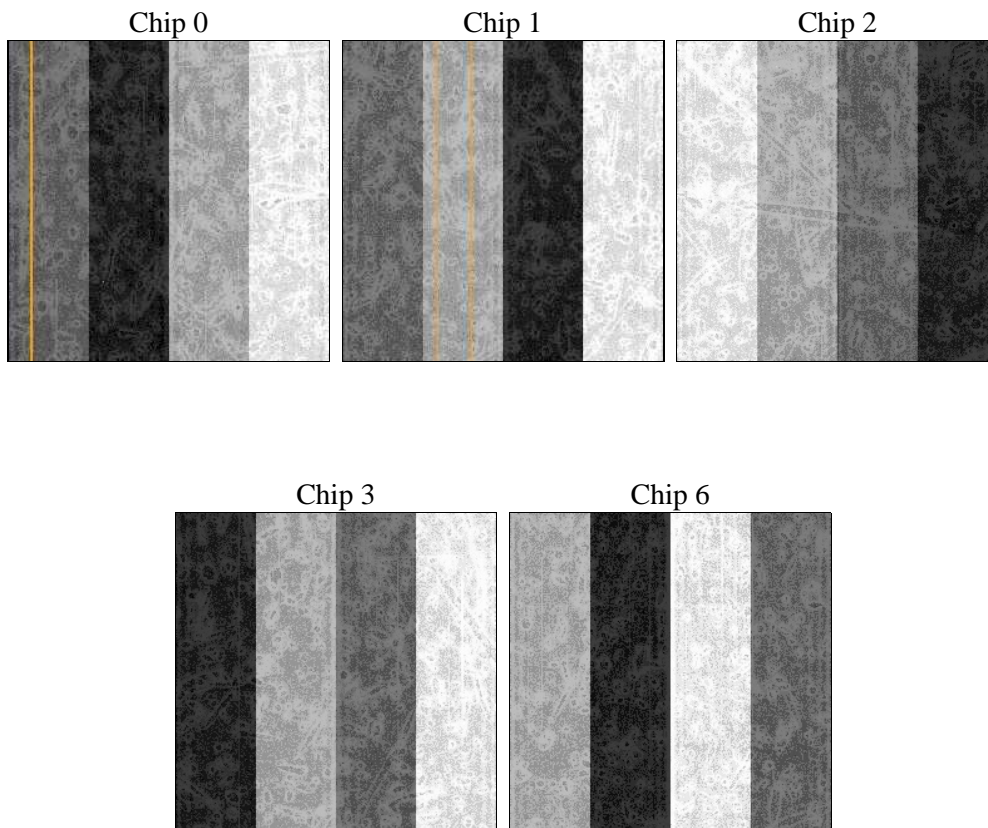
2 OBI

2.1 OBI

2.1.1 Images



2.1.2 Bias



2.1.3 Parameters

obi_num	0	Obi number	sched_exp_time	49154.773000	[s] Scheduled observation exposure time
ascdsver	8.4.5	Processing system revision	ontime	49249.225726649	Sum of GTIs [s]
caldbver	4.5.1.1	 	ontime0	49249.225726649	Sum of GTIs [s]
date	2012-09-23T13:30:53	Date and time of file creation	ontime1	49249.266796559	Sum of GTIs [s]
revision	3	Processing version of data	ontime2	49239.884955853	Sum of GTIs [s]
			ontime3	49249.348856643	Sum of GTIs [s]
			ontime6	49242.902716294	Sum of GTIs [s]
			l1events	1588997	Number of level 1 events

2.1.4 Events

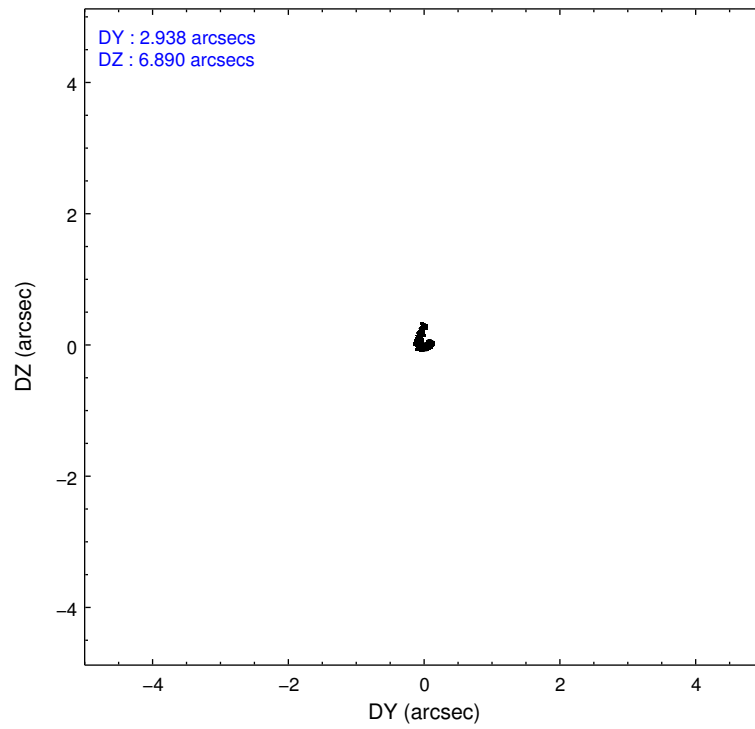
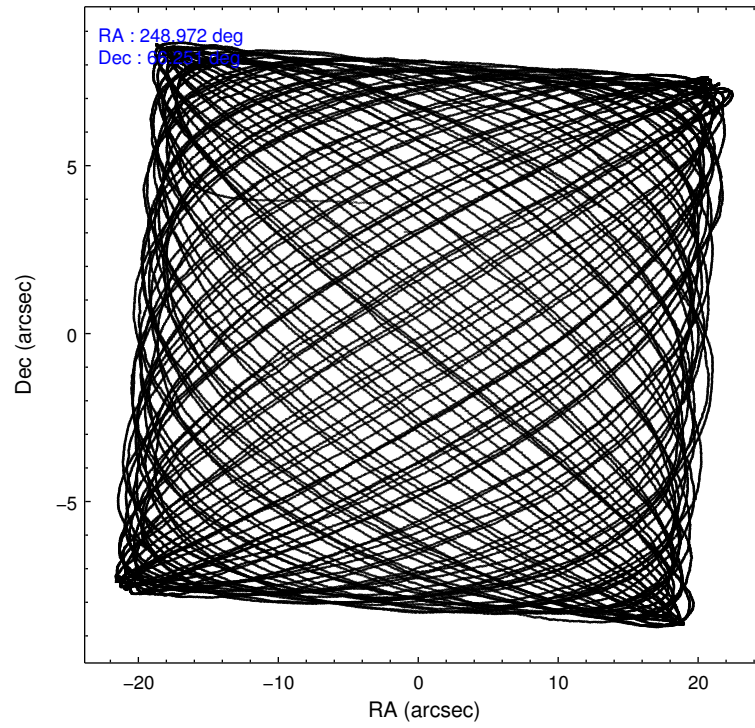
	ccd 0	ccd 1	ccd 2	ccd 3	ccd 6
level 1 events	331947	300361	322710	316523	317456
rejected events	234633	241062	260763	261931	255723
rejected %	70%	80%	80%	82%	80%

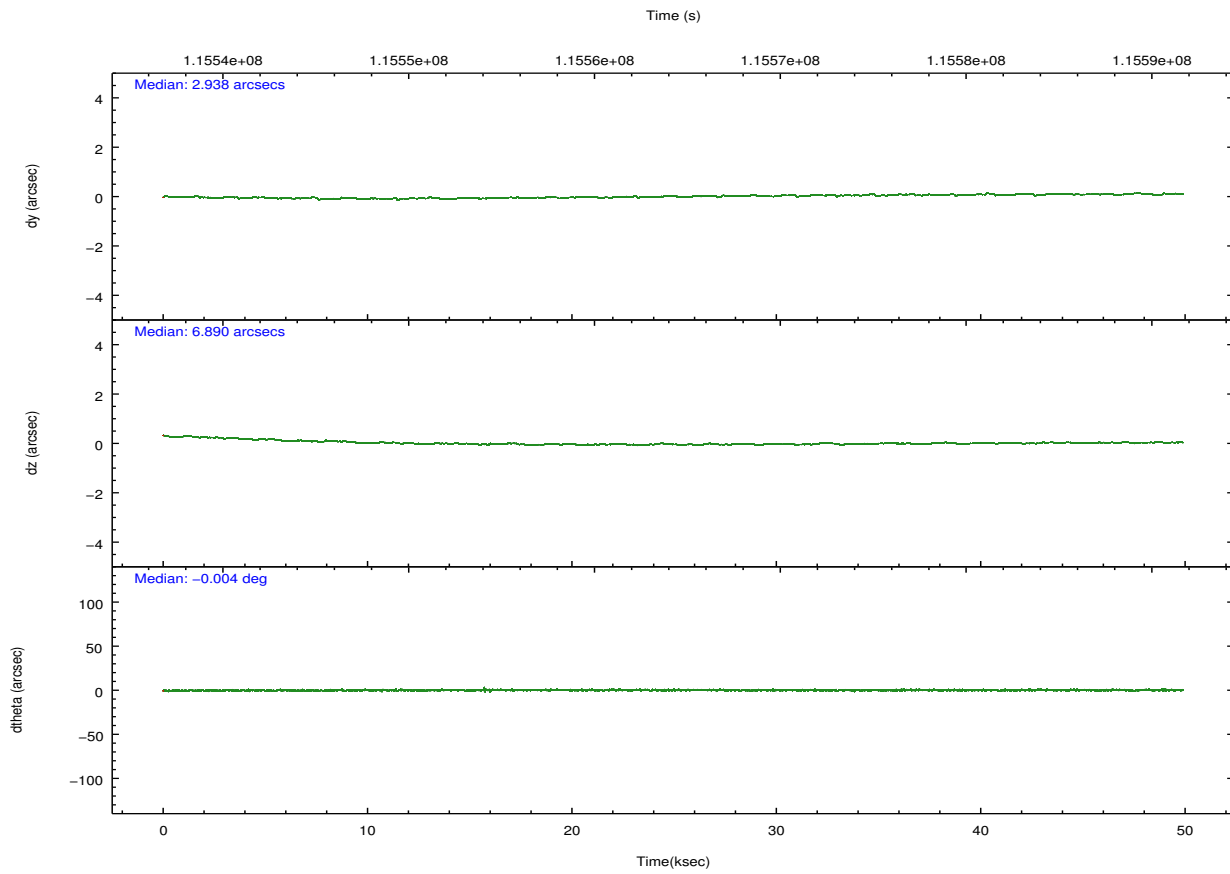
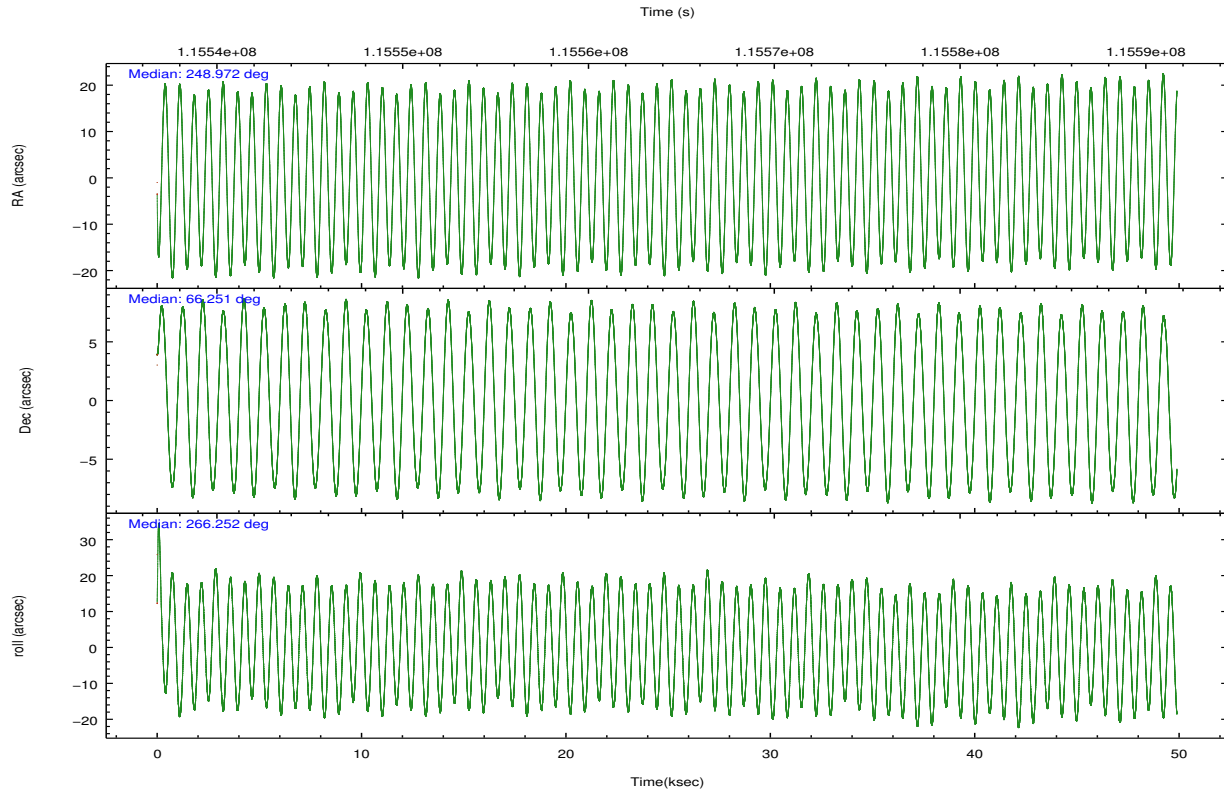
	ccd 0	ccd 1	ccd 2	ccd 3	ccd 6
grade 0 events	63257	30306	34933	28597	33744
	19%	10%	10%	9%	10%
grade 1 events	285	184	196	190	195
	0%	0%	0%	0%	0%
grade 2 events	15934	12454	12186	11270	12284
	4%	4%	3%	3%	3%
grade 3 events	4895	4231	3720	3693	3767
	1%	1%	1%	1%	1%
grade 4 events	4818	4170	3704	3701	3833
	1%	1%	1%	1%	1%
grade 5 events	10793	11517	10216	11598	12023
	3%	3%	3%	3%	3%
grade 6 events	8424	8143	7408	7335	8111
	2%	2%	2%	2%	2%
grade 7 events	223541	229356	250347	250139	243499
	67%	76%	77%	79%	76%

2.2 Compared Parameters

Parameter	Planned	Actual	Parameter	Planned	Actual
Instrument	ACIS	ACIS	Obspar format version number	7	7
Detector	ACIS-01236	ACIS-01236	Obspar file type	PREDICTED	ACTUAL
Grating	NONE	NONE	Obspar update status	NONE	UPDATED
Data mode	VFAINT	VFAINT	Number of optional ACIS chips dropped	0	0
Observation mode	POINTING	POINTING	On-chip summing requested	N	N
[deg] Pointing RA	248.941586	248.9718297539893	Subarray requested	NONE	NONE
[deg] Pointing Dec	66.275937	66.25135116782891	Alternating exposures requested	N	N
[deg] Pointing Roll	266.078206	266.259207275164	[s] Primary exposure time	0.000000	3.1
[mm] SIM focus pos	-0.782348	-0.7809083437167272			
[mm] SIM defocus	0	0.001439871863259334			
[mm] SIM translation stage pos	-240.592463	-240.5872882603717			
[mm] SIM translation stage offset	7	6.994835257442048			
[s] Observation start time (MET)	115540020.184000	115538783.59869			
Observation start date	2001-08-30T06:25:56	2001-08-30T06:06:23			
[s] Observation end time (MET)	115589175.184000	115589489.32569			
Observation end date	2001-08-30T20:05:11	2001-08-30T20:11:29			
Read mode	TIMED	TIMED			

2.3 Aspect



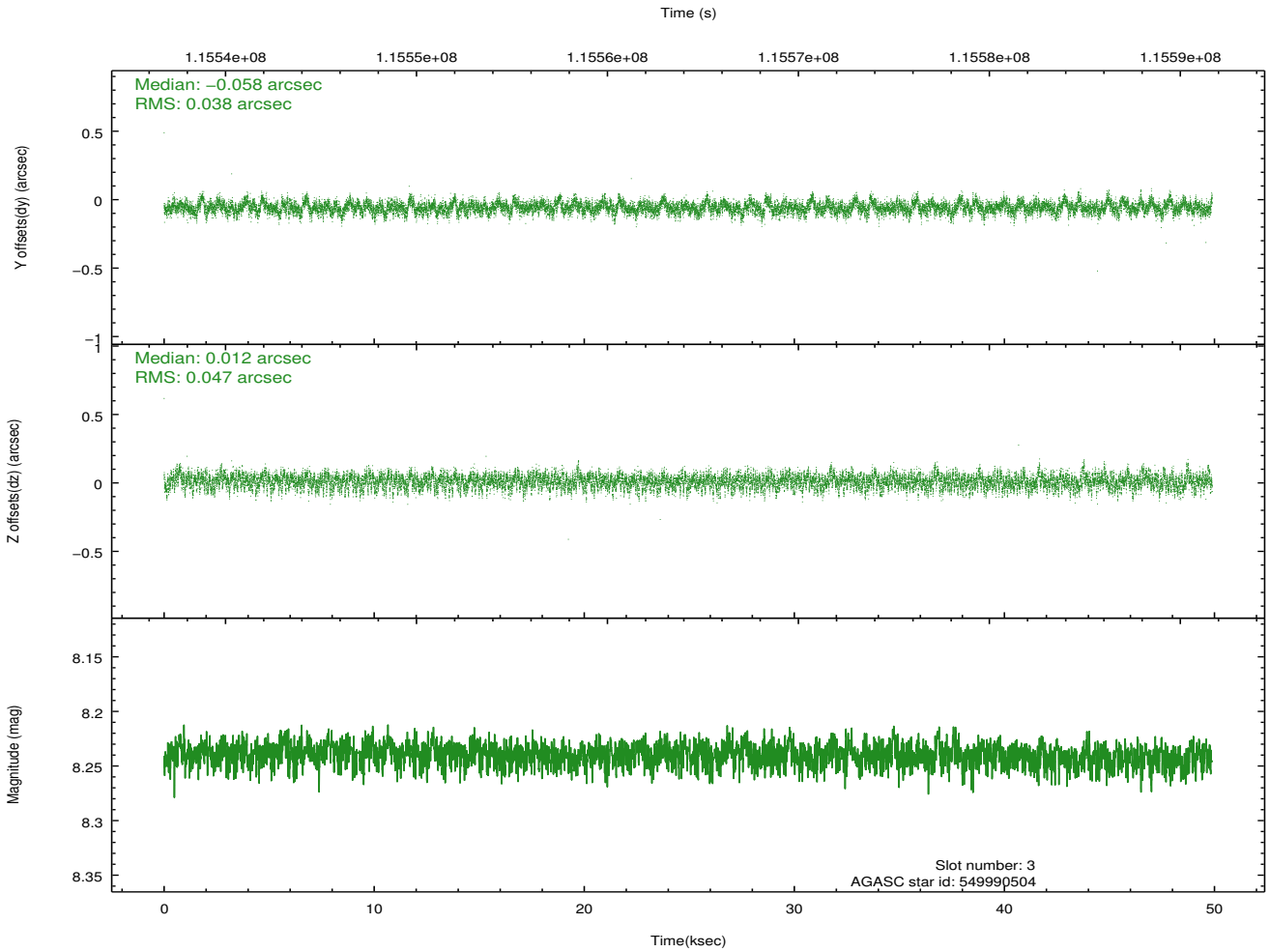
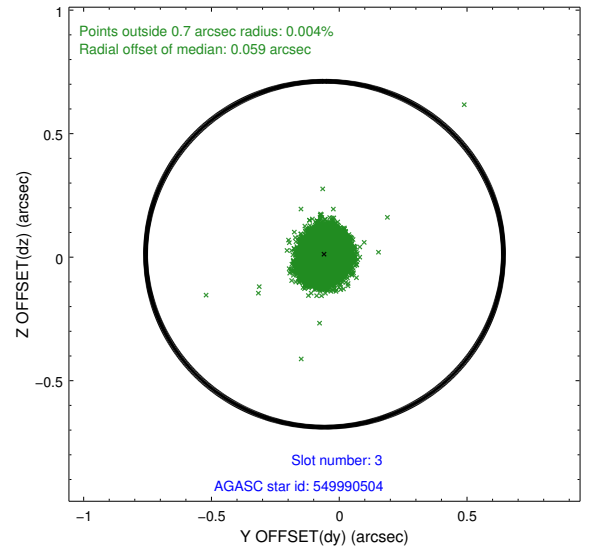
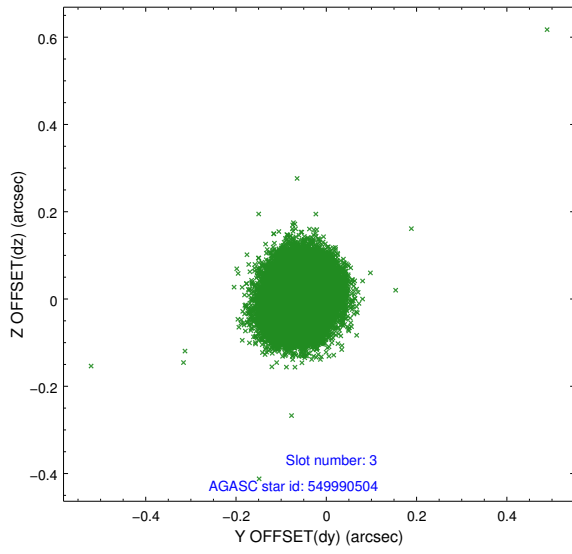


Slot Statistics

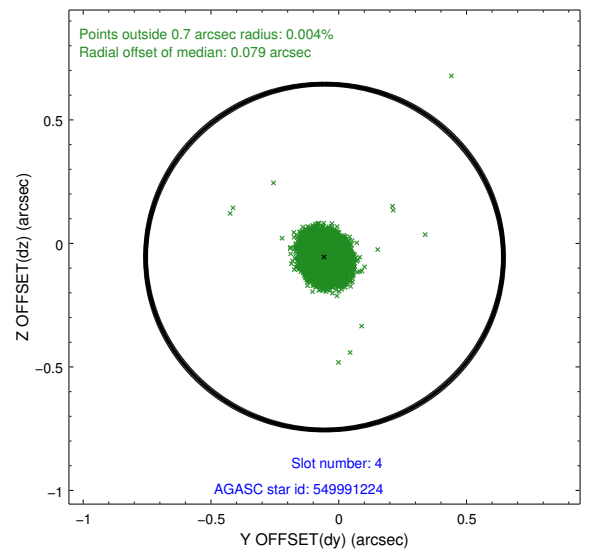
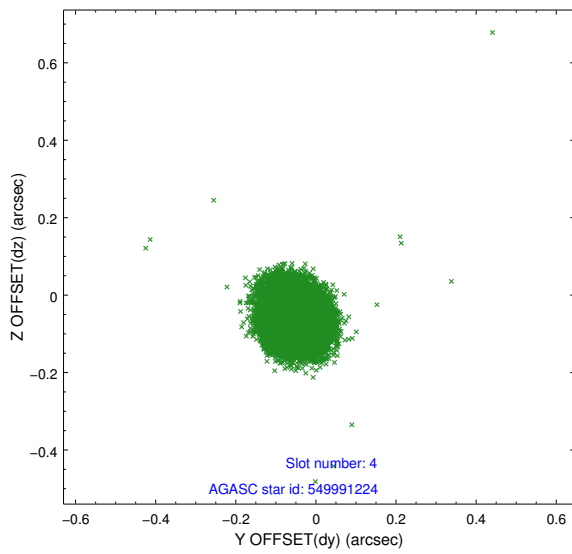
slot	status	id	mag	n_pts	med_dy	med_dz	dr1	dr2	ra	dec	mean_y	mean_z
0	FID	ACIS-I-3	7.46	12167	-0.013	0.138	0.010	0.023	0.000000	0.000000	54.41	-819.60
1	FID	ACIS-I-5	7.23	12165	-0.056	0.021	0.008	0.013	0.000000	0.000000	-1811.30	1210.95
2	FID	ACIS-I-6	7.25	12165	-0.023	-0.090	0.008	0.017	0.000000	0.000000	402.47	1855.39
3	GUIDE	549990504	8.24	24334	-0.058	0.012	0.064	0.104	248.383682	66.735499	-1599.84	-904.91
4	GUIDE	549991224	8.46	24332	-0.056	-0.055	0.060	0.095	249.498987	66.224682	124.83	819.48
5	GUIDE	549990712	8.83	24198	0.055	0.053	0.074	0.128	248.602605	66.248787	129.83	-483.49
6	GUIDE	549990640	8.76	24330	0.025	-0.005	0.064	0.104	247.861354	66.249817	187.59	-1556.84
7	GUIDE	549990920	9.11	24321	0.035	-0.003	0.078	0.128	249.731920	66.195262	203.81	1165.12

2.4 Star Slots

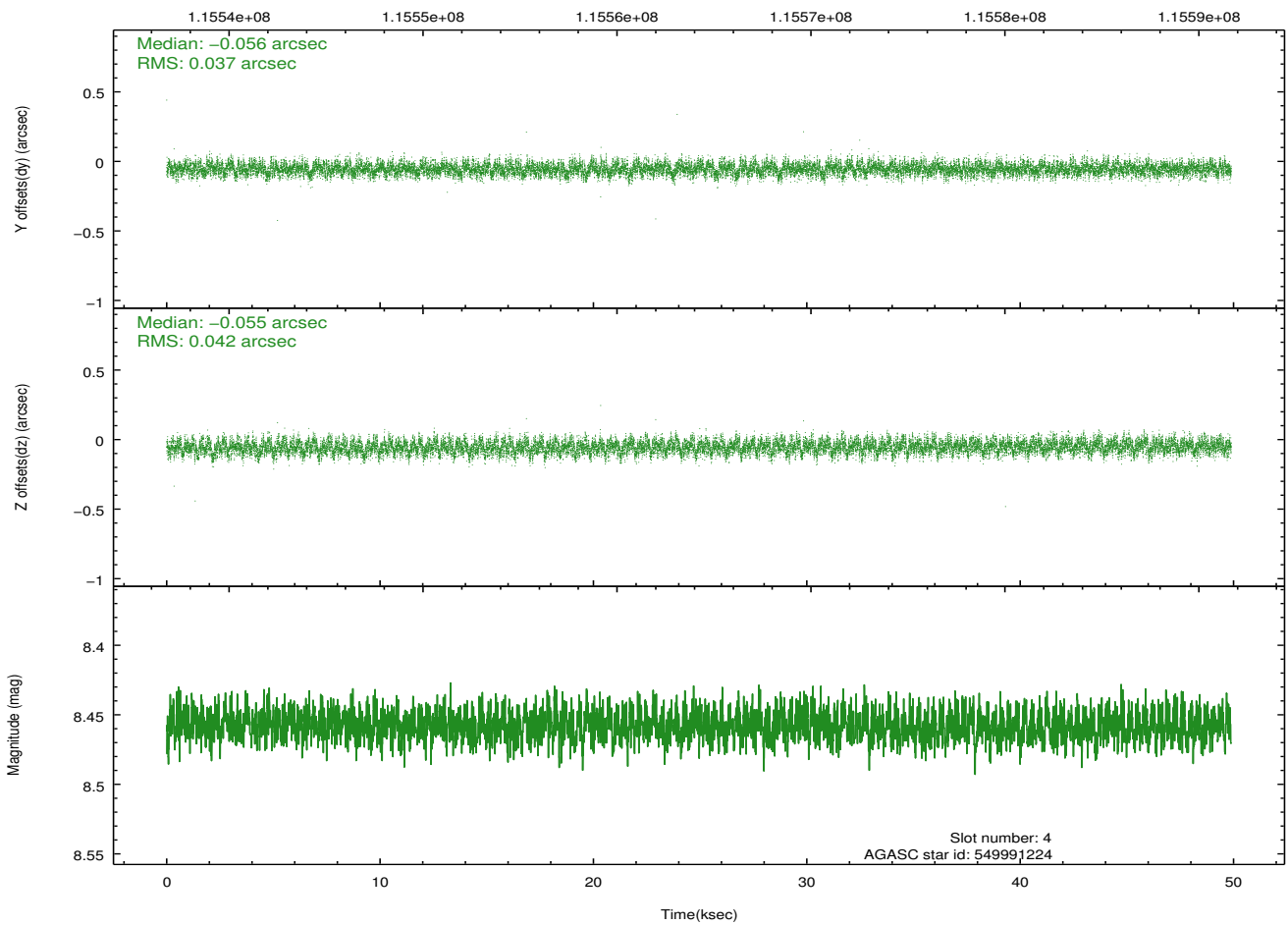
2.4.1 Slot 3



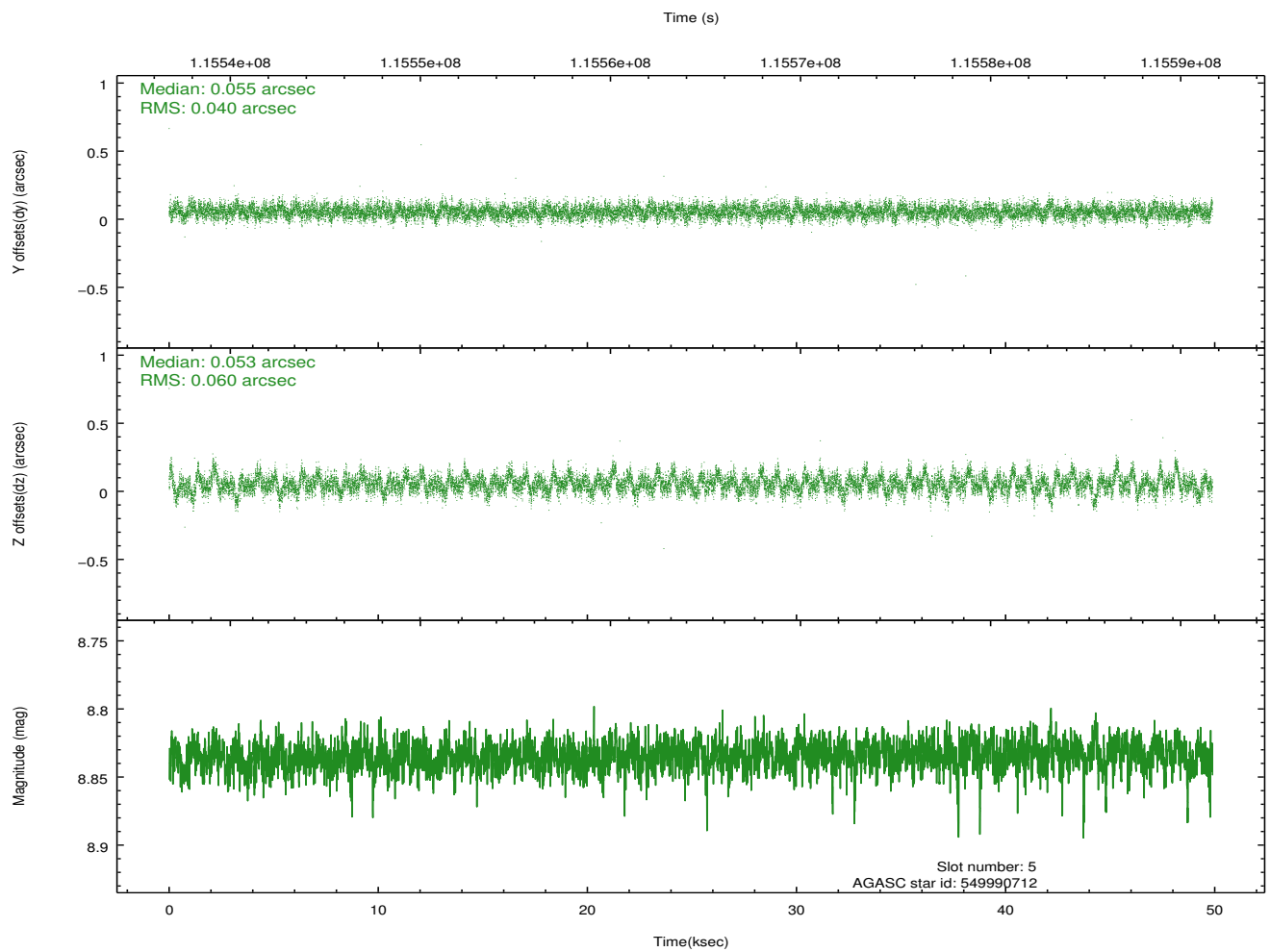
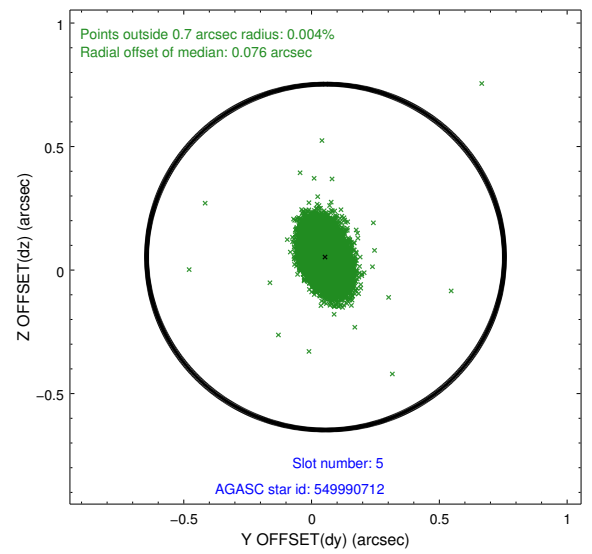
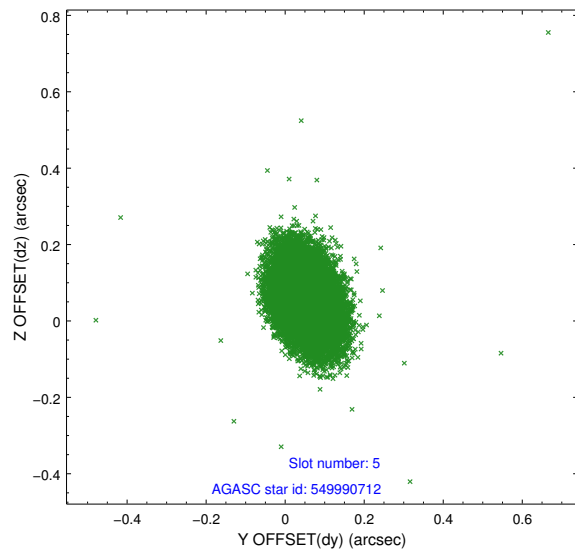
2.4.2 Slot 4



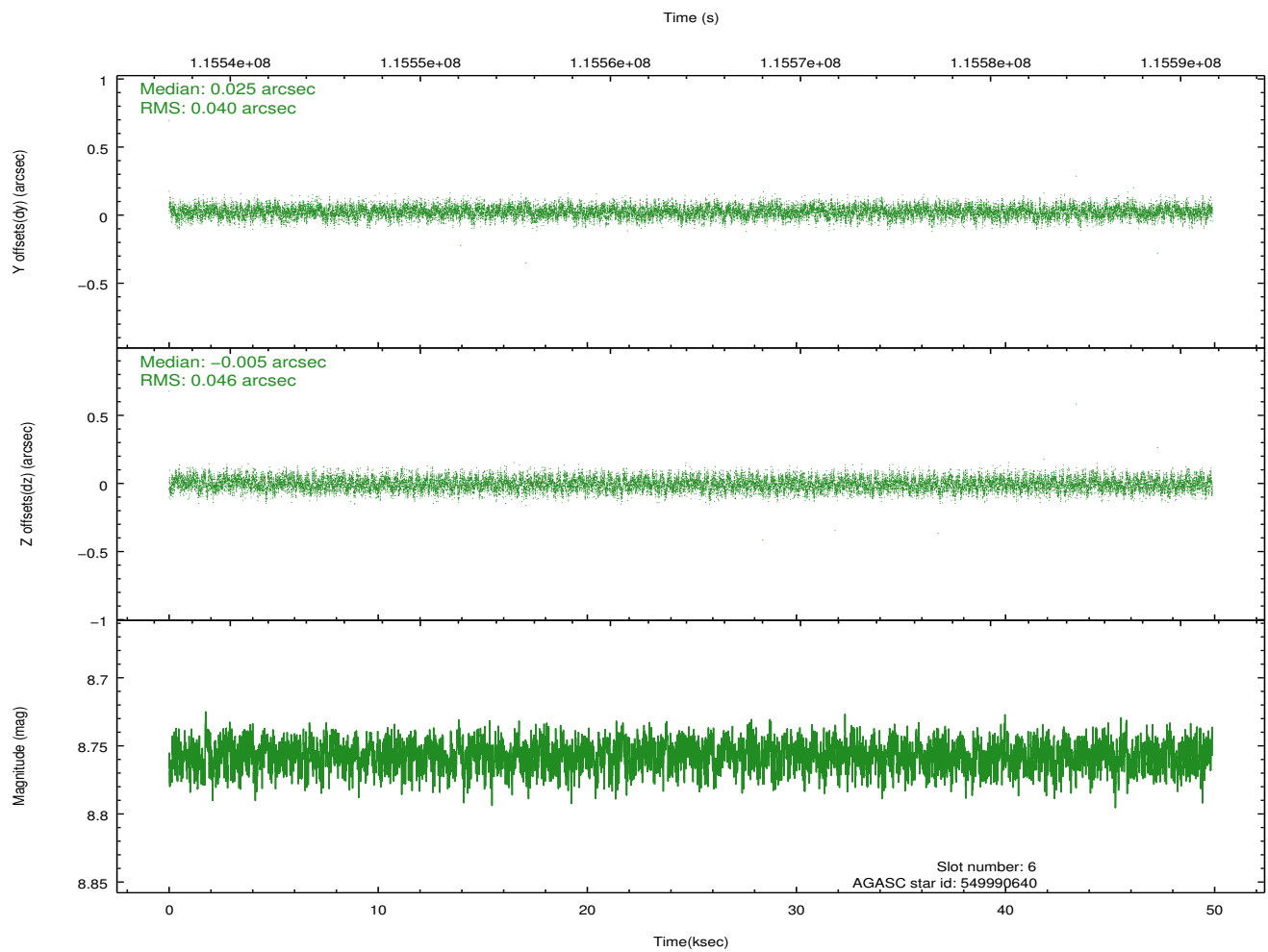
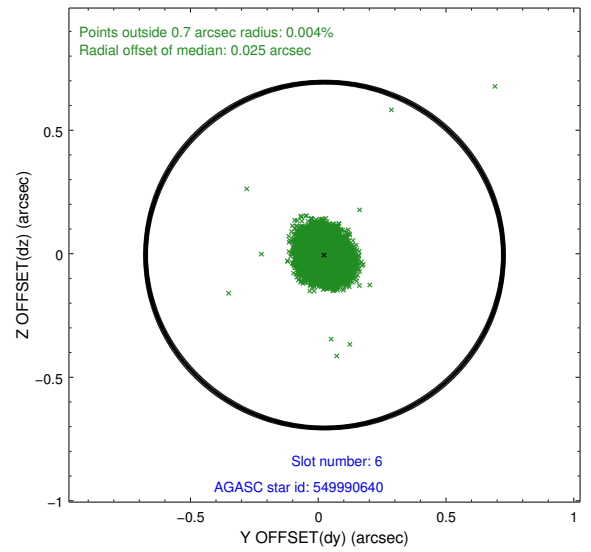
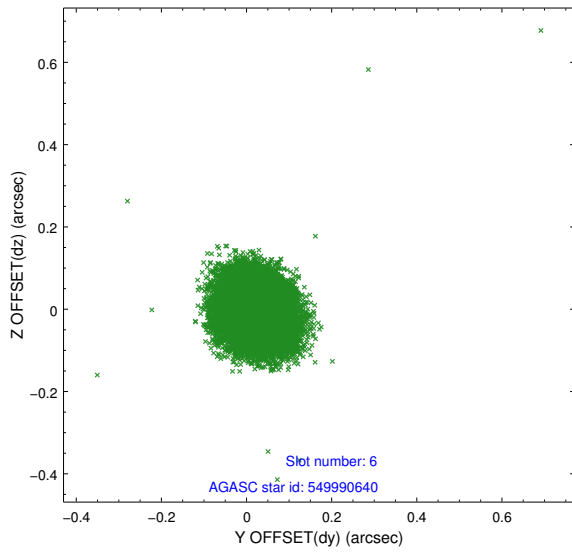
Time (s)



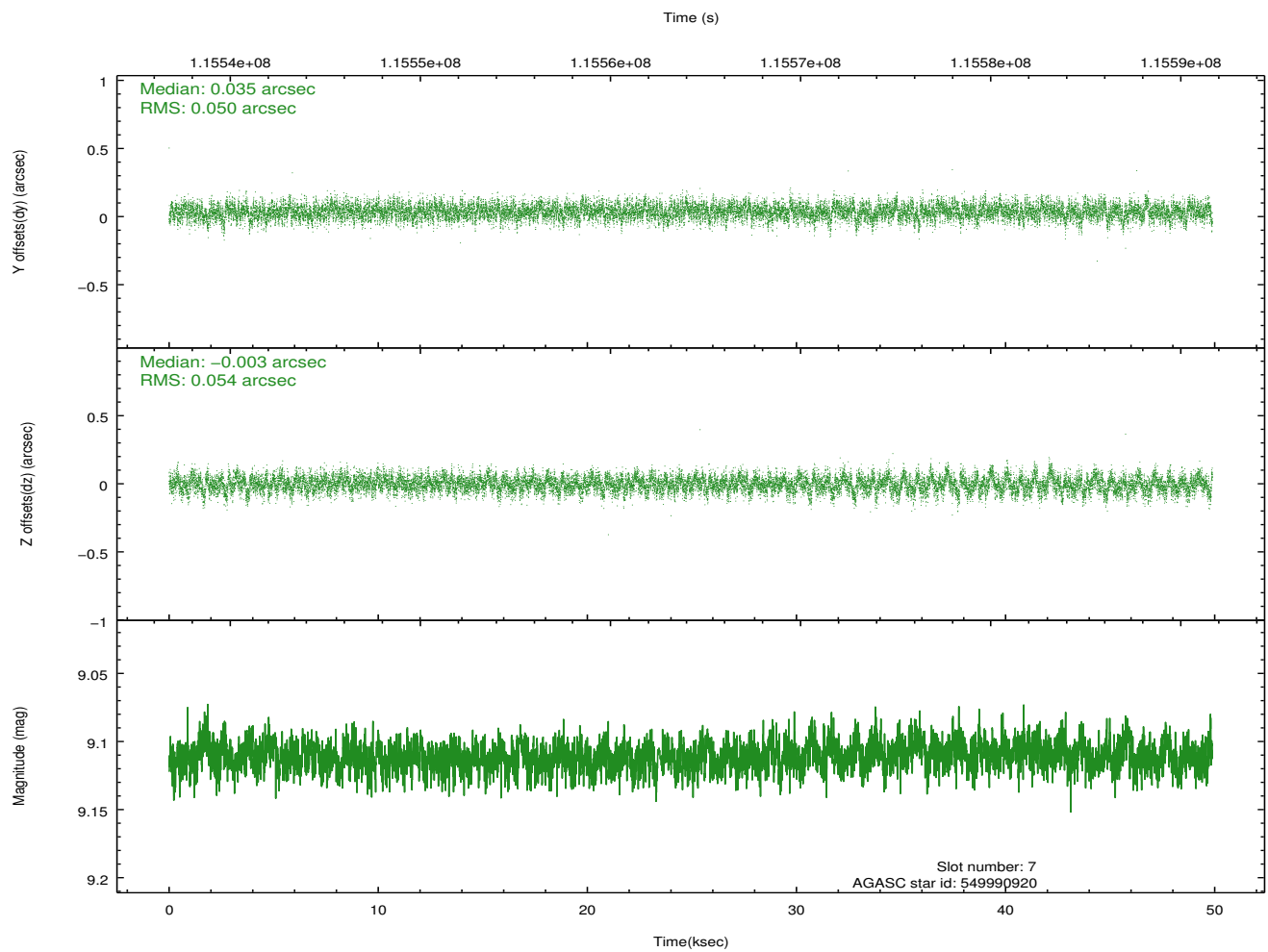
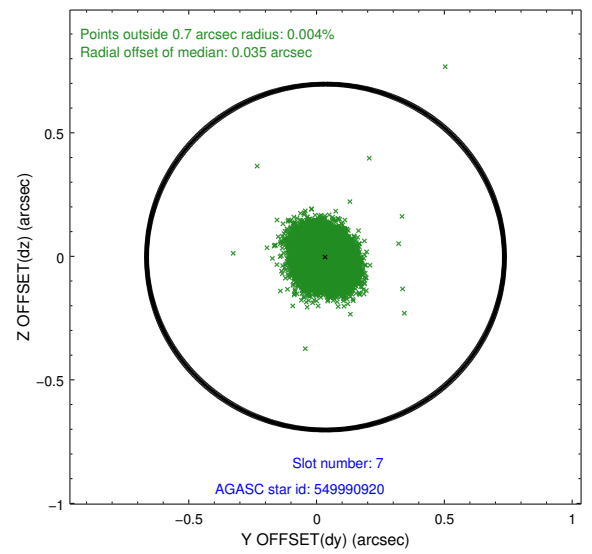
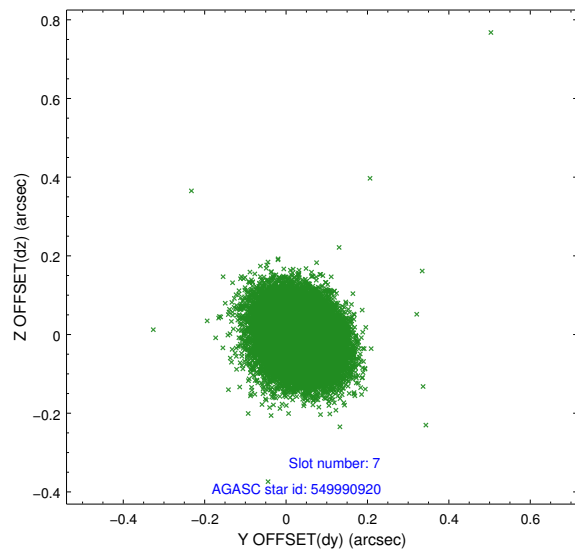
2.4.3 Slot 5



2.4.4 Slot 6

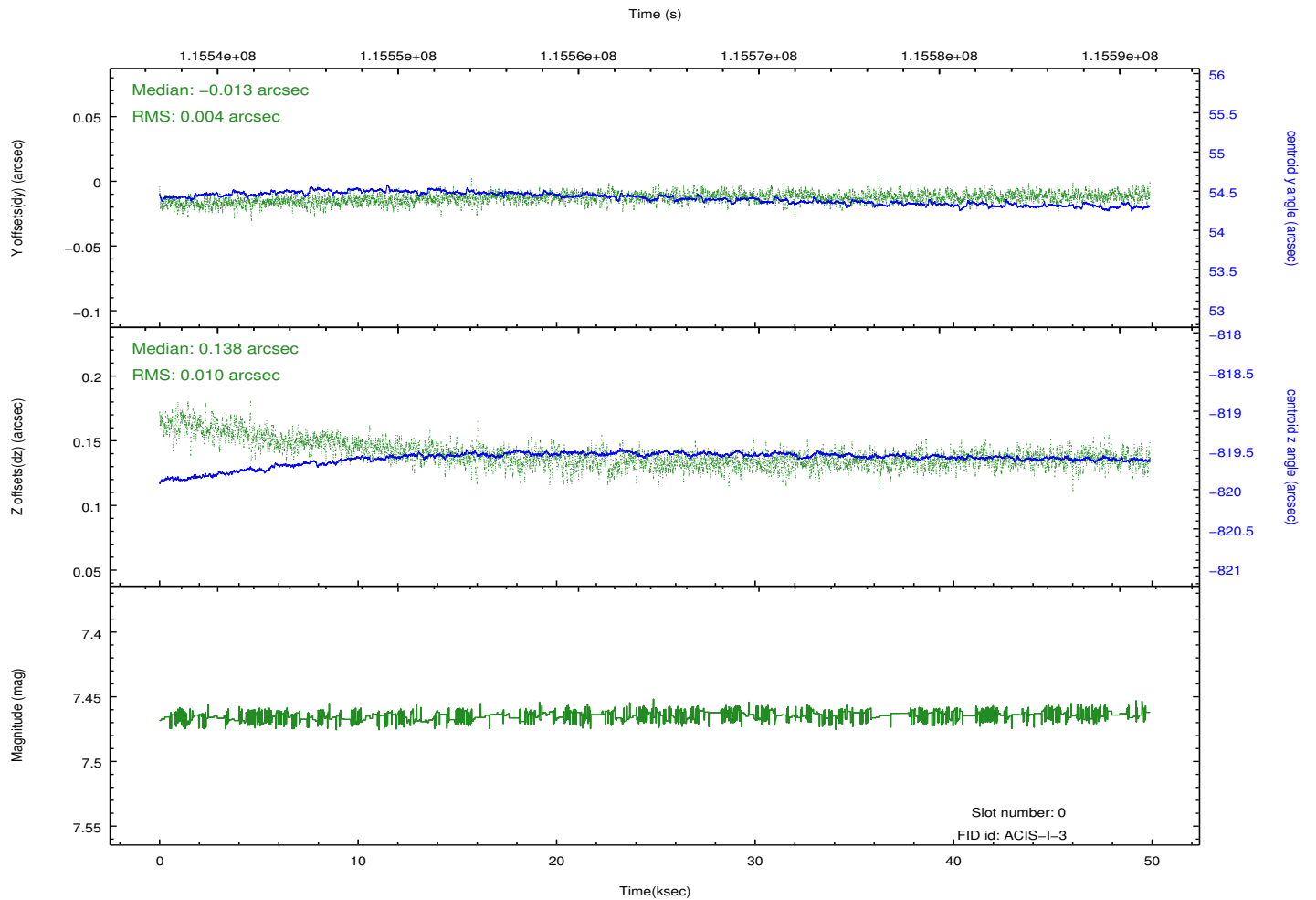
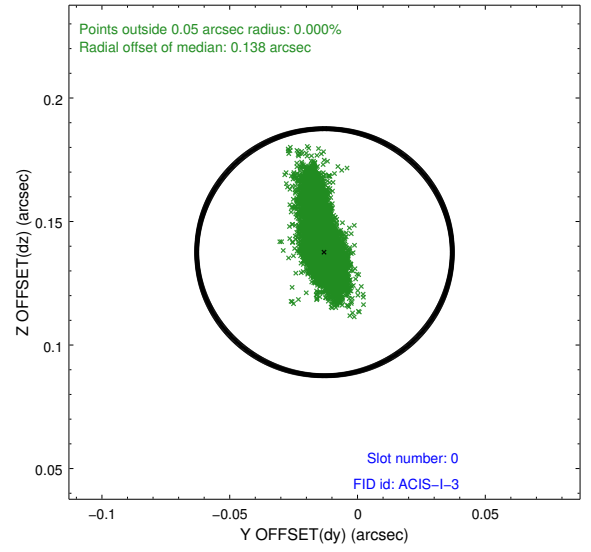
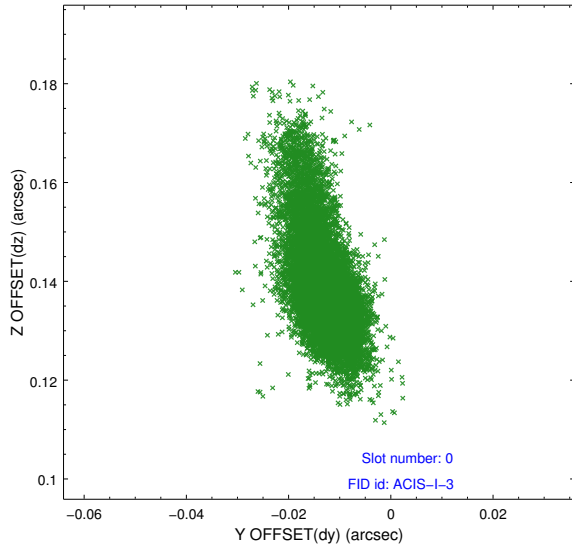


2.4.5 Slot 7

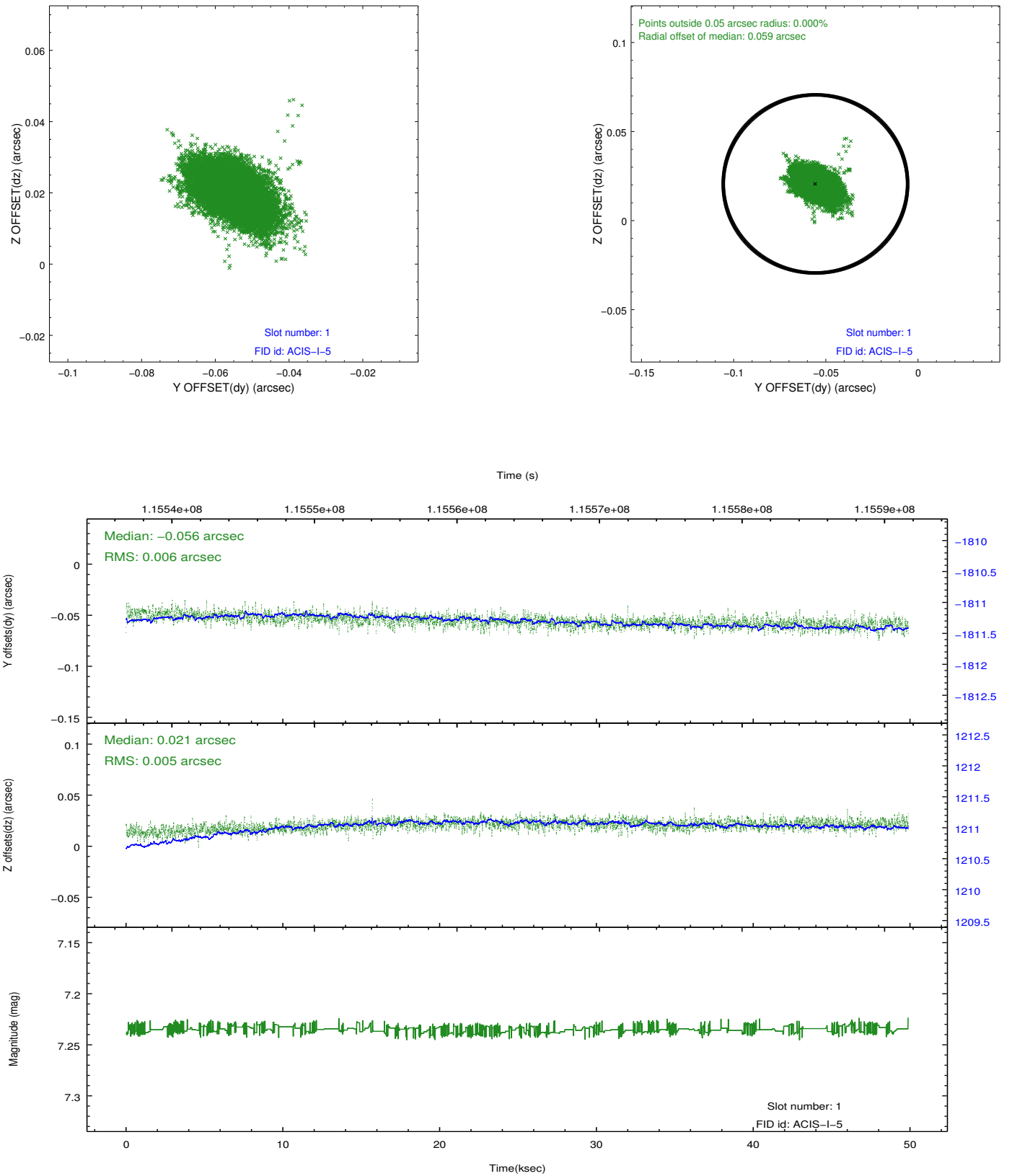


2.5 FID Slots

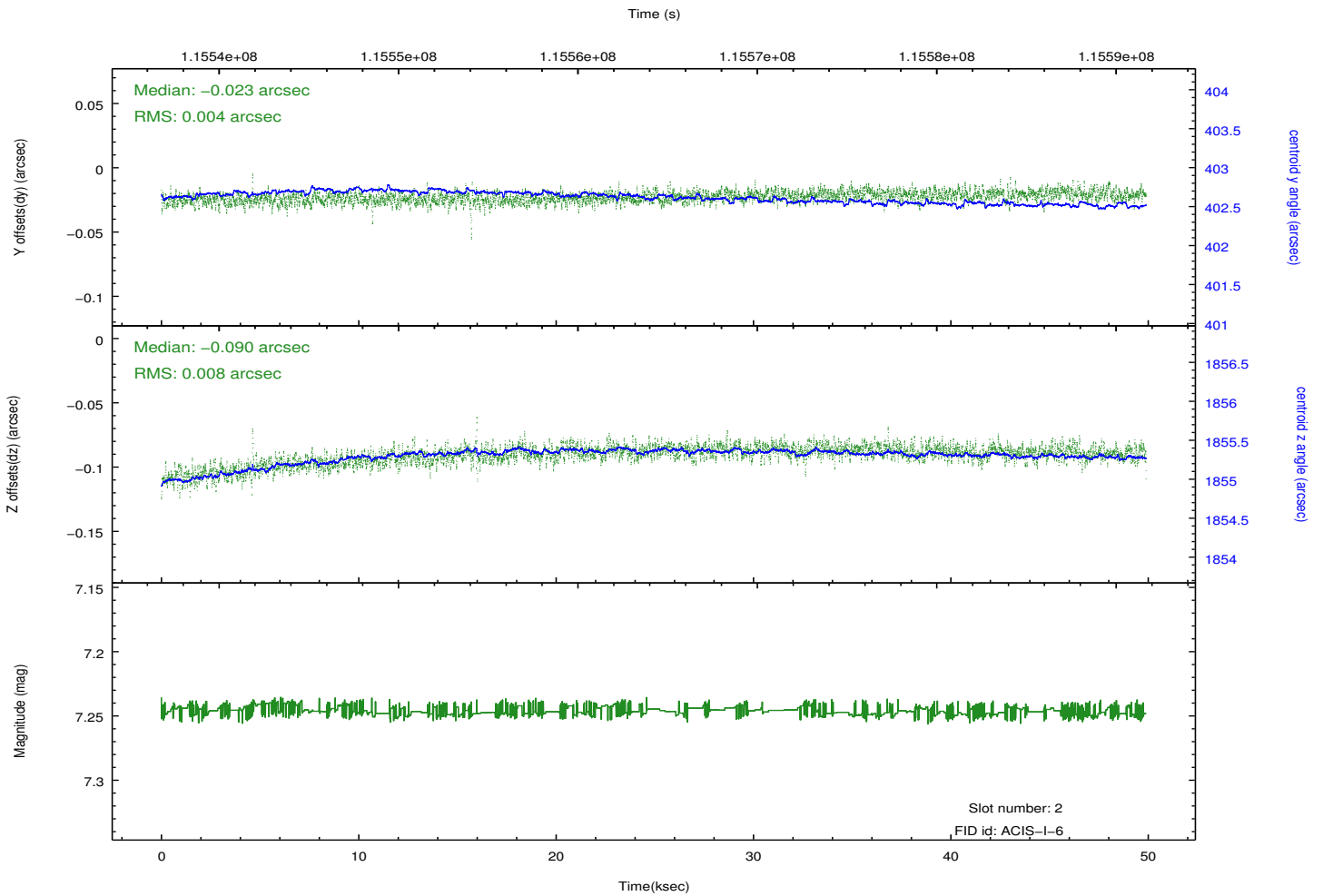
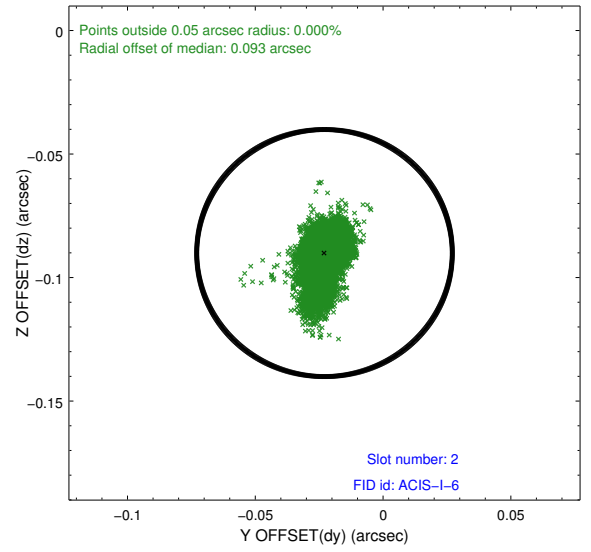
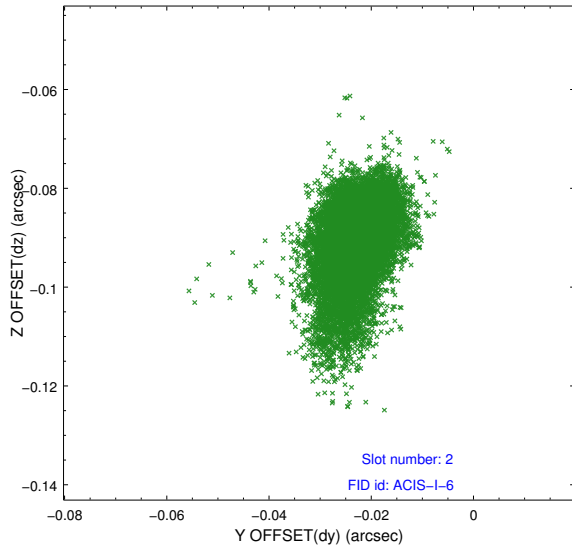
2.5.1 Slot 0



2.5.2 Slot 1



2.5.3 Slot 2



A Summary

A.1 Status

V&V Scientist	Jen Lauer
V&V Date (YYYY-MM-DD)	2012.09.26
V&V Edition	1
V&V Disposition and Status	OK
V&V Charge Time	49.243

A.2 Comments