

V&V Reference Report

L2 ASCDS Version : 8.4.5

Observation 2525 - L2 Version 3
Chandra X-Ray Center

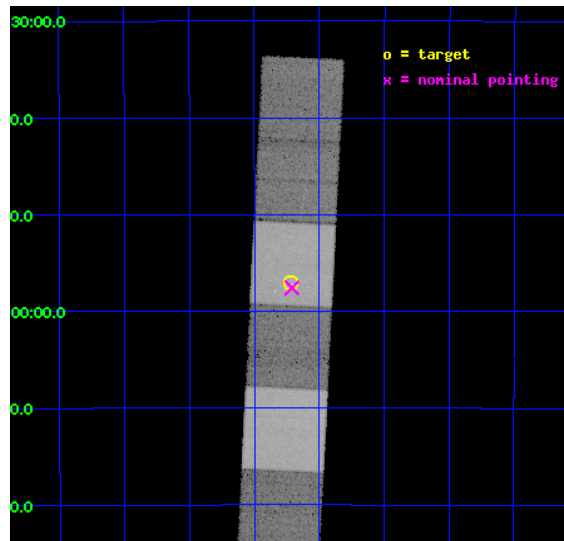
L2 Processing Date : Oct 4 2012

Contents

1	Front	2
2	OBI	3
2.1	OBI	3
2.1.1	Images	3
2.1.2	Bias	3
2.1.3	Parameters	4
2.1.4	Events	4
2.2	Compared Parameters	5
2.3	Aspect	6
2.4	Star Slots	9
2.4.1	Slot 3	9
2.4.2	Slot 4	10
2.4.3	Slot 5	11
2.4.4	Slot 6	12
2.4.5	Slot 7	13
2.5	FID Slots	14
2.5.1	Slot 0	14
2.5.2	Slot 1	15
2.5.3	Slot 2	16
3	Gratings	17
3.1	HEG Arm	17
3.2	MEG Arm	19
A	Summary	21
A.1	Status	21
A.2	Comments	21

1 Front

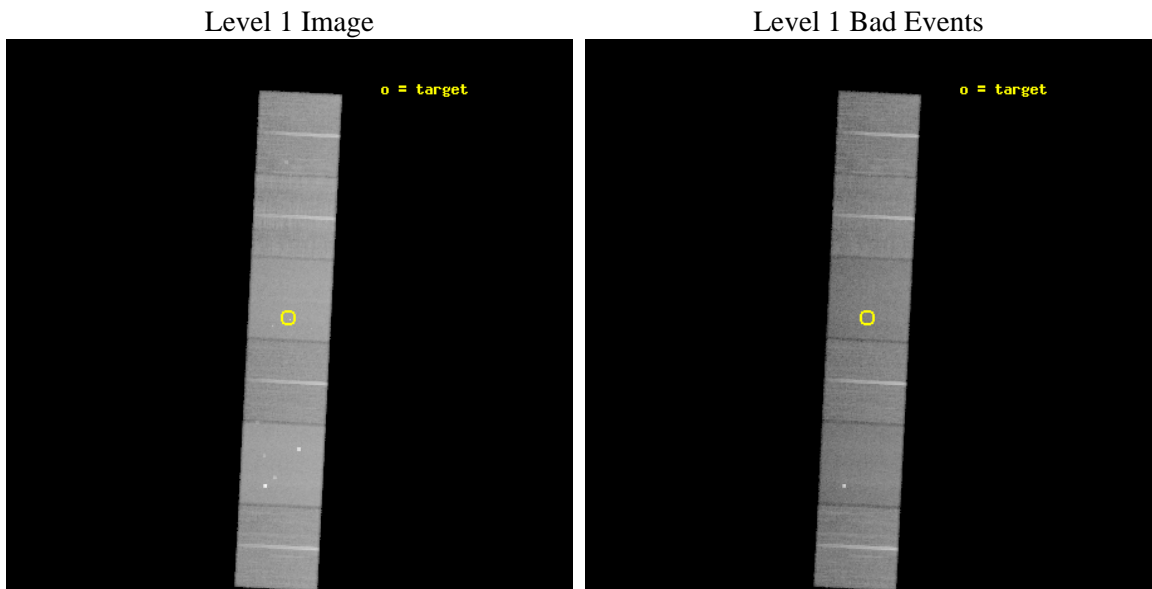
seq_num	200133	Sequence number
obs_id	2525	Observation id
title	HIGH RESOLUTION SPECTROSCOPY OF THE YOUNG STELLAR CLUSTER NGC 2362	
observer	Prof Claude Canizares	Principal investigator
object	NGC2362	Source name
dtcycle	0	
cycle	P	events from which exps? Prim/Second/Both
ra_targ	109.679167	Observer's specified target RA [deg]
dec_targ	-24.949972	Observer's specified target Dec [deg]
ra_nom	109.6778074282	Nominal RA [deg]
dec_nom	-24.959586302494	Nominal Dec [deg]
roll_nom	272.86819895792	Nominal Roll [deg]
revision	3	Processing version of data
ontime	43755.781132251	Sum of GTIs [s]
livetime	43201.719084986	Livetime [s]
ontime4	43749.340261683	Sum of GTIs [s]
ontime5	43755.740092248	Sum of GTIs [s]
ontime6	43758.940012515	Sum of GTIs [s]
ontime7	43755.781132251	Sum of GTIs [s]
ontime8	43755.658002242	Sum of GTIs [s]
ontime9	43752.375982061	Sum of GTIs [s]
l2events	417859	Number of level 2 events



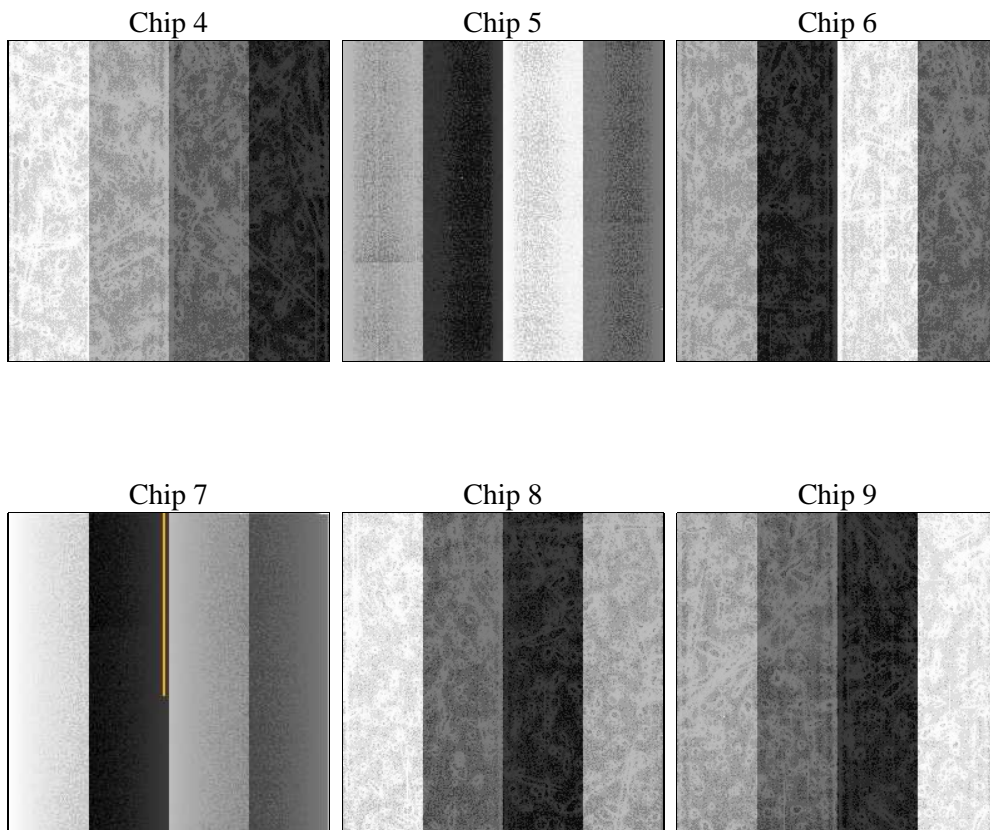
2 OBI

2.1 OBI

2.1.1 Images



2.1.2 Bias



2.1.3 Parameters

obi_num	0	Obi number	sched_exp_time	43800.000000	[s] Scheduled observation exposure time
ascdsver	8.4.5	Processing system revision	ontime	43755.781132251	Sum of GTIs [s]
caldbver	4.5.2	 	ontime4	43749.340261683	Sum of GTIs [s]
date	2012-10-04T18:14:11	Date and time of file creation	ontime5	43755.740092248	Sum of GTIs [s]
revision	3	Processing version of data	ontime6	43758.940012515	Sum of GTIs [s]
			ontime7	43755.781132251	Sum of GTIs [s]
			ontime8	43755.658002242	Sum of GTIs [s]
			ontime9	43752.375982061	Sum of GTIs [s]
			l1events	1952981	Number of level 1 events

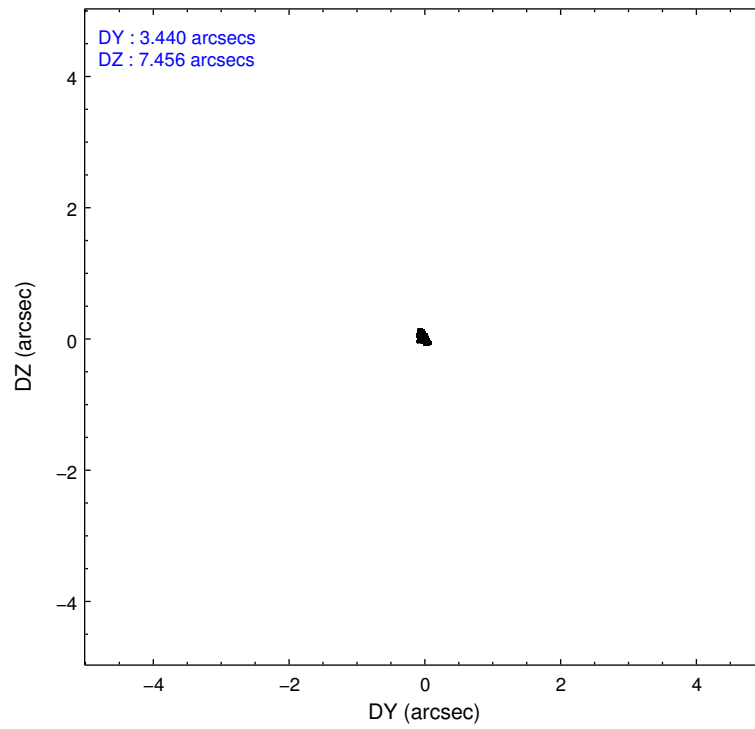
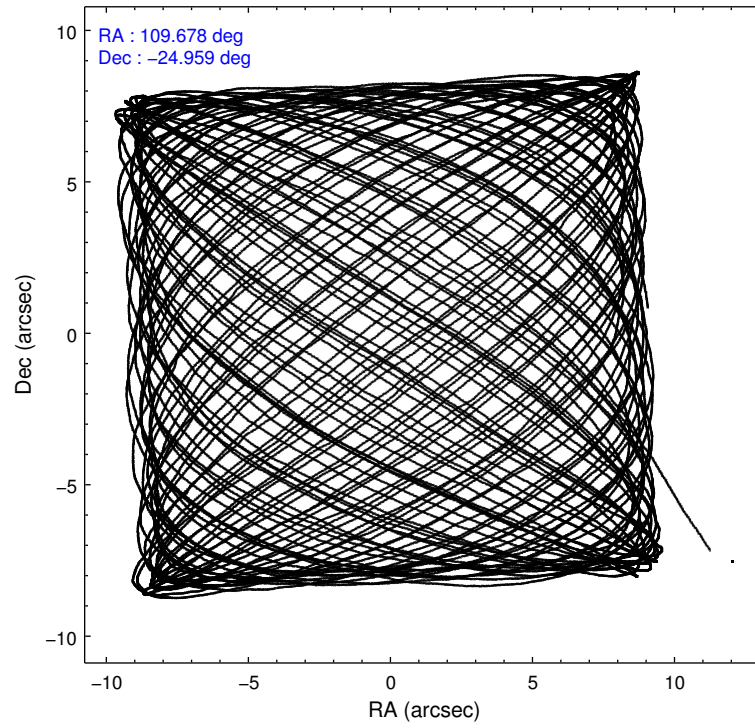
2.1.4 Events

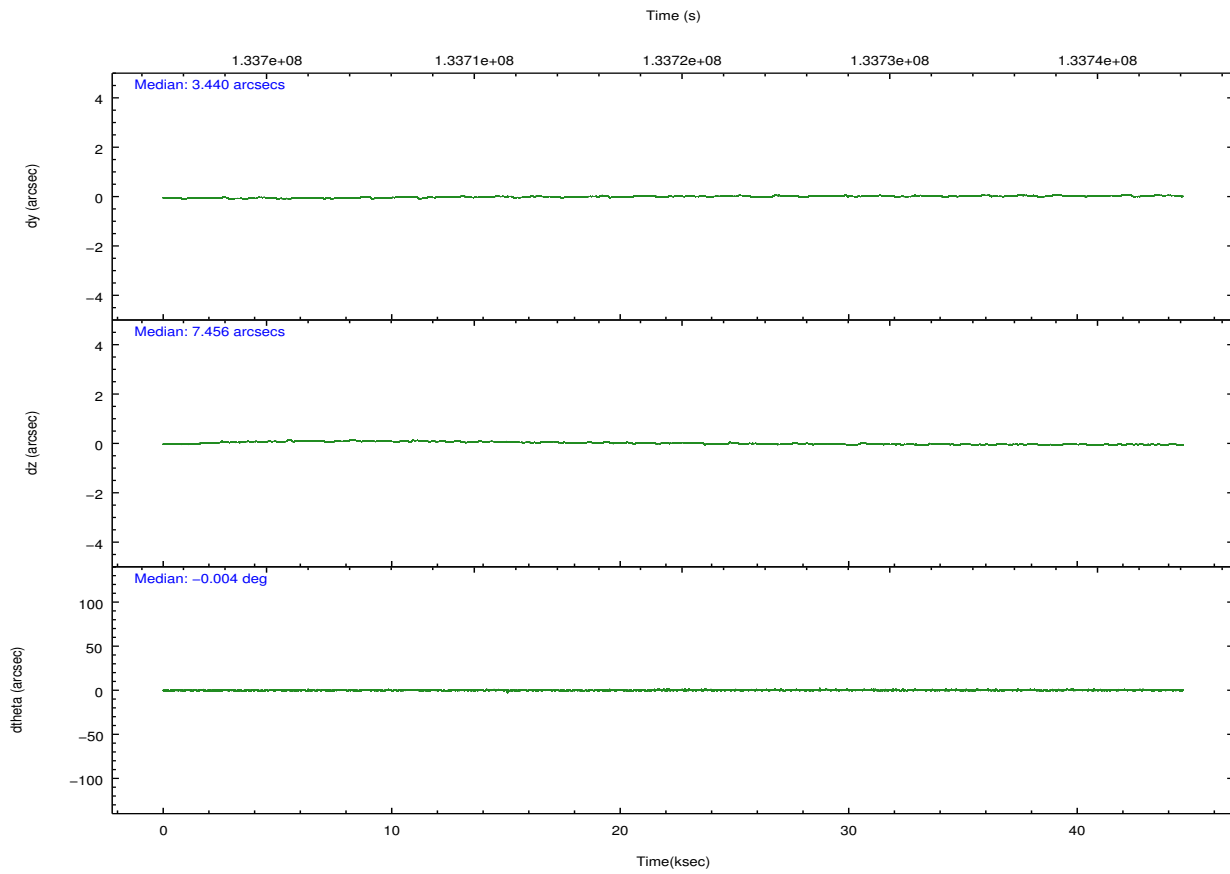
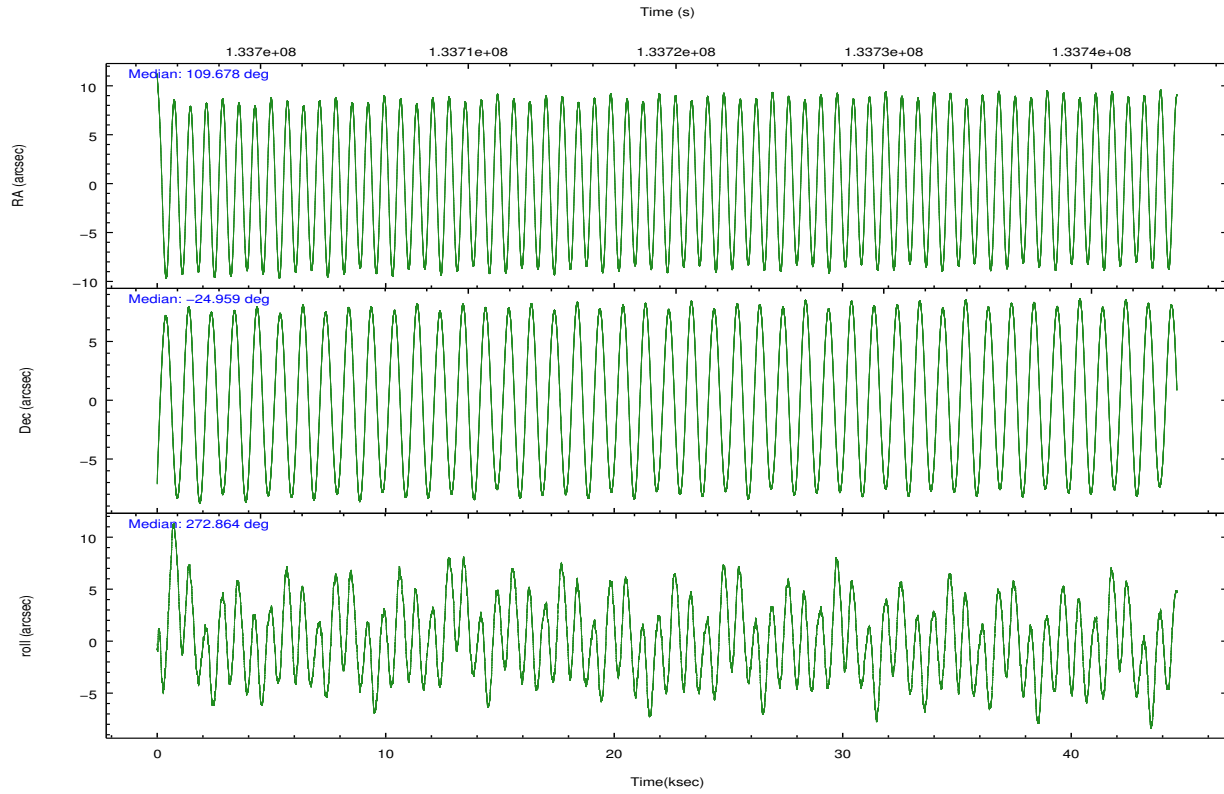
	ccd 4	ccd 5	ccd 6	ccd 7	ccd 8	ccd 9		ccd 4	ccd 5	ccd 6	ccd 7	ccd 8	ccd 9
level 1 events	301513	399841	276708	355260	341732	277927	grade 0 events	12920	21901	12627	13259	21473	12904
rejected events	268667	215813	245069	208225	272584	245680		4%	5%	4%	3%	6%	4%
rejected %	89%	53%	88%	58%	79%	88%	grade 1 events	139	4362	125	316	194	108
								0%	1%	0%	0%	0%	0%
							grade 2 events	7969	56341	6411	29305	15136	6593
								2%	14%	2%	8%	4%	2%
							grade 3 events	3043	7157	3157	13383	7332	3269
								1%	1%	1%	3%	2%	1%
							grade 4 events	2956	6786	3093	13306	6804	3059
								0%	1%	1%	3%	1%	1%
							grade 5 events	10144	29043	11932	34096	15057	11987
								3%	7%	4%	9%	4%	4%
							grade 6 events	5960	91857	6353	77794	18403	6425
								1%	22%	2%	21%	5%	2%
							grade 7 events	258382	182394	233010	173801	257333	233582
								85%	45%	84%	48%	75%	84%

2.2 Compared Parameters

Parameter	Planned	Actual	Parameter	Planned	Actual
Instrument	ACIS	ACIS	Obspar format version number	7	7
Detector	ACIS-456789	ACIS-456789	Obspar file type	PREDICTED	ACTUAL
Grating	HETG	HETG	Obspar update status	NONE	UPDATED
Data mode	FAINT	FAINT	Number of optional ACIS chips dropped	0	0
Observation mode	POINTING	POINTING	On-chip summing requested	N	N
[deg] Pointing RA	109.661190	109.6778074281985	Subarray requested	NONE	NONE
[deg] Pointing Dec	-24.936895	-24.9595863024939	Alternating exposures requested	N	N
[deg] Pointing Roll	272.704565	272.8681989579209	[s] Primary exposure time	0.000000	3.2
[mm] SIM focus pos	-0.684267	-0.6828225247311905			
[mm] SIM defocus	0	0.001444936568705701			
[mm] SIM translation stage pos	-190.132523	-190.1400660498719			
[mm] SIM translation stage offset	0	0.00754346686406393			
[s] Observation start time (MET)	133698082.184000	133696798.21319			
Observation start date	2002-03-28T10:20:18	2002-03-28T09:59:58			
[s] Observation end time (MET)	133741882.184000	133742843.26505			
Observation end date	2002-03-28T22:30:18	2002-03-28T22:47:23			
Read mode	TIMED	TIMED			

2.3 Aspect



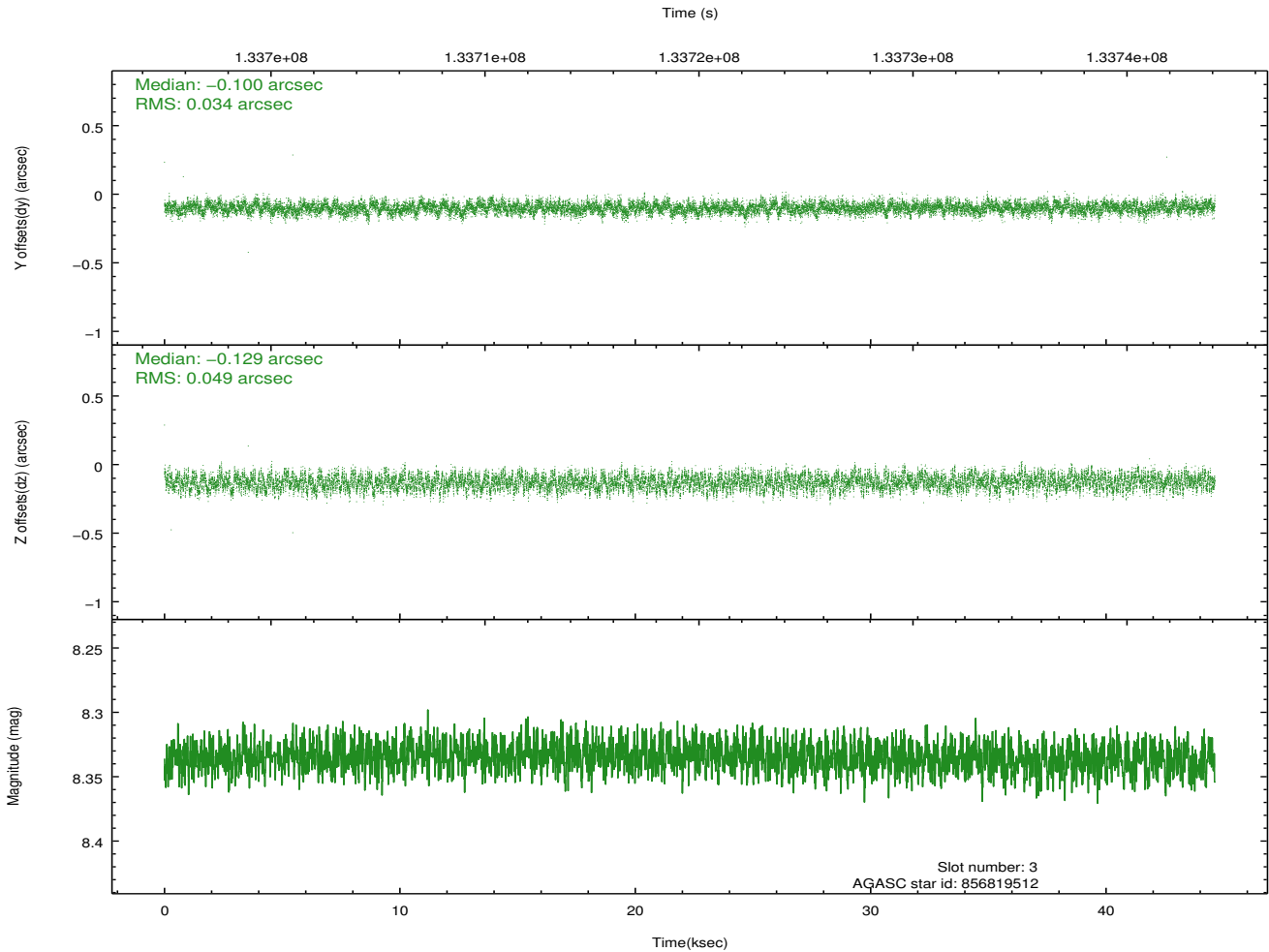
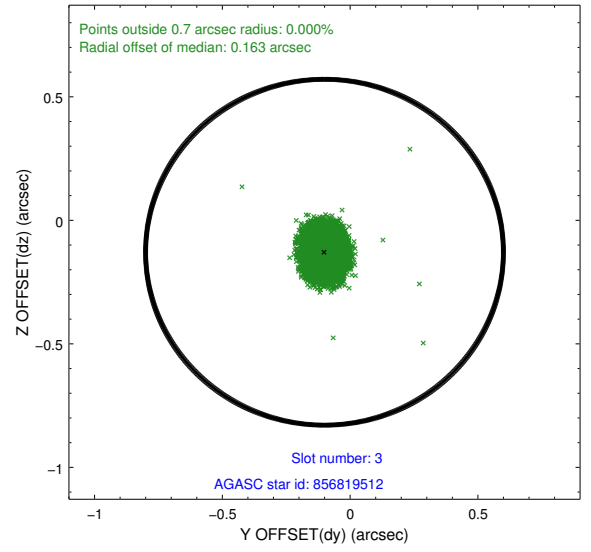
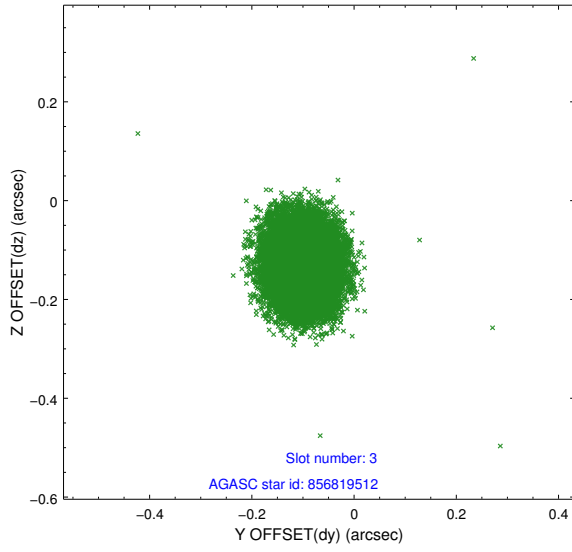


Slot Statistics

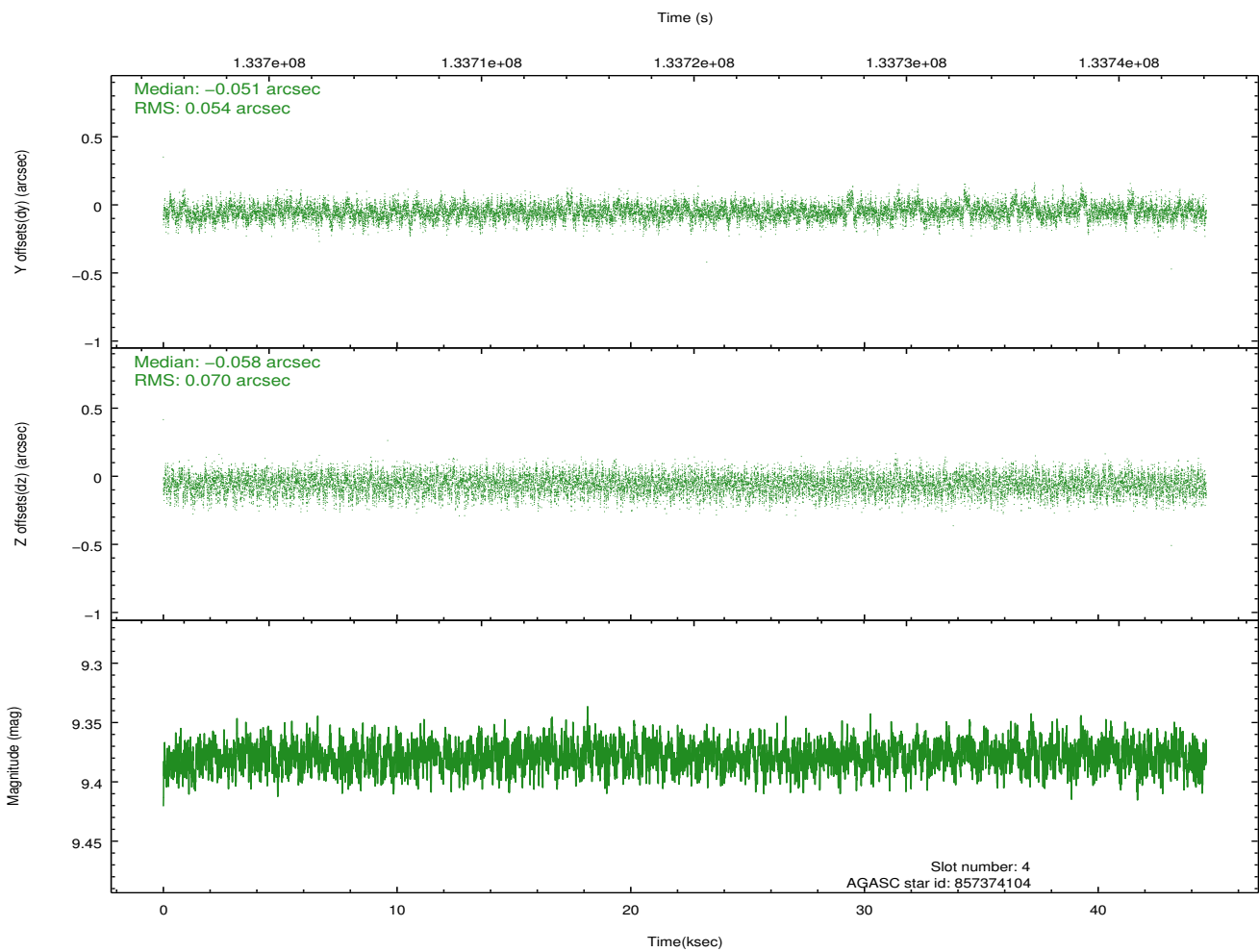
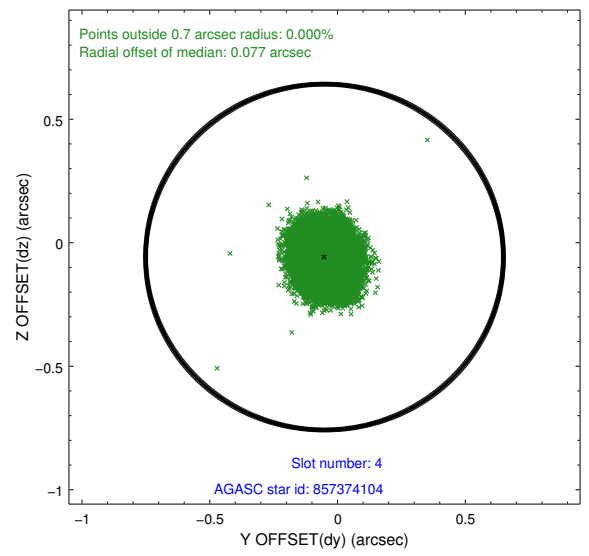
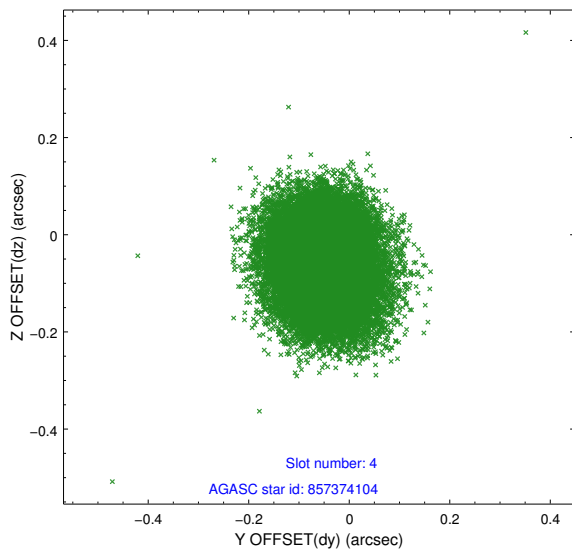
slot	status	id	mag	n_pts	med_dy	med_dz	dr1	dr2	ra	dec	mean_y	mean_z
0	FID	ACIS-S-2	7.12	10885	-0.007	0.002	0.007	0.012	0.000000	0.000000	-756.10	-1728.64
1	FID	ACIS-S-4	7.20	10883	-0.011	0.005	0.006	0.010	0.000000	0.000000	2157.18	179.85
2	FID	ACIS-S-6	7.36	10884	-0.010	0.000	0.007	0.012	0.000000	0.000000	405.88	817.23
3	GUIDE	856819512	8.33	21764	-0.100	-0.129	0.064	0.101	109.292794	-24.352083	-2158.01	-1107.44
4	GUIDE	857374104	9.38	21758	-0.051	-0.058	0.095	0.151	109.002221	-24.763139	-720.89	-2122.12
5	GUIDE	857351440	9.06	21762	-0.060	0.015	0.074	0.123	109.072756	-25.276289	1134.71	-1970.76
6	GUIDE	857371208	9.32	21761	-0.077	0.157	0.083	0.135	110.071536	-24.829278	-321.44	1357.95
7	GUIDE	857349496	9.65	21747	0.289	0.017	0.100	0.161	109.788555	-25.517382	2107.80	315.49

2.4 Star Slots

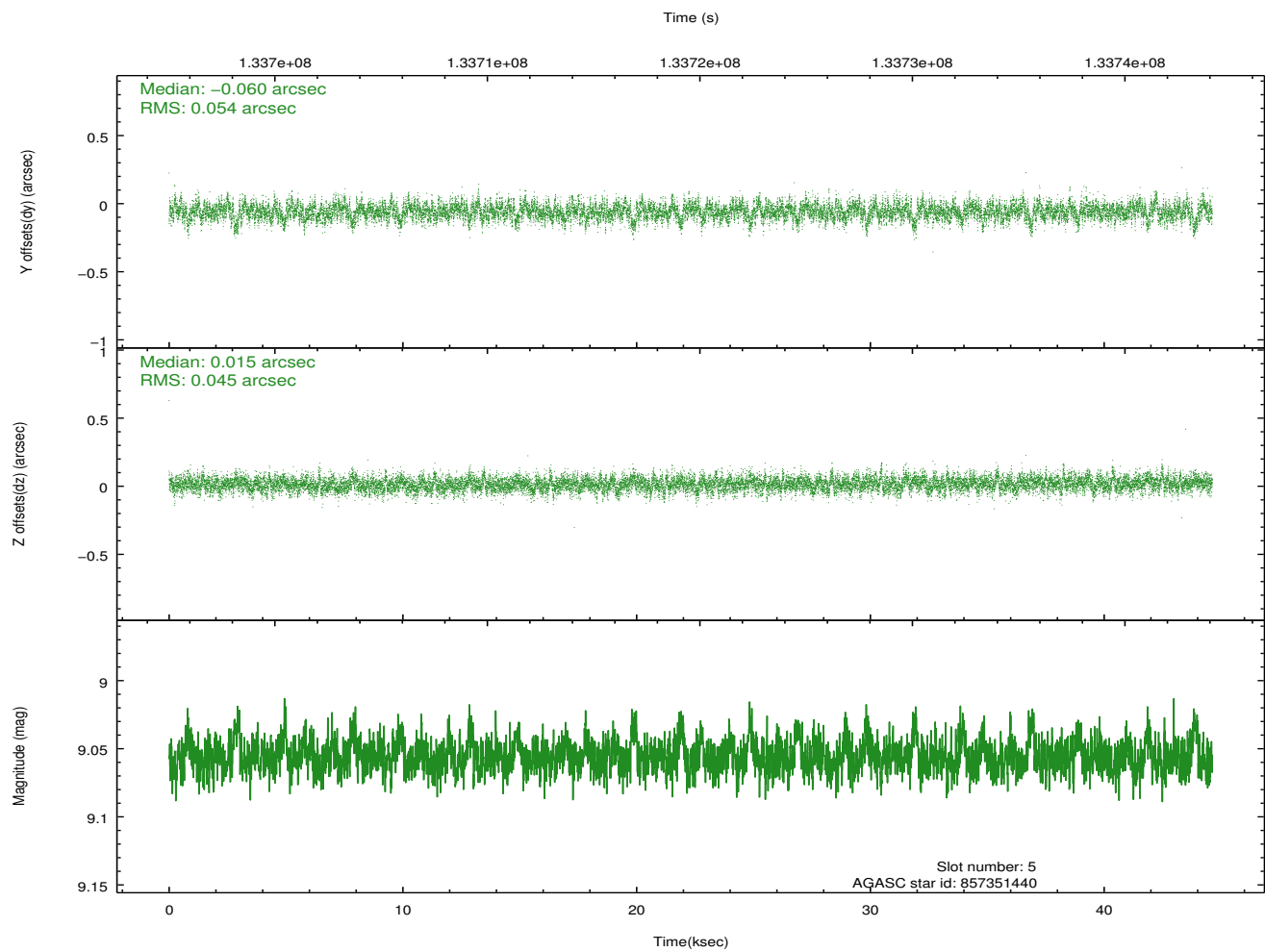
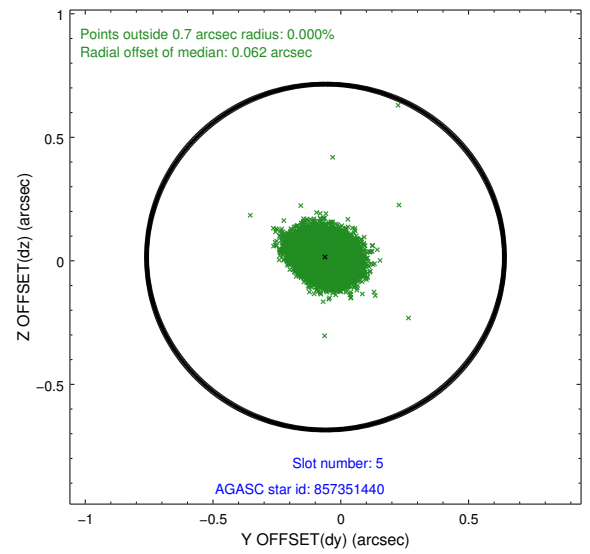
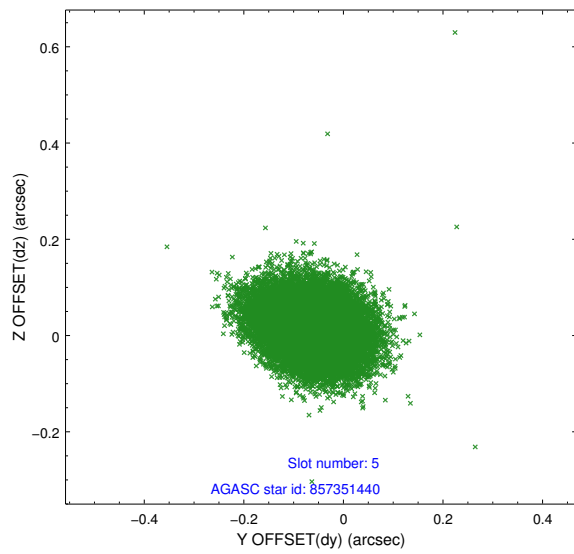
2.4.1 Slot 3



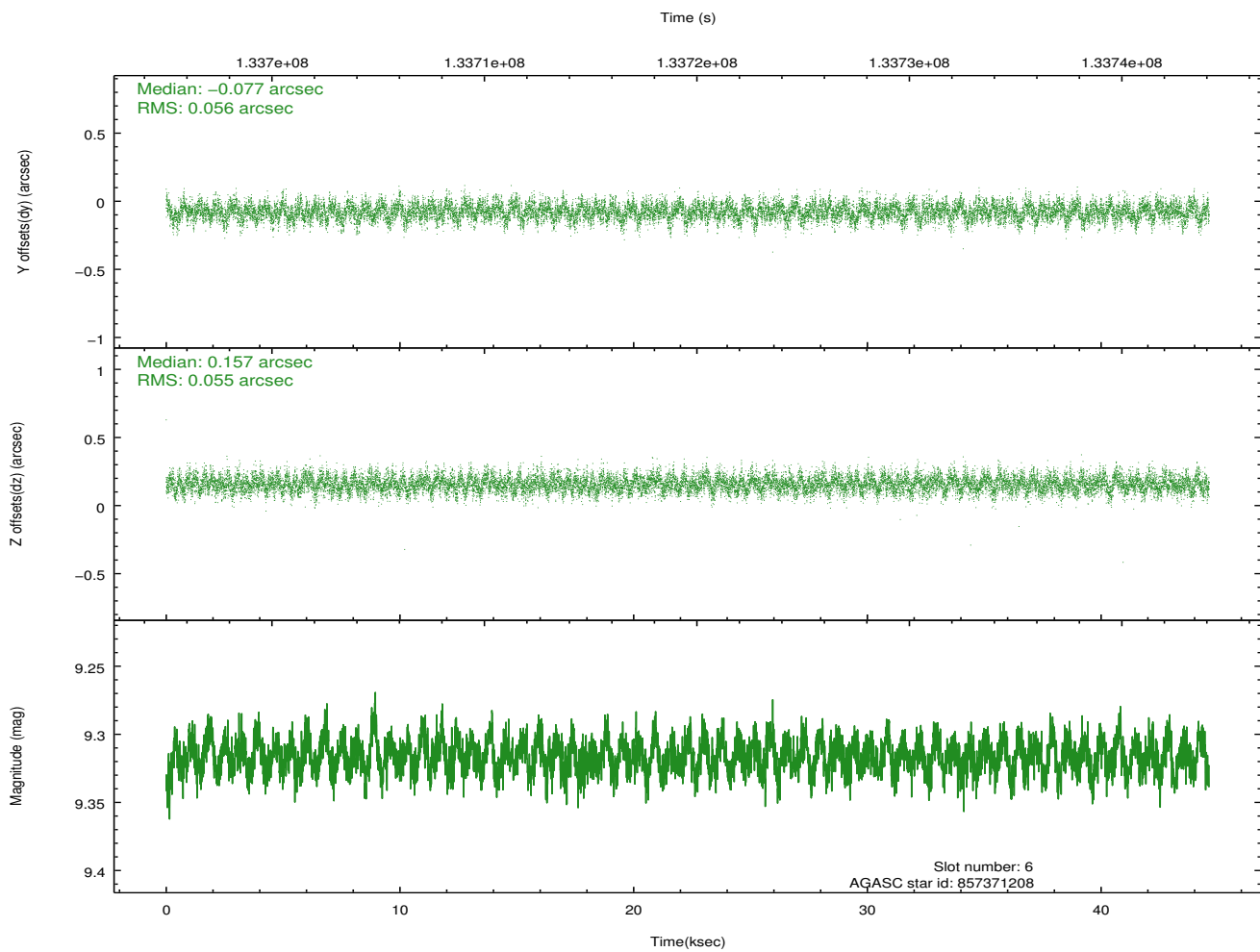
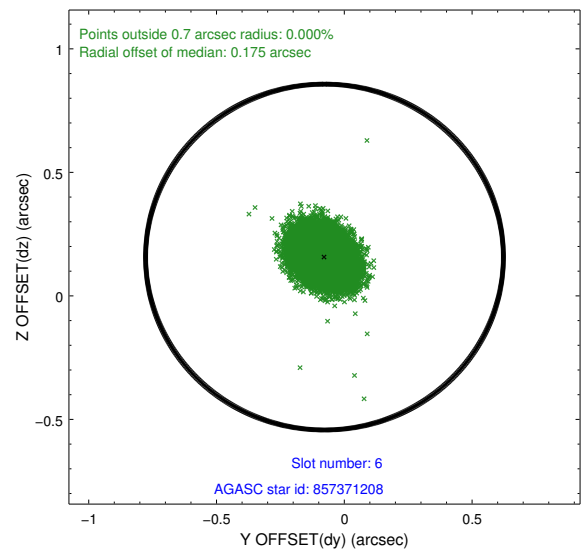
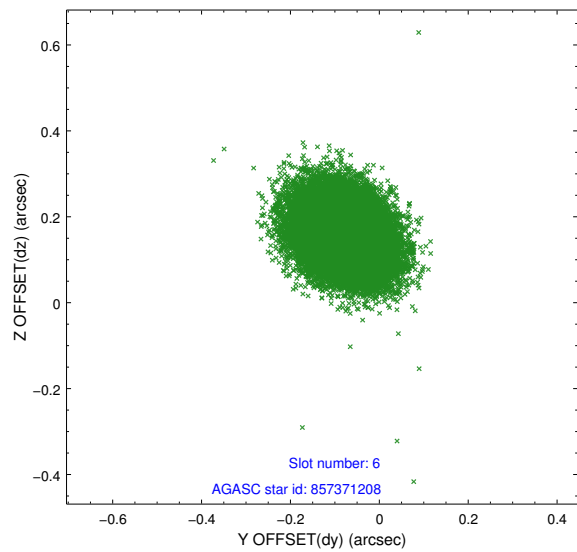
2.4.2 Slot 4



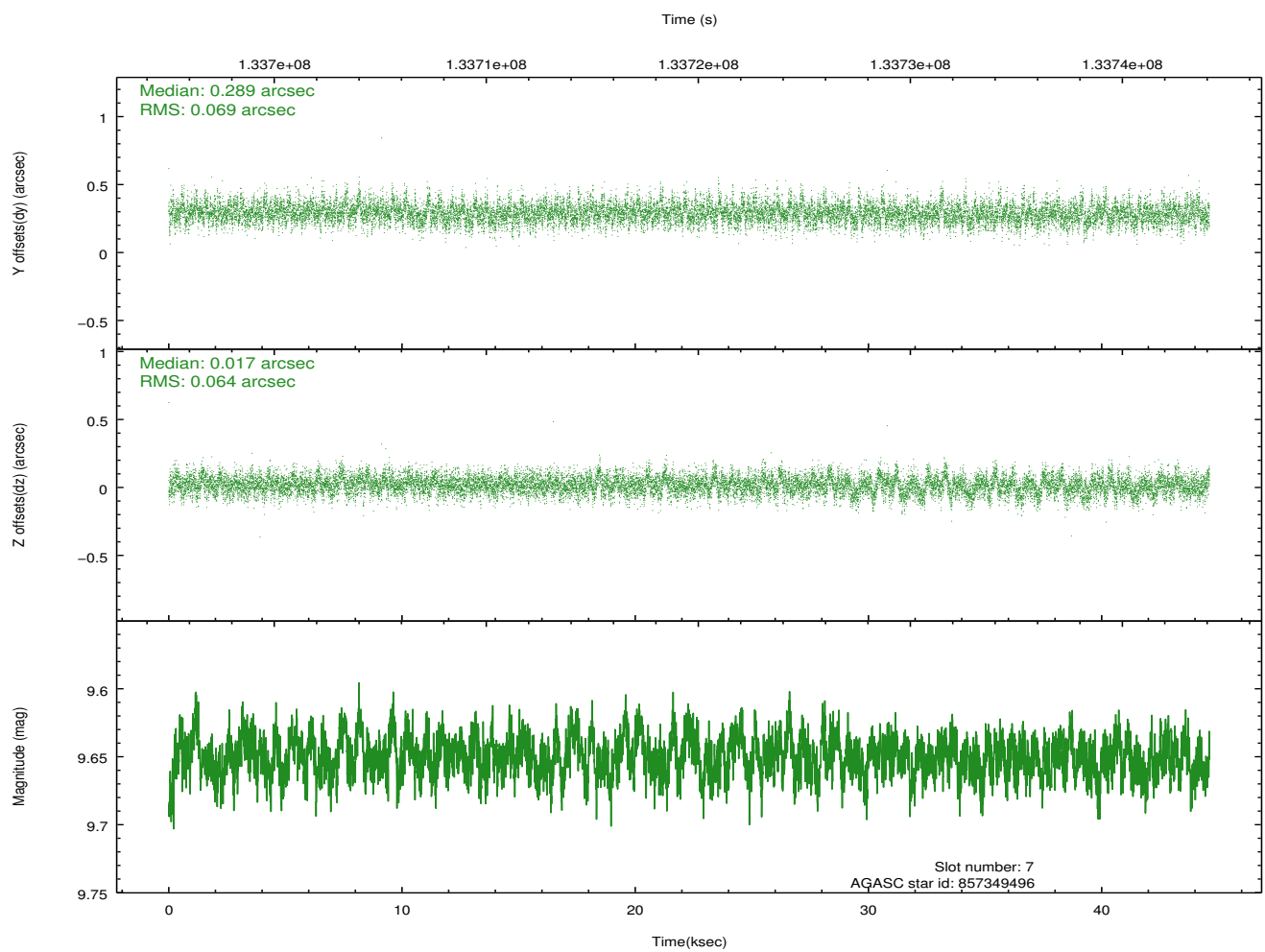
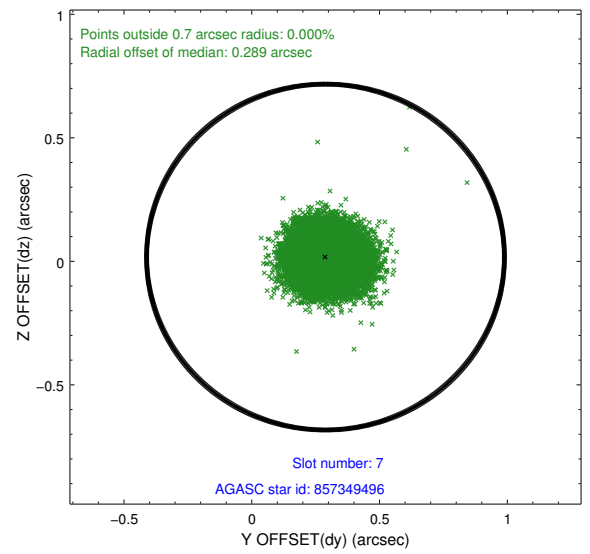
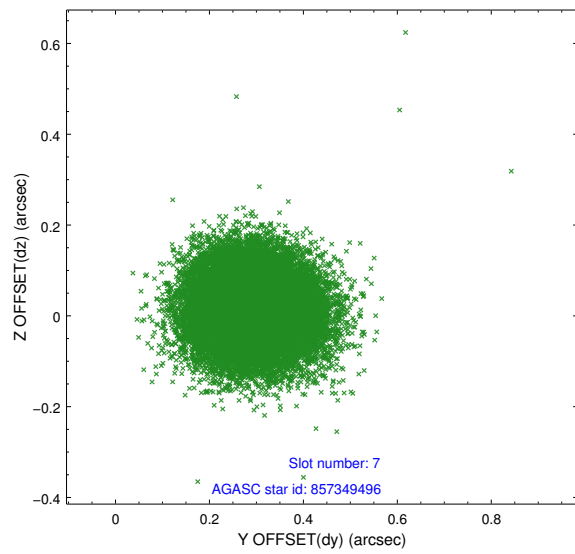
2.4.3 Slot 5



2.4.4 Slot 6

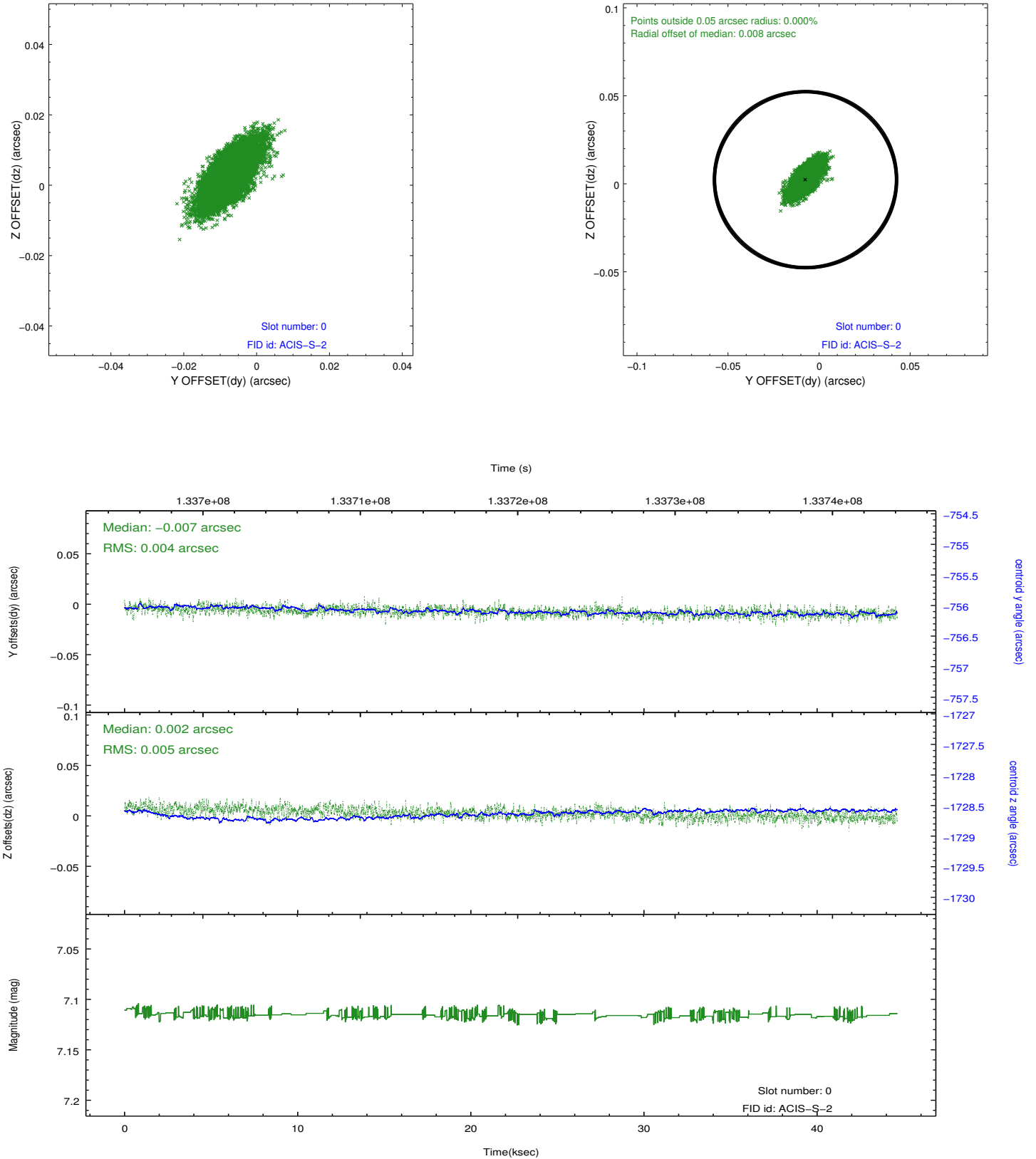


2.4.5 Slot 7

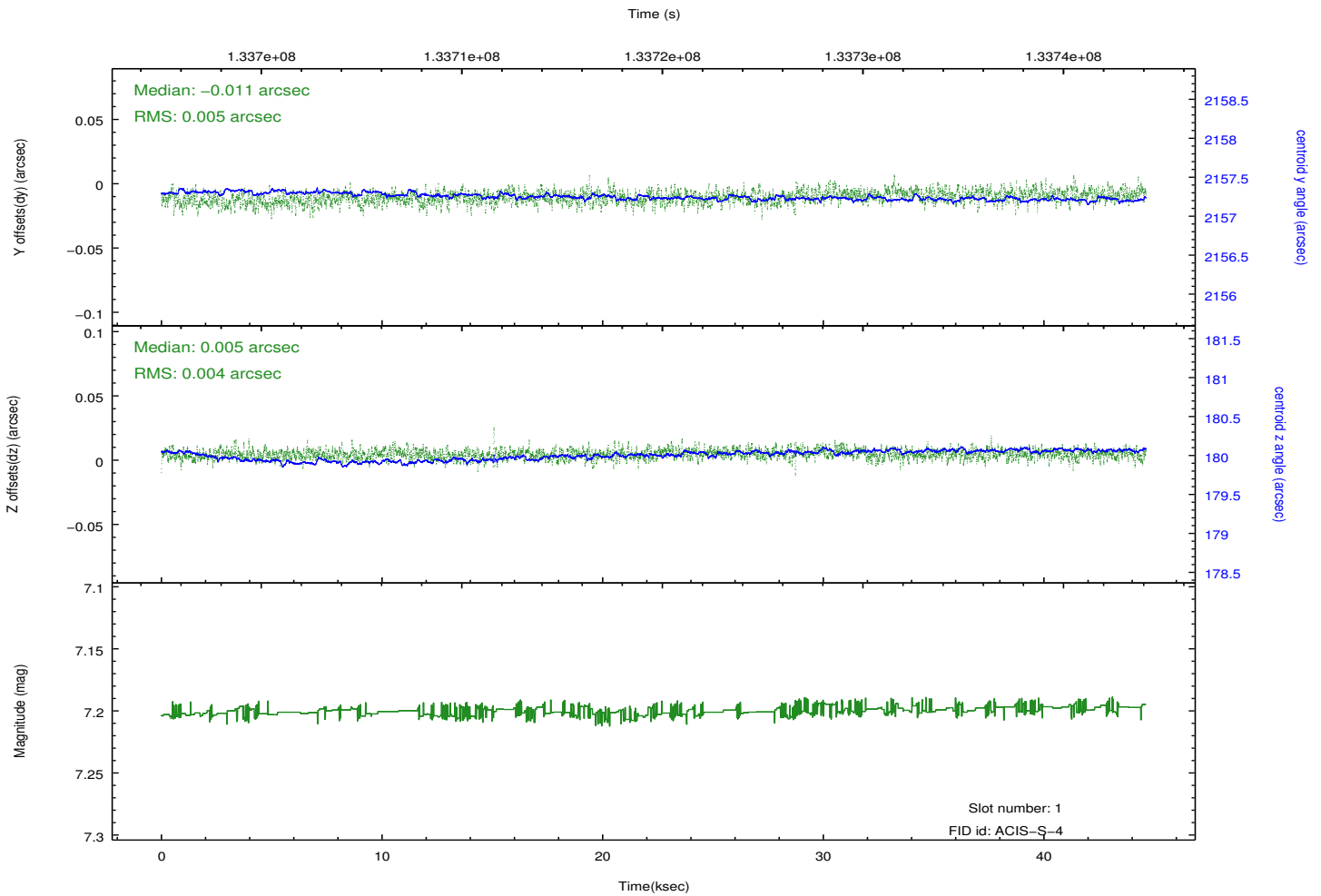
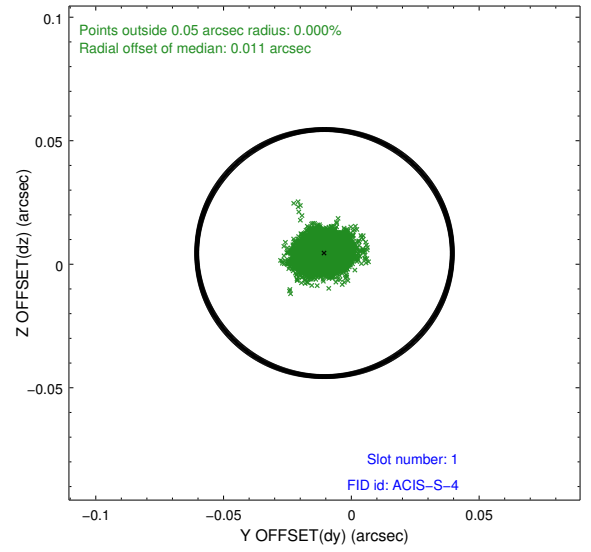
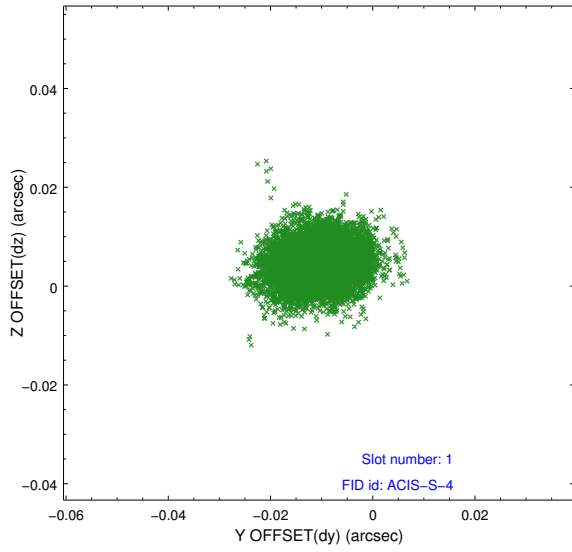


2.5 FID Slots

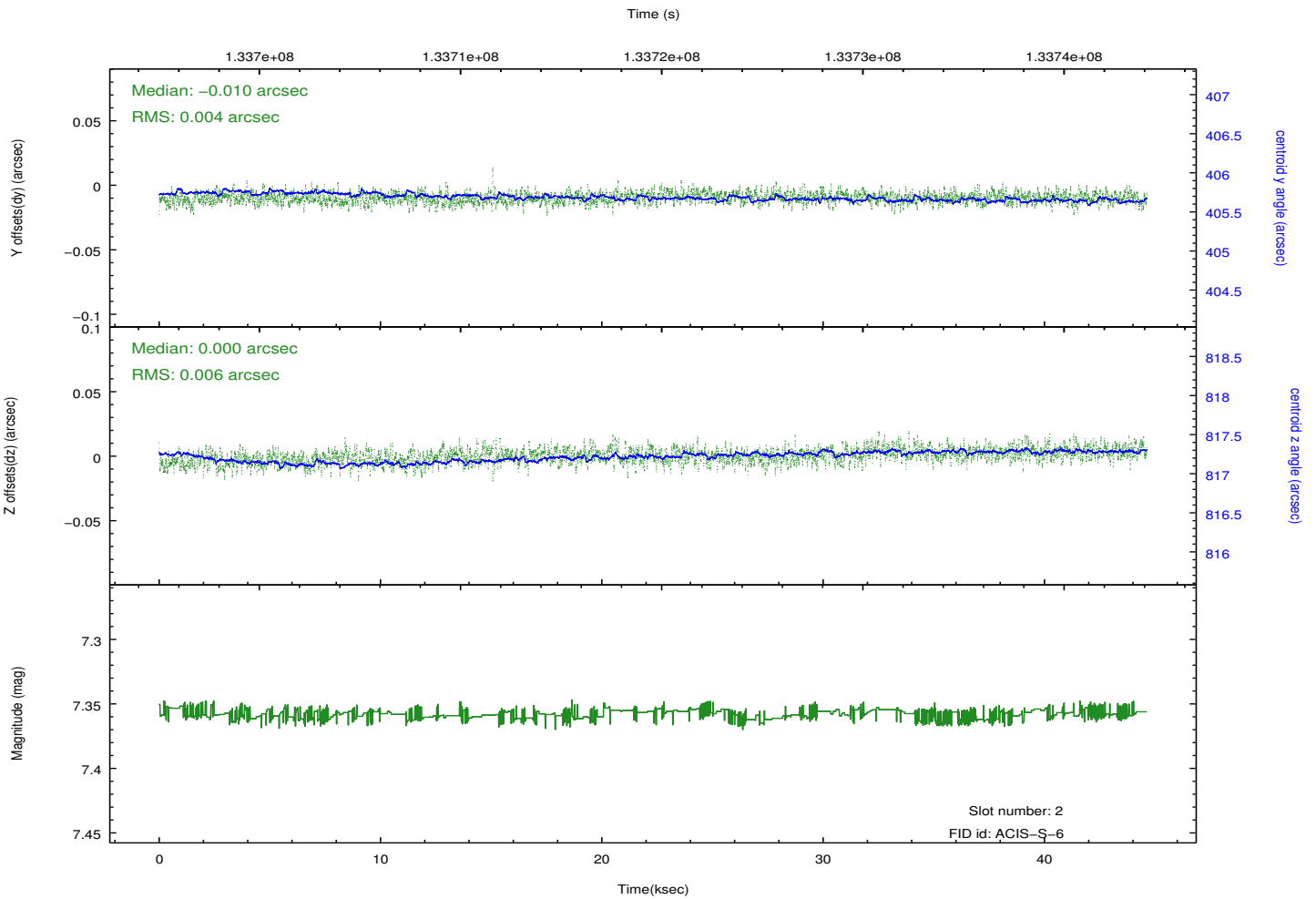
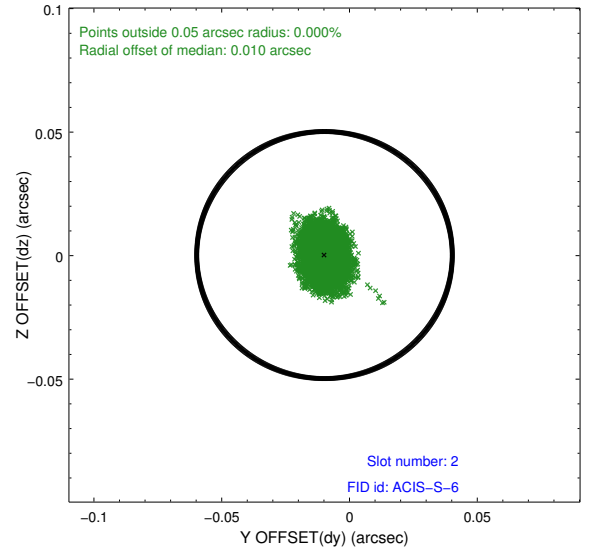
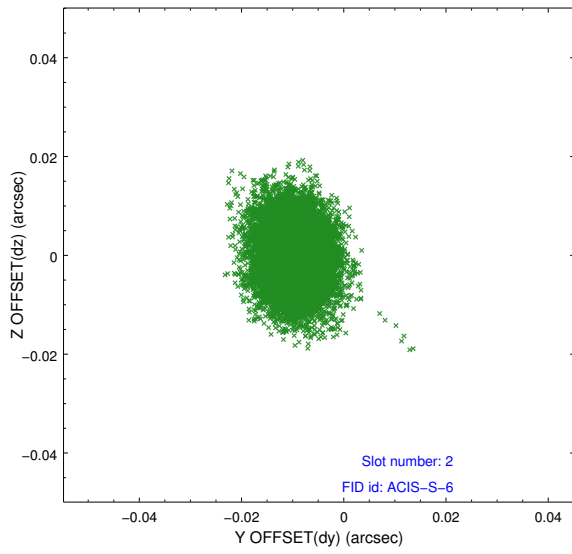
2.5.1 Slot 0



2.5.2 Slot 1

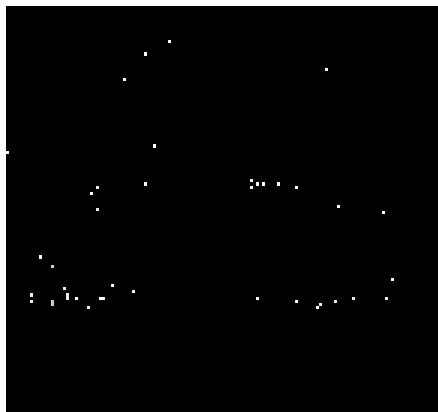


2.5.3 Slot 2

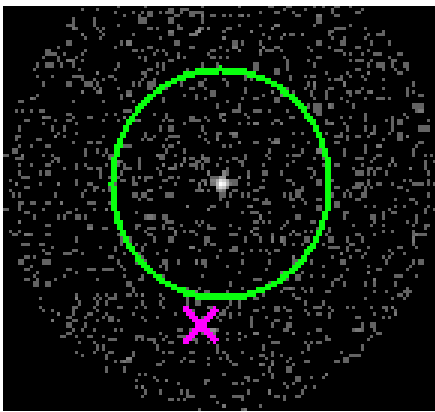


3 Gratings

3.1 HEG Arm



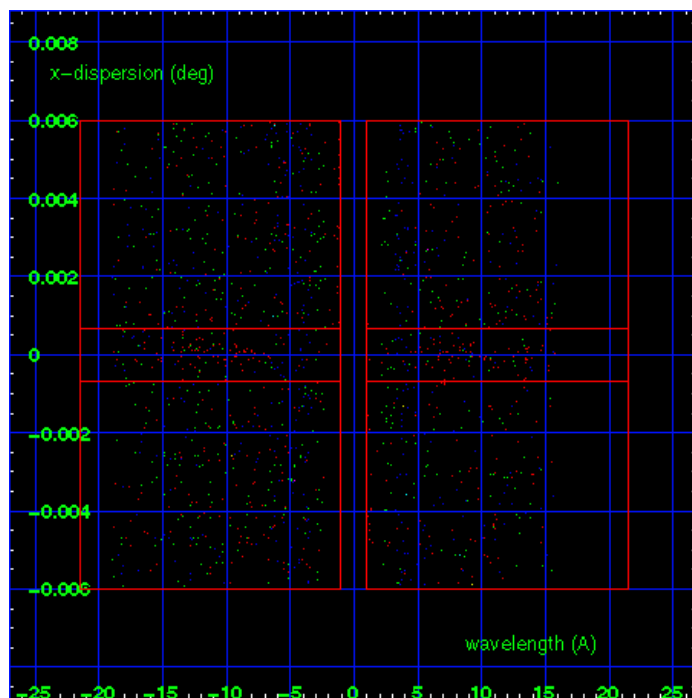
HEG Order Sort 123



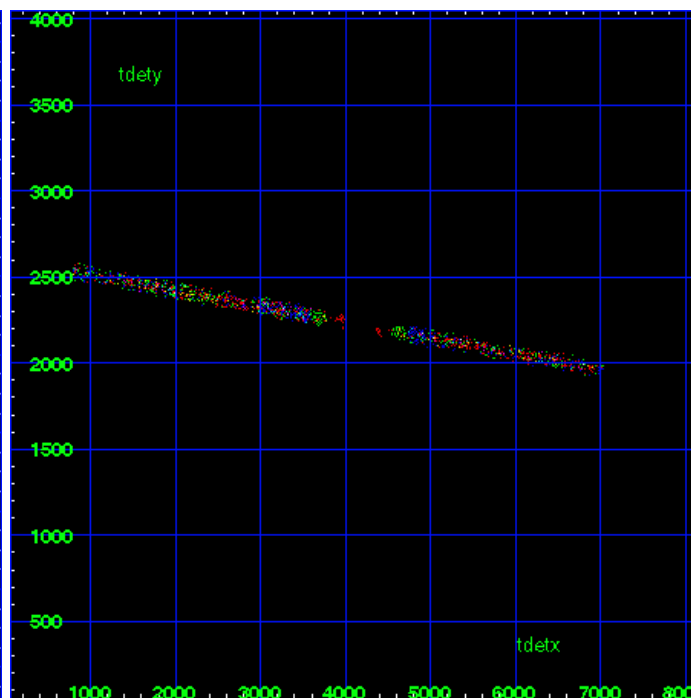
HEG Zero Order



HEG Order Sort ALL

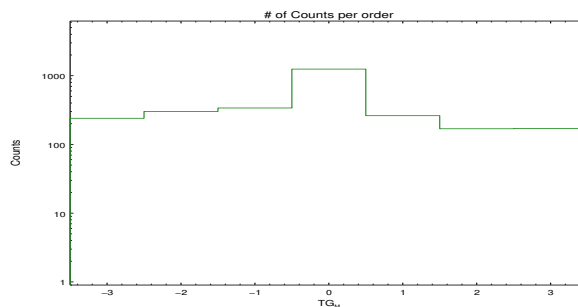


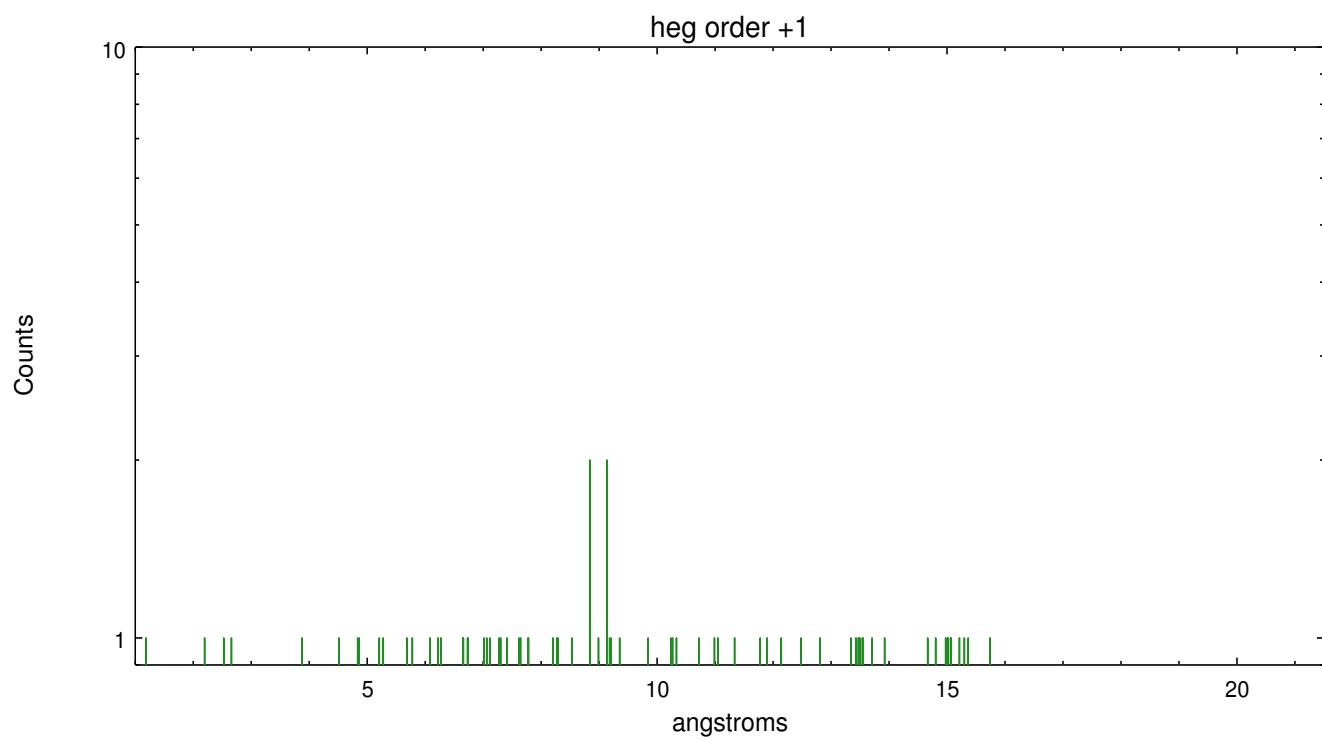
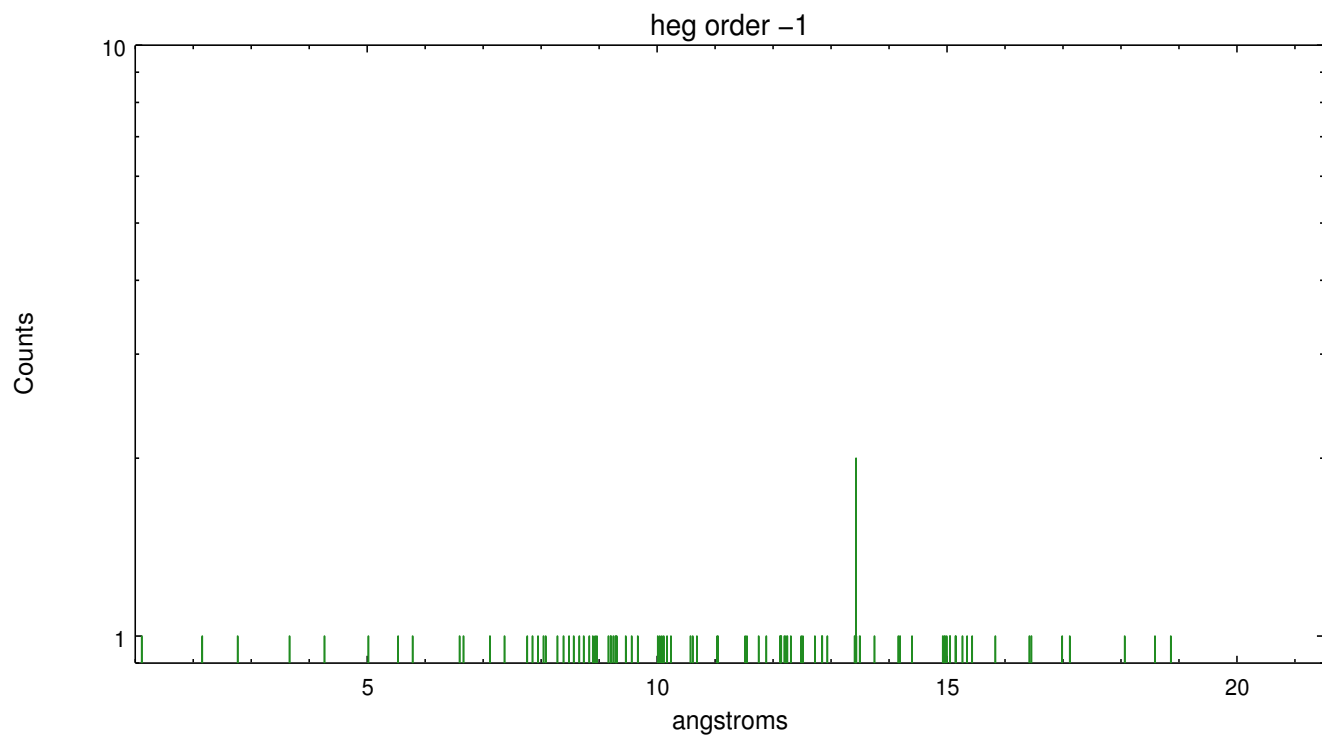
Spot Image HEG



Full Detector HEG

	order -3	order -2	order -1	order 0	order 1	order 2	order 3
Events	240	302	339	1247	262	169	170

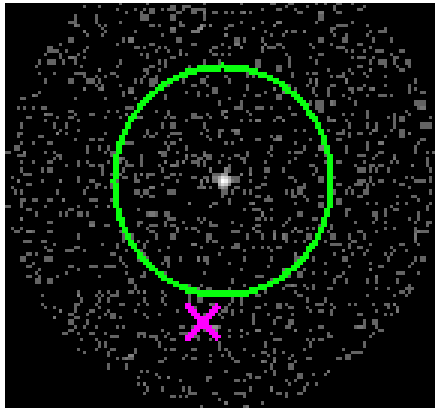




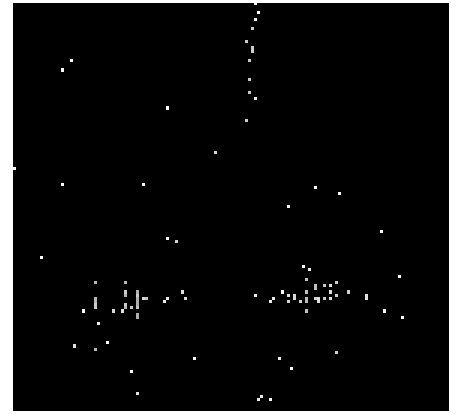
3.2 MEG Arm



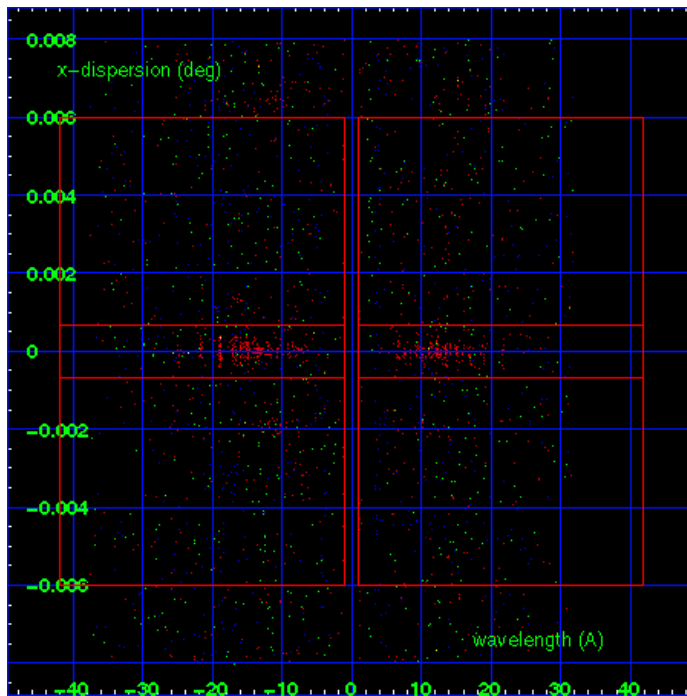
MEG Order Sort 123



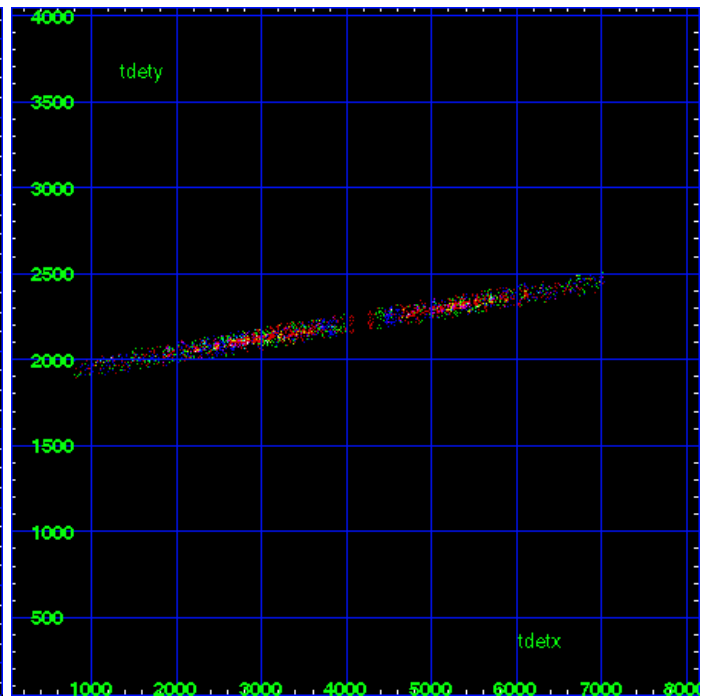
MEG Zero Order



MEG Order Sort ALL

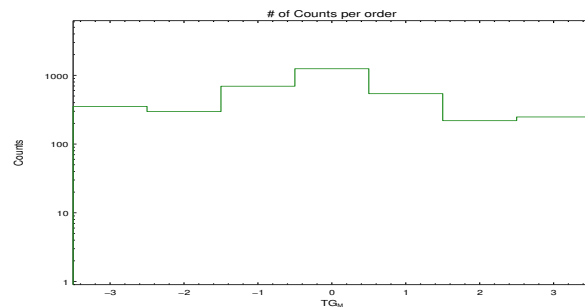


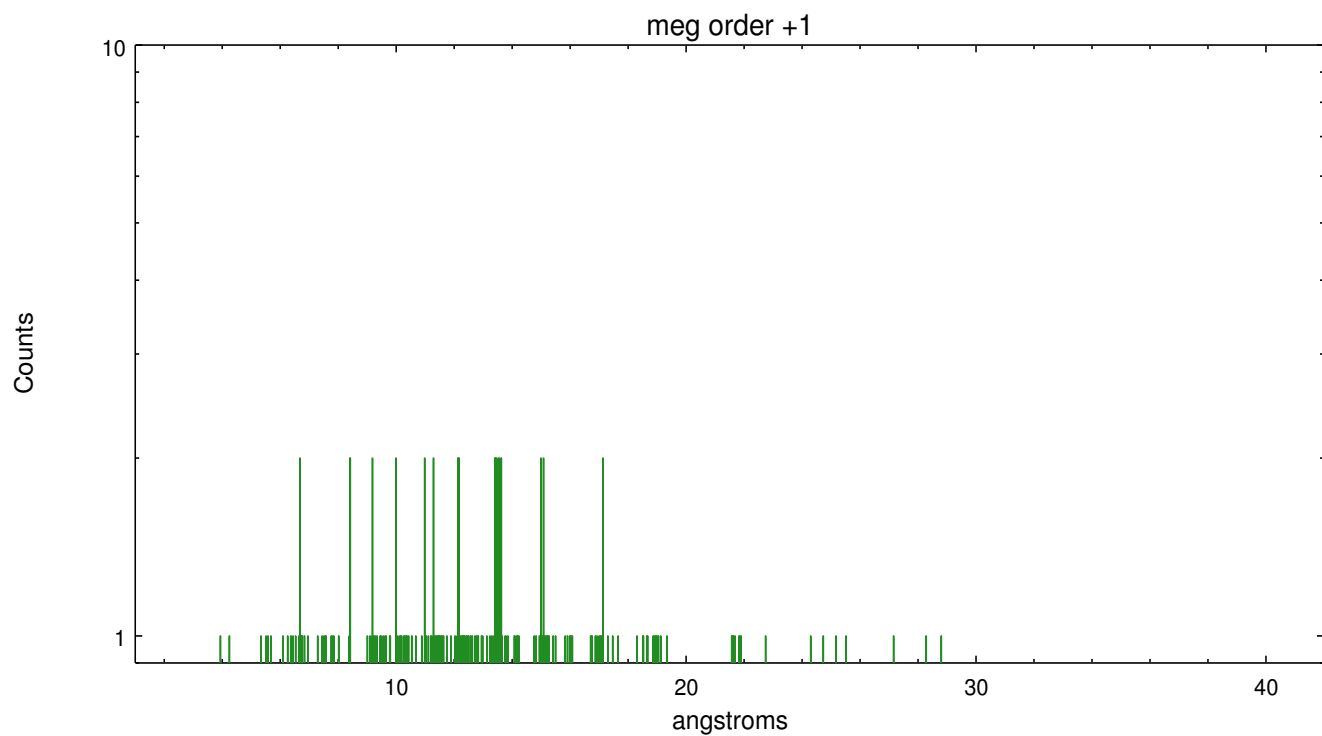
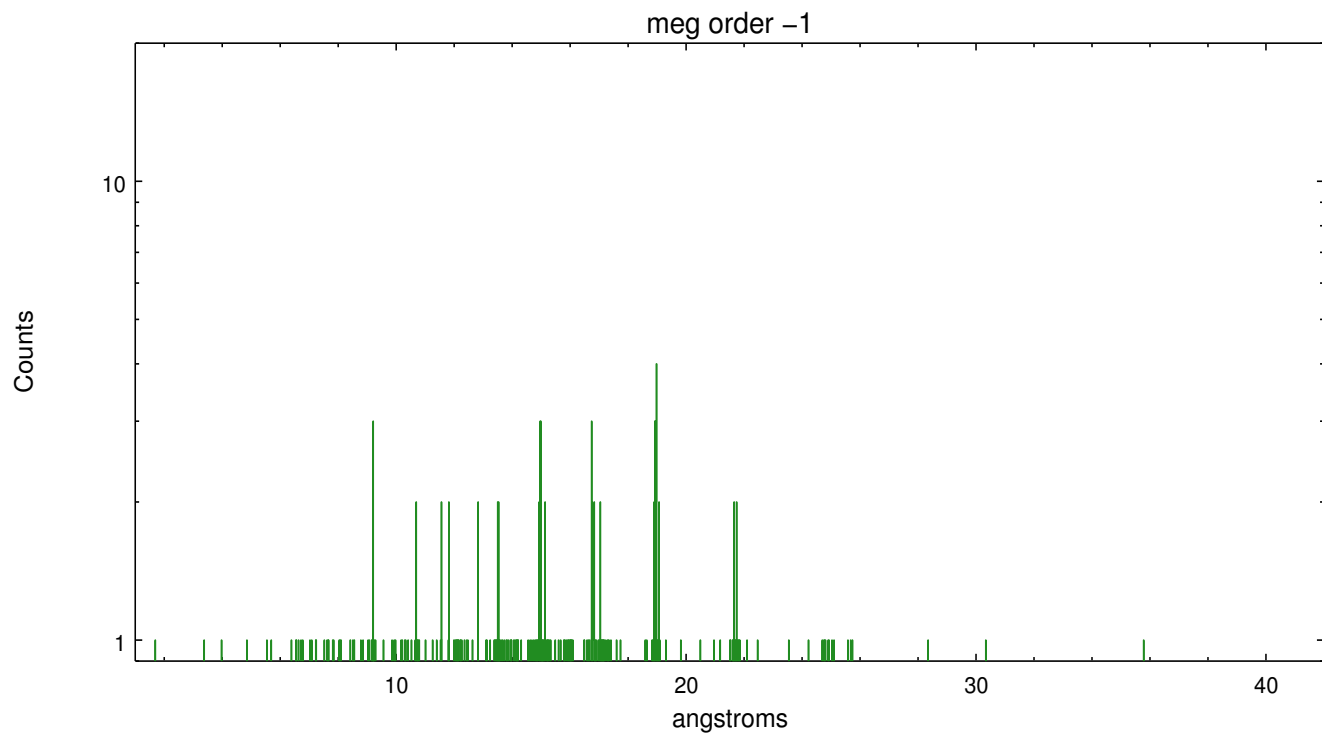
Spot Image MEG



Full Detector MEG

	order -3	order -2	order -1	order 0	order 1	order 2	order 3
Events	353	297	694	1247	541	219	248





A Summary

A.1 Status

V&V Scientist	Joy Nichols
V&V Date (YYYY-MM-DD)	2012.10.09
V&V Edition	1
V&V Disposition and Status	OK
V&V Charge Time	43.756

A.2 Comments

Multiple sources; extraction is of tau CMa. X-ray source about 30 arcsec SSE of target, seen in obsid 2526, is very faint in this obsid (flare?). Many other examples of flux variability in the zeroth orders in the field. Multiple sources in the field may cause contamination of the primary extraction at some wavelengths. Additional sources in the field (zeroth order only).