

V&V Reference Report

L2 ASCDS Version : 8.4.5

Observation 2552 - L2 Version 3
Chandra X-Ray Center

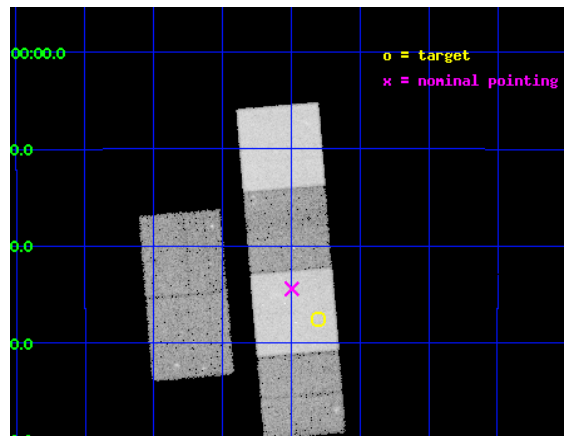
L2 Processing Date : Oct 7 2012

Contents

1	Front	2
2	OBI	3
2.1	OBI	3
2.1.1	Images	3
2.1.2	Bias	3
2.1.3	Parameters	4
2.1.4	Events	4
2.2	Compared Parameters	5
2.3	Aspect	6
2.4	Star Slots	9
2.4.1	Slot 3	9
2.4.2	Slot 4	10
2.4.3	Slot 5	11
2.4.4	Slot 6	12
2.4.5	Slot 7	13
2.5	FID Slots	14
2.5.1	Slot 0	14
2.5.2	Slot 1	15
2.5.3	Slot 2	16
A	Summary	17
A.1	Status	17
A.2	Comments	17

1 Front

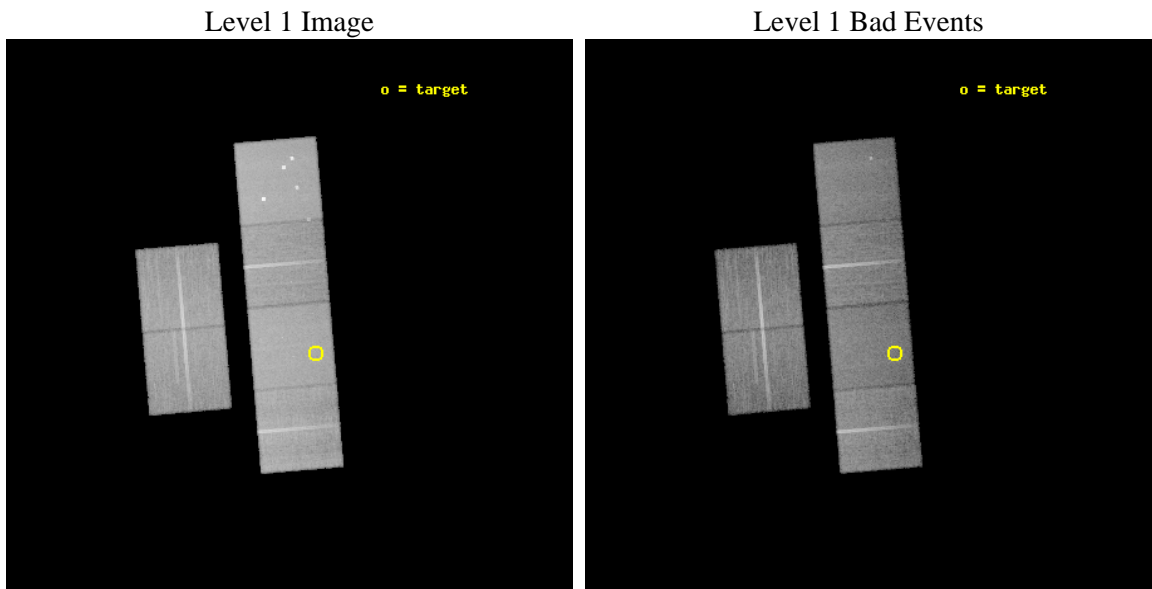
seq_num	200160	Sequence number
obs_id	2552	Observation id
title	STELLAR CORONAE AT THE BOTTOM OF THE MAIN SEQUENCE: A MULTI-WAVELENGTH STUDY	Proposal title
observer	Prof. Robert Rutledge	Principal investigator
object	2MASSW1507-16	Source name
dtcycle	0	
cycle	P	events from which exps? Prim/Second/Both
ra_targ	226.95	Observer's specified target RA [deg]
dec_targ	-16.460556	Observer's specified target Dec [deg]
ra_nom	226.99897926796	Nominal RA [deg]
dec_nom	-16.407569537256	Nominal Dec [deg]
roll_nom	85.170508500981	Nominal Roll [deg]
revision	3	Processing version of data
ontime	28057.599895477	Sum of GTIs [s]
livetime	27702.317671342	Livetime [s]
ontime2	28054.358925194	Sum of GTIs [s]
ontime3	28054.358945131	Sum of GTIs [s]
ontime5	28057.599895477	Sum of GTIs [s]
ontime6	28054.35904479	Sum of GTIs [s]
ontime7	28057.599895477	Sum of GTIs [s]
ontime8	28057.599895477	Sum of GTIs [s]
l2events	293035	Number of level 2 events



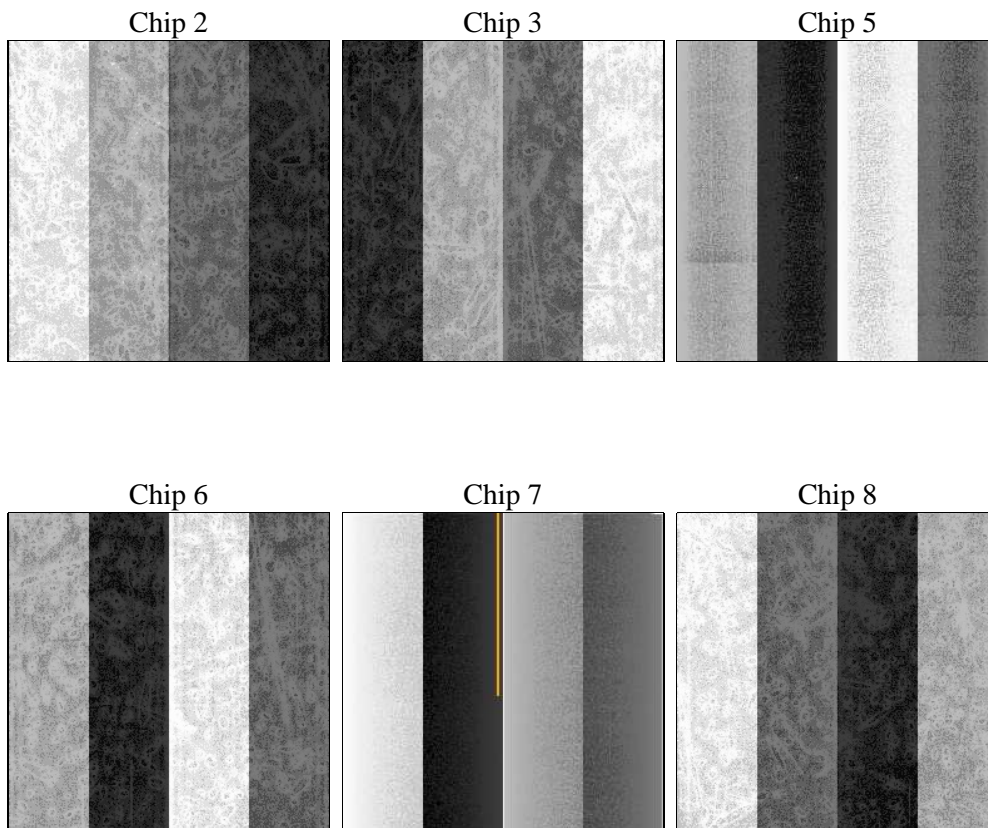
2 OBI

2.1 OBI

2.1.1 Images



2.1.2 Bias



2.1.3 Parameters

obi_num	0	Obi number	sched_exp_time	28000.000000	[s] Scheduled observation exposure time
ascdsver	8.4.5	Processing system revision	ontime	28057.599895477	Sum of GTIs [s]
caldbver	4.5.2	 	ontime2	28054.358925194	Sum of GTIs [s]
date	2012-10-07T09:21:48	Date and time of file creation	ontime3	28054.358945131	Sum of GTIs [s]
revision	3	Processing version of data	ontime5	28057.599895477	Sum of GTIs [s]
			ontime6	28054.35904479	Sum of GTIs [s]
			ontime7	28057.599895477	Sum of GTIs [s]
			ontime8	28057.599895477	Sum of GTIs [s]
			l1events	1314887	Number of level 1 events

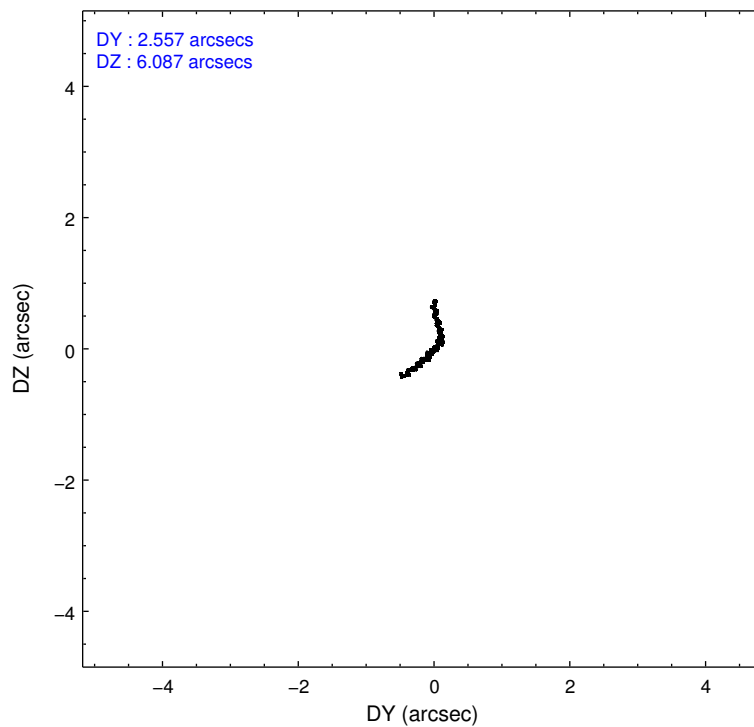
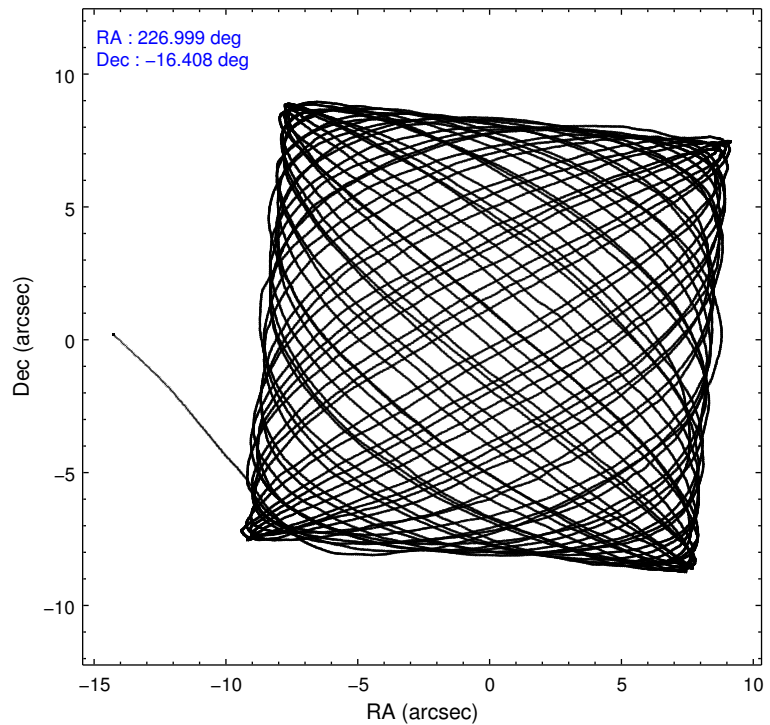
2.1.4 Events

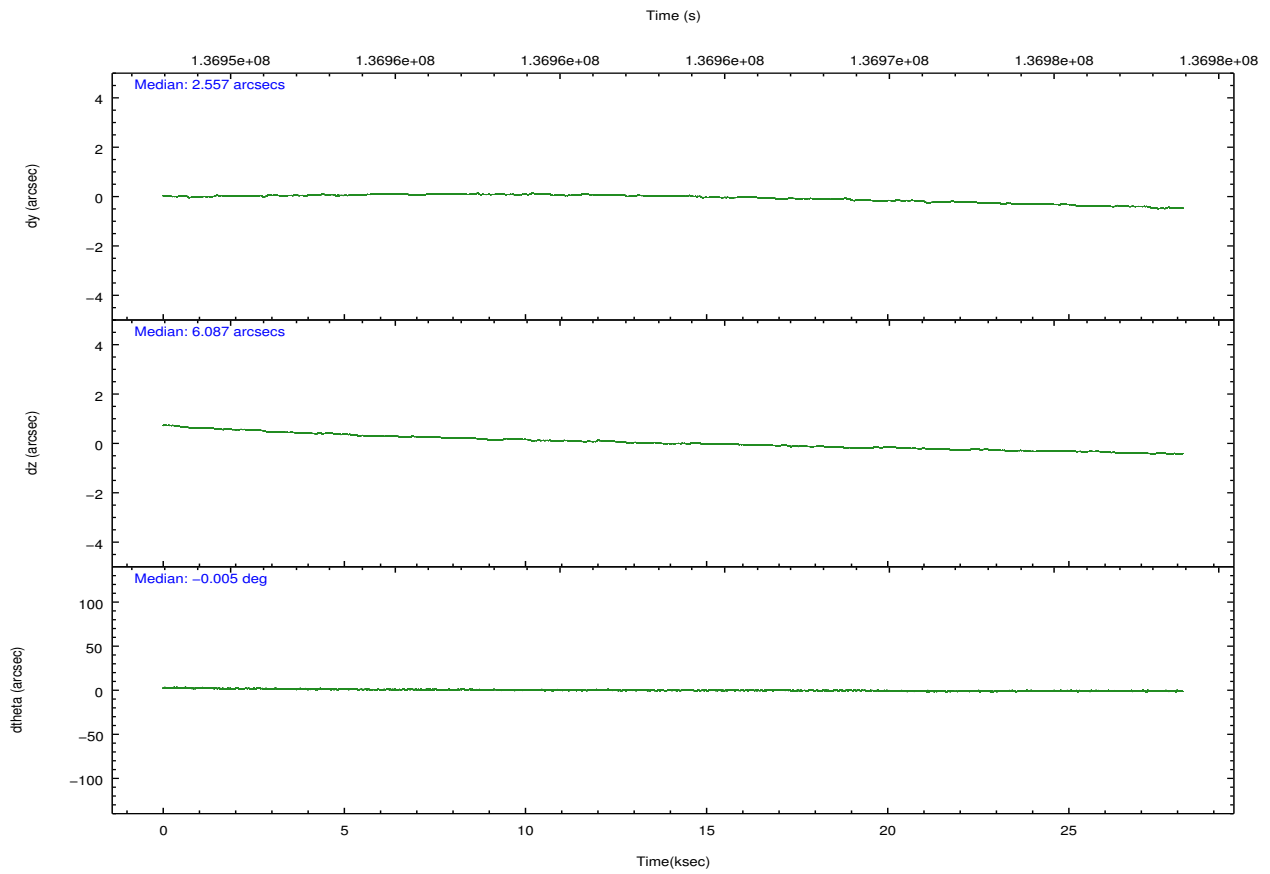
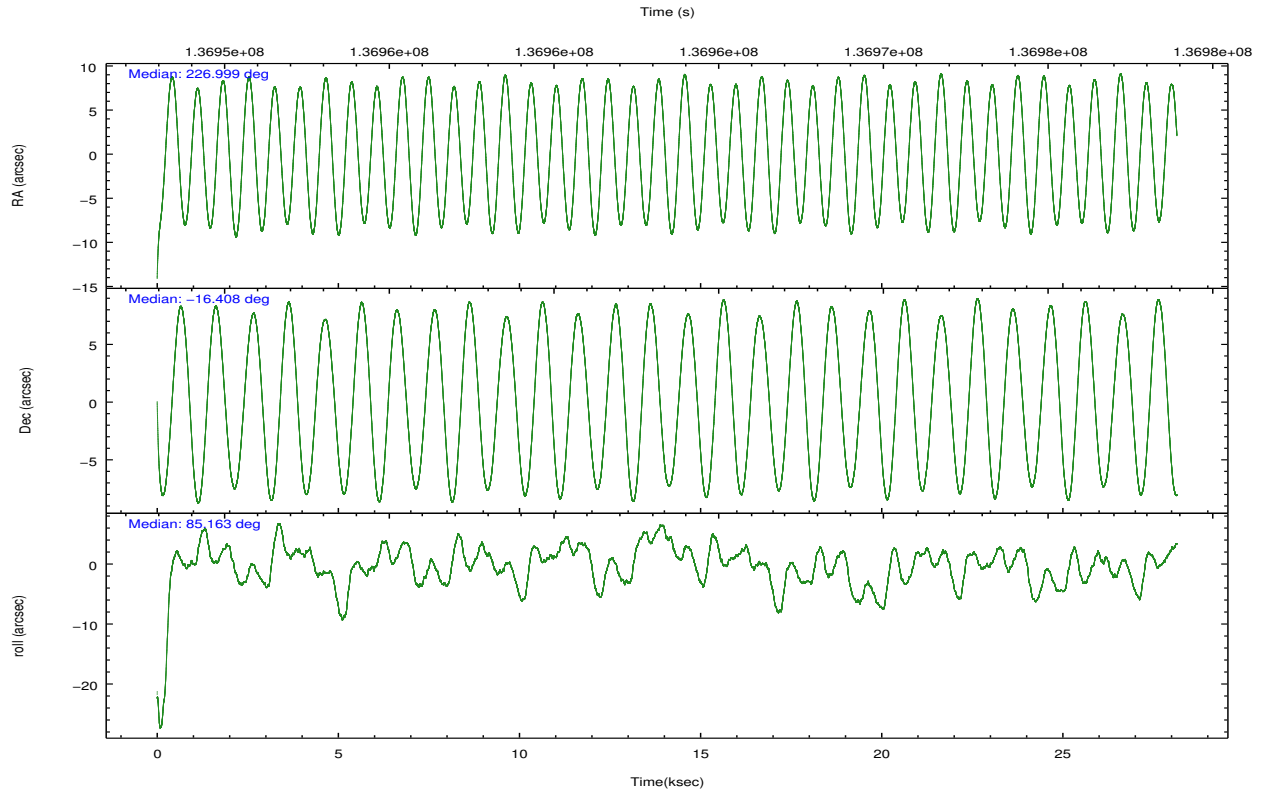
	ccd 2	ccd 3	ccd 5	ccd 6	ccd 7	ccd 8		ccd 2	ccd 3	ccd 5	ccd 6	ccd 7	ccd 8
level 1 events	193336	179925	279081	186652	244514	231379	grade 0 events	9254	9424	23413	9300	9946	15698
rejected events	171492	158316	145035	164255	142451	182476		4%	5%	8%	4%	4%	6%
rejected %	88%	87%	51%	88%	58%	78%	grade 1 events	98	72	350	83	202	144
								0%	0%	0%	0%	0%	0%
							grade 2 events	4818	4368	37234	4487	20329	10495
								2%	2%	13%	2%	8%	4%
							grade 3 events	2009	2054	5066	2147	9378	5507
								1%	1%	1%	1%	3%	2%
							grade 4 events	1940	2047	4830	2096	8980	4900
								1%	1%	1%	1%	3%	2%
							grade 5 events	6484	7308	19920	7902	23106	10139
								3%	4%	7%	4%	9%	4%
							grade 6 events	3829	3718	63532	4371	53456	12309
								1%	2%	22%	2%	21%	5%
							grade 7 events	164904	150934	124736	156266	119117	172187
								85%	83%	44%	83%	48%	74%

2.2 Compared Parameters

Parameter	Planned	Actual	Parameter	Planned	Actual
Instrument	ACIS	ACIS	Obspar format version number	7	7
Detector	ACIS-235678	ACIS-235678	Obspar file type	PREDICTED	ACTUAL
Grating	NONE	NONE	Obspar update status	NONE	UPDATED
Data mode	FAINT	FAINT	Number of optional ACIS chips dropped	0	0
Observation mode	POINTING	POINTING	On-chip summing requested	N	N
[deg] Pointing RA	227.011385	226.9989792679634	Subarray requested	NONE	NONE
[deg] Pointing Dec	-16.432066	-16.40756953725626	Alternating exposures requested	N	N
[deg] Pointing Roll	85.017386	85.17050850098147	[s] Primary exposure time	0.000000	3.2
[s] Window start time (MET)	134265664.184000	134265664.184000			
[s] Window stop time (MET)	139536064.184000	139536064.184000			
[mm] SIM focus pos	-0.684267	-0.6828225247311905			
[mm] SIM defocus	0	0.001444936568705701			
[mm] SIM translation stage pos	-190.132523	-190.1425803651734			
[mm] SIM translation stage offset	0	0.01005778216563158			
[s] Observation start time (MET)	136949509.184000	136948498.60792			
Observation start date	2002-05-05T01:30:45	2002-05-05T01:14:58			
[s] Observation end time (MET)	136977509.184000	136978141.09663			
Observation end date	2002-05-05T09:17:25	2002-05-05T09:29:01			
Read mode	TIMED	TIMED			

2.3 Aspect



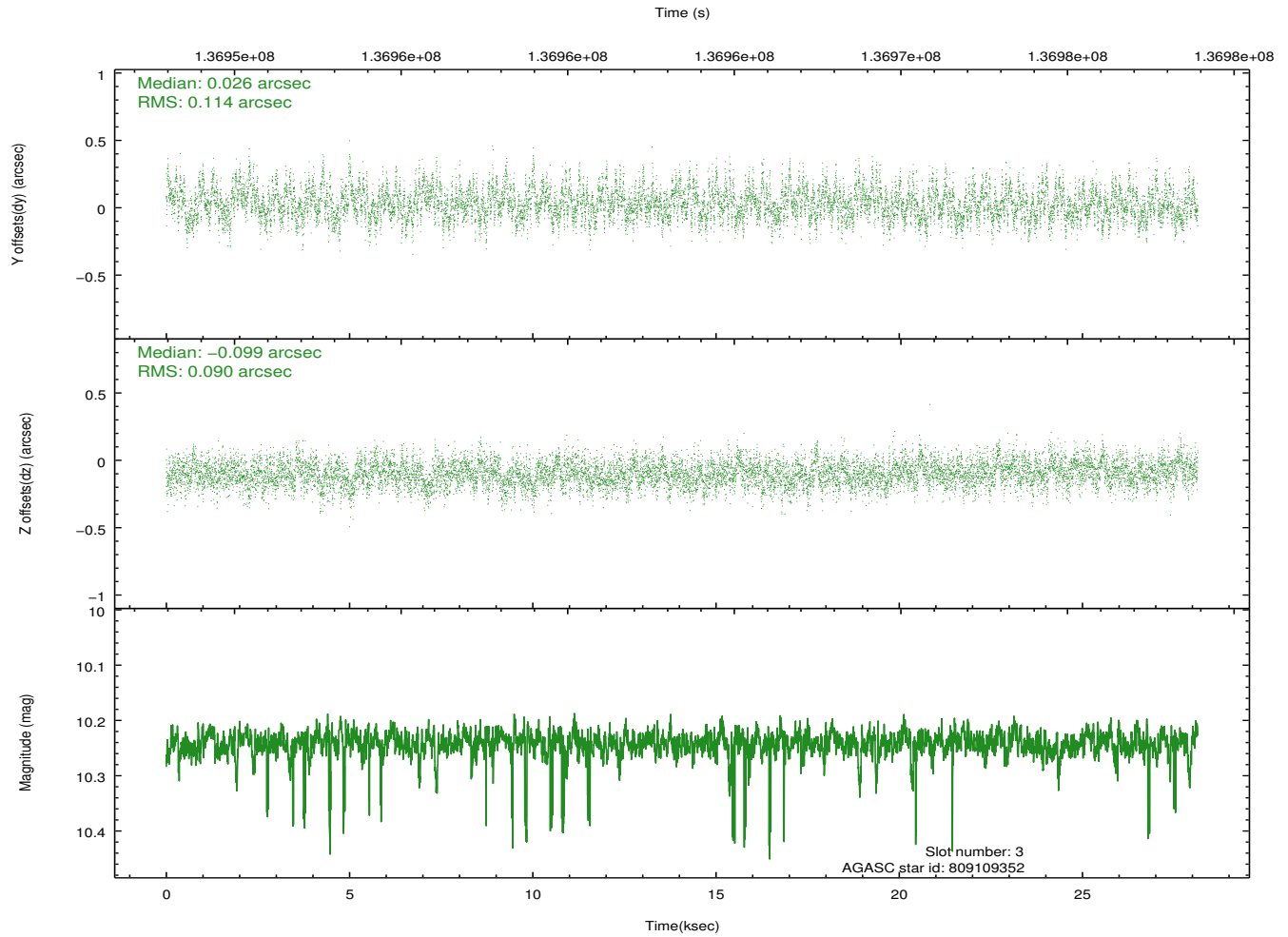
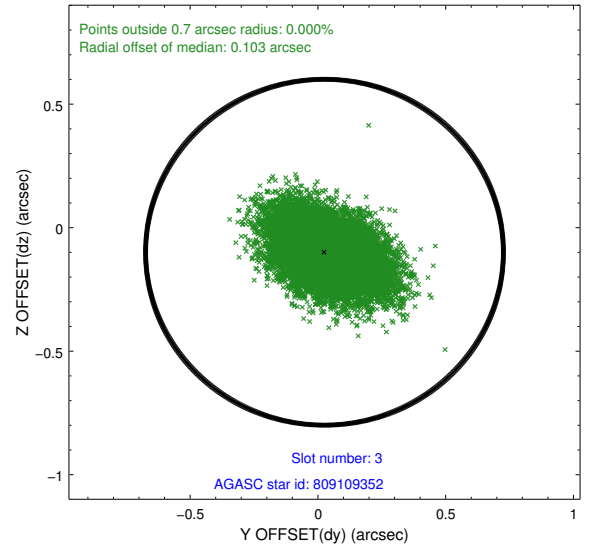
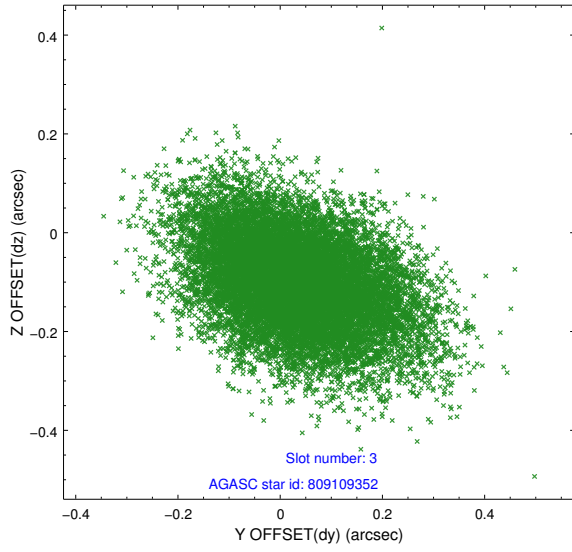


Slot Statistics

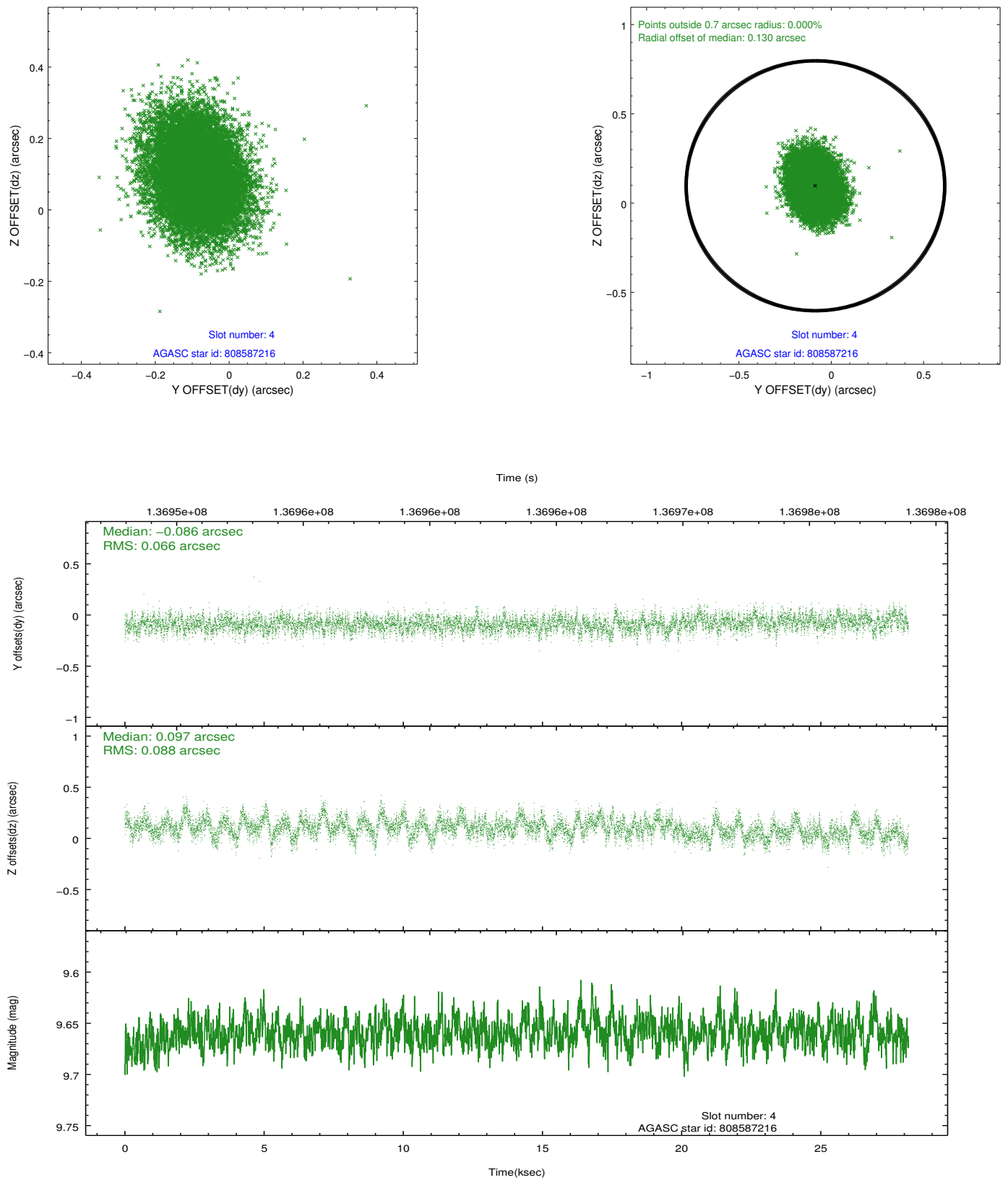
slot	status	id	mag	n_pts	med_dy	med_dz	dr1	dr2	ra	dec	mean_y	mean_z
0	FID	ACIS-S-2	7.11	6865	-0.038	0.010	0.014	0.024	0.000000	0.000000	-755.11	-1727.23
1	FID	ACIS-S-4	7.20	6863	-0.028	0.015	0.015	0.034	0.000000	0.000000	2158.10	181.24
2	FID	ACIS-S-5	7.24	6863	0.032	-0.016	0.009	0.016	0.000000	0.000000	-1807.81	174.89
3	GUIDE	809109352	10.24	13680	0.026	-0.099	0.152	0.257	226.344008	-16.984618	-2185.21	2115.22
4	GUIDE	808587216	9.66	13721	-0.086	0.097	0.117	0.192	227.577621	-16.256842	795.83	-1895.10
5	GUIDE	808589560	9.42	13722	-0.058	-0.008	0.112	0.183	226.678401	-16.142069	939.16	1237.33
6	GUIDE	808593688	6.80	13731	-0.022	0.009	0.076	0.123	226.704420	-16.484361	-280.36	1038.95
7	GUIDE	809117864	9.40	13730	0.125	-0.004	0.092	0.150	226.614361	-17.063476	-2384.41	1163.05

2.4 Star Slots

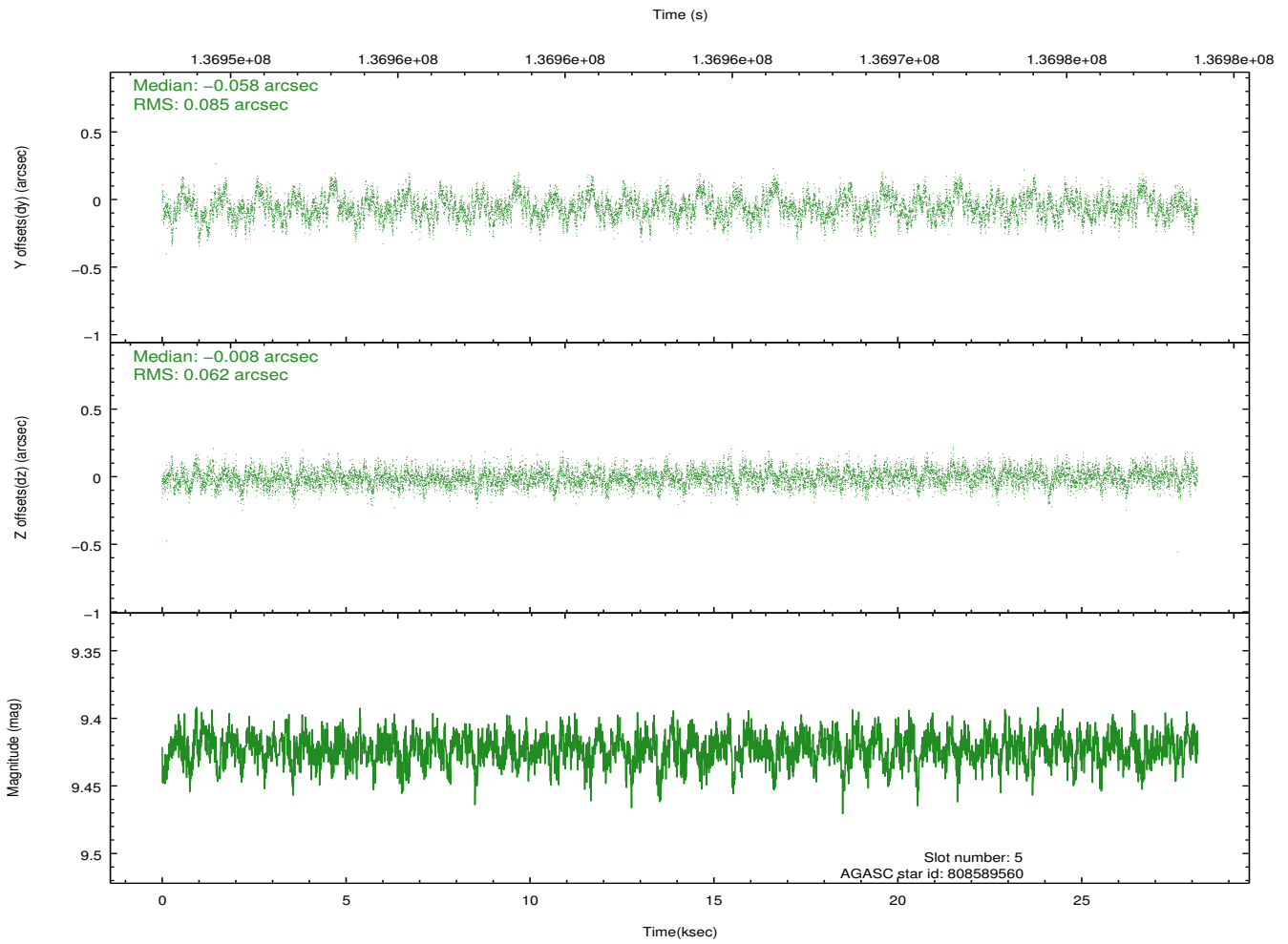
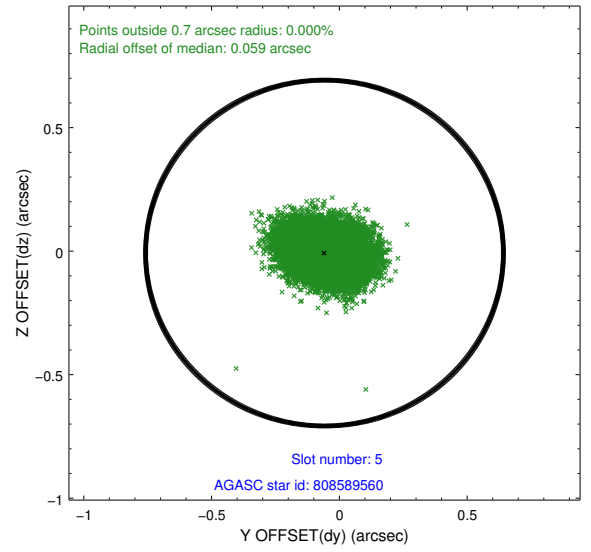
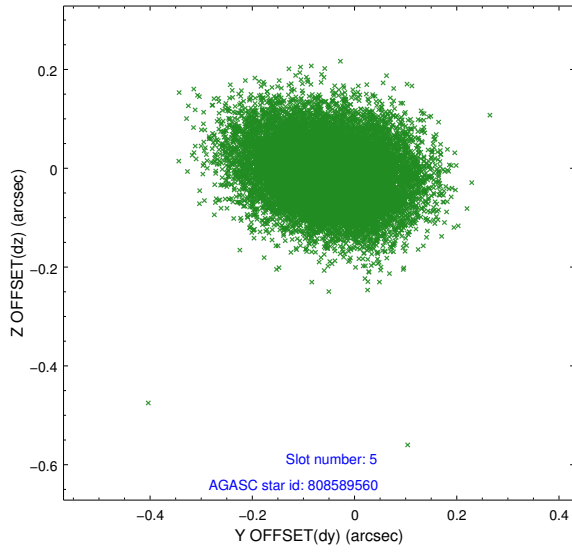
2.4.1 Slot 3



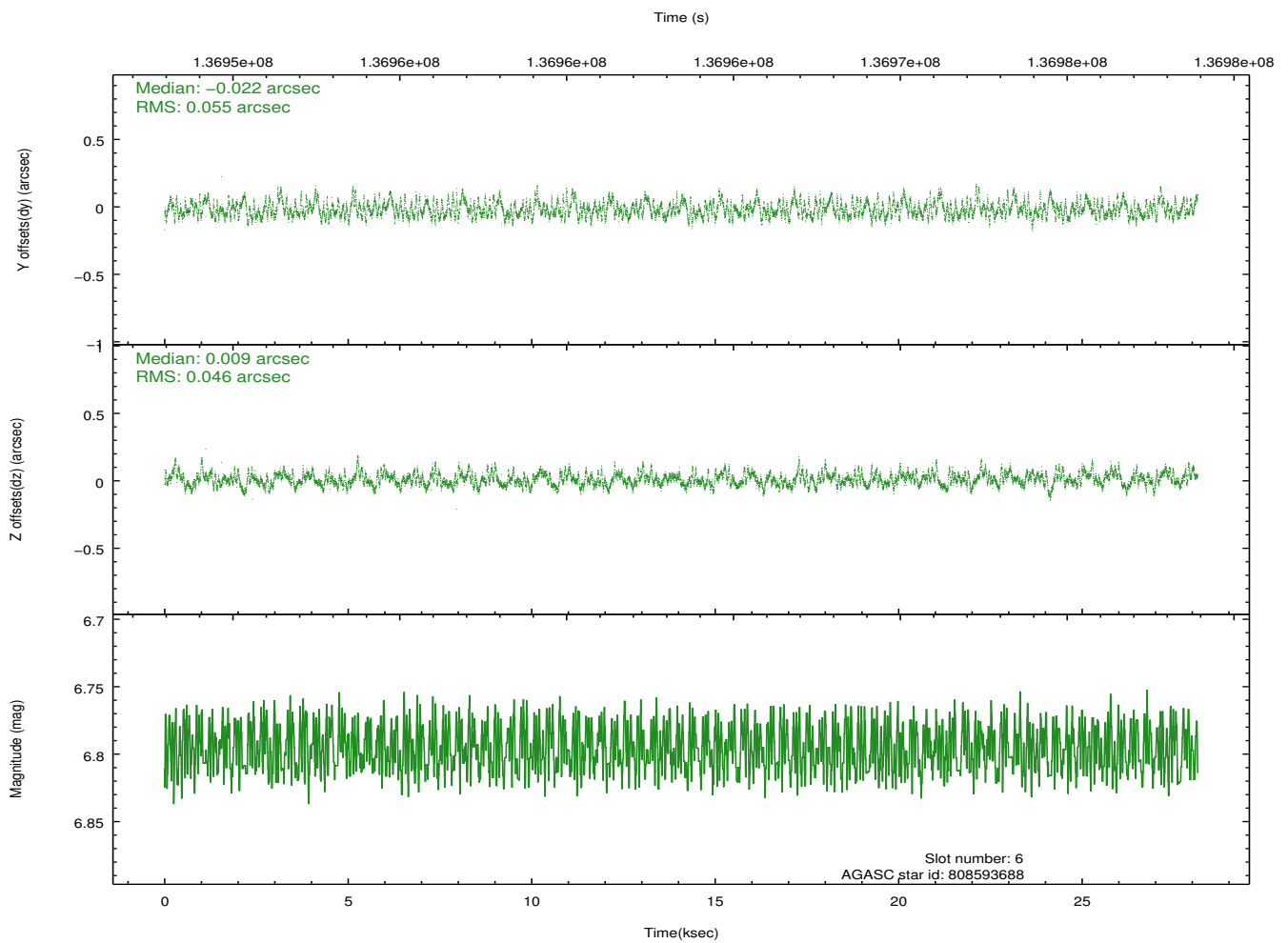
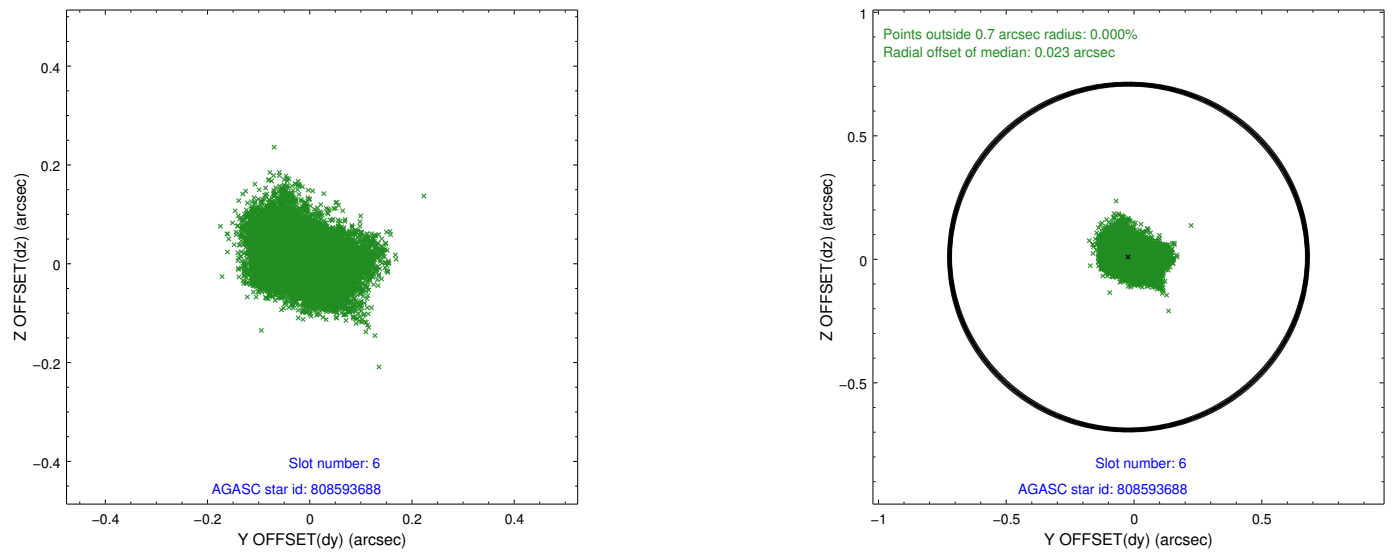
2.4.2 Slot 4



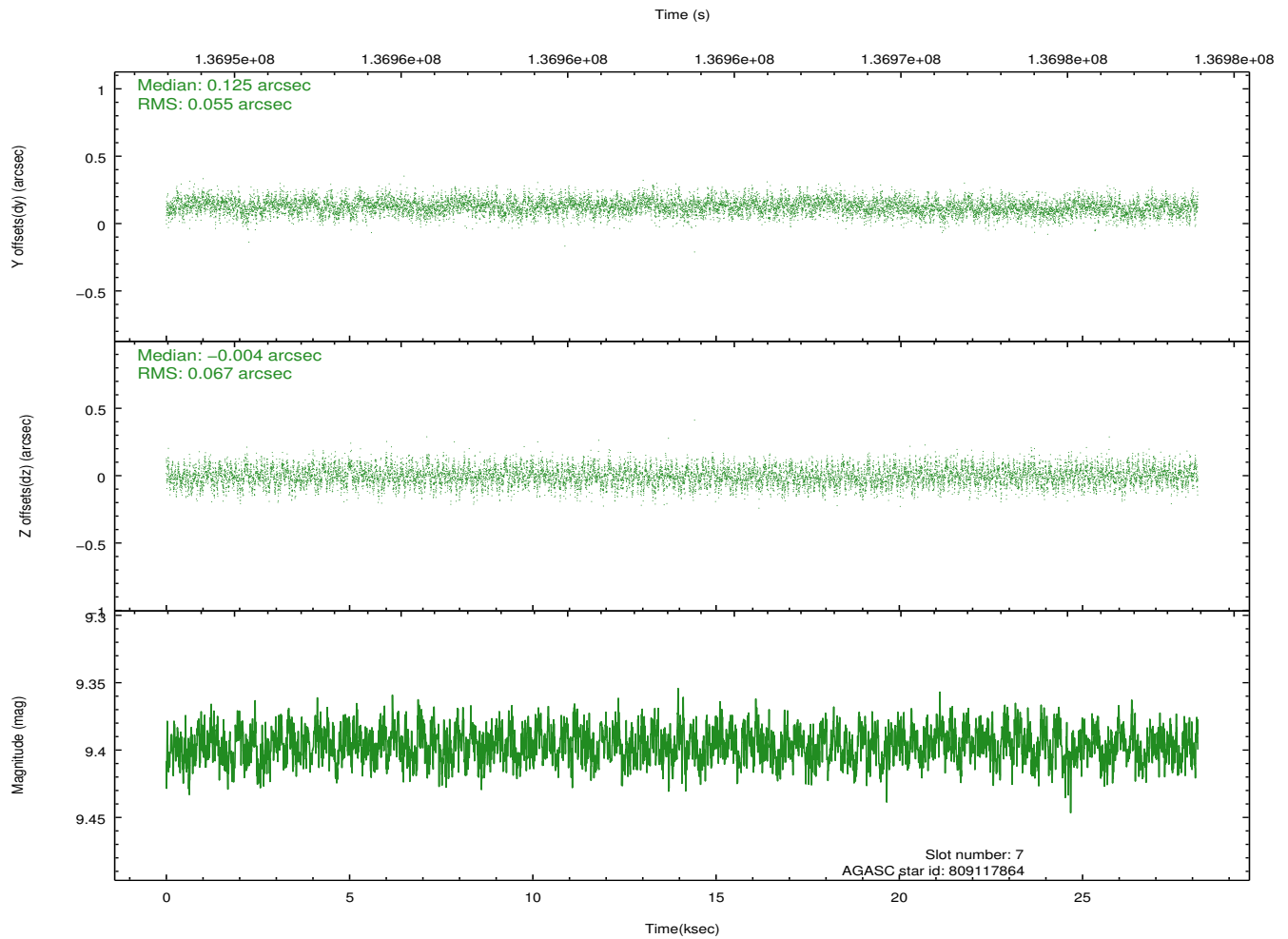
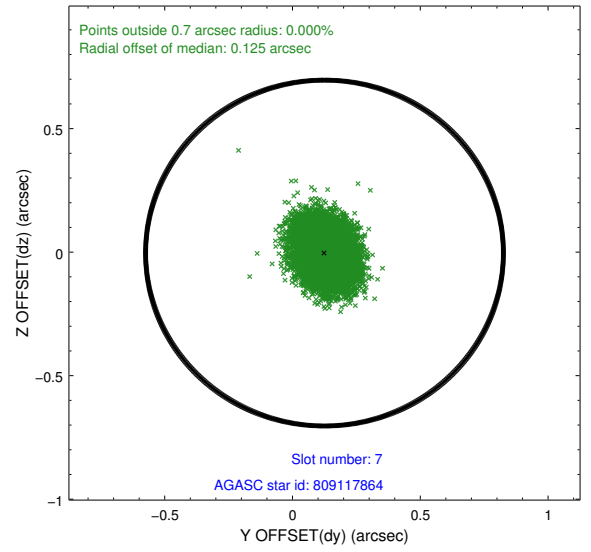
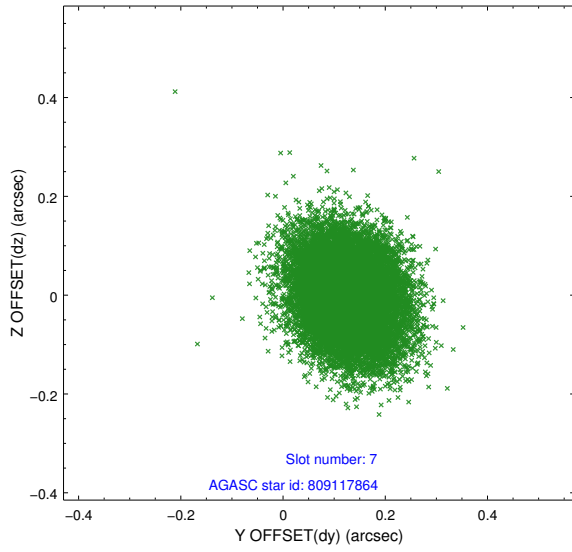
2.4.3 Slot 5



2.4.4 Slot 6

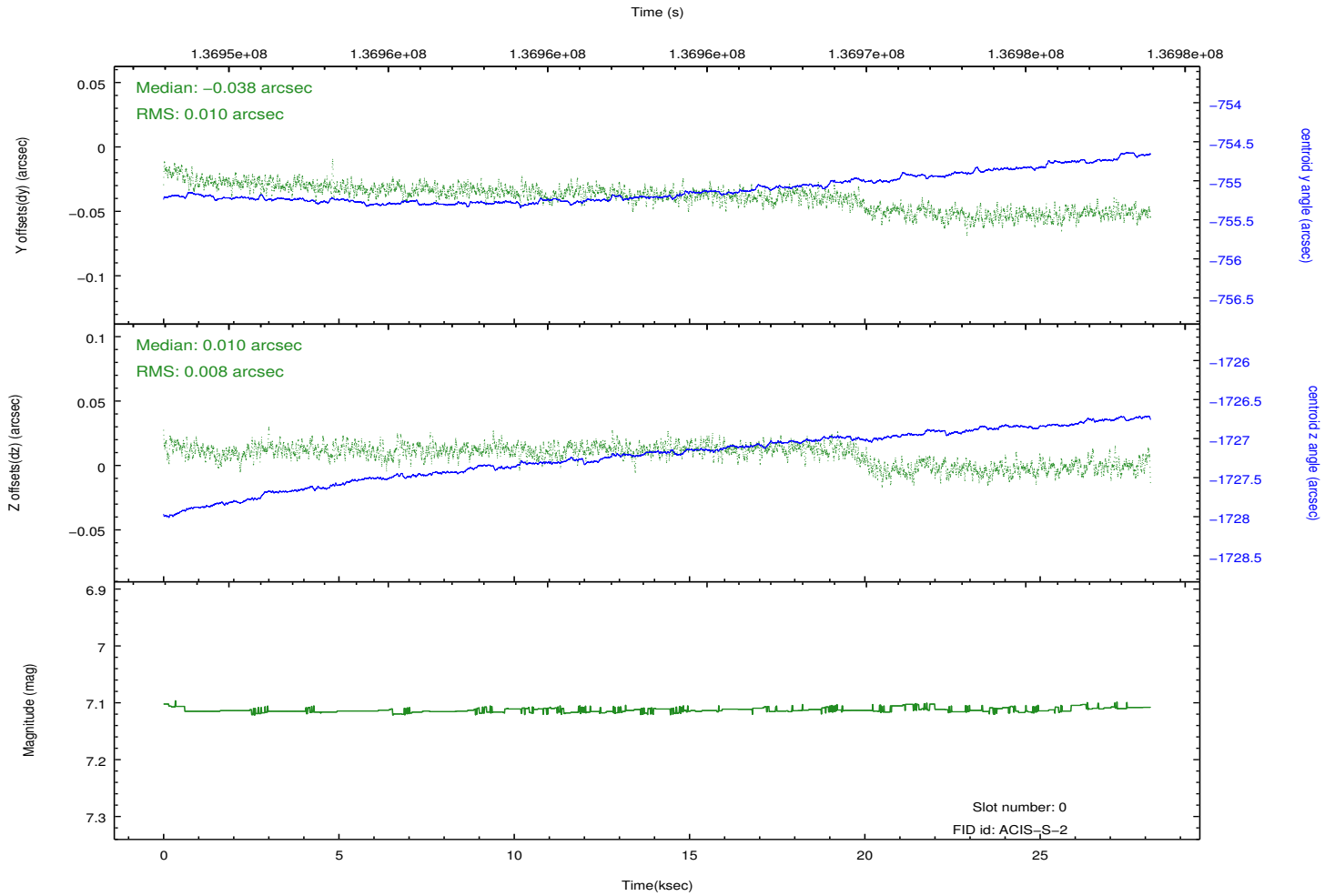
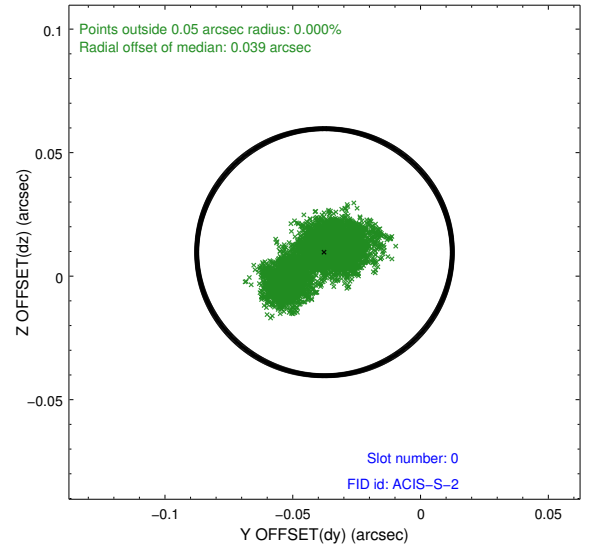
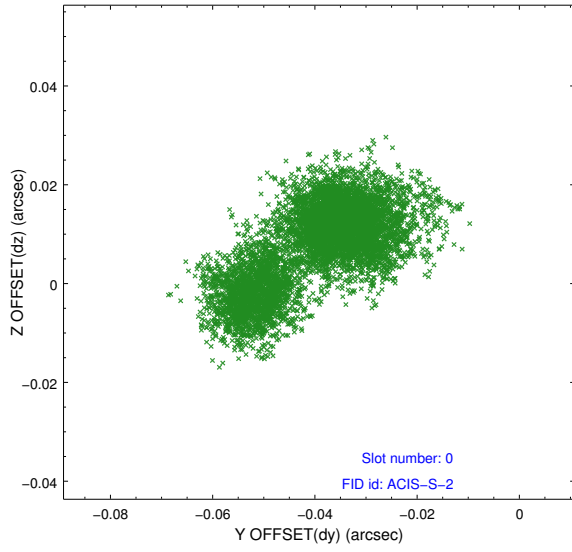


2.4.5 Slot 7

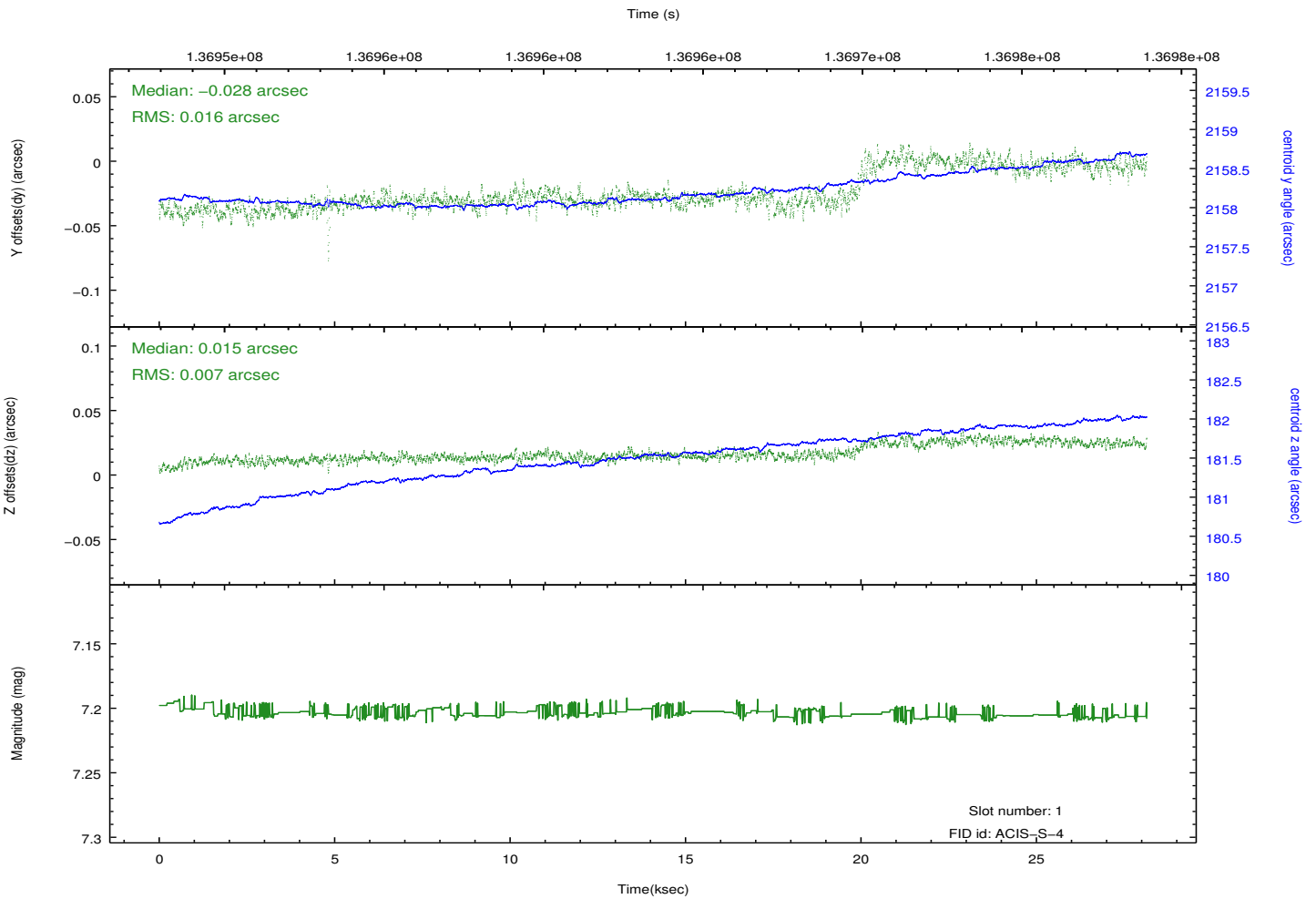
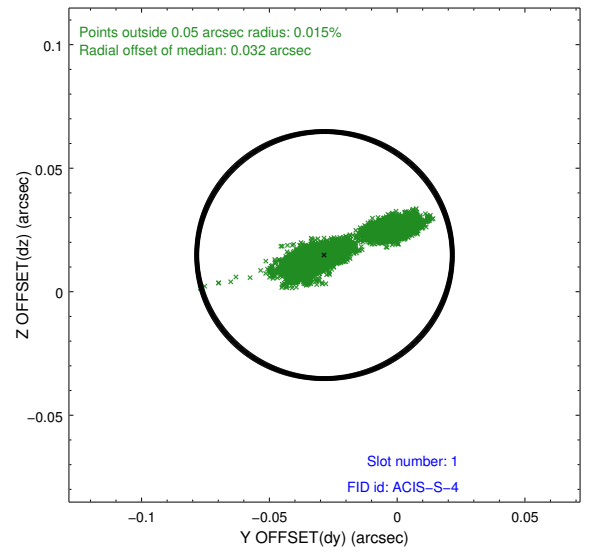
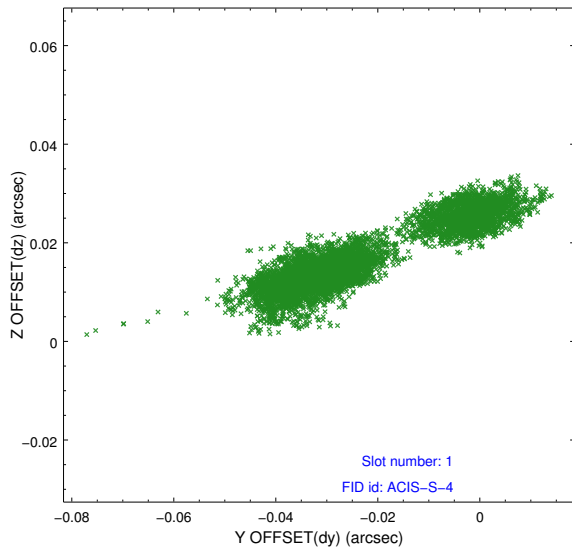


2.5 FID Slots

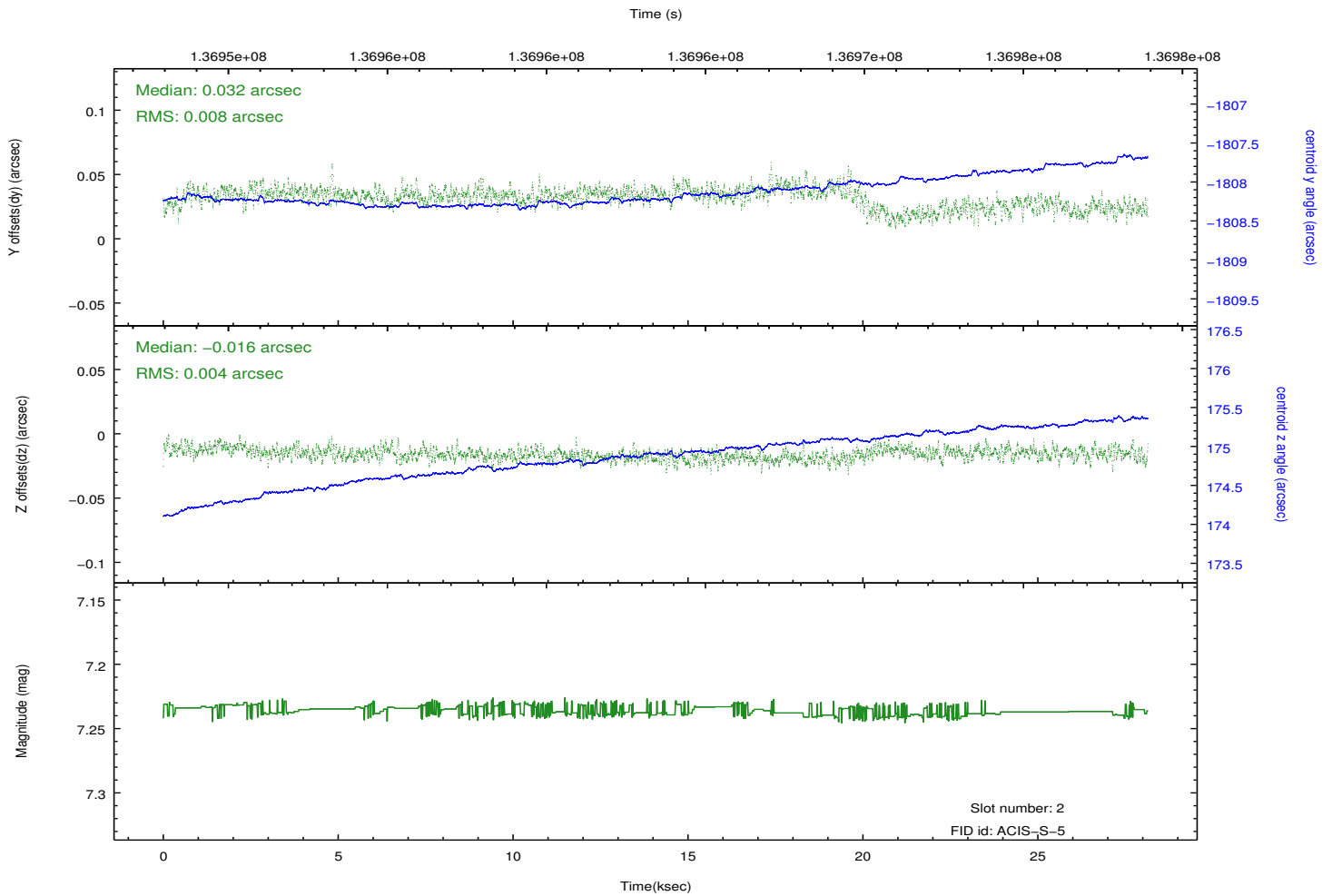
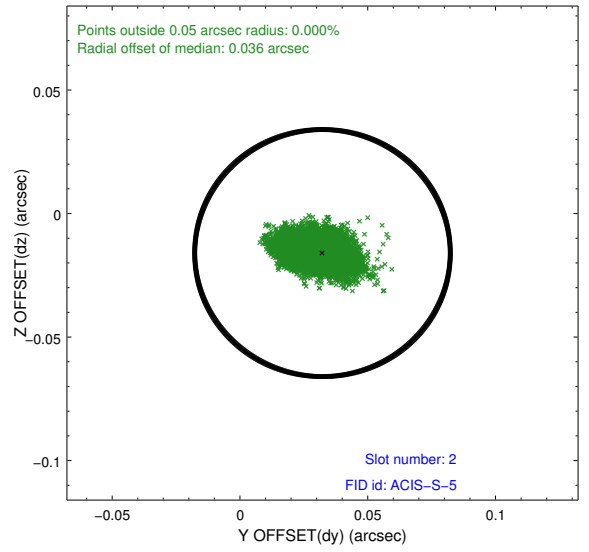
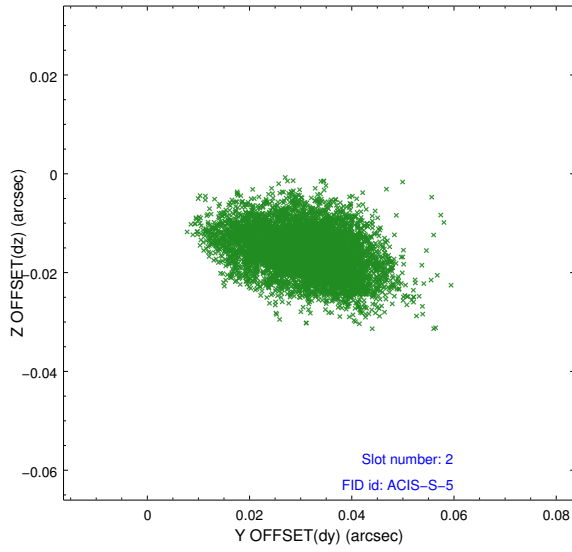
2.5.1 Slot 0



2.5.2 Slot 1



2.5.3 Slot 2



A Summary

A.1 Status

V&V Scientist	Beth Sundheim
V&V Date (YYYY-MM-DD)	2012.10.16
V&V Edition	1
V&V Disposition and Status	OK
V&V Charge Time	28.061

A.2 Comments

Window preference met.