

V&V Reference Report

L2 ASCDS Version : 8.4.5

Observation 2884 - L2 Version 4
Chandra X-Ray Center

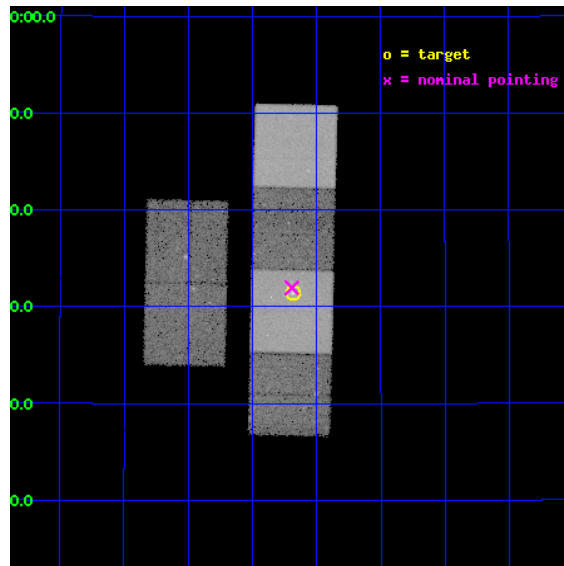
L2 Processing Date : Oct 22 2012

Contents

1	Front	2
2	OBI	3
2.1	OBI	3
2.1.1	Images	3
2.1.2	Bias	3
2.1.3	Parameters	4
2.1.4	Events	4
2.2	Compared Parameters	5
2.3	Aspect	6
2.4	Star Slots	9
2.4.1	Slot 3	9
2.4.2	Slot 4	10
2.4.3	Slot 5	11
2.4.4	Slot 6	12
2.4.5	Slot 7	13
2.5	FID Slots	14
2.5.1	Slot 0	14
2.5.2	Slot 1	15
2.5.3	Slot 2	16
A	Summary	17
A.1	Status	17
A.2	Comments	17

1 Front

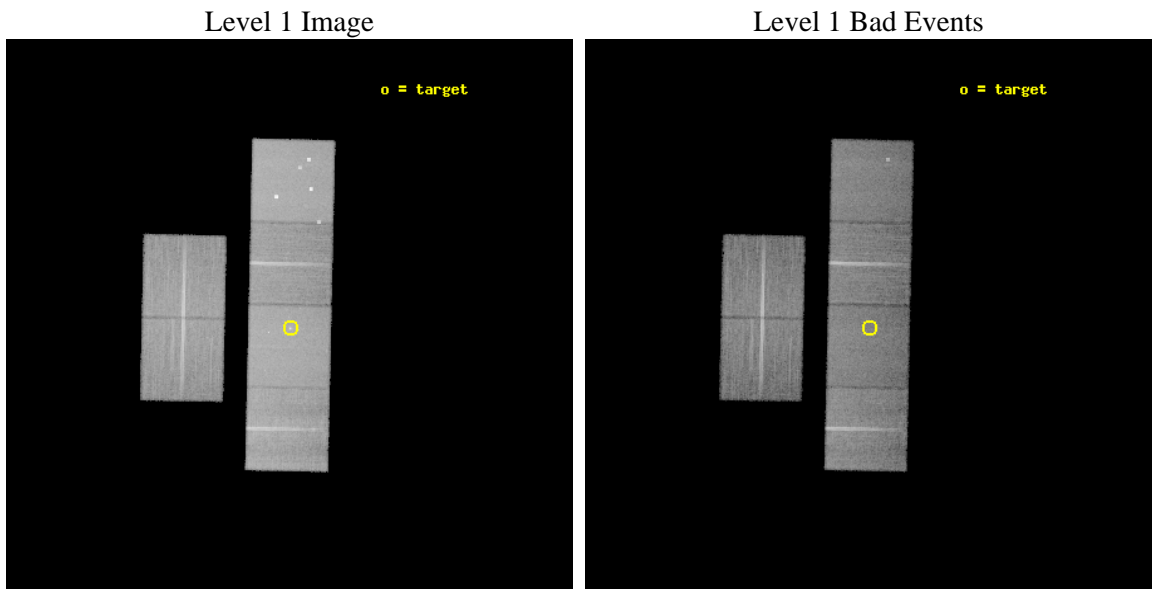
seq_num	600221	Sequence number
obs_id	2884	Observation id
title	ISOLATED ELLIPTICAL GALAXIES	Proposal title
observer	Prof Trevor Ponman	Principal investigator
object	NGC 4555	Source name
dtcycle	0	
cycle	P	events from which exps? Prim/Second/Both
ra_targ	188.921667	Observer's specified target RA [deg]
dec_targ	26.523111	Observer's specified target Dec [deg]
ra_nom	188.92333839934	Nominal RA [deg]
dec_nom	26.532642832149	Nominal Dec [deg]
roll_nom	91.233780952849	Nominal Roll [deg]
revision	4	Processing version of data
ontime	30350.876223087	Sum of GTIs [s]
livetime	29966.555153247	Livetime [s]
ontime2	30347.676272929	Sum of GTIs [s]
ontime3	30350.753103077	Sum of GTIs [s]
ontime5	30350.835183084	Sum of GTIs [s]
ontime6	30350.794143081	Sum of GTIs [s]
ontime7	30350.876223087	Sum of GTIs [s]
ontime8	30350.712063104	Sum of GTIs [s]
l2events	319224	Number of level 2 events



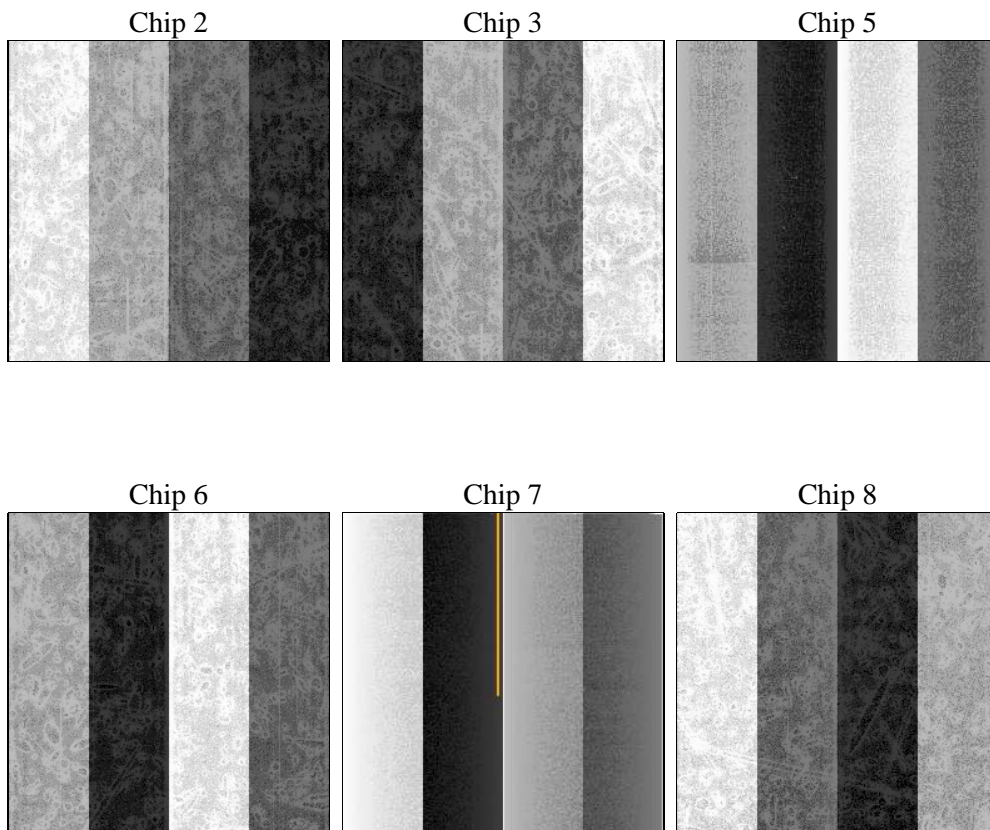
2 OBI

2.1 OBI

2.1.1 Images



2.1.2 Bias



2.1.3 Parameters

obi_num	0	Obi number	sched_exp_time	30390.000000	[s] Scheduled observation exposure time
ascdsver	8.4.5	Processing system revision	ontime	30350.876223087	Sum of GTIs [s]
caldbver	4.5.2	 	ontime2	30347.676272929	Sum of GTIs [s]
date	2012-10-22T15:07:21	Date and time of file creation	ontime3	30350.753103077	Sum of GTIs [s]
revision	4	Processing version of data	ontime5	30350.835183084	Sum of GTIs [s]
			ontime6	30350.794143081	Sum of GTIs [s]
			ontime7	30350.876223087	Sum of GTIs [s]
			ontime8	30350.712063104	Sum of GTIs [s]
			l1events	1412327	Number of level 1 events

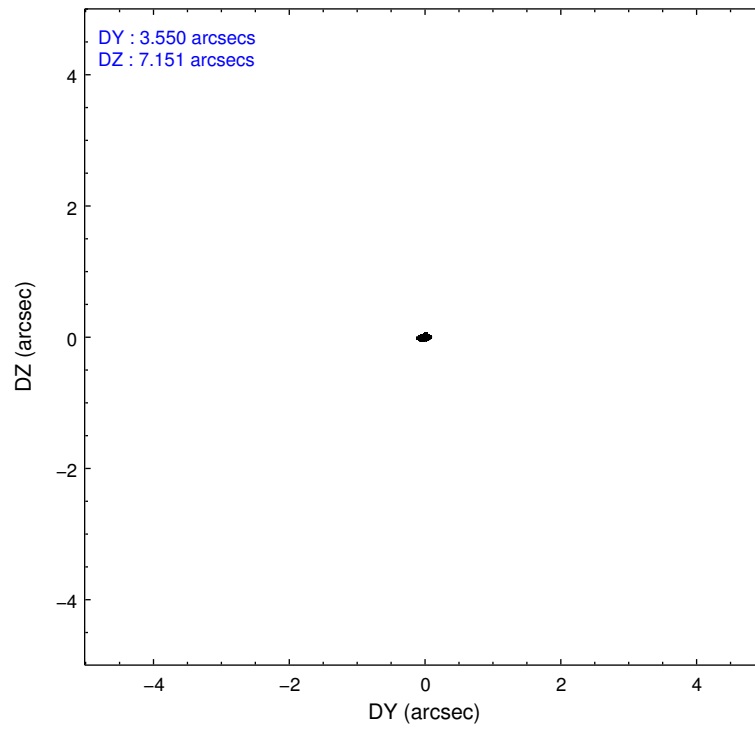
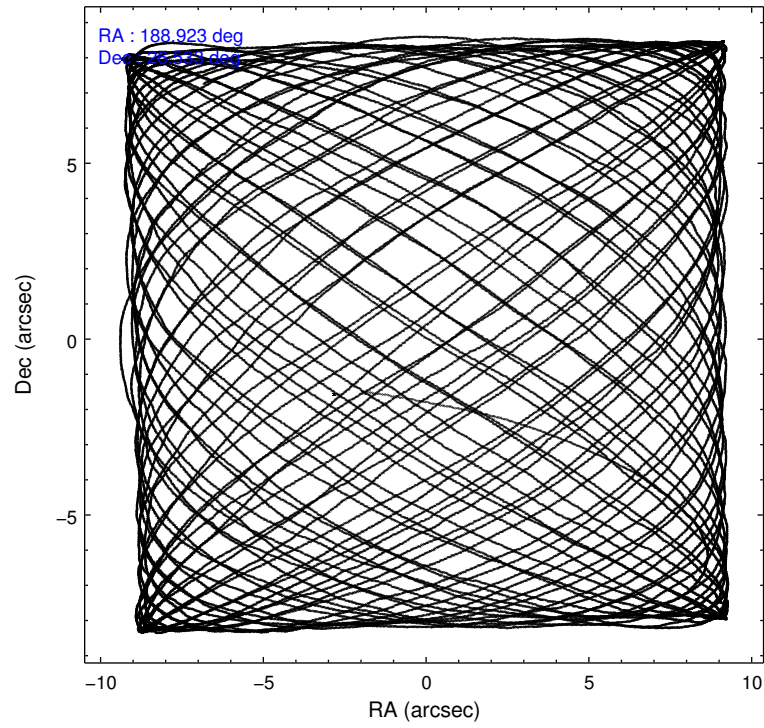
2.1.4 Events

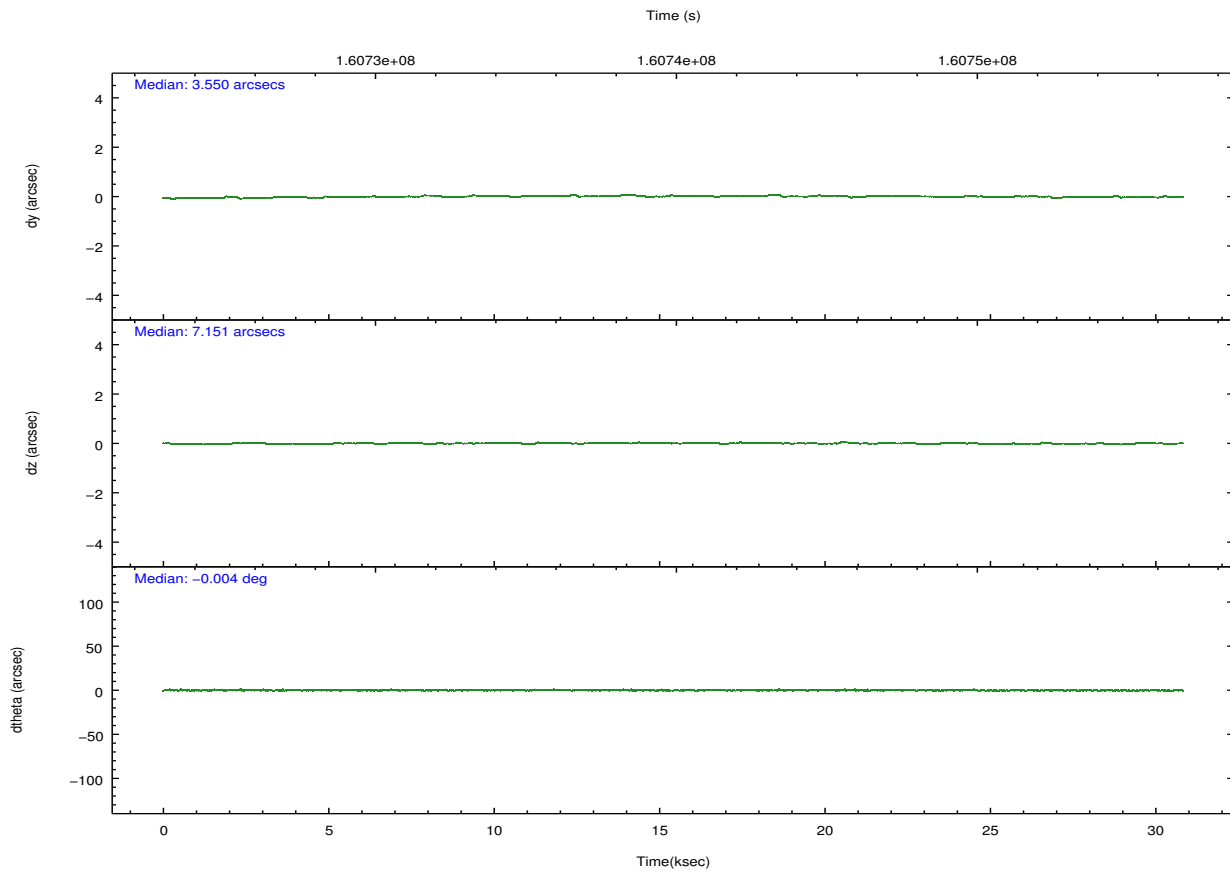
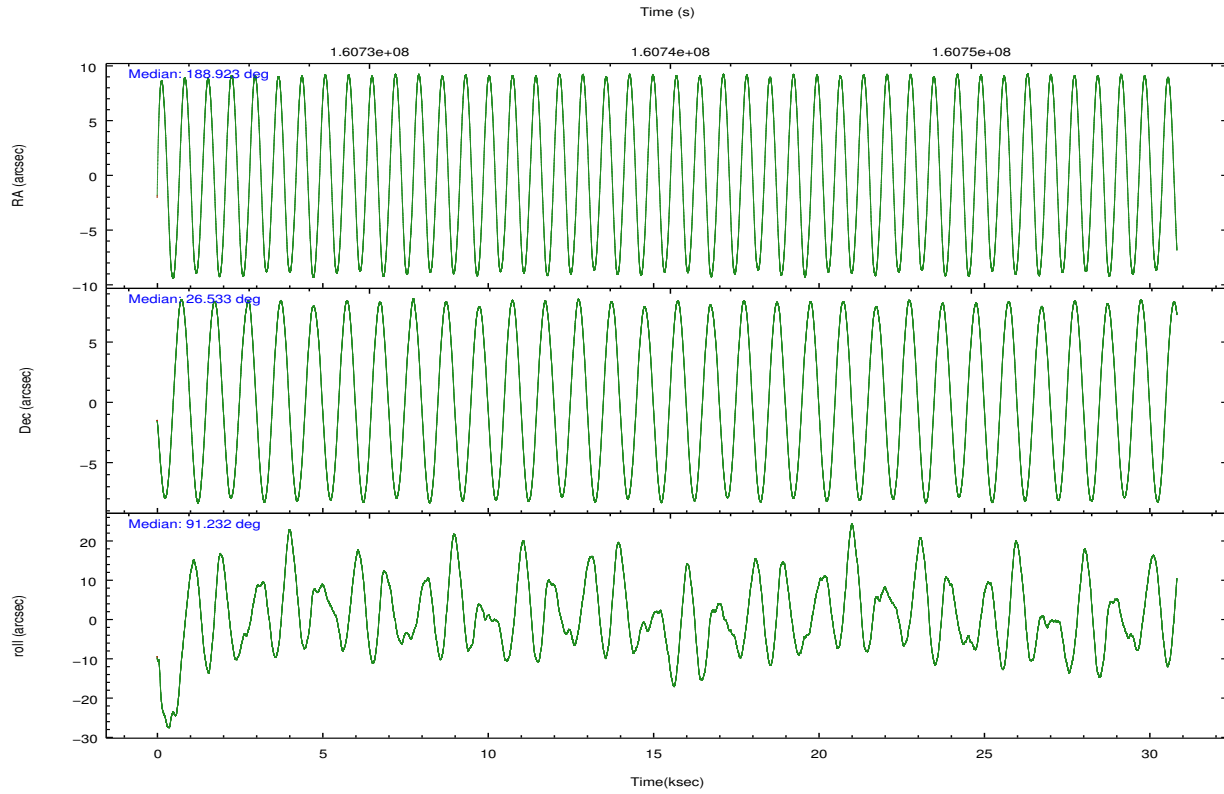
	ccd 2	ccd 3	ccd 5	ccd 6	ccd 7	ccd 8		ccd 2	ccd 3	ccd 5	ccd 6	ccd 7	ccd 8
level 1 events	202442	192077	304222	195623	269628	248335	grade 0 events	10263	9826	25215	9751	12089	16459
rejected events	179556	169826	157878	172045	154852	197121		5%	5%	8%	4%	4%	6%
rejected %	88%	88%	51%	87%	57%	79%	grade 1 events	108	107	397	90	251	176
								0%	0%	0%	0%	0%	0%
							grade 2 events	4549	3905	40715	4590	23032	11061
								2%	2%	13%	2%	8%	4%
							grade 3 events	2184	2291	5374	2319	10441	5493
								1%	1%	1%	1%	3%	2%
							grade 4 events	2167	2289	5212	2257	10199	5119
								1%	1%	1%	1%	3%	2%
							grade 5 events	7430	8304	21223	8829	25091	11464
								3%	4%	6%	4%	9%	4%
							grade 6 events	3725	3942	69842	4662	59026	13084
								1%	2%	22%	2%	21%	5%
							grade 7 events	172016	161413	136244	163125	129499	185479
								84%	84%	44%	83%	48%	74%

2.2 Compared Parameters

Parameter	Planned	Actual	Parameter	Planned	Actual
Instrument	ACIS	ACIS	Obspar format version number	7	7
Detector	ACIS-235678	ACIS-235678	Obspar file type	PREDICTED	ACTUAL
Grating	NONE	NONE	Obspar update status	NONE	UPDATED
Data mode	FAINT	FAINT	Number of optional ACIS chips dropped	0	0
Observation mode	POINTING	POINTING	On-chip summing requested	N	N
[deg] Pointing RA	188.939463	188.923338399337	Subarray requested	NONE	NONE
[deg] Pointing Dec	26.509583	26.53264283214883	Alternating exposures requested	N	N
[deg] Pointing Roll	91.069956	91.23378095284926	[s] Primary exposure time	0.000000	3.2
[mm] SIM focus pos	-0.684267	-0.6828225247311905			
[mm] SIM defocus	0	0.001444936568705701			
[mm] SIM translation stage pos	-190.132523	-190.1400660498719			
[mm] SIM translation stage offset	0	0.00754346686406393			
[s] Observation start time (MET)	160724909.184000	160723820.46611			
Observation start date	2003-02-04T05:47:25	2003-02-04T05:30:20			
[s] Observation end time (MET)	160755299.184000	160755732.30495			
Observation end date	2003-02-04T14:13:55	2003-02-04T14:22:12			
Read mode	TIMED	TIMED			

2.3 Aspect



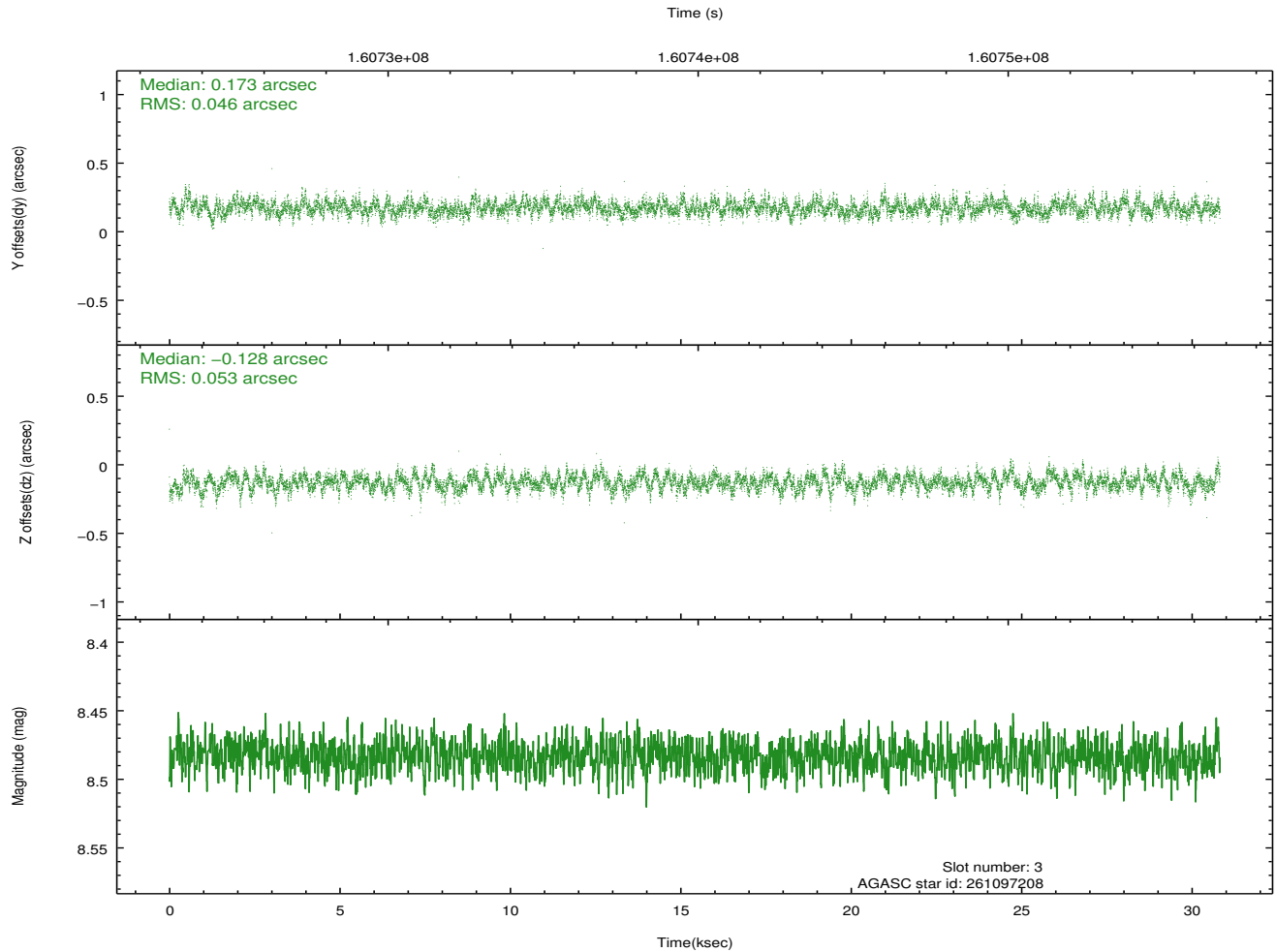
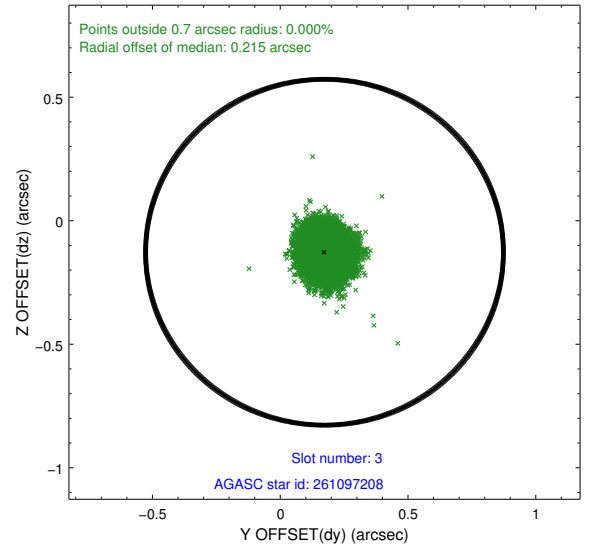
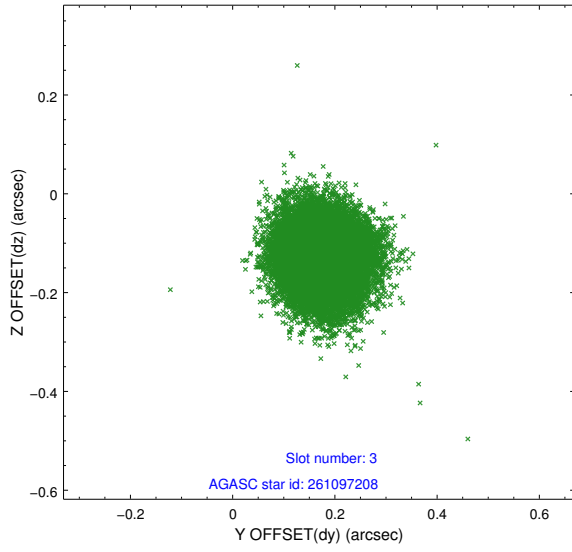


Slot Statistics

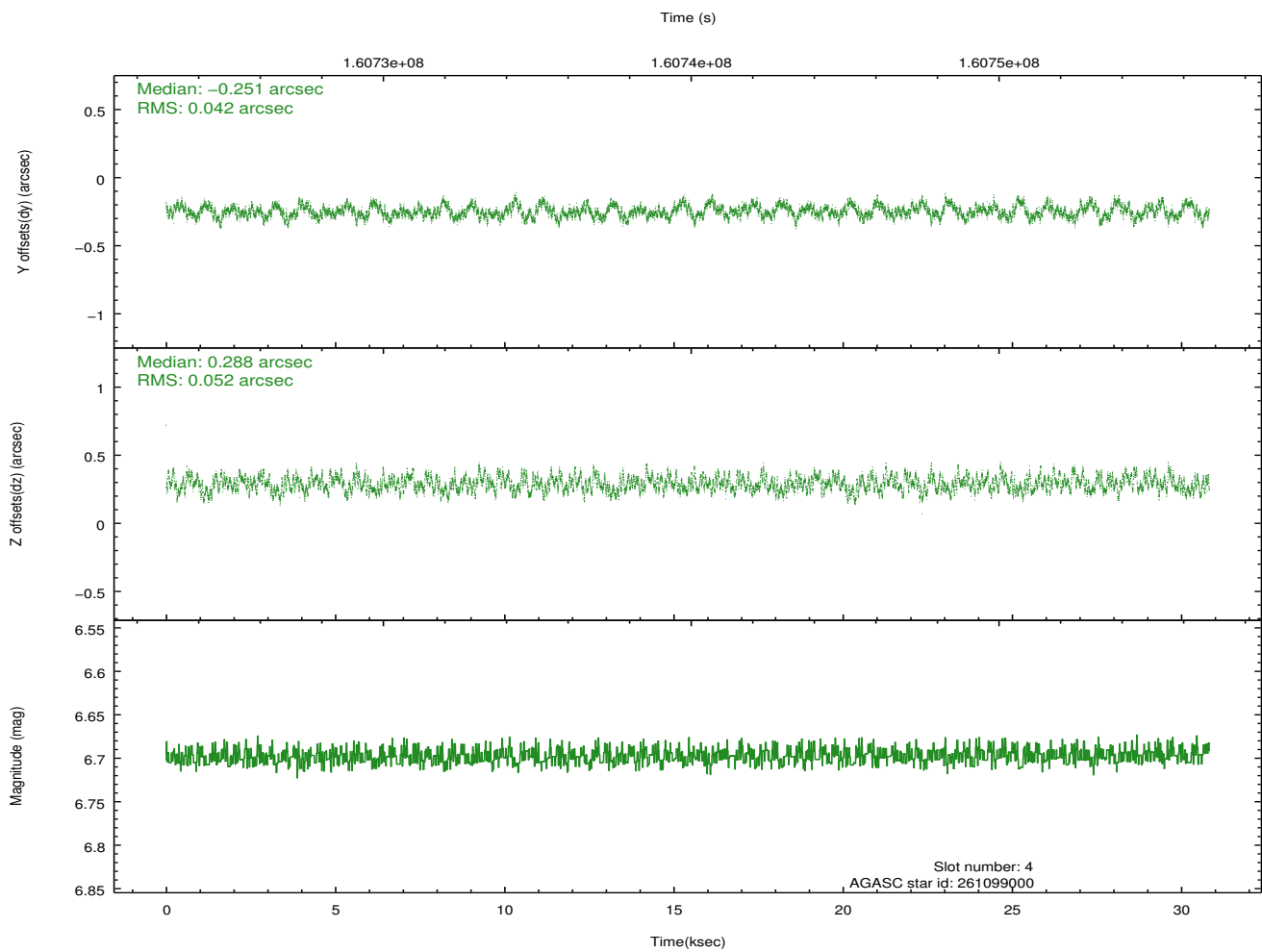
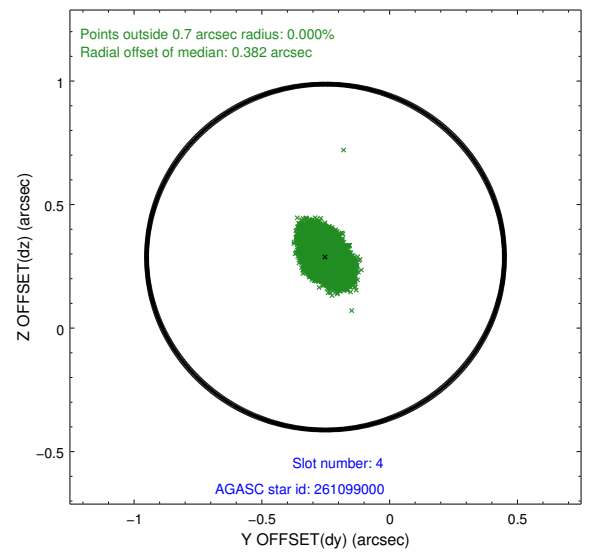
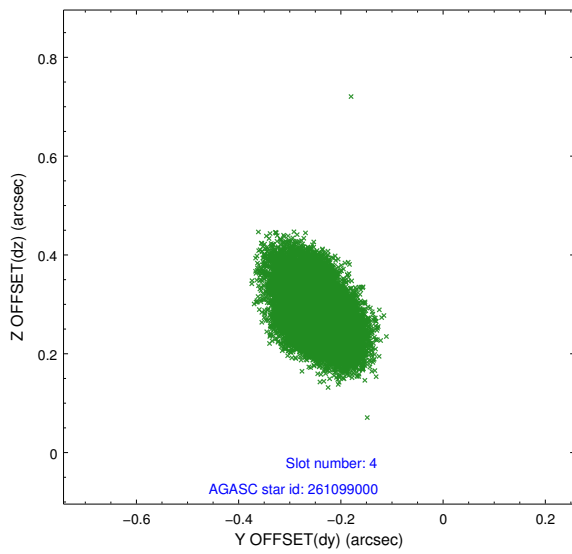
slot	status	id	mag	n_pts	med_dy	med_dz	dr1	dr2	ra	dec	mean_y	mean_z
0	FID	ACIS-S-2	7.12	7518	-0.012	0.005	0.007	0.011	0.000000	0.000000	-756.21	-1728.31
1	FID	ACIS-S-4	7.20	7518	0.004	0.004	0.006	0.010	0.000000	0.000000	2157.04	180.10
2	FID	ACIS-S-5	7.24	7518	-0.023	-0.001	0.006	0.011	0.000000	0.000000	-1808.98	173.84
3	GUIDE	261097208	8.48	15027	0.173	-0.128	0.075	0.119	188.588563	26.289040	-770.97	1146.89
4	GUIDE	261099000	6.70	15038	-0.251	0.288	0.071	0.116	189.221443	27.065454	1984.84	-940.82
5	BAD	261112888	10.59	14329	-0.226	-0.353	0.215	0.330	189.450763	26.963124	1605.64	-1670.28
6	GUIDE	261110680	9.86	15024	0.042	-0.046	0.111	0.181	188.468100	26.860951	1296.09	1489.78
7	GUIDE	261106896	9.50	14951	0.235	0.222	0.128	0.206	189.696095	26.751901	834.53	-2447.95

2.4 Star Slots

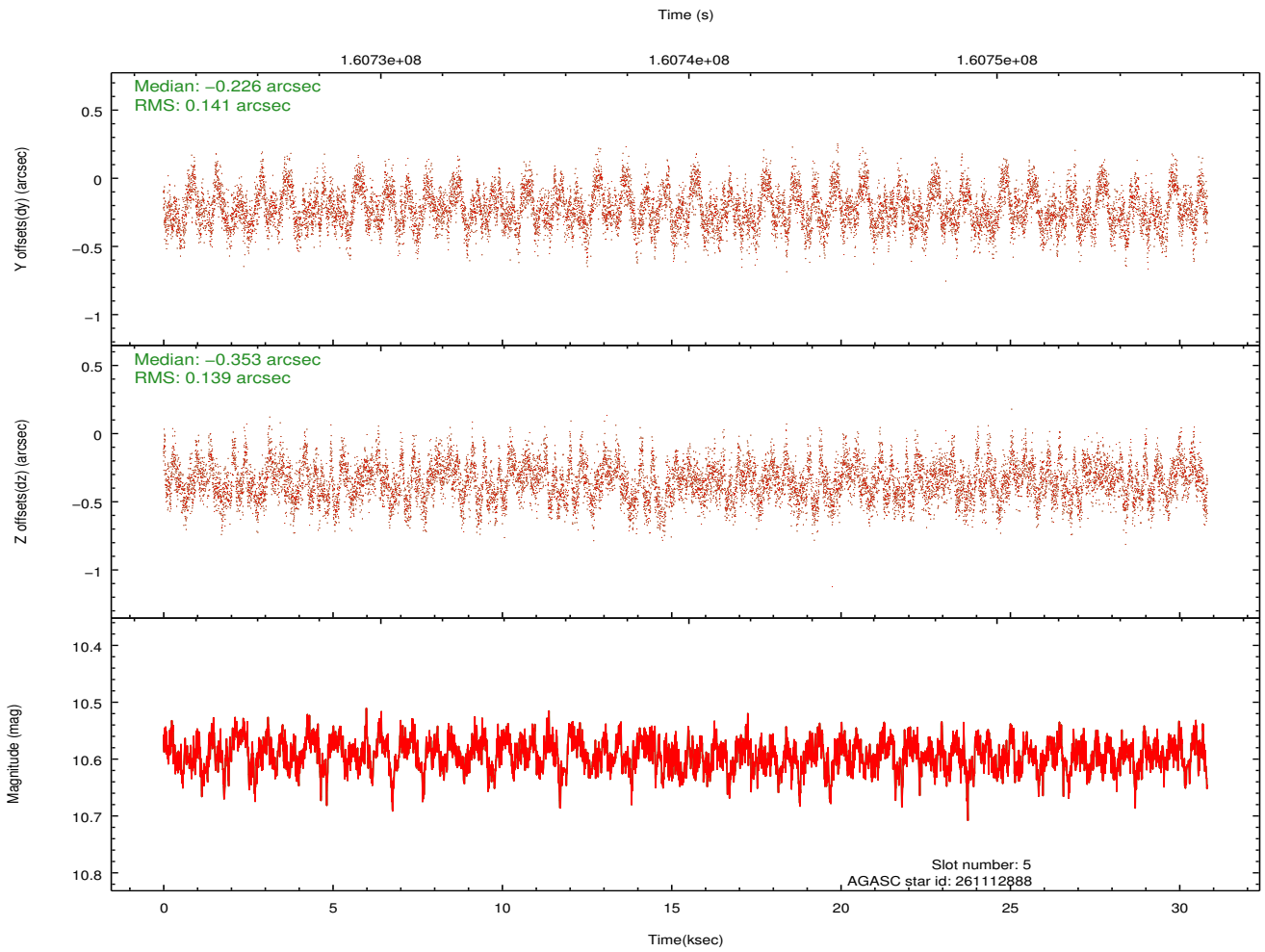
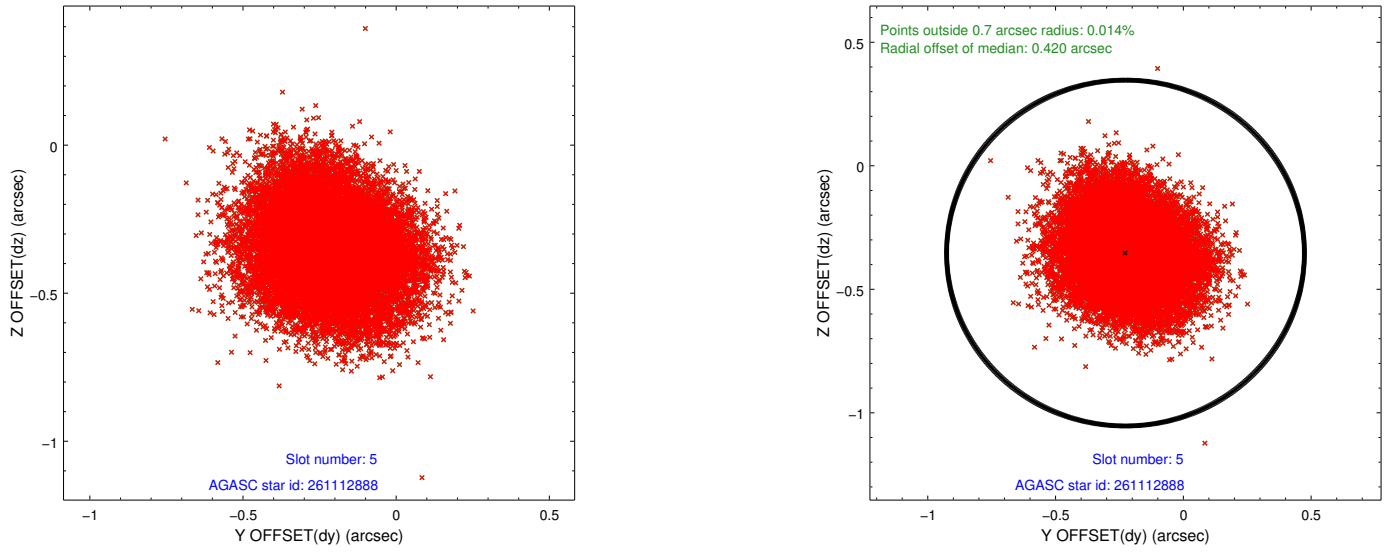
2.4.1 Slot 3



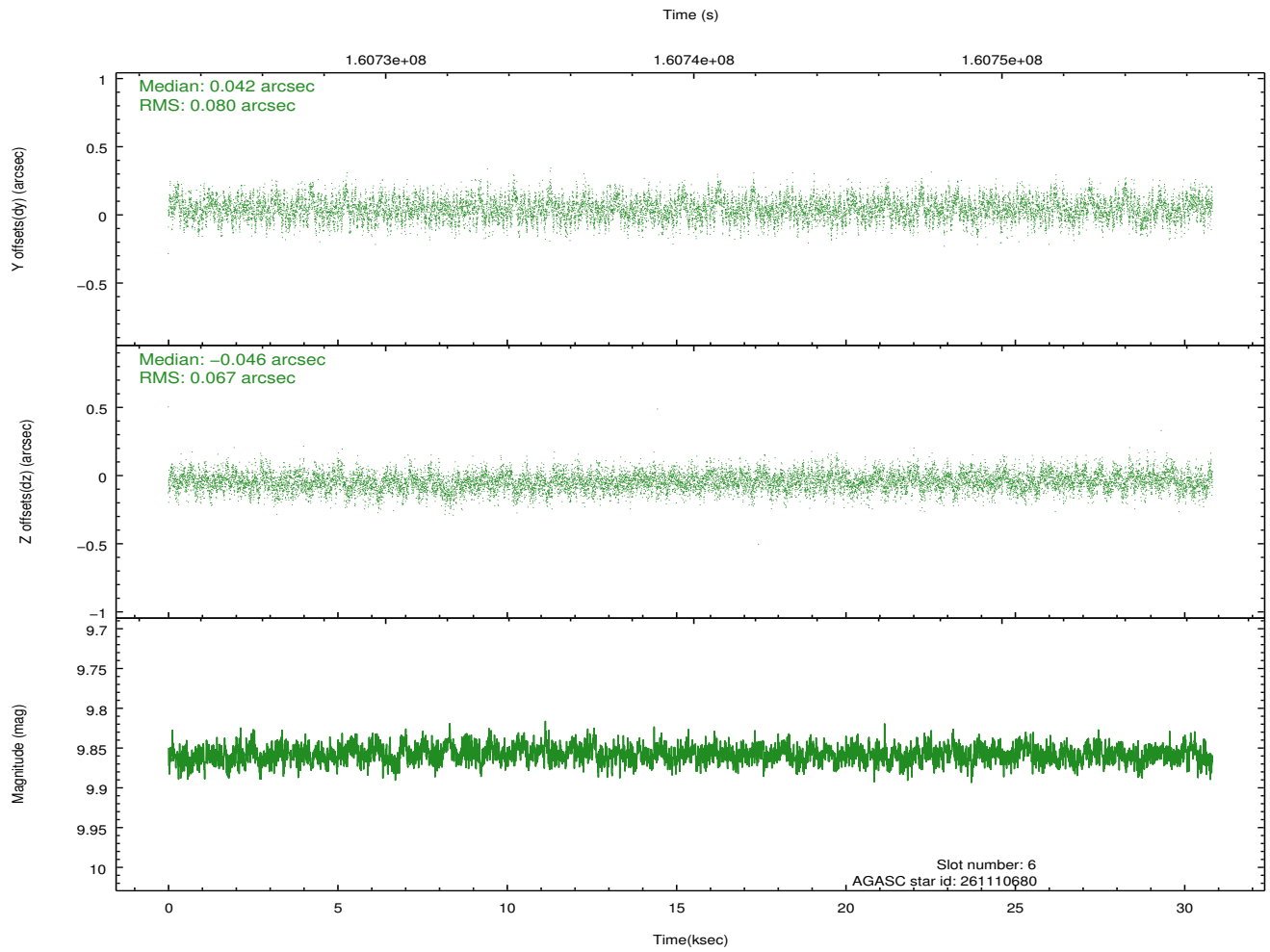
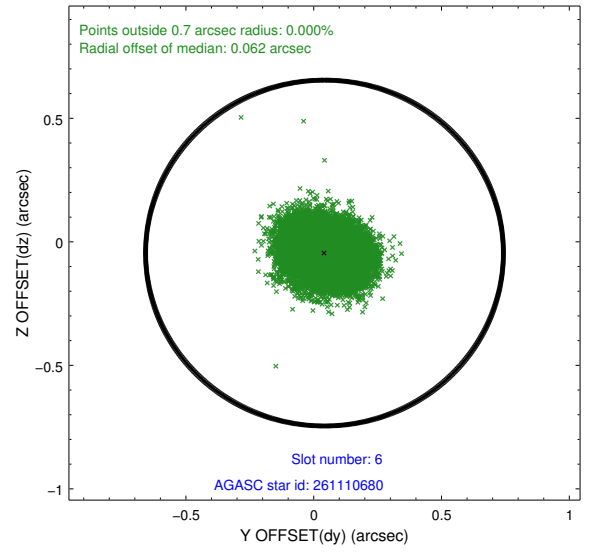
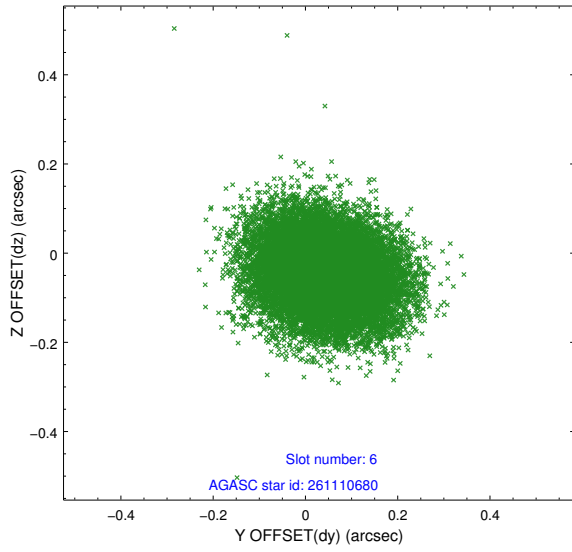
2.4.2 Slot 4



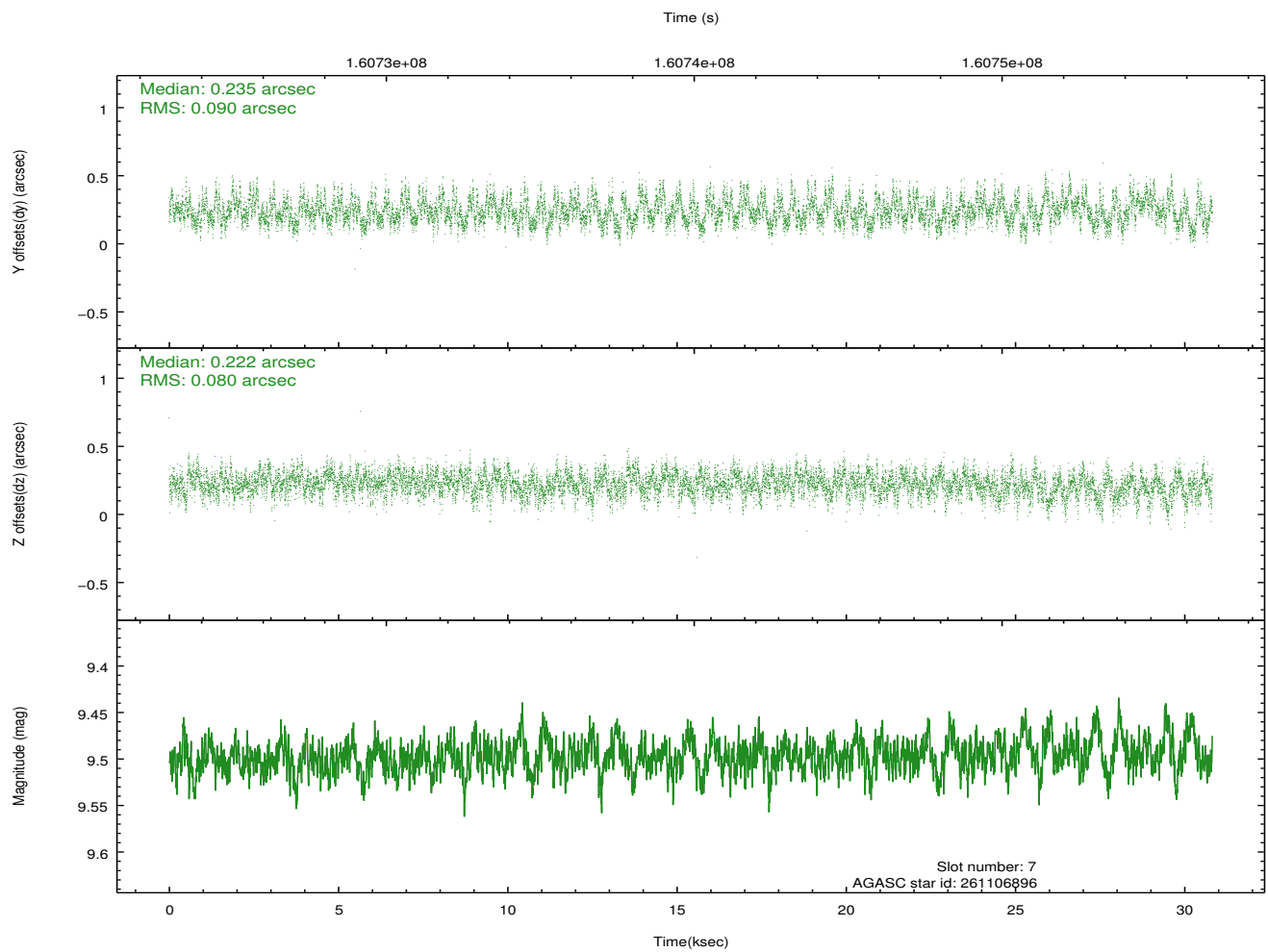
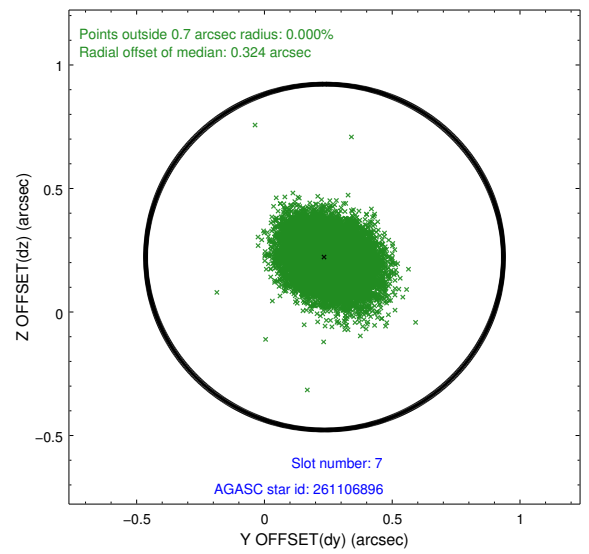
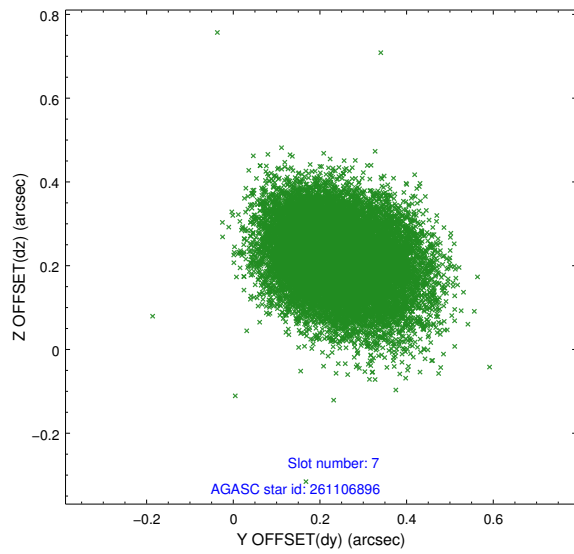
2.4.3 Slot 5



2.4.4 Slot 6

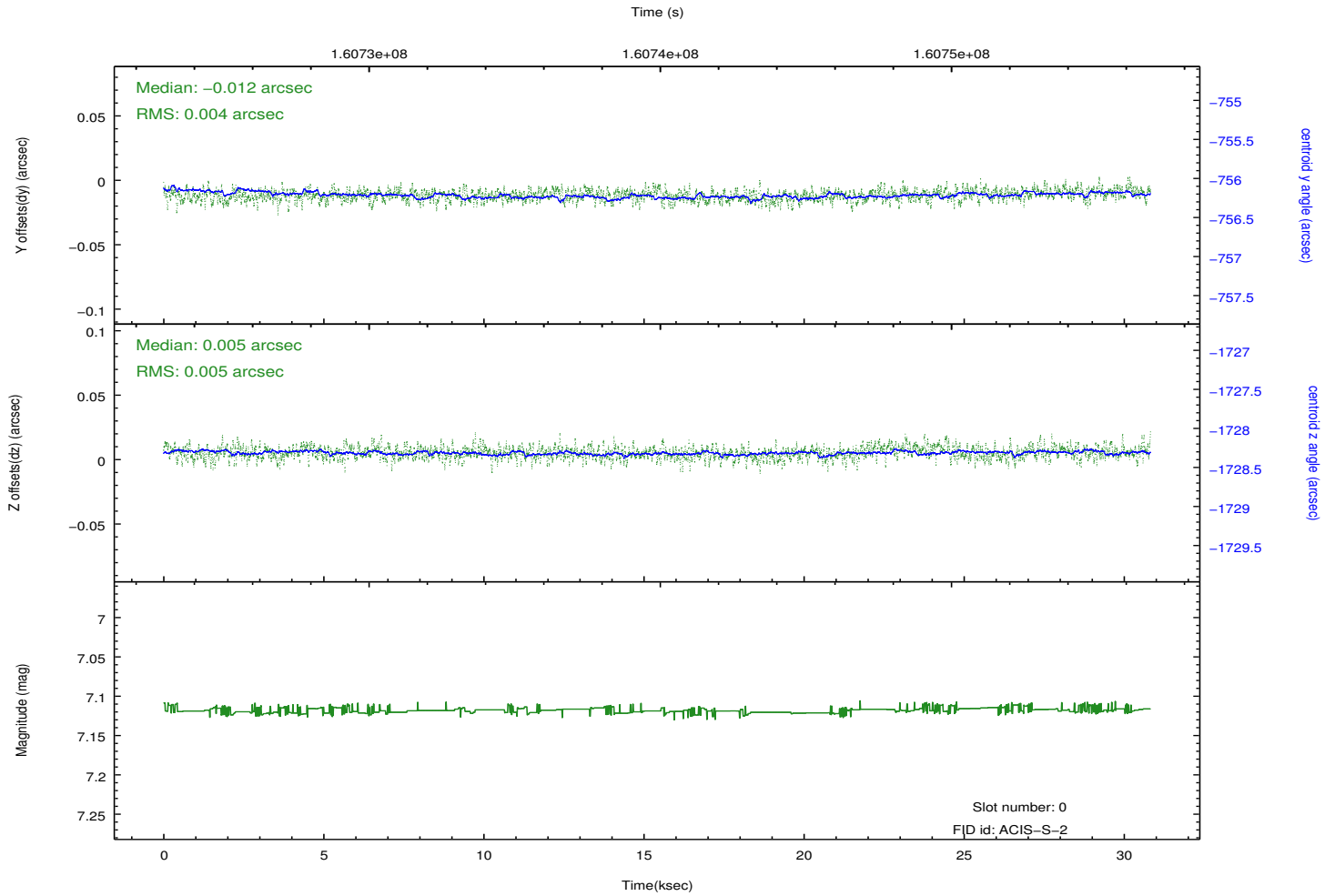
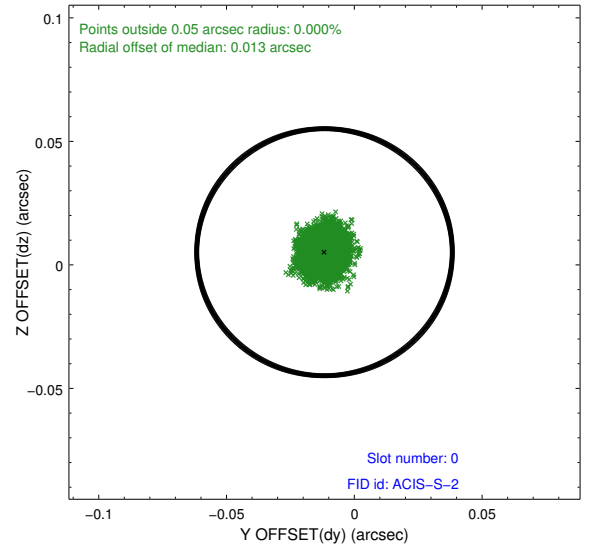
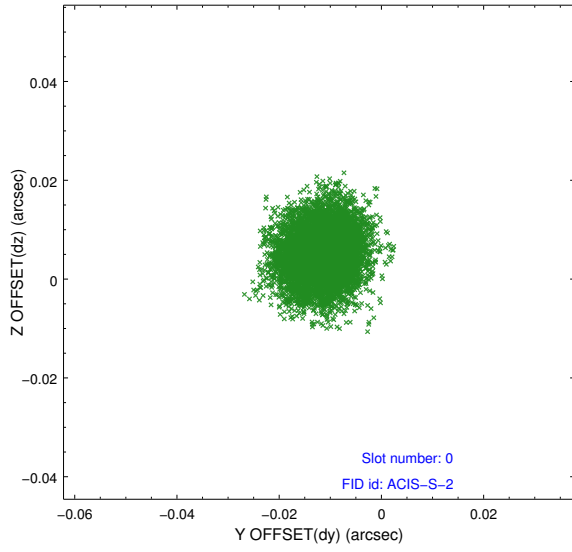


2.4.5 Slot 7

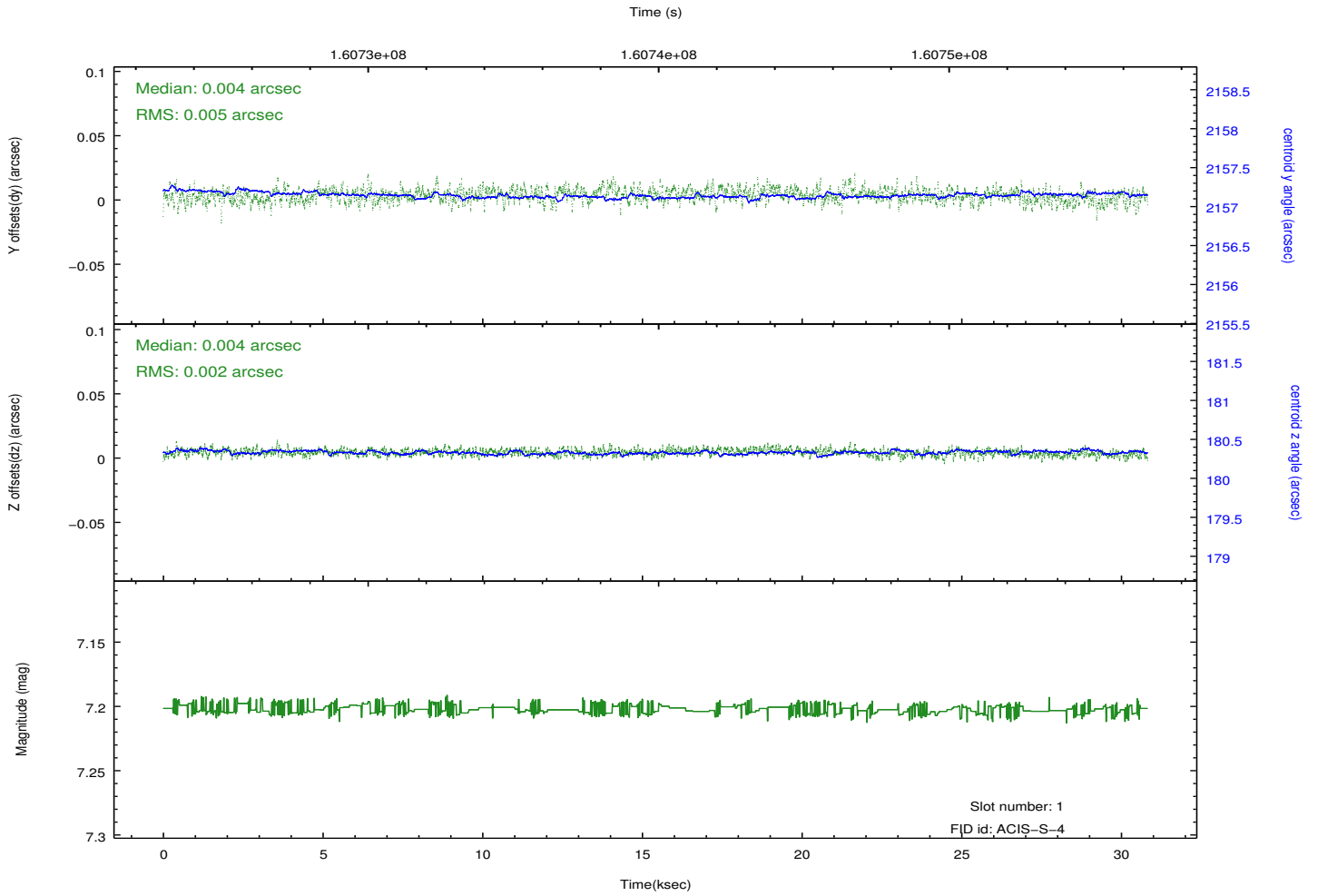
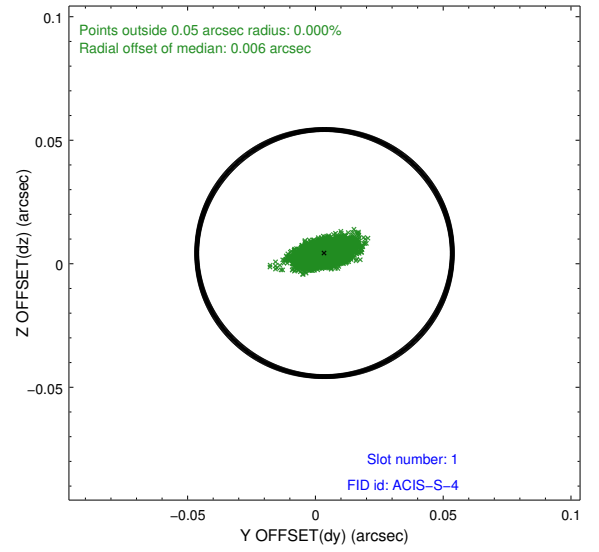
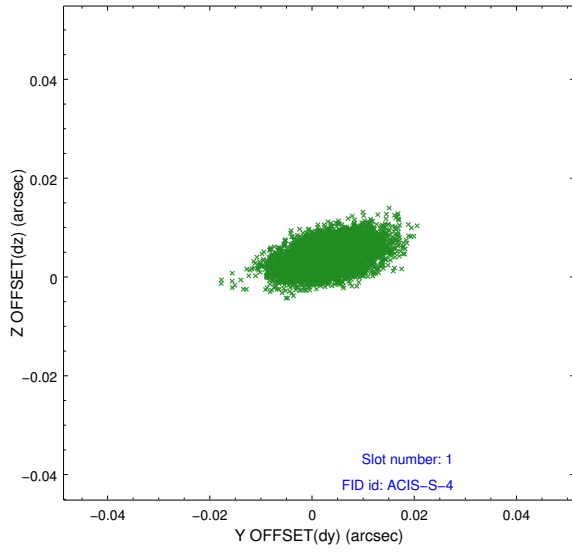


2.5 FID Slots

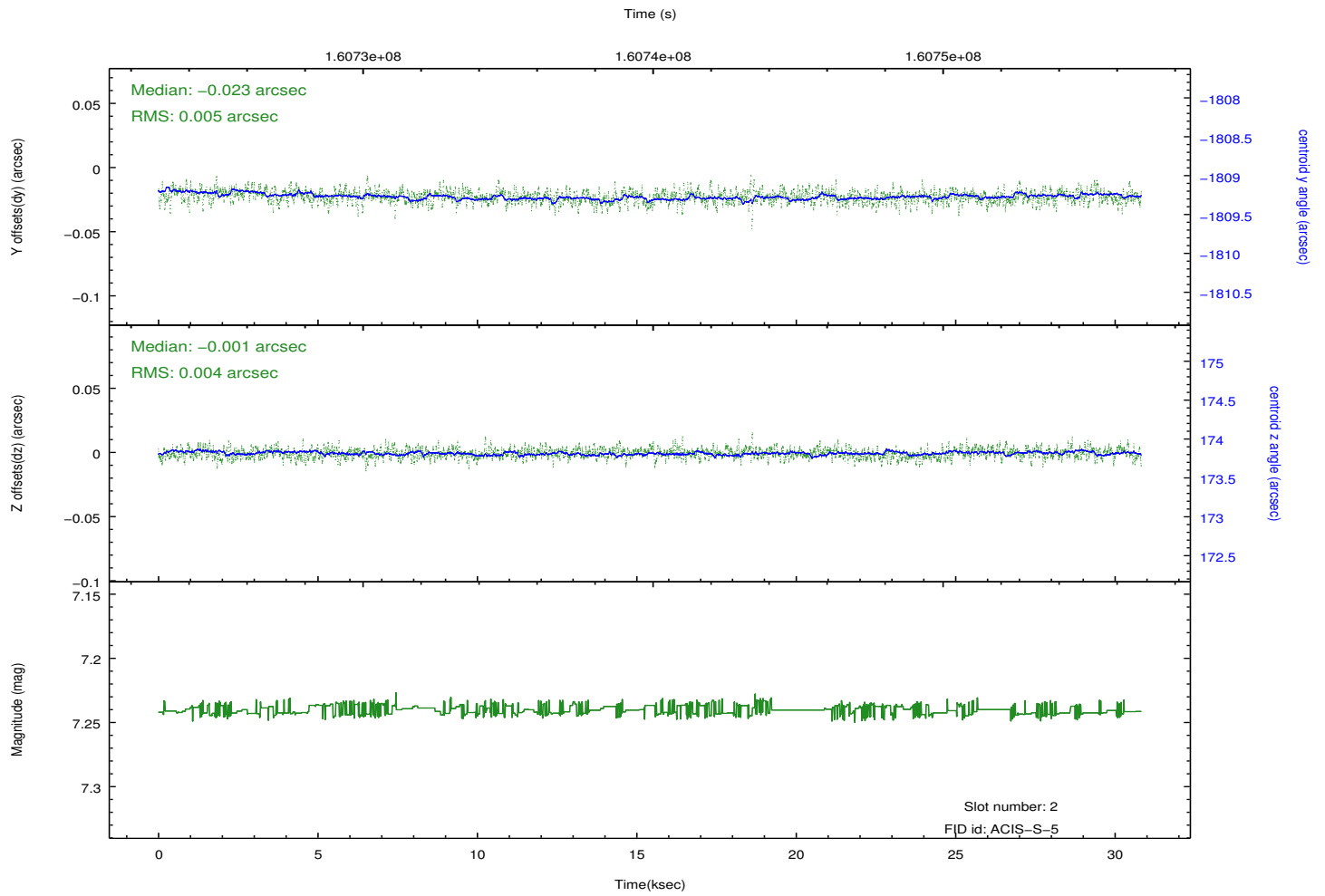
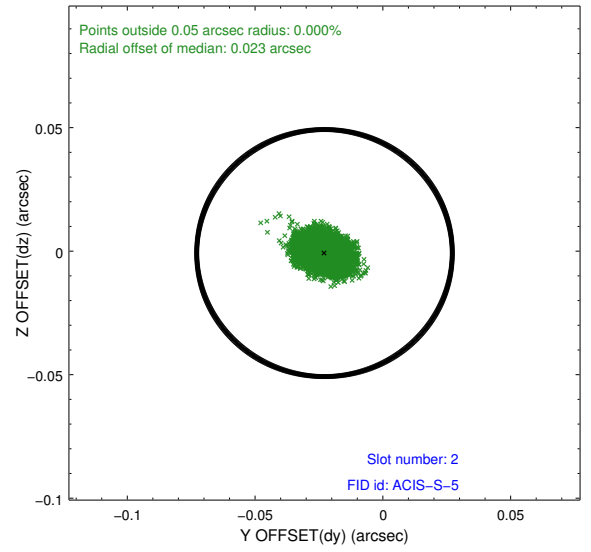
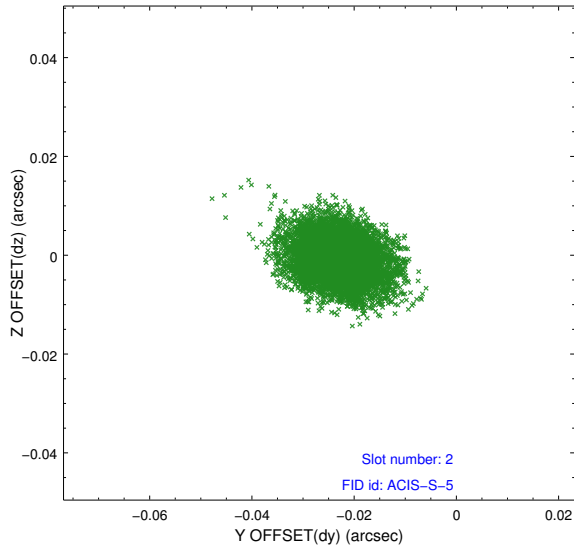
2.5.1 Slot 0



2.5.2 Slot 1



2.5.3 Slot 2



A Summary

A.1 Status

V&V Scientist	Jen Lauer
V&V Date (YYYY-MM-DD)	2012.11.06
V&V Edition	1
V&V Disposition and Status	OK
V&V Charge Time	30.348

A.2 Comments