

V&V Reference Report

L2 ASCDS Version : 8.4.5

Observation 3201 - L2 Version 3
Chandra X-Ray Center

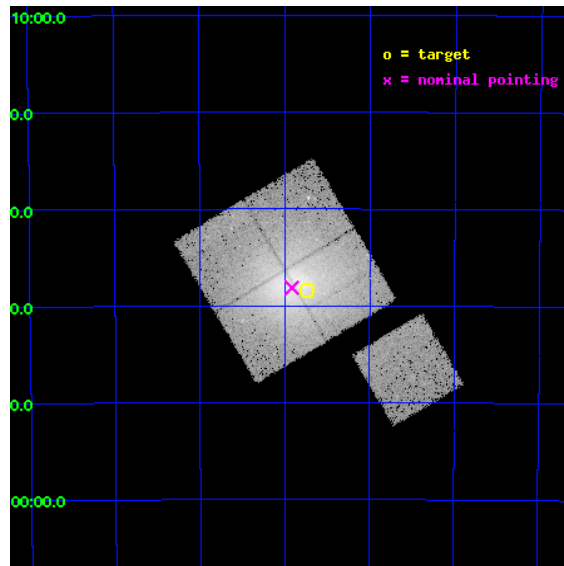
L2 Processing Date : Oct 9 2012

Contents

1	Front	2
2	OBI	3
2.1	OBI	3
2.1.1	Images	3
2.1.2	Bias	3
2.1.3	Parameters	4
2.1.4	Events	4
2.2	Compared Parameters	5
2.3	Aspect	6
2.4	Star Slots	9
2.4.1	Slot 3	9
2.4.2	Slot 4	10
2.4.3	Slot 5	11
2.4.4	Slot 6	12
2.4.5	Slot 7	13
2.5	FID Slots	14
2.5.1	Slot 0	14
2.5.2	Slot 1	15
2.5.3	Slot 2	16
A	Summary	17
A.1	Status	17
A.2	Comments	17

1 Front

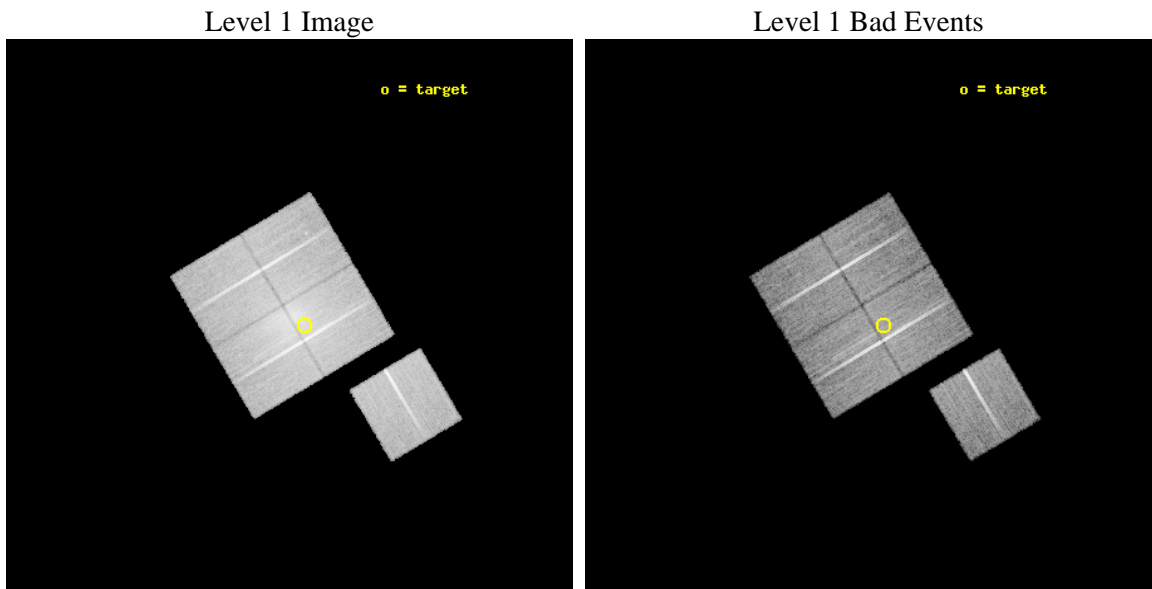
seq_num	800201	Sequence number
obs_id	3201	Observation id
title	GAS DENSITY DISCONTINUITIES IN MERGING CLUSTERS	Proposal title
observer	Dr Maxim Markevitch	Principal investigator
object	A3158	Source name
dtycycle	0	
cycle	P	events from which exps? Prim/Second/Both
ra_targ	55.682917	Observer's specified target RA [deg]
dec_targ	-53.641	Observer's specified target Dec [deg]
ra_nom	55.728853207838	Nominal RA [deg]
dec_nom	-53.635802931479	Nominal Dec [deg]
roll_nom	149.24566616251	Nominal Roll [deg]
revision	3	Processing version of data
ontime	25113.018001318	Sum of GTIs [s]
livetime	24784.897933196	Livetime [s]
ontime0	25119.299951673	Sum of GTIs [s]
ontime1	25116.158961505	Sum of GTIs [s]
ontime2	25113.018001318	Sum of GTIs [s]
ontime3	25116.158991426	Sum of GTIs [s]
ontime6	25116.158961505	Sum of GTIs [s]
l2events	163740	Number of level 2 events



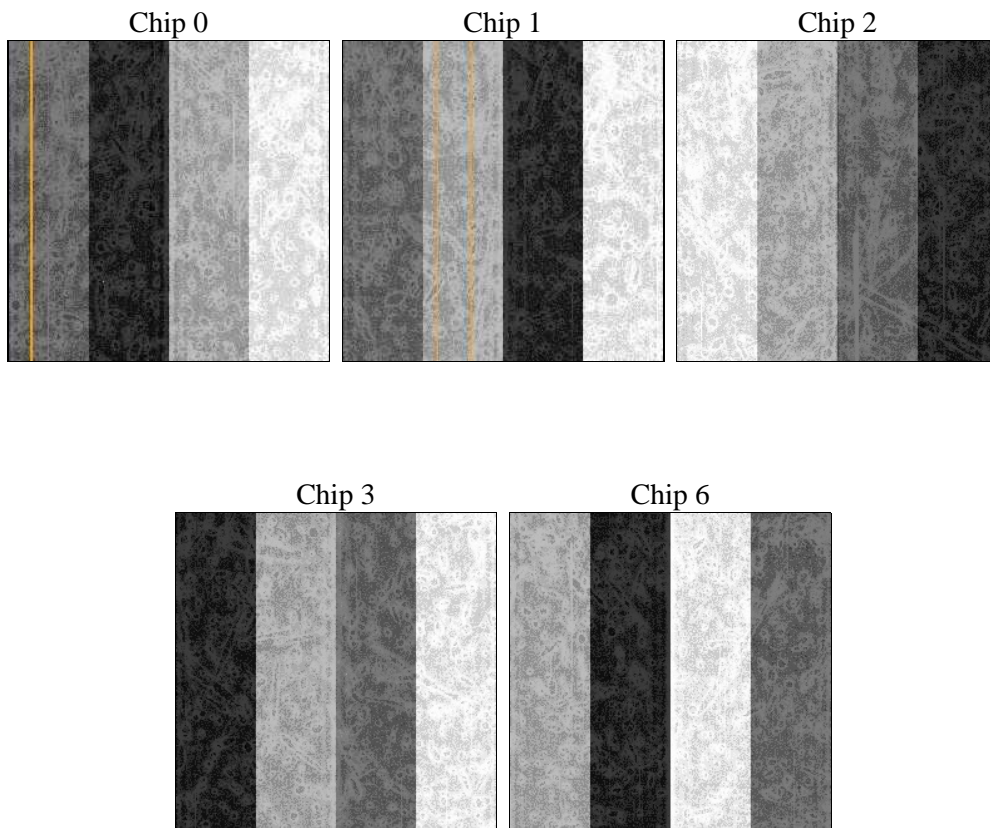
2 OBI

2.1 OBI

2.1.1 Images



2.1.2 Bias



2.1.3 Parameters

obi_num	0	Obi number	sched_exp_time	25000.000000	[s] Scheduled observation exposure time
ascdsver	8.4.5	Processing system revision	ontime	25113.018001318	Sum of GTIs [s]
caldsver	4.5.2	 	ontime0	25119.299951673	Sum of GTIs [s]
date	2012-10-10T01:00:38	Date and time of file creation	ontime1	25116.158961505	Sum of GTIs [s]
revision	3	Processing version of data	ontime2	25113.018001318	Sum of GTIs [s]
			ontime3	25116.158991426	Sum of GTIs [s]
			ontime6	25116.158961505	Sum of GTIs [s]
			l1events	804287	Number of level 1 events

2.1.4 Events

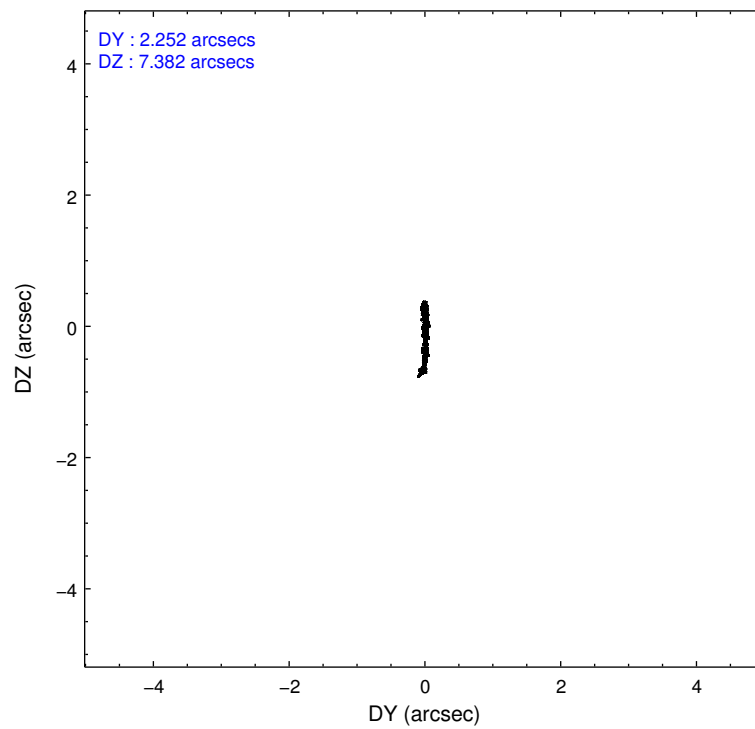
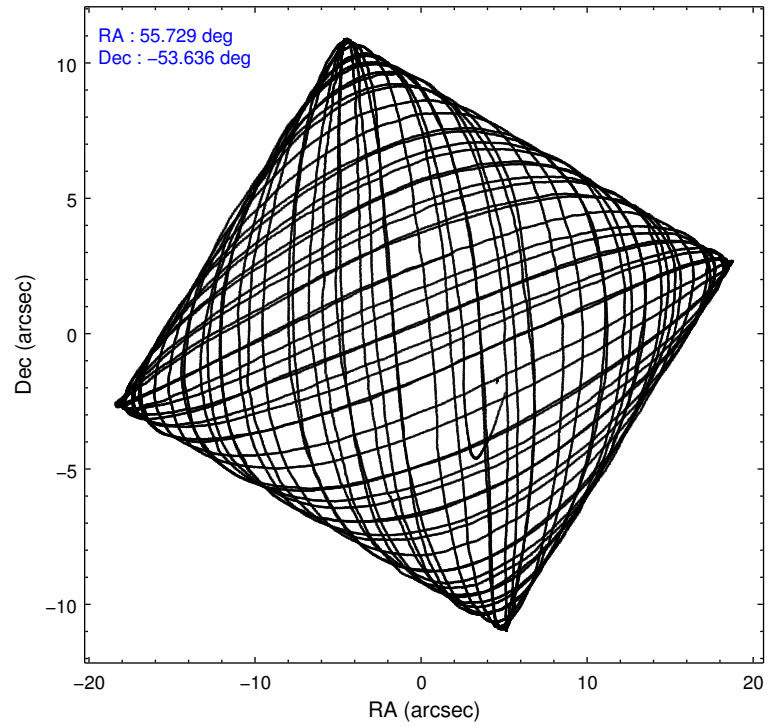
	ccd 0	ccd 1	ccd 2	ccd 3	ccd 6
level 1 events	144928	144191	193074	181885	140209
rejected events	118150	115164	133742	130653	124415
rejected %	81%	79%	69%	71%	88%

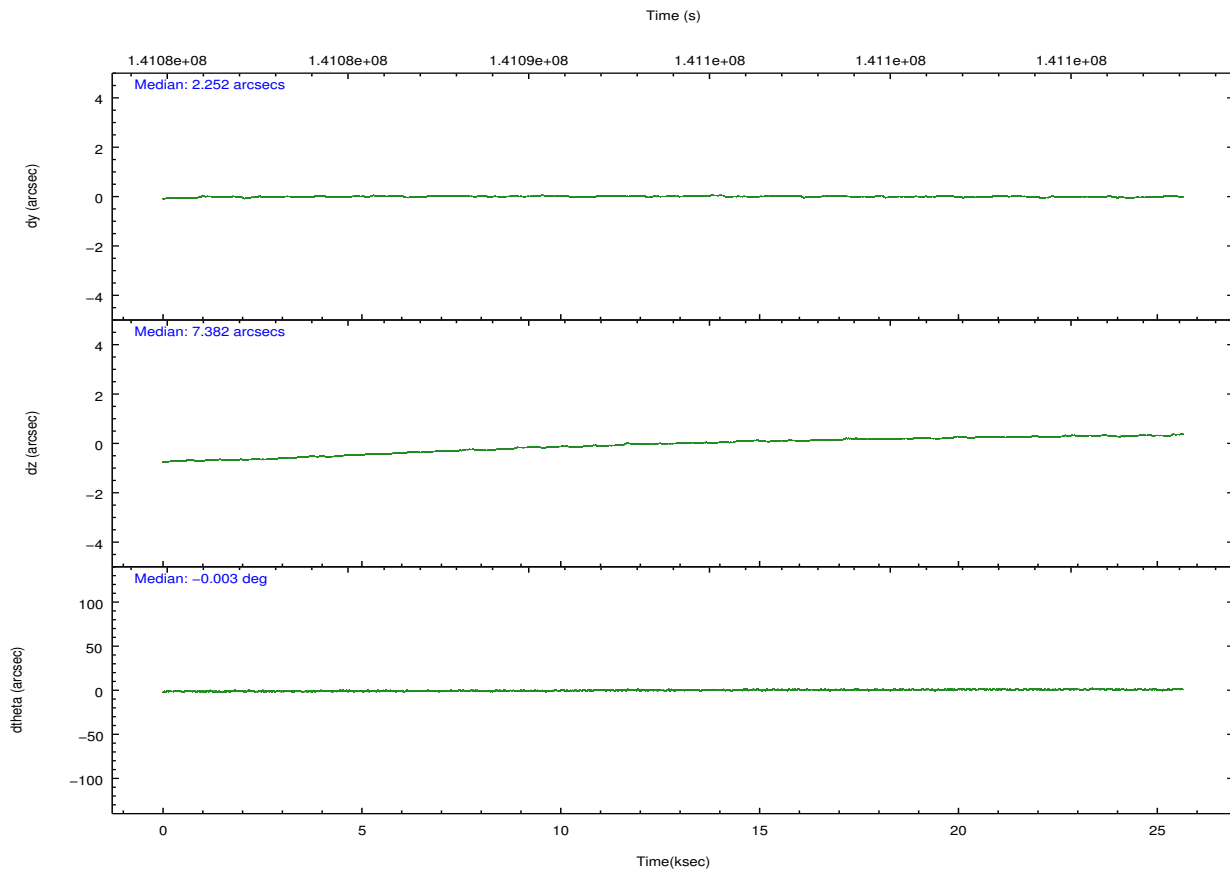
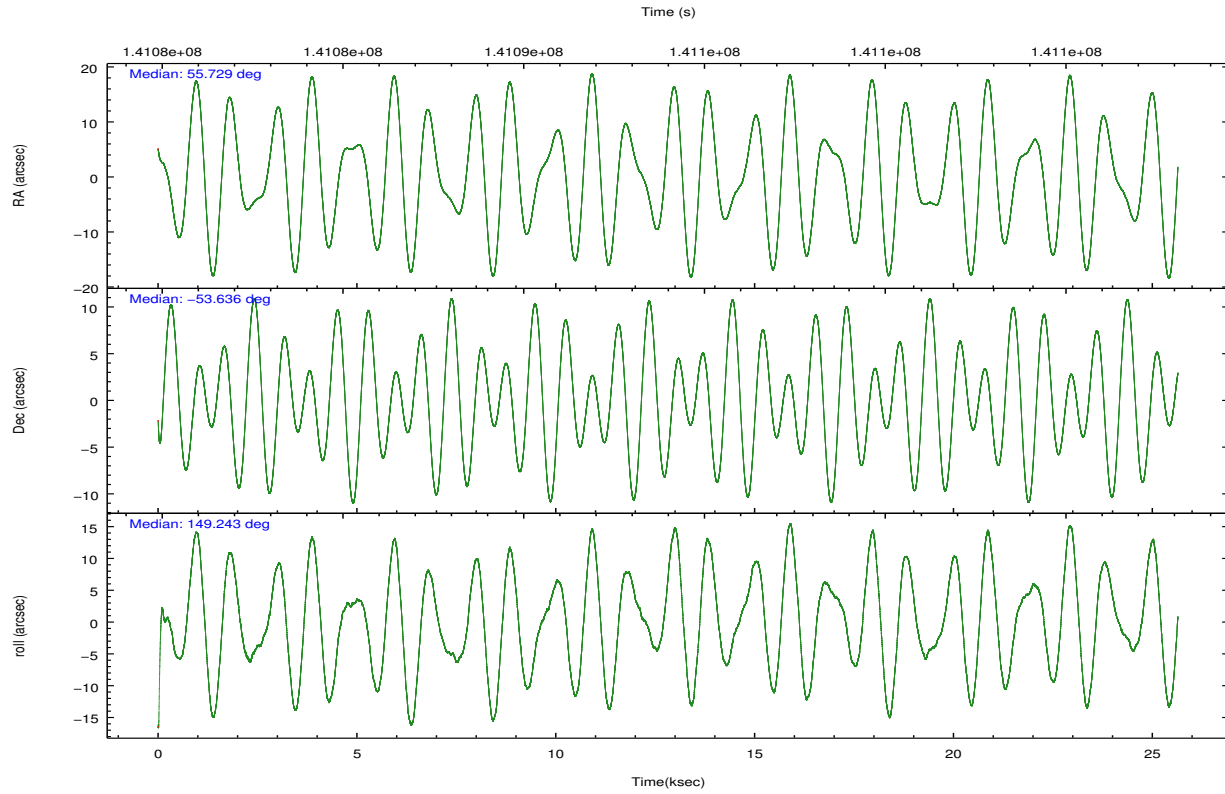
	ccd 0	ccd 1	ccd 2	ccd 3	ccd 6
grade 0 events	15450	17051	42591	35986	6387
	10%	11%	22%	19%	4%
grade 1 events	102	90	217	208	76
	0%	0%	0%	0%	0%
grade 2 events	4532	4453	7622	6537	3071
	3%	3%	3%	3%	2%
grade 3 events	1968	2067	2777	2554	1671
	1%	1%	1%	1%	1%
grade 4 events	1886	2143	2764	2570	1611
	1%	1%	1%	1%	1%
grade 5 events	4644	4991	4383	5175	5227
	3%	3%	2%	2%	3%
grade 6 events	2944	3316	3586	3591	3057
	2%	2%	1%	1%	2%
grade 7 events	113402	110080	129134	125264	119109
	78%	76%	66%	68%	84%

2.2 Compared Parameters

Parameter	Planned	Actual	Parameter	Planned	Actual
Instrument	ACIS	ACIS	Obspar format version number	7	7
Detector	ACIS-01236	ACIS-01236	Obspar file type	PREDICTED	ACTUAL
Grating	NONE	NONE	Obspar update status	NONE	UPDATED
Data mode	VFAINT	VFAINT	Number of optional ACIS chips dropped	0	0
Observation mode	POINTING	POINTING	On-chip summing requested	N	N
[deg] Pointing RA	55.775092	55.72885320783836	Subarray requested	NONE	NONE
[deg] Pointing Dec	-53.636083	-53.63580293147903	Alternating exposures requested	N	N
[deg] Pointing Roll	149.074220	149.2456661625077	[s] Primary exposure time	0.000000	3.1
[mm] SIM focus pos	-0.782348	-0.7809083437167272			
[mm] SIM defocus	0	0.001439871863259334			
[mm] SIM translation stage pos	-229.592463	-229.5871588160467			
[mm] SIM translation stage offset	-4	-4.005294186882963			
[s] Observation start time (MET)	141081813.184000	141080624.83916			
Observation start date	2002-06-21T21:22:29	2002-06-21T21:03:44			
[s] Observation end time (MET)	141106813.184000	141107171.31525			
Observation end date	2002-06-22T04:19:09	2002-06-22T04:26:11			
Read mode	TIMED	TIMED			

2.3 Aspect



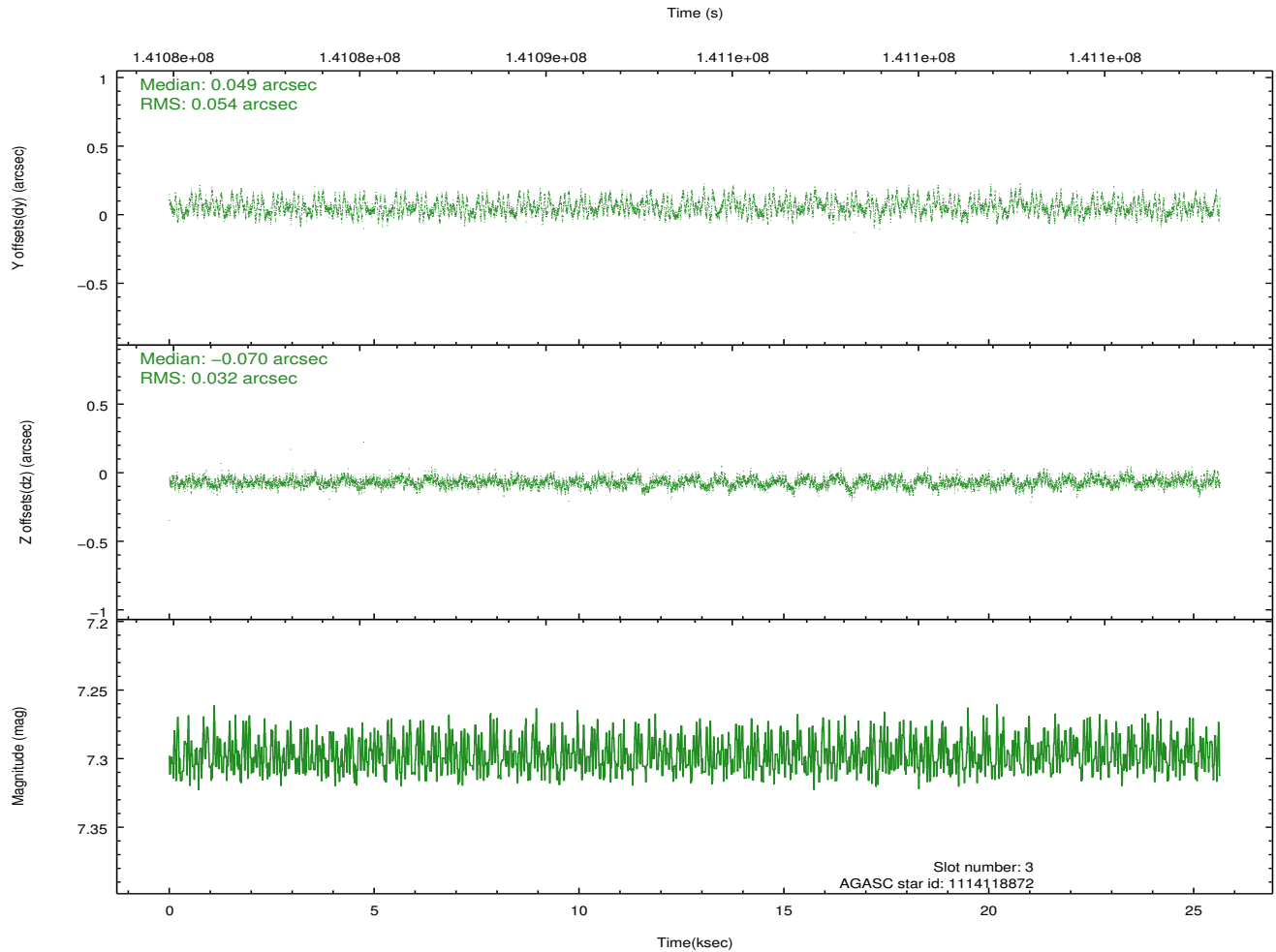
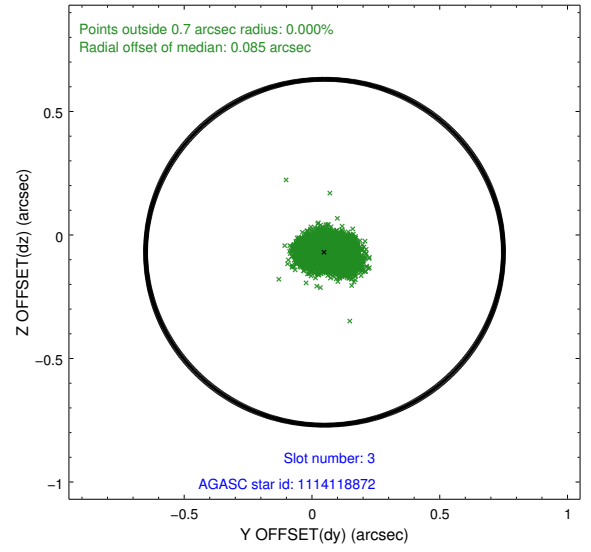
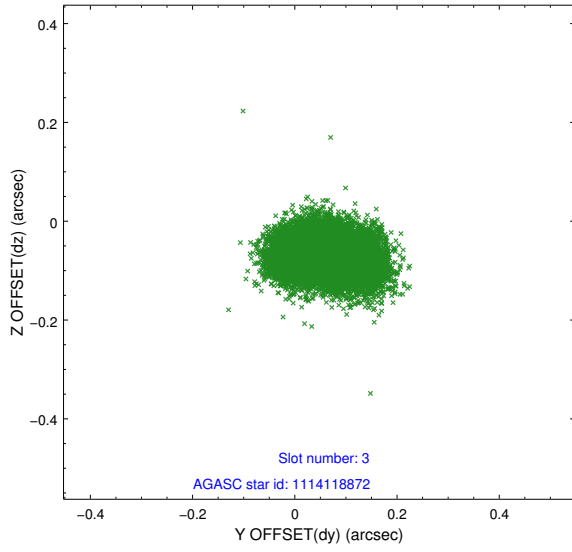


Slot Statistics

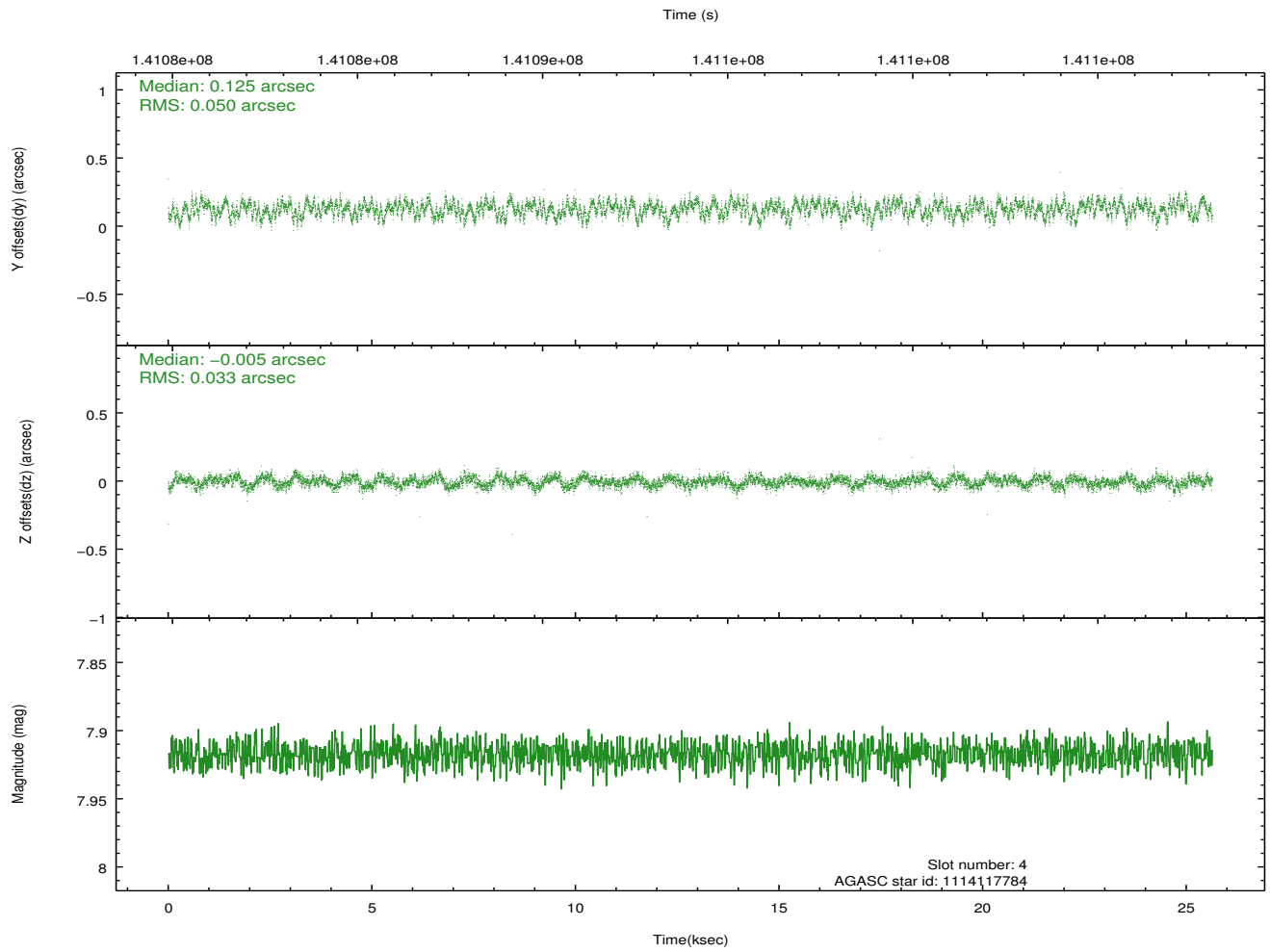
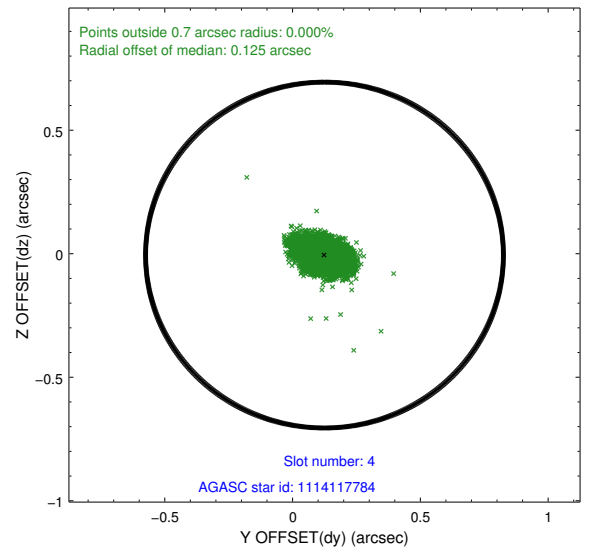
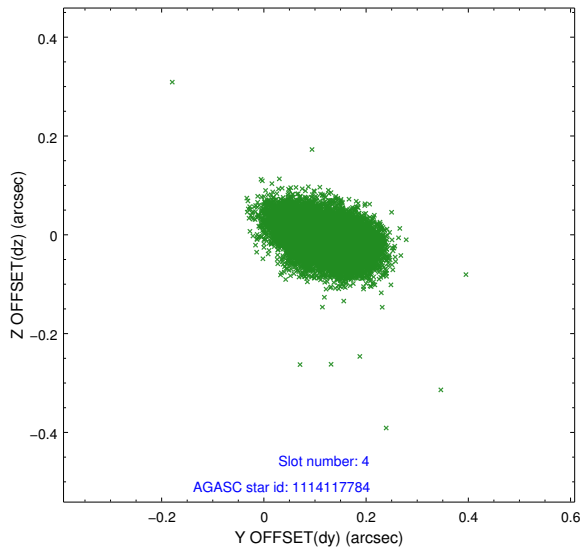
slot	status	id	mag	n_pts	med_dy	med_dz	dr1	dr2	ra	dec	mean_y	mean_z
0	FID	ACIS-I-3	7.42	6254	-0.027	0.207	0.009	0.015	0.000000	0.000000	54.89	-1045.90
1	FID	ACIS-I-5	7.24	6253	-0.107	-0.022	0.008	0.012	0.000000	0.000000	-1810.82	984.47
2	FID	ACIS-I-6	7.26	6255	0.042	-0.116	0.008	0.013	0.000000	0.000000	402.92	1629.07
3	GUIDE	1114118872	7.30	12509	0.049	-0.070	0.066	0.110	56.068532	-54.477824	-2084.30	2285.33
4	GUIDE	1114117784	7.92	12508	0.125	-0.005	0.063	0.105	56.191874	-54.166281	-1735.56	1188.85
5	GUIDE	1114120328	8.01	12508	-0.050	-0.035	0.062	0.096	55.167791	-53.738234	917.36	985.44
6	GUIDE	1114119656	9.33	12497	-0.022	0.113	0.068	0.114	55.642480	-53.276810	909.87	-961.68
7	GUIDE	1114113800	9.61	12502	-0.104	-0.000	0.120	0.204	54.861207	-53.366759	2176.07	188.60

2.4 Star Slots

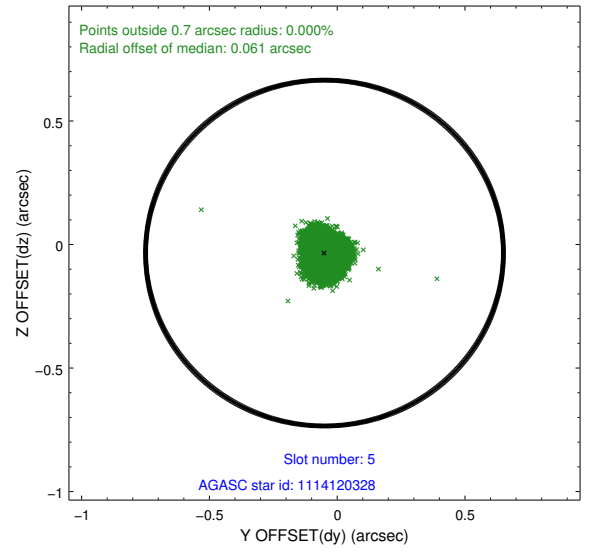
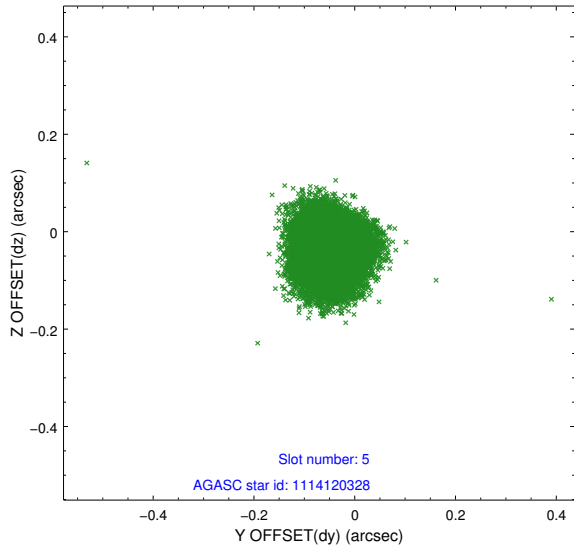
2.4.1 Slot 3



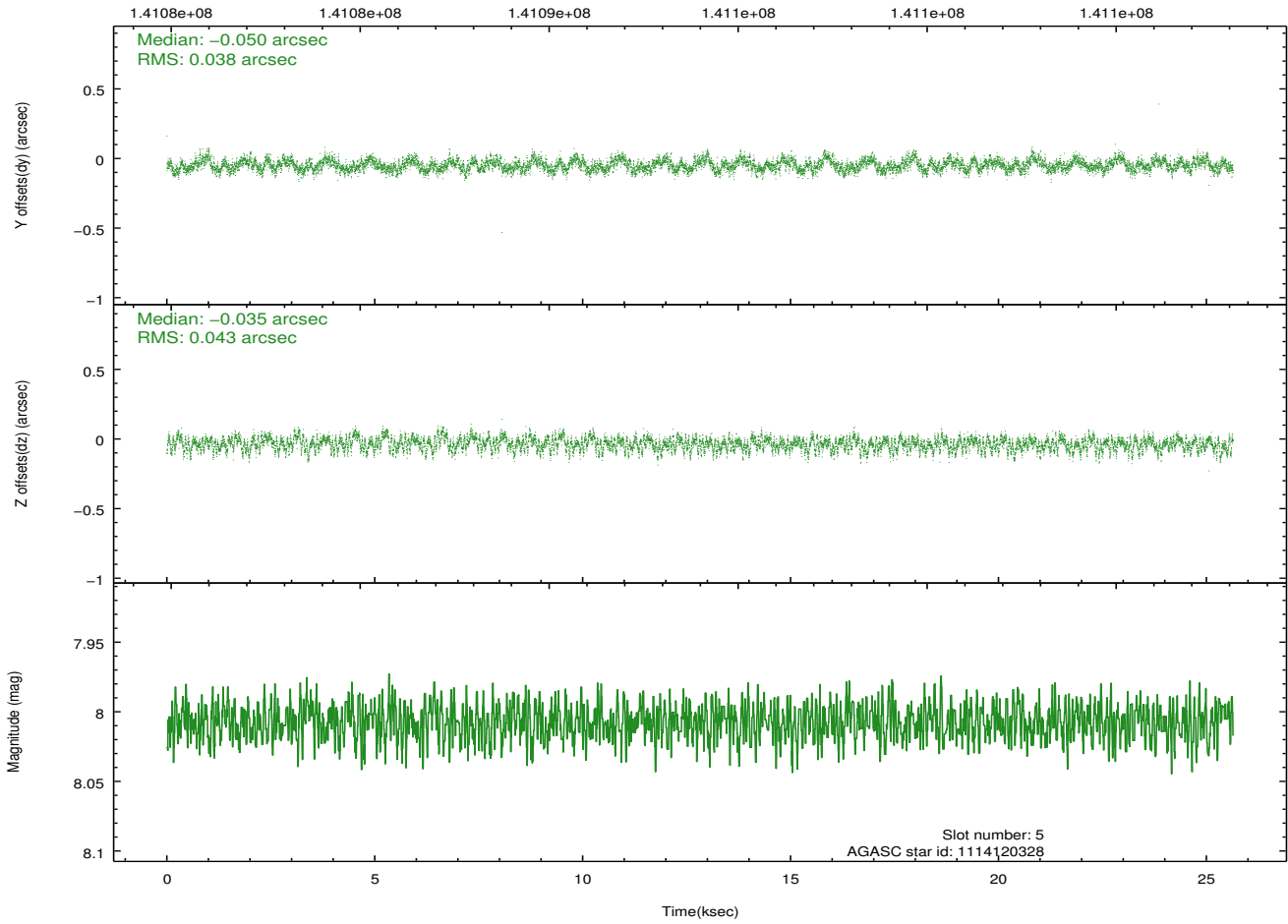
2.4.2 Slot 4



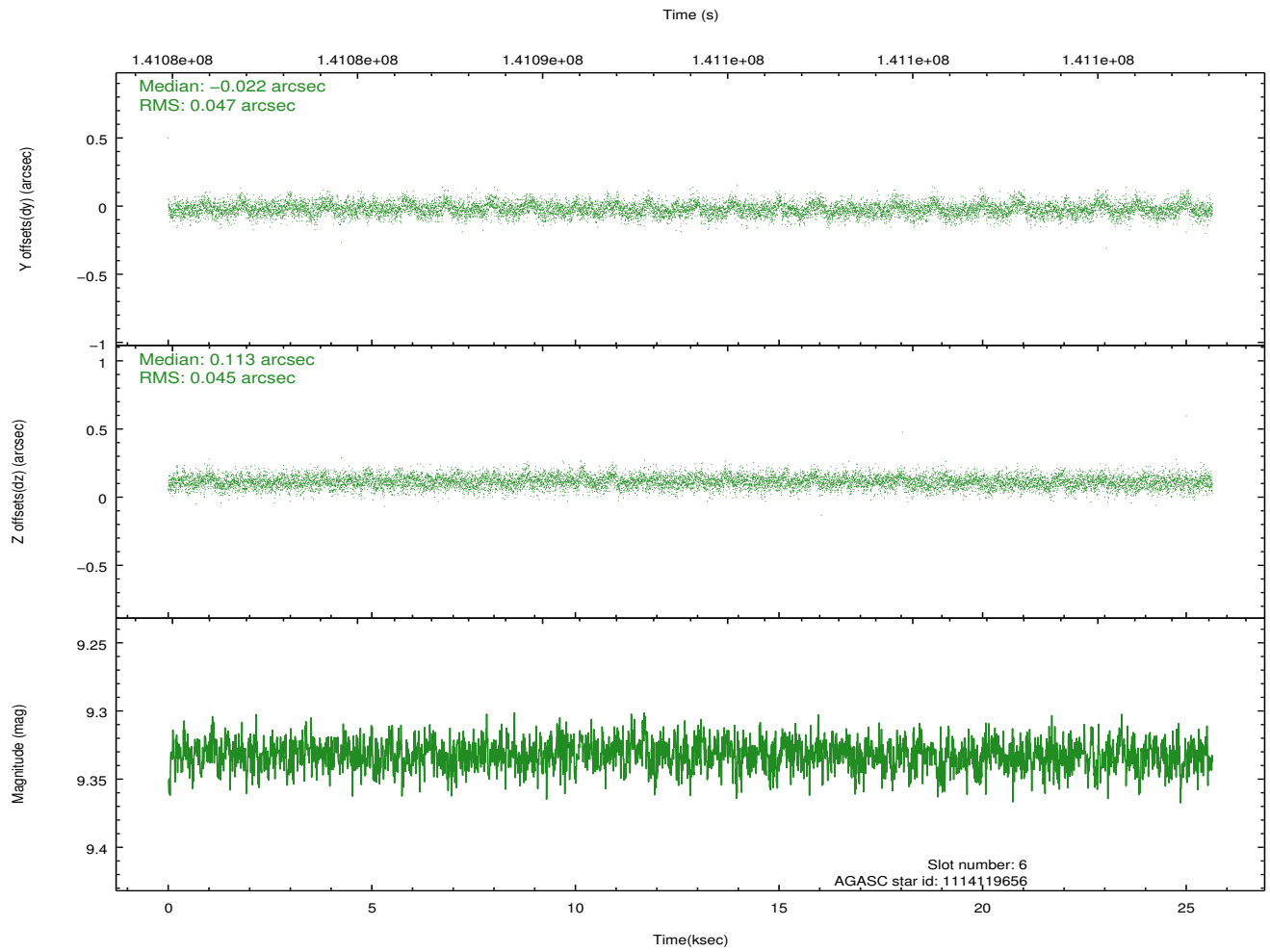
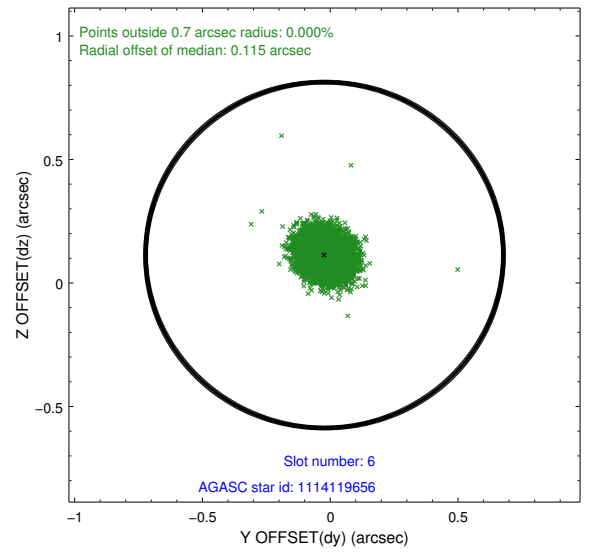
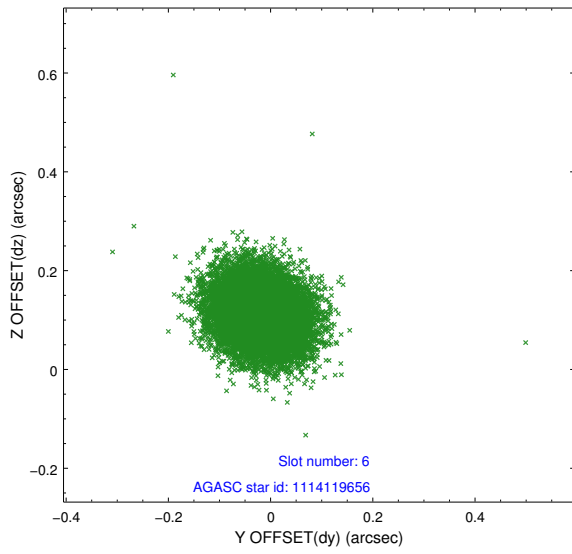
2.4.3 Slot 5



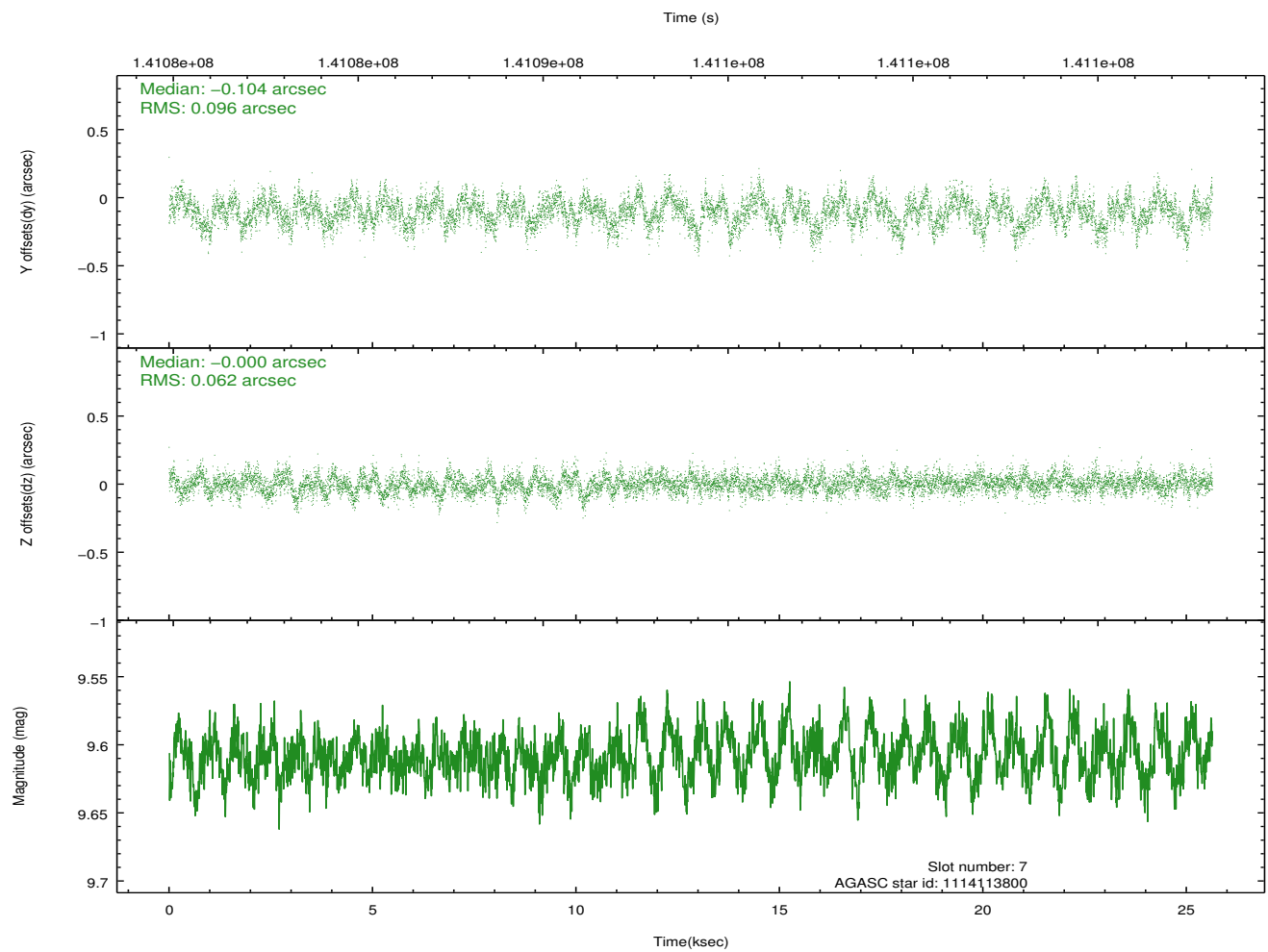
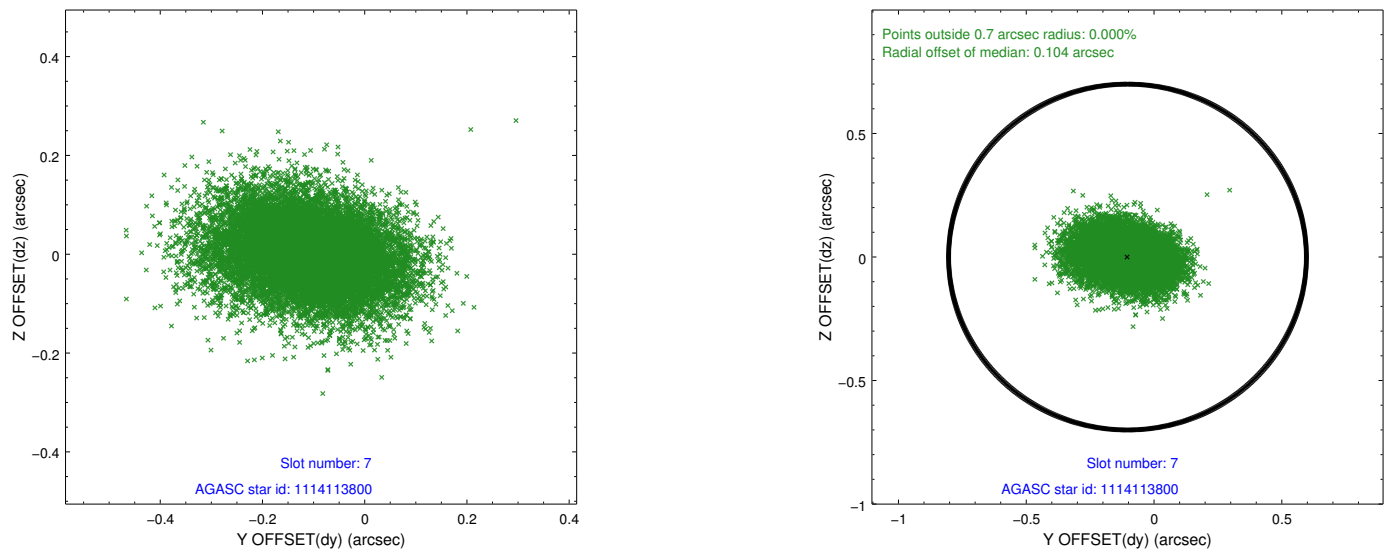
Time (s)



2.4.4 Slot 6

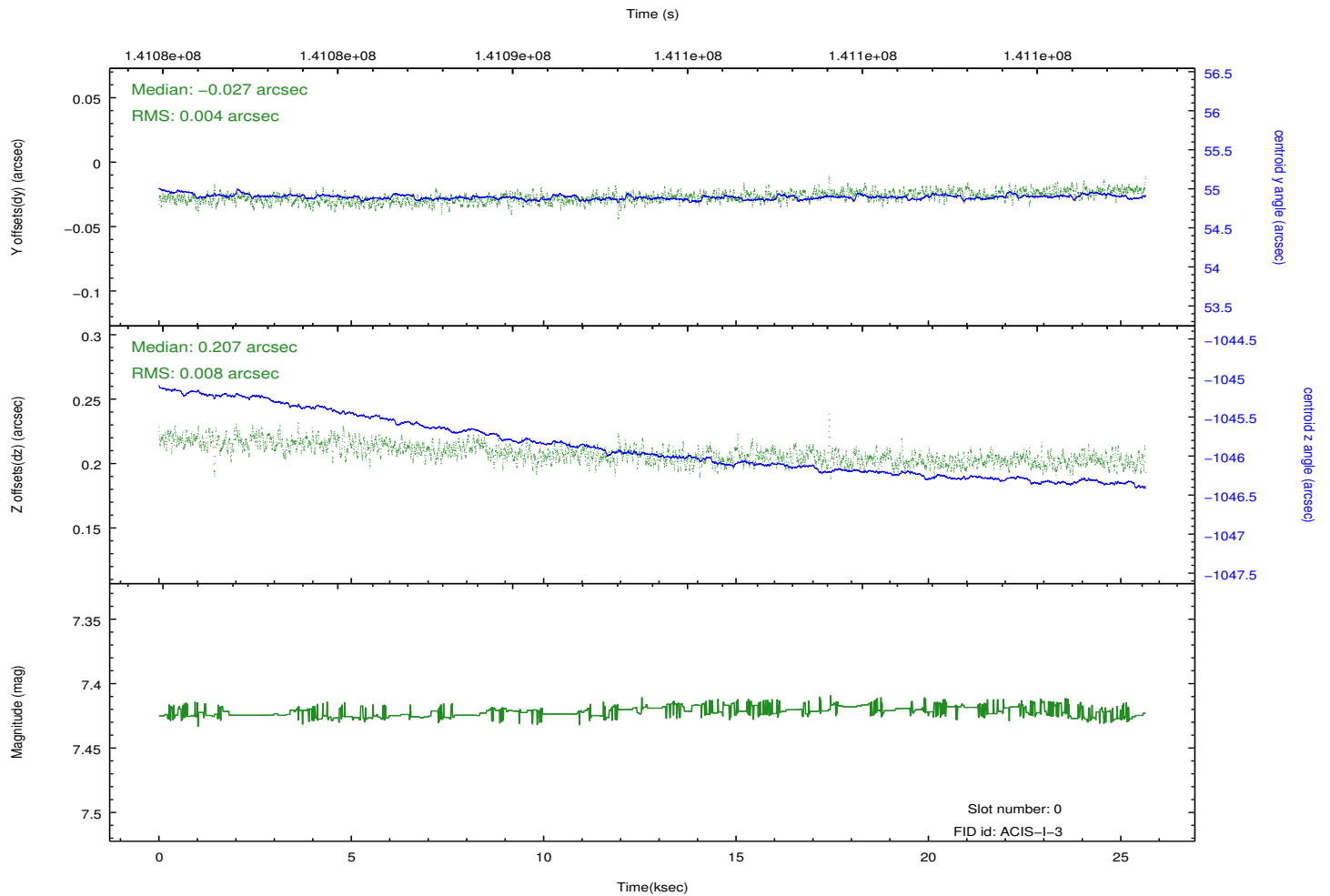
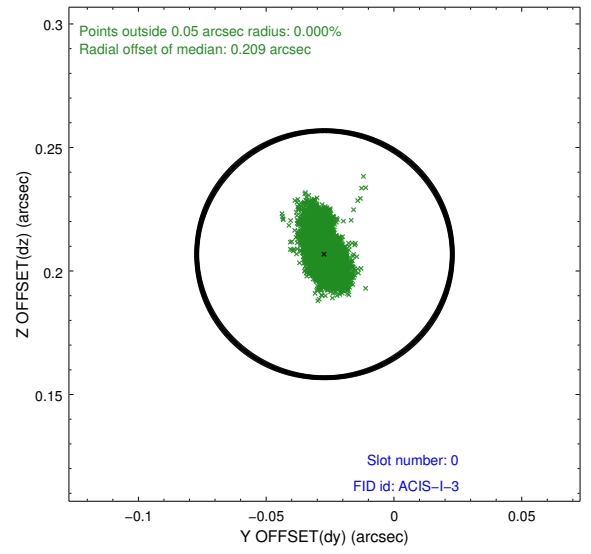
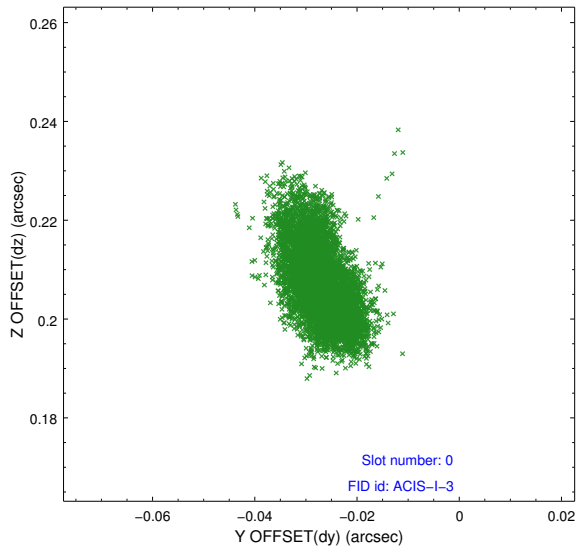


2.4.5 Slot 7

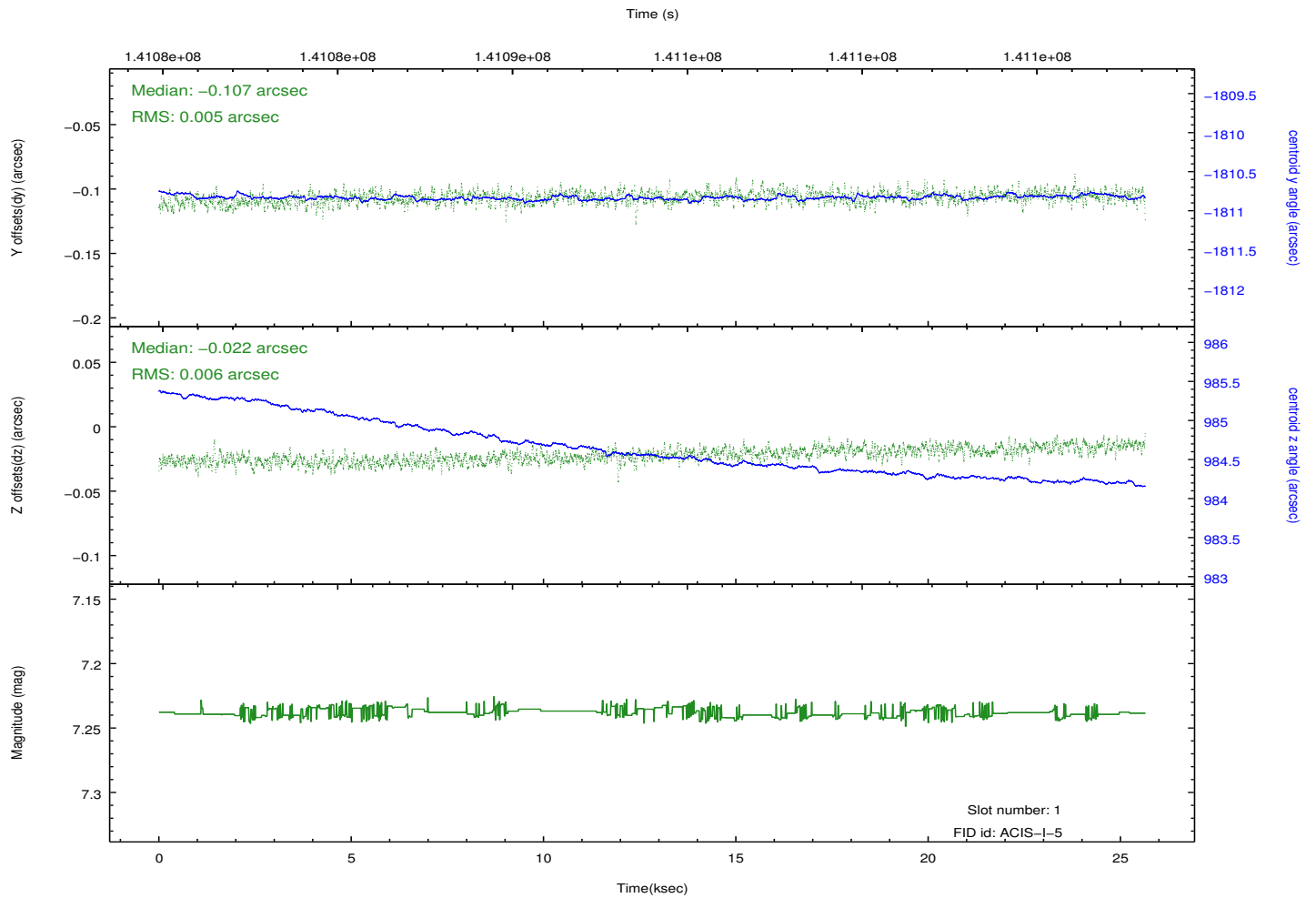
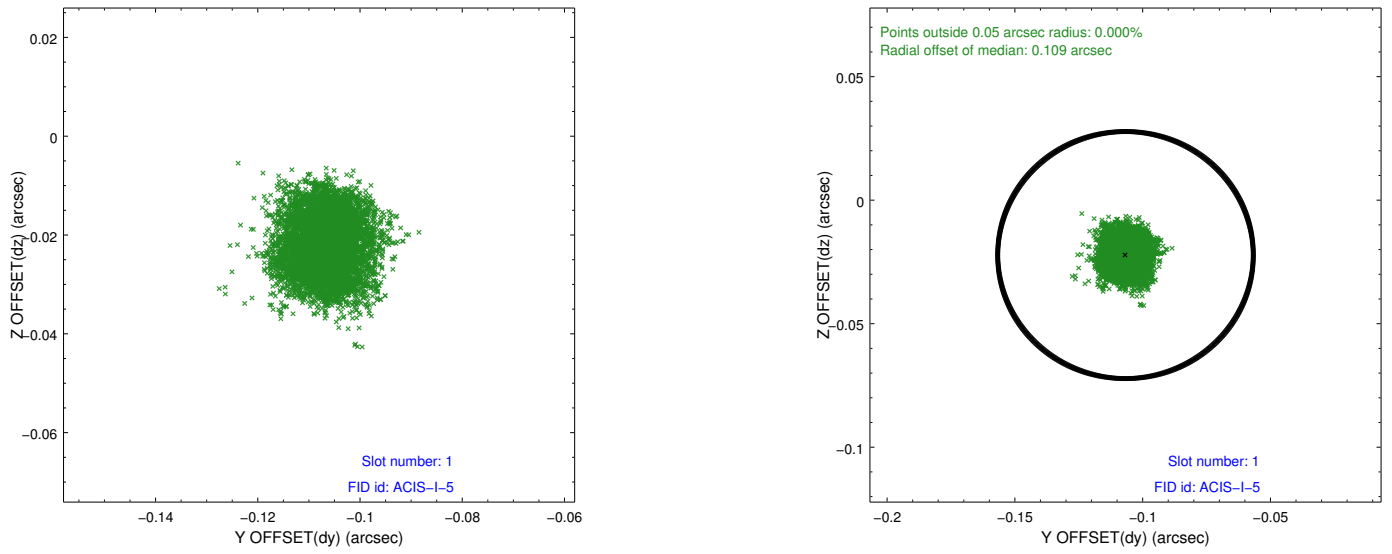


2.5 FID Slots

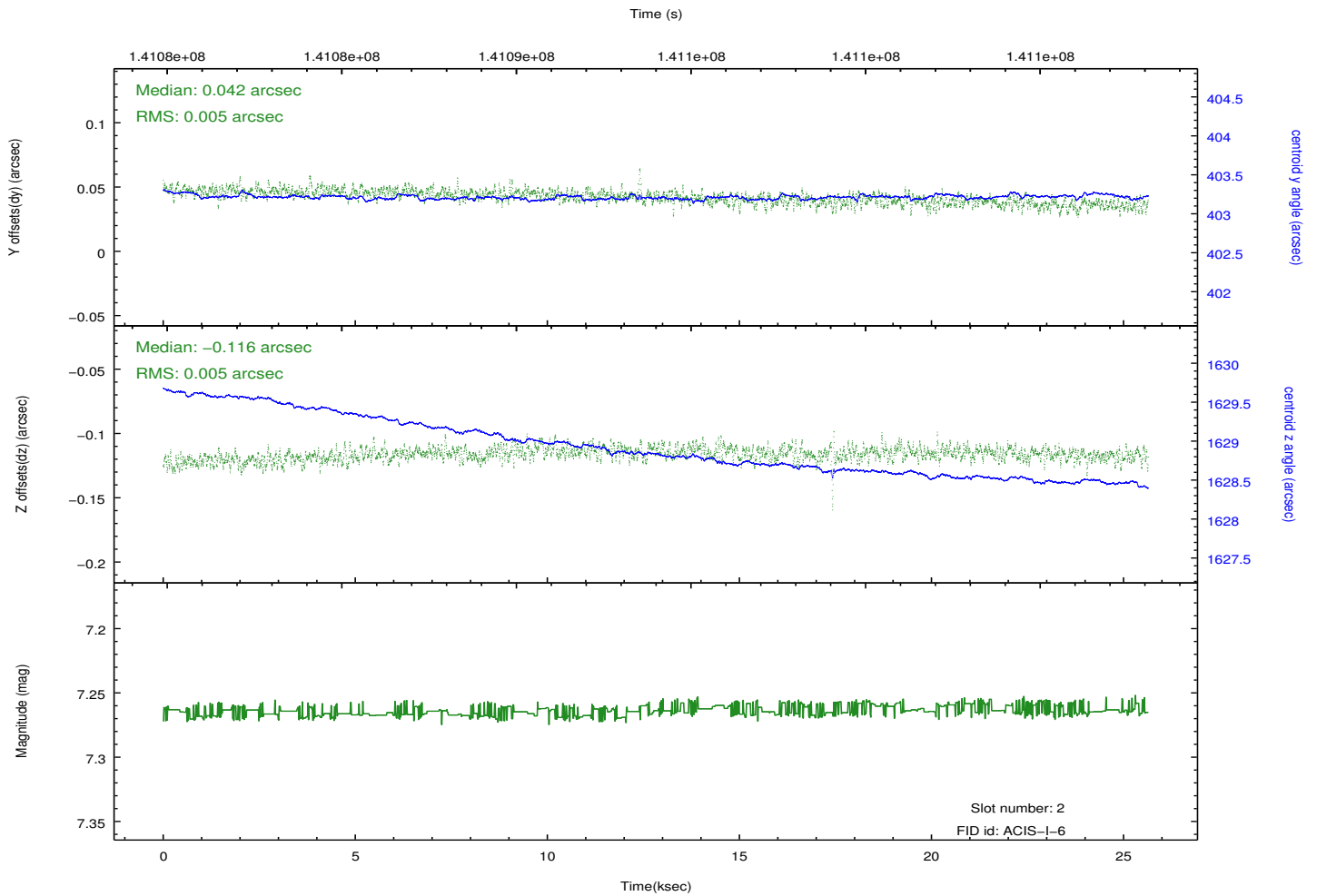
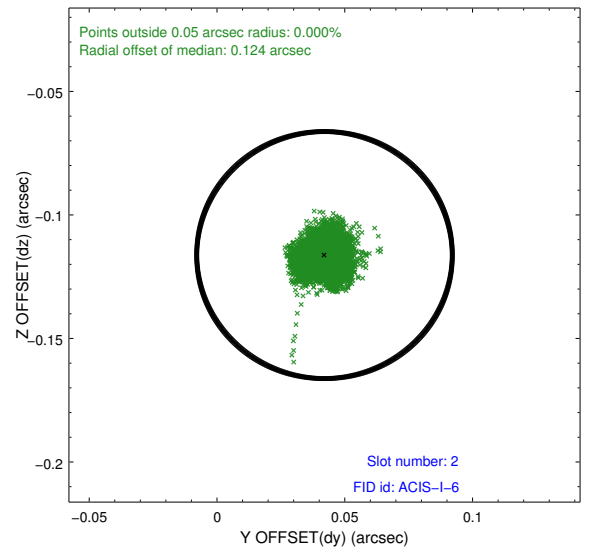
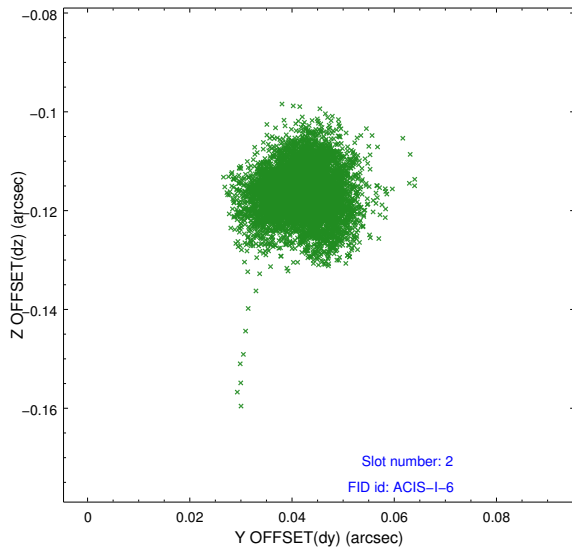
2.5.1 Slot 0



2.5.2 Slot 1



2.5.3 Slot 2



A Summary

A.1 Status

V&V Scientist	Jen Lauer
V&V Date (YYYY-MM-DD)	2012.10.19
V&V Edition	1
V&V Disposition and Status	OK
V&V Charge Time	25.116

A.2 Comments