

V&V Reference Report

L2 ASCDS Version : 8.4.5

Observation 3215 - L2 Version 3
Chandra X-Ray Center

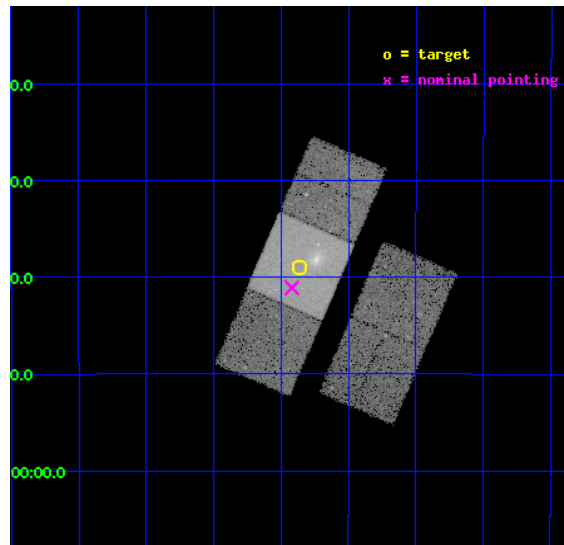
L2 Processing Date : Oct 4 2012

Contents

1	Front	2
2	OBI	3
2.1	OBI	3
2.1.1	Images	3
2.1.2	Bias	3
2.1.3	Parameters	4
2.1.4	Events	4
2.2	Compared Parameters	5
2.3	Aspect	6
2.4	Star Slots	9
2.4.1	Slot 3	9
2.4.2	Slot 4	10
2.4.3	Slot 5	11
2.4.4	Slot 6	12
2.4.5	Slot 7	13
2.5	FID Slots	14
2.5.1	Slot 0	14
2.5.2	Slot 1	15
2.5.3	Slot 2	16
A	Summary	17
A.1	Status	17
A.2	Comments	17

1 Front

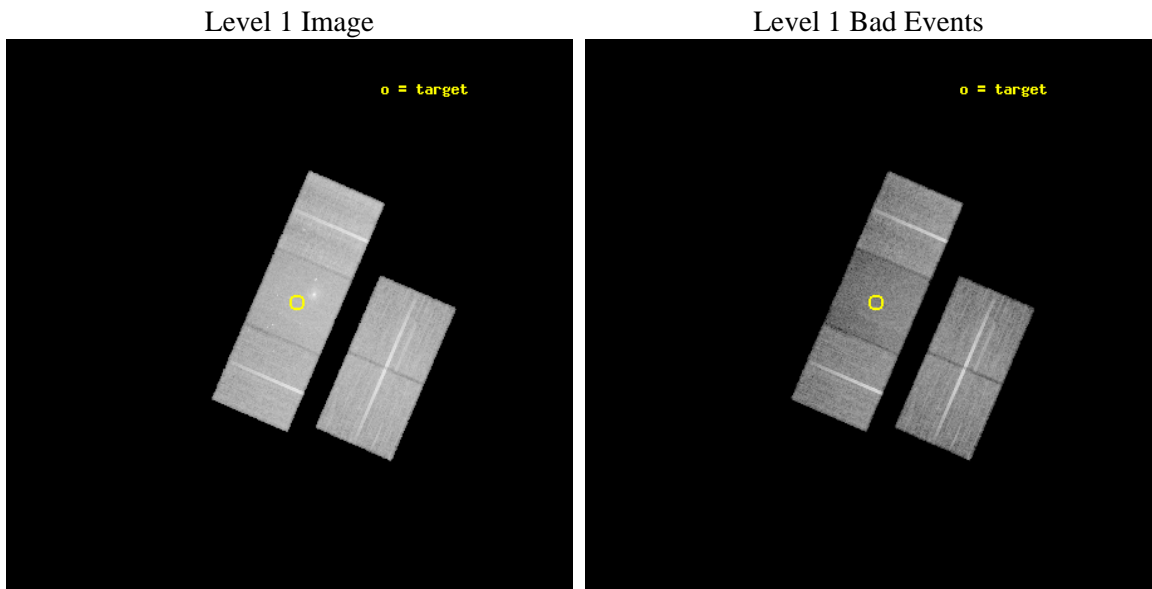
seq_num	800215	Sequence number
obs_id	3215	Observation id
title	EARLY-TYPE GALAXIES IN GROUPS: STRIPPING AND STIFLING	Proposal tit
observer	Prof Trevor Ponman	Principal investigator
object	HCG 42	Source name
dtcycle	0	
cycle	P	events from which exps? Prim/Second/Both
ra_targ	150.090833	Observer's specified target RA [deg]
dec_targ	-19.65	Observer's specified target Dec [deg]
ra_nom	150.10479814464	Nominal RA [deg]
dec_nom	-19.685033735326	Nominal Dec [deg]
roll_nom	293.32937519393	Nominal Roll [deg]
revision	3	Processing version of data
ontime	32105.713670239	Sum of GTIs [s]
livetime	31686.228885255	Livetime [s]
ontime2	32099.267529845	Sum of GTIs [s]
ontime3	32099.349639729	Sum of GTIs [s]
ontime6	32105.672630236	Sum of GTIs [s]
ontime7	32105.713670239	Sum of GTIs [s]
ontime8	32105.590550244	Sum of GTIs [s]
l2events	144758	Number of level 2 events



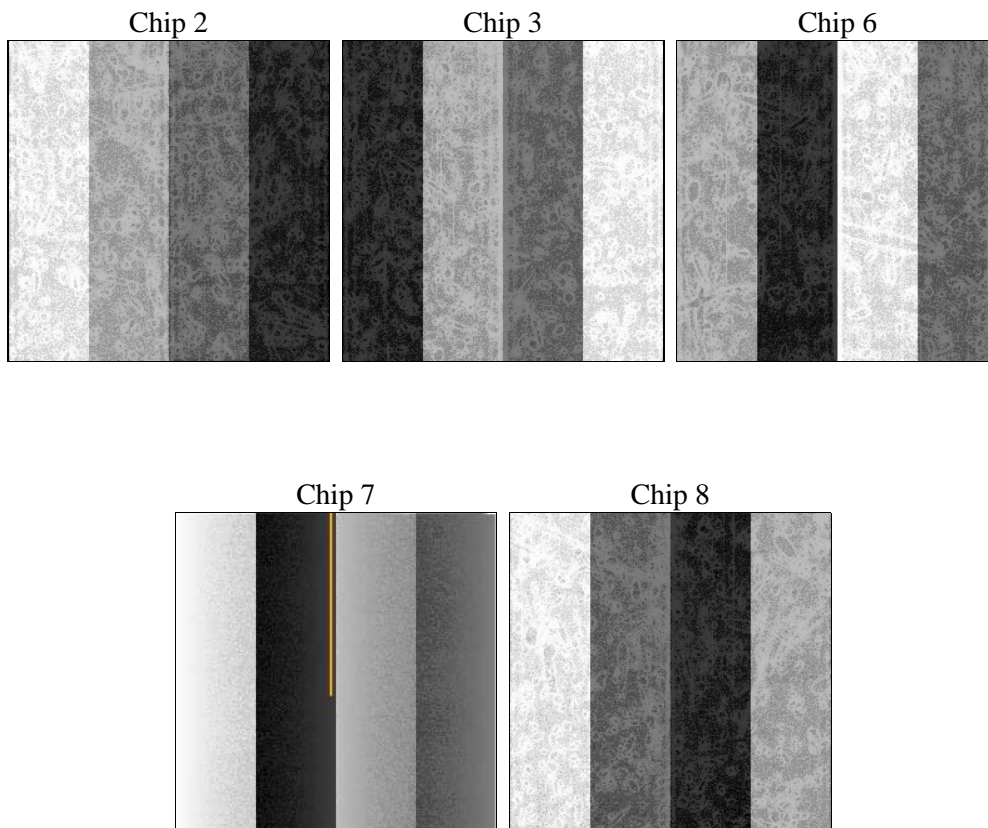
2 OBI

2.1 OBI

2.1.1 Images



2.1.2 Bias



2.1.3 Parameters

obi_num	0	Obi number	sched_exp_time	32000.000000	[s] Scheduled observation exposure time
ascdsver	8.4.5	Processing system revision	ontime	32105.713670239	Sum of GTIs [s]
caldbver	4.5.2	 	ontime2	32099.267529845	Sum of GTIs [s]
date	2012-10-04T13:40:08	Date and time of file creation	ontime3	32099.349639729	Sum of GTIs [s]
revision	3	Processing version of data	ontime6	32105.672630236	Sum of GTIs [s]
			ontime7	32105.713670239	Sum of GTIs [s]
			ontime8	32105.590550244	Sum of GTIs [s]
			l1events	882636	Number of level 1 events

2.1.4 Events

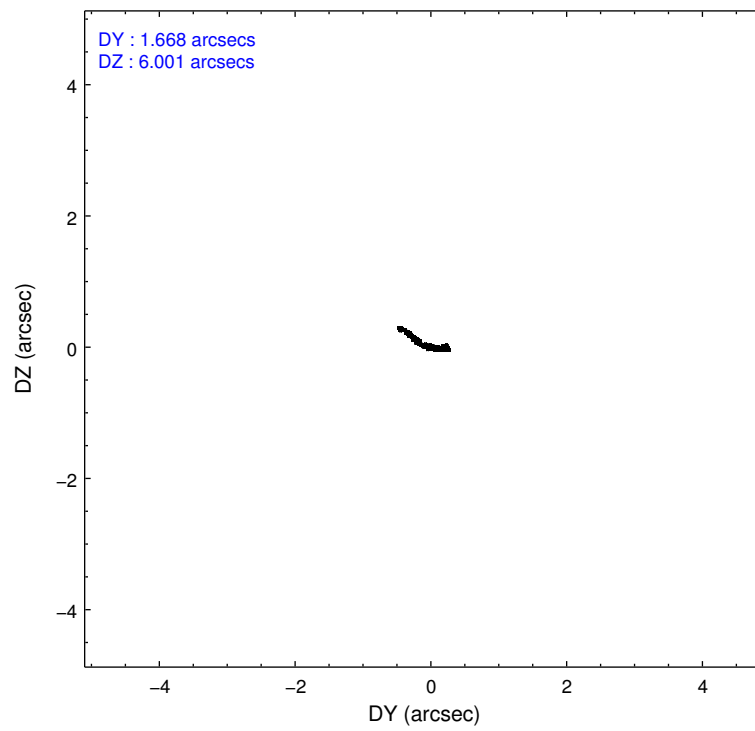
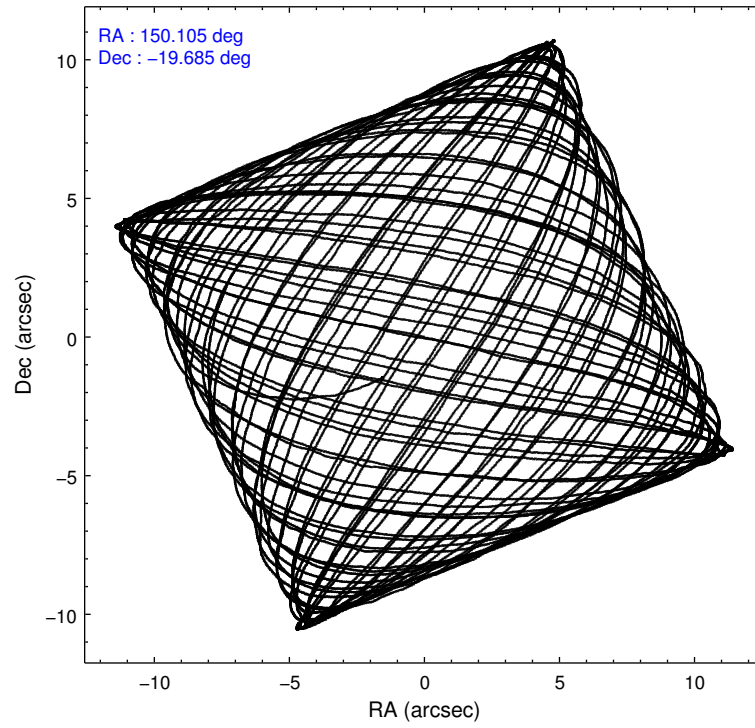
	ccd 2	ccd 3	ccd 6	ccd 7	ccd 8
level 1 events	164676	162026	165272	183876	206786
rejected events	149234	147068	147942	95160	158883
rejected %	90%	90%	89%	51%	76%

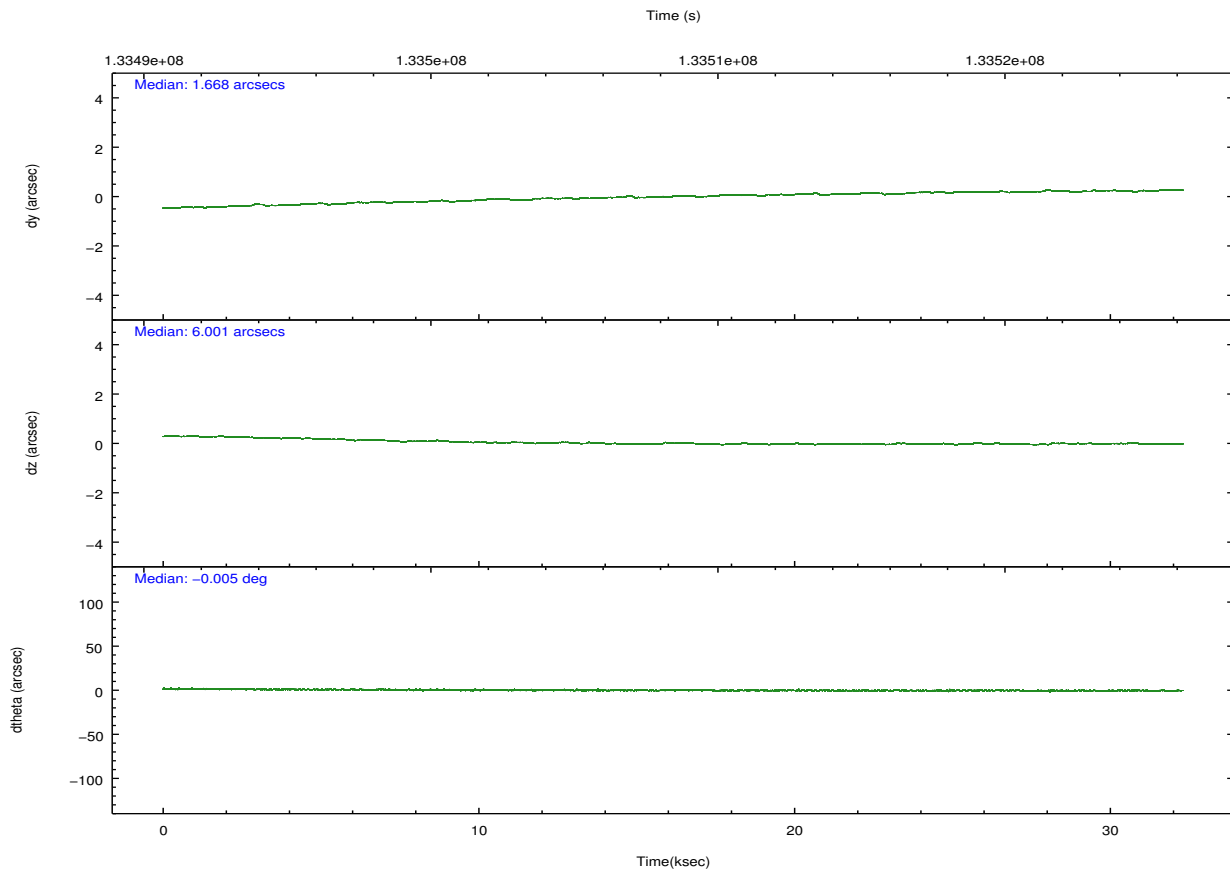
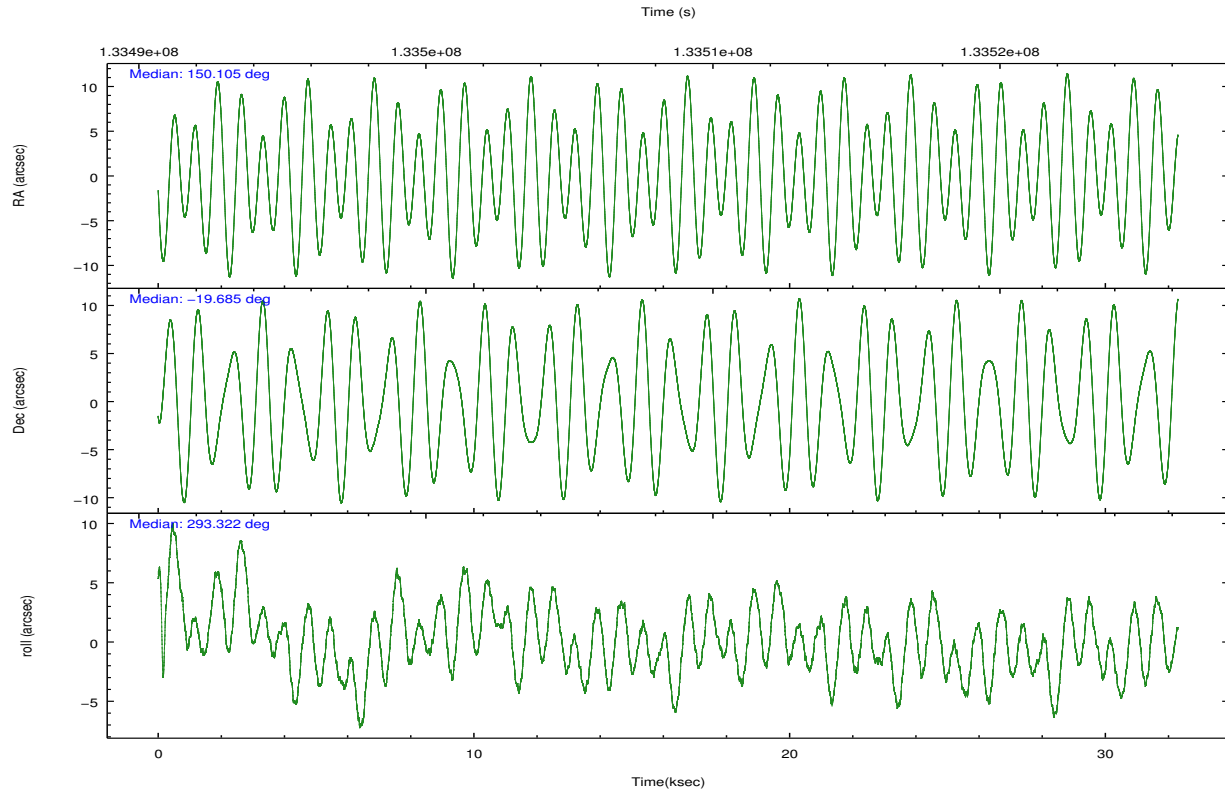
	ccd 2	ccd 3	ccd 6	ccd 7	ccd 8
grade 0 events	5608	5410	6428	10982	15416
	3%	3%	3%	5%	7%
grade 1 events	56	57	68	133	151
	0%	0%	0%	0%	0%
grade 2 events	3497	3096	3594	18403	9796
	2%	1%	2%	10%	4%
grade 3 events	1769	1750	1928	8989	5664
	1%	1%	1%	4%	2%
grade 4 events	1743	1642	1885	8844	5280
	1%	1%	1%	4%	2%
grade 5 events	4879	5713	6426	18324	8623
	2%	3%	3%	9%	4%
grade 6 events	2827	3062	3498	41510	11753
	1%	1%	2%	22%	5%
grade 7 events	144297	141296	141445	76691	150103
	87%	87%	85%	41%	72%

2.2 Compared Parameters

Parameter	Planned	Actual	Parameter	Planned	Actual
Instrument	ACIS	ACIS	Obspar format version number	7	7
Detector	ACIS-23678	ACIS-23678	Obspar file type	PREDICTED	ACTUAL
Grating	NONE	NONE	Obspar update status	NONE	UPDATED
Data mode	VFAINT	VFAINT	Number of optional ACIS chips dropped	0	0
Observation mode	POINTING	POINTING	On-chip summing requested	N	N
[deg] Pointing RA	150.081384	150.1047981446411	Subarray requested	NONE	NONE
[deg] Pointing Dec	-19.669037	-19.68503373532584	Alternating exposures requested	N	N
[deg] Pointing Roll	293.164859	293.3293751939304	[s] Primary exposure time	0.000000	3.1
[mm] SIM focus pos	-0.684267	-0.6828225247311905			
[mm] SIM defocus	0	0.001444936568705701			
[mm] SIM translation stage pos	-190.132523	-190.1400660498719			
[mm] SIM translation stage offset	0	0.00754346686406393			
[s] Observation start time (MET)	133492586.184000	133491572.19237			
Observation start date	2002-03-26T01:15:22	2002-03-26T00:59:32			
[s] Observation end time (MET)	133524586.184000	133525027.16873			
Observation end date	2002-03-26T10:08:42	2002-03-26T10:17:07			
Read mode	TIMED	TIMED			

2.3 Aspect



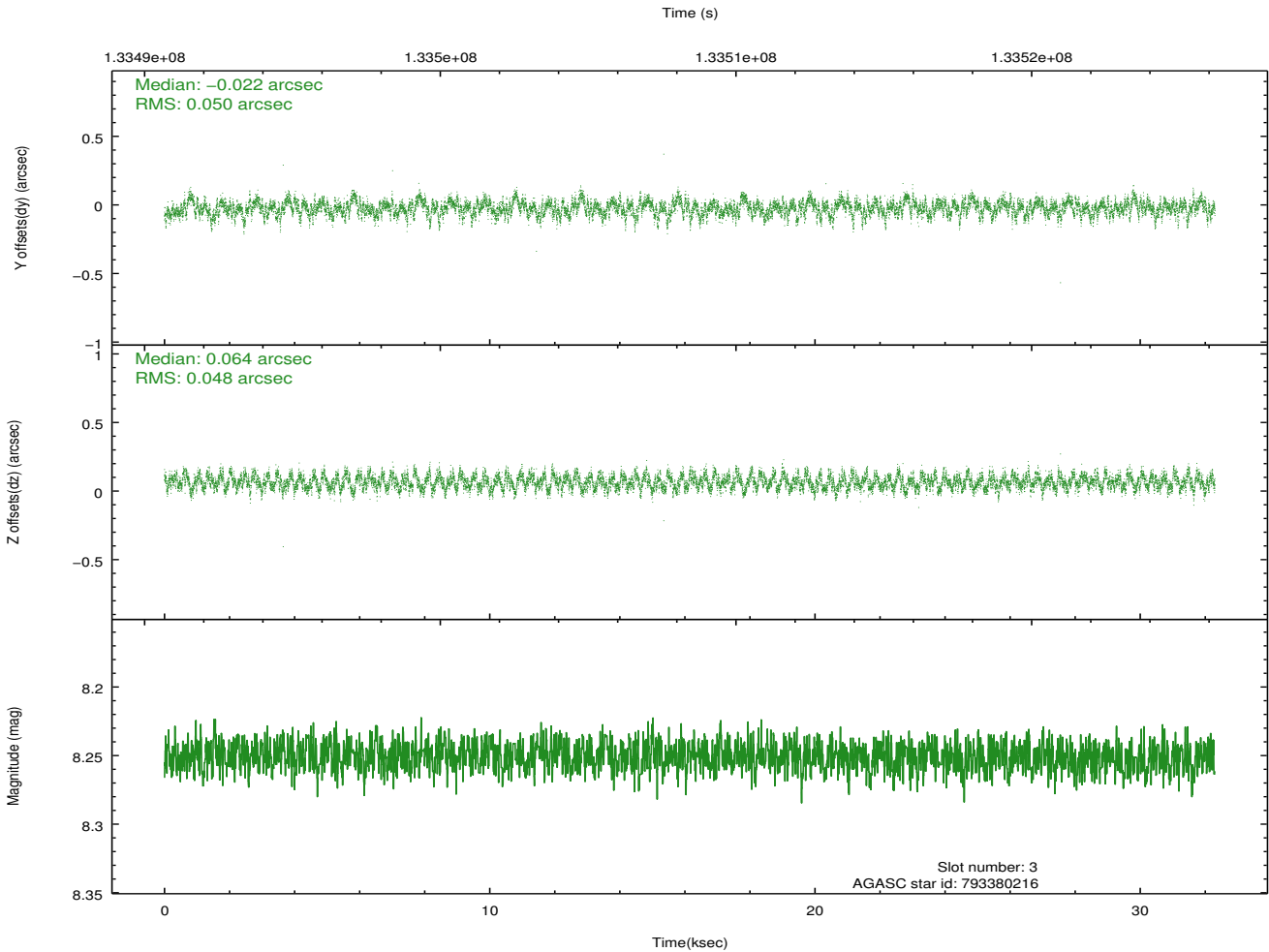
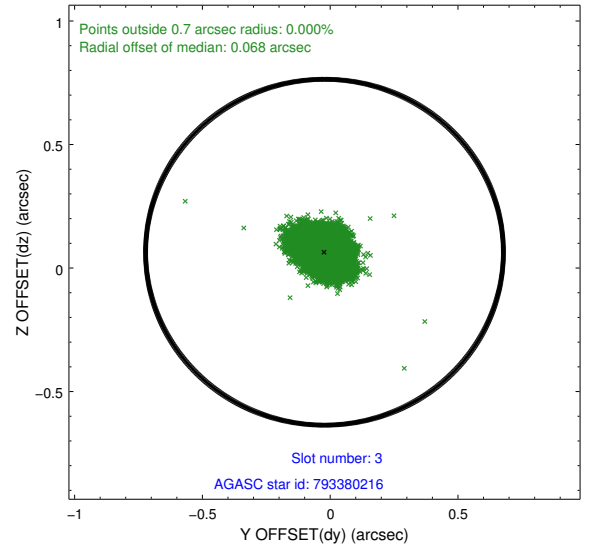
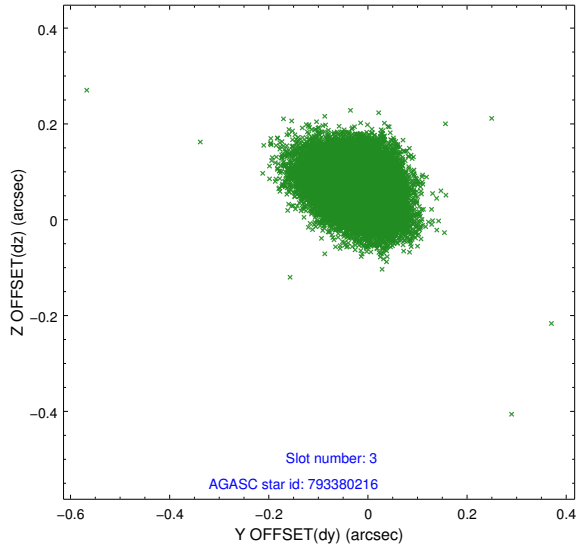


Slot Statistics

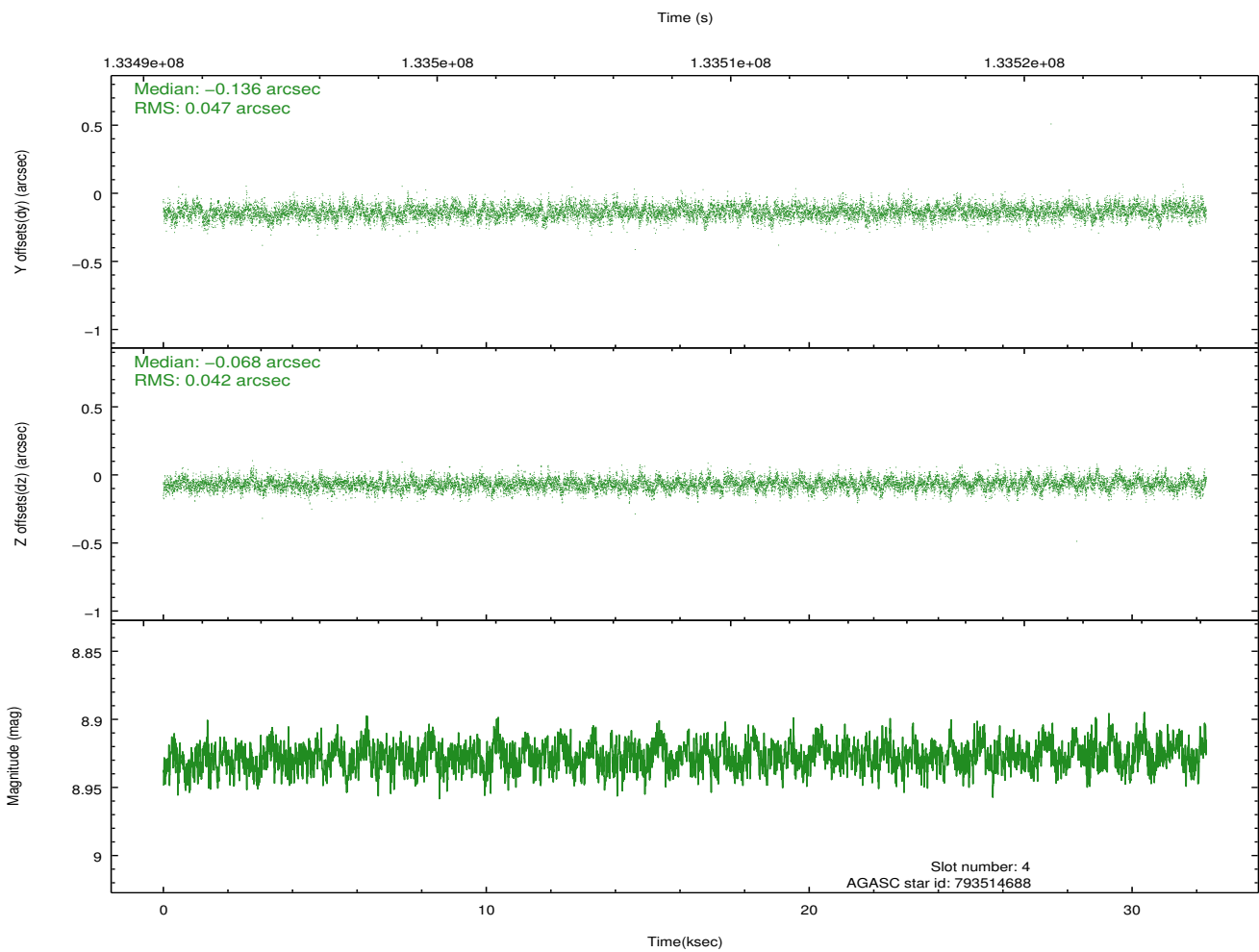
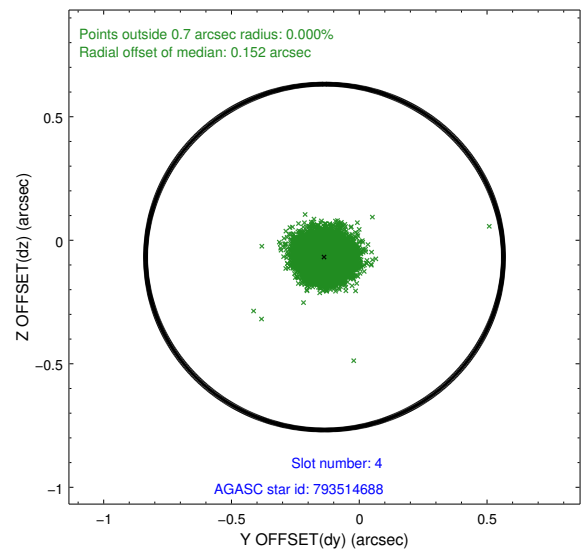
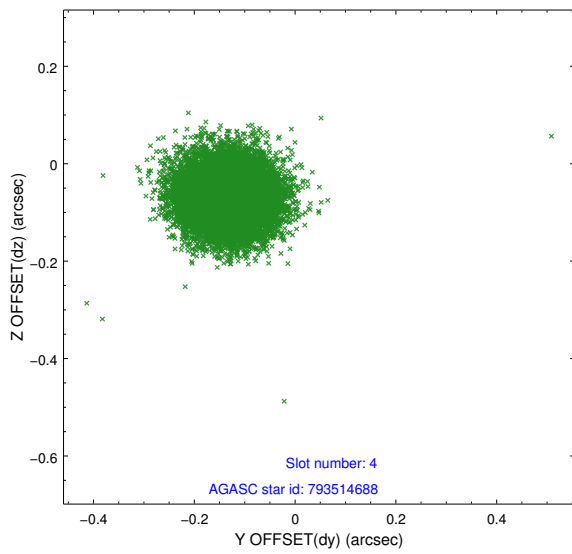
slot	status	id	mag	n_pts	med_dy	med_dz	dr1	dr2	ra	dec	mean_y	mean_z
0	FID	ACIS-S-2	7.12	7878	-0.050	0.006	0.007	0.011	0.000000	0.000000	-754.25	-1727.20
1	FID	ACIS-S-4	7.21	7878	-0.017	0.023	0.006	0.010	0.000000	0.000000	2158.99	181.31
2	FID	ACIS-S-5	7.24	7878	0.036	-0.020	0.007	0.011	0.000000	0.000000	-1806.97	174.91
3	GUIDE	793380216	8.25	15756	-0.022	0.064	0.073	0.118	149.824574	-20.173187	1328.68	-1511.34
4	GUIDE	793514688	8.93	15754	-0.136	-0.068	0.066	0.109	150.387438	-20.266780	2386.49	104.24
5	GUIDE	793517464	9.18	15748	0.008	0.083	0.096	0.158	150.334473	-19.673349	353.05	783.19
6	GUIDE	793389248	9.61	15745	0.009	-0.054	0.116	0.188	149.607484	-20.291545	1434.02	-2352.75
7	GUIDE	793380208	9.92	15741	0.146	-0.023	0.143	0.231	149.955204	-20.174015	1504.87	-1106.51

2.4 Star Slots

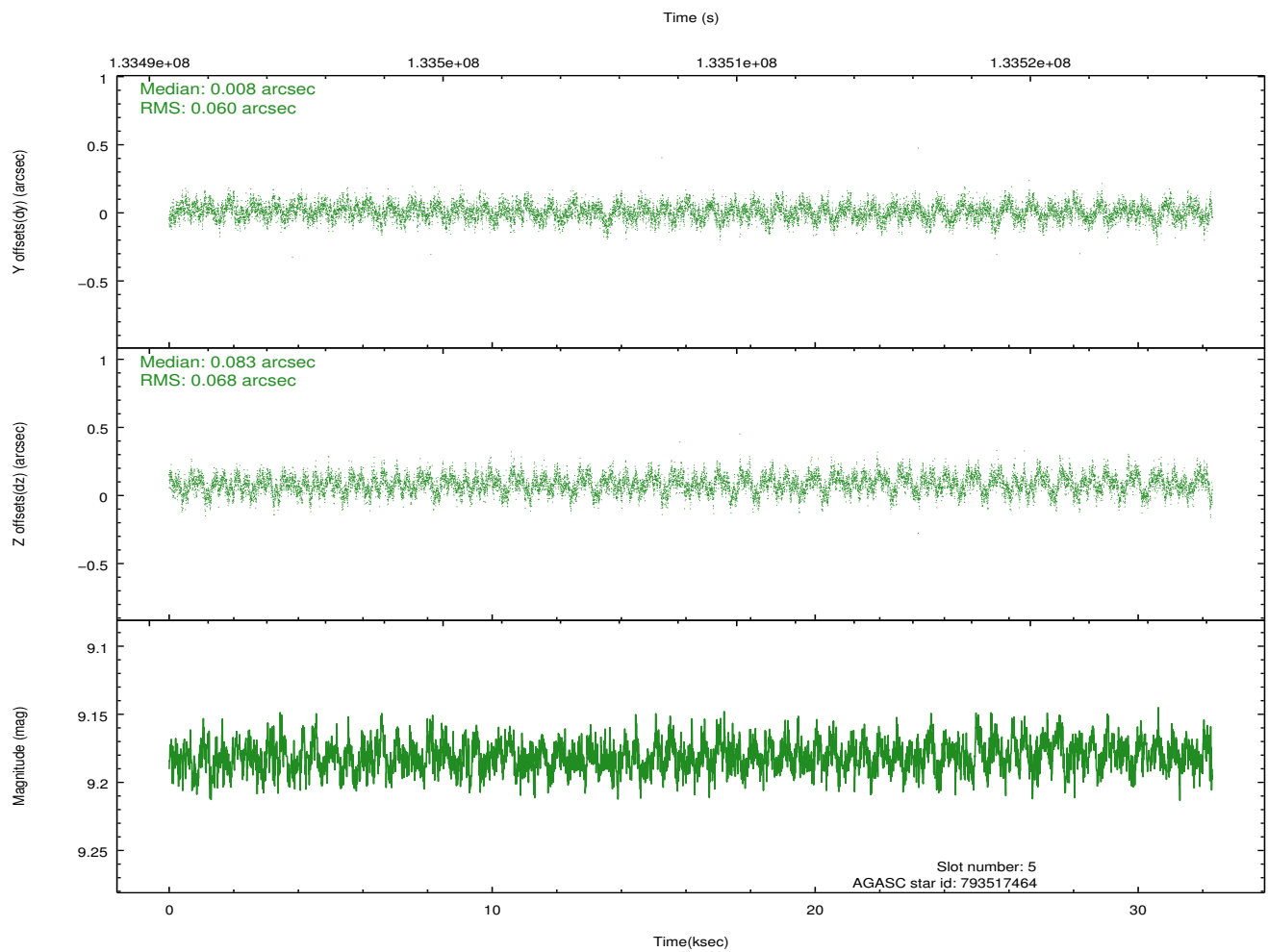
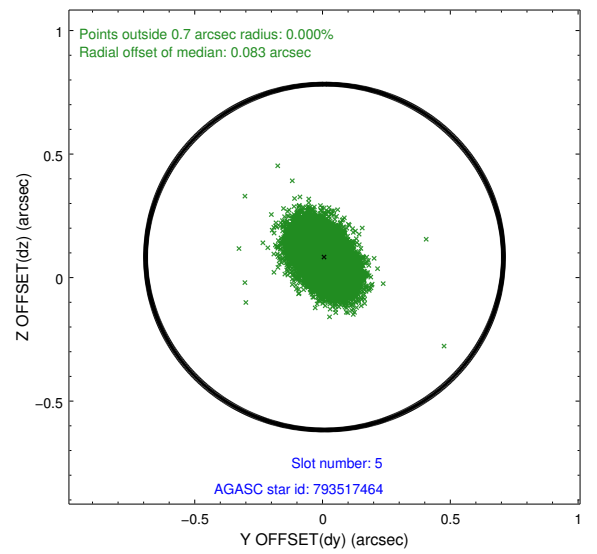
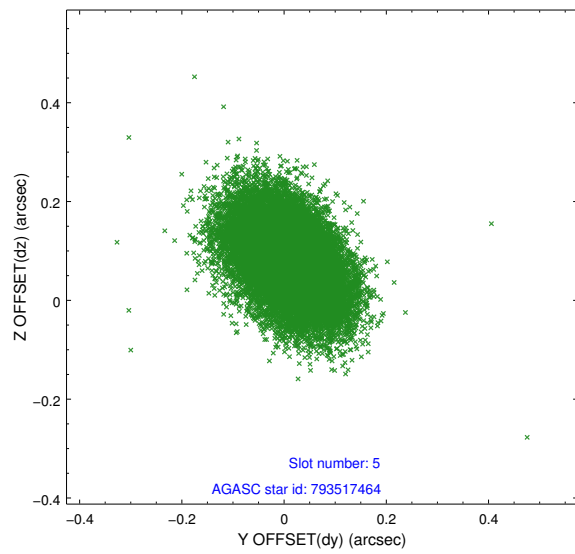
2.4.1 Slot 3



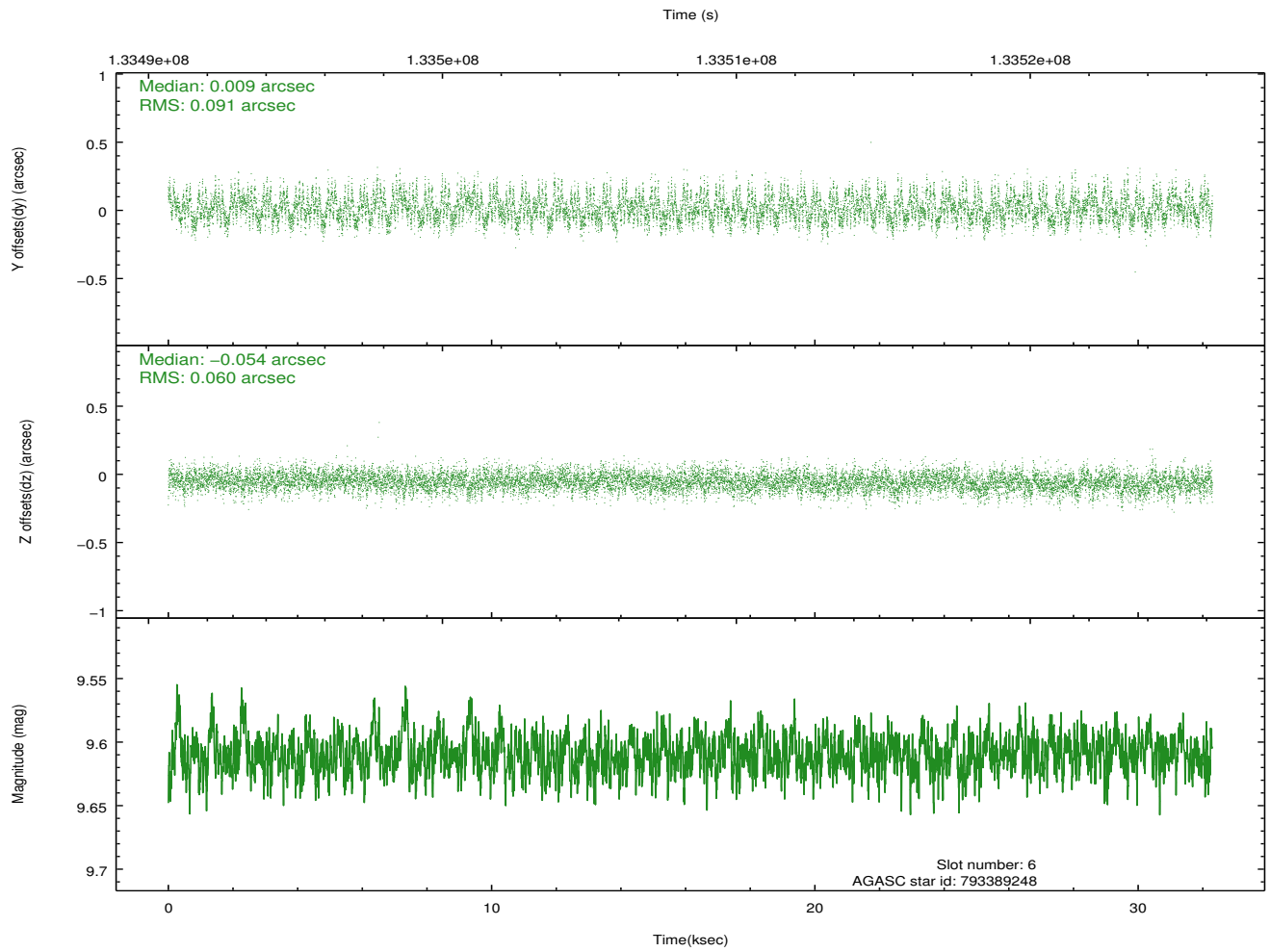
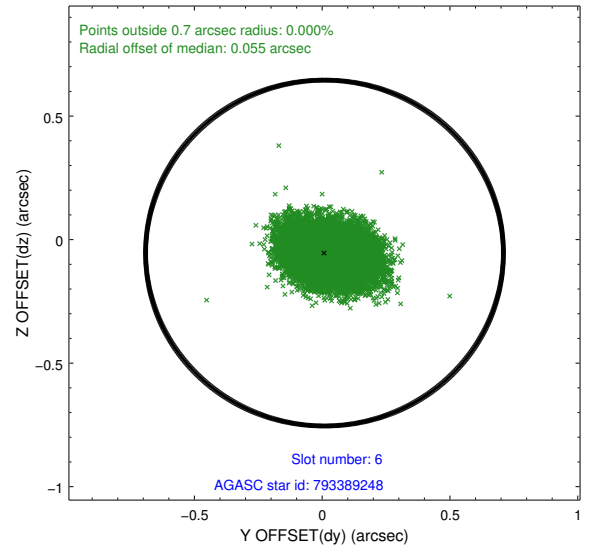
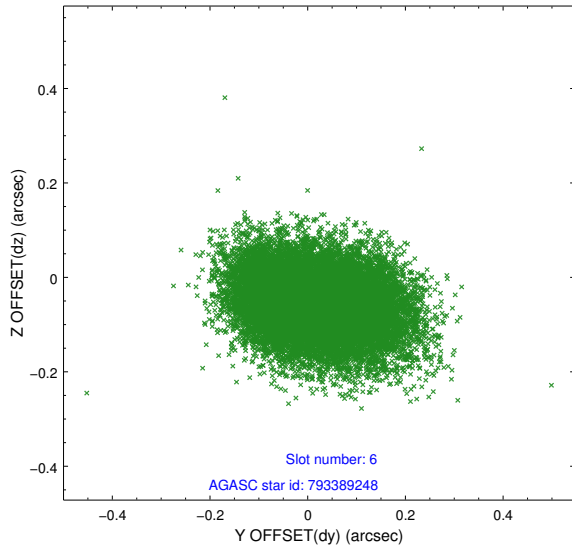
2.4.2 Slot 4



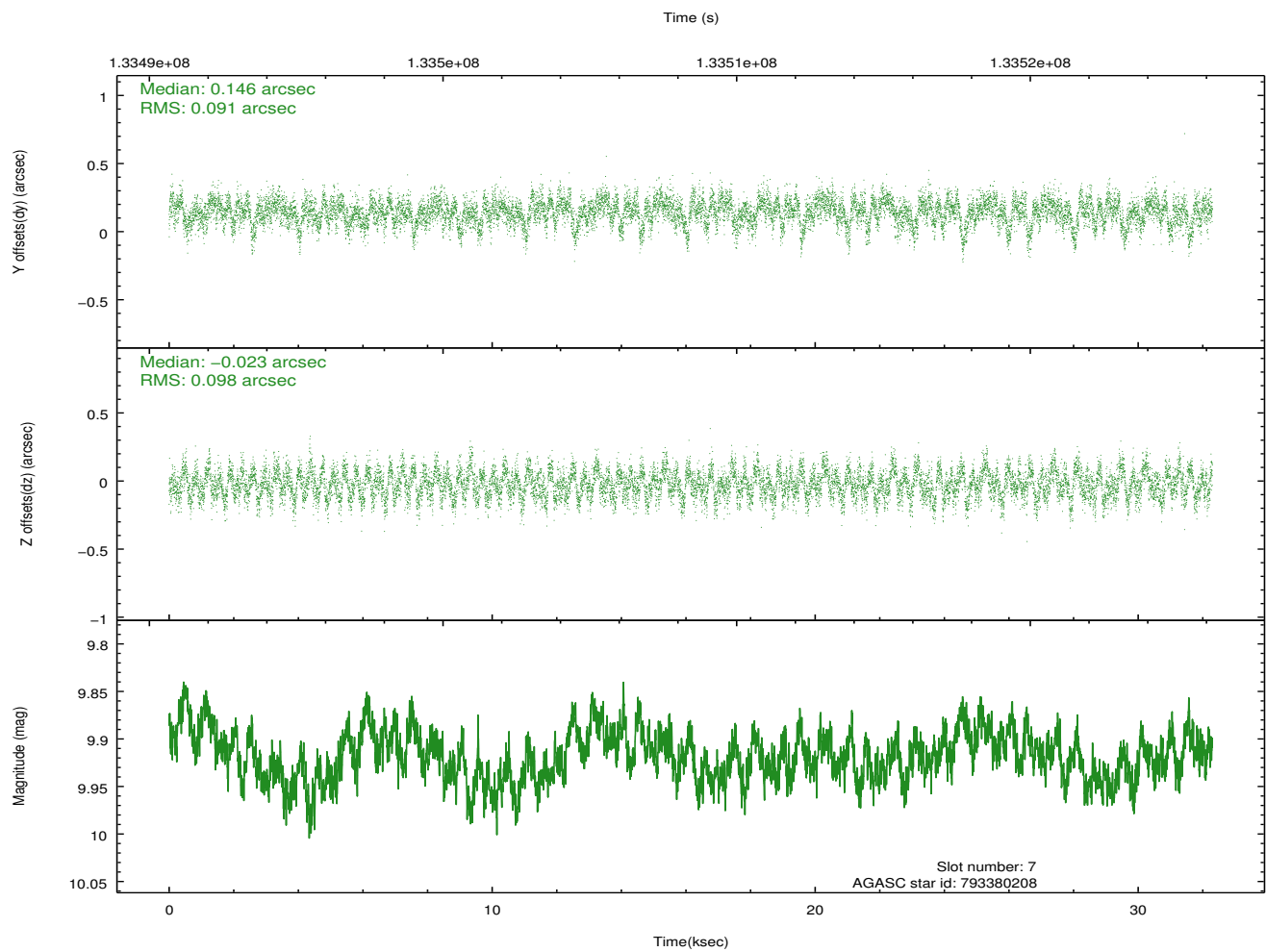
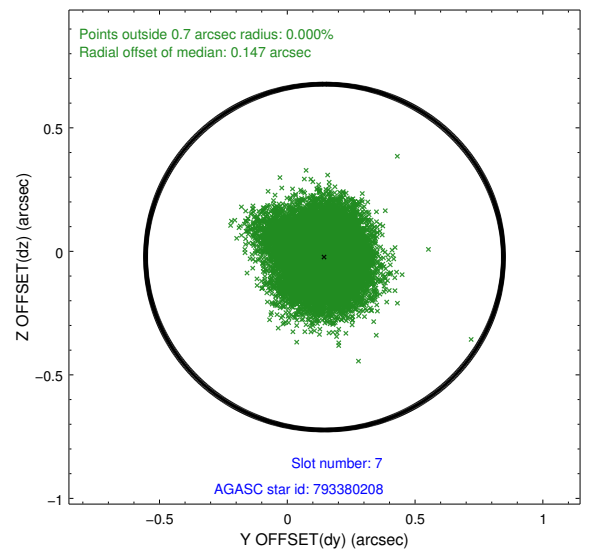
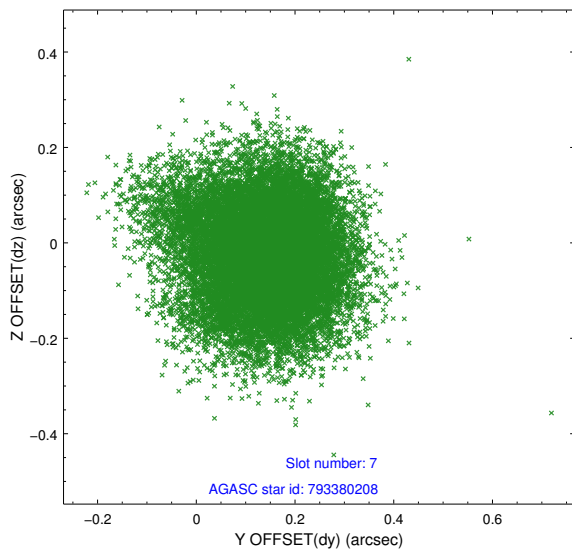
2.4.3 Slot 5



2.4.4 Slot 6

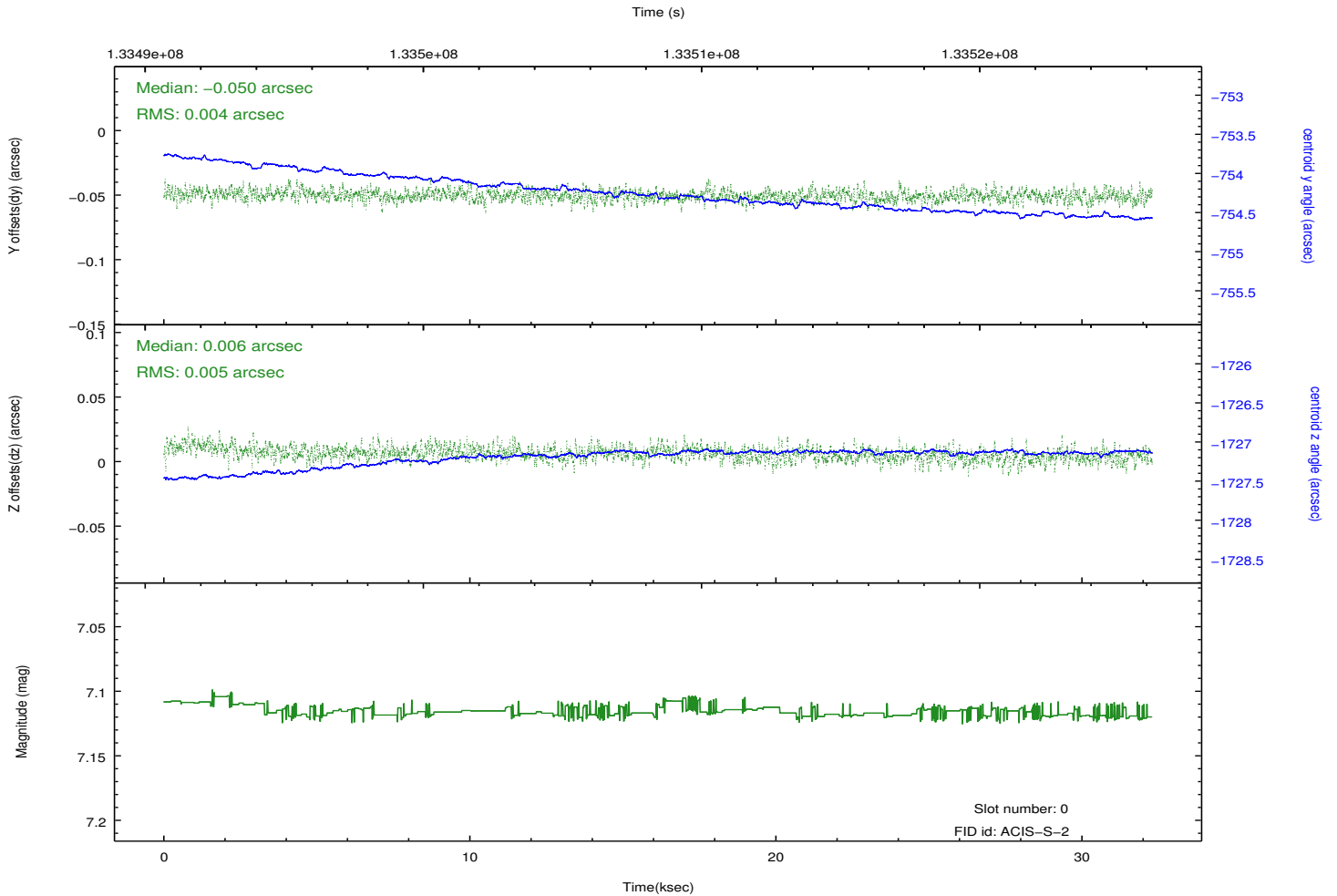
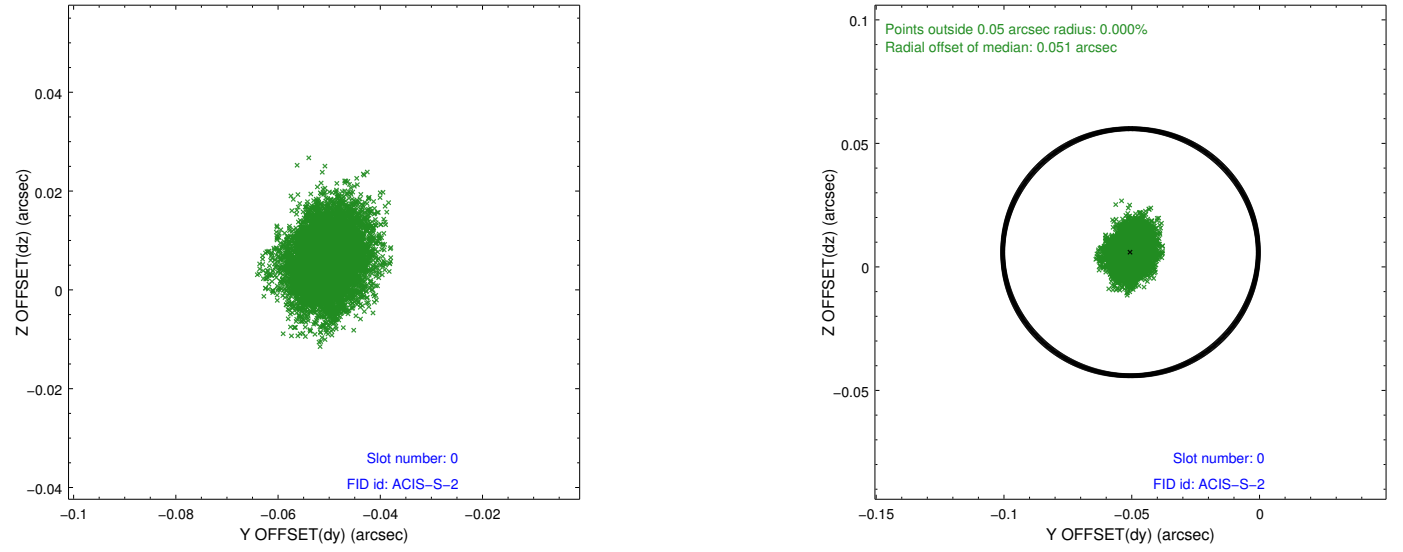


2.4.5 Slot 7

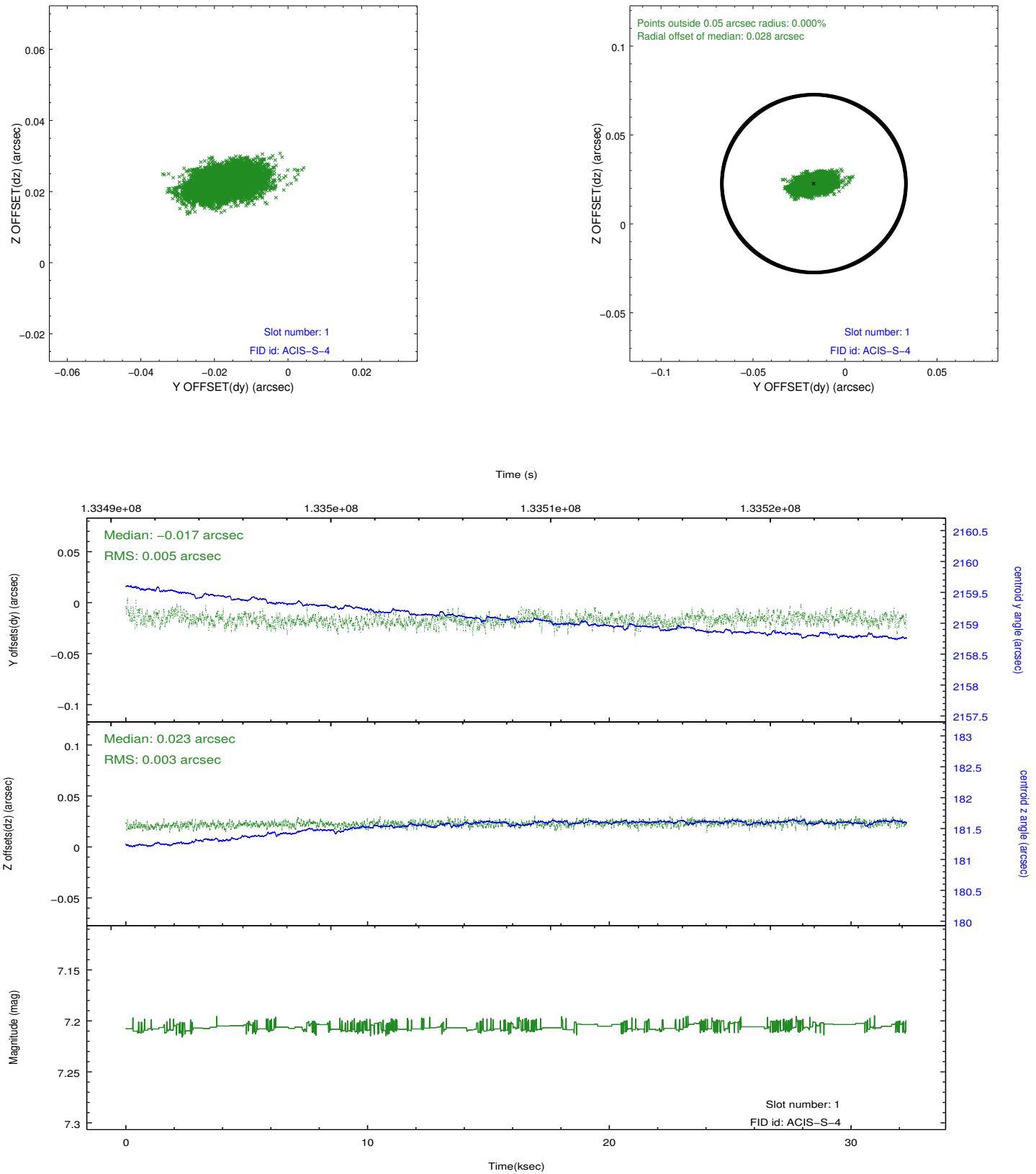


2.5 FID Slots

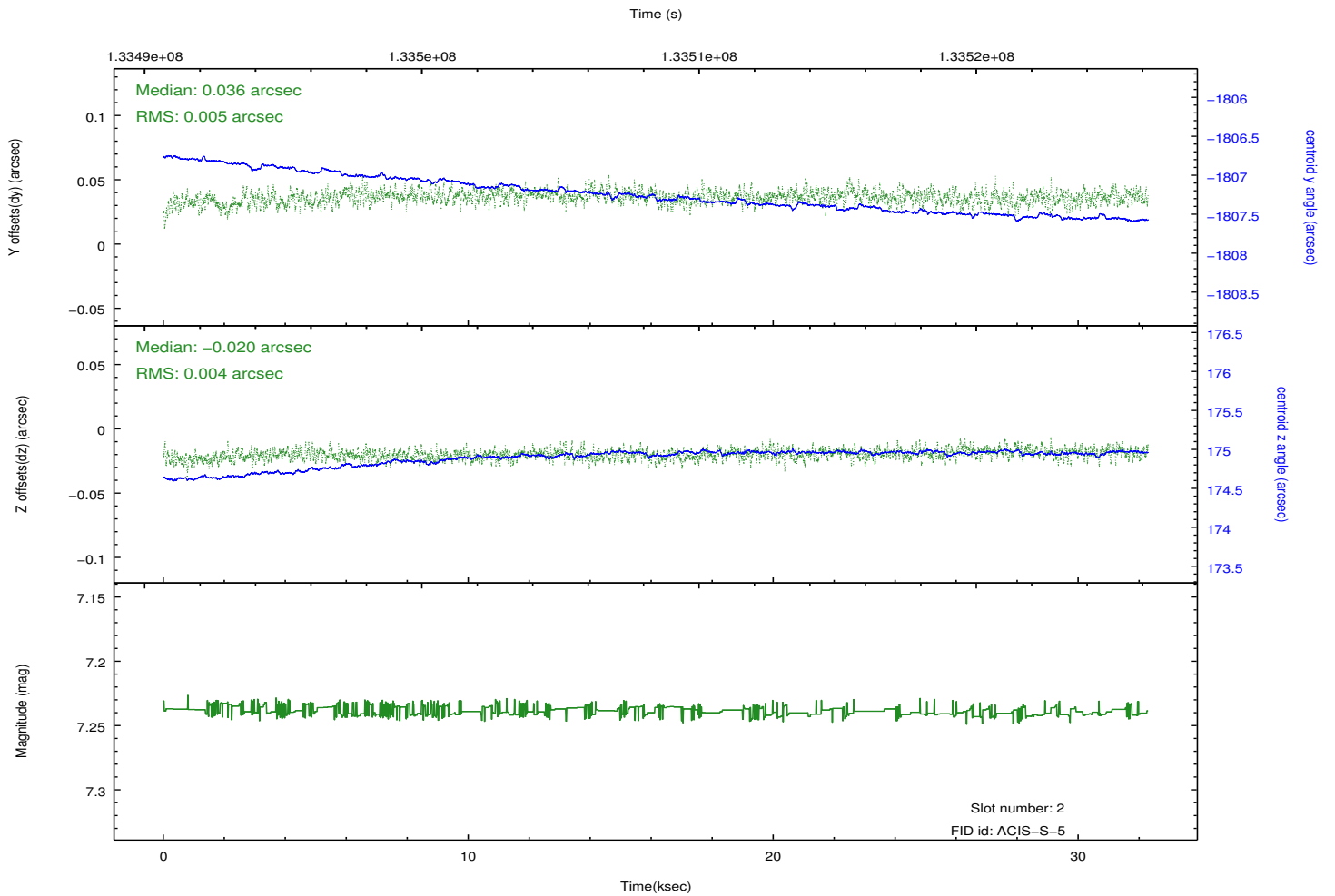
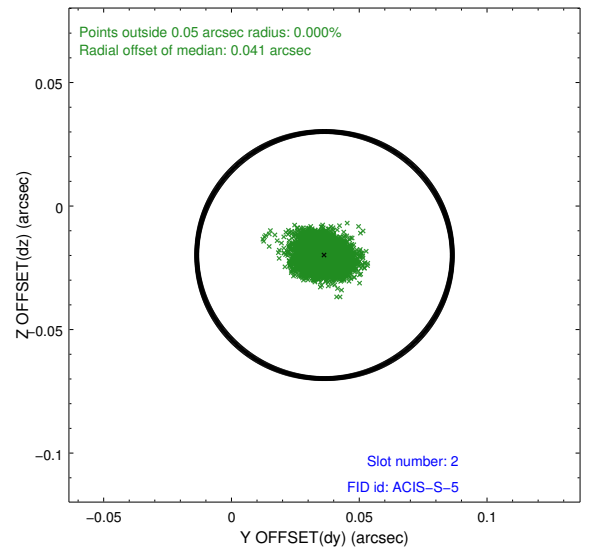
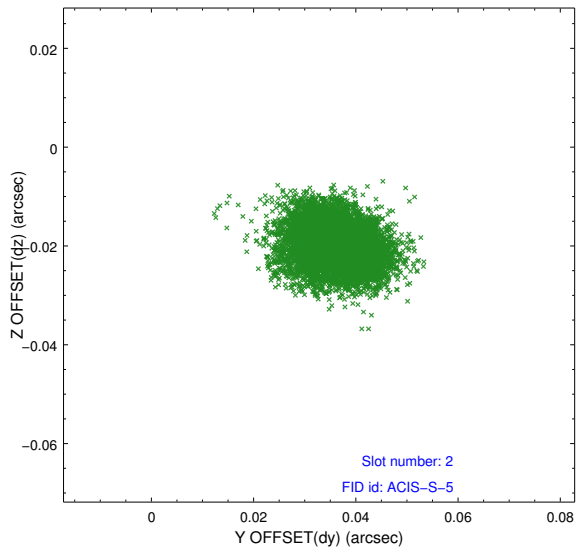
2.5.1 Slot 0



2.5.2 Slot 1



2.5.3 Slot 2



A Summary

A.1 Status

V&V Scientist	Beth Sundheim
V&V Date (YYYY-MM-DD)	2012.10.09
V&V Edition	1
V&V Disposition and Status	OK
V&V Charge Time	32.106

A.2 Comments