

V&V Reference Report

L2 ASCDS Version : 8.4.5

Observation 3848 - L2 Version 3
Chandra X-Ray Center

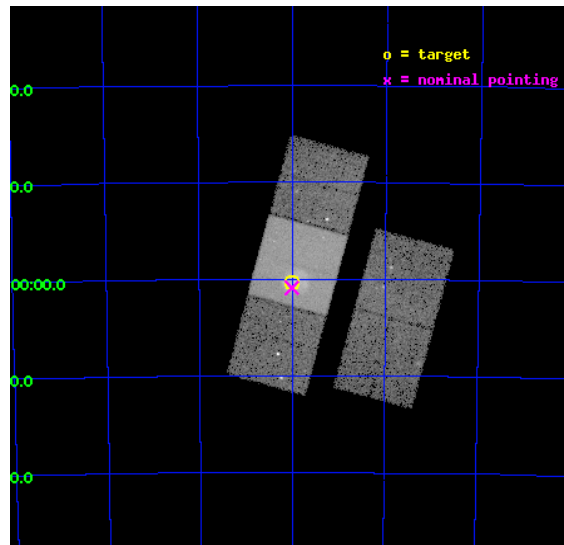
L2 Processing Date : Oct 23 2012

Contents

1	Front	2
2	OBI	3
2.1	OBI	3
2.1.1	Images	3
2.1.2	Bias	3
2.1.3	Parameters	4
2.1.4	Events	4
2.2	Compared Parameters	5
2.3	Aspect	6
2.4	Star Slots	9
2.4.1	Slot 3	9
2.4.2	Slot 4	10
2.4.3	Slot 5	11
2.4.4	Slot 6	12
2.4.5	Slot 7	13
2.5	FID Slots	14
2.5.1	Slot 0	14
2.5.2	Slot 1	15
2.5.3	Slot 2	16
A	Summary	17
A.1	Status	17
A.2	Comments	17

1 Front

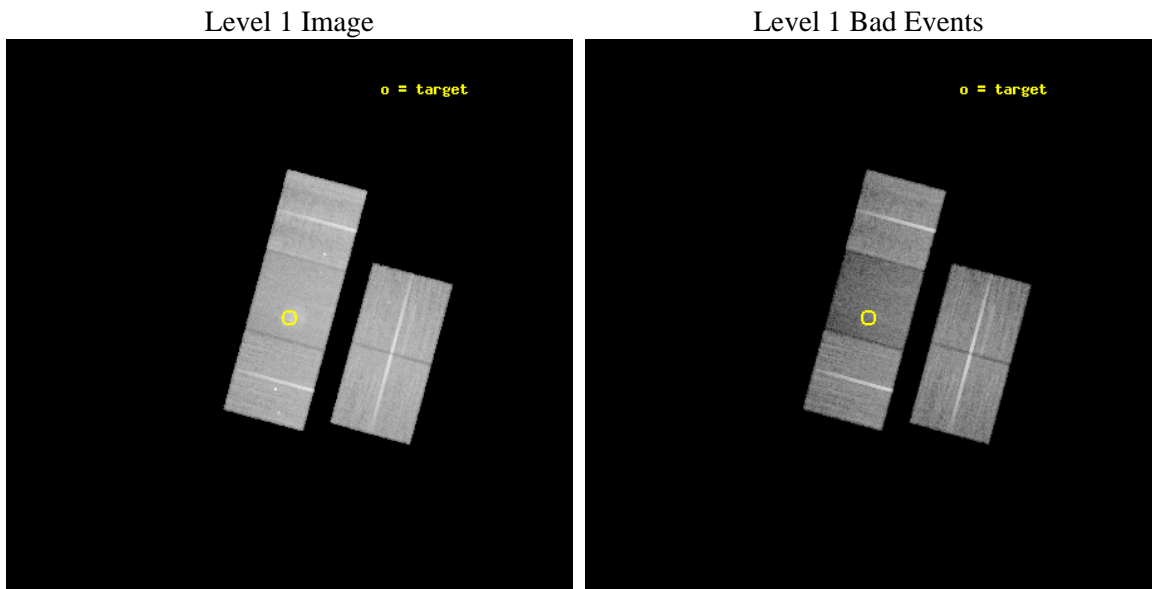
seq_num	500327	Sequence number
obs_id	3848	Observation id
title	SUPERNOVA REMNANTS IN THE MAGELLANIC CLOUDS	Proposal title
observer	Frederick Seward	Principal investigator
object	0532-710 [N206]	Source name
dtycycle	0	
cycle	P	events from which exps? Prim/Second/Both
ra_targ	83.0	Observer's specified target RA [deg]
dec_targ	-71.005556	Observer's specified target Dec [deg]
ra_nom	83.0026232617	Nominal RA [deg]
dec_nom	-71.015175090275	Nominal Dec [deg]
roll_nom	285.1591089888	Nominal Roll [deg]
revision	3	Processing version of data
ontime	33551.29993546	Sum of GTIs [s]
livetime	33112.927501696	Livetime [s]
ontime2	33551.29993546	Sum of GTIs [s]
ontime3	33545.01799503	Sum of GTIs [s]
ontime6	33551.29993546	Sum of GTIs [s]
ontime7	33551.29993546	Sum of GTIs [s]
ontime8	33545.017955184	Sum of GTIs [s]
l2events	148787	Number of level 2 events



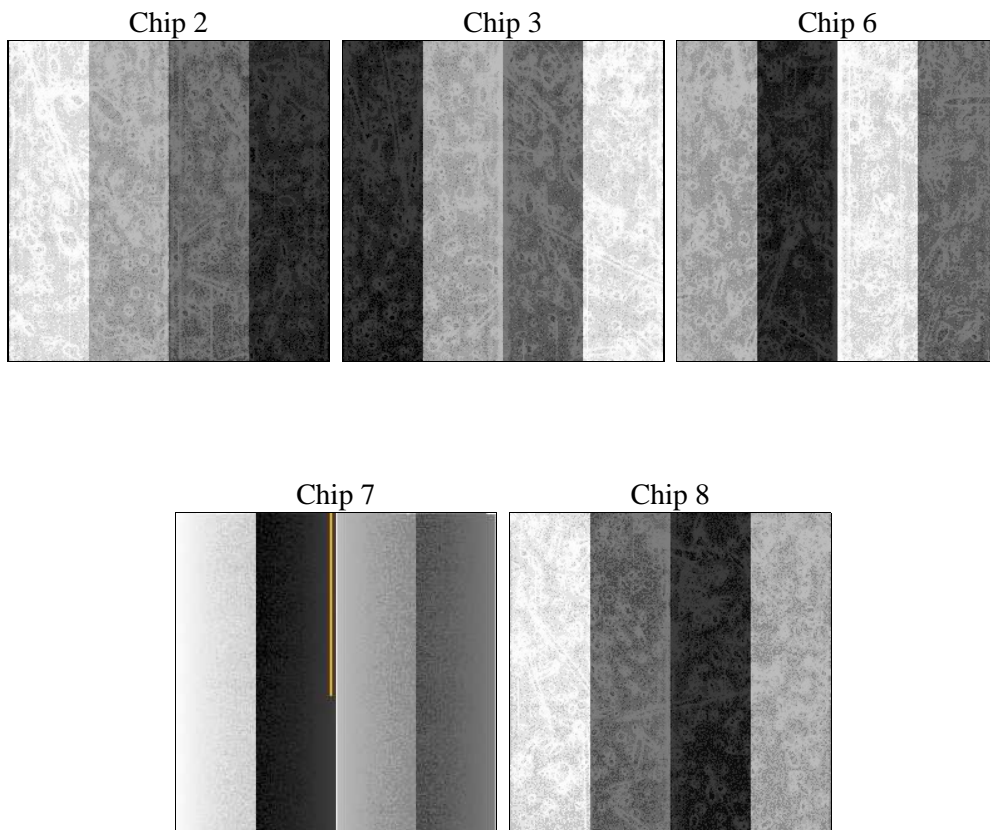
2 OBI

2.1 OBI

2.1.1 Images



2.1.2 Bias



2.1.3 Parameters

obi_num	0	Obi number	sched_exp_time	33452.000000	[s] Scheduled observation exposure time
ascdsver	8.4.5	Processing system revision	ontime	33551.29993546	Sum of GTIs [s]
caldbver	4.5.2	 	ontime2	33551.29993546	Sum of GTIs [s]
date	2012-10-23T12:29:01	Date and time of file creation	ontime3	33545.01799503	Sum of GTIs [s]
revision	3	Processing version of data	ontime6	33551.29993546	Sum of GTIs [s]
			ontime7	33551.29993546	Sum of GTIs [s]
			ontime8	33545.017955184	Sum of GTIs [s]
			l1events	889666	Number of level 1 events

2.1.4 Events

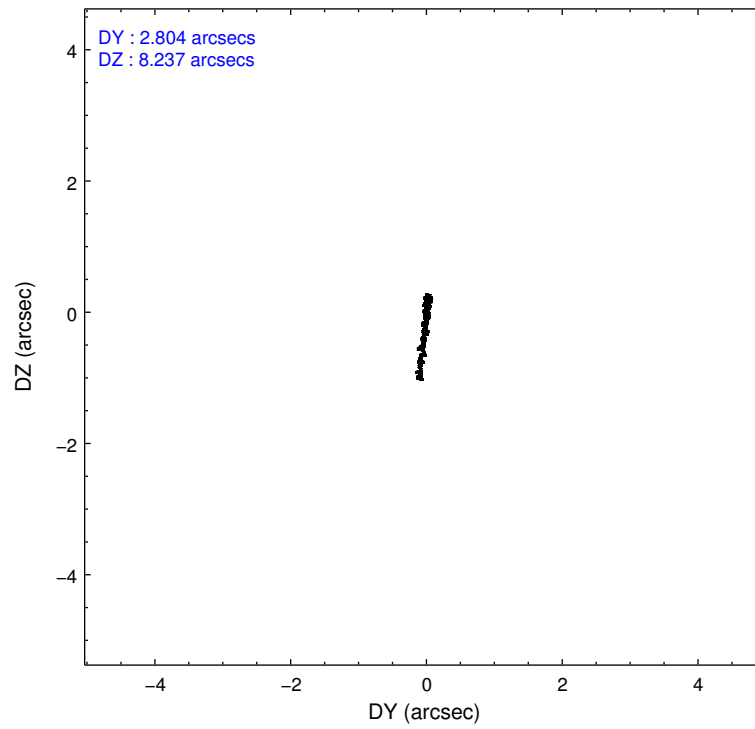
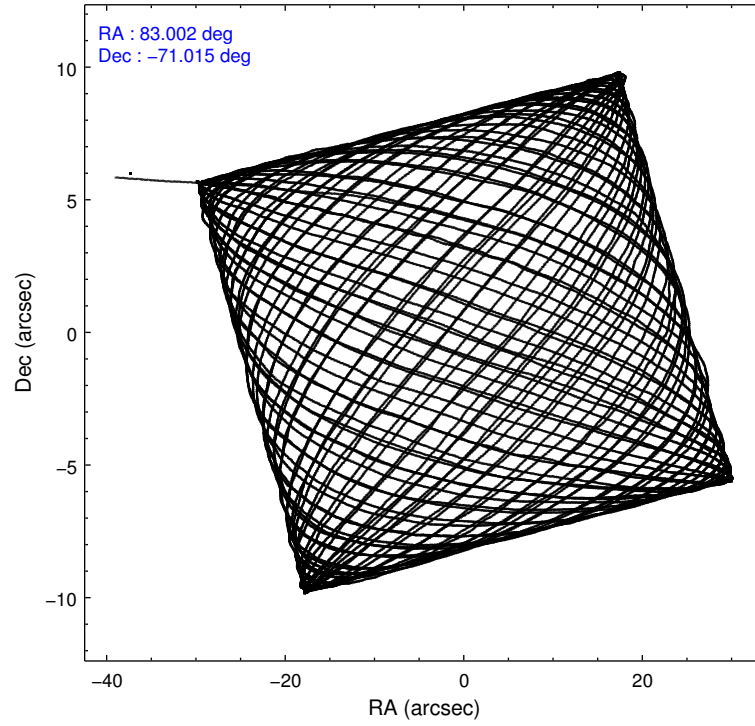
	ccd 2	ccd 3	ccd 6	ccd 7	ccd 8
level 1 events	174336	167662	172997	168029	206642
rejected events	157948	150756	152907	79807	160106
rejected %	90%	89%	88%	47%	77%

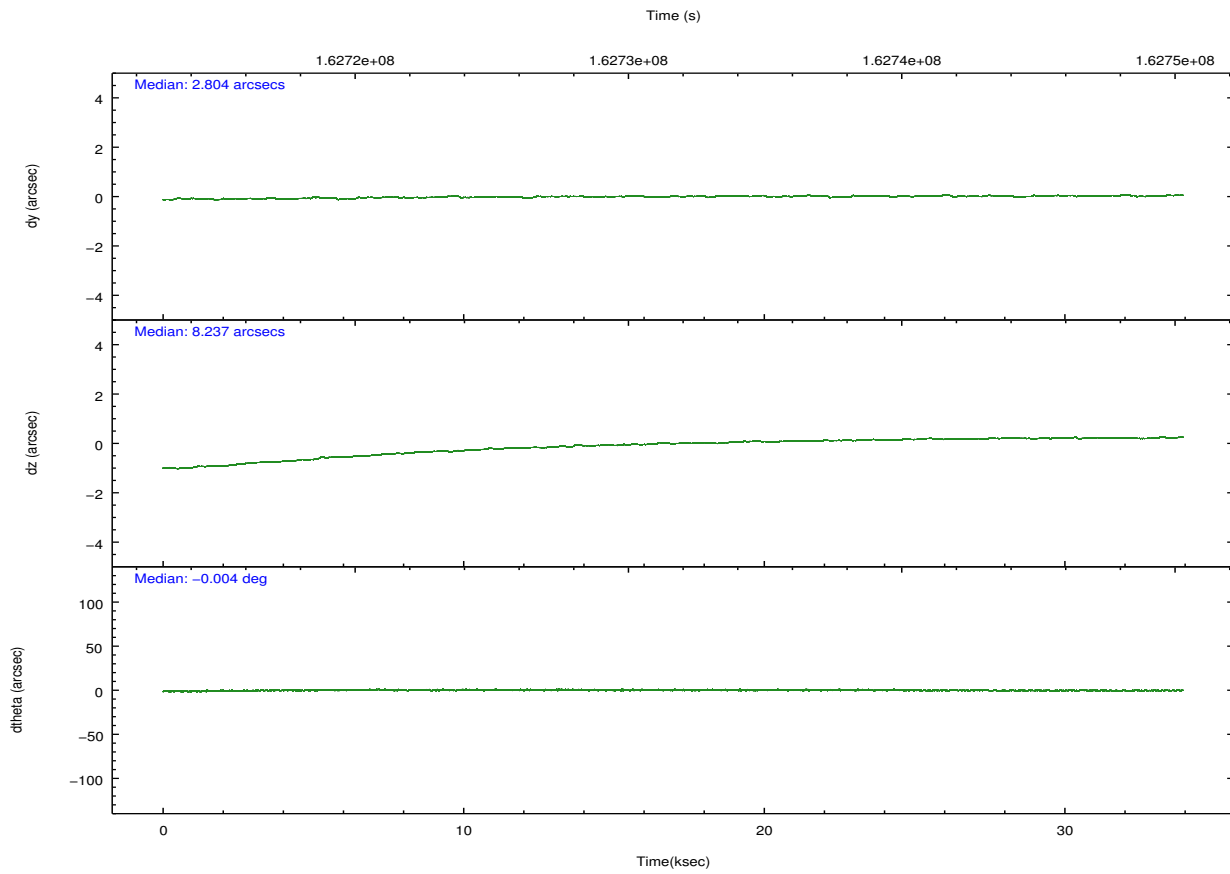
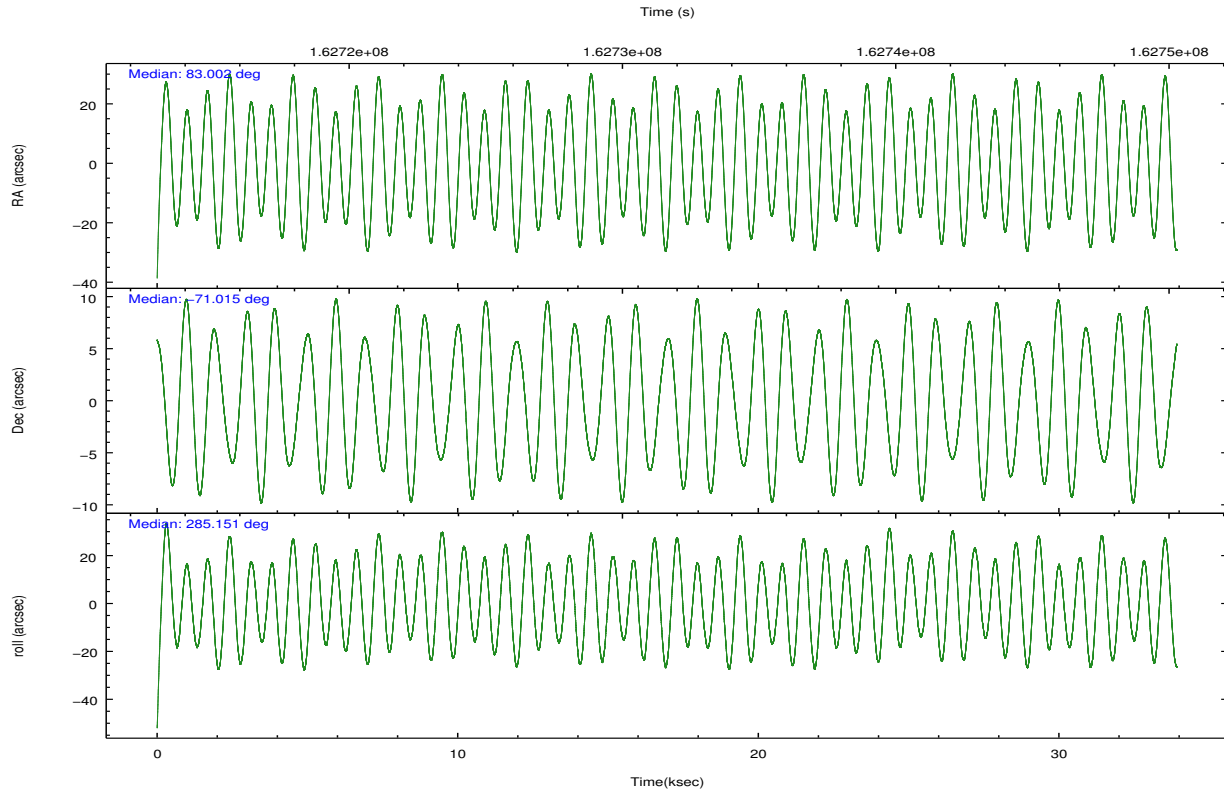
	ccd 2	ccd 3	ccd 6	ccd 7	ccd 8
grade 0 events	6541	7181	8643	11963	13748
	3%	4%	4%	7%	6%
grade 1 events	80	91	75	150	154
	0%	0%	0%	0%	0%
grade 2 events	3662	3307	3943	19084	10693
	2%	1%	2%	11%	5%
grade 3 events	1805	1762	2027	8990	5061
	1%	1%	1%	5%	2%
grade 4 events	1777	1754	1967	8901	4760
	1%	1%	1%	5%	2%
grade 5 events	4539	5595	5526	16798	8257
	2%	3%	3%	9%	3%
grade 6 events	2609	2906	3514	39309	12275
	1%	1%	2%	23%	5%
grade 7 events	153323	145066	147302	62834	151694
	87%	86%	85%	37%	73%

2.2 Compared Parameters

Parameter	Planned	Actual	Parameter	Planned	Actual
Instrument	ACIS	ACIS	Obspar format version number	7	7
Detector	ACIS-23678	ACIS-23678	Obspar file type	PREDICTED	ACTUAL
Grating	NONE	NONE	Obspar update status	NONE	UPDATED
Data mode	VFAINT	VFAINT	Number of optional ACIS chips dropped	0	0
Observation mode	POINTING	POINTING	On-chip summing requested	N	N
[deg] Pointing RA	82.942536	83.00262326170018	Subarray requested	NONE	NONE
[deg] Pointing Dec	-70.996252	-71.01517509027472	Alternating exposures requested	N	N
[deg] Pointing Roll	284.945661	285.159108988802	[s] Primary exposure time	0.000000	3.1
[mm] SIM focus pos	-0.684267	-0.6828225247311905			
[mm] SIM defocus	0	0.001444936568705701			
[mm] SIM translation stage pos	-190.132523	-190.1400660498719			
[mm] SIM translation stage offset	0	0.00754346686406393			
[s] Observation start time (MET)	162715146.184000	162714039.47473			
Observation start date	2003-02-27T06:38:02	2003-02-27T06:20:39			
[s] Observation end time (MET)	162748598.184000	162749393.26372			
Observation end date	2003-02-27T15:55:34	2003-02-27T16:09:53			
Read mode	TIMED	TIMED			

2.3 Aspect



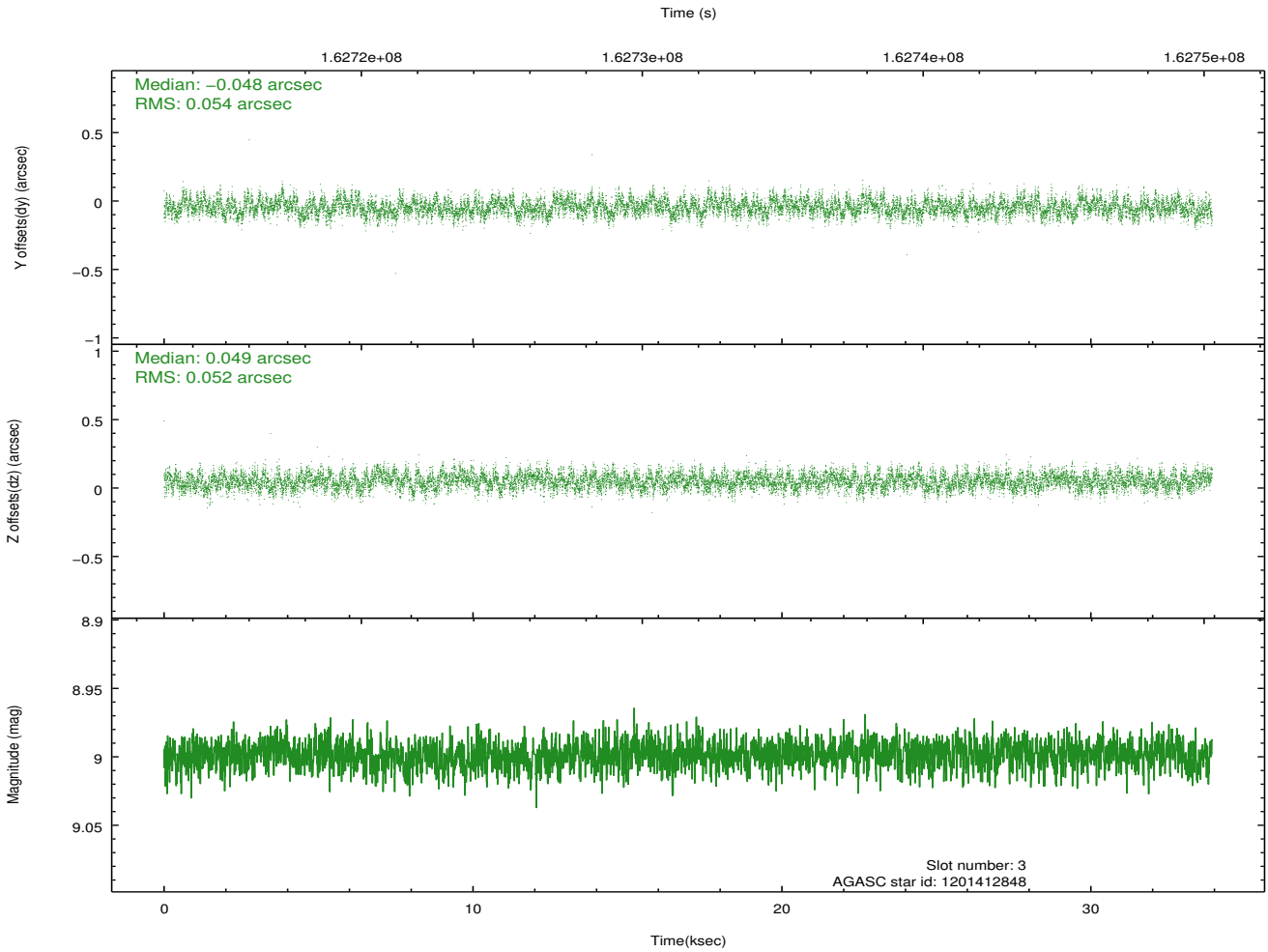
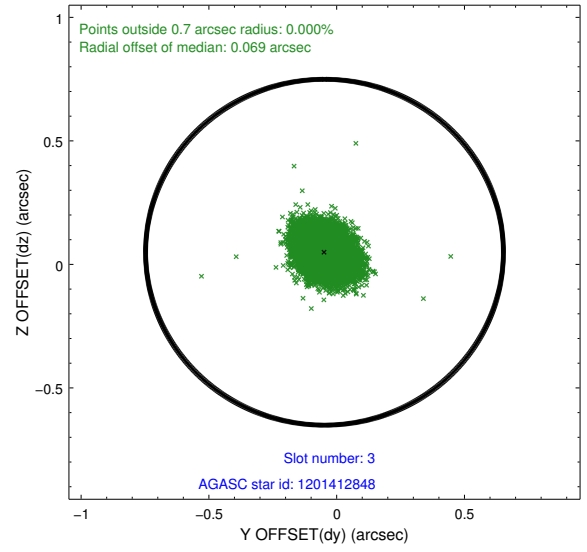
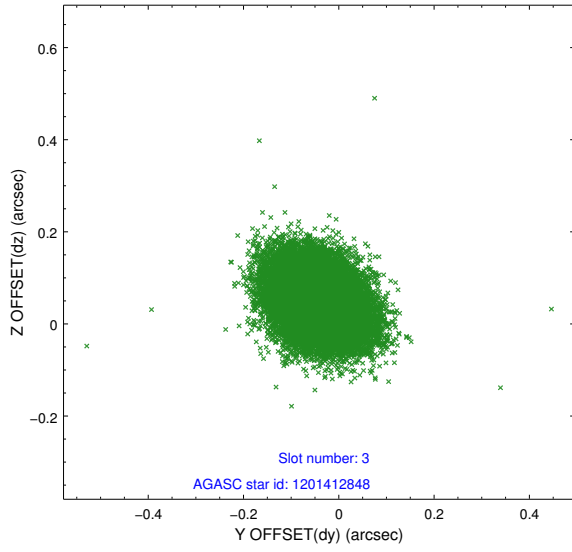


Slot Statistics

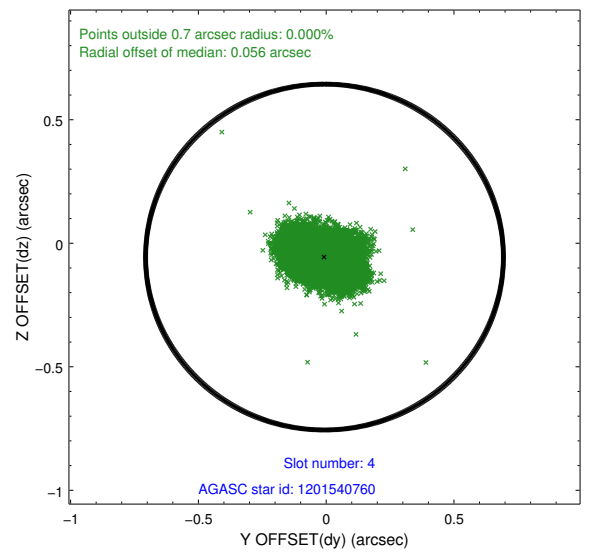
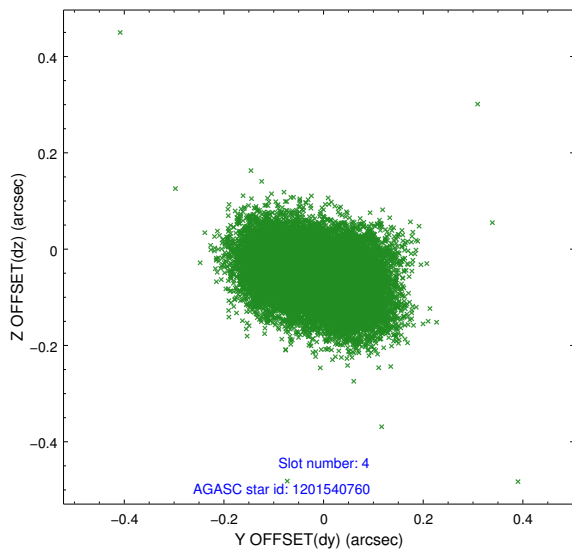
slot	status	id	mag	n_pts	med_dy	med_dz	dr1	dr2	ra	dec	mean_y	mean_z
0	FID	ACIS-S-2	7.11	8274	-0.019	-0.014	0.008	0.014	0.000000	0.000000	-755.45	-1729.30
1	FID	ACIS-S-4	7.20	8273	-0.003	0.013	0.006	0.011	0.000000	0.000000	2157.82	179.15
2	FID	ACIS-S-5	7.24	8274	-0.009	0.010	0.008	0.014	0.000000	0.000000	-1808.22	172.88
3	GUIDE	1201412848	9.00	16540	-0.048	0.049	0.080	0.129	81.875057	-71.216960	459.58	-1402.76
4	GUIDE	1201540760	8.56	16547	-0.007	-0.056	0.097	0.157	84.403691	-70.419249	-1531.87	2233.45
5	GUIDE	1201409616	9.59	16536	0.021	0.030	0.115	0.188	81.670021	-70.738546	-1270.33	-1224.48
6	GUIDE	1201542232	9.68	16525	0.042	-0.027	0.136	0.216	84.533398	-70.465667	-1327.50	2336.29
7	GUIDE	1202072504	9.10	16539	0.003	-0.001	0.094	0.155	84.613647	-71.282090	1517.81	1593.58

2.4 Star Slots

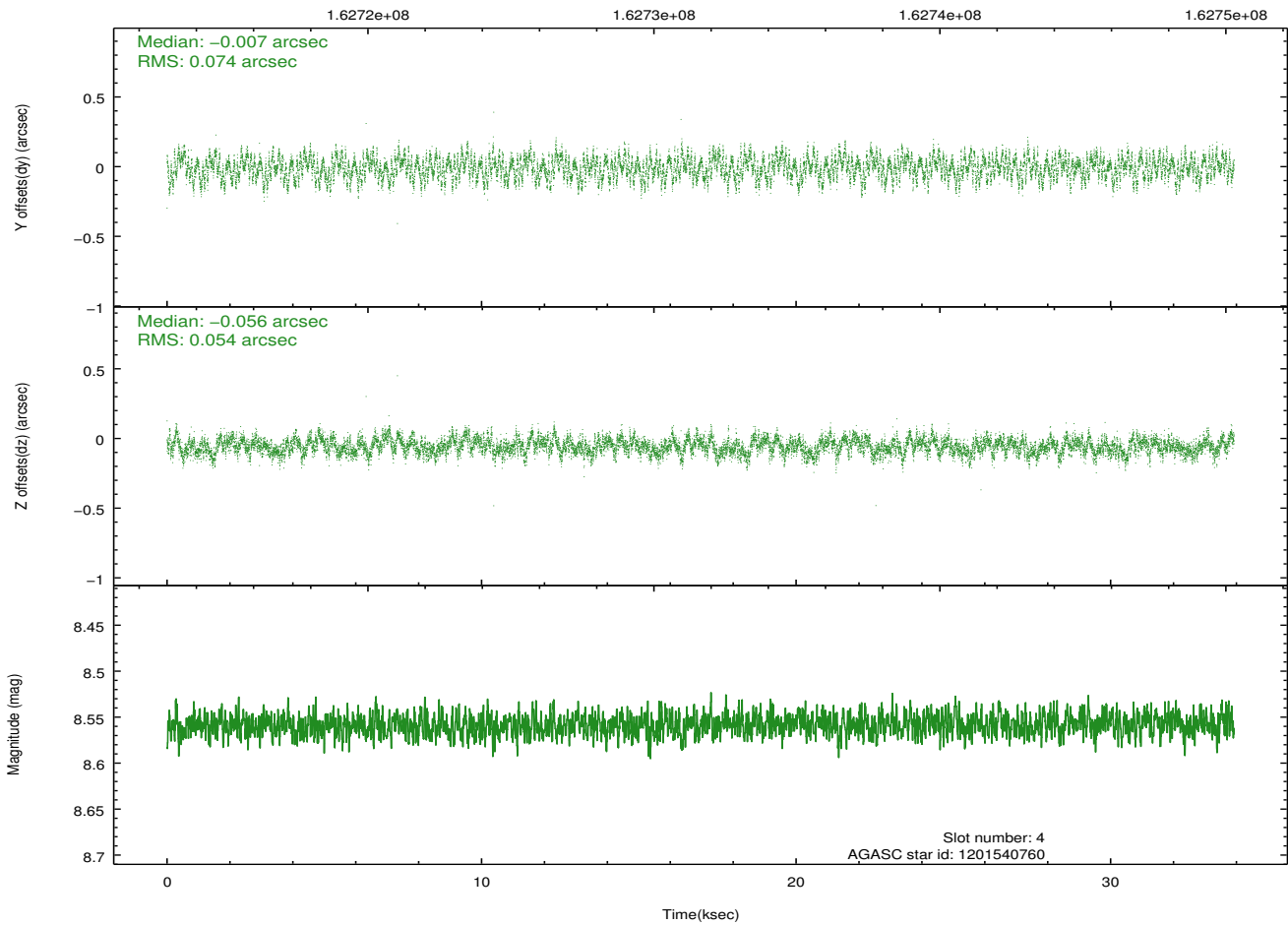
2.4.1 Slot 3



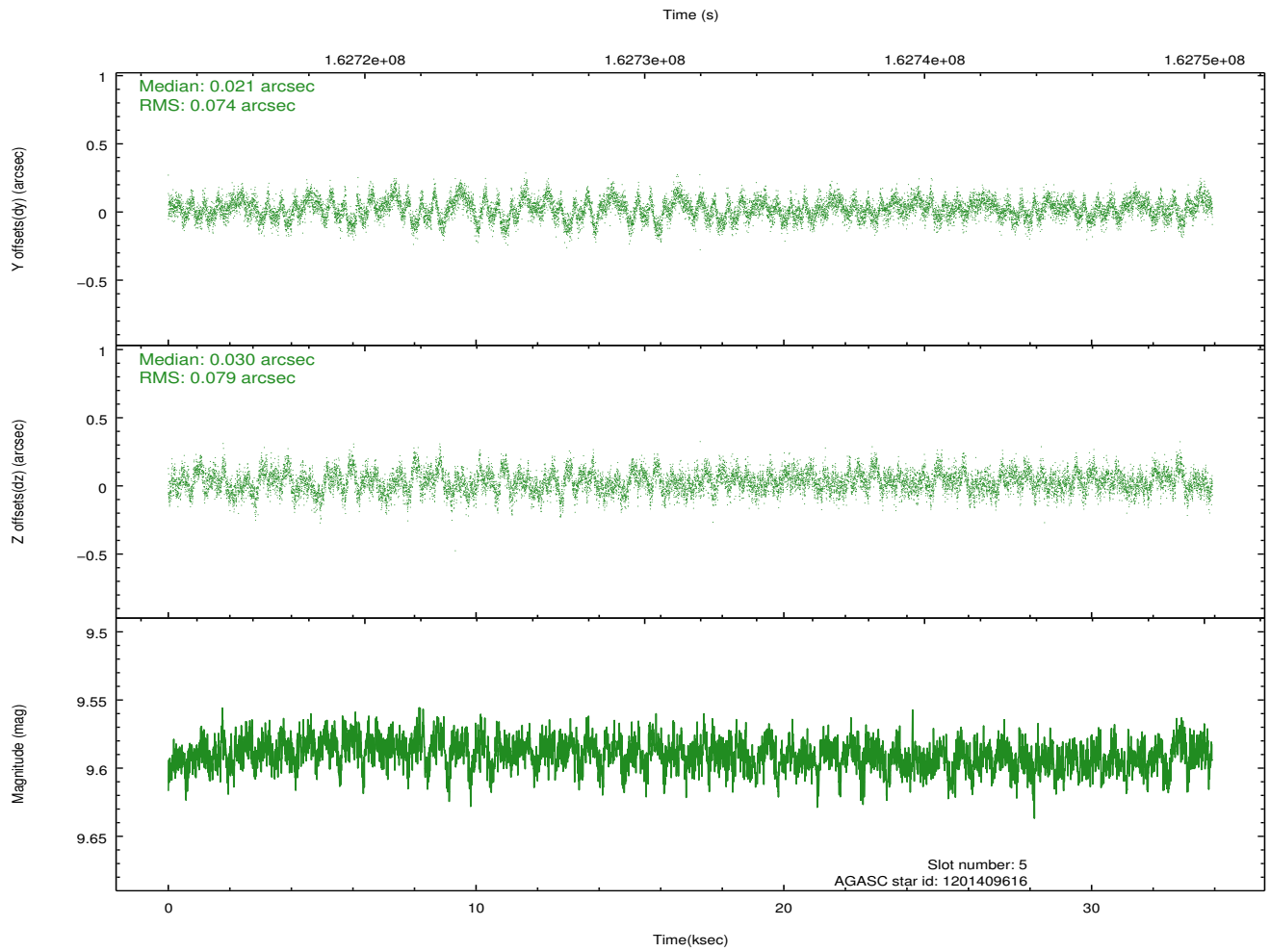
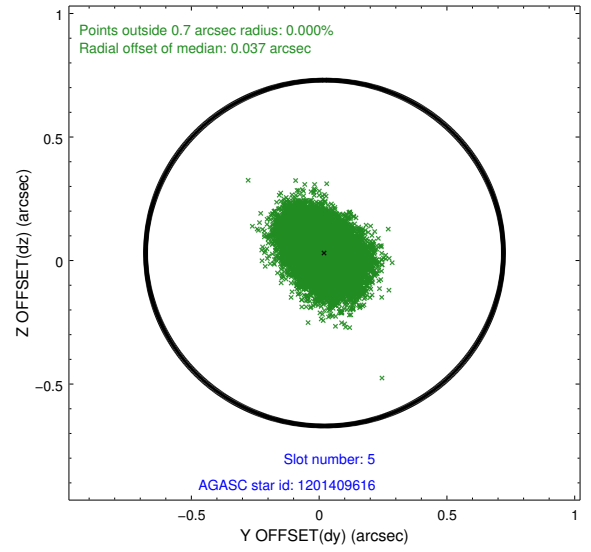
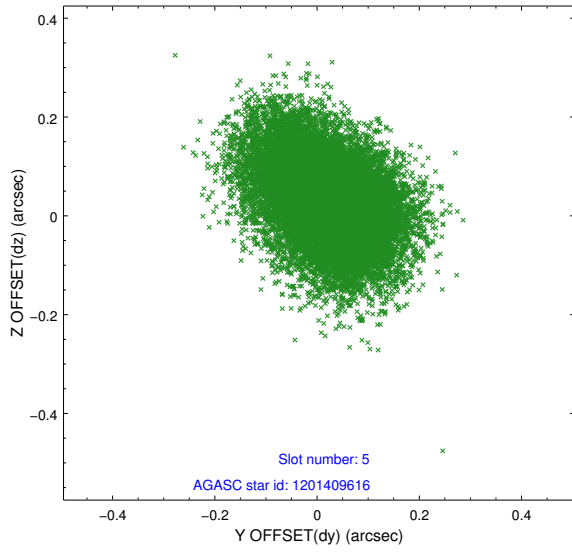
2.4.2 Slot 4



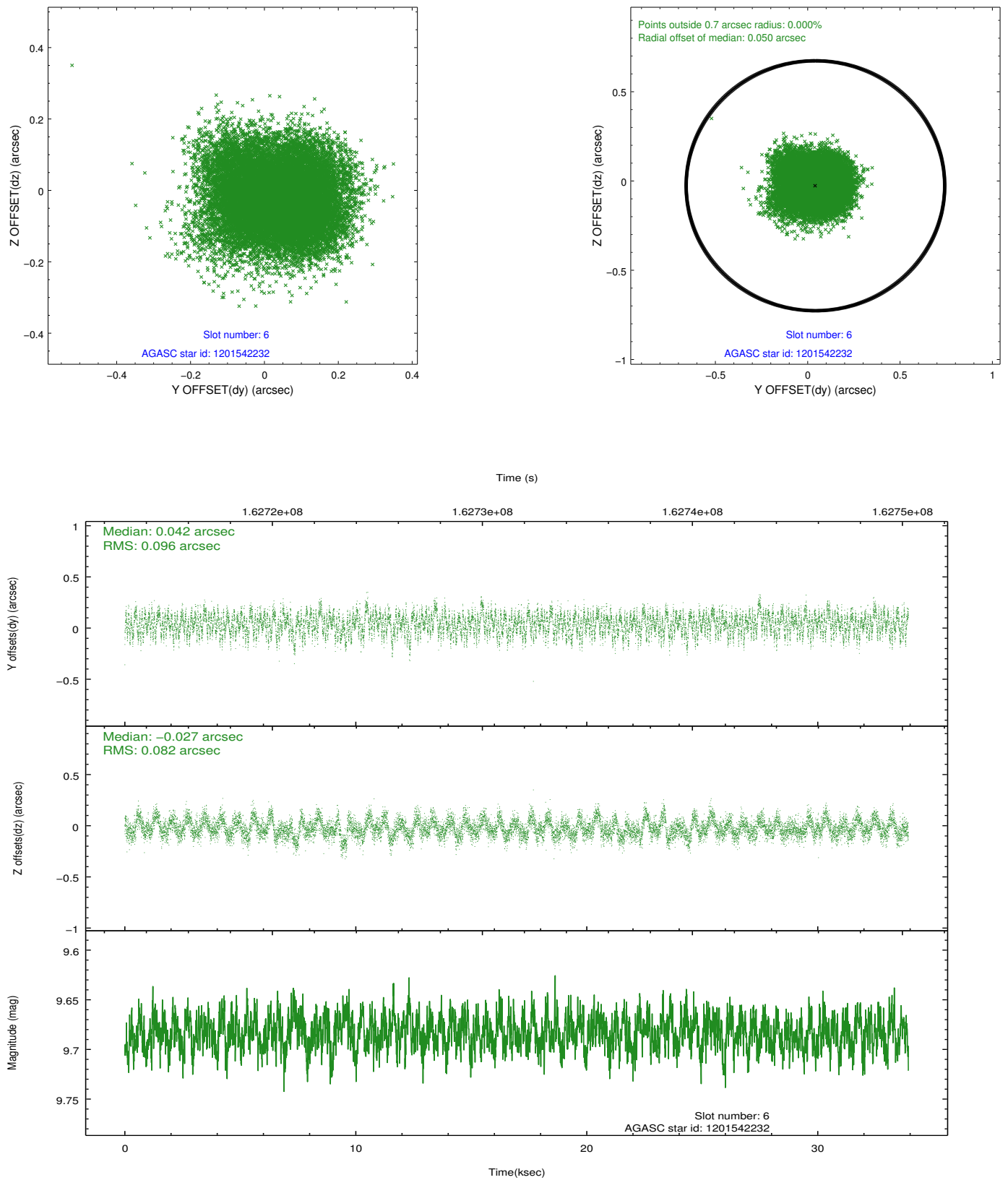
Time (s)



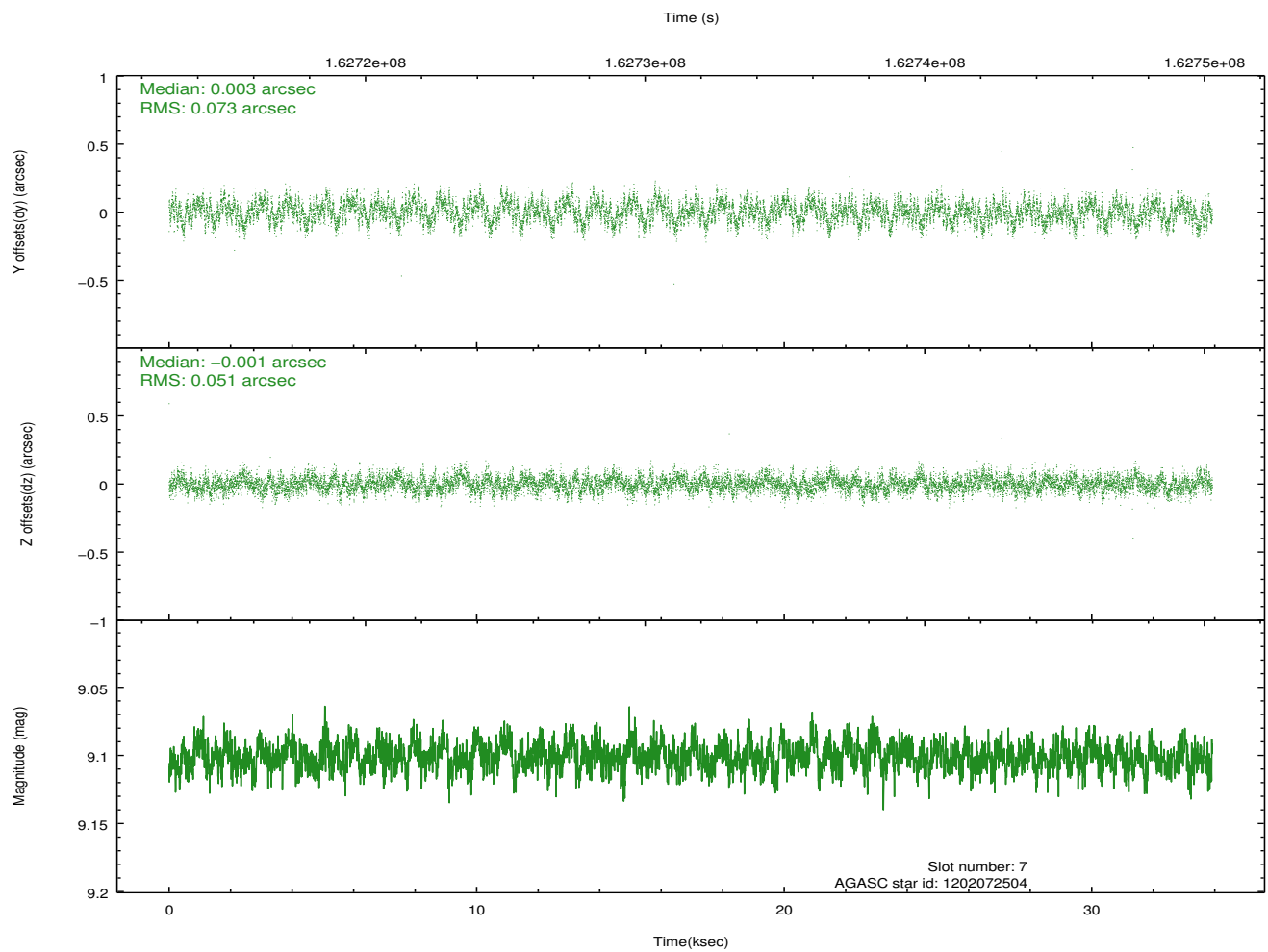
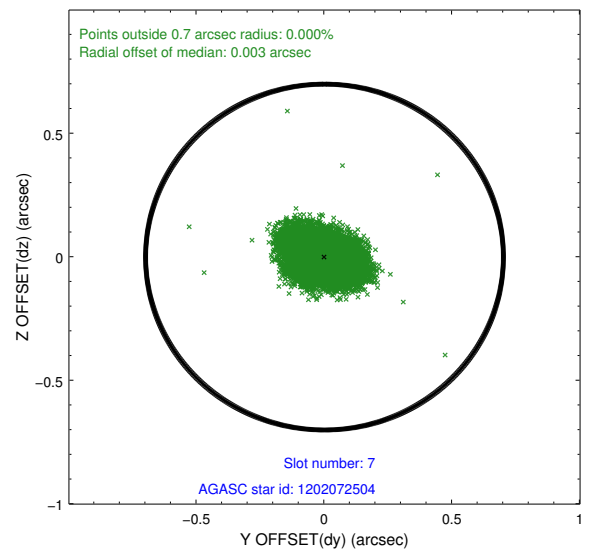
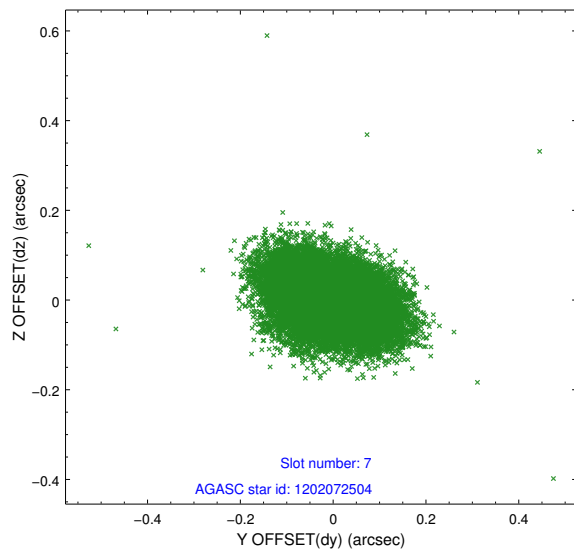
2.4.3 Slot 5



2.4.4 Slot 6

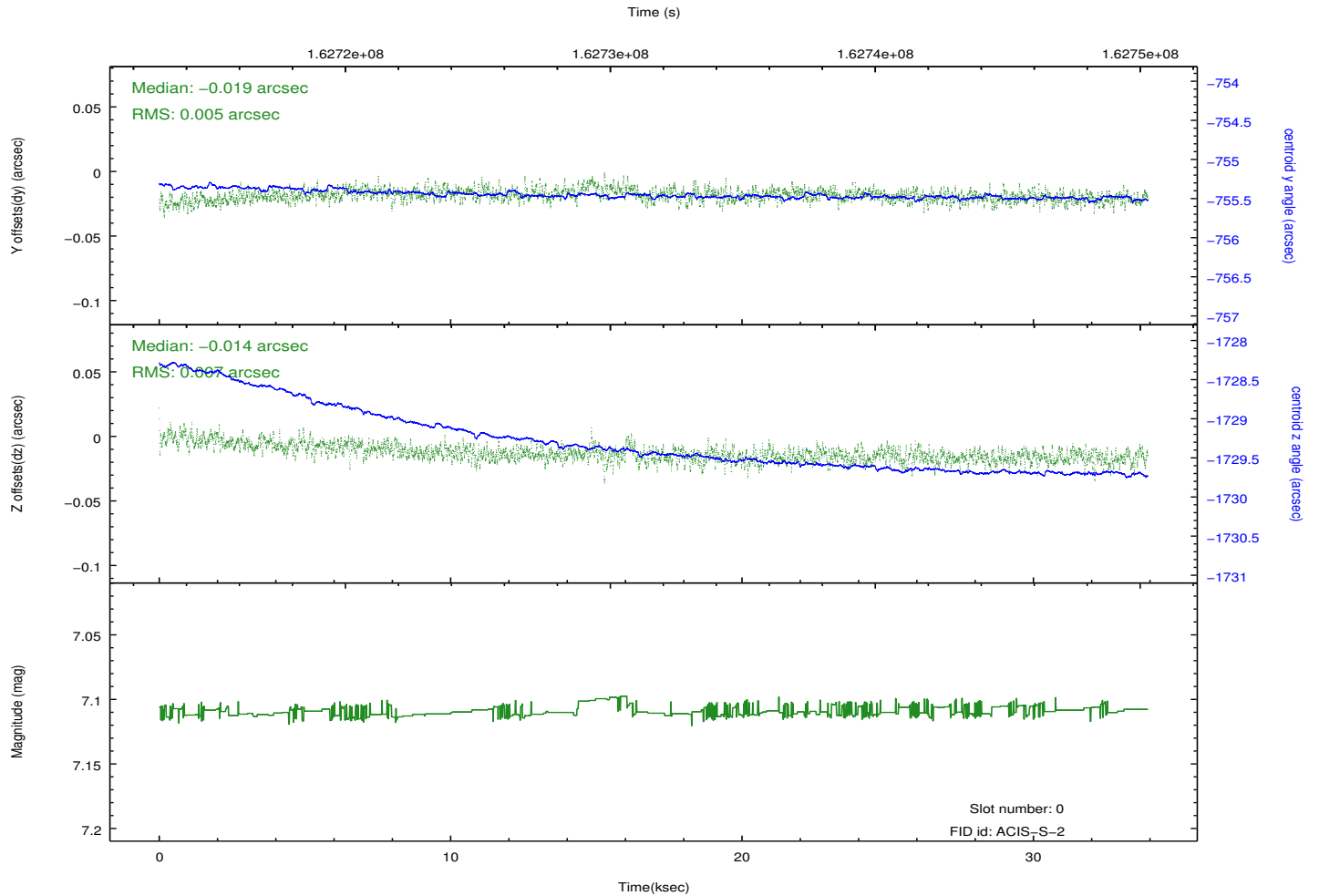
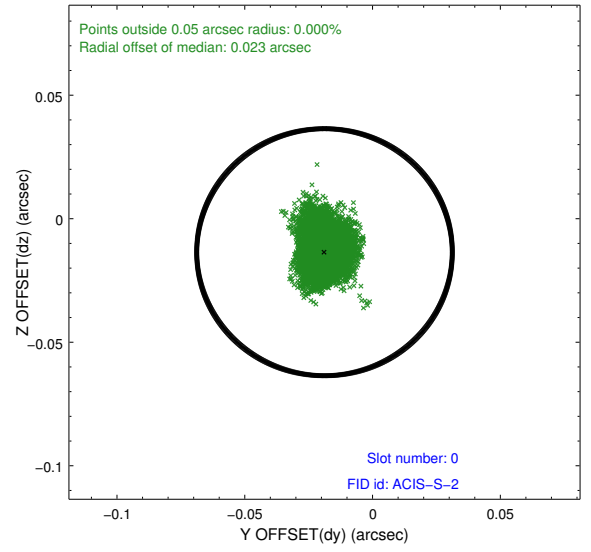
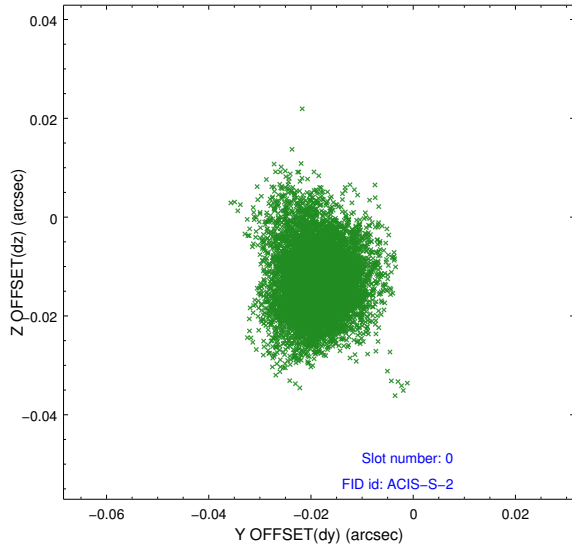


2.4.5 Slot 7

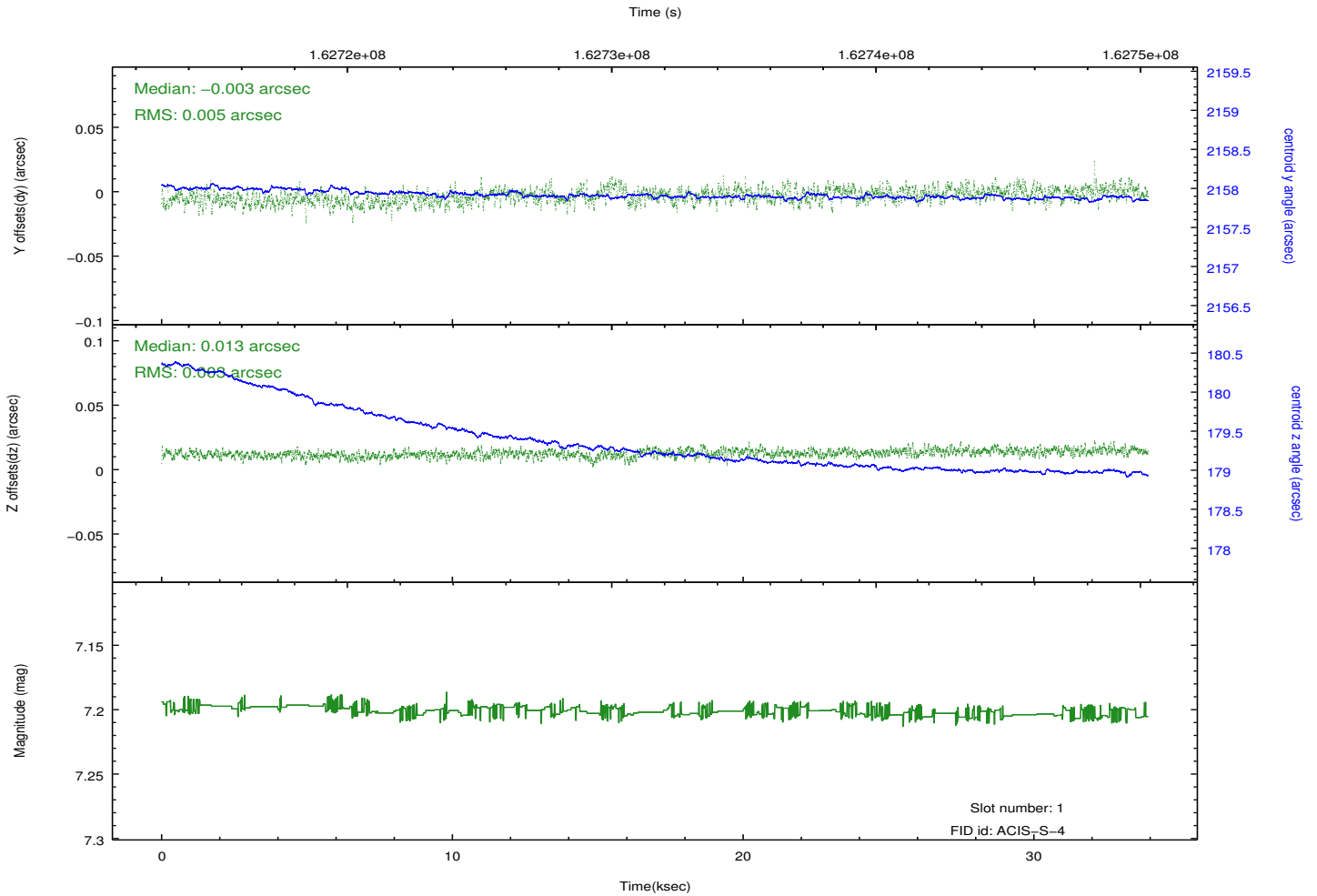
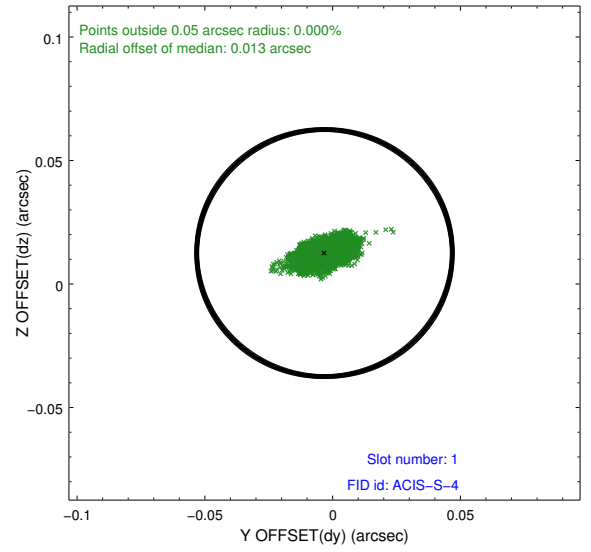
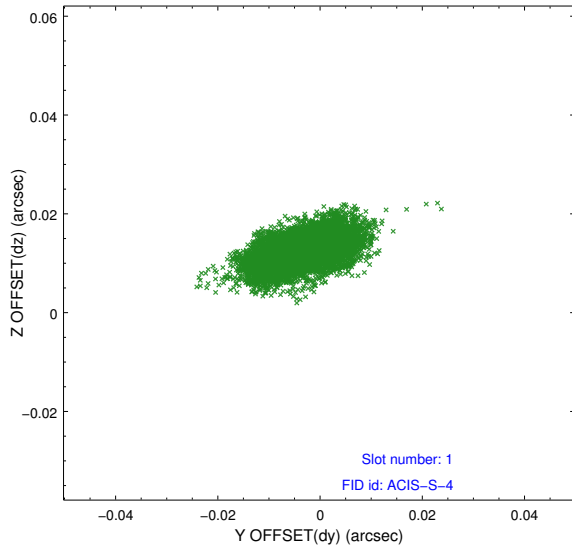


2.5 FID Slots

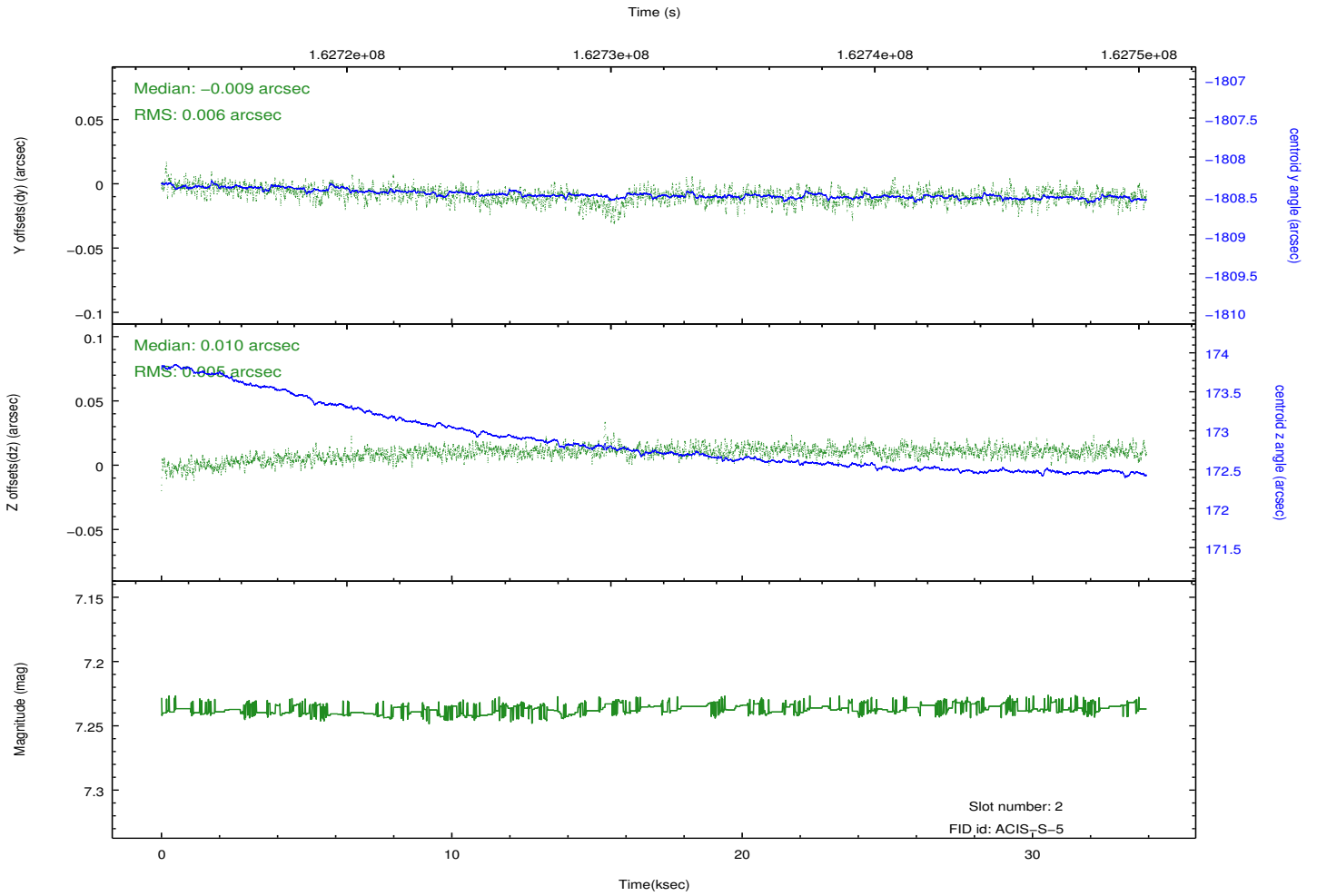
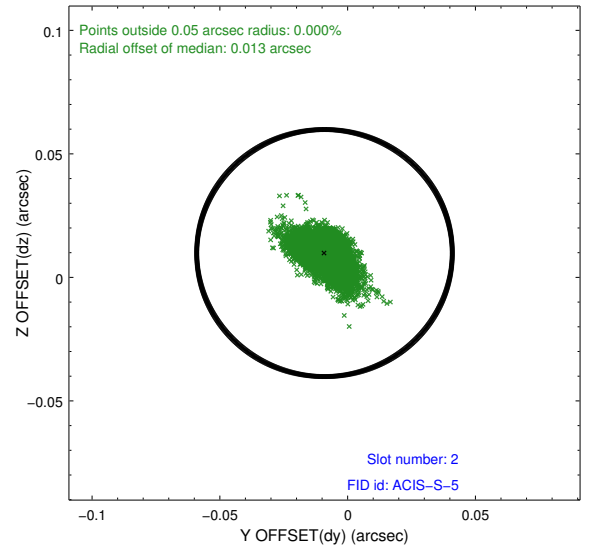
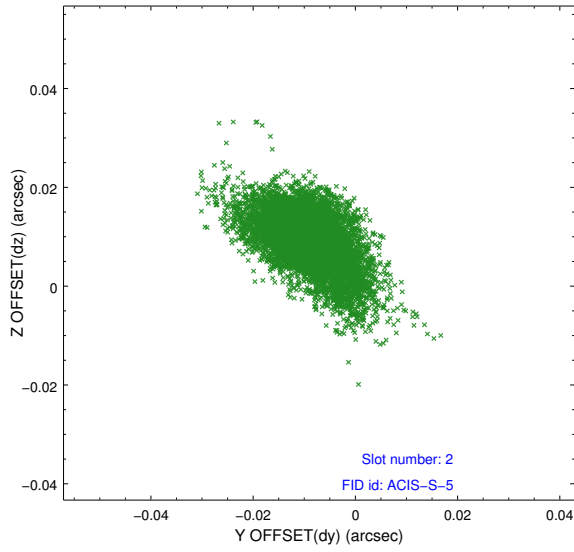
2.5.1 Slot 0



2.5.2 Slot 1



2.5.3 Slot 2



A Summary

A.1 Status

V&V Scientist	Jen Lauer
V&V Date (YYYY-MM-DD)	2012.11.07
V&V Edition	1
V&V Disposition and Status	OK
V&V Charge Time	33.554

A.2 Comments