

V&V Reference Report

L2 ASCDS Version : 8.4.5

Observation 4028 - L2 Version 3
Chandra X-Ray Center

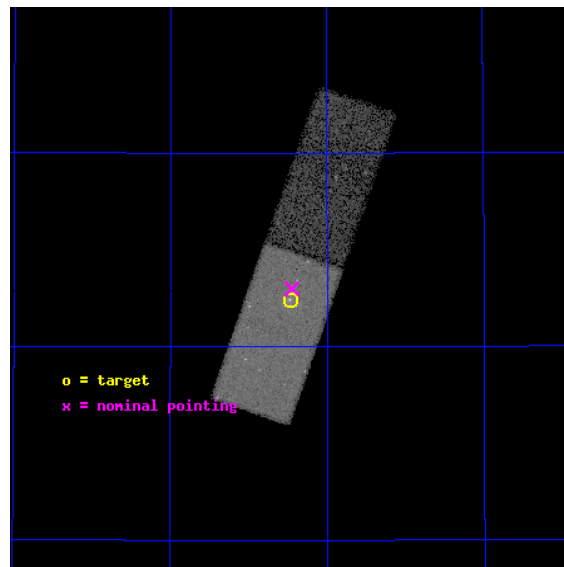
L2 Processing Date : Oct 22 2012

Contents

1	Front	2
2	OBI	3
2.1	OBI	3
2.1.1	Images	3
2.1.2	Bias	3
2.1.3	Parameters	4
2.1.4	Events	4
2.2	Compared Parameters	5
2.3	Aspect	6
2.4	Star Slots	9
2.4.1	Slot 3	9
2.4.2	Slot 4	10
2.4.3	Slot 5	11
2.4.4	Slot 6	12
2.4.5	Slot 7	13
2.5	FID Slots	14
2.5.1	Slot 0	14
2.5.2	Slot 1	15
2.5.3	Slot 2	16
A	Summary	17
A.1	Status	17
A.2	Comments	17

1 Front

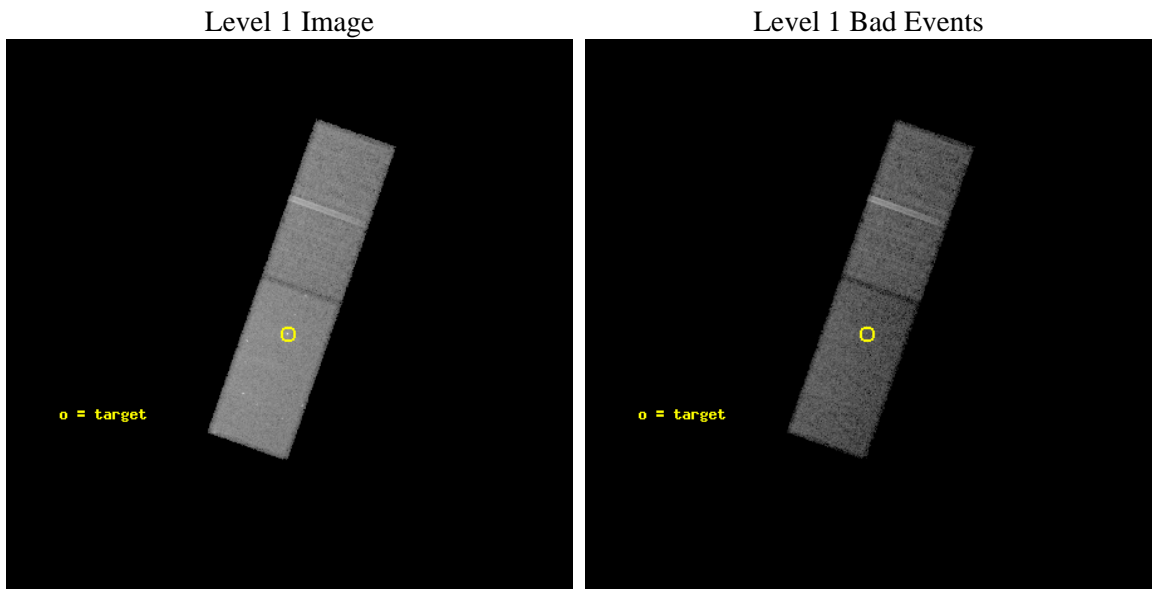
seq_num	700707	Sequence number
obs_id	4028	Observation id
title	PROBING THE NUCLEAR GEOMETRY OF THE MOST LUMINOUS GALAXY IN THE LOCAL UNIVERSE WITH CHANDRA	Proposal title
observer	Dr. Sarah Gallagher	Principal investigator
object	MARKARIAN 231	Source name
dtcycle	0	
cycle	P	events from which exps? Prim/Second/Both
ra_targ	194.059167	Observer's specified target RA [deg]
dec_targ	56.873667	Observer's specified target Dec [deg]
ra_nom	194.05633756919	Nominal RA [deg]
dec_nom	56.883190273249	Nominal Dec [deg]
roll_nom	109.34507723513	Nominal Roll [deg]
revision	3	Processing version of data
ontime	40700.799848348	Sum of GTIs [s]
livetime	39682.932626479	Livetime [s]
ontime6	40699.158828288	Sum of GTIs [s]
ontime7	40700.799848348	Sum of GTIs [s]
l2events	90672	Number of level 2 events



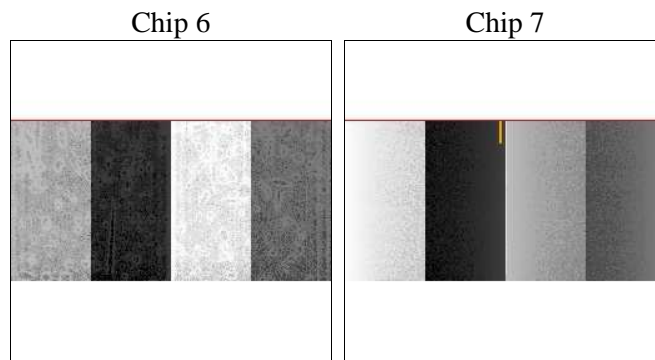
2 OBI

2.1 OBI

2.1.1 Images



2.1.2 Bias



2.1.3 Parameters

obi_num	0	Obi number	sched_exp_time	40520.000000	[s] Scheduled observation exposure time
ascdsver	8.4.5	Processing system revision	ontime	40700.799848348	Sum of GTIs [s]
caldbver	4.5.2	 	ontime6	40699.158828288	Sum of GTIs [s]
date	2012-10-22T06:48:04	Date and time of file creation	ontime7	40700.799848348	Sum of GTIs [s]
revision	3	Processing version of data	l1events	322315	Number of level 1 events

2.1.4 Events

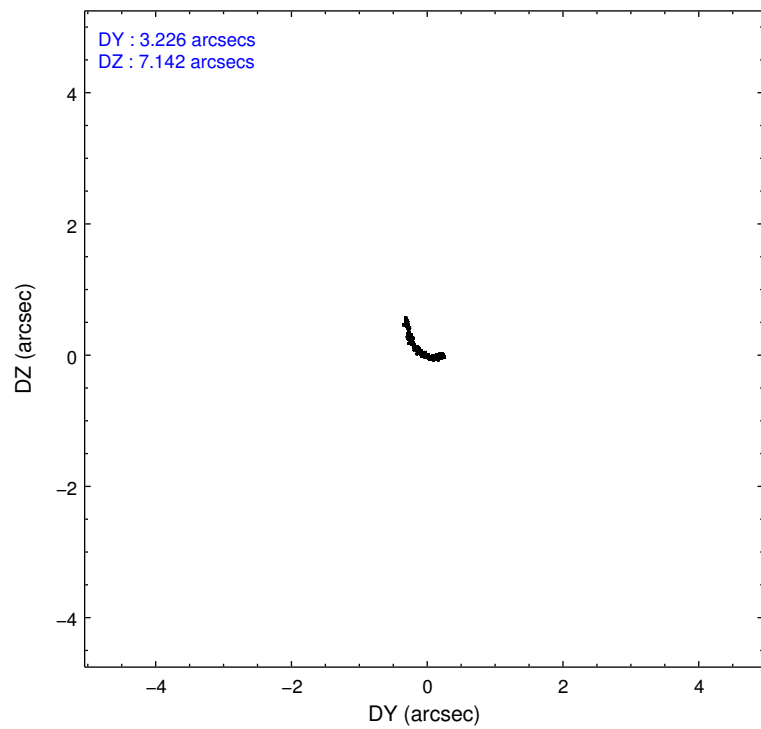
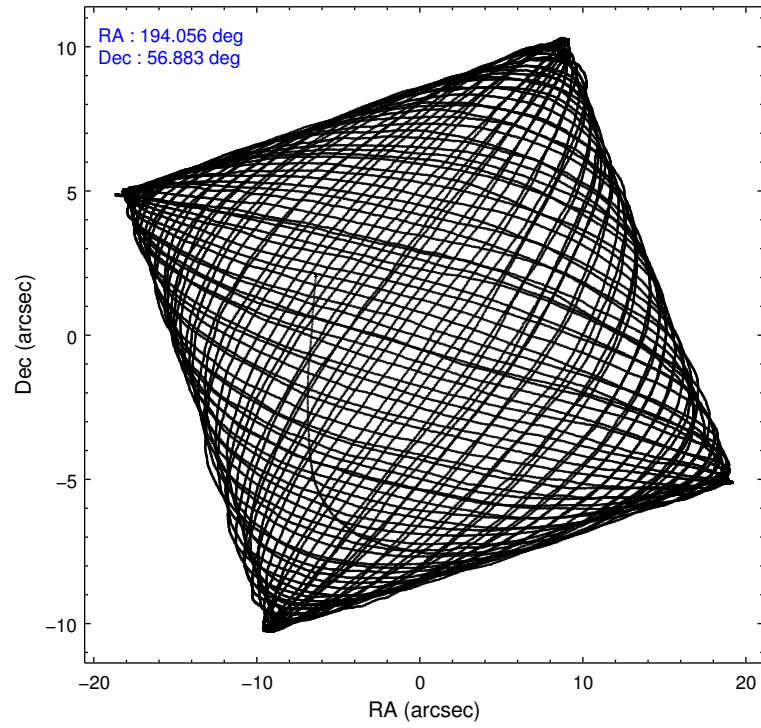
	ccd 6	ccd 7
level 1 events	144287	178028
rejected events	127618	99698
rejected %	88%	56%

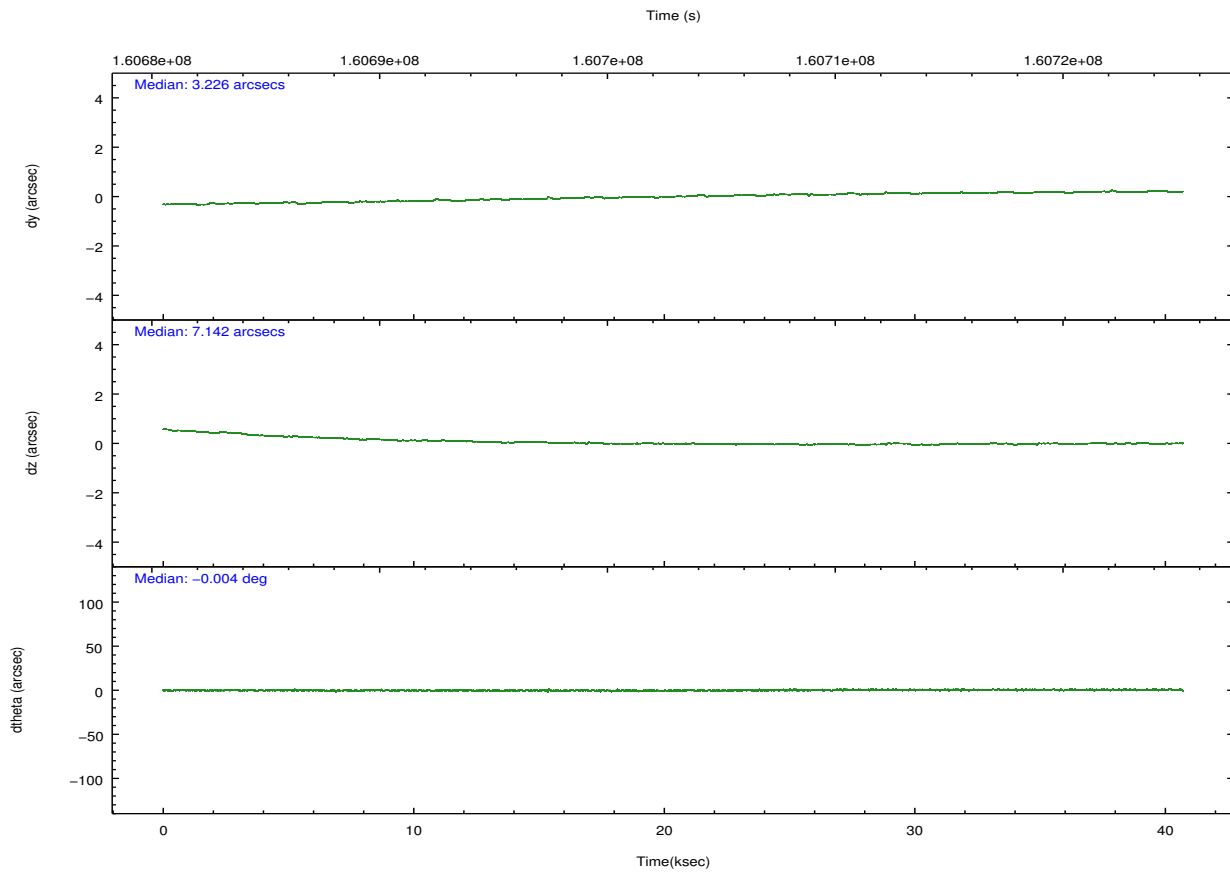
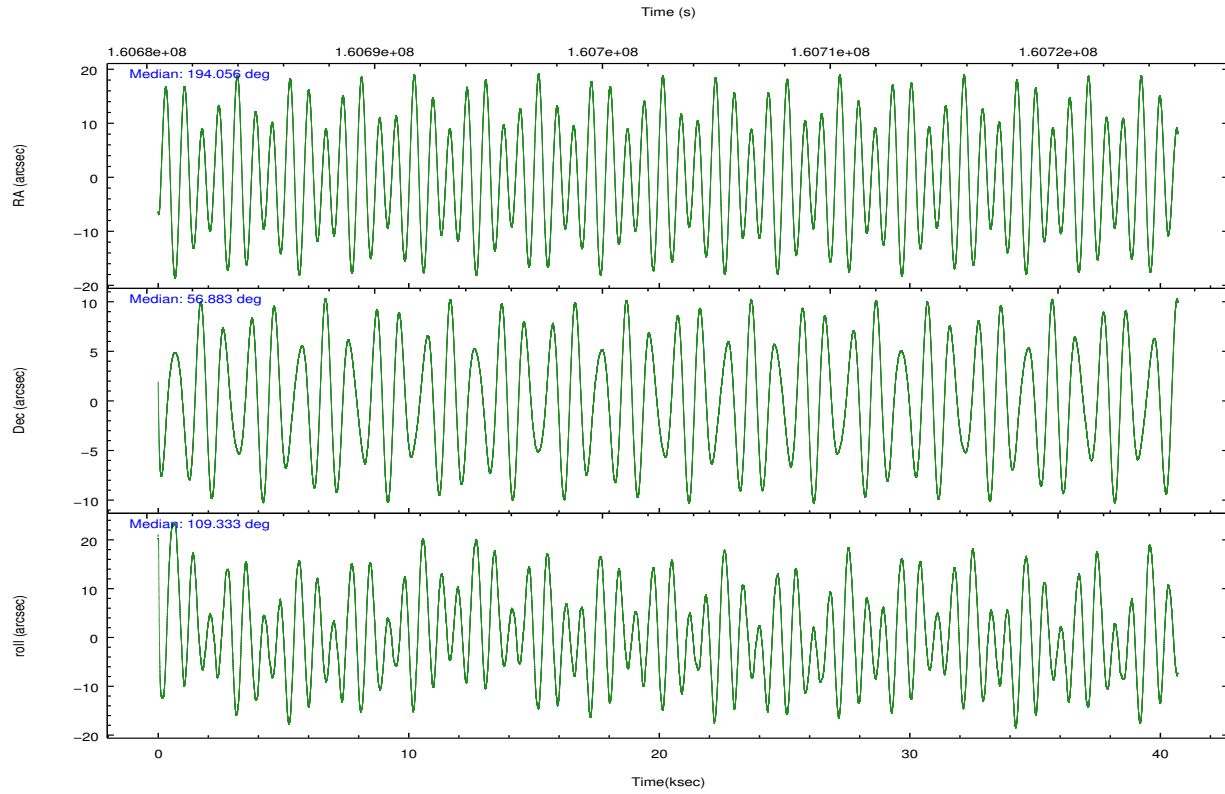
	ccd 6	ccd 7
grade 0 events	6555	8878
	4%	4%
grade 1 events	53	172
	0%	0%
grade 2 events	3081	16033
	2%	9%
grade 3 events	2041	7840
	1%	4%
grade 4 events	2054	7855
	1%	4%
grade 5 events	5877	16811
	4%	9%
grade 6 events	3142	38659
	2%	21%
grade 7 events	121484	81780
	84%	45%

2.2 Compared Parameters

Parameter	Planned	Actual	Parameter	Planned	Actual
Instrument	ACIS	ACIS	Obspar format version number	7	7
Detector	ACIS-67	ACIS-67	Obspar file type	PREDICTED	ACTUAL
Grating	NONE	NONE	Obspar update status	NONE	UPDATED
Data mode	VFAINT	VFAINT	Number of optional ACIS chips dropped	0	0
Observation mode	POINTING	POINTING	On-chip summing requested	N	N
[deg] Pointing RA	194.094541	194.05633756919	Subarray requested	CUSTOM	1/2
[deg] Pointing Dec	56.865743	56.88319027324941	Subarray start row	257	257
[deg] Pointing Roll	109.156444	109.3450772351299	Subarray row count	512	512
[mm] SIM focus pos	-0.684267	-0.6828225247311905	Alternating exposures requested	N	N
[mm] SIM defocus	0	0.001444936568705701	[s] Primary exposure time	0.000000	1.6
[mm] SIM translation stage pos	-190.132523	-190.1400660498719			
[mm] SIM translation stage offset	0	0.00754346686406393			
[s] Observation start time (MET)	160682709.184000	160681748.31435			
Observation start date	2003-02-03T18:04:05	2003-02-03T17:49:08			
[s] Observation end time (MET)	160723229.184000	160723820.46611			
Observation end date	2003-02-04T05:19:25	2003-02-04T05:30:20			
Read mode	TIMED	TIMED			

2.3 Aspect



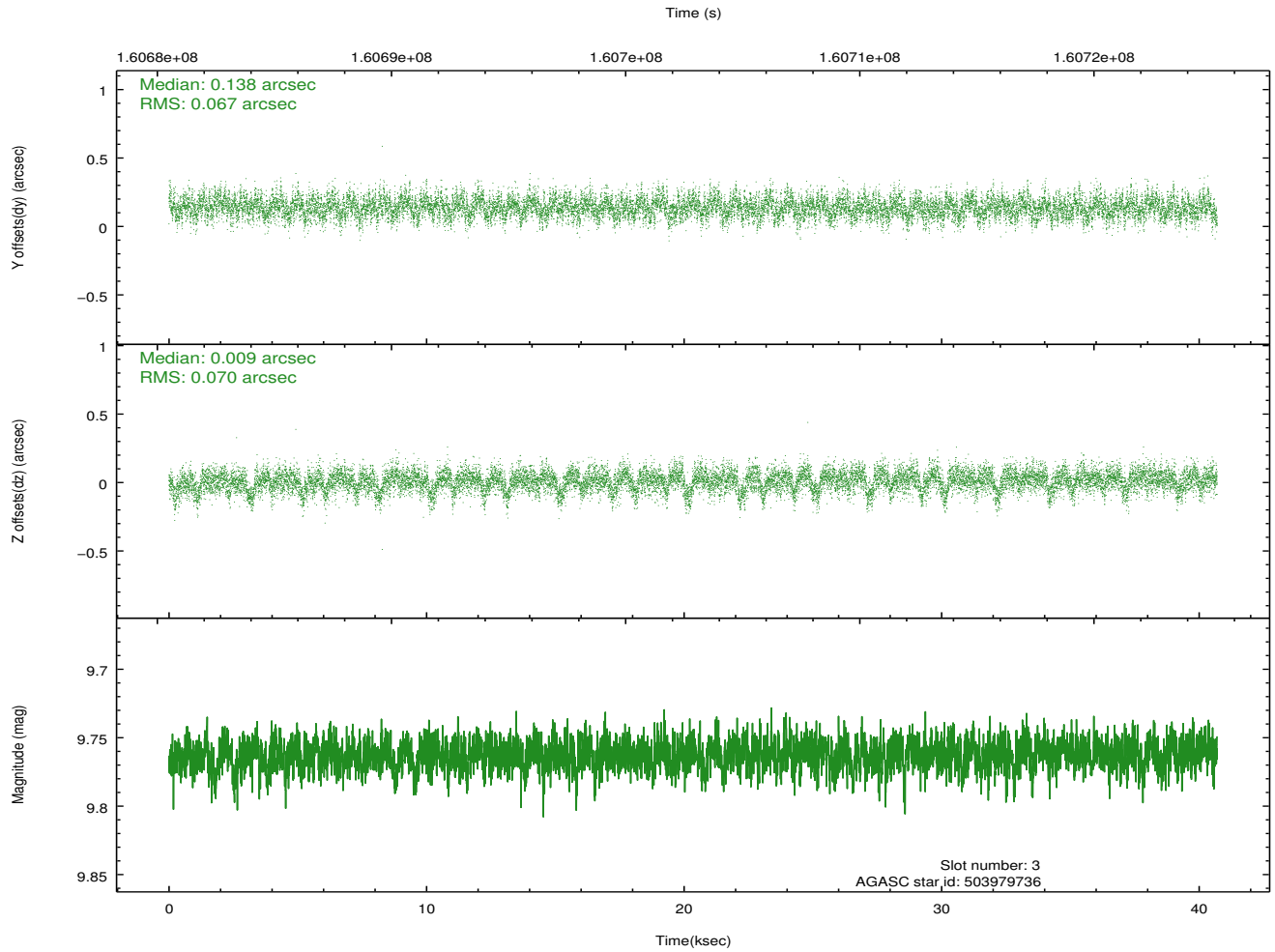
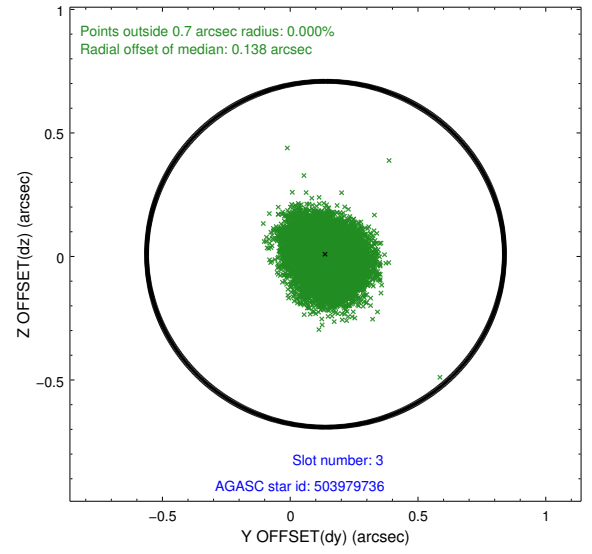
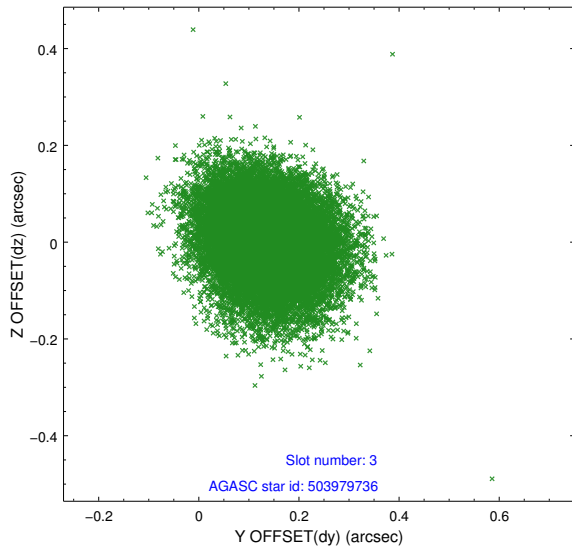


Slot Statistics

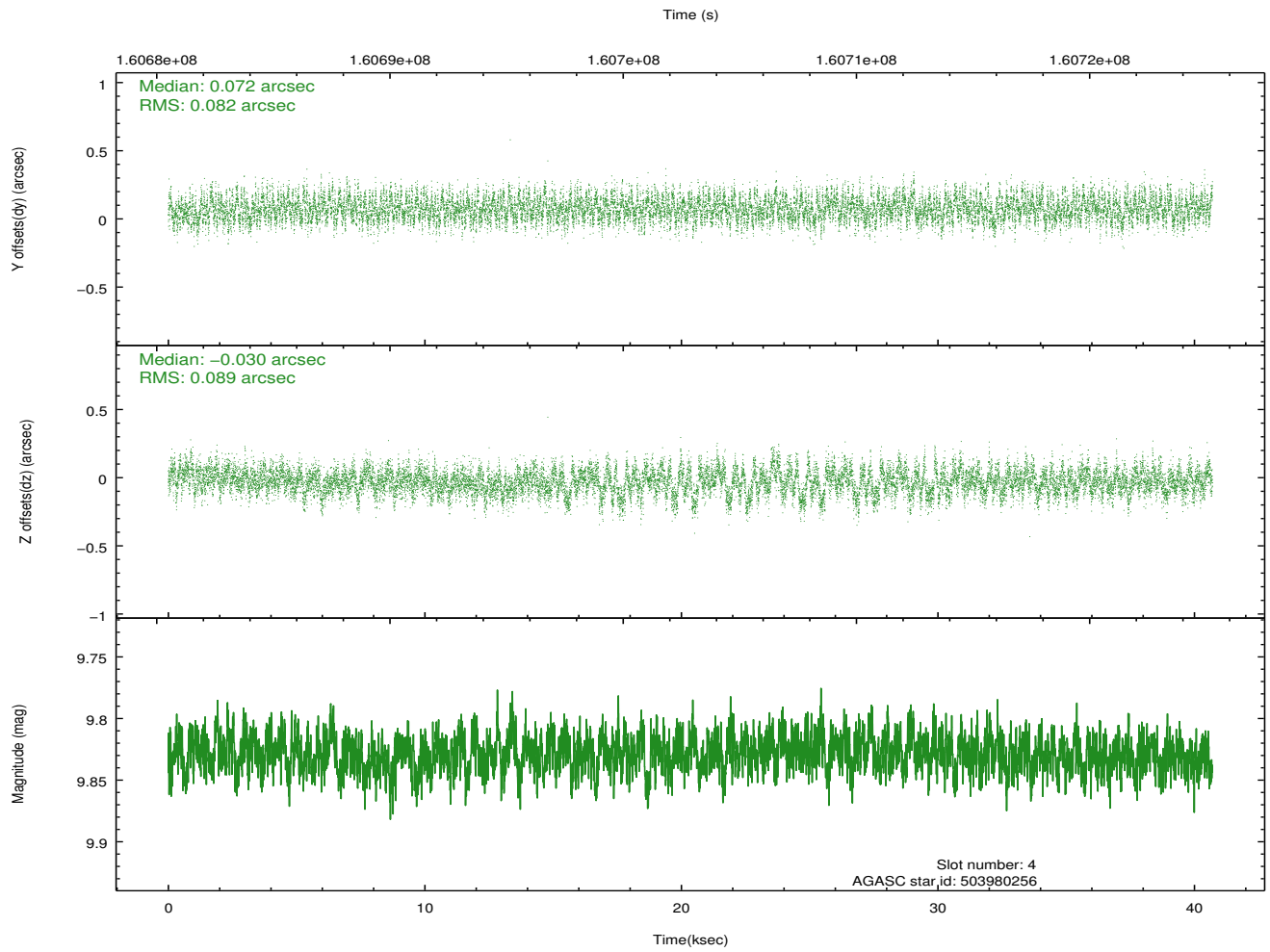
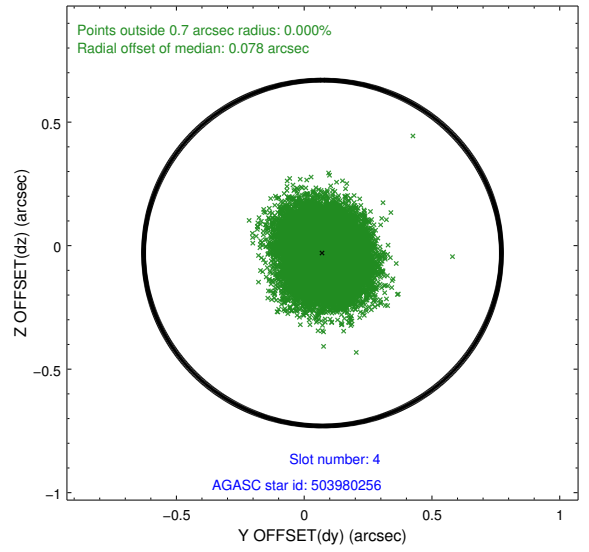
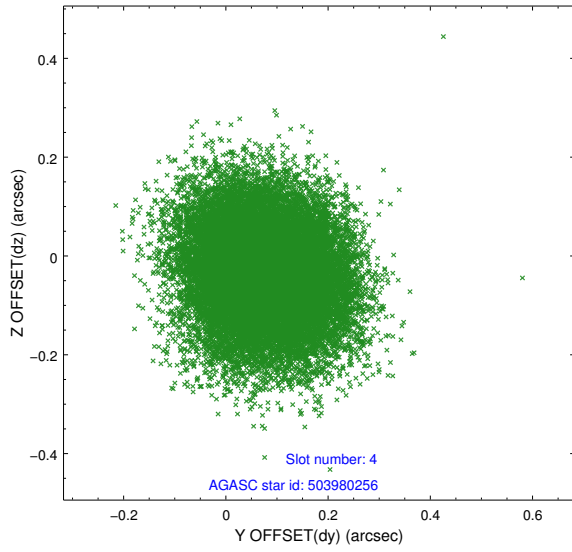
slot	status	id	mag	n_pts	med_dy	med_dz	dr1	dr2	ra	dec	mean_y	mean_z
0	FID	ACIS-S-2	7.11	9926	-0.012	0.002	0.014	0.024	0.000000	0.000000	-755.86	-1728.39
1	FID	ACIS-S-4	7.20	9926	0.001	0.008	0.011	0.017	0.000000	0.000000	2157.42	180.09
2	FID	ACIS-S-6	7.36	9926	-0.014	-0.001	0.010	0.016	0.000000	0.000000	406.13	817.49
3	GUIDE	503979736	9.76	19838	0.138	0.009	0.103	0.169	194.603351	57.079018	402.67	-1193.29
4	GUIDE	503980256	9.83	19845	0.072	-0.030	0.130	0.206	193.427147	56.429056	-1043.05	1768.54
5	GUIDE	503980496	9.70	19667	-0.108	0.186	0.129	0.205	194.652132	56.943955	-88.81	-1127.83
6	GUIDE	503980696	10.16	19760	-0.026	0.097	0.124	0.200	194.660958	56.647093	-1106.72	-802.33
7	GUIDE	503977472	8.73	19847	-0.078	-0.257	0.077	0.124	193.107383	56.634174	-133.22	2114.92

2.4 Star Slots

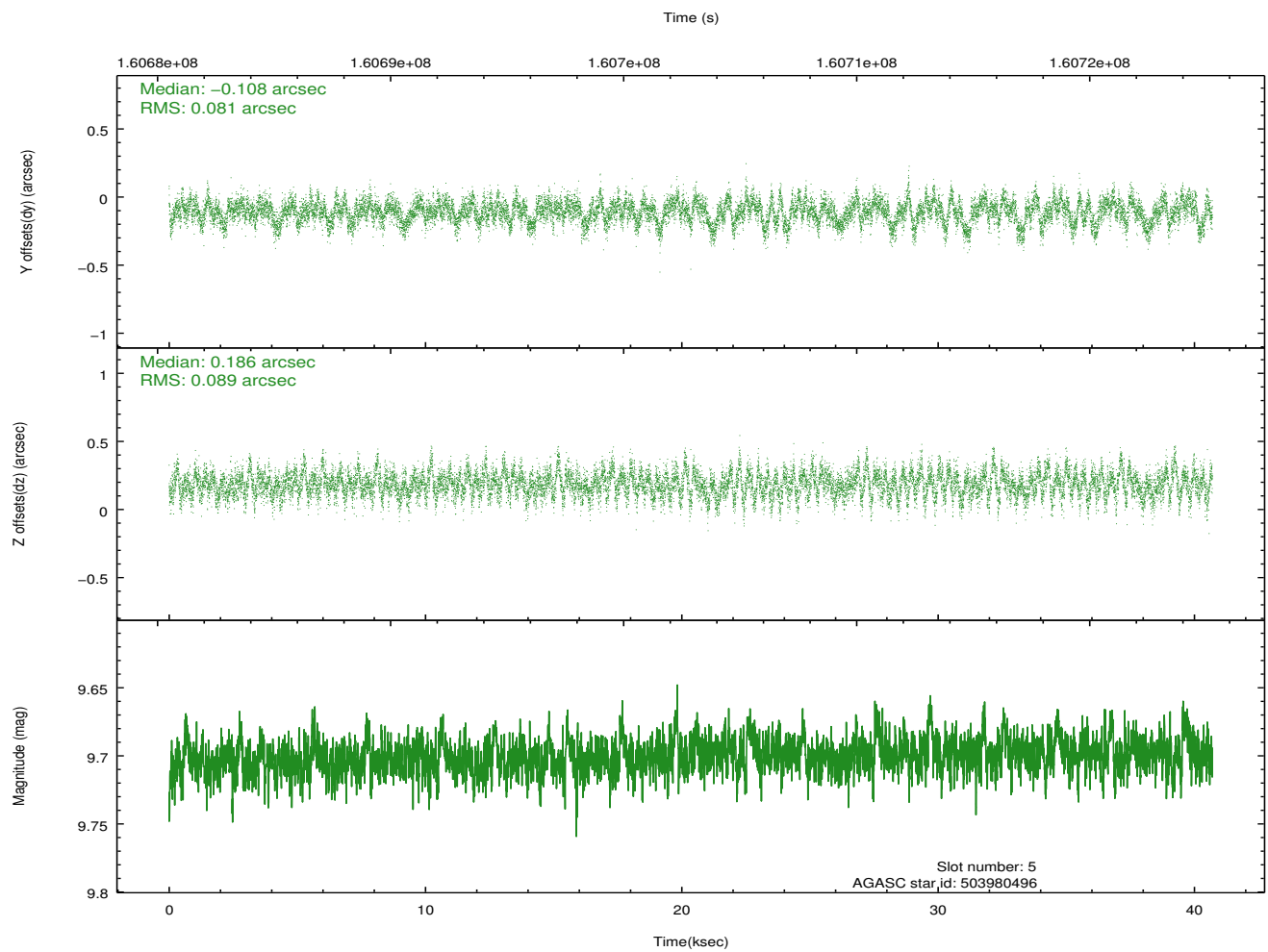
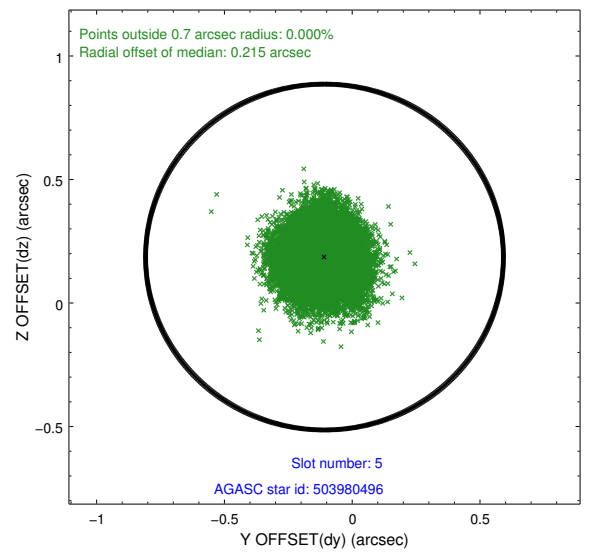
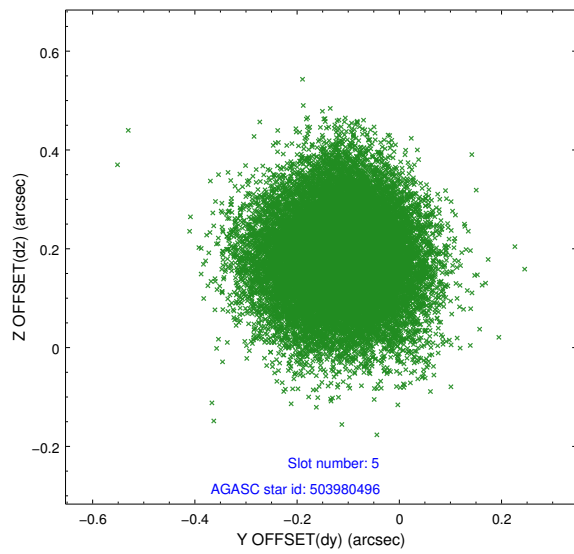
2.4.1 Slot 3



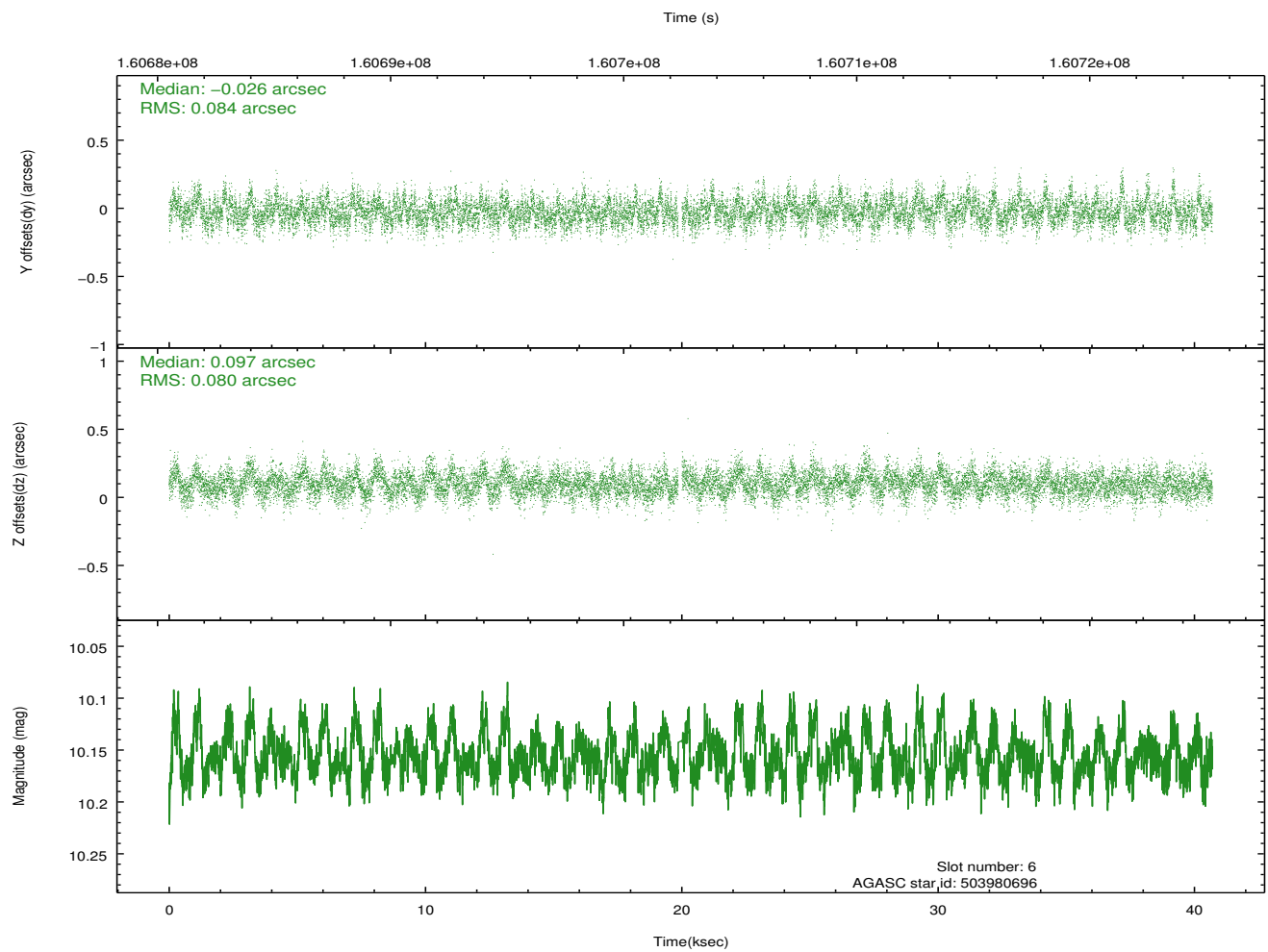
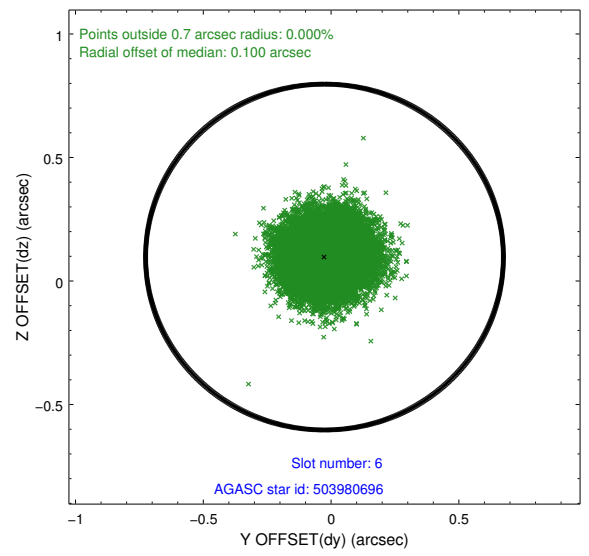
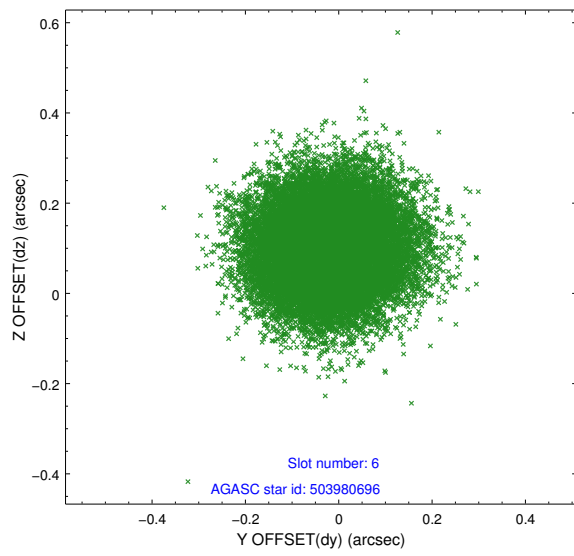
2.4.2 Slot 4



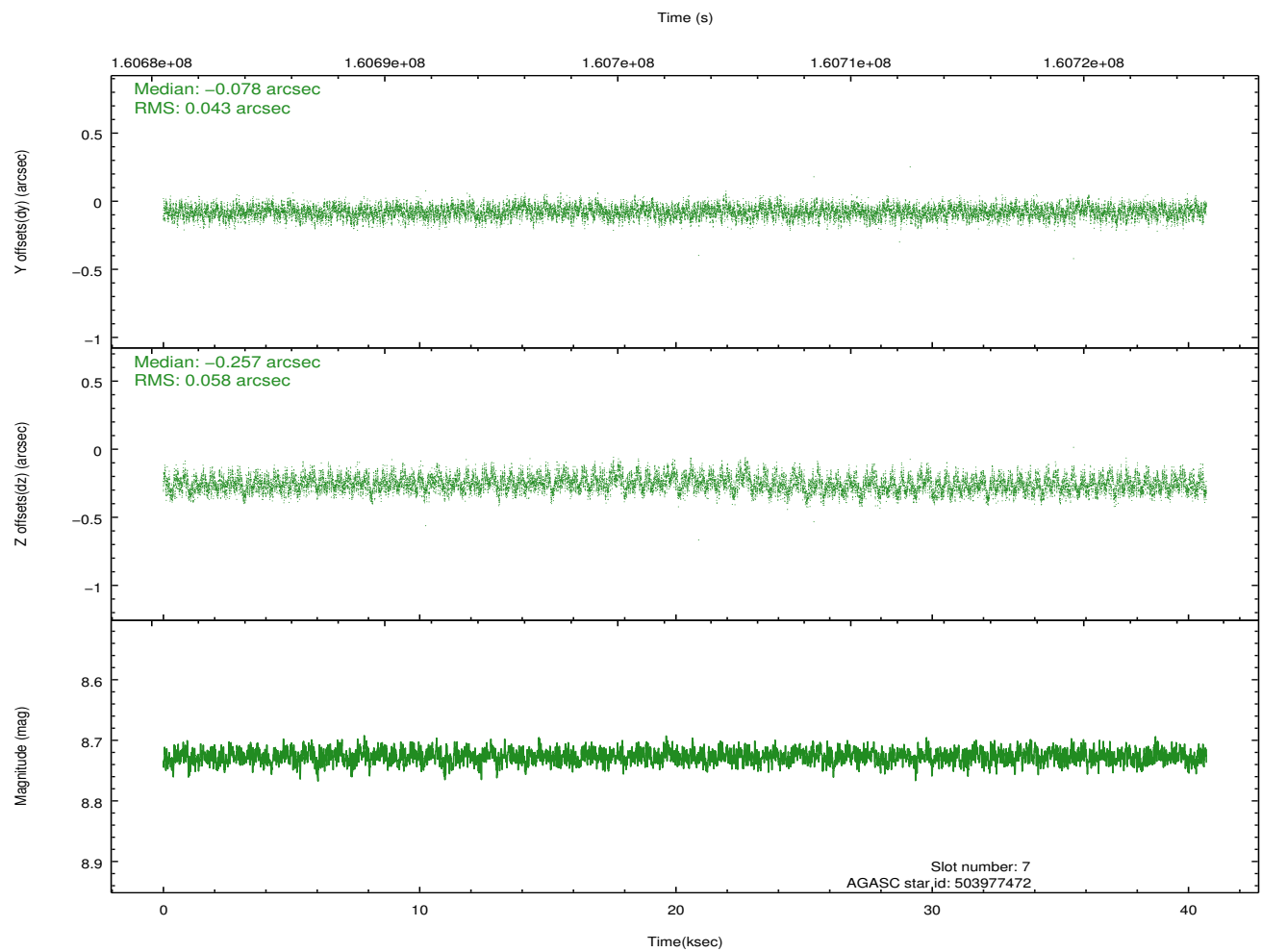
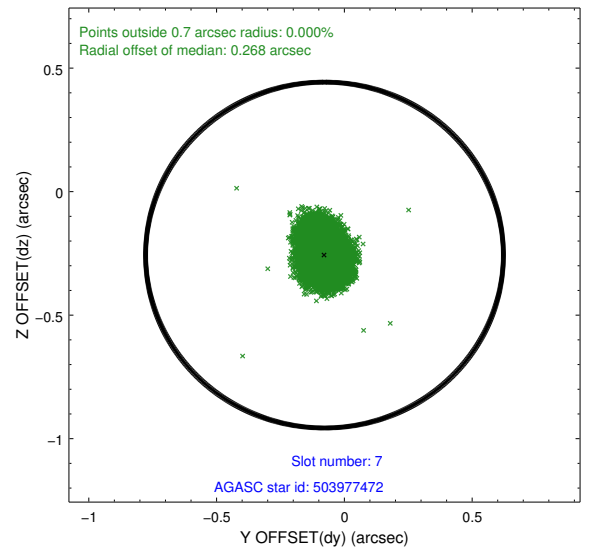
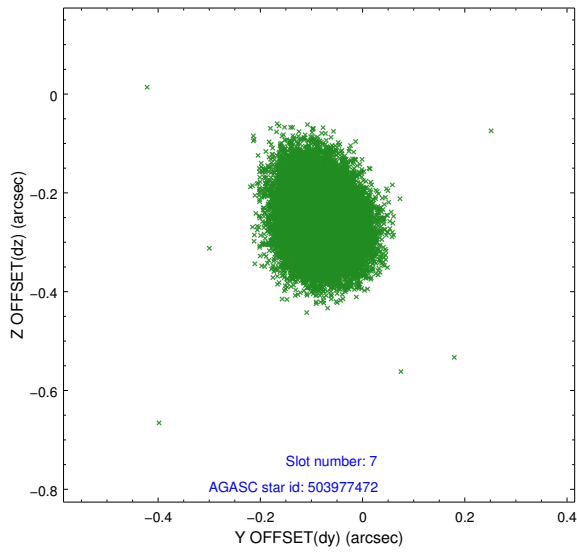
2.4.3 Slot 5



2.4.4 Slot 6

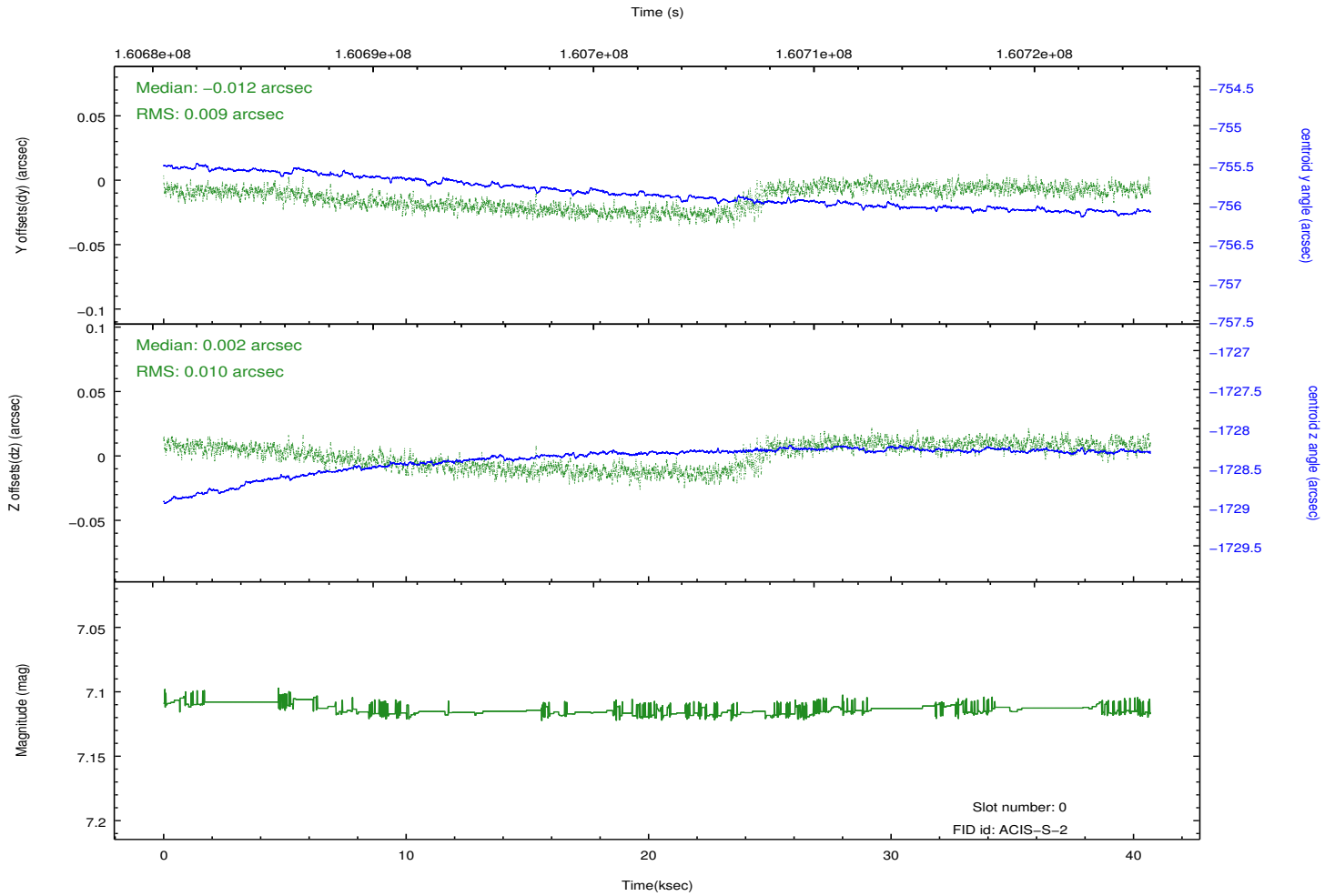
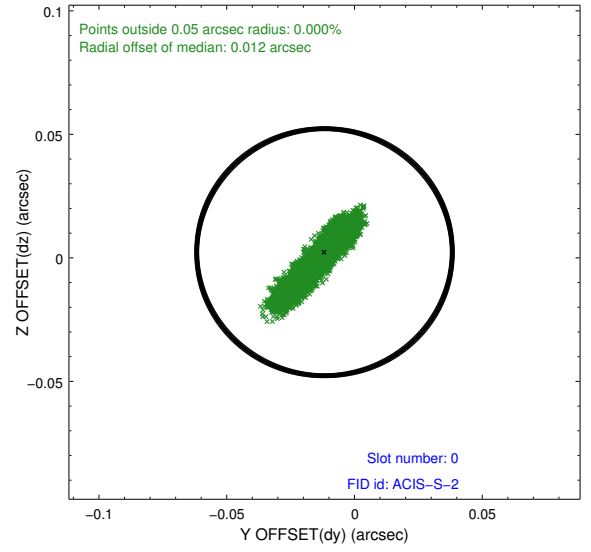
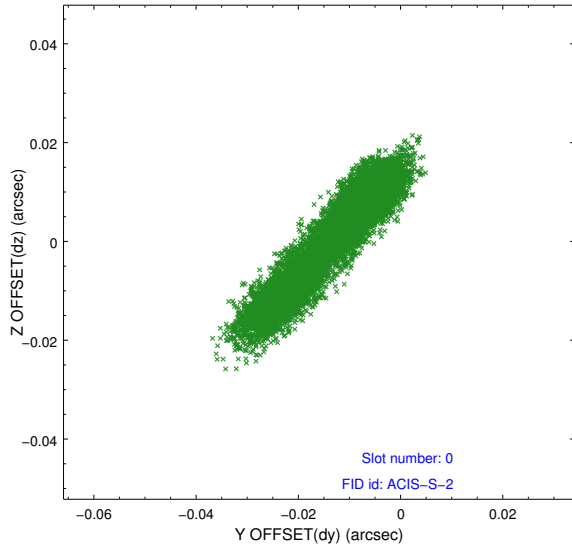


2.4.5 Slot 7

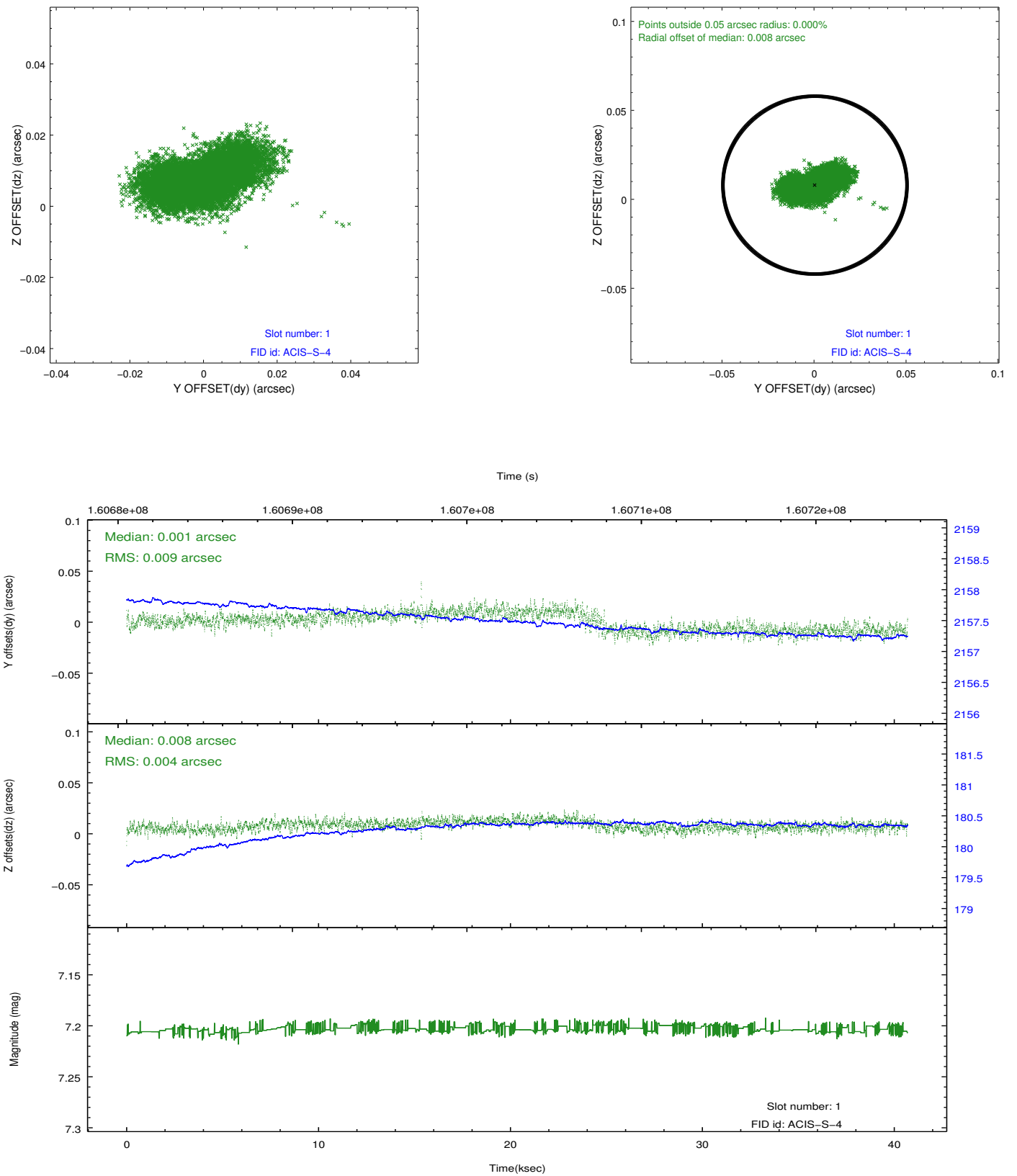


2.5 FID Slots

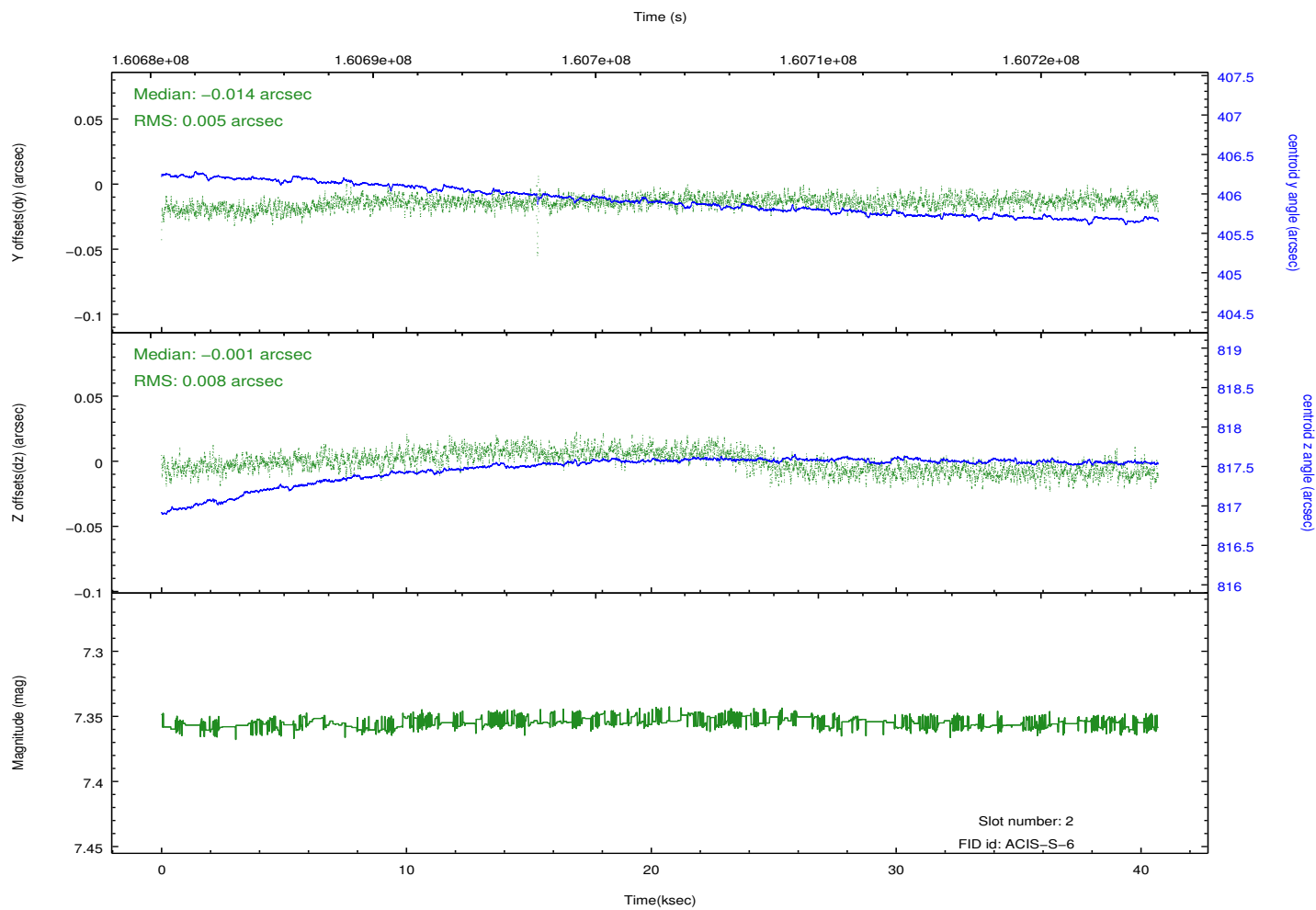
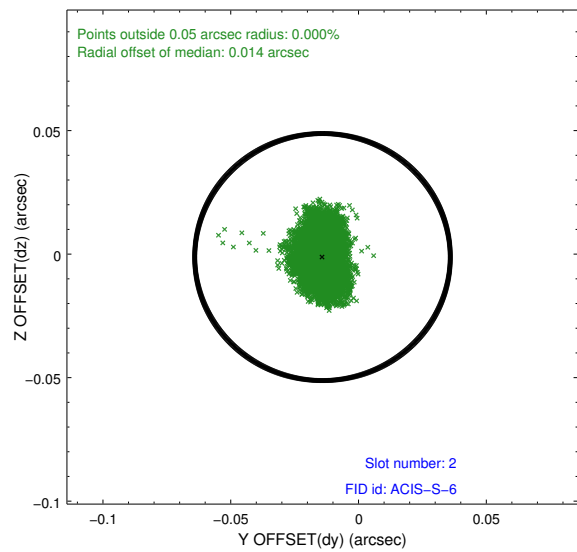
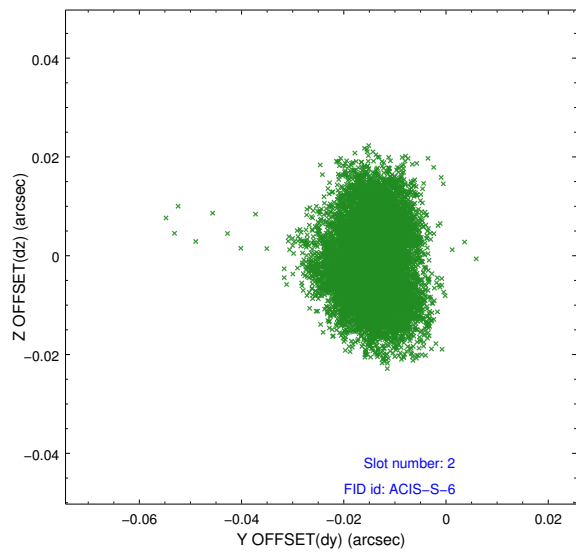
2.5.1 Slot 0



2.5.2 Slot 1



2.5.3 Slot 2



A Summary

A.1 Status

V&V Scientist	Jen Lauer
V&V Date (YYYY-MM-DD)	2012.11.05
V&V Edition	1
V&V Disposition and Status	OK
V&V Charge Time	40.7

A.2 Comments