

# V&V Reference Report

## L2 ASCDS Version : 8.5.1.1

Observation 4591 - L2 Version 5  
Chandra X-Ray Center

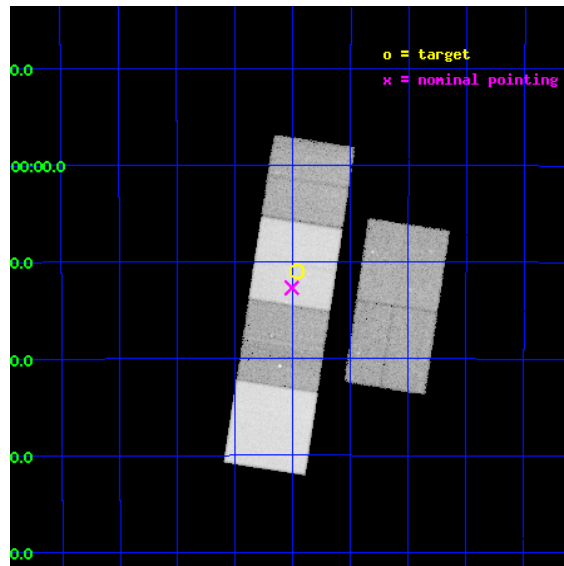
L2 Processing Date : Feb 14 2013

## Contents

<b>1</b>	<b>Front</b>	<b>2</b>
<b>2</b>	<b>OBI</b>	<b>3</b>
2.1	OBI . . . . .	3
2.1.1	Images . . . . .	3
2.1.2	Bias . . . . .	3
2.1.3	Parameters . . . . .	4
2.1.4	Events . . . . .	4
2.2	Compared Parameters . . . . .	5
2.3	Aspect . . . . .	6
2.4	Star Slots . . . . .	9
2.4.1	Slot 3 . . . . .	9
2.4.2	Slot 4 . . . . .	10
2.4.3	Slot 5 . . . . .	11
2.4.4	Slot 6 . . . . .	12
2.4.5	Slot 7 . . . . .	13
2.5	FID Slots . . . . .	14
2.5.1	Slot 0 . . . . .	14
2.5.2	Slot 1 . . . . .	15
2.5.3	Slot 2 . . . . .	16
<b>A</b>	<b>Summary</b>	<b>17</b>
A.1	Status . . . . .	17
A.2	Comments . . . . .	17

# 1 Front

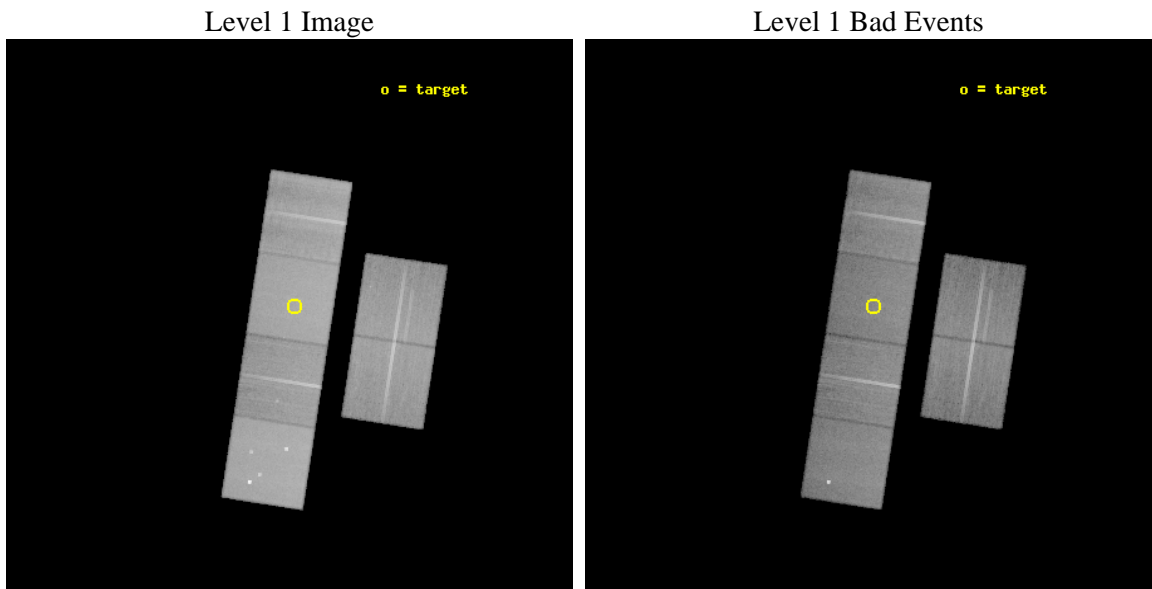
seq_num	500416	Sequence number
obs_id	4591	Observation id
title	A Chandra Search for Crab-like Supernova Remnants	Proposal title
observer	Dr. Stephen Murray	Principal investigator
object	G351.2+0.1	Source name
dtycycle	0	&#160
cycle	P	events from which exps? Prim/Second/Both
ra_targ	260.616667	Observer's specified target RA [deg]
dec_targ	-36.183333	Observer's specified target Dec [deg]
ra_nom	260.62679406038	Nominal RA [deg]
dec_nom	-36.211452524006	Nominal Dec [deg]
roll_nom	278.72650115585	Nominal Roll [deg]
revision	5	Processing version of data
ontime	41446.3998456	Sum of GTIs [s]
livetime	40921.580574729	Livetime [s]
ontime2	41158.842717439	Sum of GTIs [s]
ontime3	41170.915346116	Sum of GTIs [s]
ontime5	41446.3998456	Sum of GTIs [s]
ontime6	41190.361267656	Sum of GTIs [s]
ontime7	41446.3998456	Sum of GTIs [s]
ontime8	41204.421939999	Sum of GTIs [s]
l2events	536619	Number of level 2 events



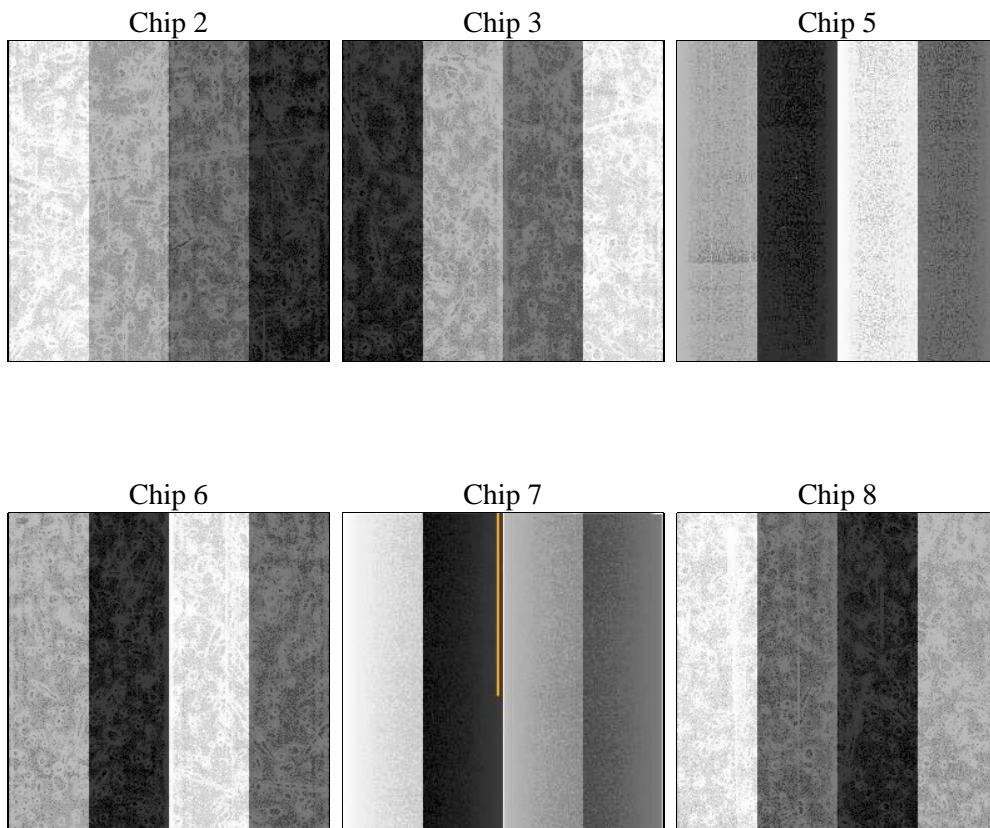
## 2 OBI

### 2.1 OBI

#### 2.1.1 Images



#### 2.1.2 Bias



### 2.1.3 Parameters

obi_num	3	Obi number	sched_exp_time	44372.218000	[s] Scheduled observation exposure time
ascdsver	8.5.1.1	Processing system revision	ontime	41446.3998456	Sum of GTIs [s]
caldbver	4.5.5	&#160	ontime2	41158.842717439	Sum of GTIs [s]
date	2013-02-14T02:49:23	Date and time of file creation	ontime3	41170.915346116	Sum of GTIs [s]
revision	5	Processing version of data	ontime5	41446.3998456	Sum of GTIs [s]
			ontime6	41190.361267656	Sum of GTIs [s]
			ontime7	41446.3998456	Sum of GTIs [s]
			ontime8	41204.421939999	Sum of GTIs [s]
			l1events	2158070	Number of level 1 events

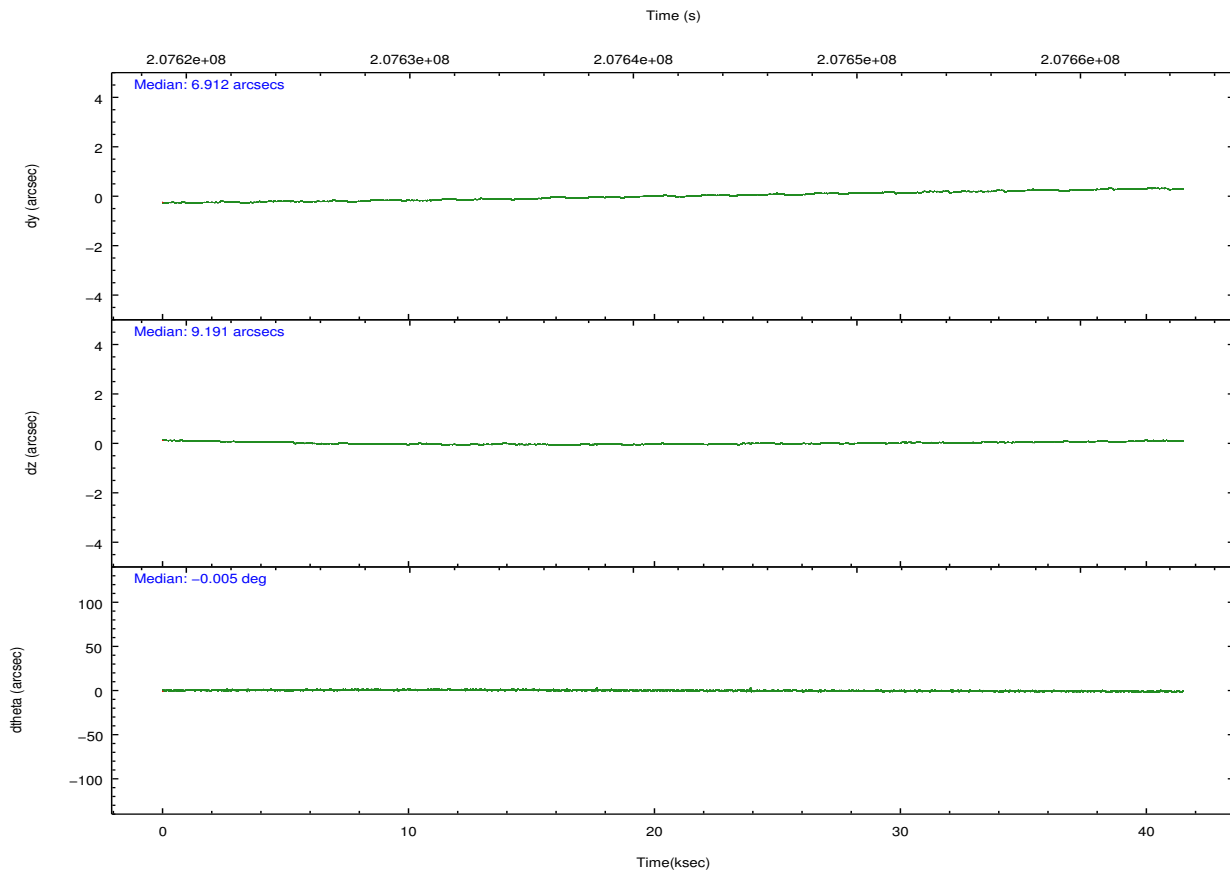
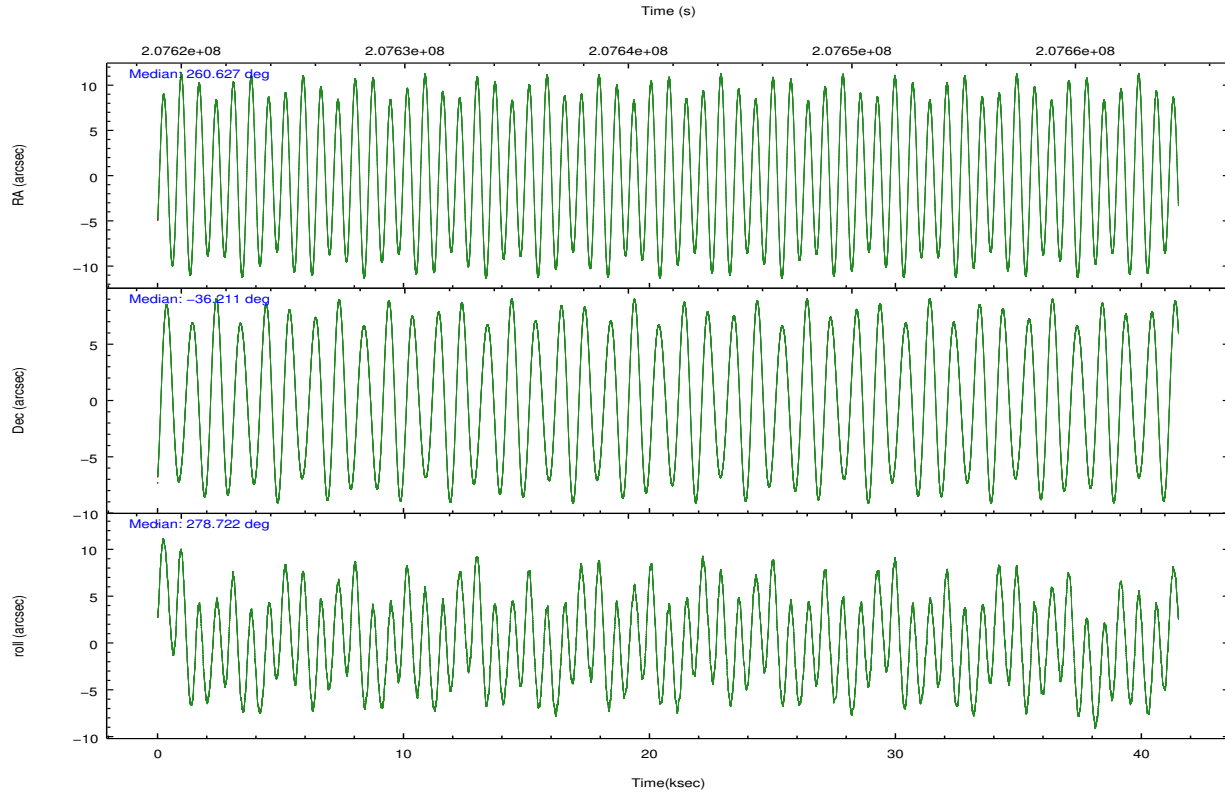
### 2.1.4 Events

	ccd 2	ccd 3	ccd 5	ccd 6	ccd 7	ccd 8		ccd 2	ccd 3	ccd 5	ccd 6	ccd 7	ccd 8
level 1 events	299131	289707	468645	301365	417629	381593	grade 0 events	19310	19499	23839	18356	17425	31197
rejected events	258663	248791	244461	259548	232880	290601		6%	6%	5%	6%	4%	8%
rejected %	86%	85%	52%	86%	55%	76%	grade 1 events	198	208	533	159	402	300
								0%	0%	0%	0%	0%	0%
							grade 2 events	7772	7385	70395	8296	36890	18801
								2%	2%	15%	2%	8%	4%
							grade 3 events	3438	3608	8516	3625	16448	9903
								1%	1%	1%	1%	3%	2%
							grade 4 events	3509	3636	8131	3708	16533	9079
								1%	1%	1%	1%	3%	2%
							grade 5 events	11406	12561	32711	13133	38122	17499
								3%	4%	6%	4%	9%	4%
							grade 6 events	6449	6824	113643	7869	97821	22077
								2%	2%	24%	2%	23%	5%
							grade 7 events	247049	235986	210877	246219	193988	272737
								82%	81%	44%	81%	46%	71%

## 2.2 Compared Parameters

Parameter	Planned	Actual	Parameter	Planned	Actual
Instrument	ACIS	ACIS	Obspar format version number	7	7
Detector	ACIS-235678	ACIS-235678	Obspar file type	PREDICTED	ACTUAL
Grating	NONE	NONE	Obspar update status	OVERRIDE	OVERRIDE
Data mode	VFAINT	VFAINT	Number of optional ACIS chips dropped	0	0
Observation mode	POINTING	POINTING	On-chip summing requested	N	N
[deg] Pointing RA	260.605317	260.6267940603751	Subarray requested	NONE	NONE
[deg] Pointing Dec	-36.190440	-36.21145252400589	Alternating exposures requested	N	N
[deg] Pointing Roll	278.557189	278.7265011558524	[s] Primary exposure time	3.2	3.2
[mm] SIM focus pos	-0.6828225247311905	-0.6828225247311905			
[mm] SIM defocus	0.001444942264670179	0.001444942264670179			
[mm] SIM translation stage pos	-190.1400660498719	-190.1400660498719			
[mm] SIM translation stage offset	0.007542945904702947	0.007542945904702947			
[s] Observation start time (MET)	207621029.184000	207621029.184			
Observation start date	2004-07-31T00:29:25	2004-07-31T00:30:29			
[s] Observation end time (MET)	207662534.000000	207662534			
Observation end date	2004-07-31T12:02:14	2004-07-31T12:02:13			
Read mode	TIMED	TIMED			

## 2.3 Aspect



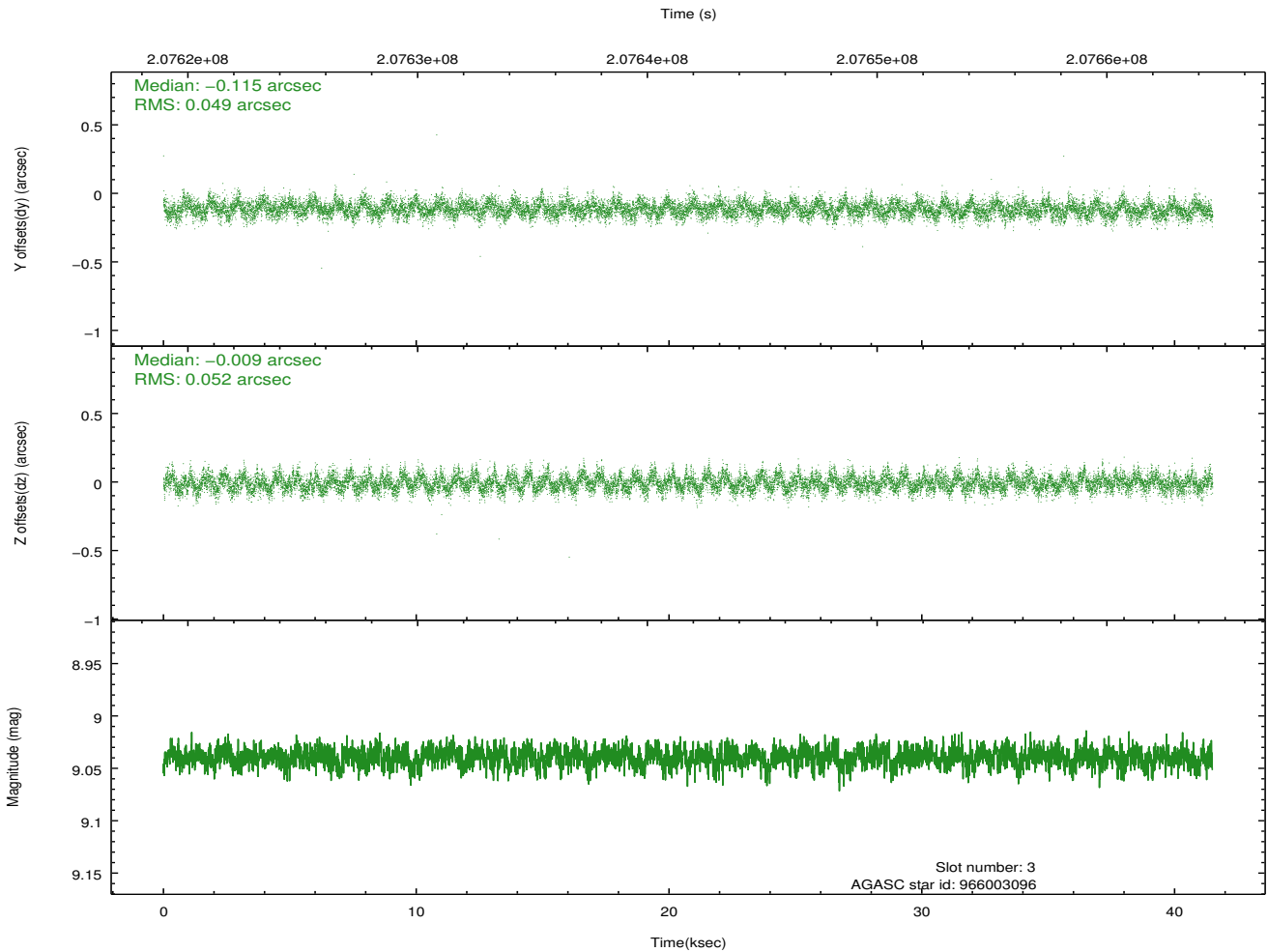
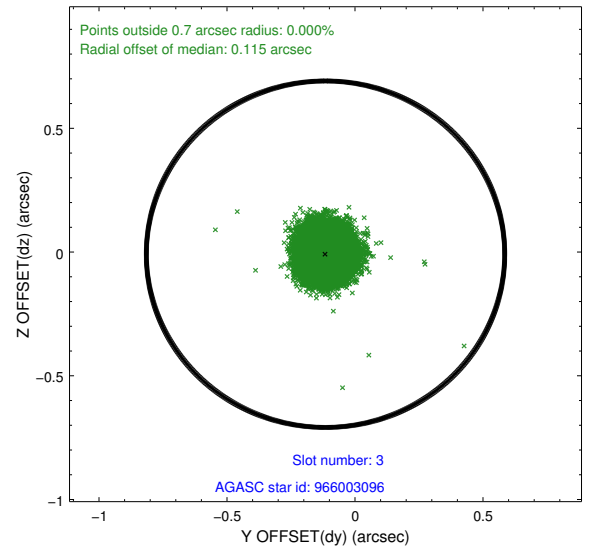
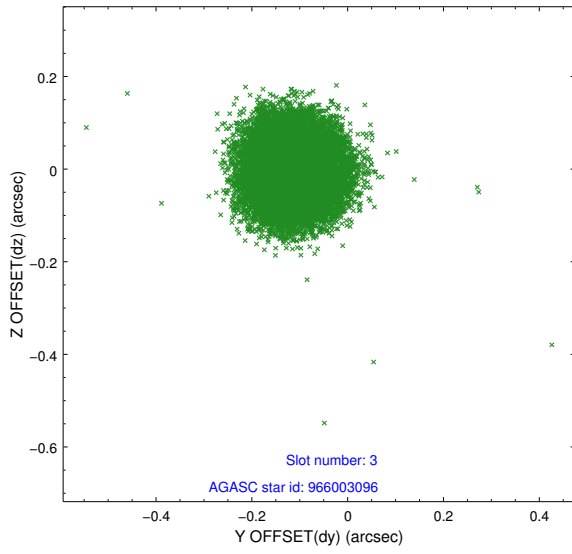
### Slot Statistics

slot	status	id	mag	n_pts	med_dy	med_dz	dr1	dr2	ra	dec	mean_y	mean_z
0	FID	ACIS-S-1	7.19	10123	0.036	-0.012	0.009	0.016	0.000000	0.000000	936.40	-1726.07
1	FID	ACIS-S-5	7.24	10123	-0.065	0.032	0.009	0.016	0.000000	0.000000	-1812.69	171.53
2	FID	ACIS-S-6	7.35	10122	0.008	-0.008	0.007	0.012	0.000000	0.000000	401.92	815.45
3	GUIDE	966003096	9.04	20238	-0.115	-0.009	0.076	0.123	260.360642	-35.600982	-2203.71	-392.63
4	GUIDE	966530176	8.78	20233	0.098	-0.008	0.067	0.108	260.167913	-36.682742	1568.09	-1512.67
5	GUIDE	966530504	9.02	20242	0.005	-0.054	0.079	0.125	260.219400	-36.072372	-584.56	-1047.53
6	GUIDE	966530544	8.77	20238	0.145	0.092	0.114	0.171	260.631187	-36.513761	1162.80	-98.93
7	GUIDE	966532344	9.30	20238	-0.132	-0.017	0.114	0.176	259.784322	-35.840467	-1591.88	-2183.31

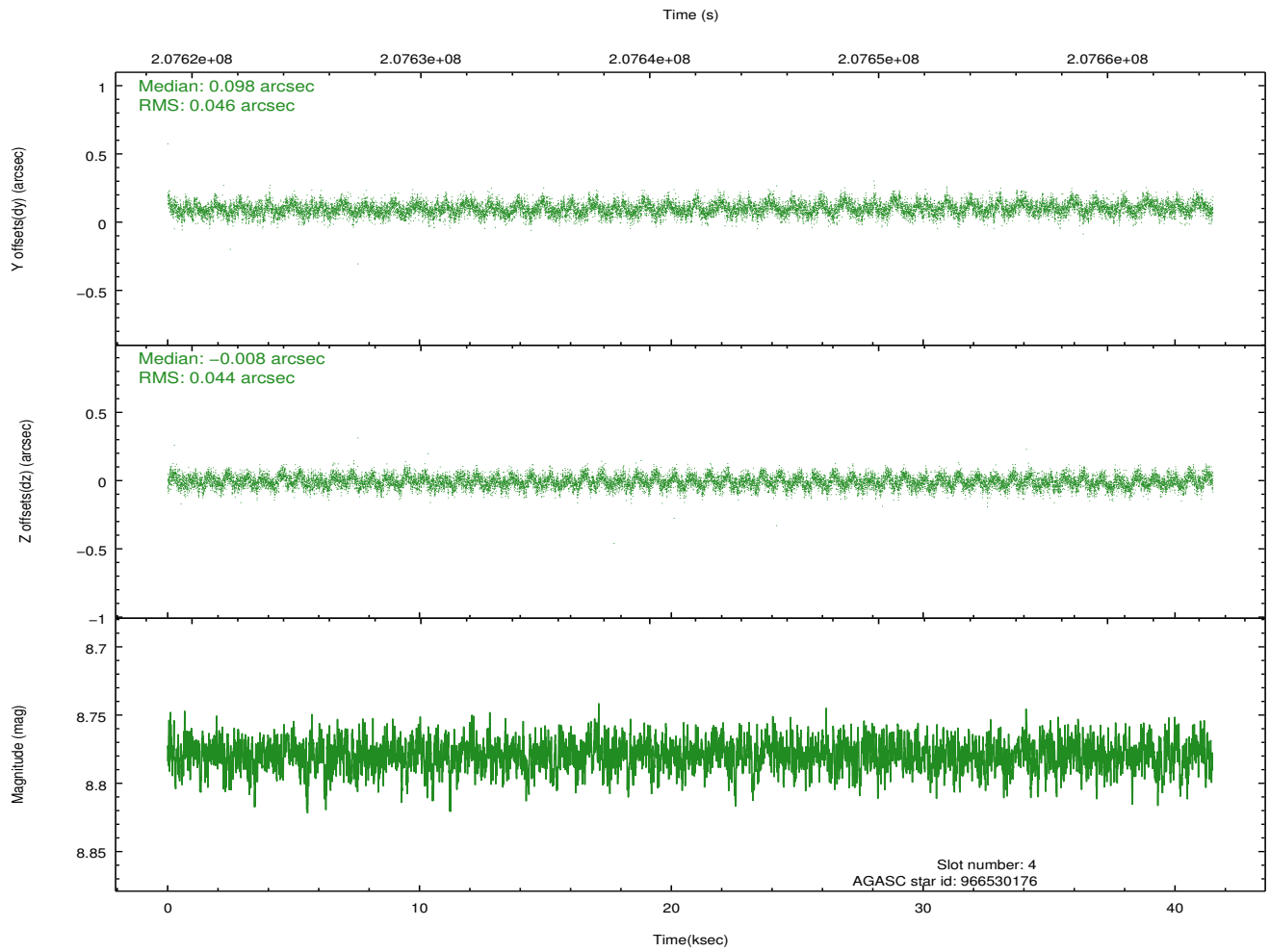
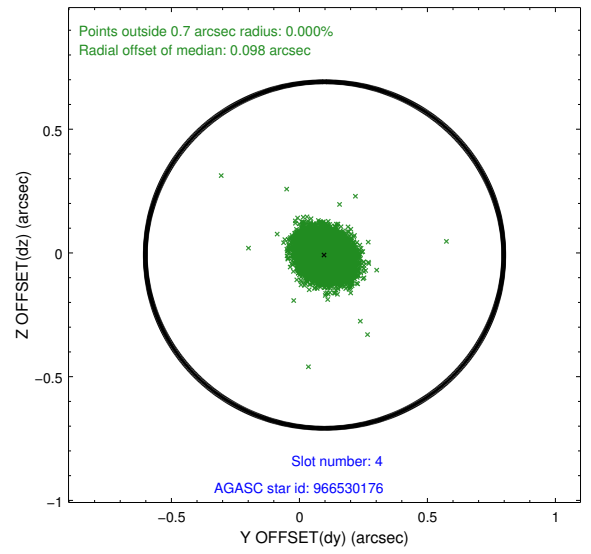
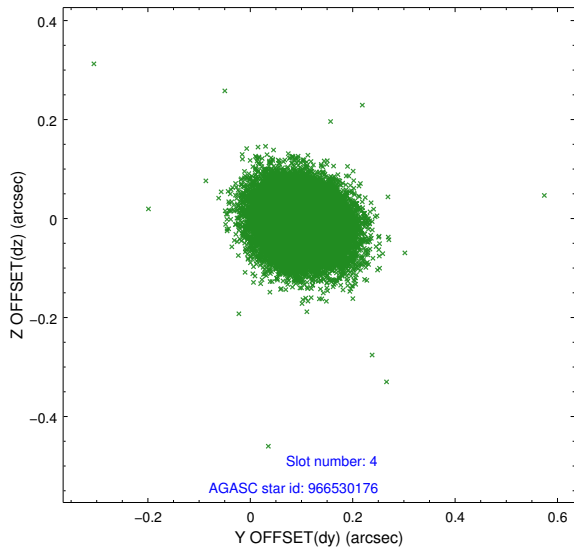
∞

## 2.4 Star Slots

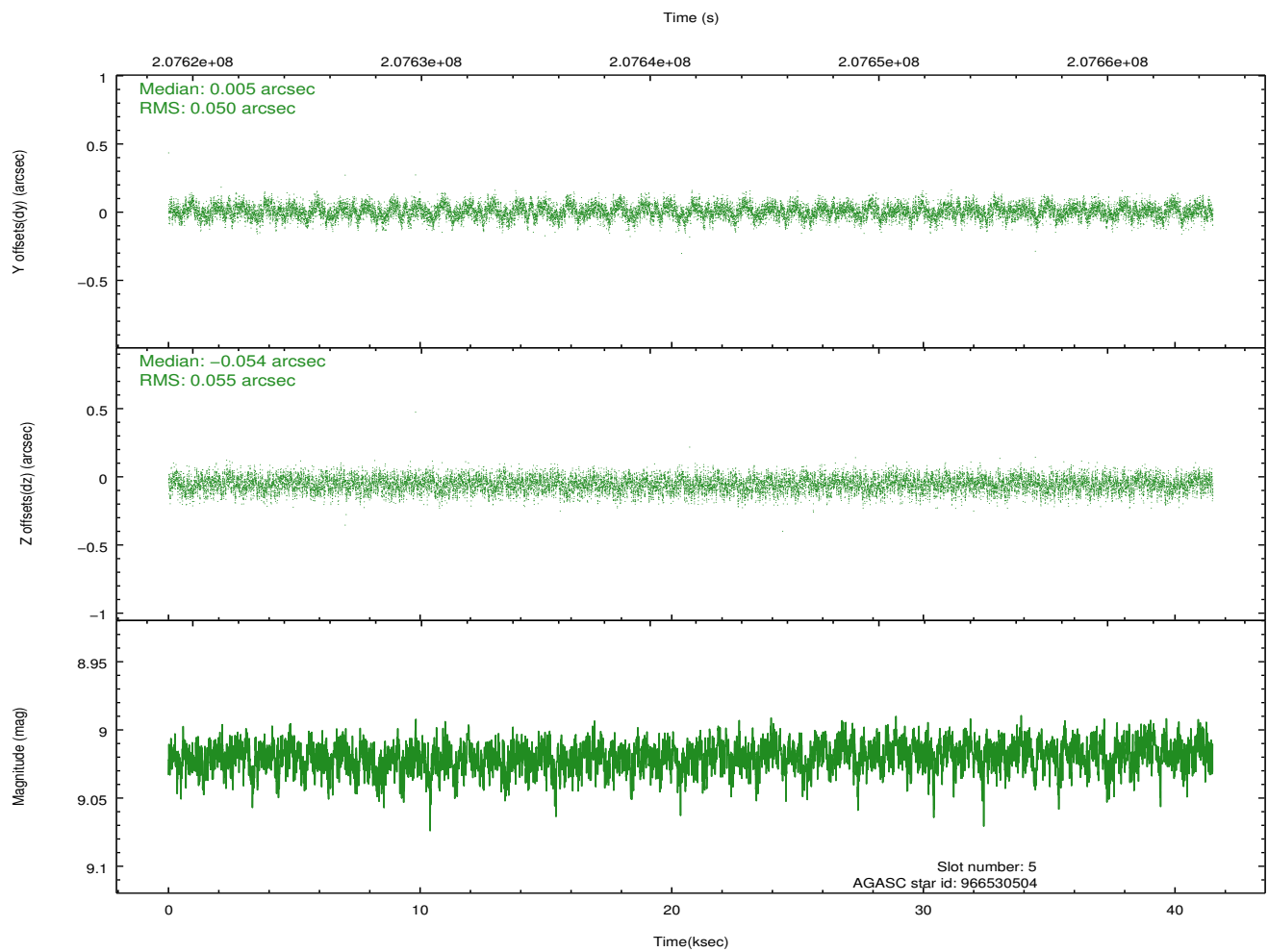
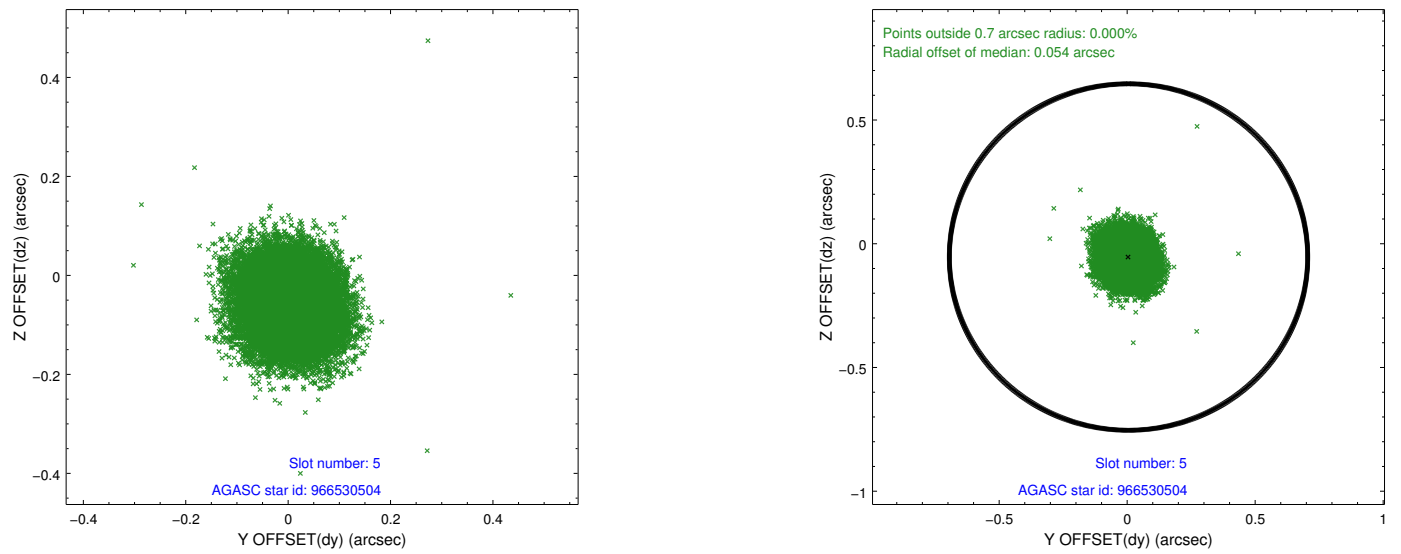
### 2.4.1 Slot 3



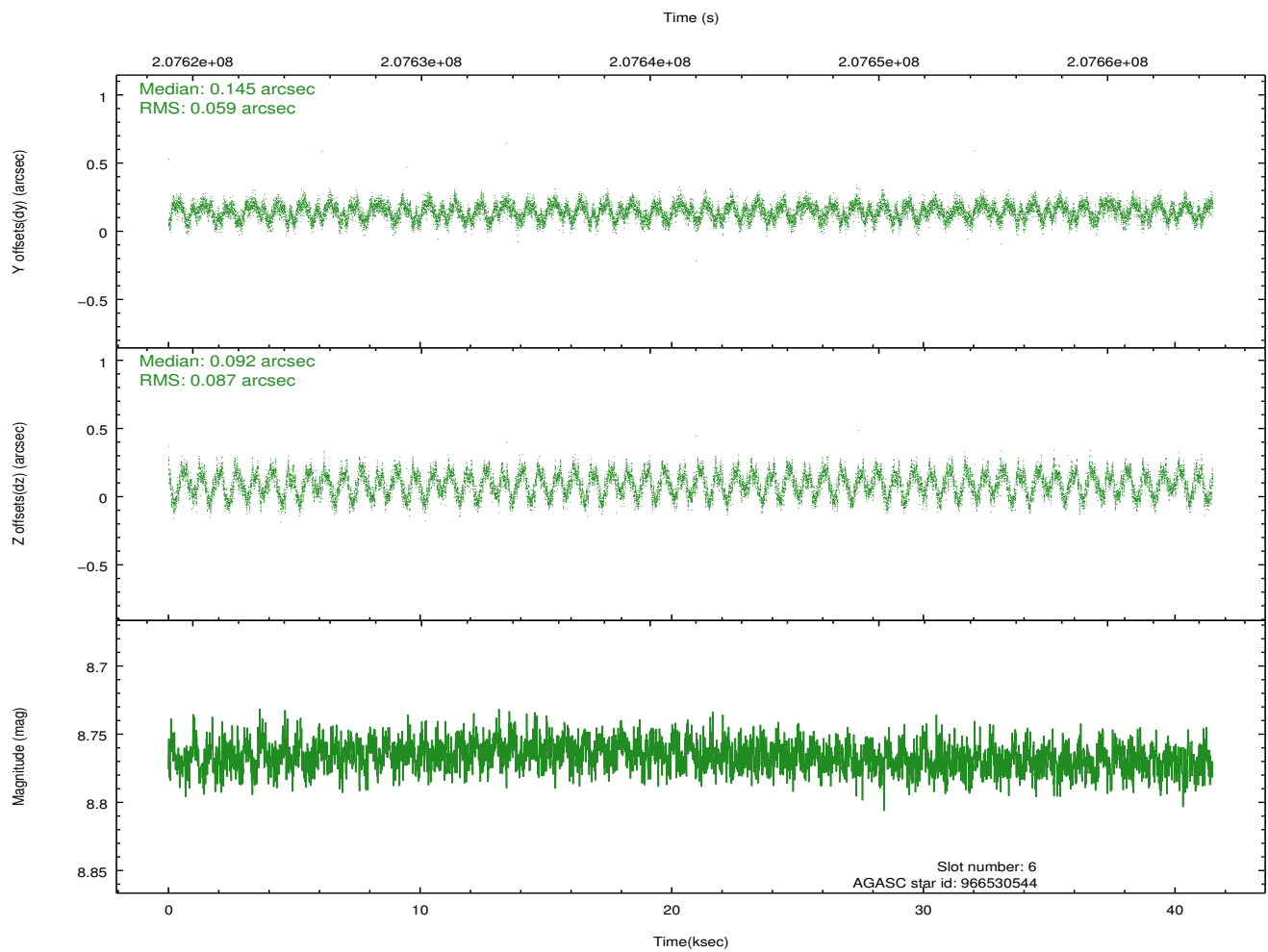
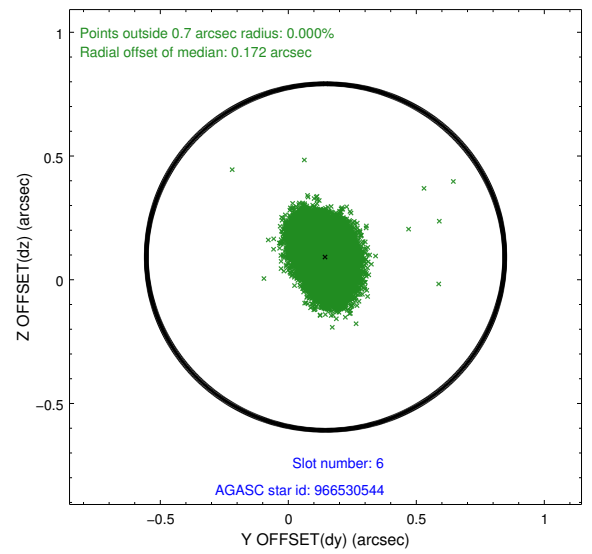
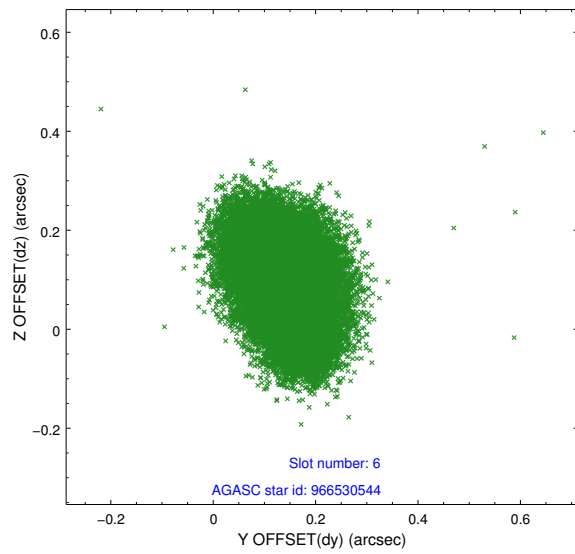
## 2.4.2 Slot 4



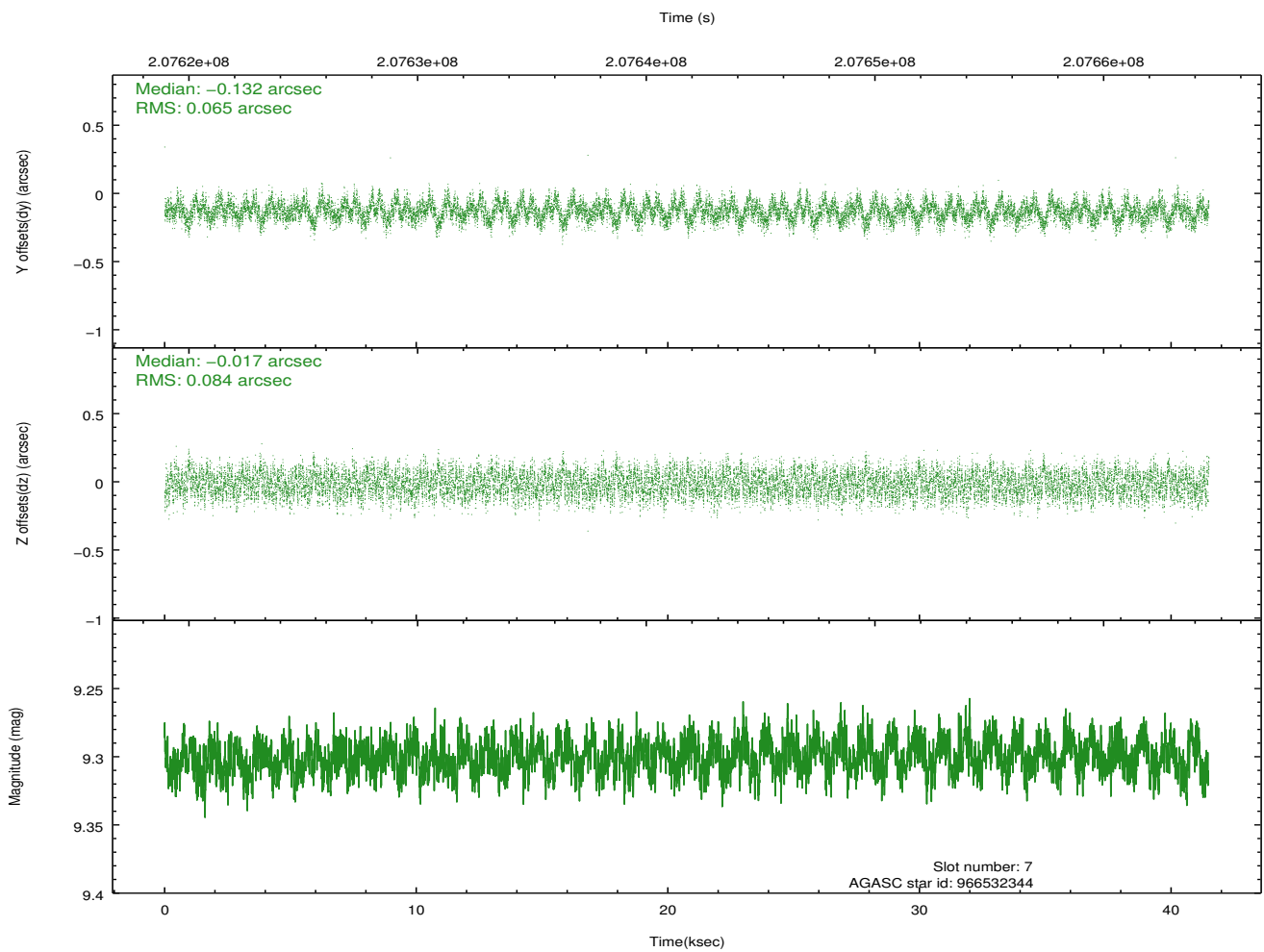
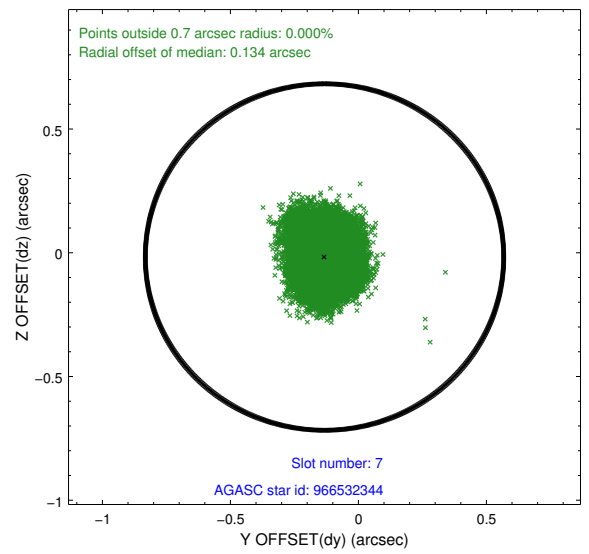
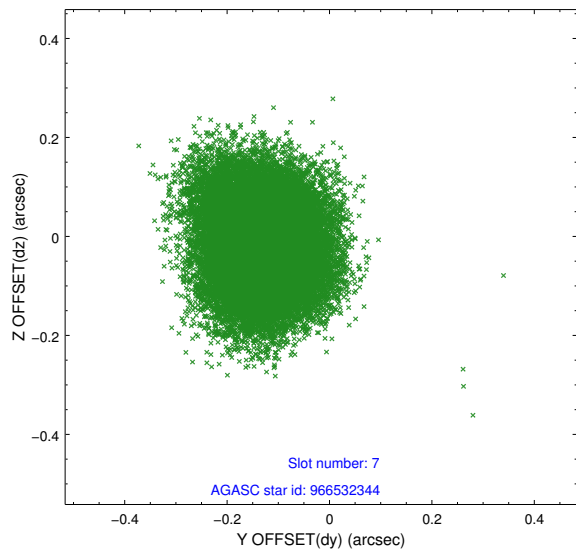
### 2.4.3 Slot 5



### 2.4.4 Slot 6

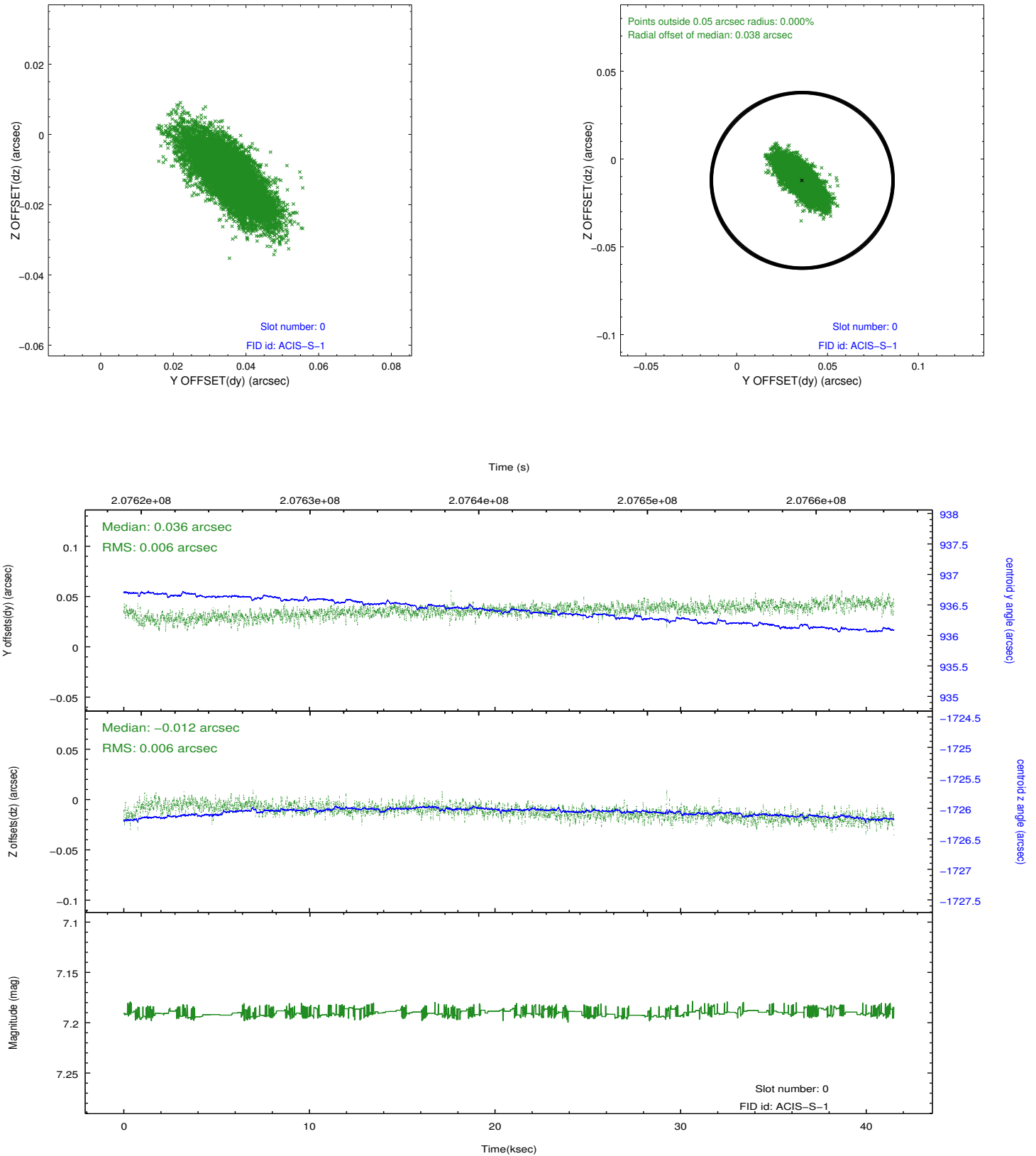


## 2.4.5 Slot 7

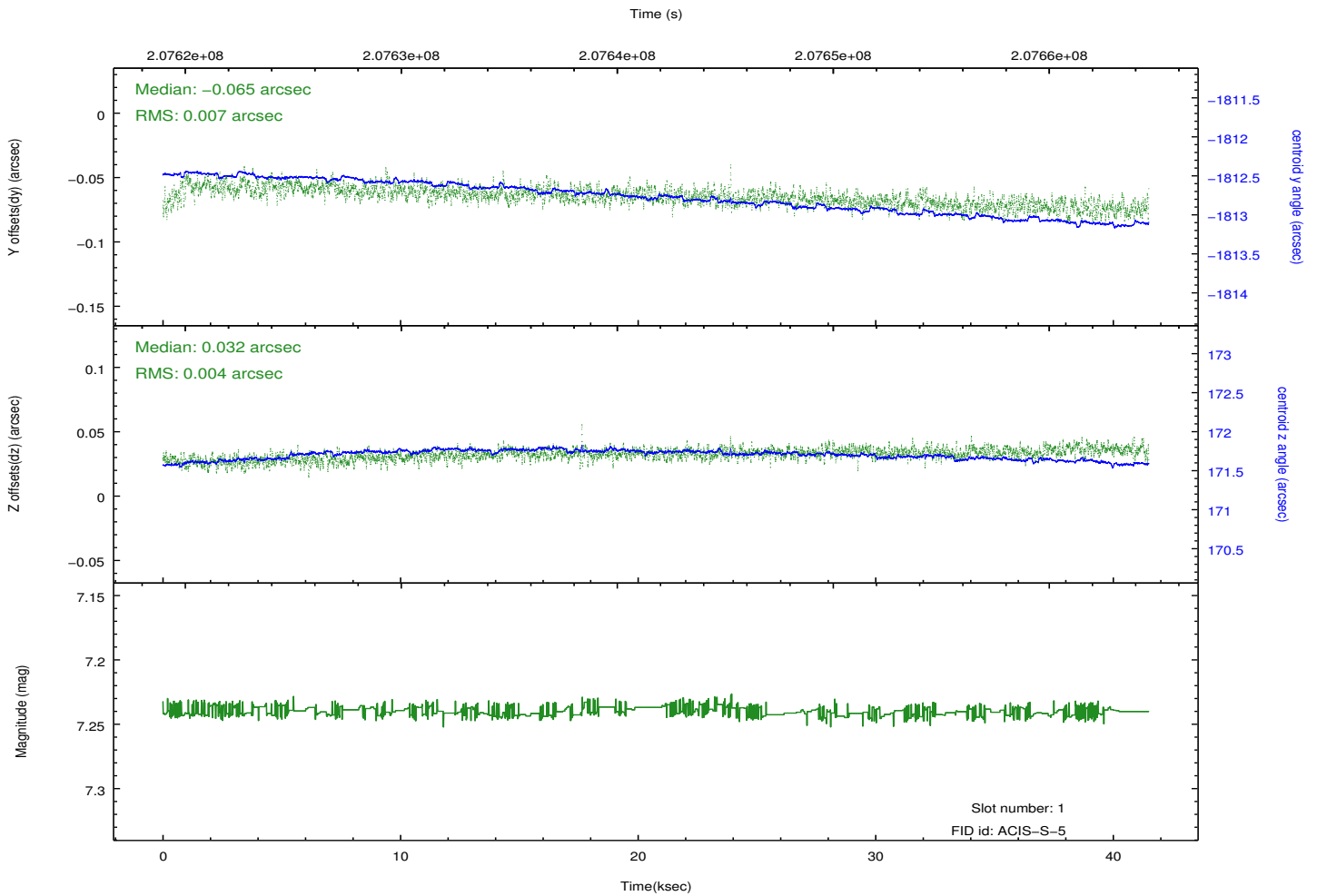
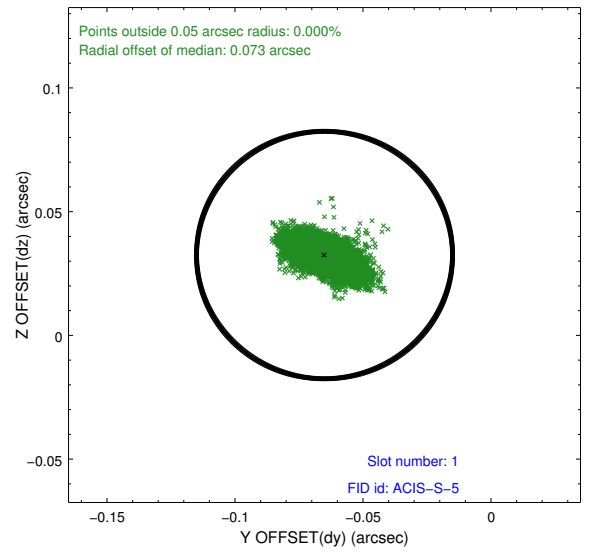
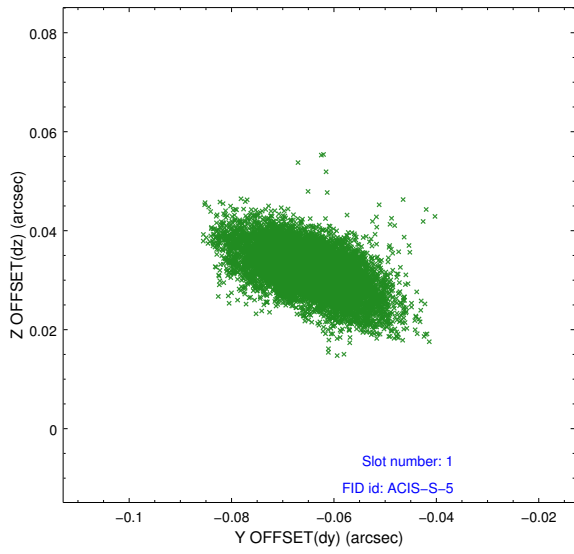


## 2.5 FID Slots

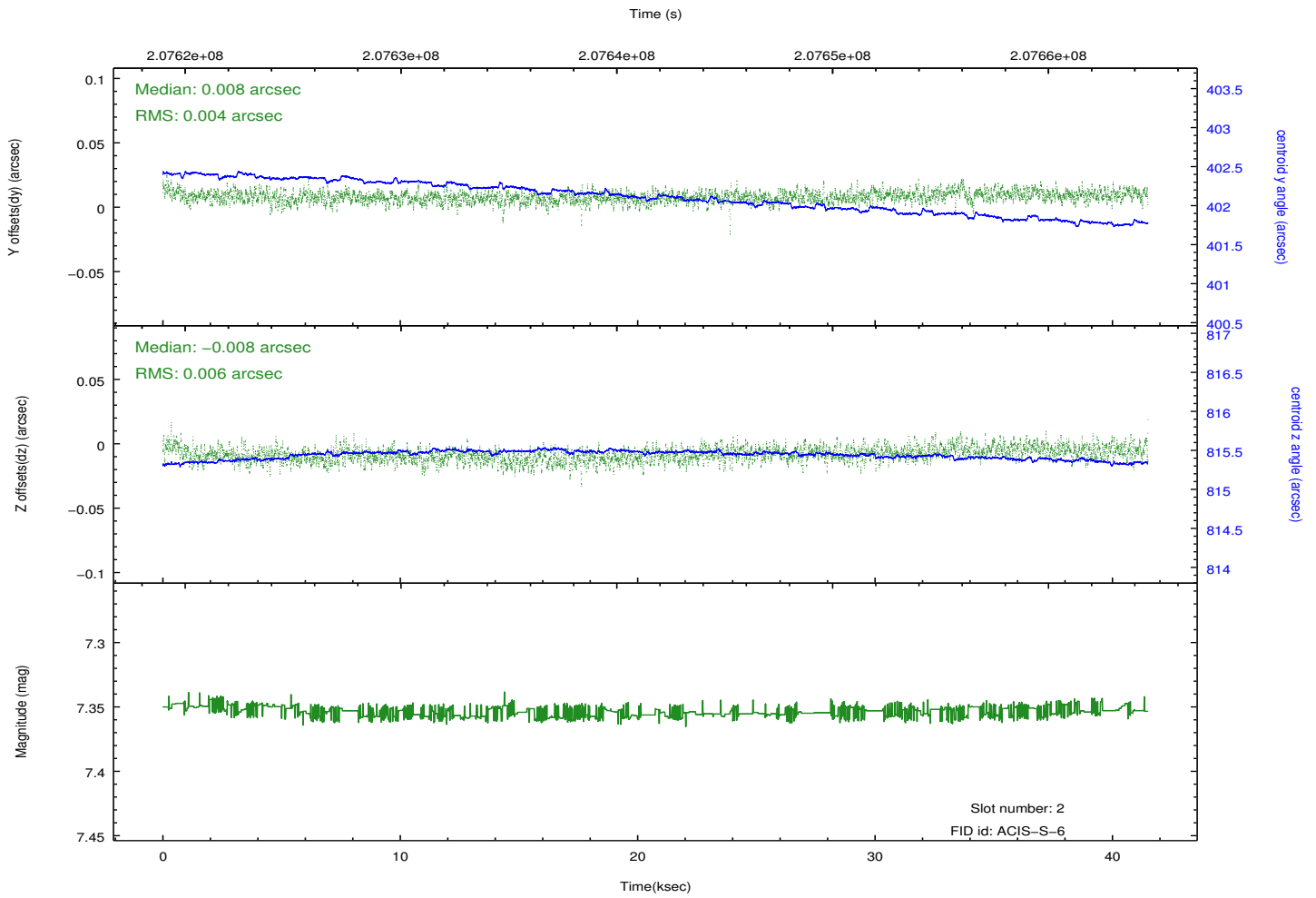
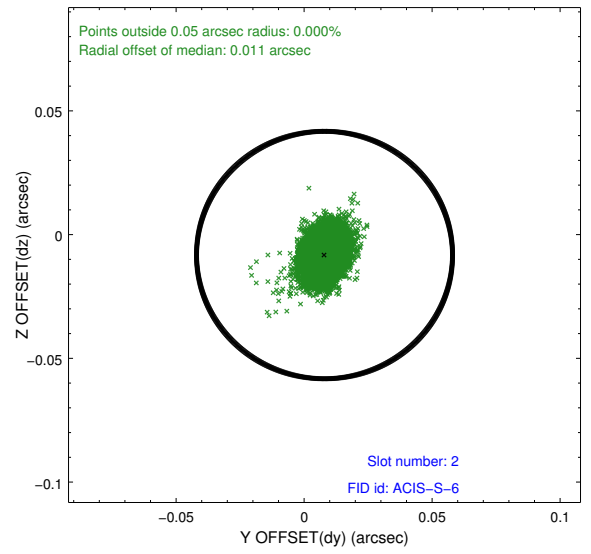
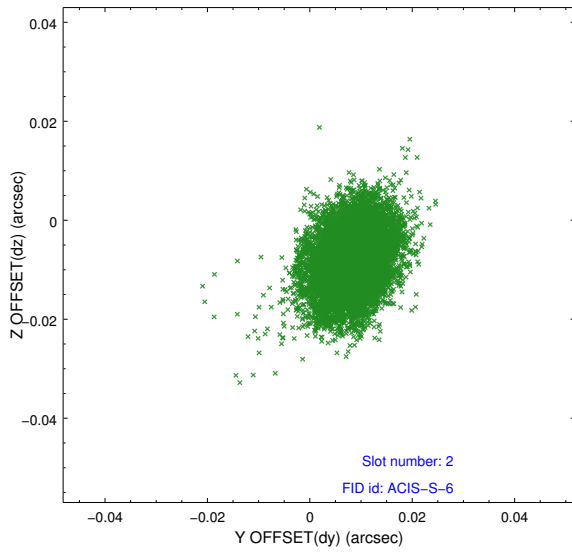
### 2.5.1 Slot 0



## 2.5.2 Slot 1



### 2.5.3 Slot 2



# A Summary

## A.1 Status

V&V Scientist	Jen Lauer
V&V Date (YYYY-MM-DD)	2013.02.15
V&V Edition	1
V&V Disposition and Status	OK
V&V Charge Time	41.497

## A.2 Comments

Charge time for this ObsId remains at previous value of 41.497 ks although with the current processing the charge time would have been 41.45 ksec.

=====

This observation was interrupted by safing of the science instruments onboard Chandra due to high solar radiation environment. The observation was interrupted at 2004:213:12:01. Due to a high radiation environment, the instruments were safed and the observation terminated early. This observation has been reprocessed so that the aspect solution correctly handles the instrument safing and maneuver activities at the end of the observation.