

V&V Reference Report

L2 ASCDS Version : 8.4.5

Observation 4868 - L2 Version 3
Chandra X-Ray Center

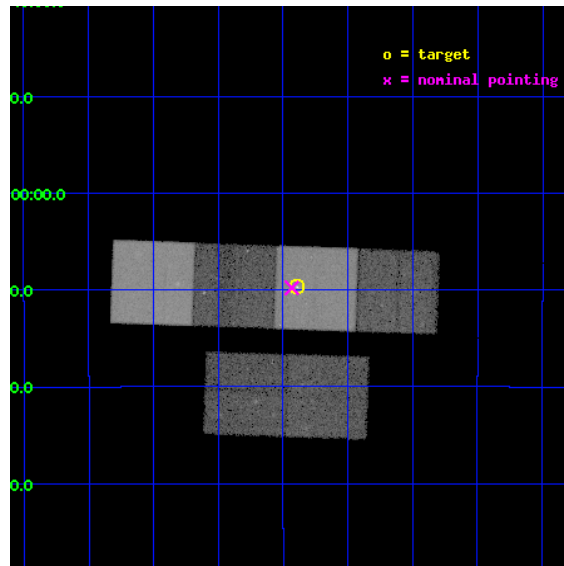
L2 Processing Date : Nov 12 2012

Contents

1	Front	2
2	OBI	3
2.1	OBI	3
2.1.1	Images	3
2.1.2	Bias	3
2.1.3	Parameters	4
2.1.4	Events	4
2.2	Compared Parameters	5
2.3	Aspect	6
2.4	Star Slots	9
2.4.1	Slot 3	9
2.4.2	Slot 4	10
2.4.3	Slot 5	11
2.4.4	Slot 6	12
2.4.5	Slot 7	13
2.5	FID Slots	14
2.5.1	Slot 0	14
2.5.2	Slot 1	15
2.5.3	Slot 2	16
A	Summary	17
A.1	Status	17
A.2	Comments	17

1 Front

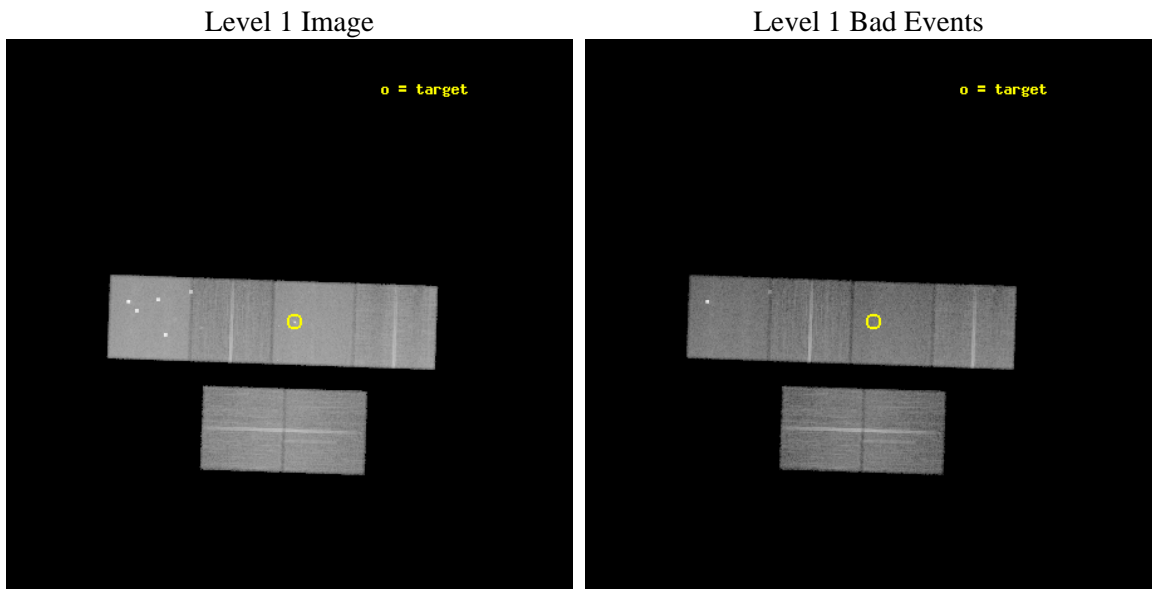
seq_num	700950	Sequence number
obs_id	4868	Observation id
title	Probing Obscured AGN with X-ray Iron Lines	Proposal title
observer	Dr. Nancy Levenson	Principal investigator
object	NGC 3393	Source name
dtcycle	0	
cycle	P	events from which exps? Prim/Second/Both
ra_targ	162.0975	Observer's specified target RA [deg]
dec_targ	-25.161944	Observer's specified target Dec [deg]
ra_nom	162.10809856964	Nominal RA [deg]
dec_nom	-25.163321098931	Nominal Dec [deg]
roll_nom	1.9651059756523	Nominal Roll [deg]
revision	3	Processing version of data
ontime	29708.799889326	Sum of GTIs [s]
livetime	29332.609176636	Livetime [s]
ontime2	29708.799889326	Sum of GTIs [s]
ontime3	29708.799889326	Sum of GTIs [s]
ontime5	29708.799889326	Sum of GTIs [s]
ontime6	29708.799889326	Sum of GTIs [s]
ontime7	29708.799889326	Sum of GTIs [s]
ontime8	29705.558988601	Sum of GTIs [s]
l2events	316723	Number of level 2 events



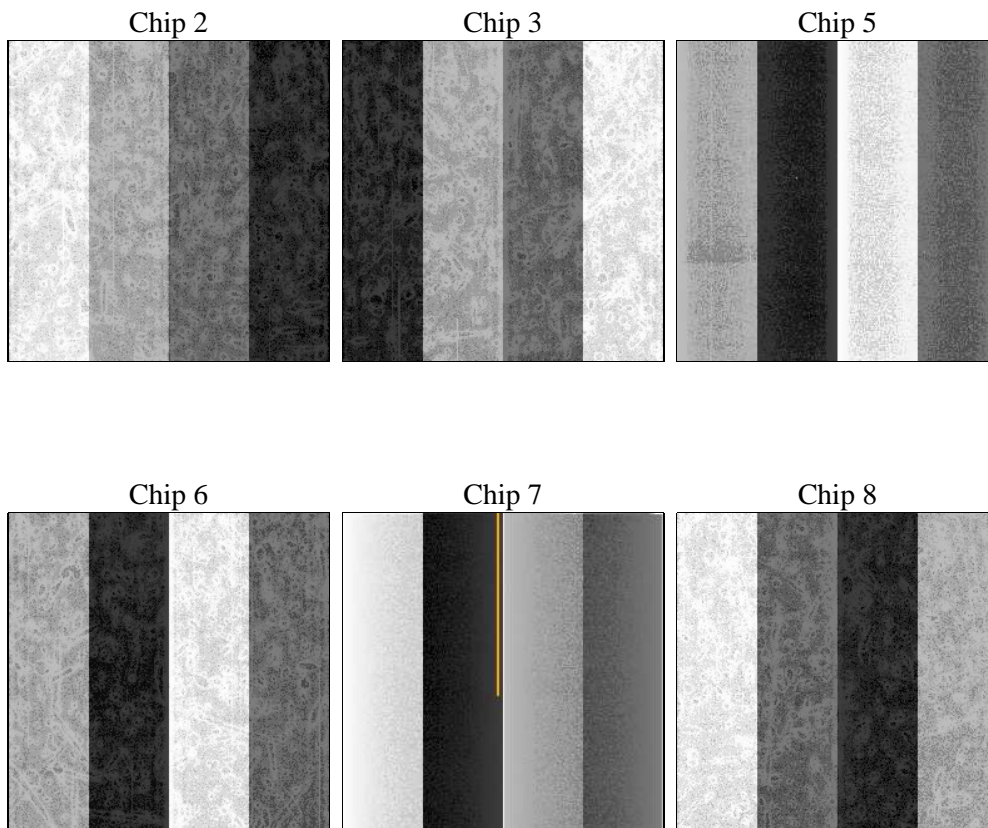
2 OBI

2.1 OBI

2.1.1 Images



2.1.2 Bias



2.1.3 Parameters

obi_num	0	Obi number	sched_exp_time	29957.971000	[s] Scheduled observation exposure time
ascdsver	8.4.5	Processing system revision	ontime	29708.799889326	Sum of GTIs [s]
caldbver	4.5.2	 	ontime2	29708.799889326	Sum of GTIs [s]
date	2012-11-12T15:29:21	Date and time of file creation	ontime3	29708.799889326	Sum of GTIs [s]
revision	3	Processing version of data	ontime5	29708.799889326	Sum of GTIs [s]
			ontime6	29708.799889326	Sum of GTIs [s]
			ontime7	29708.799889326	Sum of GTIs [s]
			ontime8	29705.558988601	Sum of GTIs [s]
			l1events	1409545	Number of level 1 events

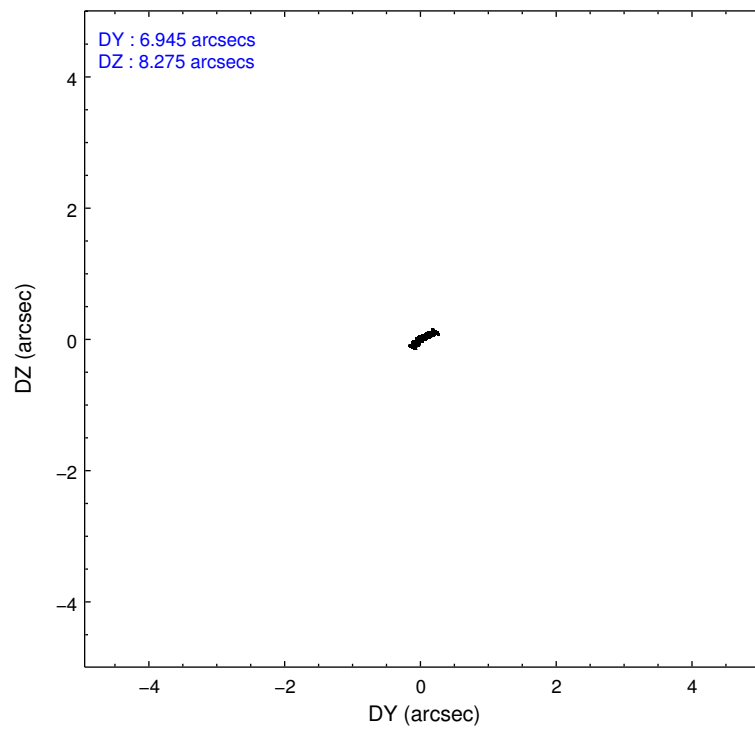
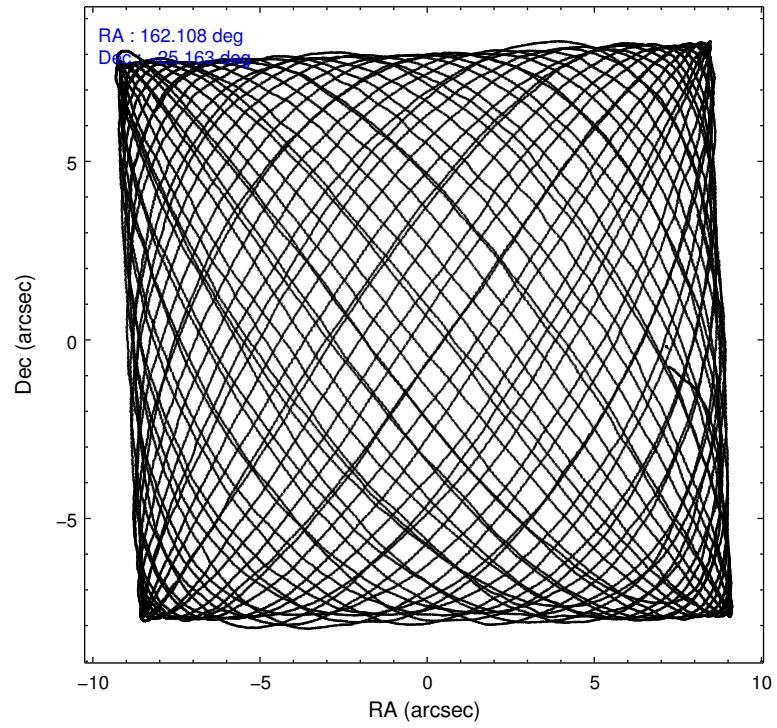
2.1.4 Events

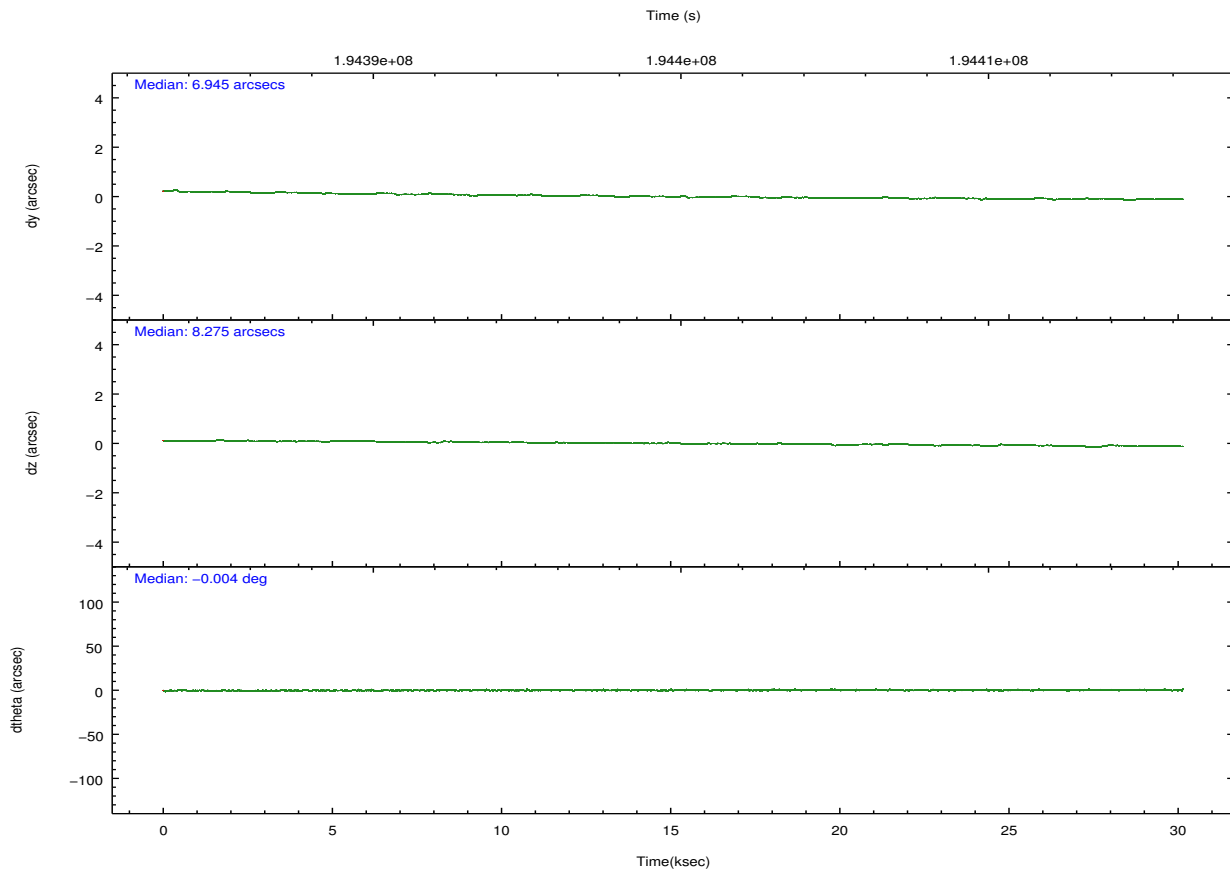
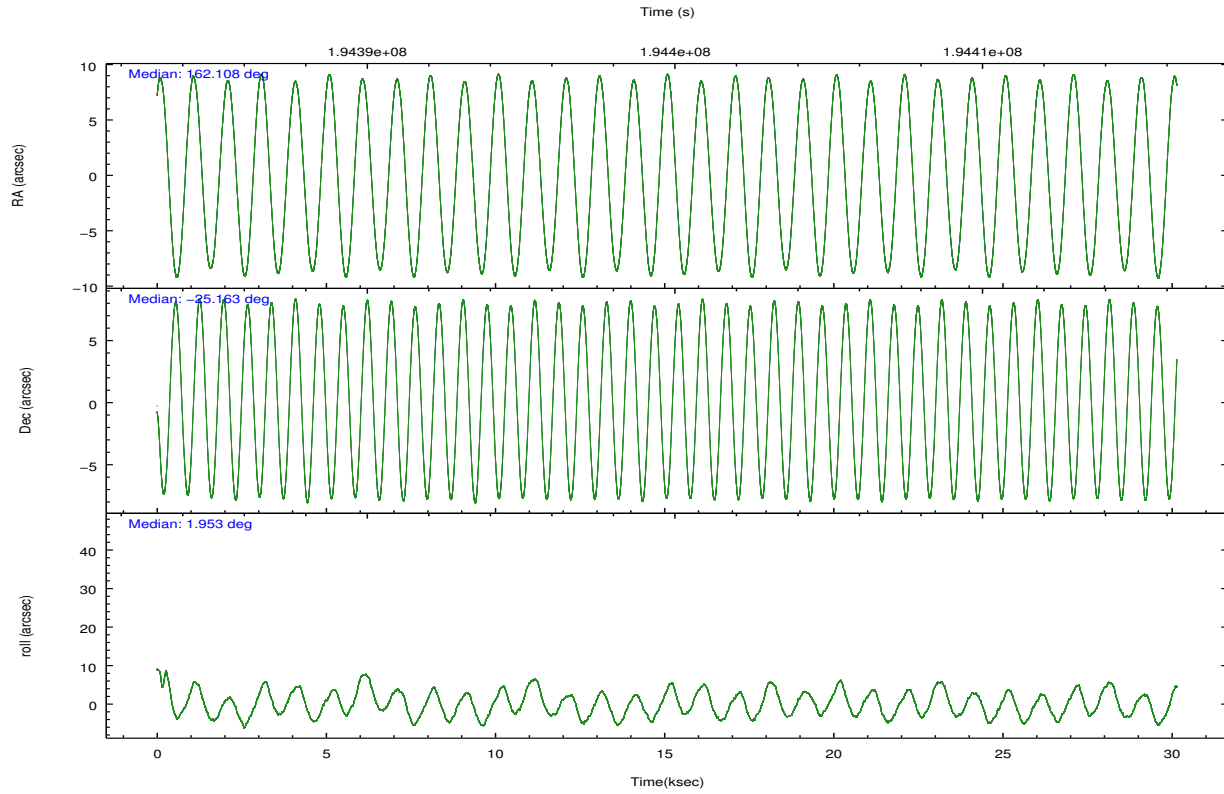
	ccd 2	ccd 3	ccd 5	ccd 6	ccd 7	ccd 8		ccd 2	ccd 3	ccd 5	ccd 6	ccd 7	ccd 8
level 1 events	194227	186431	323550	193834	267460	244043	grade 0 events	9863	9818	34149	8968	11000	16434
rejected events	171570	164096	167514	171014	154526	192187		5%	5%	10%	4%	4%	6%
rejected %	88%	88%	51%	88%	57%	78%	grade 1 events	101	124	626	96	242	144
								0%	0%	0%	0%	0%	0%
							grade 2 events	4568	4263	40178	4787	22218	11301
								2%	2%	12%	2%	8%	4%
							grade 3 events	2208	2131	5248	2168	10040	5429
								1%	1%	1%	1%	3%	2%
							grade 4 events	2125	2196	4941	2190	10001	5166
								1%	1%	1%	1%	3%	2%
							grade 5 events	7644	8544	24226	8720	25011	11705
								3%	4%	7%	4%	9%	4%
							grade 6 events	3906	3930	71558	4711	59704	13534
								2%	2%	22%	2%	22%	5%
							grade 7 events	163812	155425	142624	162194	129244	180330
								84%	83%	44%	83%	48%	73%

2.2 Compared Parameters

Parameter	Planned	Actual	Parameter	Planned	Actual
Instrument	ACIS	ACIS	Obspar format version number	7	7
Detector	ACIS-235678	ACIS-235678	Obspar file type	PREDICTED	ACTUAL
Grating	NONE	NONE	Obspar update status	NONE	UPDATED
Data mode	FAINT	FAINT	Number of optional ACIS chips dropped	0	0
Observation mode	POINTING	POINTING	On-chip summing requested	N	N
[deg] Pointing RA	162.082768	162.1080985696418	Subarray requested	NONE	NONE
[deg] Pointing Dec	-25.178042	-25.16332109893133	Alternating exposures requested	N	N
[deg] Pointing Roll	1.797708	1.96510597565226	[s] Primary exposure time	0.000000	3.2
[mm] SIM focus pos	-0.684267	-0.6828225247311905			
[mm] SIM defocus	0	0.001444936568705701			
[mm] SIM translation stage pos	-190.132523	-190.1425803651734			
[mm] SIM translation stage offset	0	0.01005778216563158			
[s] Observation start time (MET)	194384856.184000	194383534.50732			
Observation start date	2004-02-28T19:46:32	2004-02-28T19:25:34			
[s] Observation end time (MET)	194414814.184000	194415128.5962			
Observation end date	2004-02-29T04:05:50	2004-02-29T04:12:08			
Read mode	TIMED	TIMED			

2.3 Aspect



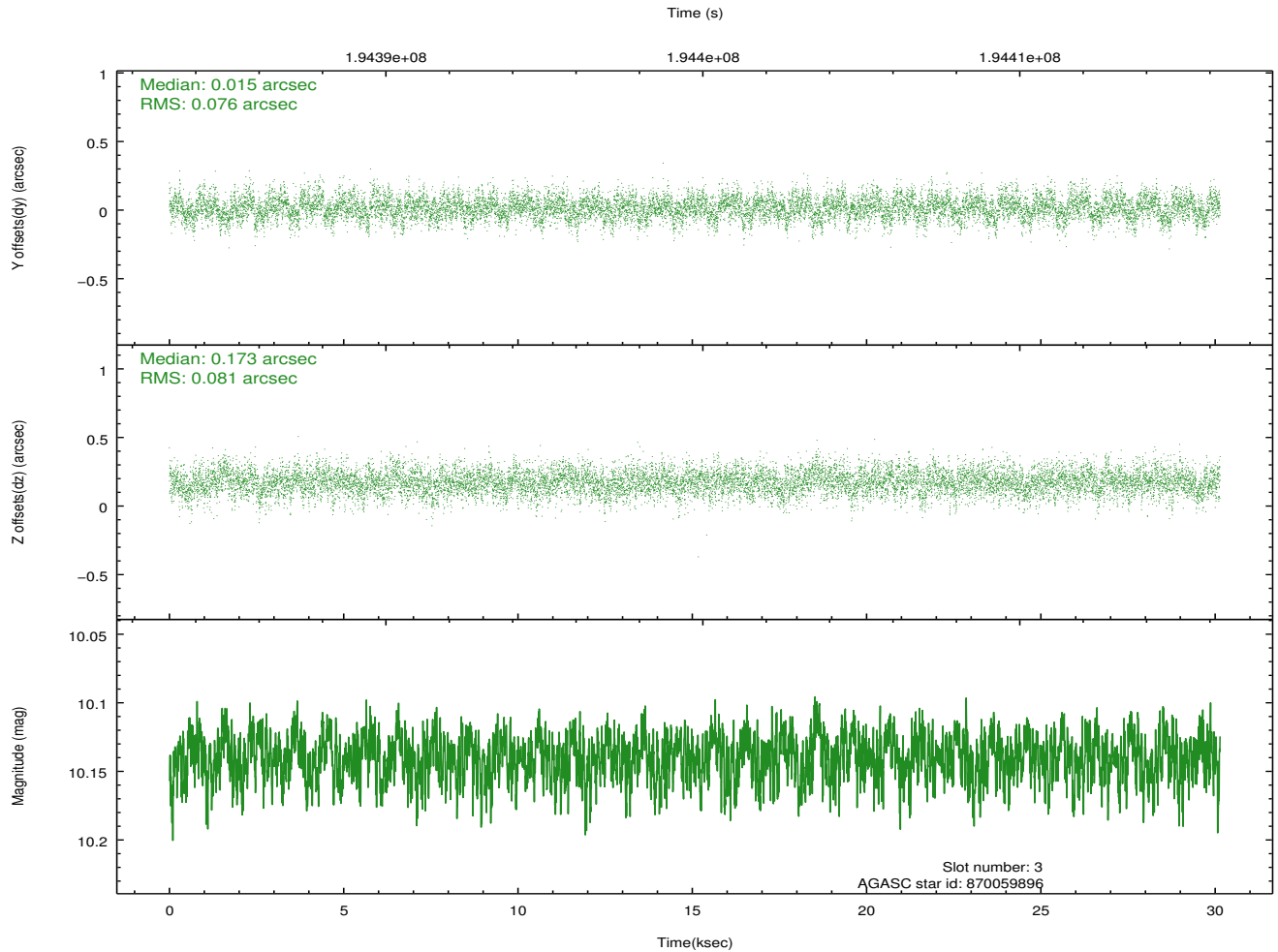
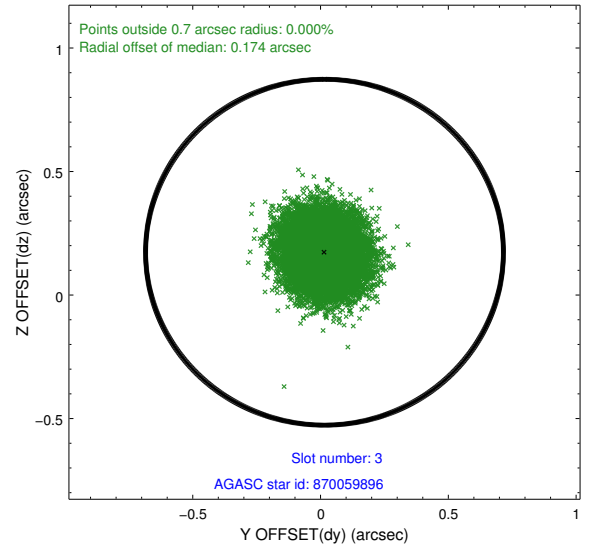
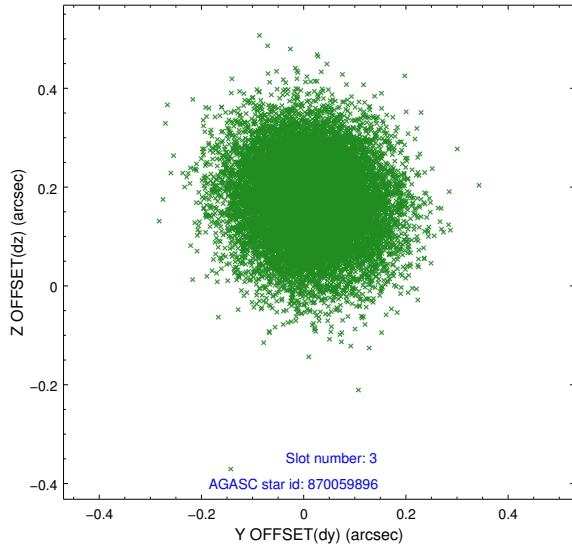


Slot Statistics

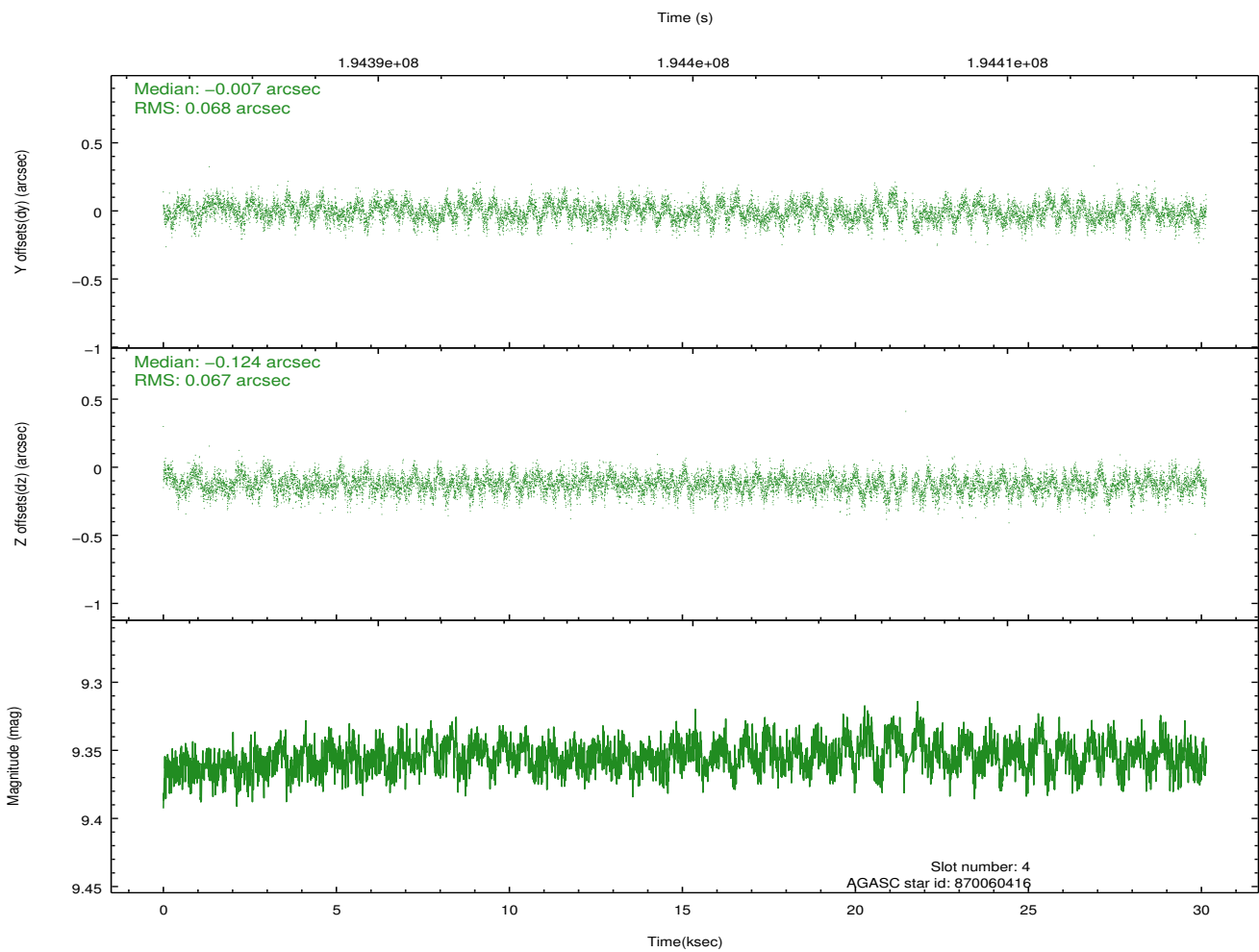
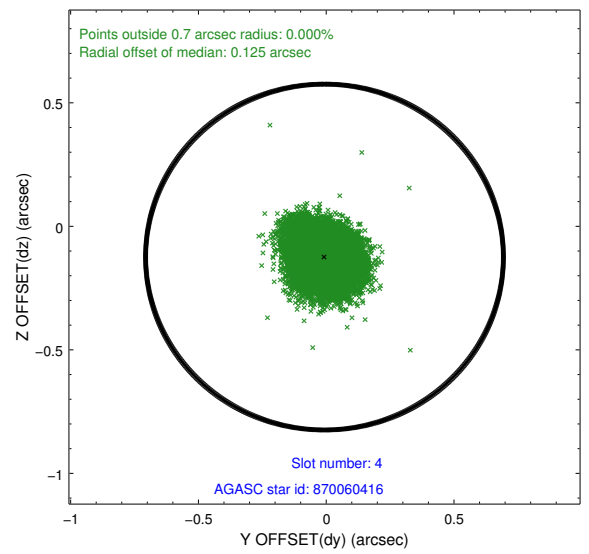
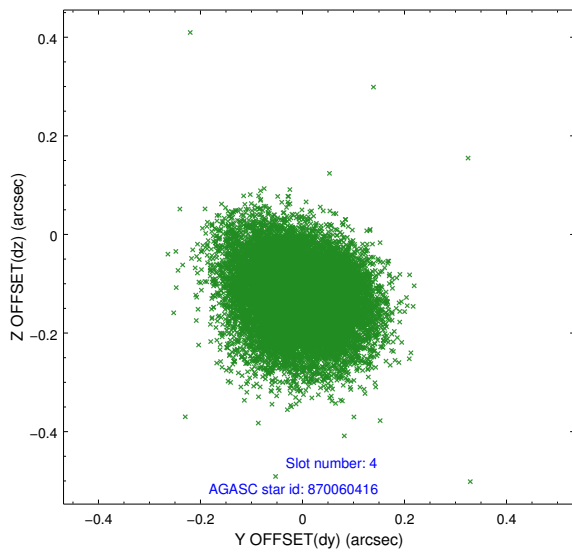
slot	status	id	mag	n_pts	med_dy	med_dz	dr1	dr2	ra	dec	mean_y	mean_z
0	FID	ACIS-S-2	7.10	7353	-0.016	-0.035	0.007	0.011	0.000000	0.000000	-759.74	-1729.45
1	FID	ACIS-S-4	7.20	7353	0.047	0.017	0.006	0.012	0.000000	0.000000	2153.58	178.99
2	FID	ACIS-S-5	7.23	7353	-0.063	0.027	0.007	0.013	0.000000	0.000000	-1812.52	172.78
3	GUIDE	870059896	10.14	14691	0.015	0.173	0.119	0.194	161.813185	-25.464952	-907.87	-1005.49
4	GUIDE	870060416	9.35	14630	-0.007	-0.124	0.102	0.164	162.151228	-25.161120	225.11	53.82
5	GUIDE	870062672	9.87	14695	-0.079	0.130	0.109	0.176	162.548898	-25.328477	1499.20	-590.75
6	GUIDE	870063952	8.34	14702	0.024	-0.139	0.067	0.108	161.785917	-24.549213	-900.89	2291.94
7	GUIDE	870065008	9.02	14700	0.047	-0.042	0.077	0.124	161.653761	-24.585489	-1337.71	2173.63

2.4 Star Slots

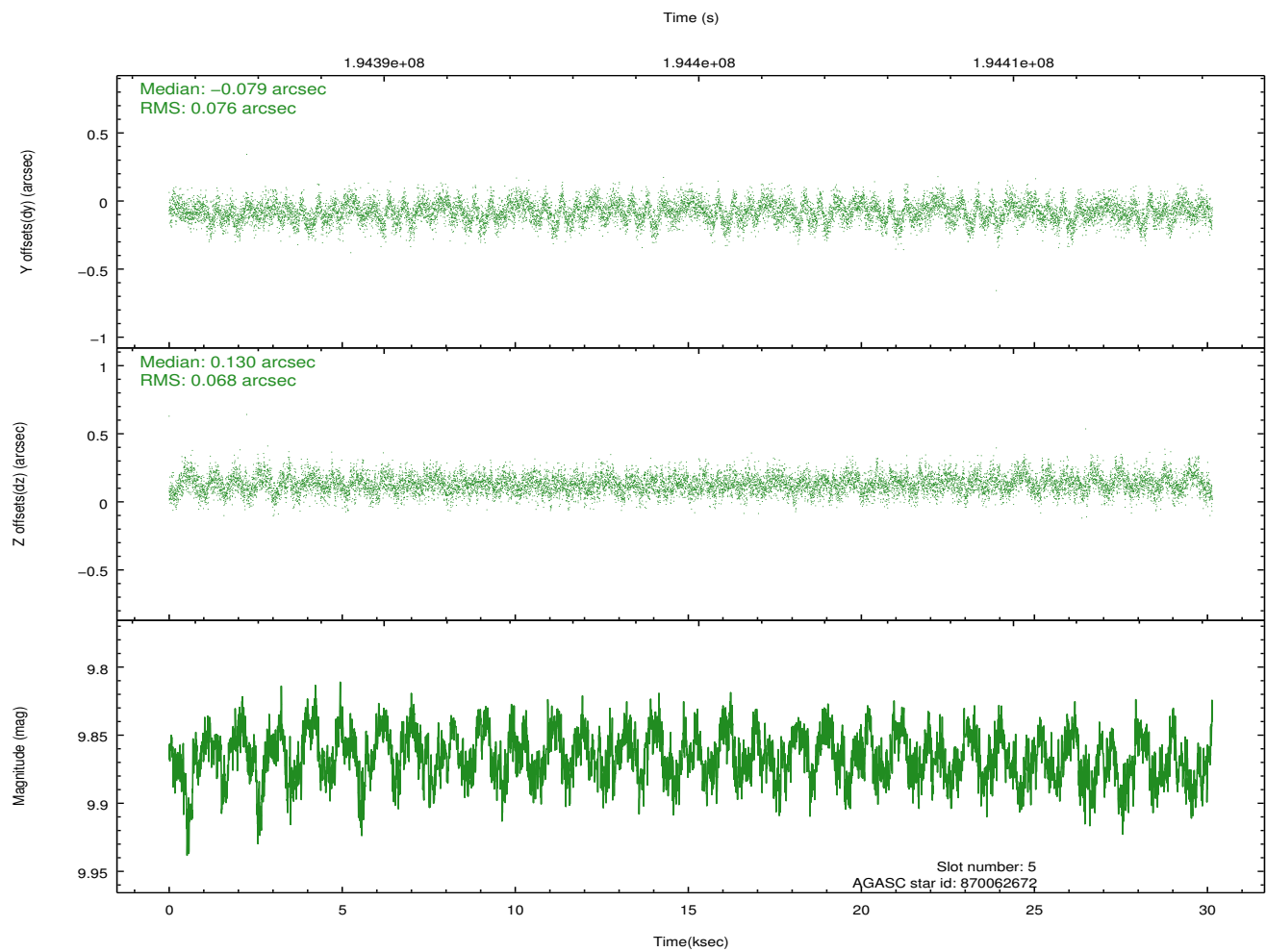
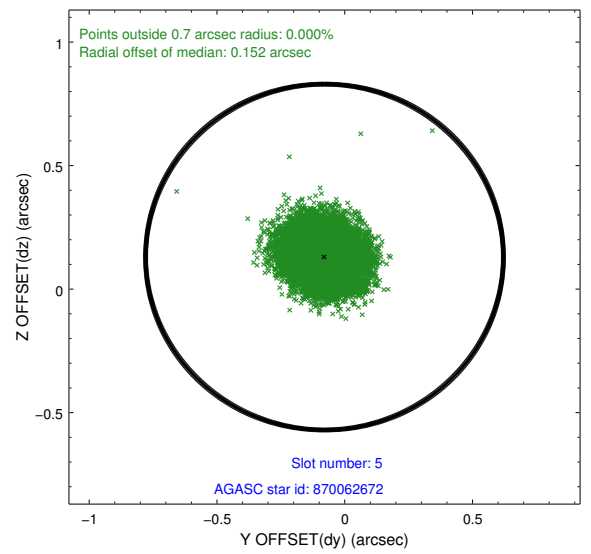
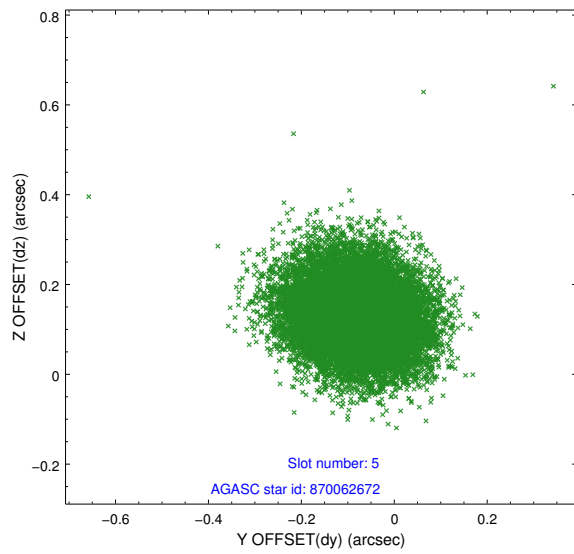
2.4.1 Slot 3



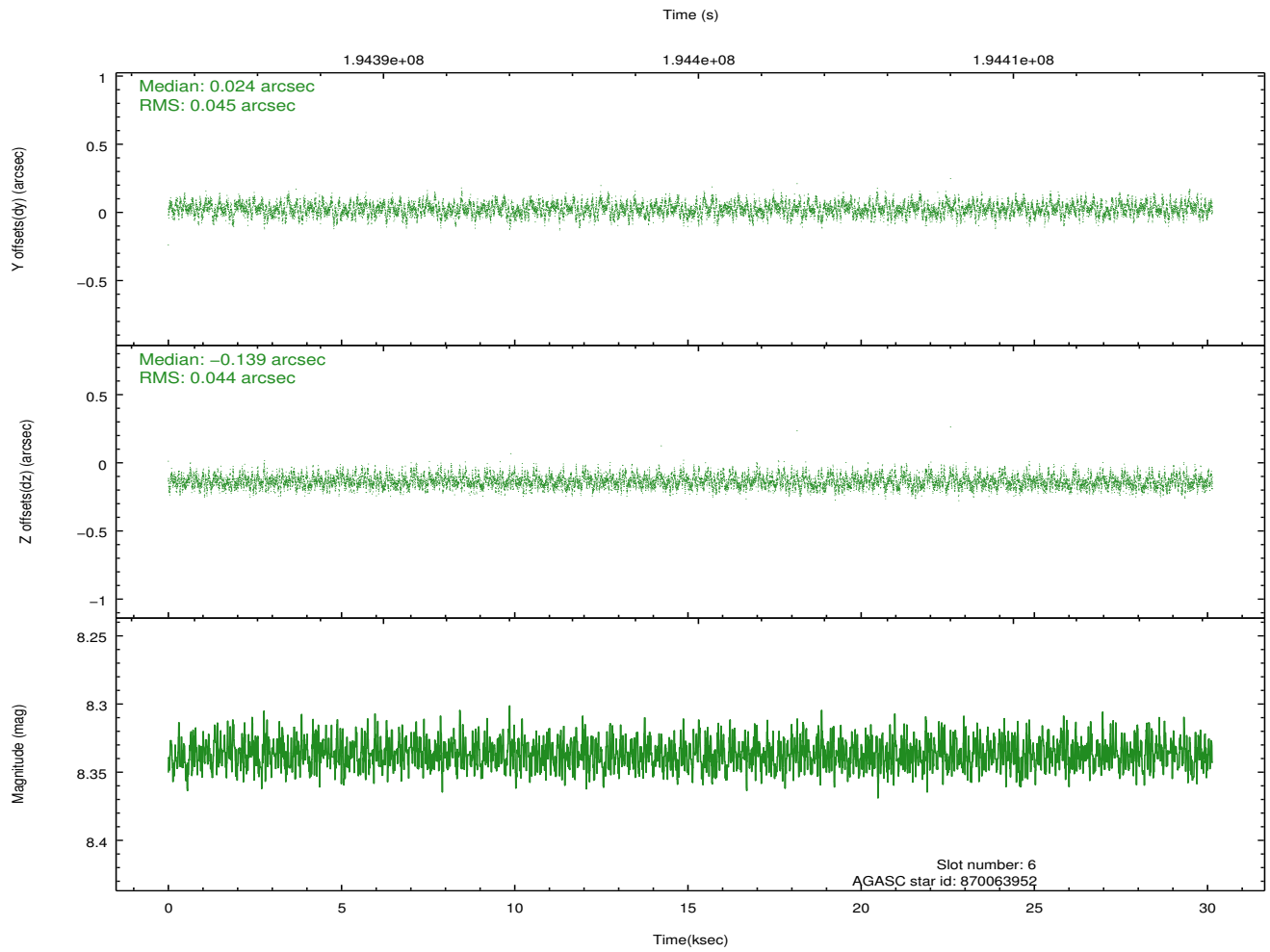
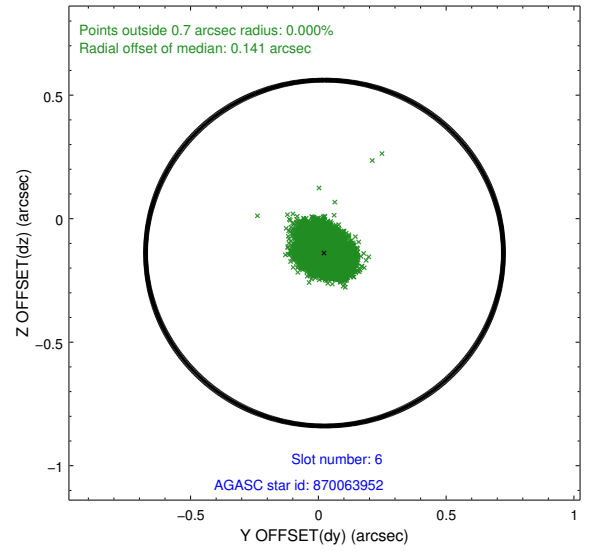
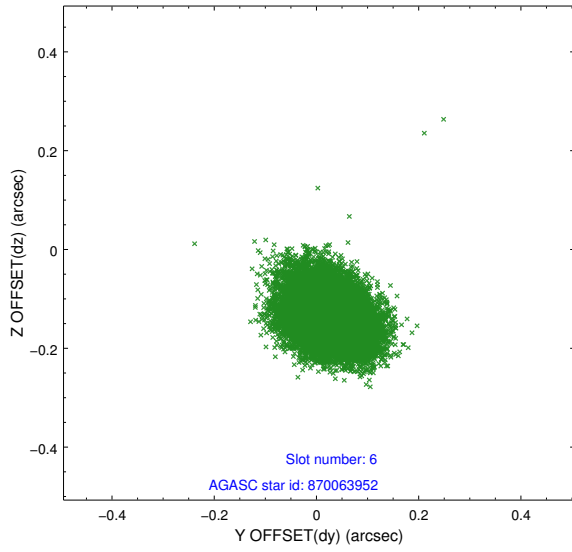
2.4.2 Slot 4



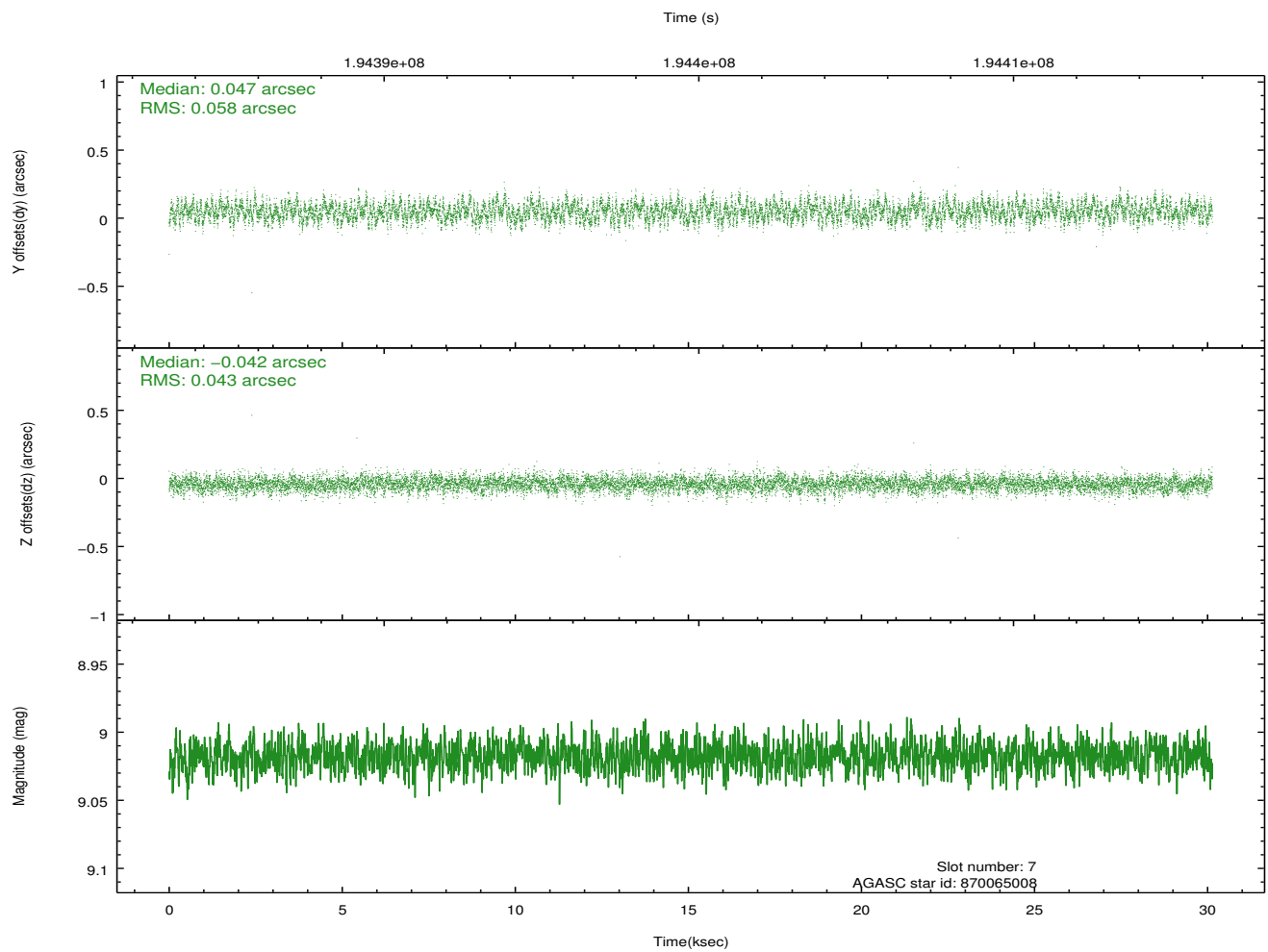
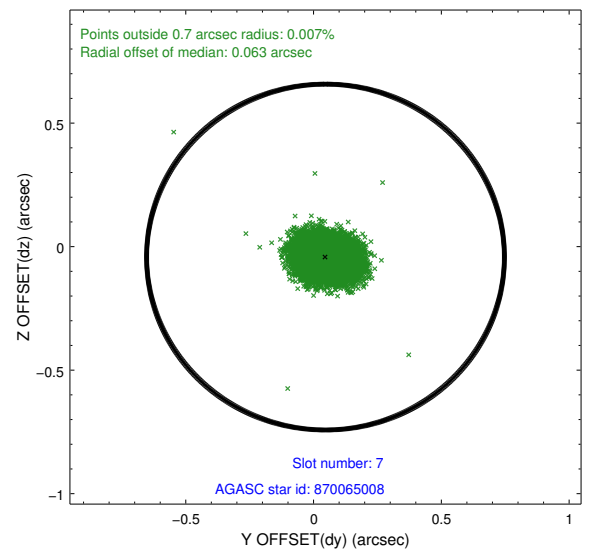
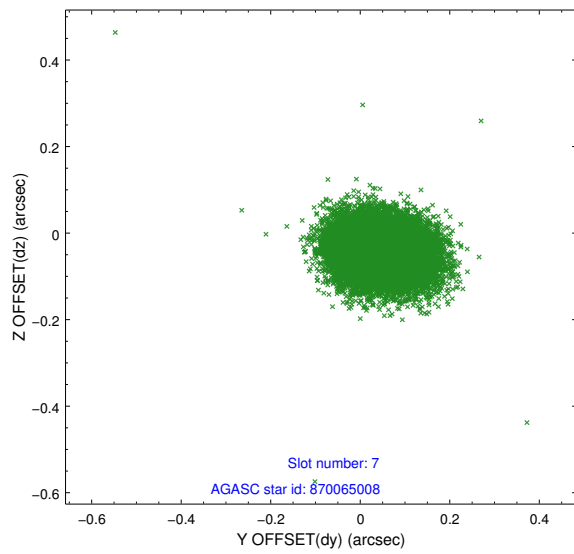
2.4.3 Slot 5



2.4.4 Slot 6

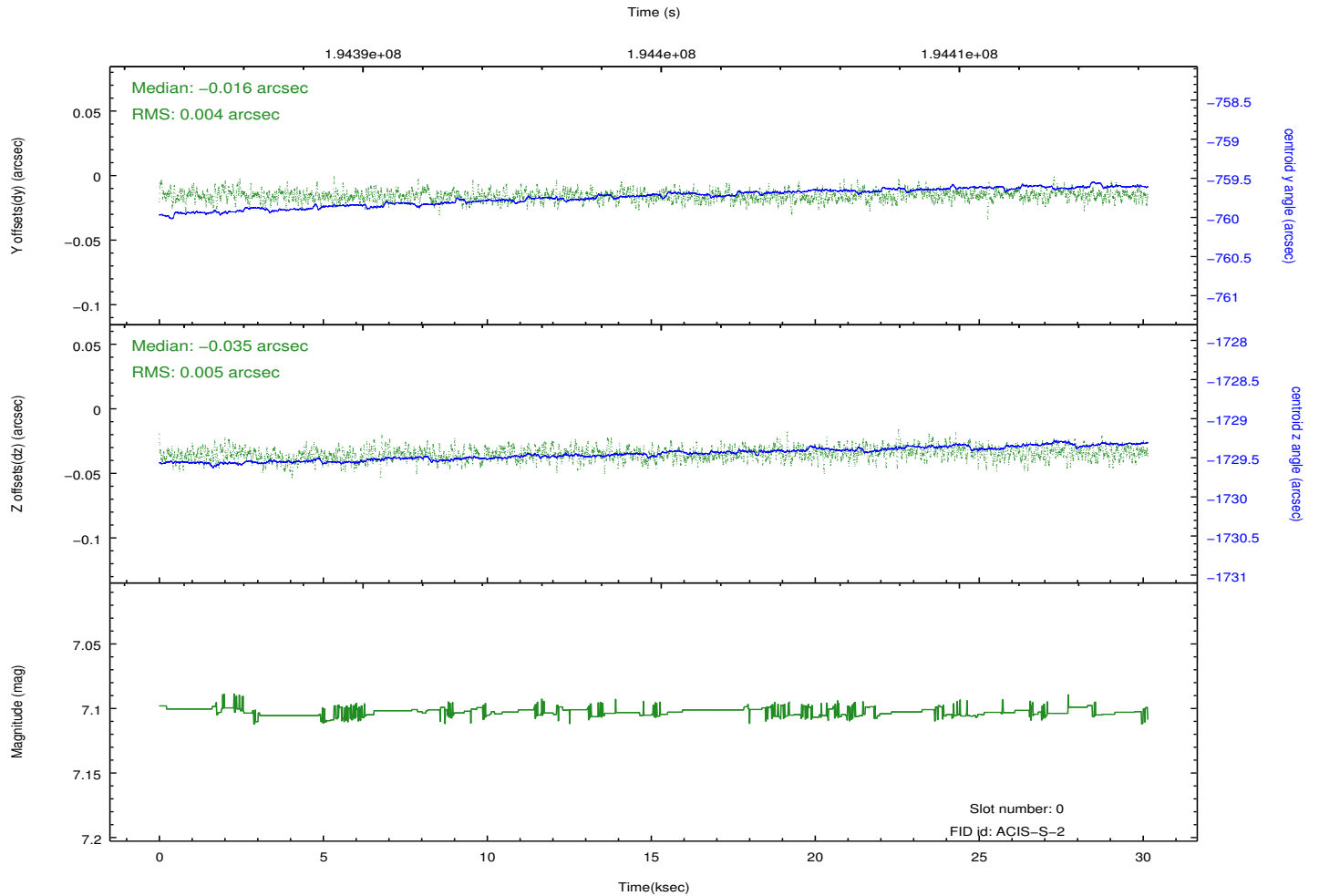
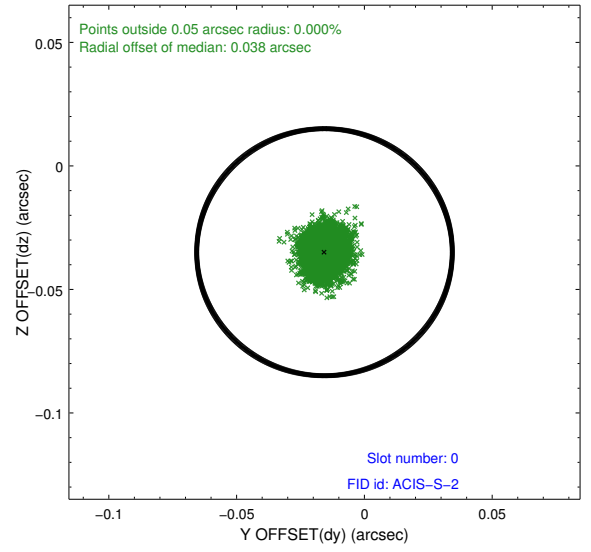
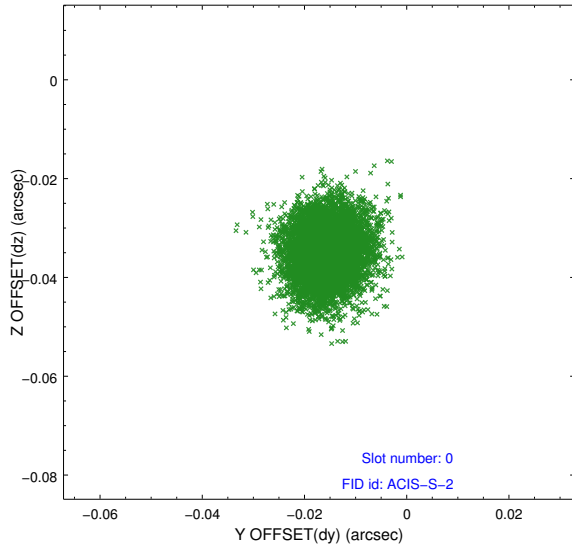


2.4.5 Slot 7

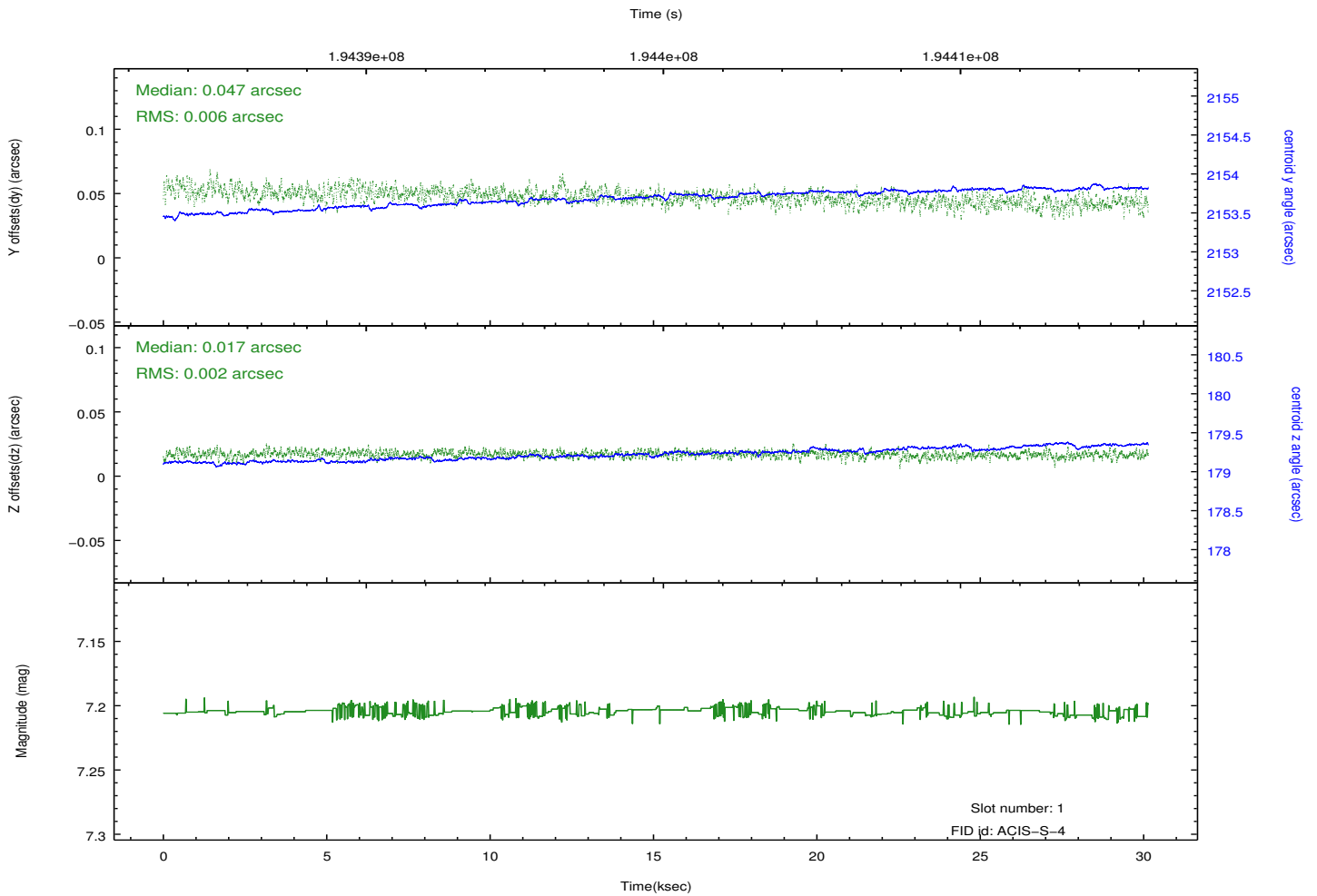
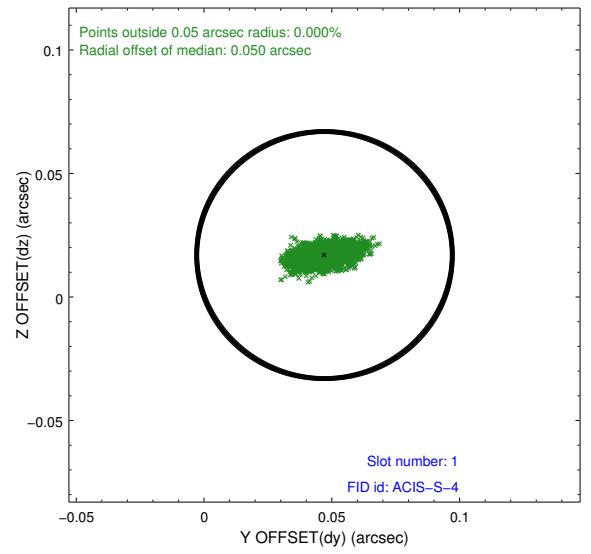
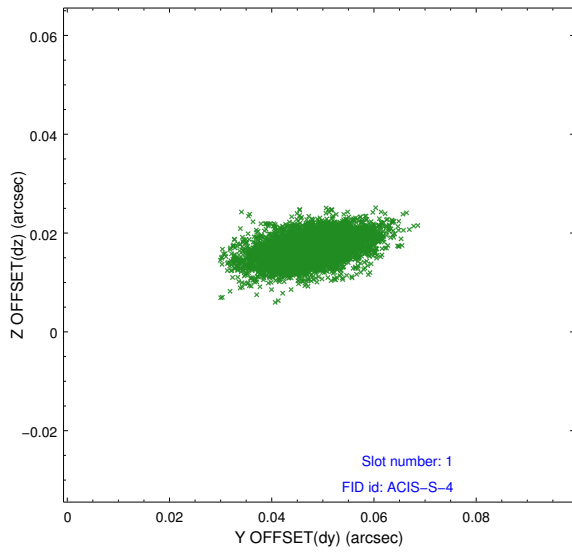


2.5 FID Slots

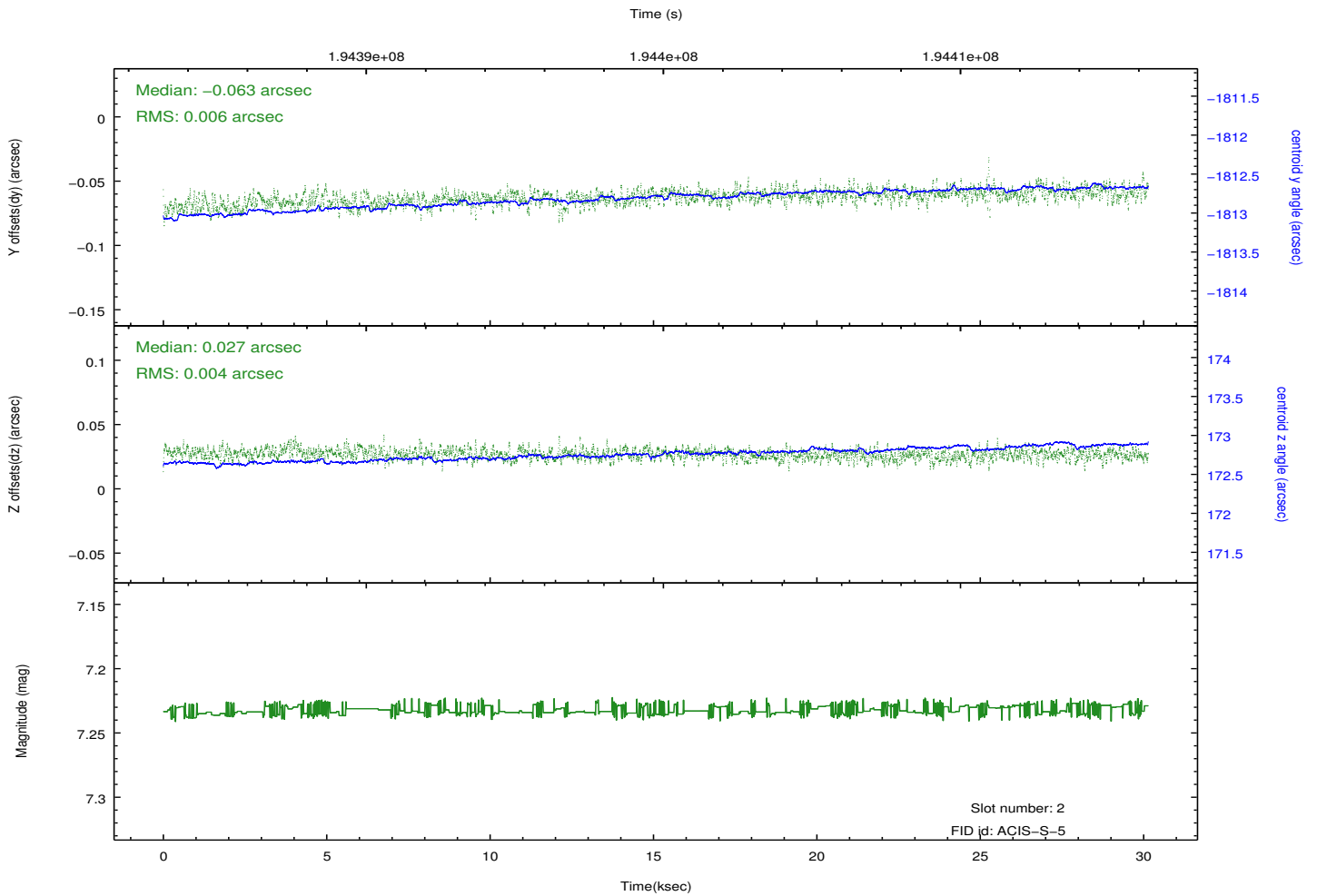
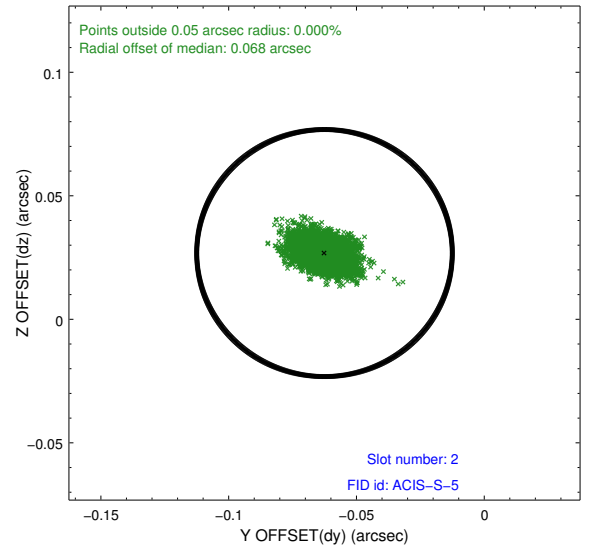
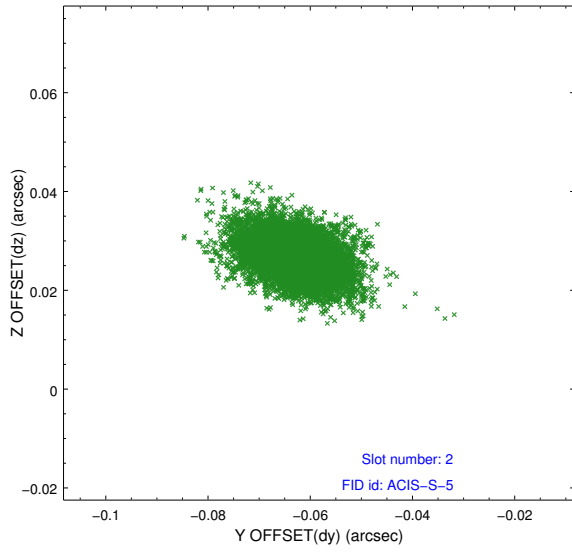
2.5.1 Slot 0



2.5.2 Slot 1



2.5.3 Slot 2



A Summary

A.1 Status

V&V Scientist	Jen Lauer
V&V Date (YYYY-MM-DD)	2012.12.12
V&V Edition	1
V&V Disposition and Status	OK
V&V Charge Time	29.711

A.2 Comments