

# V&V Reference Report

## L2 ASCDS Version : 8.4.3.1

Observation 7021 - L2 Version 2  
Chandra X-Ray Center

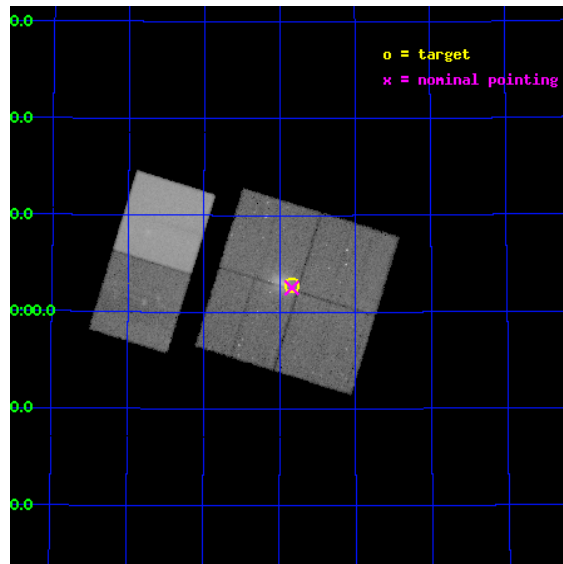
L2 Processing Date : Apr 8 2012

## Contents

<b>1</b>	<b>Front</b>	<b>2</b>
<b>2</b>	<b>OBI</b>	<b>3</b>
2.1	OBI . . . . .	3
2.1.1	Images . . . . .	3
2.1.2	Bias . . . . .	3
2.1.3	Parameters . . . . .	4
2.1.4	Events . . . . .	4
2.2	Compared Parameters . . . . .	5
2.3	Aspect . . . . .	6
2.4	Star Slots . . . . .	9
2.4.1	Slot 3 . . . . .	9
2.4.2	Slot 4 . . . . .	10
2.4.3	Slot 5 . . . . .	11
2.4.4	Slot 6 . . . . .	12
2.4.5	Slot 7 . . . . .	13
2.5	FID Slots . . . . .	14
2.5.1	Slot 0 . . . . .	14
2.5.2	Slot 1 . . . . .	15
2.5.3	Slot 2 . . . . .	16
<b>A</b>	<b>Summary</b>	<b>17</b>
A.1	Status . . . . .	17
A.2	Comments . . . . .	17

# 1 Front

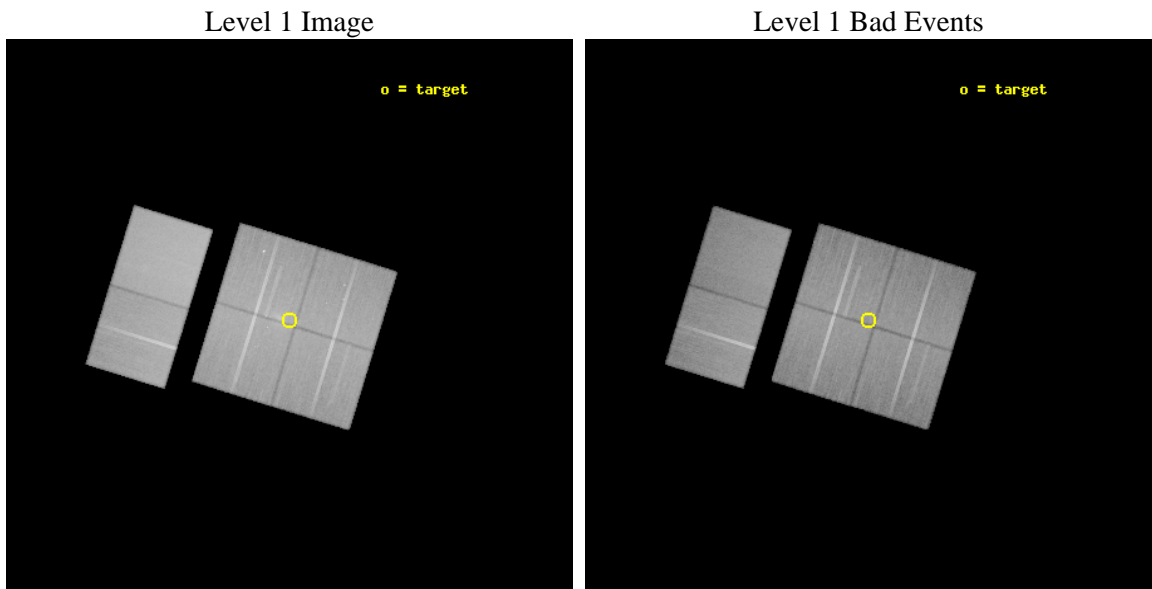
seq_num	900437	Sequence number
obs_id	7021	Observation id
title	Tracing the X-ray cosmic web at z=0.3	Proposal title
observer	Dr. Roberto Gilli	Principal investigator
object	Abell 1995 Field 1	Source name
dtcycle	0	&#160
cycle	P	events from which exps? Prim/Second/Both
ra_targ	223.21	Observer's specified target RA [deg]
dec_targ	58.046694	Observer's specified target Dec [deg]
ra_nom	223.20913828006	Nominal RA [deg]
dec_nom	58.04206157238	Nominal Dec [deg]
roll_nom	287.15202438027	Nominal Roll [deg]
revision	2	Processing version of data
ontime	49161.558826804	Sum of GTIs [s]
livetime	48539.045567402	Livetime [s]
ontime0	49158.317846417	Sum of GTIs [s]
ontime1	49158.317886353	Sum of GTIs [s]
ontime2	49155.077065408	Sum of GTIs [s]
ontime3	49161.558826804	Sum of GTIs [s]
ontime6	49155.076985717	Sum of GTIs [s]
ontime7	49164.799816906	Sum of GTIs [s]
l2events	484860	Number of level 2 events



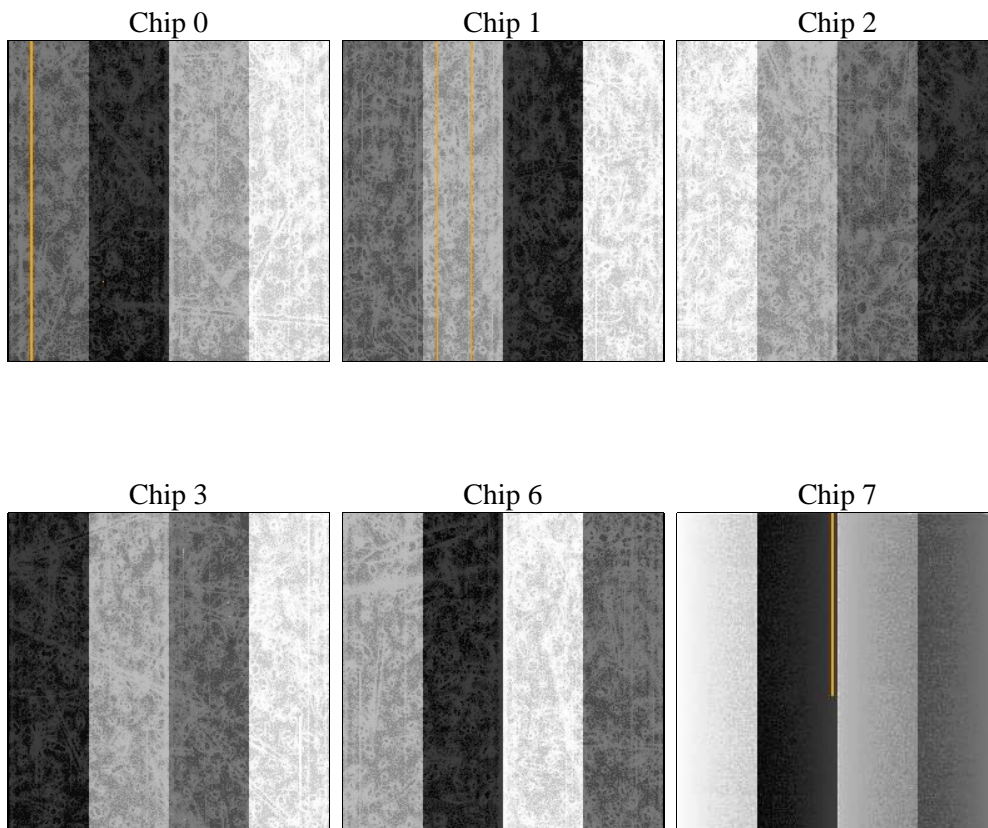
## 2 OBI

### 2.1 OBI

#### 2.1.1 Images



#### 2.1.2 Bias



### 2.1.3 Parameters

obi_num	0	Obi number	sched_exp_time	49000.000000	[s] Scheduled observation exposure time
ascdsver	8.4.3.1	Processing system revision	ontime	49161.558826804	Sum of GTIs [s]
caldbver	4.4.9	&#160	ontime0	49158.317846417	Sum of GTIs [s]
date	2012-04-08T02:44:40	Date and time of file creation	ontime1	49158.317886353	Sum of GTIs [s]
revision	2	Processing version of data	ontime2	49155.077065408	Sum of GTIs [s]
			ontime3	49161.558826804	Sum of GTIs [s]
			ontime6	49155.076985717	Sum of GTIs [s]
			ontime7	49164.799816906	Sum of GTIs [s]
			l1events	2736083	Number of level 1 events

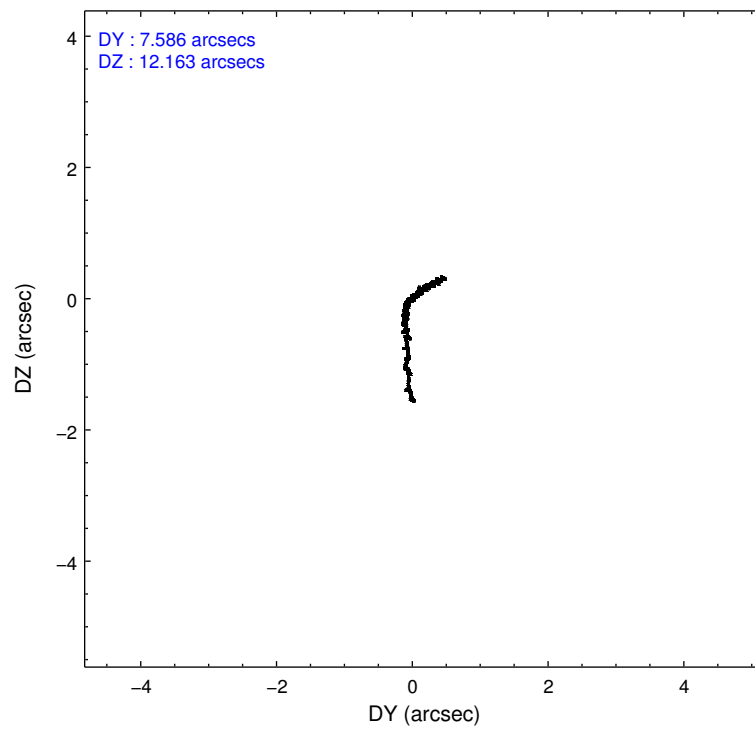
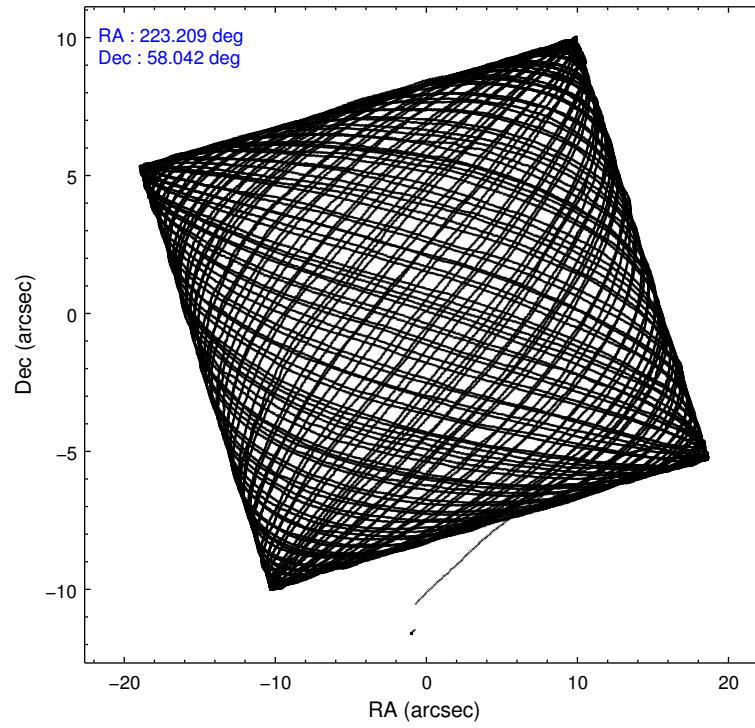
### 2.1.4 Events

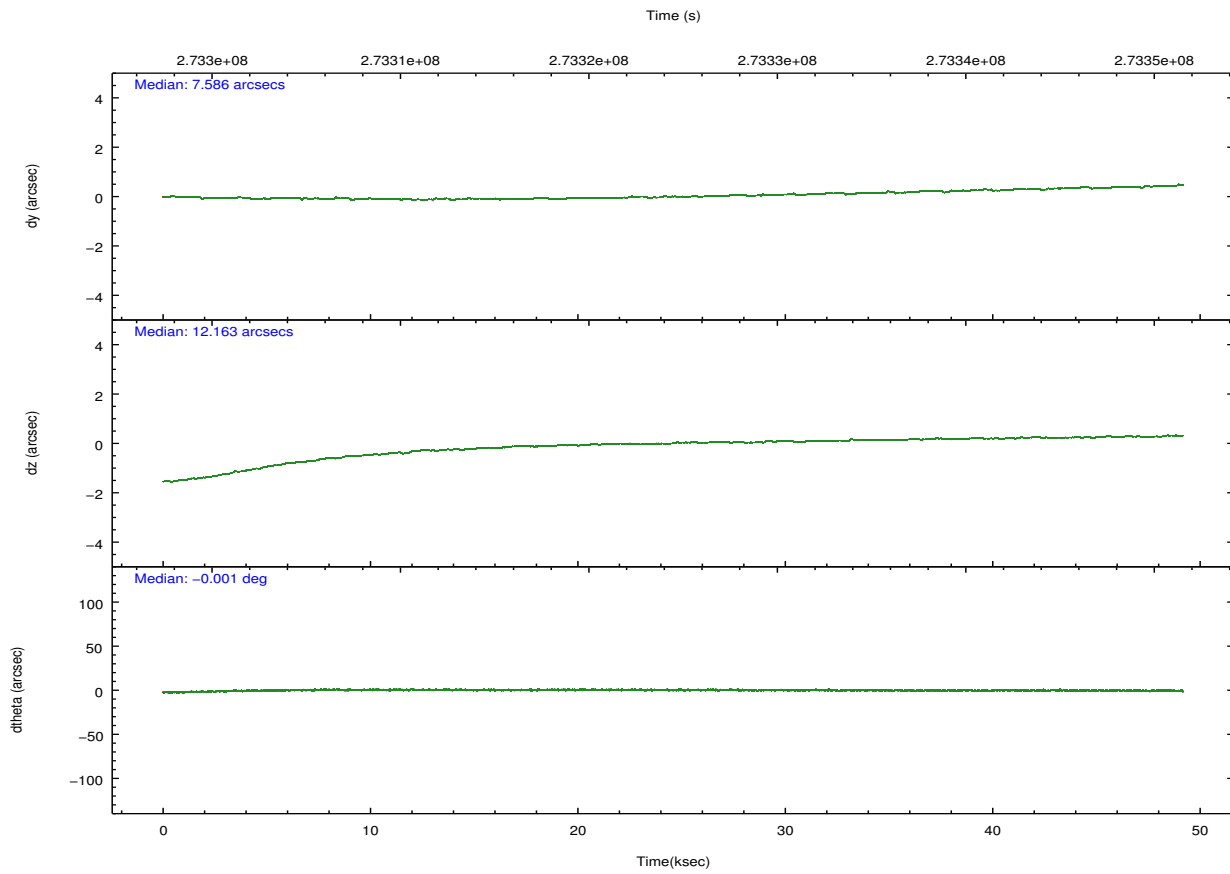
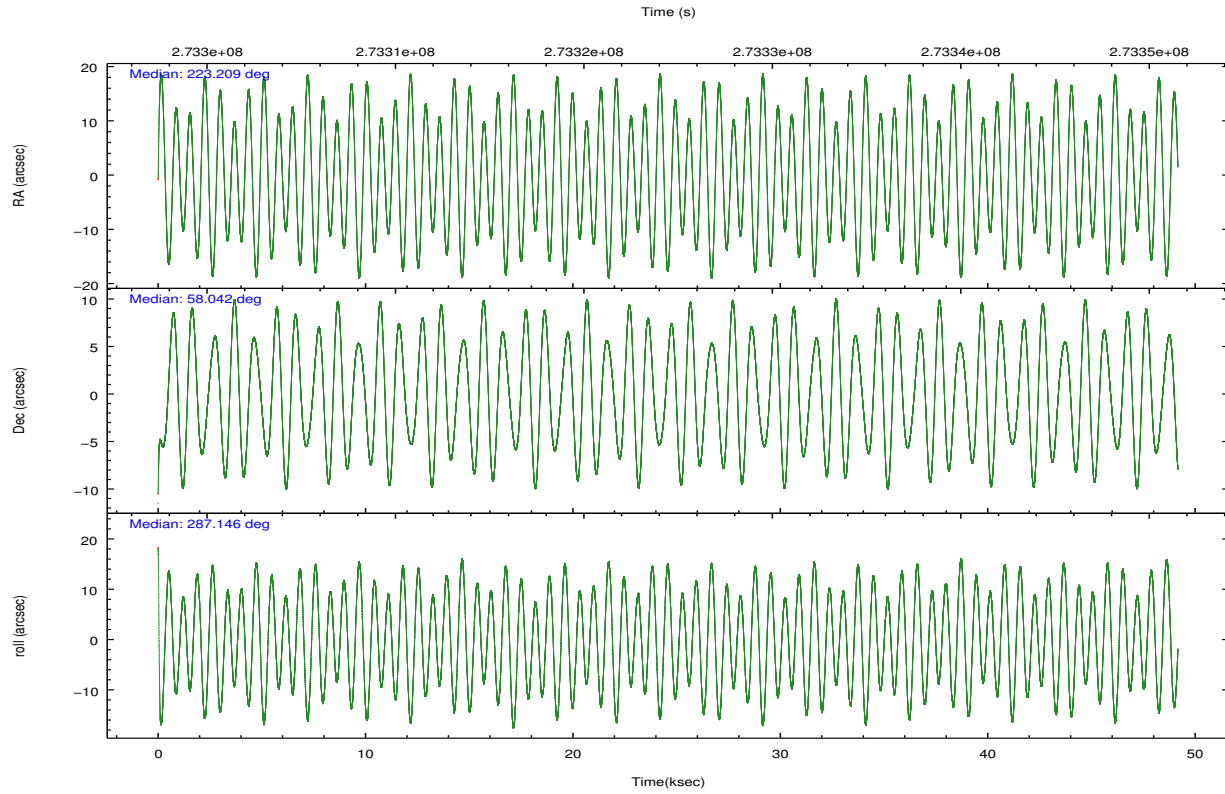
	ccd 0	ccd 1	ccd 2	ccd 3	ccd 6	ccd 7		ccd 0	ccd 1	ccd 2	ccd 3	ccd 6	ccd 7
level 1 events	396151	404112	445307	449052	450773	590688	grade 0 events	22494	21660	26722	33556	20682	21830
rejected events	344007	348529	389580	384327	398341	344577		5%	5%	6%	7%	4%	3%
rejected %	86%	86%	87%	85%	88%	58%	grade 1 events	264	214	323	349	243	541
								0%	0%	0%	0%	0%	0%
							grade 2 events	11272	12717	11040	11317	11474	49647
								2%	3%	2%	2%	2%	8%
							grade 3 events	4937	5267	4714	5397	4899	21377
								1%	1%	1%	1%	1%	3%
							grade 4 events	4670	5319	4902	5311	4794	21300
								1%	1%	1%	1%	1%	3%
							grade 5 events	17091	18804	16736	19595	20544	55742
								4%	4%	3%	4%	4%	9%
							grade 6 events	8911	10751	8498	9312	10736	132597
								2%	2%	1%	2%	2%	22%
							grade 7 events	326512	329380	372372	364215	377401	287654
								82%	81%	83%	81%	83%	48%

## 2.2 Compared Parameters

Parameter	Planned	Actual	Parameter	Planned	Actual
Instrument	ACIS	ACIS	Obspar format version number	7	7
Detector	ACIS-012367	ACIS-012367	Obspar file type	PREDICTED	ACTUAL
Grating	NONE	NONE	Obspar update status	NONE	UPDATED
Data mode	VFAINT	VFAINT	Number of optional ACIS chips dropped	0	0
Observation mode	POINTING	POINTING	On-chip summing requested	N	N
[deg] Pointing RA	223.171028	223.2091382800559	Subarray requested	NONE	NONE
[deg] Pointing Dec	58.060620	58.04206157237999	Alternating exposures requested	N	N
[deg] Pointing Roll	286.975667	287.1520243802738	[s] Primary exposure time	0.000000	3.2
[mm] SIM focus pos	-0.782348	-0.7809083437167272			
[mm] SIM defocus	0	0.001439871863259334			
[mm] SIM translation stage pos	-233.592463	-233.5874344608287			
[mm] SIM translation stage offset	0	-0.005018542100998502			
[s] Observation start time (MET)	273300043.184000	273298910.78789			
Observation start date	2006-08-30T04:39:38	2006-08-30T04:21:50			
[s] Observation end time (MET)	273349043.184000	273350372.45281			
Observation end date	2006-08-30T18:16:18	2006-08-30T18:39:32			
Read mode	TIMED	TIMED			

## 2.3 Aspect



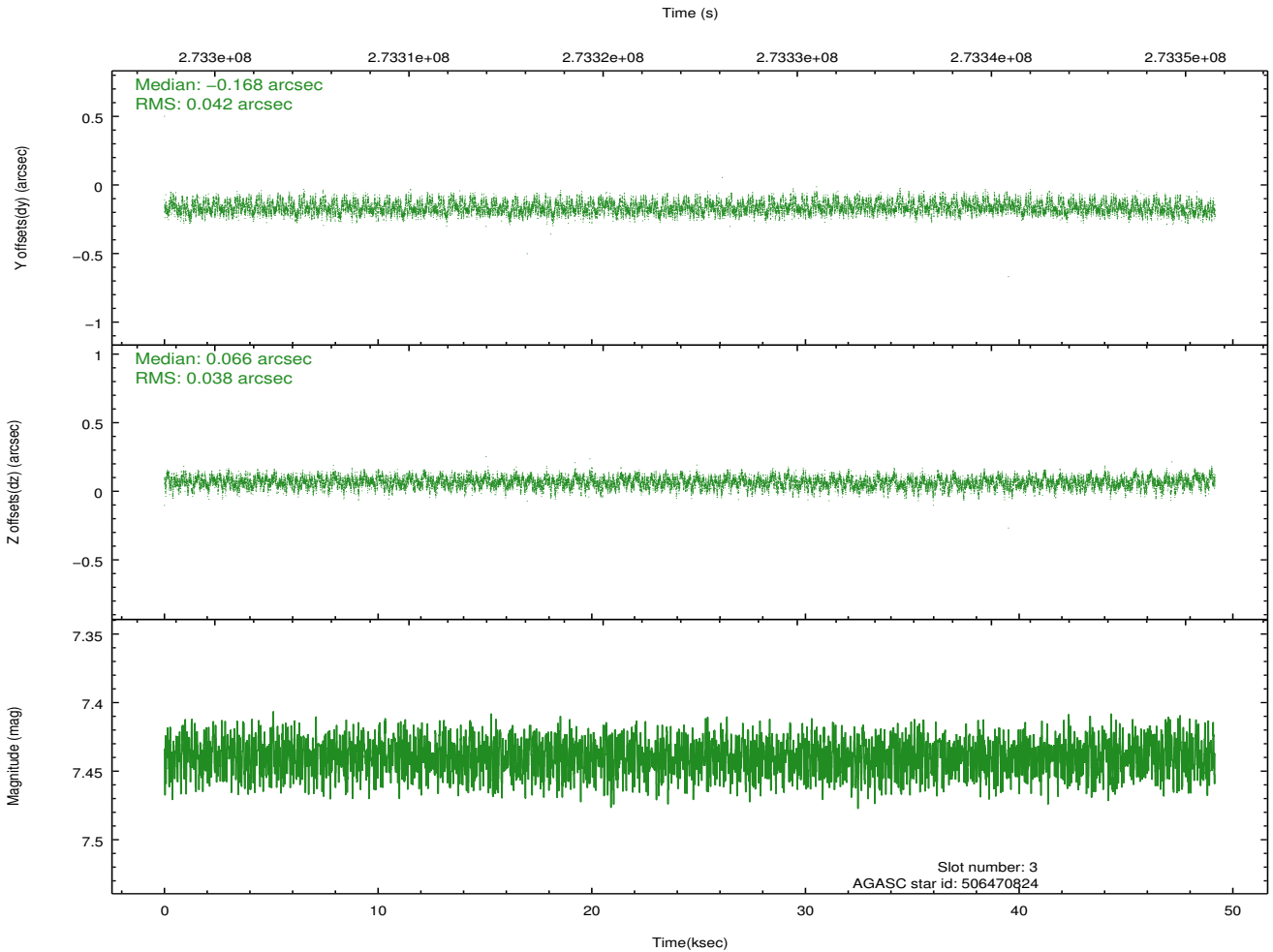
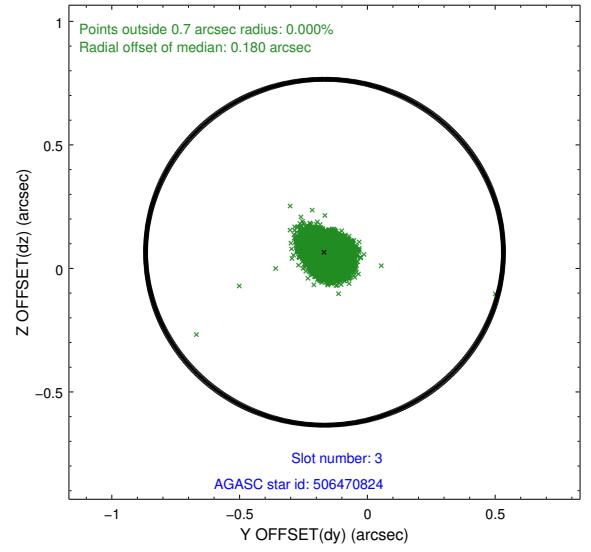
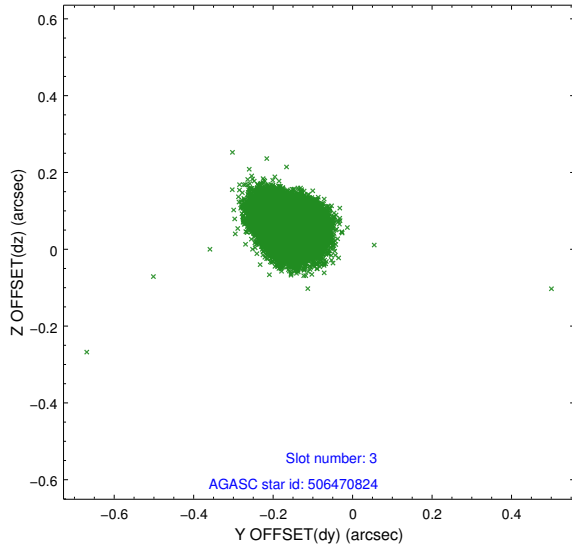


### Slot Statistics

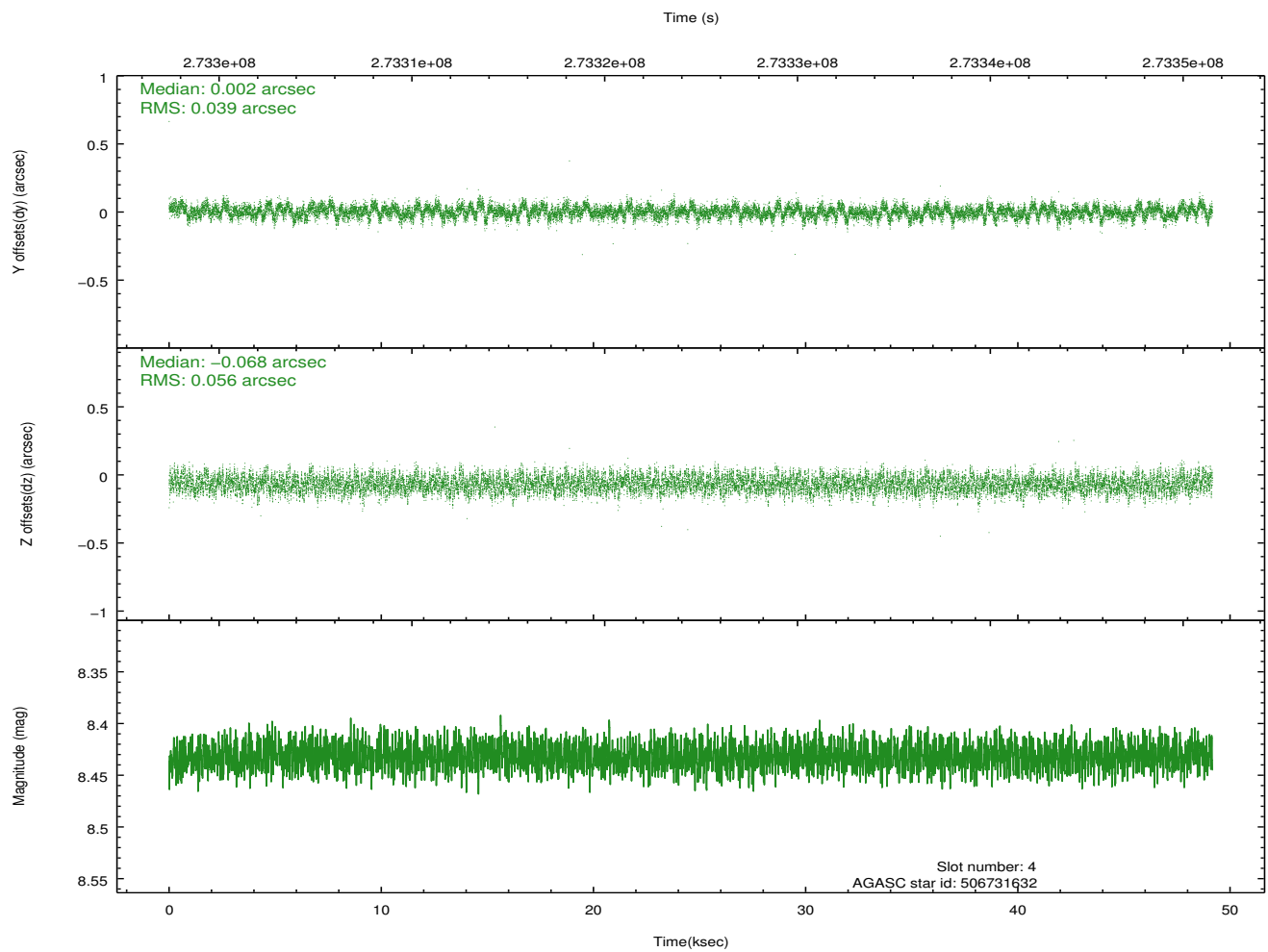
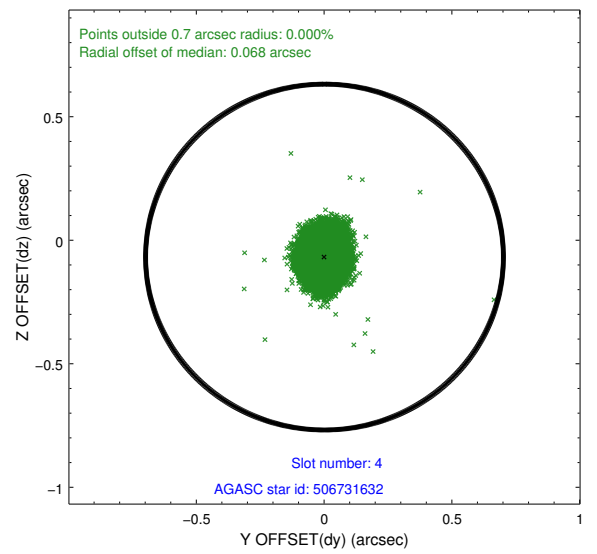
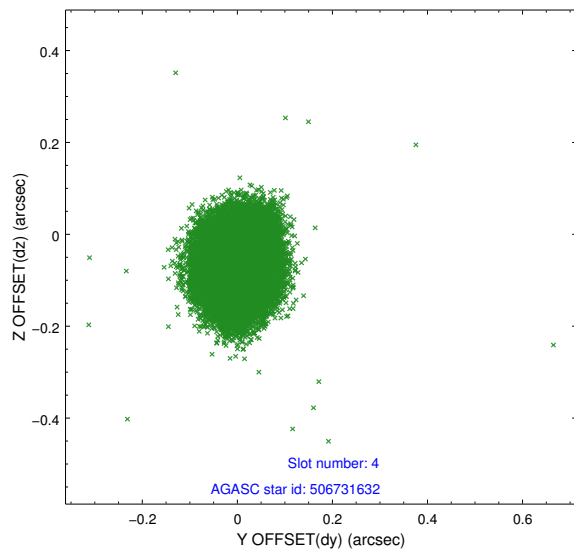
slot	status	id	mag	n_pts	med_dy	med_dz	dr1	dr2	ra	dec	mean_y	mean_z
0	FID	ACIS-I-1	7.24	11992	0.056	-0.041	0.010	0.021	0.000000	0.000000	932.05	-835.58
1	FID	ACIS-I-5	7.23	11991	-0.180	0.065	0.008	0.017	0.000000	0.000000	-1816.27	1062.07
2	FID	ACIS-I-6	7.24	11992	0.033	0.047	0.012	0.028	0.000000	0.000000	397.63	1706.50
3	GUIDE	506470824	7.44	23982	-0.168	0.066	0.061	0.096	222.702112	57.410951	1968.58	-1551.34
4	GUIDE	506731632	8.43	23979	0.002	-0.068	0.073	0.116	222.088013	58.057364	-606.25	-1971.48
5	GUIDE	506866648	8.94	23966	0.141	0.025	0.078	0.124	222.617544	58.105639	-466.08	-958.58
6	GUIDE	506866824	8.52	23975	0.040	0.004	0.075	0.116	223.367760	58.198161	-364.77	501.79
7	GUIDE	506861944	7.42	23982	-0.021	-0.028	0.066	0.107	224.335957	57.649138	2053.81	1719.55

## 2.4 Star Slots

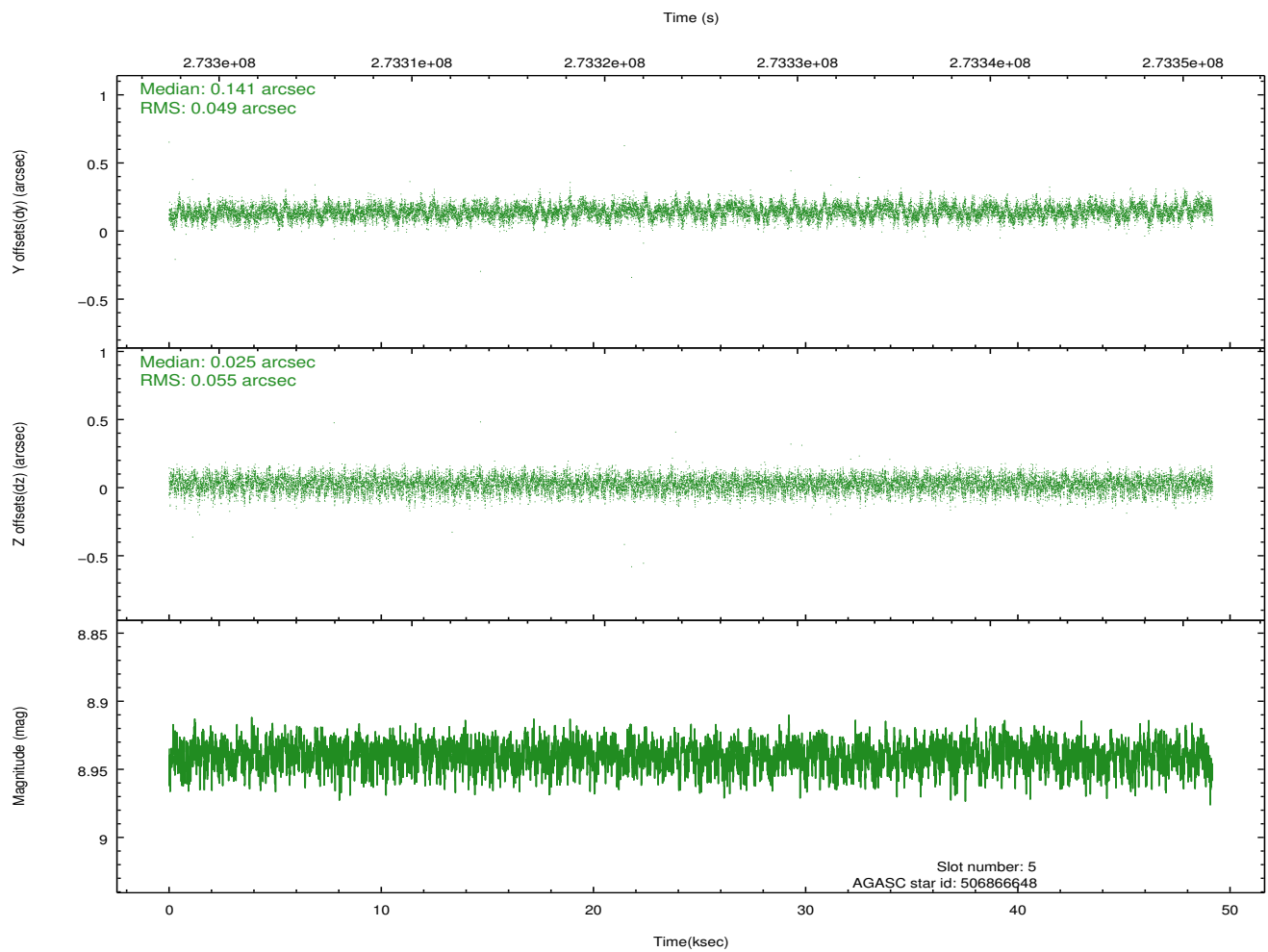
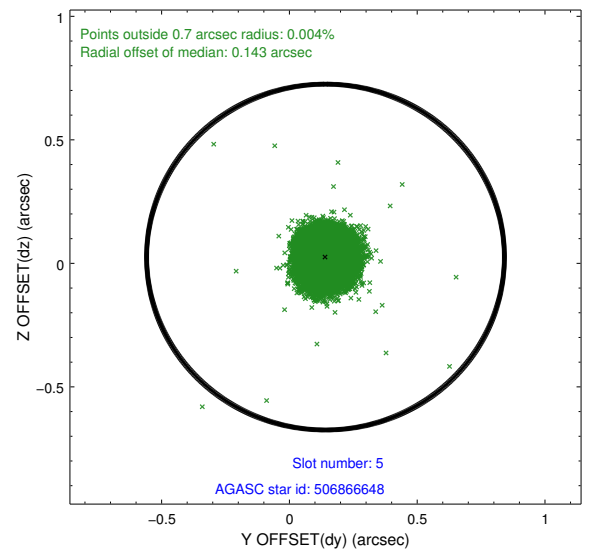
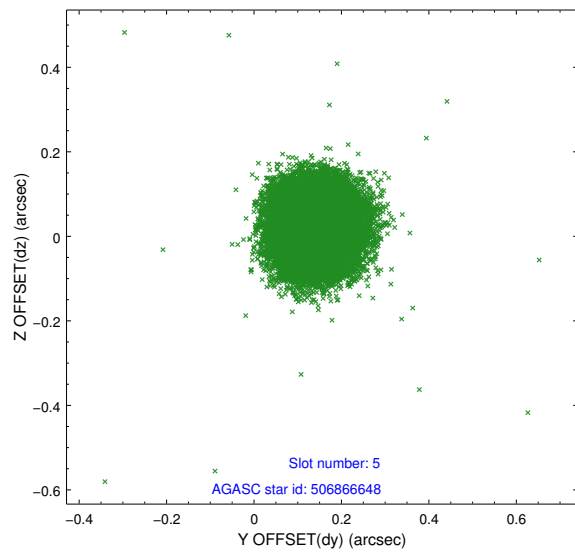
### 2.4.1 Slot 3



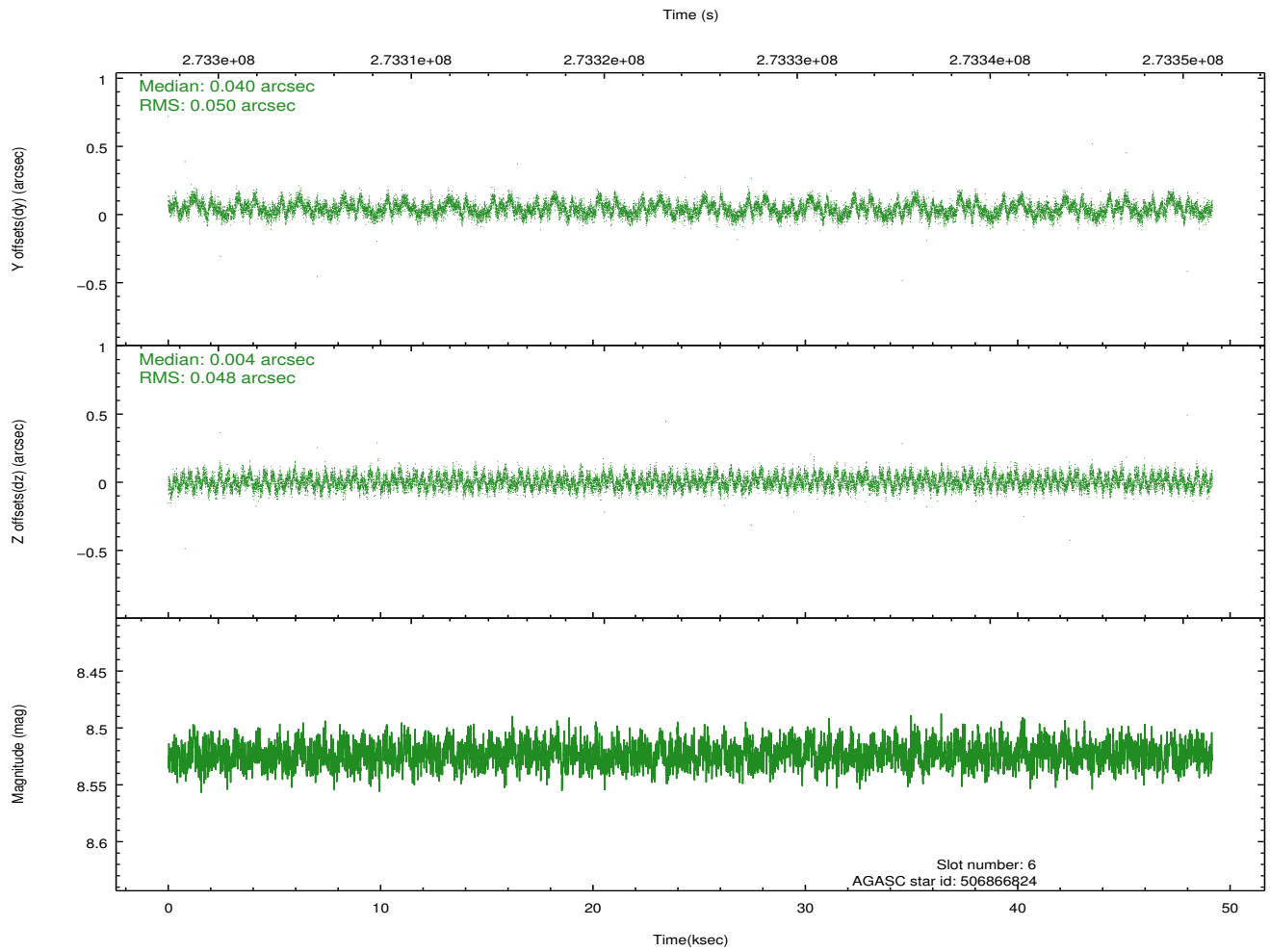
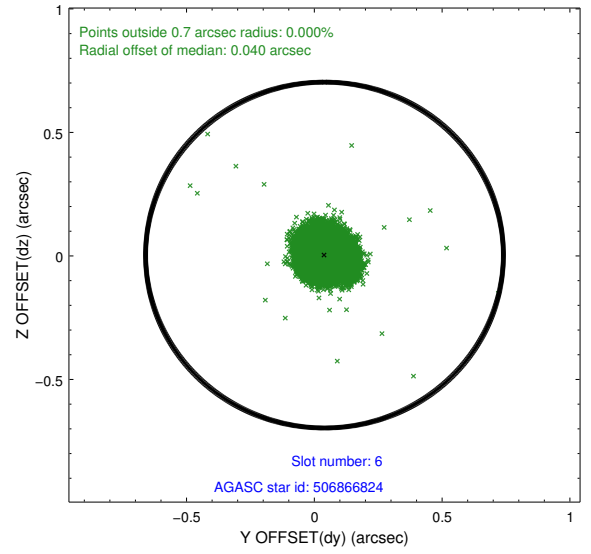
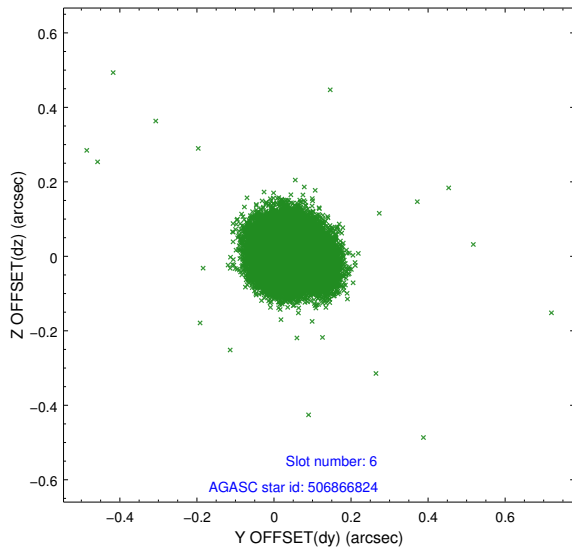
## 2.4.2 Slot 4



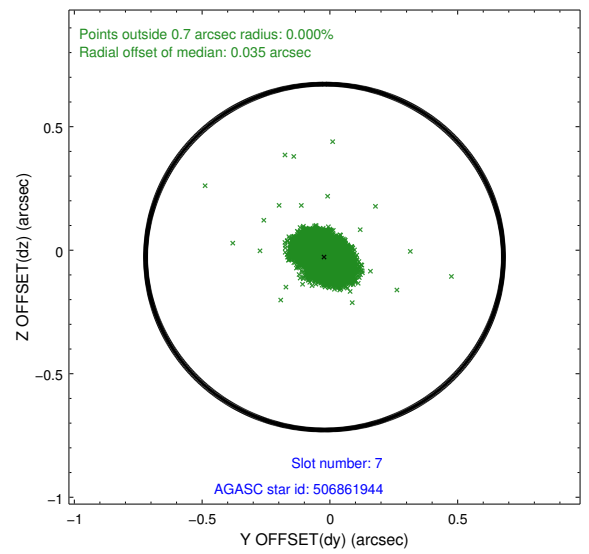
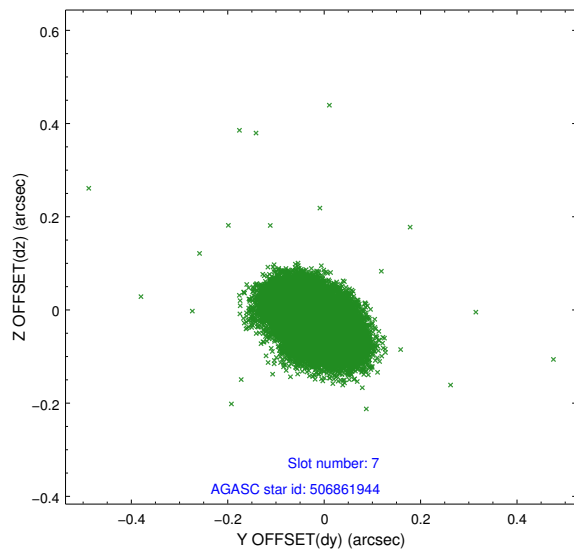
### 2.4.3 Slot 5



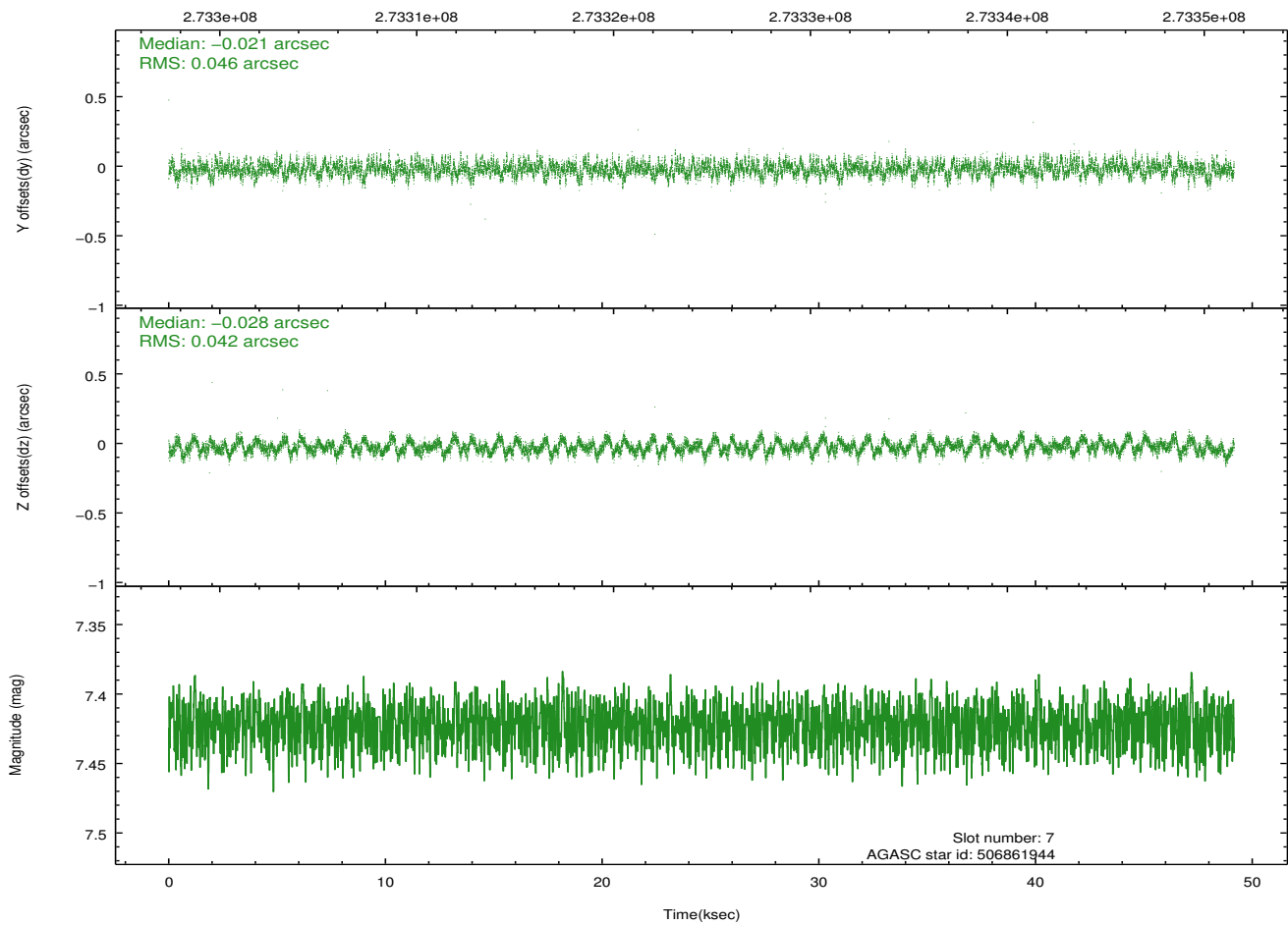
## 2.4.4 Slot 6



## 2.4.5 Slot 7

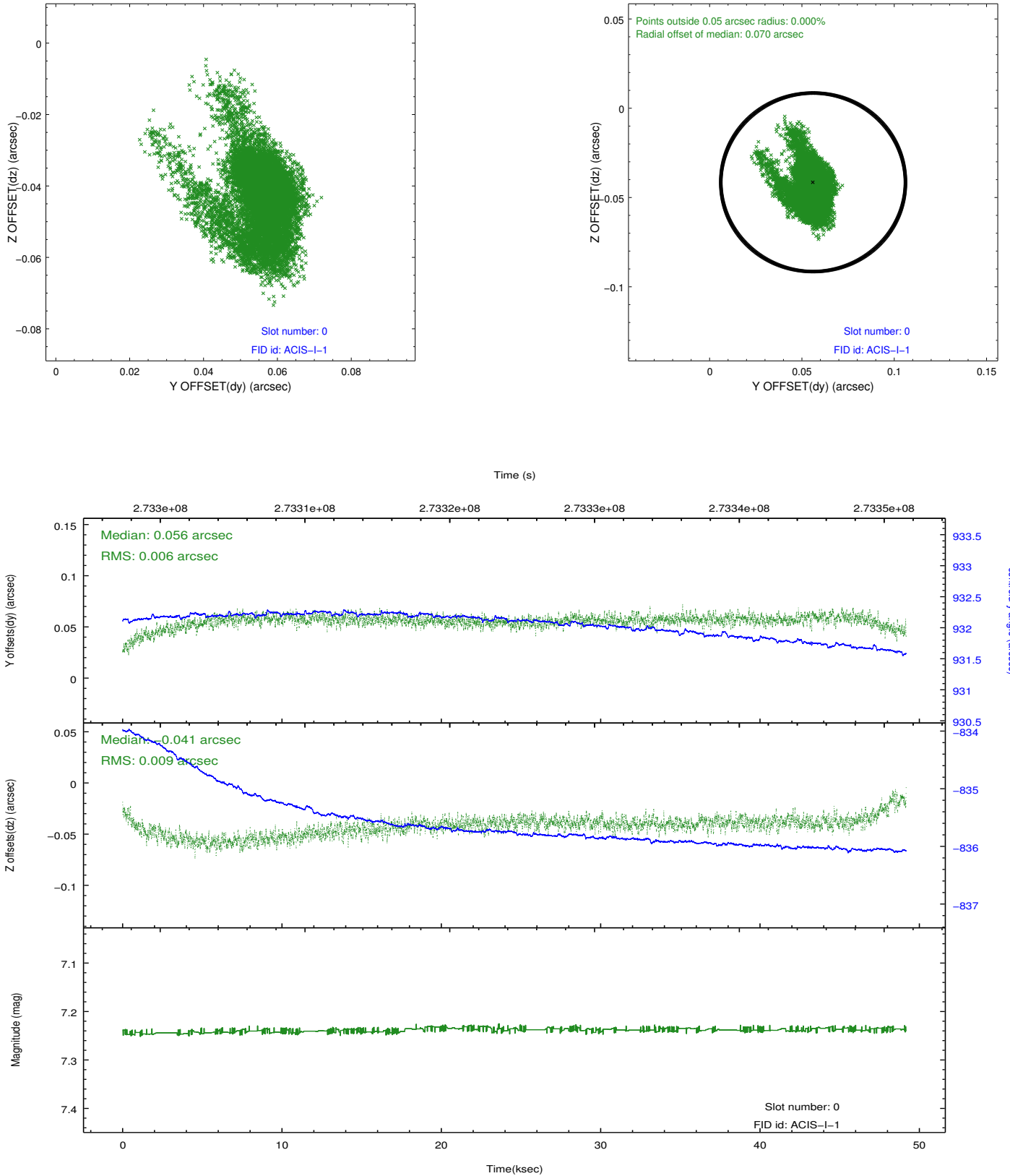


Time (s)

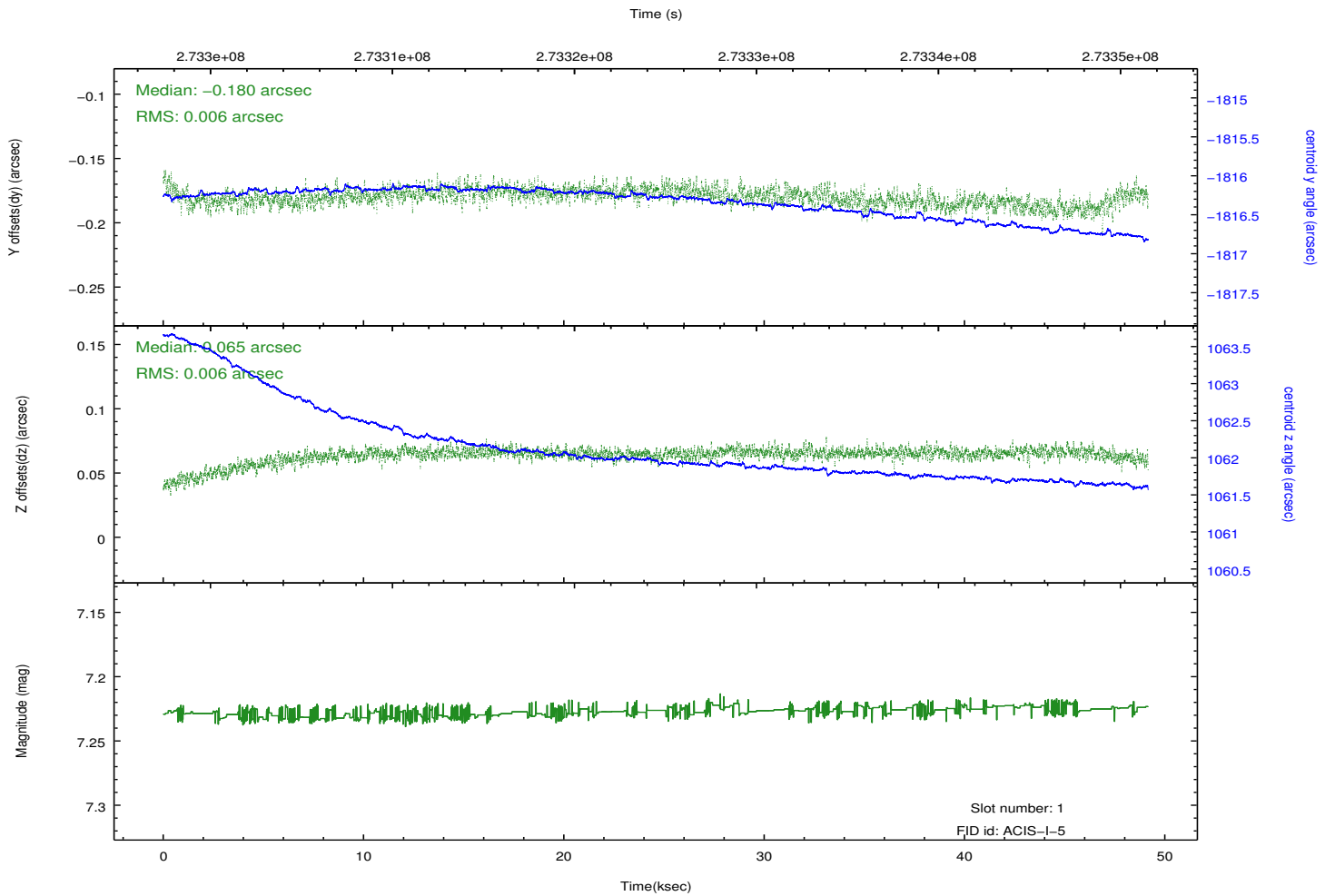
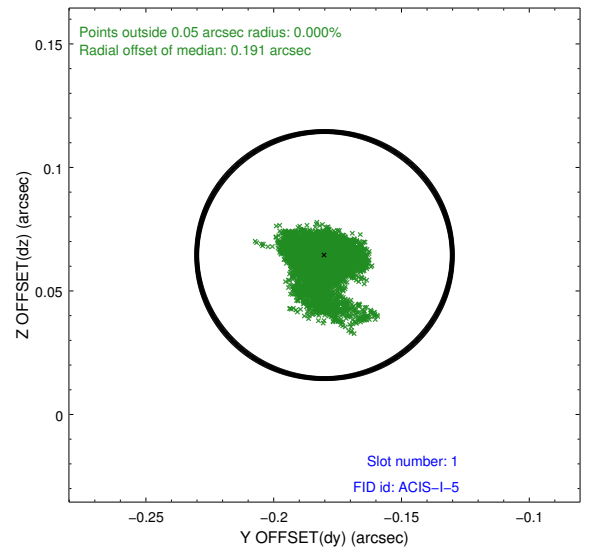
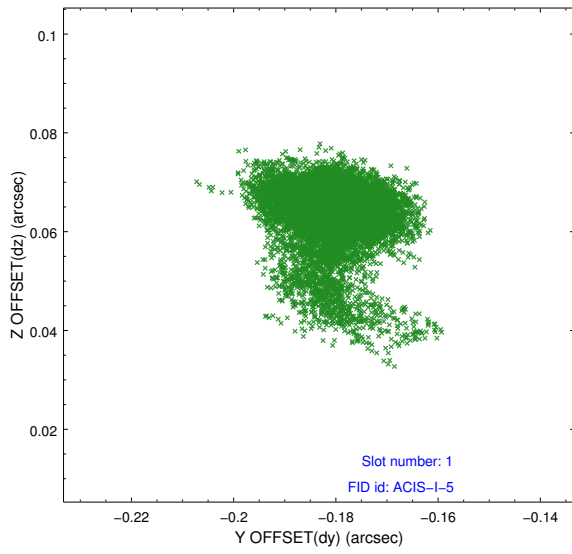


## 2.5 FID Slots

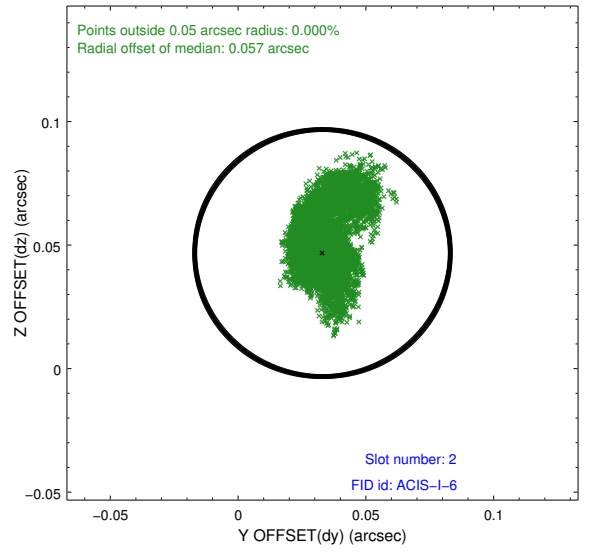
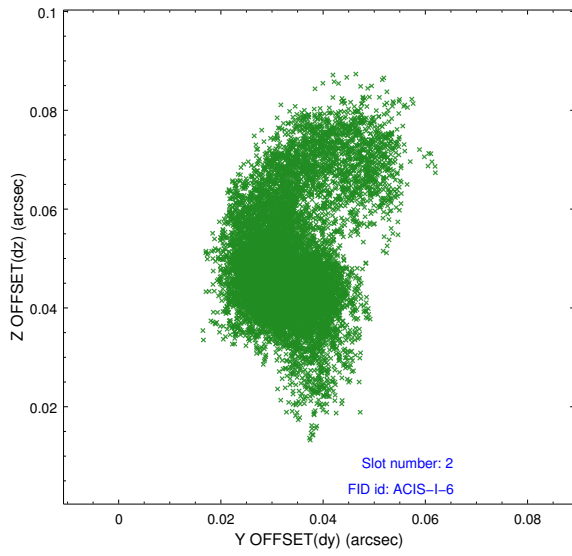
### 2.5.1 Slot 0



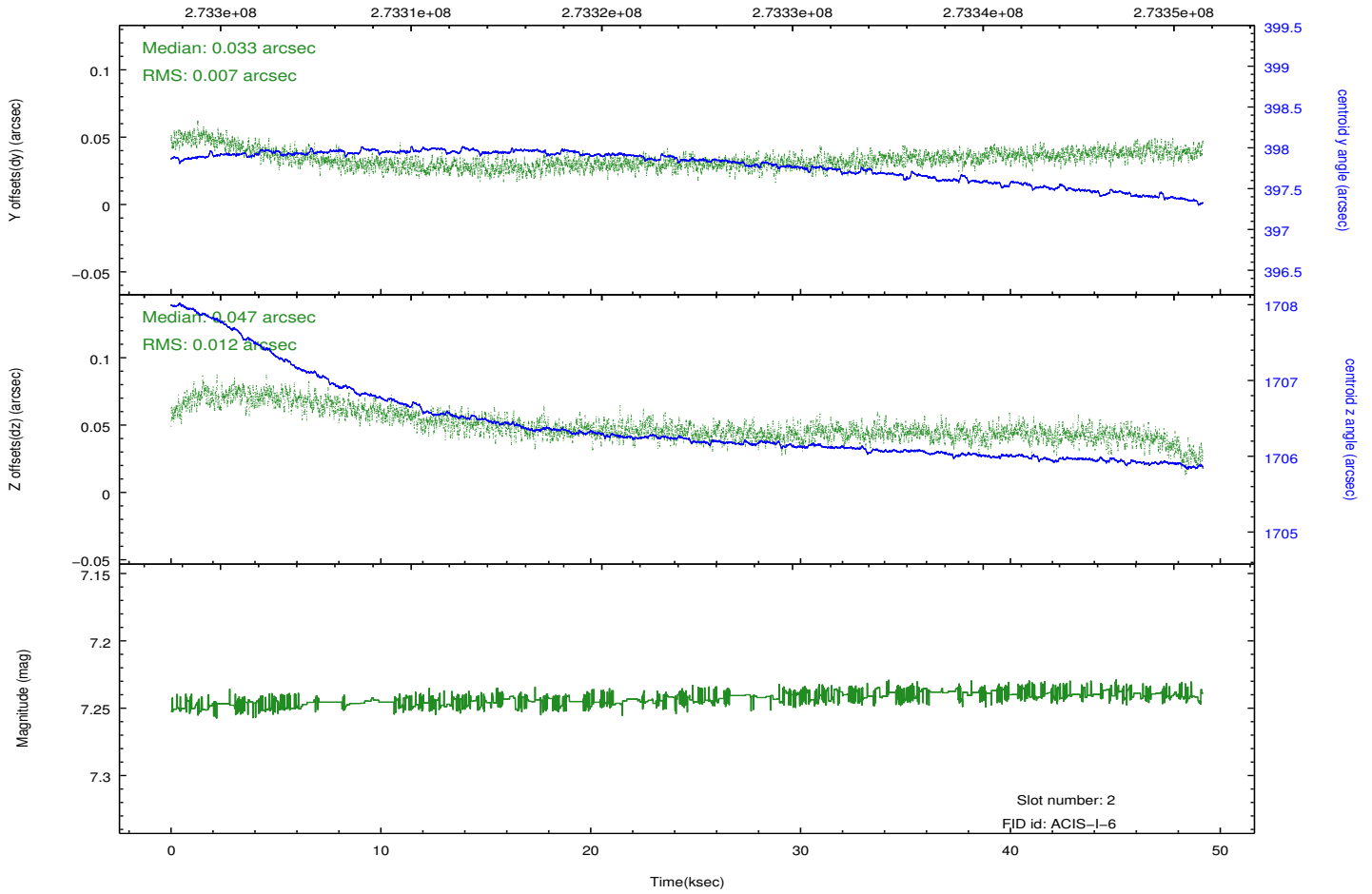
## 2.5.2 Slot 1



### 2.5.3 Slot 2



Time (s)



# A Summary

## A.1 Status

V&V Scientist	Jen Lauer
V&V Date (YYYY-MM-DD)	2012.04.08
V&V Edition	1
V&V Disposition and Status	OK
V&V Charge Time	49.1615588

## A.2 Comments