

# V&V Reference Report

## L2 ASCDS Version : 8.4.4

Observation 7616 - L2 Version 2  
Chandra X-Ray Center

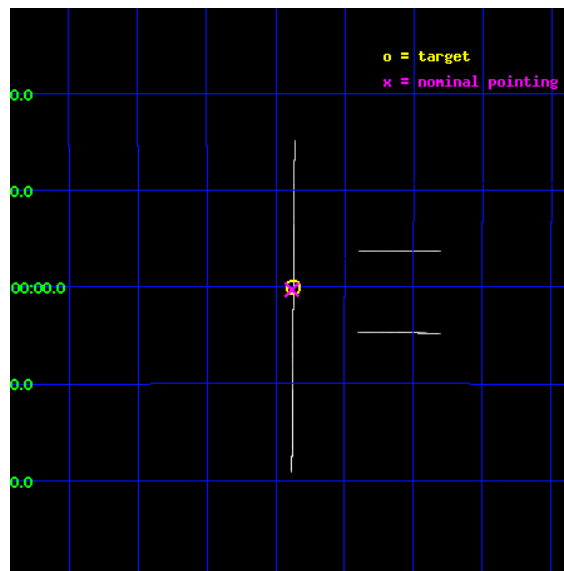
L2 Processing Date : May 3 2012

## Contents

<b>1</b>	<b>Front</b>	<b>2</b>
<b>2</b>	<b>OBI</b>	<b>3</b>
2.1	OBI . . . . .	3
2.1.1	Images . . . . .	3
2.1.2	Bias . . . . .	3
2.1.3	Parameters . . . . .	4
2.1.4	Events . . . . .	4
2.2	Compared Parameters . . . . .	5
2.3	Aspect . . . . .	6
2.4	Star Slots . . . . .	9
2.4.1	Slot 3 . . . . .	9
2.4.2	Slot 4 . . . . .	10
2.4.3	Slot 5 . . . . .	11
2.4.4	Slot 6 . . . . .	12
2.4.5	Slot 7 . . . . .	13
2.5	FID Slots . . . . .	14
2.5.1	Slot 0 . . . . .	14
2.5.2	Slot 1 . . . . .	15
2.5.3	Slot 2 . . . . .	16
<b>A</b>	<b>Summary</b>	<b>17</b>
A.1	Status . . . . .	17
A.2	Comments . . . . .	17

# 1 Front

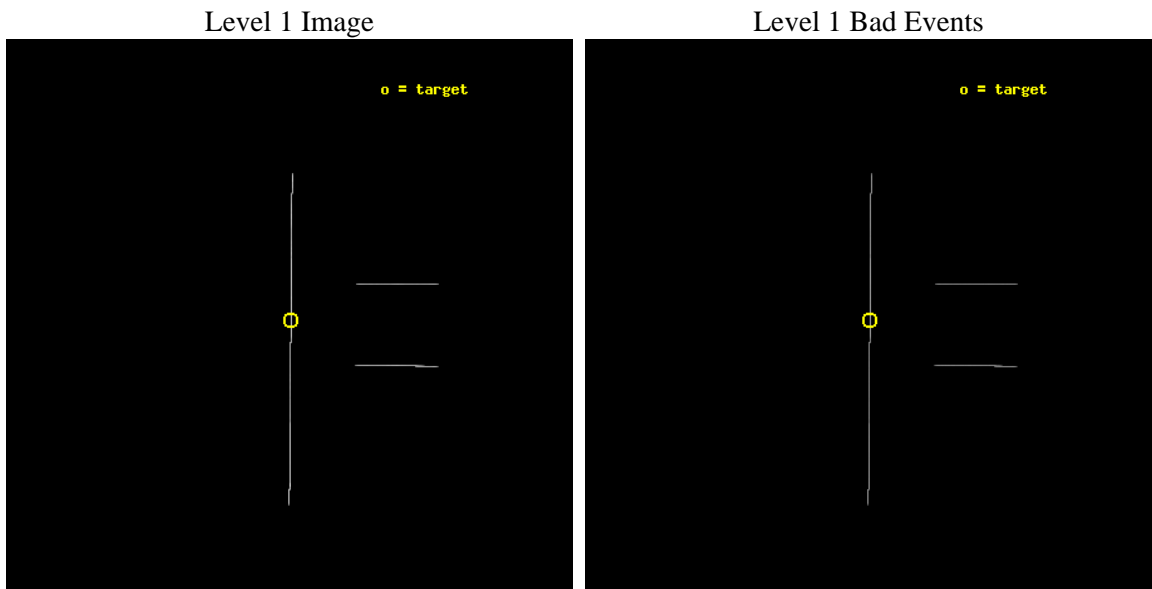
seq_num	500746	Sequence number
obs_id	7616	Observation id
title	ToO Observations of Soft Gamma Repeaters	Proposal title
observer	Dr. Peter Woods	Principal investigator
object	SGR 071017	Source name
ra_targ	274.717917	Observer's specified target RA [deg]
dec_targ	-16.001	Observer's specified target Dec [deg]
ra_nom	274.72059598362	Nominal RA [deg]
dec_nom	-16.005115733682	Nominal Dec [deg]
roll_nom	270.45736741126	Nominal Roll [deg]
revision	2	Processing version of data
ontime	40076.5	Sum of GTIs [s]
livetime	39919.951171875	Livetime [s]
ontime2	40076.5	Sum of GTIs [s]
ontime3	40076.5	Sum of GTIs [s]
ontime5	40076.5	Sum of GTIs [s]
ontime6	40076.5	Sum of GTIs [s]
ontime7	40076.5	Sum of GTIs [s]
ontime8	40076.5	Sum of GTIs [s]
l2events	718256	Number of level 2 events



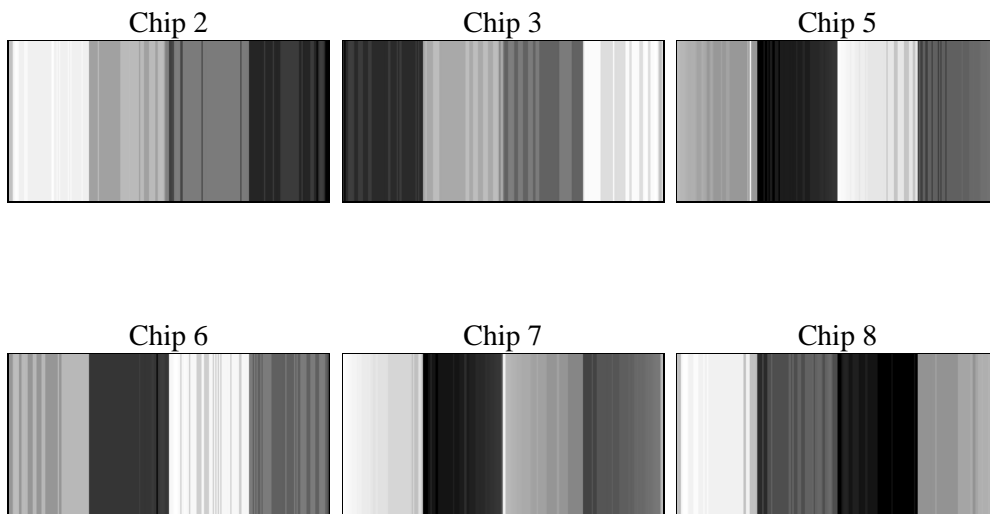
## 2 OBI

### 2.1 OBI

#### 2.1.1 Images



#### 2.1.2 Bias



### 2.1.3 Parameters

obi_num	0	Obi number	sched_exp_time	40000.000000	[s] Scheduled observation exposure time
ascdsver	8.4.4	Processing system revision	ontime	40076.5	Sum of GTIs [s]
caldbver	4.4.9	&#160	ontime2	40076.5	Sum of GTIs [s]
date	2012-05-03T13:35:12	Date and time of file creation	ontime3	40076.5	Sum of GTIs [s]
revision	2	Processing version of data	ontime5	40076.5	Sum of GTIs [s]
			ontime6	40076.5	Sum of GTIs [s]
			ontime7	40076.5	Sum of GTIs [s]
			ontime8	40076.5	Sum of GTIs [s]
			l1events	1057212	Number of level 1 events

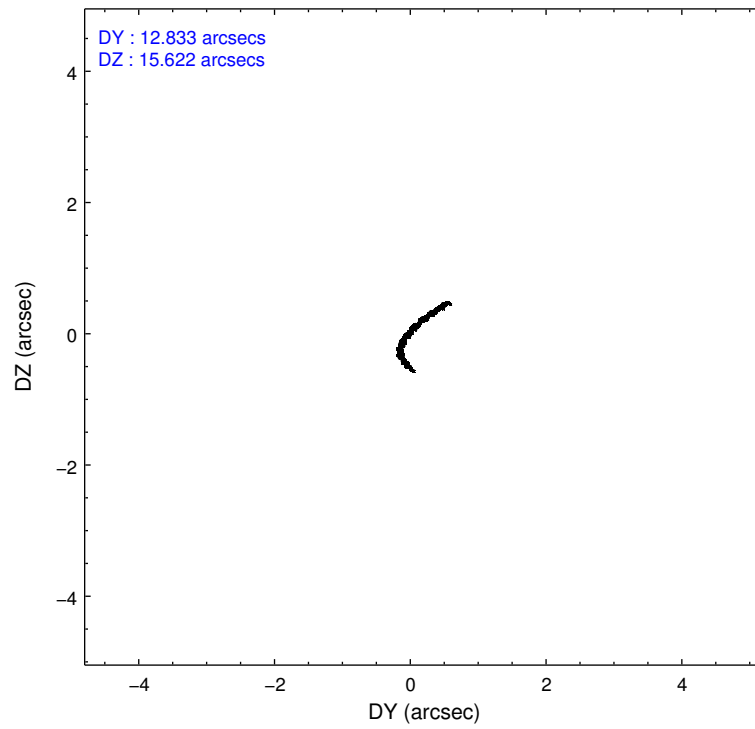
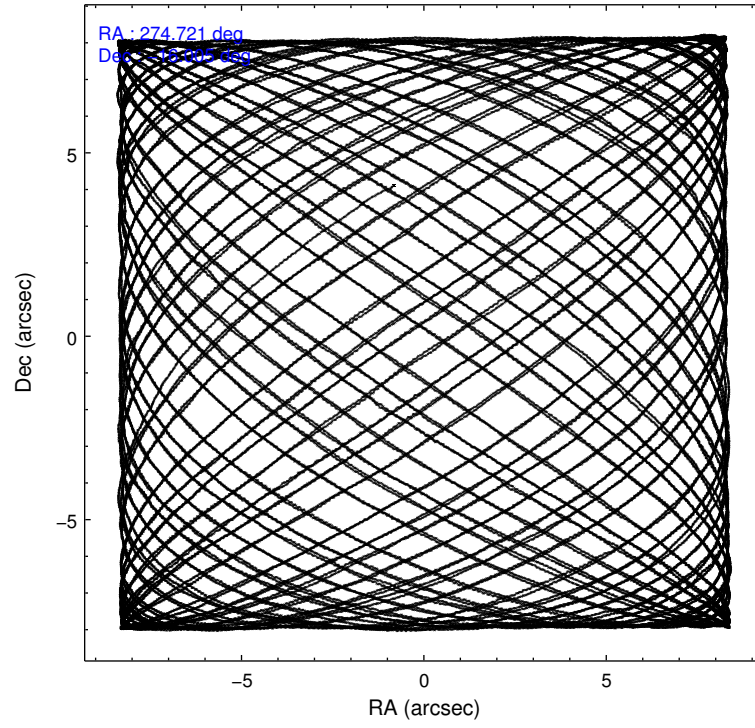
### 2.1.4 Events

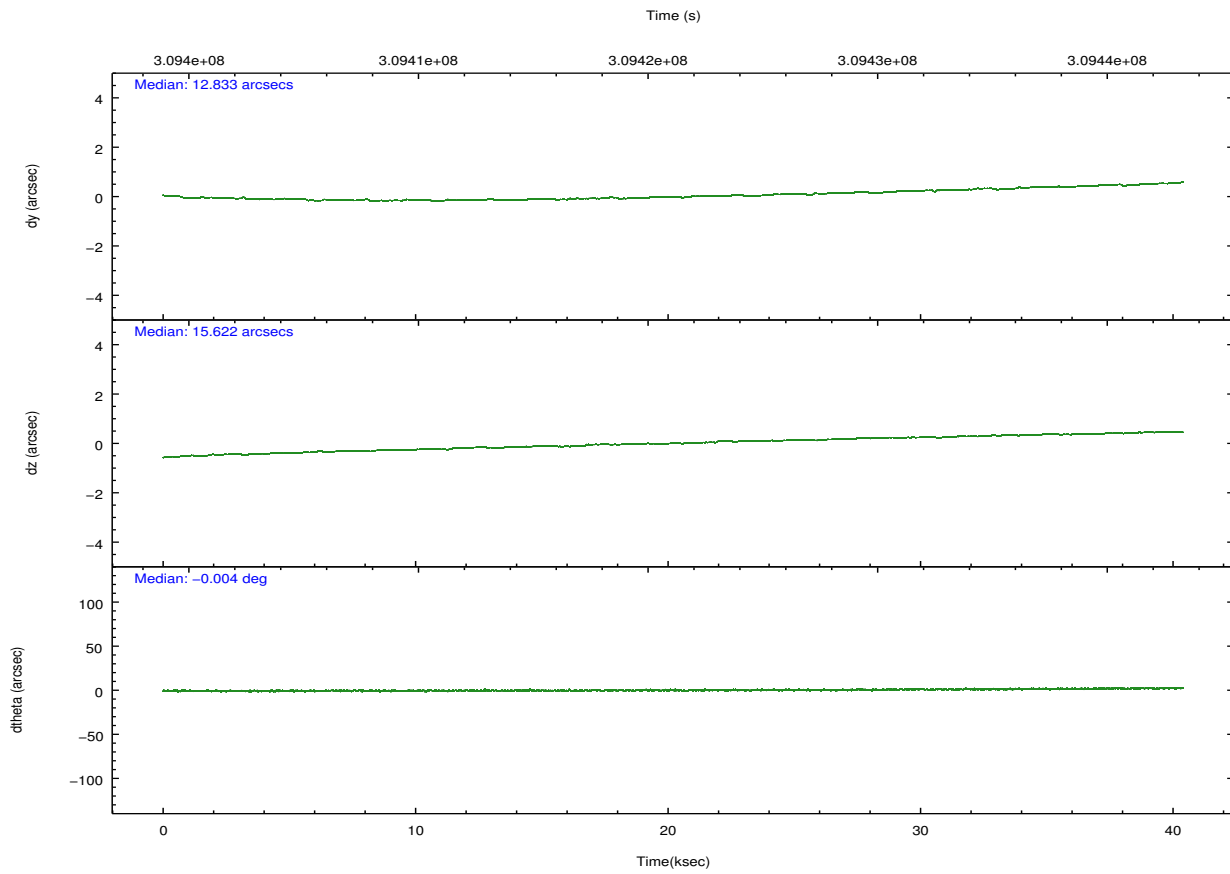
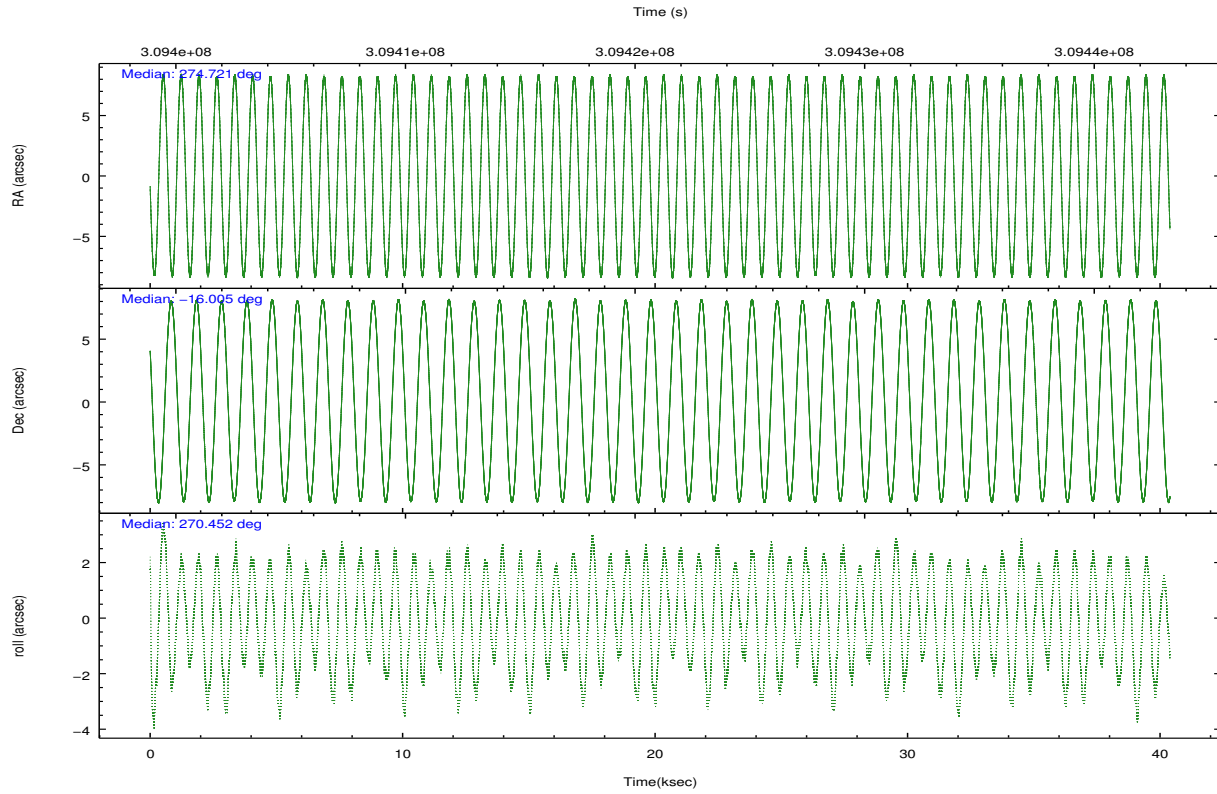
	ccd 2	ccd 3	ccd 5	ccd 6	ccd 7	ccd 8		ccd 2	ccd 3	ccd 5	ccd 6	ccd 7	ccd 8
level 1 events	80024	86730	359184	89998	260142	181134	grade 0 events	10078	10042	56518	9384	18032	32857
rejected events	14942	16108	35514	17230	43328	24407		12%	11%	15%	10%	6%	18%
rejected %	18%	18%	9%	19%	16%	13%	grade 1 events	355	330	634	315	626	624
								0%	0%	0%	0%	0%	0%
							grade 2 events	25674	28652	95933	29124	56192	49475
								32%	33%	26%	32%	21%	27%
							grade 3 events	7913	8836	7036	8973	14352	17029
								9%	10%	1%	9%	5%	9%
							grade 4 events	7958	7954	6711	8321	13964	16360
								9%	9%	1%	9%	5%	9%
							grade 5 events	14576	15767	34854	16911	42673	23778
								18%	18%	9%	18%	16%	13%
							grade 6 events	13470	15149	157498	16970	114303	41011
								16%	17%	43%	18%	43%	22%
							grade 7 events	0	0	0	0	0	0
								0%	0%	0%	0%	0%	0%

## 2.2 Compared Parameters

Parameter	Planned	Actual	Parameter	Planned	Actual
Instrument	ACIS	ACIS	Obspar format version number	7	7
Detector	ACIS-235678	ACIS-235678	Obspar file type	PREDICTED	ACTUAL
Grating	NONE	NONE	Obspar update status	NONE	UPDATED
Data mode	CC33_FAINT	CC33_FAINT	Number of optional ACIS chips dropped	0	0
Observation mode	POINTING	POINTING	On-chip summing requested	N	N
[deg] Pointing RA	274.705842	274.7205959836189	Subarray requested	NONE	NONE
[deg] Pointing Dec	-15.981730	-16.00511573368165	Alternating exposures requested	N	N
[deg] Pointing Roll	270.296678	270.4573674112556	[s] Primary exposure time	0.000000	0
[mm] SIM focus pos	-0.684267	-0.6828225247311905			
[mm] SIM defocus	0	0.001444936568705701			
[mm] SIM translation stage pos	-190.132523	-190.1400660498719			
[mm] SIM translation stage offset	0	0.00754346686406393			
[s] Observation start time (MET)	309401287.184000	309400705.03162			
Observation start date	2007-10-22T00:47:02	2007-10-22T00:38:25			
[s] Observation end time (MET)	309441287.184000	309442451.74614			
Observation end date	2007-10-22T11:53:42	2007-10-22T12:14:11			
Read mode	CONTINUOUS	CONTINUOUS			

## 2.3 Aspect



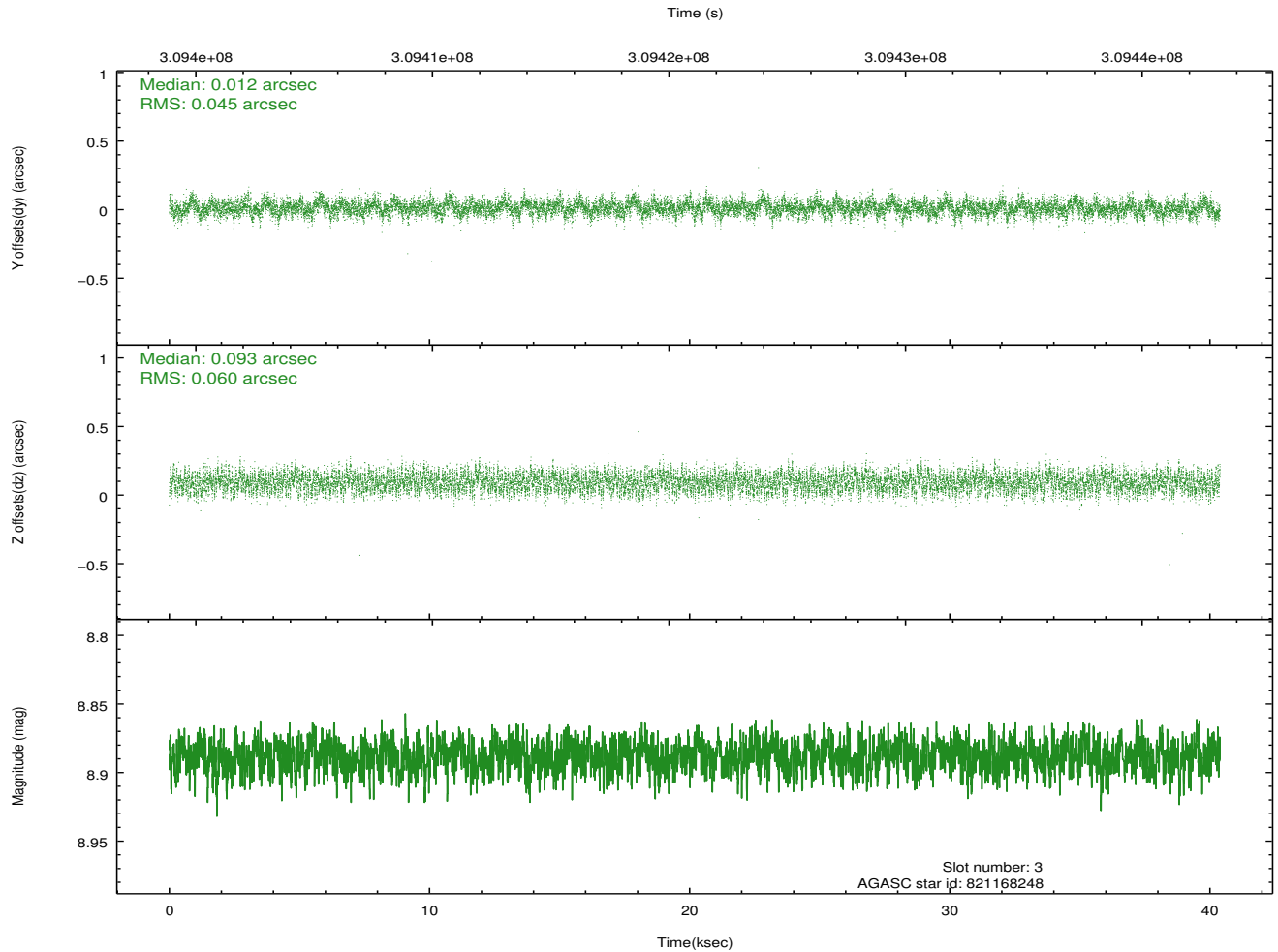
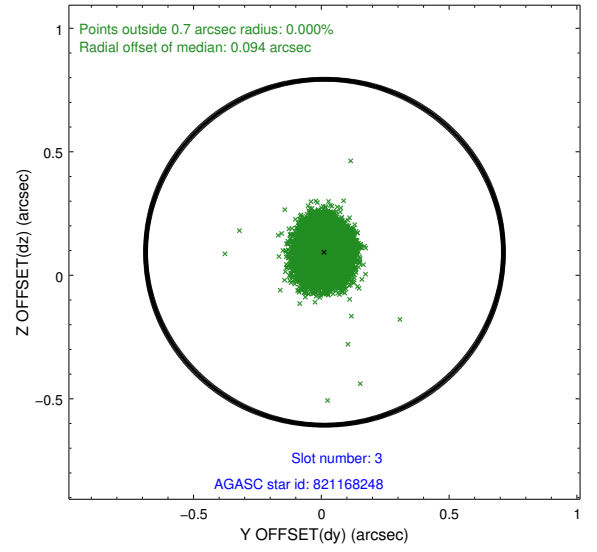
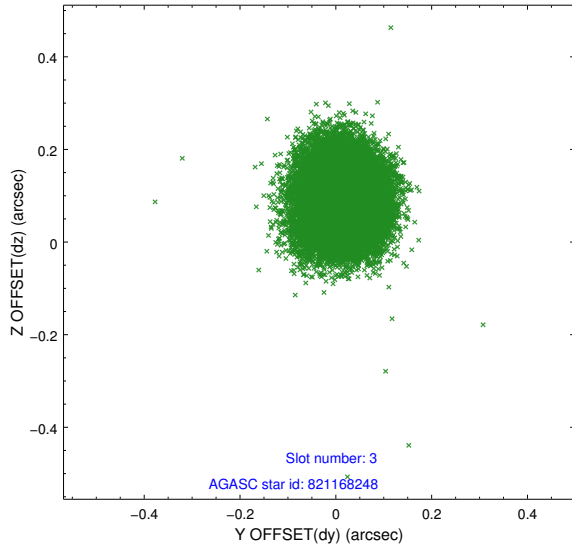


### Slot Statistics

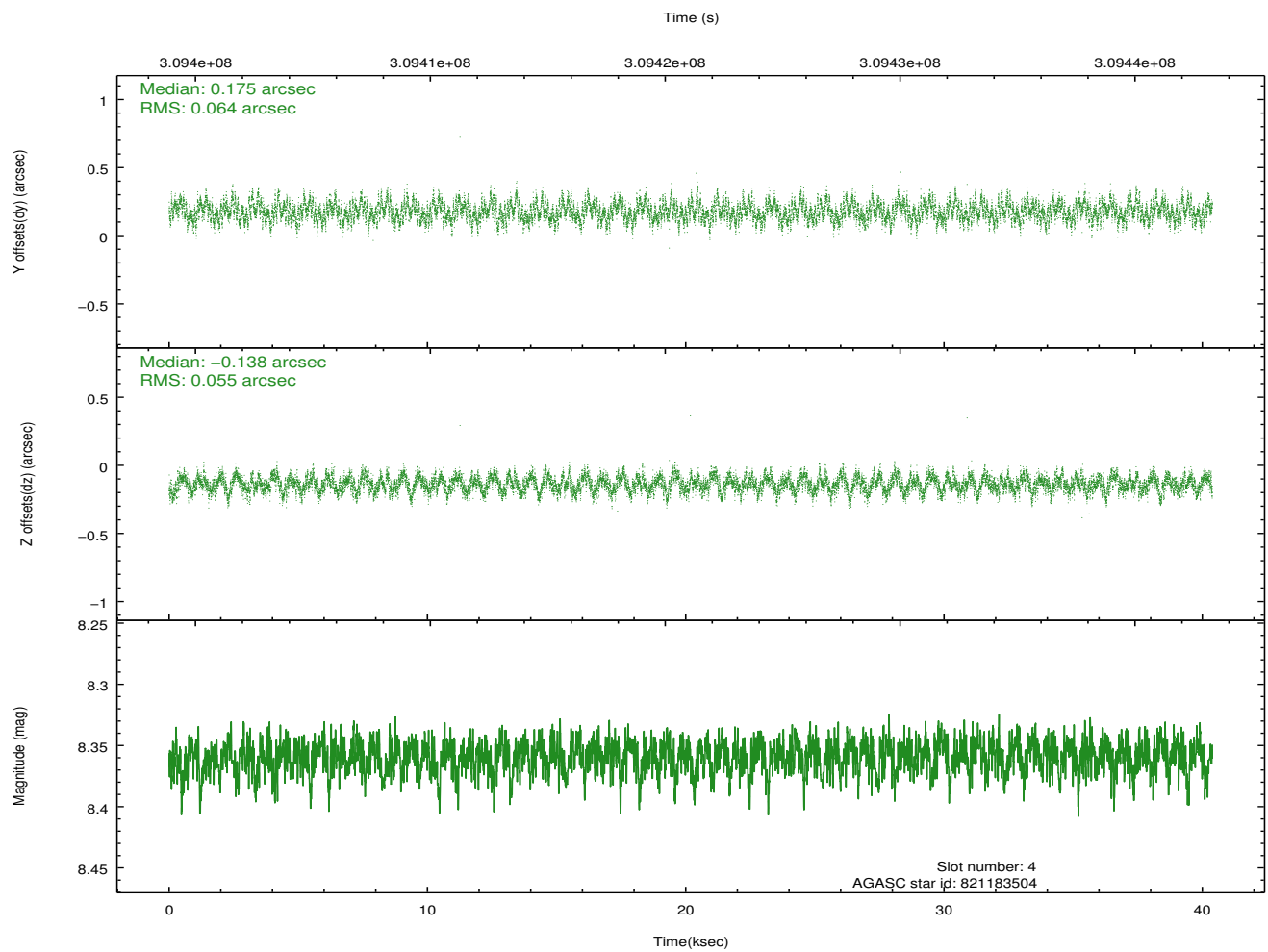
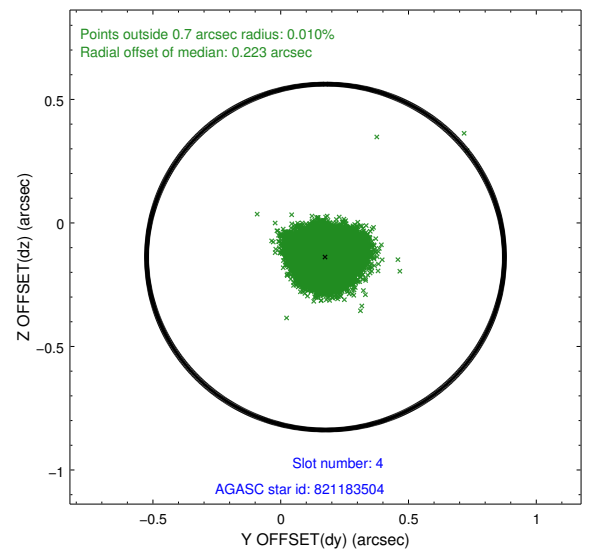
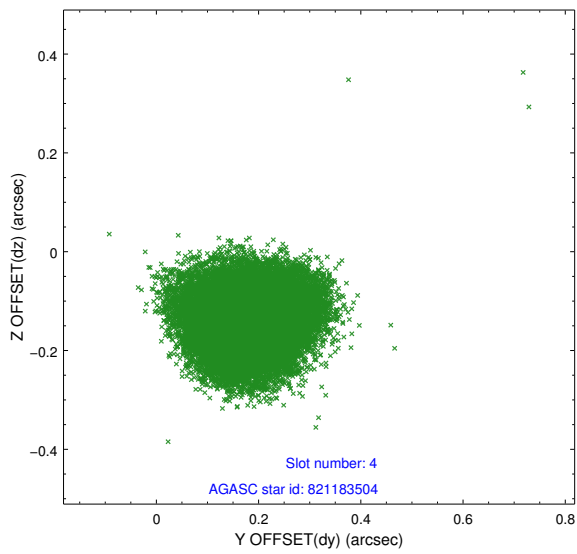
slot	status	id	mag	n_pts	med_dy	med_dz	dr1	dr2	ra	dec	mean_y	mean_z
0	FID	ACIS-S-2	7.09	9852	-0.079	-0.056	0.008	0.014	0.000000	0.000000	-765.90	-1737.07
1	FID	ACIS-S-4	7.19	9851	0.103	0.028	0.007	0.012	0.000000	0.000000	2147.56	171.47
2	FID	ACIS-S-6	7.32	9849	-0.052	0.035	0.008	0.013	0.000000	0.000000	396.13	808.90
3	GUIDE	821168248	8.89	19683	0.012	0.093	0.081	0.126	274.322211	-15.621827	-1301.00	-1323.37
4	GUIDE	821183504	8.36	19697	0.175	-0.138	0.092	0.141	274.206900	-16.517860	1923.72	-1732.11
5	GUIDE	821179256	7.45	19702	-0.218	0.017	0.053	0.083	274.840900	-15.612800	-1325.54	474.98
6	GUIDE	821169272	7.21	19697	-0.016	-0.008	0.062	0.102	275.312025	-16.375484	1431.35	2086.59
7	GUIDE	821181752	7.55	19637	0.041	0.031	0.062	0.095	275.331456	-16.373905	1426.44	2153.88

## 2.4 Star Slots

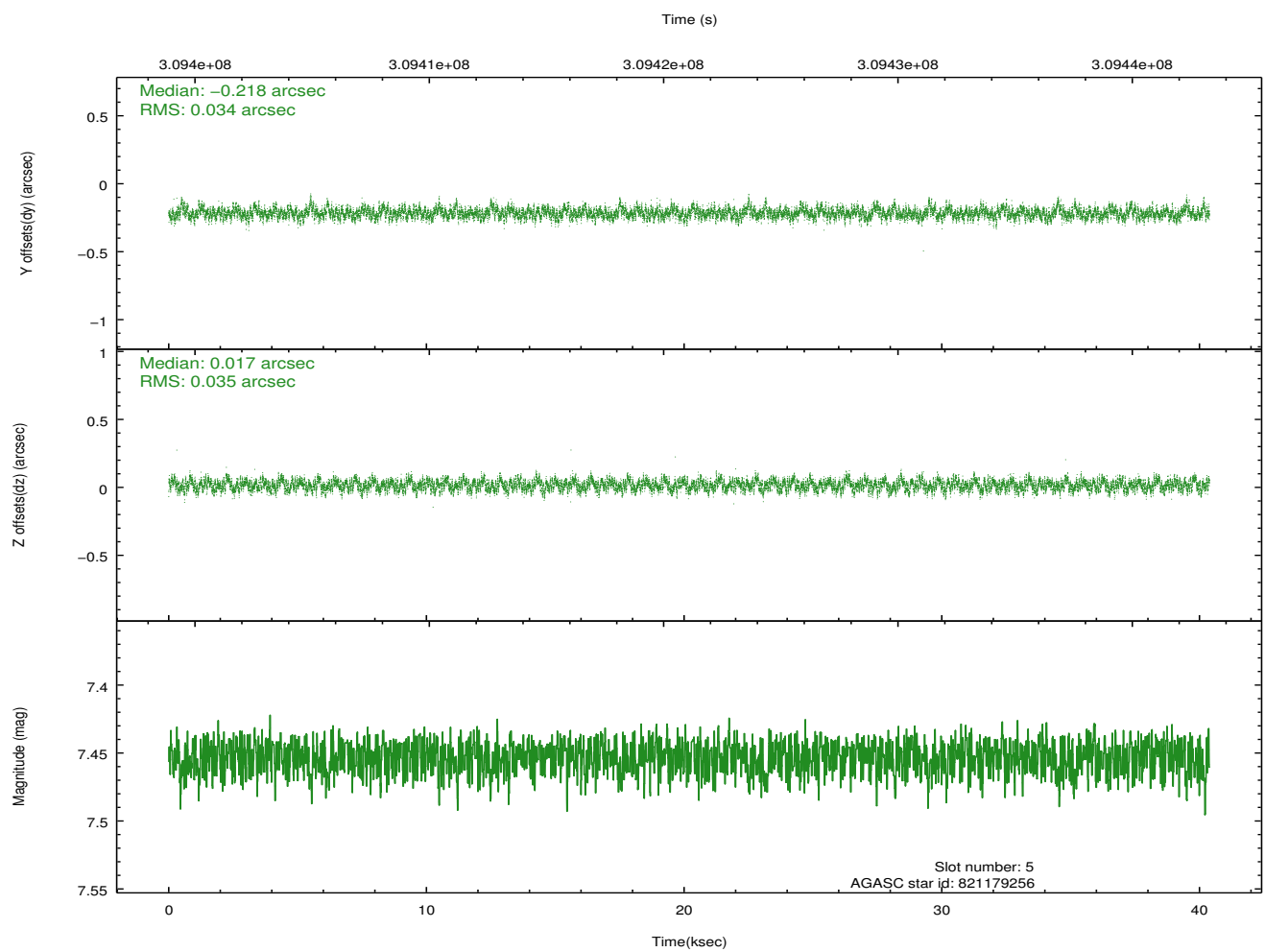
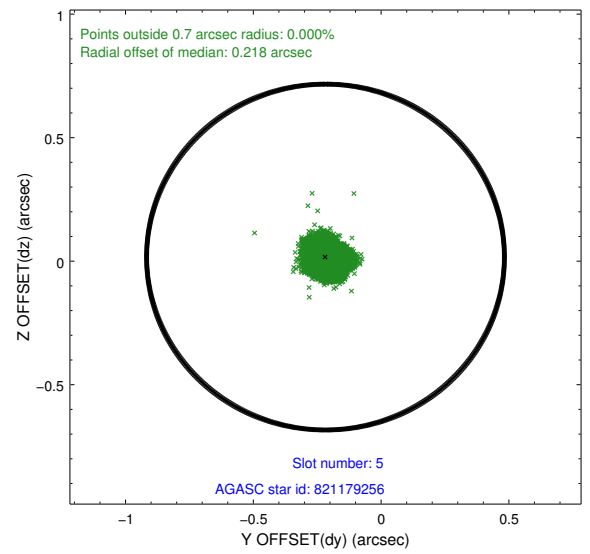
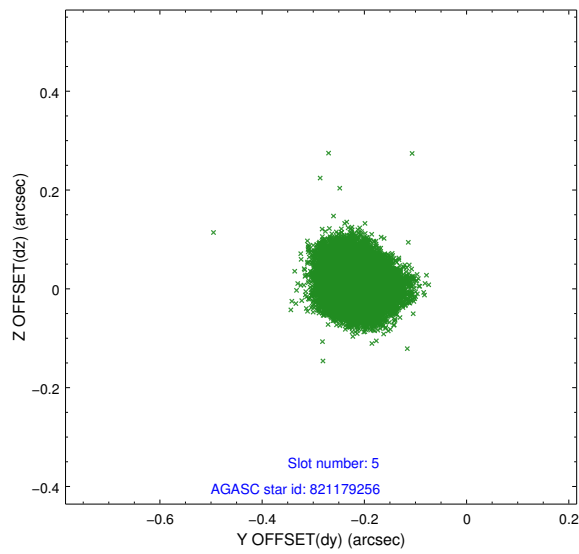
### 2.4.1 Slot 3



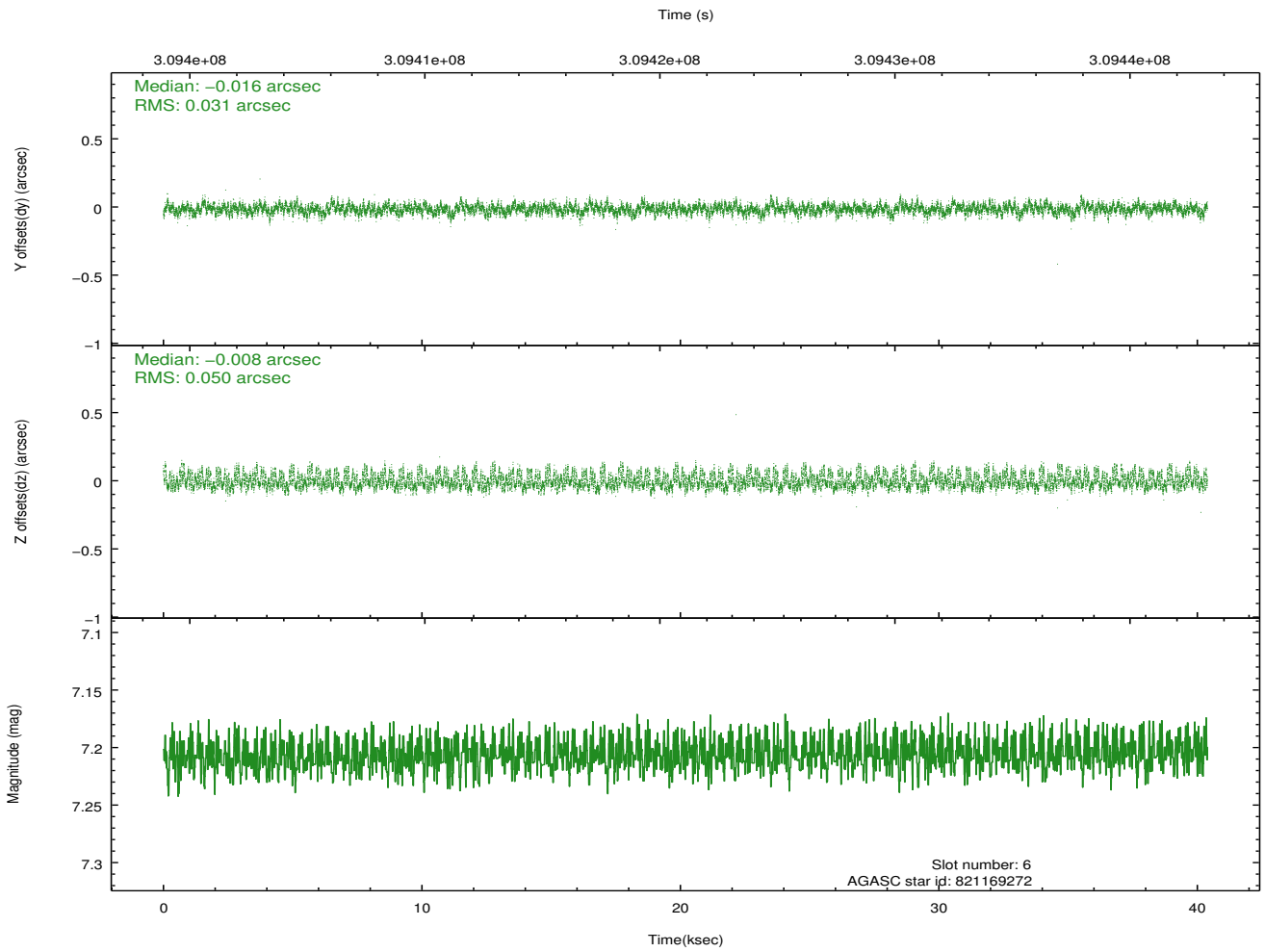
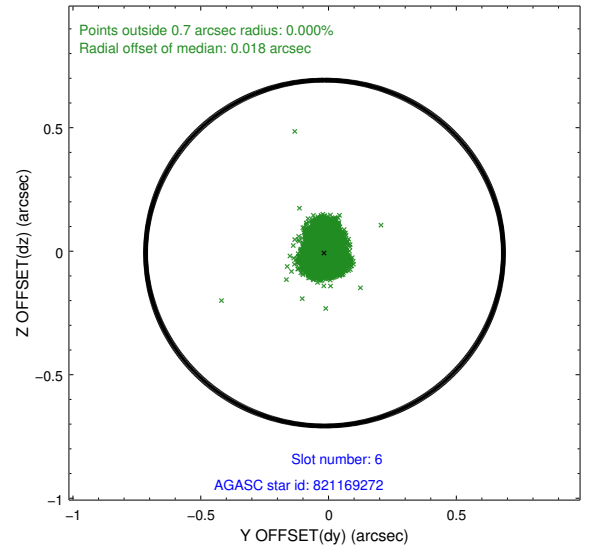
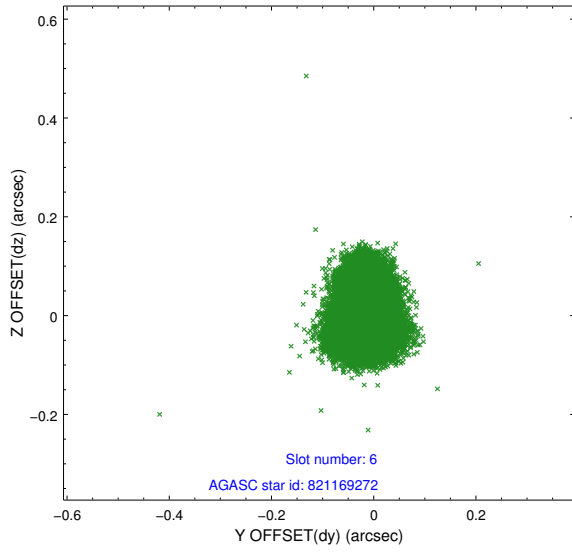
## 2.4.2 Slot 4



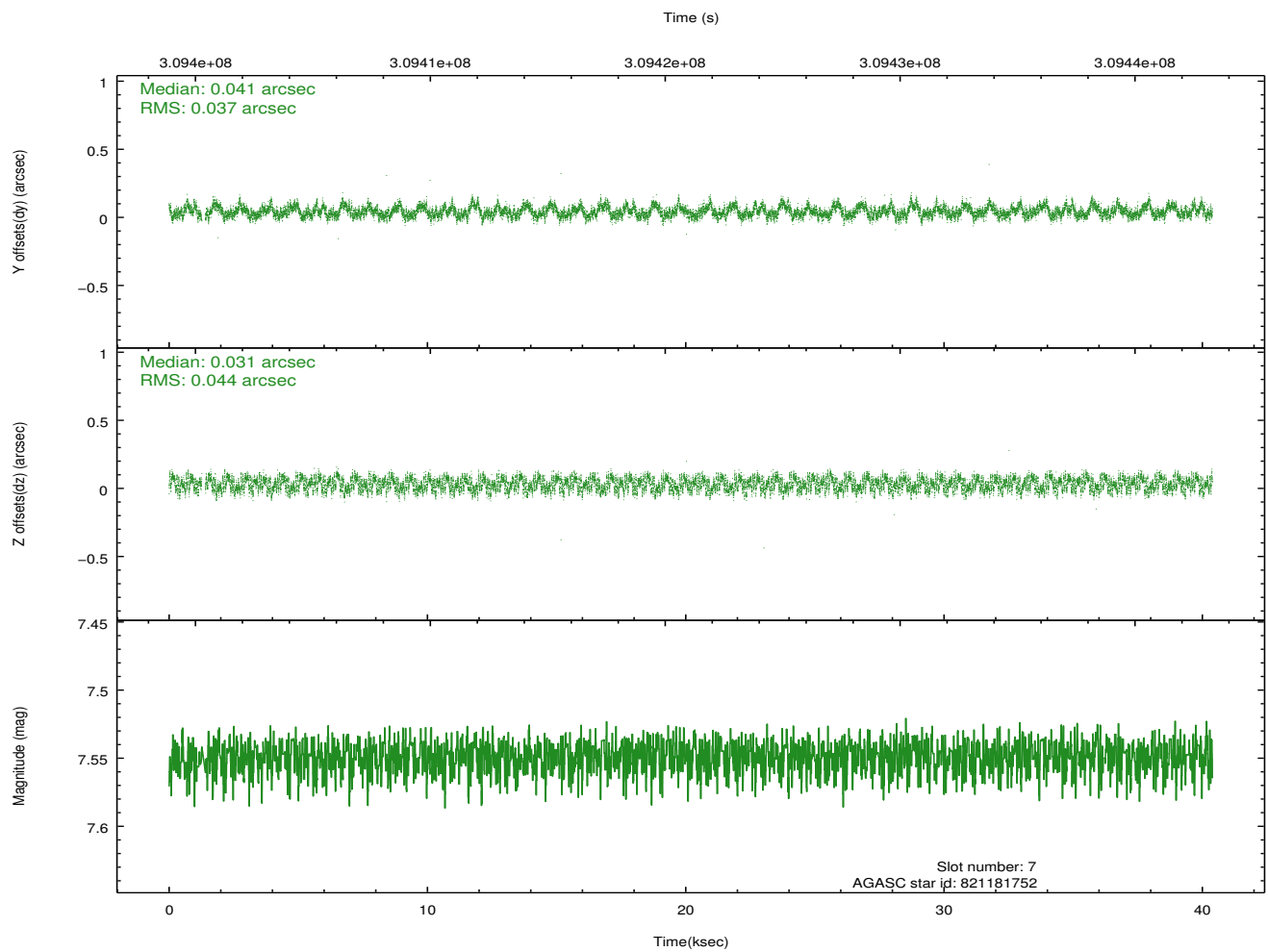
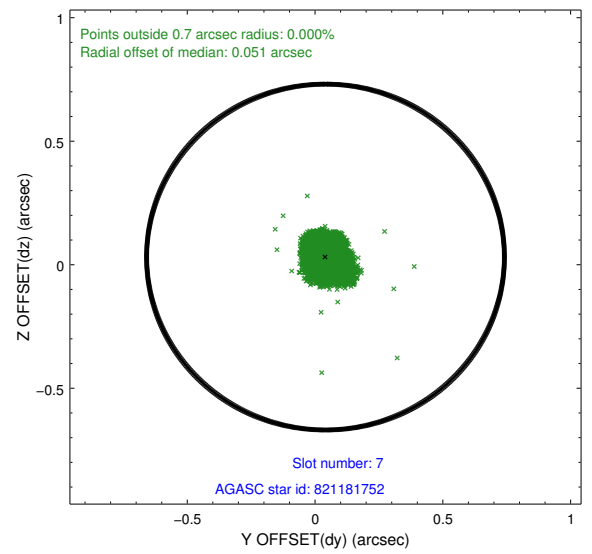
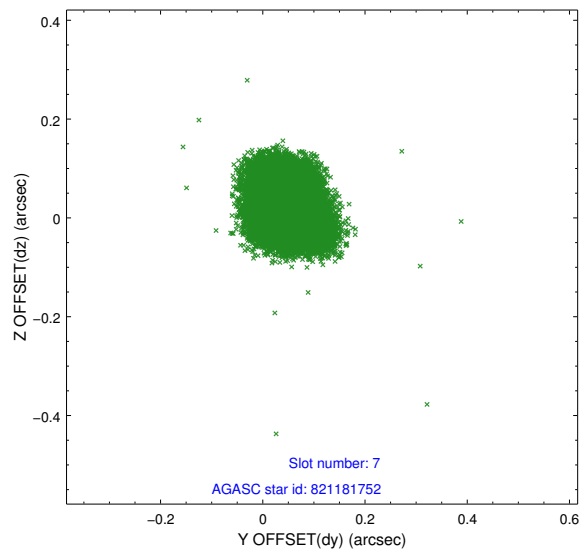
### 2.4.3 Slot 5



### 2.4.4 Slot 6

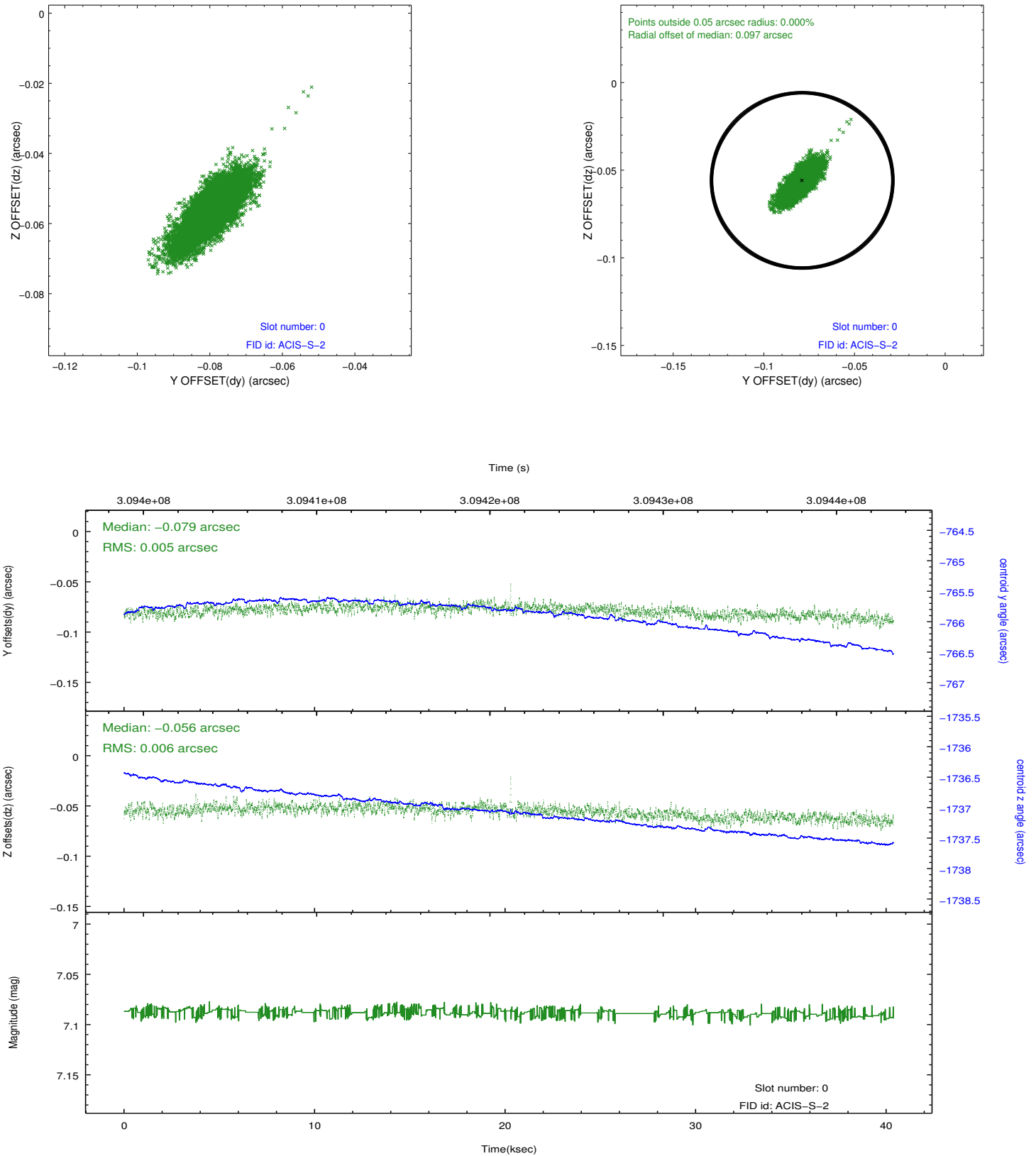


## 2.4.5 Slot 7

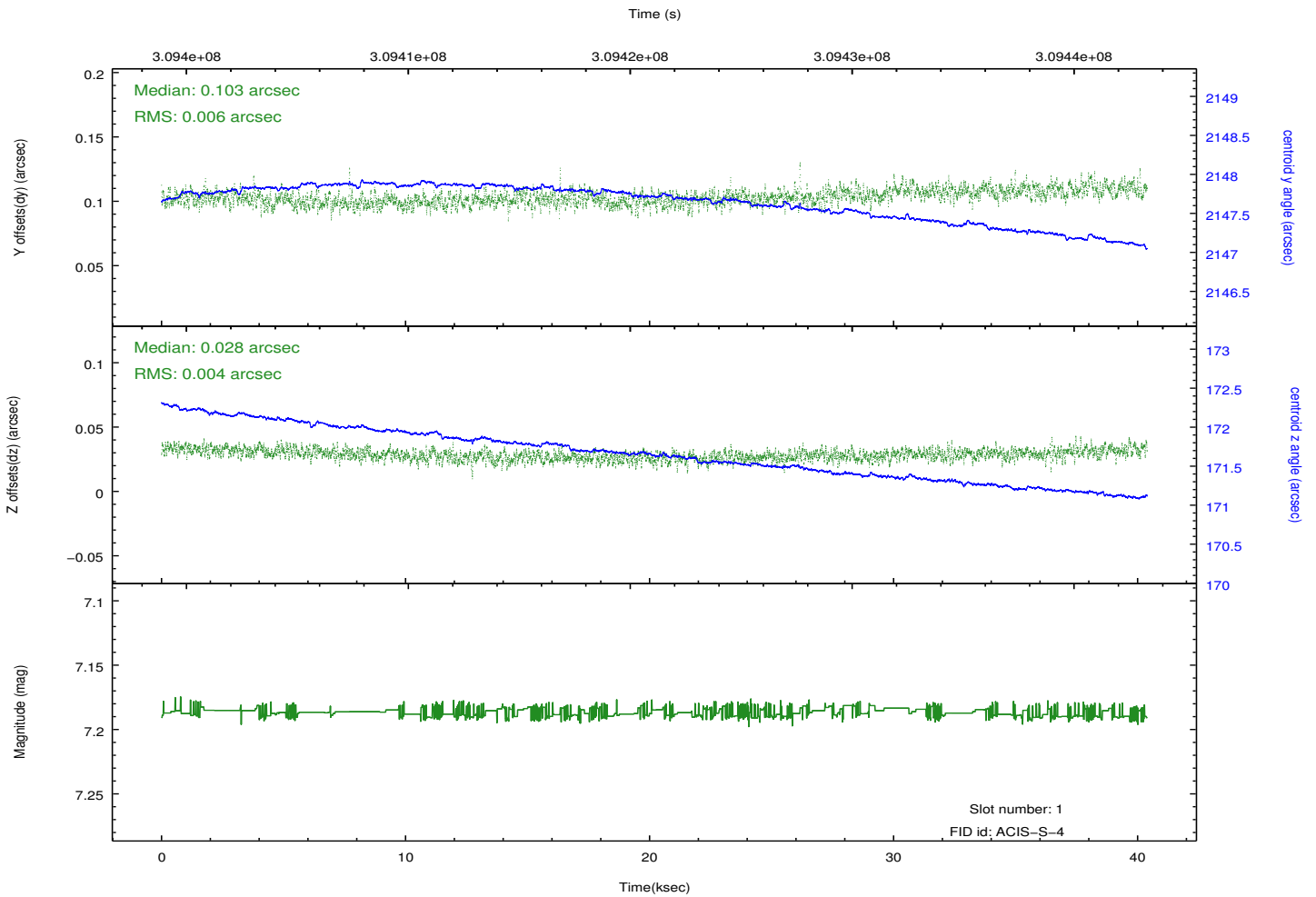
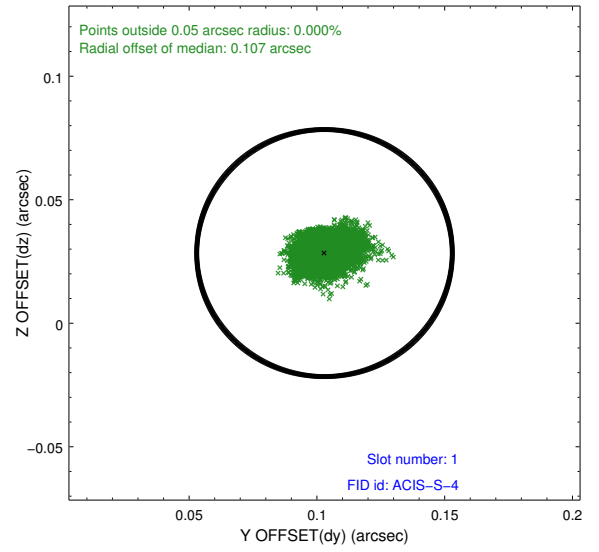
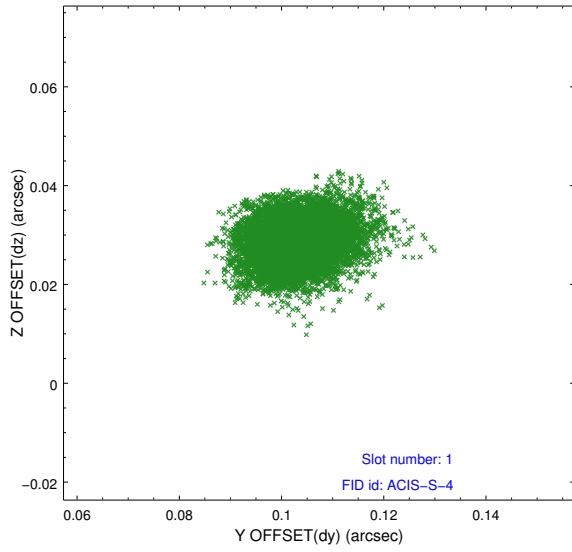


## 2.5 FID Slots

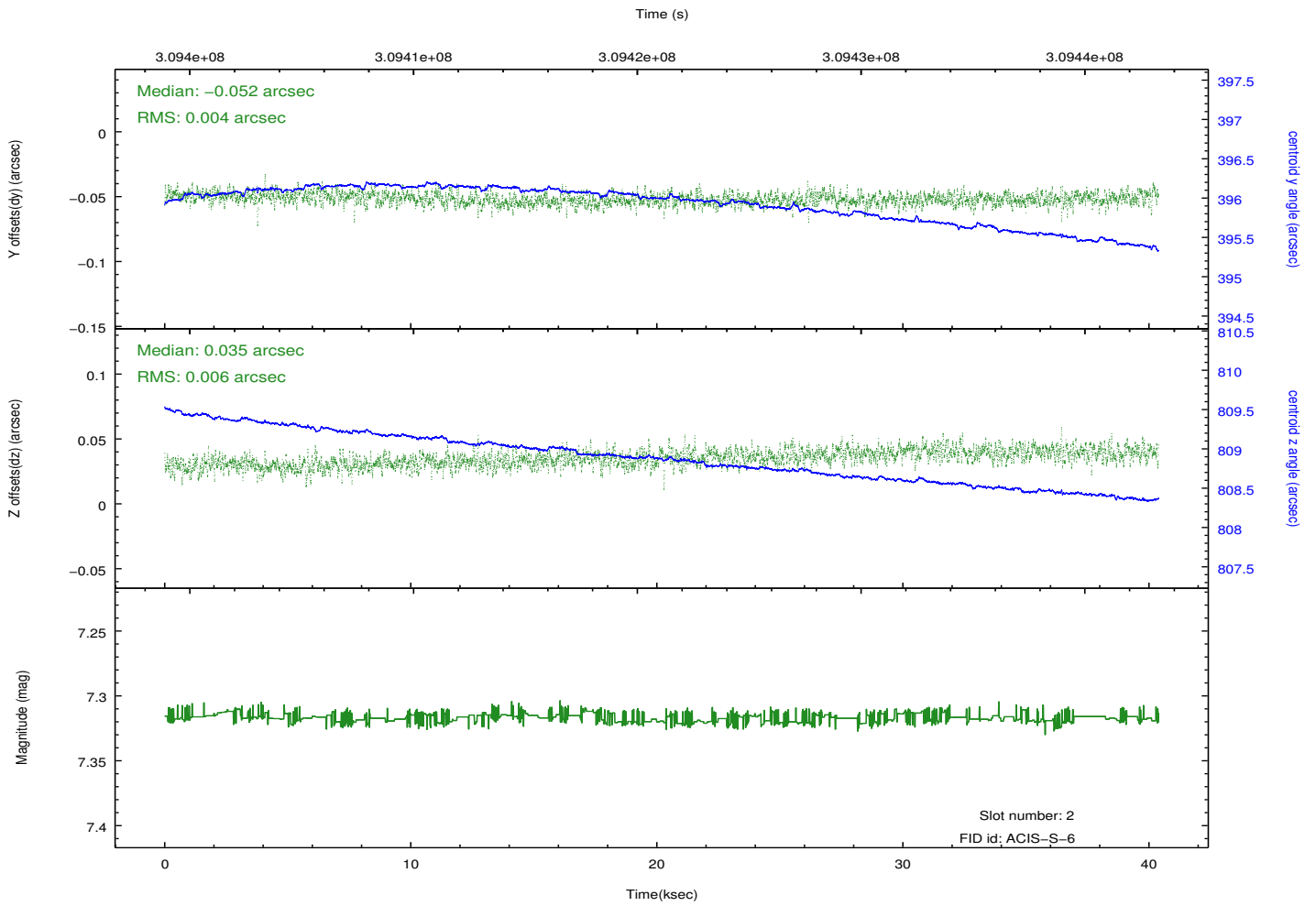
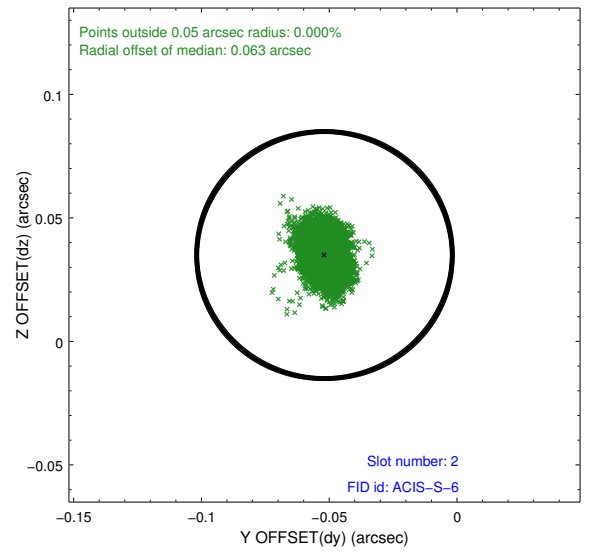
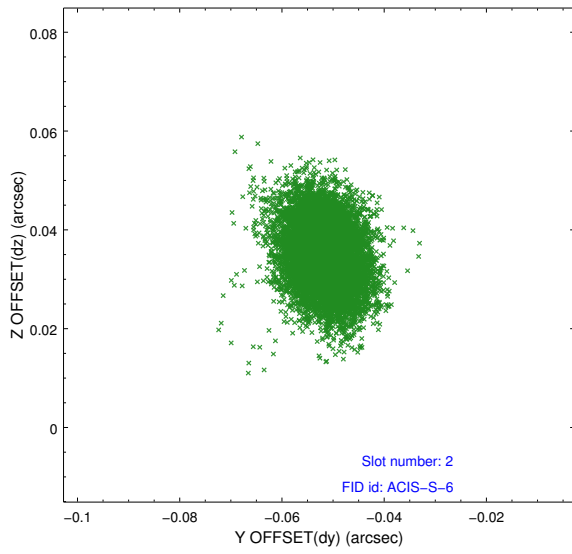
### 2.5.1 Slot 0



## 2.5.2 Slot 1



### 2.5.3 Slot 2



# A Summary

## A.1 Status

V&V Scientist	Joy Nichols
V&V Date (YYYY-MM-DD)	2012.05.08
V&V Edition	1
V&V Disposition and Status	OK
V&V Charge Time	40.0765

## A.2 Comments

source is visible near sky  $(x,y) = (4116, 4209)$