

V&V Reference Report

L2 ASCDS Version : 8.4.4

Observation 7902 - L2 Version 2
Chandra X-Ray Center

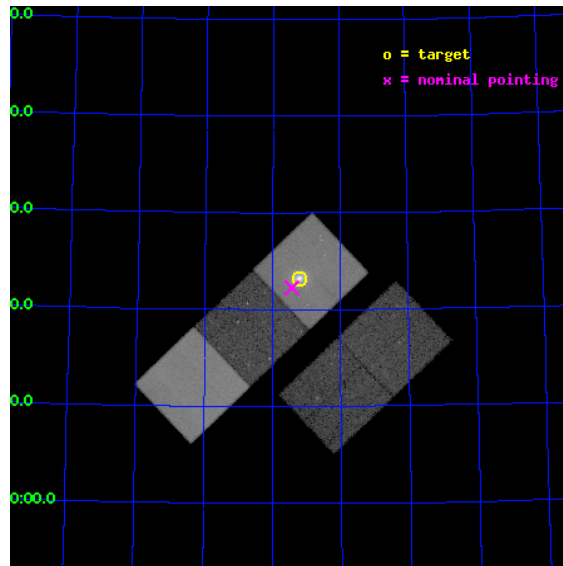
L2 Processing Date : Apr 27 2012

Contents

1	Front	2
2	OBI	3
2.1	OBI	3
2.1.1	Images	3
2.1.2	Bias	3
2.1.3	Parameters	4
2.1.4	Events	4
2.2	Compared Parameters	5
2.3	Aspect	6
2.4	Star Slots	9
2.4.1	Slot 3	9
2.4.2	Slot 4	10
2.4.3	Slot 5	11
2.4.4	Slot 6	12
2.4.5	Slot 7	13
2.5	FID Slots	14
2.5.1	Slot 0	14
2.5.2	Slot 1	15
2.5.3	Slot 2	16
A	Summary	17
A.1	Status	17
A.2	Comments	17

1 Front

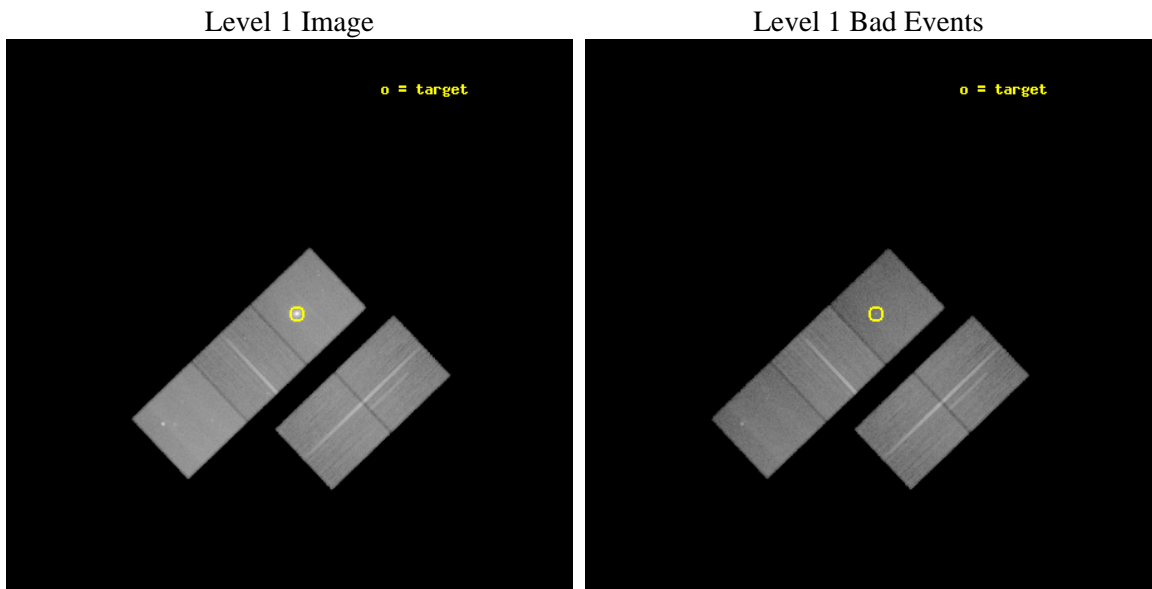
seq_num	800620	Sequence number
obs_id	7902	Observation id
title	AGN Feedback and Galaxy Formation in Cluster Cores	Proposal title
observer	Prof. Brian McNamara	Principal investigator
object	RBS 797	Source name
dtycycle	0	
cycle	P	events from which exps? Prim/Second/Both
ra_targ	146.8	Observer's specified target RA [deg]
dec_targ	76.386667	Observer's specified target Dec [deg]
ra_nom	146.85907636348	Nominal RA [deg]
dec_nom	76.371133096359	Nominal Dec [deg]
roll_nom	316.3997538877	Nominal Roll [deg]
revision	2	Processing version of data
ontime	38808.900298476	Sum of GTIs [s]
liveltime	38301.83344538	Livetime [s]
ontime2	38796.336407065	Sum of GTIs [s]
ontime3	38805.75933814	Sum of GTIs [s]
ontime5	38808.900298476	Sum of GTIs [s]
ontime6	38802.618377805	Sum of GTIs [s]
ontime7	38808.900298476	Sum of GTIs [s]
l2events	487703	Number of level 2 events



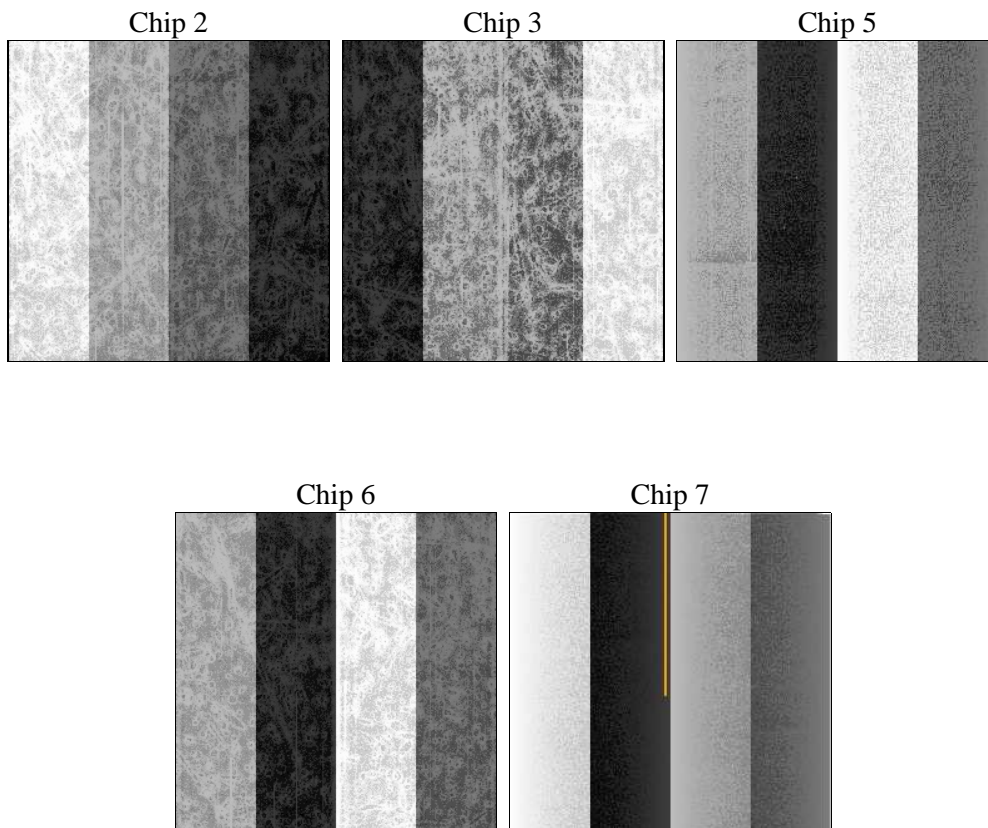
2 OBI

2.1 OBI

2.1.1 Images



2.1.2 Bias



2.1.3 Parameters

obi_num	0	Obi number	sched_exp_time	38671.000000	[s] Scheduled observation exposure time
ascdsver	8.4.4	Processing system revision	ontime	38808.900298476	Sum of GTIs [s]
caldbver	4.4.9	 	ontime2	38796.336407065	Sum of GTIs [s]
date	2012-04-27T15:22:56	Date and time of file creation	ontime3	38805.75933814	Sum of GTIs [s]
revision	2	Processing version of data	ontime5	38808.900298476	Sum of GTIs [s]
			ontime6	38802.618377805	Sum of GTIs [s]
			ontime7	38808.900298476	Sum of GTIs [s]
			l1events	1832080	Number of level 1 events

2.1.4 Events

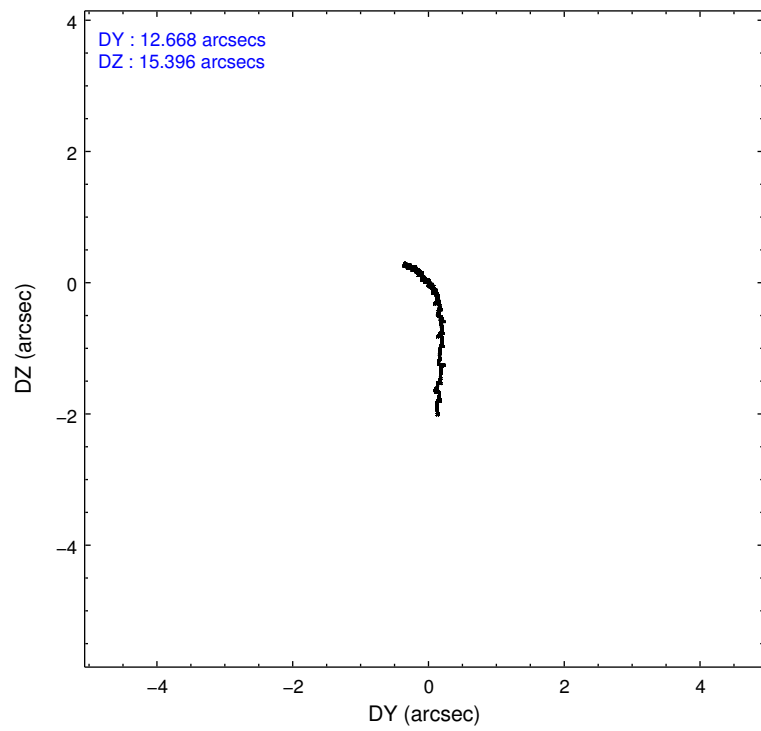
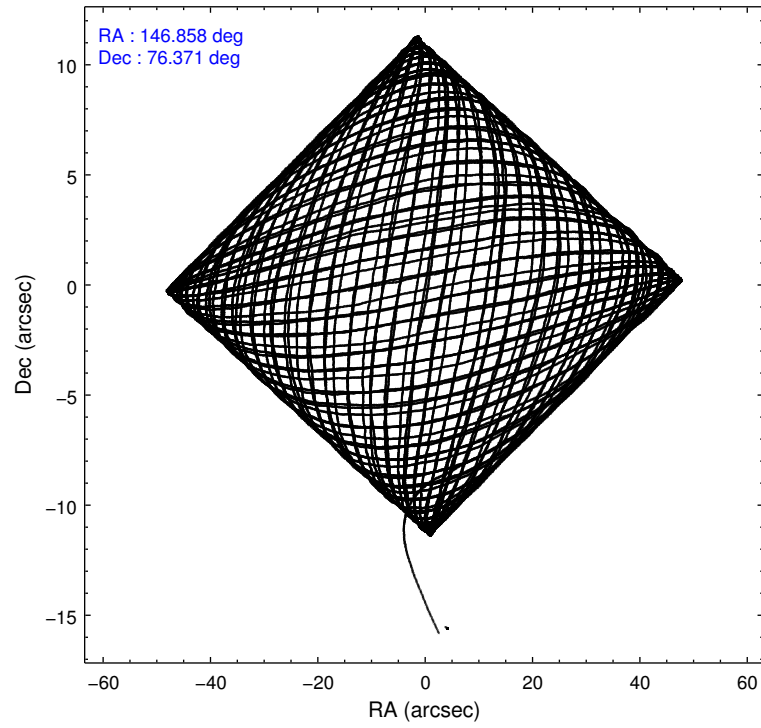
	ccd 2	ccd 3	ccd 5	ccd 6	ccd 7
level 1 events	335290	318960	437574	332828	407428
rejected events	304851	289748	225929	299327	197899
rejected %	90%	90%	51%	89%	48%

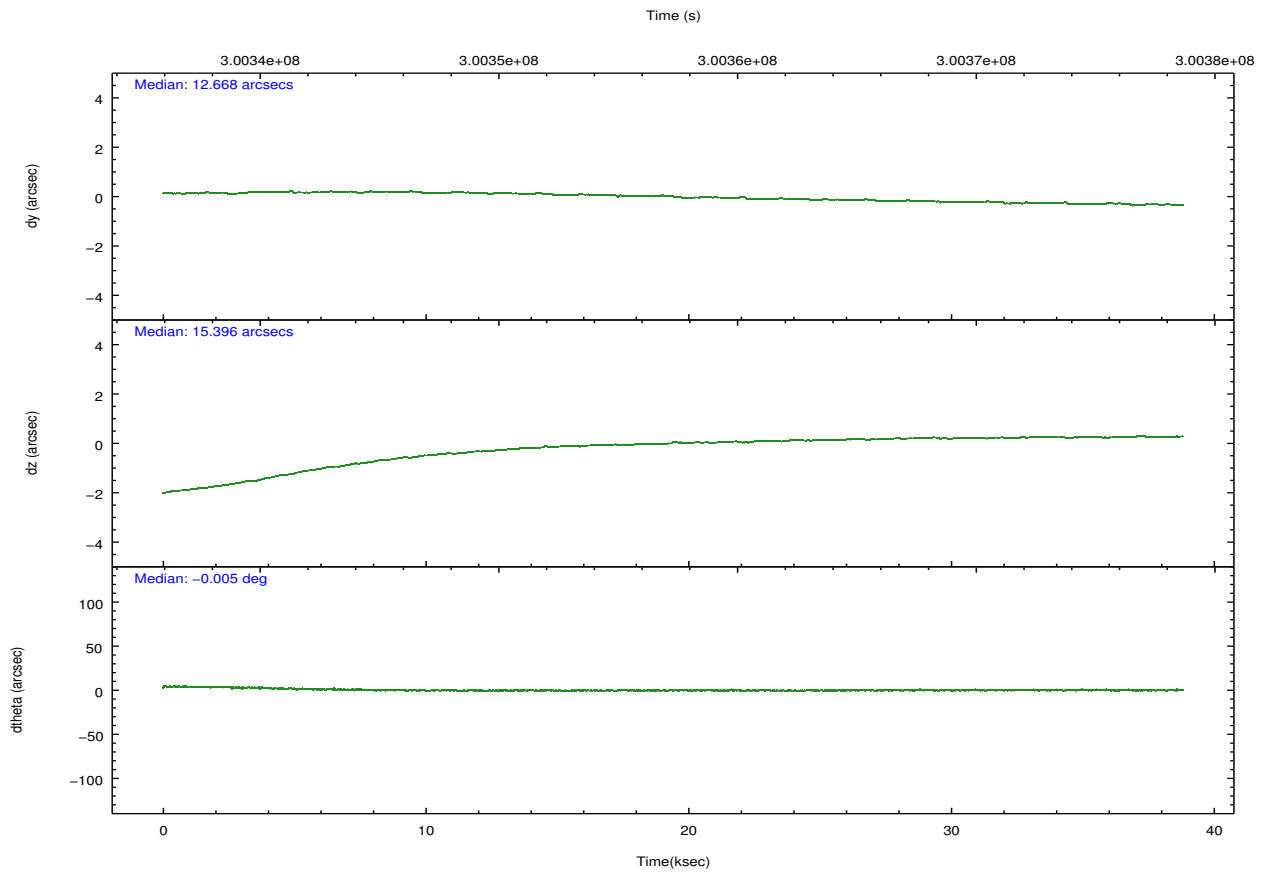
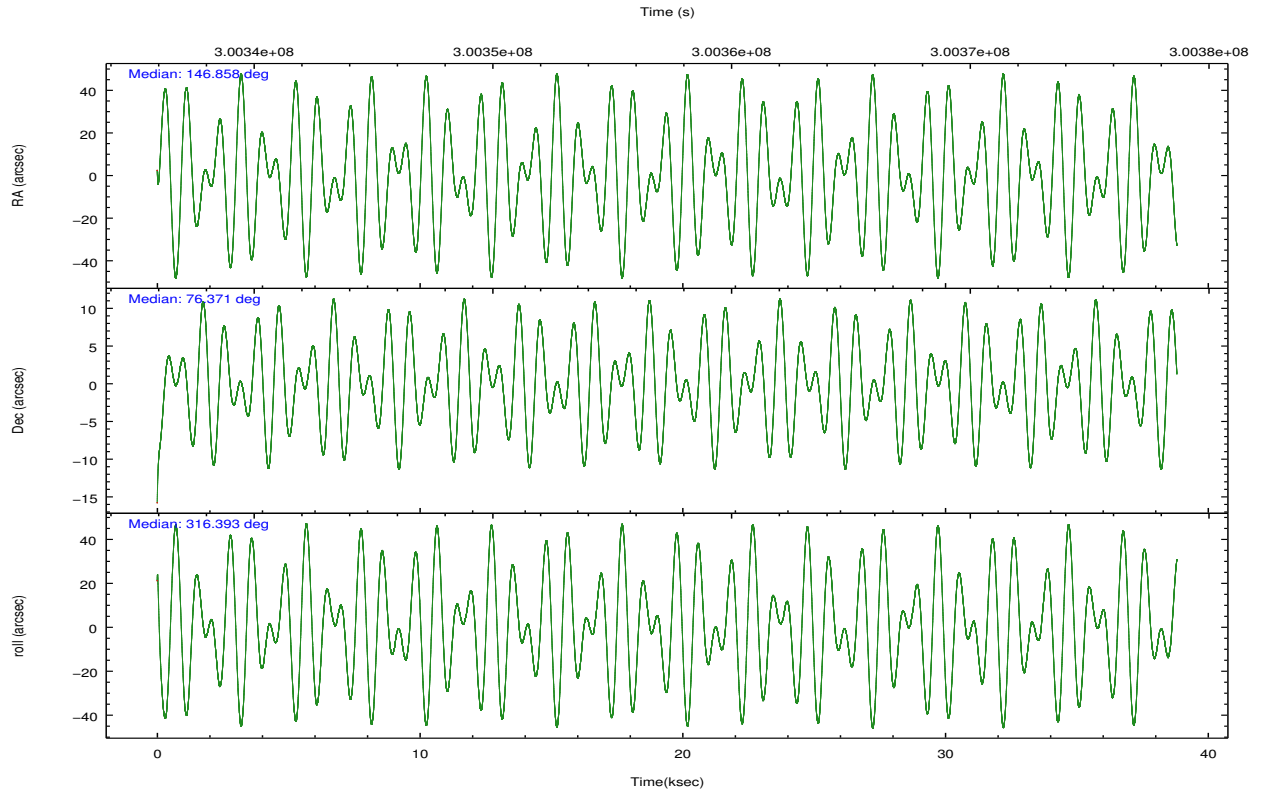
	ccd 2	ccd 3	ccd 5	ccd 6	ccd 7
grade 0 events	11094	10331	17590	12041	30503
	3%	3%	4%	3%	7%
grade 1 events	183	178	1526	161	474
	0%	0%	0%	0%	0%
grade 2 events	7319	6526	64414	7359	45800
	2%	2%	14%	2%	11%
grade 3 events	3421	3451	9363	3732	20783
	1%	1%	2%	1%	5%
grade 4 events	3364	3378	9023	3679	20526
	1%	1%	2%	1%	5%
grade 5 events	10205	12843	35309	12937	37790
	3%	4%	8%	3%	9%
grade 6 events	5659	5874	114420	7114	94220
	1%	1%	26%	2%	23%
grade 7 events	294045	276379	185929	285805	157332
	87%	86%	42%	85%	38%

2.2 Compared Parameters

Parameter	Planned	Actual	Parameter	Planned	Actual
Instrument	ACIS	ACIS	Obspar format version number	7	7
Detector	ACIS-23567	ACIS-23567	Obspar file type	PREDICTED	ACTUAL
Grating	NONE	NONE	Obspar update status	NONE	UPDATED
Data mode	VFAINT	VFAINT	CCD I0 on	N	N
Observation mode	POINTING	POINTING	CCD I1 on	N	N
[deg] Pointing RA	146.745890	146.8590763634803	CCD I2 on	O1	Y
[deg] Pointing Dec	76.377179	76.37113309635855	CCD I3 on	Y	Y
[deg] Pointing Roll	316.353116	316.3997538877022	CCD S0 on	N	N
[mm] SIM focus pos	-0.684267	-0.6828225247311905	CCD S1 on	Y	Y
[mm] SIM defocus	0	0.001444936568705701	CCD S2 on	Y	Y
[mm] SIM translation stage pos	-190.132523	-190.1400660498719	CCD S3 on	Y	Y
[mm] SIM translation stage offset	0	0.00754346686406393	CCD S4 on	N	N
[s] Observation start time (MET)	300338023.184000	300336792.5709	CCD S5 on	N	N
Observation start date	2007-07-09T03:12:38	2007-07-09T02:53:12	Number of optional ACIS chips dropped	0	0
[s] Observation end time (MET)	300376694.184000	300377623.44786	On-chip summing requested	N	N
Observation end date	2007-07-09T13:57:09	2007-07-09T14:13:43	Subarray requested	NONE	NONE
Read mode	TIMED	TIMED	Alternating exposures requested	N	N
			[s] Primary exposure time	0.000000	3.1

2.3 Aspect



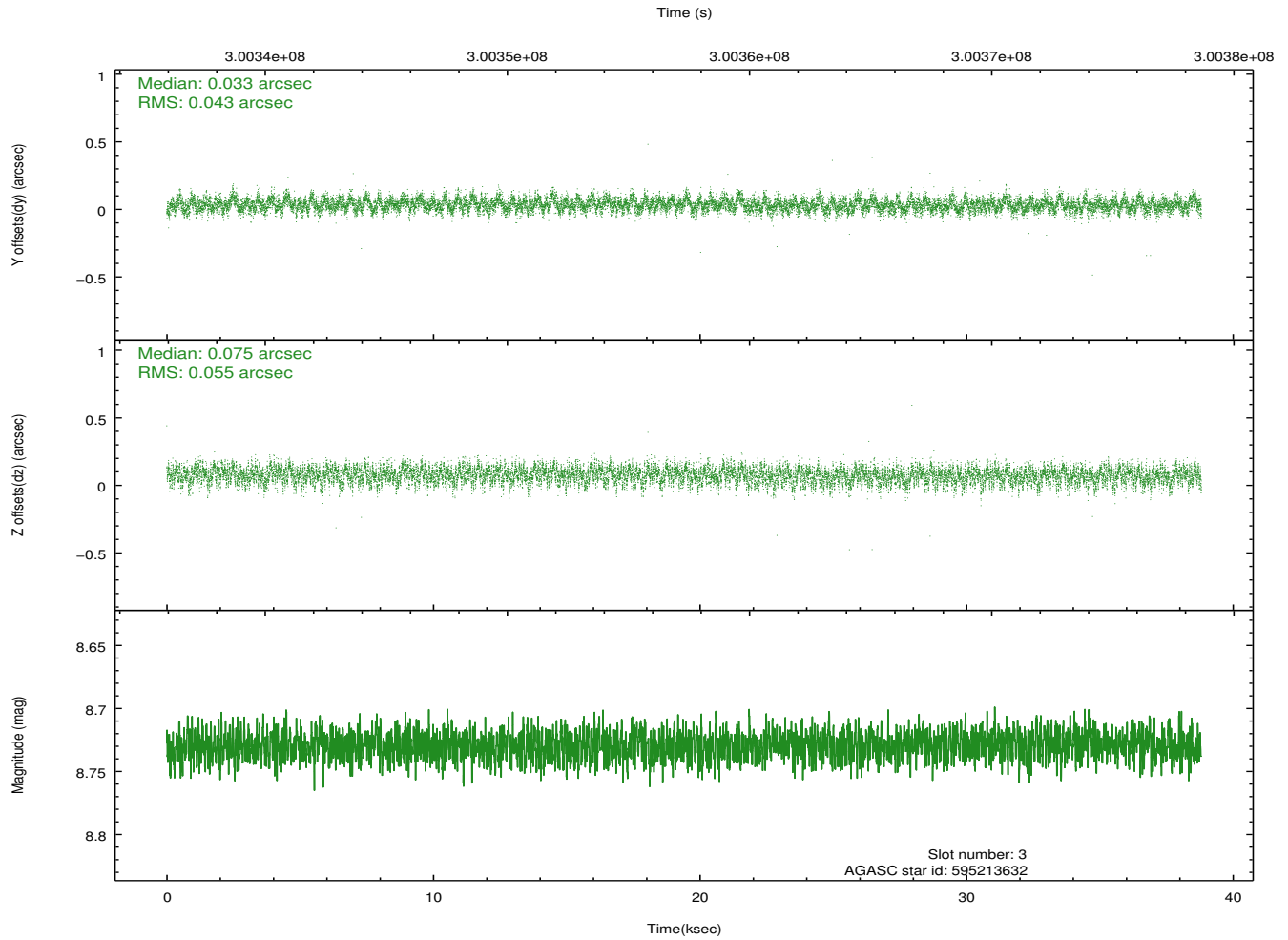
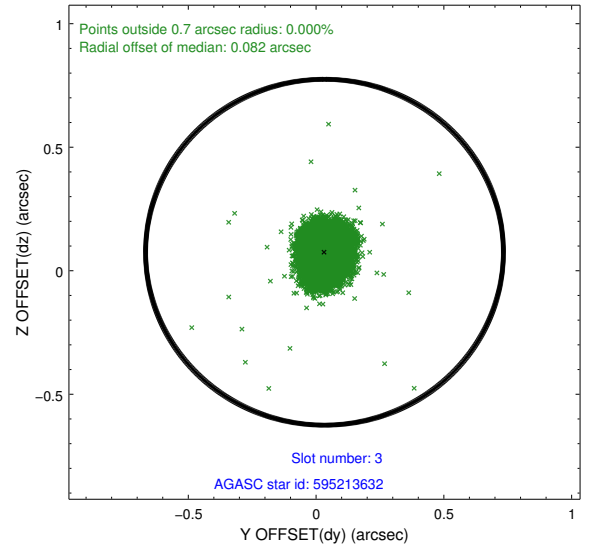
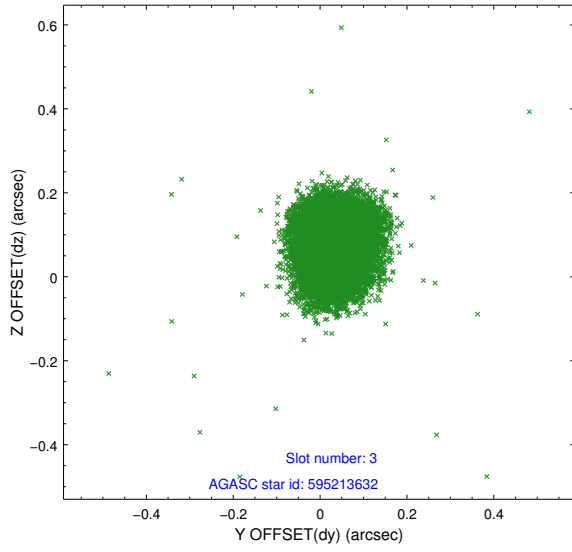


Slot Statistics

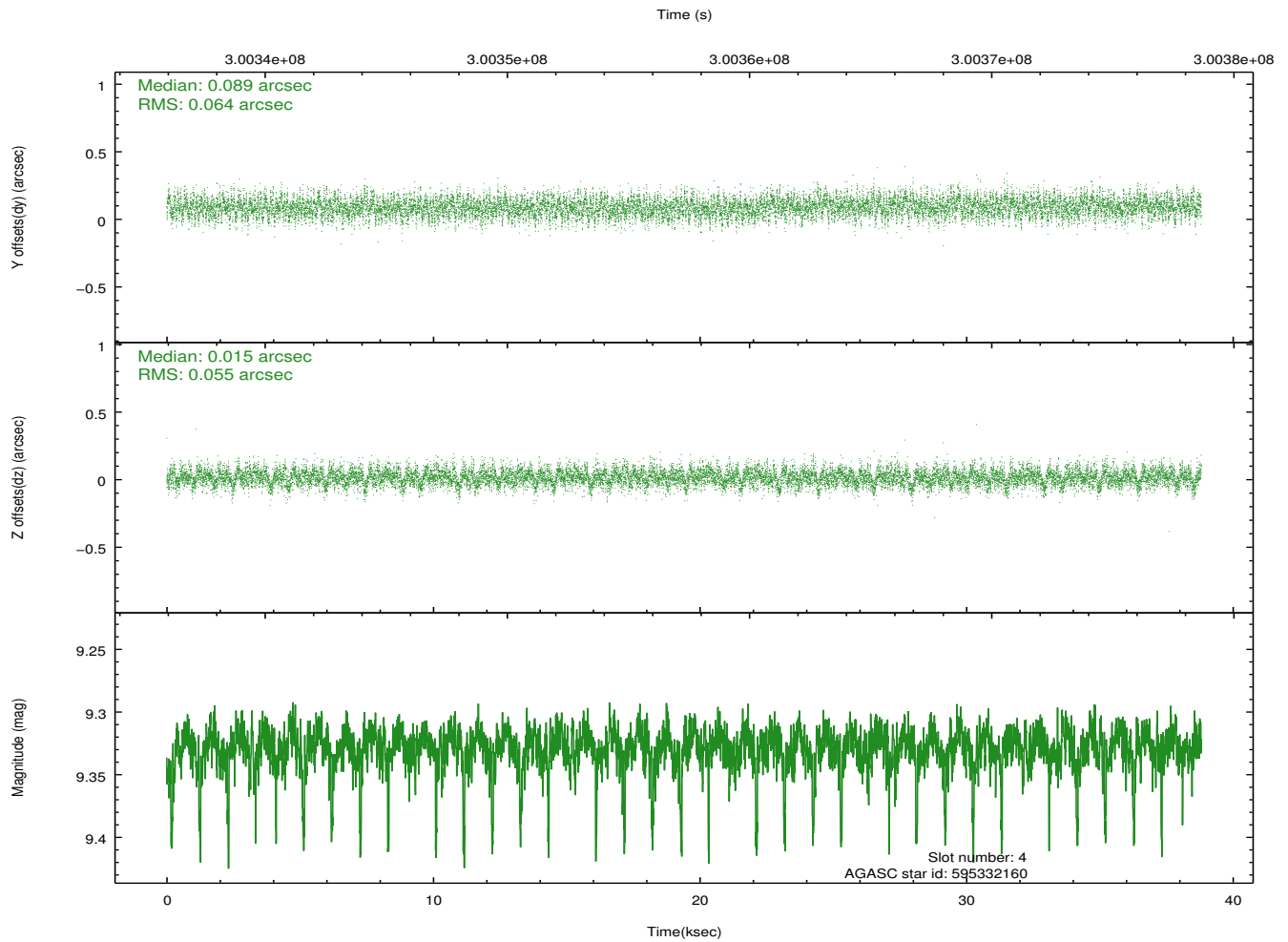
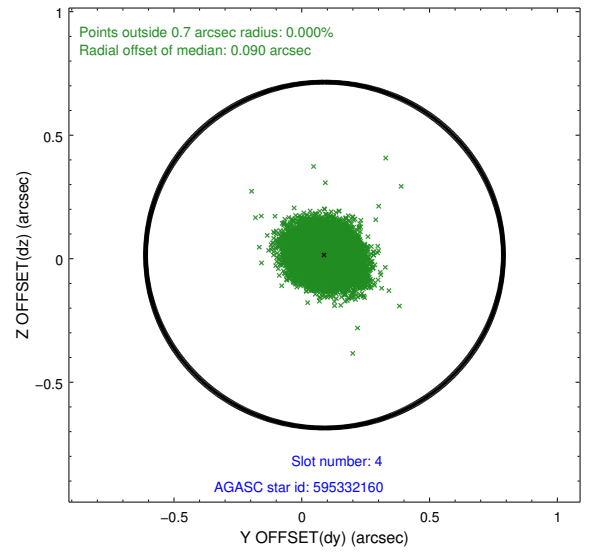
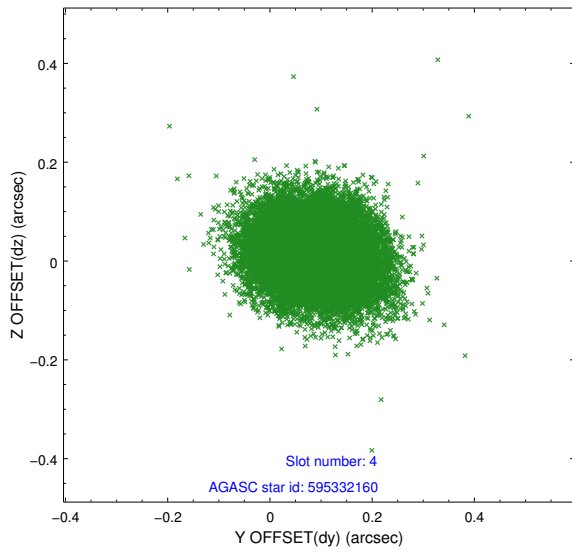
slot	status	id	mag	n_pts	med_dy	med_dz	dr1	dr2	ra	dec	mean_y	mean_z
0	FID	ACIS-S-2	7.09	9467	-0.050	-0.032	0.011	0.033	0.000000	0.000000	-765.57	-1736.55
1	FID	ACIS-S-4	7.19	9468	0.164	0.033	0.009	0.016	0.000000	0.000000	2147.88	172.01
2	FID	ACIS-S-5	7.22	9468	-0.146	0.007	0.011	0.031	0.000000	0.000000	-1818.51	165.63
3	GUIDE	595213632	8.73	18924	0.033	0.075	0.074	0.119	145.004420	76.223947	-713.89	-1413.34
4	GUIDE	595332160	9.33	18922	0.089	0.015	0.090	0.144	147.471437	75.708792	2125.06	-1293.11
5	GUIDE	595338784	8.98	18911	-0.055	-0.122	0.070	0.114	149.121836	76.143884	2033.53	835.41
6	GUIDE	595340032	7.93	18934	-0.034	-0.116	0.046	0.078	146.841484	77.087012	-1707.96	1902.20
7	GUIDE	595219792	8.62	18925	-0.034	0.153	0.068	0.111	144.357438	76.131348	-908.42	-2031.97

2.4 Star Slots

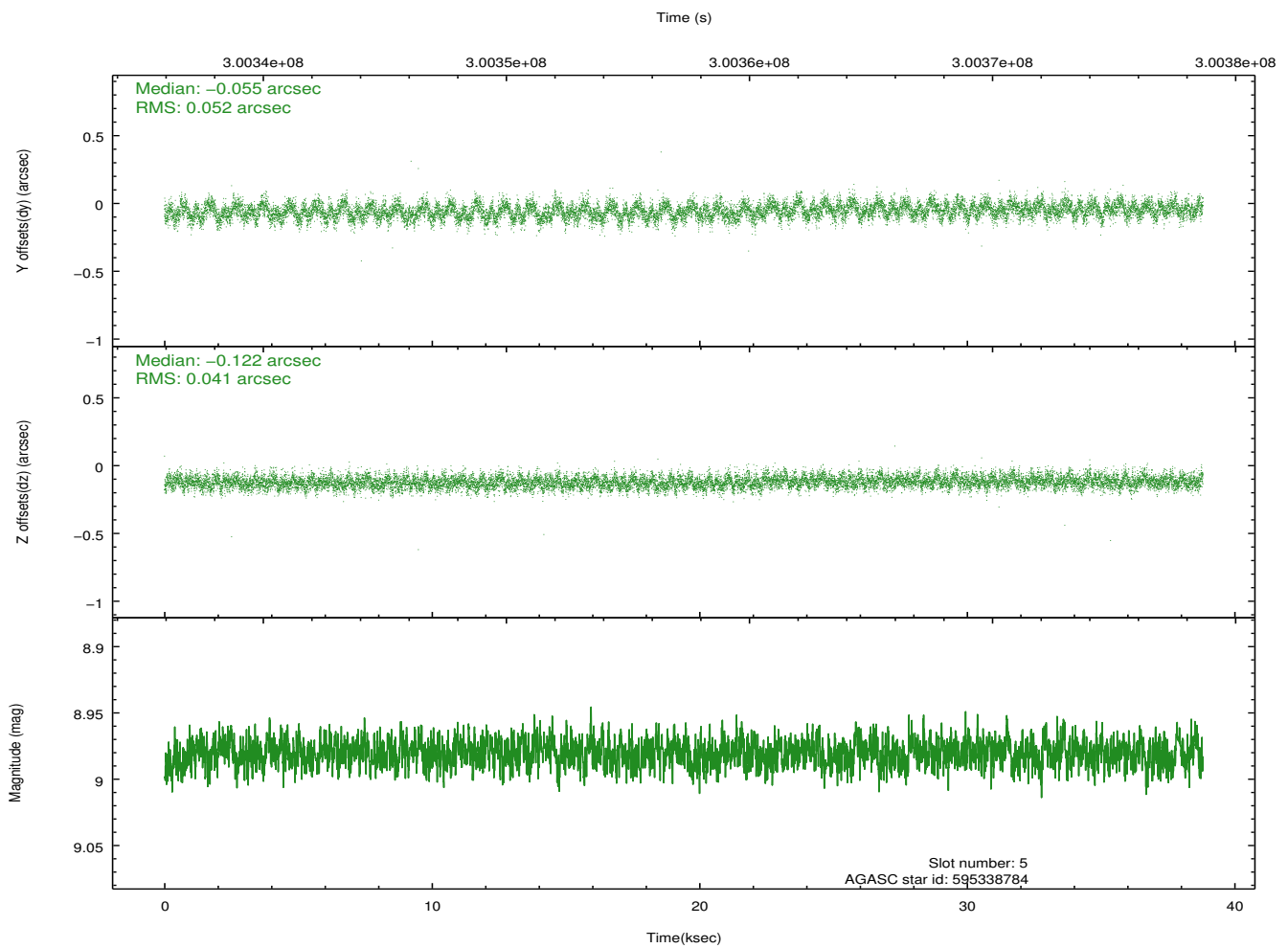
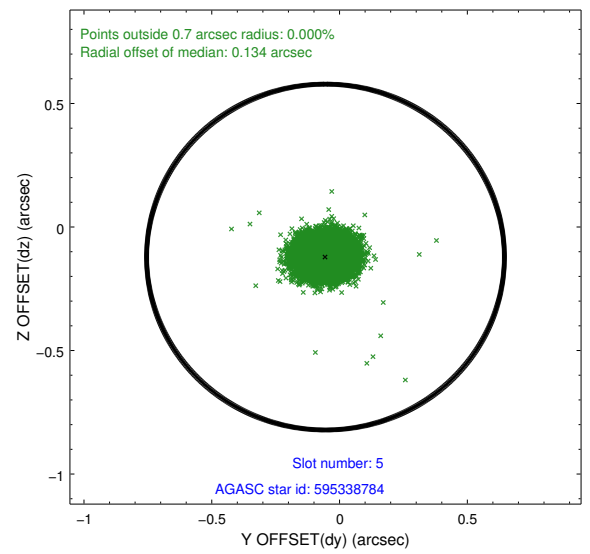
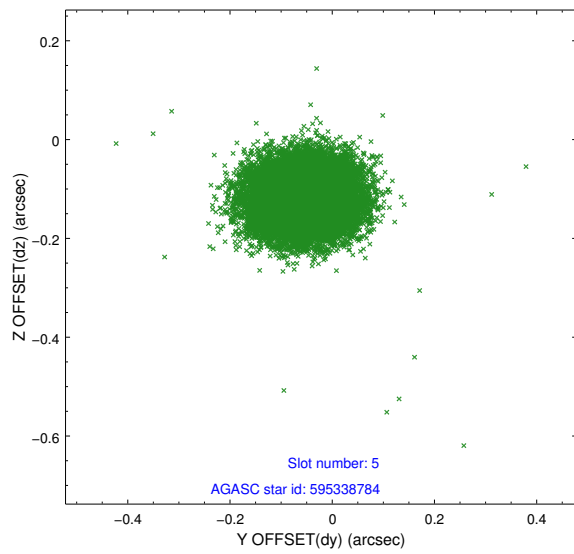
2.4.1 Slot 3



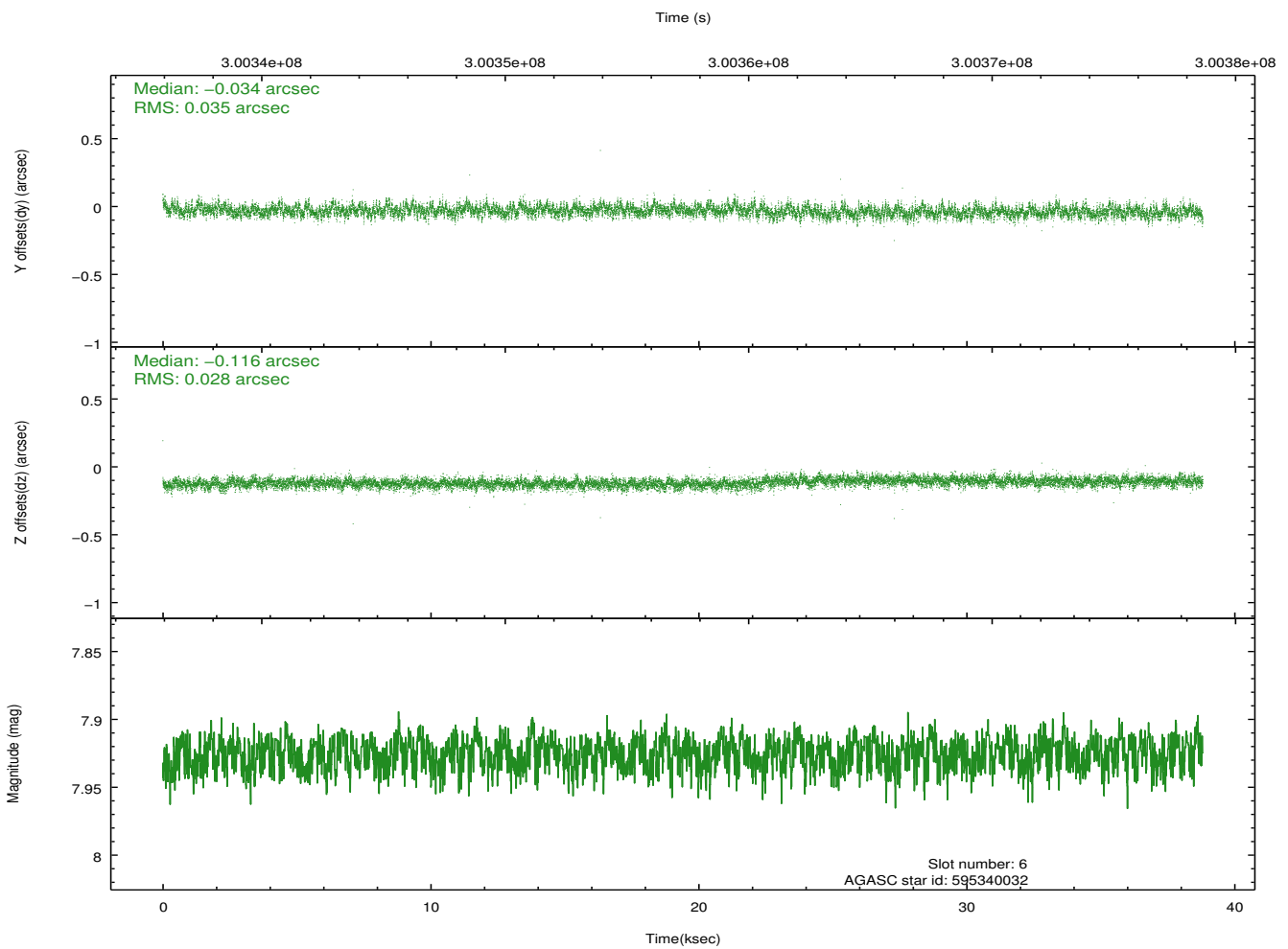
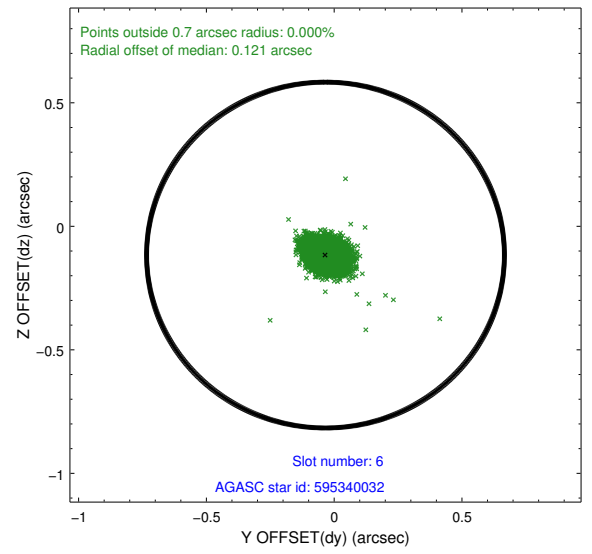
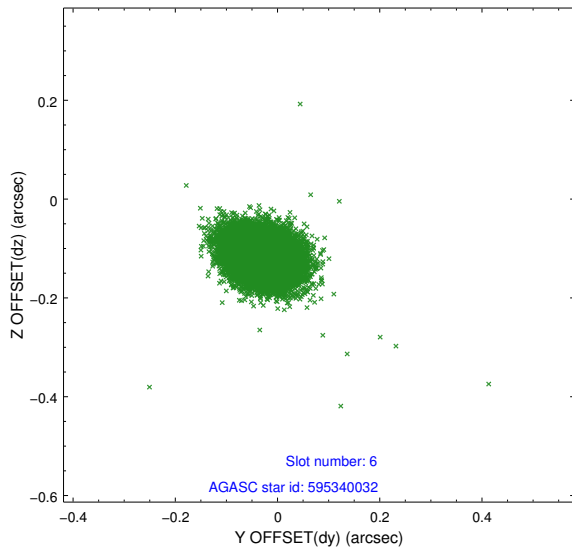
2.4.2 Slot 4



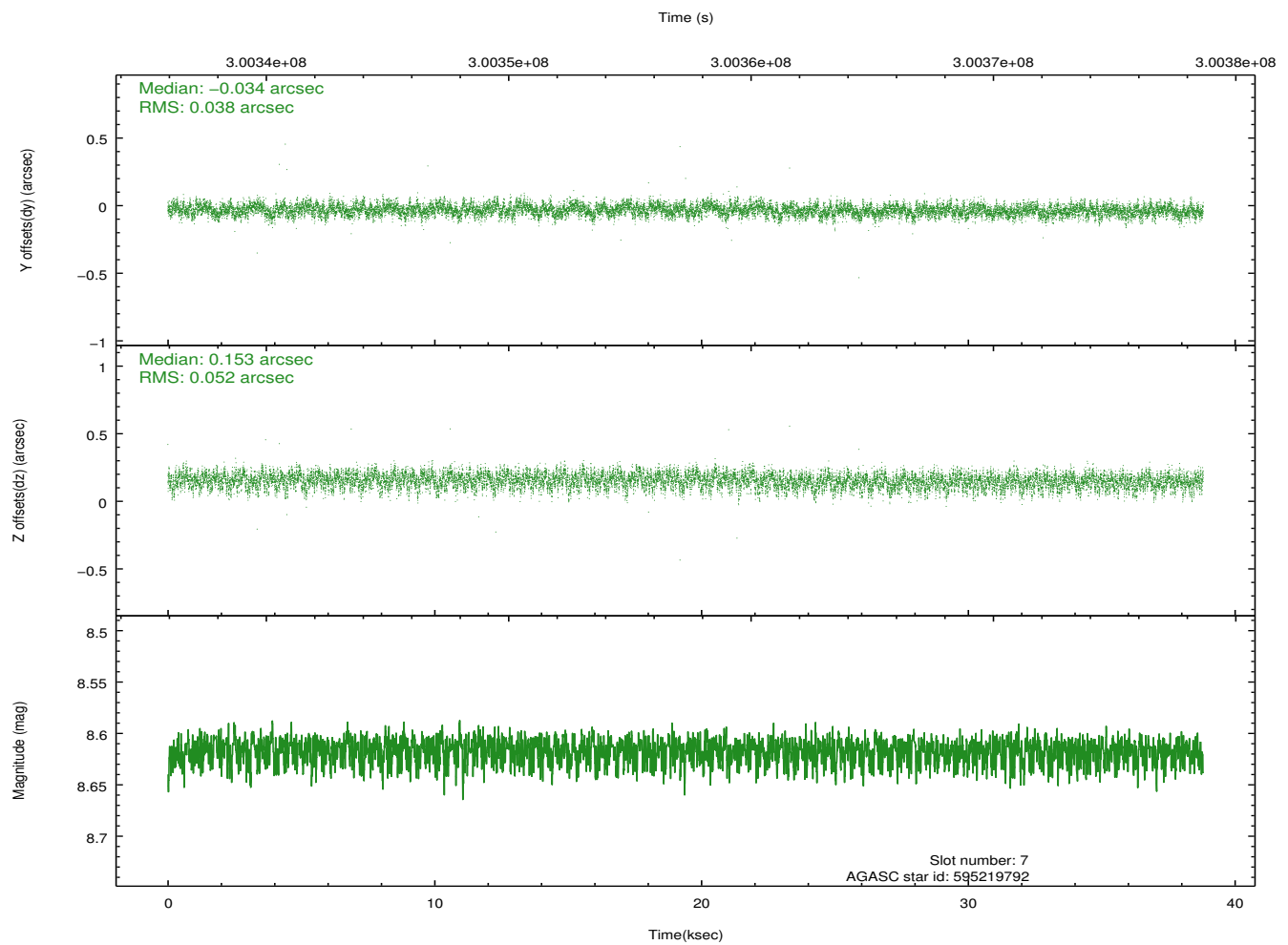
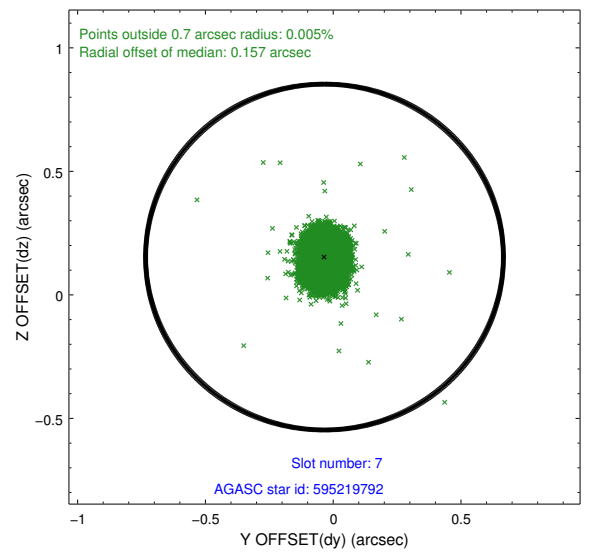
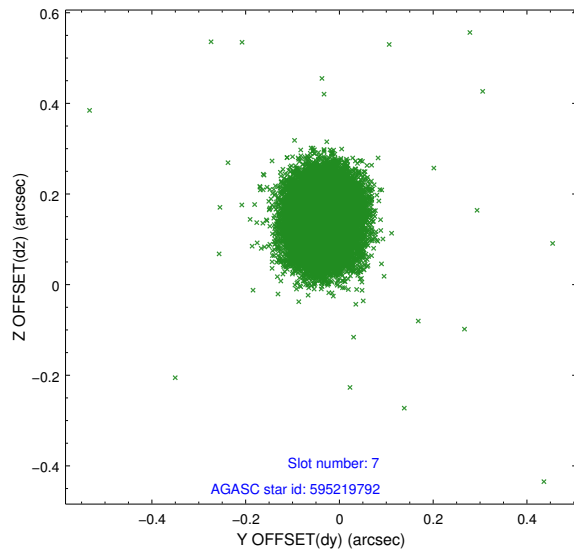
2.4.3 Slot 5



2.4.4 Slot 6

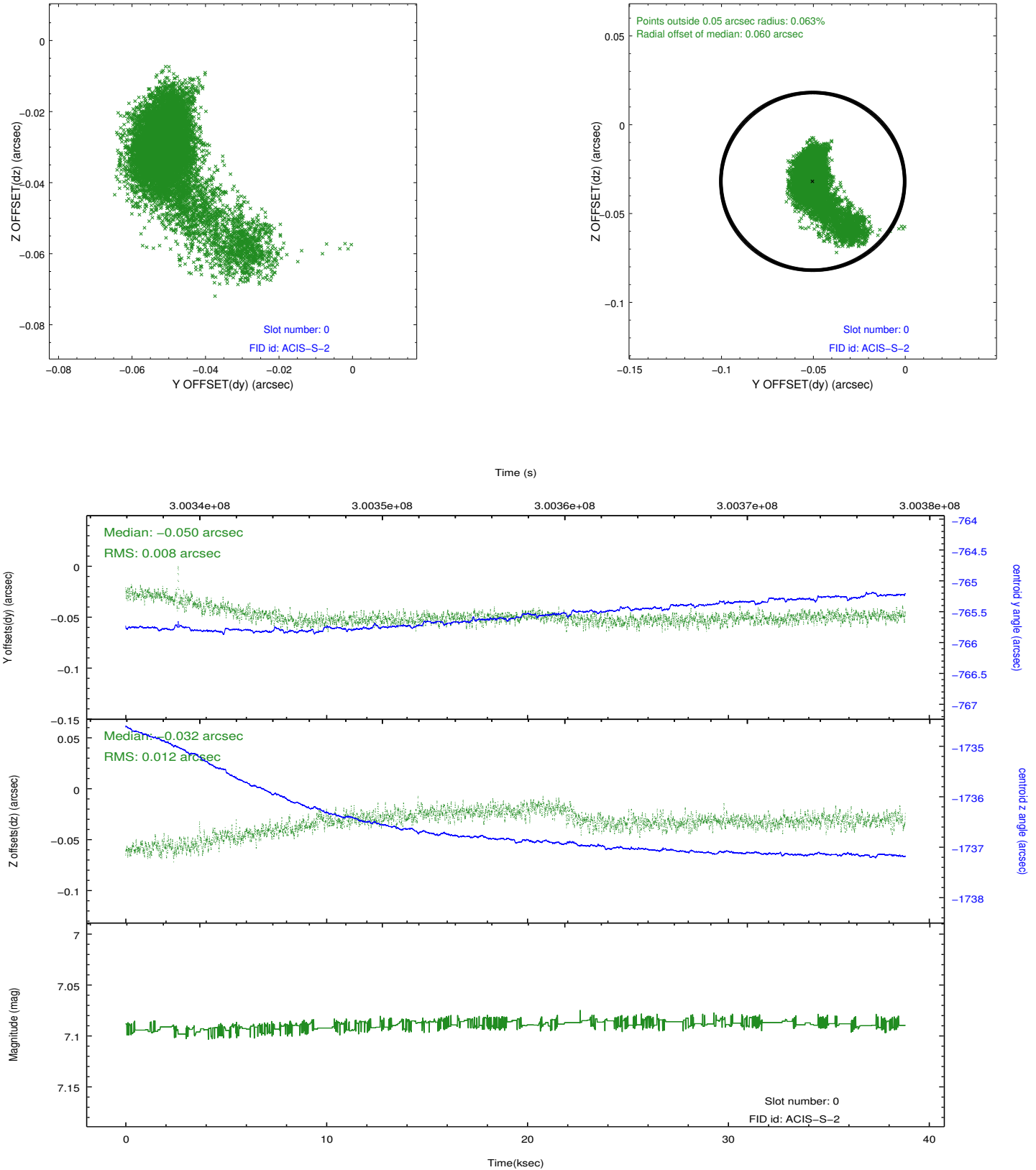


2.4.5 Slot 7

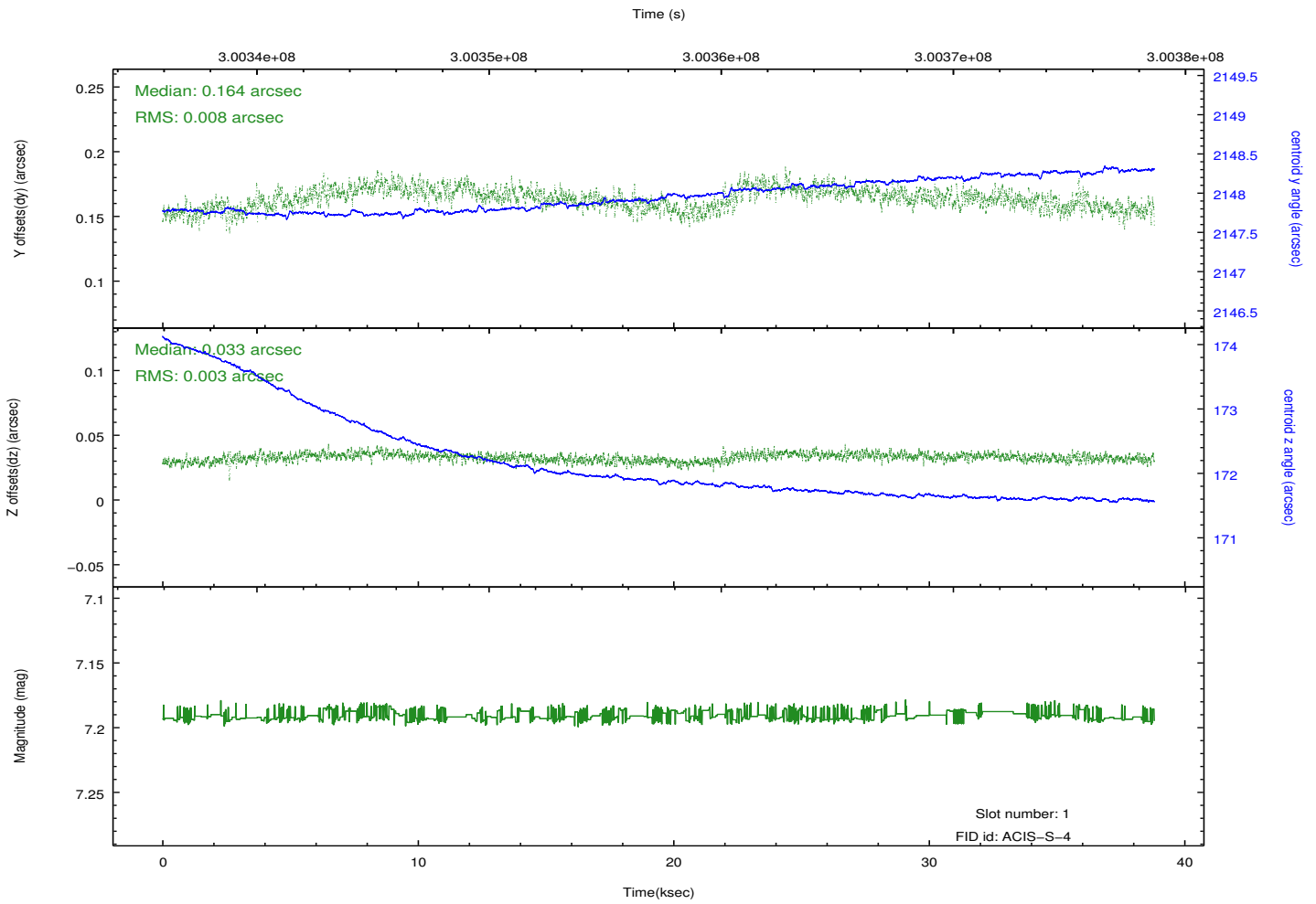
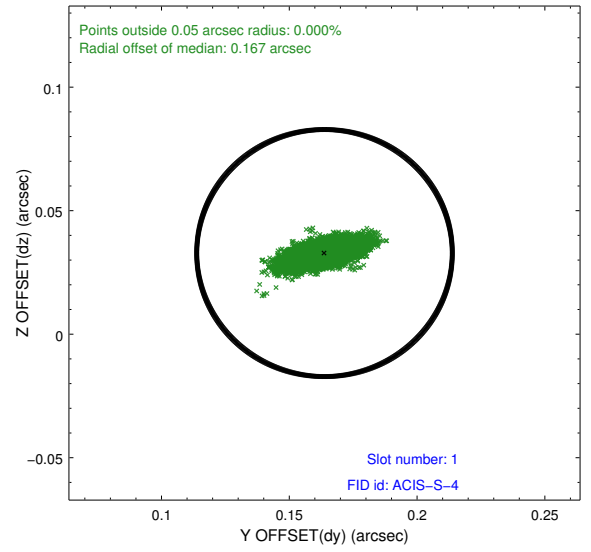
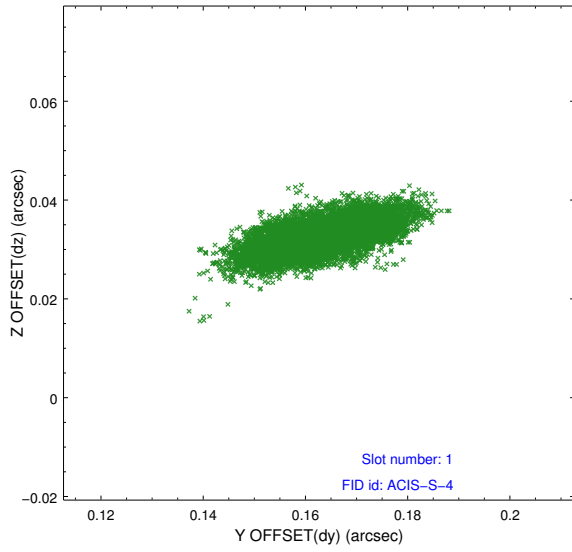


2.5 FID Slots

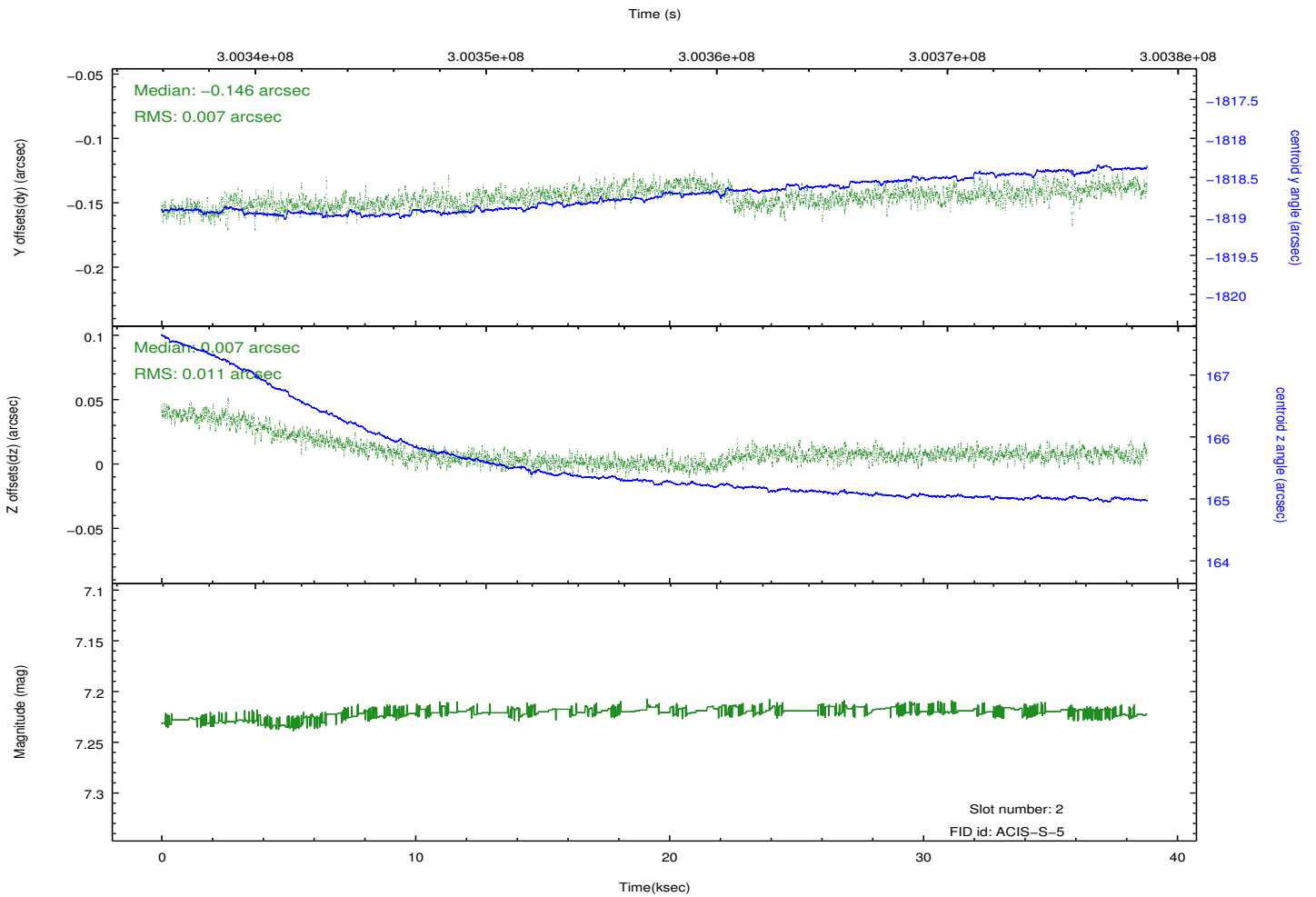
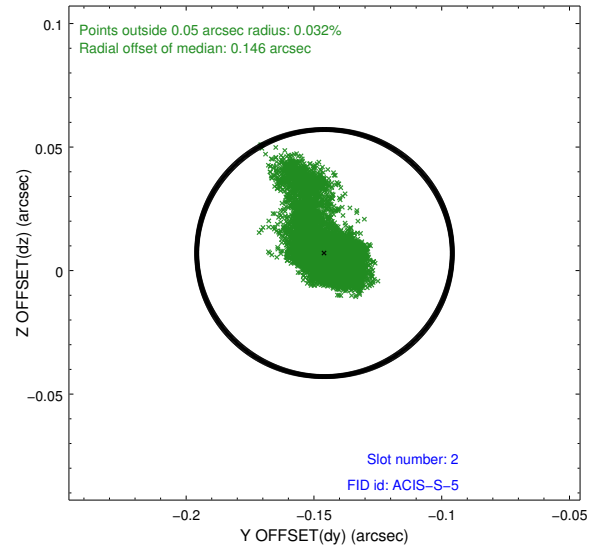
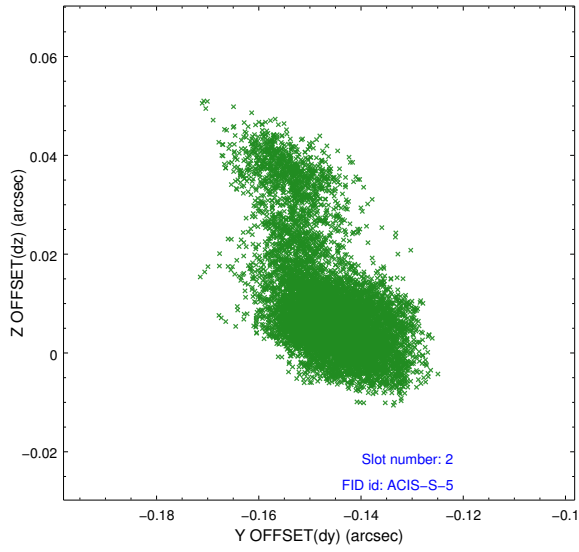
2.5.1 Slot 0



2.5.2 Slot 1



2.5.3 Slot 2



A Summary

A.1 Status

V&V Scientist	Jen Lauer
V&V Date (YYYY-MM-DD)	2012.04.30
V&V Edition	1
V&V Disposition and Status	OK
V&V Charge Time	38.8089002

A.2 Comments