

V&V Reference Report

L2 ASCDS Version : 8.4.4

Observation 7944 - L2 Version 3
Chandra X-Ray Center

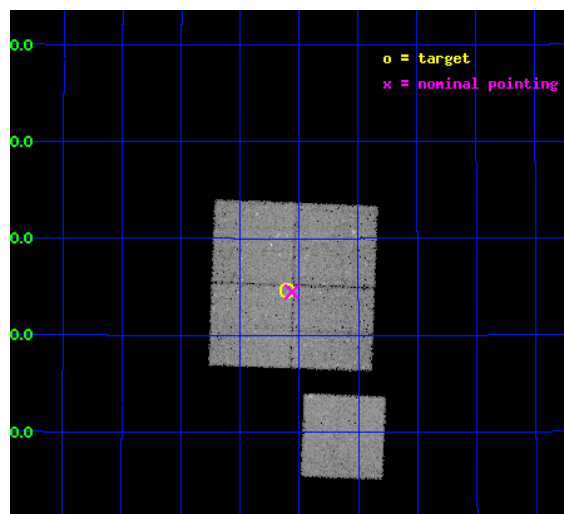
L2 Processing Date : Apr 24 2012

Contents

1	Front	2
2	OBI	3
2.1	OBI	3
2.1.1	Images	3
2.1.2	Bias	3
2.1.3	Parameters	4
2.1.4	Events	4
2.2	Compared Parameters	5
2.3	Aspect	6
2.4	Star Slots	9
2.4.1	Slot 3	9
2.4.2	Slot 4	10
2.4.3	Slot 5	11
2.4.4	Slot 6	12
2.4.5	Slot 7	13
2.5	FID Slots	14
2.5.1	Slot 0	14
2.5.2	Slot 1	15
2.5.3	Slot 2	16
A	Summary	17
A.1	Status	17
A.2	Comments	17

1 Front

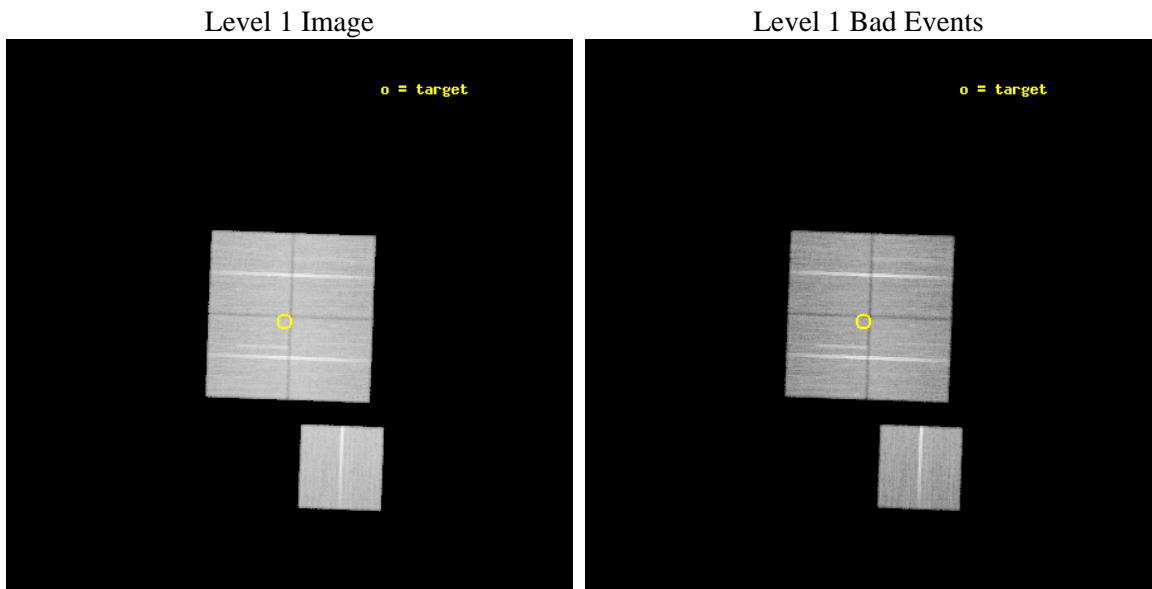
seq_num	900488	Sequence number
obs_id	7944	Observation id
title	Chandra Large Scale Survey of the NOAO Bootes Deep Field (A)	Propo
observer	Dr. Stephen Murray	Principal investigator
object	Bootes3 3	Source name
dtycle	0	
cycle	P	events from which exps? Prim/Second/Both
ra_targ	217.02479	Observer's specified target RA [deg]
dec_targ	34.410921	Observer's specified target Dec [deg]
ra_nom	217.0155483636	Nominal RA [deg]
dec_nom	34.408228067155	Nominal Dec [deg]
roll_nom	182.12141041895	Nominal Roll [deg]
revision	3	Processing version of data
ontime	40938.559314609	Sum of GTIs [s]
livetime	40403.666898634	Livetime [s]
ontime0	40935.418334365	Sum of GTIs [s]
ontime1	40938.559334517	Sum of GTIs [s]
ontime2	40935.418354213	Sum of GTIs [s]
ontime3	40938.559314609	Sum of GTIs [s]
ontime6	40941.700314879	Sum of GTIs [s]
l2events	121822	Number of level 2 events



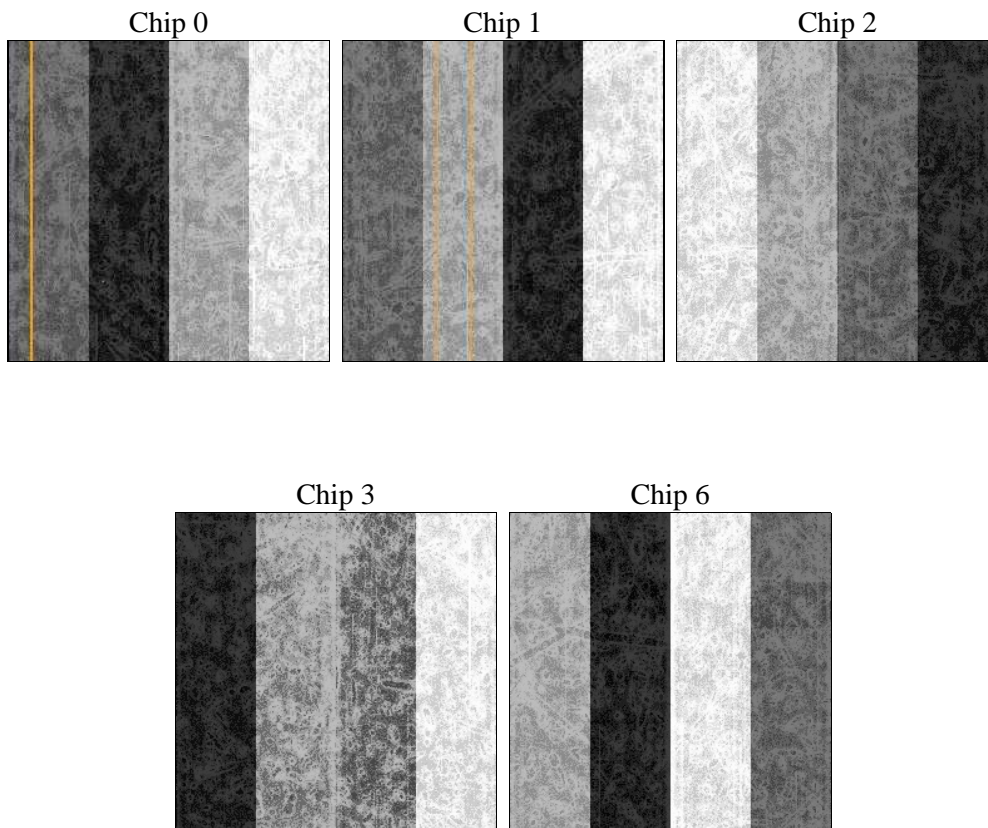
2 OBI

2.1 OBI

2.1.1 Images



2.1.2 Bias



2.1.3 Parameters

obi_num	1	Obi number	sched_exp_time	40805.316000	[s] Scheduled observation exposure time
ascdsver	8.4.4	Processing system revision	ontime	40938.559314609	Sum of GTIs [s]
caldbver	4.4.9	 	ontime0	40935.418334365	Sum of GTIs [s]
date	2012-04-24T09:41:38	Date and time of file creation	ontime1	40938.559334517	Sum of GTIs [s]
revision	3	Processing version of data	ontime2	40935.418354213	Sum of GTIs [s]
			ontime3	40938.559314609	Sum of GTIs [s]
			ontime6	40941.700314879	Sum of GTIs [s]
			l1events	1565619	Number of level 1 events

2.1.4 Events

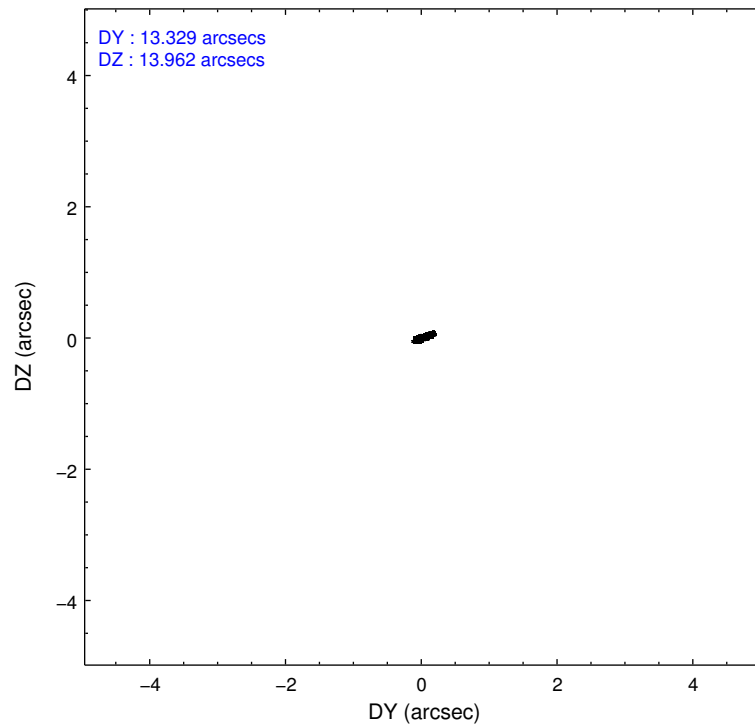
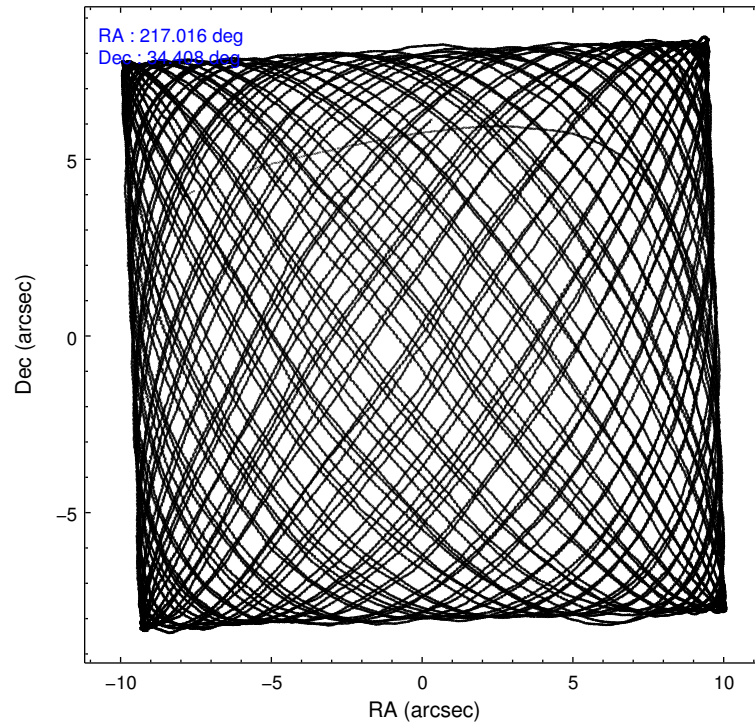
	ccd 0	ccd 1	ccd 2	ccd 3	ccd 6
level 1 events	303701	292277	339519	312109	318013
rejected events	273976	260360	310487	284169	287543
rejected %	90%	89%	91%	91%	90%

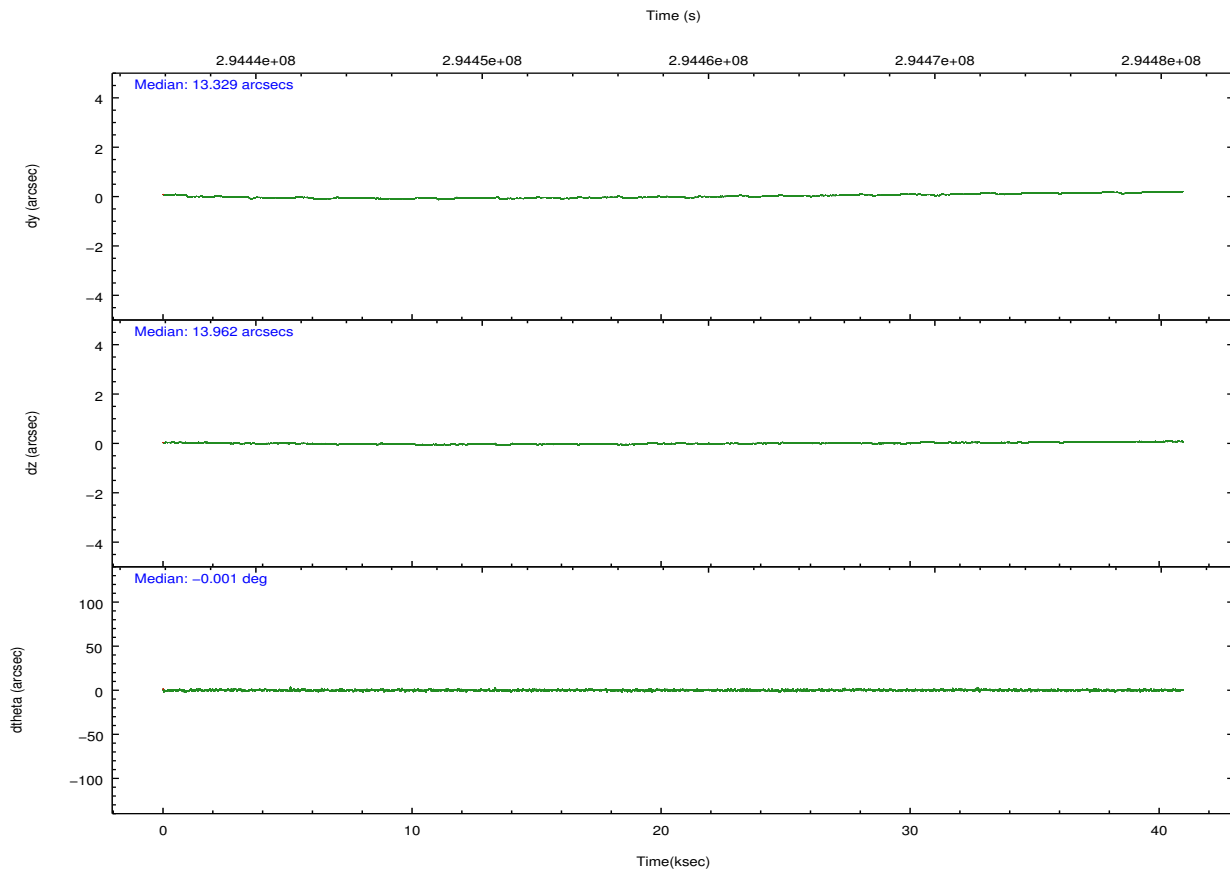
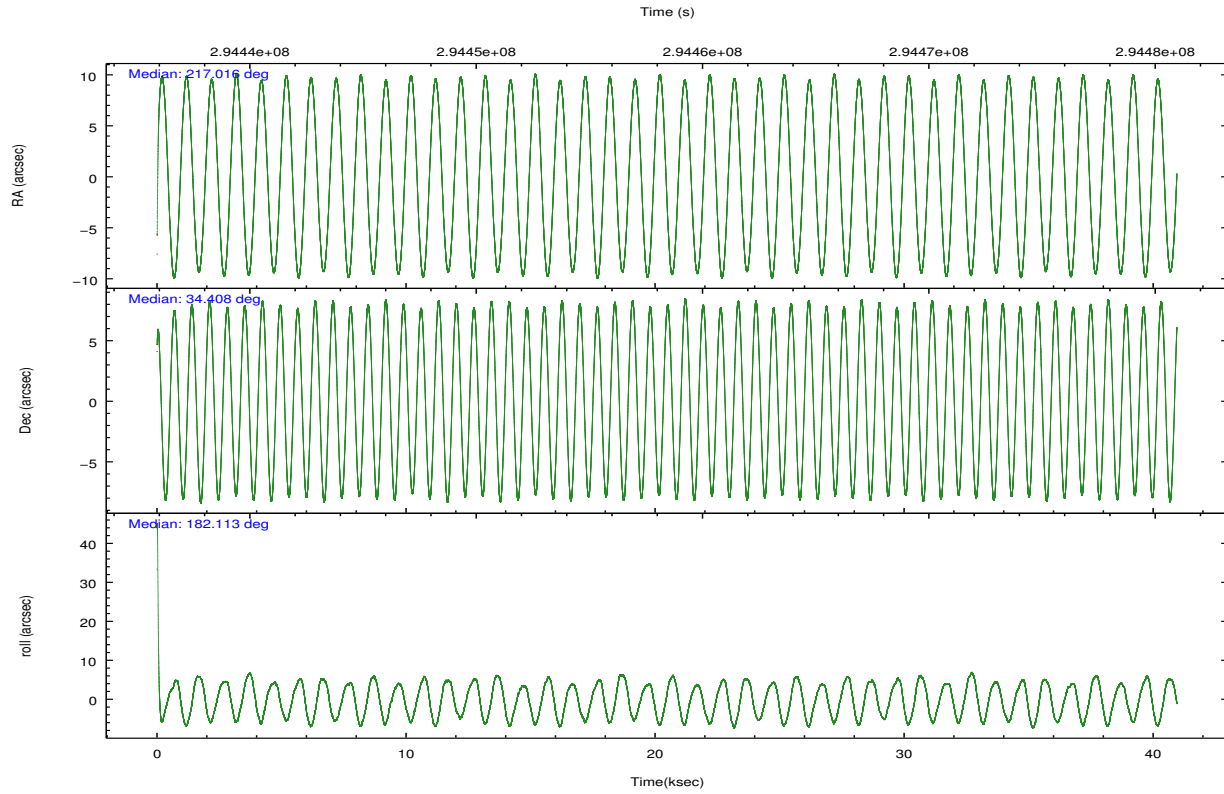
	ccd 0	ccd 1	ccd 2	ccd 3	ccd 6
grade 0 events	10929	11492	11322	10339	11341
	3%	3%	3%	3%	3%
grade 1 events	164	164	193	197	155
	0%	0%	0%	0%	0%
grade 2 events	7461	7342	7033	6241	6829
	2%	2%	2%	1%	2%
grade 3 events	3444	3733	3038	3280	3451
	1%	1%	0%	1%	1%
grade 4 events	3165	3604	3198	3317	3447
	1%	1%	0%	1%	1%
grade 5 events	8900	10221	8476	10693	10468
	2%	3%	2%	3%	3%
grade 6 events	5488	6527	5125	5487	6212
	1%	2%	1%	1%	1%
grade 7 events	264150	249194	301134	272555	276110
	86%	85%	88%	87%	86%

2.2 Compared Parameters

Parameter	Planned	Actual	Parameter	Planned	Actual
Instrument	ACIS	ACIS	Obspar format version number	7	7
Detector	ACIS-01236	ACIS-01236	Obspar file type	PREDICTED	ACTUAL
Grating	NONE	NONE	Obspar update status	NONE	UPDATED
Data mode	VFAINT	VFAINT	Number of optional ACIS chips dropped	0	0
Observation mode	POINTING	POINTING	On-chip summing requested	N	N
[deg] Pointing RA	217.043707	217.0155483636028	Subarray requested	NONE	NONE
[deg] Pointing Dec	34.422939	34.40822806715516	Alternating exposures requested	N	N
[deg] Pointing Roll	181.896794	182.1214104189475	[s] Primary exposure time	0.000000	3.1
[mm] SIM focus pos	-0.782348	-0.7809083437167272			
[mm] SIM defocus	0	0.001439871863259334			
[mm] SIM translation stage pos	-233.592463	-233.5874344608287			
[mm] SIM translation stage offset	0	-0.005018542100998502			
[s] Observation start time (MET)	294438102.184000	294436613.48888			
Observation start date	2007-05-01T20:20:37	2007-05-01T19:56:53			
[s] Observation end time (MET)	294478907.184000	294479137.6659			
Observation end date	2007-05-02T07:40:42	2007-05-02T07:45:37			
Read mode	TIMED	TIMED			

2.3 Aspect





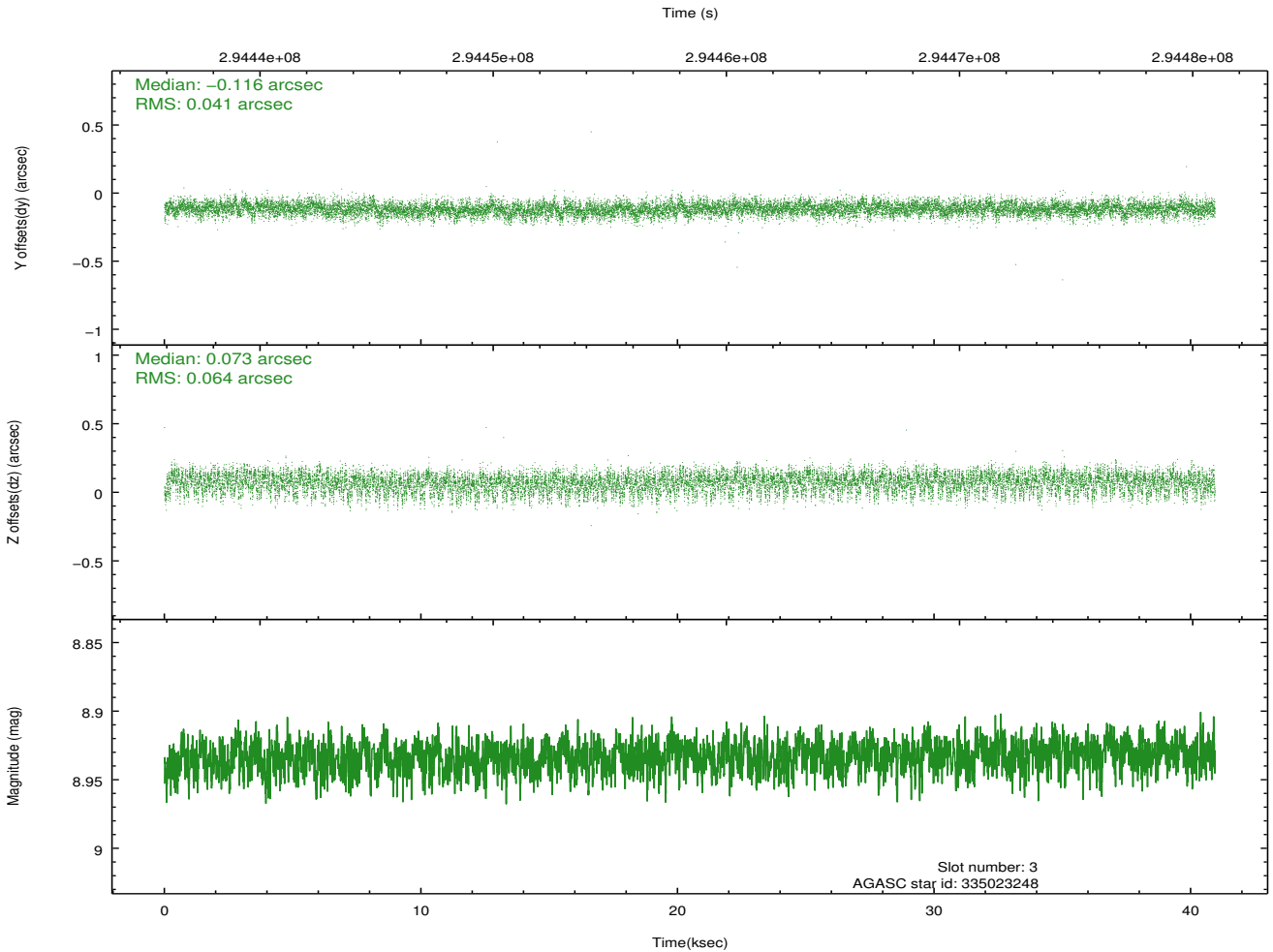
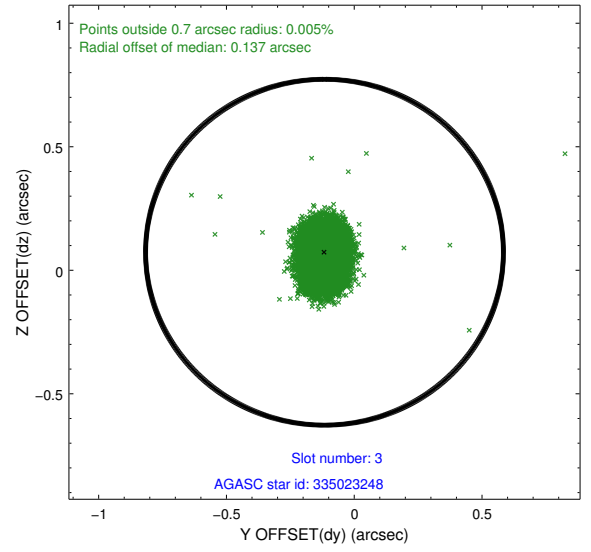
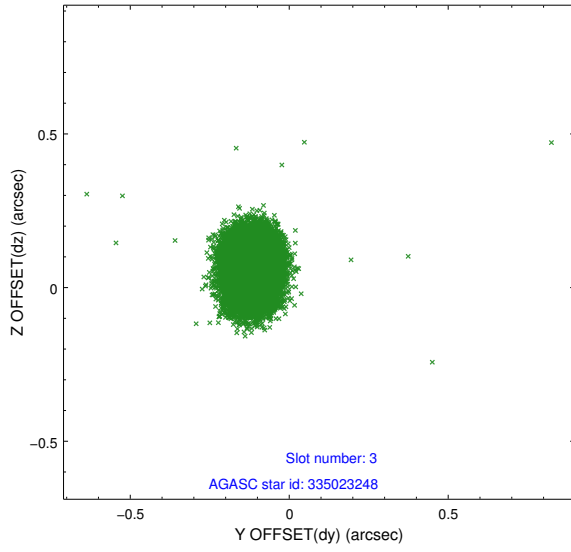
Slot Statistics

slot	status	id	mag	n_pts	med_dy	med_dz	dr1	dr2	ra	dec	mean_y	mean_z
0	FID	ACIS-I-2	7.14	9986	-0.083	-0.061	0.022	0.035	0.000000	0.000000	-768.11	-843.94
1	FID	ACIS-I-4	7.17	9986	0.241	0.068	0.015	0.024	0.000000	0.000000	2146.30	1062.29
2	FID	ACIS-I-5	7.22	9986	-0.261	0.062	0.016	0.025	0.000000	0.000000	-1822.07	1060.22
3	GUIDE	335023248	8.93	19959	-0.116	0.073	0.080	0.132	217.634832	34.944512	-1805.35	-1823.87
4	GUIDE	335028696	9.19	19969	0.245	-0.051	0.088	0.146	217.260519	33.844112	-578.82	2103.55
5	GUIDE	335030384	8.83	19958	-0.098	0.110	0.081	0.127	216.806407	34.722197	666.43	-1100.13
6	GUIDE	335417968	9.39	19951	0.122	0.131	0.118	0.187	217.358149	35.055285	-1000.80	-2245.68
7	GUIDE	335025848	9.72	19952	-0.157	-0.251	0.132	0.213	217.530531	33.778292	-1379.53	2364.04

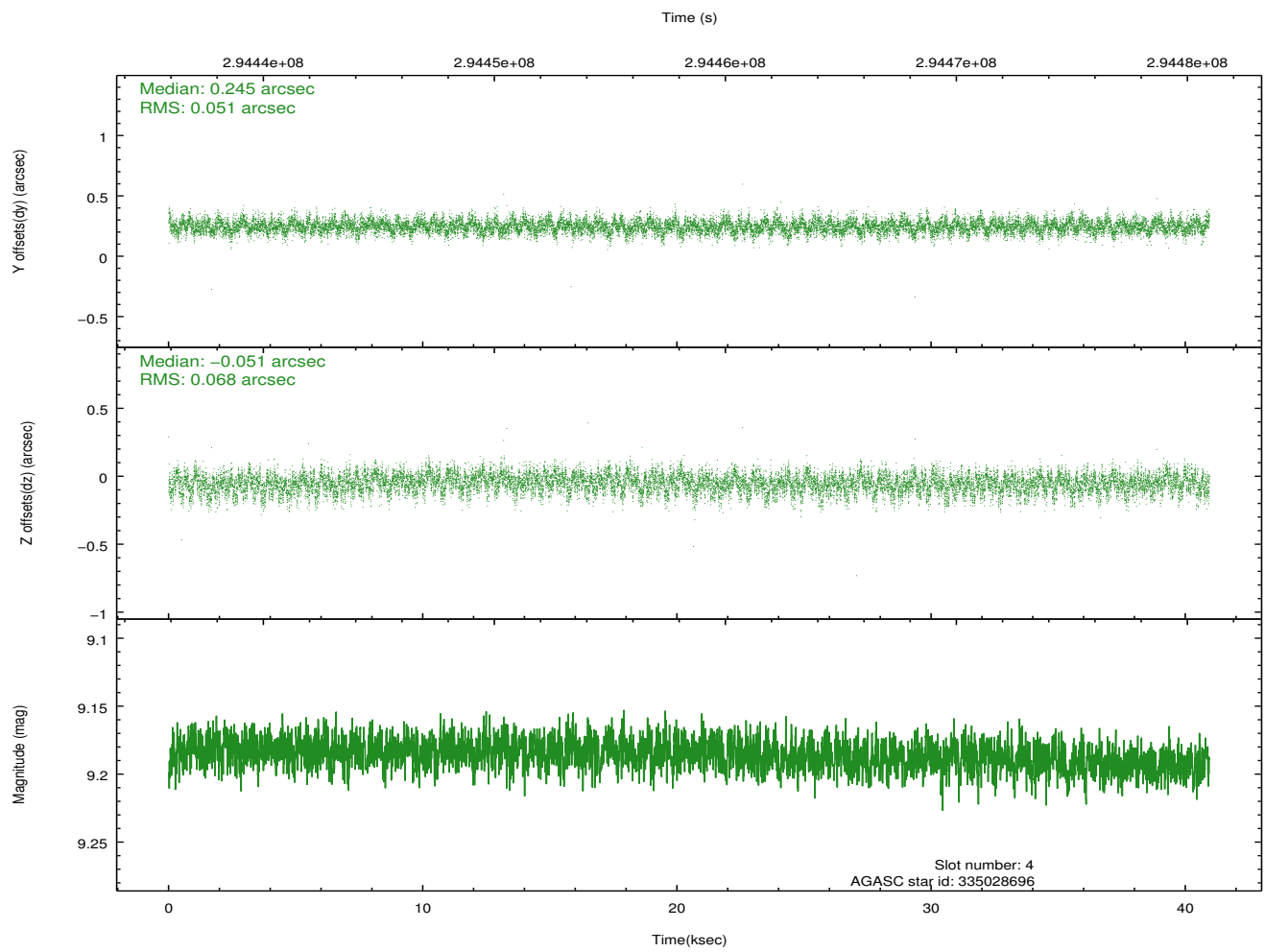
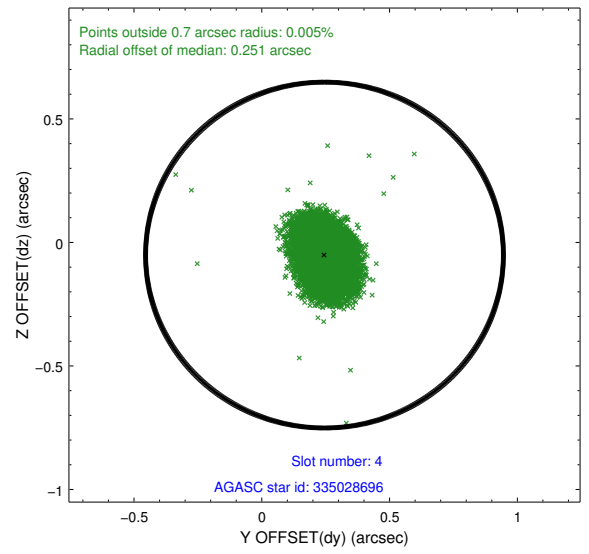
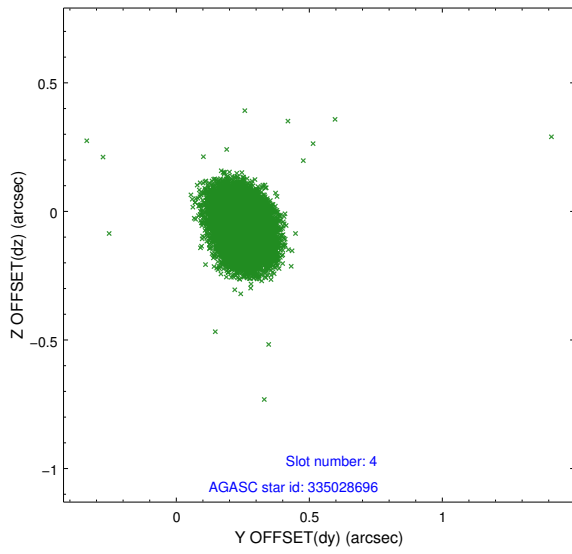
∞

2.4 Star Slots

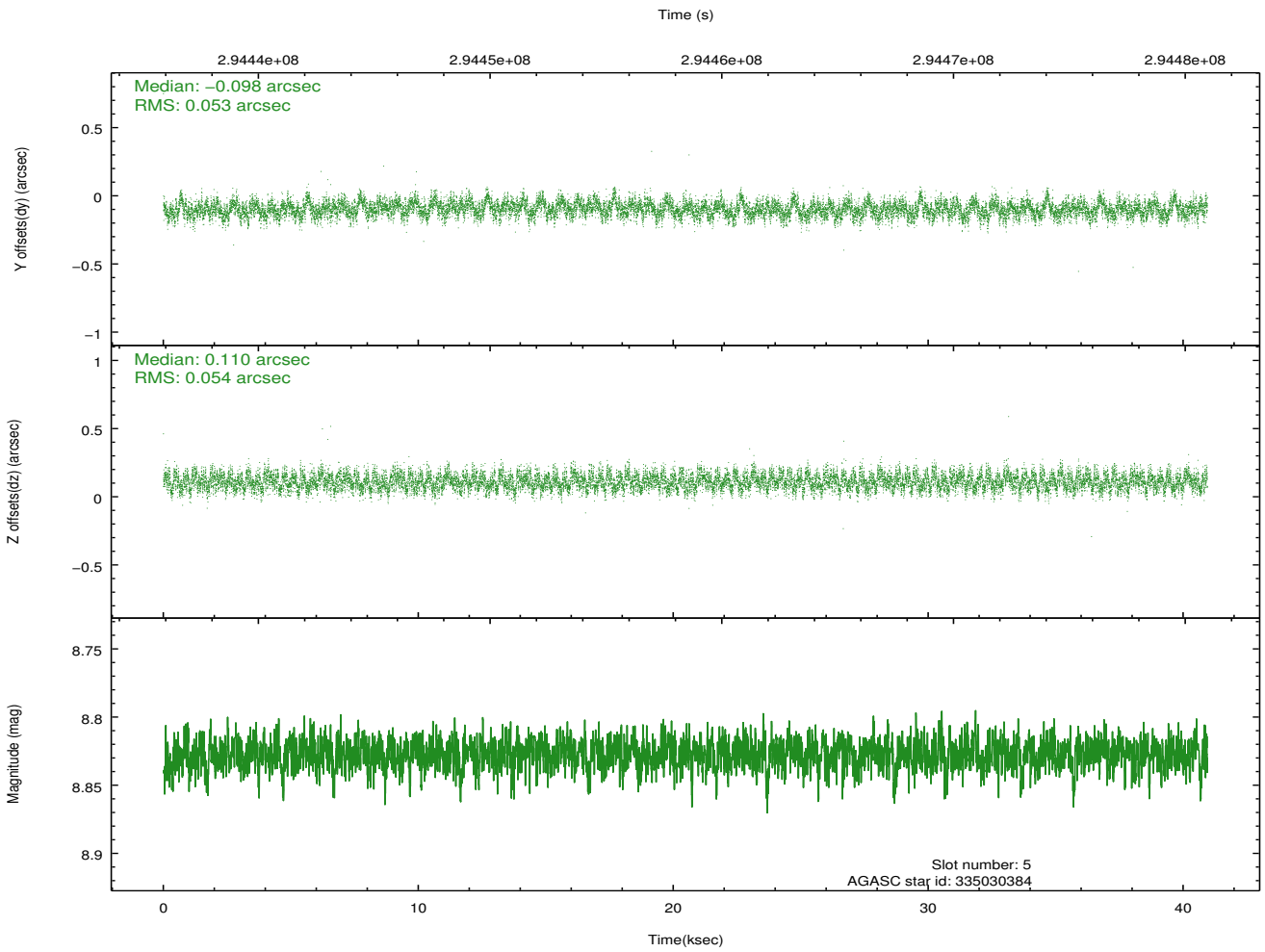
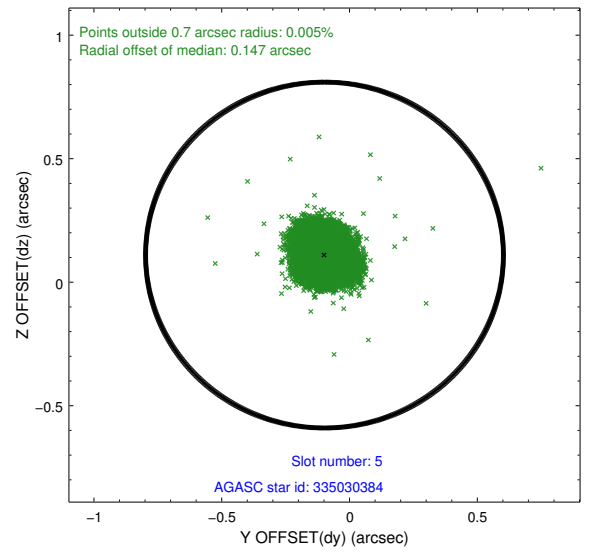
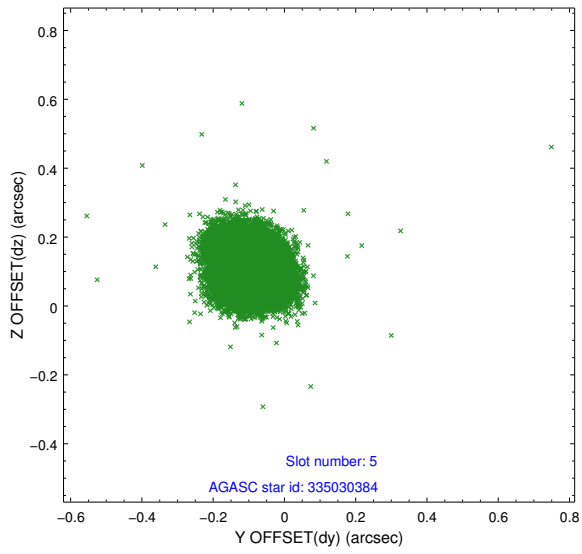
2.4.1 Slot 3



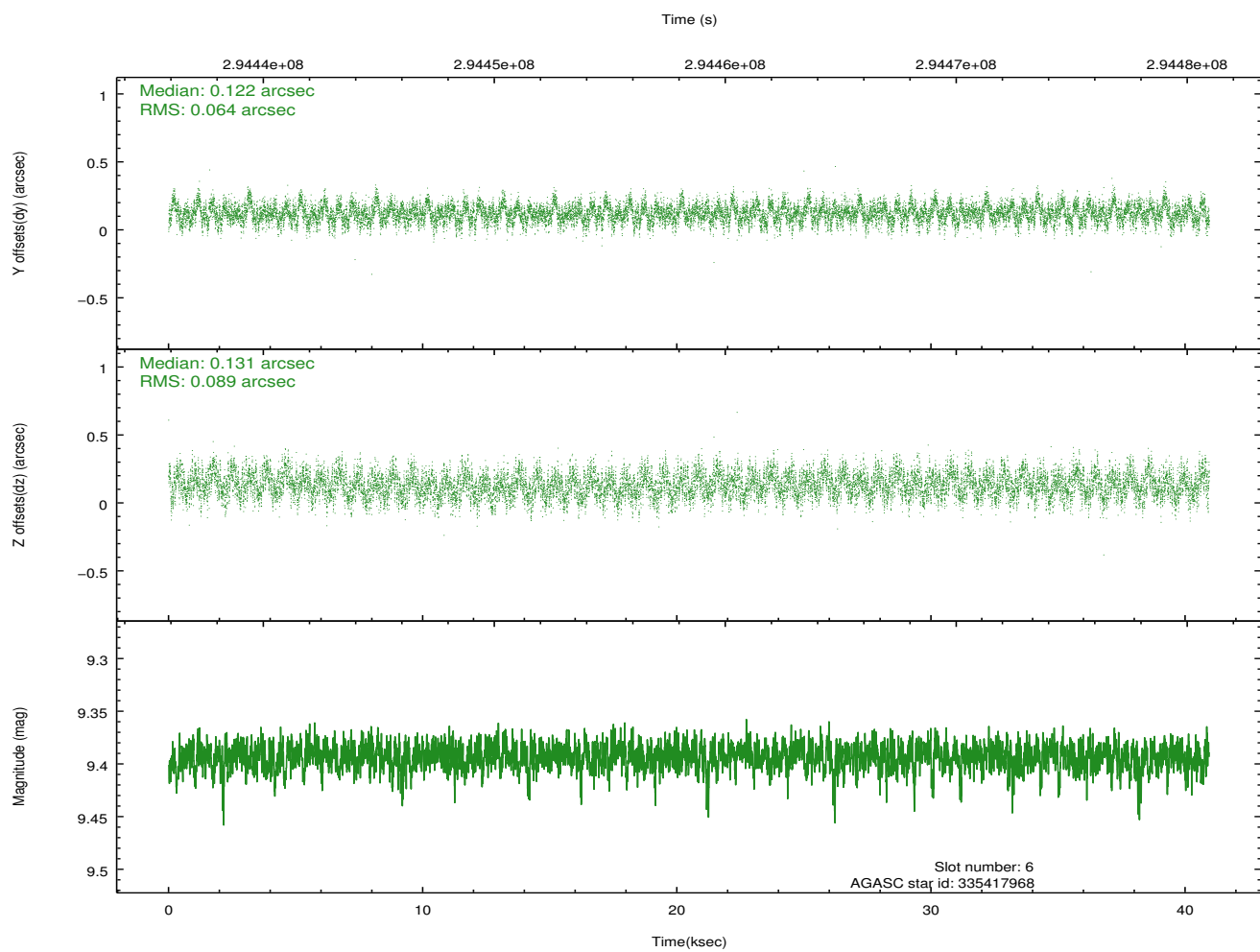
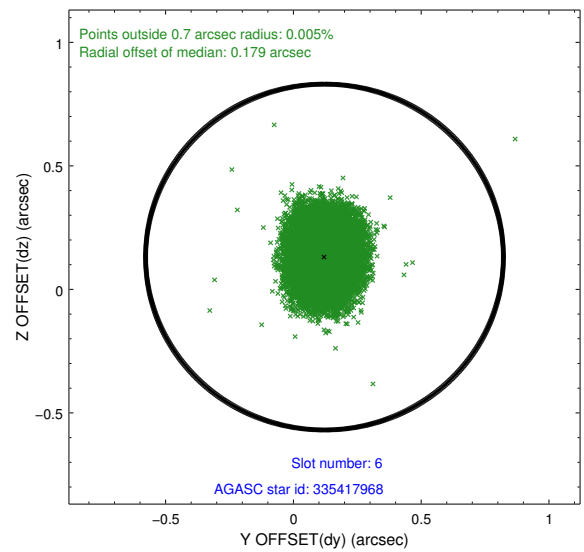
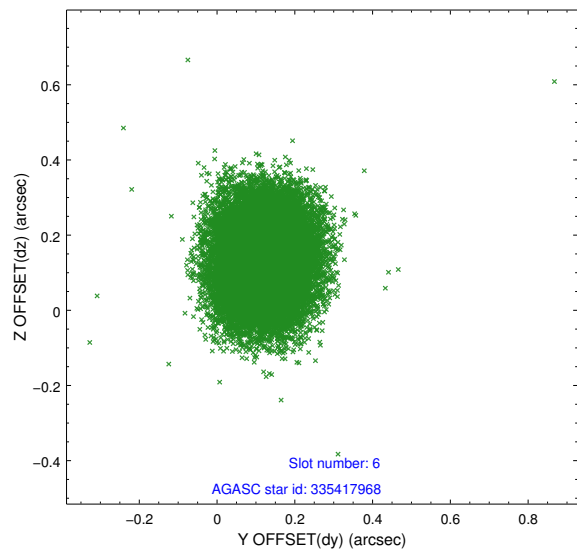
2.4.2 Slot 4



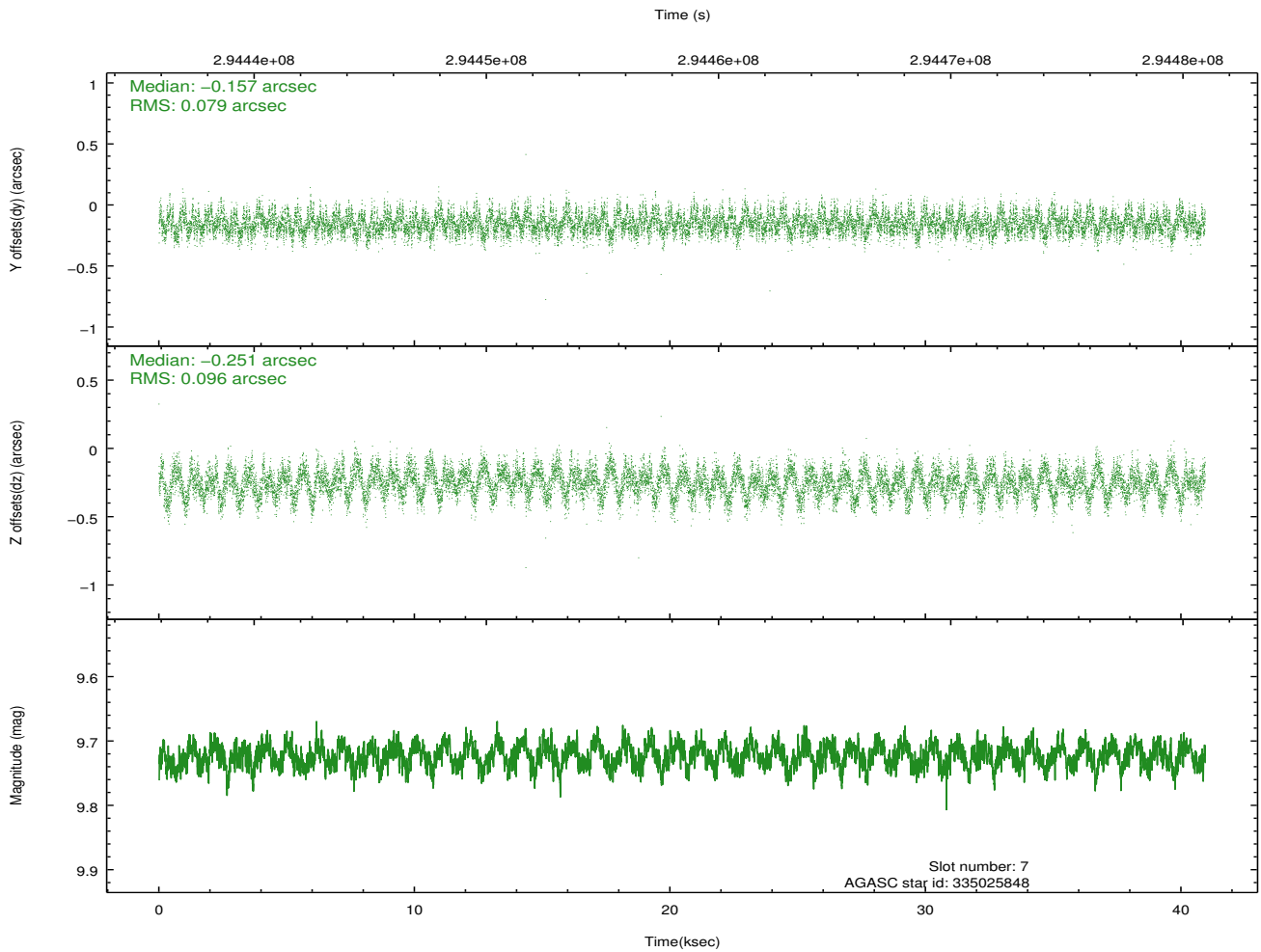
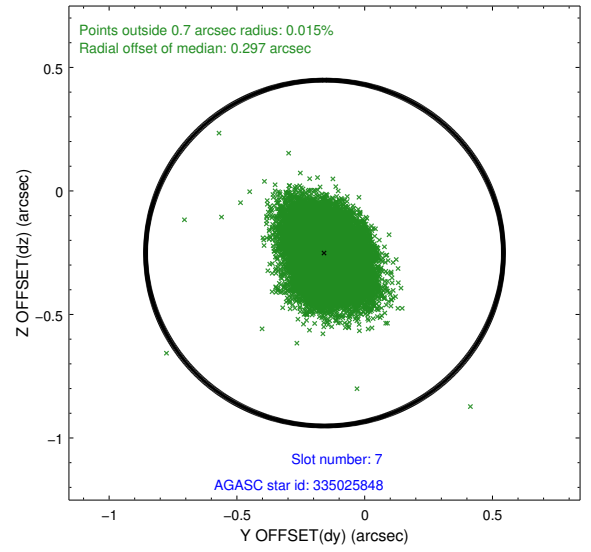
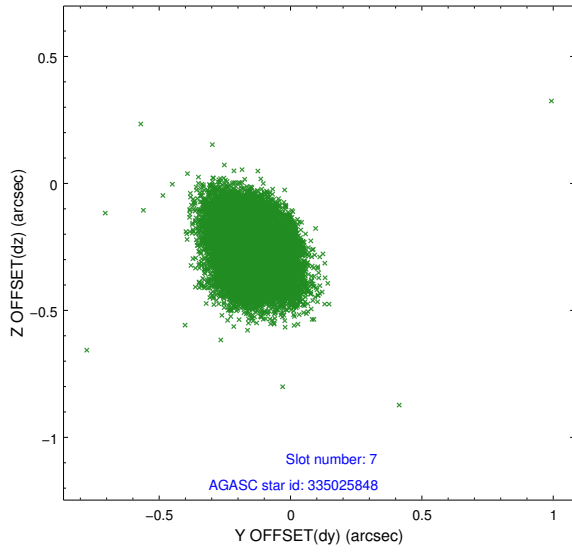
2.4.3 Slot 5



2.4.4 Slot 6

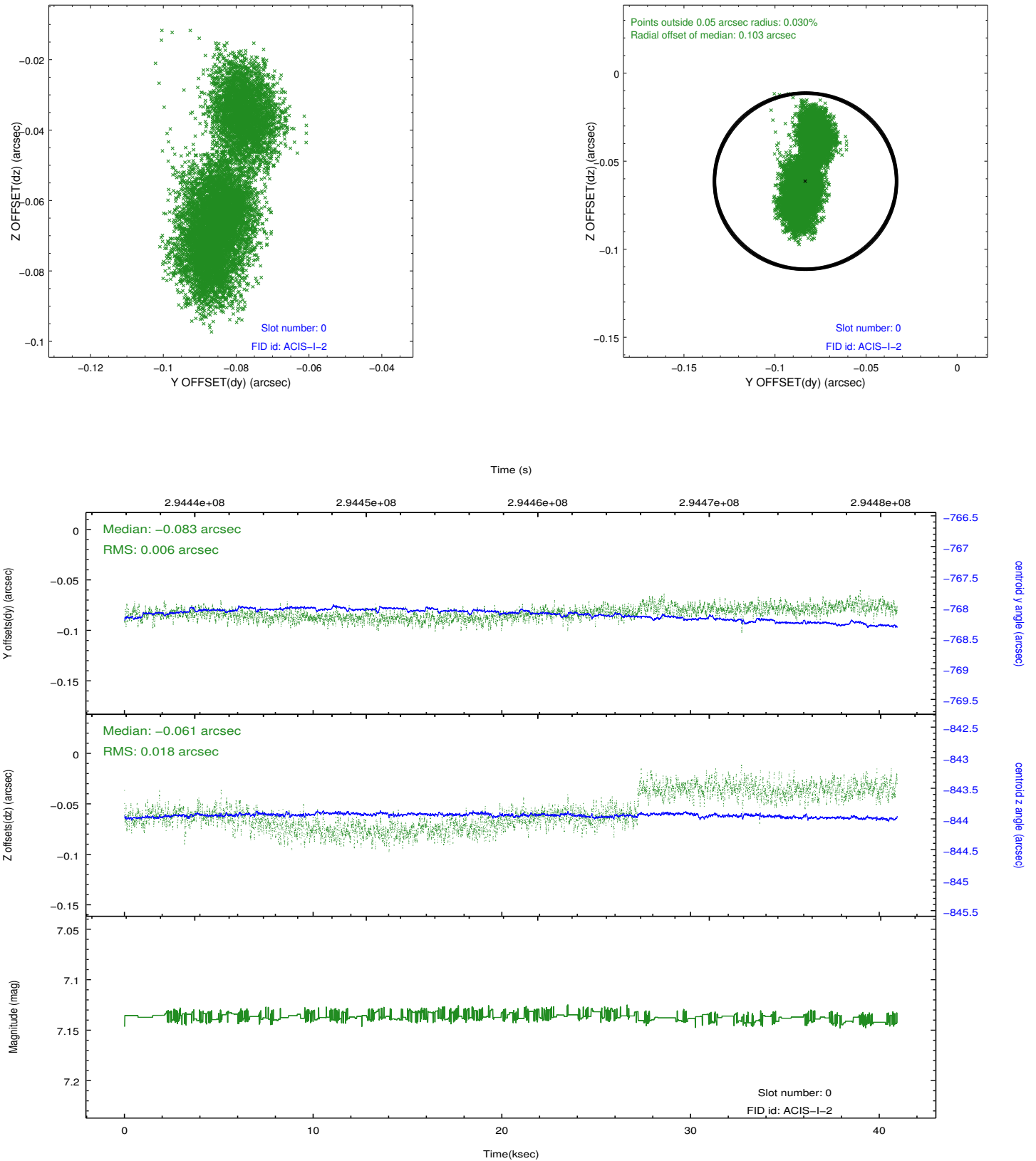


2.4.5 Slot 7

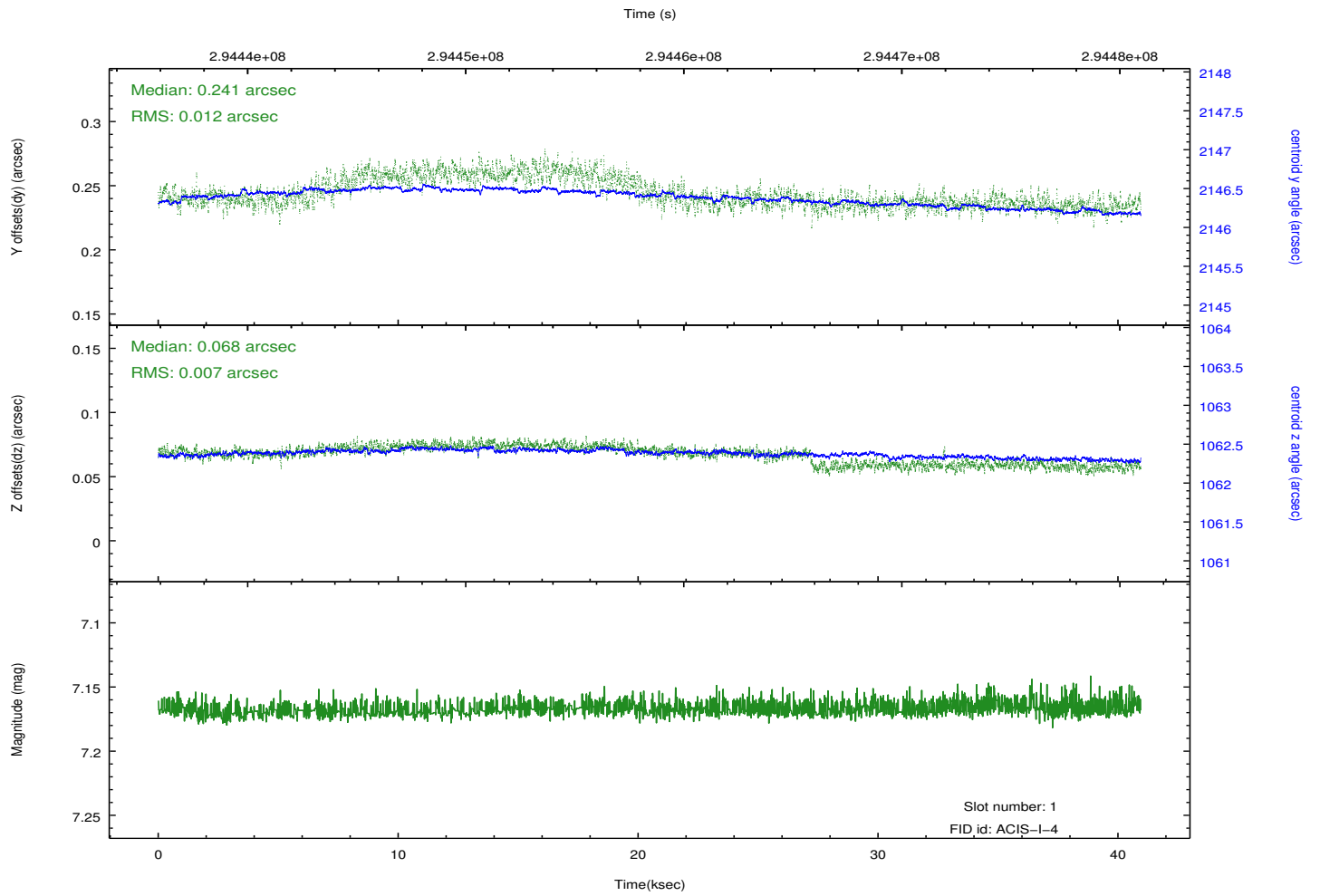
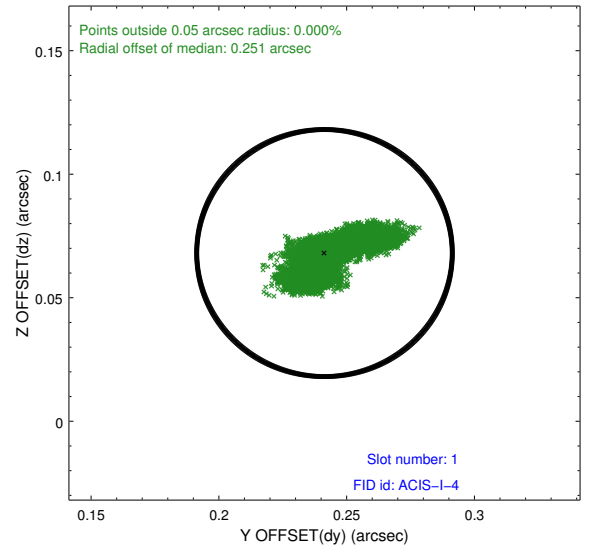
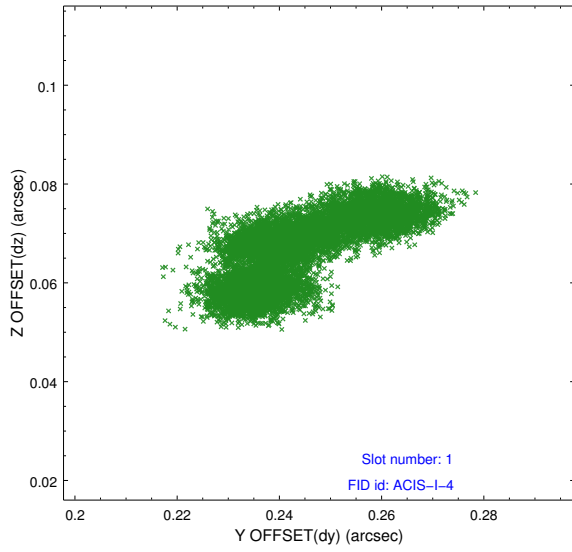


2.5 FID Slots

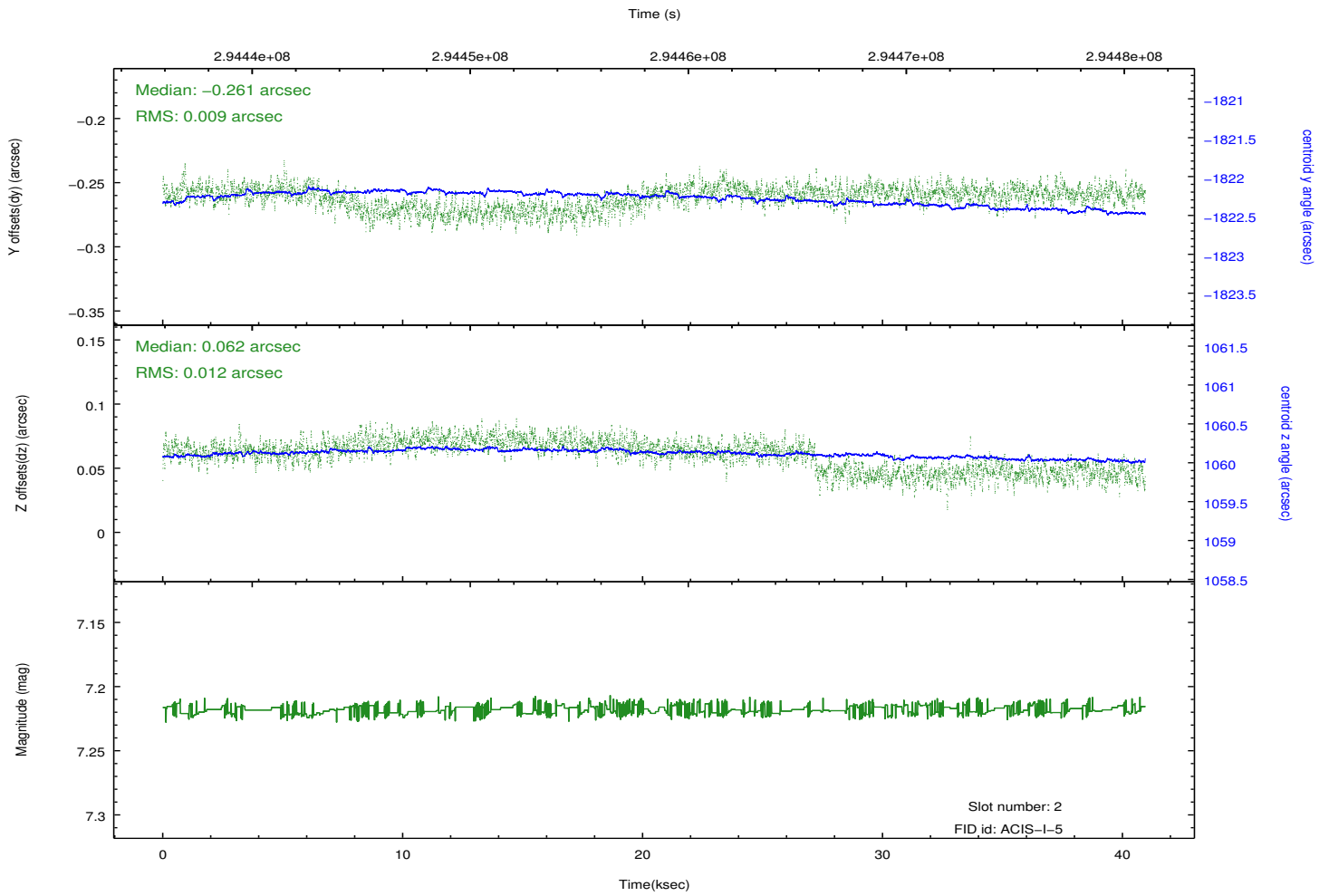
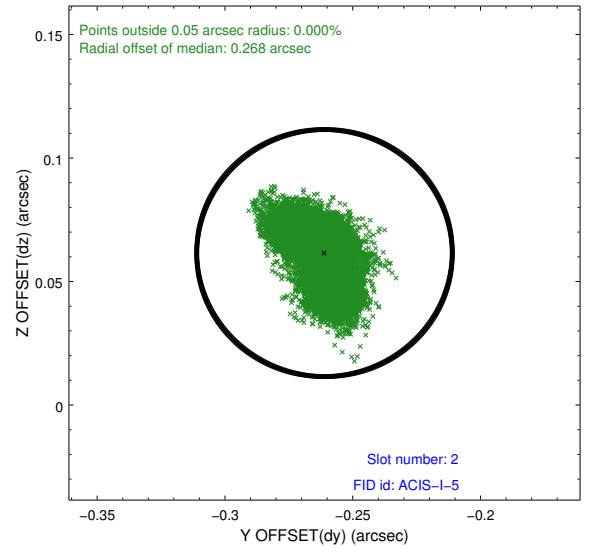
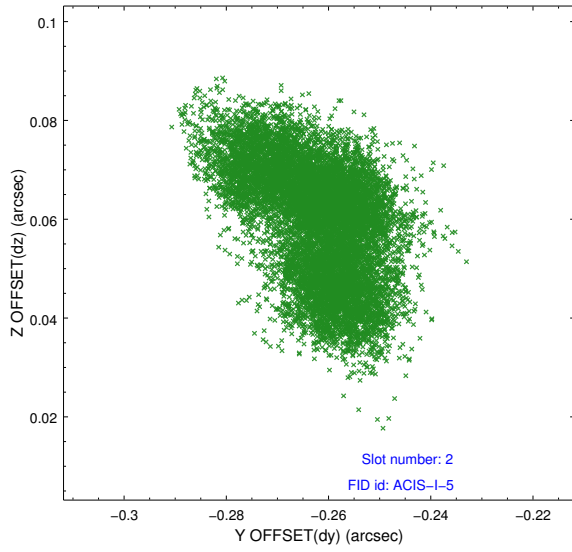
2.5.1 Slot 0



2.5.2 Slot 1



2.5.3 Slot 2



A Summary

A.1 Status

V&V Scientist	Joy Nichols
V&V Date (YYYY-MM-DD)	2012.04.25
V&V Edition	1
V&V Disposition and Status	OK
V&V Charge Time	40.9385593

A.2 Comments

Monitoring interval constraint met. User-specified optional chip S3 was not used in this observation.