

# V&V Reference Report

## L2 ASCDS Version : 8.4.4

Observation 9514 - L2 Version 2  
Chandra X-Ray Center

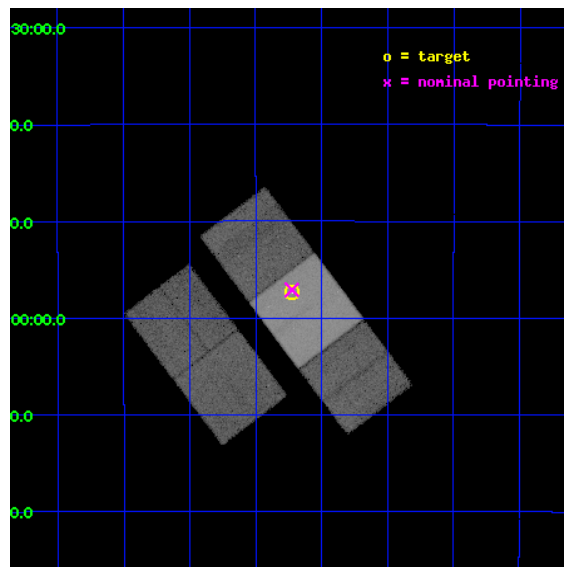
L2 Processing Date : May 12 2012

## Contents

<b>1</b>	<b>Front</b>	<b>2</b>
<b>2</b>	<b>OBI</b>	<b>3</b>
2.1	OBI . . . . .	3
2.1.1	Images . . . . .	3
2.1.2	Bias . . . . .	3
2.1.3	Parameters . . . . .	4
2.1.4	Events . . . . .	4
2.2	Compared Parameters . . . . .	5
2.3	Aspect . . . . .	6
2.4	Star Slots . . . . .	9
2.4.1	Slot 3 . . . . .	9
2.4.2	Slot 4 . . . . .	10
2.4.3	Slot 5 . . . . .	11
2.4.4	Slot 6 . . . . .	12
2.4.5	Slot 7 . . . . .	13
2.5	FID Slots . . . . .	14
2.5.1	Slot 0 . . . . .	14
2.5.2	Slot 1 . . . . .	15
2.5.3	Slot 2 . . . . .	16
<b>A</b>	<b>Summary</b>	<b>17</b>
A.1	Status . . . . .	17
A.2	Comments . . . . .	17

# 1 Front

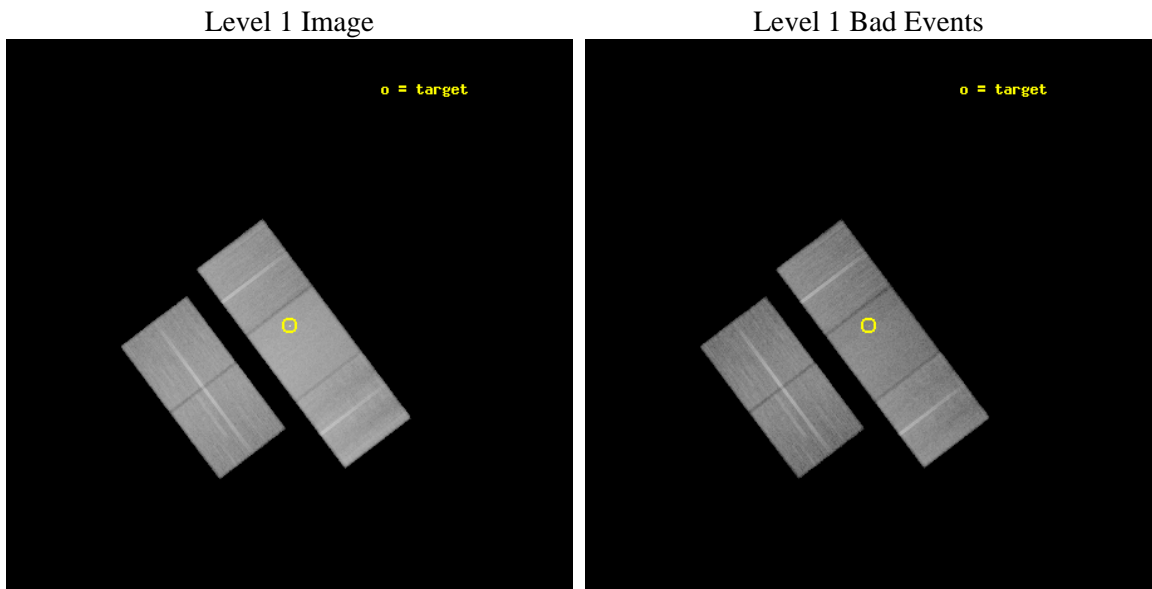
seq_num	600655	Sequence number
obs_id	9514	Observation id
title	Dust-to-gas Ratio of High Redshift Galaxies	Proposal title
observer	Prof. Xinyu Dai	Principal investigator
object	Q1355-2257	Source name
dtcycle	0	&#160
cycle	P	events from which exps? Prim/Second/Both
ra_targ	208.930833	Observer's specified target RA [deg]
dec_targ	-22.956361	Observer's specified target Dec [deg]
ra_nom	208.93133007224	Nominal RA [deg]
dec_nom	-22.951521230806	Nominal Dec [deg]
roll_nom	52.94270009012	Nominal Roll [deg]
revision	2	Processing version of data
ontime	31598.30024302	Sum of GTIs [s]
livetime	31185.445188015	Livetime [s]
ontime2	31592.018292069	Sum of GTIs [s]
ontime3	31592.018242419	Sum of GTIs [s]
ontime6	31582.595291317	Sum of GTIs [s]
ontime7	31598.30024302	Sum of GTIs [s]
ontime8	31598.30024302	Sum of GTIs [s]
l2events	304442	Number of level 2 events



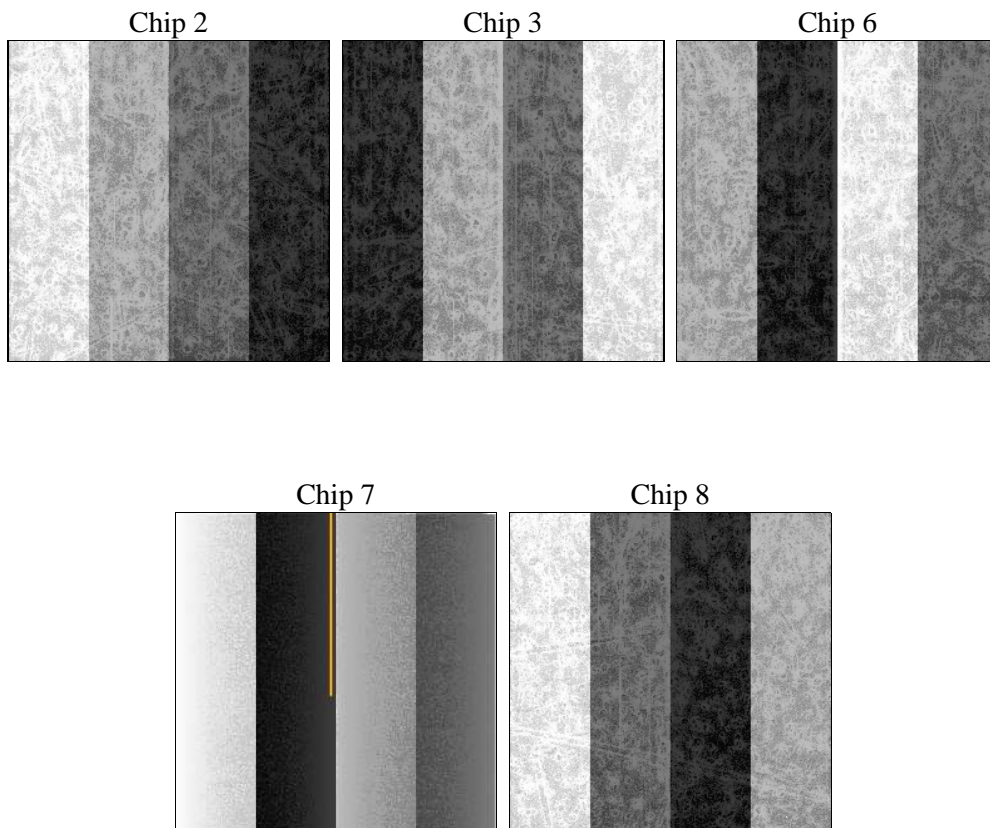
## 2 OBI

### 2.1 OBI

#### 2.1.1 Images



#### 2.1.2 Bias



### 2.1.3 Parameters

obi_num	0	Obi number	sched_exp_time	31542.000000	[s] Scheduled observation exposure time
ascdsver	8.4.4	Processing system revision	ontime	31598.30024302	Sum of GTIs [s]
caldsver	4.4.9	&#160	ontime2	31592.018292069	Sum of GTIs [s]
date	2012-05-12T01:23:49	Date and time of file creation	ontime3	31592.018242419	Sum of GTIs [s]
revision	2	Processing version of data	ontime6	31582.595291317	Sum of GTIs [s]
			ontime7	31598.30024302	Sum of GTIs [s]
			ontime8	31598.30024302	Sum of GTIs [s]
			l1events	1723991	Number of level 1 events

### 2.1.4 Events

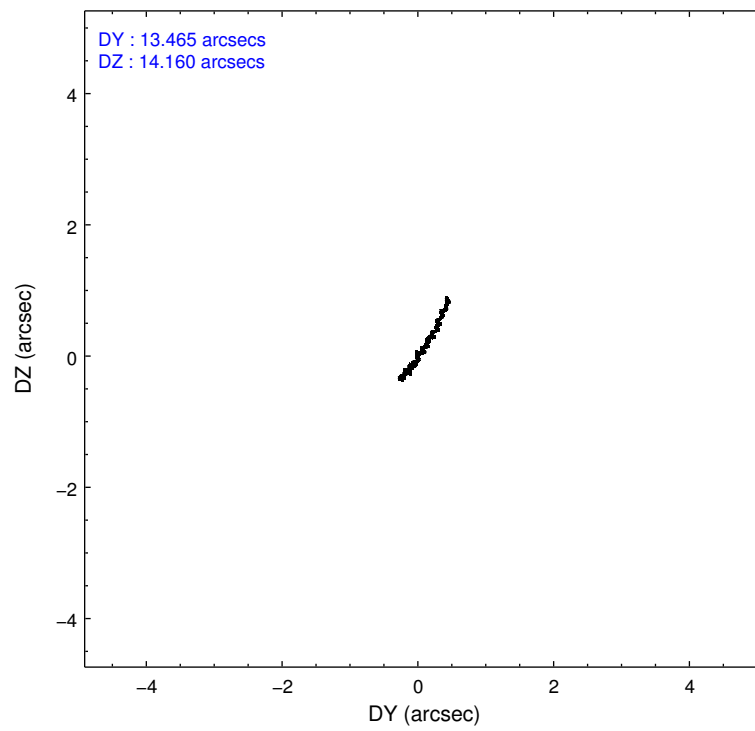
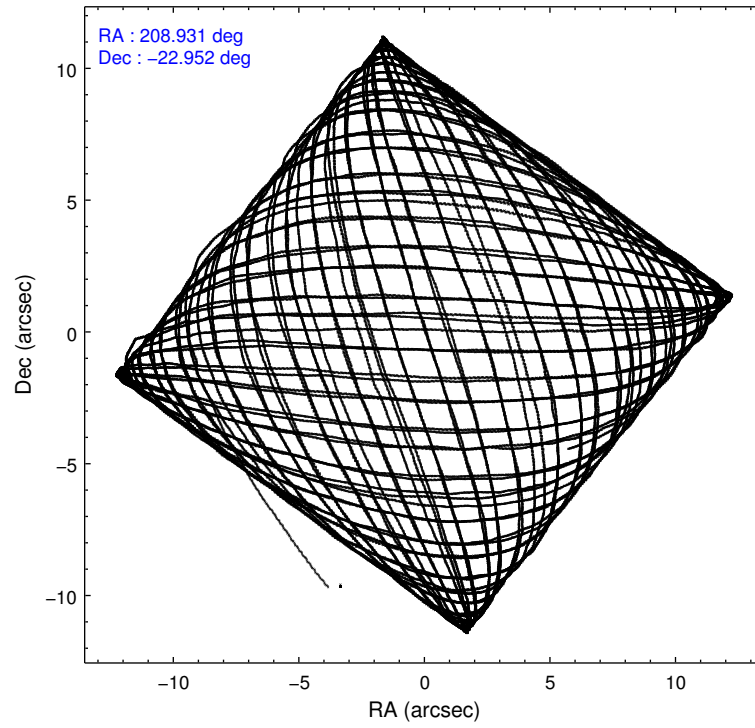
	ccd 2	ccd 3	ccd 6	ccd 7	ccd 8
level 1 events	301163	294207	309908	426087	392626
rejected events	265916	258301	272586	248172	303742
rejected %	88%	87%	87%	58%	77%

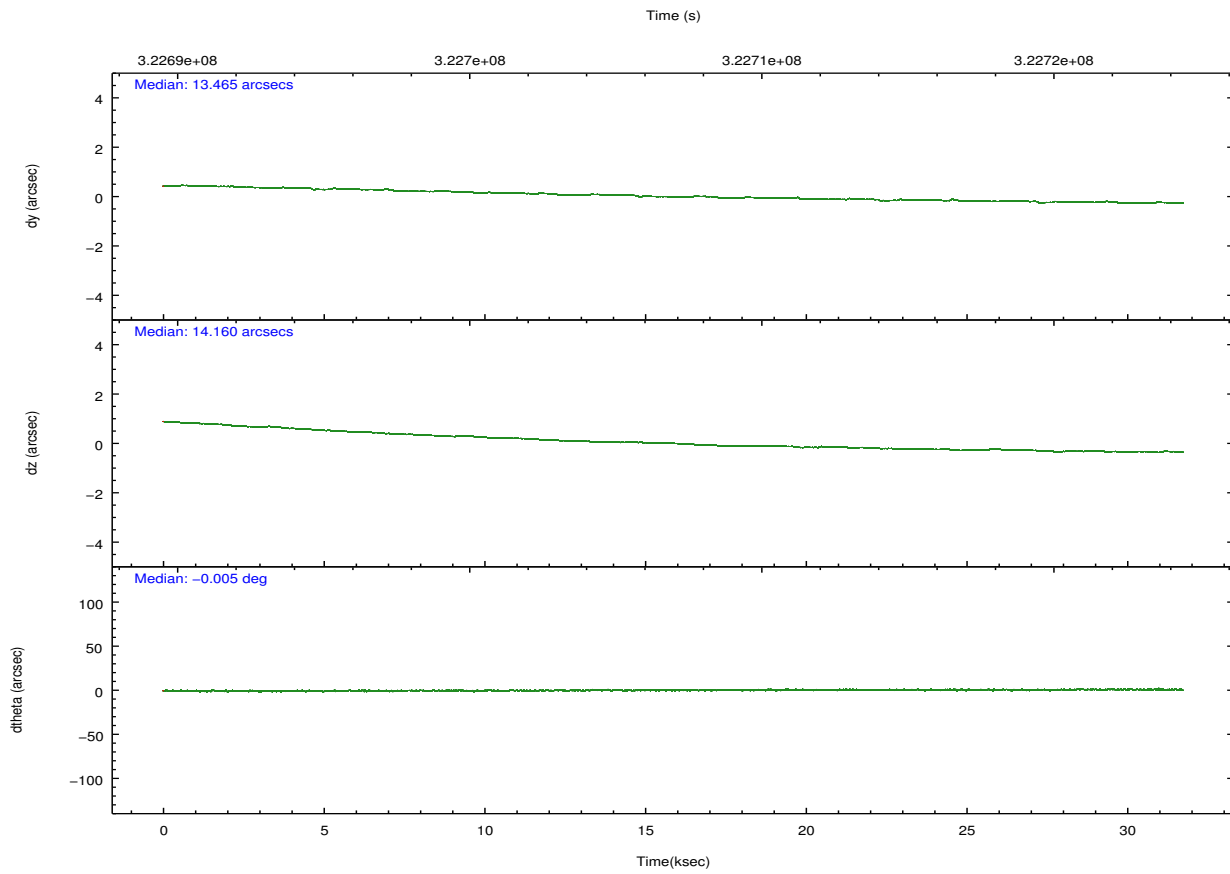
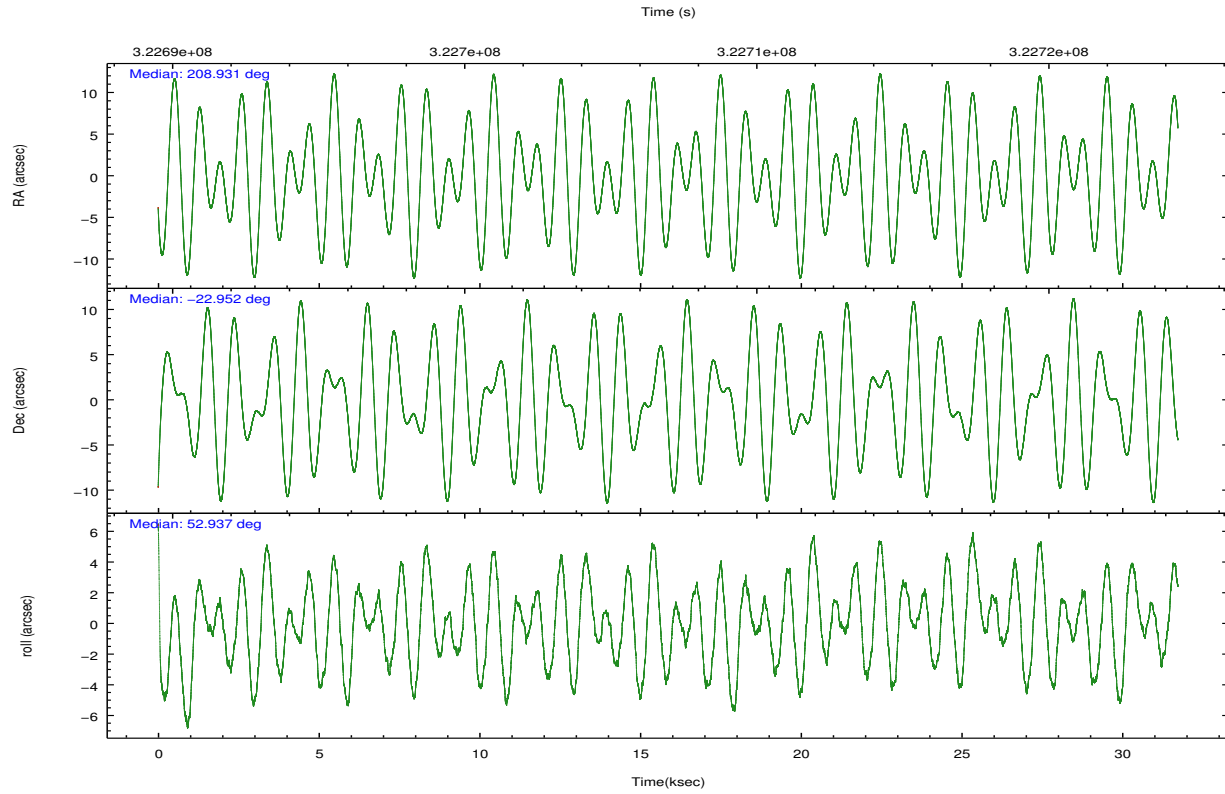
	ccd 2	ccd 3	ccd 6	ccd 7	ccd 8
grade 0 events	15024	15591	14592	16008	27897
	4%	5%	4%	3%	7%
grade 1 events	174	212	175	474	312
	0%	0%	0%	0%	0%
grade 2 events	7623	7188	8196	36515	20082
	2%	2%	2%	8%	5%
grade 3 events	3294	3280	3482	15111	9299
	1%	1%	1%	3%	2%
grade 4 events	3432	3383	3494	15015	8578
	1%	1%	1%	3%	2%
grade 5 events	12157	14257	14736	39739	19251
	4%	4%	4%	9%	4%
grade 6 events	5882	6469	7568	95306	23034
	1%	2%	2%	22%	5%
grade 7 events	253577	243827	257665	207919	284173
	84%	82%	83%	48%	72%

## 2.2 Compared Parameters

Parameter	Planned	Actual	Parameter	Planned	Actual
Instrument	ACIS	ACIS	Obspar format version number	7	7
Detector	ACIS-23678	ACIS-23678	Obspar file type	PREDICTED	ACTUAL
Grating	NONE	NONE	Obspar update status	NONE	UPDATED
Data mode	VFAINT	VFAINT	CCD I0 on	N	N
Observation mode	POINTING	POINTING	CCD I1 on	N	N
[deg] Pointing RA	208.928083	208.9313300722358	CCD I2 on	O1	Y
[deg] Pointing Dec	-22.978708	-22.95152123080565	CCD I3 on	Y	Y
[deg] Pointing Roll	52.784799	52.94270009012011	CCD S0 on	N	N
[mm] SIM focus pos	-0.684267	-0.6828225247311905	CCD S1 on	N	N
[mm] SIM defocus	0	0.001444936568705701	CCD S2 on	Y	Y
[mm] SIM translation stage pos	-190.132523	-190.1400660498719	CCD S3 on	Y	Y
[mm] SIM translation stage offset	0	0.00754346686406393	CCD S4 on	Y	Y
[s] Observation start time (MET)	322691280.184000	322690337.53775	CCD S5 on	N	N
Observation start date	2008-03-23T20:26:55	2008-03-23T20:12:17	Number of optional ACIS chips dropped	0	0
[s] Observation end time (MET)	322722822.184000	322723508.07686	On-chip summing requested	N	N
Observation end date	2008-03-24T05:12:37	2008-03-24T05:25:08	Subarray requested	NONE	NONE
Read mode	TIMED	TIMED	Alternating exposures requested	N	N
			[s] Primary exposure time	0.000000	3.1

## 2.3 Aspect



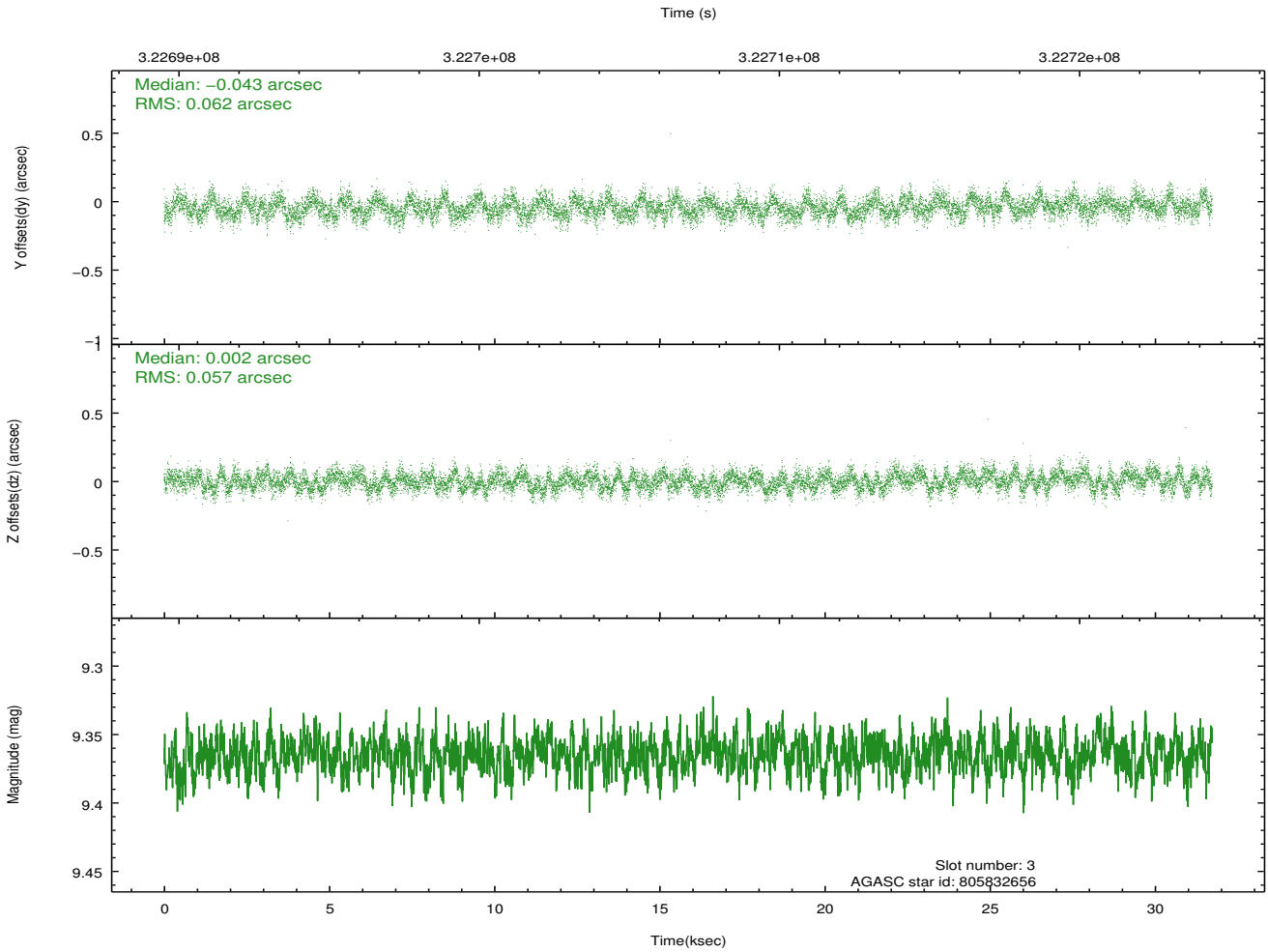
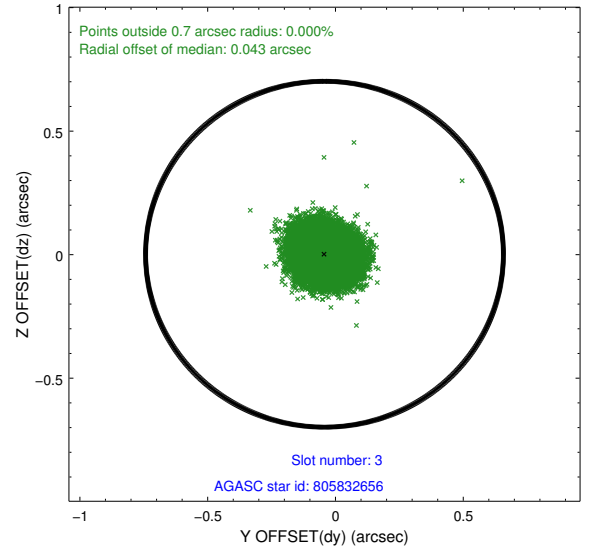
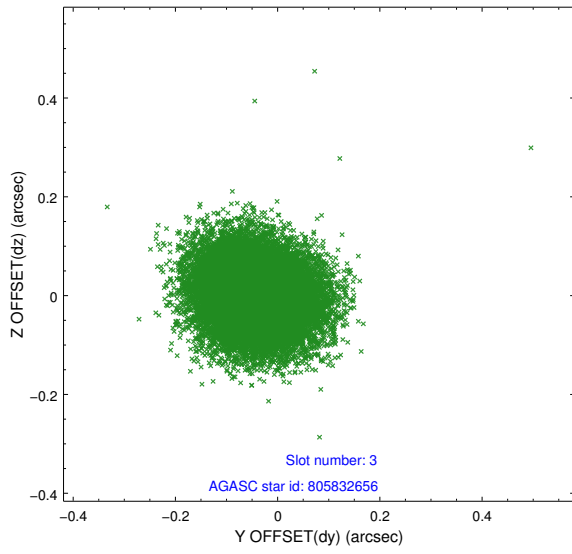


### Slot Statistics

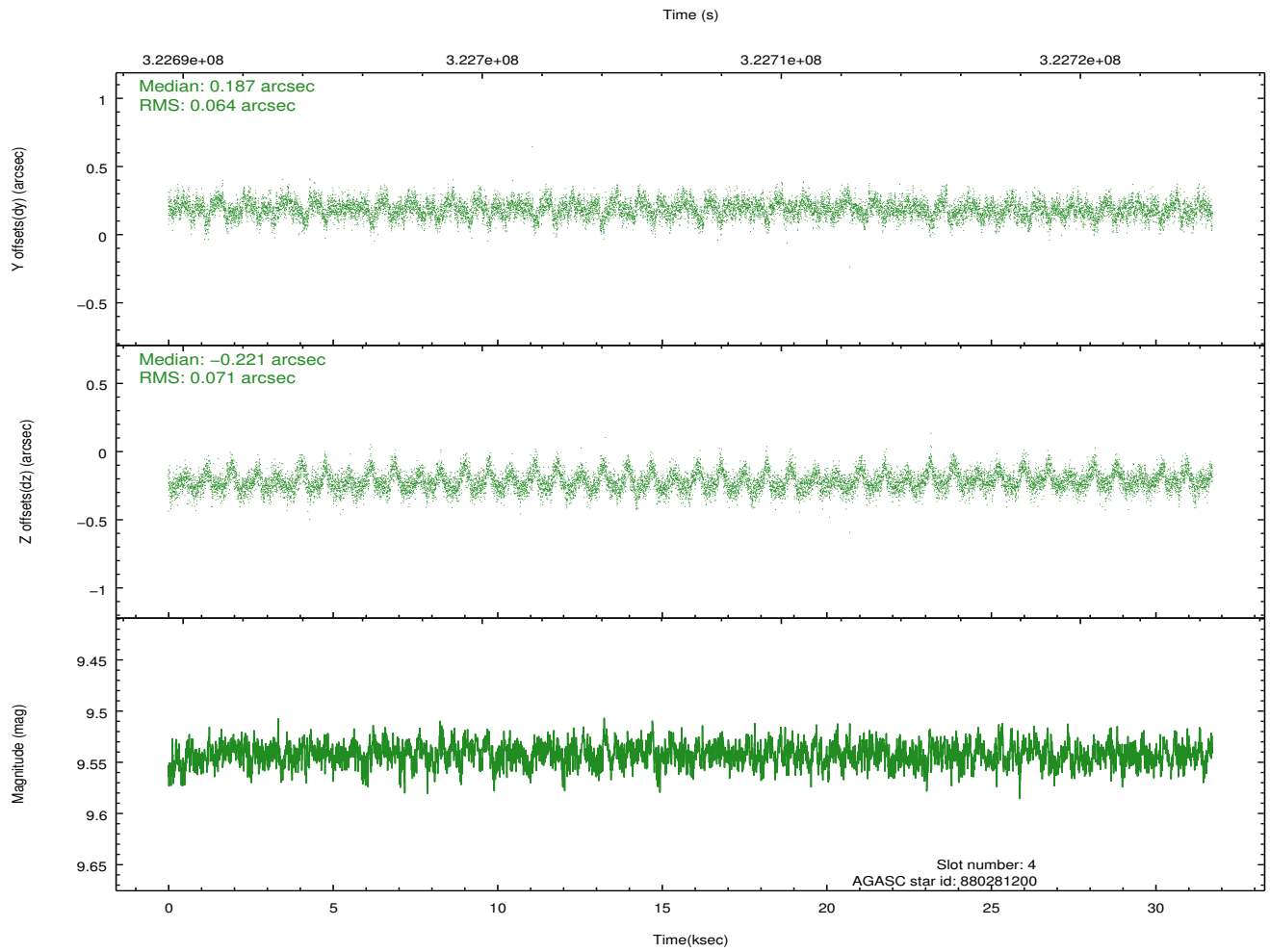
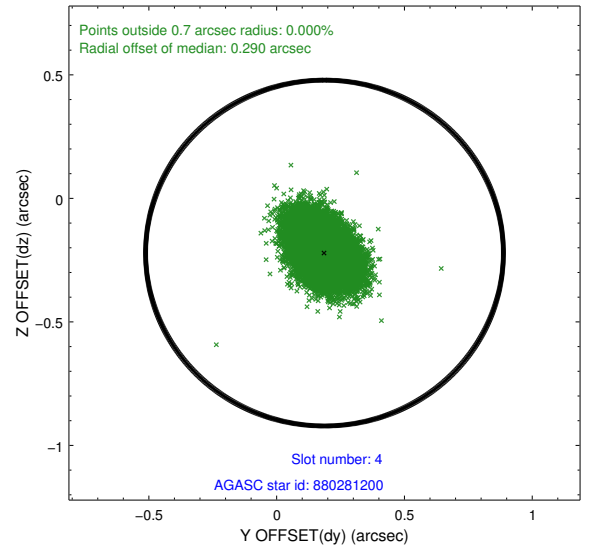
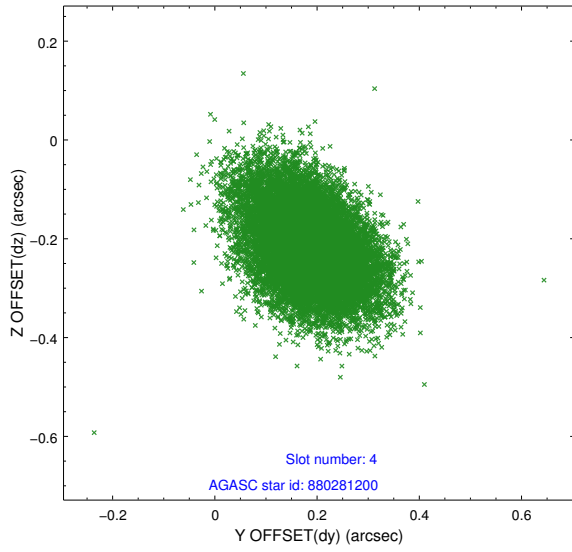
slot	status	id	mag	n_pts	med_dy	med_dz	dr1	dr2	ra	dec	mean_y	mean_z
0	FID	ACIS-S-2	7.10	7738	-0.052	-0.045	0.019	0.027	0.000000	0.000000	-766.47	-1735.66
1	FID	ACIS-S-4	7.19	7738	0.174	0.039	0.013	0.024	0.000000	0.000000	2146.99	172.88
2	FID	ACIS-S-5	7.22	7737	-0.152	0.016	0.017	0.023	0.000000	0.000000	-1819.35	166.56
3	GUIDE	805832656	9.36	15458	-0.043	0.002	0.091	0.144	208.977514	-22.374426	1831.91	1185.09
4	GUIDE	880281200	9.54	15467	0.187	-0.221	0.101	0.171	208.177700	-23.037107	-1676.02	1848.82
5	GUIDE	881987632	8.61	15469	-0.314	0.077	0.069	0.115	209.653770	-22.864370	1778.88	-1671.10
6	GUIDE	881985216	9.18	15463	0.055	0.254	0.100	0.163	209.631514	-23.233625	672.51	-2411.05
7	GUIDE	880281088	9.47	15440	0.114	-0.118	0.116	0.191	207.951911	-23.115091	-2354.42	2270.26

## 2.4 Star Slots

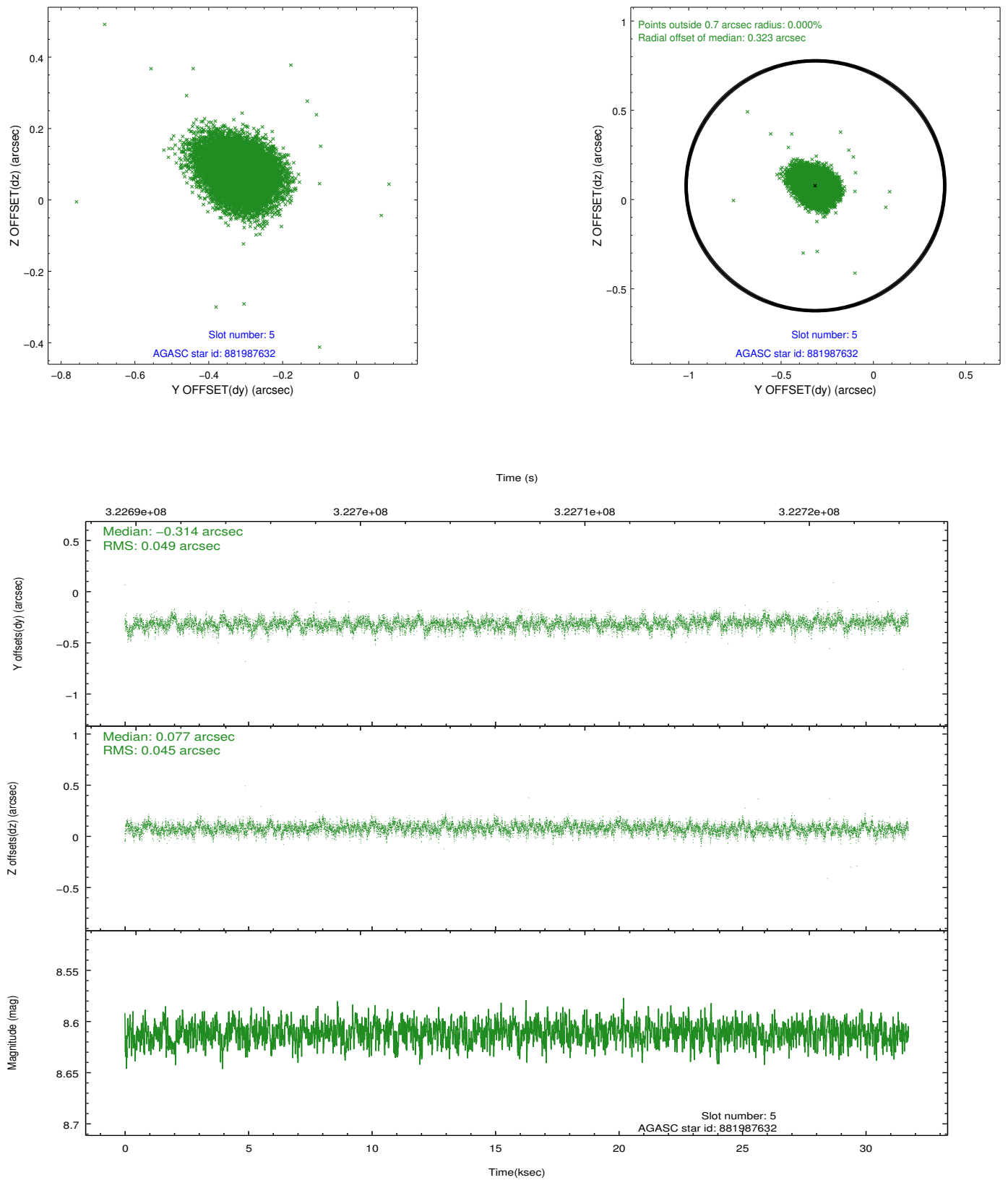
### 2.4.1 Slot 3



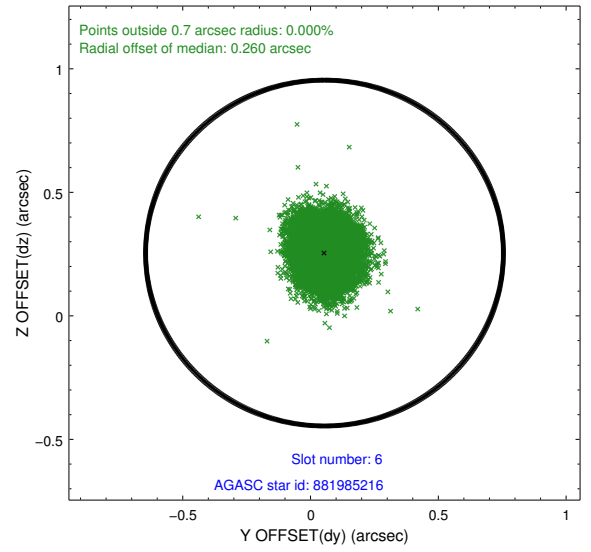
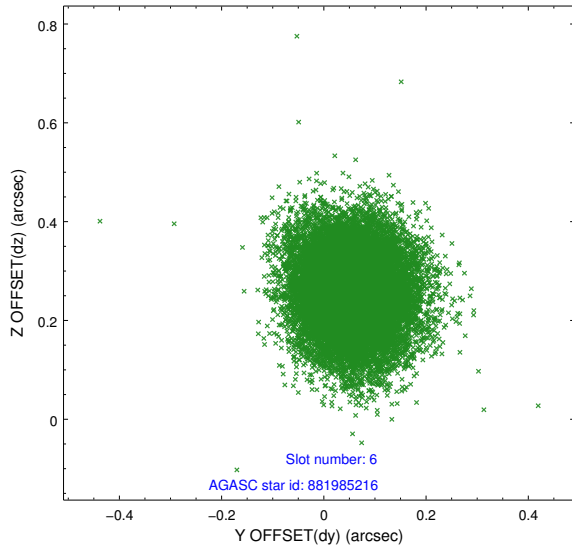
## 2.4.2 Slot 4



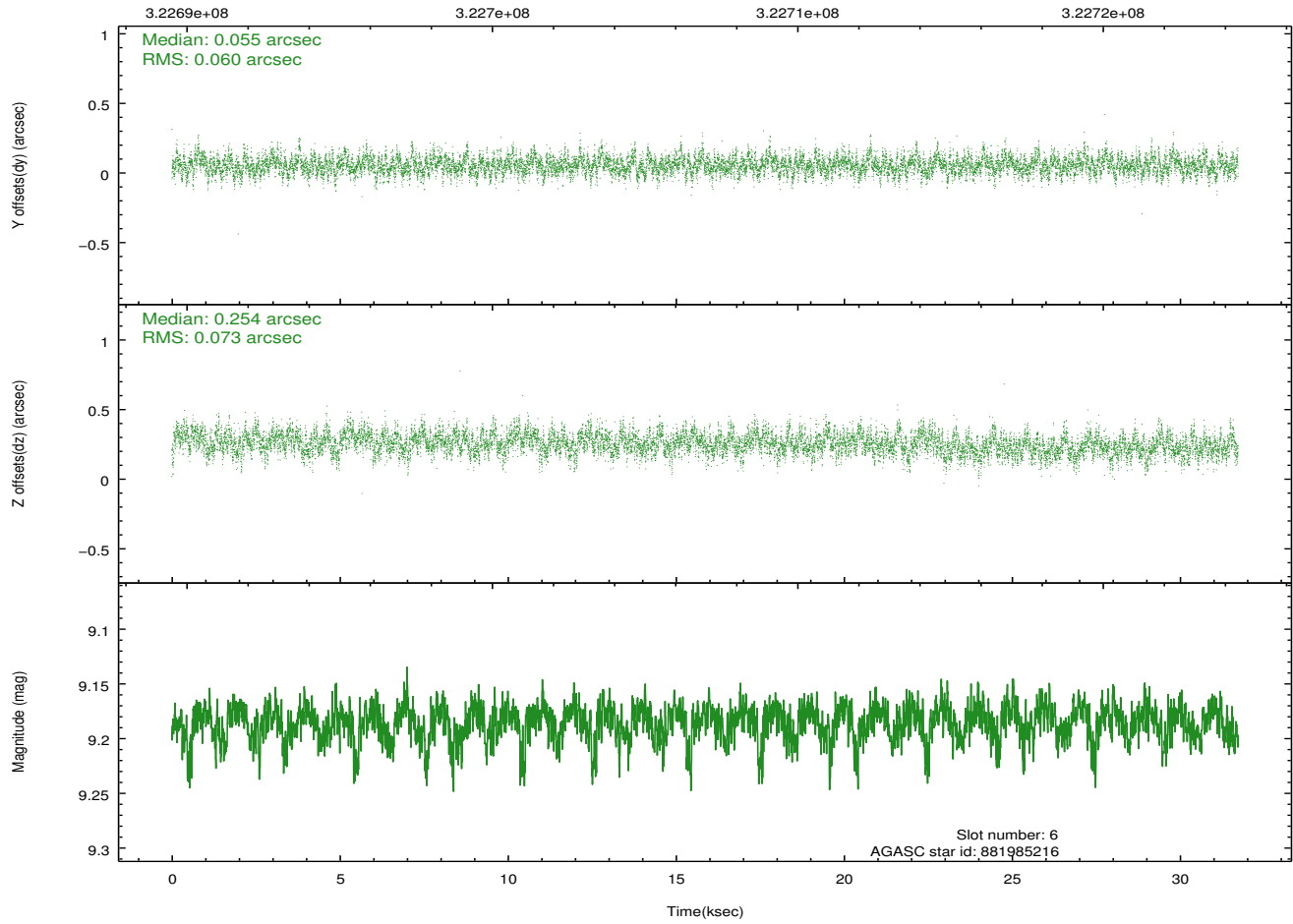
### 2.4.3 Slot 5



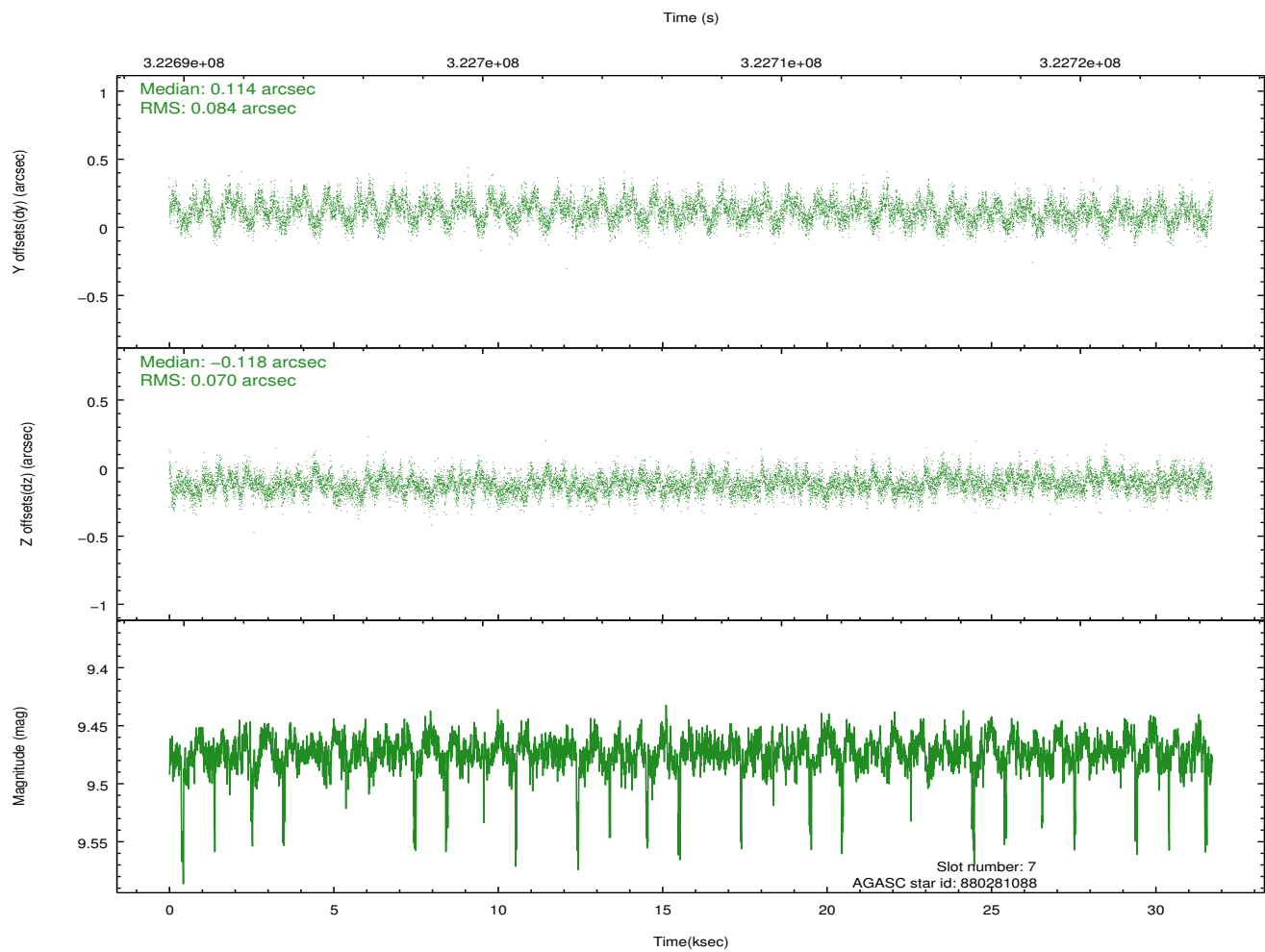
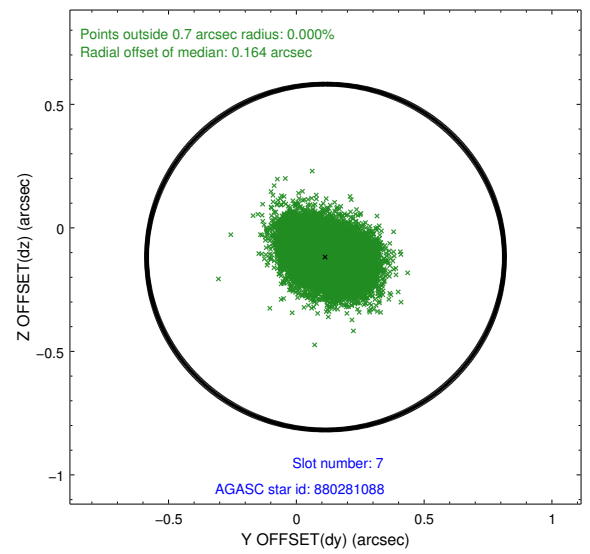
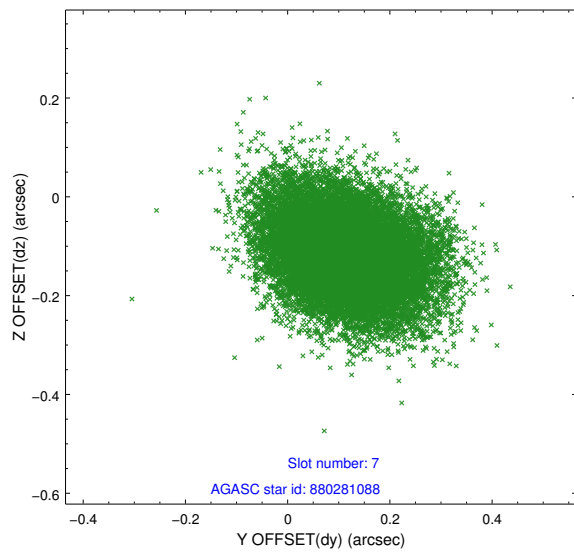
### 2.4.4 Slot 6



Time (s)

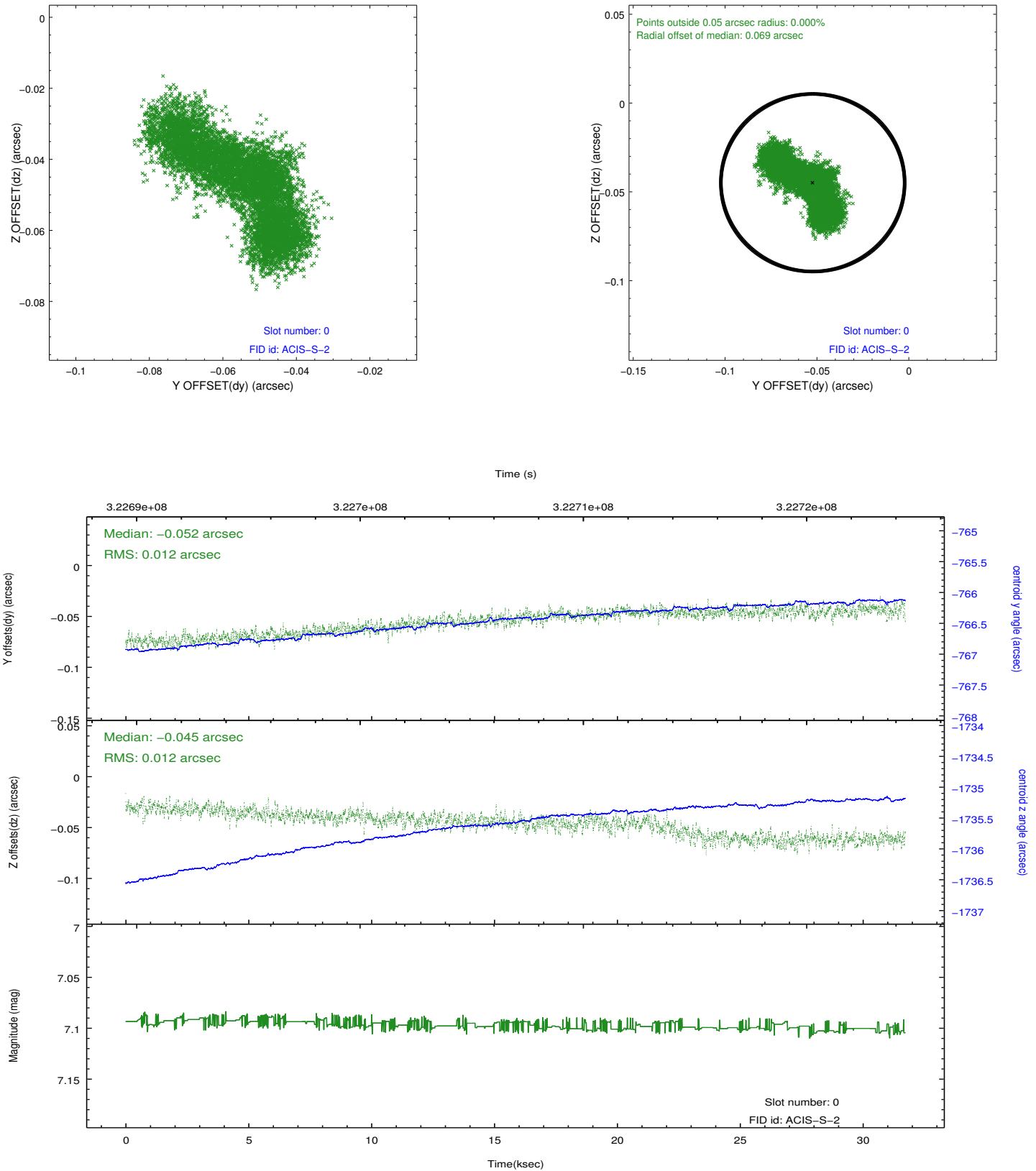


## 2.4.5 Slot 7

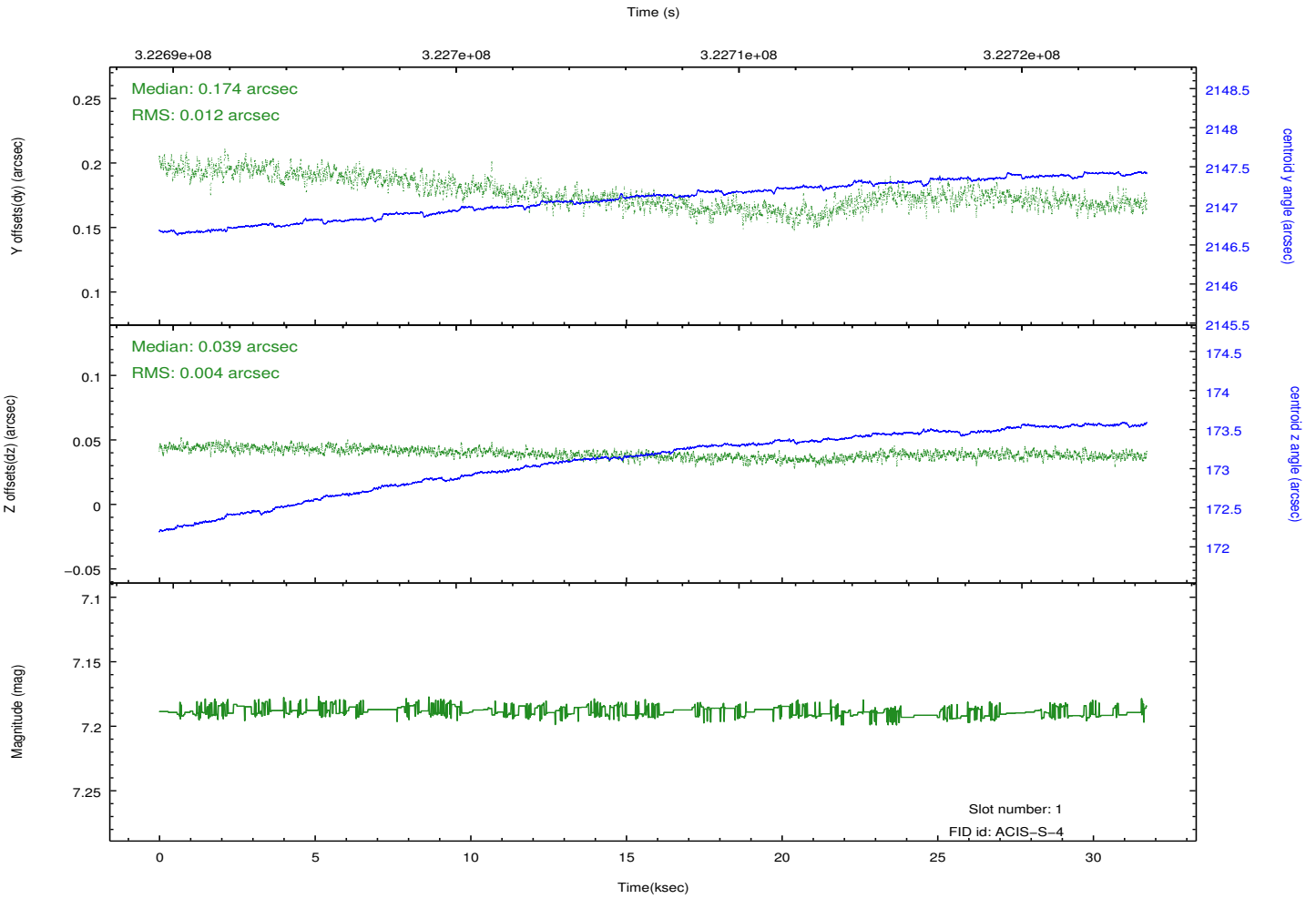
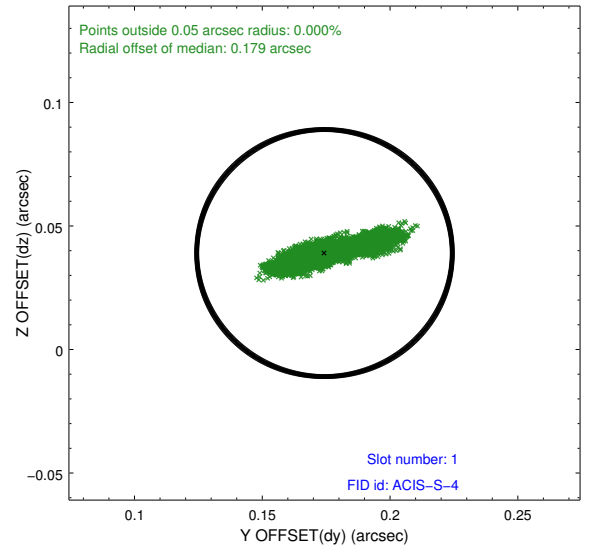
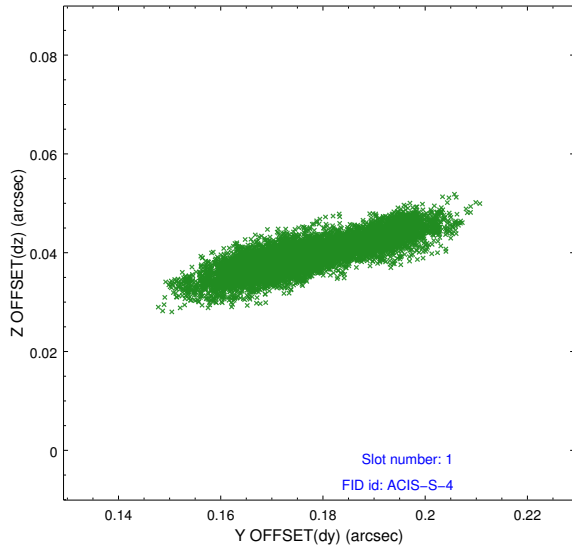


## 2.5 FID Slots

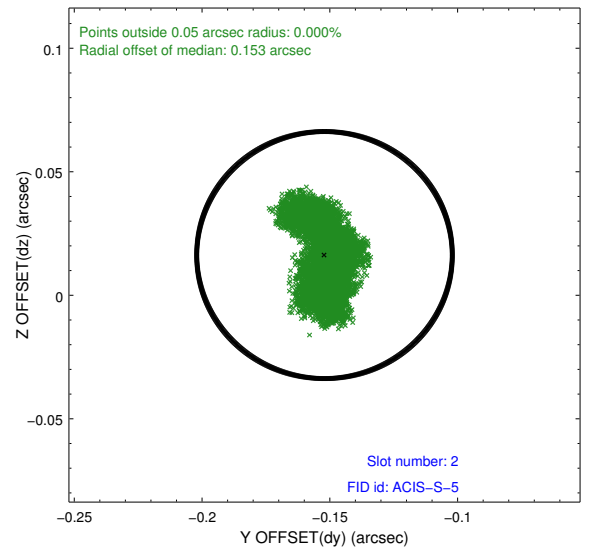
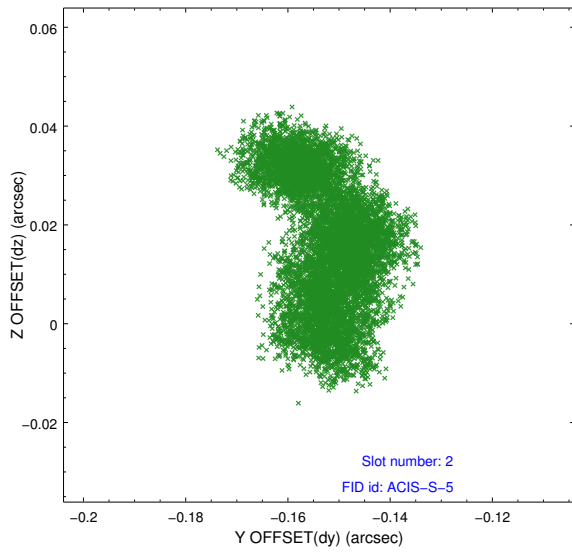
### 2.5.1 Slot 0



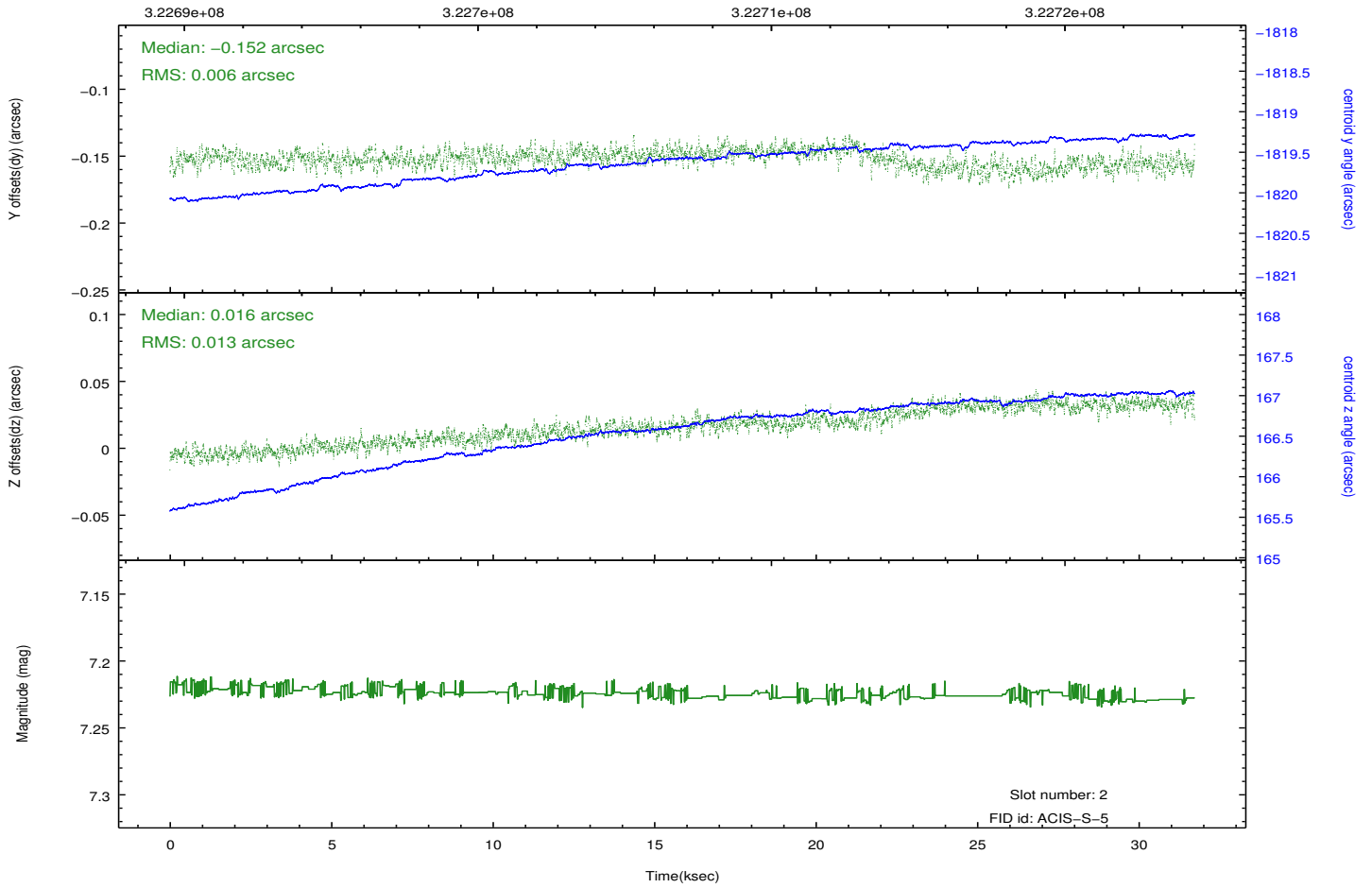
## 2.5.2 Slot 1



### 2.5.3 Slot 2



Time (s)



# A Summary

## A.1 Status

V&V Scientist	Beth Sundheim
V&V Date (YYYY-MM-DD)	2012.05.15
V&V Edition	1
V&V Disposition and Status	OK
V&V Charge Time	31.5983002

## A.2 Comments