

V&V Reference Report

L2 ASCDS Version : 8.4.5

Observation 12232 - L2 Version 2
Chandra X-Ray Center

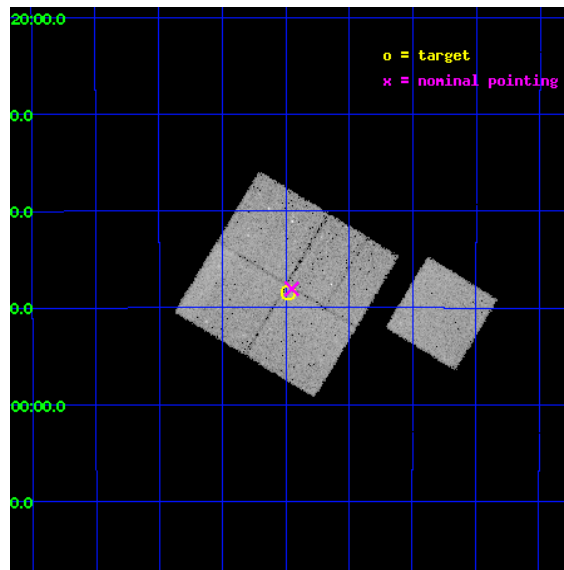
L2 Processing Date : Jun 30 2012

Contents

1	Front	2
2	OBI	3
2.1	OBI	3
2.1.1	Images	3
2.1.2	Bias	3
2.1.3	Parameters	4
2.1.4	Events	4
2.2	Compared Parameters	5
2.3	Aspect	6
2.4	Star Slots	9
2.4.1	Slot 3	9
2.4.2	Slot 4	10
2.4.3	Slot 5	11
2.4.4	Slot 6	12
2.4.5	Slot 7	13
2.5	FID Slots	14
2.5.1	Slot 0	14
2.5.2	Slot 1	15
2.5.3	Slot 2	16
A	Summary	17
A.1	Status	17
A.2	Comments	17

1 Front

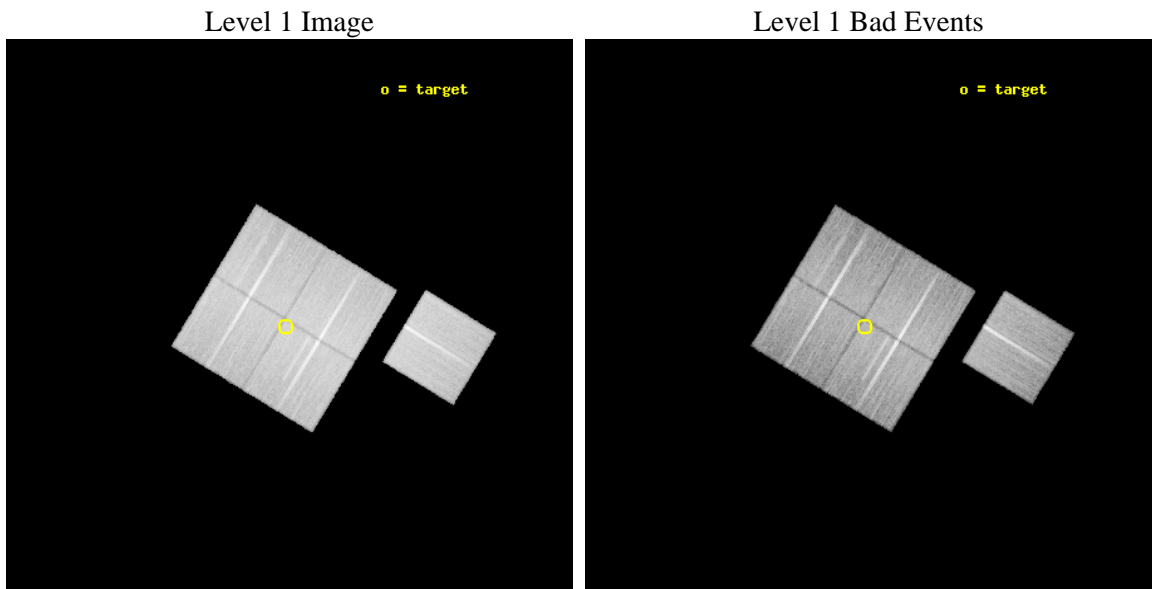
seq_num	900939	Sequence number
obs_id	12232	Observation id
title	The Chandra Deep Field-South Survey: An Ultradeep Chandra Legacy	P
observer	Dr. Harvey Tananbaum	Principal investigator
object	Chandra Deep Field-South	Source name
dtcycle	0	
cycle	P	events from which exps? Prim/Second/Both
ra_targ	53.12	Observer's specified target RA [deg]
dec_targ	-27.806389	Observer's specified target Dec [deg]
ra_nom	53.113175492463	Nominal RA [deg]
dec_nom	-27.801040280481	Nominal Dec [deg]
roll_nom	121.20550677857	Nominal Roll [deg]
revision	2	Processing version of data
ontime	33329.776588917	Sum of GTIs [s]
livetime	32894.298520758	Livetime [s]
ontime0	33335.935399532	Sum of GTIs [s]
ontime1	33335.976439536	Sum of GTIs [s]
ontime2	33332.876489341	Sum of GTIs [s]
ontime3	33329.776588917	Sum of GTIs [s]
ontime6	33329.612408936	Sum of GTIs [s]
l2events	116359	Number of level 2 events



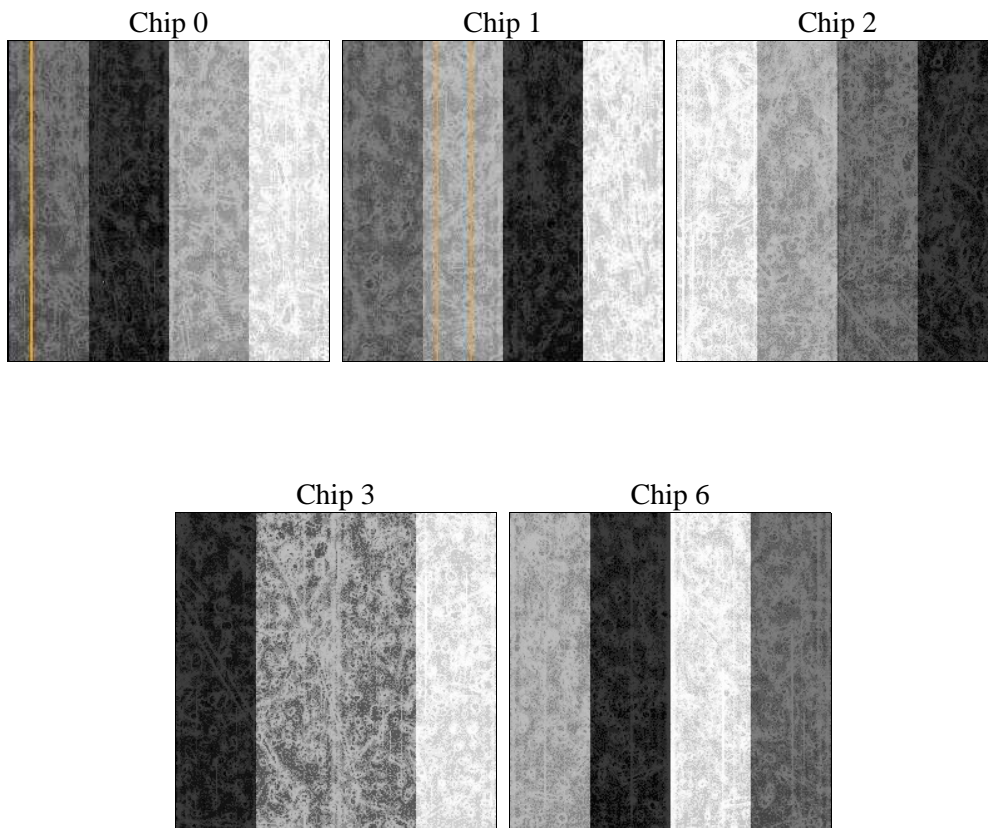
2 OBI

2.1 OBI

2.1.1 Images



2.1.2 Bias



2.1.3 Parameters

obi_num	0	Obi number	sched_exp_time	33288.000000	[s] Scheduled observation exposure time
ascdsver	8.4.5	Processing system revision	ontime	33329.776588917	Sum of GTIs [s]
caldsver	4.5.0	 	ontime0	33335.935399532	Sum of GTIs [s]
date	2012-06-30T14:30:13	Date and time of file creation	ontime1	33335.976439536	Sum of GTIs [s]
revision	2	Processing version of data	ontime2	33332.876489341	Sum of GTIs [s]
			ontime3	33329.776588917	Sum of GTIs [s]
			ontime6	33329.612408936	Sum of GTIs [s]
			l1events	1246388	Number of level 1 events

2.1.4 Events

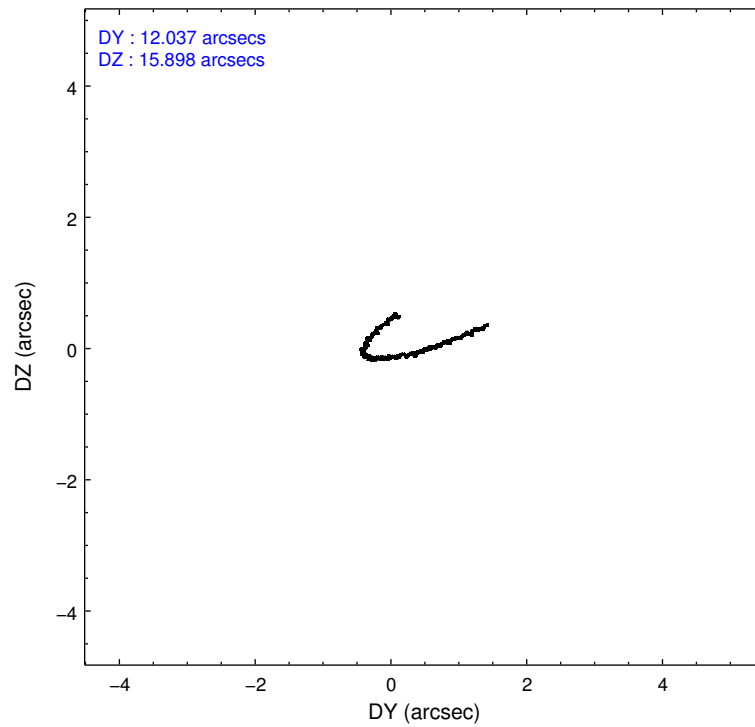
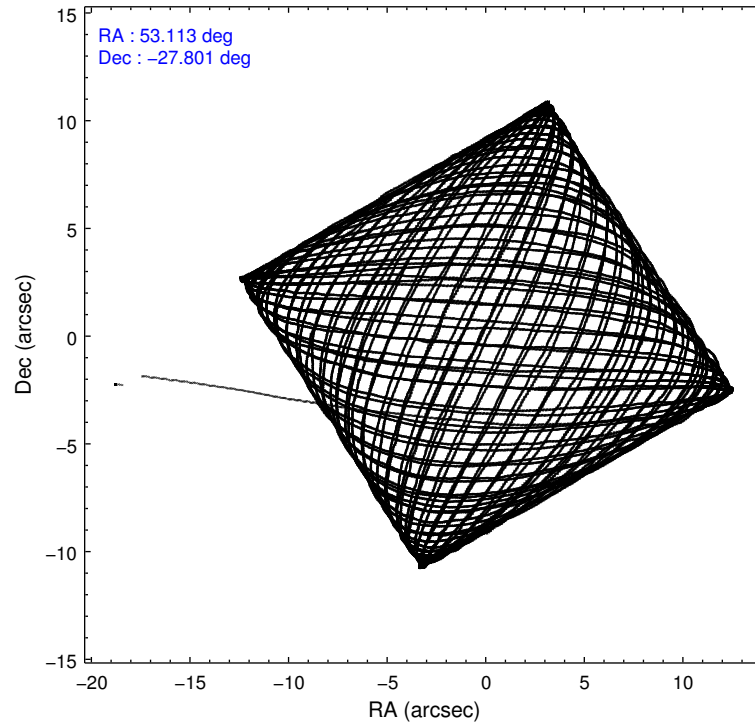
	ccd 0	ccd 1	ccd 2	ccd 3	ccd 6
level 1 events	237775	237179	261374	253524	256536
rejected events	209539	206826	234326	228187	228093
rejected %	88%	87%	89%	90%	88%

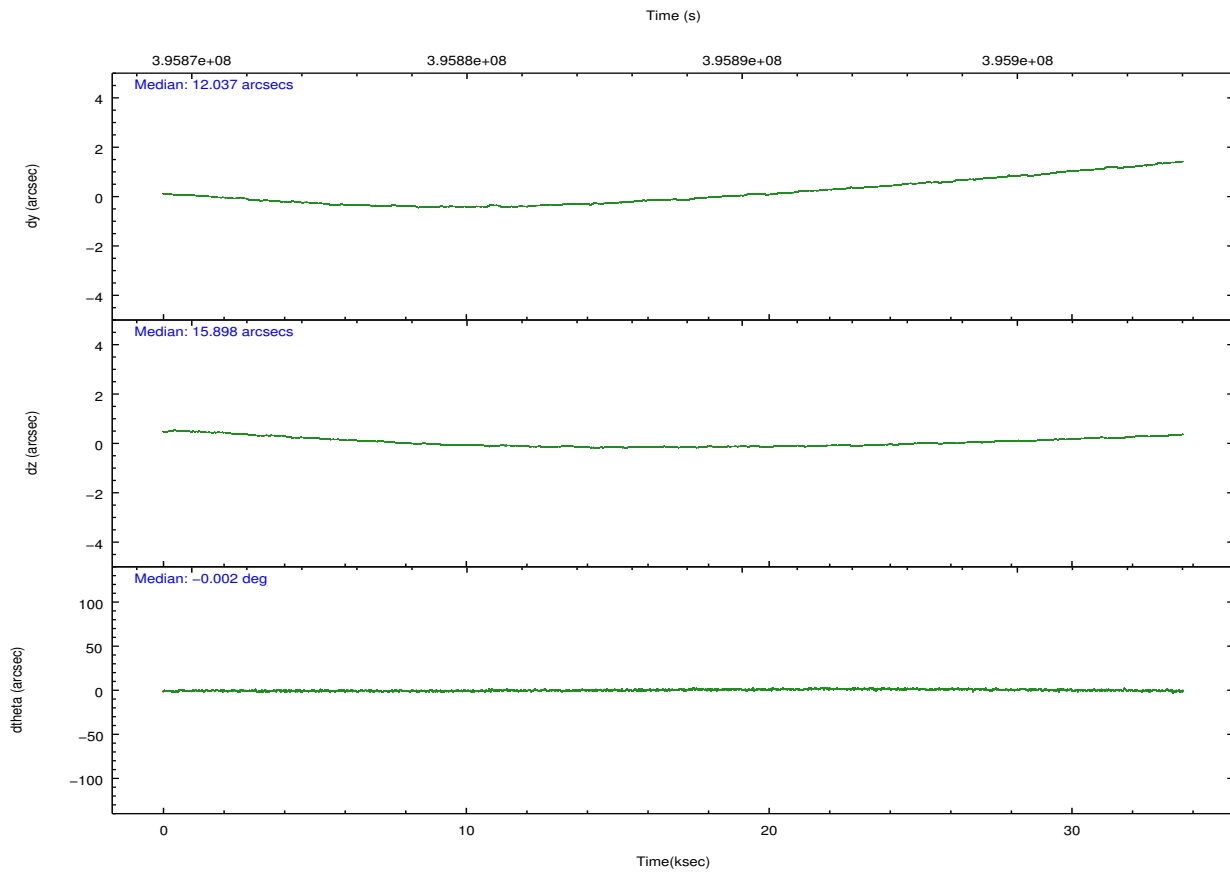
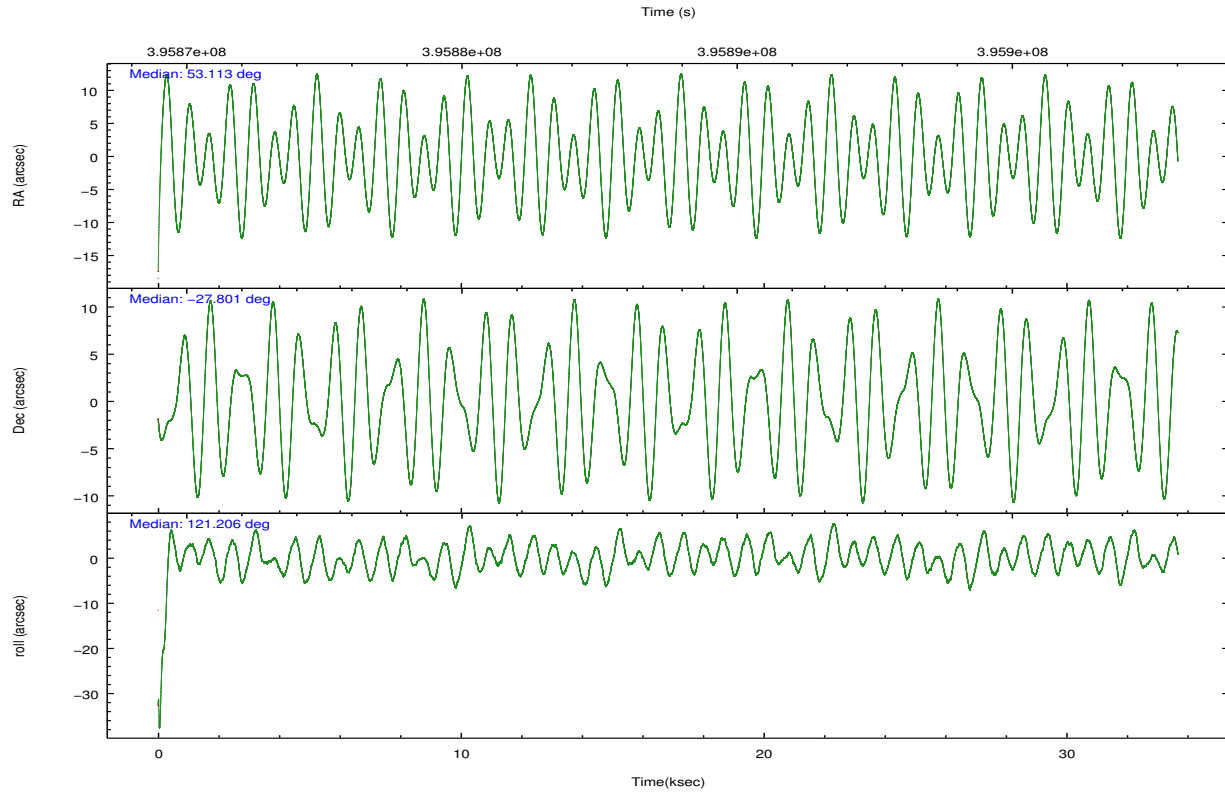
	ccd 0	ccd 1	ccd 2	ccd 3	ccd 6
grade 0 events	9913	10532	9608	8696	9837
	4%	4%	3%	3%	3%
grade 1 events	138	132	155	133	124
	0%	0%	0%	0%	0%
grade 2 events	7048	7121	6773	5705	6410
	2%	3%	2%	2%	2%
grade 3 events	3049	3181	2801	2892	3015
	1%	1%	1%	1%	1%
grade 4 events	2924	3220	2867	2768	2997
	1%	1%	1%	1%	1%
grade 5 events	10339	11059	9536	11529	11445
	4%	4%	3%	4%	4%
grade 6 events	5307	6311	5004	5281	6190
	2%	2%	1%	2%	2%
grade 7 events	199057	195623	224630	216520	216518
	83%	82%	85%	85%	84%

2.2 Compared Parameters

Parameter	Planned	Actual	Parameter	Planned	Actual
Instrument	ACIS	ACIS	Obspar format version number	7	7
Detector	ACIS-01236	ACIS-01236	Obspar file type	PREDICTED	ACTUAL
Grating	NONE	NONE	Obspar update status	NONE	UPDATED
Data mode	VFAINT	VFAINT	CCD I0 on	Y	Y
Observation mode	POINTING	POINTING	CCD I1 on	Y	Y
[deg] Pointing RA	53.140458	53.11317549246257	CCD I2 on	Y	Y
[deg] Pointing Dec	-27.814177	-27.80104028048115	CCD I3 on	Y	Y
[deg] Pointing Roll	121.009548	121.2055067785704	CCD S0 on	N	N
[mm] SIM focus pos	-0.782348	-0.7809083437167272	CCD S1 on	N	N
[mm] SIM defocus	0	0.001439871863259334	CCD S2 on	O1	Y
[mm] SIM translation stage pos	-233.592463	-233.5874344608287	CCD S3 on	N	N
[mm] SIM translation stage offset	0	-0.005018542100998502	CCD S4 on	N	N
[s] Observation start time (MET)	395871032.184000	395870004.80977	CCD S5 on	N	N
Observation start date	2010-07-18T20:09:26	2010-07-18T19:53:24	Number of optional ACIS chips dropped	0	0
[s] Observation end time (MET)	395904320.184000	395904868.13656	On-chip summing requested	N	N
Observation end date	2010-07-19T05:24:14	2010-07-19T05:34:28	Subarray requested	NONE	NONE
Read mode	TIMED	TIMED	Alternating exposures requested	N	N
			[s] Primary exposure time	0.000000	3.1

2.3 Aspect



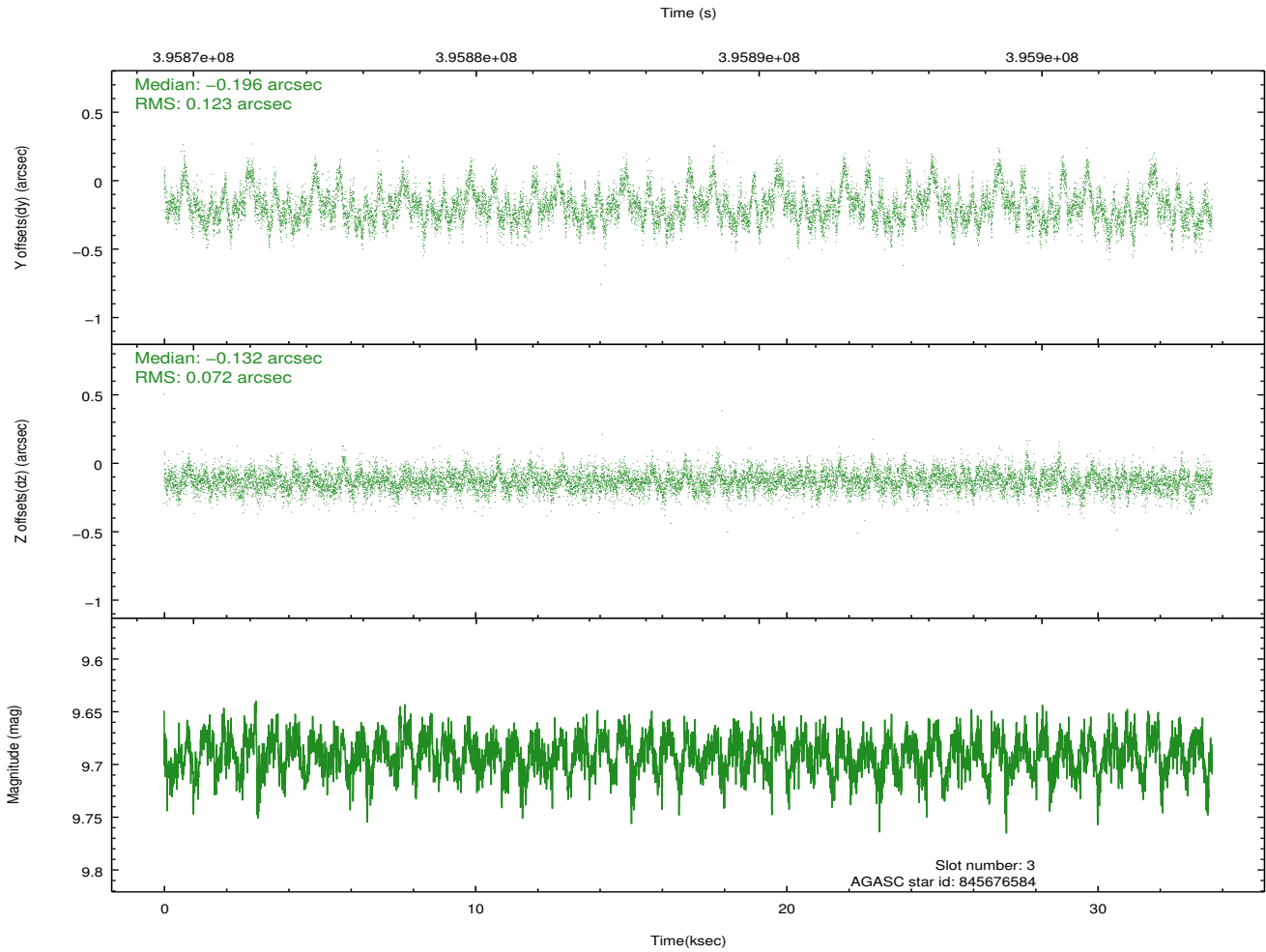
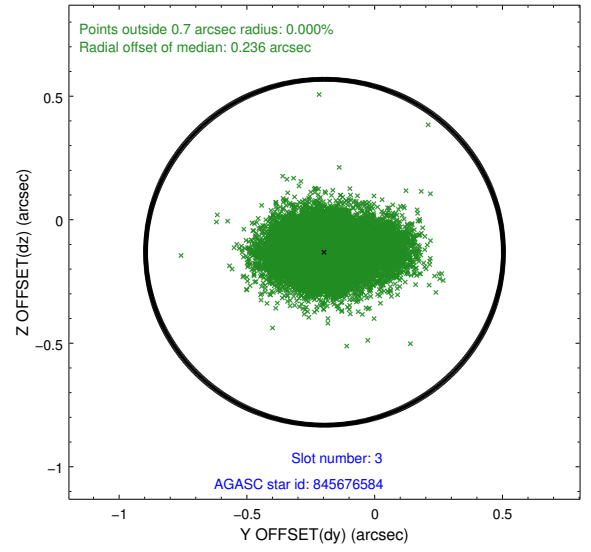
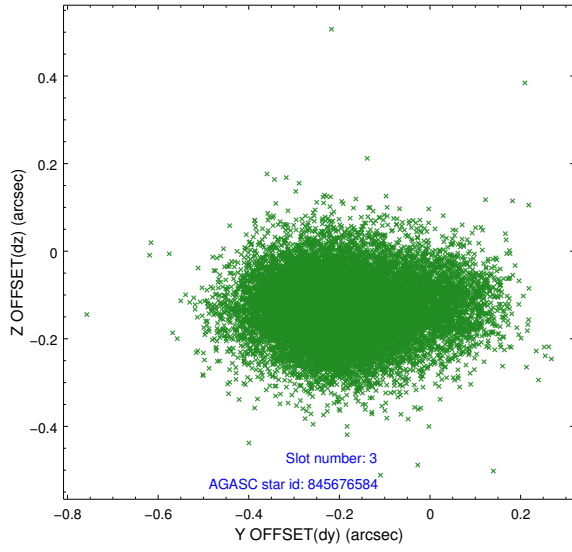


Slot Statistics

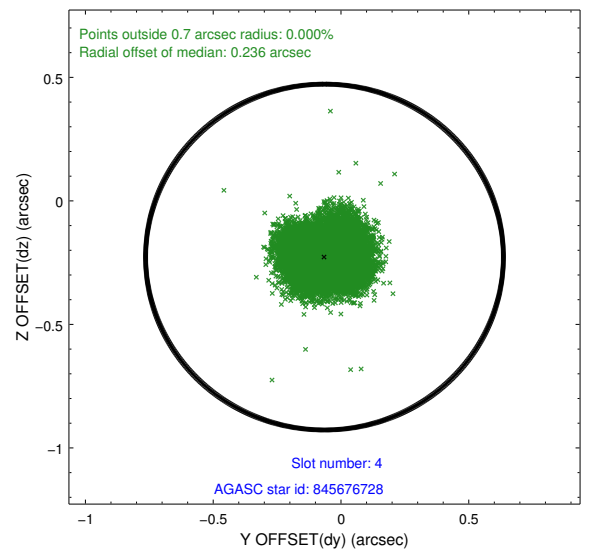
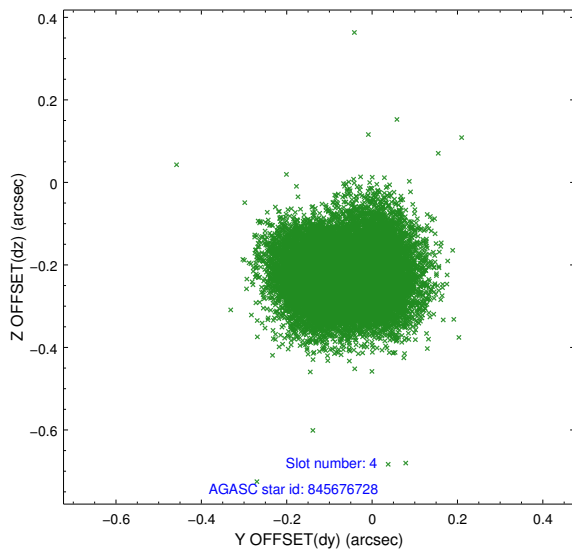
slot	status	id	mag	n_pts	med_dy	med_dz	dr1	dr2	ra	dec	mean_y	mean_z
0	FID	ACIS-I-1	7.01	8214	-0.083	-0.055	0.014	0.023	0.000000	0.000000	927.25	-839.64
1	FID	ACIS-I-4	6.93	8212	0.056	0.088	0.019	0.026	0.000000	0.000000	2147.46	1060.28
2	FID	ACIS-I-6	7.01	8214	-0.069	0.031	0.015	0.025	0.000000	0.000000	393.24	1702.47
3	GUIDE	845676584	9.69	16412	-0.196	-0.132	0.147	0.261	52.264247	-27.542890	2269.56	1899.27
4	GUIDE	845676728	9.33	16415	-0.065	-0.227	0.114	0.176	52.877179	-27.664318	894.43	442.12
5	GUIDE	845676936	9.50	16378	-0.159	0.004	0.156	0.235	52.843773	-27.880153	281.89	931.98
6	GUIDE	845807880	8.80	16417	0.146	0.107	0.082	0.130	53.382027	-27.886093	-618.12	-524.65
7	GUIDE	845813656	10.18	16366	0.264	0.229	0.170	0.266	53.922767	-28.083703	-2118.02	-1625.40

2.4 Star Slots

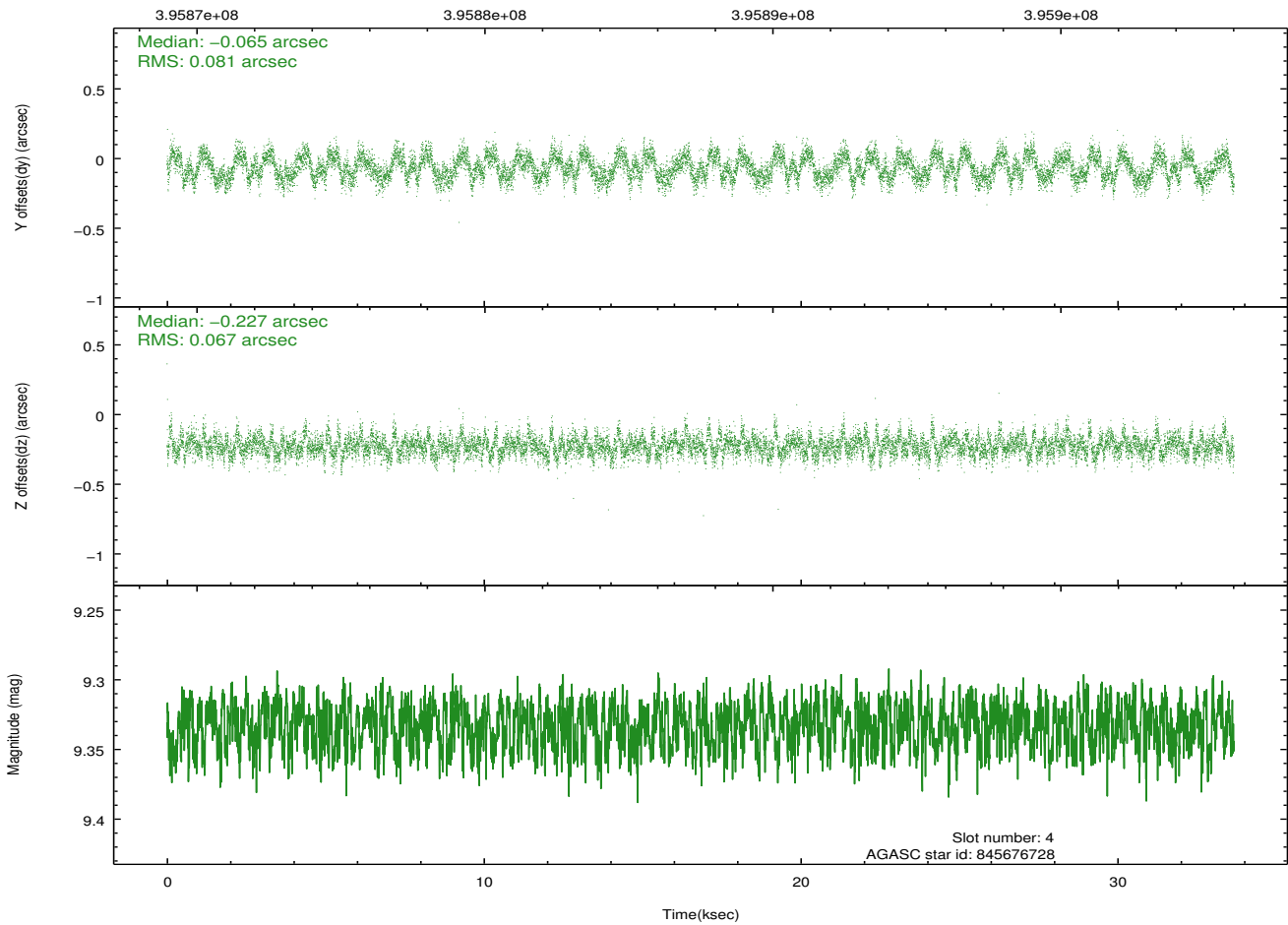
2.4.1 Slot 3



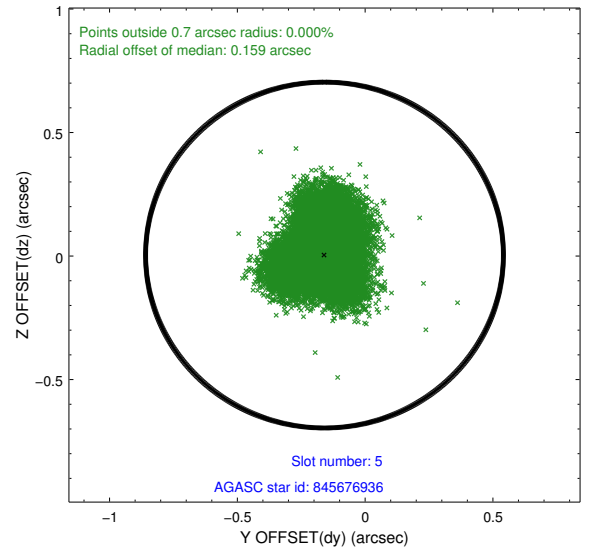
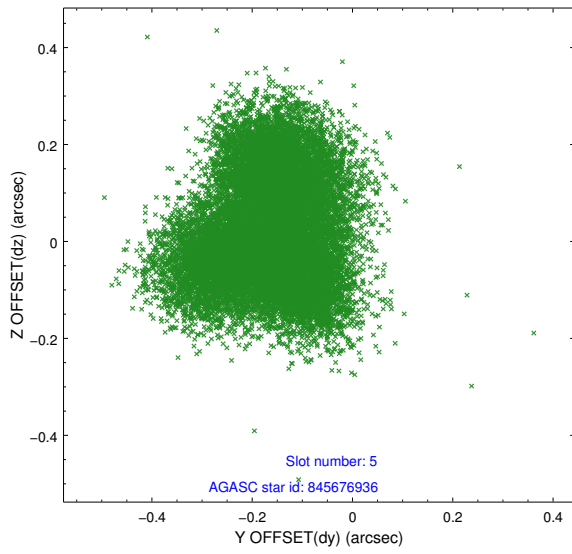
2.4.2 Slot 4



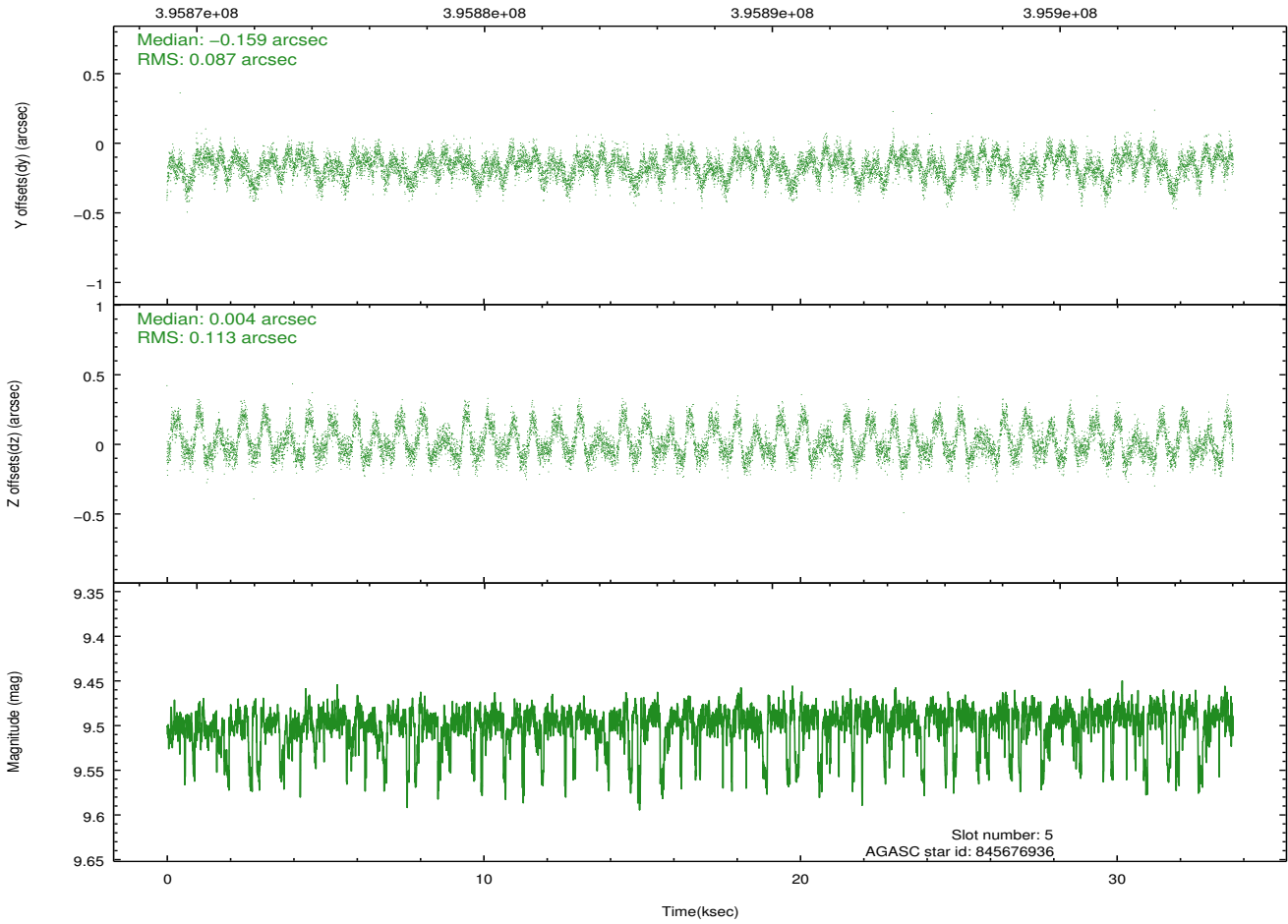
Time (s)



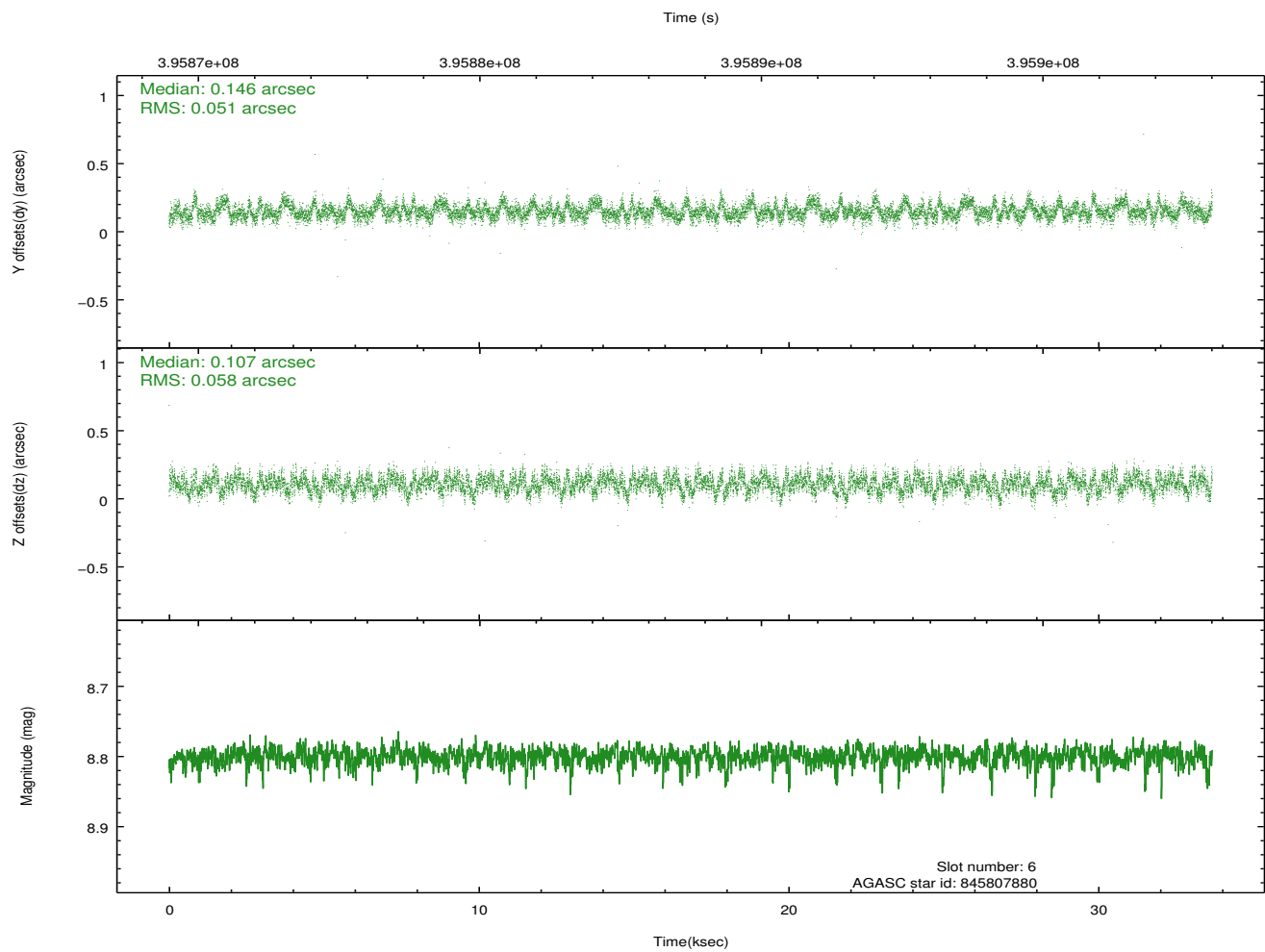
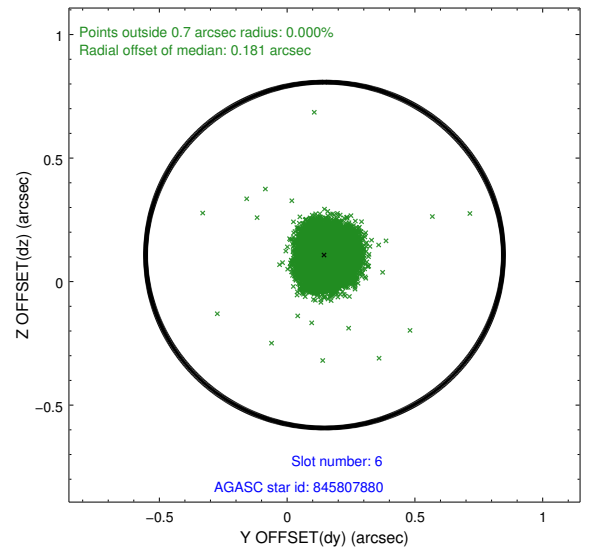
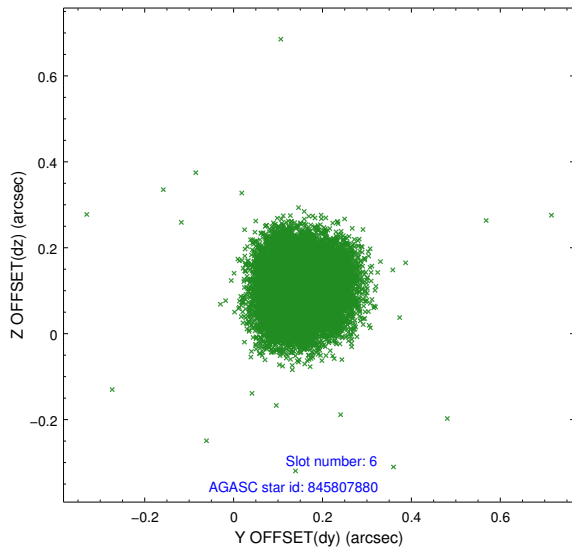
2.4.3 Slot 5



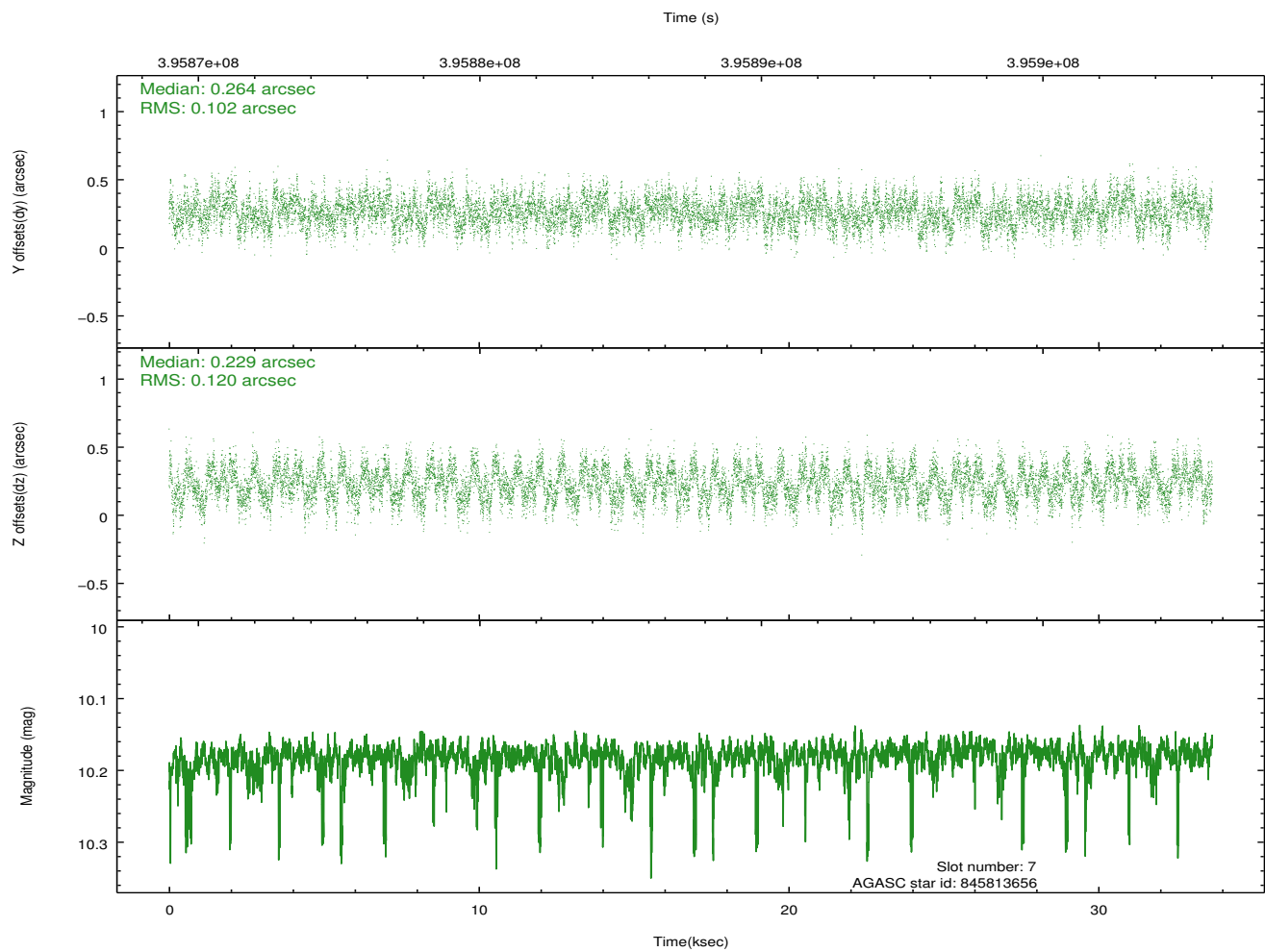
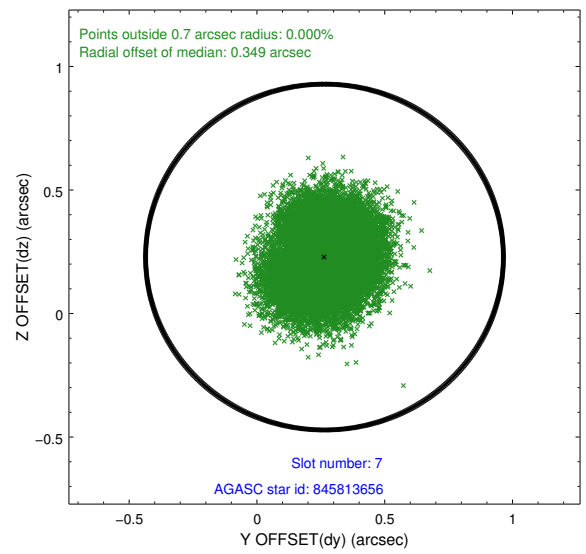
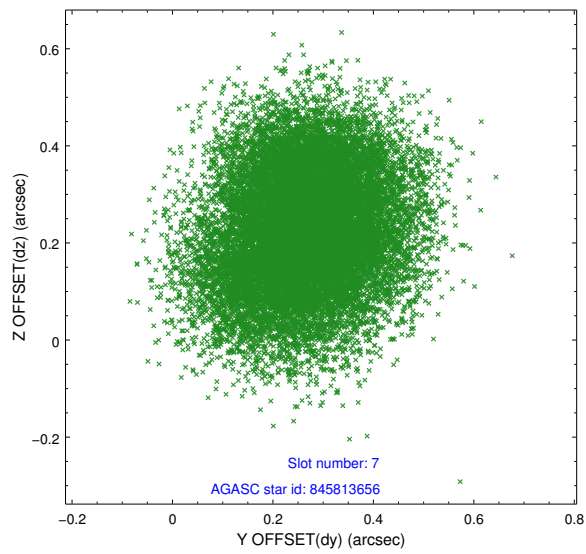
Time (s)



2.4.4 Slot 6

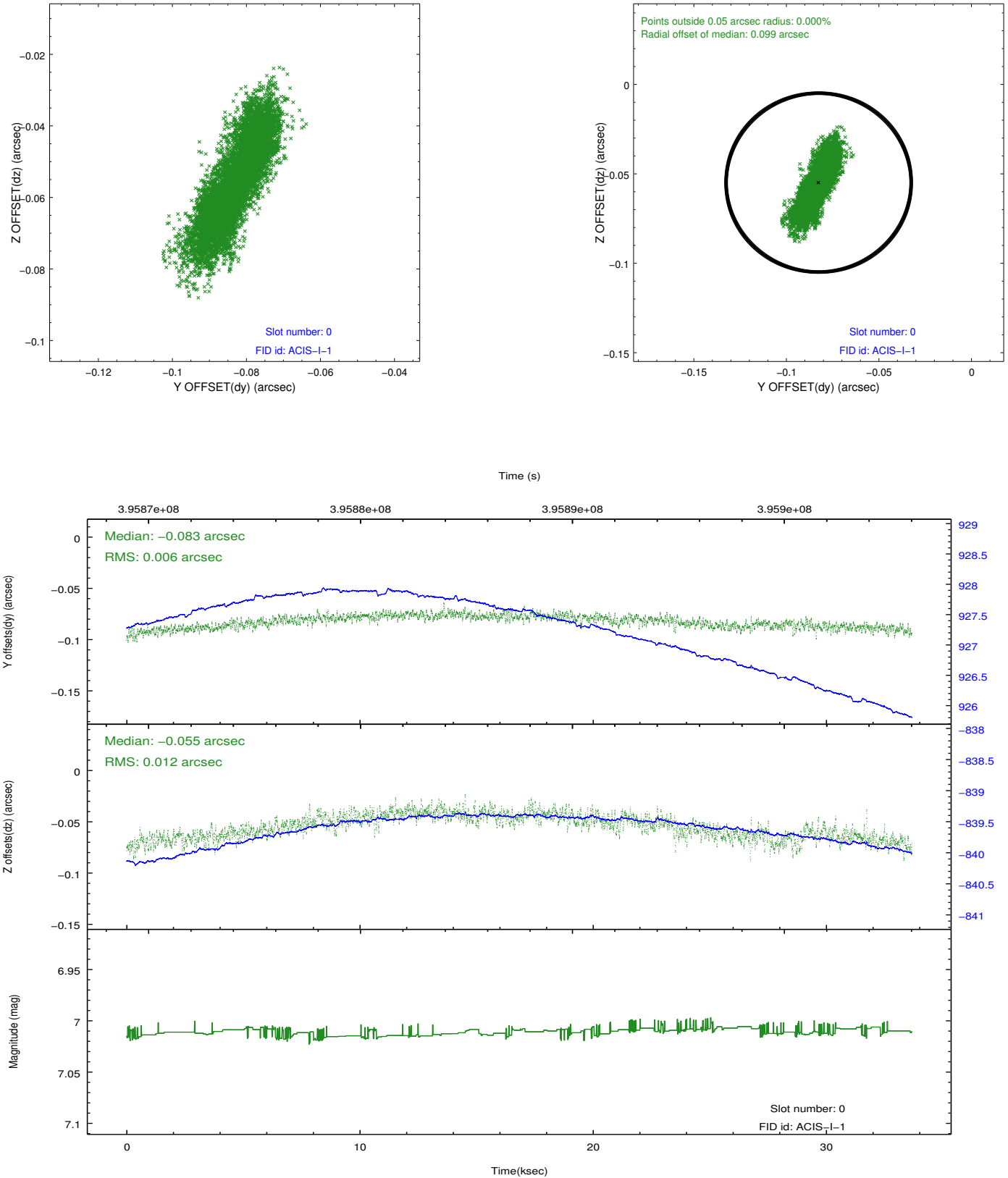


2.4.5 Slot 7

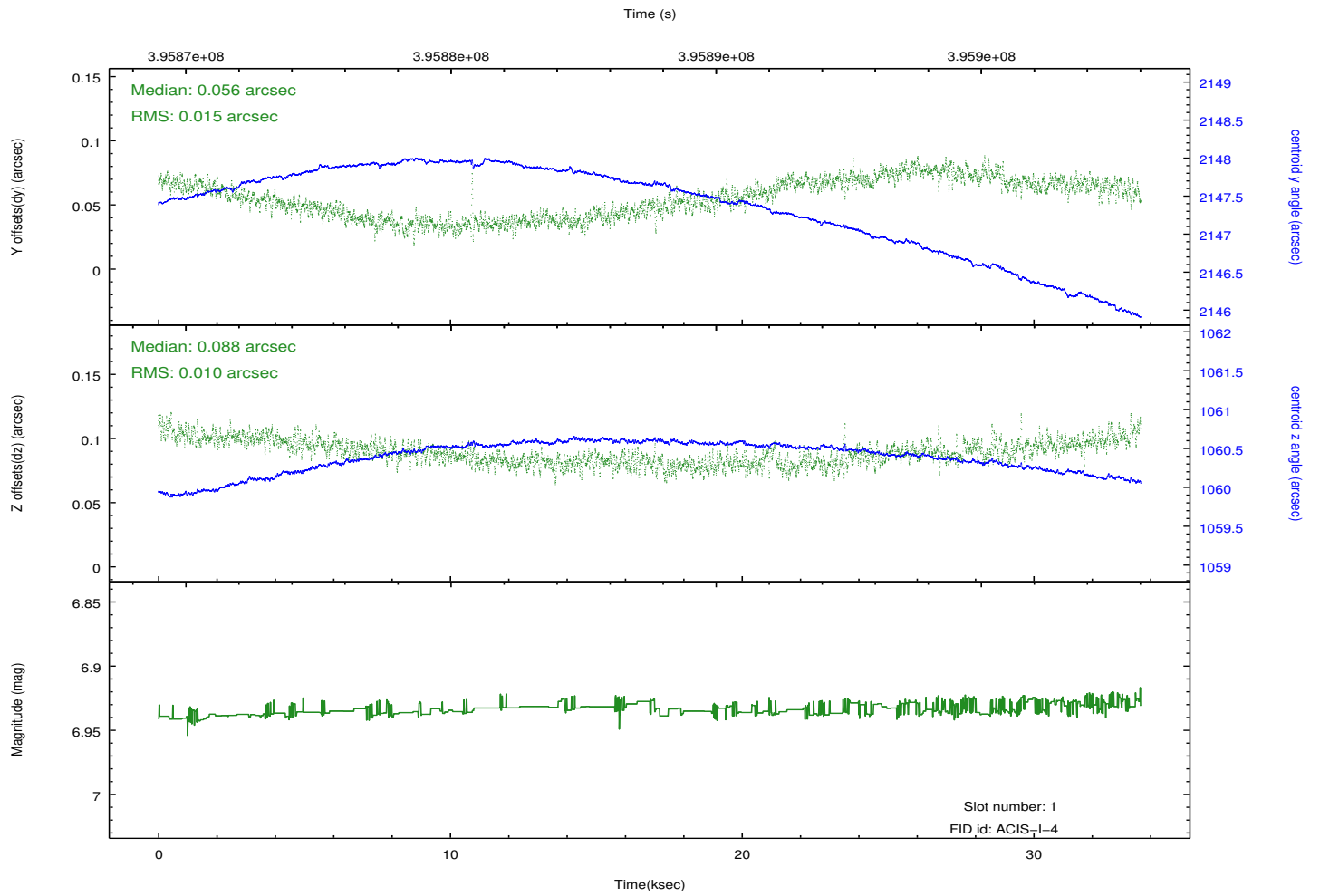
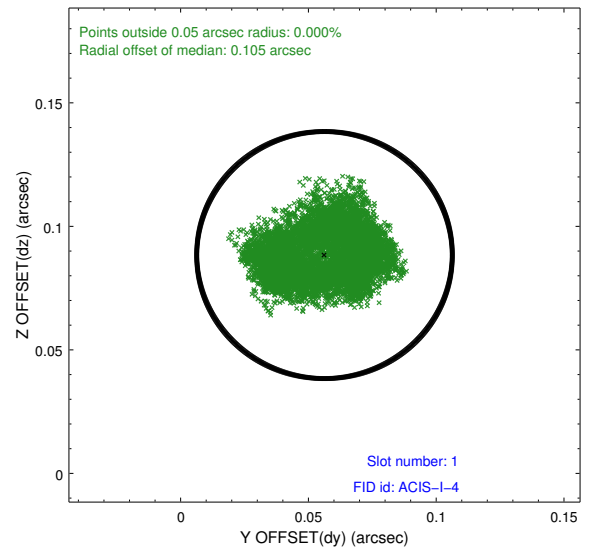
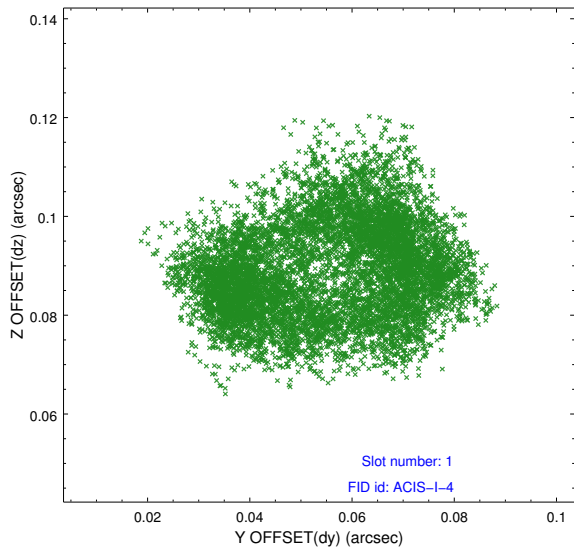


2.5 FID Slots

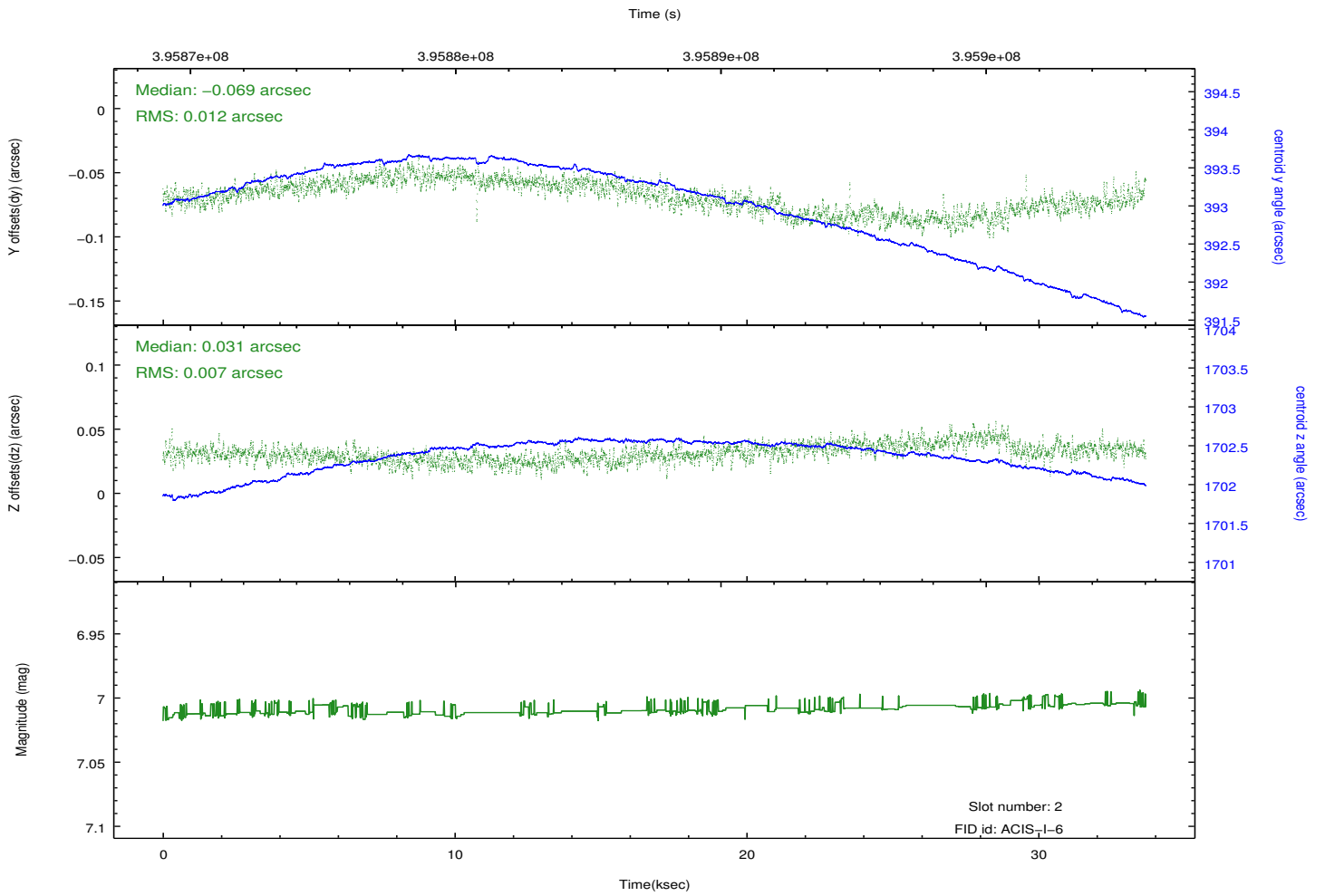
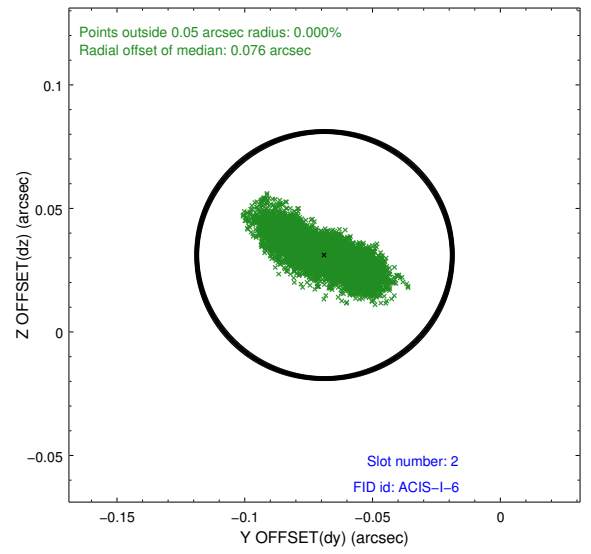
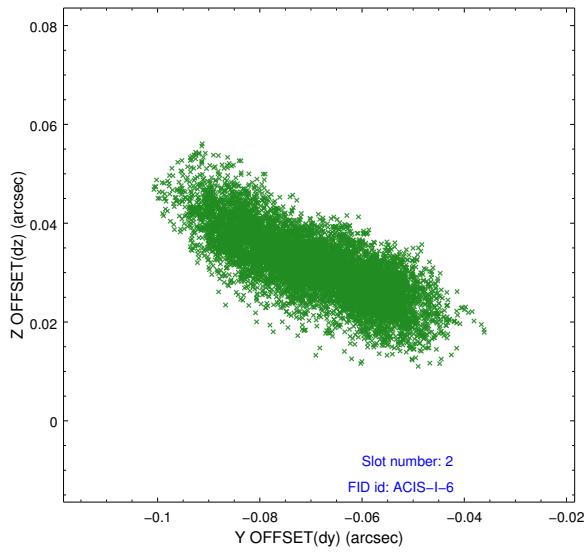
2.5.1 Slot 0



2.5.2 Slot 1



2.5.3 Slot 2



A Summary

A.1 Status

V&V Scientist	Jen Lauer
V&V Date (YYYY-MM-DD)	2012.07.09
V&V Edition	1
V&V Disposition and Status	OK
V&V Charge Time	33.329776589274

A.2 Comments