

V&V Reference Report

L2 ASCDS Version : 10.5.2

Observation 19948 - L2 Version 1
Chandra X-Ray Center

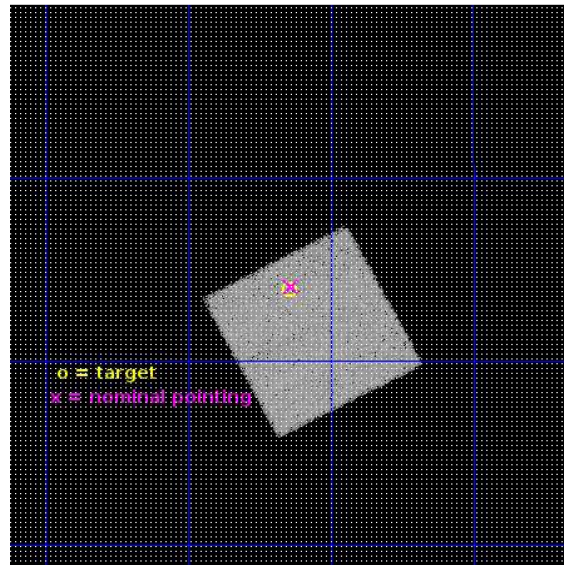
L2 Processing Date : Dec 1 2016

Contents

1	Front	2
2	OBI	3
2.1	OBI	3
2.1.1	Images	3
2.1.2	Bias	3
2.1.3	Parameters	4
2.1.4	Events	4
2.2	Compared Parameters	5
2.3	Aspect	6
2.4	Star Slots	9
2.4.1	Slot 3	9
2.4.2	Slot 4	10
2.4.3	Slot 5	11
2.4.4	Slot 6	12
2.4.5	Slot 7	13
2.5	FID Slots	14
2.5.1	Slot 0	14
2.5.2	Slot 1	15
2.5.3	Slot 2	16
A	Summary	17
A.1	Status	17
A.2	Comments	17

1 Front

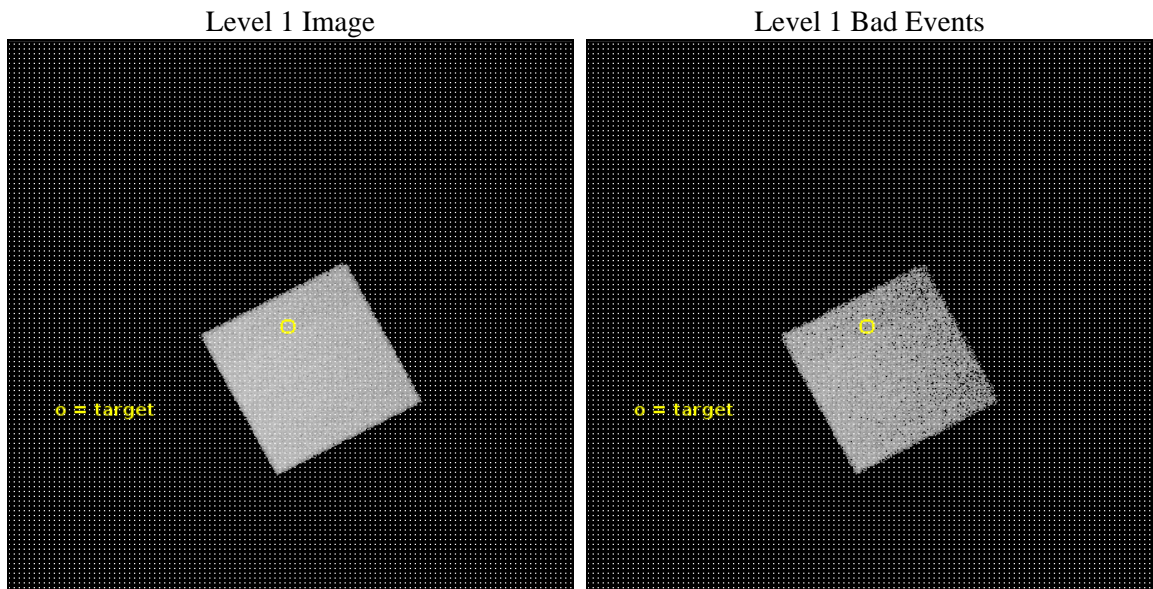
seq_num	300339	Sequence number
obs_id	19948	Observation id
title	Locating the shocks in nova remnants	Proposal title
observer	Dr Thomas Nelson	Principal investigator
object	V959 Mon	Source name
dtcycle	0	
cycle	P	events from which exps? Prim/Second/Both
ra_targ	99.91125	Observer's specified target RA [deg]
dec_targ	5.897778	Observer's specified target Dec [deg]
ra_nom	99.909399475979	Nominal RA [deg]
dec_nom	5.9007876797653	Nominal Dec [deg]
roll_nom	62.156824342901	Nominal Roll [deg]
revision	1	Processing version of data
ontime	22092.0	Sum of GTIs [s]
livetime	21793.859995265	Livetime [s]
ontime7	22092.0	Sum of GTIs [s]
l2events	81967	Number of level 2 events



2 OBI

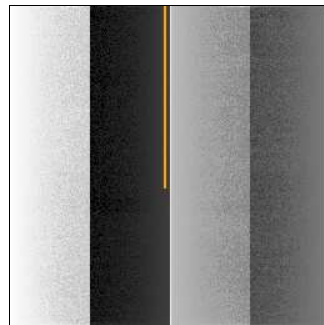
2.1 OBI

2.1.1 Images



2.1.2 Bias

Chip 7



2.1.3 Parameters

obi_num	0	Obi number	sched_exp_time	22000.000000	[s] Scheduled observation exposure time
ascdsver	10.5.2	Processing system revision	ontime	22092.0	Sum of GTIs [s]
caldbver	4.7.2	 	ontime7	22092.0	Sum of GTIs [s]
date	2016-12-01T19:56:59	Date and time of file creation	l1events	190137	Number of level 1 events
revision	1	Processing version of data			

2.1.4 Events

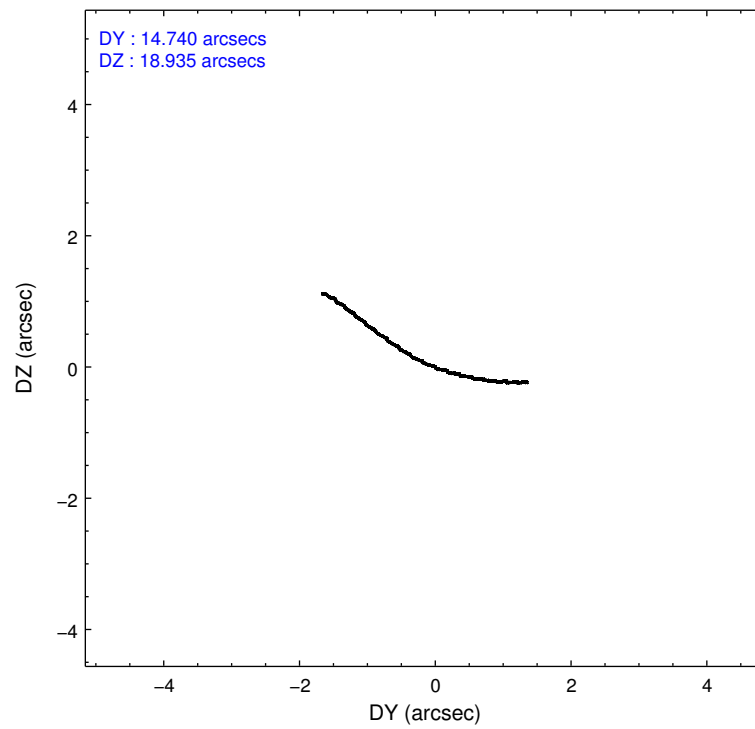
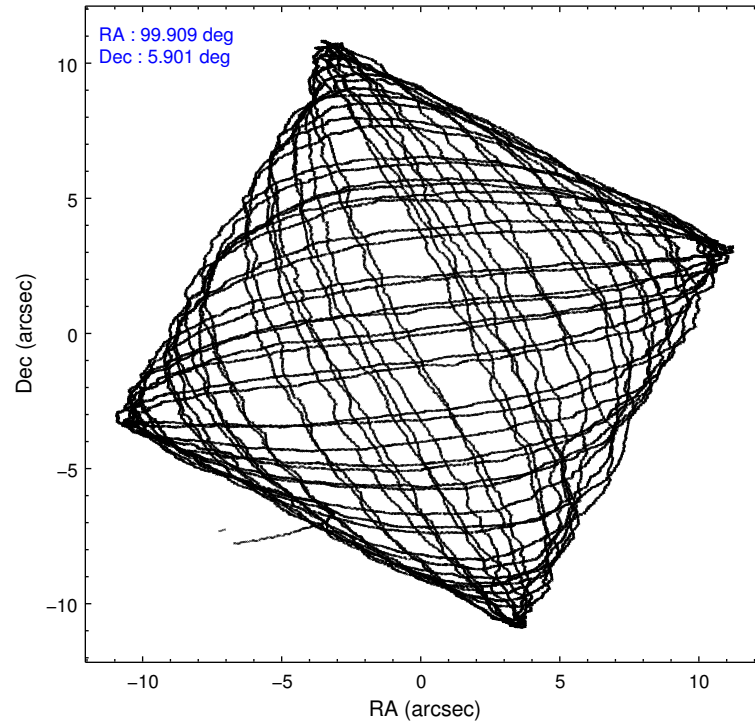
	ccd 7
level 1 events	190137
rejected events	105989
rejected %	55%

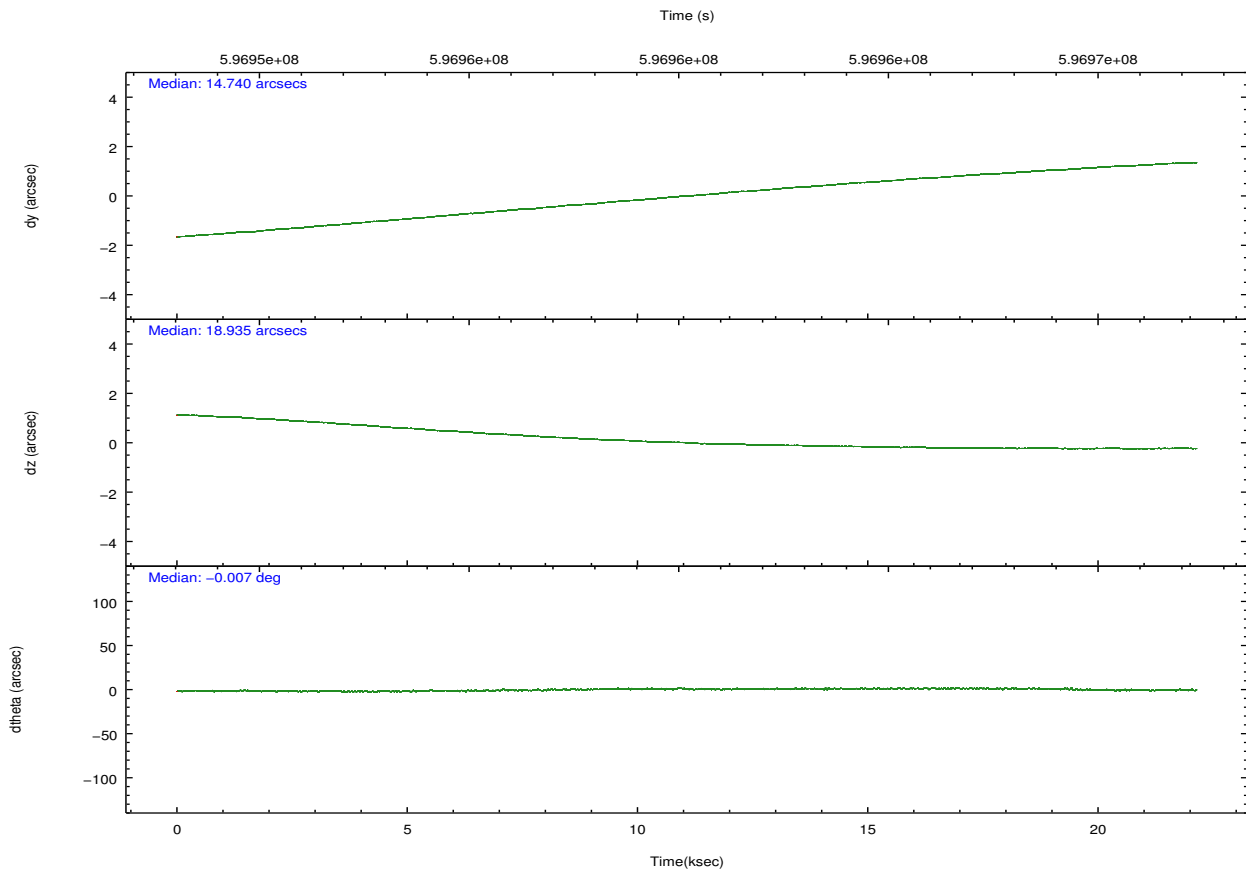
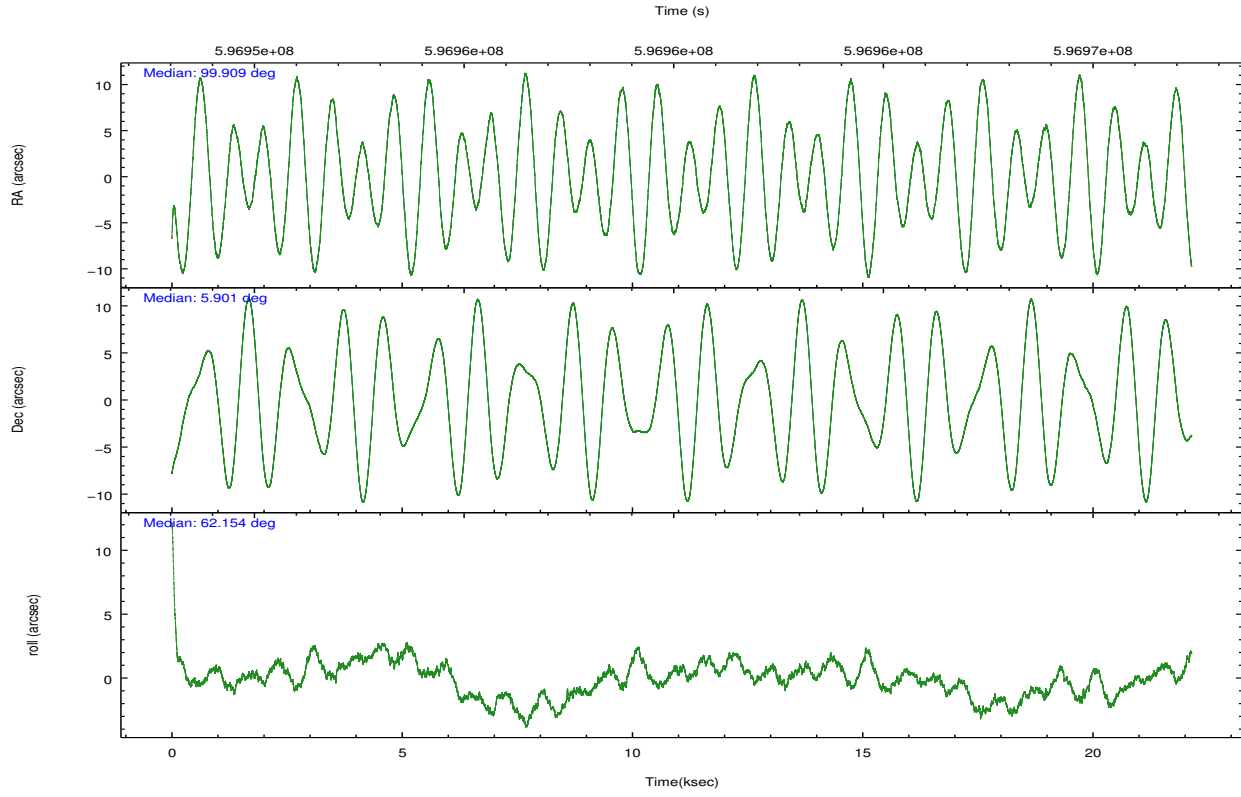
	ccd 7
grade 0 events	7349
	3%
grade 1 events	242
	0%
grade 2 events	17887
	9%
grade 3 events	6869
	3%
grade 4 events	6875
	3%
grade 5 events	19119
	10%
grade 6 events	45185
	23%
grade 7 events	86611
	45%

2.2 Compared Parameters

Parameter	Planned	Actual	Parameter	Planned	Actual
Instrument	ACIS	ACIS	Obspar format version number	7	7
Detector	ACIS-7	ACIS-7	Obspar file type	PREDICTED	ACTUAL
Grating	NONE	NONE	Obspar update status	NONE	UPDATED
Data mode	VFAINT	VFAINT	Number of optional ACIS chips dropped	0	0
Observation mode	POINTING	POINTING	On-chip summing requested	N	N
[deg] Pointing RA	99.910821	99.90939947597937	Subarray requested	NONE	NONE
[deg] Pointing Dec	5.873381	5.900787679765293	Alternating exposures requested	N	N
[deg] Pointing Roll	62.000047	62.15682434290127	[s] Primary exposure time	0.000000	3
[mm] SIM focus pos	-0.684267	-0.6828225247311905			
[mm] SIM defocus	0	0.001444936568705701			
[mm] SIM translation stage pos	-190.132523	-190.1425803651734			
[mm] SIM translation stage offset	0	0.01005778216563158			
[s] Observation start time (MET)	596949260.184000	596947979.99661			
Observation start date	2016-12-01T03:13:12	2016-12-01T02:52:59			
[s] Observation end time (MET)	596971260.184000	596972224.83551			
Observation end date	2016-12-01T09:19:52	2016-12-01T09:37:04			
Read mode	TIMED	TIMED			

2.3 Aspect





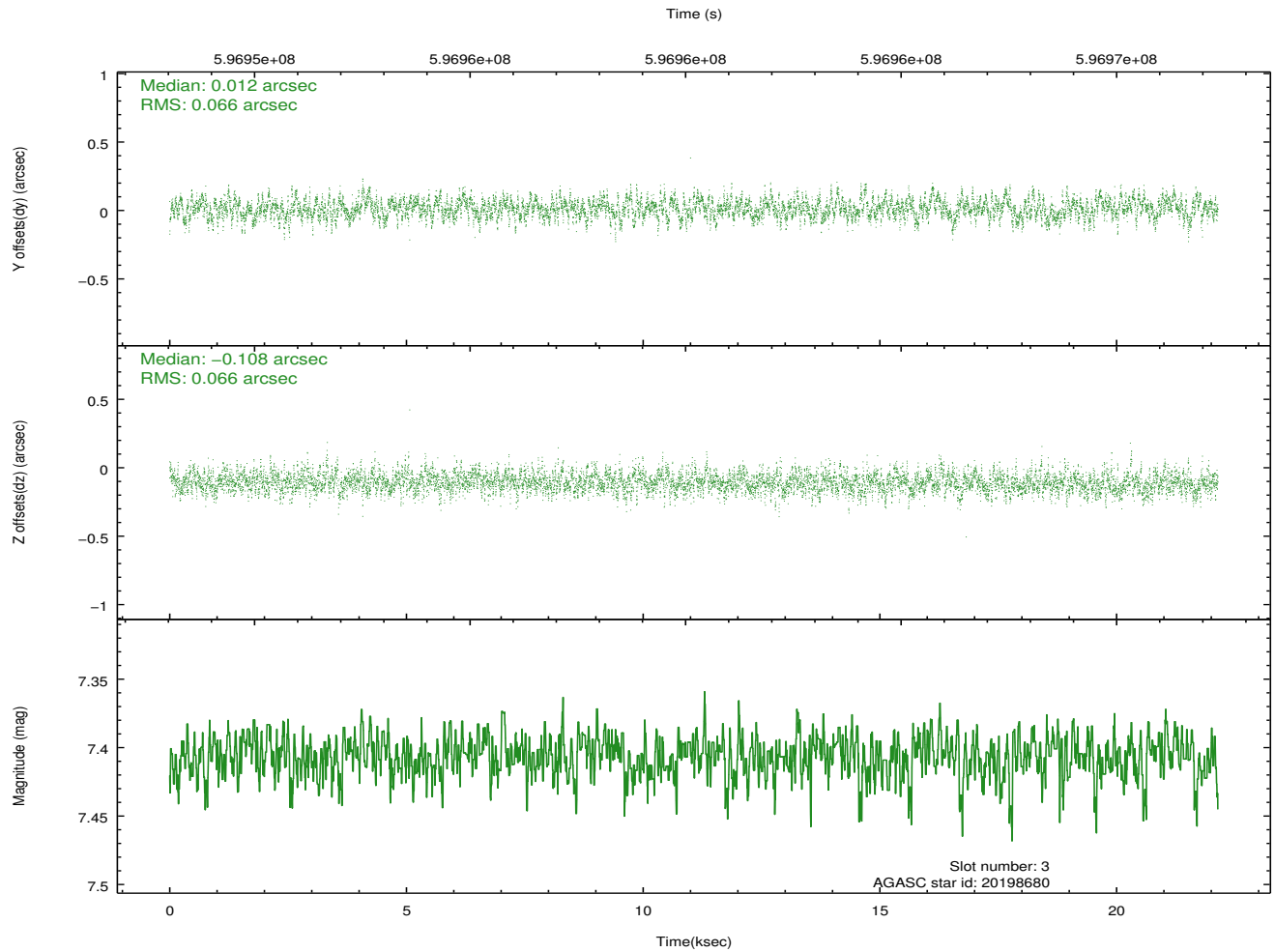
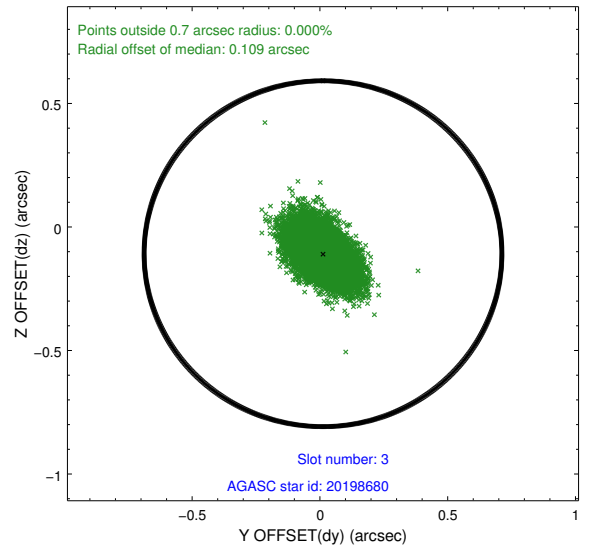
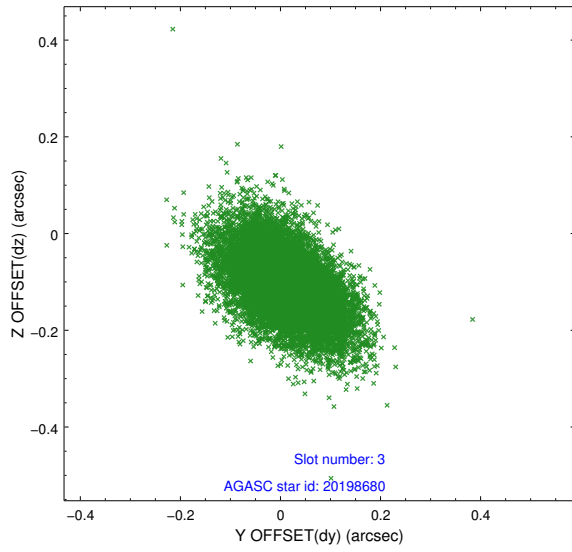
Slot Statistics

slot	status	used	id	mag	n_pts	med_dy	med_dz	dr1	dr2	ra	dec	mean_y	mean_z
0	FID		ACIS-S-1	7.06	5401	0.110	-0.017	0.016	0.043	0.000000	0.000000	928.56	-1736.18
1	FID		ACIS-S-5	7.08	5401	-0.261	0.058	0.011	0.019	0.000000	0.000000	-1820.78	161.21
2	FID		ACIS-S-6	7.20	5401	0.132	-0.032	0.016	0.050	0.000000	0.000000	393.89	805.33
3	GUIDE	used	20198680	7.41	10801	0.012	-0.108	0.097	0.165	99.264537	5.519391	-2211.17	1447.40
4	GUIDE	used	20316464	8.96	10792	0.336	0.374	0.154	0.251	100.282040	5.470405	-655.52	-1854.90
5	GUIDE	used	20341424	8.42	10795	0.264	0.407	0.088	0.149	99.923691	5.185077	-2165.70	-1203.87
6	GUIDE	used	20860472	7.01	10801	-0.159	-0.251	0.097	0.170	100.133111	6.371245	1955.91	139.15
7	GUIDE	used	20864528	7.41	10801	-0.461	-0.429	0.120	0.196	99.593328	6.317246	877.71	1753.15

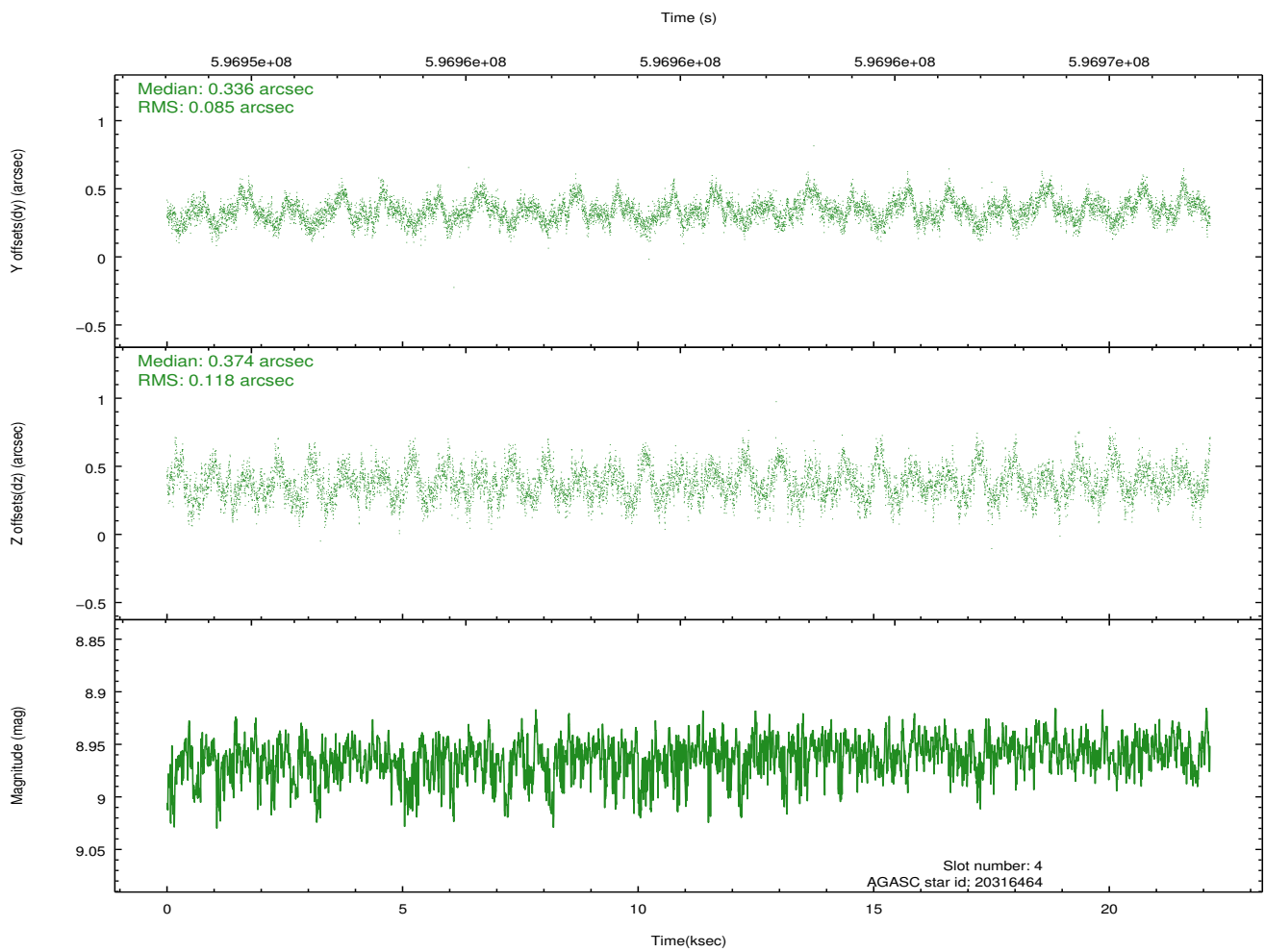
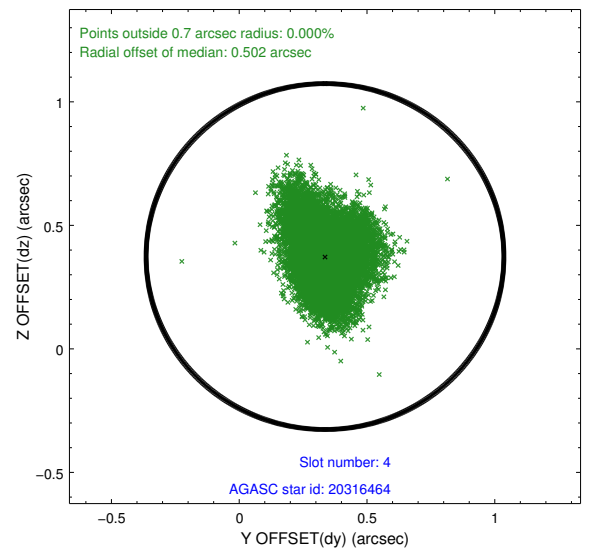
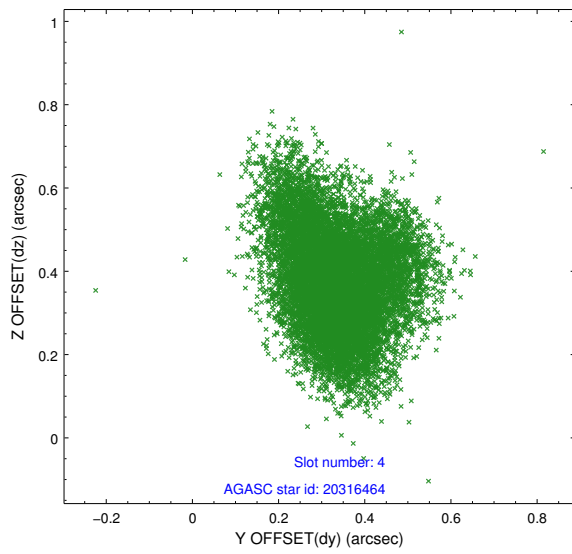
∞

2.4 Star Slots

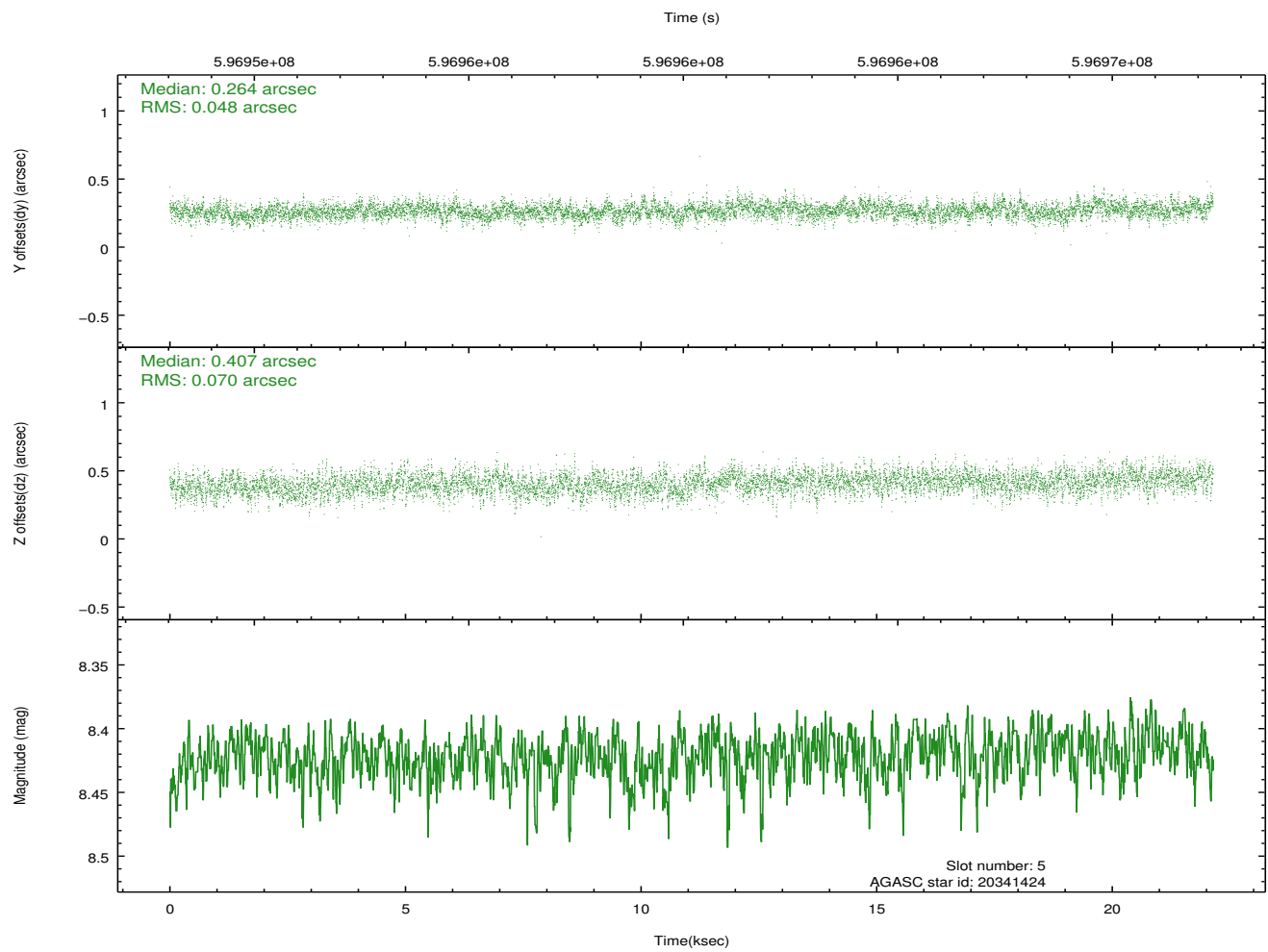
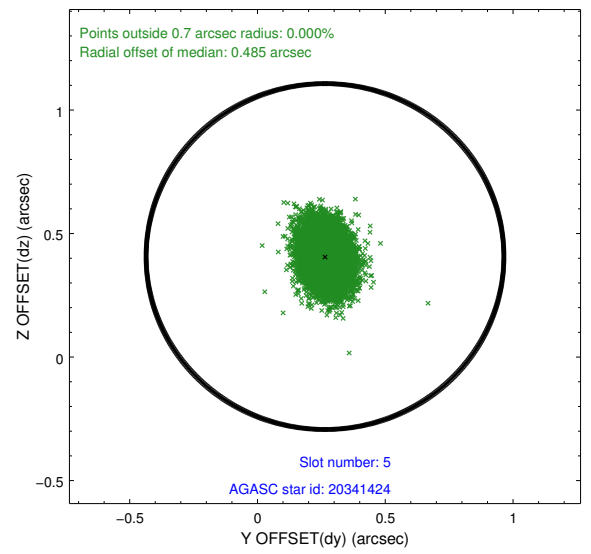
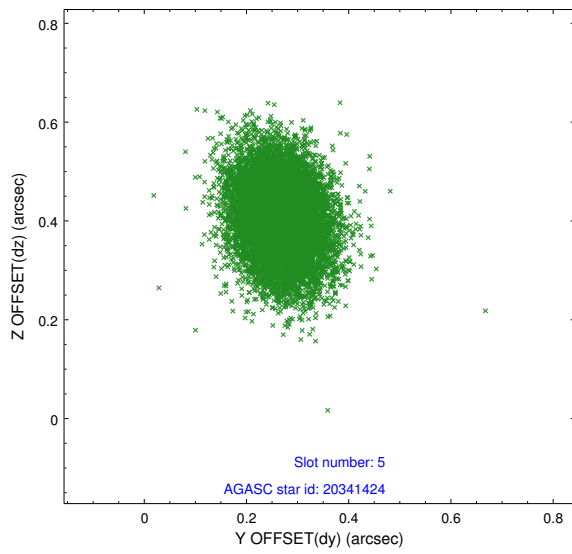
2.4.1 Slot 3



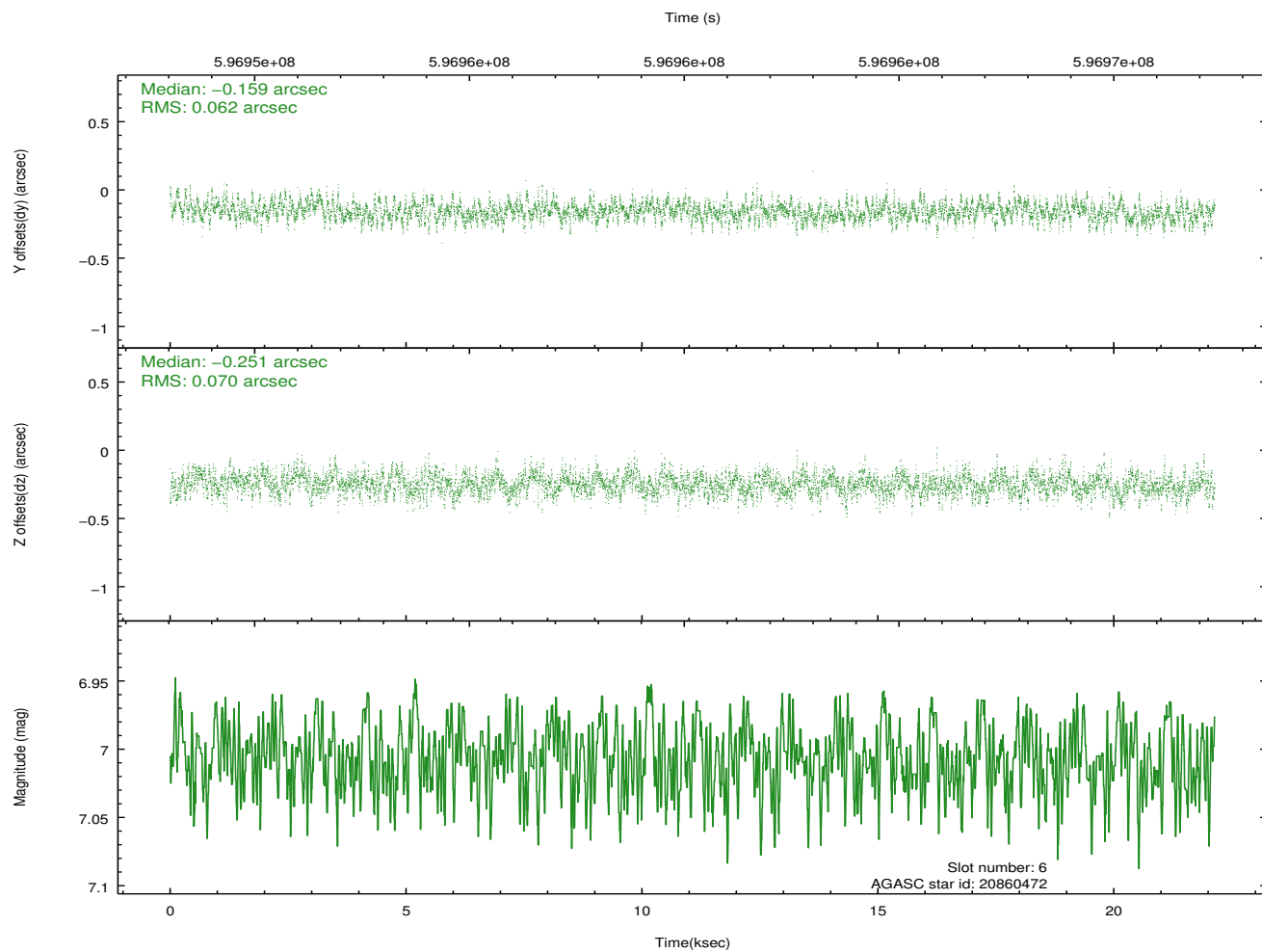
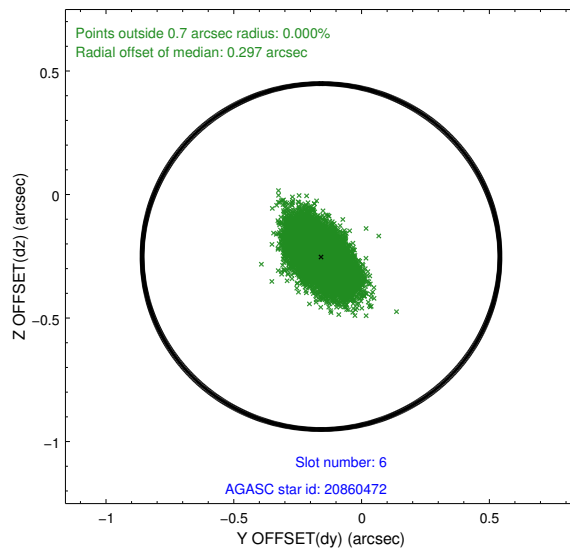
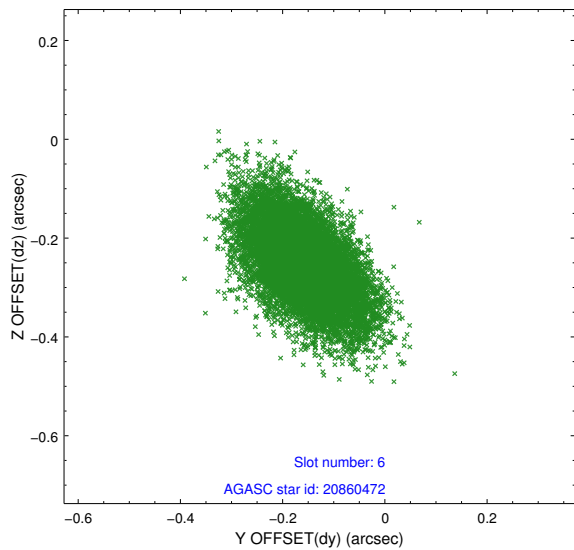
2.4.2 Slot 4



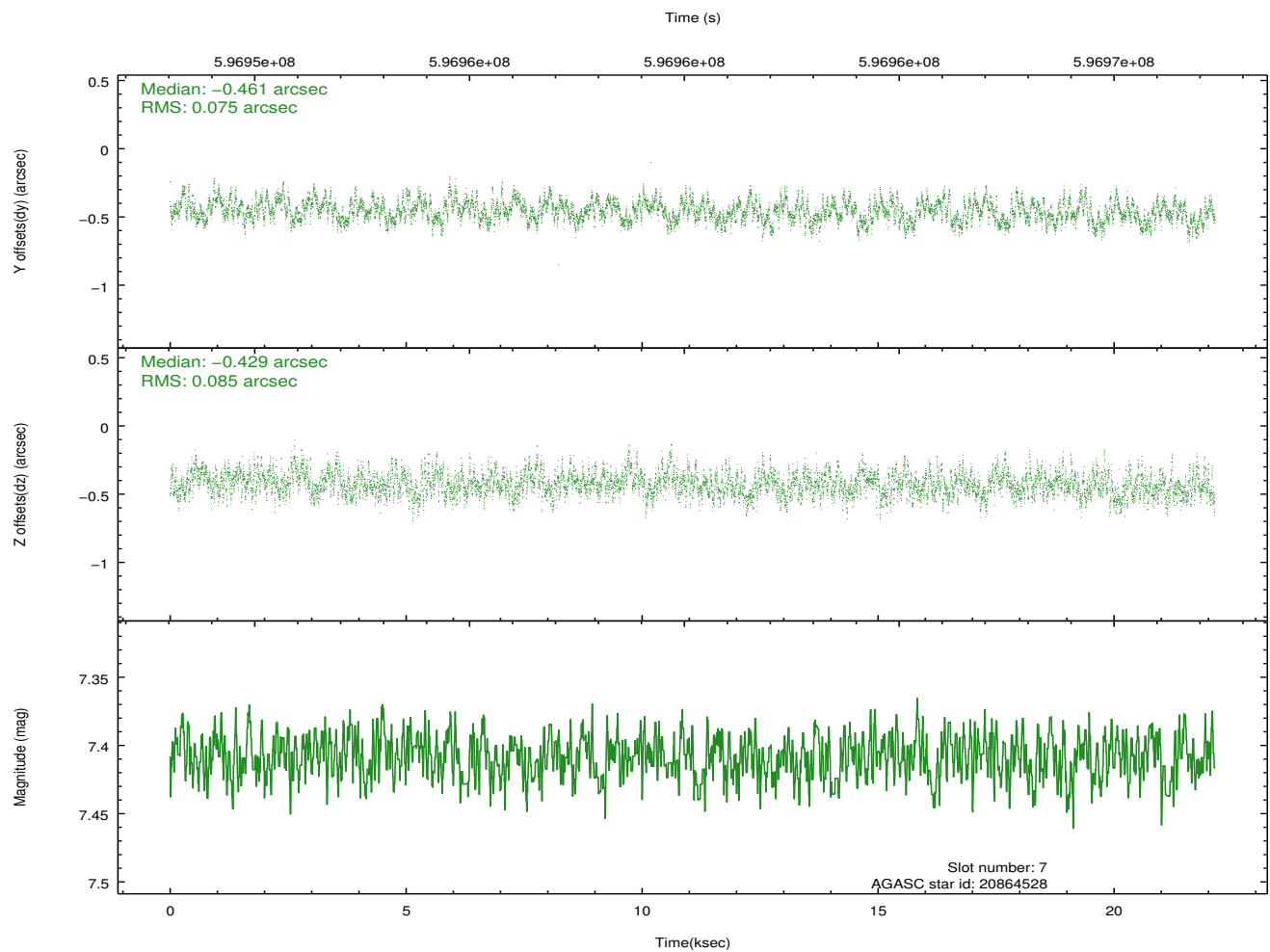
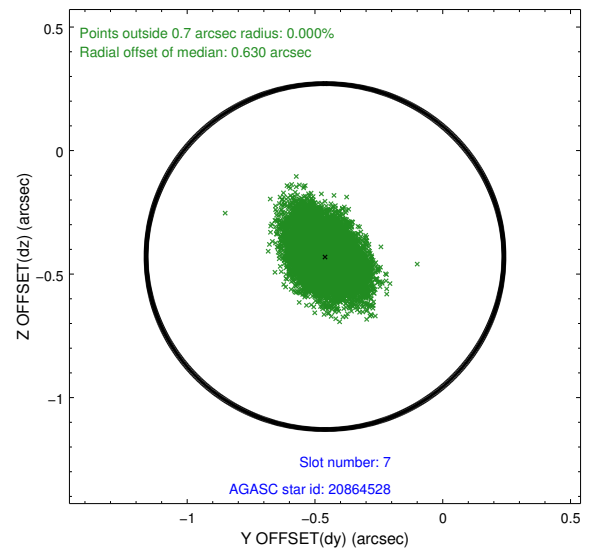
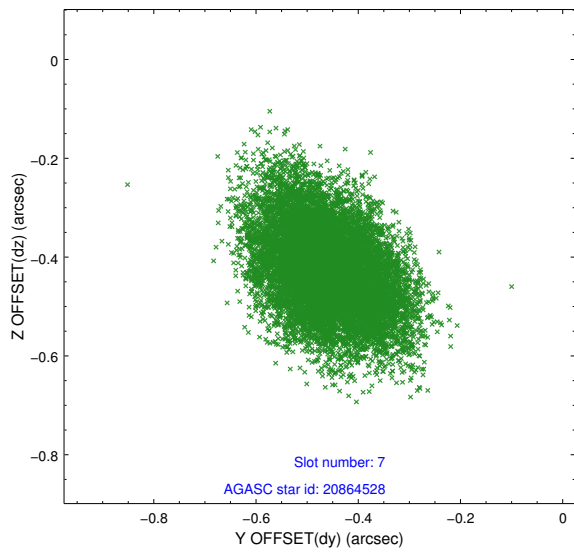
2.4.3 Slot 5



2.4.4 Slot 6

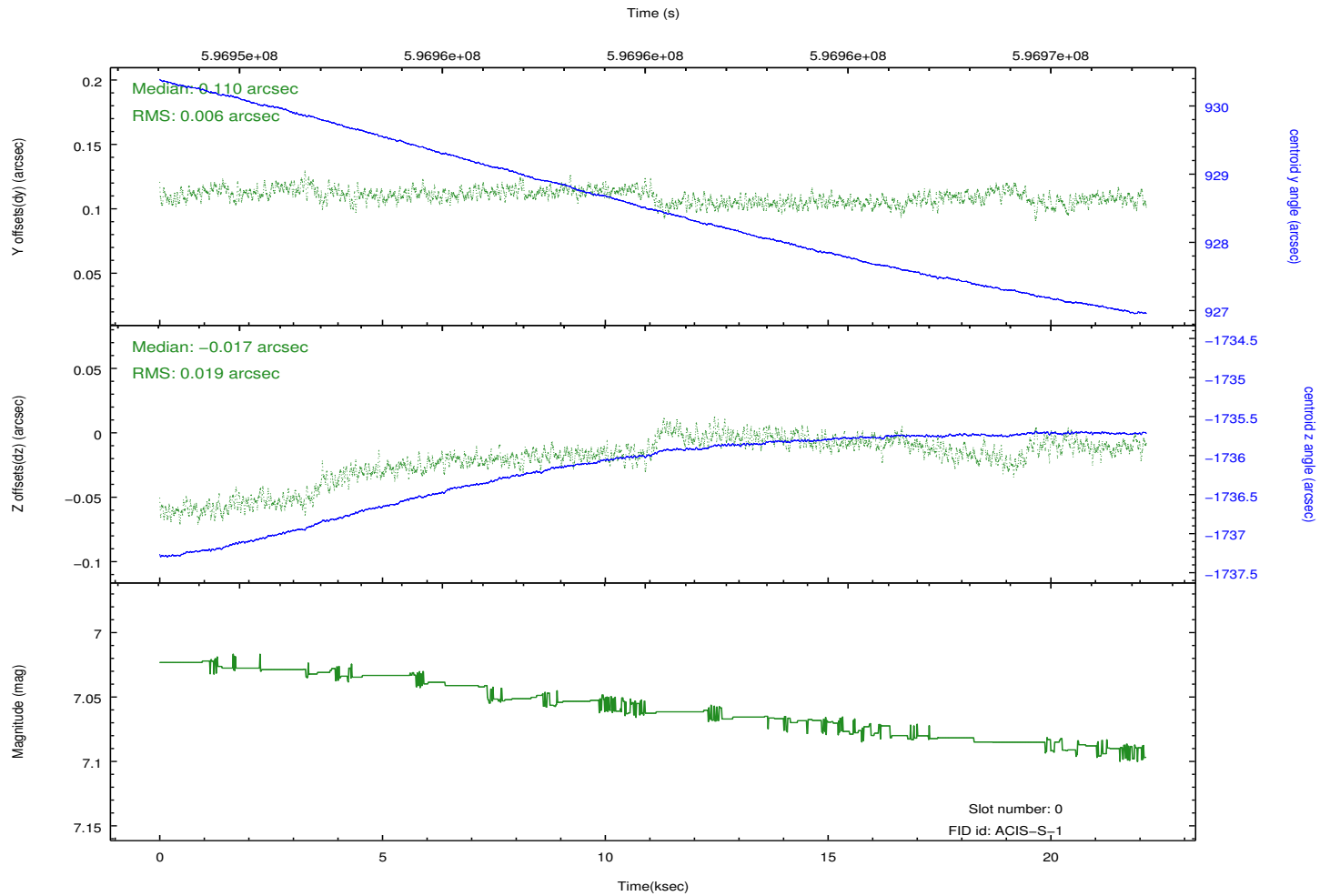
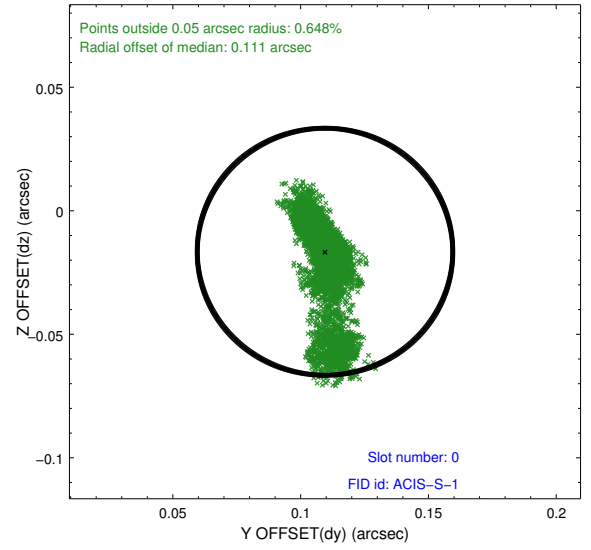
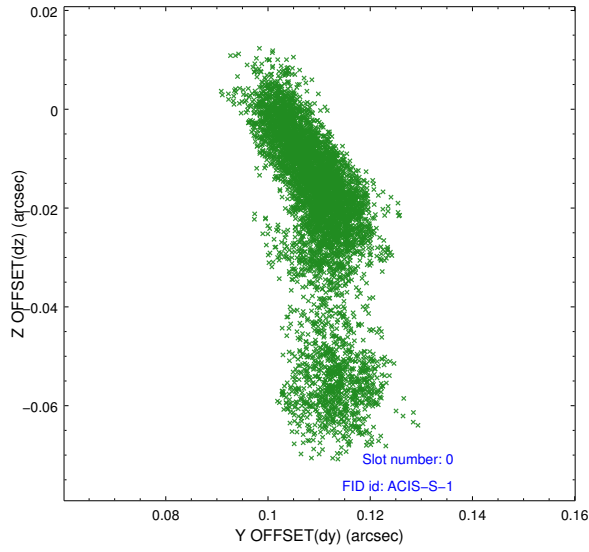


2.4.5 Slot 7

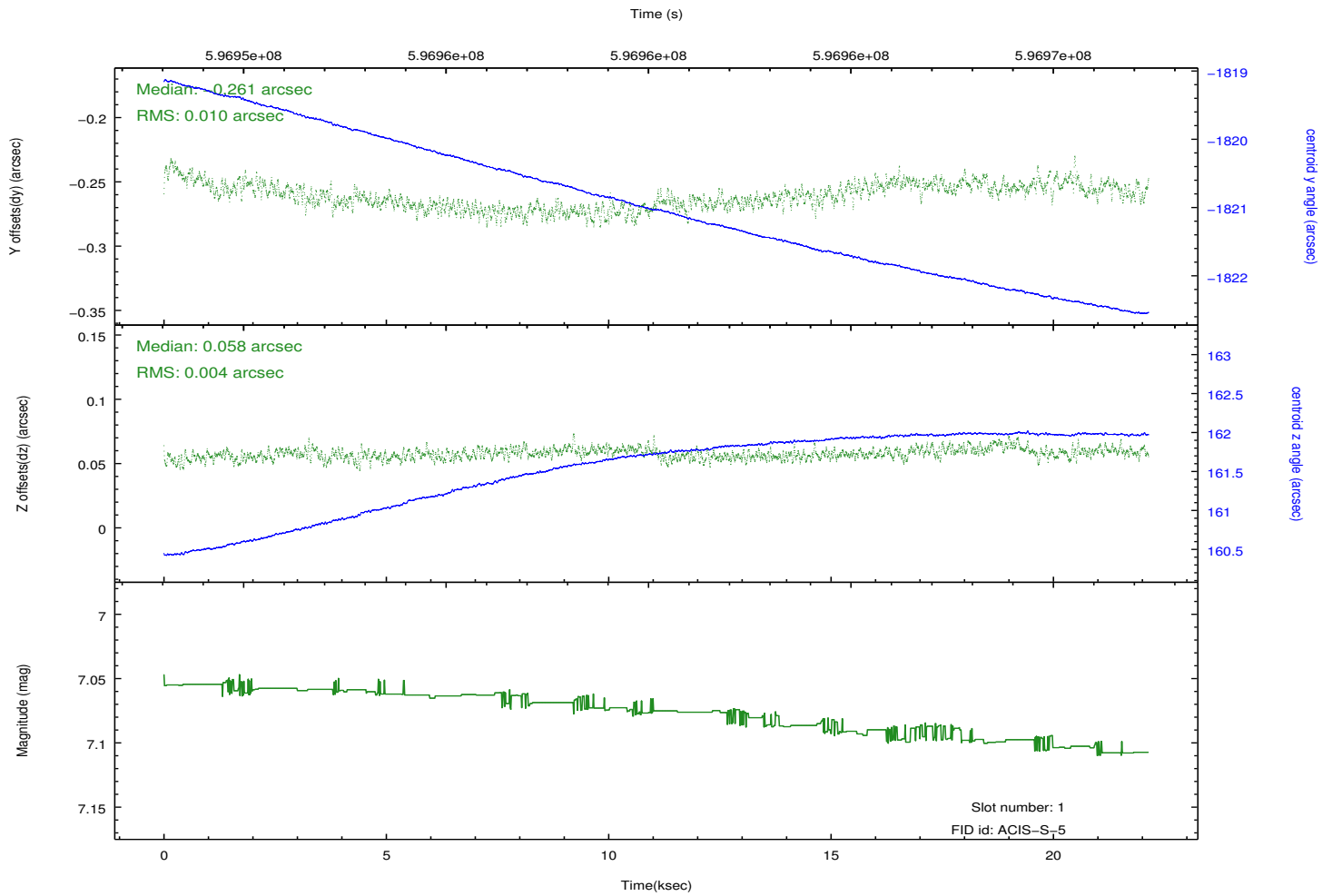
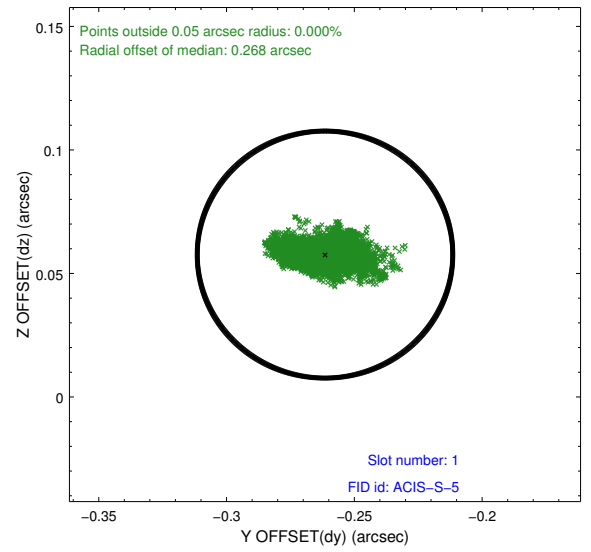
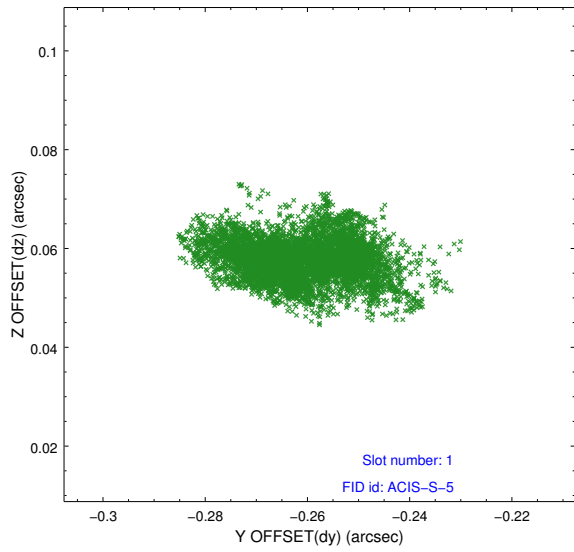


2.5 FID Slots

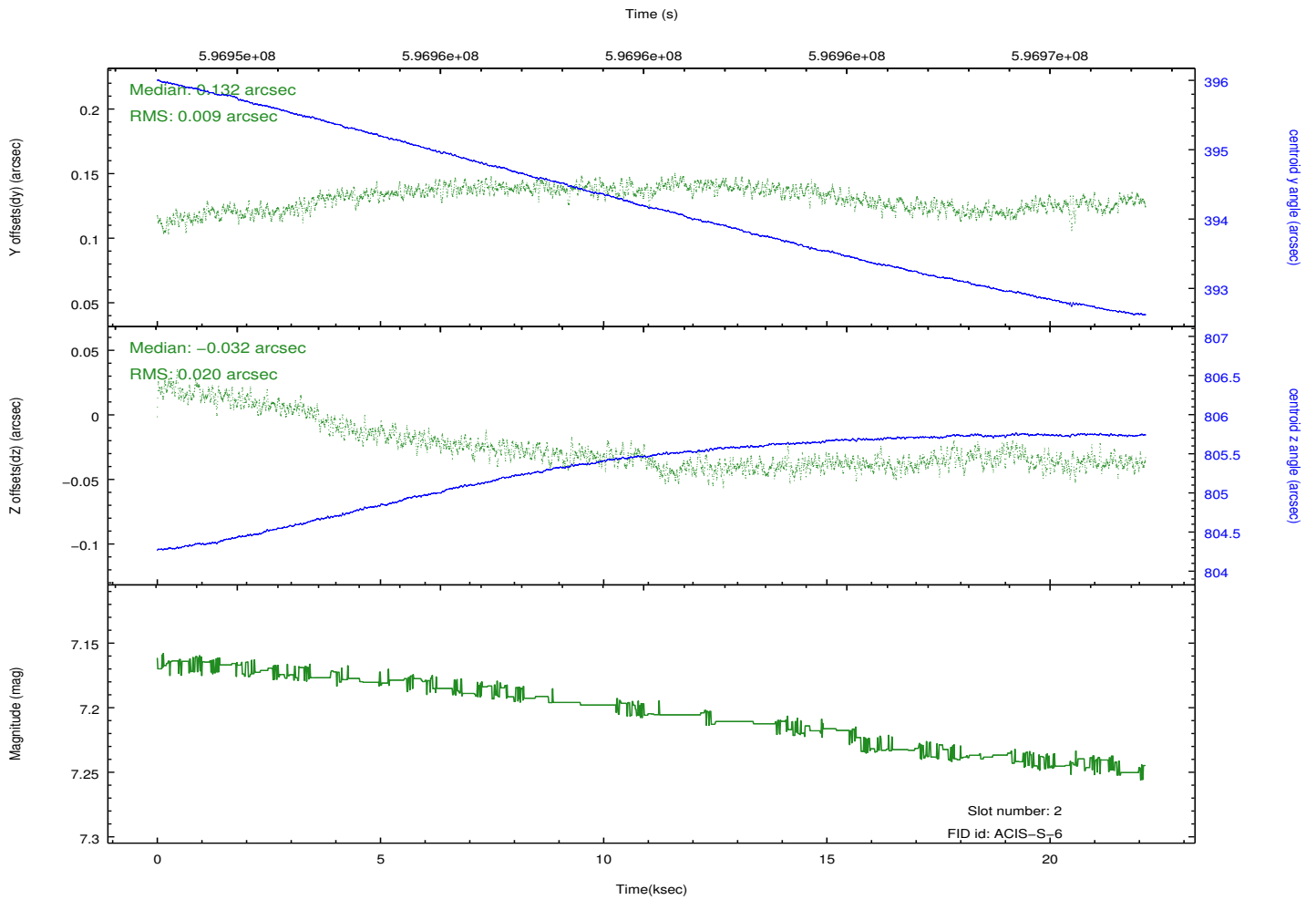
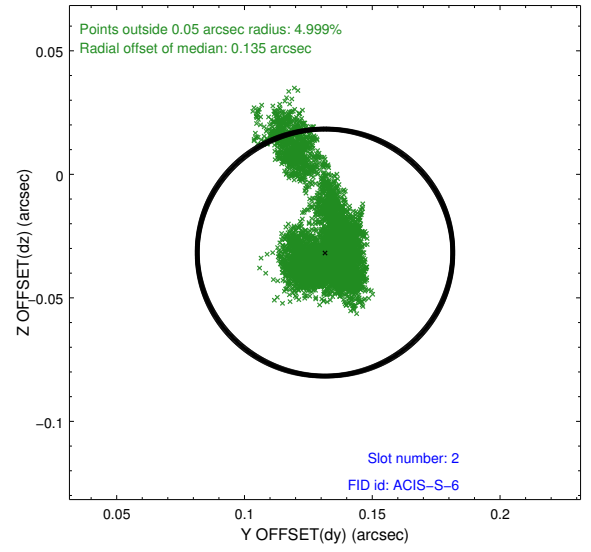
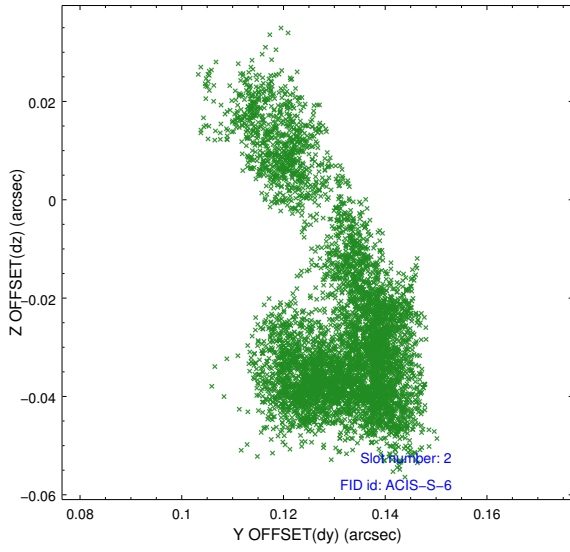
2.5.1 Slot 0



2.5.2 Slot 1



2.5.3 Slot 2



A Summary

A.1 Status

V&V Scientist	Jen Lauer
V&V Date (YYYY-MM-DD)	2016.12.01
V&V Edition	1
V&V Disposition and Status	OK
V&V Charge Time	22.092

A.2 Comments