

# V&V Reference Report

## L2 ASCDS Version : 10.5.2

Observation 17875 - L2 Version 1  
Chandra X-Ray Center

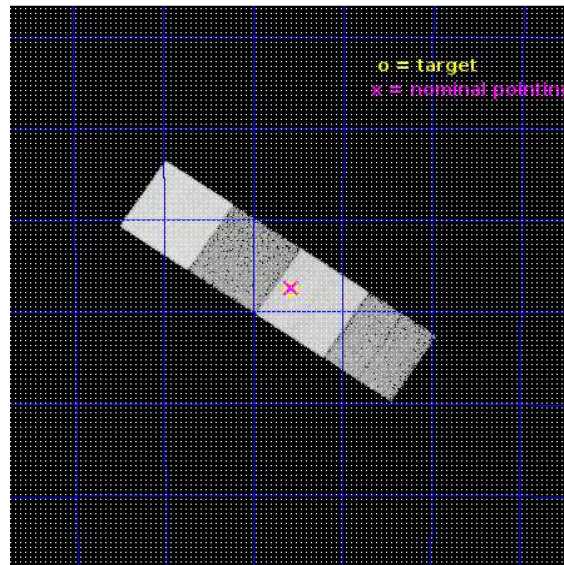
L2 Processing Date : Nov 8 2016

## Contents

<b>1</b>	<b>Front</b>	<b>2</b>
<b>2</b>	<b>OBI</b>	<b>3</b>
2.1	OBI . . . . .	3
2.1.1	Images . . . . .	3
2.1.2	Bias . . . . .	3
2.1.3	Parameters . . . . .	4
2.1.4	Events . . . . .	4
2.2	Compared Parameters . . . . .	5
2.3	Aspect . . . . .	6
2.4	Star Slots . . . . .	9
2.4.1	Slot 3 . . . . .	9
2.4.2	Slot 4 . . . . .	10
2.4.3	Slot 5 . . . . .	11
2.4.4	Slot 6 . . . . .	12
2.4.5	Slot 7 . . . . .	13
2.5	FID Slots . . . . .	14
2.5.1	Slot 0 . . . . .	14
2.5.2	Slot 1 . . . . .	15
2.5.3	Slot 2 . . . . .	16
<b>A</b>	<b>Summary</b>	<b>17</b>
A.1	Status . . . . .	17
A.2	Comments . . . . .	17

# 1 Front

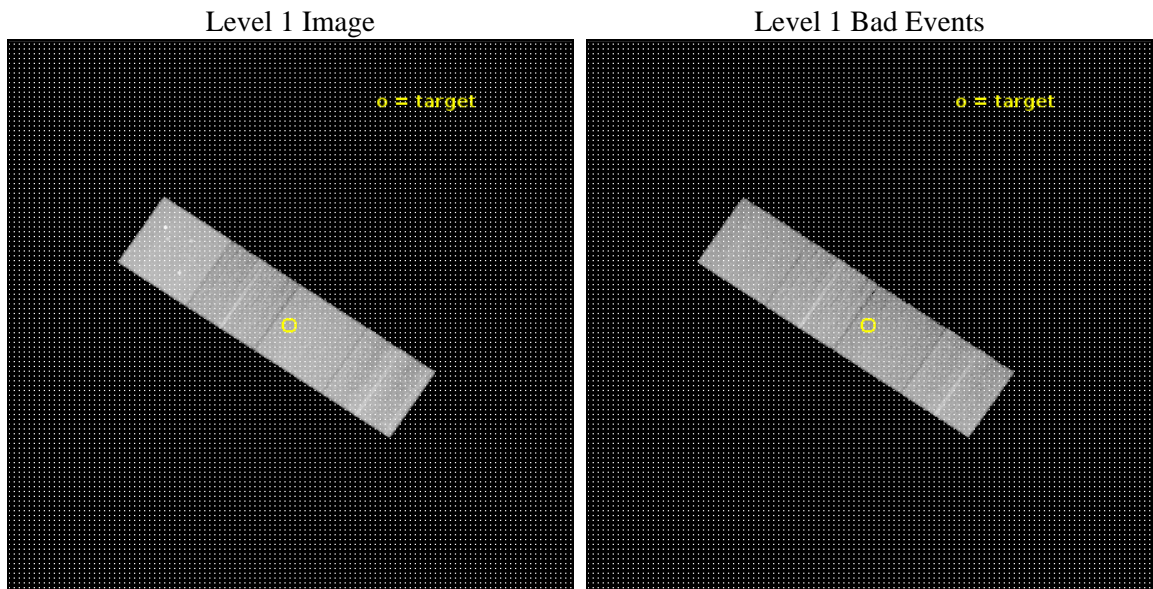
seq_num	502494	Sequence number
obs_id	17875	Observation id
title	Rapid Observations of Short-Duration Gamma-Ray Bursts: Accurate Positions Hold the Key to the Progenitor Population	Proposal title
observer	Edo Berger	Principal investigator
object	GRB161104A	Source name
dtcycle	0	&#160
cycle	P	events from which exps? Prim/Second/Both
ra_targ	77.893708	Observer's specified target RA [deg]
dec_targ	-51.460111	Observer's specified target Dec [deg]
ra_nom	77.89311292637	Nominal RA [deg]
dec_nom	-51.456903288803	Nominal Dec [deg]
roll_nom	33.912334516096	Nominal Roll [deg]
revision	1	Processing version of data
ontime	20063.200154424	Sum of GTIs [s]
livetime	19801.059674093	Livetime [s]
ontime5	20063.200154424	Sum of GTIs [s]
ontime6	20060.059144378	Sum of GTIs [s]
ontime7	20063.200154424	Sum of GTIs [s]
ontime8	20063.200154424	Sum of GTIs [s]
l2events	206893	Number of level 2 events



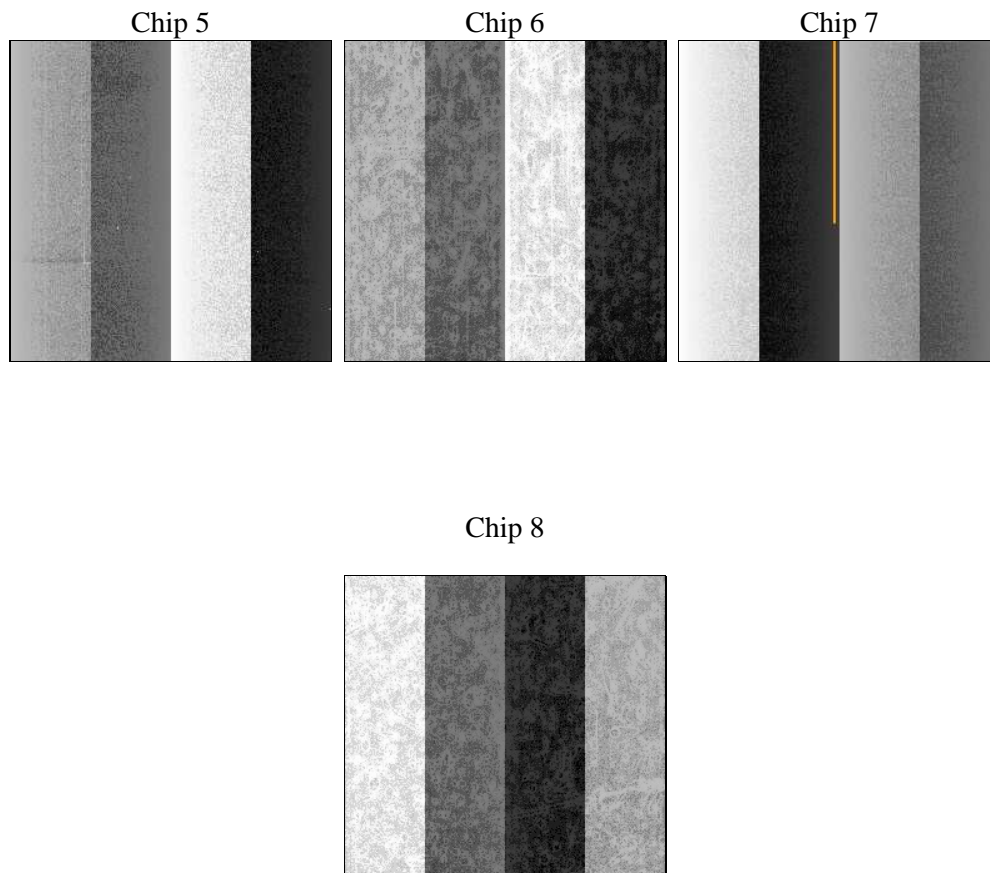
## 2 OBI

### 2.1 OBI

#### 2.1.1 Images



#### 2.1.2 Bias



### 2.1.3 Parameters

obi_num	0	Obi number	sched_exp_time	20000.000000	[s] Scheduled observation exposure time
ascdsver	10.5.2	Processing system revision	ontime	20063.200154424	Sum of GTIs [s]
caldsver	4.7.2	&#160	ontime5	20063.200154424	Sum of GTIs [s]
date	2016-11-09T02:31:41	Date and time of file creation	ontime6	20060.059144378	Sum of GTIs [s]
revision	1	Processing version of data	ontime7	20063.200154424	Sum of GTIs [s]
			ontime8	20063.200154424	Sum of GTIs [s]
			l1events	723010	Number of level 1 events

### 2.1.4 Events

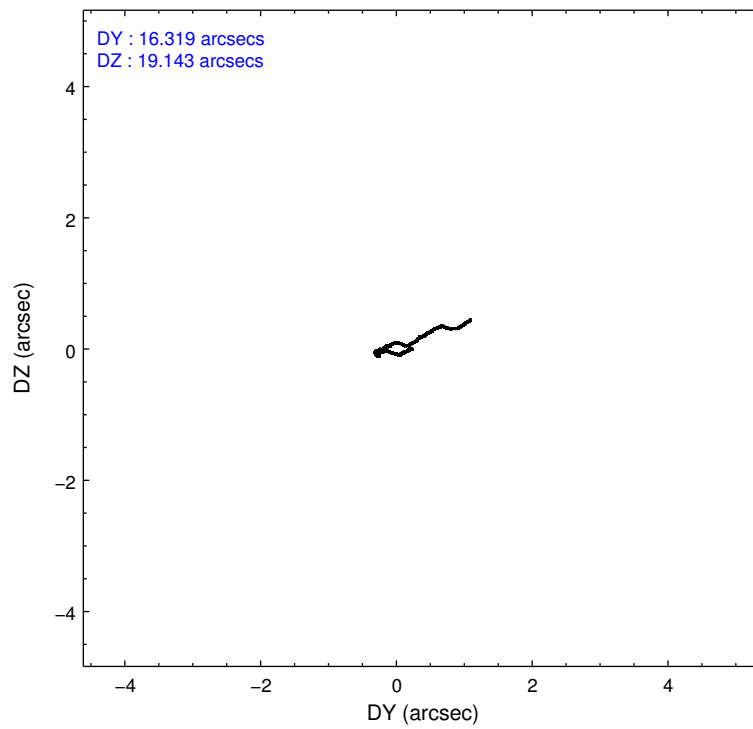
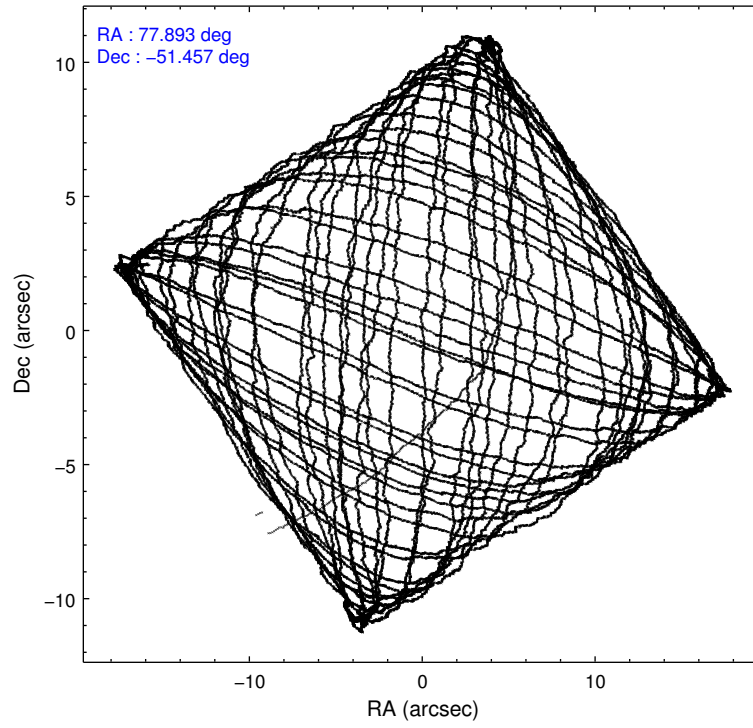
	ccd 5	ccd 6	ccd 7	ccd 8
level 1 events	223451	139732	179143	180684
rejected events	113991	123842	100673	131430
rejected %	51%	88%	56%	72%

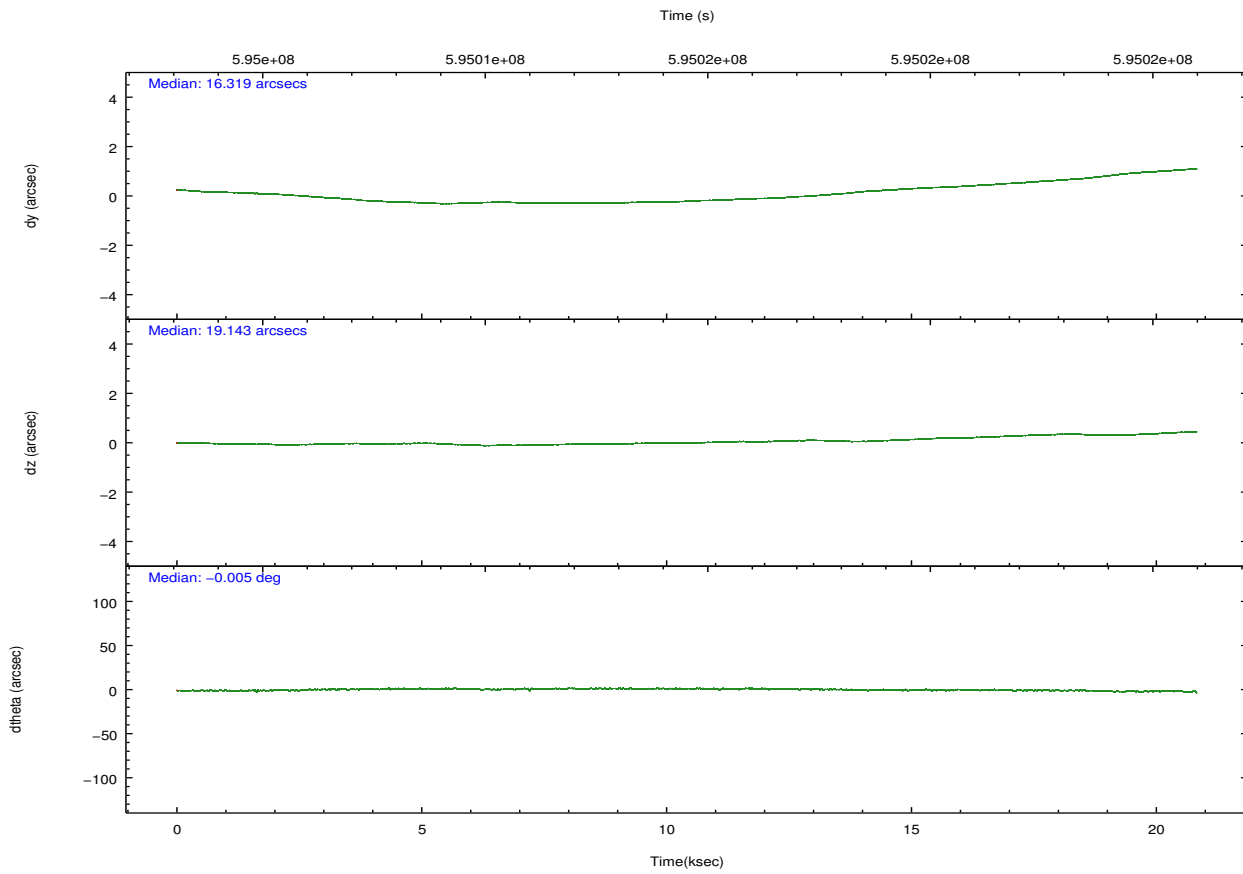
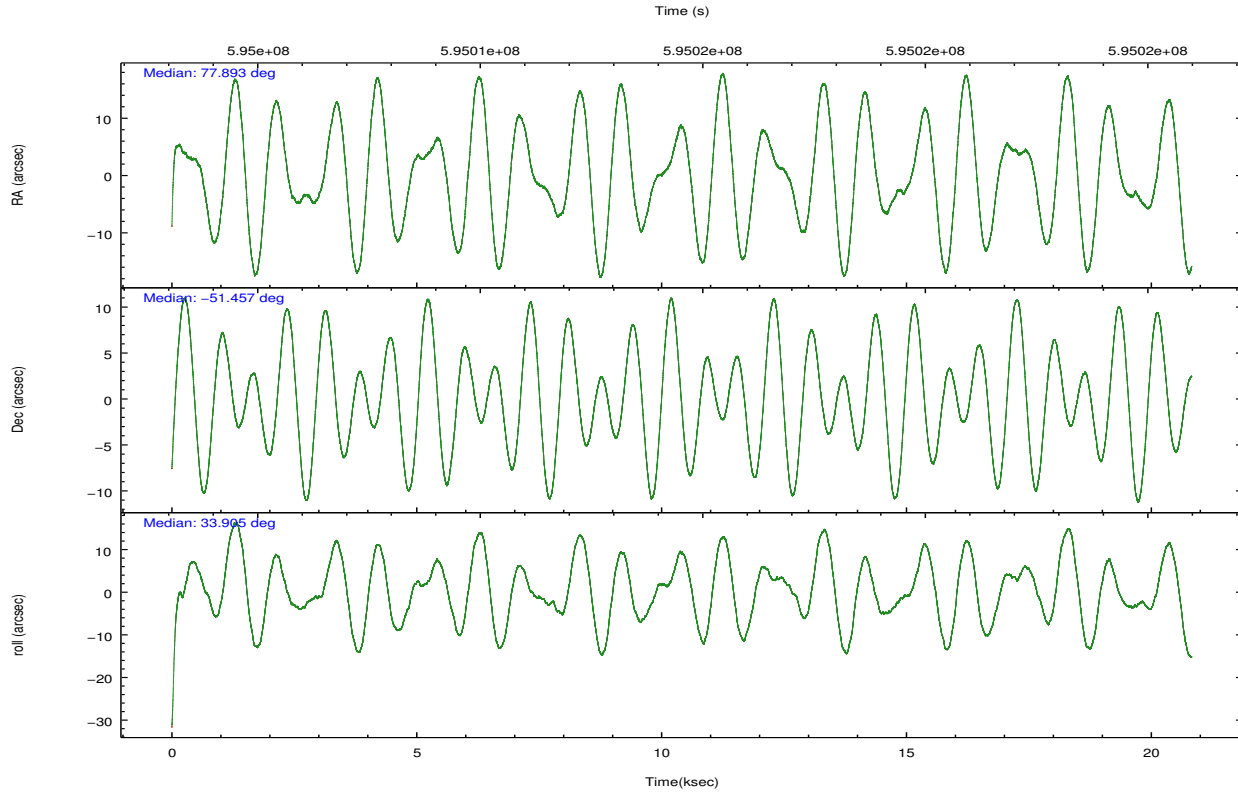
	ccd 5	ccd 6	ccd 7	ccd 8
grade 0 events	10300	5325	6752	13844
	4%	3%	3%	7%
grade 1 events	689	73	249	154
	0%	0%	0%	0%
grade 2 events	34385	3670	16610	12011
	15%	2%	9%	6%
grade 3 events	3399	1622	6395	5161
	1%	1%	3%	2%
grade 4 events	3272	1575	6320	4874
	1%	1%	3%	2%
grade 5 events	15589	6747	17900	9977
	6%	4%	9%	5%
grade 6 events	58112	3704	42407	13370
	26%	2%	23%	7%
grade 7 events	97705	117016	82510	121293
	43%	83%	46%	67%

## 2.2 Compared Parameters

Parameter	Planned	Actual	Parameter	Planned	Actual
Instrument	ACIS	ACIS	Obspar format version number	7	7
Detector	ACIS-5678	ACIS-5678	Obspar file type	PREDICTED	ACTUAL
Grating	NONE	NONE	Obspar update status	NONE	UPDATED
Data mode	VFAINT	VFAINT	Number of optional ACIS chips dropped	0	0
Observation mode	POINTING	POINTING	On-chip summing requested	N	N
[deg] Pointing RA	77.874261	77.89311292636991	Subarray requested	NONE	NONE
[deg] Pointing Dec	-51.481714	-51.45690328880317	Alternating exposures requested	N	N
[deg] Pointing Roll	33.740969	33.91233451609552	[s] Primary exposure time	0.000000	3.1
[mm] SIM focus pos	-0.684267	-0.6828225247311905			
[mm] SIM defocus	0	0.001444936568705701			
[mm] SIM translation stage pos	-190.132523	-190.1400660498719			
[mm] SIM translation stage offset	0	0.00754346686406393			
[s] Observation start time (MET)	595004923.184000	595003305.8093801			
Observation start date	2016-11-08T15:07:35	2016-11-08T14:41:45			
[s] Observation end time (MET)	595024923.184000	595025776.8856699			
Observation end date	2016-11-08T20:40:55	2016-11-08T20:56:16			
Read mode	TIMED	TIMED			

## 2.3 Aspect





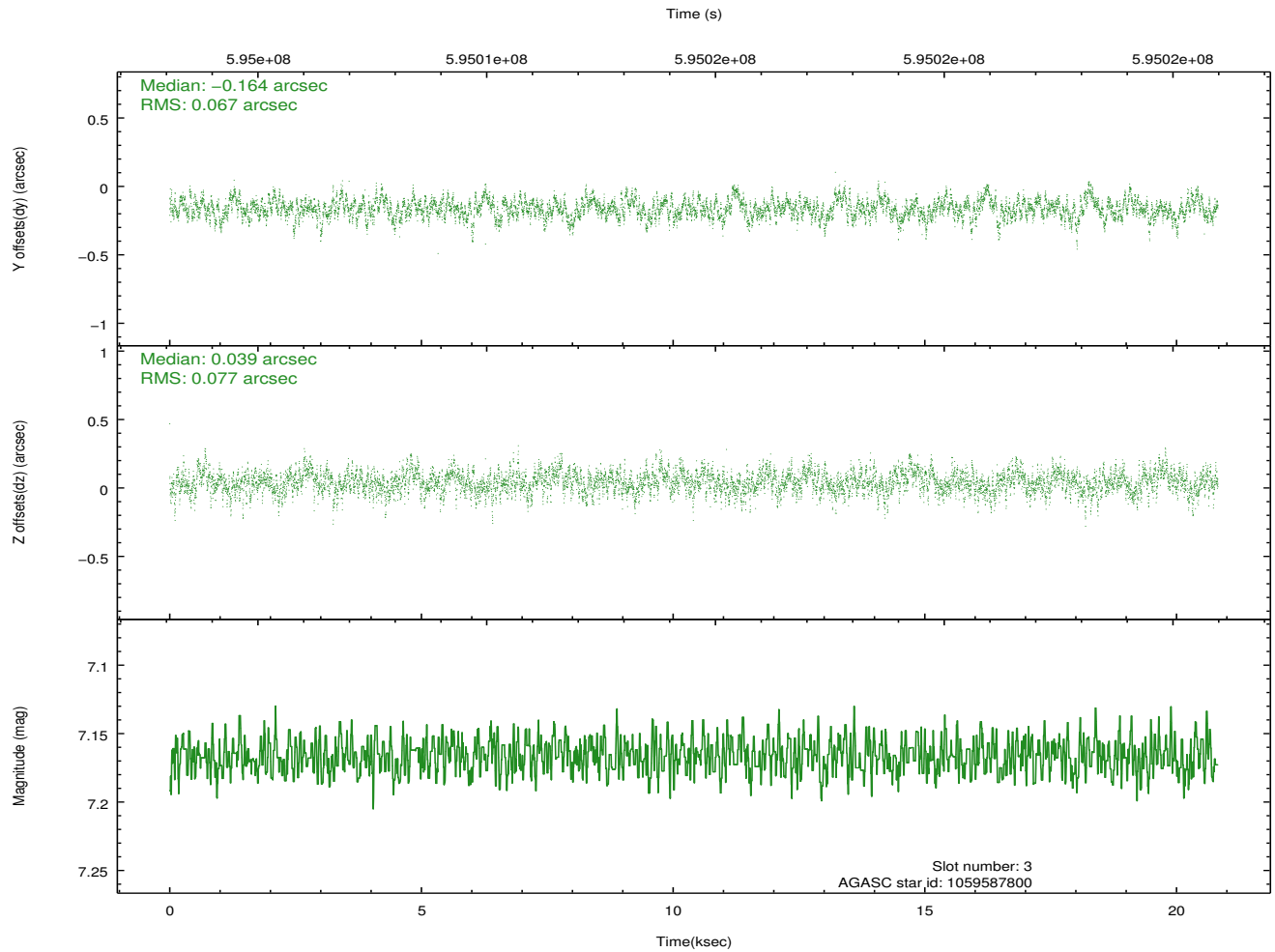
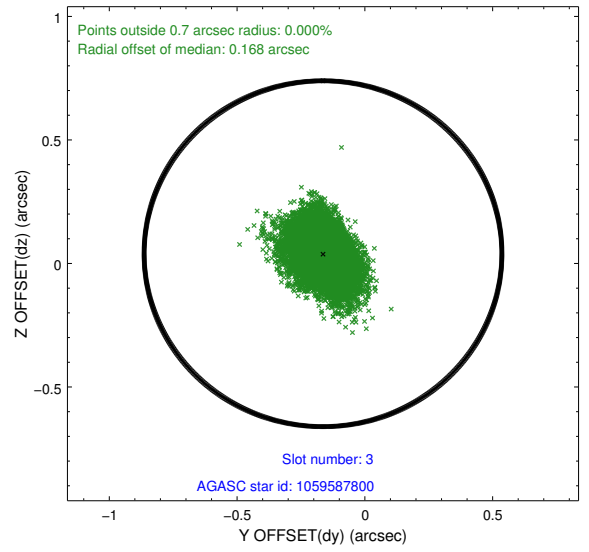
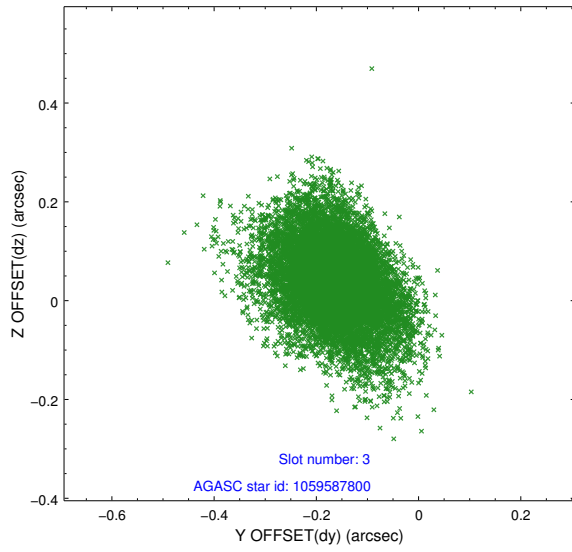
### Slot Statistics

slot	status	used	id	mag	n_pts	med_dy	med_dz	dr1	dr2	ra	dec	mean_y	mean_z
0	FID		ACIS-S-2	7.00	5080	-0.194	-0.091	0.009	0.015	0.000000	0.000000	-769.61	-1740.80
1	FID		ACIS-S-4	7.11	5080	0.437	0.118	0.007	0.013	0.000000	0.000000	2144.20	167.74
2	FID		ACIS-S-5	7.11	5080	-0.273	-0.018	0.009	0.022	0.000000	0.000000	-1822.33	161.43
3	GUIDE	used	1059587800	7.17	10157	-0.164	0.039	0.106	0.181	78.091709	-51.550118	268.53	-474.89
4	GUIDE	used	1059594456	9.42	10141	-0.129	-0.226	0.159	0.256	77.159693	-51.139690	-662.79	1913.65
5	GUIDE	used	1059595272	8.66	10148	0.028	-0.195	0.122	0.190	77.641992	-51.301462	-73.26	830.54
6	GUIDE	used	1059598168	9.45	10149	0.203	0.388	0.199	0.311	77.517522	-52.082167	-1857.79	-1360.42
7	GUIDE	used	1061296568	8.35	10148	0.068	0.001	0.123	0.203	79.123429	-51.476040	2326.82	-1558.43

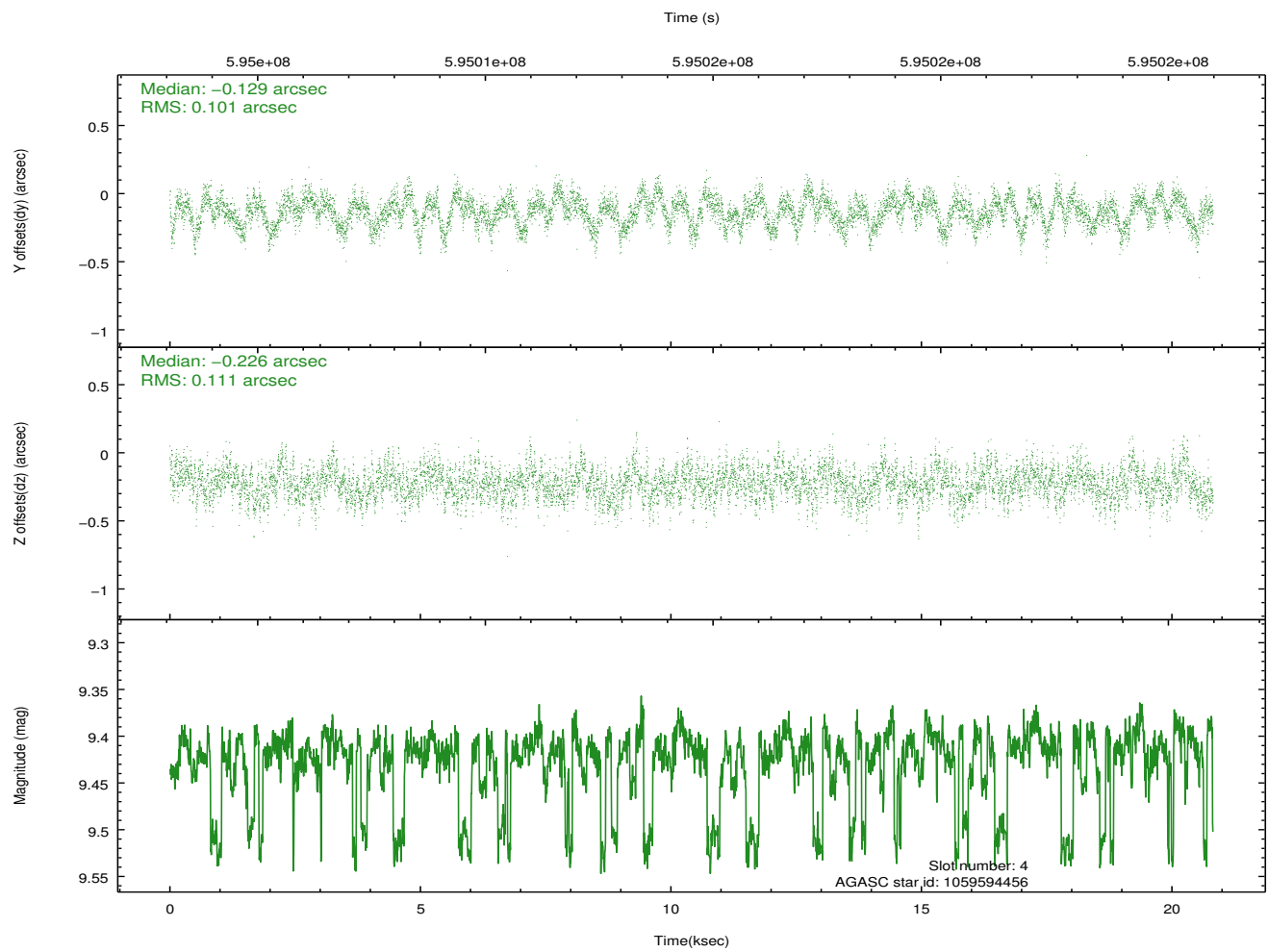
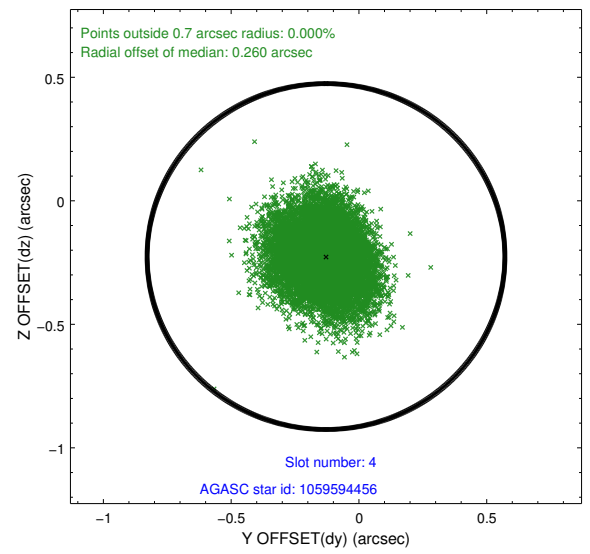
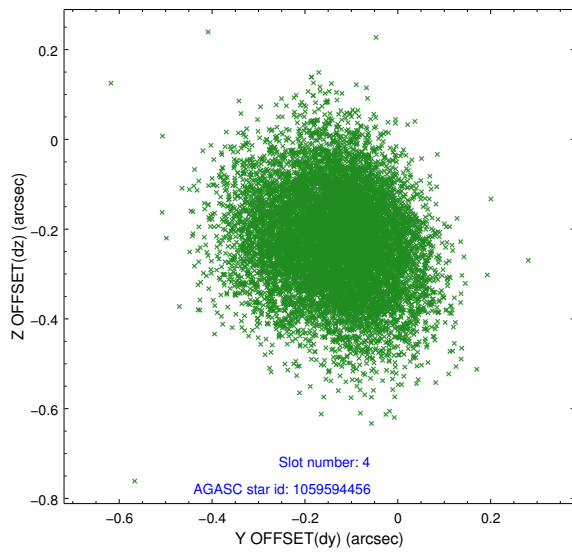
∞

## 2.4 Star Slots

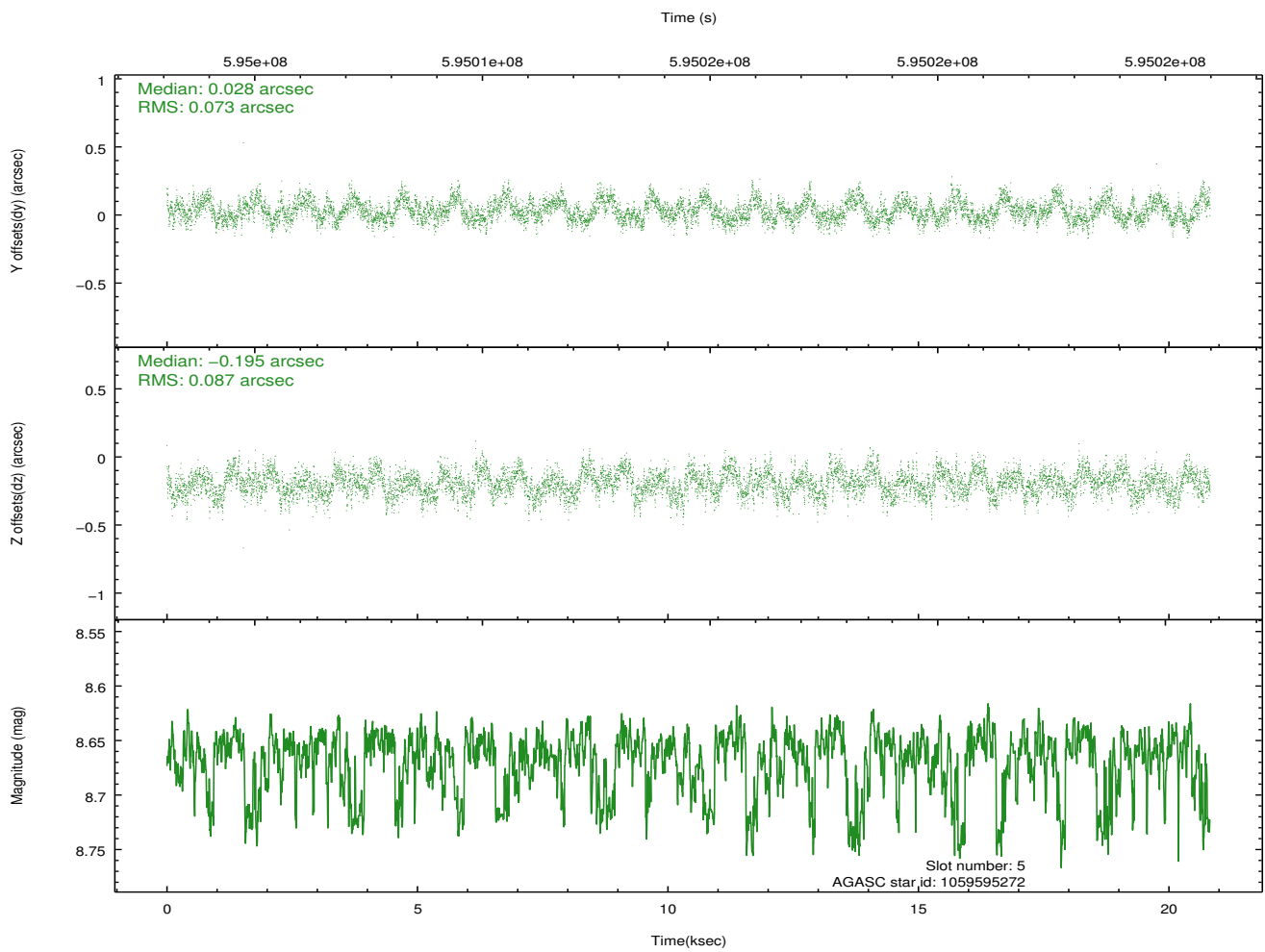
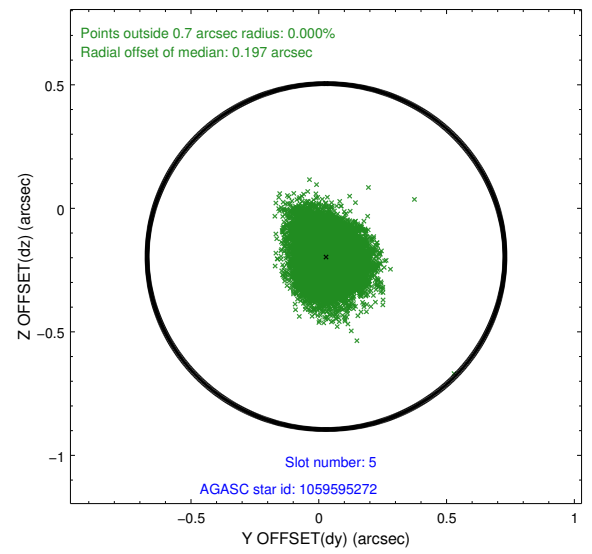
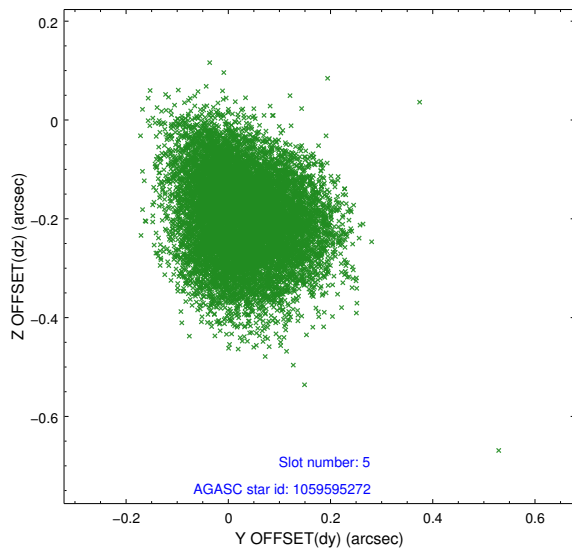
### 2.4.1 Slot 3



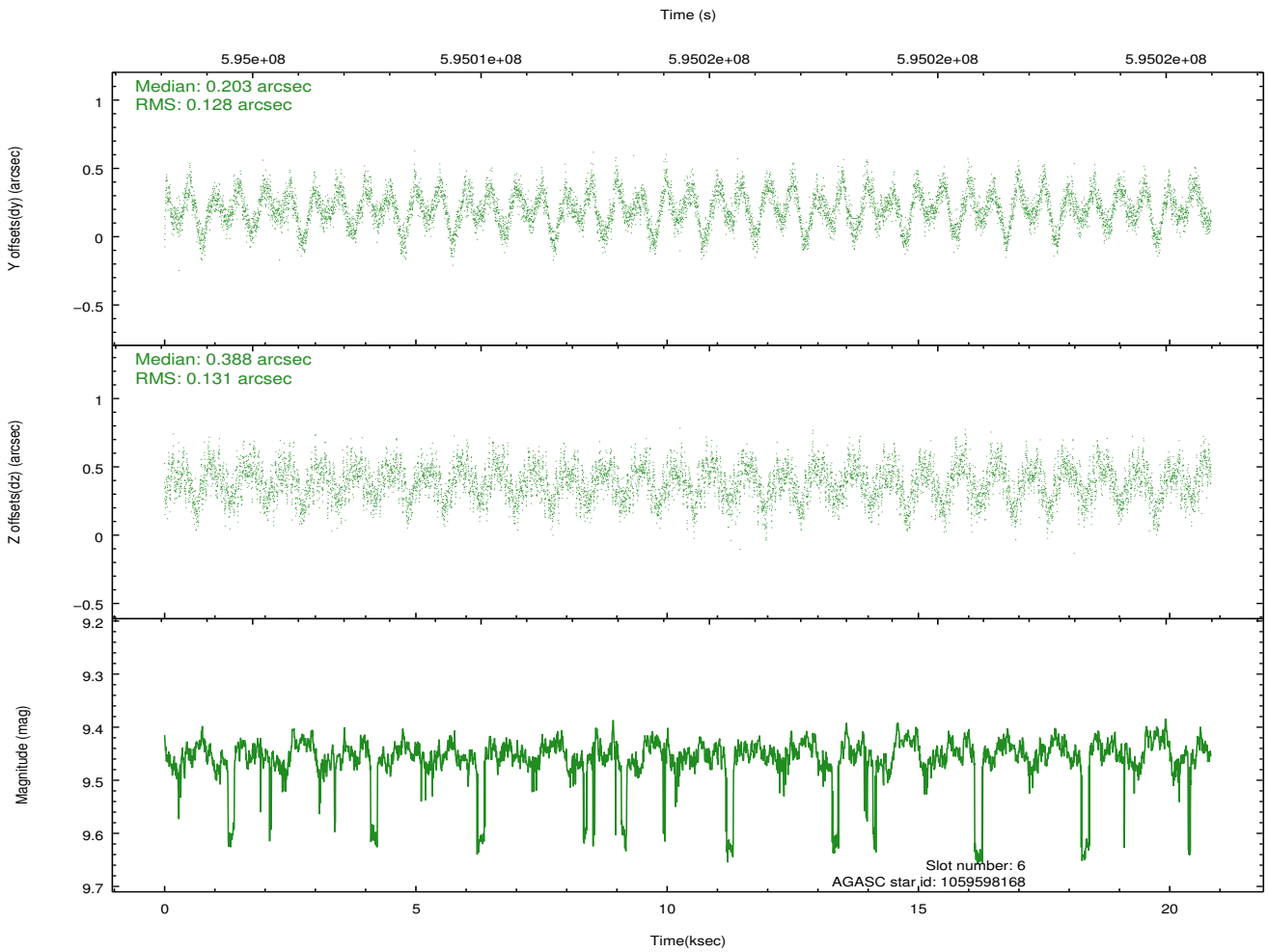
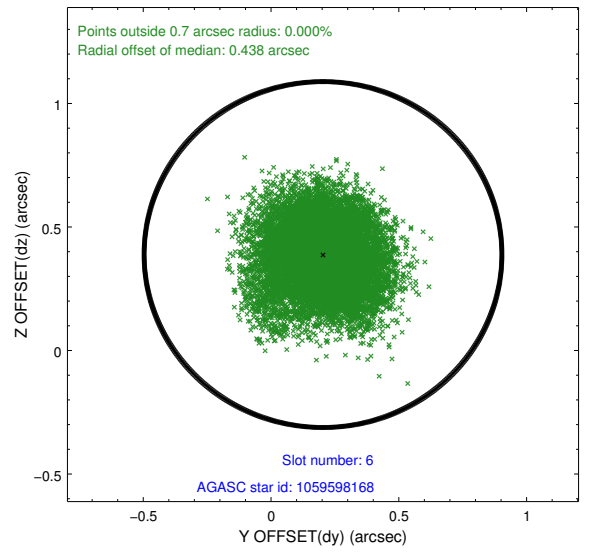
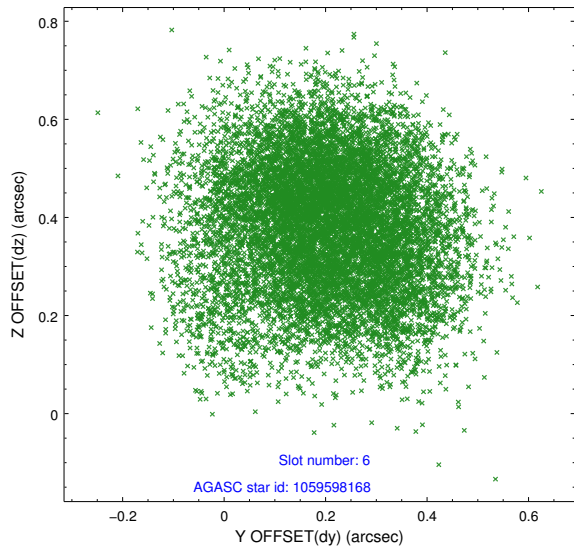
## 2.4.2 Slot 4



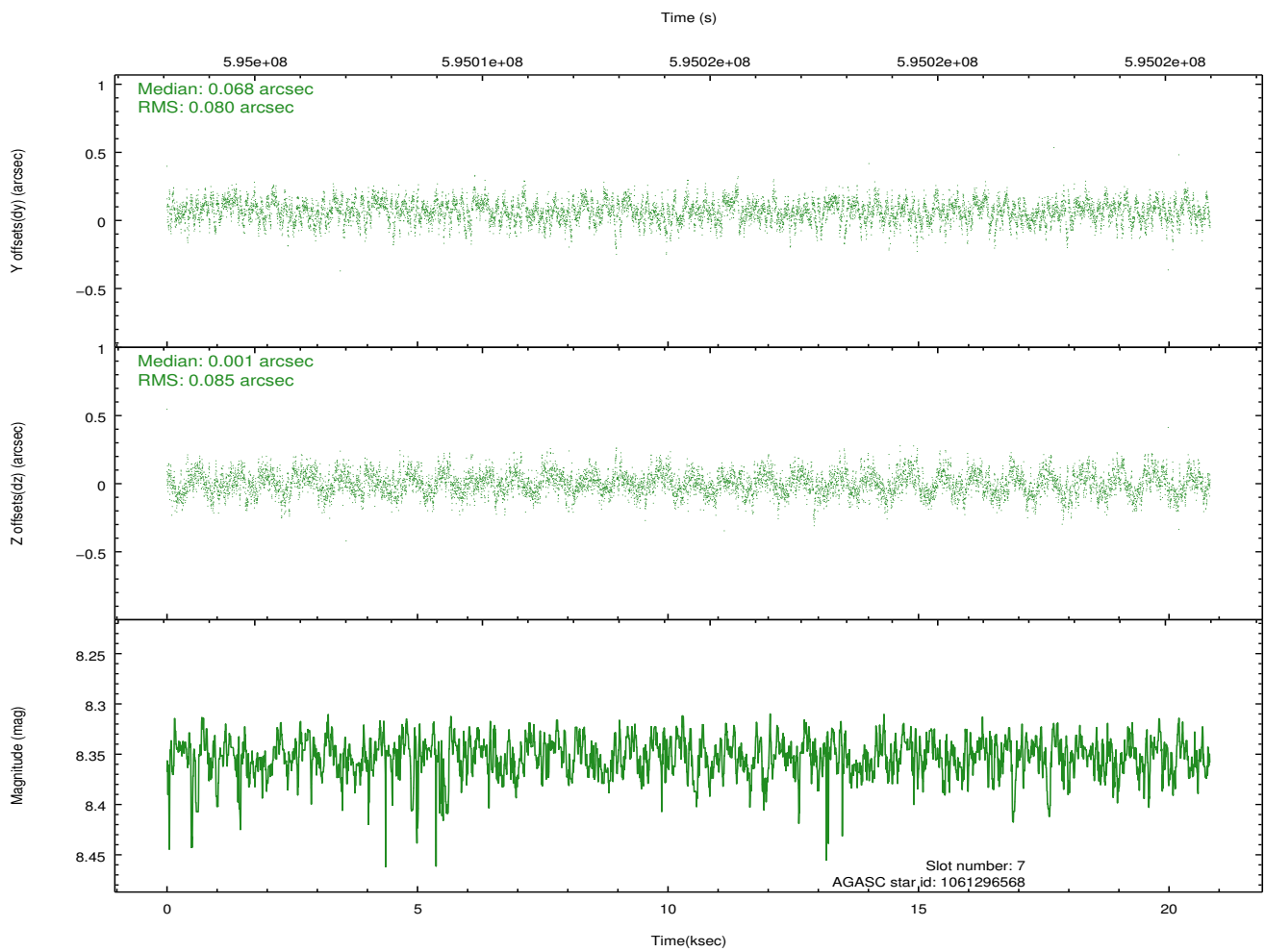
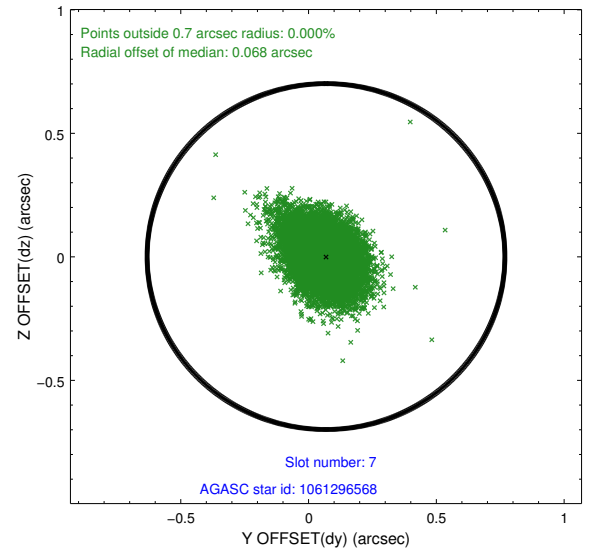
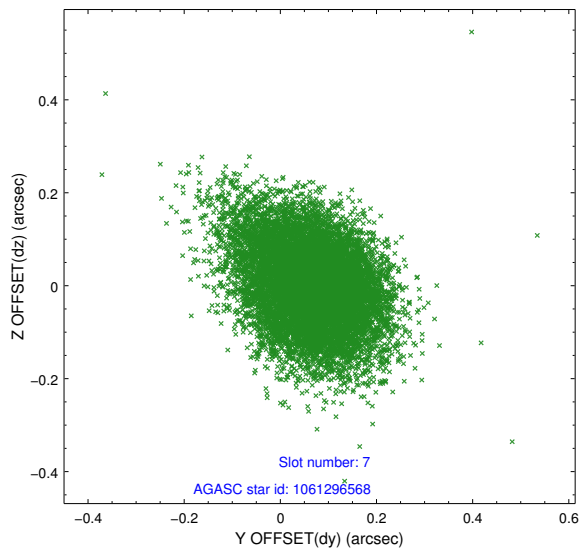
### 2.4.3 Slot 5



### 2.4.4 Slot 6

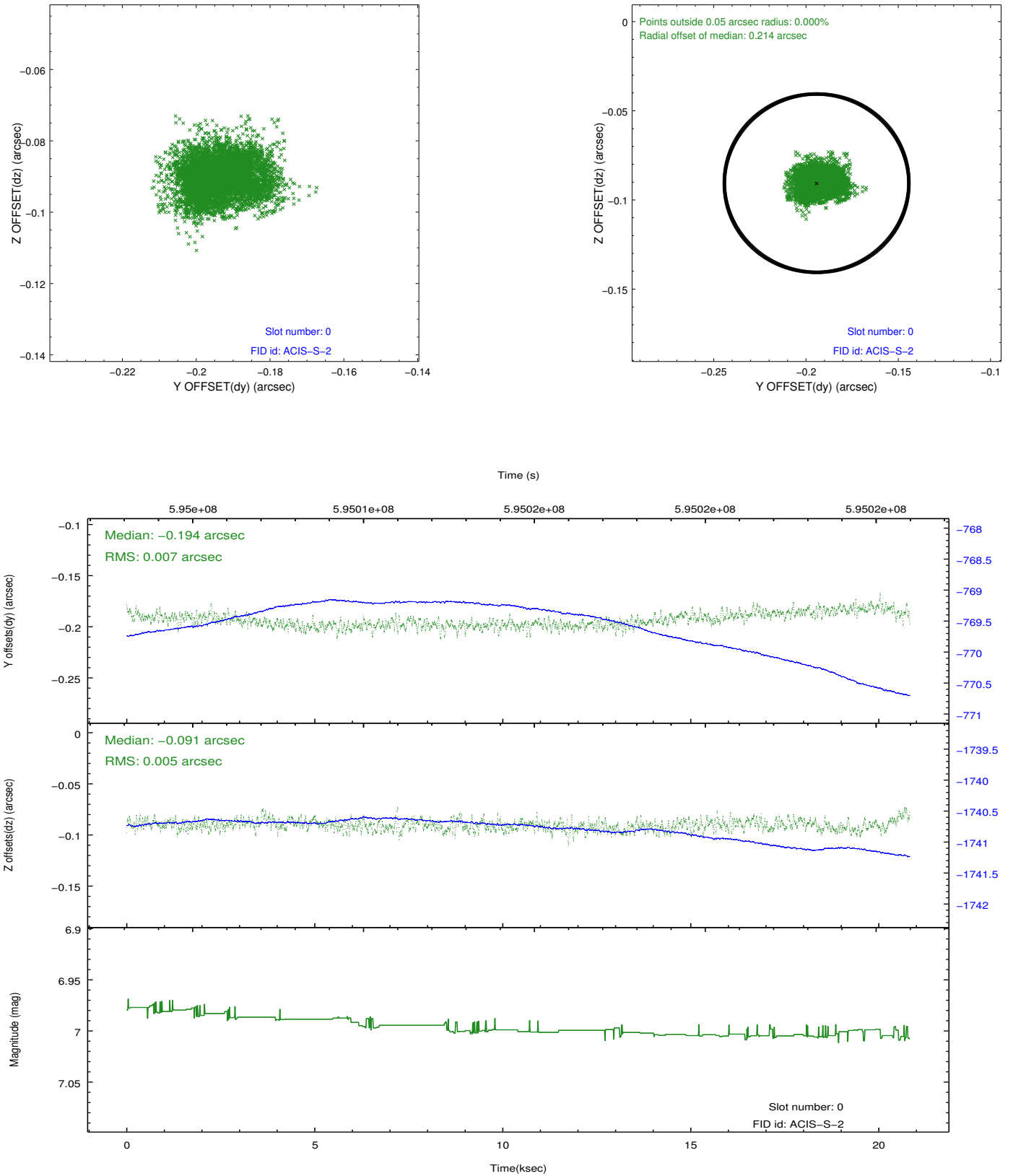


## 2.4.5 Slot 7

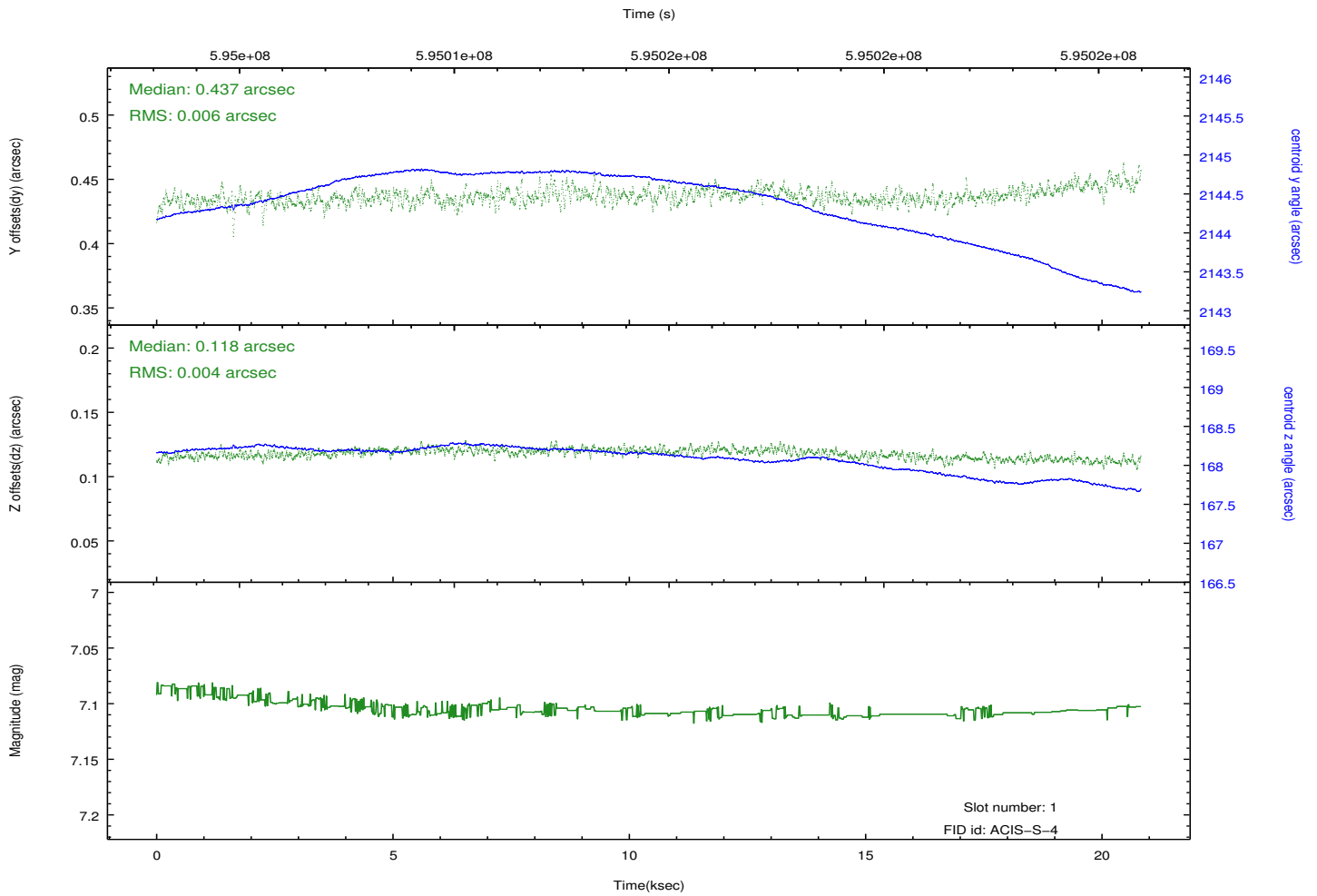
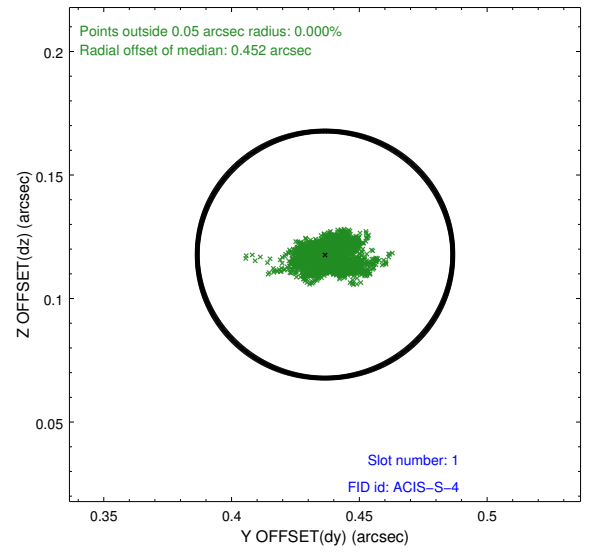
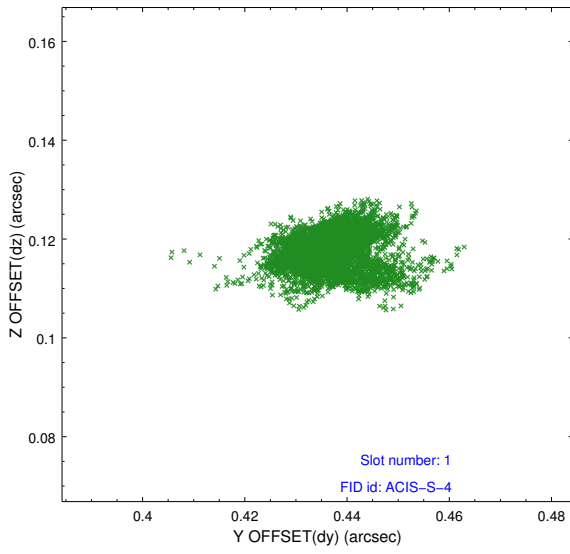


## 2.5 FID Slots

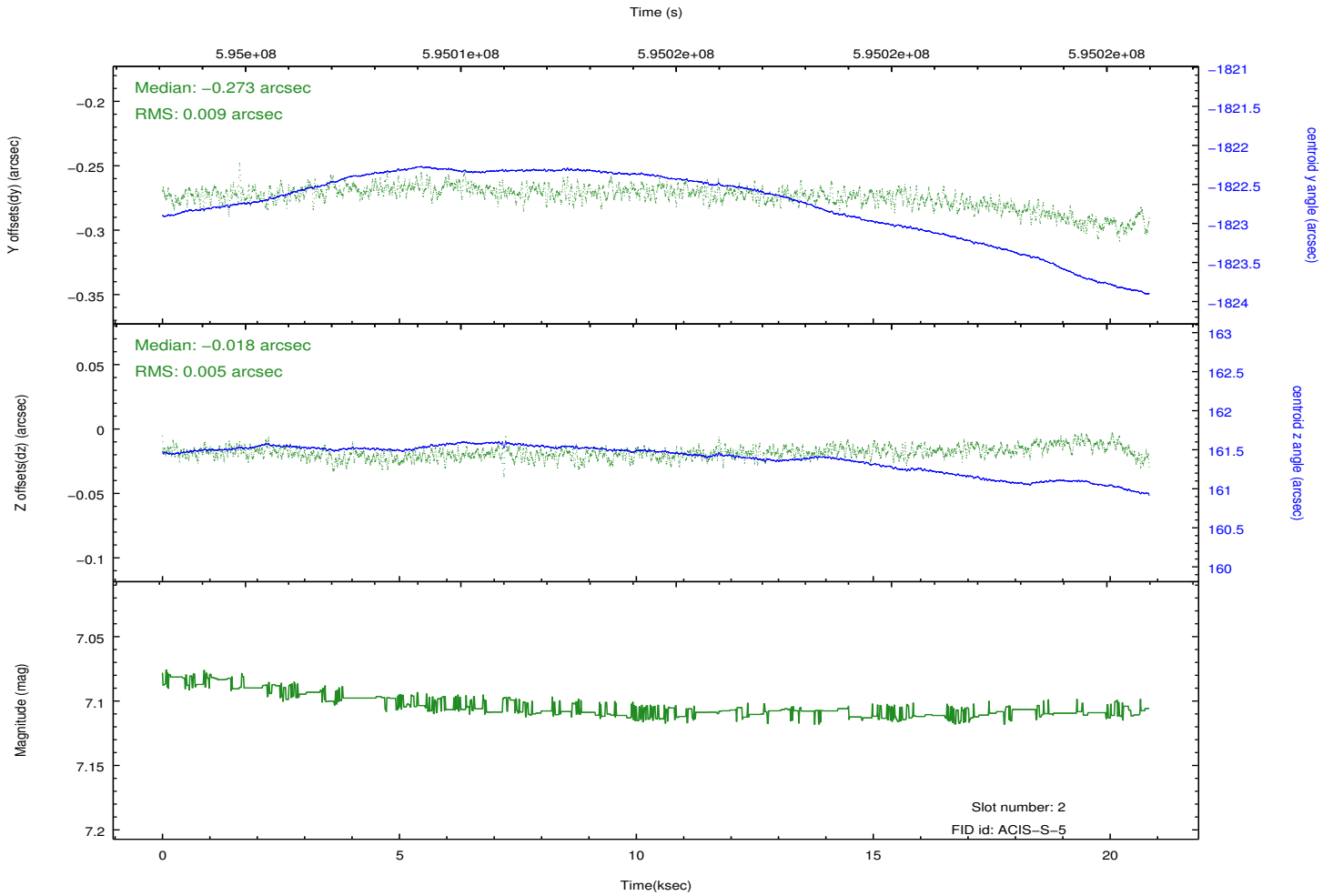
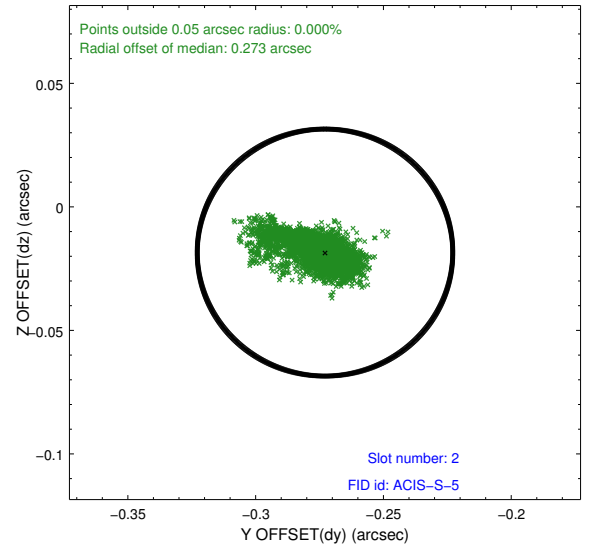
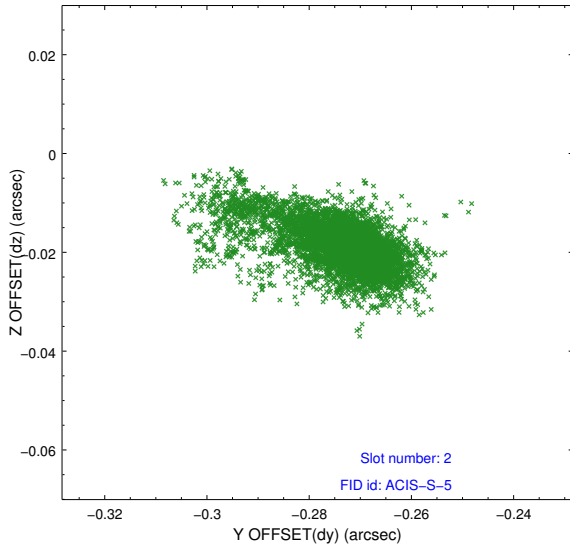
### 2.5.1 Slot 0



## 2.5.2 Slot 1



### 2.5.3 Slot 2



# A Summary

## A.1 Status

V&V Scientist	Jen Lauer
V&V Date (YYYY-MM-DD)	2016.11.09
V&V Edition	1
V&V Disposition and Status	OK
V&V Charge Time	20.063200154424

## A.2 Comments