

V&V Reference Report

L2 ASCDS Version : 10.5

Observation 17882 - L2 Version 1
Chandra X-Ray Center

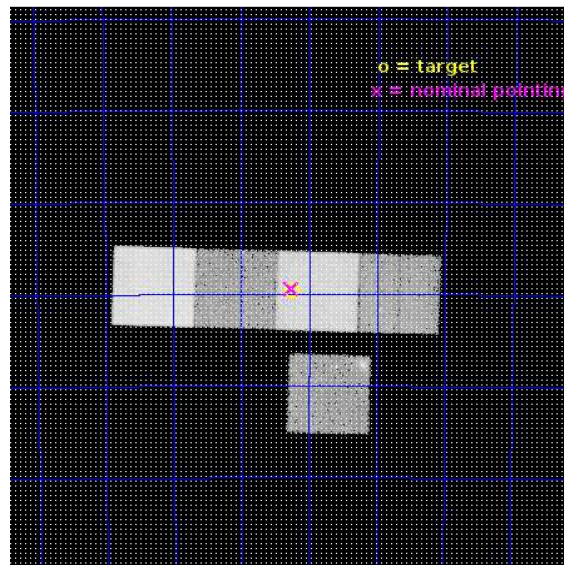
L2 Processing Date : Aug 20 2016

Contents

1	Front	2
2	OBI	3
2.1	OBI	3
2.1.1	Images	3
2.1.2	Bias	3
2.1.3	Parameters	4
2.1.4	Events	4
2.2	Compared Parameters	5
2.3	Aspect	6
2.4	Star Slots	9
2.4.1	Slot 3	9
2.4.2	Slot 4	10
2.4.3	Slot 5	11
2.4.4	Slot 6	12
2.4.5	Slot 7	13
2.5	FID Slots	14
2.5.1	Slot 0	14
2.5.2	Slot 1	15
2.5.3	Slot 2	16
A	Summary	17
A.1	Status	17
A.2	Comments	17

1 Front

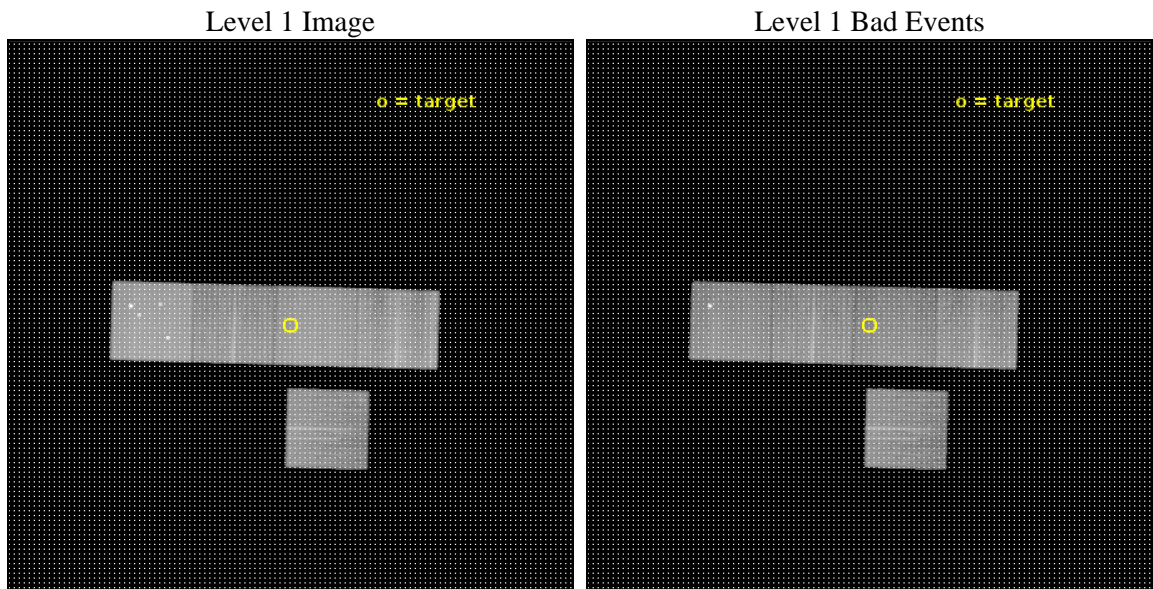
seq_num	502501	Sequence number
obs_id	17882	Observation id
title	Source of energy and pre-explosion progenitor evolution of Super-Luminous SNe	Proposal title
observer	Raffaella Margutti	Principal investigator
object	ASASSN-15lh	Source name
dtcycle	0	
cycle	P	events from which exps? Prim/Second/Both
ra_targ	330.564375	Observer's specified target RA [deg]
dec_targ	-61.659611	Observer's specified target Dec [deg]
ra_nom	330.56492424918	Nominal RA [deg]
dec_nom	-61.657109702639	Nominal Dec [deg]
roll_nom	1.7226317589184	Nominal Roll [deg]
revision	1	Processing version of data
ontime	30057.60023129	Sum of GTIs [s]
livetime	29664.875556185	Livetime [s]
ontime3	30051.318210721	Sum of GTIs [s]
ontime5	30057.60023129	Sum of GTIs [s]
ontime6	30054.459201097	Sum of GTIs [s]
ontime7	30057.60023129	Sum of GTIs [s]
ontime8	30057.60023129	Sum of GTIs [s]
l2events	309397	Number of level 2 events



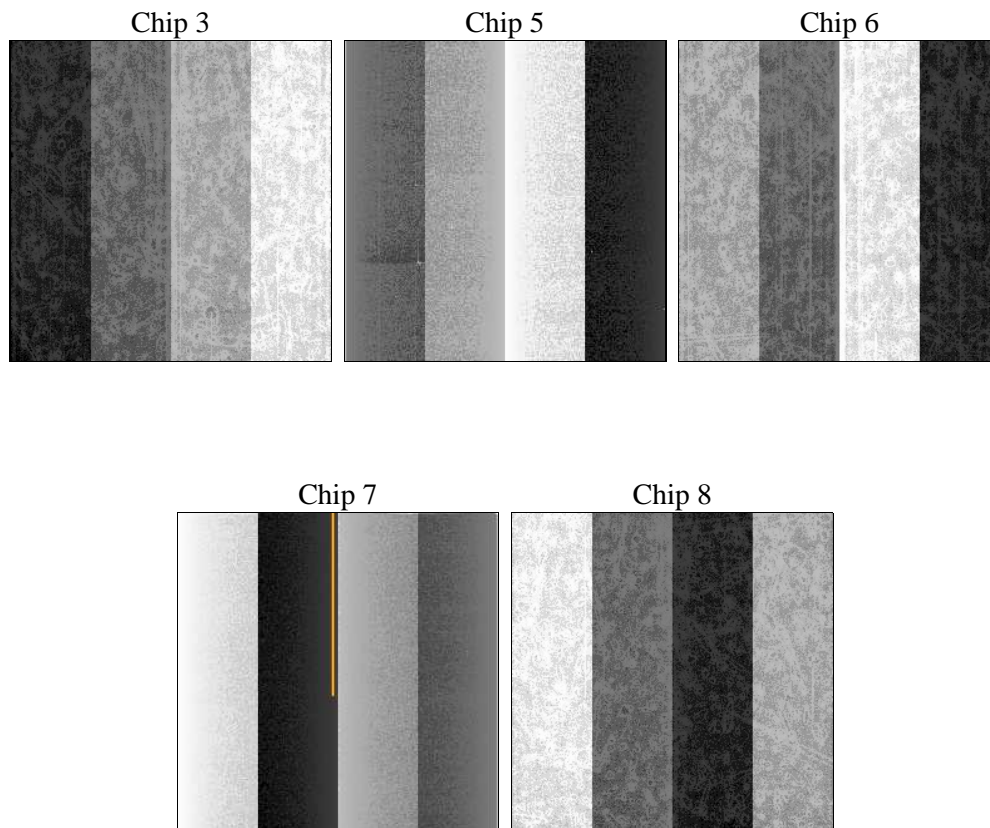
2 OBI

2.1 OBI

2.1.1 Images



2.1.2 Bias



2.1.3 Parameters

obi_num	0	Obi number	sched_exp_time	30000.000000	[s] Scheduled observation exposure time
ascdsver	10.5	Processing system revision	ontime	30057.60023129	Sum of GTIs [s]
caldbver	4.7.2	 	ontime3	30051.318210721	Sum of GTIs [s]
date	2016-08-20T16:09:18	Date and time of file creation	ontime5	30057.60023129	Sum of GTIs [s]
revision	1	Processing version of data	ontime6	30054.459201097	Sum of GTIs [s]
			ontime7	30057.60023129	Sum of GTIs [s]
			ontime8	30057.60023129	Sum of GTIs [s]
			l1events	1213634	Number of level 1 events

2.1.4 Events

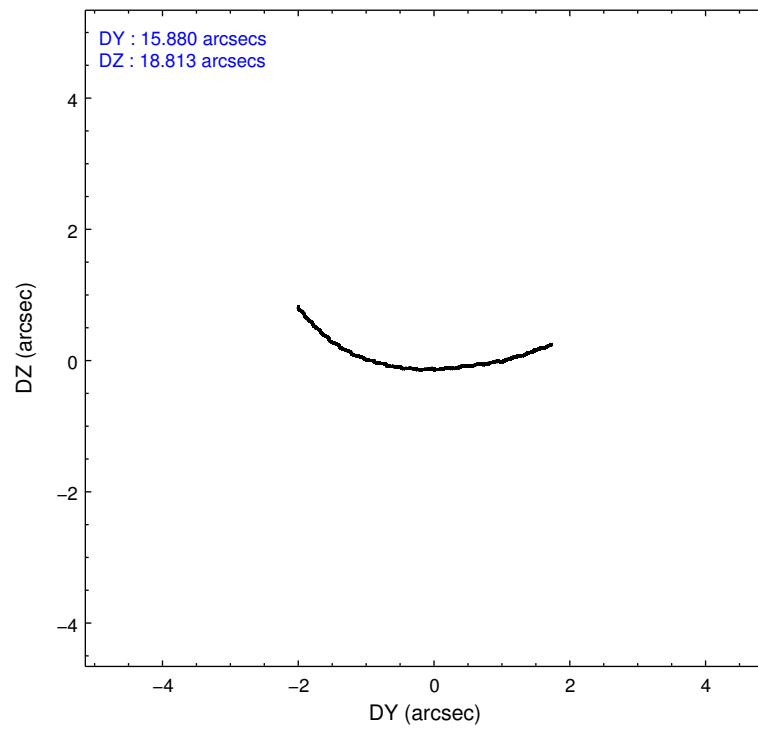
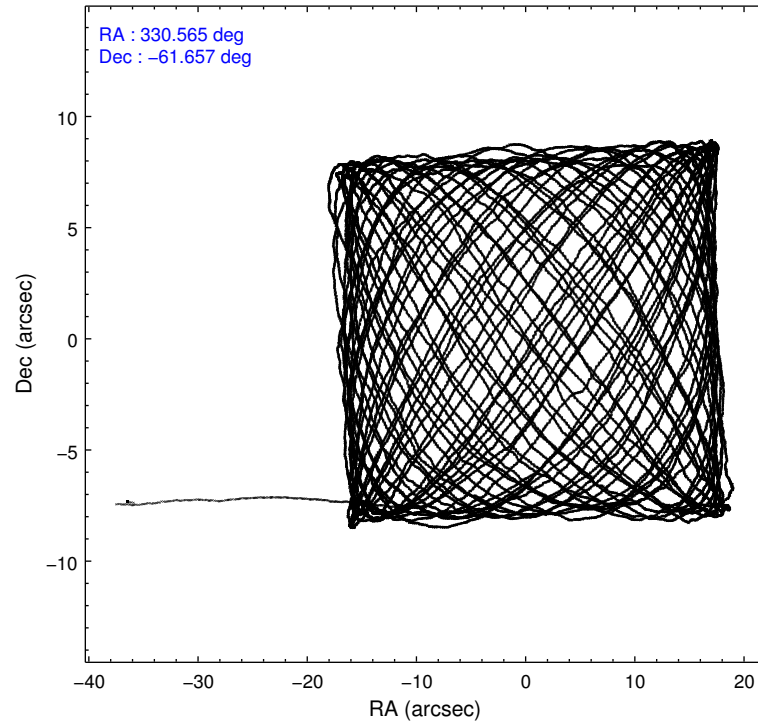
	ccd 3	ccd 5	ccd 6	ccd 7	ccd 8
level 1 events	183813	329585	195773	252258	252205
rejected events	162713	168223	173394	142521	184810
rejected %	88%	51%	88%	56%	73%

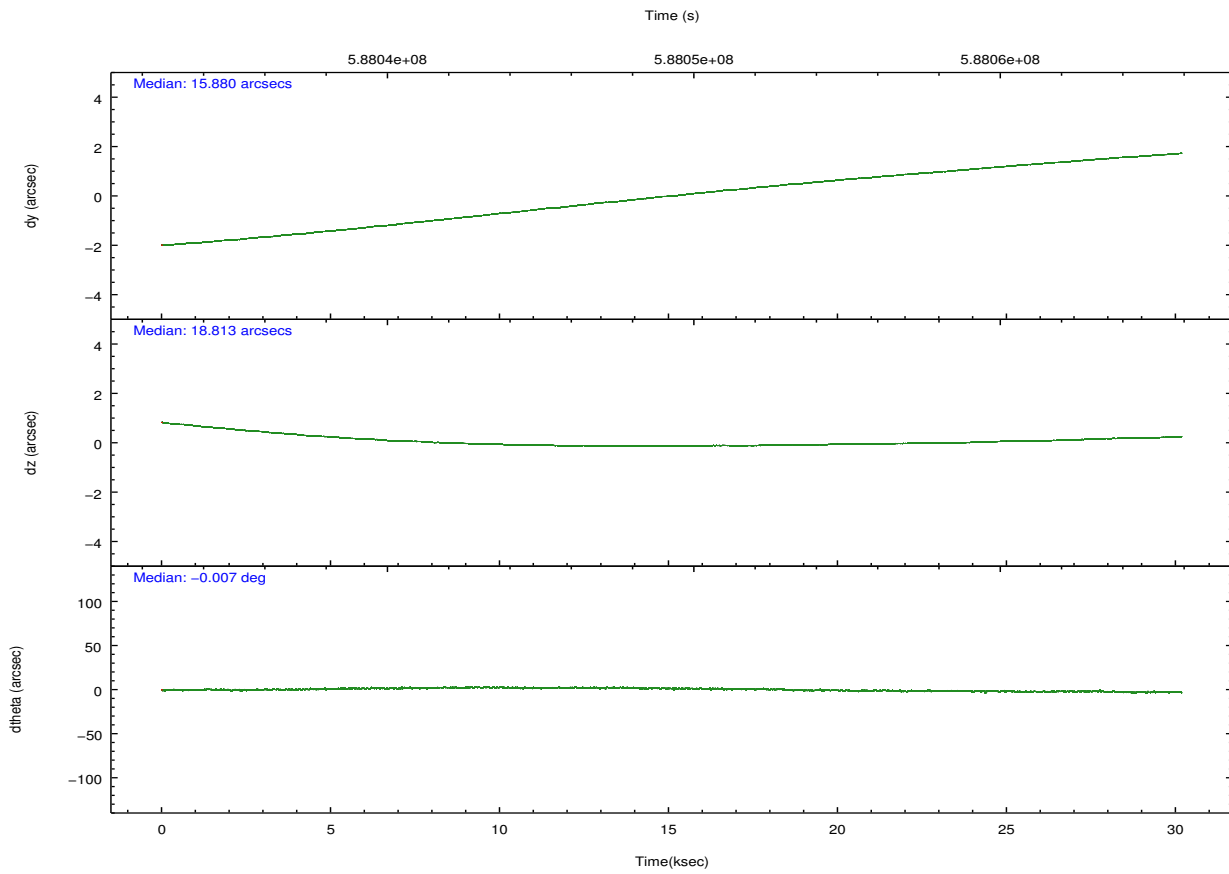
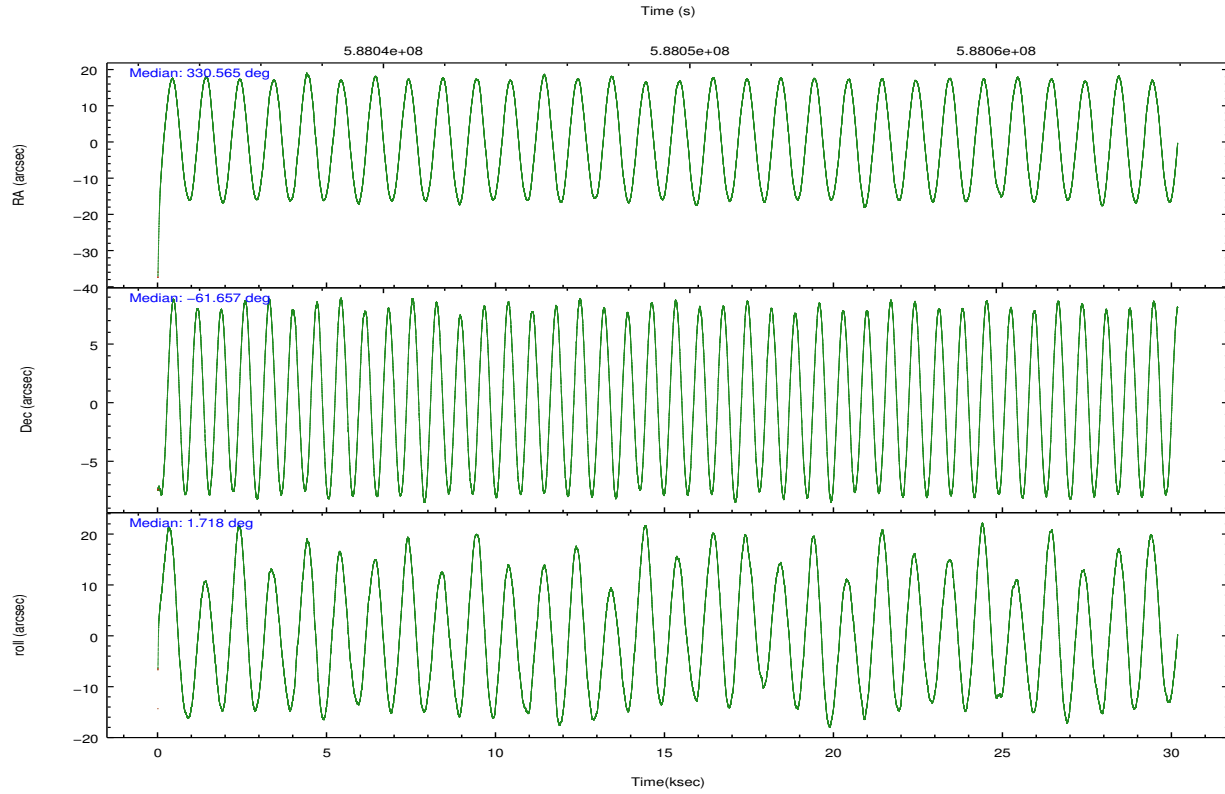
	ccd 3	ccd 5	ccd 6	ccd 7	ccd 8
grade 0 events	8117	23091	7654	9379	18972
	4%	7%	3%	3%	7%
grade 1 events	117	600	104	374	202
	0%	0%	0%	0%	0%
grade 2 events	4464	48220	5015	23089	16892
	2%	14%	2%	9%	6%
grade 3 events	2106	4706	2234	8964	6896
	1%	1%	1%	3%	2%
grade 4 events	2124	4574	2266	8713	6523
	1%	1%	1%	3%	2%
grade 5 events	9272	22365	9451	25745	13983
	5%	6%	4%	10%	5%
grade 6 events	4291	80786	5213	59603	18143
	2%	24%	2%	23%	7%
grade 7 events	153322	145243	163836	116391	170594
	83%	44%	83%	46%	67%

2.2 Compared Parameters

Parameter	Planned	Actual	Parameter	Planned	Actual
Instrument	ACIS	ACIS	Obspar format version number	7	7
Detector	ACIS-35678	ACIS-35678	Obspar file type	PREDICTED	ACTUAL
Grating	NONE	NONE	Obspar update status	NONE	UPDATED
Data mode	VFAINT	VFAINT	CCD I0 on	N	N
Observation mode	POINTING	POINTING	CCD I1 on	N	N
[deg] Pointing RA	330.516165	330.5649242491775	CCD I2 on	N	N
[deg] Pointing Dec	-61.671832	-61.65710970263911	CCD I3 on	O1	Y
[deg] Pointing Roll	1.523078	1.722631758918423	CCD S0 on	N	N
[mm] SIM focus pos	-0.684267	-0.6828225247311905	CCD S1 on	Y	Y
[mm] SIM defocus	0	0.001444936568705701	CCD S2 on	Y	Y
[mm] SIM translation stage pos	-190.132523	-190.1425803651734	CCD S3 on	Y	Y
[mm] SIM translation stage offset	0	0.01005778216563158	CCD S4 on	Y	Y
[s] Observation start time (MET)	588034362.184000	588033342.8204499	CCD S5 on	N	N
Observation start date	2016-08-19T22:51:34	2016-08-19T22:35:42	Number of optional ACIS chips dropped	0	0
[s] Observation end time (MET)	588064362.184000	588065210.07228	On-chip summing requested	N	N
Observation end date	2016-08-20T07:11:34	2016-08-20T07:26:50	Subarray requested	NONE	NONE
Read mode	TIMED	TIMED	Alternating exposures requested	N	N
			[s] Primary exposure time	0.000000	3.1

2.3 Aspect





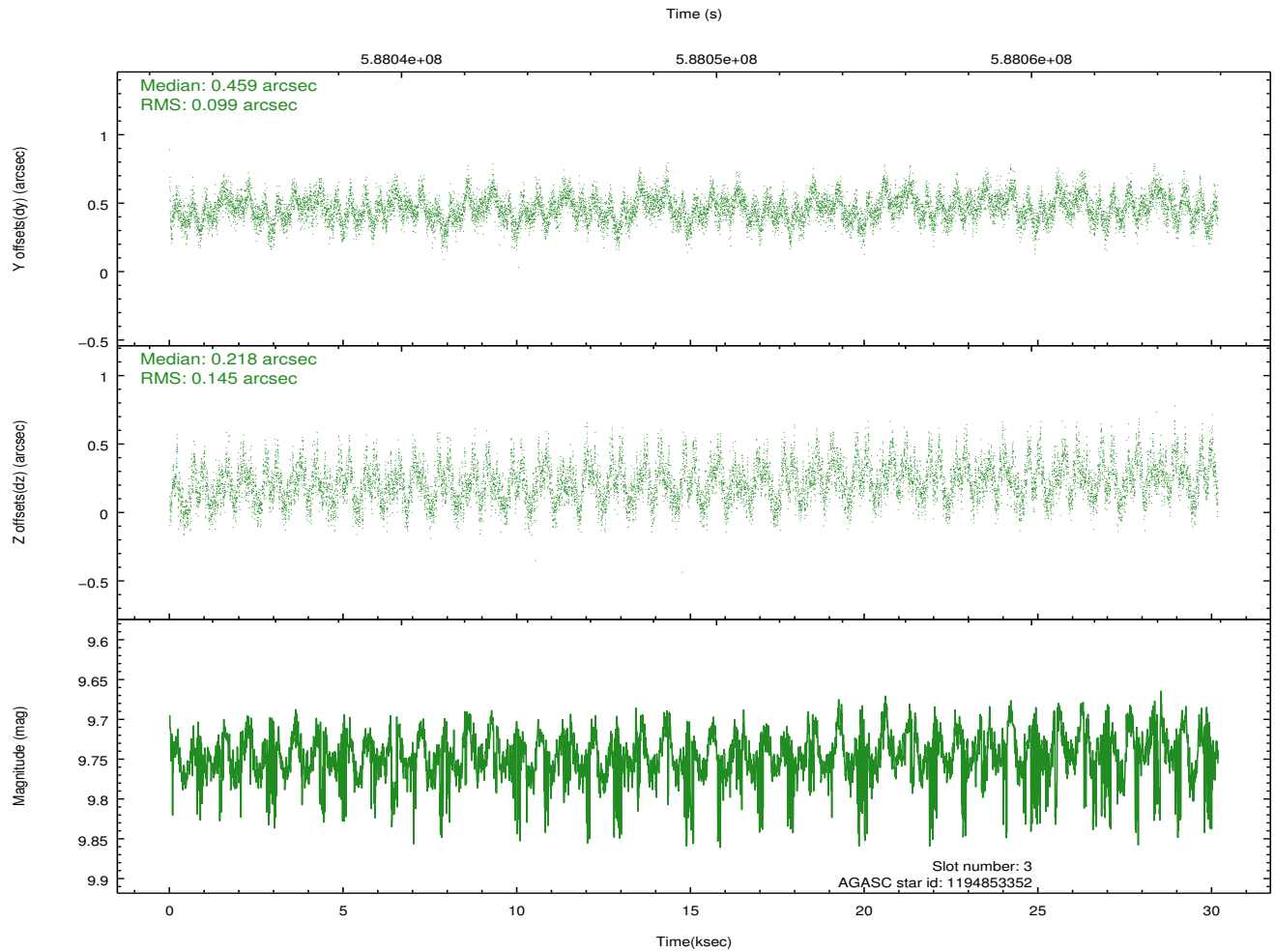
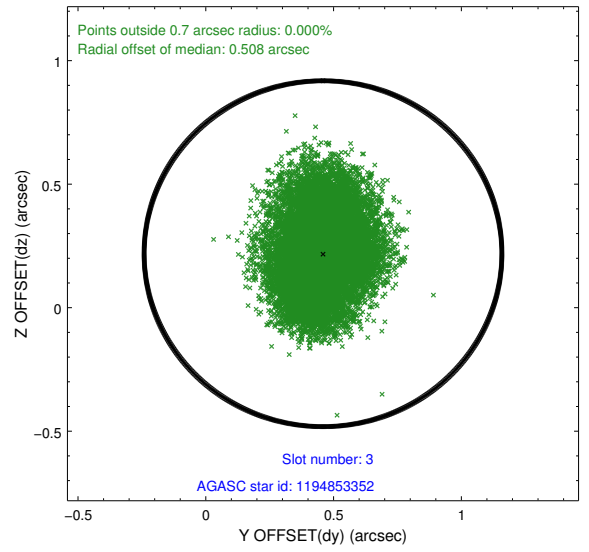
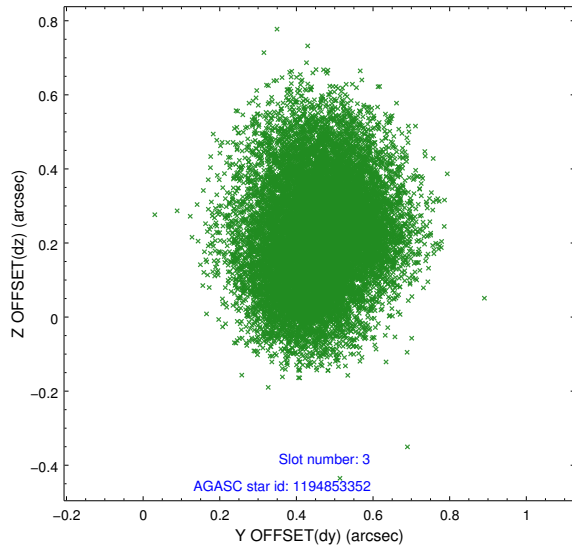
Slot Statistics

slot	status	used	id	mag	n_pts	med_dy	med_dz	dr1	dr2	ra	dec	mean_y	mean_z
0	FID		ACIS-S-1	7.07	7360	0.116	-0.029	0.017	0.036	0.000000	0.000000	927.41	-1735.96
1	FID		ACIS-S-5	7.09	7359	-0.272	0.062	0.018	0.034	0.000000	0.000000	-1822.00	161.53
2	FID		ACIS-S-6	7.22	7358	0.130	-0.022	0.013	0.024	0.000000	0.000000	392.81	805.56
3	GUIDE	used	1194853352	9.75	14702	0.459	0.218	0.189	0.300	330.194439	-62.152900	-586.40	-1717.64
4	GUIDE	used	1194857416	9.95	14695	-0.062	0.103	0.198	0.322	329.242384	-61.084030	-2161.14	2152.89
5	GUIDE	used	1194859800	9.56	14647	-0.088	-0.016	0.162	0.276	329.309824	-61.451662	-2054.42	828.66
6	GUIDE	used	1194865368	7.86	14713	-0.133	-0.024	0.101	0.170	331.076166	-61.872710	931.46	-752.25
7	GUIDE	used	1194992080	9.41	14702	-0.181	-0.282	0.181	0.273	331.833814	-61.543609	2272.23	378.19

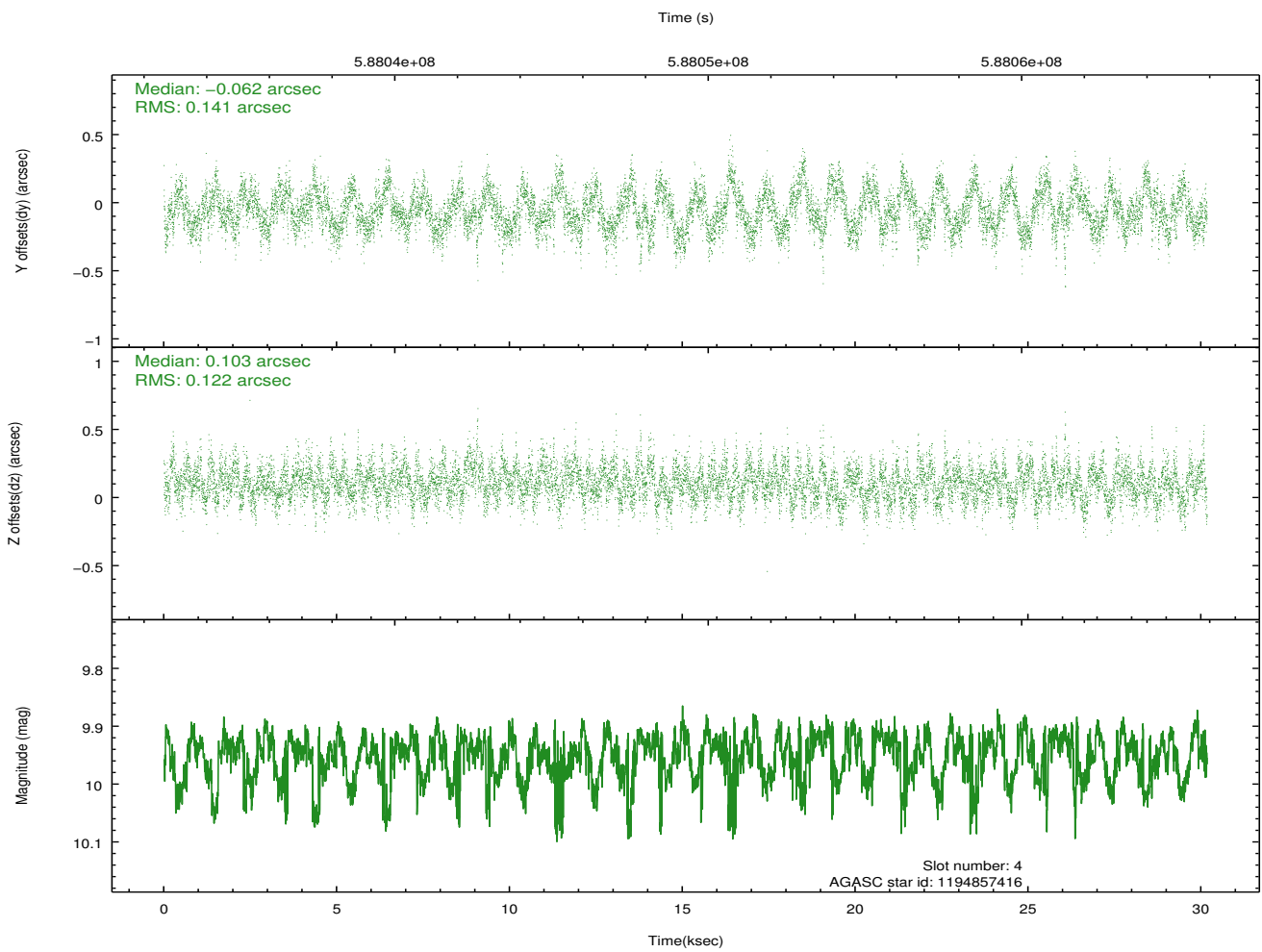
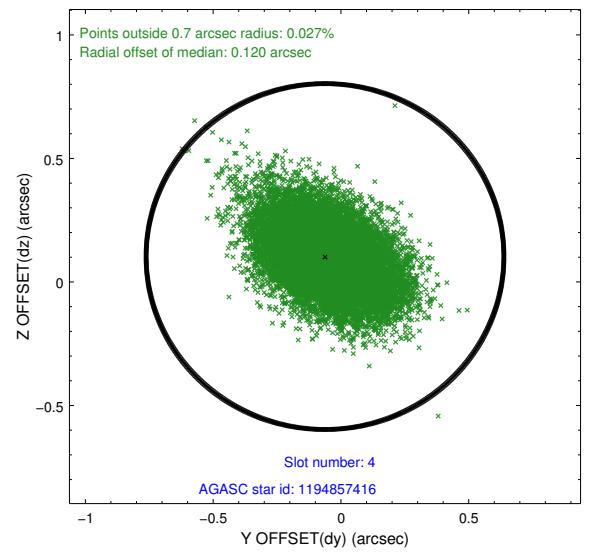
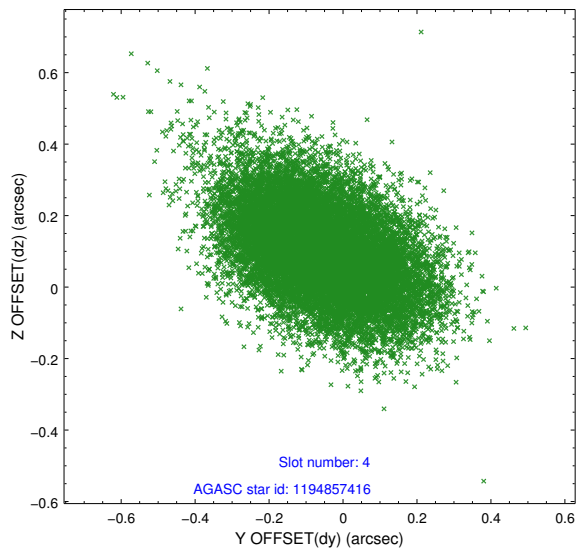
∞

2.4 Star Slots

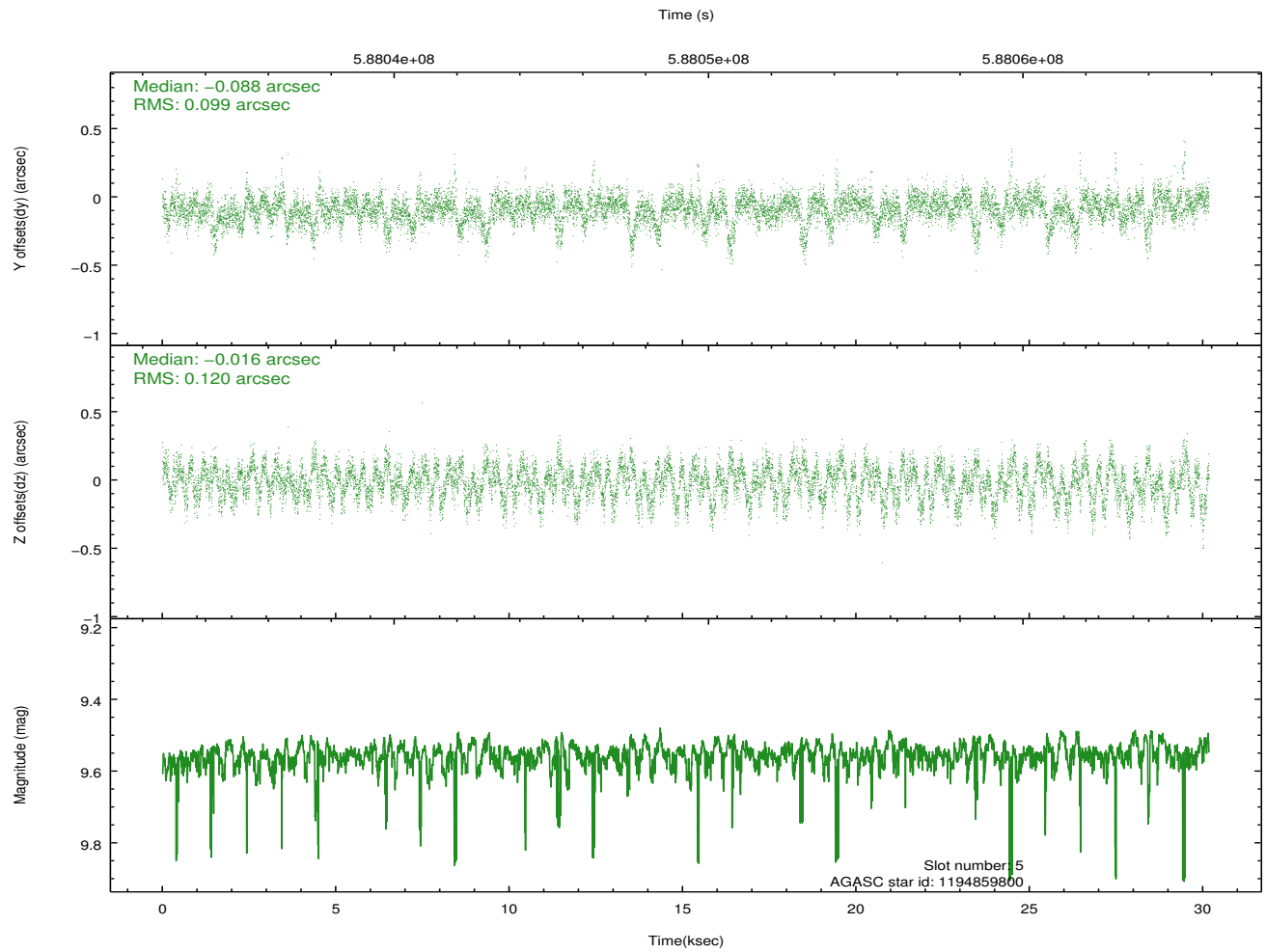
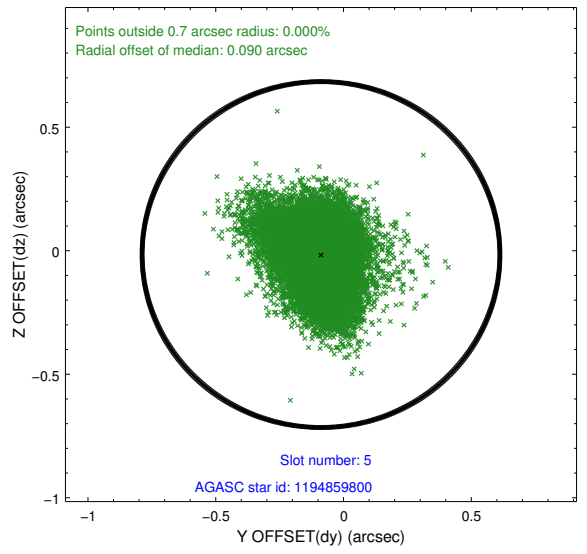
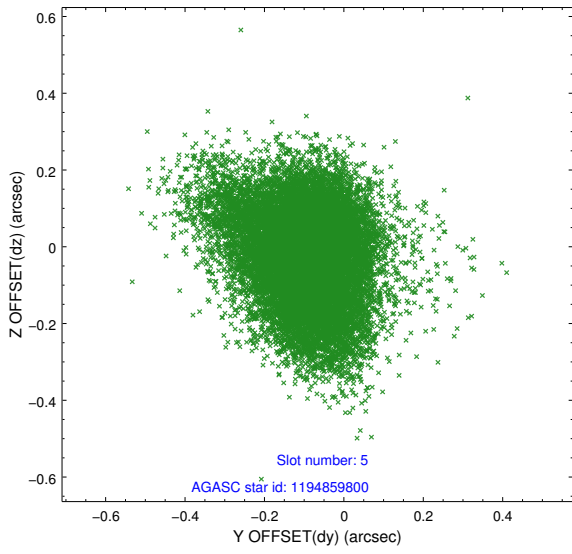
2.4.1 Slot 3



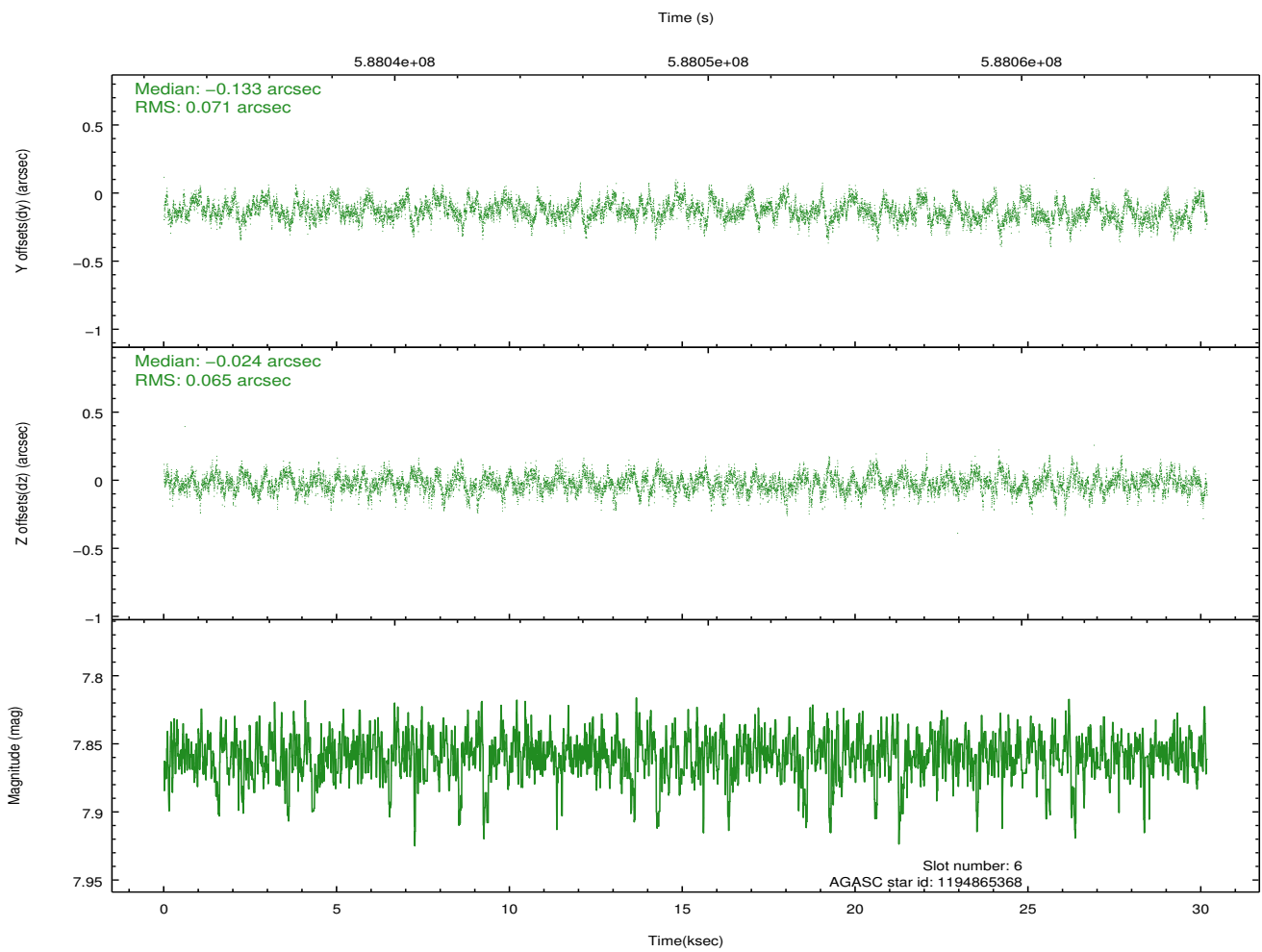
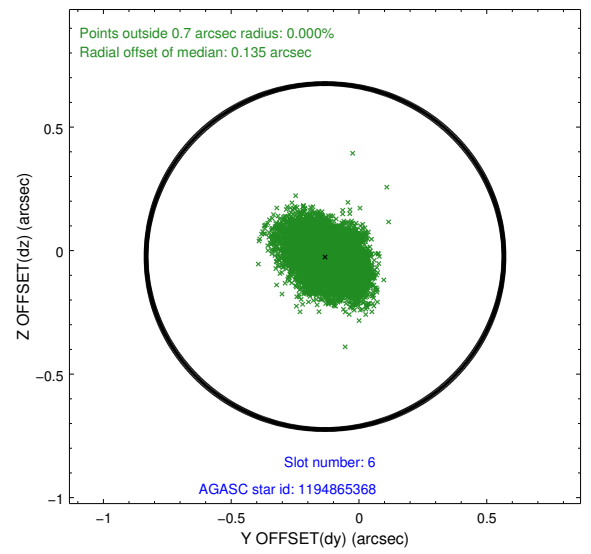
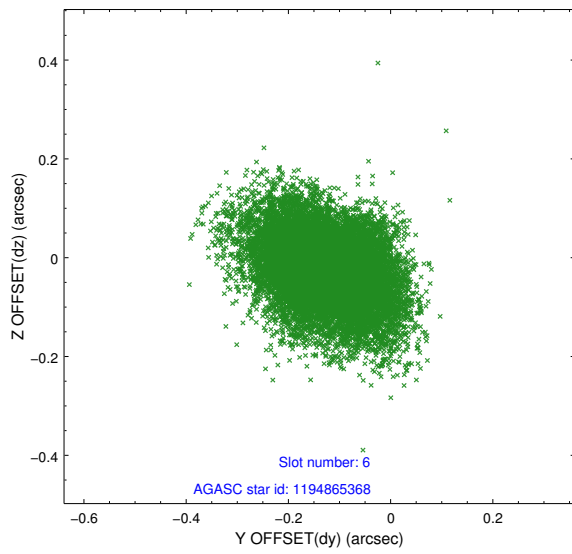
2.4.2 Slot 4



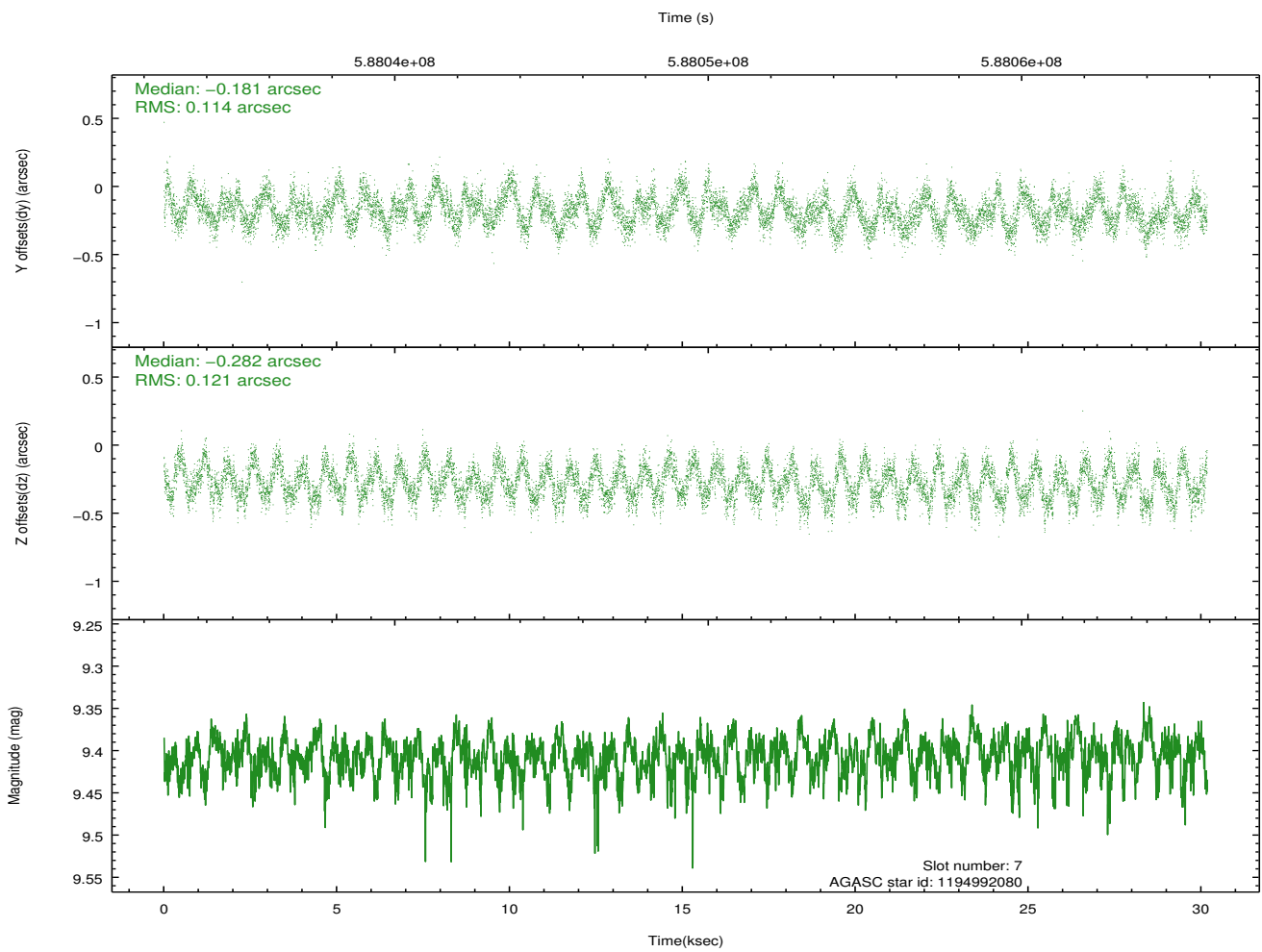
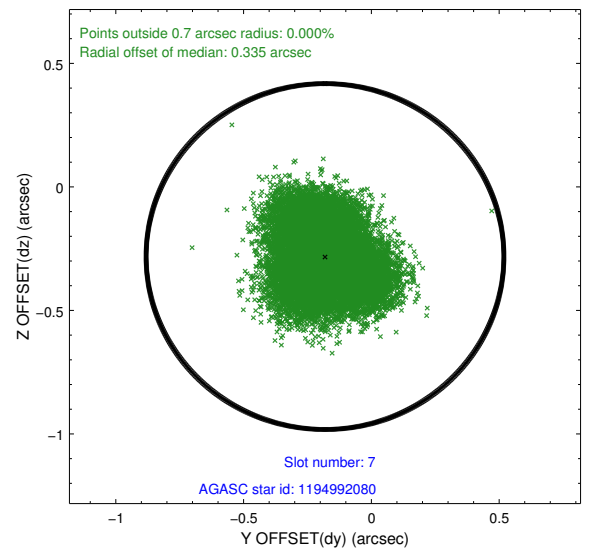
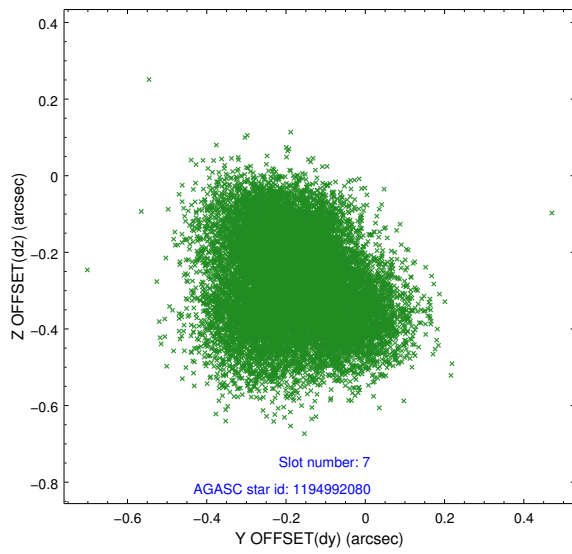
2.4.3 Slot 5



2.4.4 Slot 6

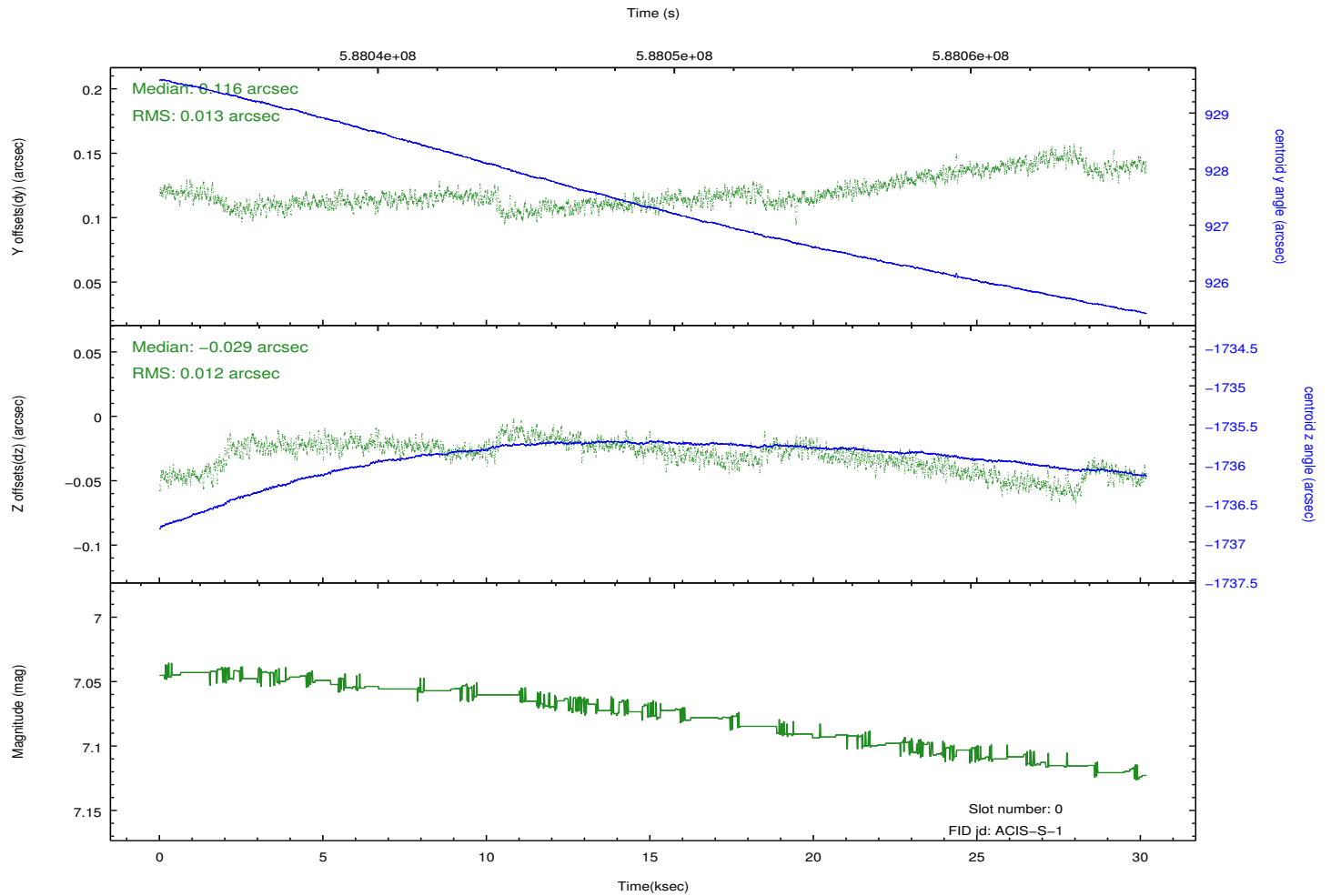
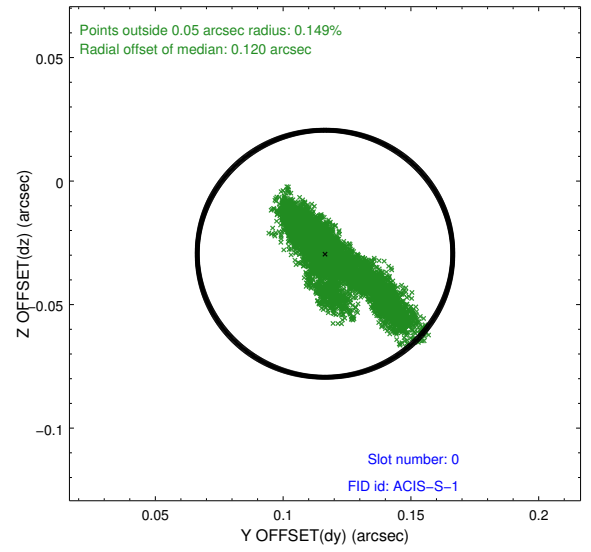
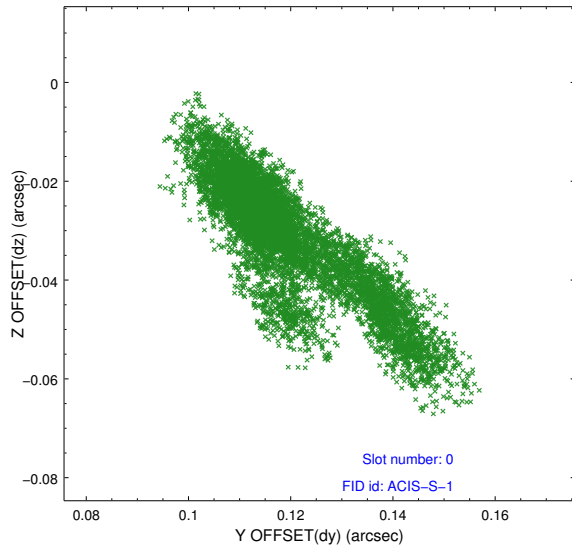


2.4.5 Slot 7

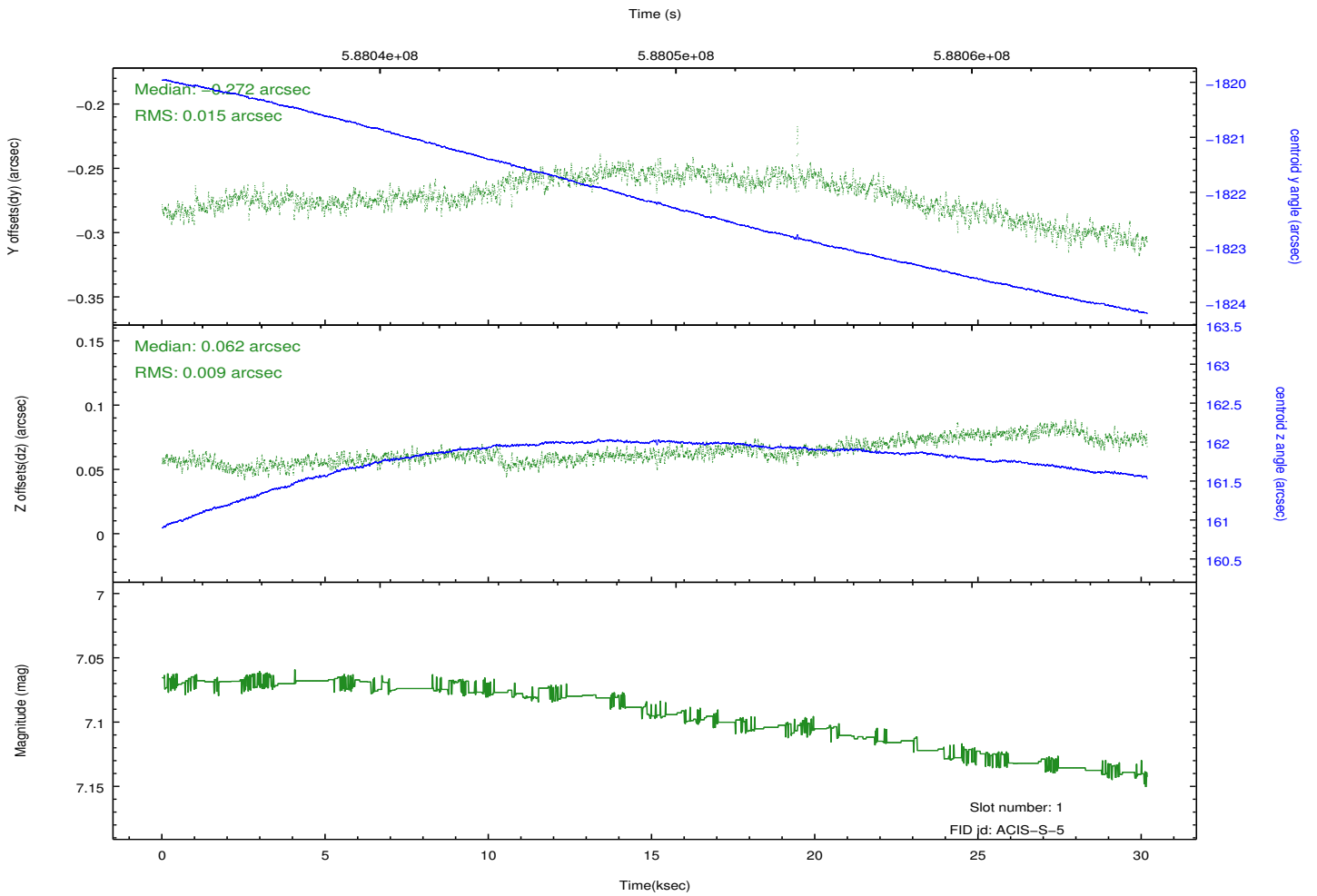
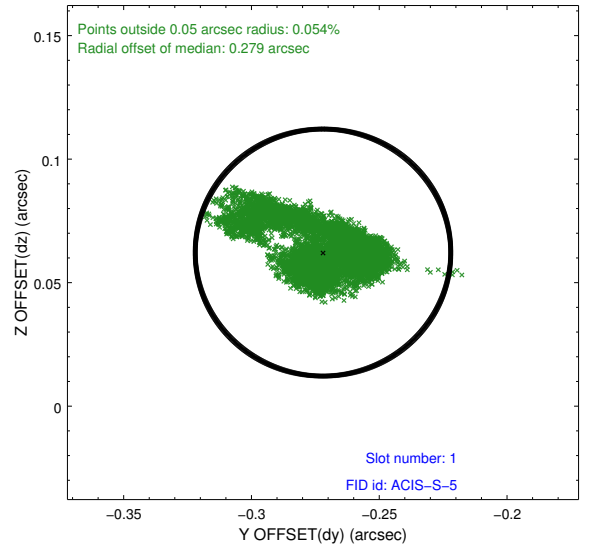
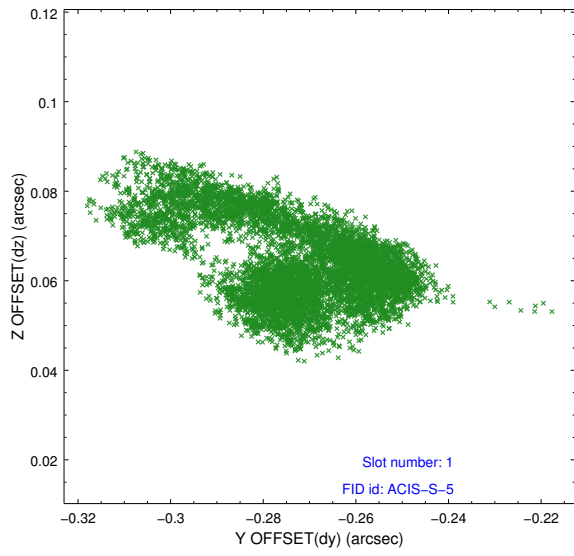


2.5 FID Slots

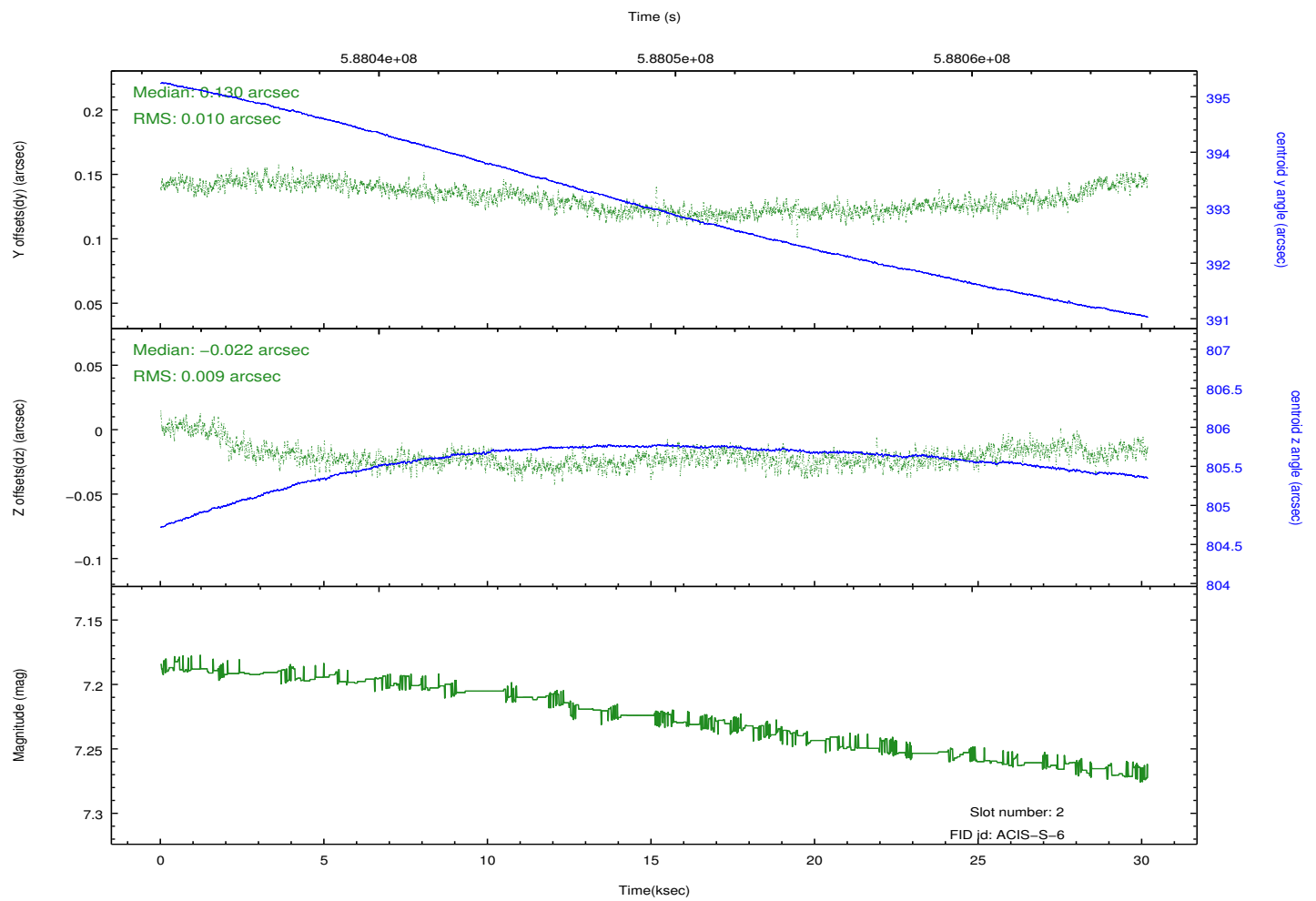
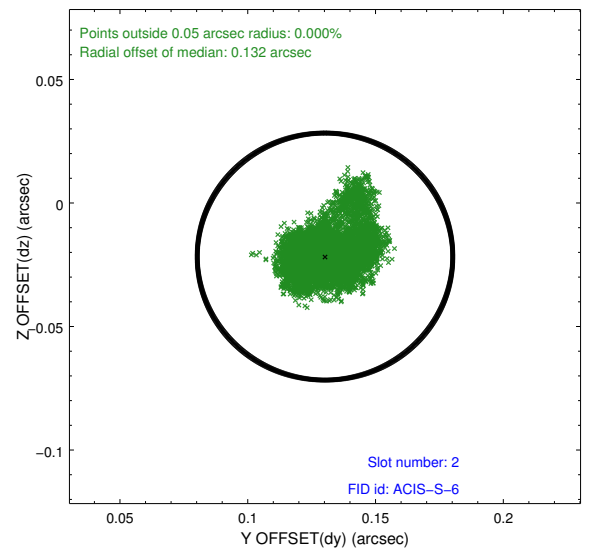
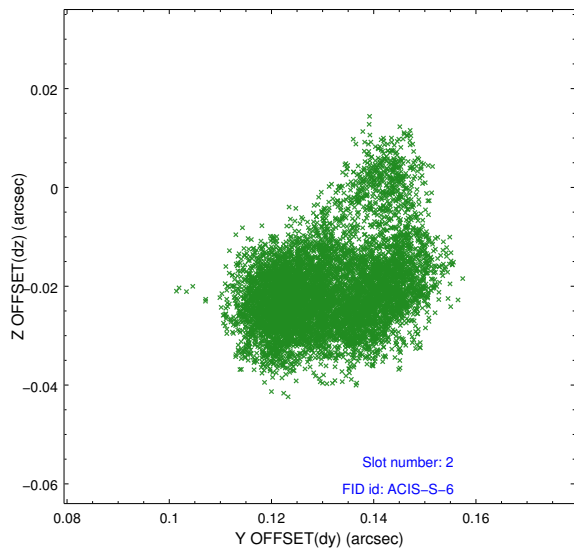
2.5.1 Slot 0



2.5.2 Slot 1



2.5.3 Slot 2



A Summary

A.1 Status

V&V Scientist	Joy Nichols
V&V Date (YYYY-MM-DD)	2016.08.22
V&V Edition	1
V&V Disposition and Status	OK
V&V Charge Time	30.05760023129

A.2 Comments