

V&V Reference Report

L2 ASCDS Version : 10.5.4

Observation 19921 - L2 Version 1
Chandra X-Ray Center

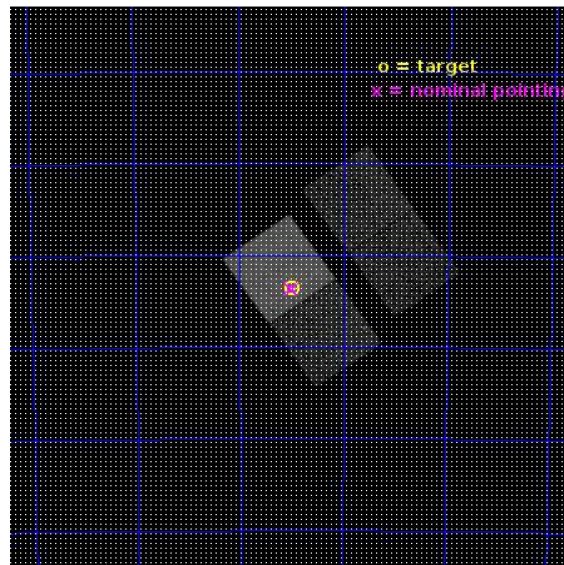
L2 Processing Date : Apr 11 2017

Contents

1	Front	2
2	OBI	3
2.1	OBI	3
2.1.1	Images	3
2.1.2	Bias	3
2.1.3	Parameters	4
2.1.4	Events	4
2.2	Compared Parameters	5
2.3	Aspect	6
2.4	Star Slots	9
2.4.1	Slot 3	9
2.4.2	Slot 4	10
2.4.3	Slot 5	11
2.4.4	Slot 6	12
2.4.5	Slot 7	13
2.5	FID Slots	14
2.5.1	Slot 0	14
2.5.2	Slot 1	15
2.5.3	Slot 2	16
A	Summary	17
A.1	Status	17
A.2	Comments	17

1 Front

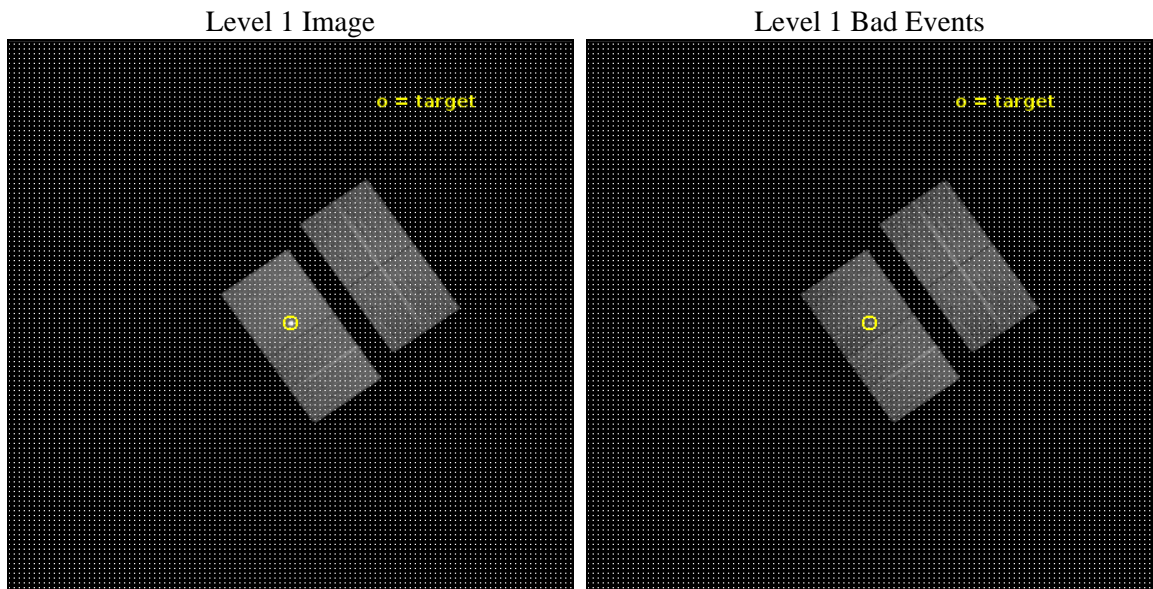
seq_num	502637	Sequence number
obs_id	19921	Observation id
title	N103B: A Type Ia Remnant with Circumstellar Interaction... Kepler's Older Cousin?	Proposal title
observer	Dr. Brian Williams	Principal investigator
object	SNR 0509-68.7	Source name
dtcycle	0	
cycle	P	events from which exps? Prim/Second/Both
ra_targ	77.245833	Observer's specified target RA [deg]
dec_targ	-68.726111	Observer's specified target Dec [deg]
ra_nom	77.25057960339	Nominal RA [deg]
dec_nom	-68.72774713734	Nominal Dec [deg]
roll_nom	235.16105283162	Nominal Roll [deg]
revision	1	Processing version of data
ontime	17068.539713383	Sum of GTIs [s]
livetime	16845.526676351	Livetime [s]
ontime2	17068.416593432	Sum of GTIs [s]
ontime3	17065.316663146	Sum of GTIs [s]
ontime6	17068.498673439	Sum of GTIs [s]
ontime7	17068.539713383	Sum of GTIs [s]
l2events	154386	Number of level 2 events



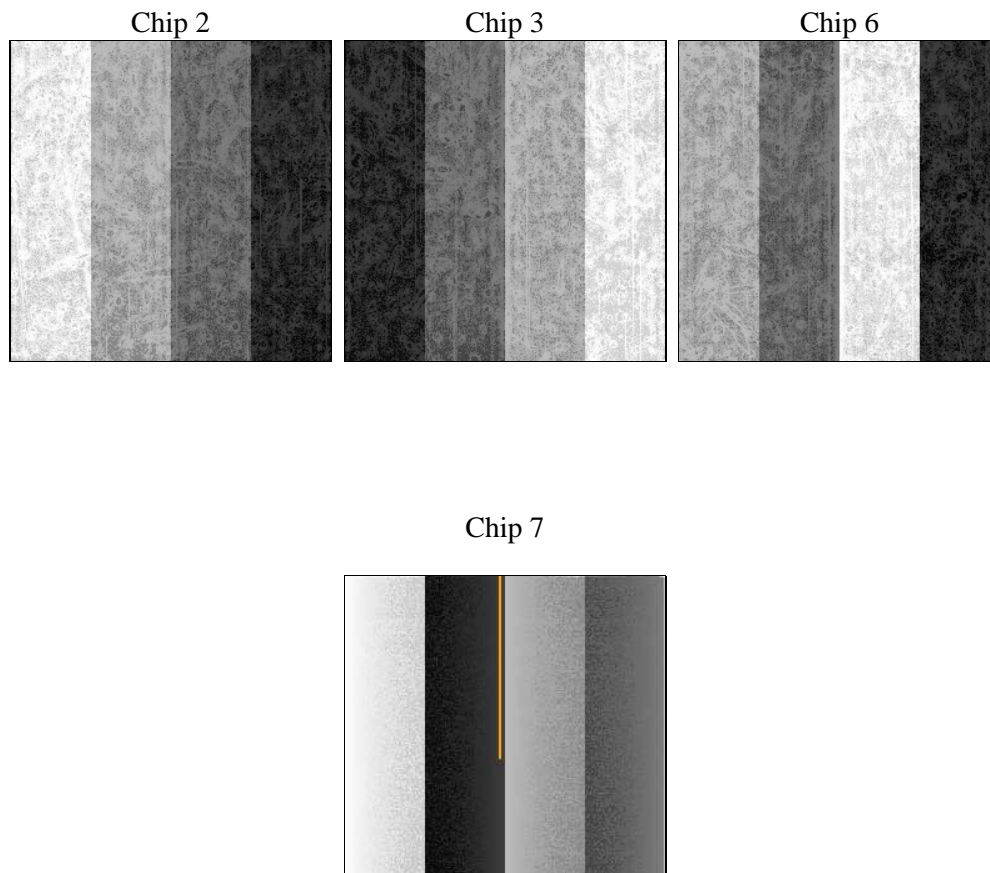
2 OBI

2.1 OBI

2.1.1 Images



2.1.2 Bias



2.1.3 Parameters

obi_num	0	Obi number	sched_exp_time	17000.000000	[s] Scheduled observation exposure time
ascdsver	10.5.4	Processing system revision	ontime	17068.539713383	Sum of GTIs [s]
caldsver	4.7.3	 	ontime2	17068.416593432	Sum of GTIs [s]
date	2017-04-11T17:52:49	Date and time of file creation	ontime3	17065.316663146	Sum of GTIs [s]
revision	1	Processing version of data	ontime6	17068.498673439	Sum of GTIs [s]
			ontime7	17068.539713383	Sum of GTIs [s]
			l1events	567891	Number of level 1 events

2.1.4 Events

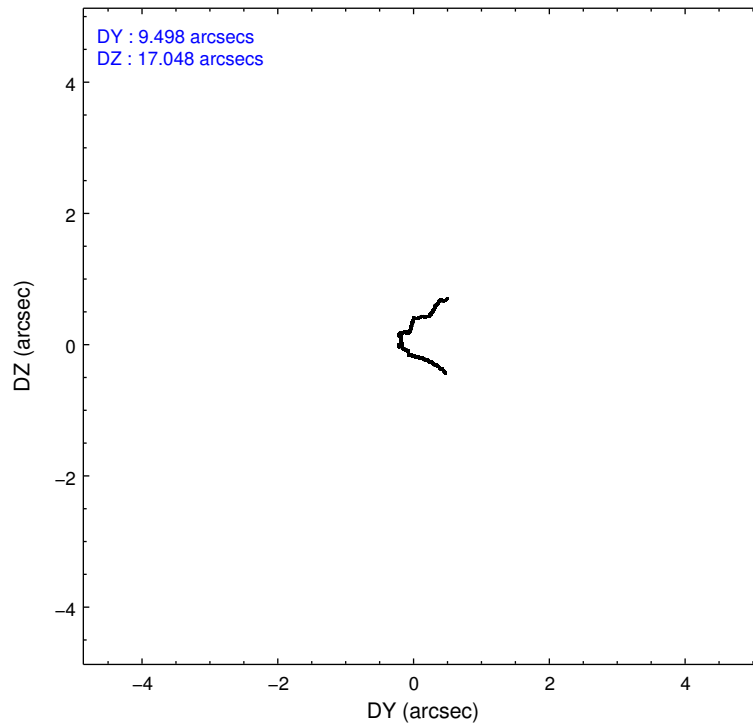
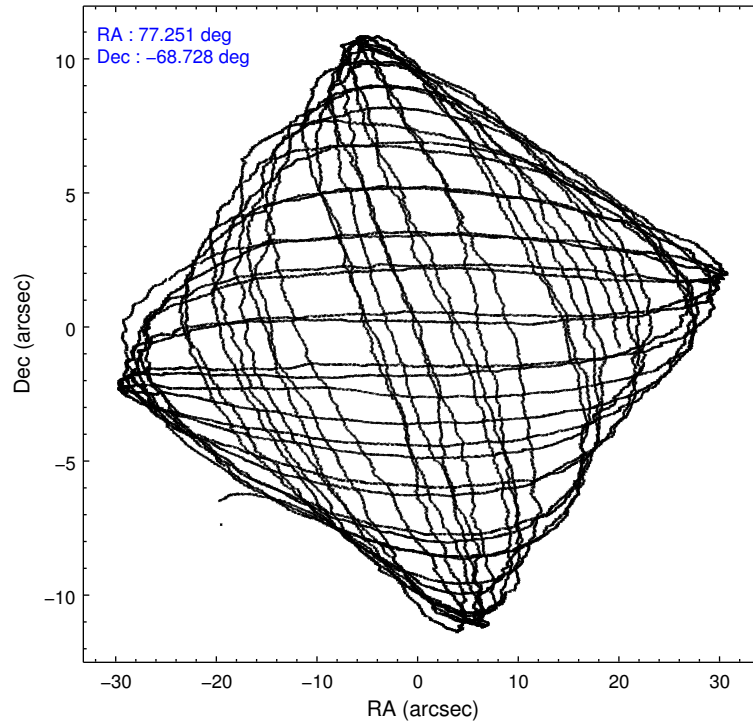
	ccd 2	ccd 3	ccd 6	ccd 7
level 1 events	117626	115015	126368	208882
rejected events	104696	102156	111960	87588
rejected %	89%	88%	88%	41%

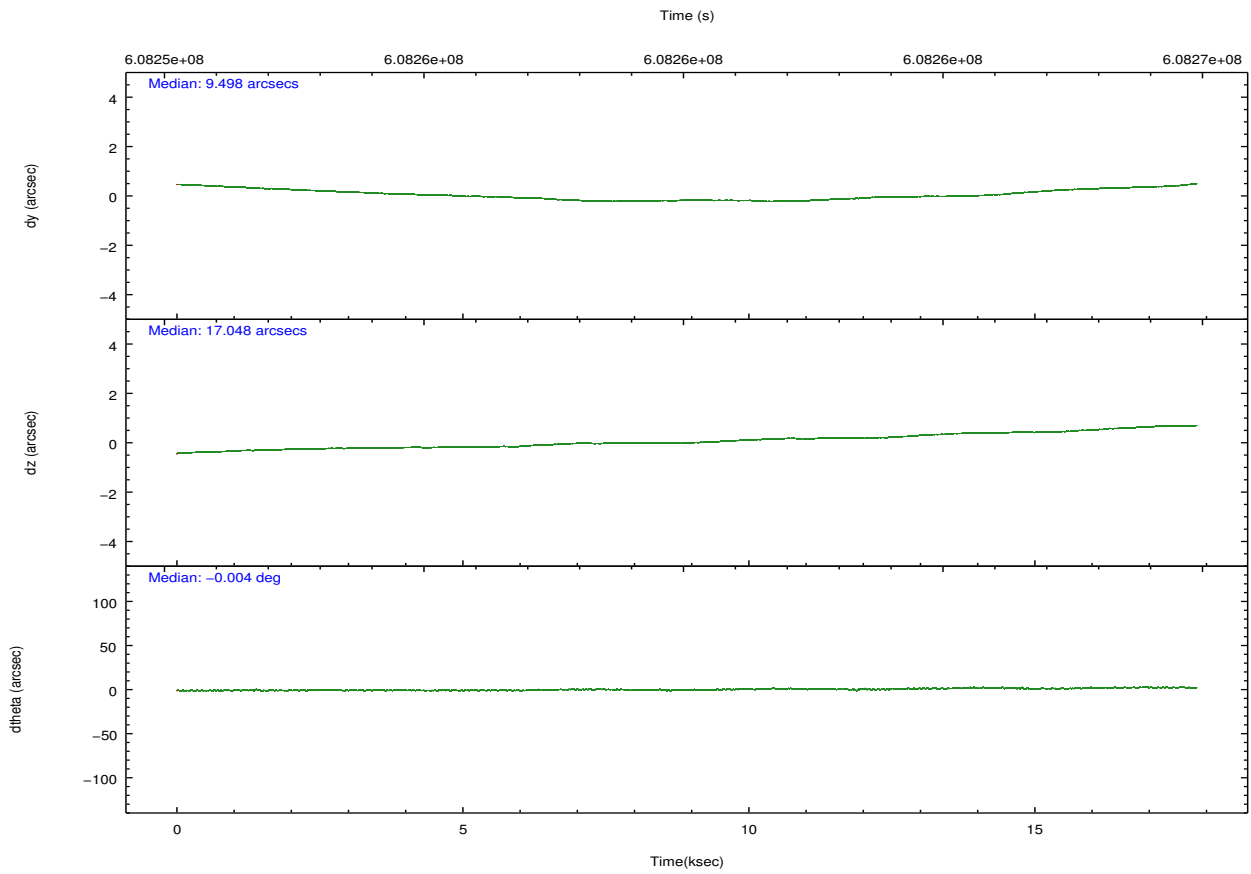
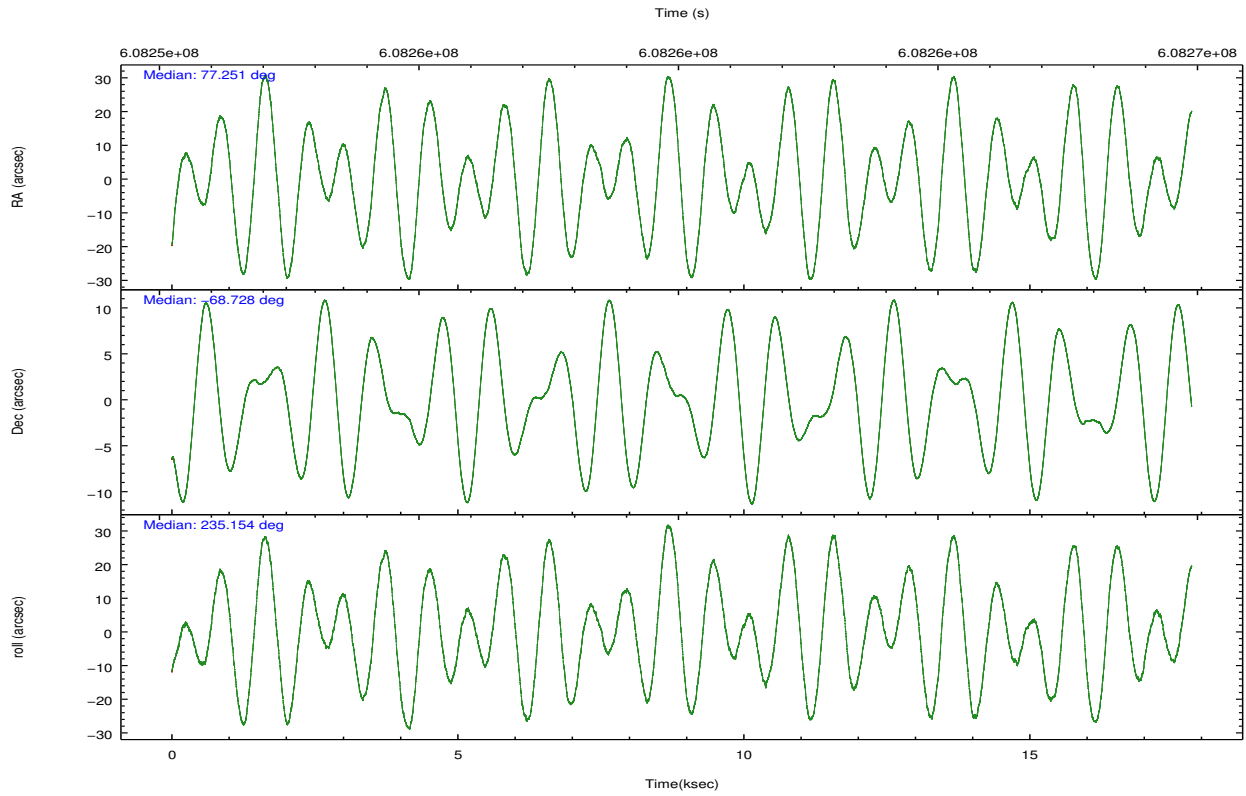
	ccd 2	ccd 3	ccd 6	ccd 7
grade 0 events	4852	4863	5175	20476
	4%	4%	4%	9%
grade 1 events	58	60	59	484
	0%	0%	0%	0%
grade 2 events	3055	2731	3295	29129
	2%	2%	2%	13%
grade 3 events	1336	1304	1361	11819
	1%	1%	1%	5%
grade 4 events	1236	1313	1397	11792
	1%	1%	1%	5%
grade 5 events	4605	5490	5688	16073
	3%	4%	4%	7%
grade 6 events	2455	2650	3185	48118
	2%	2%	2%	23%
grade 7 events	100029	96604	106208	70991
	85%	83%	84%	33%

2.2 Compared Parameters

Parameter	Planned	Actual	Parameter	Planned	Actual
Instrument	ACIS	ACIS	Obspar format version number	7	7
Detector	ACIS-2367	ACIS-2367	Obspar file type	PREDICTED	ACTUAL
Grating	NONE	NONE	Obspar update status	NONE	UPDATED
Data mode	FAINT	FAINT	Number of optional ACIS chips dropped	0	0
Observation mode	POINTING	POINTING	On-chip summing requested	N	N
[deg] Pointing RA	77.255953	77.25057960338981	Subarray requested	NONE	NONE
[deg] Pointing Dec	-68.700370	-68.72774713734036	Alternating exposures requested	N	N
[deg] Pointing Roll	235.009437	235.1610528316247	[s] Primary exposure time	0.000000	3.1
[mm] SIM focus pos	-0.684267	-0.6828225247311905			
[mm] SIM defocus	0	0.001444936568705701			
[mm] SIM translation stage pos	-190.132523	-190.1400660498719			
[mm] SIM translation stage offset	0	0.00754346686406393			
[s] Observation start time (MET)	608251979.184000	608250436.81392			
Observation start date	2017-04-10T22:51:50	2017-04-10T22:27:16			
[s] Observation end time (MET)	608268979.184000	608269882.60255			
Observation end date	2017-04-11T03:35:10	2017-04-11T03:51:22			
Read mode	TIMED	TIMED			

2.3 Aspect





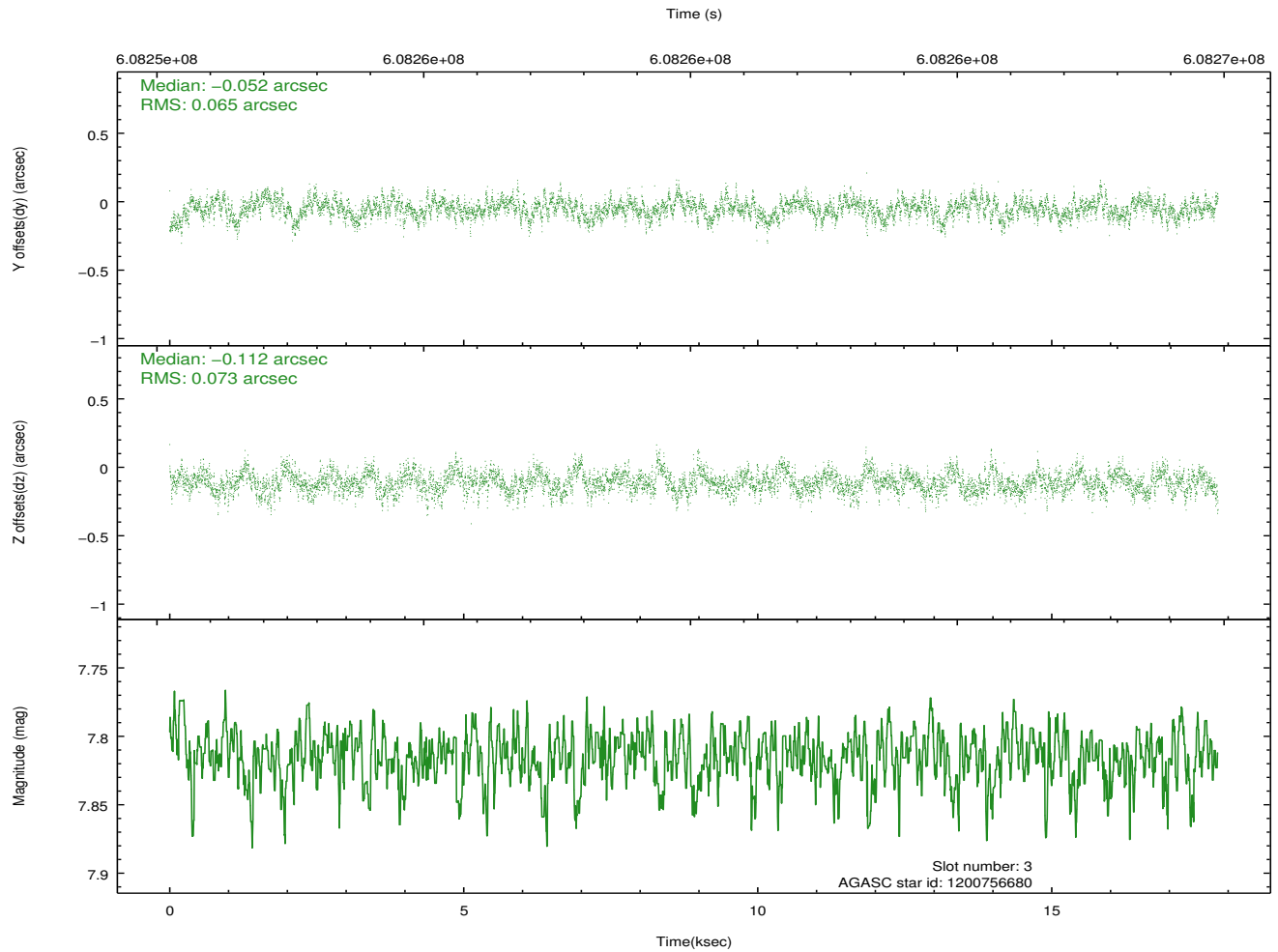
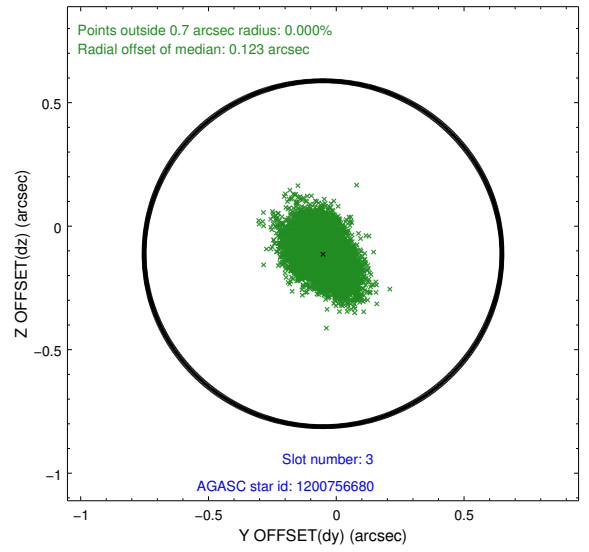
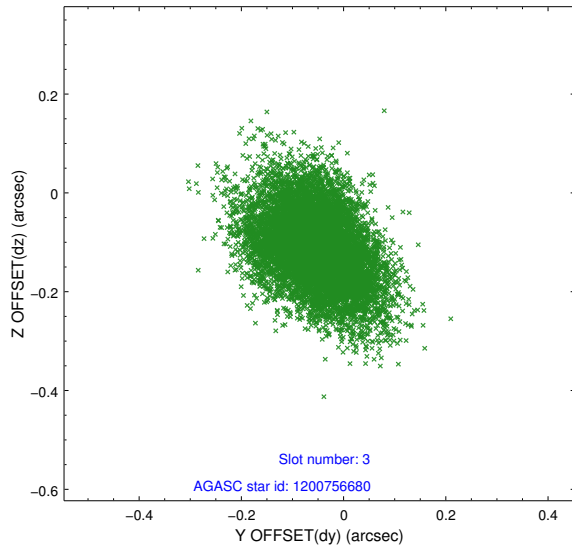
Slot Statistics

slot	status	used	id	mag	n_pts	med_dy	med_dz	dr1	dr2	ra	dec	mean_y	mean_z
0	FID		ACIS-S-2	7.01	4349	-0.143	-0.073	0.011	0.018	0.000000	0.000000	-762.52	-1738.64
1	FID		ACIS-S-4	7.12	4348	0.375	0.089	0.011	0.019	0.000000	0.000000	2151.18	169.76
2	FID		ACIS-S-5	7.12	4349	-0.263	-0.007	0.010	0.016	0.000000	0.000000	-1815.18	163.61
3	GUIDE	used	1200756680	7.81	8697	-0.052	-0.112	0.103	0.171	76.219475	-68.900351	1370.42	-679.89
4	GUIDE	used	1200758760	8.28	8697	0.084	0.311	0.090	0.150	76.277764	-68.086435	-1047.62	-2337.82
5	GUIDE	used	1200759272	8.39	8691	0.045	0.142	0.095	0.163	75.444915	-68.988718	2219.46	-1299.56
6	GUIDE	used	1200886248	8.38	8690	-0.209	-0.124	0.115	0.201	79.513576	-68.465750	-2357.35	1990.20
7	GUIDE	used	1201280984	7.00	8695	0.138	-0.219	0.106	0.172	77.867422	-69.546090	2056.33	2378.84

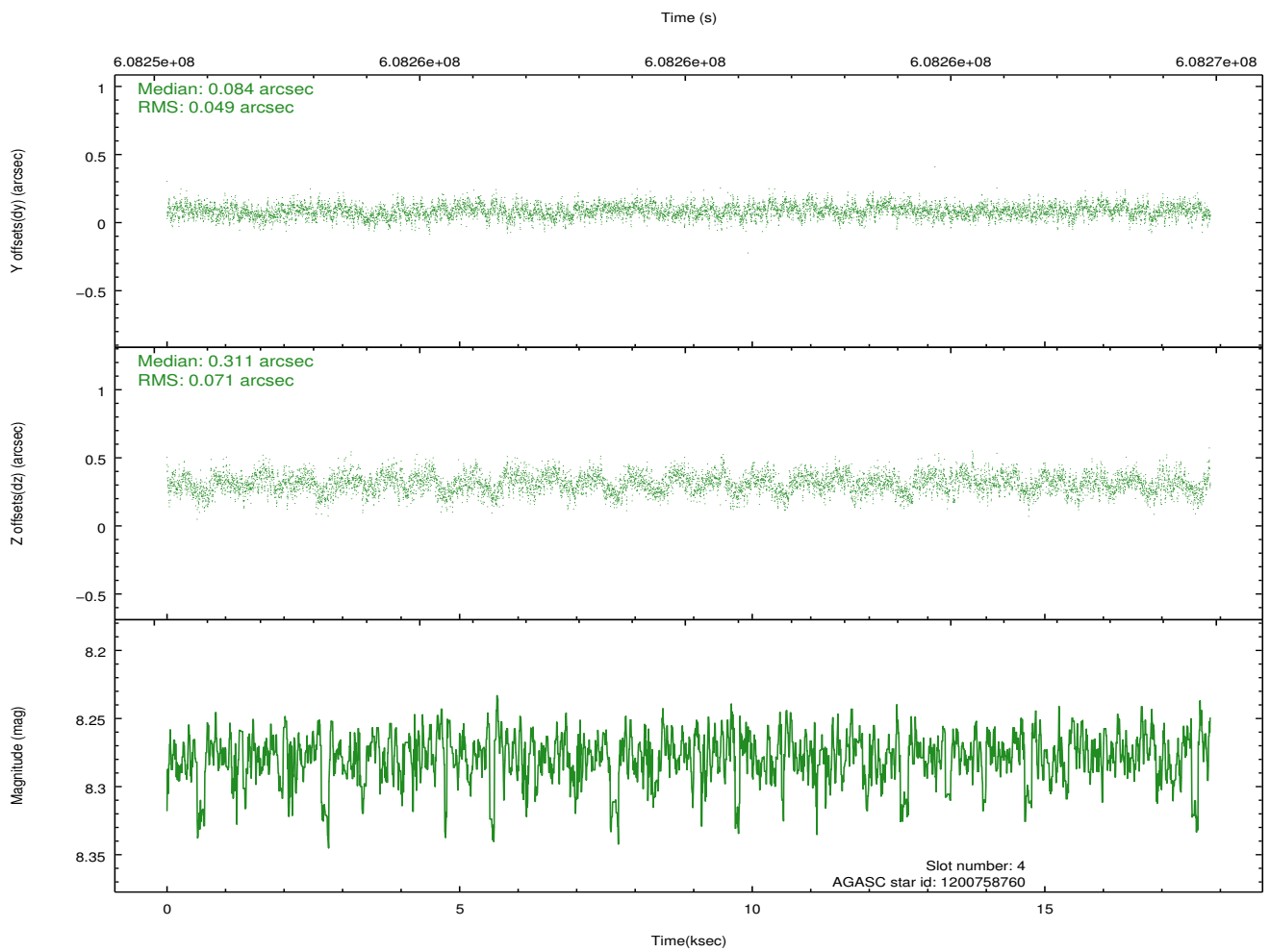
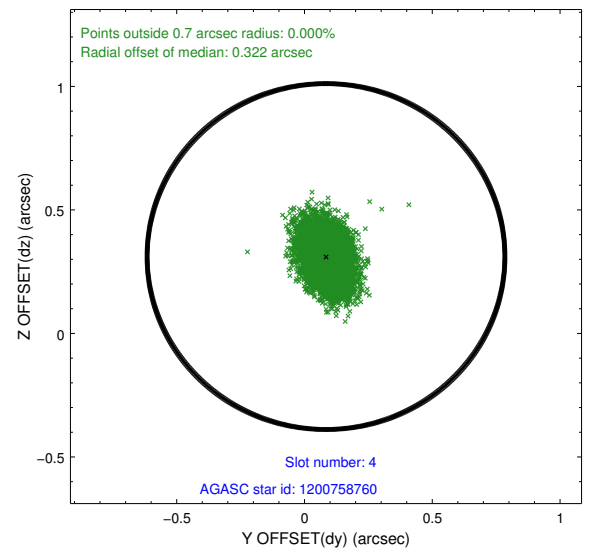
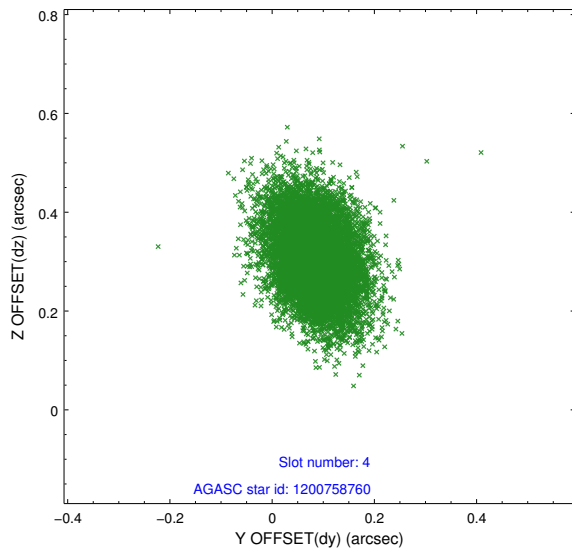
∞

2.4 Star Slots

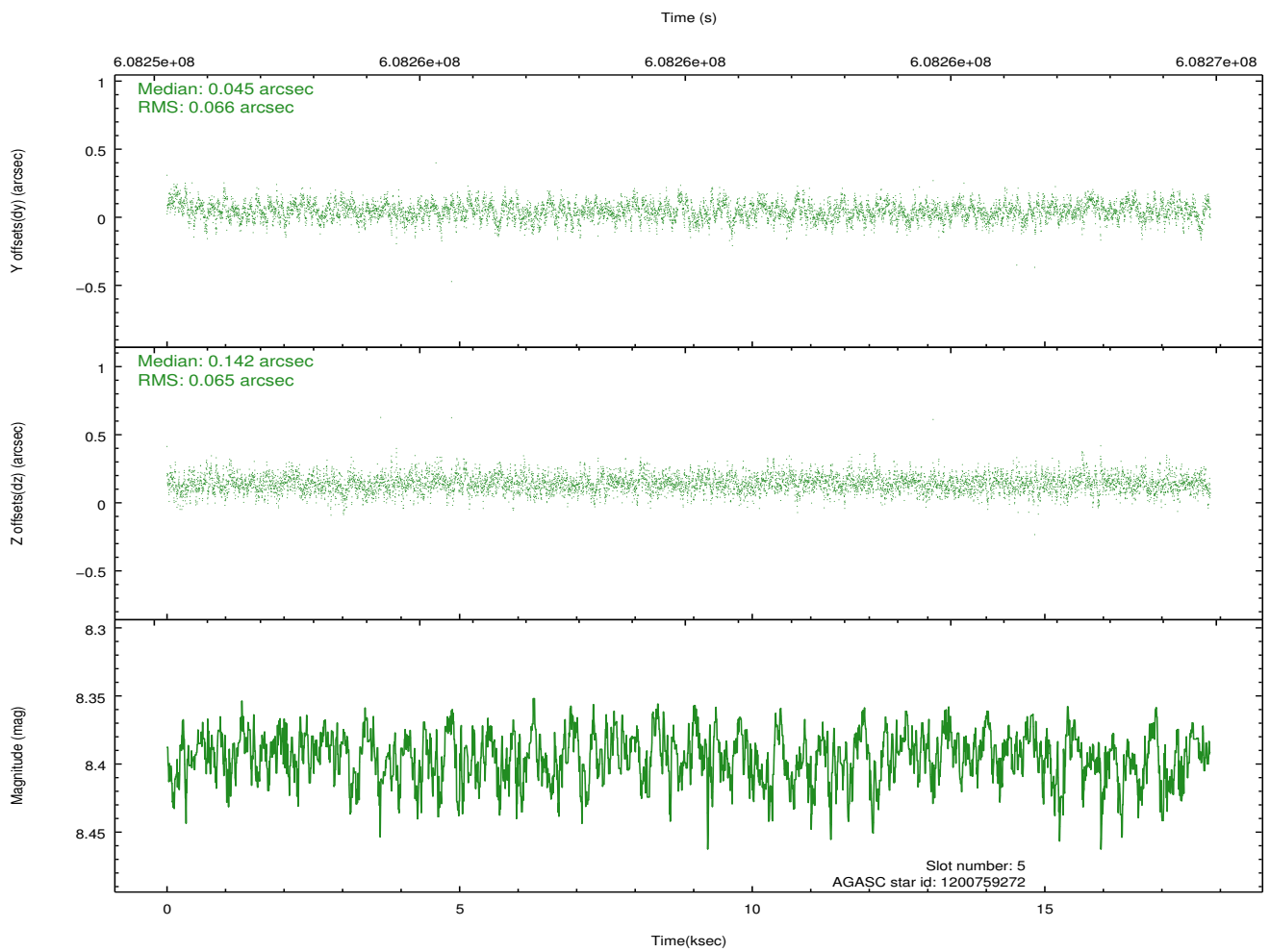
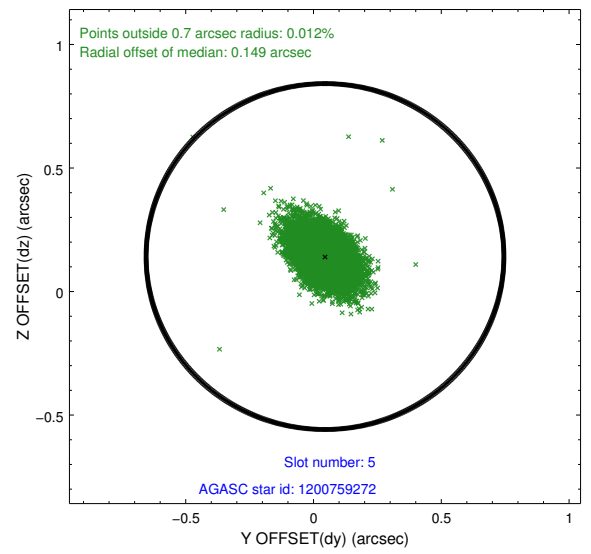
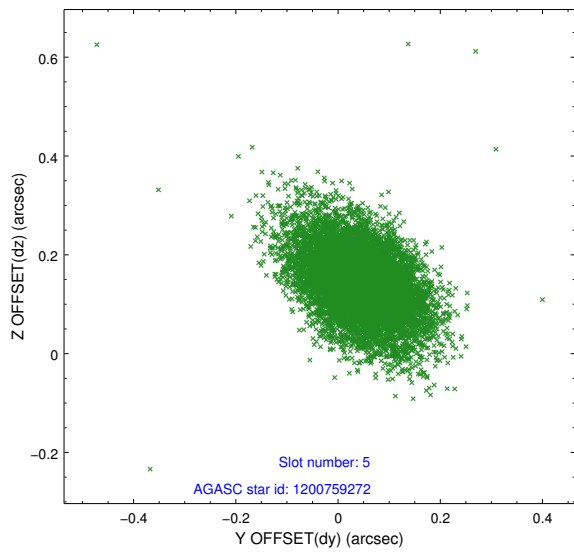
2.4.1 Slot 3



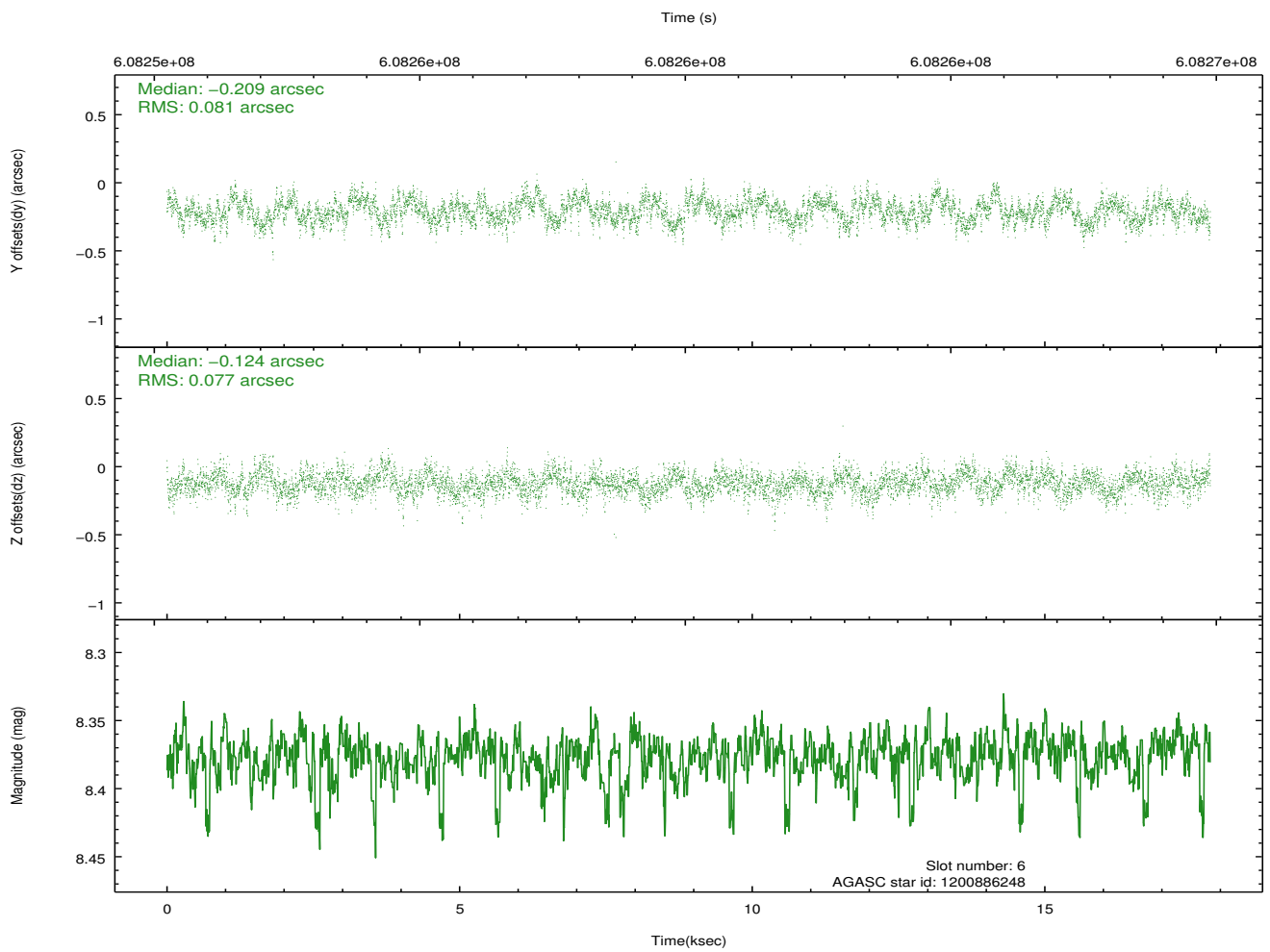
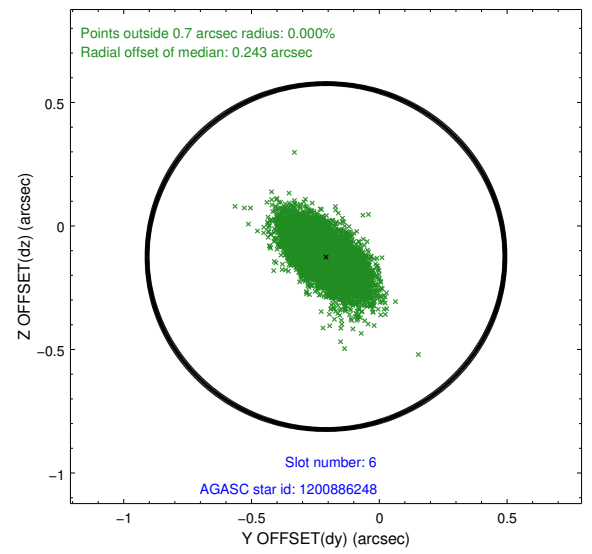
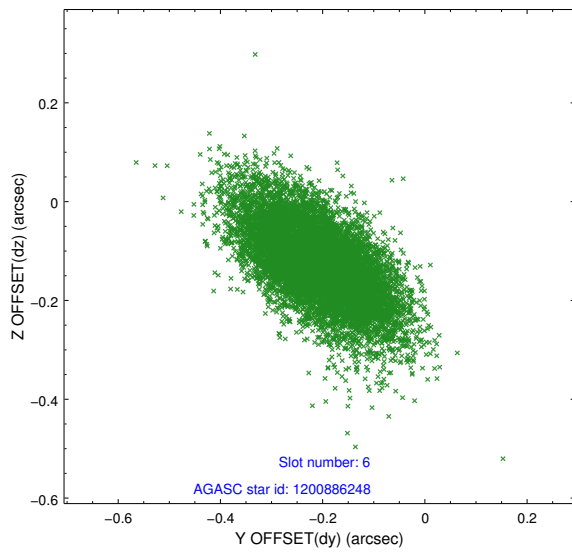
2.4.2 Slot 4



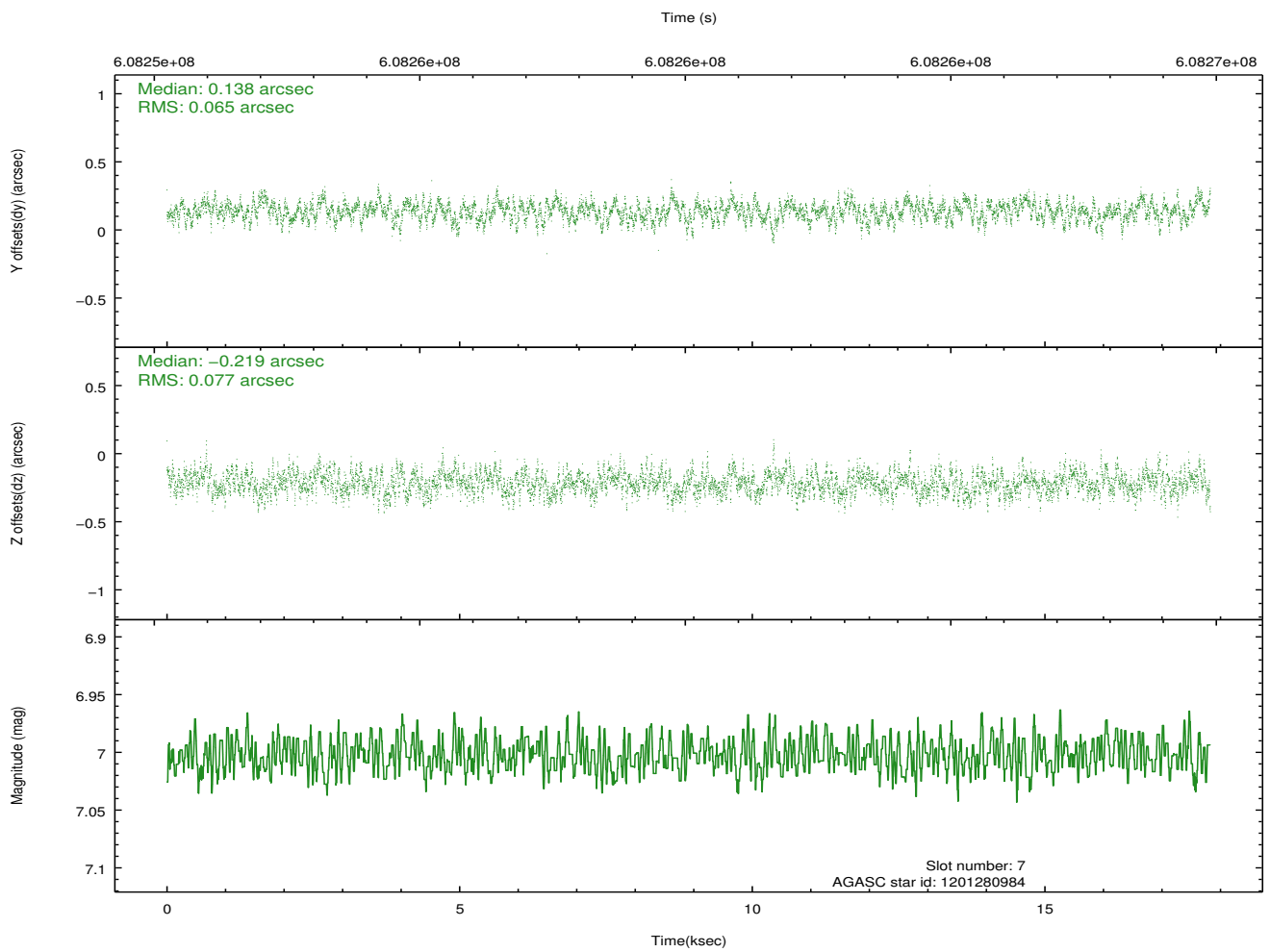
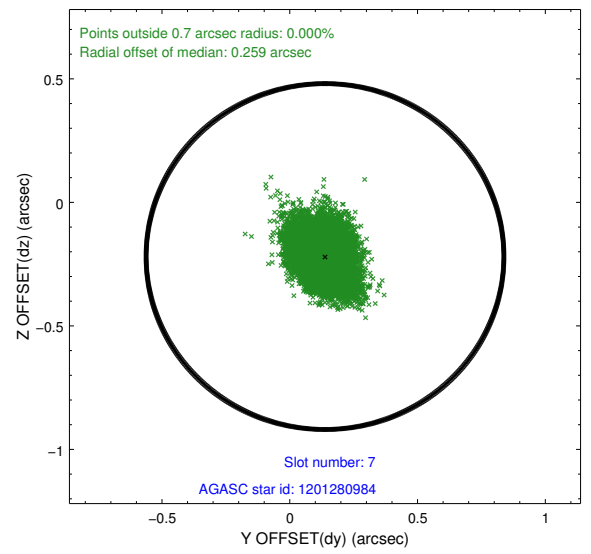
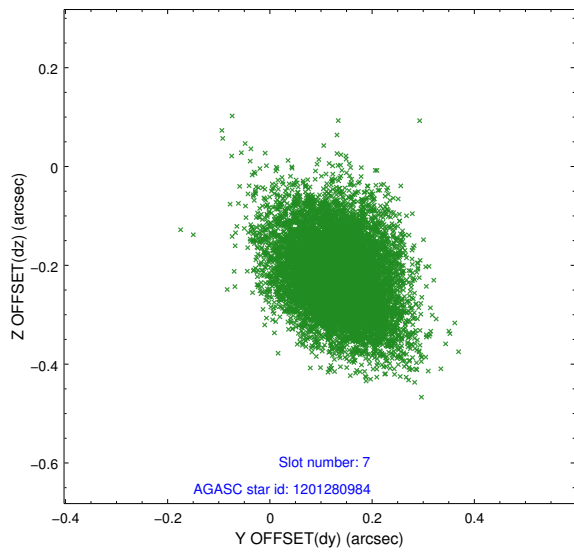
2.4.3 Slot 5



2.4.4 Slot 6

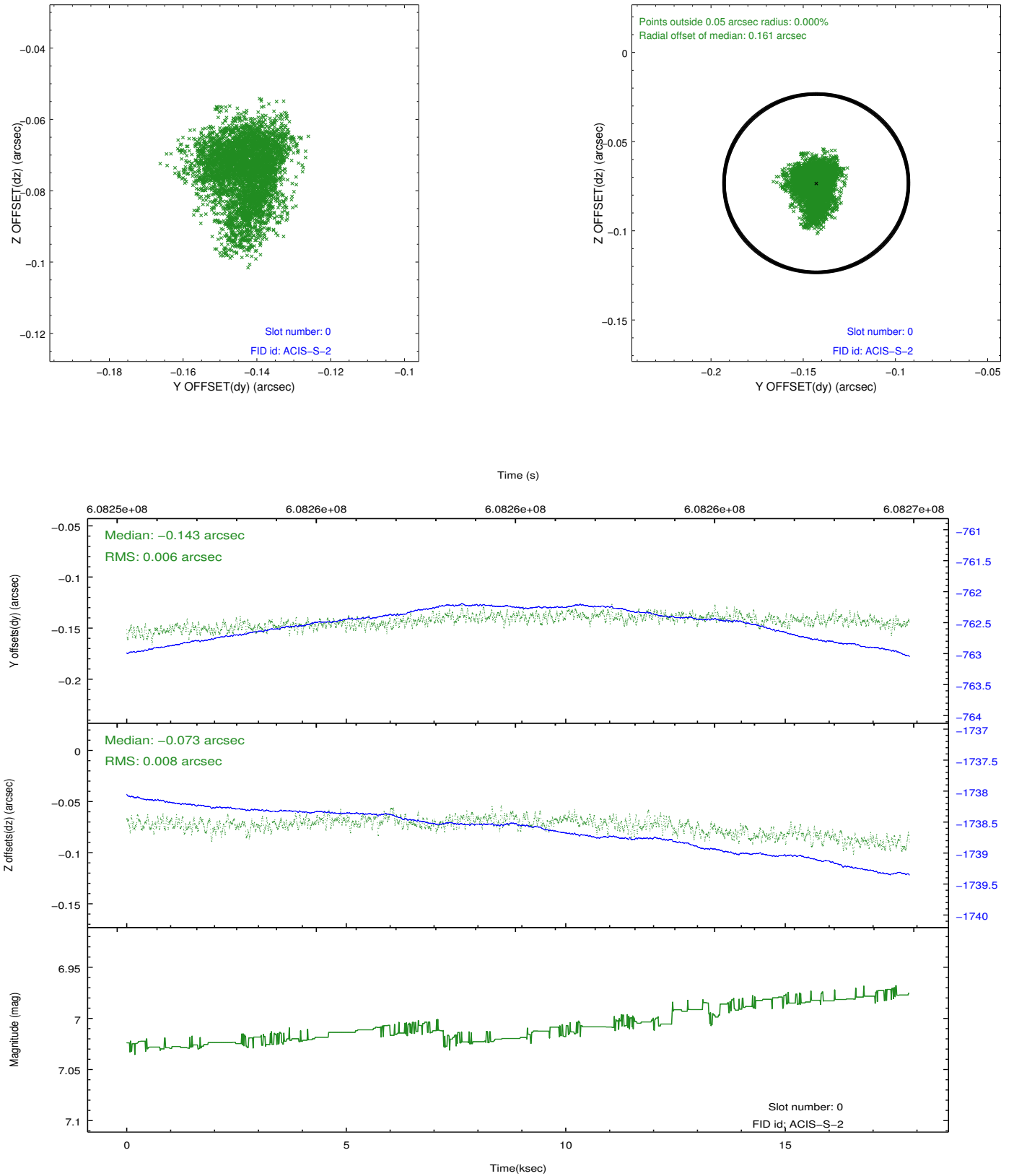


2.4.5 Slot 7

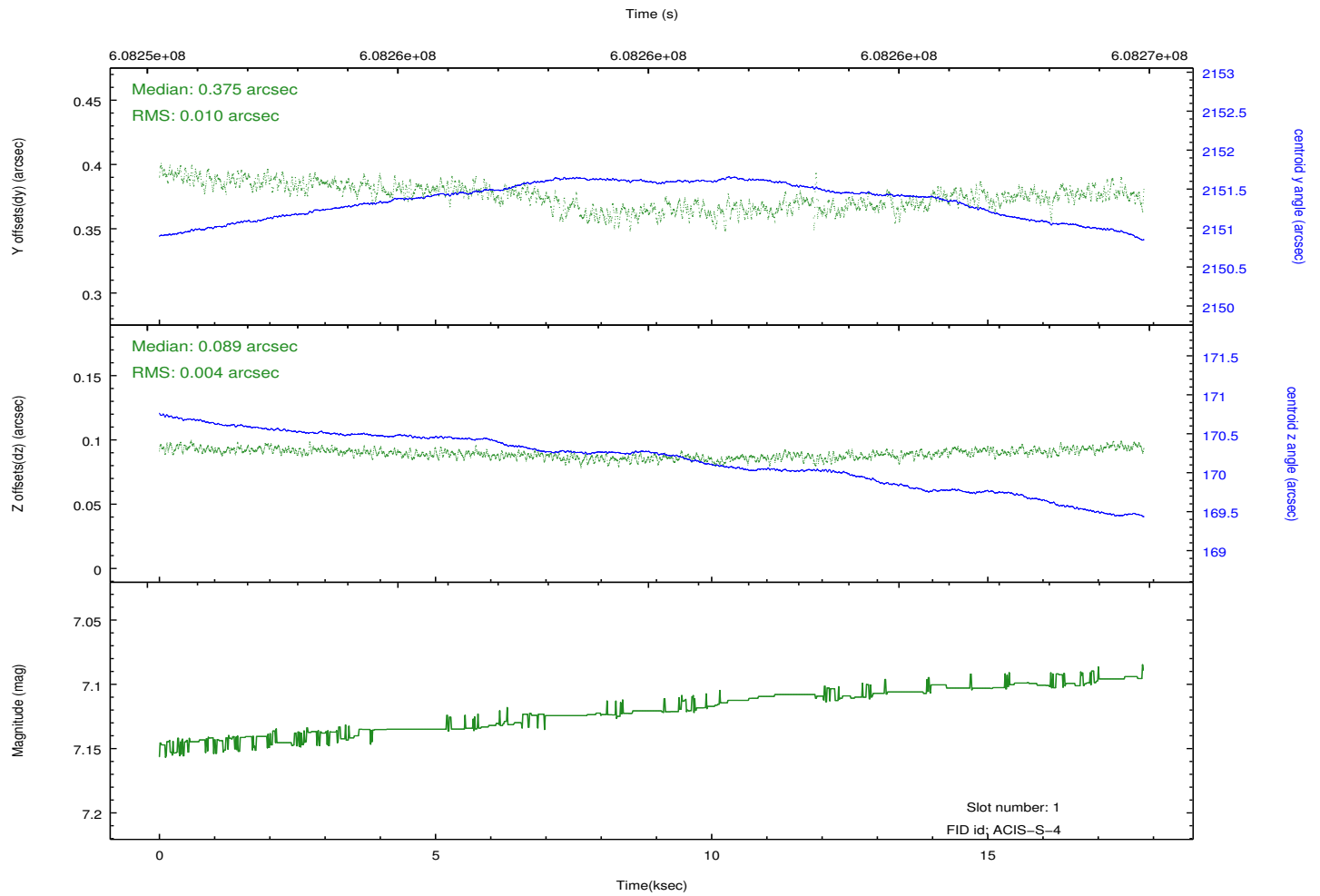
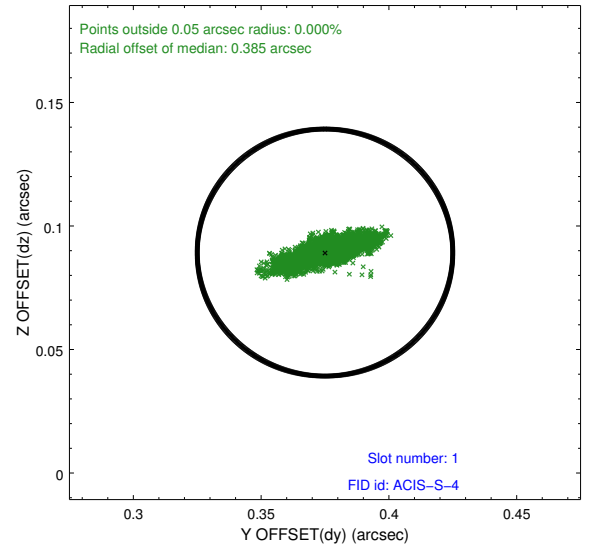
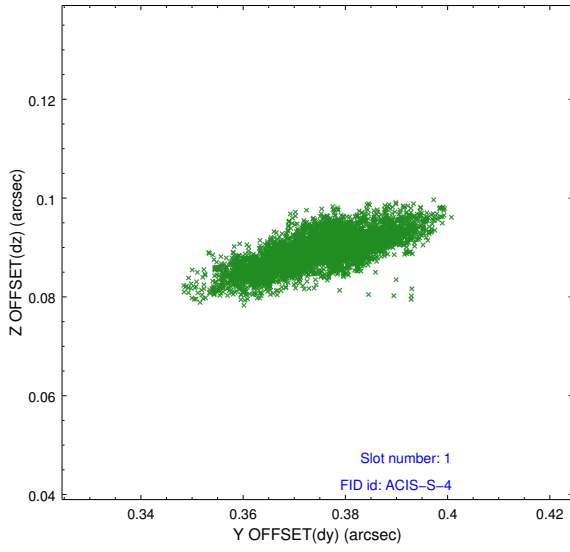


2.5 FID Slots

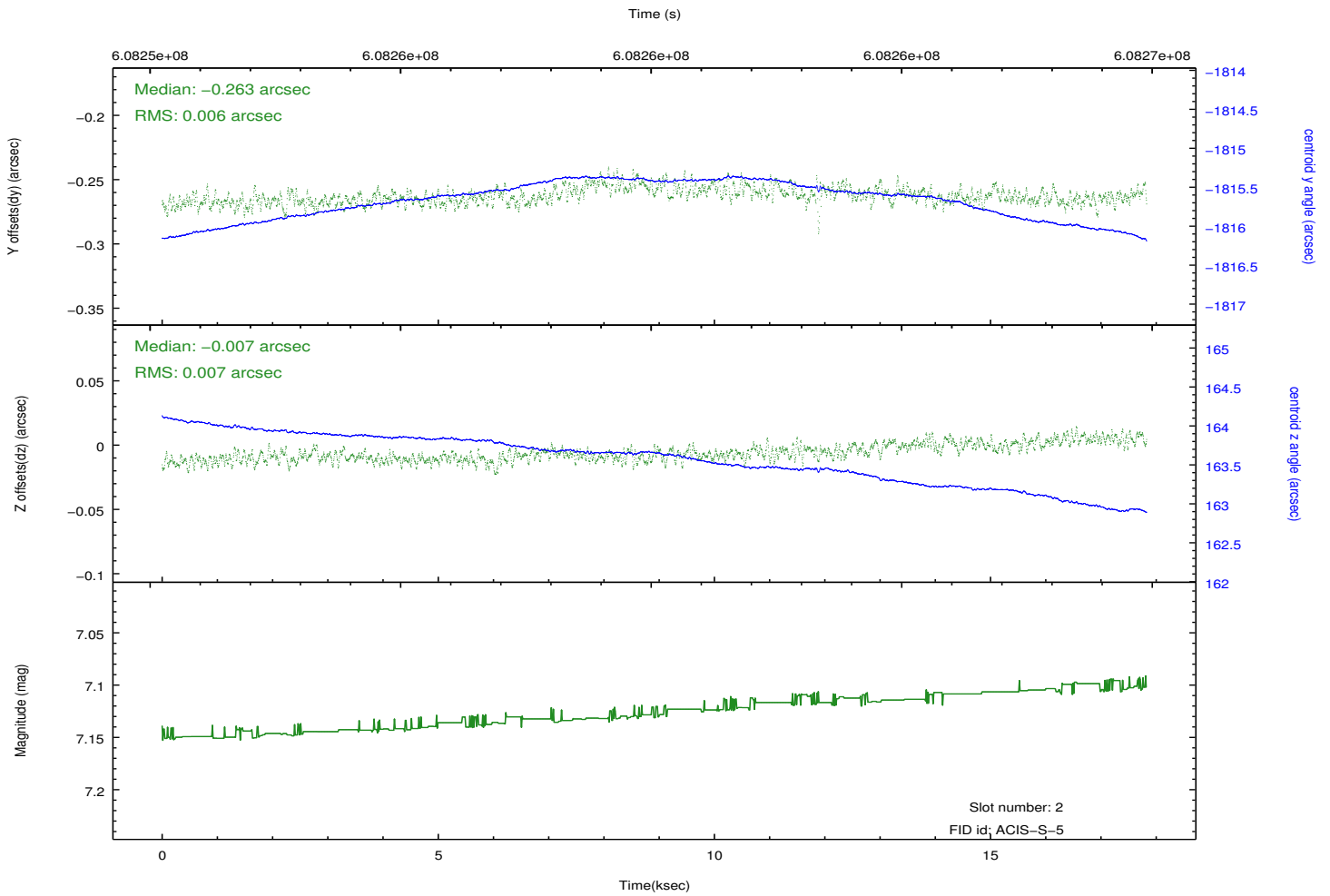
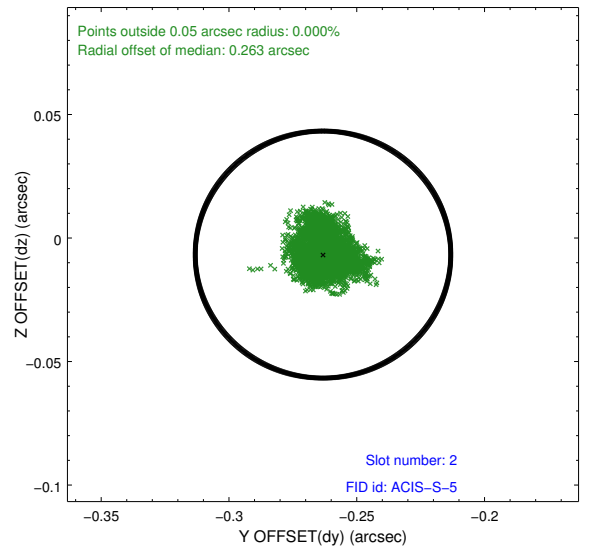
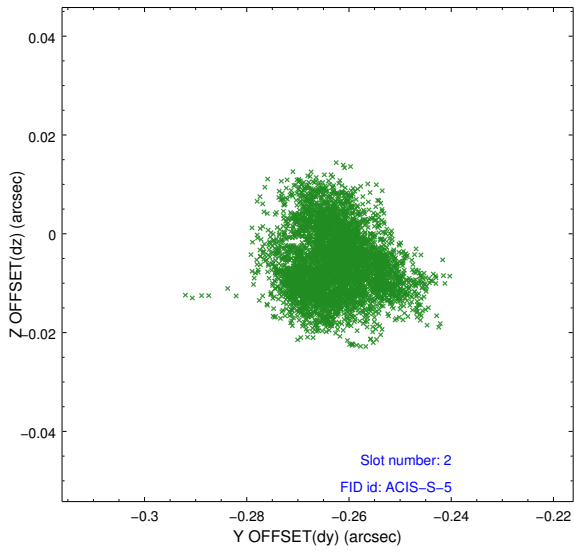
2.5.1 Slot 0



2.5.2 Slot 1



2.5.3 Slot 2



A Summary

A.1 Status

V&V Scientist	Beth Sundheim
V&V Date (YYYY-MM-DD)	2017.04.11
V&V Edition	1
V&V Disposition and Status	OK
V&V Charge Time	17.068539713383

A.2 Comments

Joint proposal with HST.