

V&V Reference Report

L2 ASCDS Version : 10.5.2

Observation 19954 - L2 Version 1
Chandra X-Ray Center

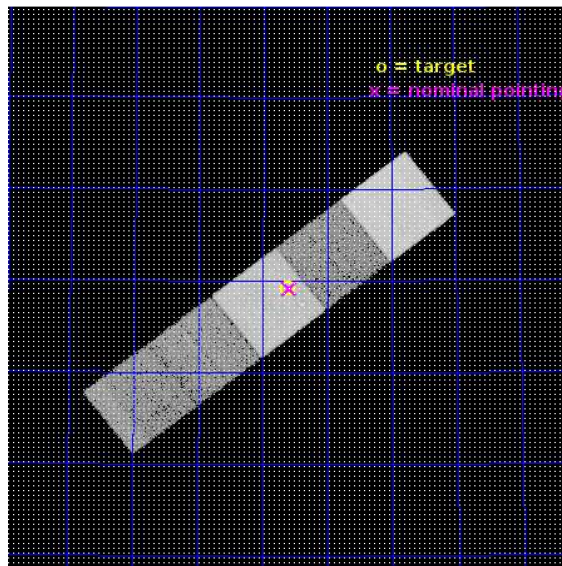
L2 Processing Date : Mar 13 2017

Contents

1	Front	2
2	OBI	3
2.1	OBI	3
2.1.1	Images	3
2.1.2	Bias	3
2.1.3	Parameters	4
2.1.4	Events	4
2.2	Compared Parameters	5
2.3	Aspect	6
2.4	Star Slots	9
2.4.1	Slot 3	9
2.4.2	Slot 4	10
2.4.3	Slot 5	11
2.4.4	Slot 6	12
2.4.5	Slot 7	13
2.5	FID Slots	14
2.5.1	Slot 0	14
2.5.2	Slot 1	15
2.5.3	Slot 2	16
A	Summary	17
A.1	Status	17
A.2	Comments	17

1 Front

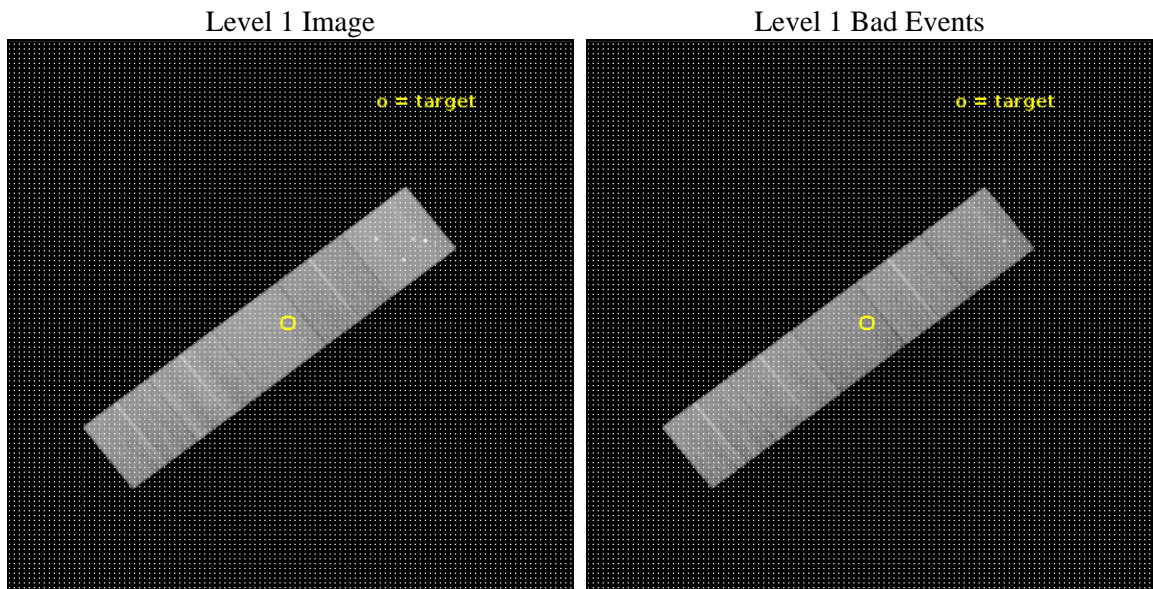
seq_num	703172	Sequence number
obs_id	19954	Observation id
title	CMB-INDUCED RADIO QUENCHING OF HIGH-REDSHIFT AGN	Proposal title
observer	Elena Gallo	Principal investigator
object	4C63.20	Source name
dtcycle	0	
cycle	P	events from which exps? Prim/Second/Both
ra_targ	219.155417	Observer's specified target RA [deg]
dec_targ	63.320306	Observer's specified target Dec [deg]
ra_nom	219.14747458719	Nominal RA [deg]
dec_nom	63.319073920387	Nominal Dec [deg]
roll_nom	142.16374534568	Nominal Roll [deg]
revision	1	Processing version of data
ontime	21042.737514257	Sum of GTIs [s]
livetime	20767.798657196	Livetime [s]
ontime5	21042.696474314	Sum of GTIs [s]
ontime6	21039.514353991	Sum of GTIs [s]
ontime7	21042.737514257	Sum of GTIs [s]
ontime8	21042.614394307	Sum of GTIs [s]
ontime9	21039.432293892	Sum of GTIs [s]
l2events	238819	Number of level 2 events



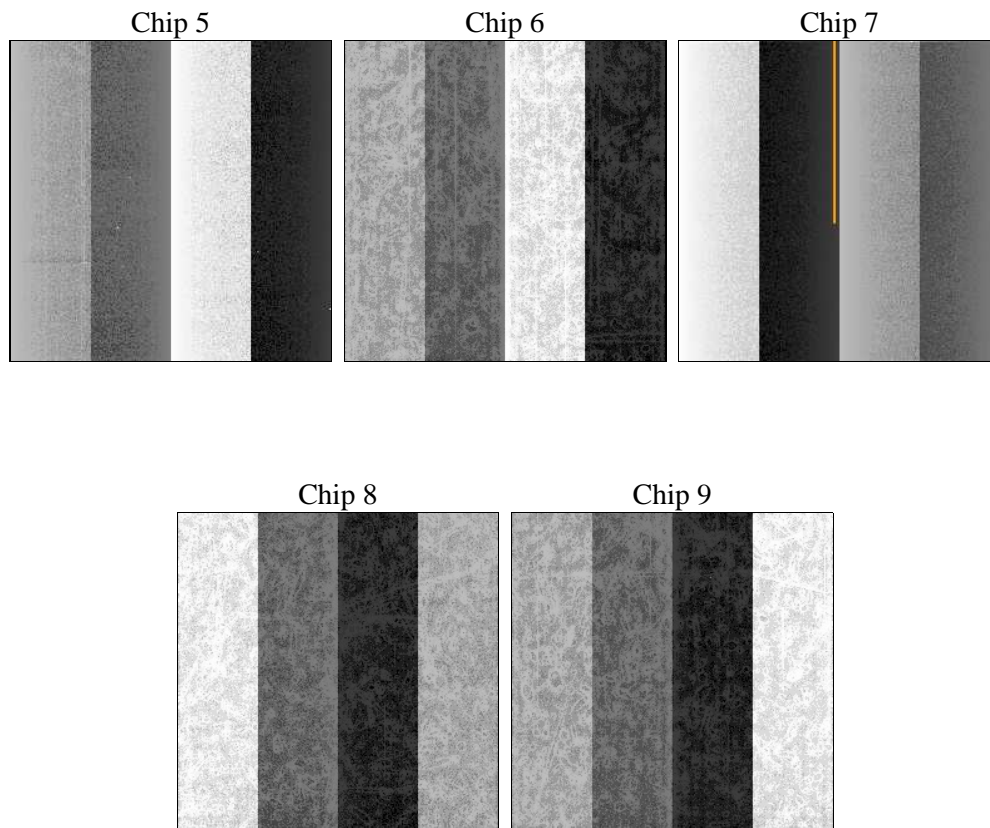
2 OBI

2.1 OBI

2.1.1 Images



2.1.2 Bias



2.1.3 Parameters

obi_num	2	Obi number	sched_exp_time	21000.000000	[s] Scheduled observation exposure time
ascdsver	10.5.2	Processing system revision	ontime	21042.737514257	Sum of GTIs [s]
caldbver	4.7.3	 	ontime5	21042.696474314	Sum of GTIs [s]
date	2017-03-13T21:34:08	Date and time of file creation	ontime6	21039.514353991	Sum of GTIs [s]
revision	1	Processing version of data	ontime7	21042.737514257	Sum of GTIs [s]
			ontime8	21042.614394307	Sum of GTIs [s]
			ontime9	21039.432293892	Sum of GTIs [s]
			l1events	978083	Number of level 1 events

2.1.4 Events

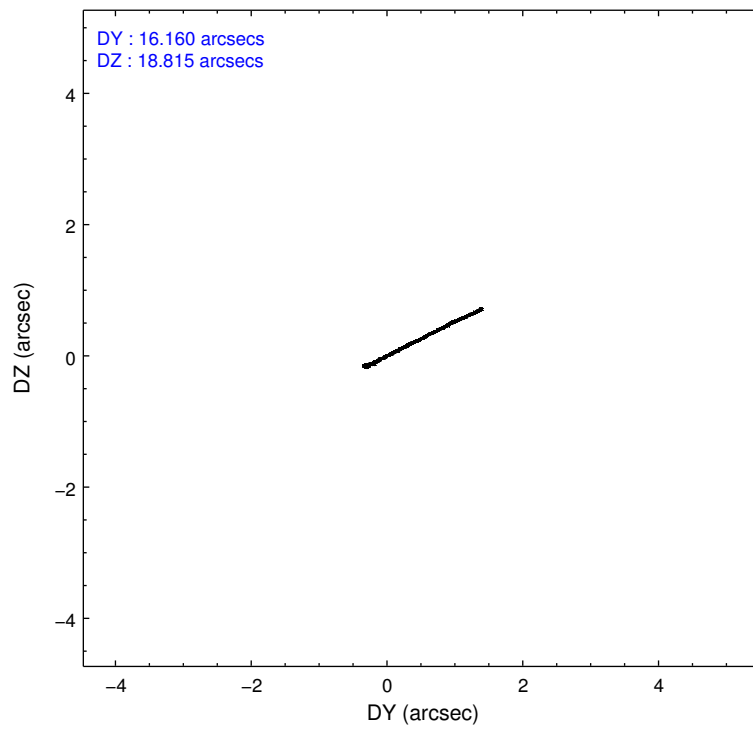
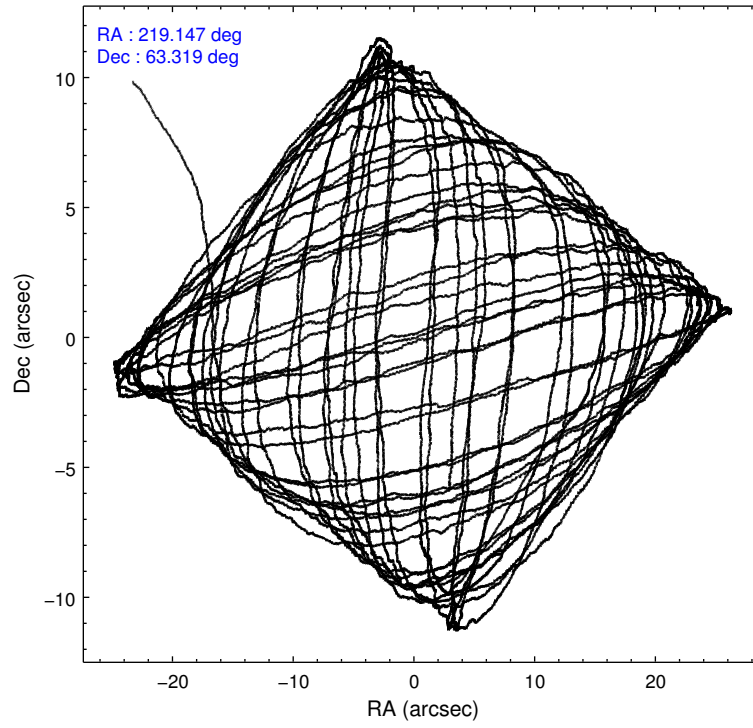
	ccd 5	ccd 6	ccd 7	ccd 8	ccd 9
level 1 events	259936	160960	196572	200834	159781
rejected events	127636	143931	113090	151030	141766
rejected %	49%	89%	57%	75%	88%

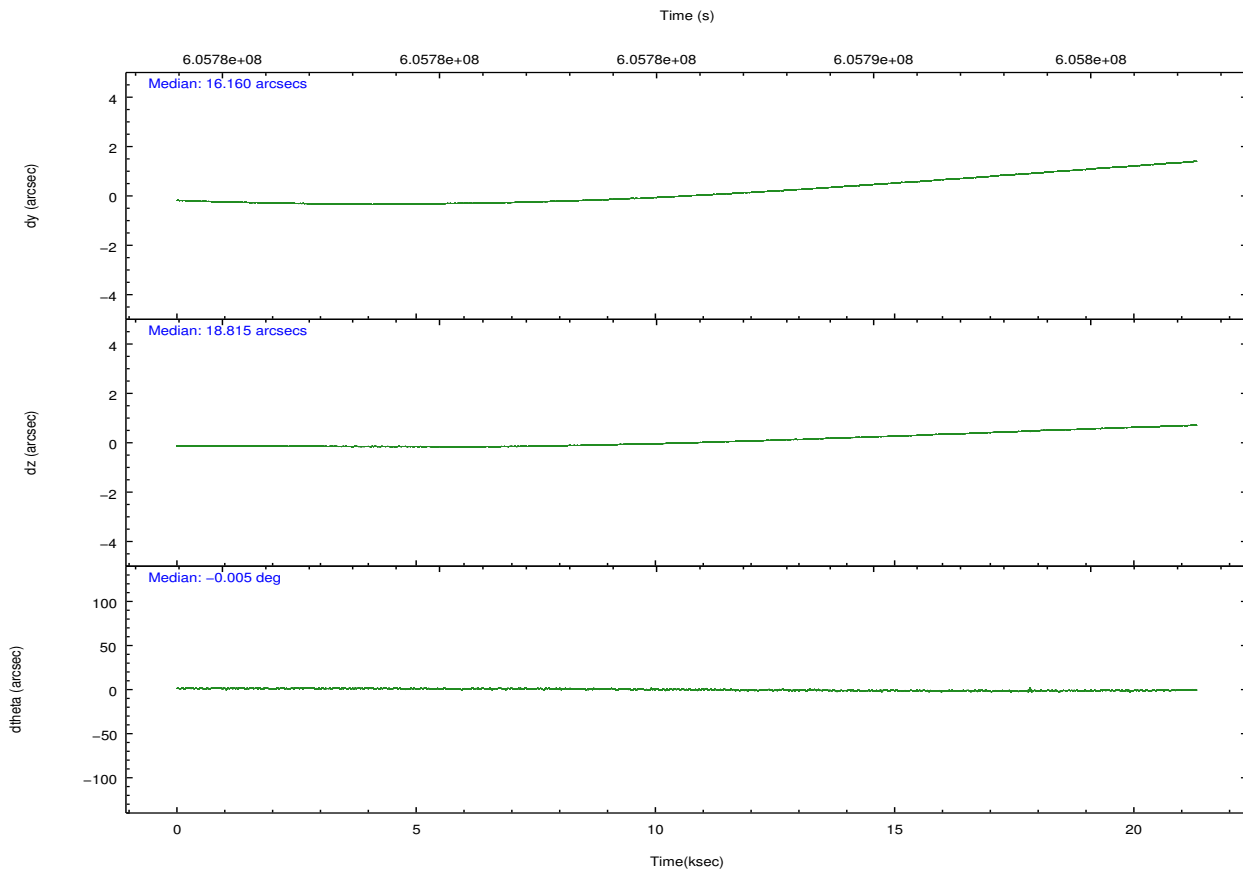
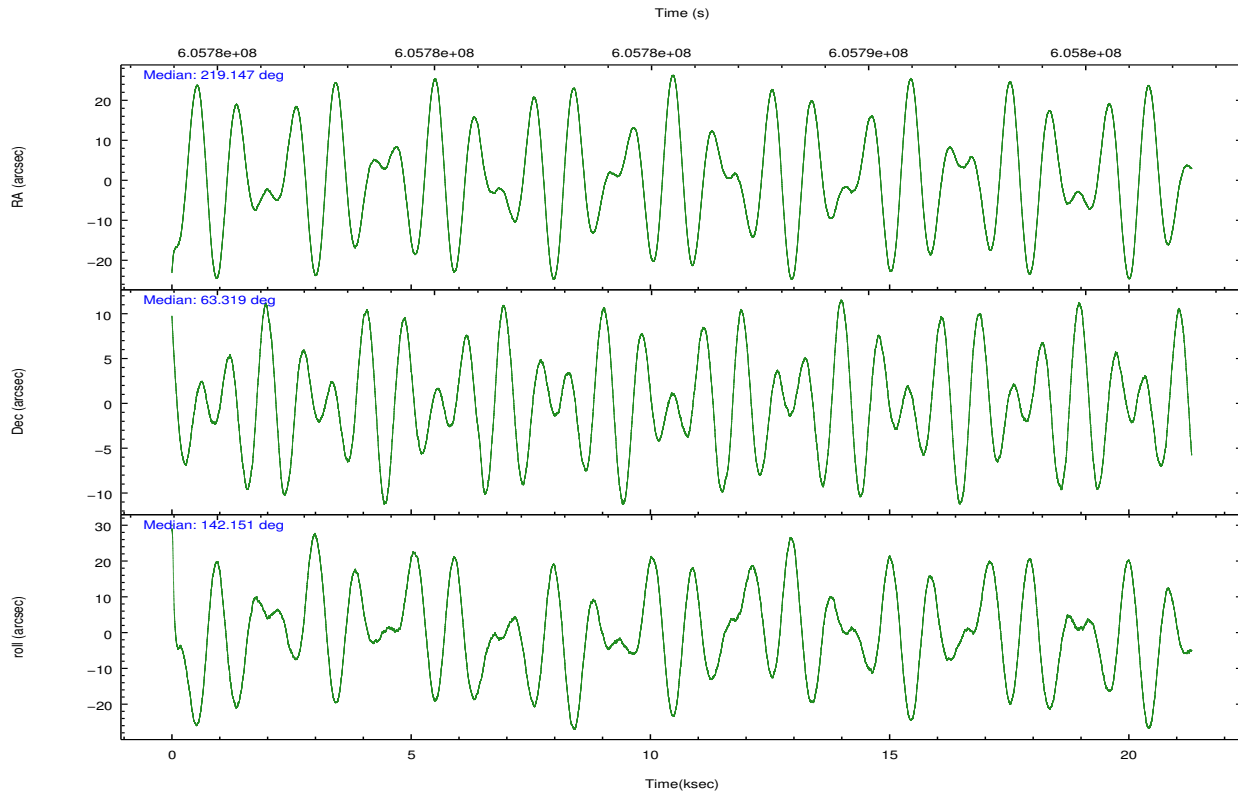
	ccd 5	ccd 6	ccd 7	ccd 8	ccd 9
grade 0 events	19775	5329	6733	13592	6101
	7%	3%	3%	6%	3%
grade 1 events	1497	85	264	137	91
	0%	0%	0%	0%	0%
grade 2 events	40208	4231	17492	12497	4184
	15%	2%	8%	6%	2%
grade 3 events	3883	1630	6362	5063	1792
	1%	1%	3%	2%	1%
grade 4 events	3503	1504	6128	4672	1731
	1%	0%	3%	2%	1%
grade 5 events	15792	6602	18379	10389	7666
	6%	4%	9%	5%	4%
grade 6 events	64965	4336	46794	14022	4212
	24%	2%	23%	6%	2%
grade 7 events	110313	137243	94420	140462	134004
	42%	85%	48%	69%	83%

2.2 Compared Parameters

Parameter	Planned	Actual	Parameter	Planned	Actual
Instrument	ACIS	ACIS	Obspar format version number	7	7
Detector	ACIS-56789	ACIS-56789	Obspar file type	PREDICTED	ACTUAL
Grating	NONE	NONE	Obspar update status	NONE	UPDATED
Data mode	FAINT	FAINT	CCD I0 on	N	N
Observation mode	POINTING	POINTING	CCD I1 on	N	N
[deg] Pointing RA	219.208165	219.1474745871908	CCD I2 on	N	N
[deg] Pointing Dec	63.315684	63.31907392038661	CCD I3 on	N	N
[deg] Pointing Roll	141.952866	142.1637453456815	CCD S0 on	N	N
[mm] SIM focus pos	-0.684267	-0.6828225247311905	CCD S1 on	O2	Y
[mm] SIM defocus	0	0.001444936568705701	CCD S2 on	Y	Y
[mm] SIM translation stage pos	-190.132523	-190.1425803651734	CCD S3 on	Y	Y
[mm] SIM translation stage offset	0	0.01005778216563158	CCD S4 on	Y	Y
[s] Observation start time (MET)	605775345.184000	605774339.5576299	CCD S5 on	O1	Y
Observation start date	2017-03-13T06:54:36	2017-03-13T06:38:59	Number of optional ACIS chips dropped	0	0
[s] Observation end time (MET)	605796345.184000	605796977.19644	On-chip summing requested	N	N
Observation end date	2017-03-13T12:44:36	2017-03-13T12:56:17	Subarray requested	NONE	NONE
Read mode	TIMED	TIMED	Alternating exposures requested	N	N
			[s] Primary exposure time	0.000000	3.1

2.3 Aspect





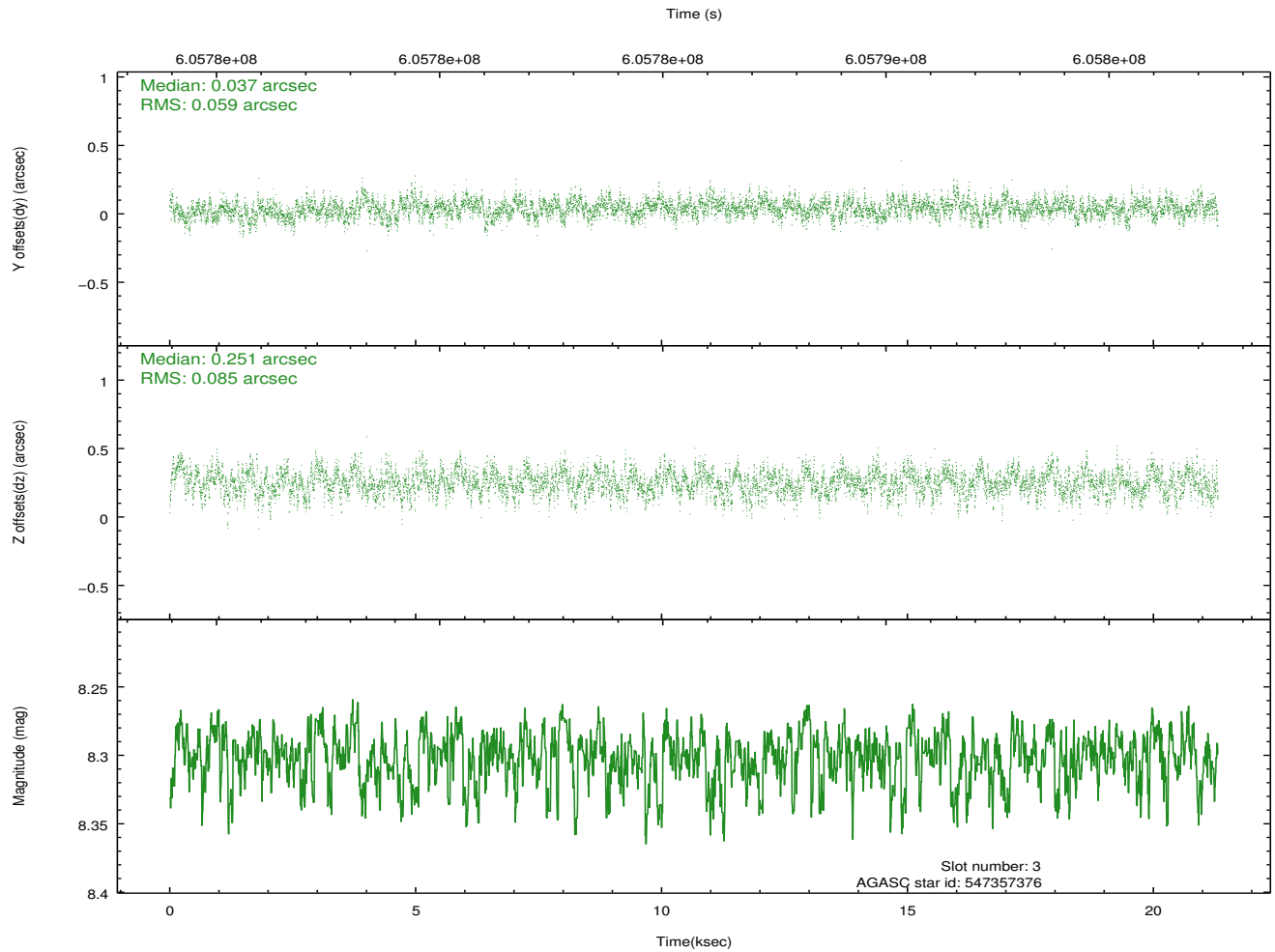
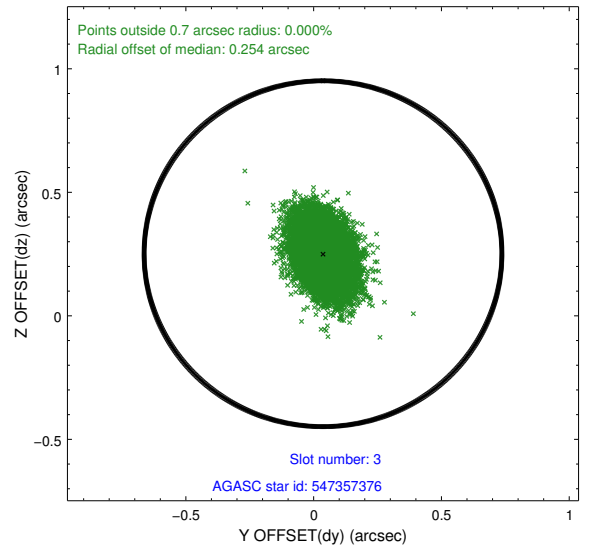
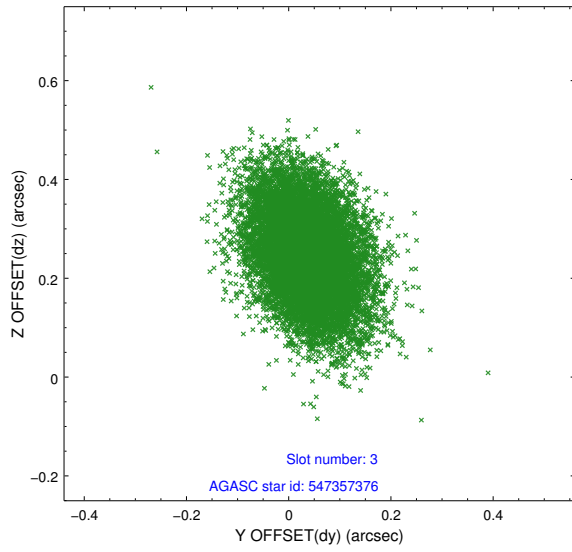
Slot Statistics

slot	status	used	id	mag	n_pts	med_dy	med_dz	dr1	dr2	ra	dec	mean_y	mean_z
0	FID		ACIS-S-1	7.20	5197	0.186	0.060	0.016	0.045	0.000000	0.000000	926.83	-1735.94
1	FID		ACIS-S-2	7.11	5198	-0.266	-0.120	0.009	0.015	0.000000	0.000000	-769.44	-1740.82
2	FID		ACIS-S-6	7.36	5198	0.059	0.068	0.013	0.031	0.000000	0.000000	392.30	805.25
3	GUIDE	used	547357376	8.30	10391	0.037	0.251	0.109	0.182	219.074079	63.465577	503.22	-292.14
4	GUIDE	used	547364360	9.34	10384	-0.033	-0.095	0.139	0.228	218.260002	63.834871	2345.22	-552.62
5	GUIDE	used	547362648	8.69	10392	0.079	-0.319	0.122	0.197	217.953992	63.323480	1625.93	1211.31
6	GUIDE	used	547368104	7.24	10398	-0.175	-0.198	0.092	0.150	218.627030	63.215830	523.89	861.64
7	GUIDE	used	547356864	9.29	10380	0.090	0.362	0.162	0.259	219.552498	64.066331	1240.07	-2462.89

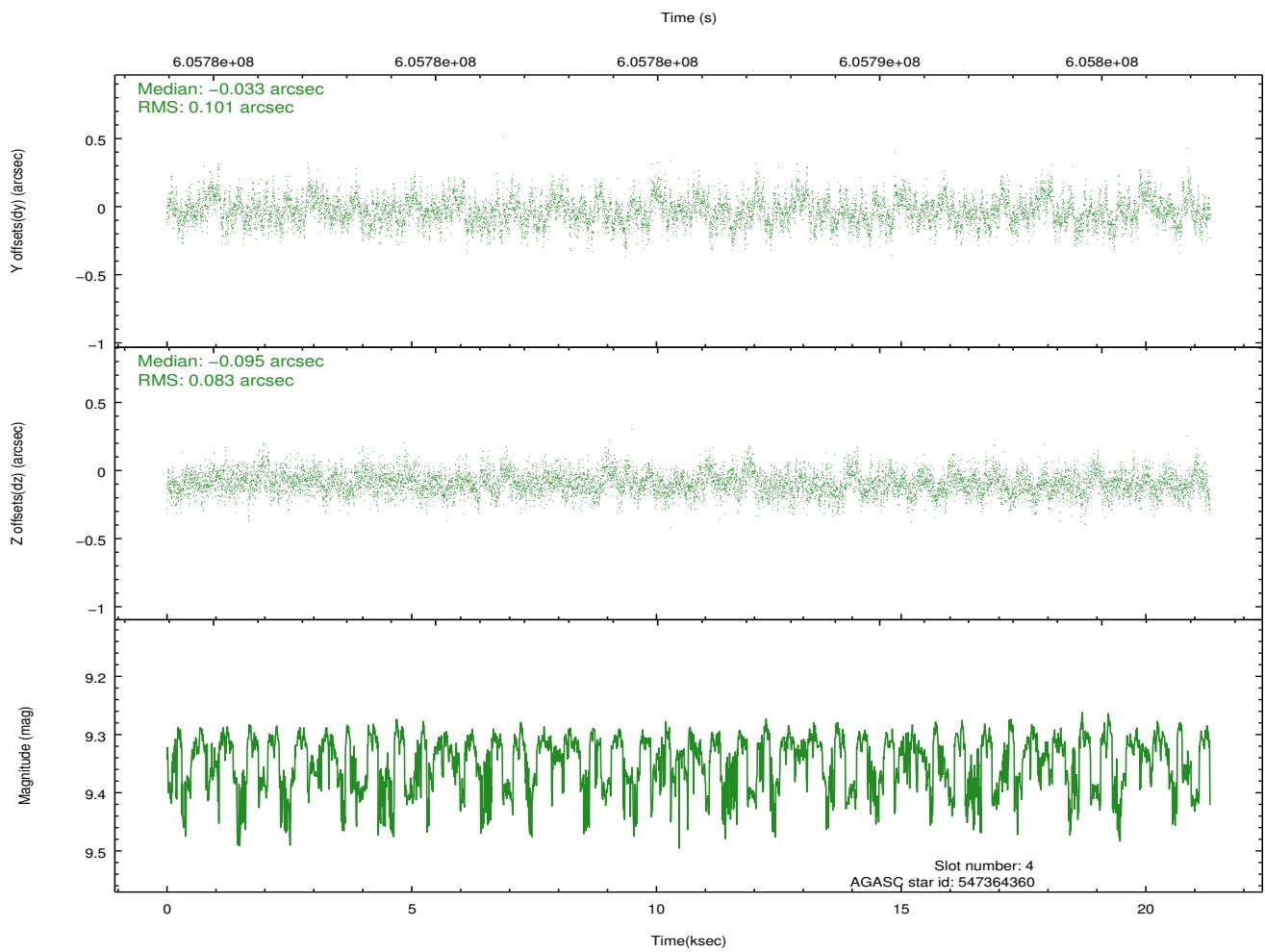
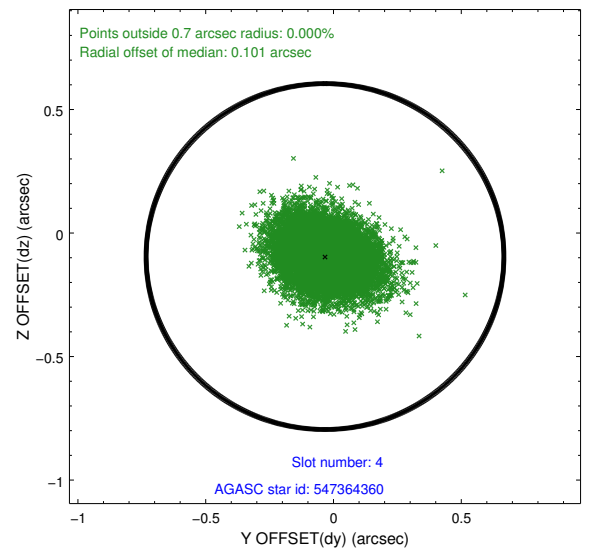
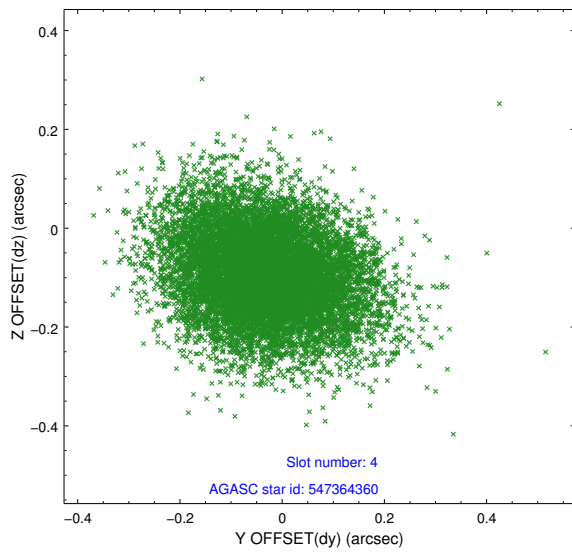
∞

2.4 Star Slots

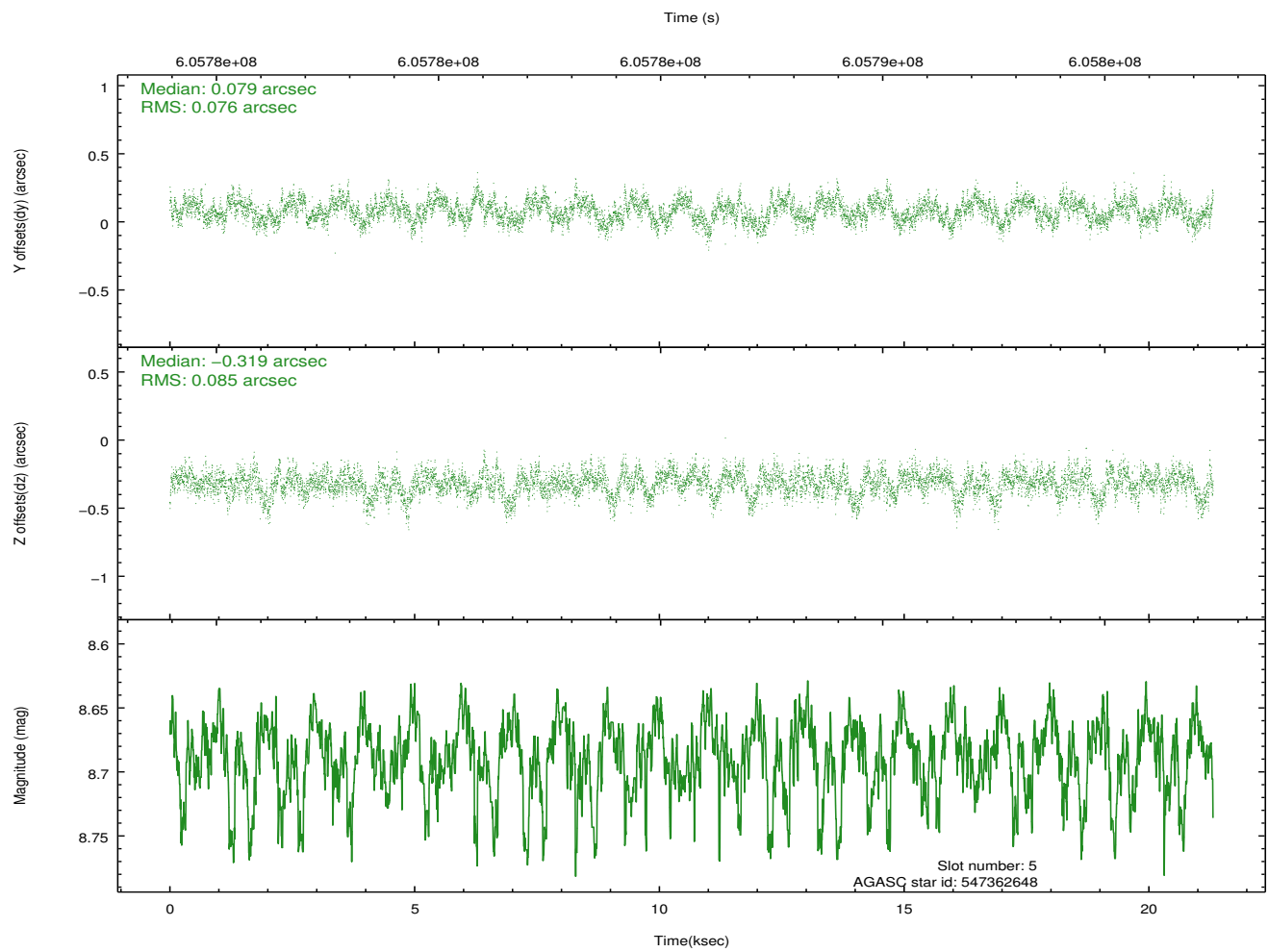
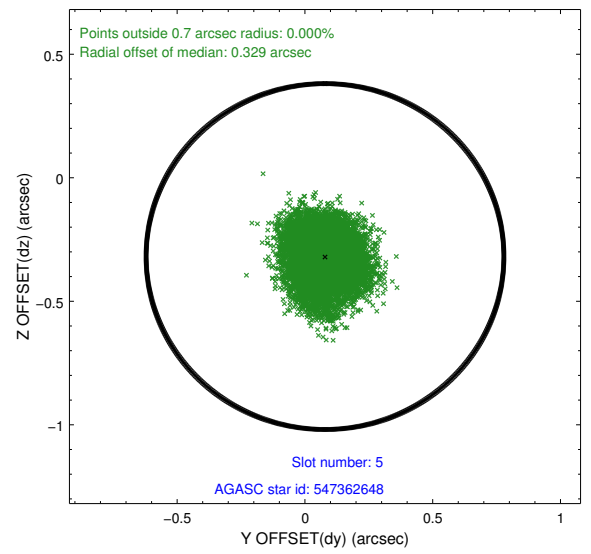
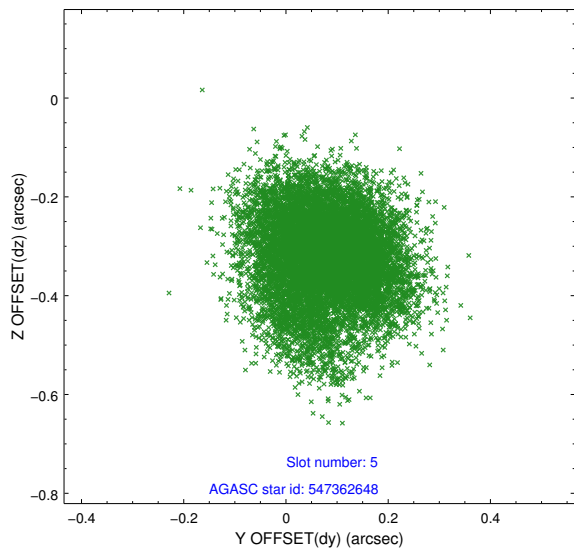
2.4.1 Slot 3



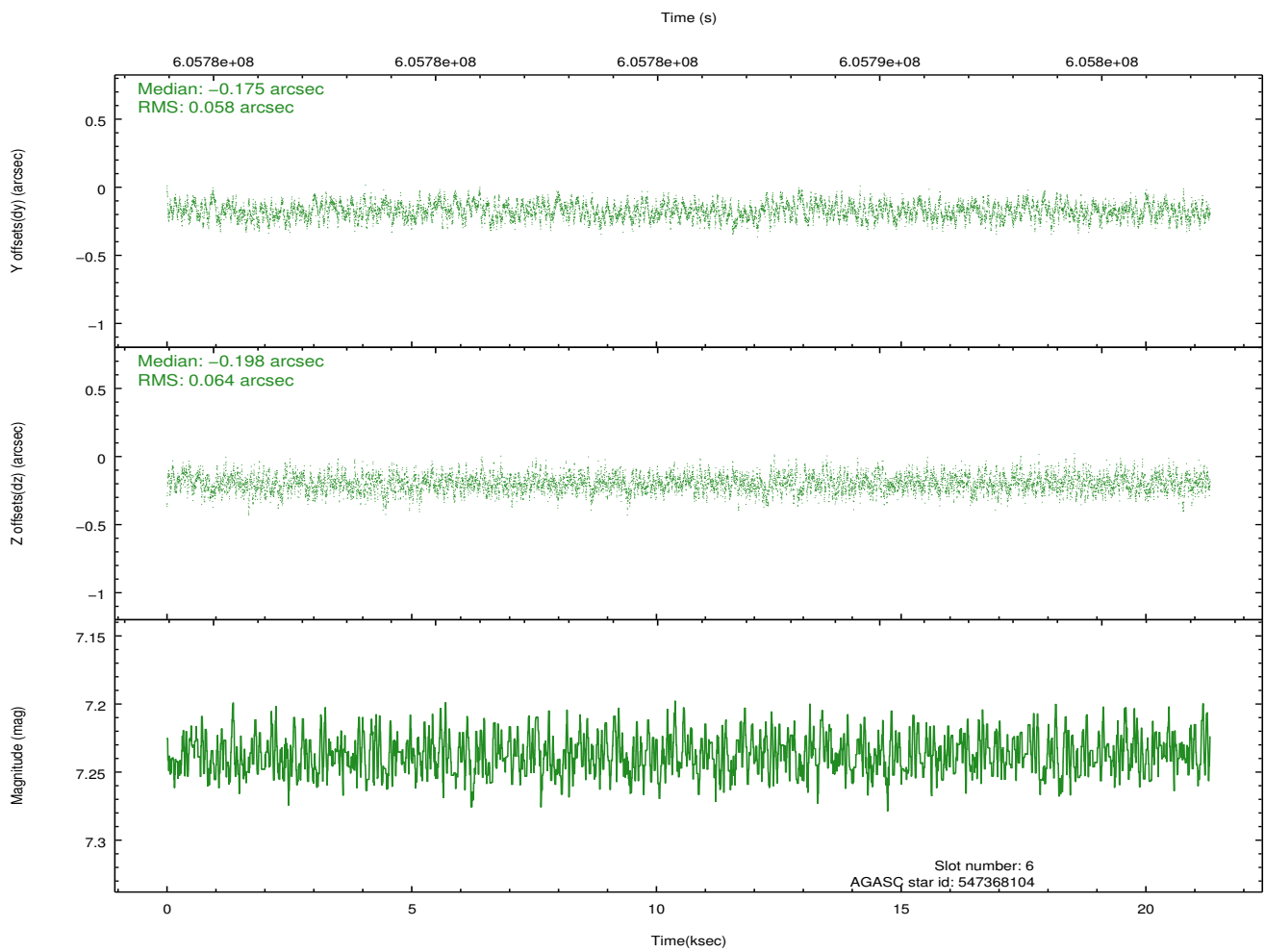
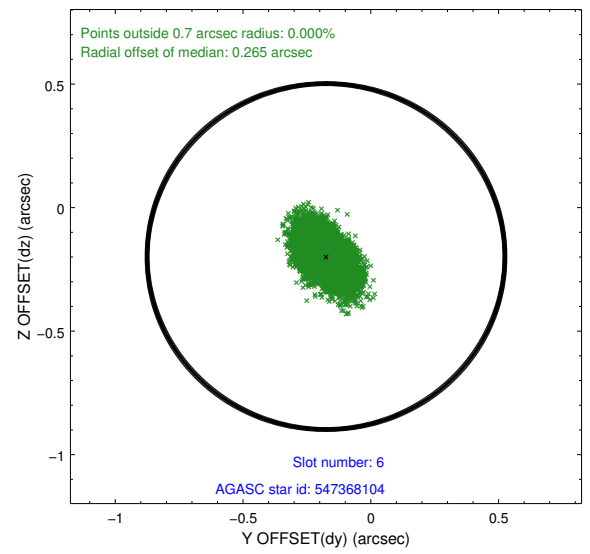
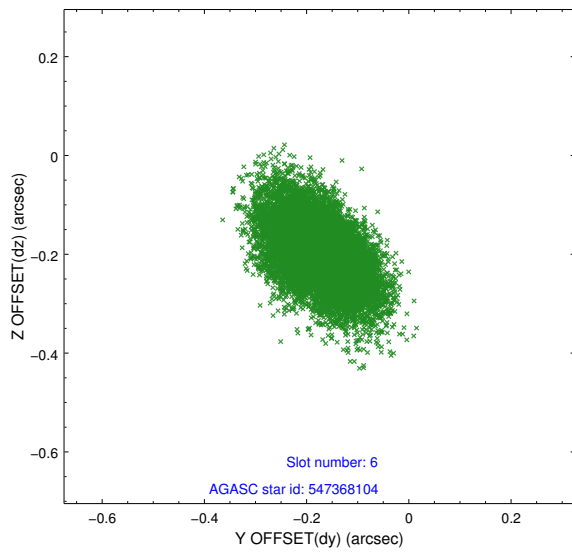
2.4.2 Slot 4



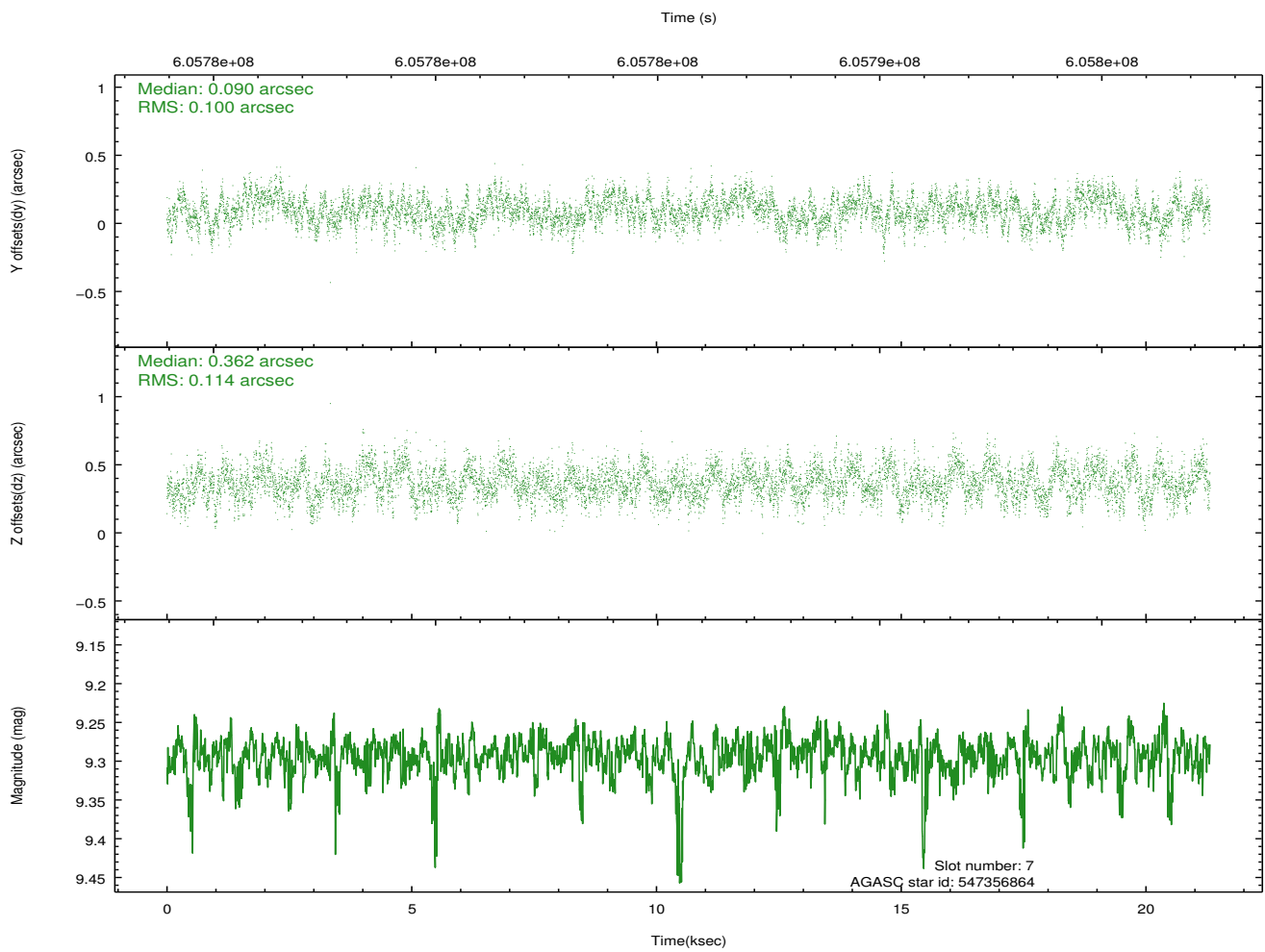
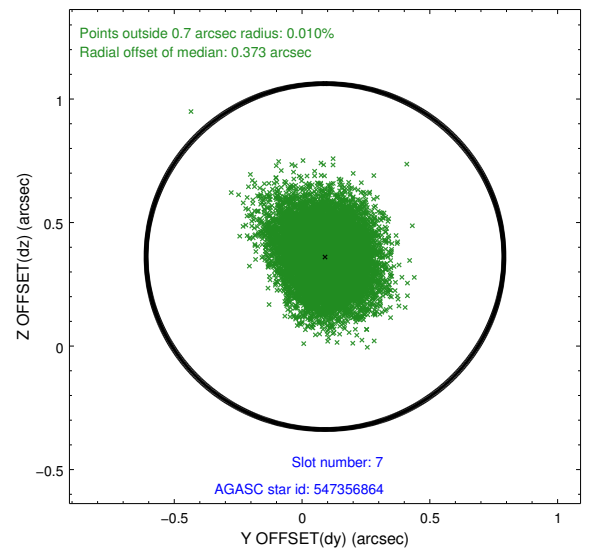
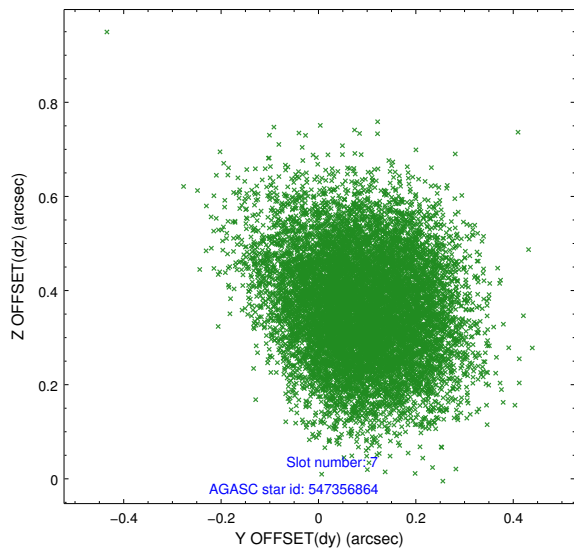
2.4.3 Slot 5



2.4.4 Slot 6

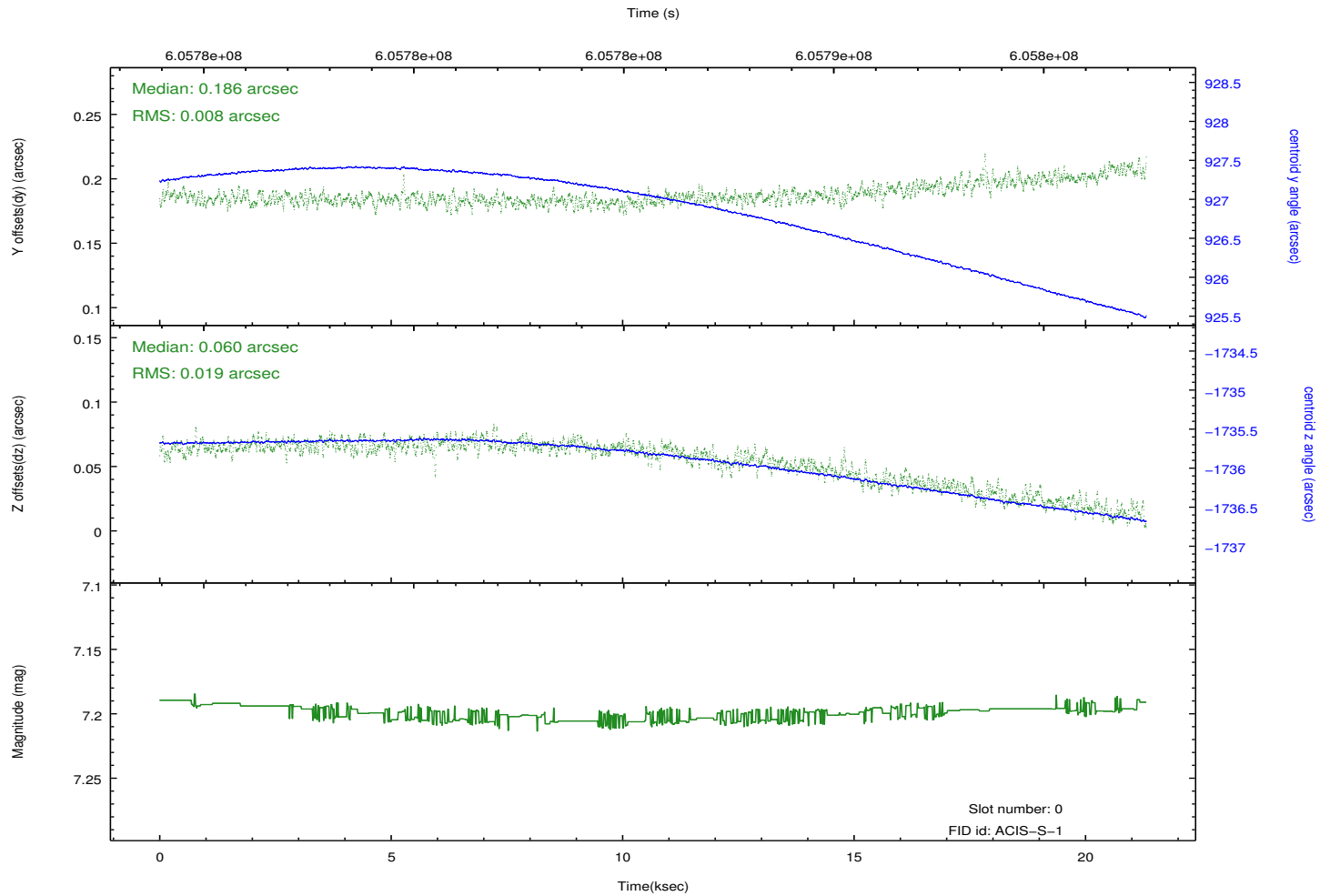
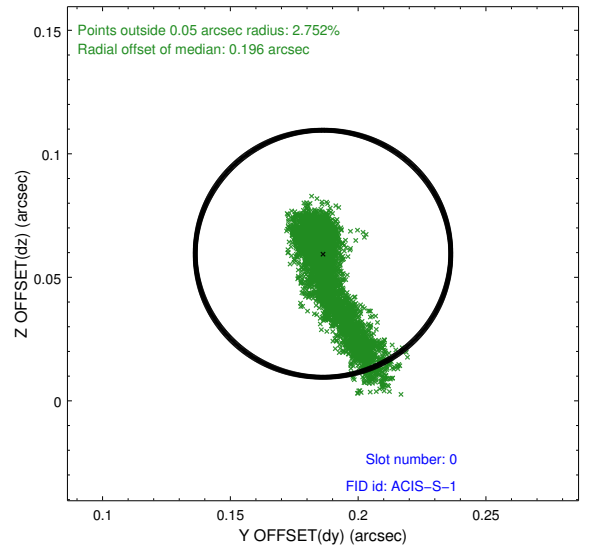
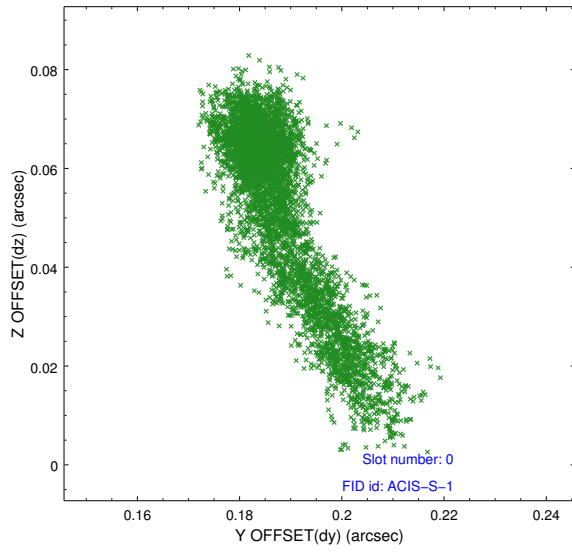


2.4.5 Slot 7

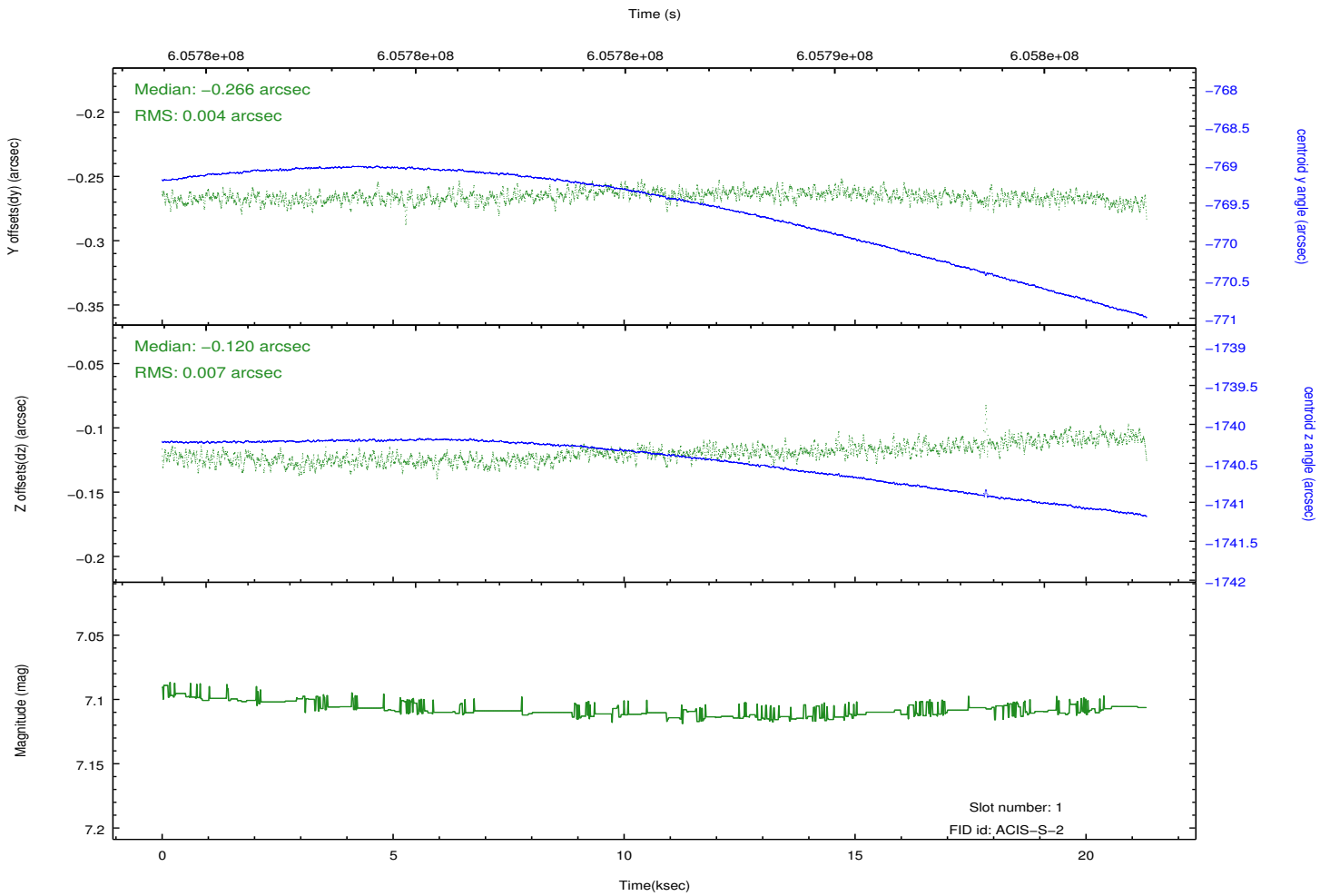
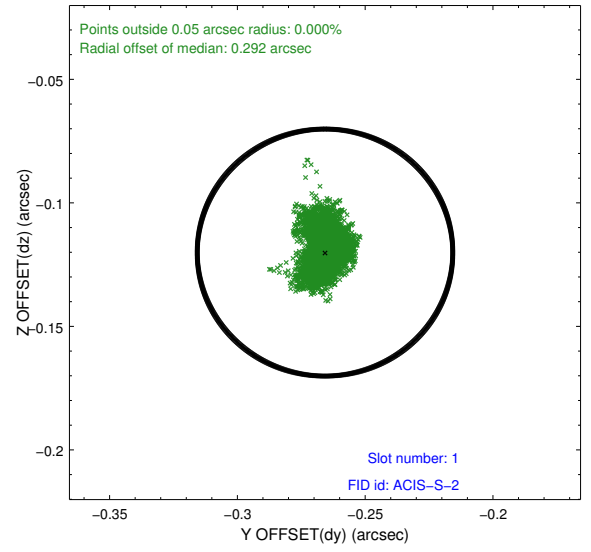
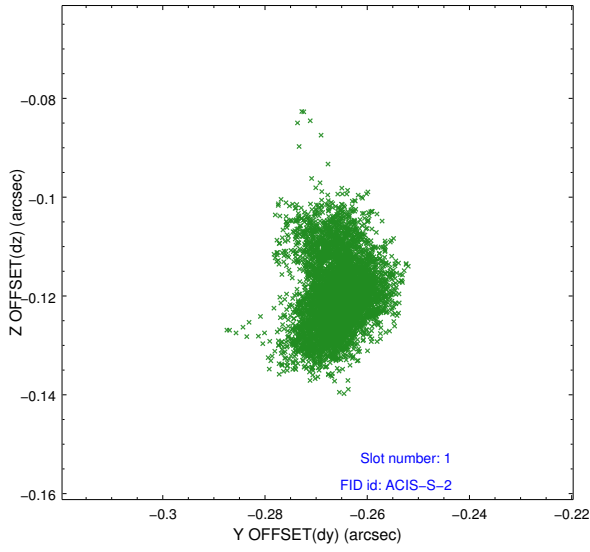


2.5 FID Slots

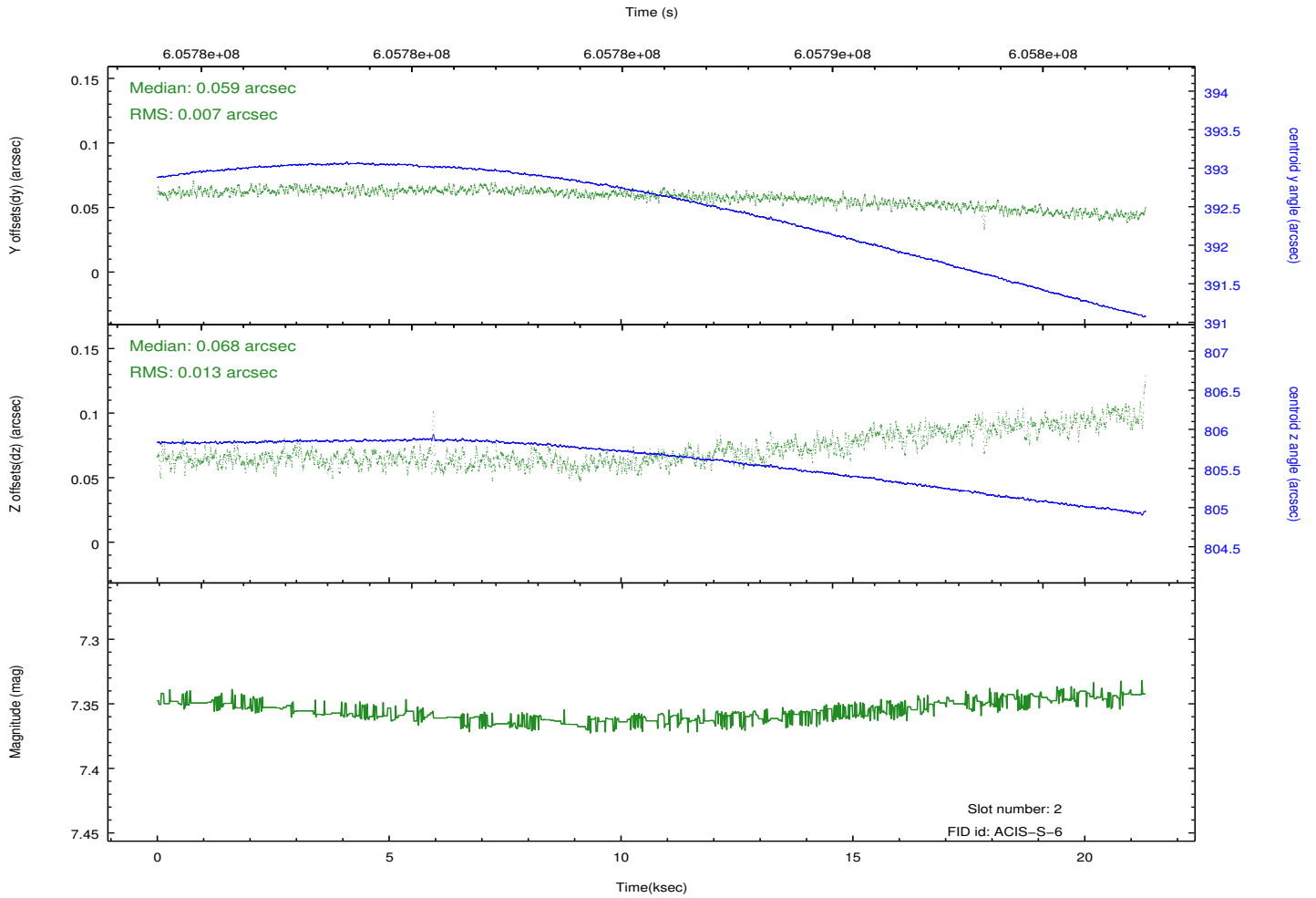
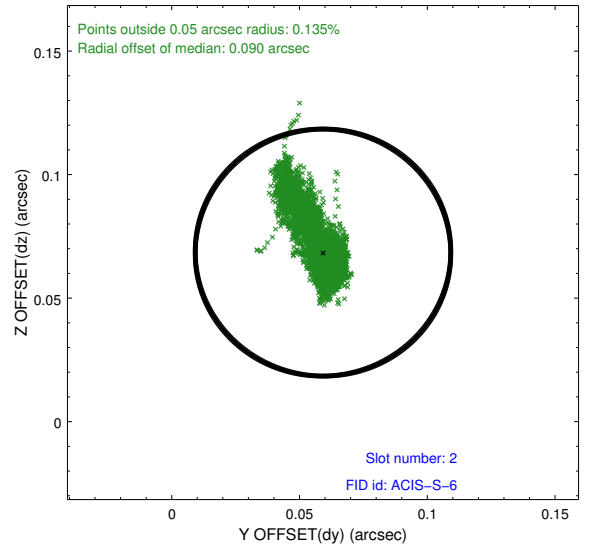
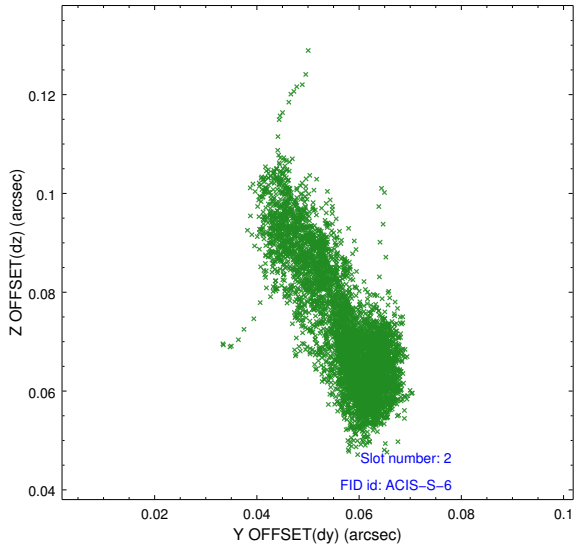
2.5.1 Slot 0



2.5.2 Slot 1



2.5.3 Slot 2



A Summary

A.1 Status

V&V Scientist	Beth Sundheim
V&V Date (YYYY-MM-DD)	2017.03.13
V&V Edition	1
V&V Disposition and Status	OK
V&V Charge Time	21.042737514257

A.2 Comments