

V&V Reference Report

L2 ASCDS Version : 10.5.2

Observation 20009 - L2 Version 1
Chandra X-Ray Center

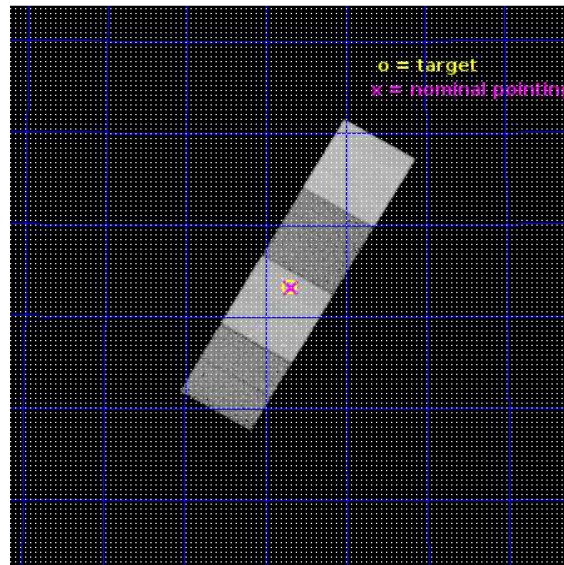
L2 Processing Date : Feb 15 2017

Contents

1	Front	2
2	OBI	3
2.1	OBI	3
2.1.1	Images	3
2.1.2	Bias	3
2.1.3	Parameters	4
2.1.4	Events	4
2.2	Compared Parameters	5
2.3	Aspect	6
2.4	Star Slots	9
2.4.1	Slot 3	9
2.4.2	Slot 4	10
2.4.3	Slot 5	11
2.4.4	Slot 6	12
2.4.5	Slot 7	13
2.5	FID Slots	14
2.5.1	Slot 0	14
2.5.2	Slot 1	15
2.5.3	Slot 2	16
A	Summary	17
A.1	Status	17
A.2	Comments	17

1 Front

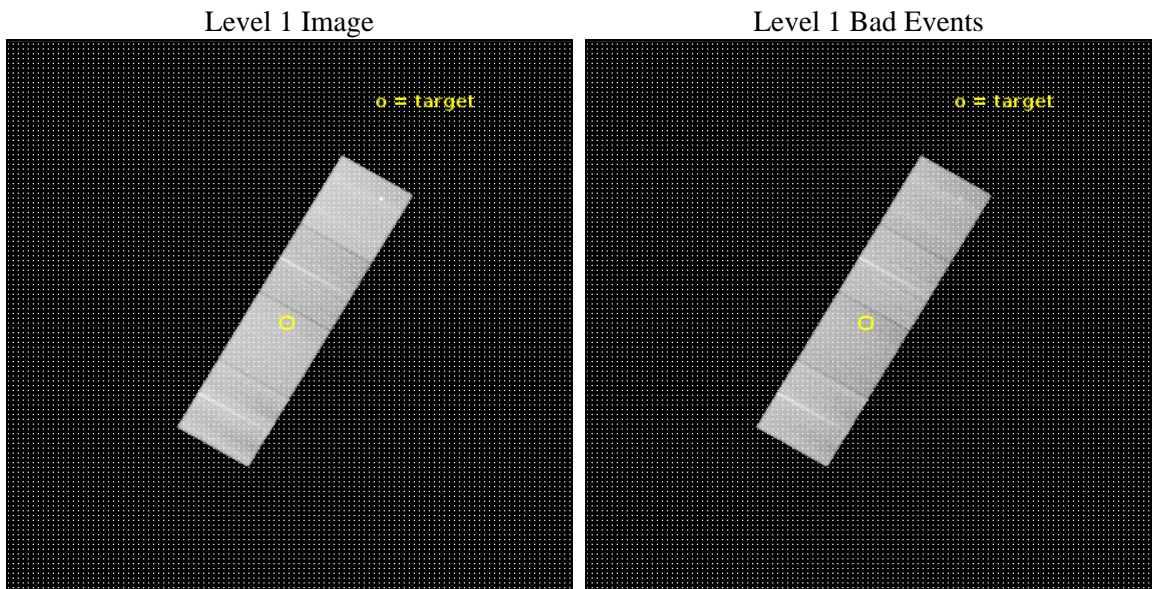
seq_num	703242	Sequence number
obs_id	20009	Observation id
title	Elliptical Galaxy in the Making: The Black Hole Activity, Galaxy-Scale Outflow, and Metal-Rich Halo of Mrk 273	Proposal title
observer	Prof. Sylvain Veilleux	Principal investigator
object	Mrk 273	Source name
dtcycle	0	
cycle	P	events from which exps? Prim/Second/Both
ra_targ	206.175417	Observer's specified target RA [deg]
dec_targ	55.886861	Observer's specified target Dec [deg]
ra_nom	206.1702494875	Nominal RA [deg]
dec_nom	55.886478767216	Nominal Dec [deg]
roll_nom	120.16089035498	Nominal Roll [deg]
revision	1	Processing version of data
ontime	34787.467234731	Sum of GTIs [s]
livetime	34332.943365148	Livetime [s]
ontime5	34787.426194787	Sum of GTIs [s]
ontime6	34787.385154724	Sum of GTIs [s]
ontime7	34787.467234731	Sum of GTIs [s]
ontime8	34774.779904485	Sum of GTIs [s]
l2events	367097	Number of level 2 events



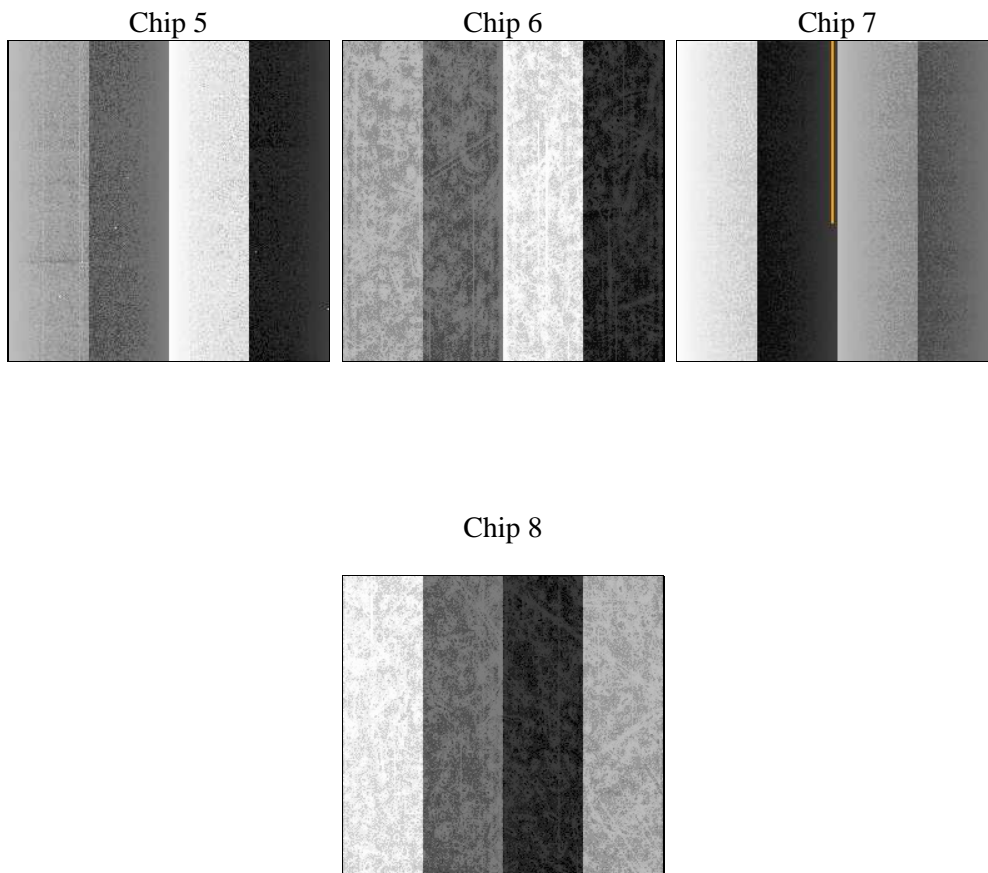
2 OBI

2.1 OBI

2.1.1 Images



2.1.2 Bias



2.1.3 Parameters

obi_num	0	Obi number	sched_exp_time	35000.000000	[s] Scheduled observation exposure time
ascdsver	10.5.2	Processing system revision	ontime	34787.467234731	Sum of GTIs [s]
caldbver	4.7.3	 	ontime5	34787.426194787	Sum of GTIs [s]
date	2017-02-15T06:34:38	Date and time of file creation	ontime6	34787.385154724	Sum of GTIs [s]
revision	1	Processing version of data	ontime7	34787.467234731	Sum of GTIs [s]
			ontime8	34774.779904485	Sum of GTIs [s]
			l1events	1305406	Number of level 1 events

2.1.4 Events

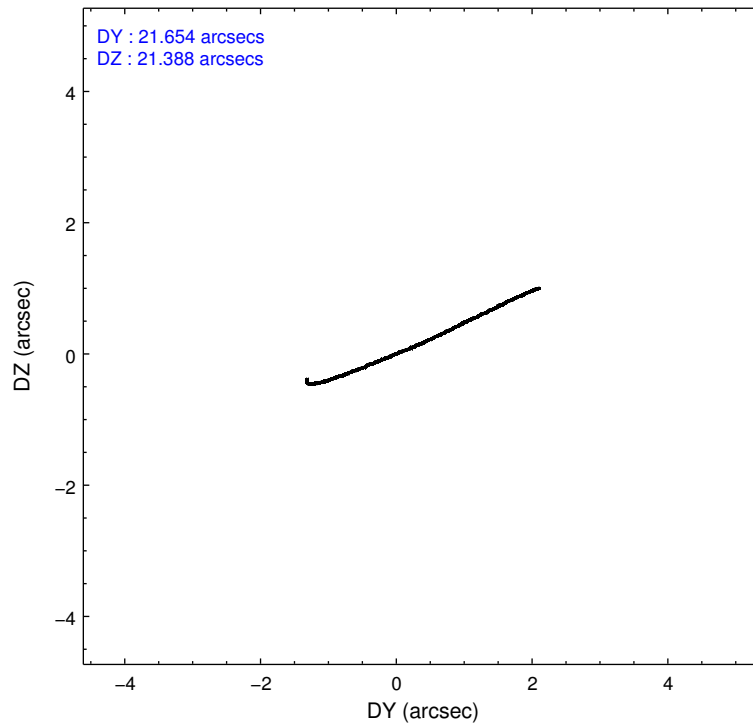
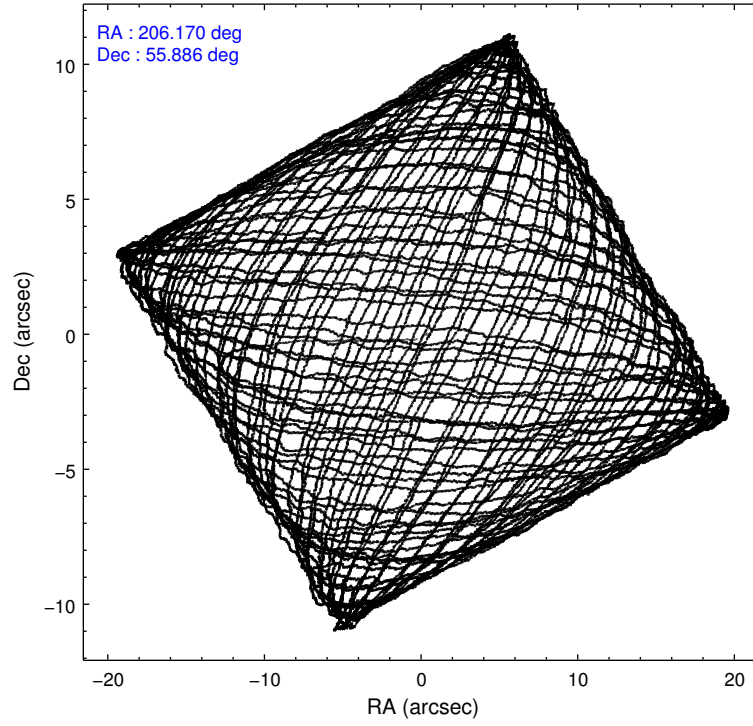
	ccd 5	ccd 6	ccd 7	ccd 8
level 1 events	390702	263186	322052	329466
rejected events	206748	235095	182173	246246
rejected %	52%	89%	56%	74%

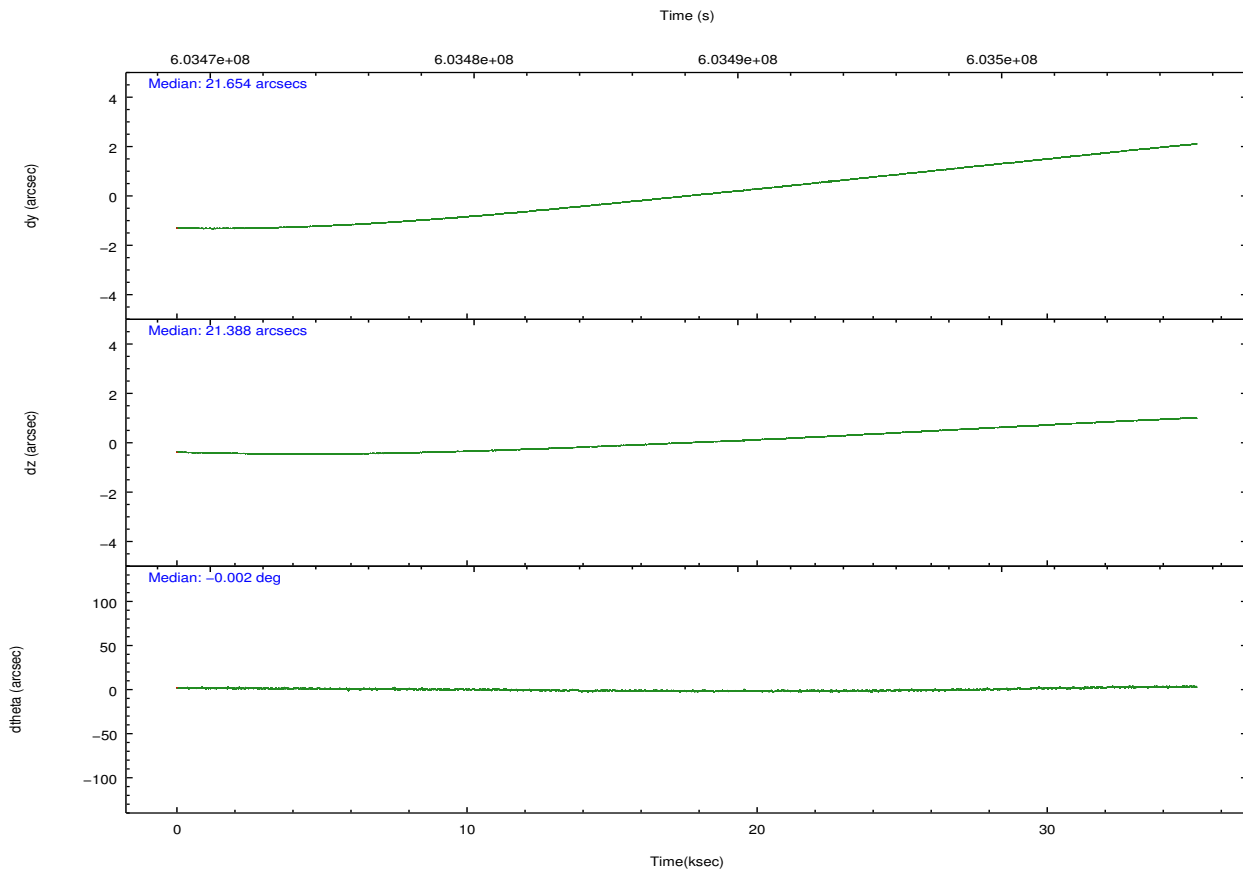
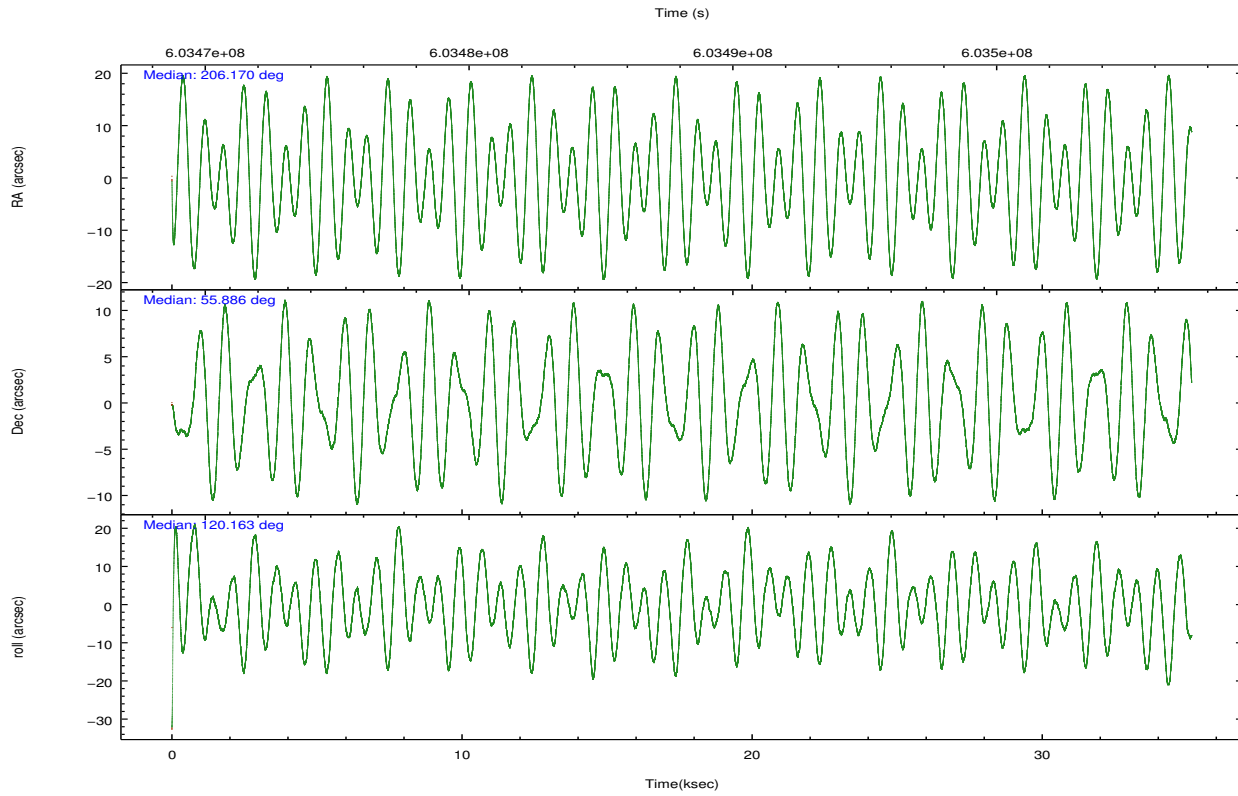
	ccd 5	ccd 6	ccd 7	ccd 8
grade 0 events	10187	8706	11889	23041
	2%	3%	3%	6%
grade 1 events	1157	108	407	254
	0%	0%	0%	0%
grade 2 events	57700	7180	29927	20456
	14%	2%	9%	6%
grade 3 events	5662	2653	10462	8579
	1%	1%	3%	2%
grade 4 events	5219	2545	10127	8090
	1%	0%	3%	2%
grade 5 events	25753	11201	30067	17029
	6%	4%	9%	5%
grade 6 events	105218	7015	77494	23105
	26%	2%	24%	7%
grade 7 events	179806	223778	151679	228912
	46%	85%	47%	69%

2.2 Compared Parameters

Parameter	Planned	Actual	Parameter	Planned	Actual
Instrument	ACIS	ACIS	Obspar format version number	7	7
Detector	ACIS-5678	ACIS-5678	Obspar file type	PREDICTED	ACTUAL
Grating	NONE	NONE	Obspar update status	NONE	UPDATED
Data mode	VFAINT	VFAINT	Number of optional ACIS chips dropped	0	0
Observation mode	POINTING	POINTING	On-chip summing requested	N	N
[deg] Pointing RA	206.212996	206.1702494874996	Subarray requested	NONE	NONE
[deg] Pointing Dec	55.873137	55.88647876721575	Alternating exposures requested	N	N
[deg] Pointing Roll	119.968889	120.1608903549798	[s] Primary exposure time	0.000000	3.1
[mm] SIM focus pos	-0.684267	-0.6828225247311905			
[mm] SIM defocus	0	0.001444936568705701			
[mm] SIM translation stage pos	-190.132523	-190.1400660498719			
[mm] SIM translation stage offset	0	0.00754346686406393			
[s] Observation start time (MET)	603470648.184000	603469657.1615			
Observation start date	2017-02-14T14:42:59	2017-02-14T14:27:37			
[s] Observation end time (MET)	603505648.184000	603506149.72611			
Observation end date	2017-02-15T00:26:19	2017-02-15T00:35:49			
Read mode	TIMED	TIMED			

2.3 Aspect



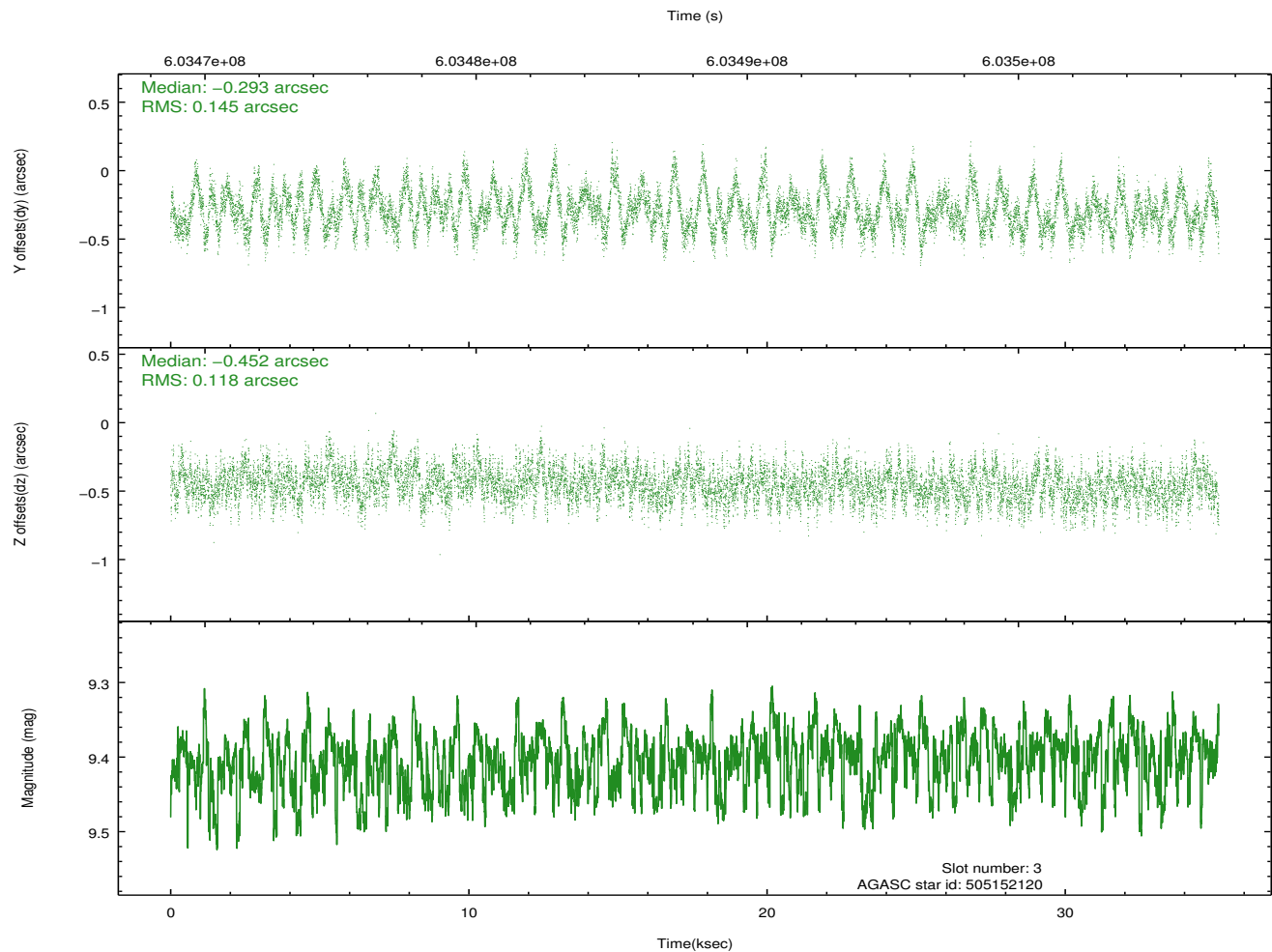
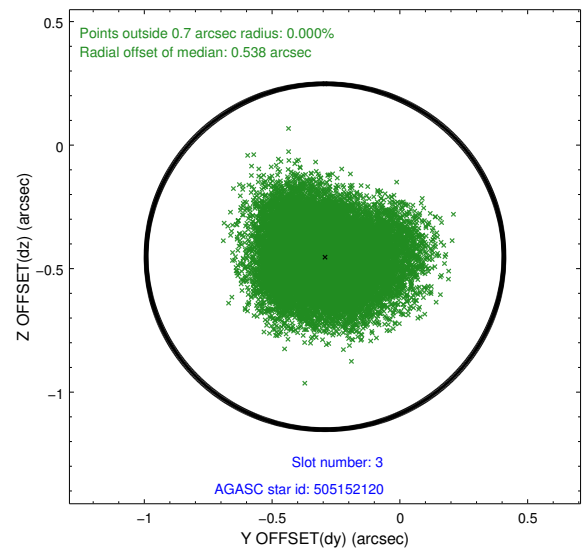
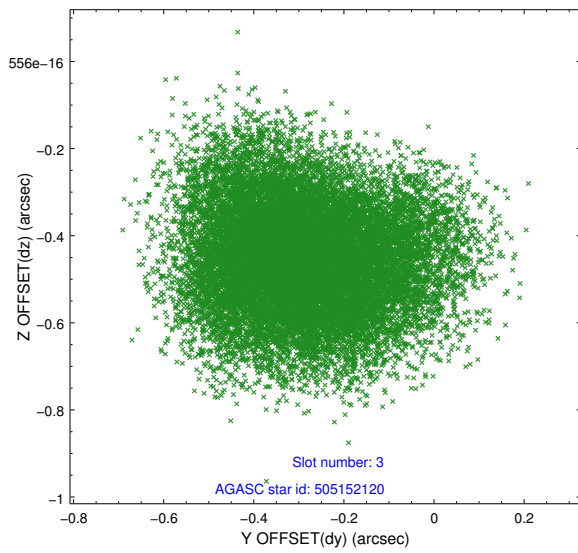


Slot Statistics

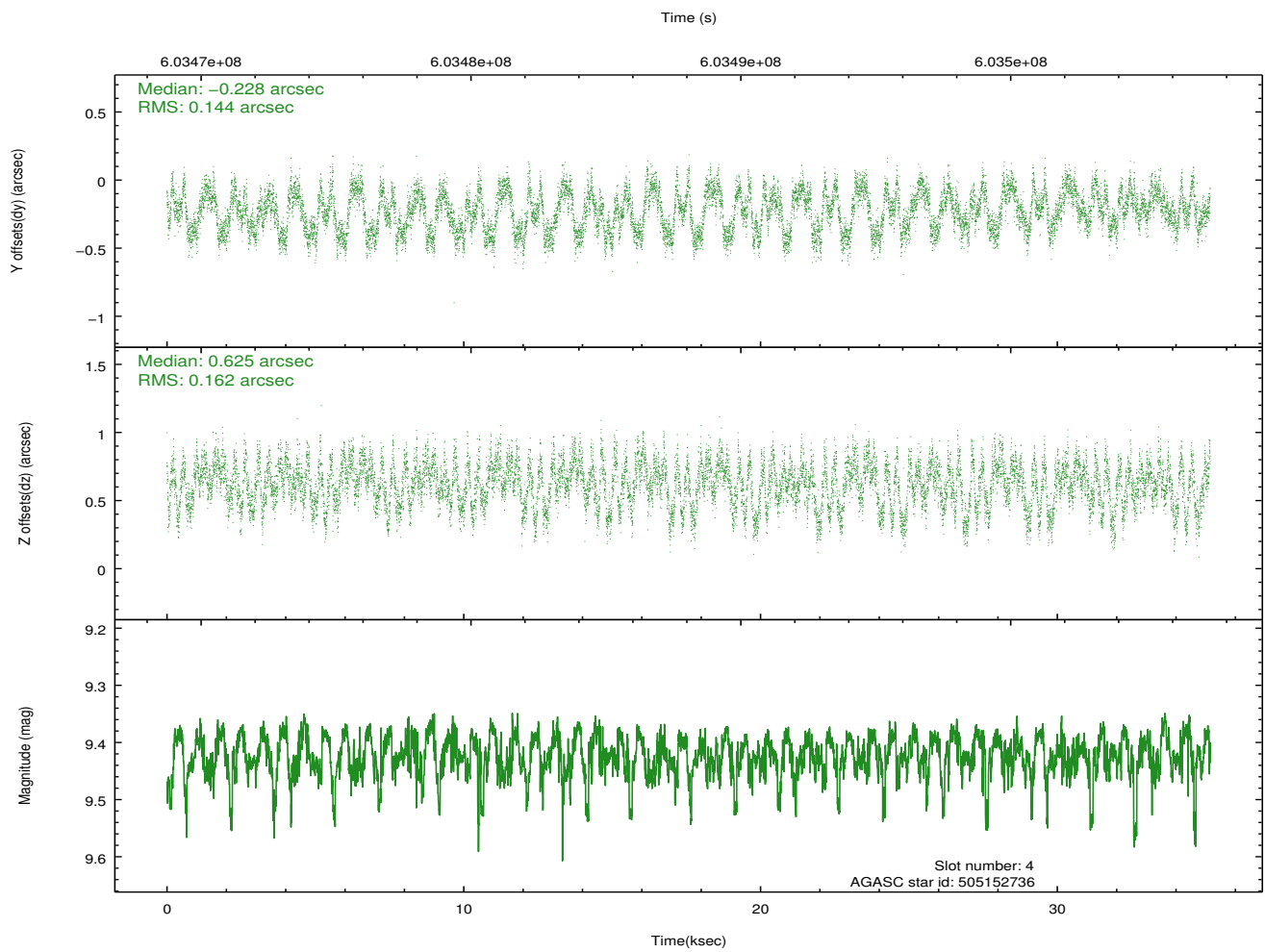
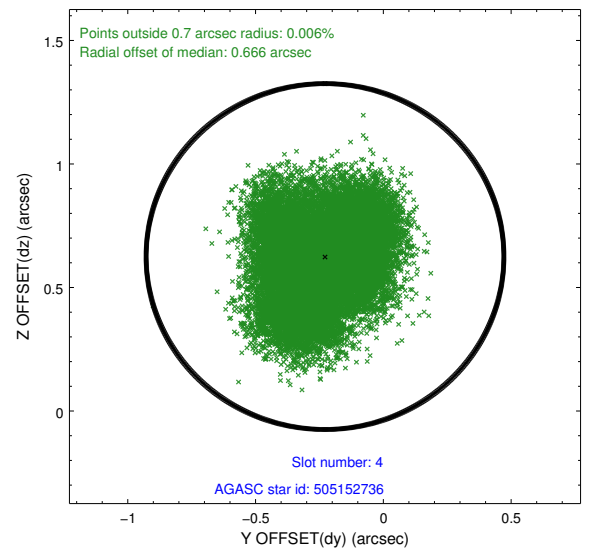
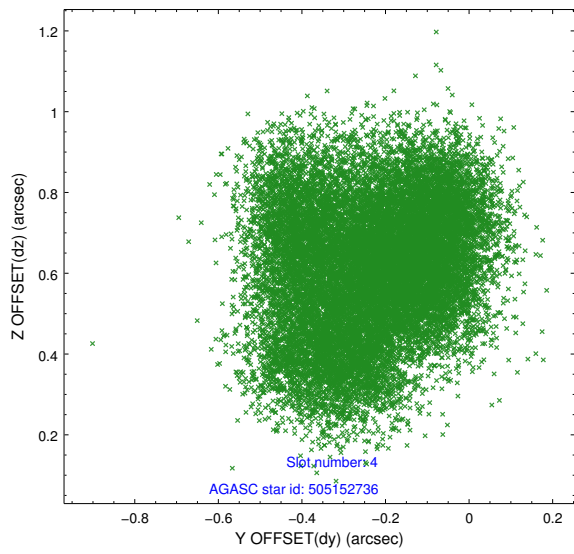
slot	status	used	id	mag	n_pts	med_dy	med_dz	dr1	dr2	ra	dec	mean_y	mean_z
0	FID		ACIS-S-2	7.11	8574	-0.312	-0.222	0.016	0.040	0.000000	0.000000	-775.27	-1743.23
1	FID		ACIS-S-4	7.22	8574	0.334	0.171	0.016	0.037	0.000000	0.000000	2138.69	165.52
2	FID		ACIS-S-6	7.36	8573	-0.050	0.060	0.013	0.021	0.000000	0.000000	387.10	802.90
3	GUIDE	used	505152120	9.40	17124	-0.293	-0.452	0.202	0.318	205.411901	56.033893	1315.05	1105.16
4	GUIDE	used	505152736	9.42	17124	-0.228	0.625	0.238	0.355	206.650172	55.777454	-738.24	-595.41
5	GUIDE	used	505163008	6.65	17148	0.108	-0.003	0.115	0.189	206.305054	55.879347	-79.50	-170.80
6	GUIDE	used	505163040	6.93	17145	-0.136	-0.543	0.109	0.177	206.025637	55.634983	-552.15	757.32
7	GUIDE	used	505159640	9.30	17127	0.542	0.388	0.177	0.287	207.764799	55.675028	-2159.97	-2389.72

2.4 Star Slots

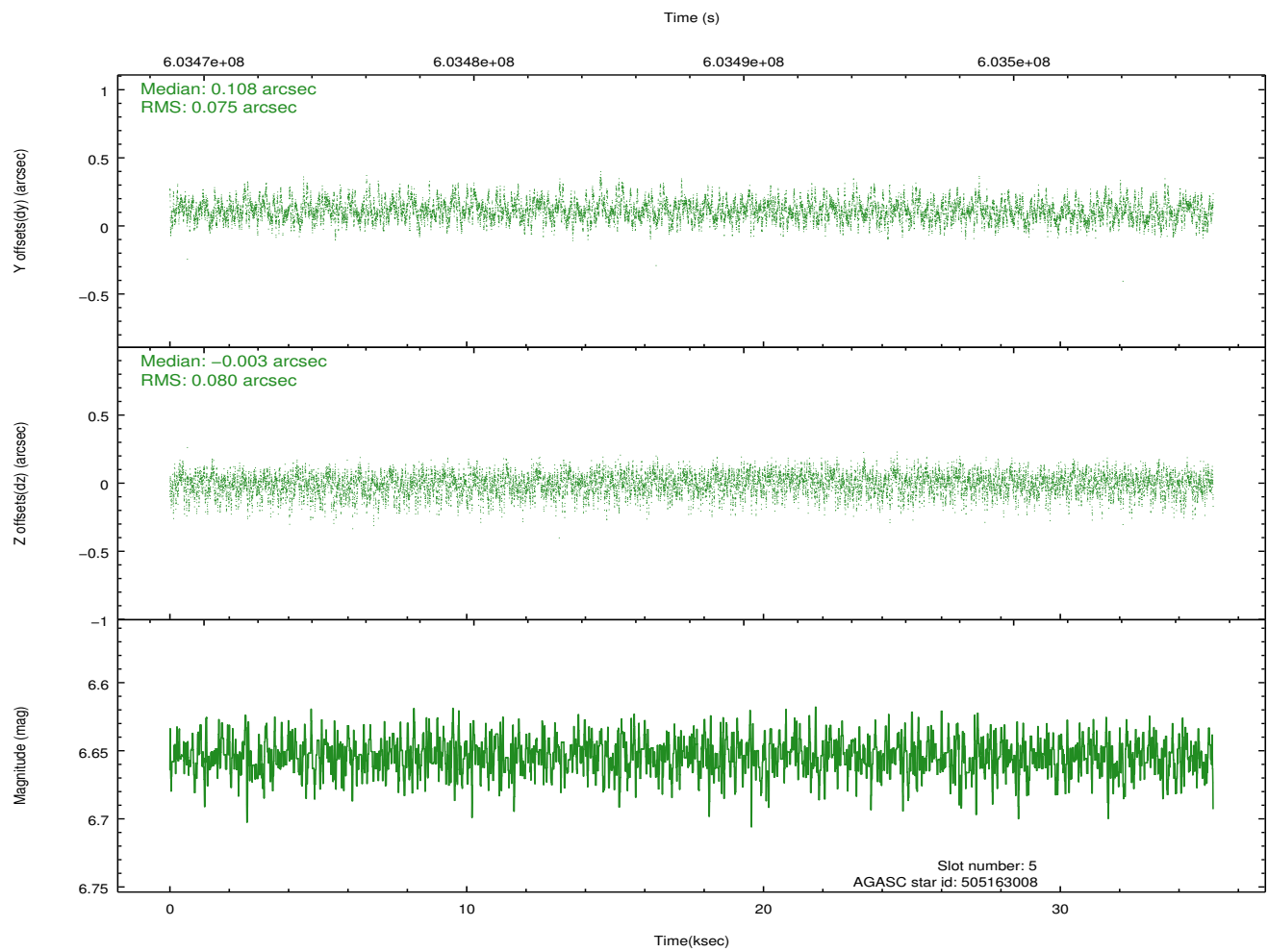
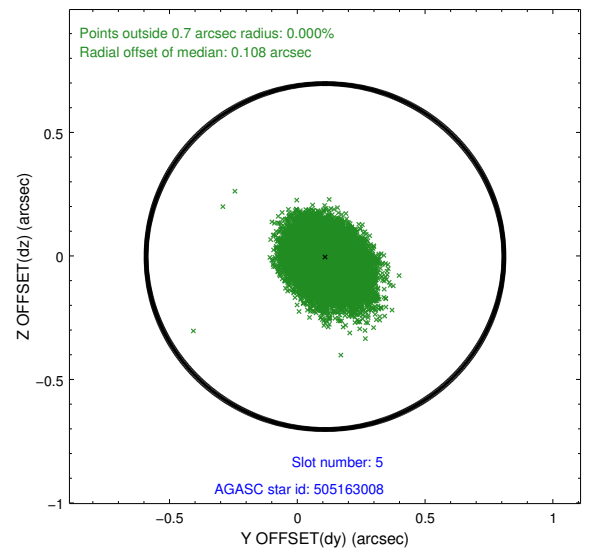
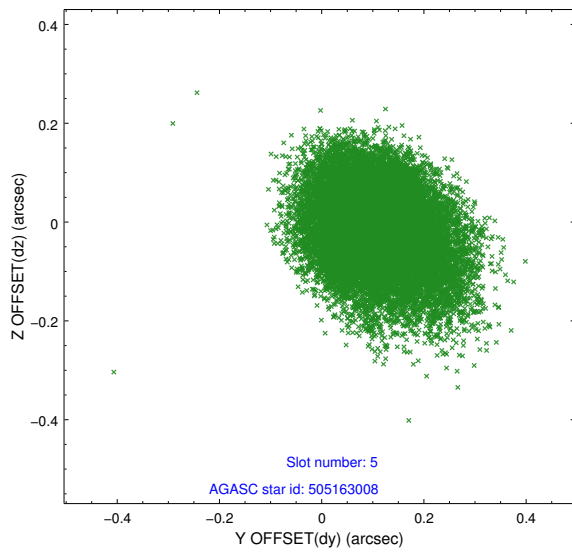
2.4.1 Slot 3



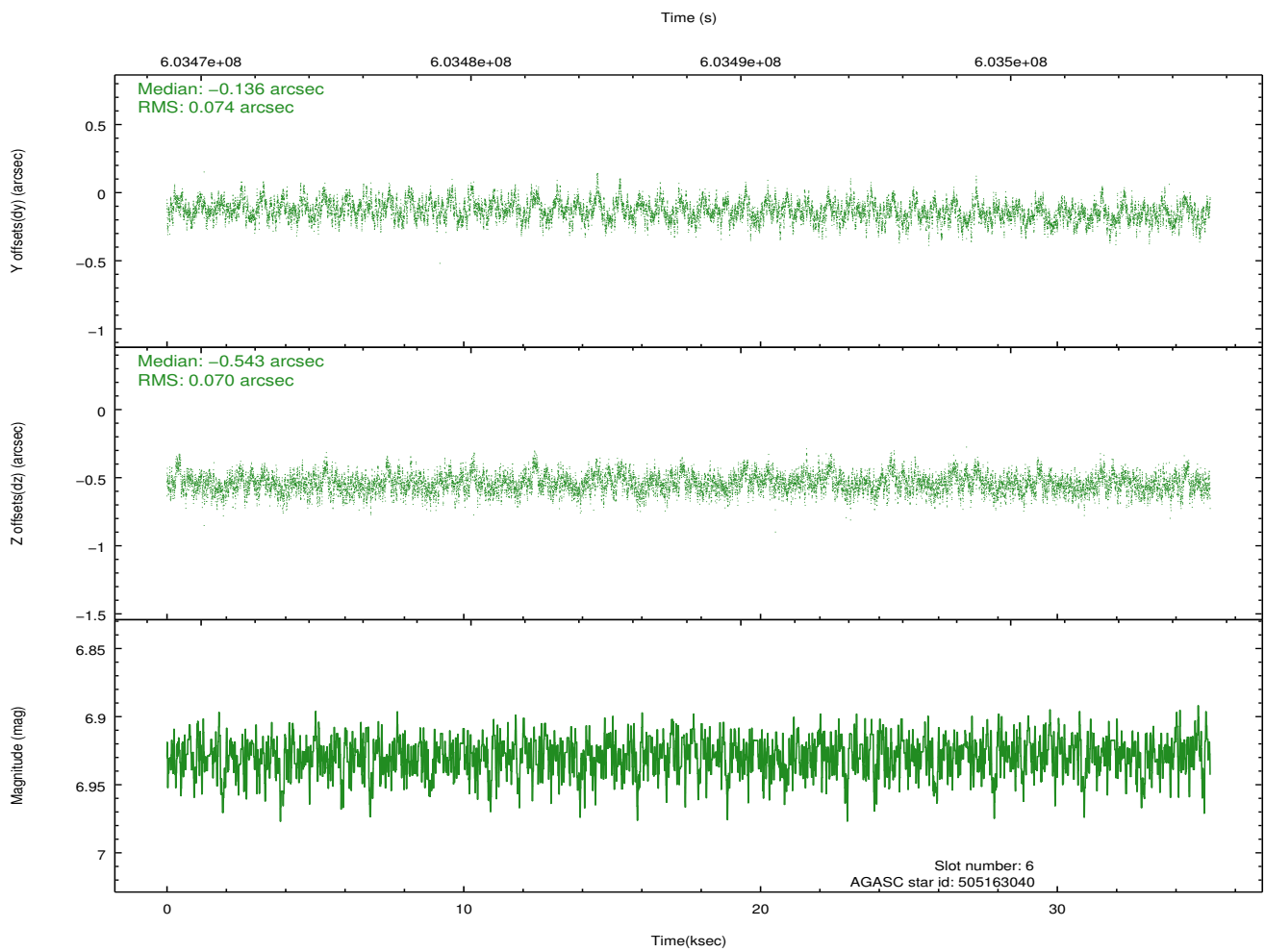
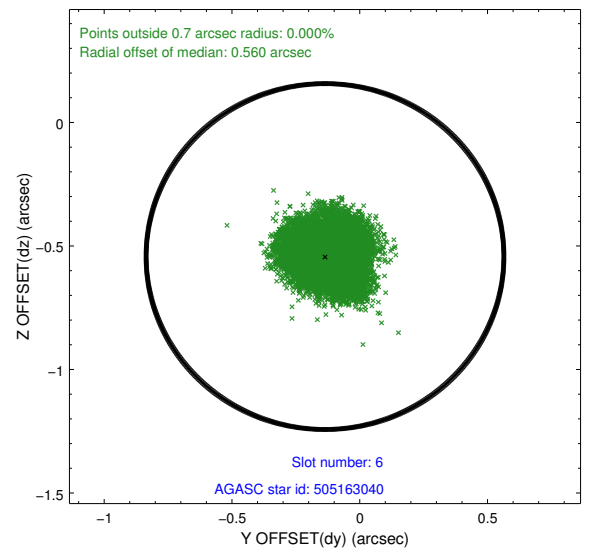
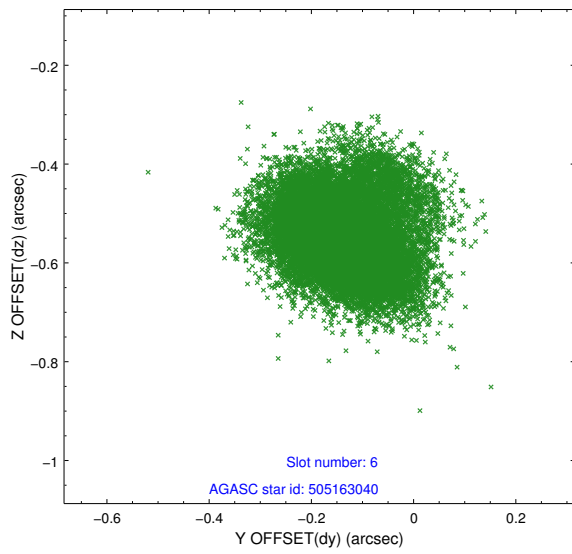
2.4.2 Slot 4



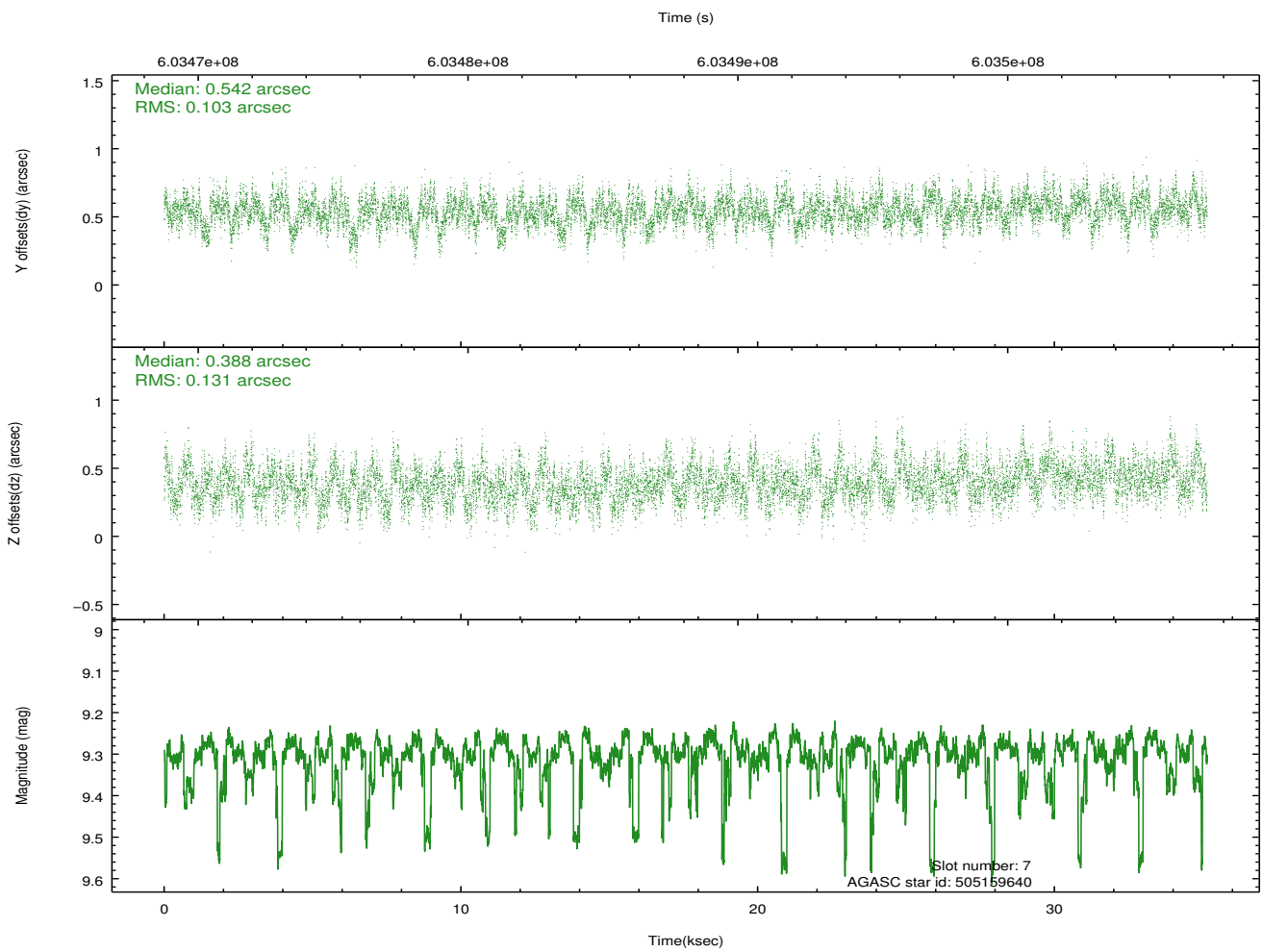
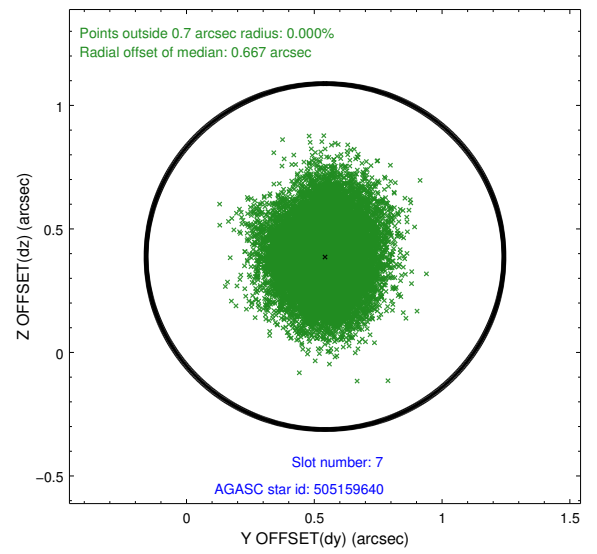
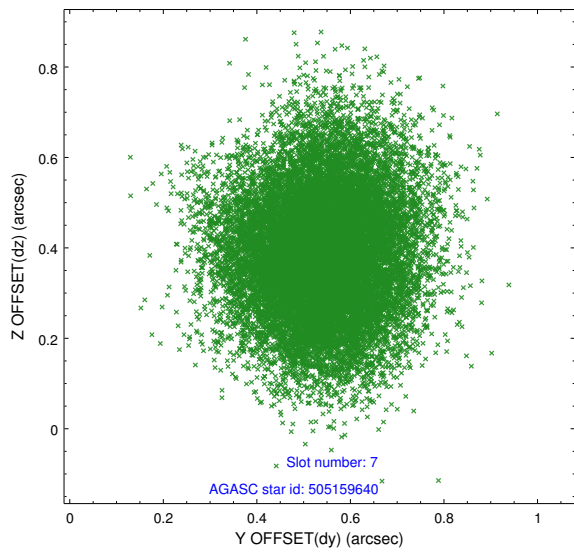
2.4.3 Slot 5



2.4.4 Slot 6

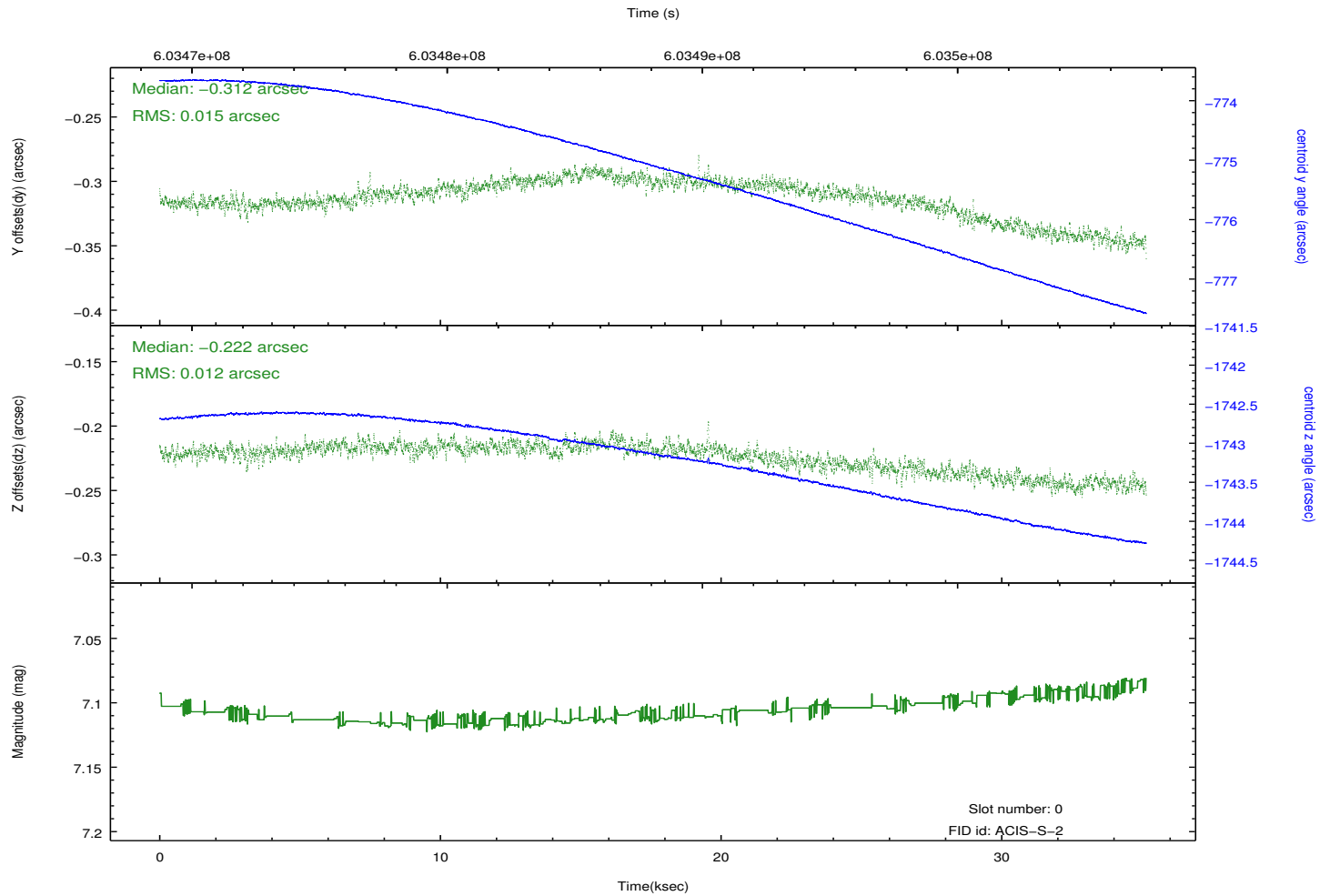
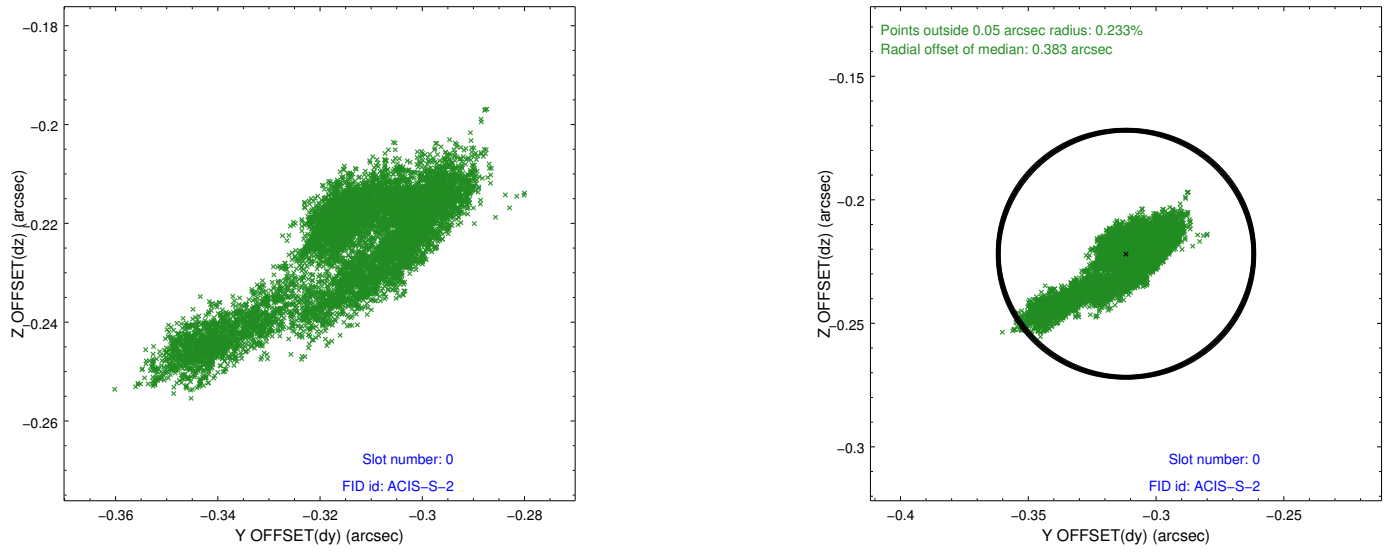


2.4.5 Slot 7

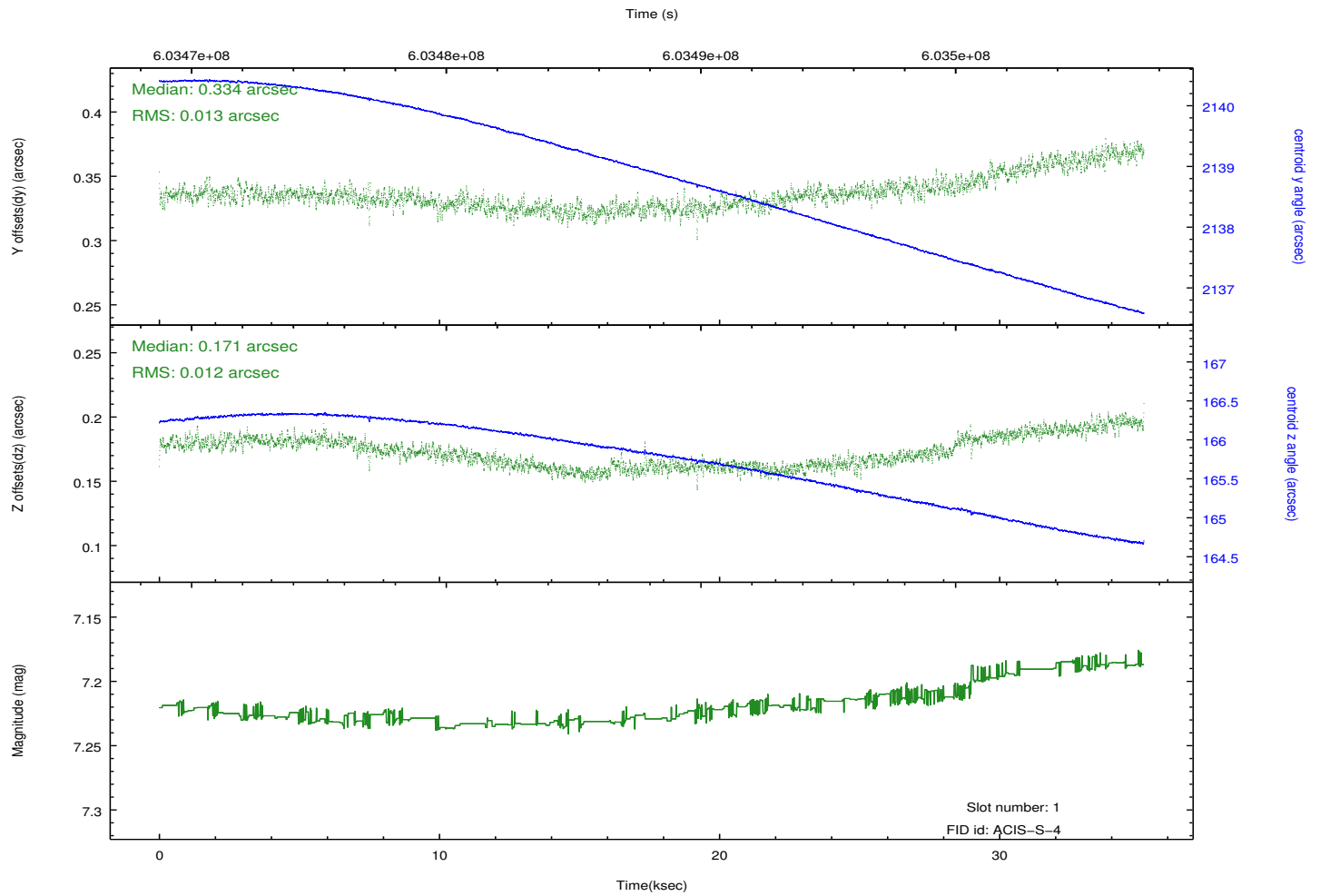
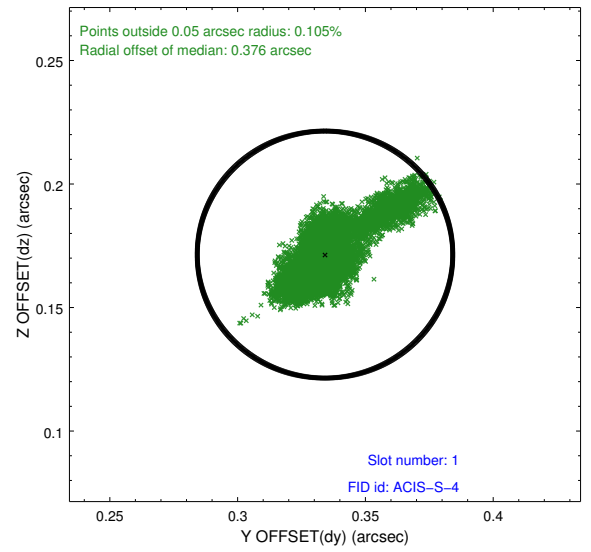
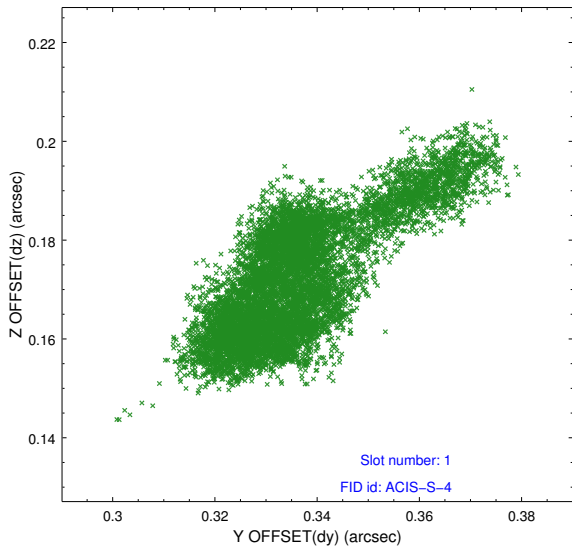


2.5 FID Slots

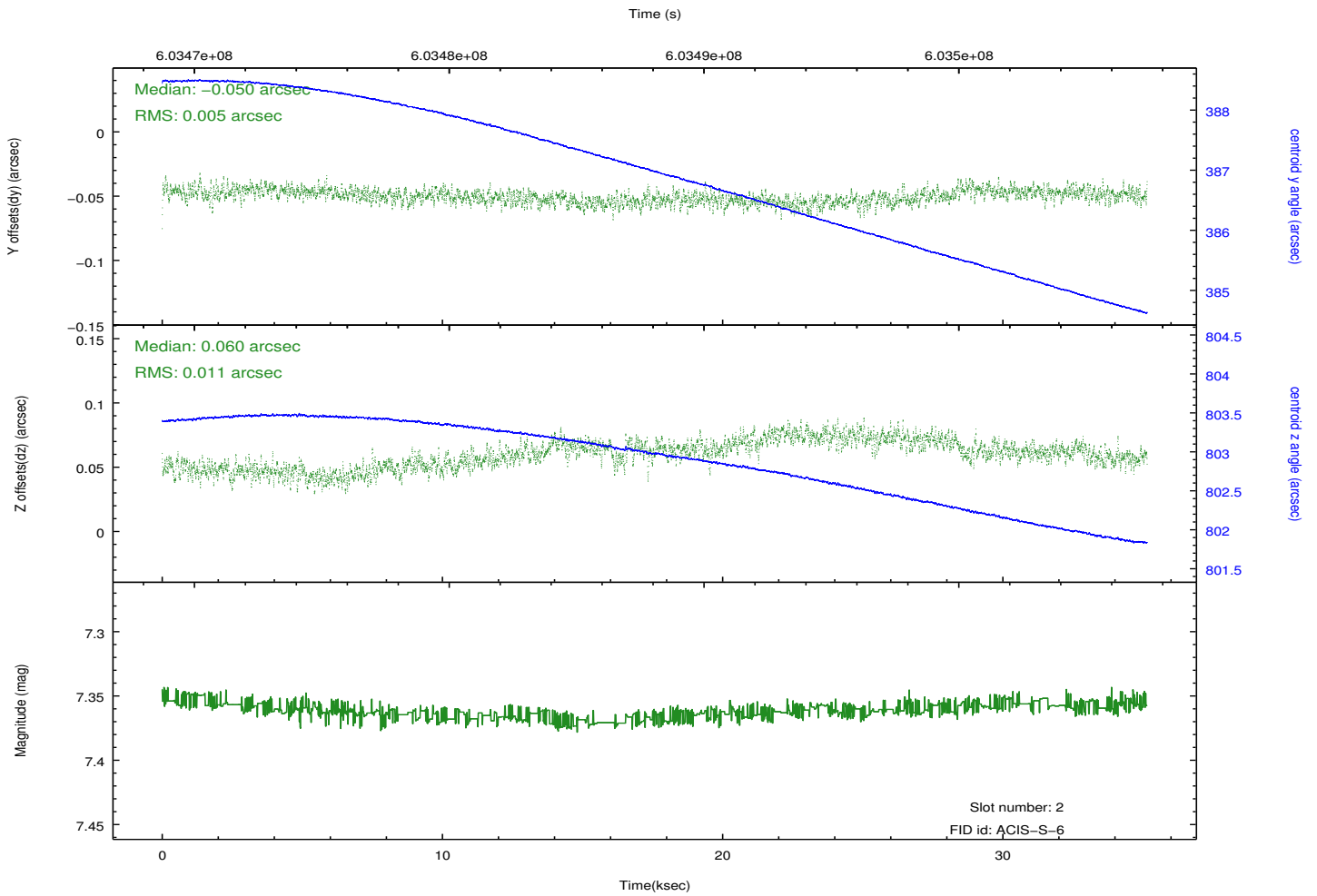
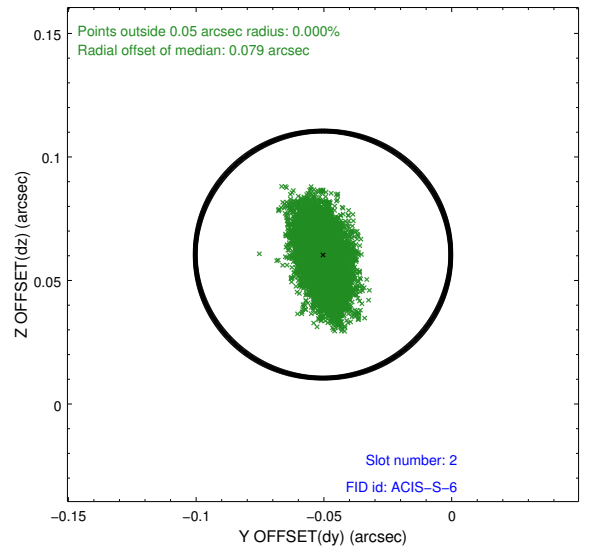
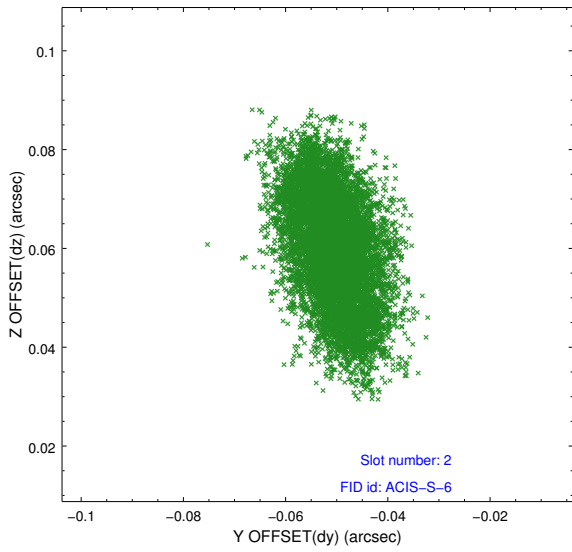
2.5.1 Slot 0



2.5.2 Slot 1



2.5.3 Slot 2



A Summary

A.1 Status

V&V Scientist	Joy Nichols
V&V Date (YYYY-MM-DD)	2017.02.15
V&V Edition	1
V&V Disposition and Status	OK
V&V Charge Time	34.787467234731

A.2 Comments