

V&V Reference Report

L2 ASCDS Version : 10.5.2

Observation 19962 - L2 Version 1
Chandra X-Ray Center

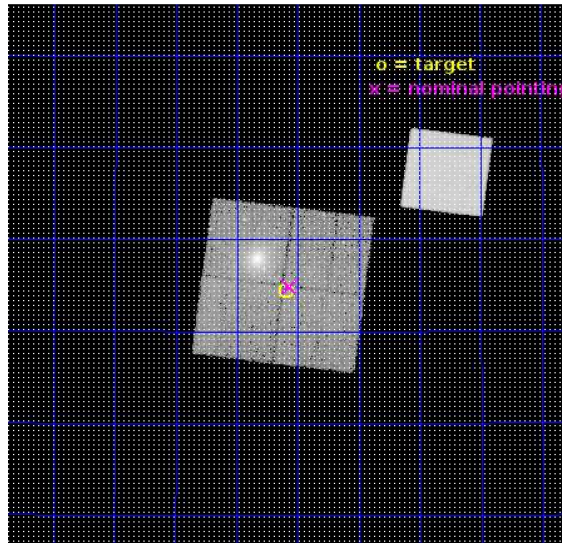
L2 Processing Date : Dec 18 2016

Contents

1	Front	2
2	OBI	3
2.1	OBI	3
2.1.1	Images	3
2.1.2	Bias	3
2.1.3	Parameters	4
2.1.4	Events	4
2.2	Compared Parameters	5
2.3	Aspect	6
2.4	Star Slots	9
2.4.1	Slot 3	9
2.4.2	Slot 4	10
2.4.3	Slot 5	11
2.4.4	Slot 6	12
2.4.5	Slot 7	13
2.5	FID Slots	14
2.5.1	Slot 0	14
2.5.2	Slot 1	15
2.5.3	Slot 2	16
A	Summary	17
A.1	Status	17
A.2	Comments	17

1 Front

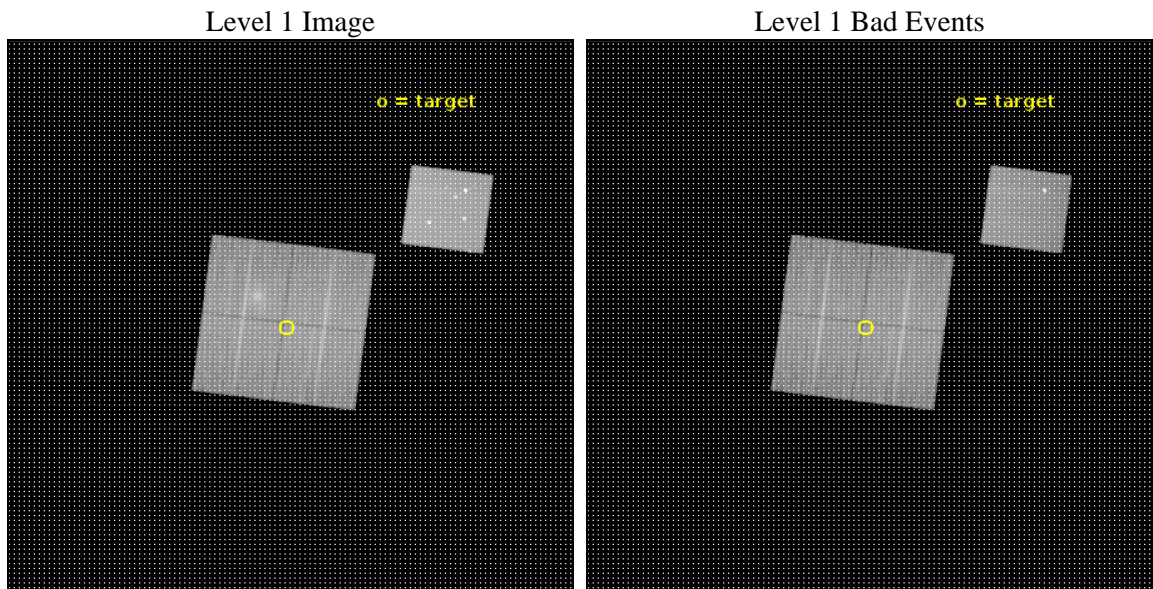
seq_num	801597	Sequence number
obs_id	19962	Observation id
title	Mapping an unusually Relaxed Non-Cool-Core Cluster out to the Viral Radius	Proposal title
observer	Yuanyuan Su	Principal investigator
object	Abell 586	Source name
dtcycle	0	
cycle	P	events from which exps? Prim/Second/Both
ra_targ	113.0225	Observer's specified target RA [deg]
dec_targ	31.57375	Observer's specified target Dec [deg]
ra_nom	113.01728981978	Nominal RA [deg]
dec_nom	31.581257276174	Nominal Dec [deg]
roll_nom	97.211419114767	Nominal Roll [deg]
revision	1	Processing version of data
ontime	32063.300246716	Sum of GTIs [s]
livetime	31644.369624334	Livetime [s]
ontime0	32063.300246716	Sum of GTIs [s]
ontime1	32060.159186482	Sum of GTIs [s]
ontime2	32063.300246716	Sum of GTIs [s]
ontime3	32063.300246716	Sum of GTIs [s]
ontime5	32063.300246716	Sum of GTIs [s]
l2events	275293	Number of level 2 events



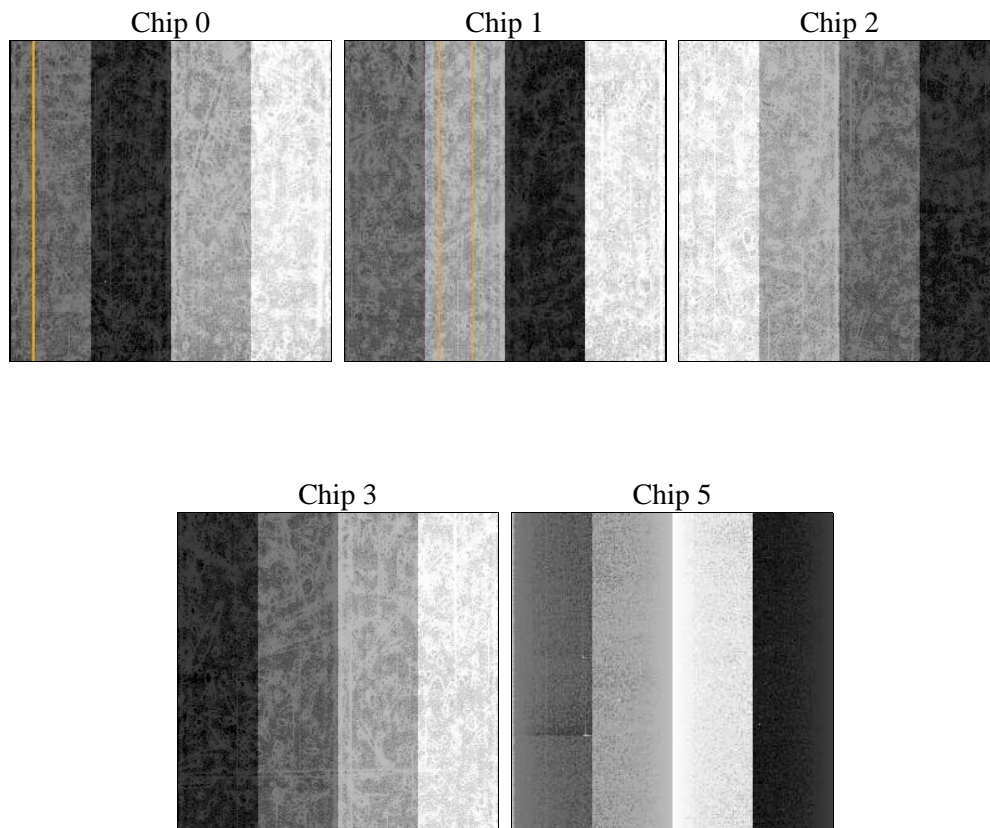
2 OBI

2.1 OBI

2.1.1 Images



2.1.2 Bias



2.1.3 Parameters

obi_num	0	Obi number	sched_exp_time	32000.000000	[s] Scheduled observation exposure time
ascdsver	10.5.2	Processing system revision	ontime	32063.300246716	Sum of GTIs [s]
caldbver	4.7.3	 	ontime0	32063.300246716	Sum of GTIs [s]
date	2016-12-19T03:36:51	Date and time of file creation	ontime1	32060.159186482	Sum of GTIs [s]
revision	1	Processing version of data	ontime2	32063.300246716	Sum of GTIs [s]
			ontime3	32063.300246716	Sum of GTIs [s]
			ontime5	32063.300246716	Sum of GTIs [s]
			l1events	1286506	Number of level 1 events

2.1.4 Events

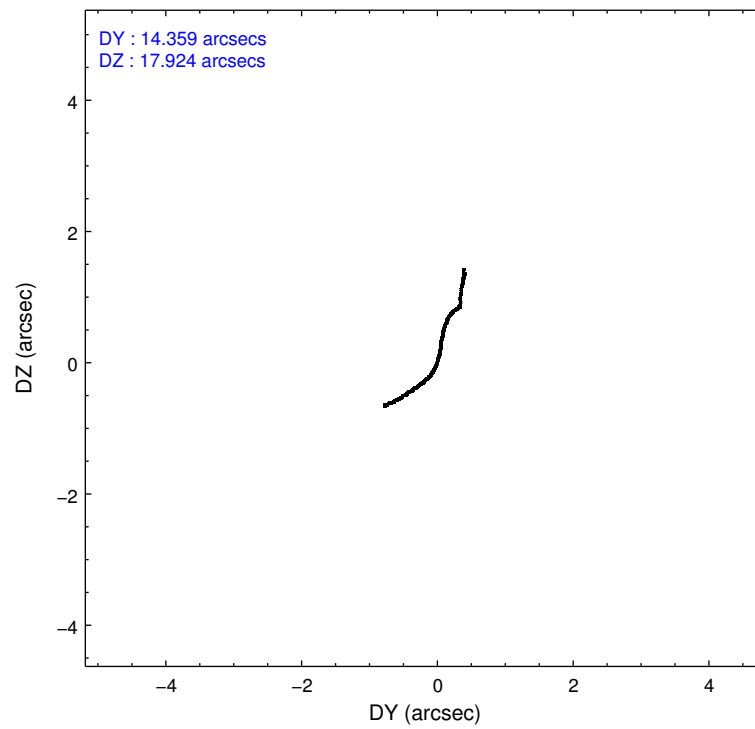
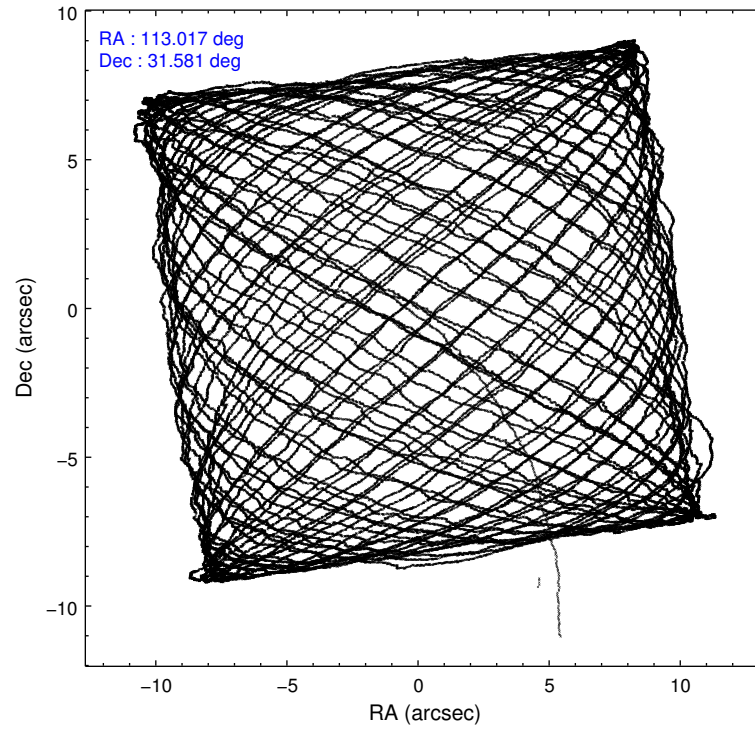
	ccd 0	ccd 1	ccd 2	ccd 3	ccd 5
level 1 events	229317	212325	228251	222092	394521
rejected events	181630	183821	202681	198311	200398
rejected %	79%	86%	88%	89%	50%

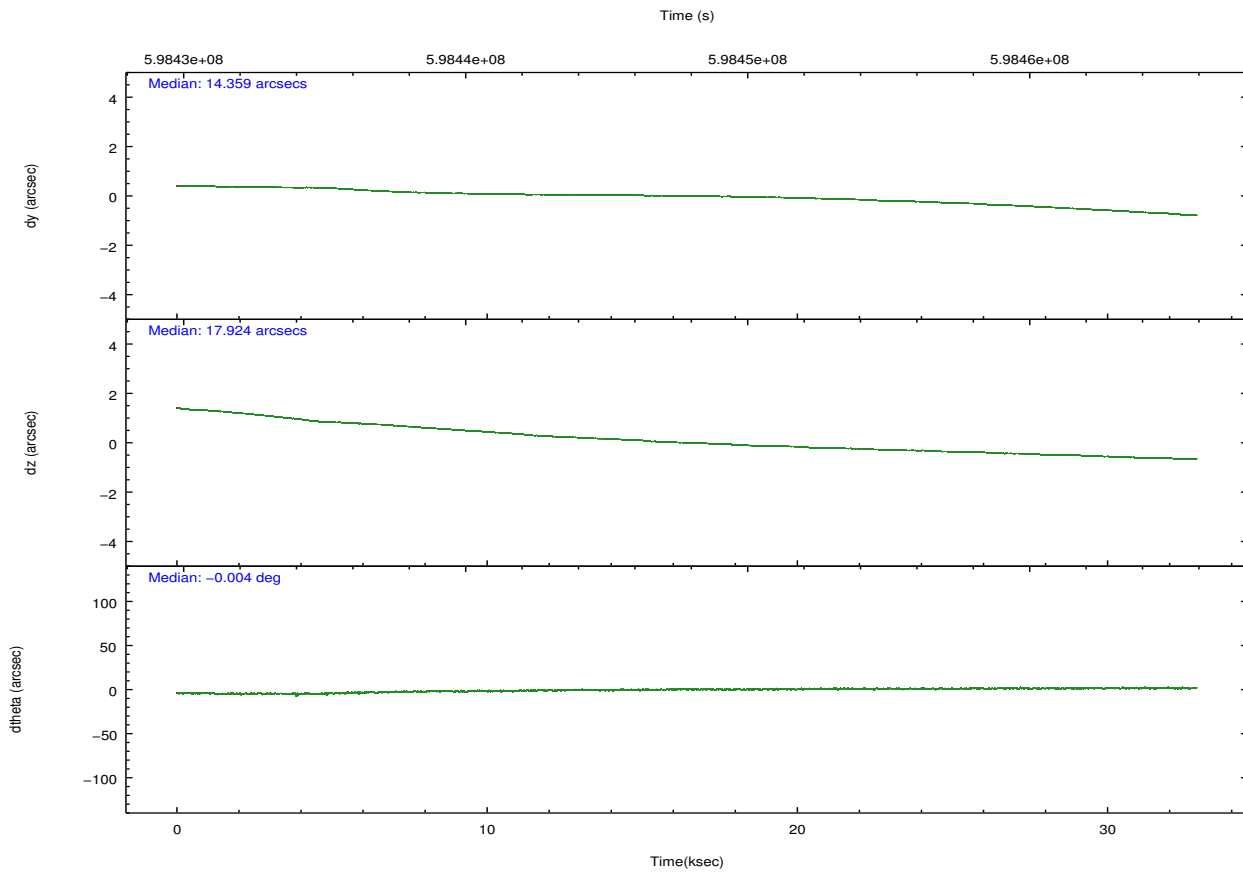
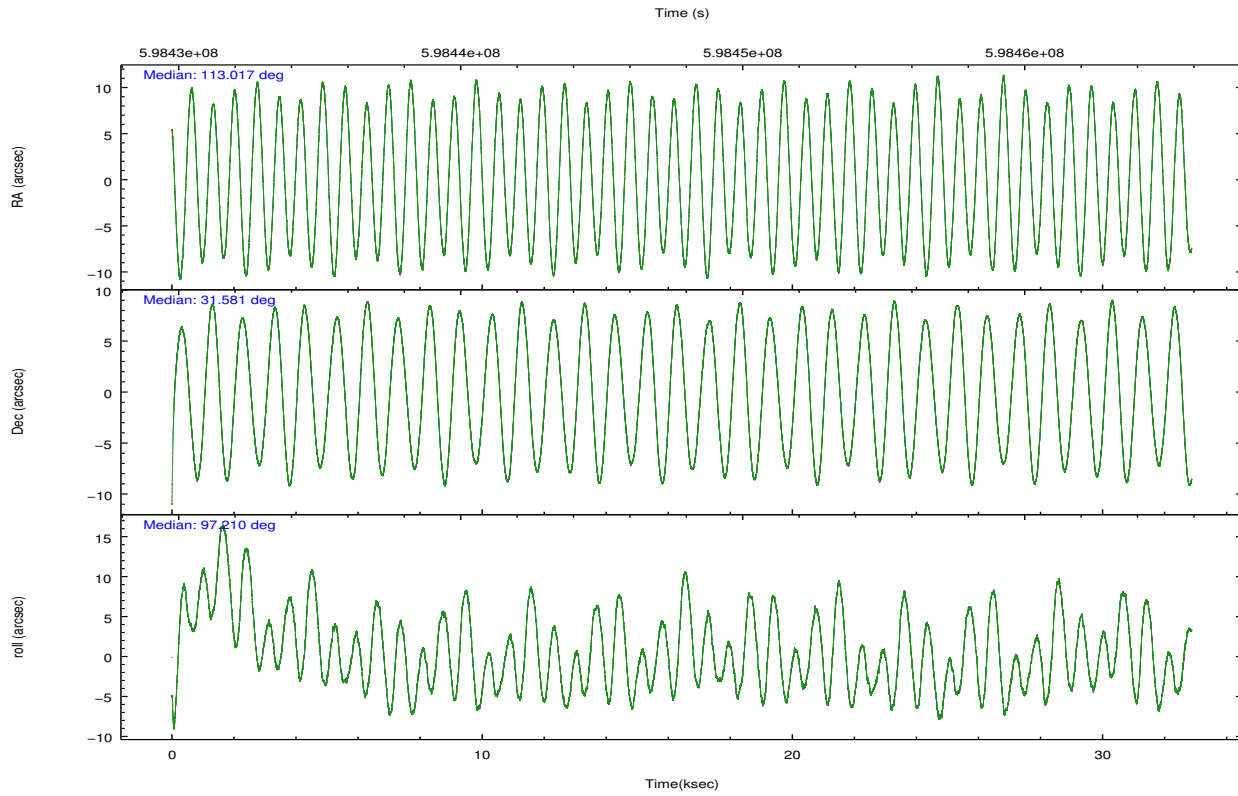
	ccd 0	ccd 1	ccd 2	ccd 3	ccd 5
grade 0 events	26270	10004	9281	8100	28916
	11%	4%	4%	3%	7%
grade 1 events	220	129	133	108	763
	0%	0%	0%	0%	0%
grade 2 events	8781	6697	6224	5348	57224
	3%	3%	2%	2%	14%
grade 3 events	3378	2798	2468	2576	6077
	1%	1%	1%	1%	1%
grade 4 events	3245	2811	2633	2574	5661
	1%	1%	1%	1%	1%
grade 5 events	10187	10460	9329	11224	27989
	4%	4%	4%	5%	7%
grade 6 events	6020	6200	4971	5186	96296
	2%	2%	2%	2%	24%
grade 7 events	171216	173226	193212	186976	171595
	74%	81%	84%	84%	43%

2.2 Compared Parameters

Parameter	Planned	Actual	Parameter	Planned	Actual
Instrument	ACIS	ACIS	Obspar format version number	7	7
Detector	ACIS-01235	ACIS-01235	Obspar file type	PREDICTED	ACTUAL
Grating	NONE	NONE	Obspar update status	NONE	UPDATED
Data mode	FAINT	FAINT	CCD I0 on	Y	Y
Observation mode	POINTING	POINTING	CCD I1 on	Y	Y
[deg] Pointing RA	113.036980	113.0172898197797	CCD I2 on	Y	Y
[deg] Pointing Dec	31.559336	31.58125727617359	CCD I3 on	Y	Y
[deg] Pointing Roll	96.992417	97.21141911476734	CCD S0 on	N	N
[mm] SIM focus pos	-0.782348	-0.7809083437167272	CCD S1 on	Y	Y
[mm] SIM defocus	0	0.001439871863259334	CCD S2 on	O1	N
[mm] SIM translation stage pos	-233.592463	-233.5874344608287	CCD S3 on	N	N
[mm] SIM translation stage offset	0	-0.005018542100998502	CCD S4 on	N	N
[s] Observation start time (MET)	598432262.184000	598430176.2072901	CCD S5 on	N	N
Observation start date	2016-12-18T07:09:54	2016-12-18T06:36:16	Number of optional ACIS chips dropped	1	1
[s] Observation end time (MET)	598464262.184000	598465115.8968101	On-chip summing requested	N	N
Observation end date	2016-12-18T16:03:14	2016-12-18T16:18:35	Subarray requested	NONE	NONE
Read mode	TIMED	TIMED	Alternating exposures requested	N	N
			[s] Primary exposure time	0.000000	3.1

2.3 Aspect



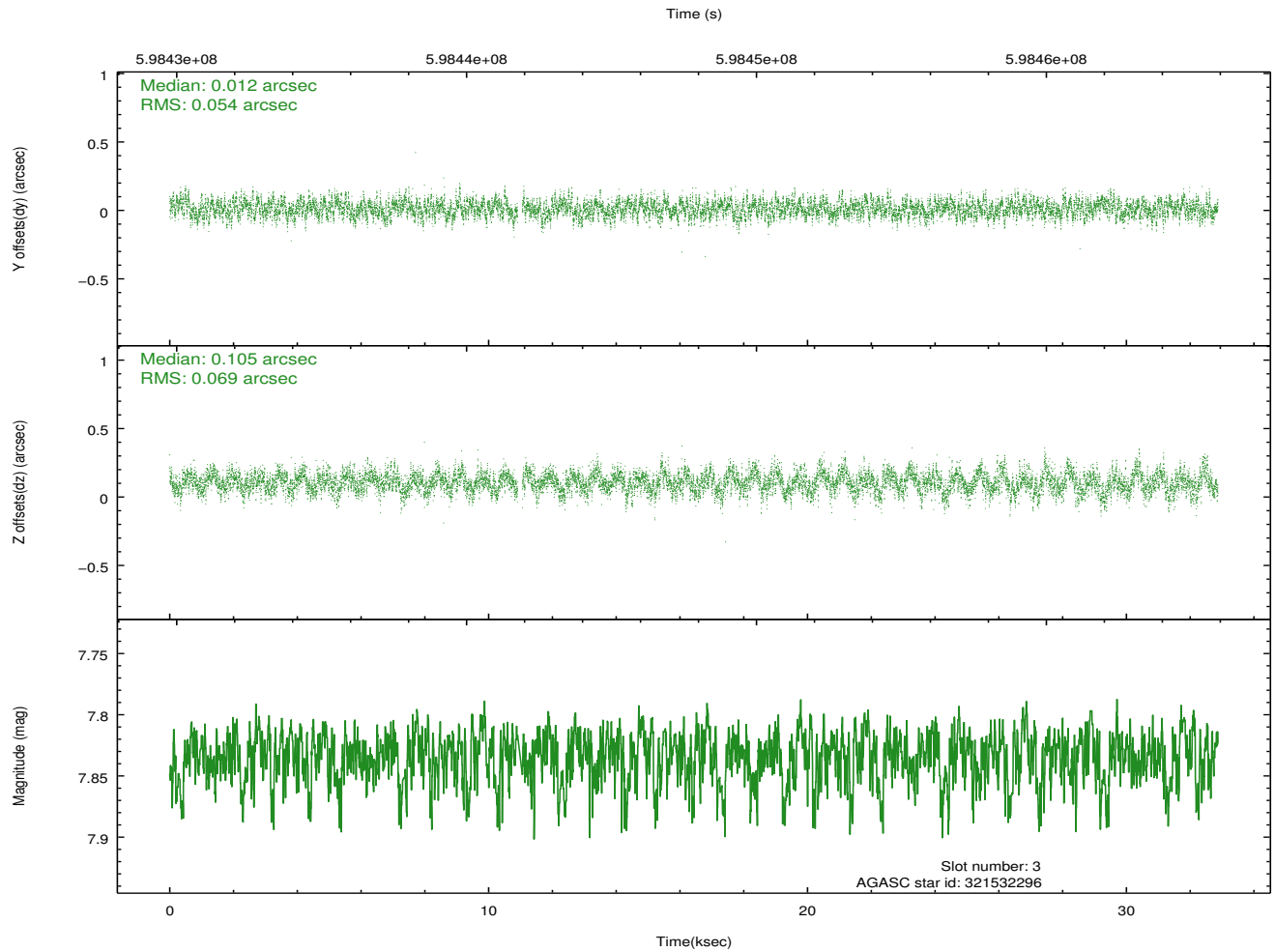
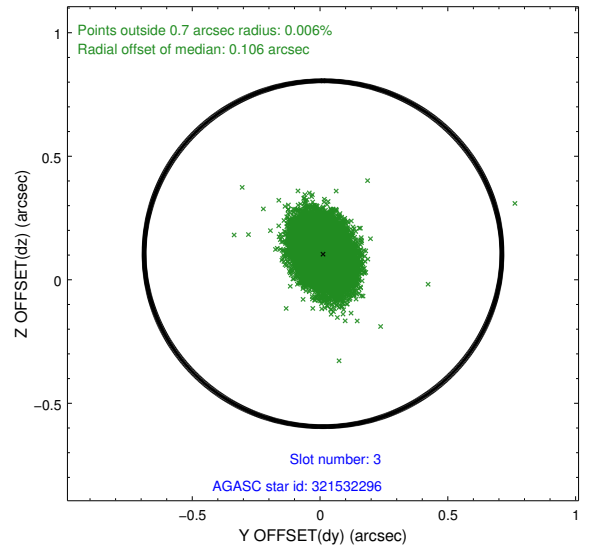
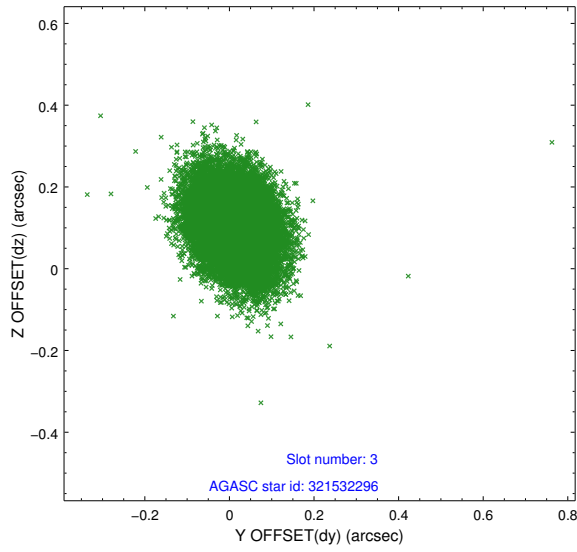


Slot Statistics

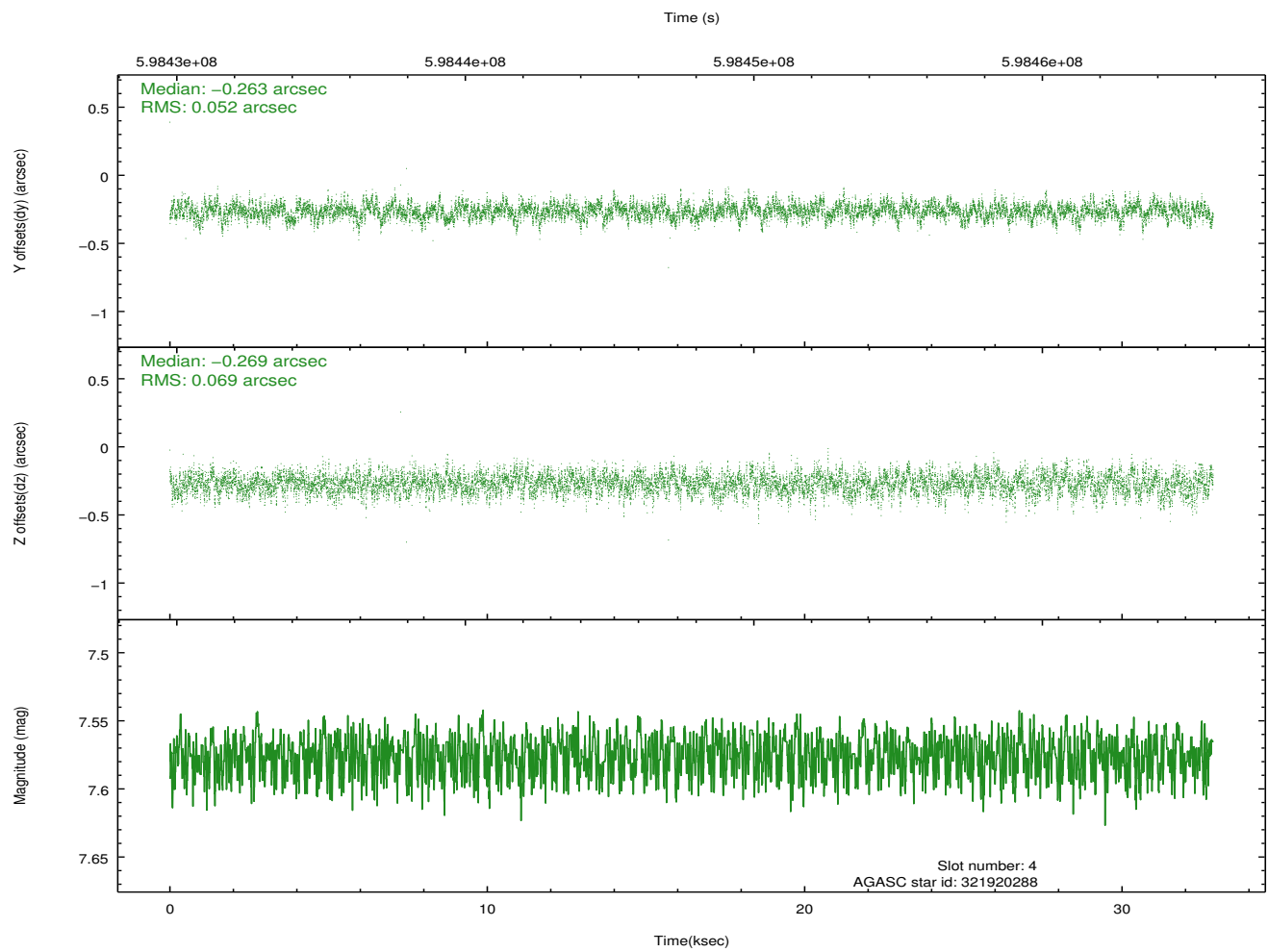
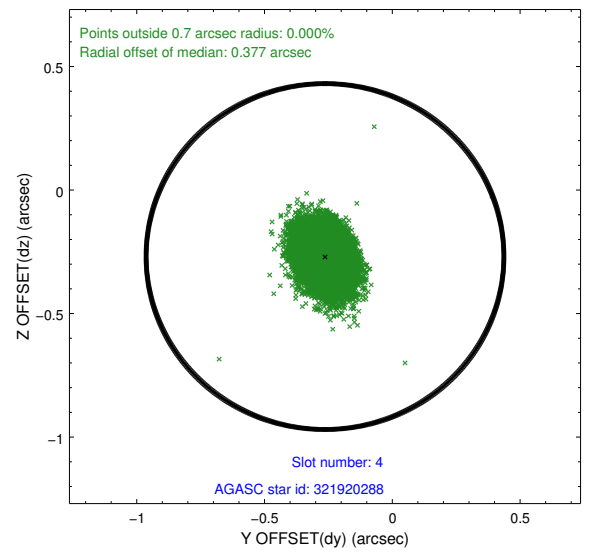
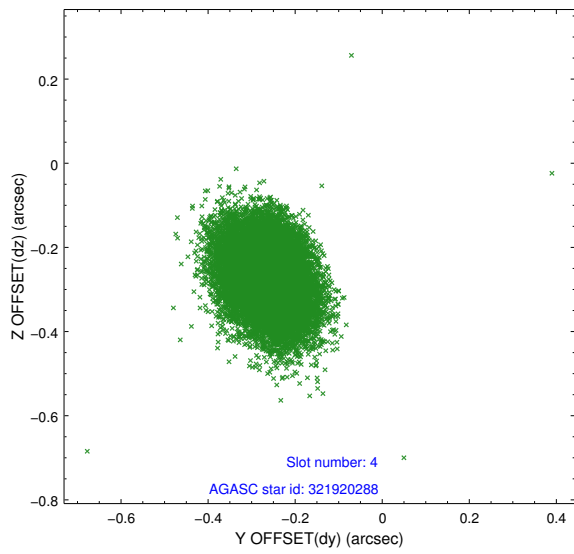
slot	status	used	id	mag	n_pts	med_dy	med_dz	dr1	dr2	ra	dec	mean_y	mean_z
0	FID		ACIS-I-1	7.06	8018	0.066	-0.016	0.022	0.032	0.000000	0.000000	925.28	-841.73
1	FID		ACIS-I-5	7.07	8017	-0.326	0.039	0.010	0.017	0.000000	0.000000	-1823.26	1055.69
2	FID		ACIS-I-6	7.07	8017	0.169	0.047	0.020	0.030	0.000000	0.000000	390.78	1700.35
3	GUIDE	used	321532296	7.83	15962	0.012	0.105	0.093	0.151	113.066115	31.102052	-1644.81	111.44
4	GUIDE	used	321920288	7.58	16033	-0.263	-0.269	0.090	0.151	112.257380	31.993844	1853.19	2167.91
5	GUIDE	used	321527936	7.99	16028	0.046	-0.056	0.098	0.164	112.604277	31.145118	-1315.28	1504.92
6	GUIDE	used	321529016	9.06	16018	0.488	0.458	0.143	0.227	113.590081	31.231460	-1374.40	-1545.73
7	GUIDE	used	321921352	9.14	16011	-0.280	-0.235	0.151	0.235	112.322646	32.133037	2321.92	1909.05

2.4 Star Slots

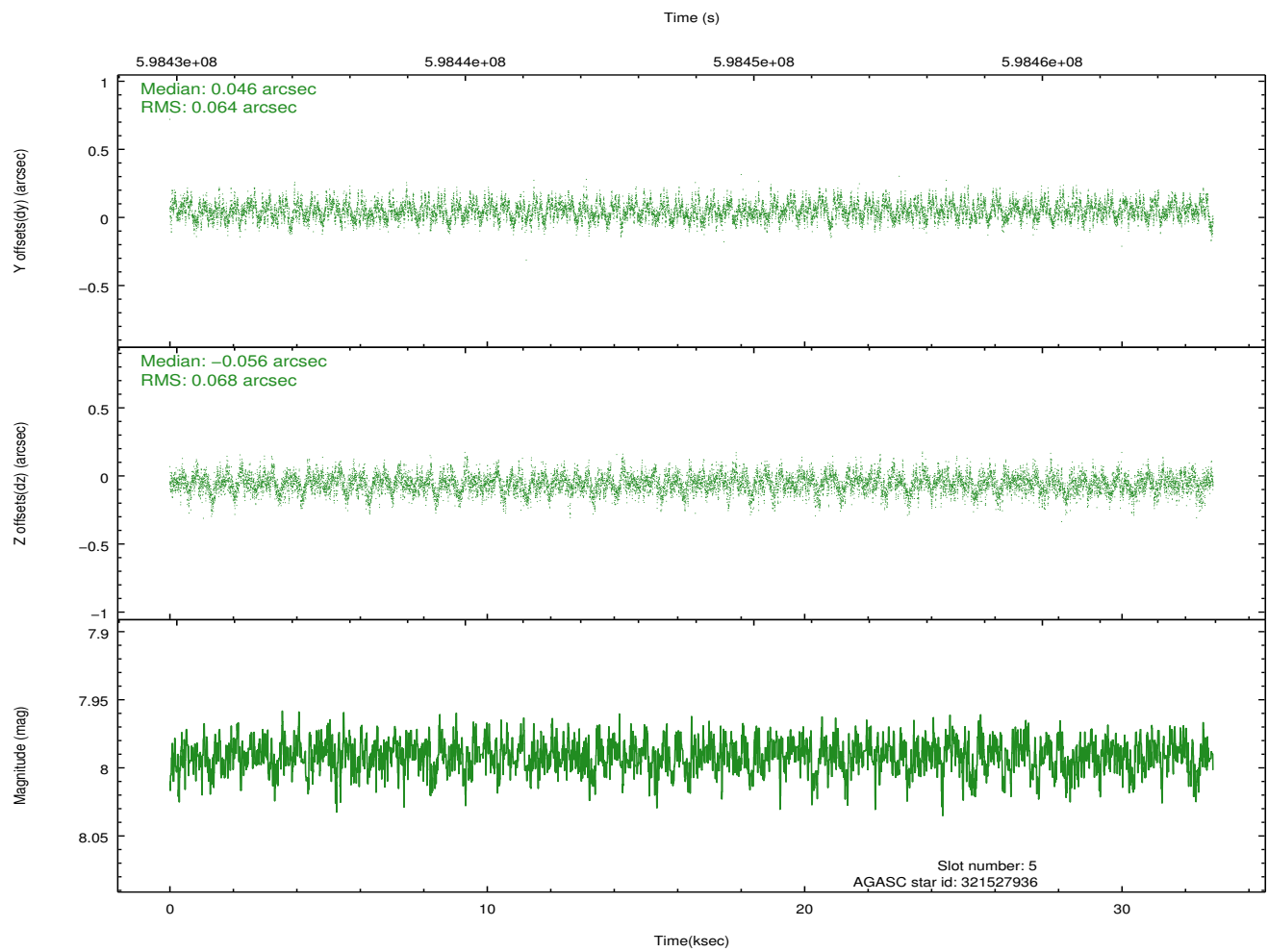
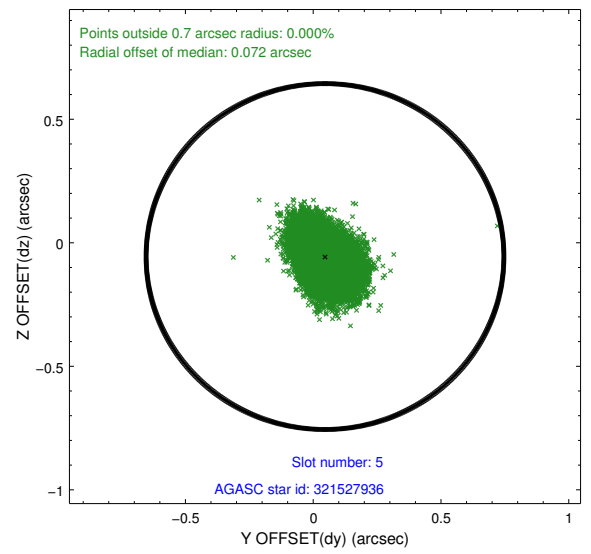
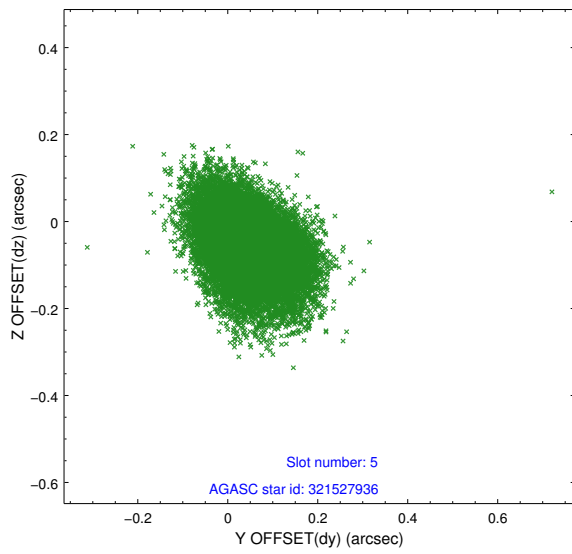
2.4.1 Slot 3



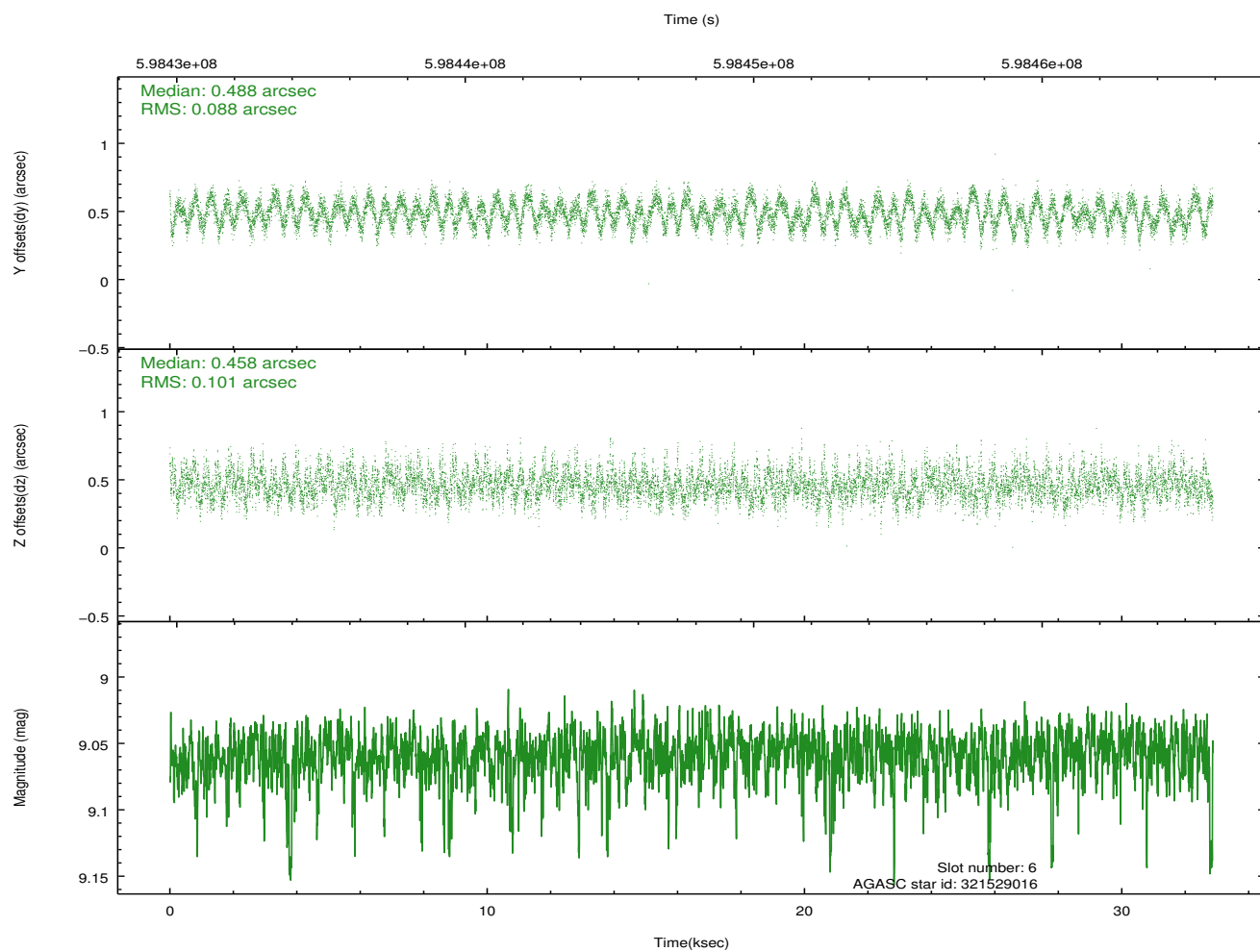
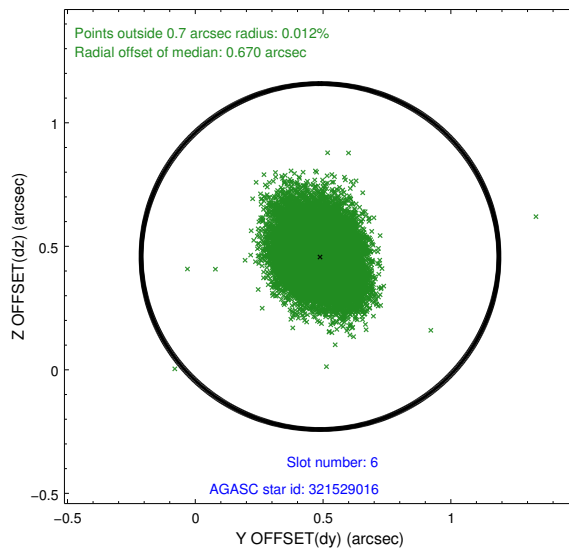
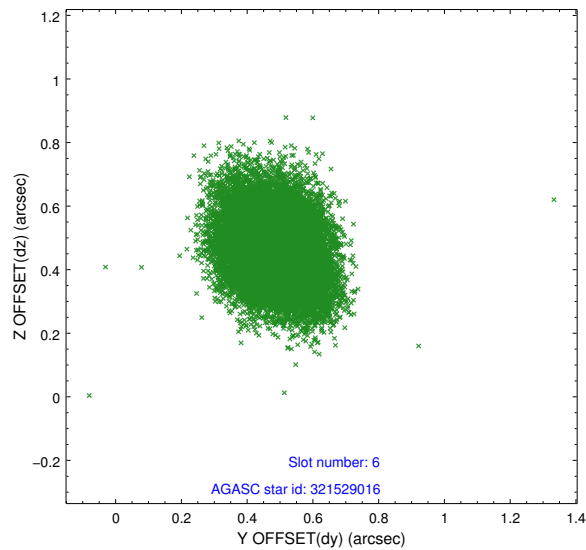
2.4.2 Slot 4



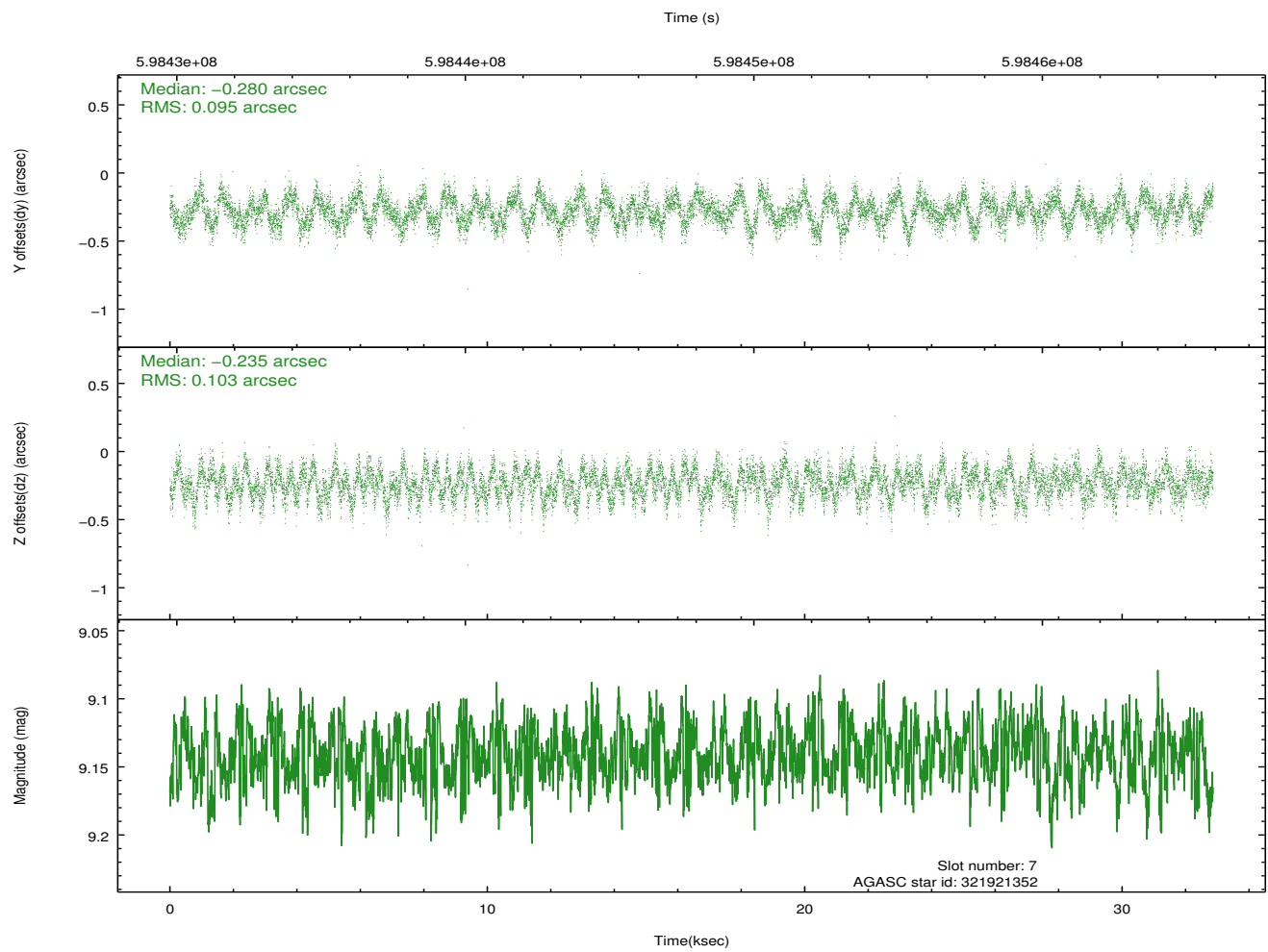
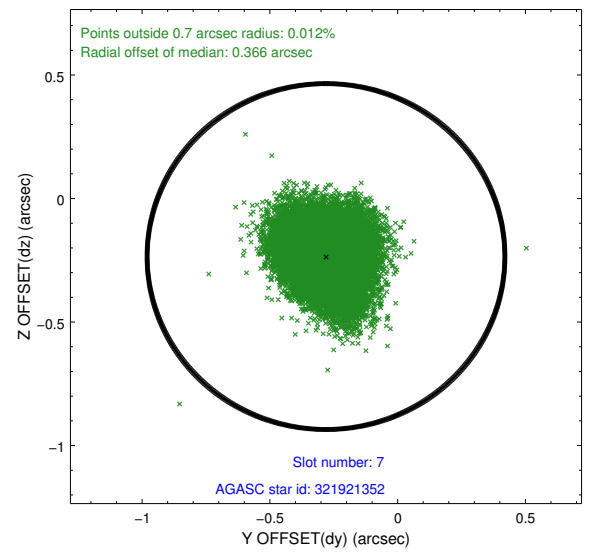
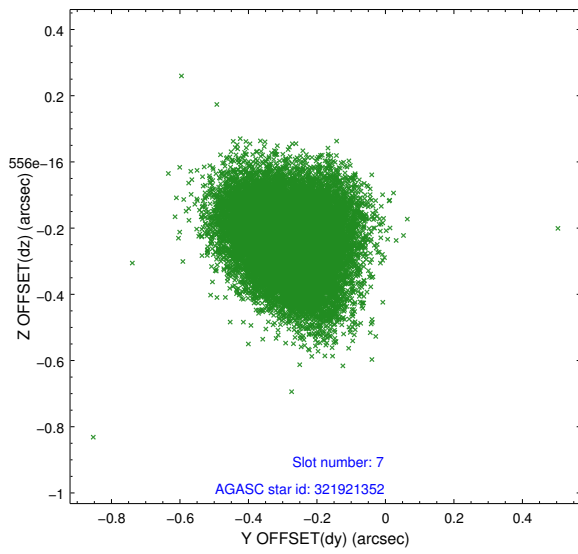
2.4.3 Slot 5



2.4.4 Slot 6

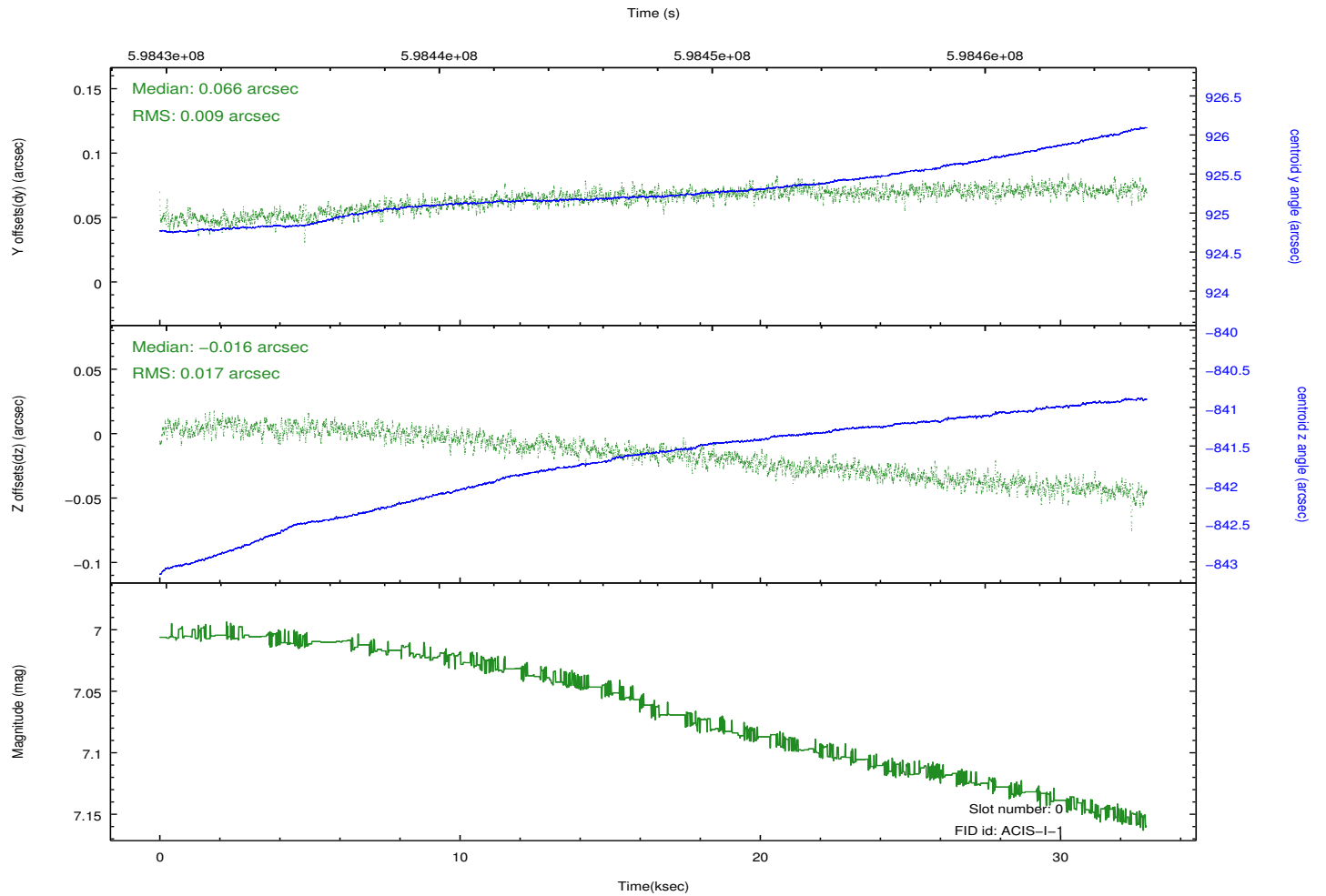
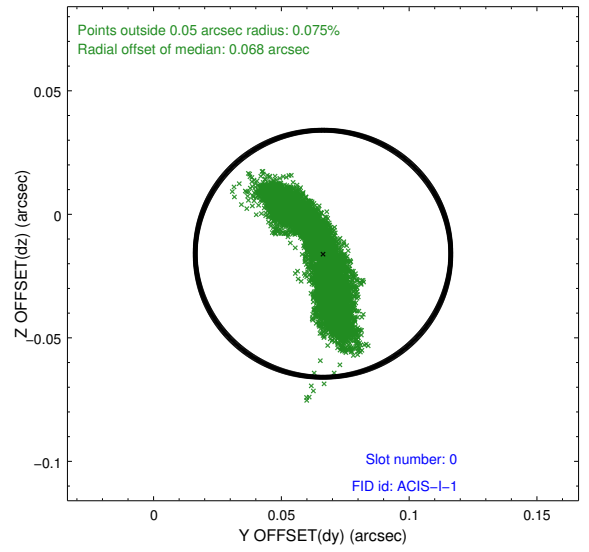
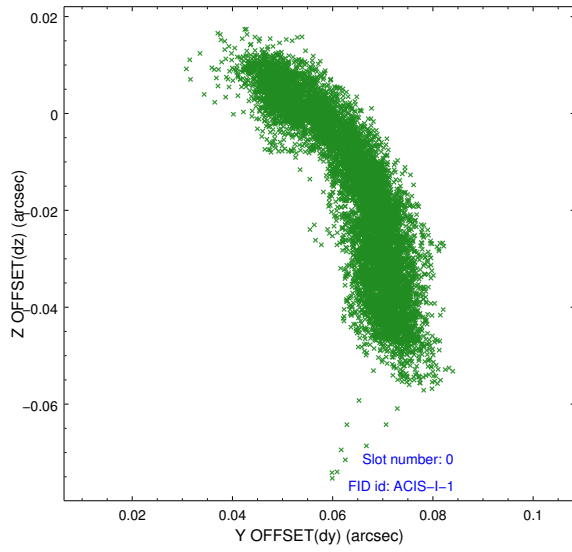


2.4.5 Slot 7

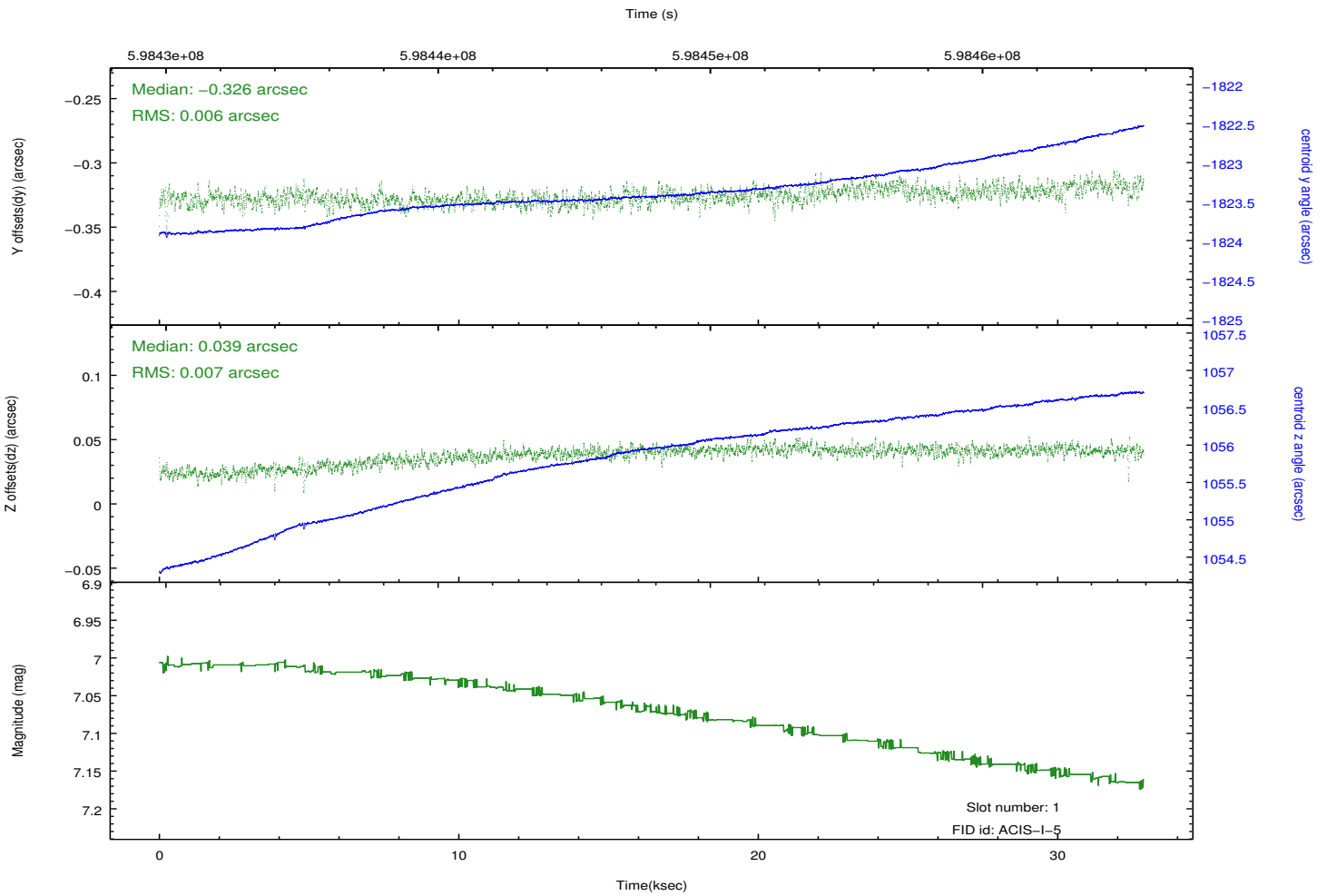
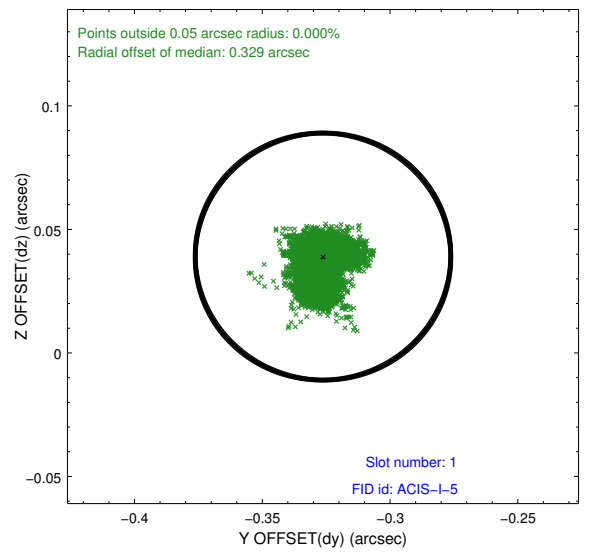
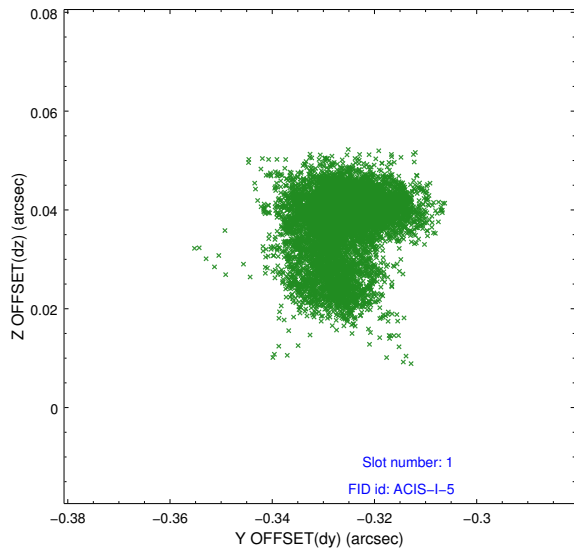


2.5 FID Slots

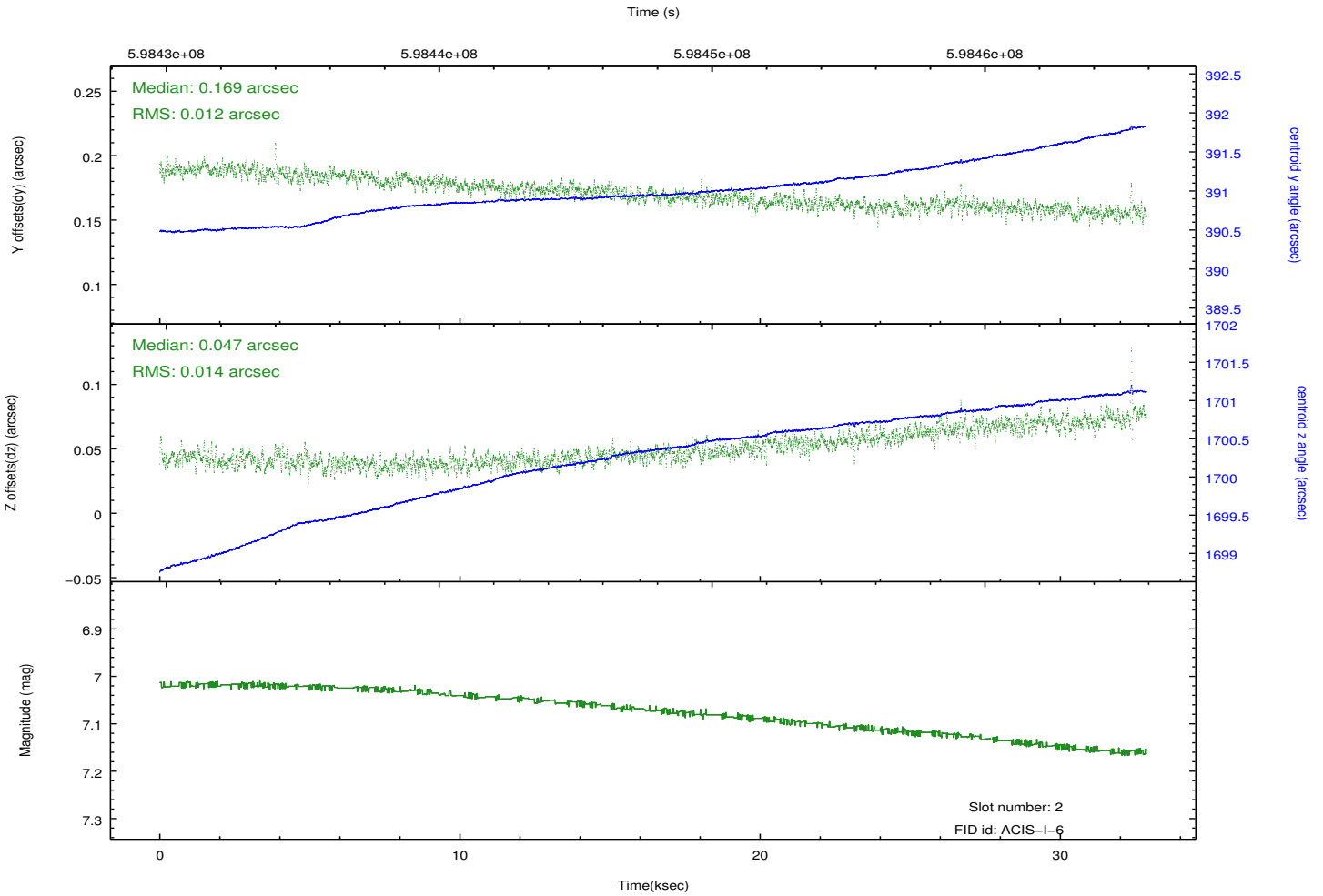
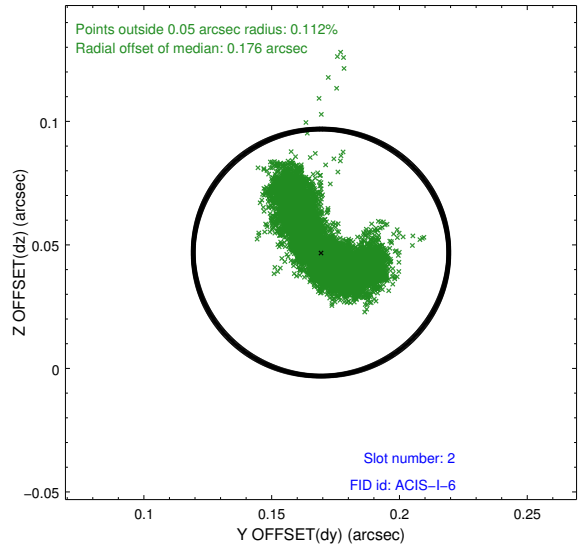
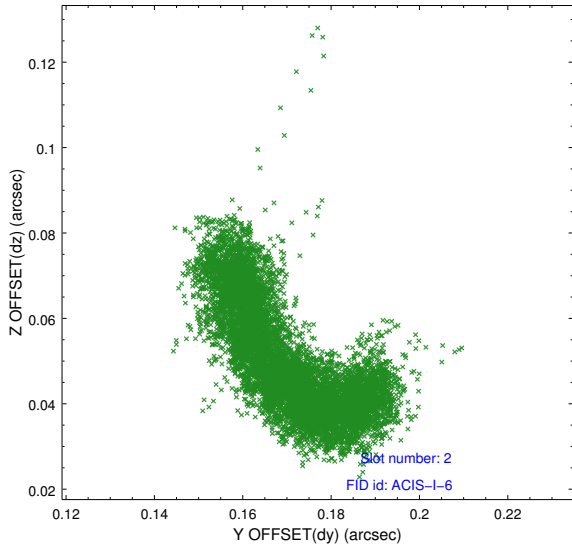
2.5.1 Slot 0



2.5.2 Slot 1



2.5.3 Slot 2



A Summary

A.1 Status

V&V Scientist	Jen Lauer
V&V Date (YYYY-MM-DD)	2016.12.19
V&V Edition	1
V&V Disposition and Status	OK
V&V Charge Time	32.063300246716

A.2 Comments

Optional chip S2 not included.