

V&V Reference Report

L2 ASCDS Version : 10.6

Observation 20002 - L2 Version 2
Chandra X-Ray Center

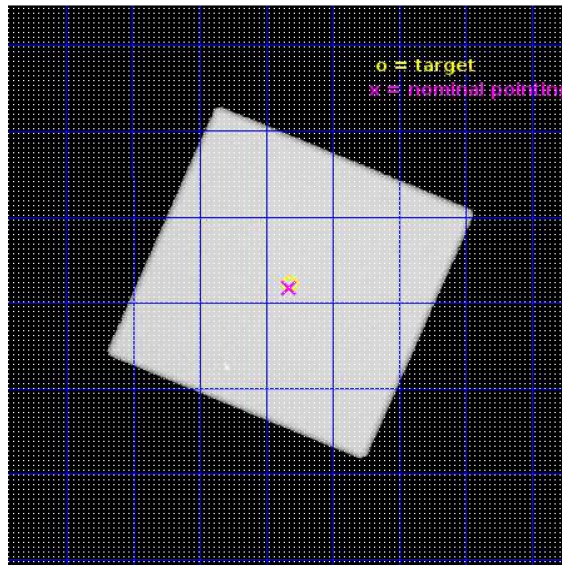
L2 Processing Date : Aug 8 2017

Contents

1	Front	2
2	OBI	3
2.1	OBI	3
2.1.1	Images	3
2.1.2	Parameters	4
2.1.3	Events	4
2.2	Compared Parameters	5
2.3	Aspect	6
2.4	Star Slots	9
2.4.1	Slot 3	9
2.4.2	Slot 5	10
2.4.3	Slot 6	11
2.4.4	Slot 7	12
2.5	FID Slots	13
2.5.1	Slot 0	13
2.5.2	Slot 1	14
2.5.3	Slot 2	15
A	Summary	16
A.1	Status	16
A.2	Comments	16

1 Front

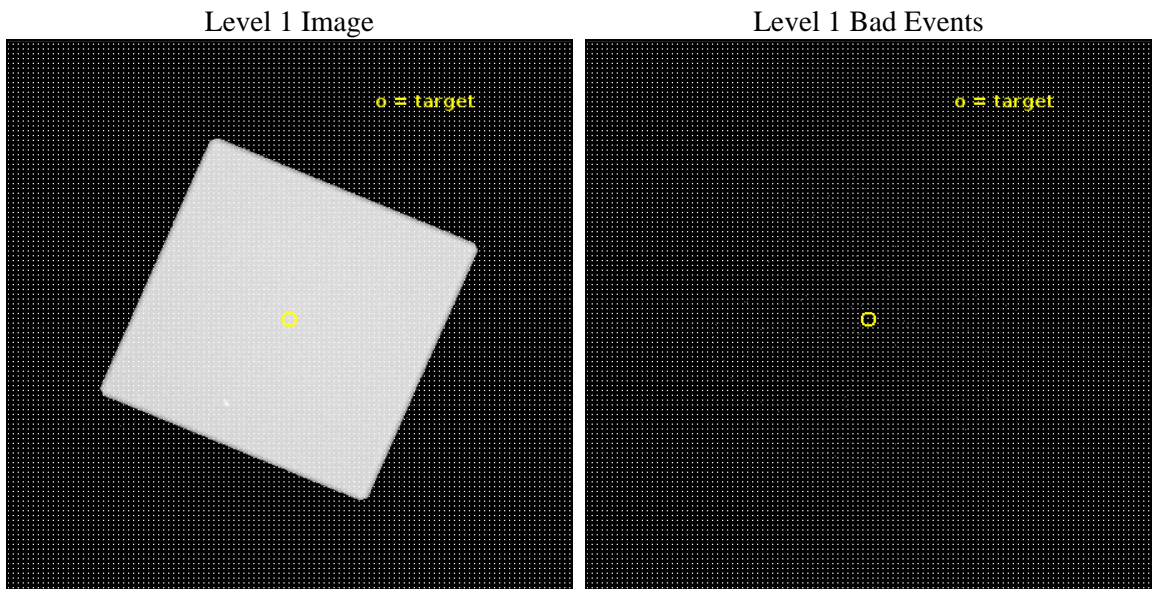
seq_num	100168	Sequence number
obs_id	20002	Observation id
title	Observing Jupiter's X-ray aurora during Juno apojove	Proposal tit
observer	Caitriona Jackman	Principal investigator
object	Jupiter	Source name
ra_targ	196.579237	Observer's specified target RA [deg]
dec_targ	-5.796472	Observer's specified target Dec [deg]
ra_nom	196.58070175175	Nominal RA [deg]
dec_nom	-5.8046715234877	Nominal Dec [deg]
roll_nom	248.126878679	Nominal Roll [deg]
revision	2	Processing version of data
ontime	36164.820862174	[s]
livetime	34975.025697892	Ontime multiplied by DTCOR
l2events	3959512	Number of level 2 events



2 OBI

2.1 OBI

2.1.1 Images



2.1.2 Parameters

obi_num	0	Obi number	sched_exp_time	36000.000000	[s] Scheduled observation exposure time
ascdsver	10.6	Processing system revision	ontime	36164.820862174	[s]
caldsver	4.7.5	 	l1events	5244654	Number of level 1 events
date	2017-08-08T13:44:24	Date and time of file creation			
revision	2	Processing version of data			

2.1.3 Events

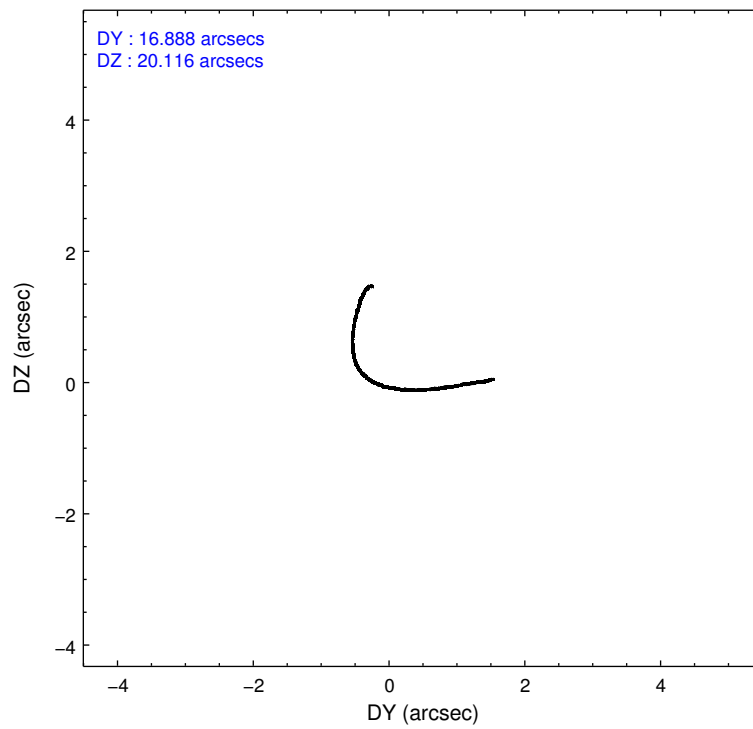
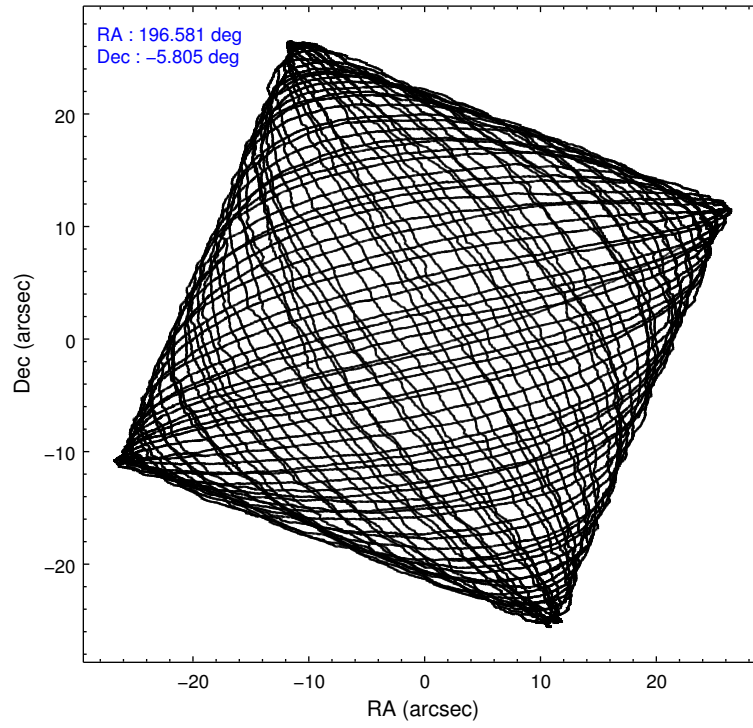
Level 1 Events

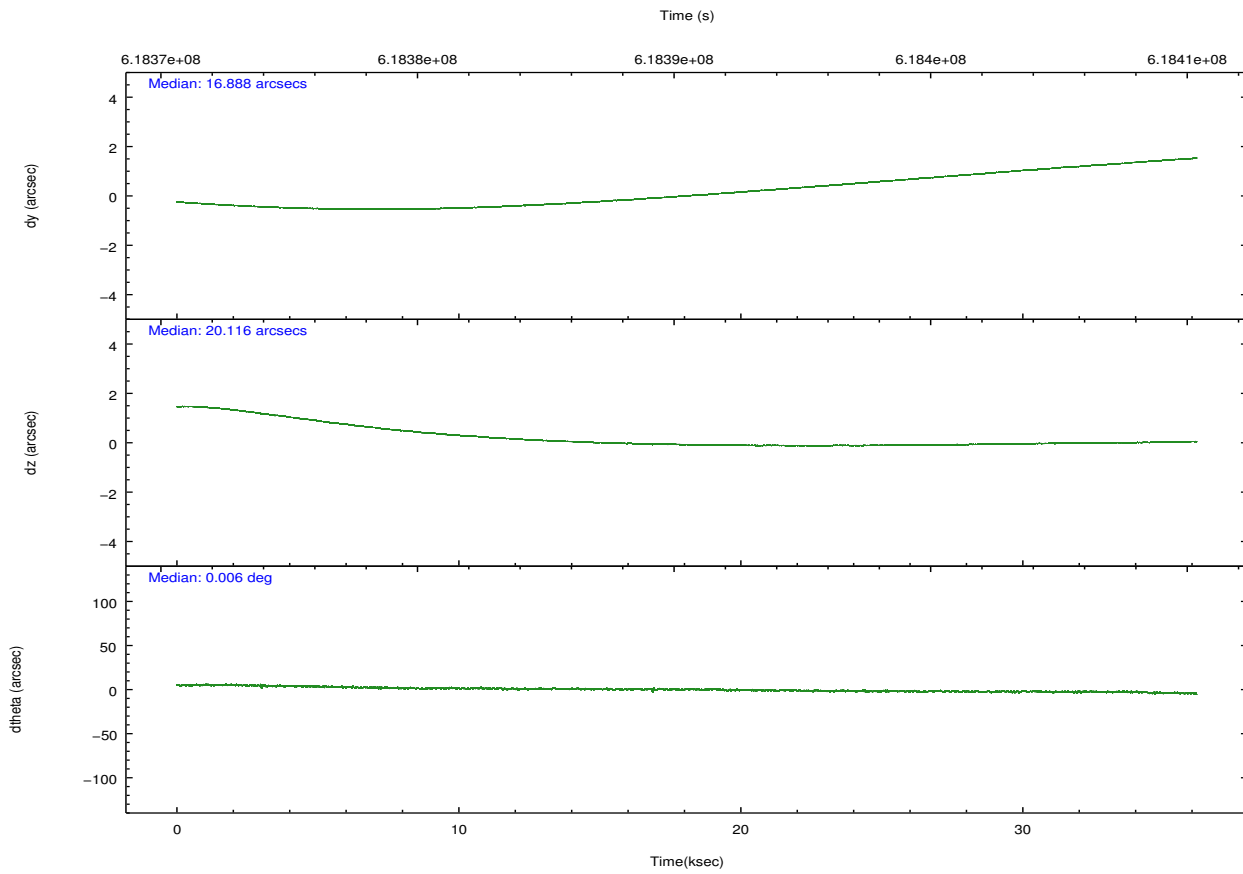
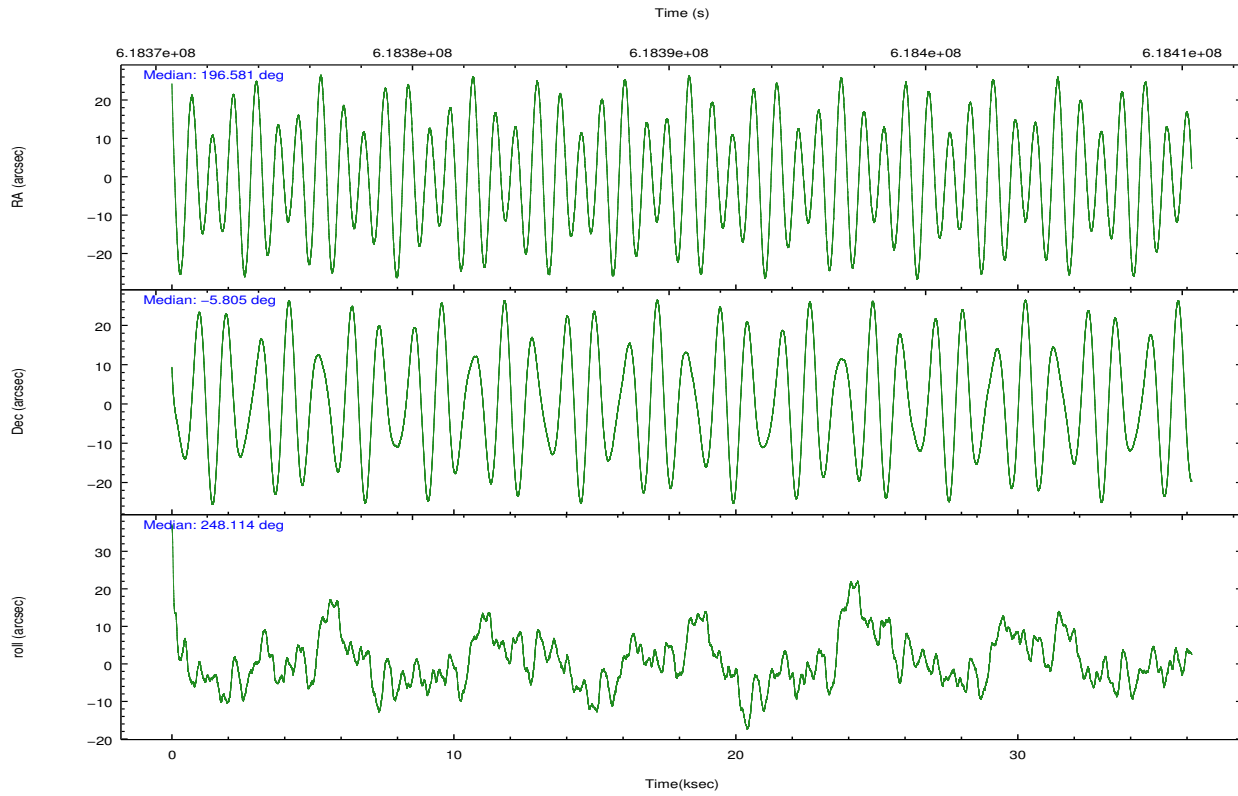
	segment 0
level 1 events	5244654
rejected events	79824
rejected %	1%

2.2 Compared Parameters

Parameter	Planned	Actual	Parameter	Planned	Actual
Instrument	HRC	HRC	Obspar format version number	7	7
Detector	HRC-I	HRC-I	Obspar file type	PREDICTED	ACTUAL
Grating	NONE	NONE	Obspar update status	NONE	UPDATED
Data mode	OBSERVING	OBSERVING			
Observation mode	POINTING	POINTING			
[deg] Pointing RA	196.576207	196.5807017517502			
[deg] Pointing Dec	-5.777718	-5.804671523487664			
[deg] Pointing Roll	248.221911	248.1268786790031			
[s] Window start time (MET)	617932869.184000	617932869.184000			
[s] Window stop time (MET)	618796869.184000	618796869.184000			
[mm] SIM focus pos	-1.040293	-1.038866356238299			
[mm] SIM defocus	0	0.001426264420575141			
[mm] SIM translation stage pos	126.985494	126.9829799899862			
[mm] SIM translation stage offset	0	0.002508901615314585			
[s] Observation start time (MET)	618372572.184000	618371817.32814			
Observation start date	2017-08-06T02:08:23	2017-08-06T01:56:57			
[s] Observation end time (MET)	618408572.184000	618409487.6178401			
Observation end date	2017-08-06T12:08:23	2017-08-06T12:24:47			

2.3 Aspect





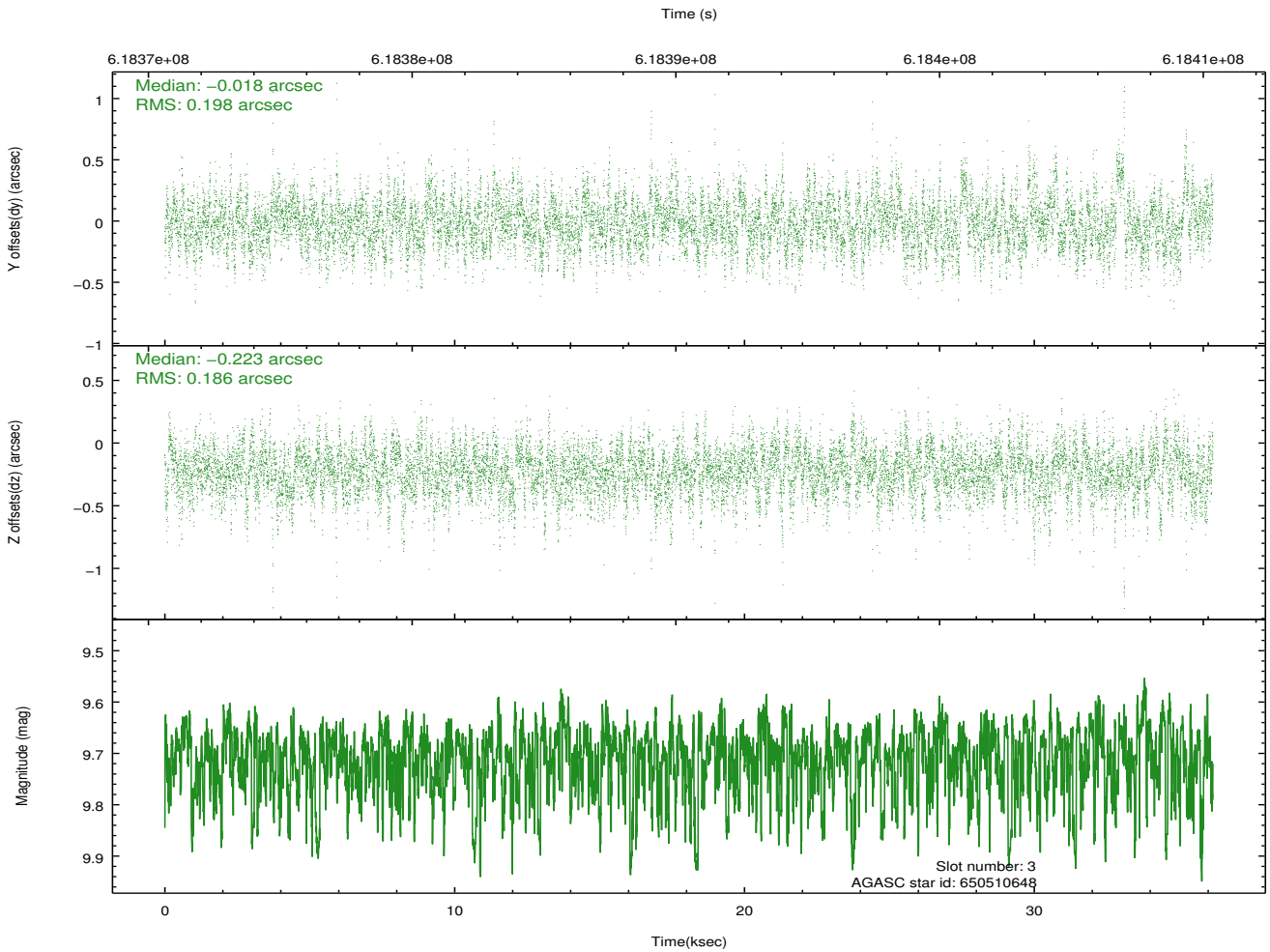
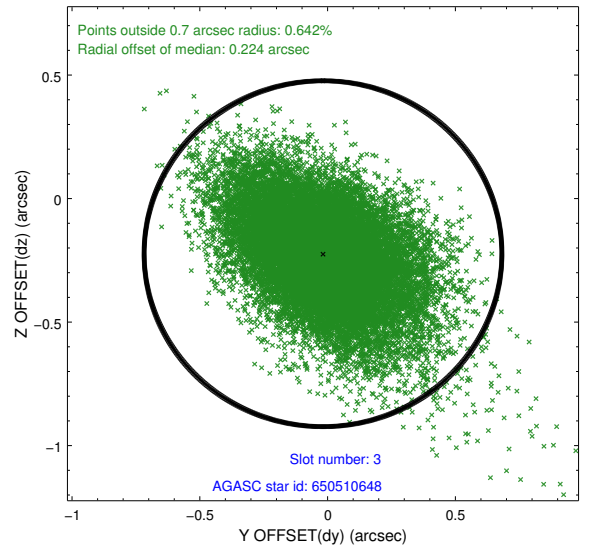
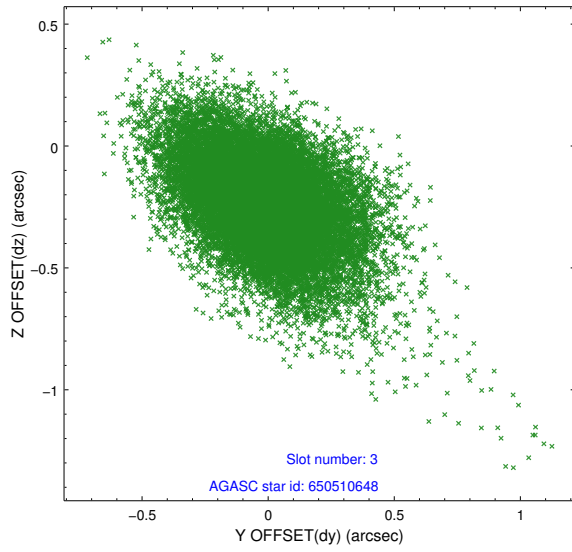
Slot Statistics

slot	status	used	id	mag	n_pts	med_dy	med_dz	dr1	dr2	ra	dec	mean_y	mean_z
0	FID		HRC-I-1	7.03	8820	-0.196	-0.000	0.010	0.027	0.000000	0.000000	-773.06	-1308.62
1	FID		HRC-I-2	7.05	8821	0.330	-0.098	0.015	0.037	0.000000	0.000000	840.01	-1310.36
2	FID		HRC-I-3	7.10	8821	-0.015	0.011	0.012	0.030	0.000000	0.000000	-1201.39	995.78
3	GUIDE	used	650510648	9.71	17595	-0.018	-0.223	0.275	0.482	195.798073	-6.121992	2187.44	-2128.10
4	OMITTED			0.00	0	0.000	0.000	0.000	0.000	0.000000	0.000000	0.00	0.00
5	GUIDE	used	650514024	9.24	17633	0.081	0.029	0.199	0.326	197.003819	-6.279182	1109.51	2091.13
6	GUIDE	used	650517336	7.88	17570	0.088	0.166	0.128	0.223	196.358568	-6.223536	1780.25	-127.07
7	GUIDE	used	650516808	8.77	17634	-0.151	0.034	0.174	0.293	197.205483	-5.995703	-105.67	2383.88

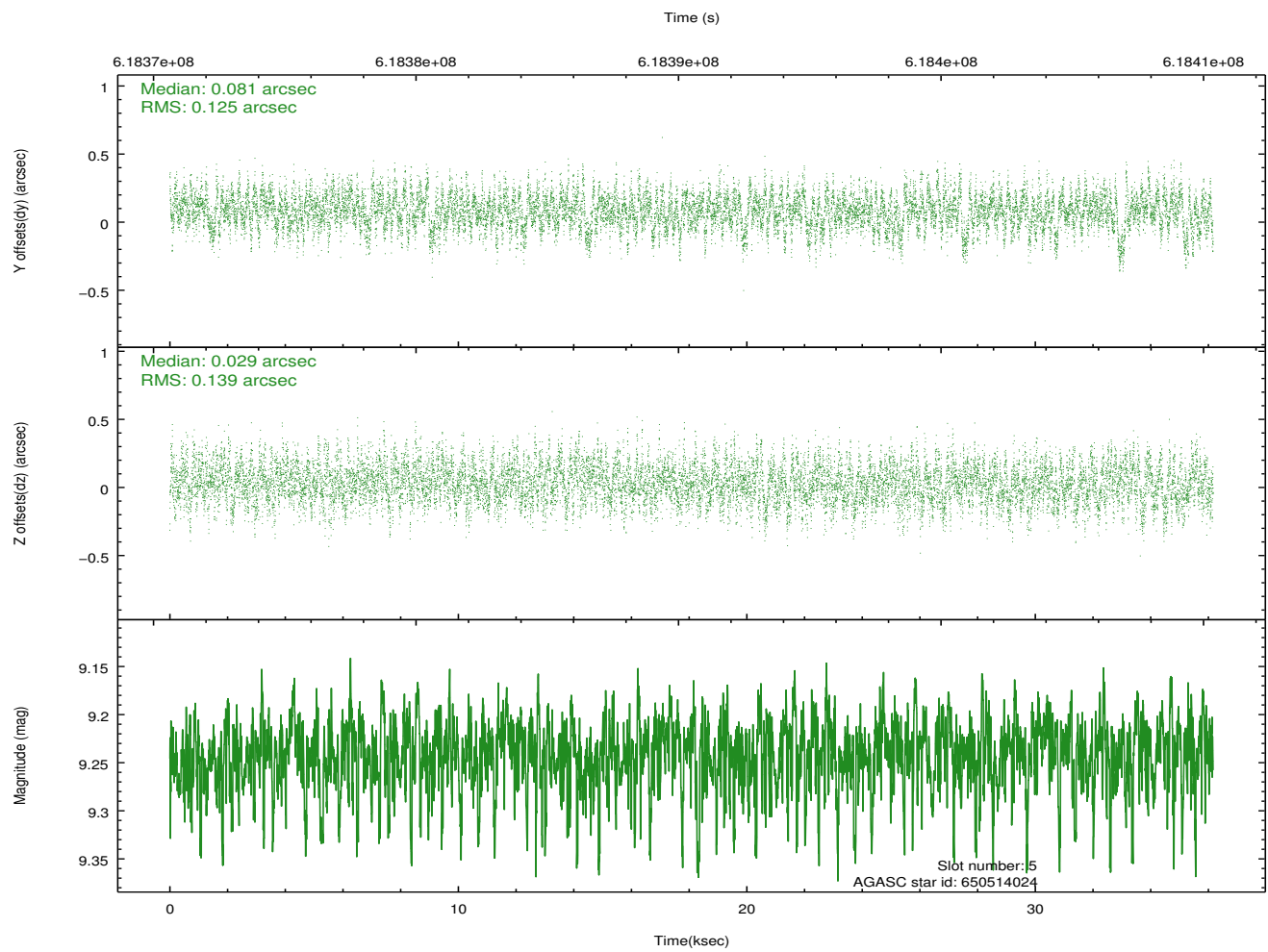
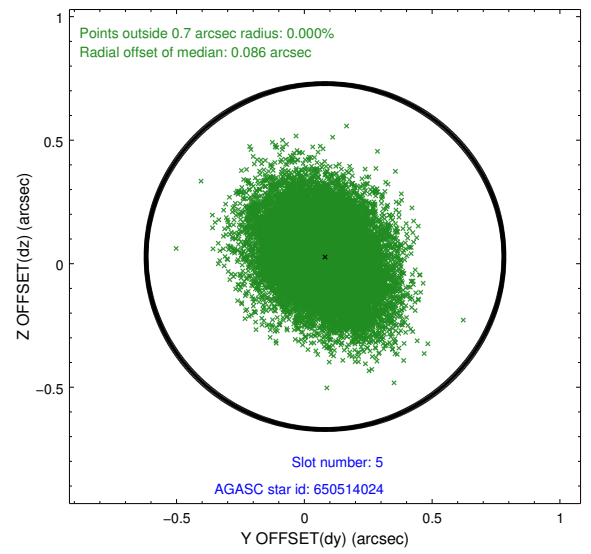
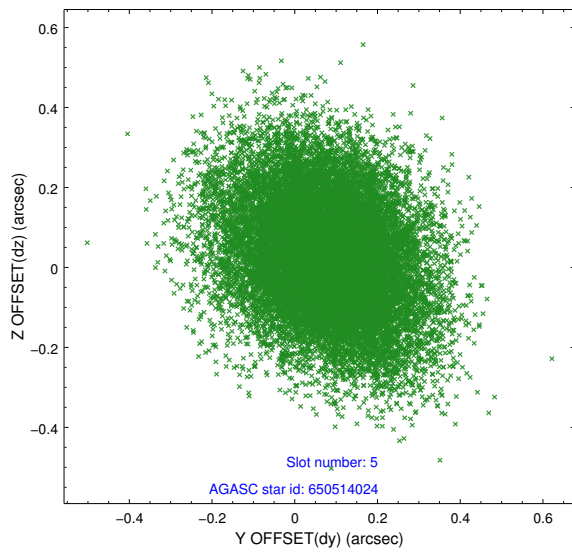
∞

2.4 Star Slots

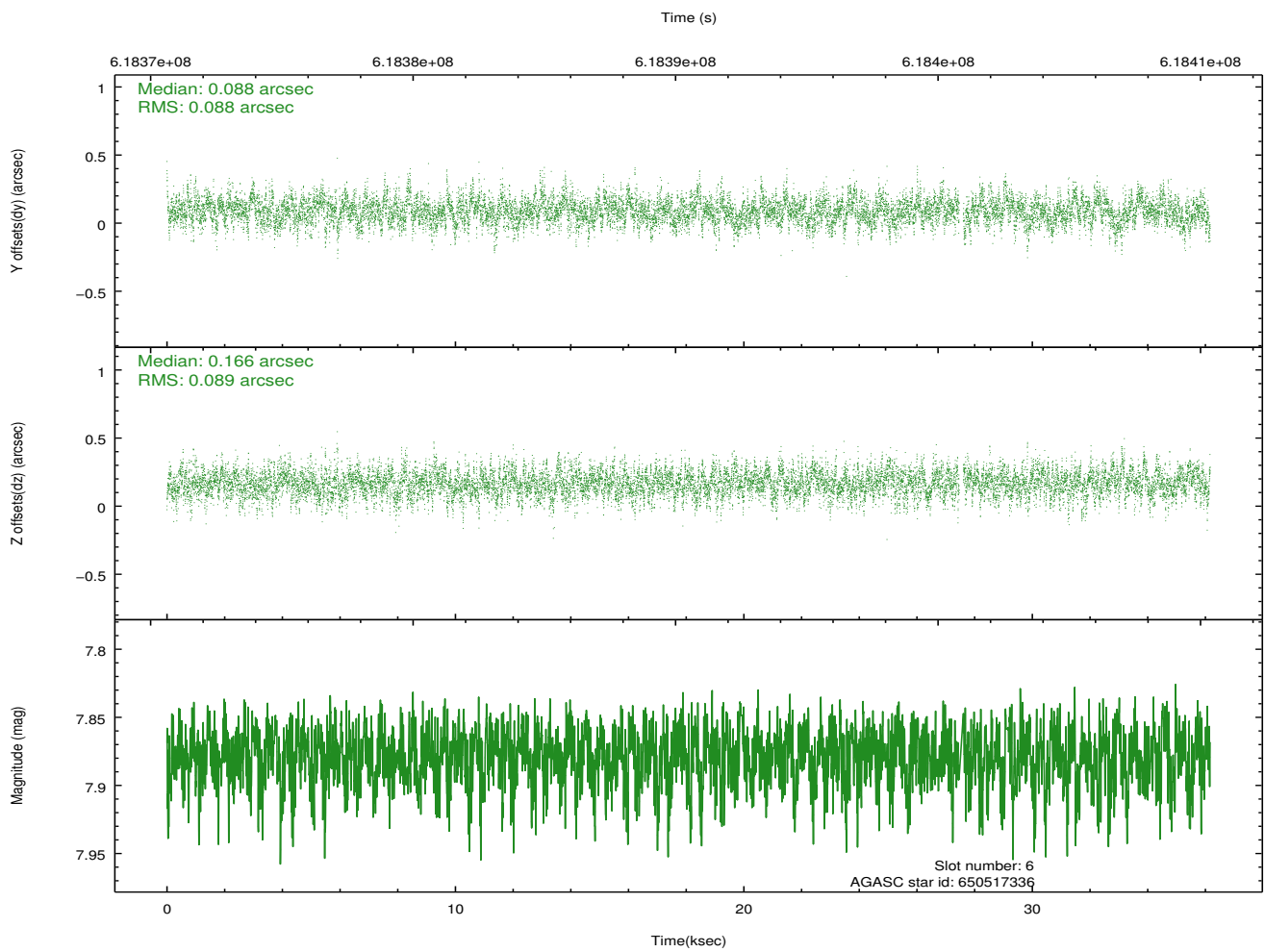
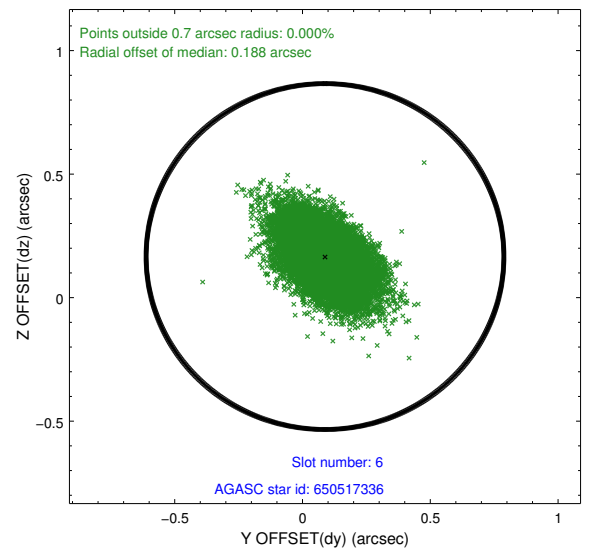
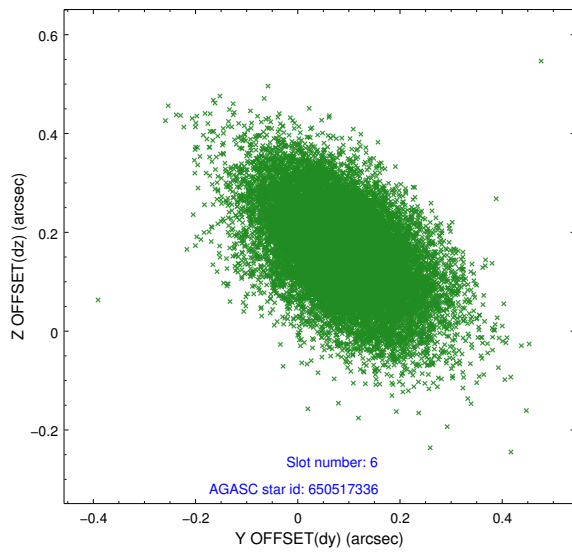
2.4.1 Slot 3



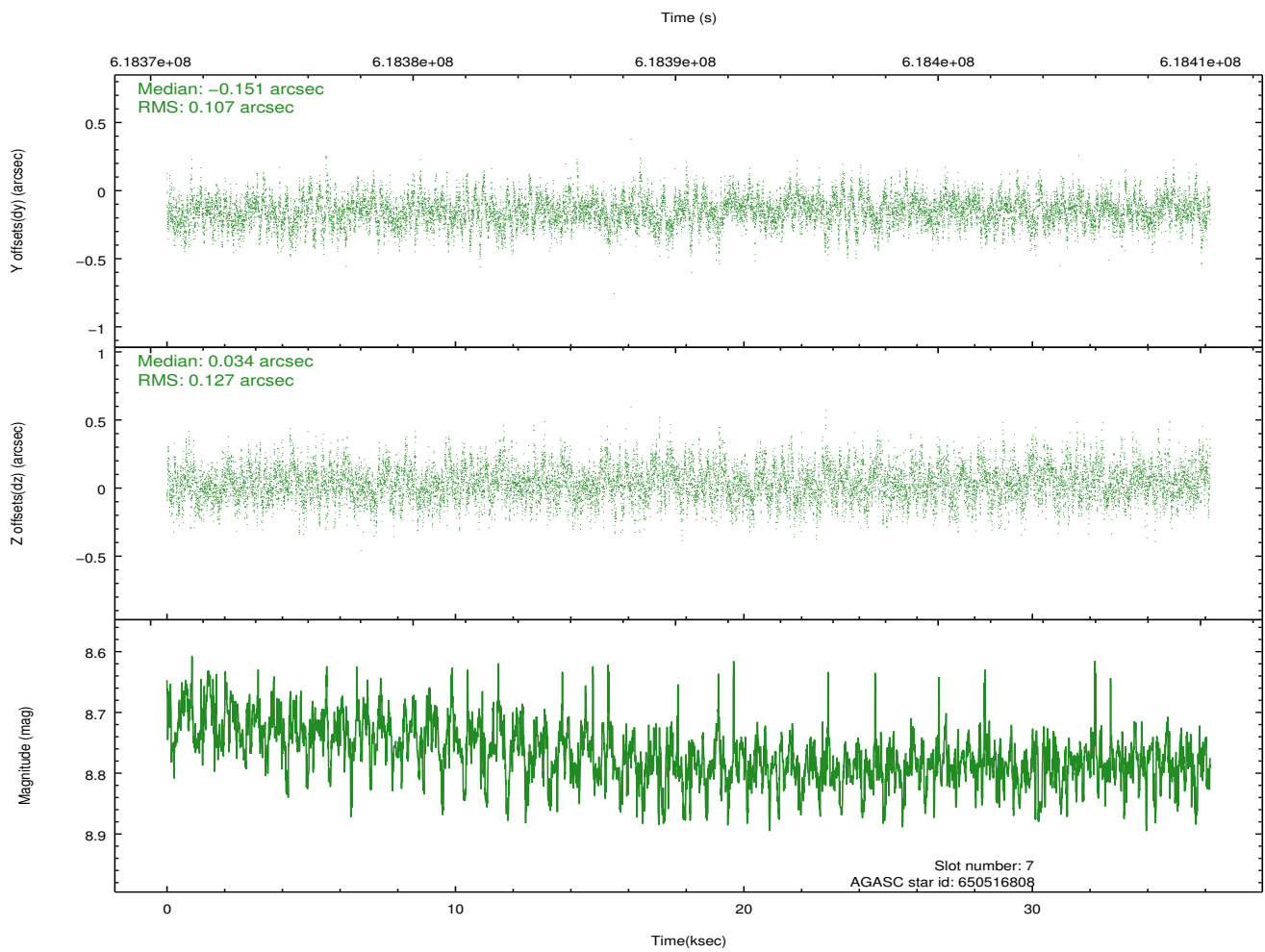
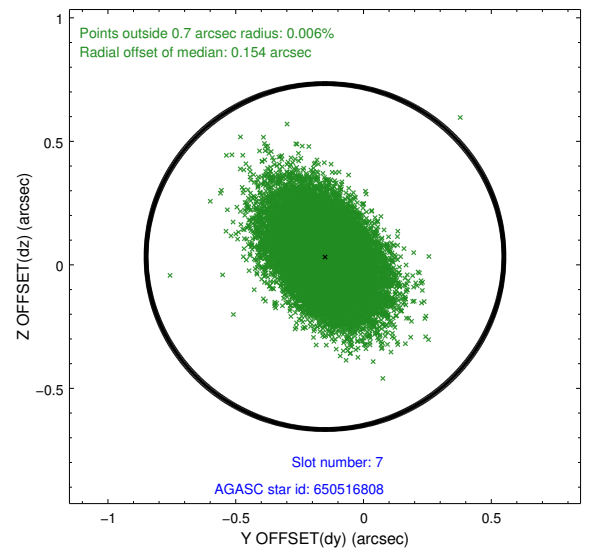
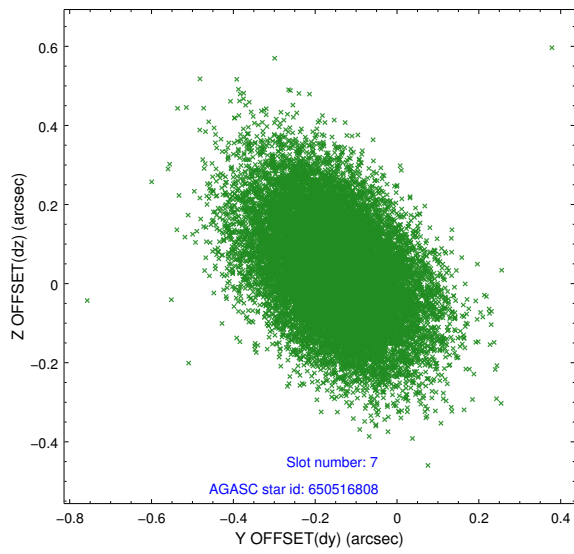
2.4.2 Slot 5



2.4.3 Slot 6

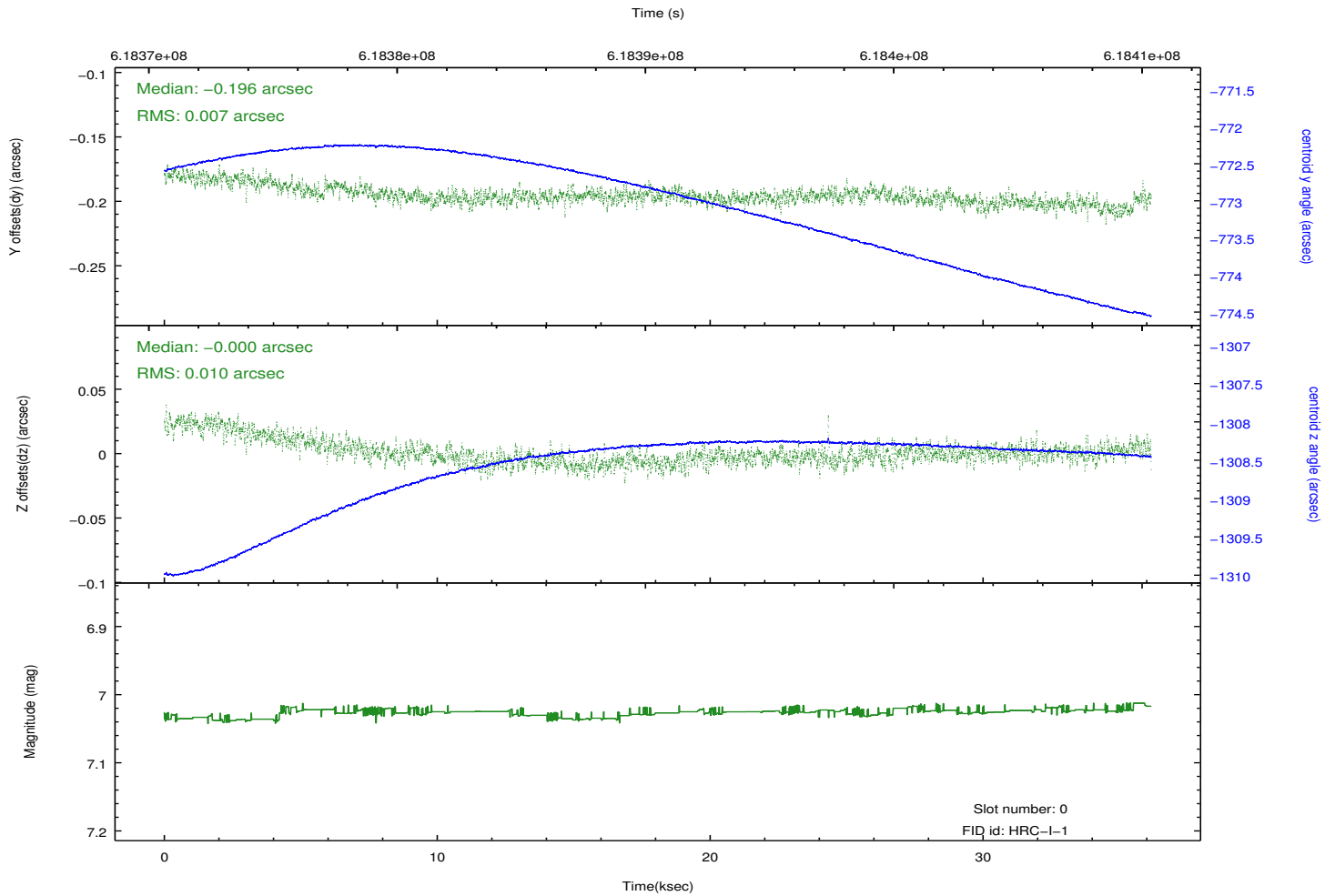
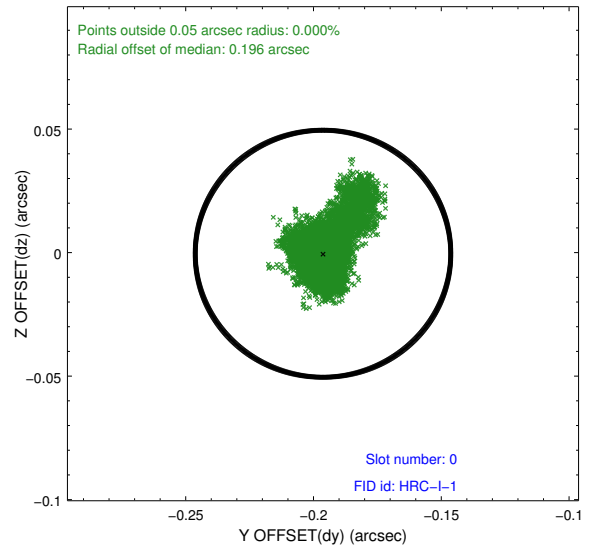
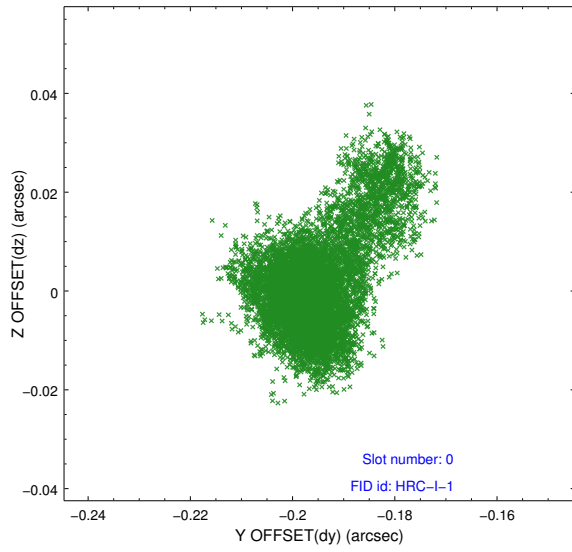


2.4.4 Slot 7

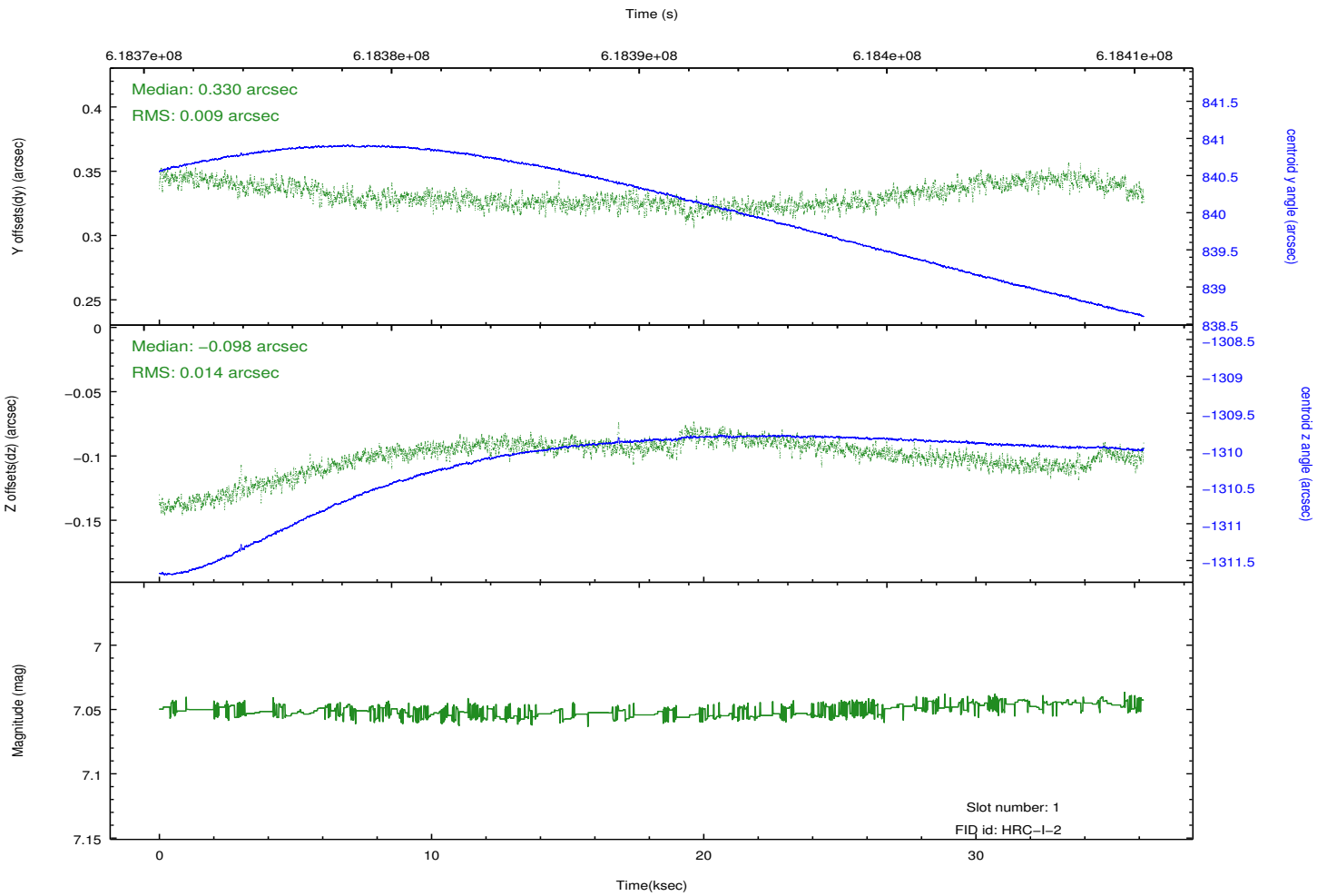
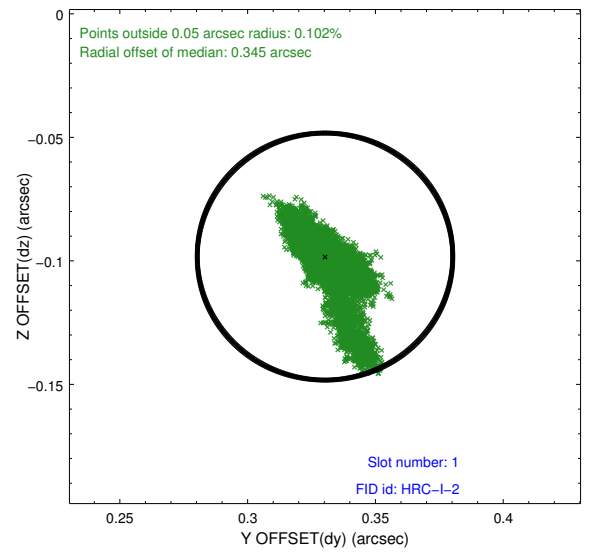
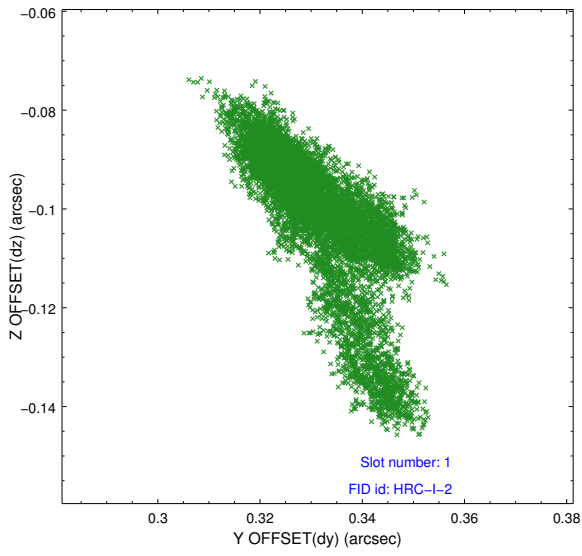


2.5 FID Slots

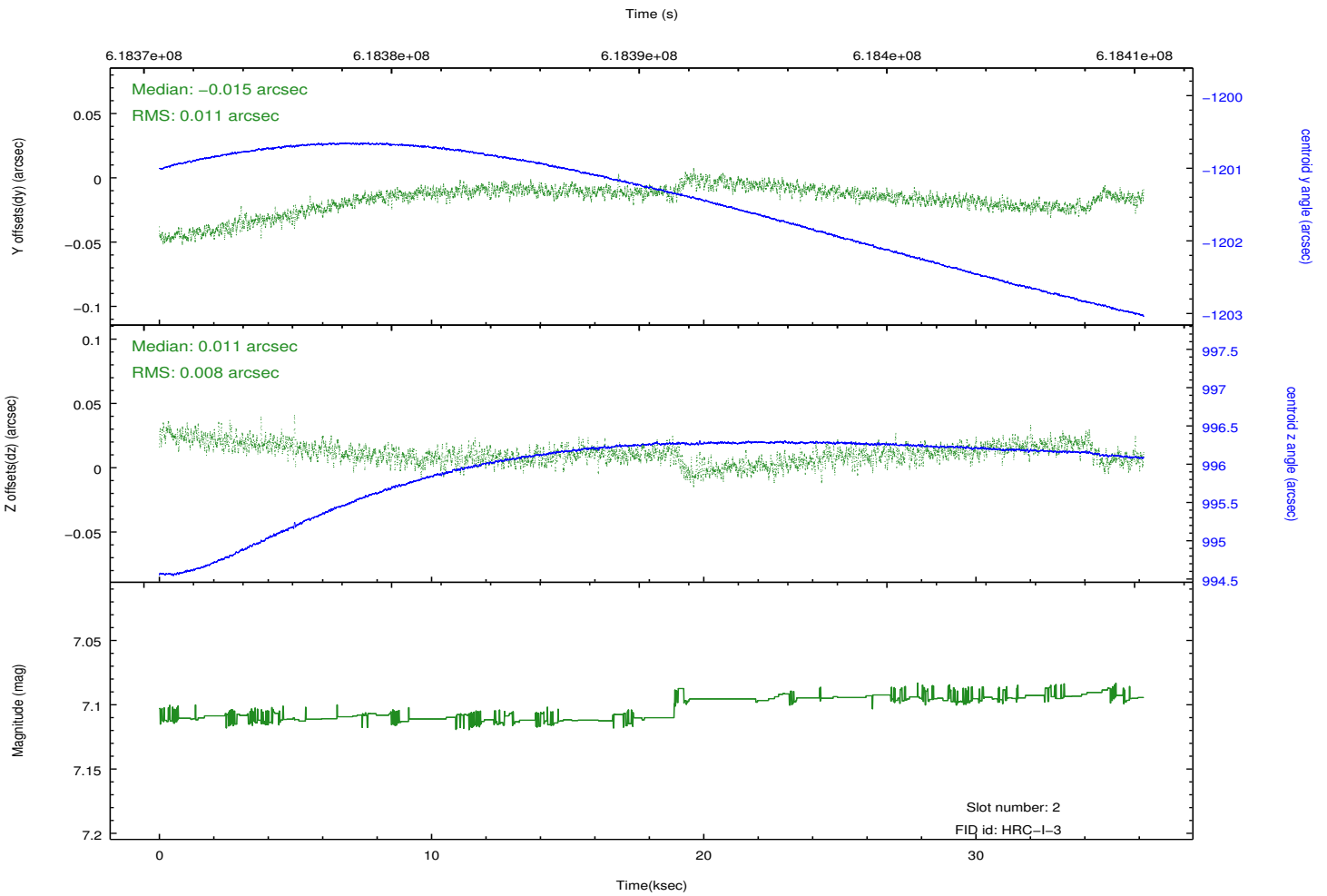
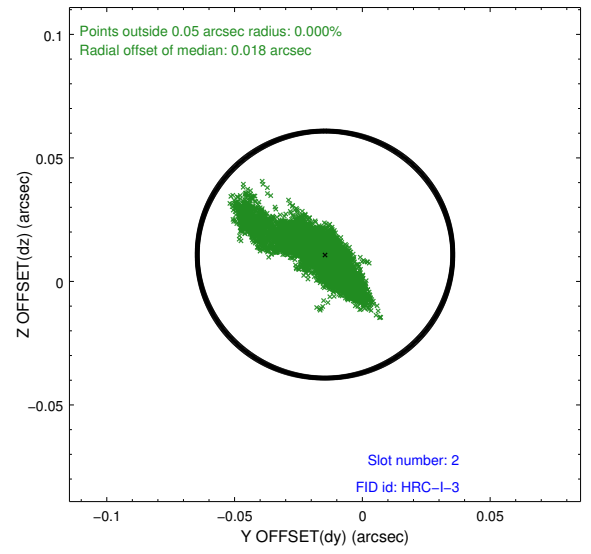
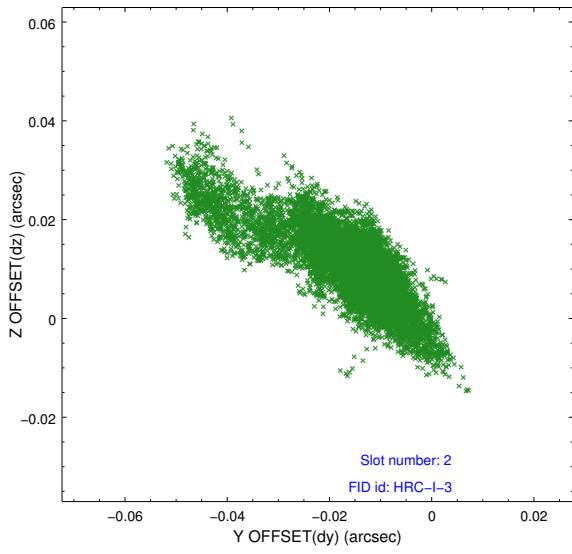
2.5.1 Slot 0



2.5.2 Slot 1



2.5.3 Slot 2



A Summary

A.1 Status

V&V Scientist	Beth Sundheim
V&V Date (YYYY-MM-DD)	2017.08.08
V&V Edition	1
V&V Disposition and Status	OK
V&V Charge Time	36.164820862174

A.2 Comments

Window preference met.

The guide star in slot 4 was removed from the aspect solution due to poor data quality. The aspect solution is improved by the removal of this slot from the solution.

This is an observation of a moving target. Users will need to run `sso_freeze` or similar software to position the events in the reference frame of the target.