

V&V Reference Report

L2 ASCDS Version : 10.5.1.1

Observation 19476 - L2 Version 1
Chandra X-Ray Center

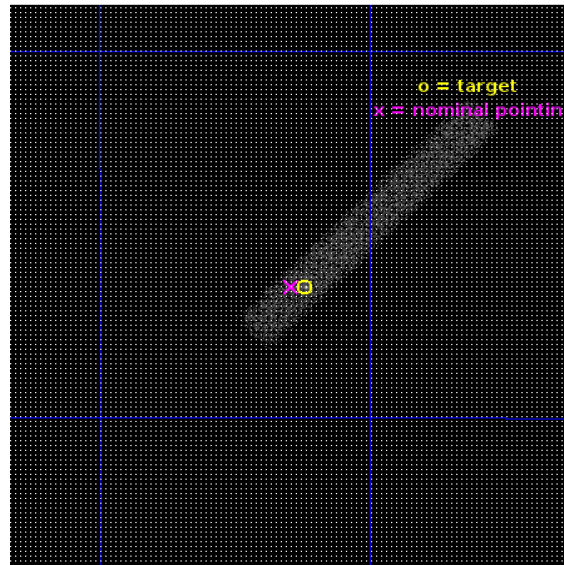
L2 Processing Date : Sep 20 2016

Contents

1	Front	2
2	OBI	3
2.1	OBI	3
2.1.1	Images	3
2.1.2	Bias	3
2.1.3	Parameters	4
2.1.4	Events	4
2.2	Compared Parameters	5
2.3	Aspect	6
2.4	Star Slots	9
2.4.1	Slot 3	9
2.4.2	Slot 4	10
2.4.3	Slot 5	11
2.4.4	Slot 6	12
2.4.5	Slot 7	13
2.5	FID Slots	14
2.5.1	Slot 0	14
2.5.2	Slot 1	15
2.5.3	Slot 2	16
A	Summary	17
A.1	Status	17
A.2	Comments	17

1 Front

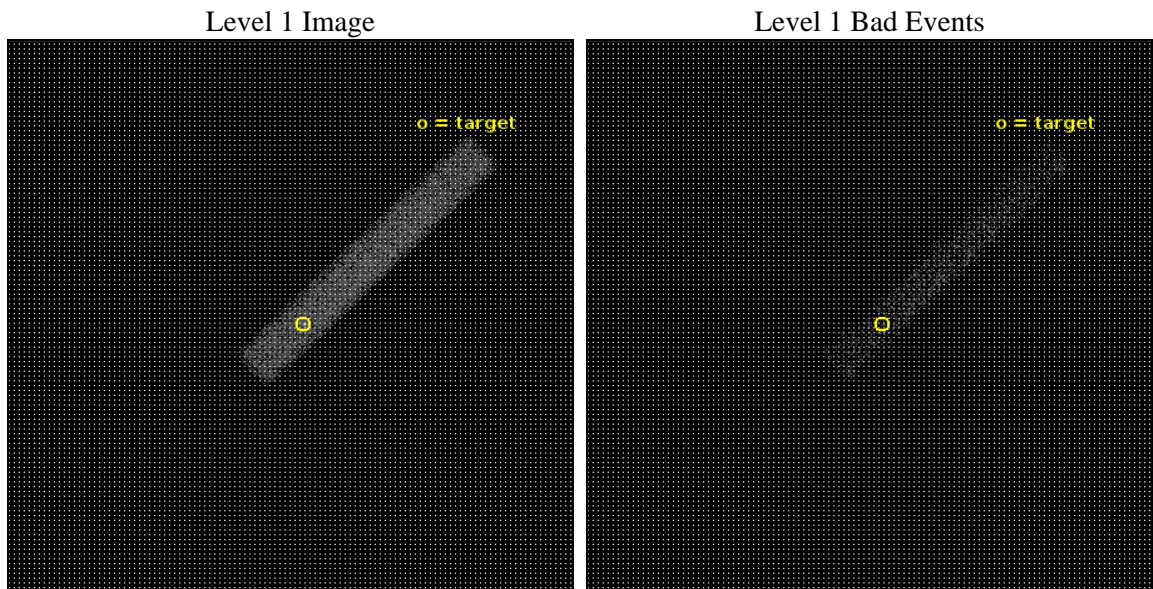
seq_num	703324	Sequence number
obs_id	19476	Observation id
title	The impact of the starburst and AGN activity in the LIRG: MCG -03-58-007	Proposal title
observer	Valentina Braitto	Principal investigator
object	MCG-03-58-007	Source name
dtycle	0	
cycle	P	events from which exps? Prim/Second/Both
ra_targ	342.405	Observer's specified target RA [deg]
dec_targ	-19.274	Observer's specified target Dec [deg]
ra_nom	342.41142462207	Nominal RA [deg]
dec_nom	-19.273786369942	Nominal Dec [deg]
roll_nom	315.15876102283	Nominal Roll [deg]
revision	1	Processing version of data
ontime	17069.533269644	Sum of GTIs [s]
lvetime	15481.165671725	Livetime [s]
ontime7	17069.533269644	Sum of GTIs [s]
l2events	11291	Number of level 2 events



2 OBI

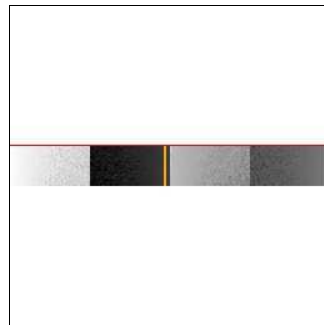
2.1 OBI

2.1.1 Images



2.1.2 Bias

Chip 7



2.1.3 Parameters

obi_num	0	Obi number	sched_exp_time	17000.000000	[s] Scheduled observation exposure time
ascdsver	10.5.1.1	Processing system revision	ontime	17069.533269644	Sum of GTIs [s]
caldbver	4.7.2	 	ontime7	17069.533269644	Sum of GTIs [s]
date	2016-09-21T02:10:18	Date and time of file creation	l1events	21416	Number of level 1 events
revision	1	Processing version of data			

2.1.4 Events

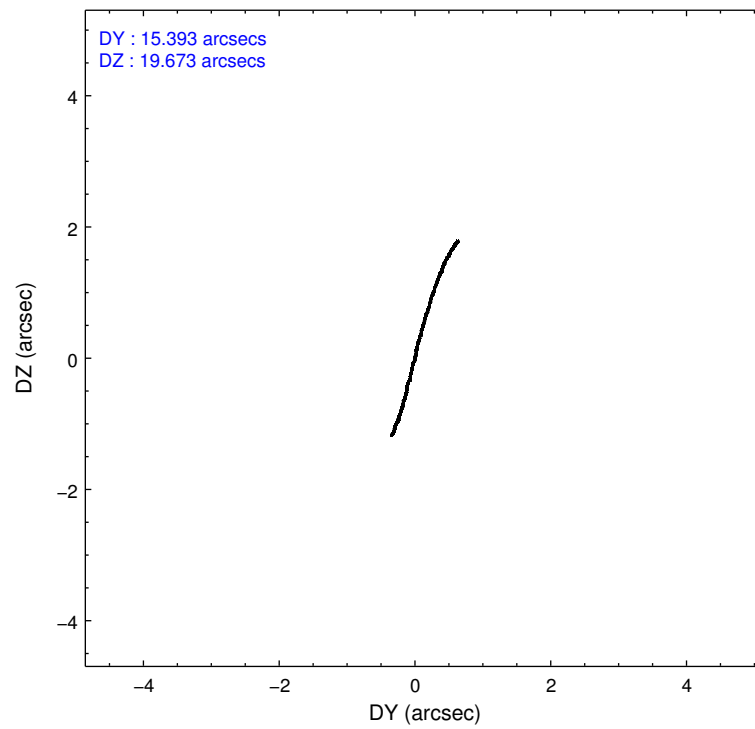
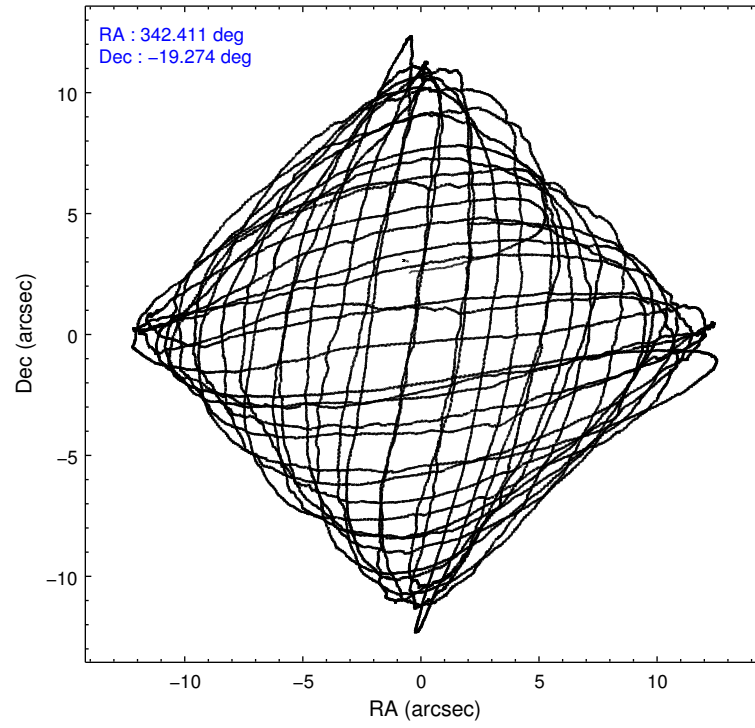
	ccd 7
level 1 events	21416
rejected events	9713
rejected %	45%

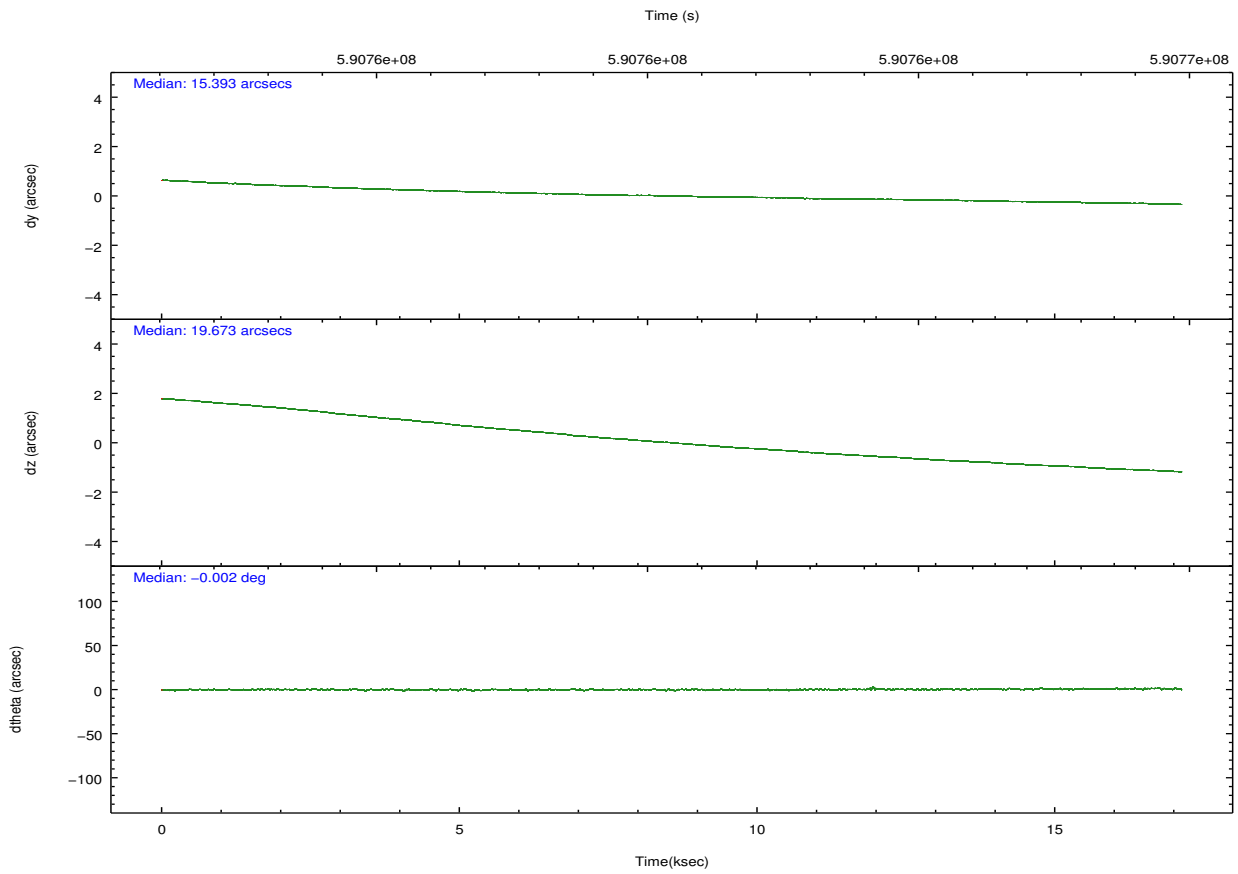
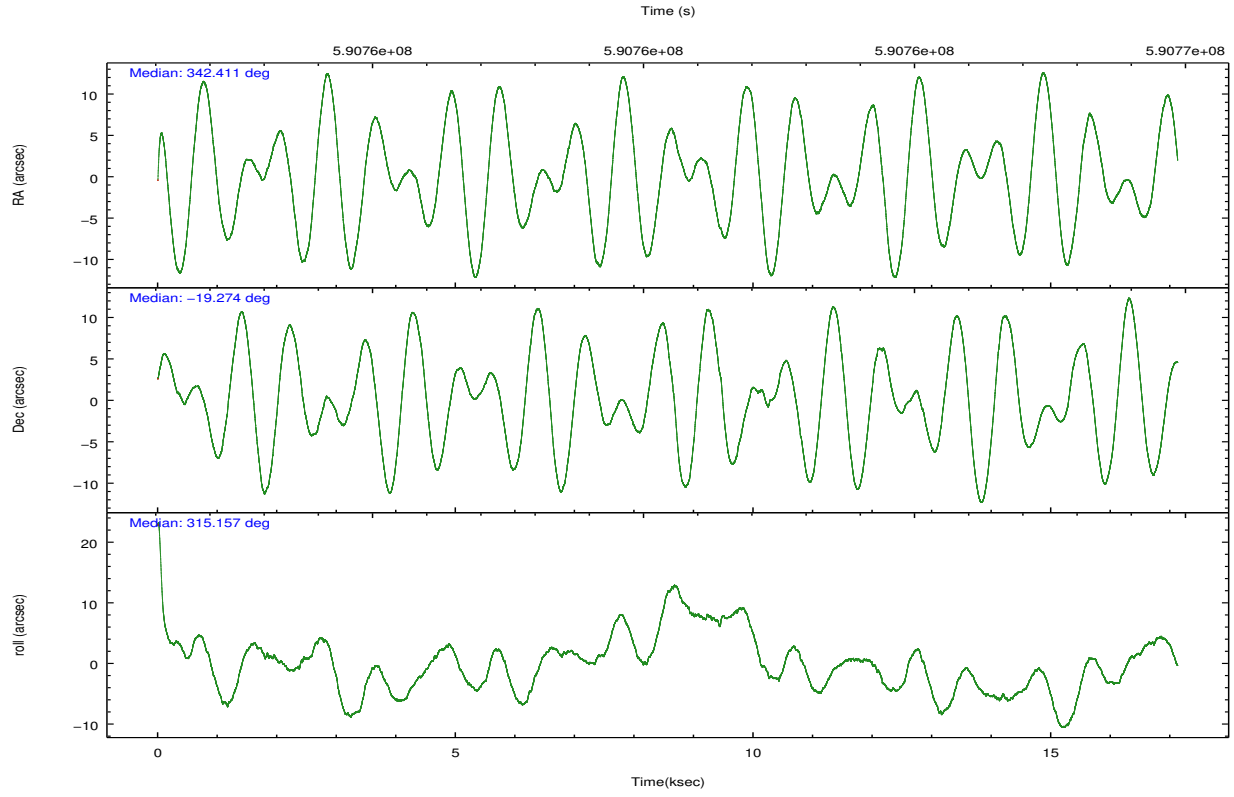
	ccd 7
grade 0 events	1460
	6%
grade 1 events	38
	0%
grade 2 events	2440
	11%
grade 3 events	1527
	7%
grade 4 events	1450
	6%
grade 5 events	1999
	9%
grade 6 events	4826
	22%
grade 7 events	7676
	35%

2.2 Compared Parameters

Parameter	Planned	Actual	Parameter	Planned	Actual
Instrument	ACIS	ACIS	Obspar format version number	7	7
Detector	ACIS-7	ACIS-7	Obspar file type	PREDICTED	ACTUAL
Grating	NONE	NONE	Obspar update status	NONE	UPDATED
Data mode	VFAINT	VFAINT	Number of optional ACIS chips dropped	0	0
Observation mode	POINTING	POINTING	On-chip summing requested	N	N
[deg] Pointing RA	342.383204	342.4114246220669	Subarray requested	CUSTOM	1/8
[deg] Pointing Dec	-19.267120	-19.27378636994169	Subarray start row	449	449
[deg] Pointing Roll	314.992805	315.1587610228275	Subarray row count	128	128
[mm] SIM focus pos	-0.684267	-0.6828225247311905	Alternating exposures requested	N	N
[mm] SIM defocus	0	0.001444936568705701	[s] Primary exposure time	0.000000	0.4
[mm] SIM translation stage pos	-190.132523	-190.1425803651734			
[mm] SIM translation stage offset	0	0.01005778216563158			
[s] Observation start time (MET)	590752005.184000	590750695.36426			
Observation start date	2016-09-20T09:45:37	2016-09-20T09:24:55			
[s] Observation end time (MET)	590769005.184000	590770184.71538			
Observation end date	2016-09-20T14:28:57	2016-09-20T14:49:44			
Read mode	TIMED	TIMED			

2.3 Aspect





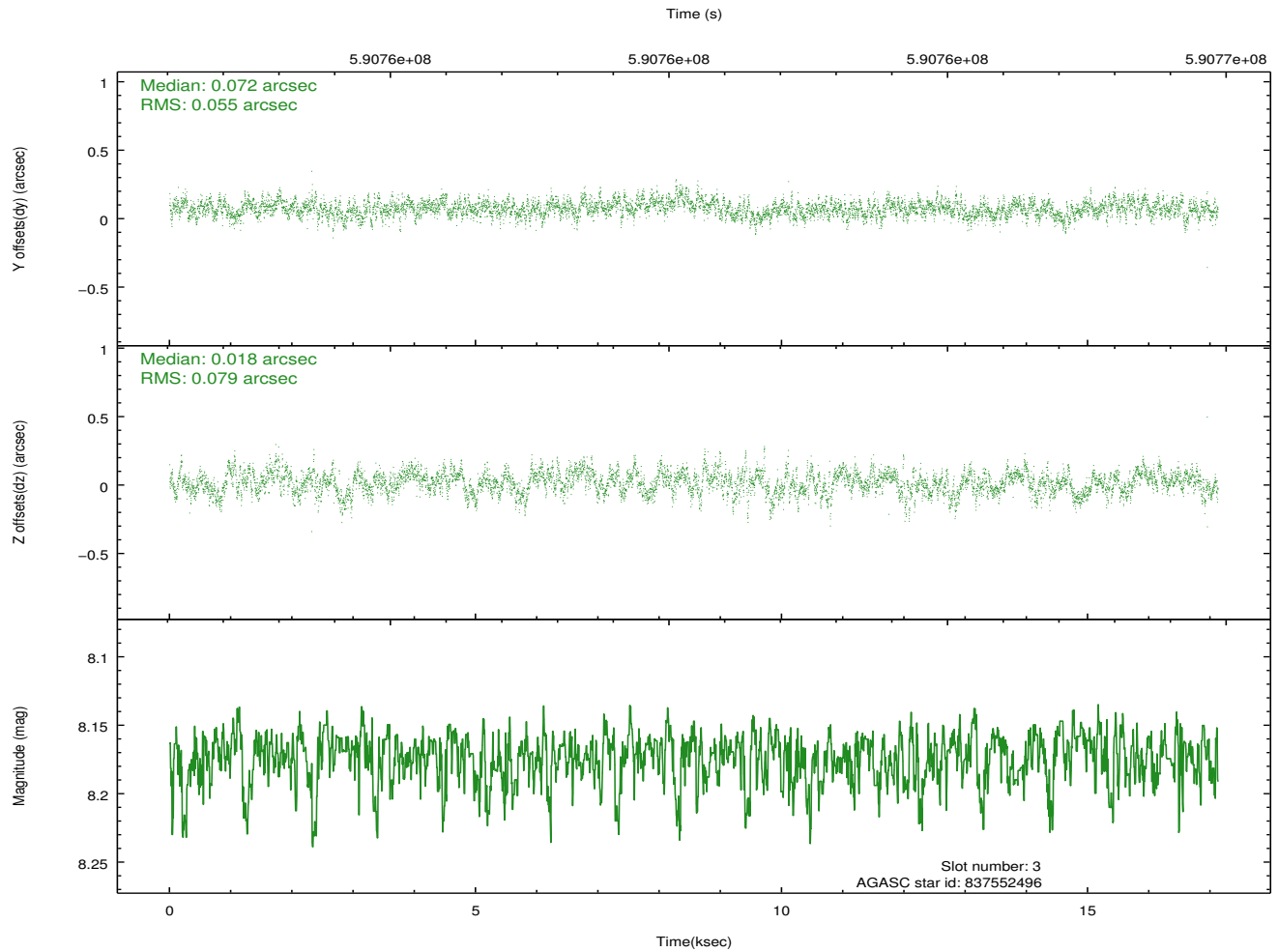
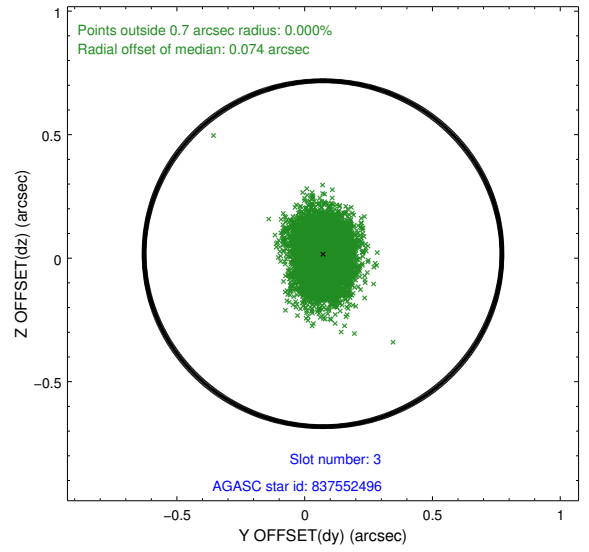
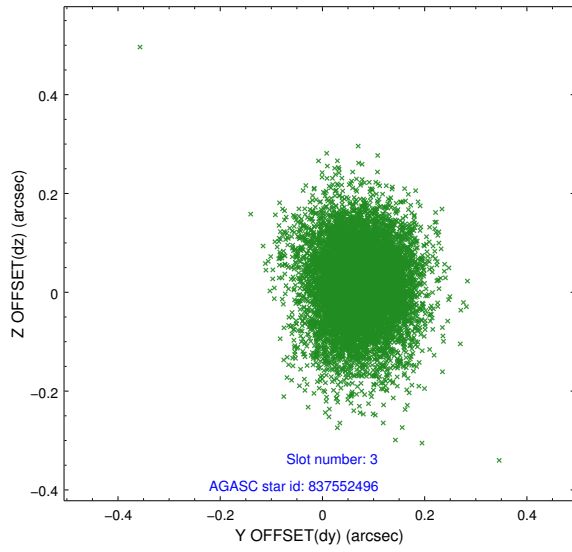
Slot Statistics

slot	status	used	id	mag	n_pts	med_dy	med_dz	dr1	dr2	ra	dec	mean_y	mean_z
0	FID		ACIS-S-2	6.95	4178	-0.277	-0.179	0.010	0.020	0.000000	0.000000	-768.76	-1741.40
1	FID		ACIS-S-4	7.06	4178	0.308	0.160	0.013	0.029	0.000000	0.000000	2145.06	167.05
2	FID		ACIS-S-6	7.19	4175	-0.059	0.027	0.011	0.022	0.000000	0.000000	393.85	804.67
3	GUIDE	used	837552496	8.17	8355	0.072	0.018	0.100	0.170	342.080951	-19.701467	383.53	-1832.70
4	GUIDE	used	837553056	8.53	8350	-0.136	-0.249	0.108	0.177	342.945450	-19.470260	1869.06	829.53
5	GUIDE	used	837556264	8.67	8347	0.452	0.373	0.120	0.193	342.734109	-18.738475	-498.26	2191.49
6	GUIDE	used	837556808	8.46	8353	0.063	0.074	0.112	0.180	341.888952	-19.162805	-1451.09	-923.20
7	GUIDE	used	837559576	8.70	8352	-0.455	-0.212	0.116	0.196	342.342242	-18.401123	-2303.82	2105.17

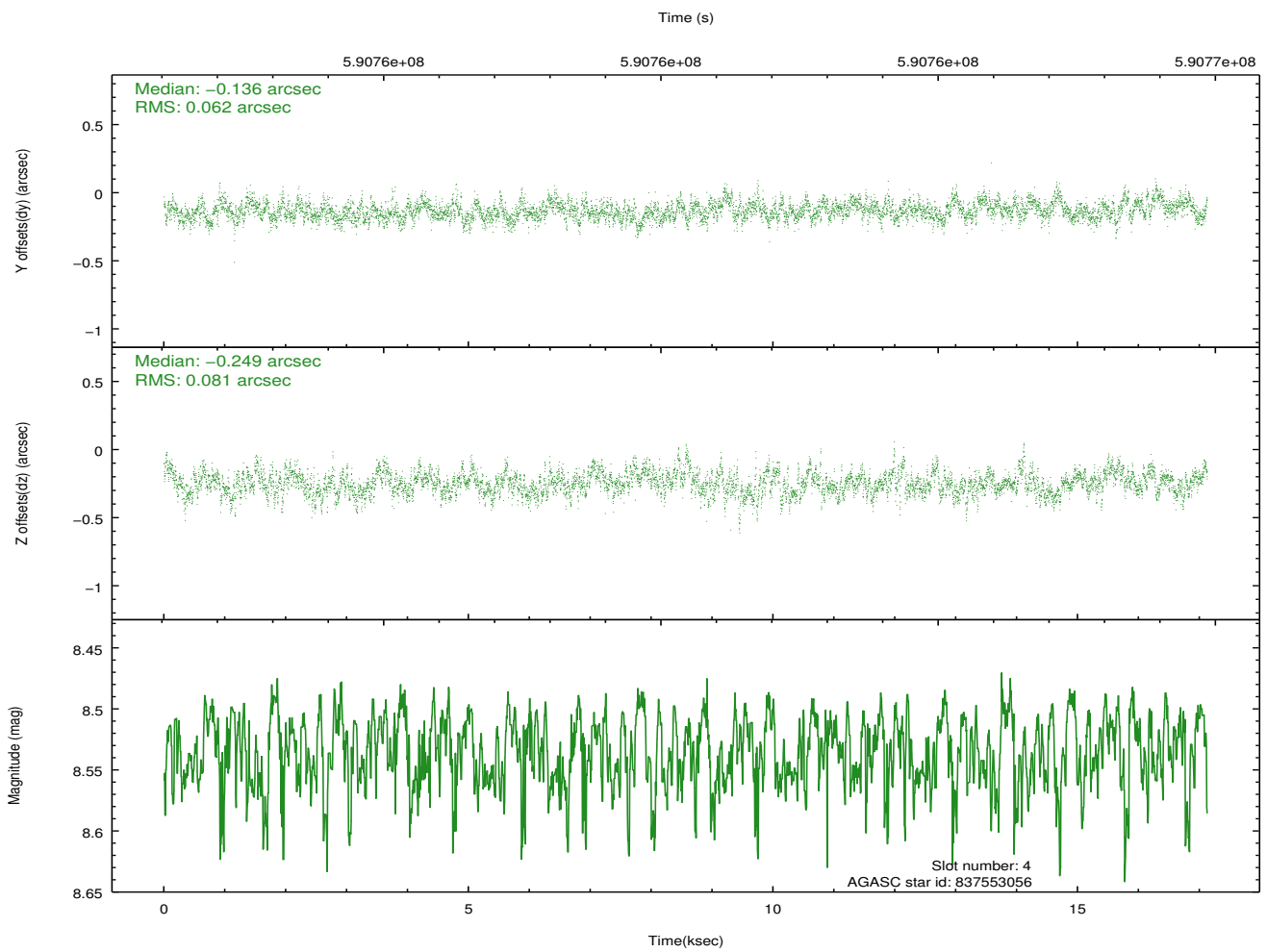
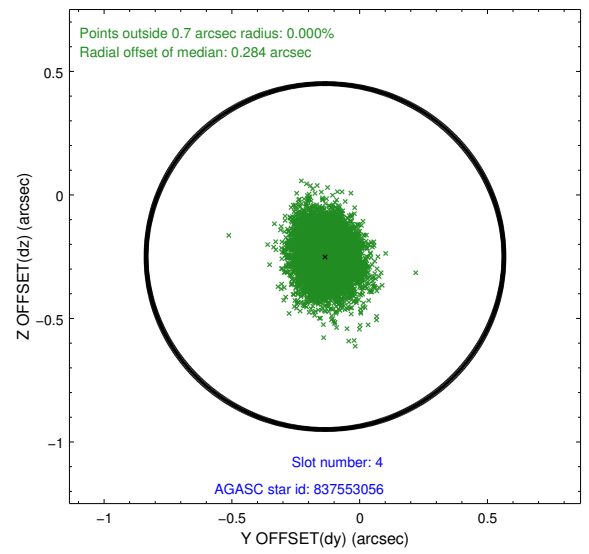
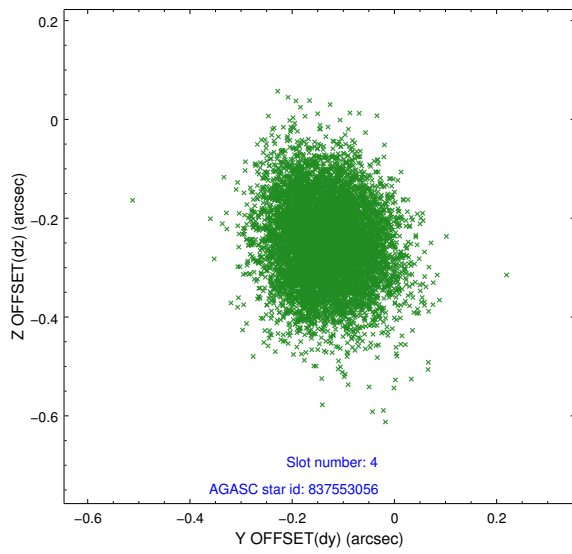
∞

2.4 Star Slots

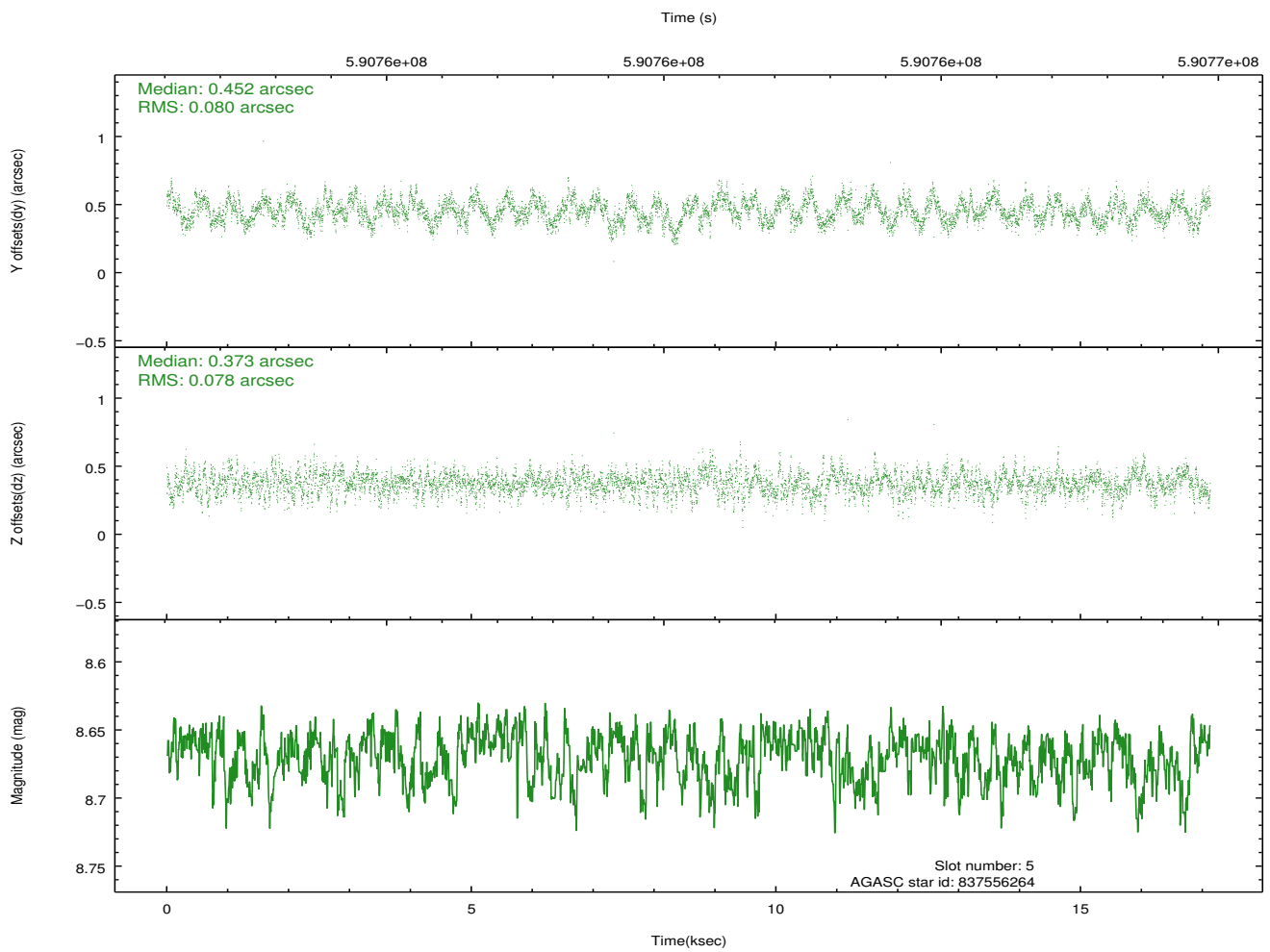
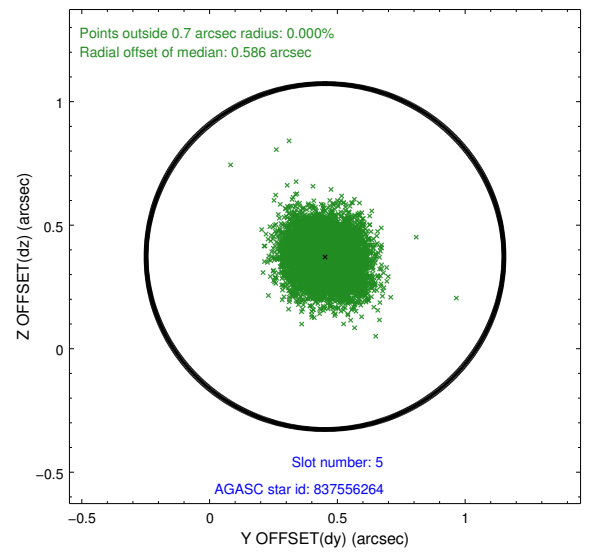
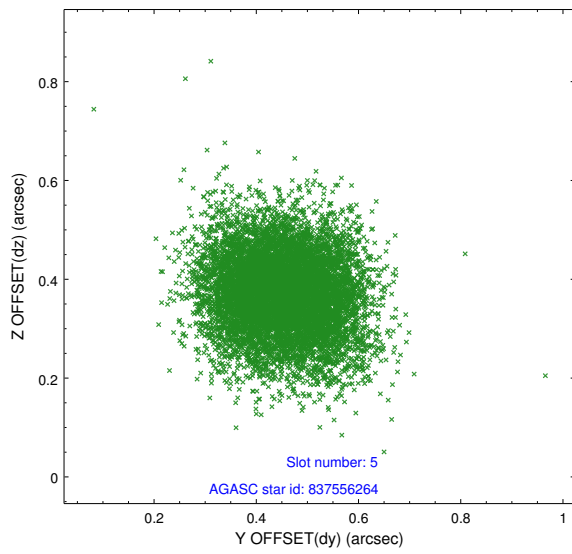
2.4.1 Slot 3



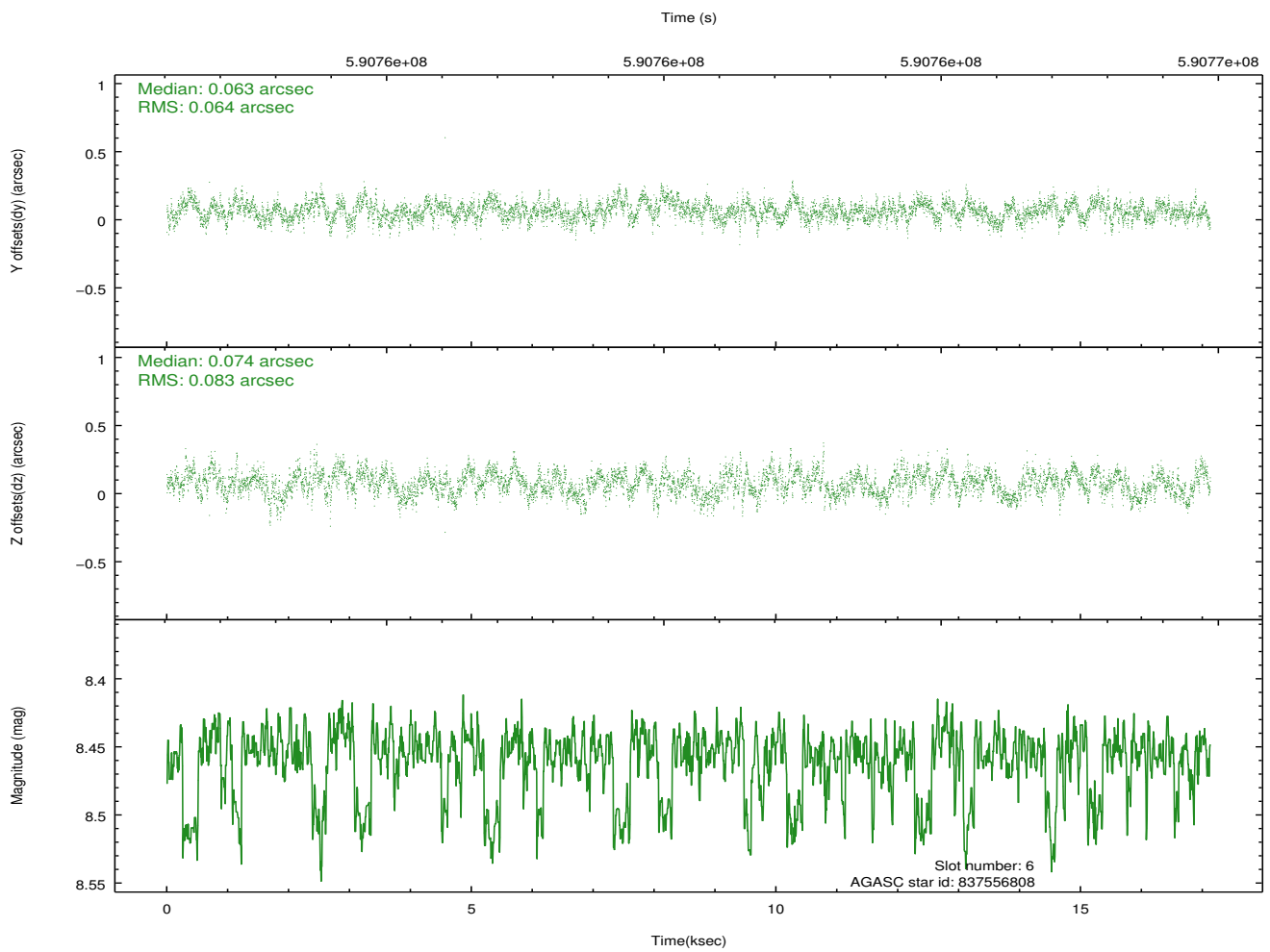
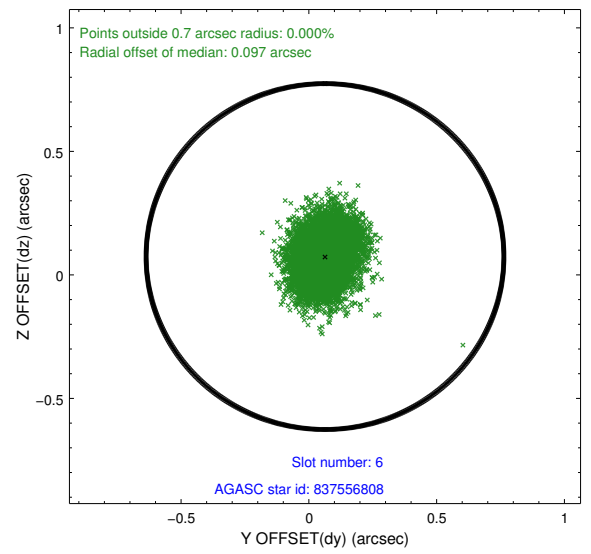
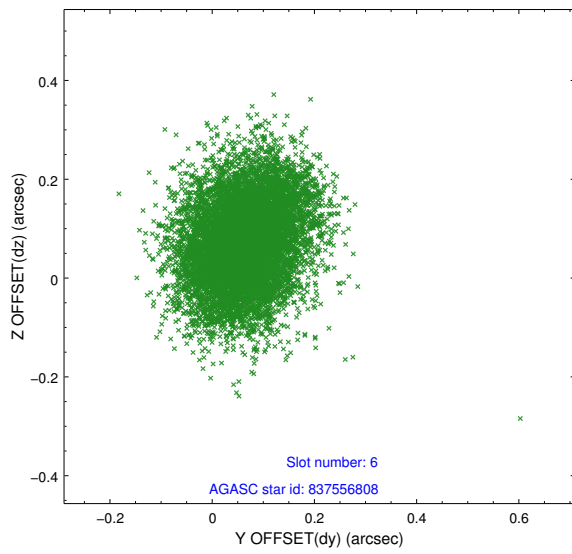
2.4.2 Slot 4



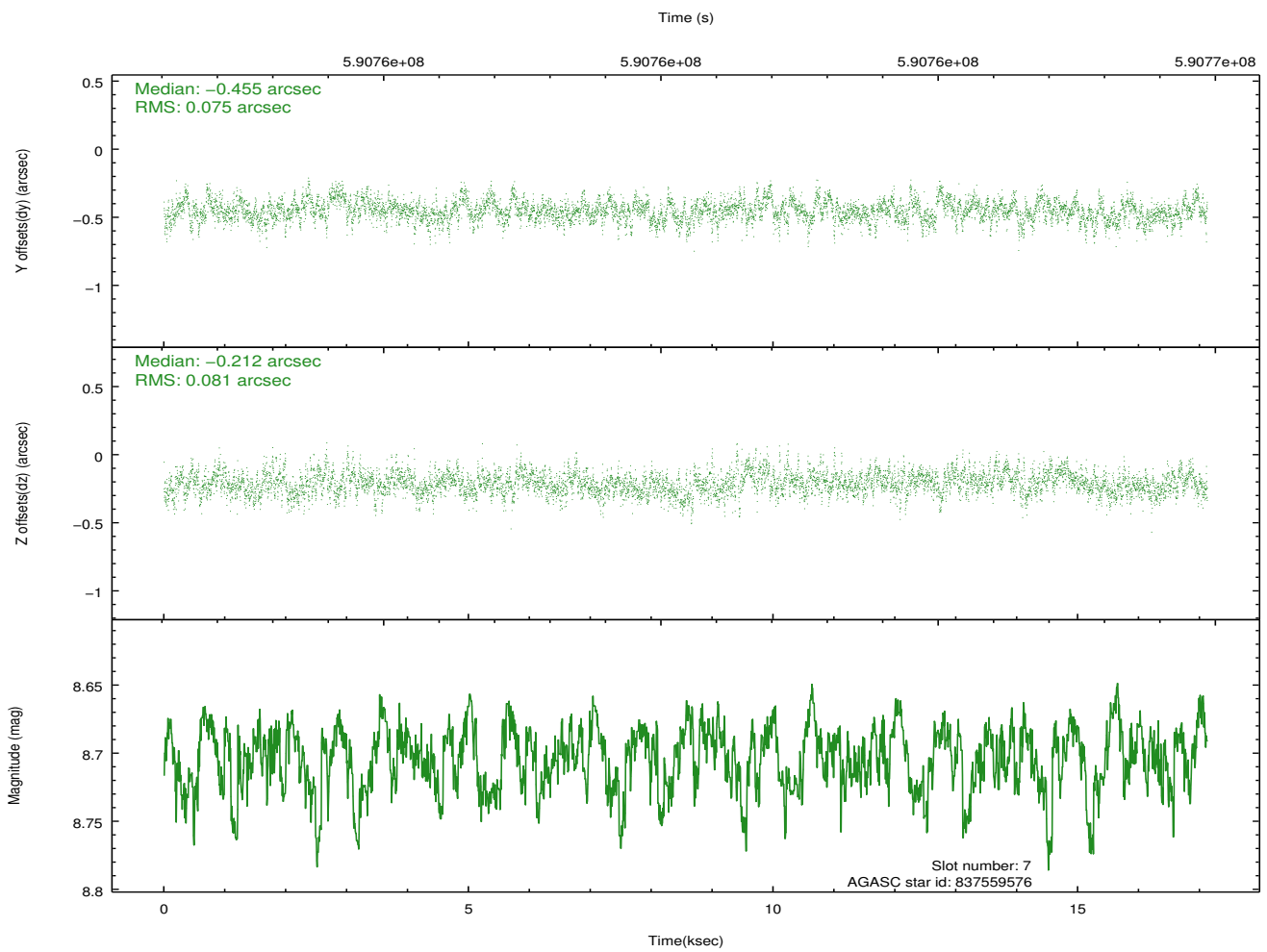
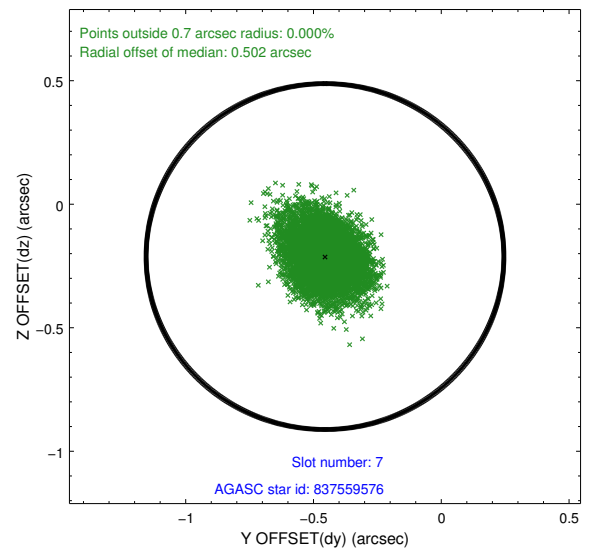
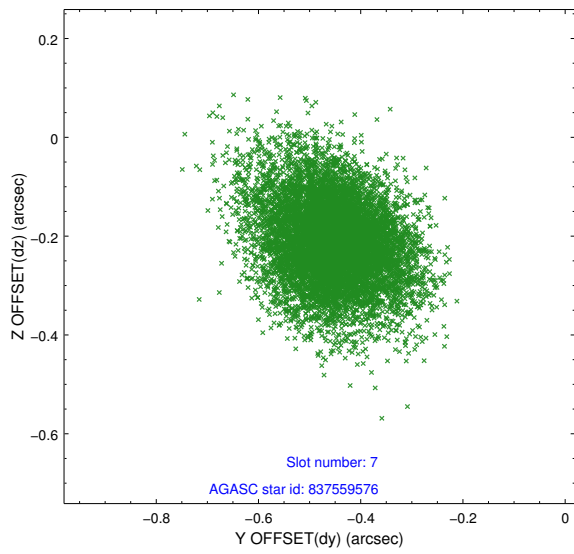
2.4.3 Slot 5



2.4.4 Slot 6

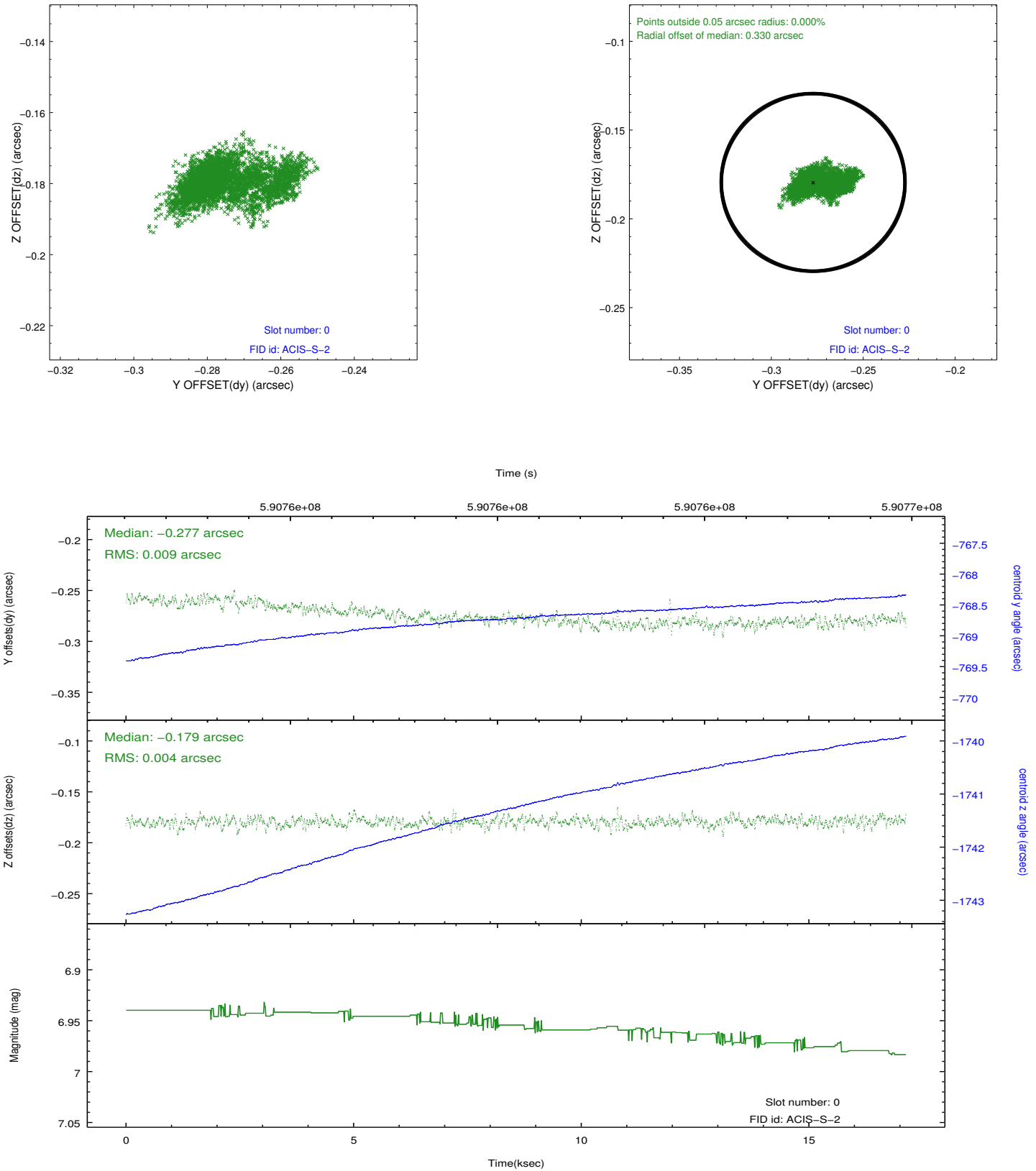


2.4.5 Slot 7

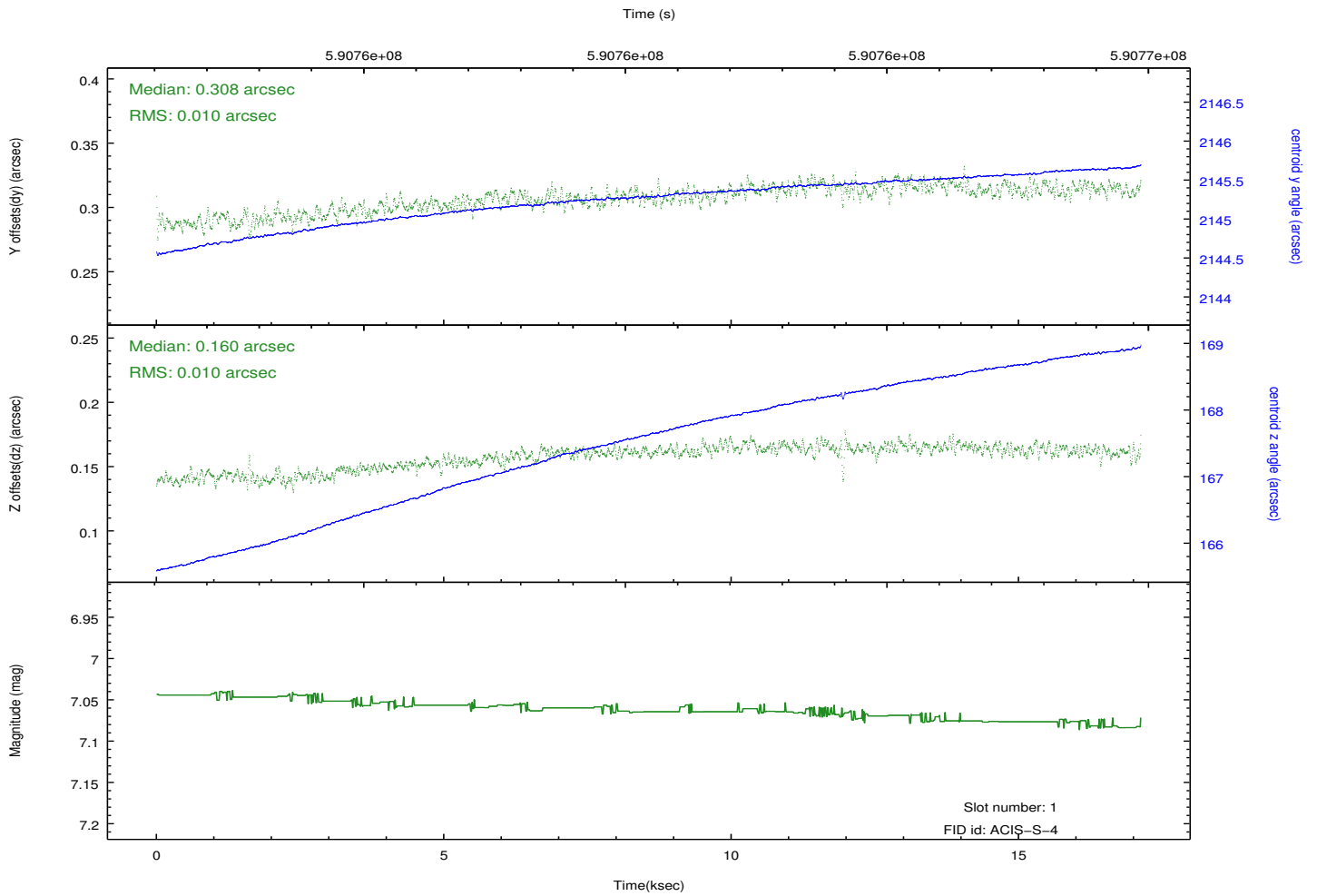
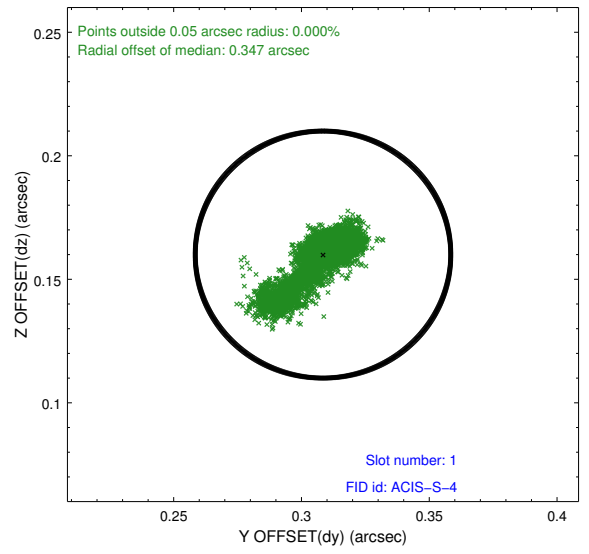
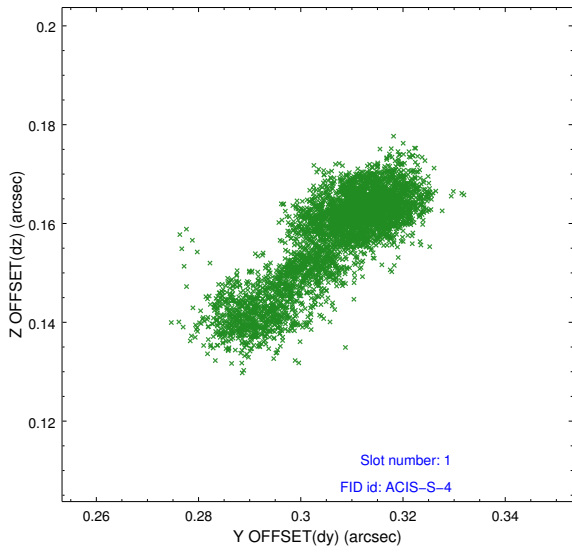


2.5 FID Slots

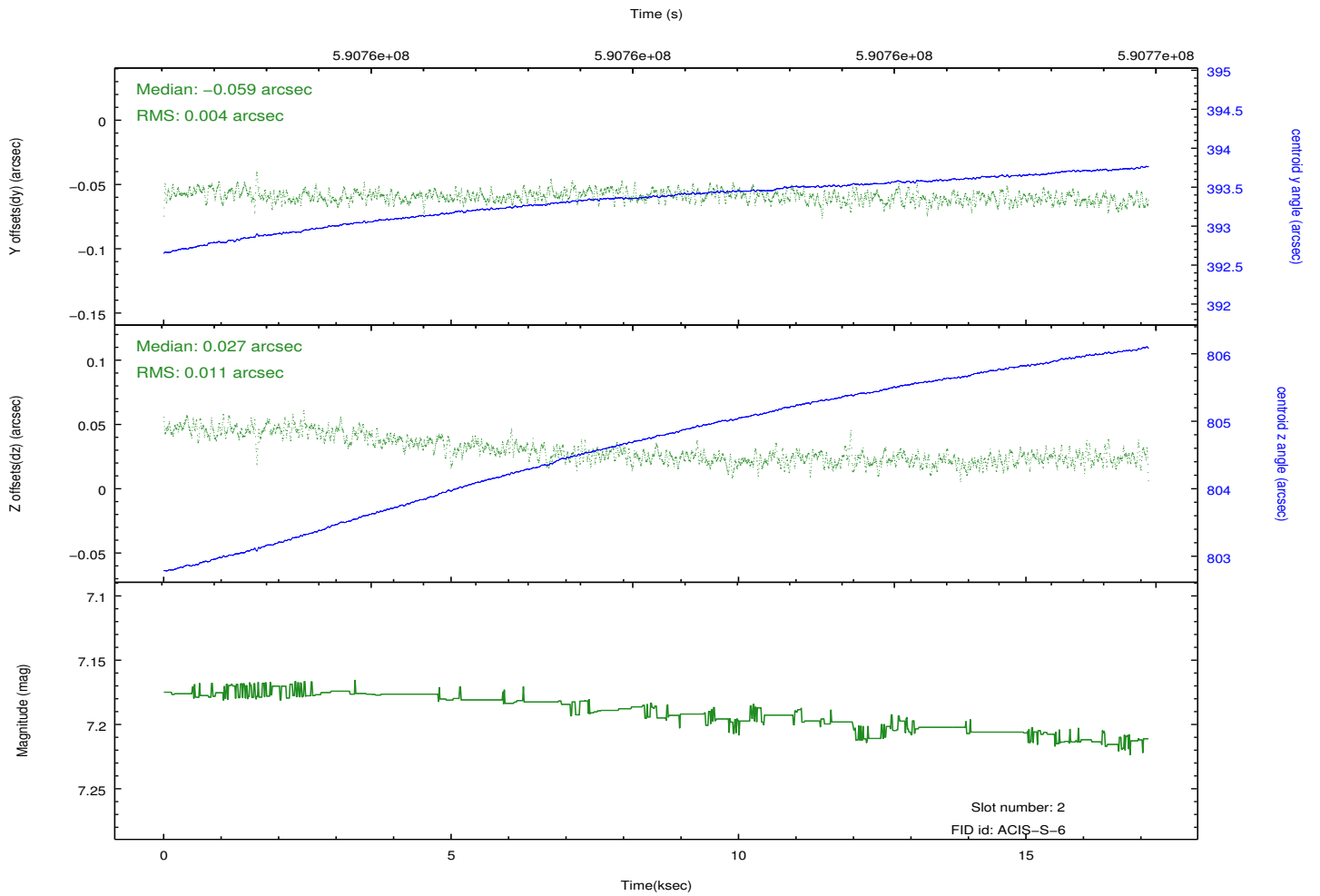
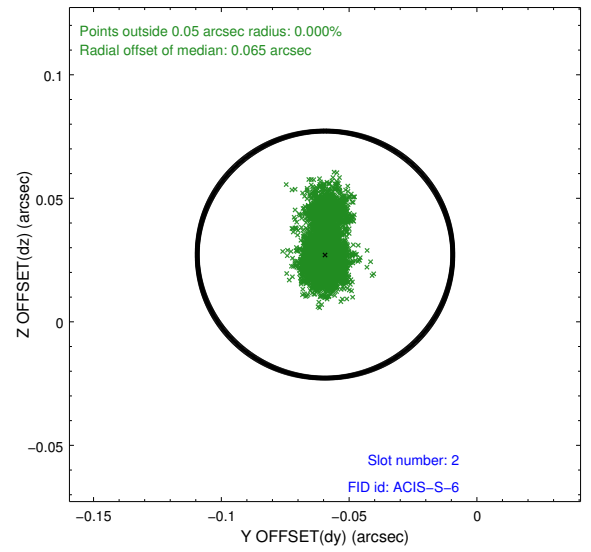
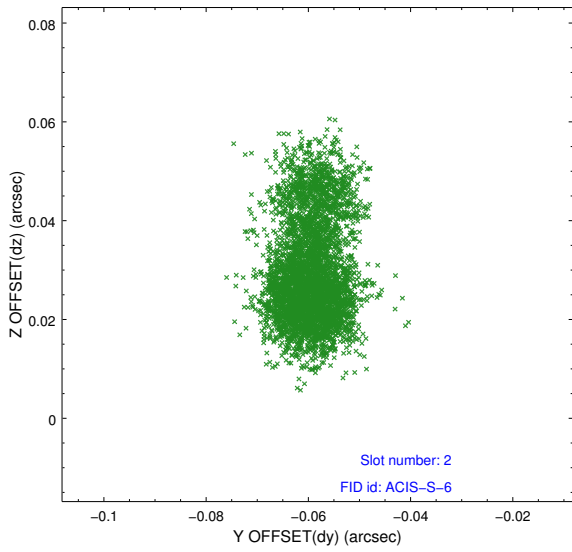
2.5.1 Slot 0



2.5.2 Slot 1



2.5.3 Slot 2



A Summary

A.1 Status

V&V Scientist	Joy Nichols
V&V Date (YYYY-MM-DD)	2016.09.21
V&V Edition	1
V&V Disposition and Status	OK
V&V Charge Time	17.069533269644

A.2 Comments