

V&V Reference Report

L2 ASCDS Version : 10.5.2

Observation 19977 - L2 Version 1
Chandra X-Ray Center

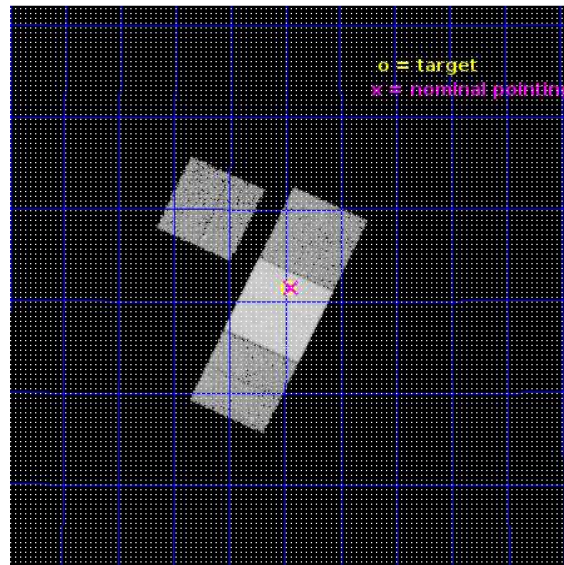
L2 Processing Date : Dec 27 2016

Contents

1	Front	2
2	OBI	3
2.1	OBI	3
2.1.1	Images	3
2.1.2	Bias	3
2.1.3	Parameters	4
2.1.4	Events	4
2.2	Compared Parameters	5
2.3	Aspect	6
2.4	Star Slots	9
2.4.1	Slot 3	9
2.4.2	Slot 4	10
2.4.3	Slot 5	11
2.4.4	Slot 6	12
2.4.5	Slot 7	13
2.5	FID Slots	14
2.5.1	Slot 0	14
2.5.2	Slot 1	15
2.5.3	Slot 2	16
A	Summary	17
A.1	Status	17
A.2	Comments	17

1 Front

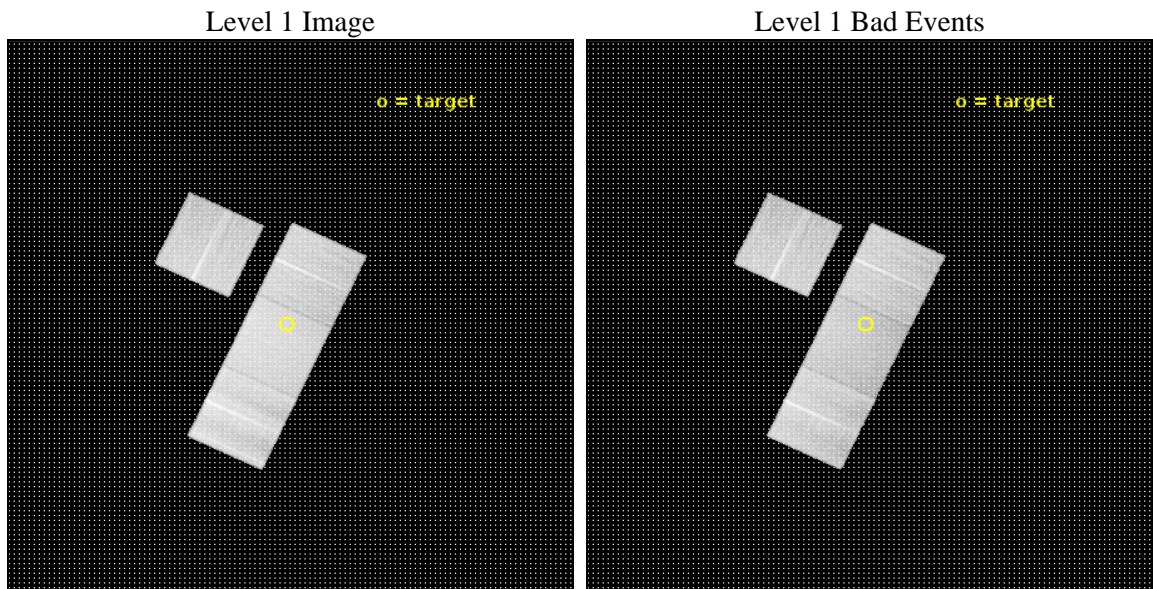
seq_num	703347	Sequence number
obs_id	19977	Observation id
title	A quadruple quasar coincident with a giant Ly-alpha nebula and a protocluster at z=2	Proposal title
observer	Cristian Vignali	Principal investigator
object	SDSSJ084158.47+392121.0	Source name
dtcycle	0	
cycle	P	events from which exps? Prim/Second/Both
ra_targ	130.49375	Observer's specified target RA [deg]
dec_targ	39.355833	Observer's specified target Dec [deg]
ra_nom	130.48589139904	Nominal RA [deg]
dec_nom	39.3579344444579	Nominal Dec [deg]
roll_nom	115.16161927351	Nominal Roll [deg]
revision	1	Processing version of data
ontime	29120.001538038	Sum of GTIs [s]
livetime	28739.527280111	Livetime [s]
ontime2	29116.737437844	Sum of GTIs [s]
ontime6	29110.537327409	Sum of GTIs [s]
ontime7	29120.001538038	Sum of GTIs [s]
ontime8	29116.778377652	Sum of GTIs [s]
l2events	163232	Number of level 2 events



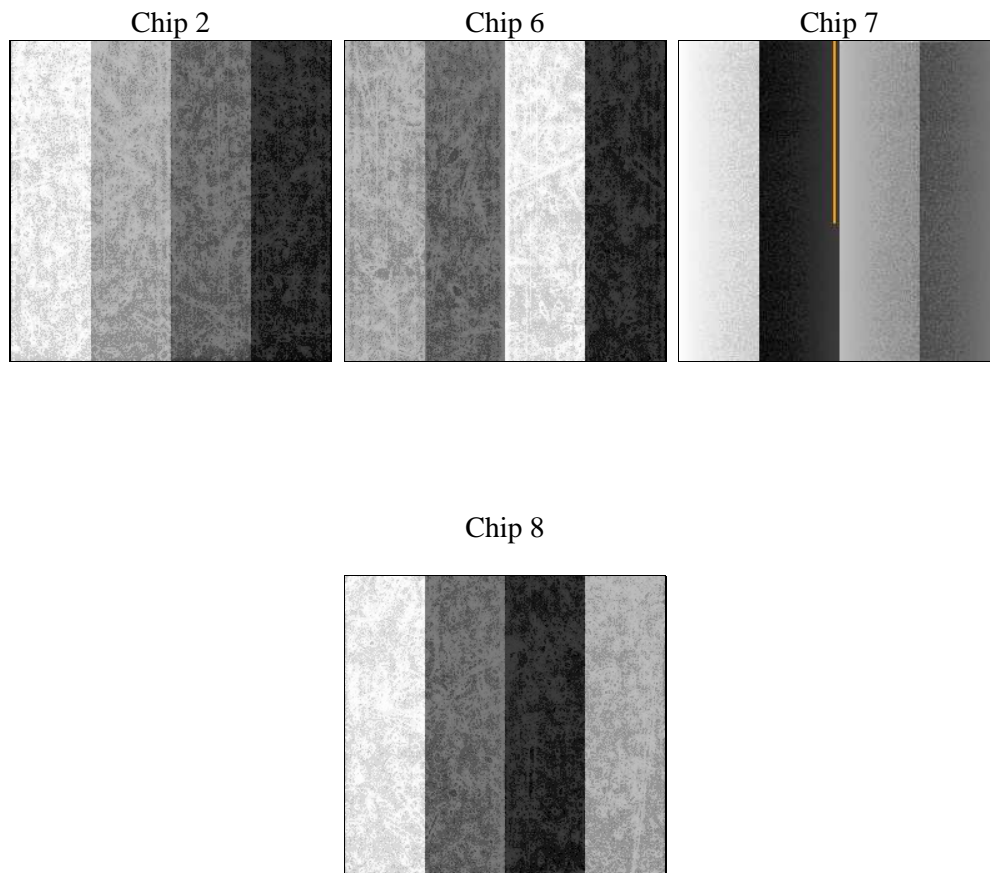
2 OBI

2.1 OBI

2.1.1 Images



2.1.2 Bias



2.1.3 Parameters

obi_num	0	Obi number	sched_exp_time	29000.000000	[s] Scheduled observation exposure time
ascdsver	10.5.2	Processing system revision	ontime	29120.001538038	Sum of GTIs [s]
caldbver	4.7.3	 	ontime2	29116.737437844	Sum of GTIs [s]
date	2016-12-27T15:34:50	Date and time of file creation	ontime6	29110.537327409	Sum of GTIs [s]
revision	1	Processing version of data	ontime7	29120.001538038	Sum of GTIs [s]
			ontime8	29116.778377652	Sum of GTIs [s]
			l1events	898947	Number of level 1 events

2.1.4 Events

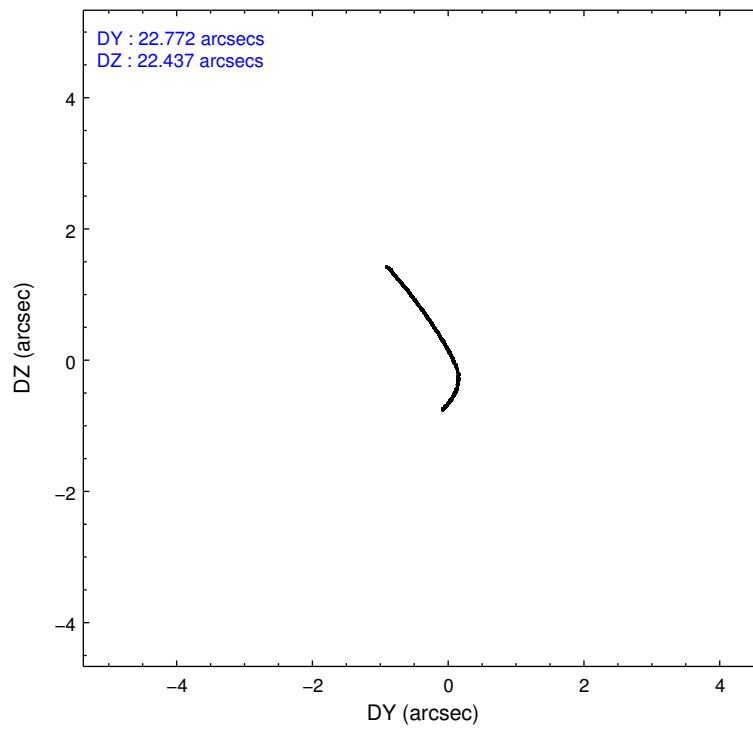
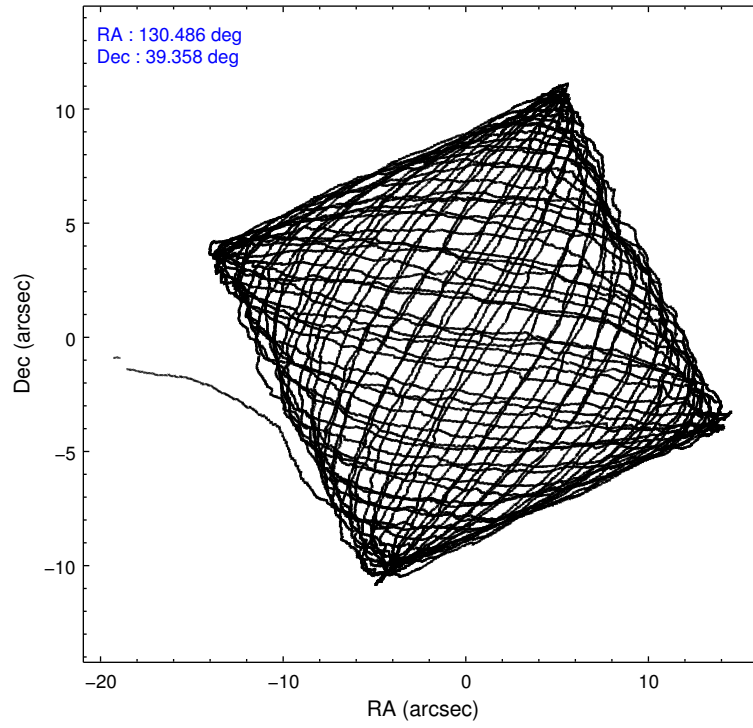
	ccd 2	ccd 6	ccd 7	ccd 8
level 1 events	193394	196944	249291	259318
rejected events	172921	174676	140246	189463
rejected %	89%	88%	56%	73%

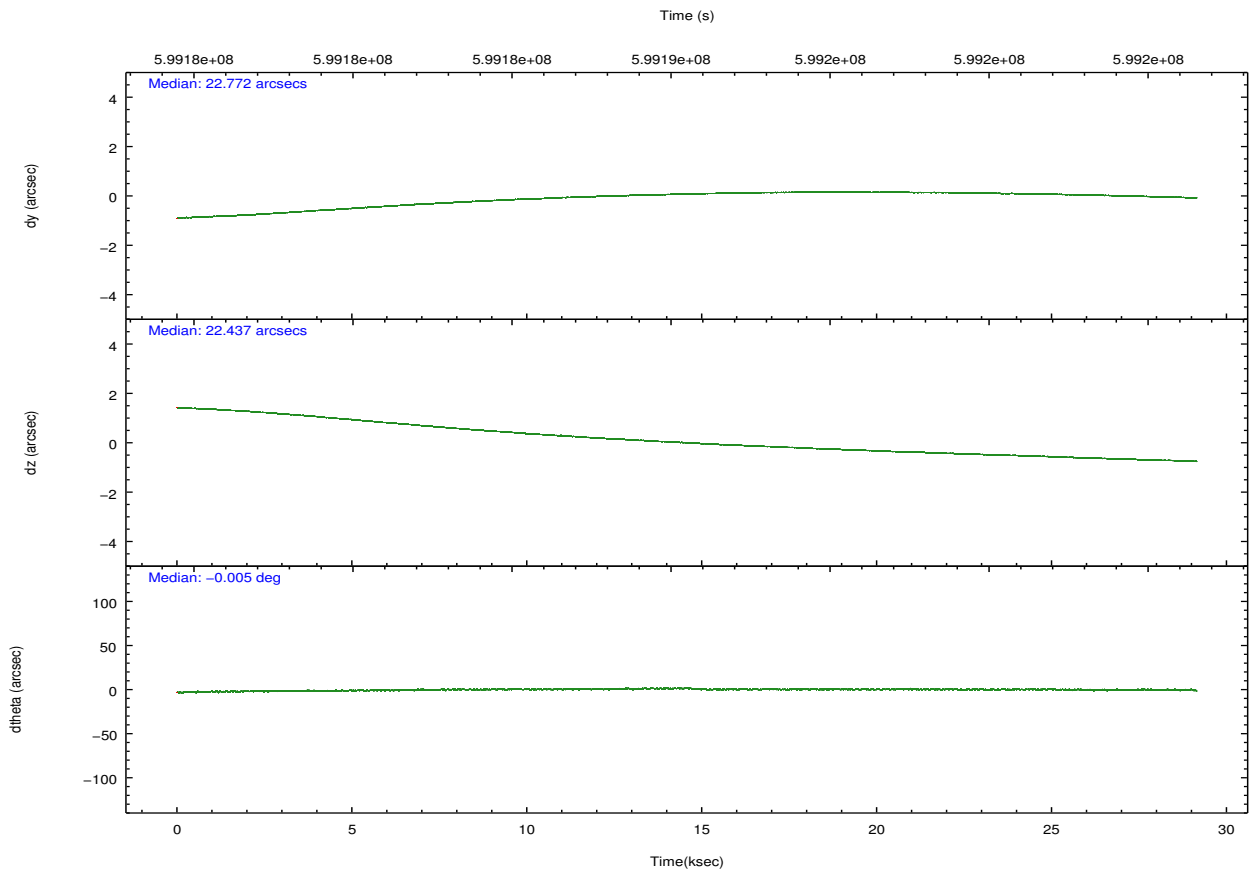
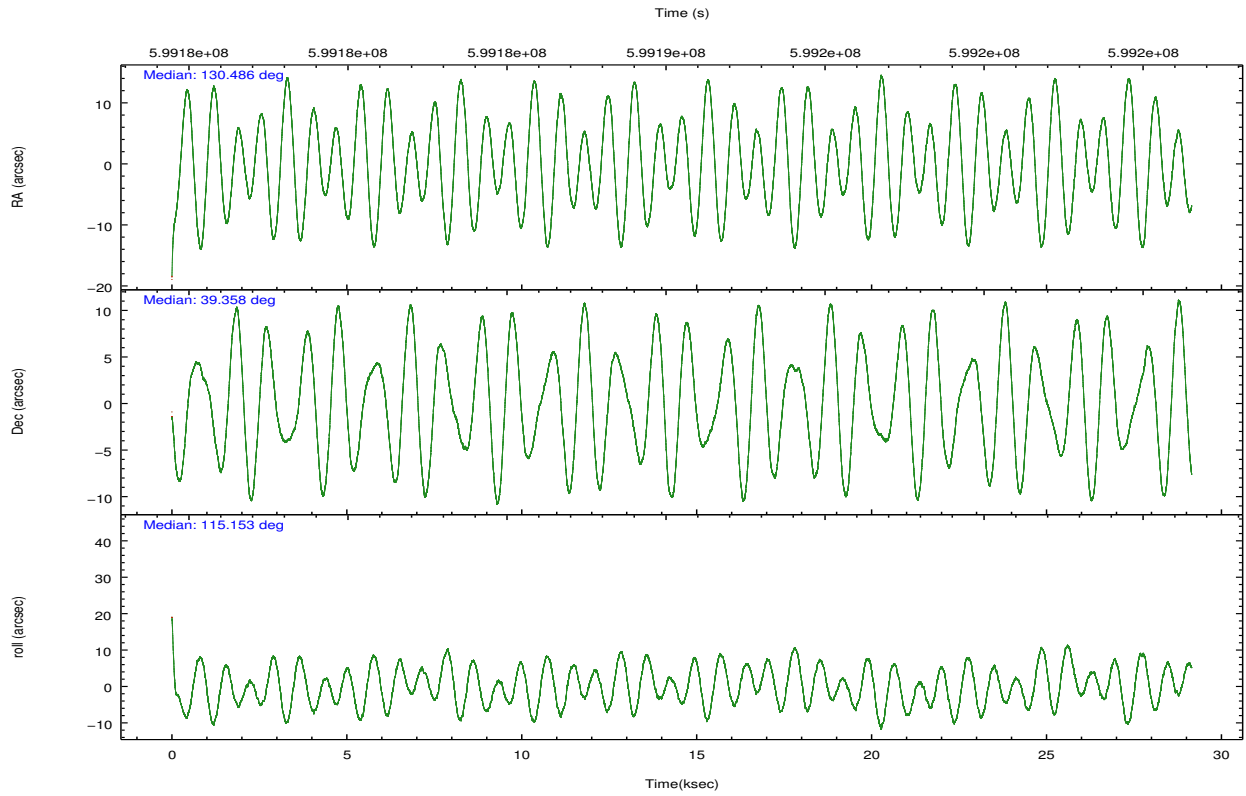
	ccd 2	ccd 6	ccd 7	ccd 8
grade 0 events	7070	7478	9252	19754
	3%	3%	3%	7%
grade 1 events	92	91	316	209
	0%	0%	0%	0%
grade 2 events	5150	5136	22784	17191
	2%	2%	9%	6%
grade 3 events	2048	2270	8943	7198
	1%	1%	3%	2%
grade 4 events	2116	2207	8846	6761
	1%	1%	3%	2%
grade 5 events	7787	9515	25155	14033
	4%	4%	10%	5%
grade 6 events	4091	5182	59238	18953
	2%	2%	23%	7%
grade 7 events	165040	165065	114757	175219
	85%	83%	46%	67%

2.2 Compared Parameters

Parameter	Planned	Actual	Parameter	Planned	Actual
Instrument	ACIS	ACIS	Obspar format version number	7	7
Detector	ACIS-2678	ACIS-2678	Obspar file type	PREDICTED	ACTUAL
Grating	NONE	NONE	Obspar update status	NONE	UPDATED
Data mode	VFAINT	VFAINT	CCD I0 on	N	N
Observation mode	POINTING	POINTING	CCD I1 on	N	N
[deg] Pointing RA	130.515298	130.4858913990361	CCD I2 on	O2	Y
[deg] Pointing Dec	39.342556	39.35793444457877	CCD I3 on	O1	N
[deg] Pointing Roll	114.986336	115.1616192735058	CCD S0 on	N	N
[mm] SIM focus pos	-0.684267	-0.6828225247311905	CCD S1 on	N	N
[mm] SIM defocus	0	0.001444936568705701	CCD S2 on	Y	Y
[mm] SIM translation stage pos	-190.132523	-190.1400660498719	CCD S3 on	Y	Y
[mm] SIM translation stage offset	0	0.00754346686406393	CCD S4 on	Y	Y
[s] Observation start time (MET)	599176071.184000	599174909.98787	CCD S5 on	N	N
Observation start date	2016-12-26T21:46:43	2016-12-26T21:28:29	Number of optional ACIS chips dropped	1	1
[s] Observation end time (MET)	599205071.184000	599205861.40216	On-chip summing requested	N	N
Observation end date	2016-12-27T05:50:03	2016-12-27T06:04:21	Subarray requested	NONE	NONE
Read mode	TIMED	TIMED	Alternating exposures requested	N	N
			[s] Primary exposure time	0.000000	3.1

2.3 Aspect





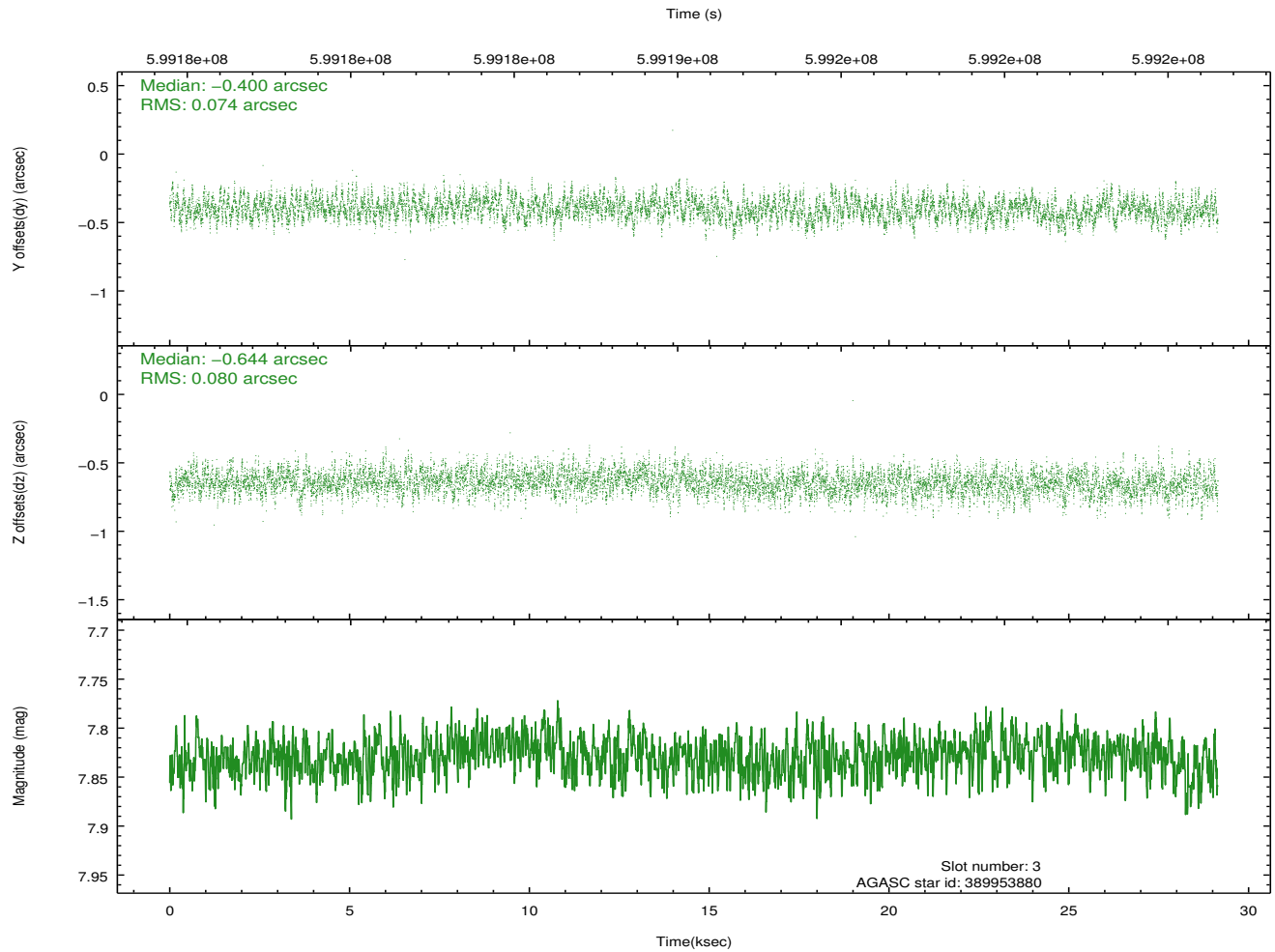
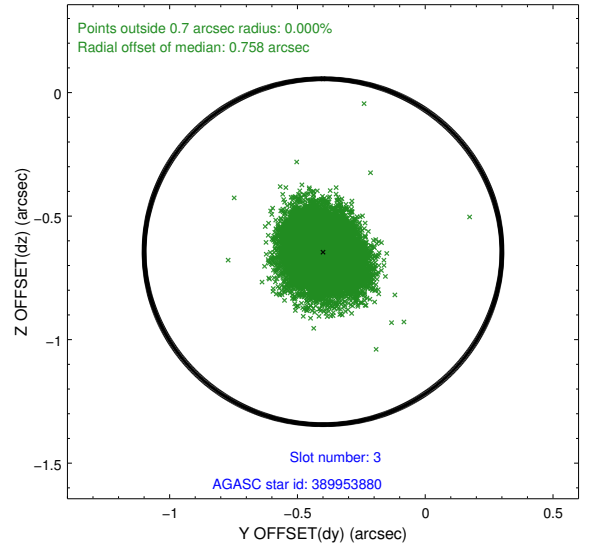
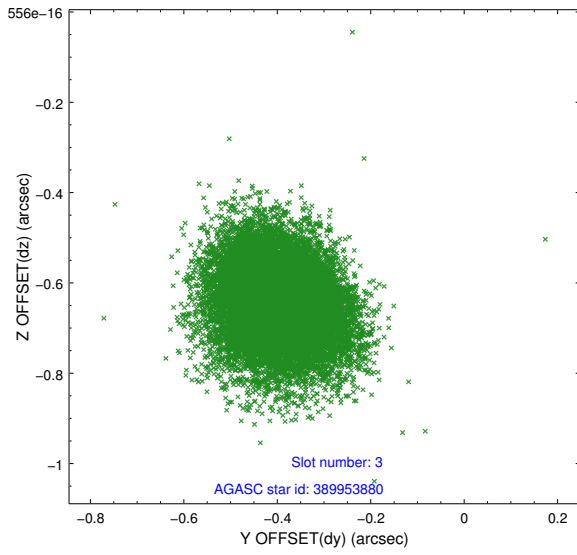
Slot Statistics

slot	status	used	id	mag	n_pts	med_dy	med_dz	dr1	dr2	ra	dec	mean_y	mean_z
0	FID		ACIS-S-2	7.01	7109	-0.214	-0.145	0.016	0.036	0.000000	0.000000	-776.00	-1744.32
1	FID		ACIS-S-4	7.11	7110	0.503	0.140	0.020	0.037	0.000000	0.000000	2137.92	164.41
2	FID		ACIS-S-5	7.12	7108	-0.323	0.011	0.018	0.055	0.000000	0.000000	-1828.87	157.98
3	GUIDE	used	389953880	7.83	14215	-0.400	-0.644	0.117	0.187	129.484084	39.644812	2208.12	2124.42
4	GUIDE	used	390865160	8.70	14206	0.192	0.135	0.113	0.184	130.458997	39.150226	-560.64	435.28
5	GUIDE	used	390866656	7.99	14216	0.028	0.363	0.110	0.182	131.112779	39.862716	1005.33	-2289.26
6	GUIDE	used	390867952	8.92	14205	-0.015	0.259	0.107	0.181	130.507524	39.576875	774.05	-336.38
7	GUIDE	used	390870832	6.62	14219	0.194	-0.111	0.097	0.165	130.673915	39.061455	-1103.72	25.27

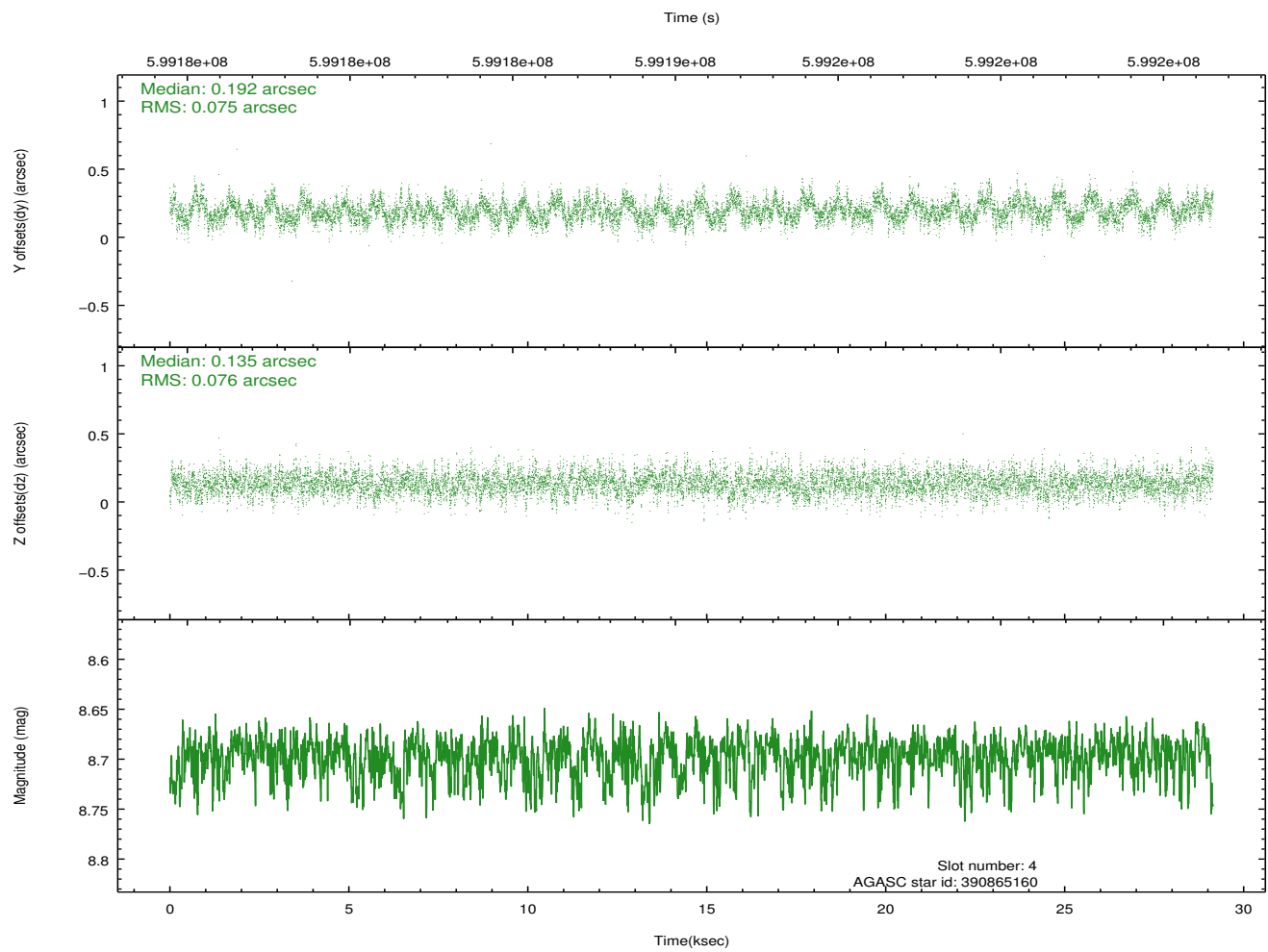
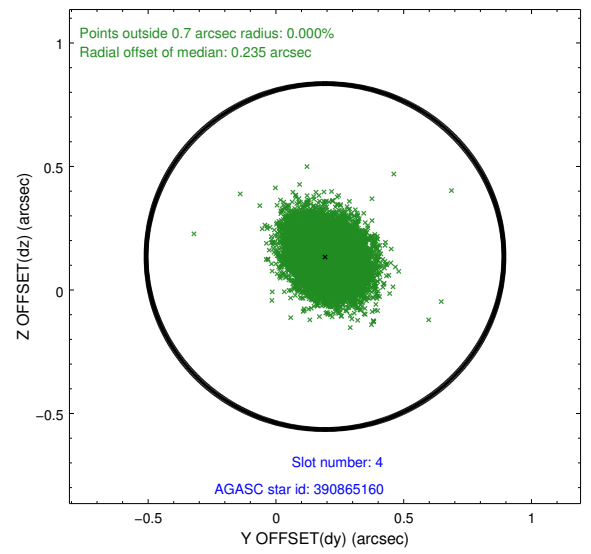
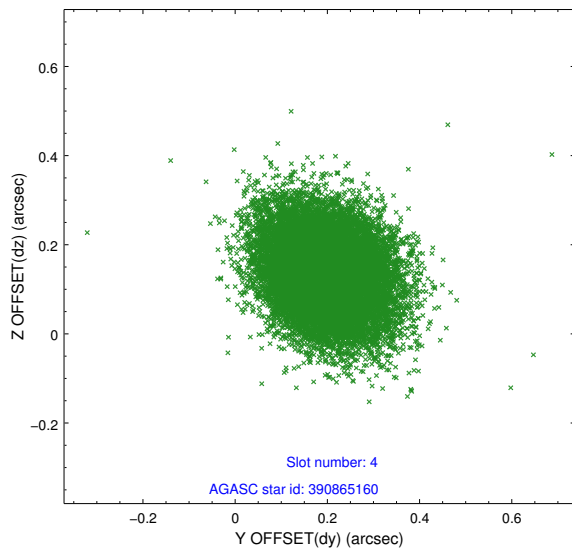
∞

2.4 Star Slots

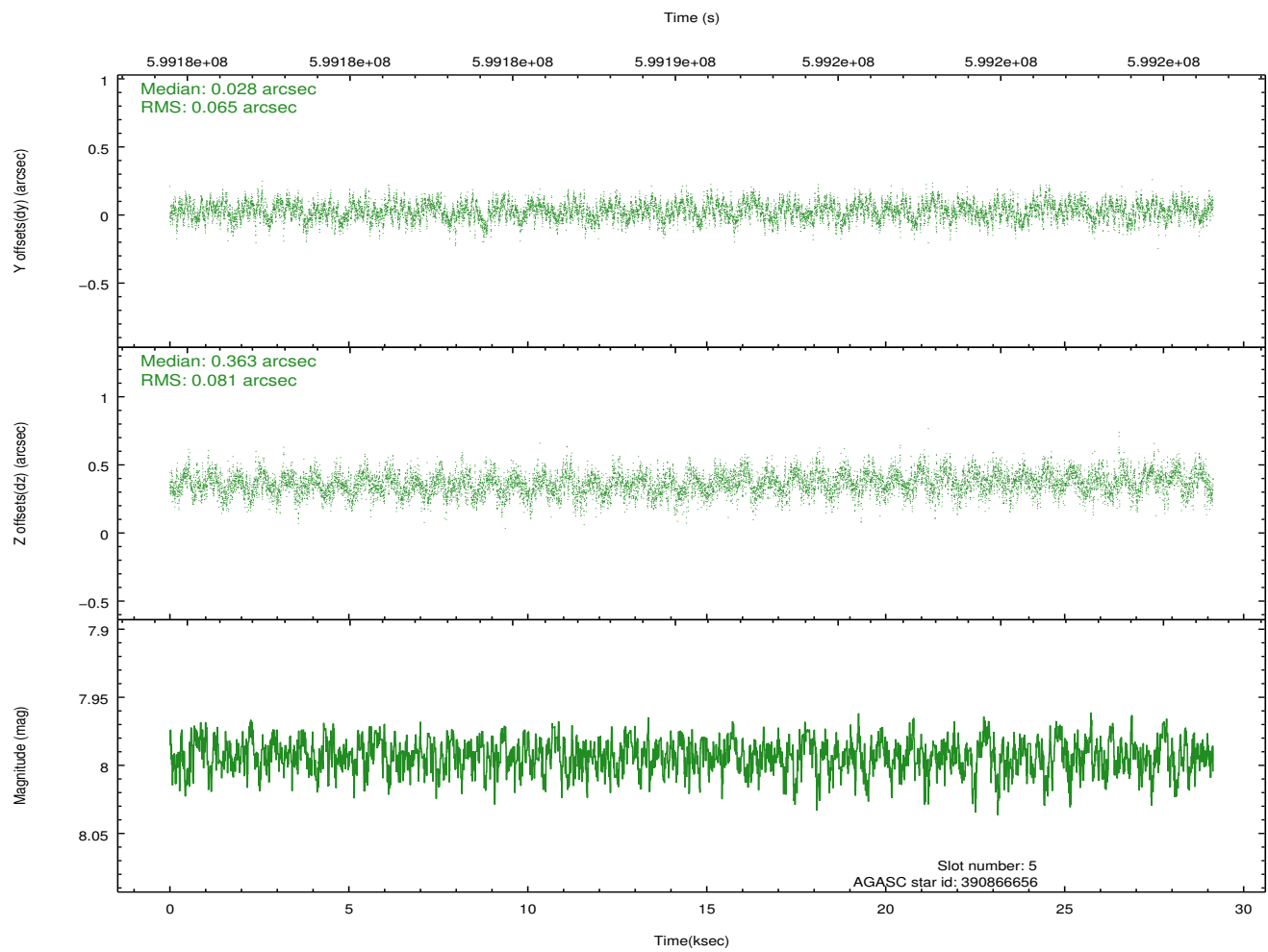
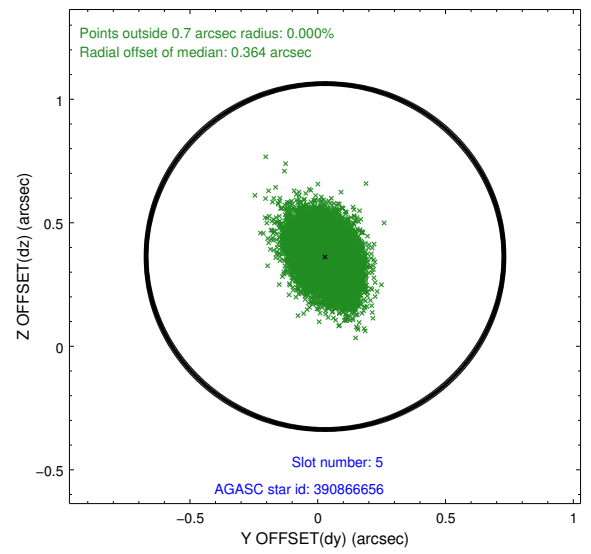
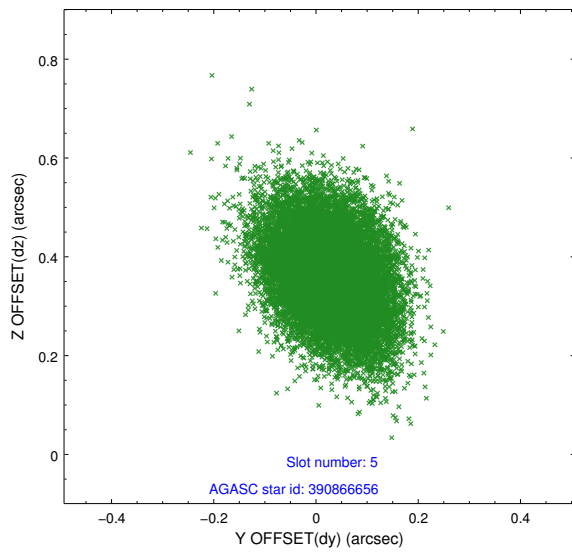
2.4.1 Slot 3



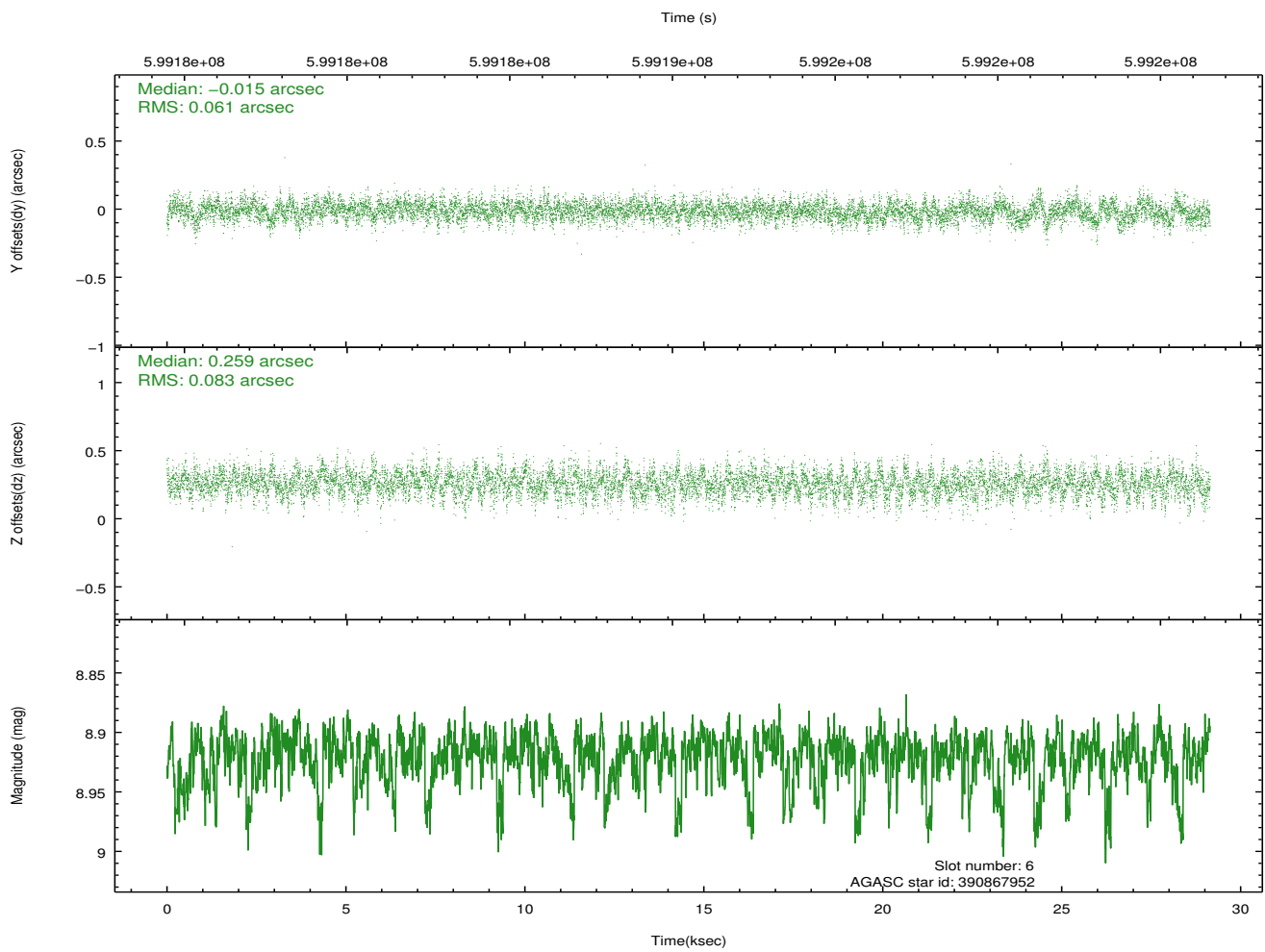
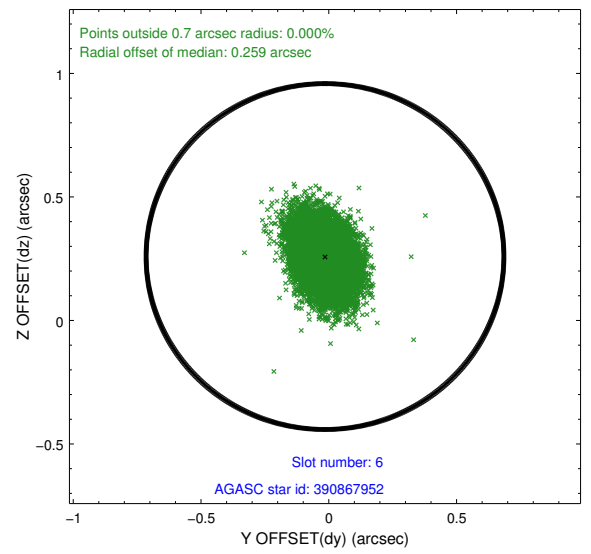
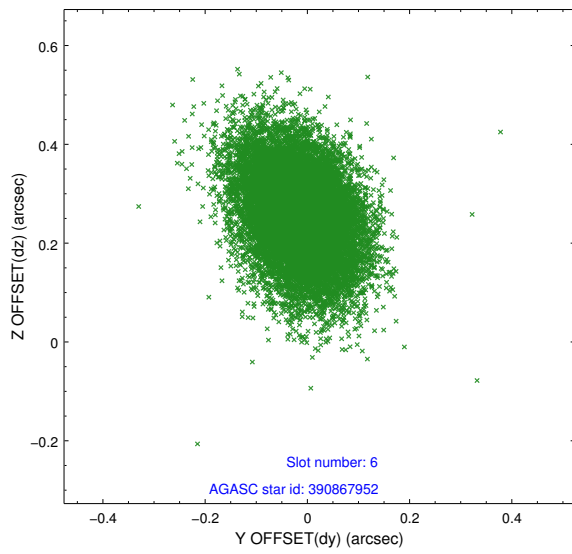
2.4.2 Slot 4



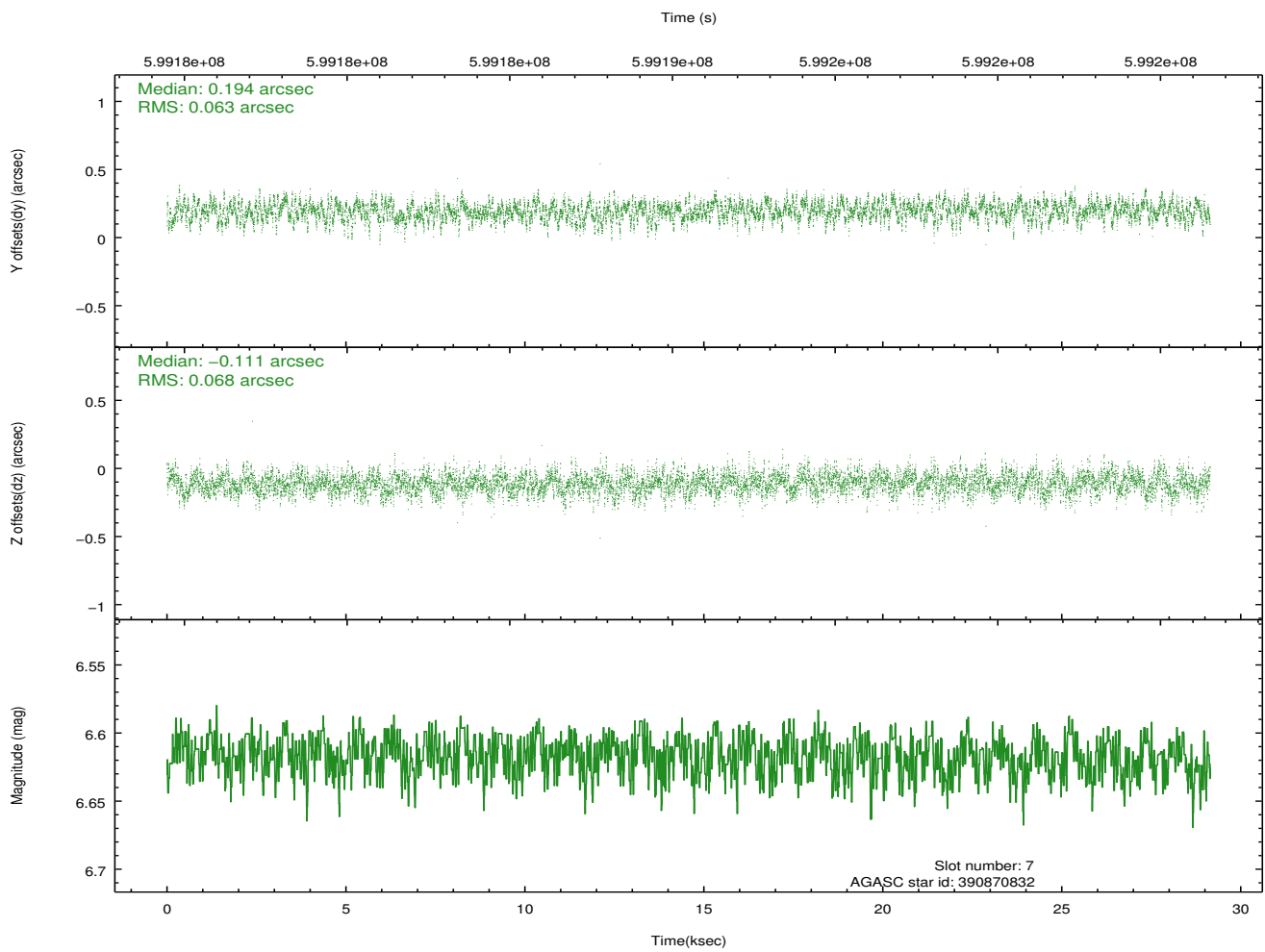
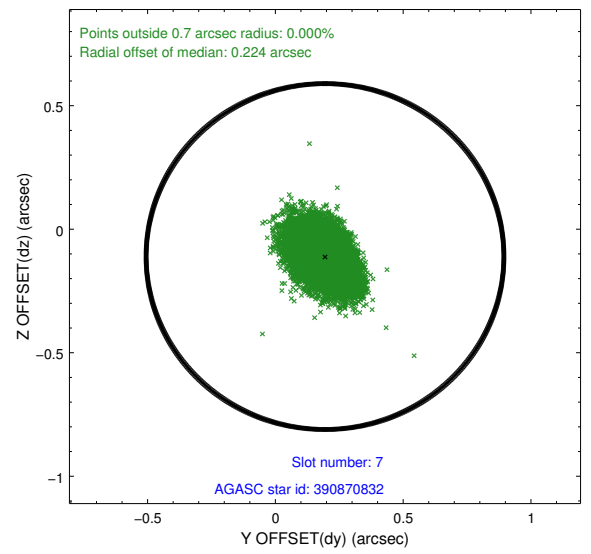
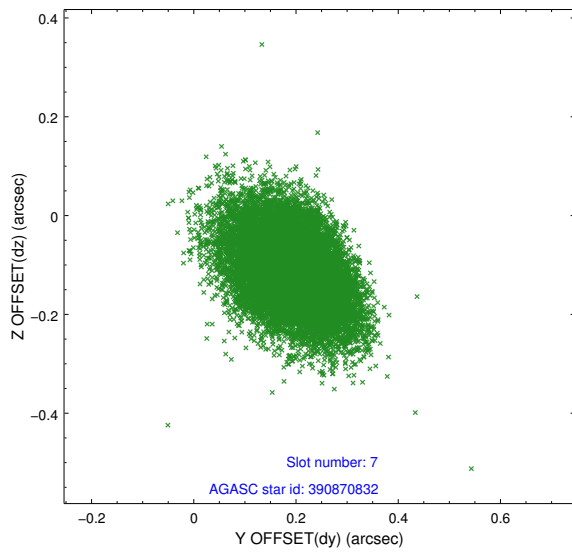
2.4.3 Slot 5



2.4.4 Slot 6

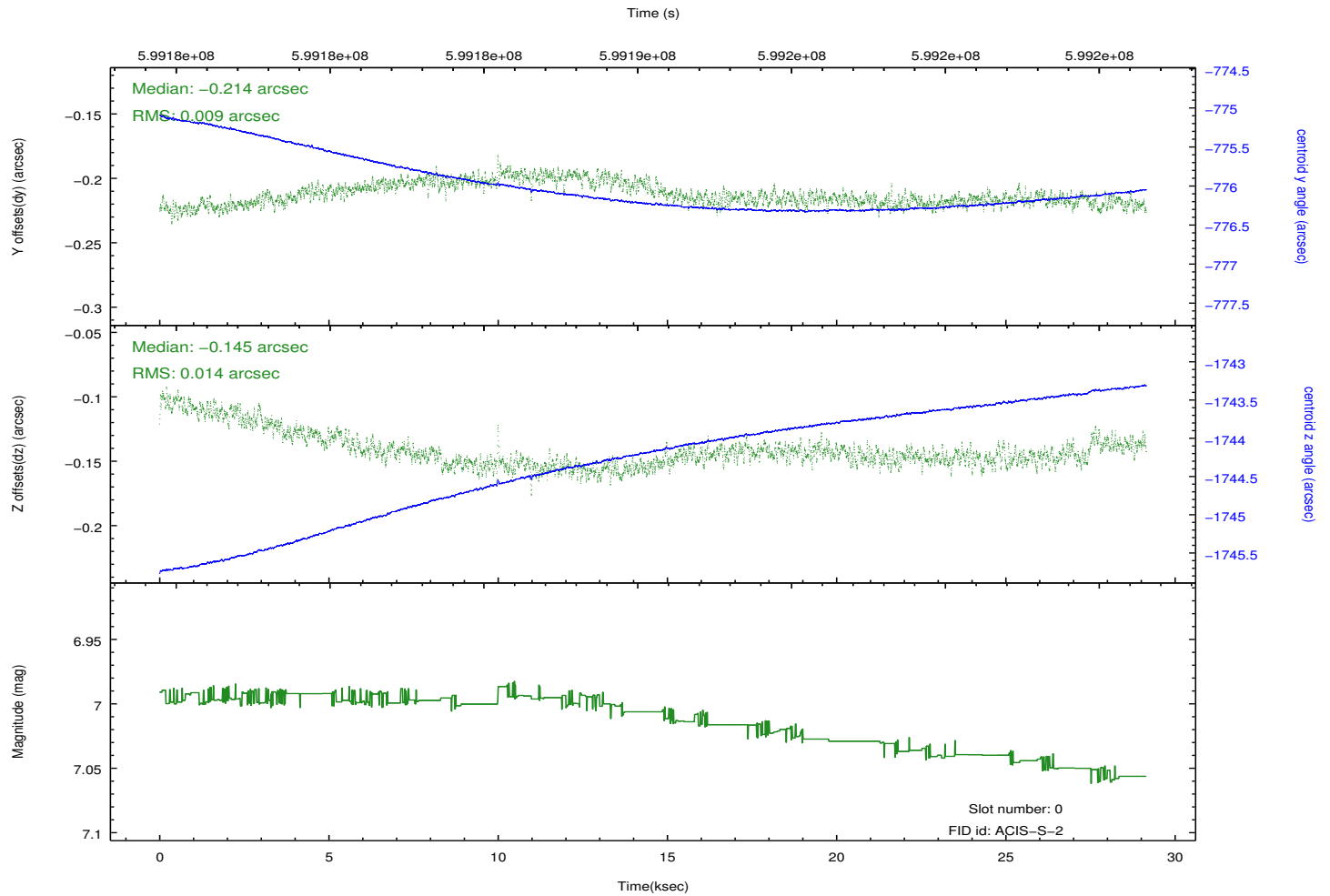
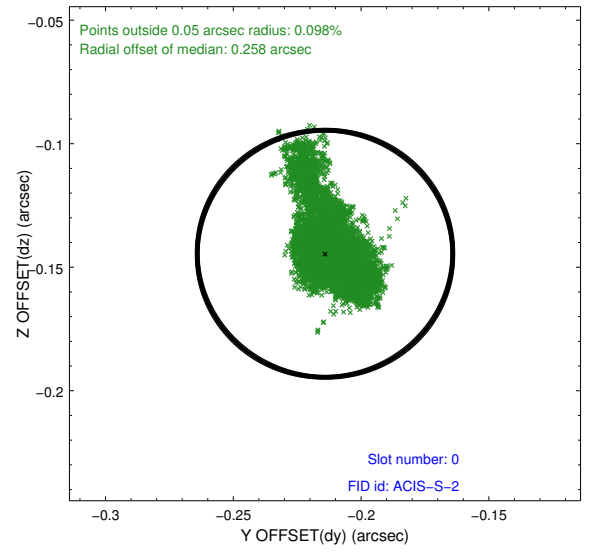
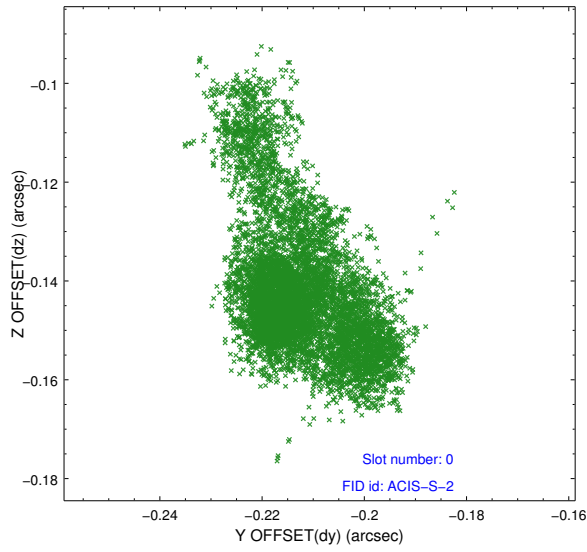


2.4.5 Slot 7

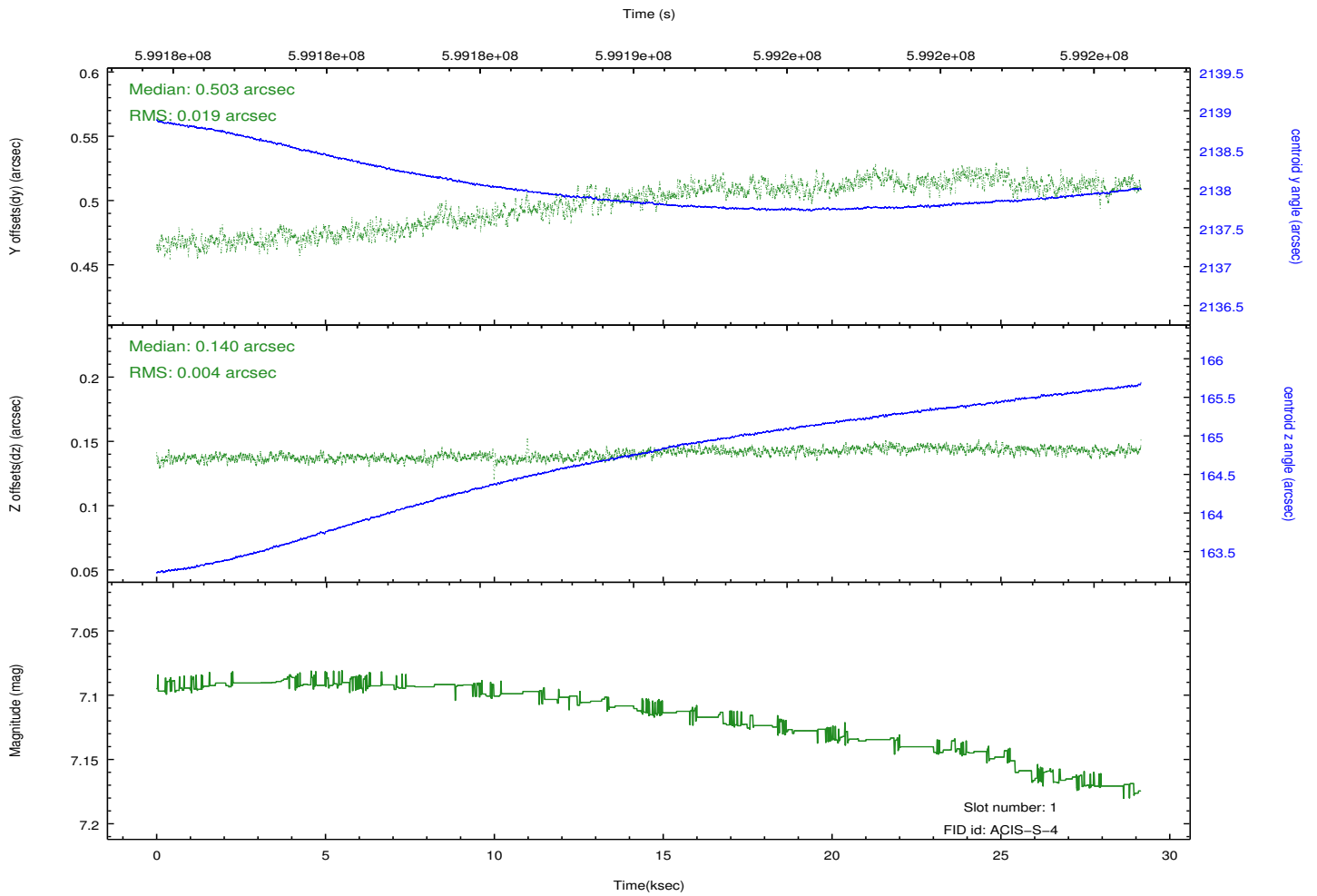
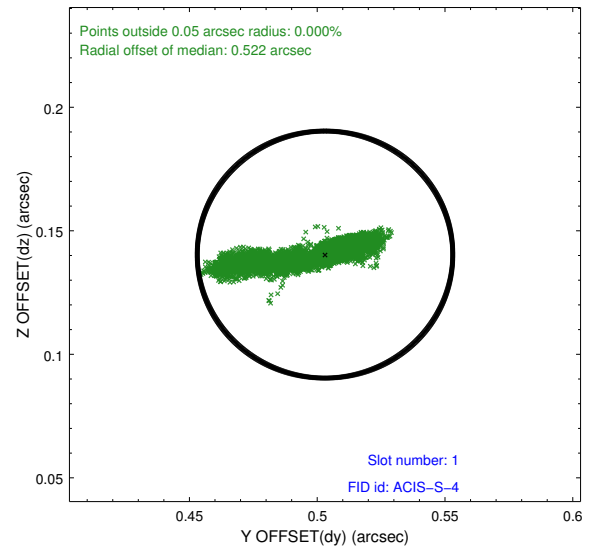
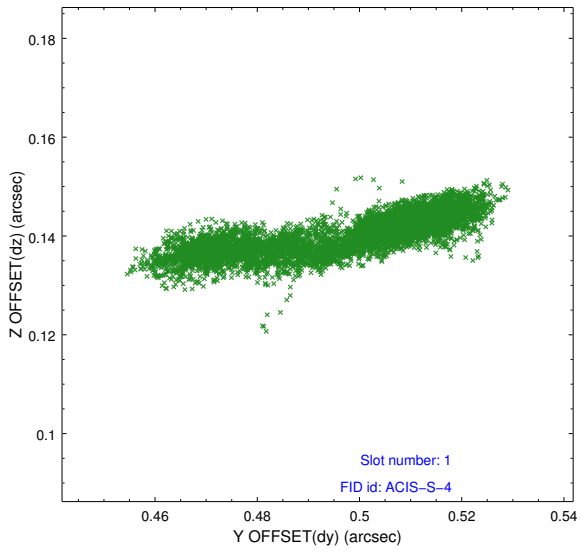


2.5 FID Slots

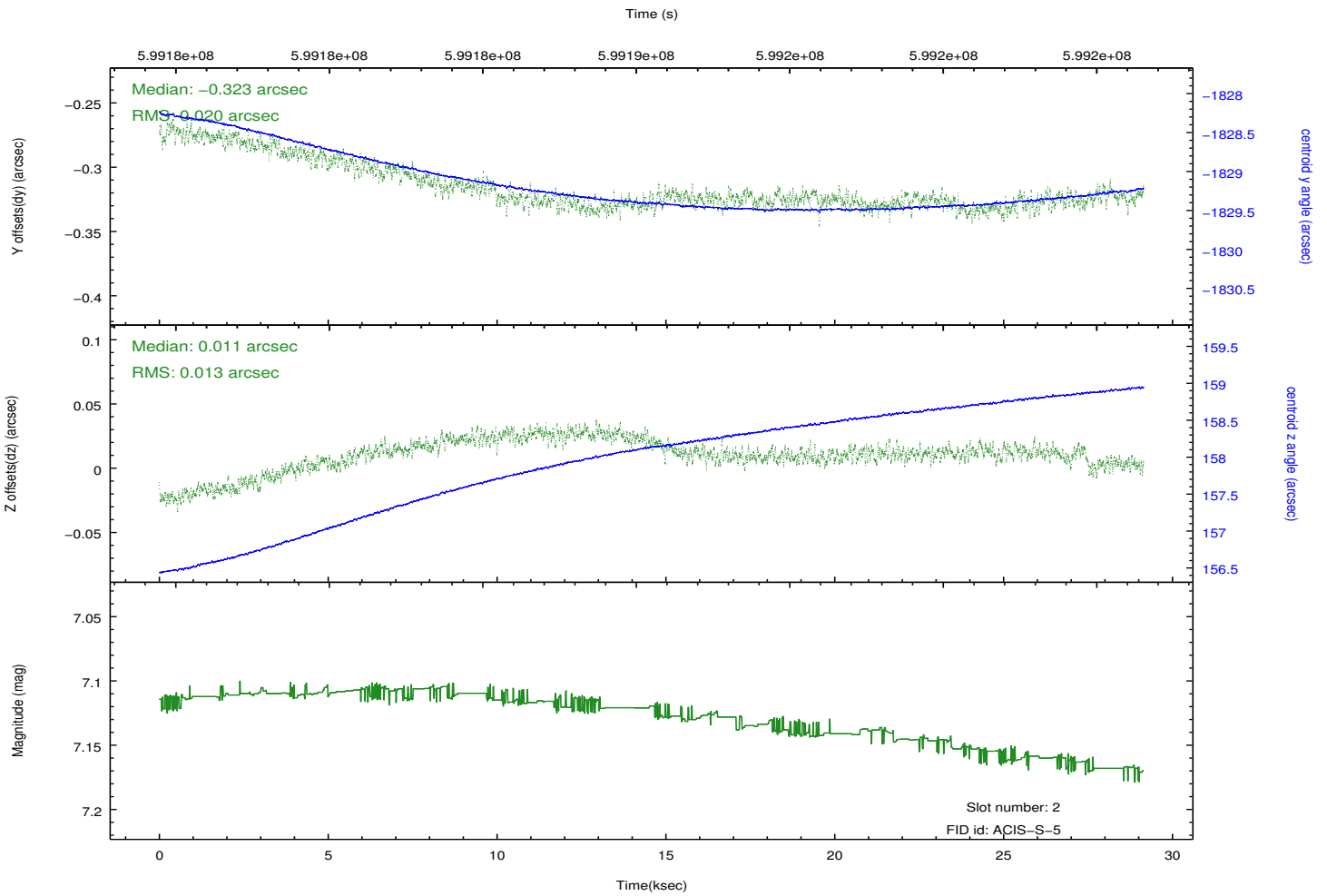
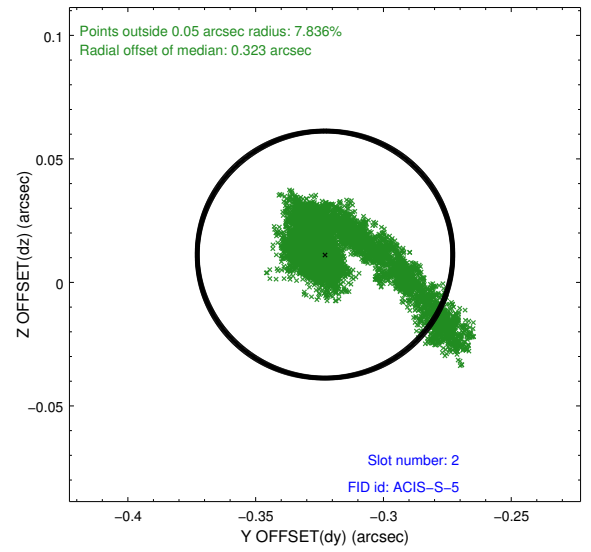
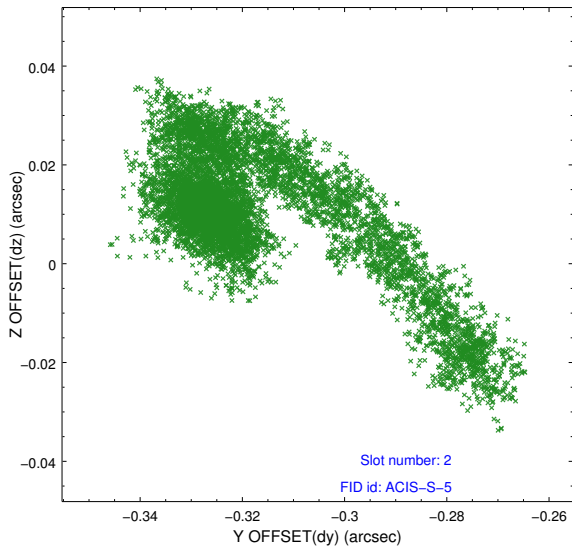
2.5.1 Slot 0



2.5.2 Slot 1



2.5.3 Slot 2



A Summary

A.1 Status

V&V Scientist	Beth Sundheim
V&V Date (YYYY-MM-DD)	2016.12.27
V&V Edition	1
V&V Disposition and Status	OK
V&V Charge Time	29.120001538038

A.2 Comments

One optional chip was dropped.