

# V&V Reference Report

## L2 ASCDS Version : 10.6

Observation 20128 - L2 Version 1  
Chandra X-Ray Center

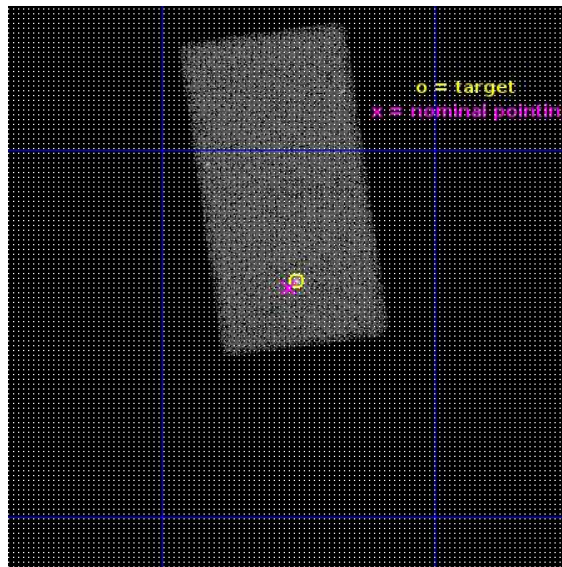
L2 Processing Date : Aug 6 2017

## Contents

<b>1</b>	<b>Front</b>	<b>2</b>
<b>2</b>	<b>OBI</b>	<b>3</b>
2.1	OBI . . . . .	3
2.1.1	Images . . . . .	3
2.1.2	Bias . . . . .	3
2.1.3	Parameters . . . . .	4
2.1.4	Events . . . . .	4
2.2	Compared Parameters . . . . .	5
2.3	Aspect . . . . .	6
2.4	Star Slots . . . . .	9
2.4.1	Slot 3 . . . . .	9
2.4.2	Slot 4 . . . . .	10
2.4.3	Slot 5 . . . . .	11
2.4.4	Slot 6 . . . . .	12
2.4.5	Slot 7 . . . . .	13
2.5	FID Slots . . . . .	14
2.5.1	Slot 0 . . . . .	14
2.5.2	Slot 1 . . . . .	15
2.5.3	Slot 2 . . . . .	16
<b>A</b>	<b>Summary</b>	<b>17</b>
A.1	Status . . . . .	17
A.2	Comments . . . . .	17

# 1 Front

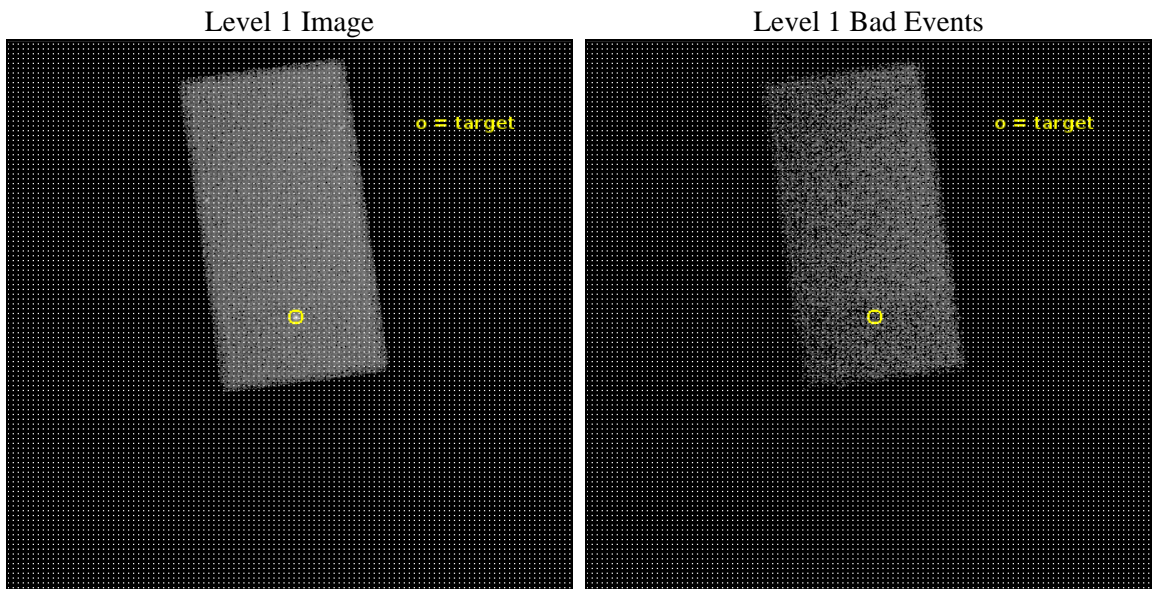
seq_num	703279	Sequence number
obs_id	20128	Observation id
title	Long-Term Multi-wavelength Monitoring of a Stellar Tidal Disruption at Only 90 Mpc	Proposal title
observer	Walter Maksym	Principal investigator
object	ASASSN-14li	Source name
dtcycle	0	&#160
cycle	P	events from which exps? Prim/Second/Both
ra_targ	192.063333	Observer's specified target RA [deg]
dec_targ	17.774028	Observer's specified target Dec [deg]
ra_nom	192.06653988746	Nominal RA [deg]
dec_nom	17.771018000239	Nominal Dec [deg]
roll_nom	262.15562484501	Nominal Roll [deg]
revision	1	Processing version of data
ontime	40074.895755529	Sum of GTIs [s]
liveltime	39007.64654603	Livetime [s]
ontime7	40074.895755529	Sum of GTIs [s]
l2events	81754	Number of level 2 events



## 2 OBI

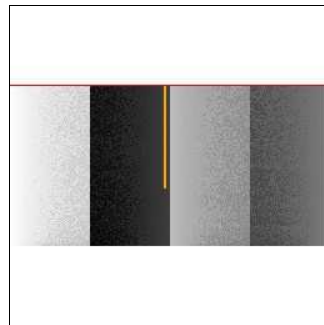
### 2.1 OBI

#### 2.1.1 Images



#### 2.1.2 Bias

Chip 7



### 2.1.3 Parameters

obi_num	0	Obi number	sched_exp_time	40000.000000	[s] Scheduled observation exposure time
ascdsver	10.6	Processing system revision	ontime	40074.895755529	Sum of GTIs [s]
caldbver	4.7.5	&#160	ontime7	40074.895755529	Sum of GTIs [s]
date	2017-08-06T13:55:51	Date and time of file creation	l1events	177801	Number of level 1 events
revision	1	Processing version of data			

### 2.1.4 Events

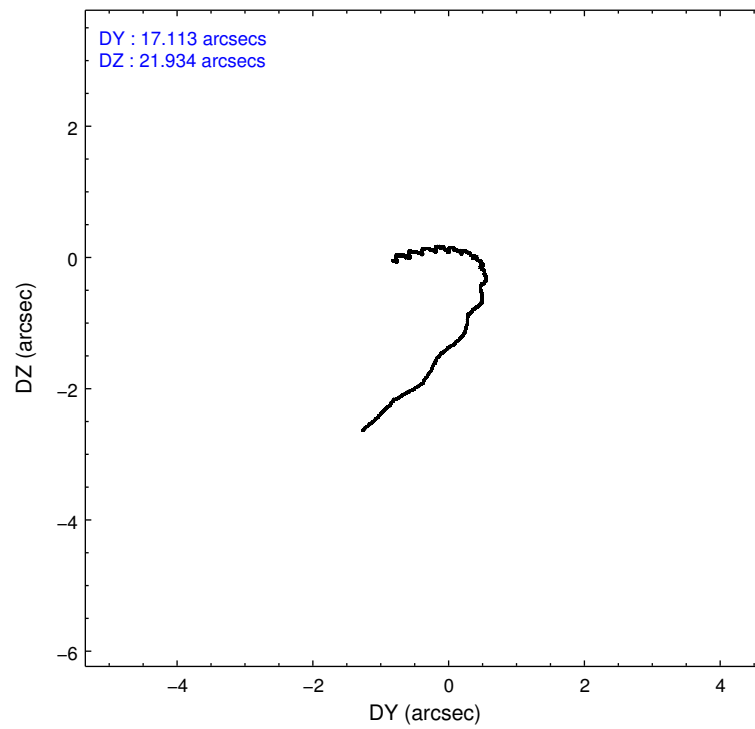
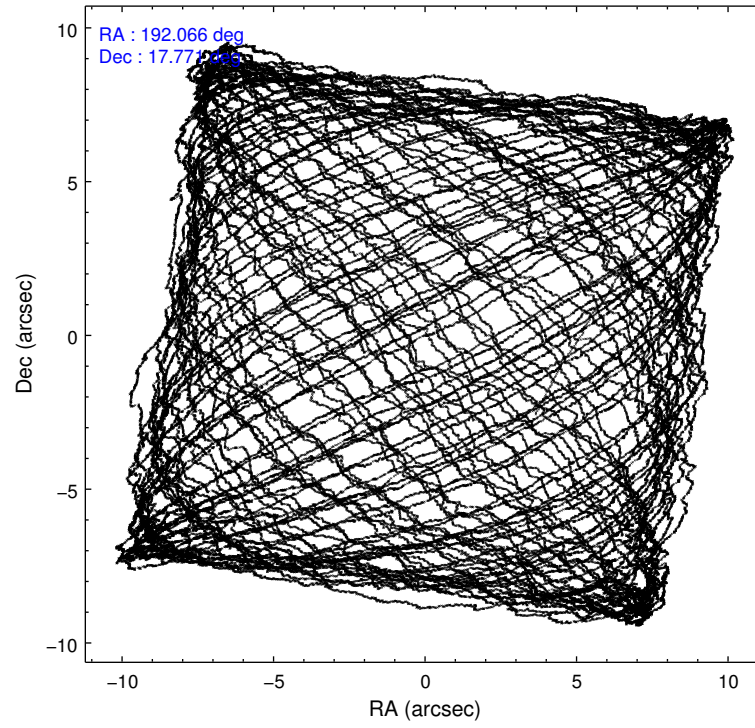
	<b>ccd 7</b>
level 1 events	177801
rejected events	93837
rejected %	52%

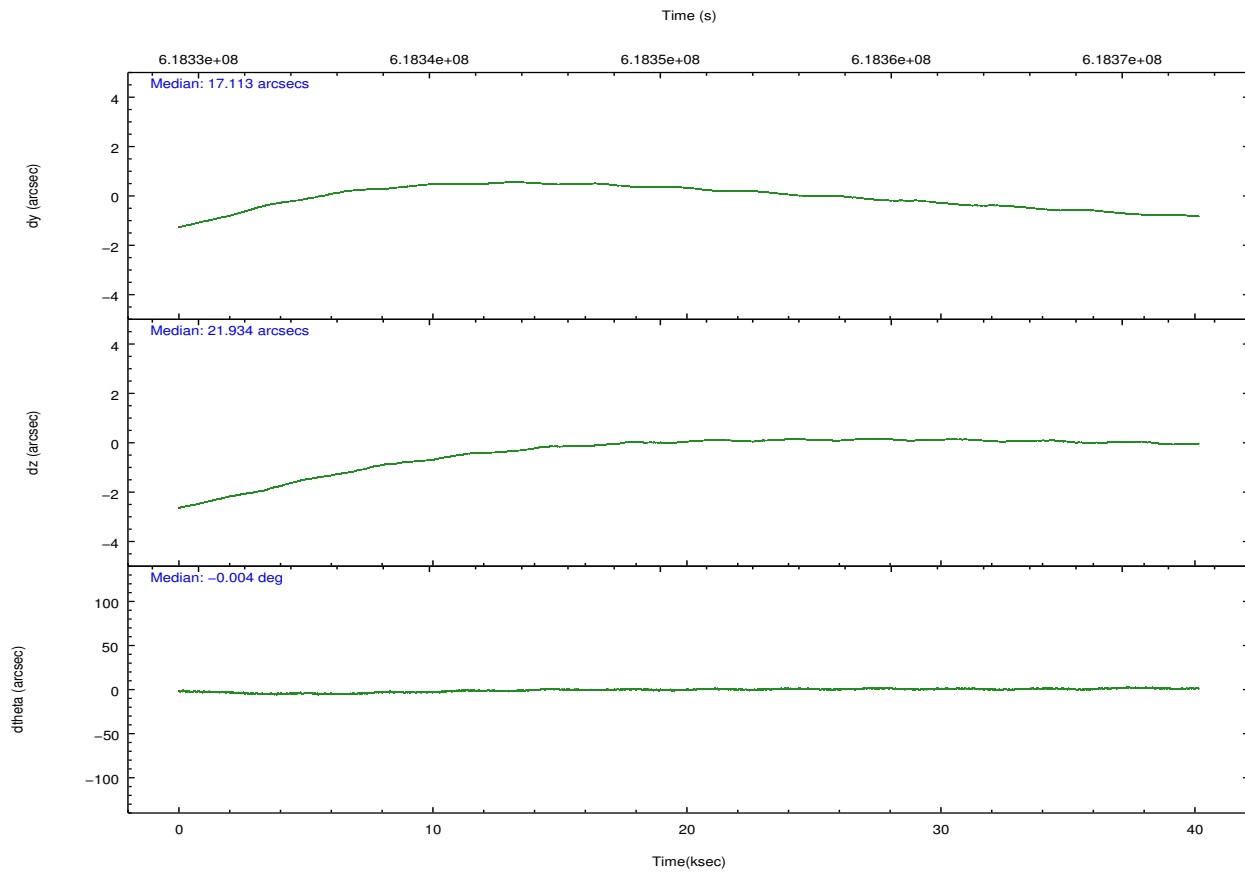
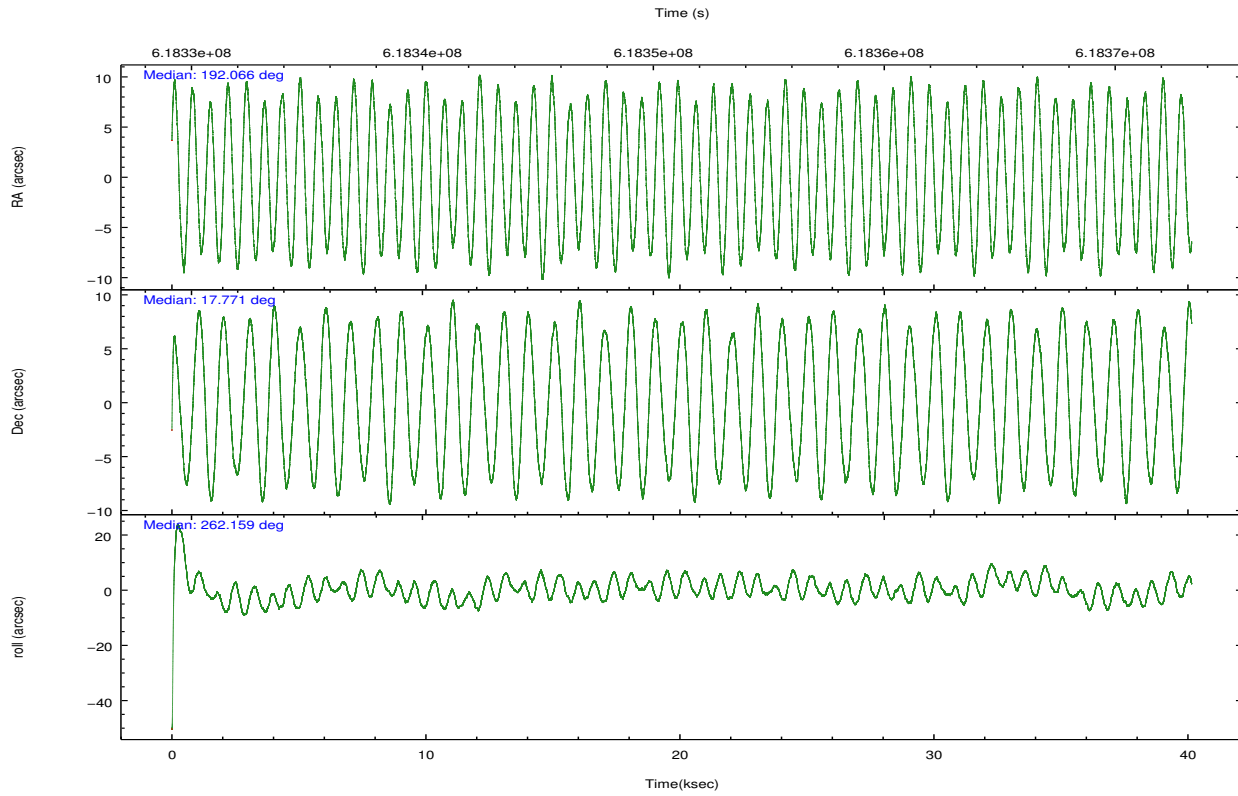
	<b>ccd 7</b>
grade 0 events	10160
	5%
grade 1 events	288
	0%
grade 2 events	17754
	9%
grade 3 events	7911
	4%
grade 4 events	7906
	4%
grade 5 events	18471
	10%
grade 6 events	40243
	22%
grade 7 events	75068
	42%

## 2.2 Compared Parameters

Parameter	Planned	Actual	Parameter	Planned	Actual
Instrument	ACIS	ACIS	Obspar format version number	7	7
Detector	ACIS-7	ACIS-7	Obspar file type	PREDICTED	ACTUAL
Grating	NONE	NONE	Obspar update status	NONE	UPDATED
Data mode	VFAINT	VFAINT	Number of optional ACIS chips dropped	0	0
Observation mode	POINTING	POINTING	On-chip summing requested	N	N
[deg] Pointing RA	192.055314	192.0665398874643	Subarray requested	CUSTOM	1/2
[deg] Pointing Dec	17.796293	17.77101800023937	Subarray start row	257	257
[deg] Pointing Roll	262.002449	262.1556248450127	Subarray row count	512	512
[mm] SIM focus pos	-0.684267	-0.6828225247311905	Alternating exposures requested	N	N
[mm] SIM defocus	0	0.001444936568705701	[s] Primary exposure time	0.000000	1.5
[mm] SIM translation stage pos	-190.132523	-190.1400660498719			
[mm] SIM translation stage offset	0	0.00754346686406393			
[s] Observation start time (MET)	618331304.184000	618329845.11318			
Observation start date	2017-08-05T14:40:35	2017-08-05T14:17:25			
[s] Observation end time (MET)	618371304.184000	618371817.32814			
Observation end date	2017-08-06T01:47:15	2017-08-06T01:56:57			
Read mode	TIMED	TIMED			

## 2.3 Aspect





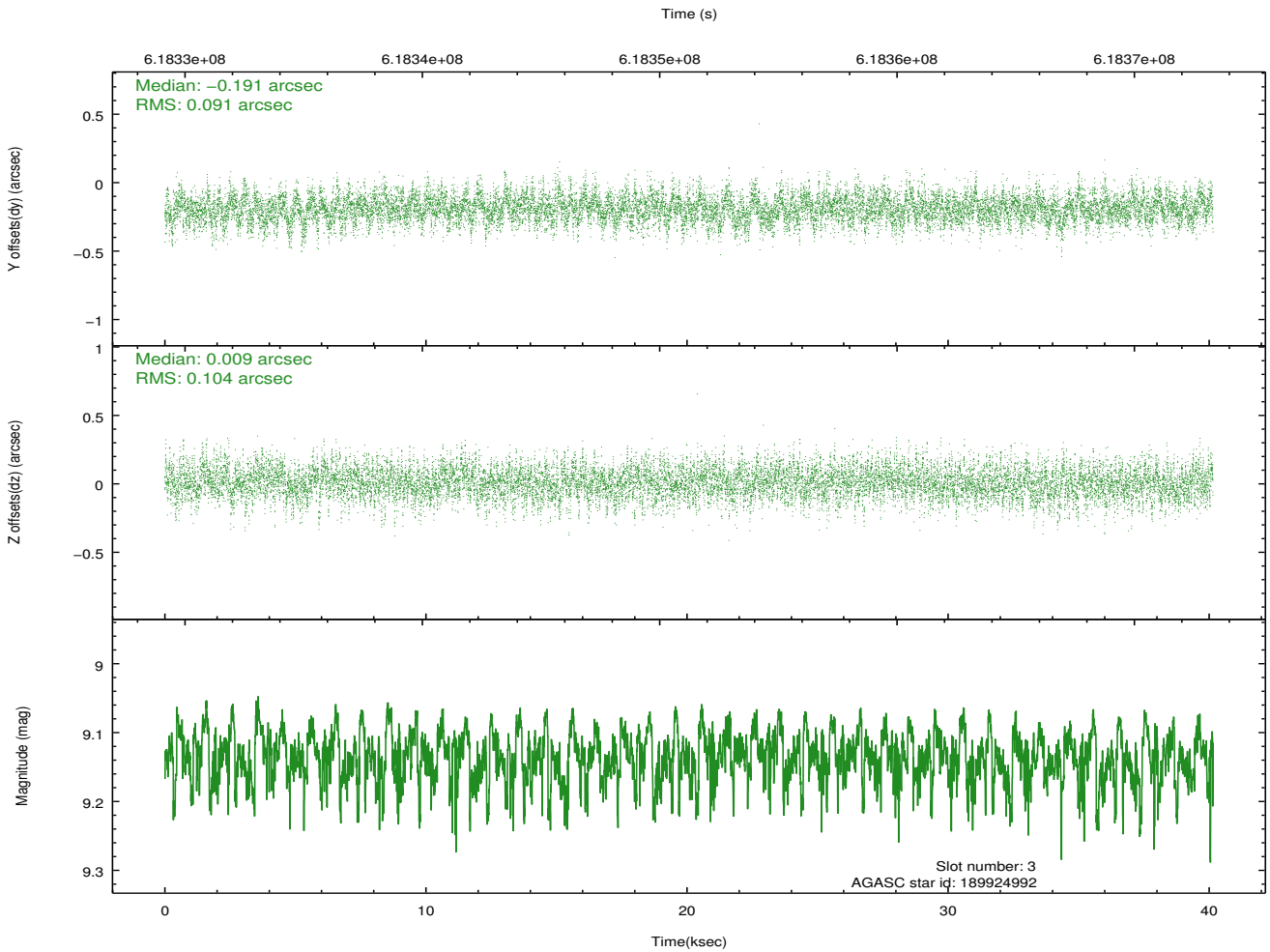
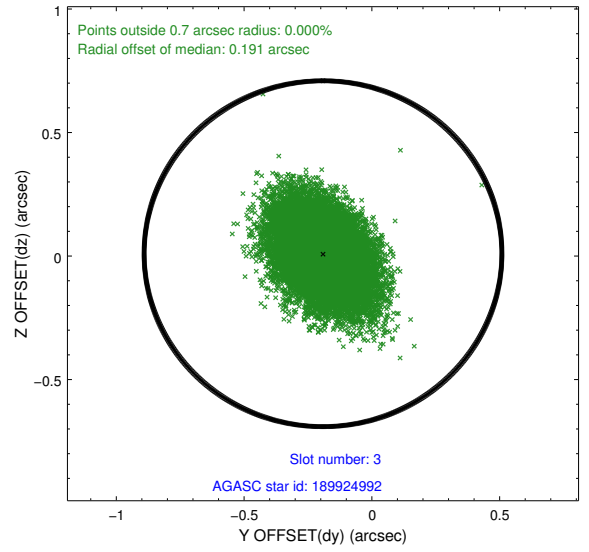
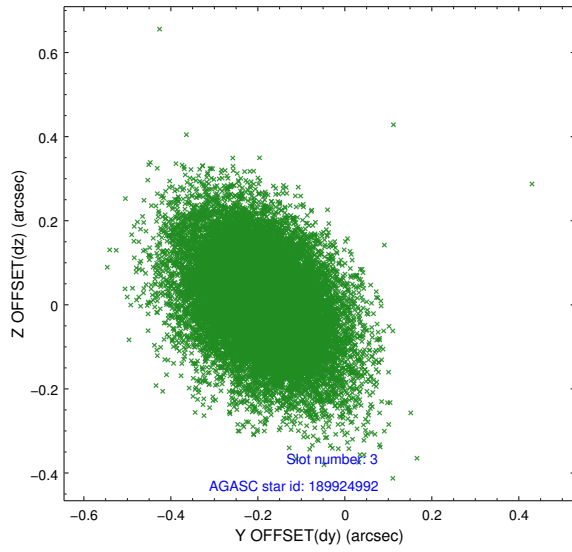
### Slot Statistics

slot	status	used	id	mag	n_pts	med_dy	med_dz	dr1	dr2	ra	dec	mean_y	mean_z
0	FID		ACIS-S-2	6.95	9792	-0.186	-0.100	0.019	0.040	0.000000	0.000000	-770.23	-1743.19
1	FID		ACIS-S-4	7.06	9793	0.440	0.117	0.022	0.031	0.000000	0.000000	2143.65	165.52
2	FID		ACIS-S-5	7.06	9792	-0.284	-0.008	0.027	0.037	0.000000	0.000000	-1823.16	159.04
3	GUIDE	used	189924992	9.13	19564	-0.191	0.009	0.145	0.247	192.414765	17.361281	1378.63	1441.36
4	GUIDE	used	190319408	8.63	19574	-0.015	0.214	0.141	0.241	192.447147	18.342893	-2136.15	1052.62
5	GUIDE	used	190321992	9.34	19554	-0.271	-0.041	0.189	0.312	192.558931	17.650526	278.33	1781.82
6	GUIDE	used	190322864	8.18	19578	0.356	-0.123	0.132	0.224	192.118474	17.579756	742.36	323.15
7	GUIDE	used	190323712	9.18	19569	0.124	-0.055	0.153	0.268	192.191806	17.550786	811.30	587.64

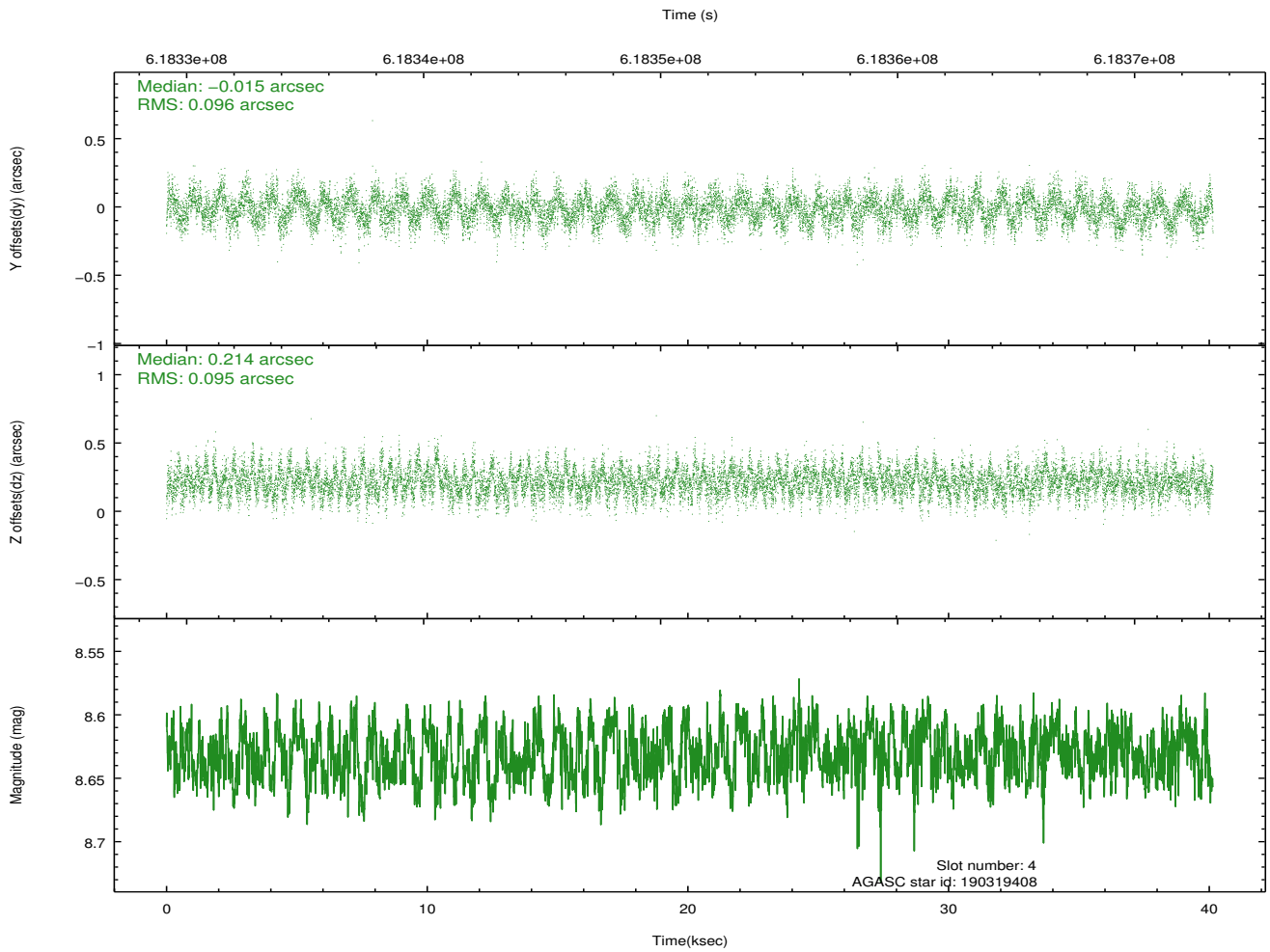
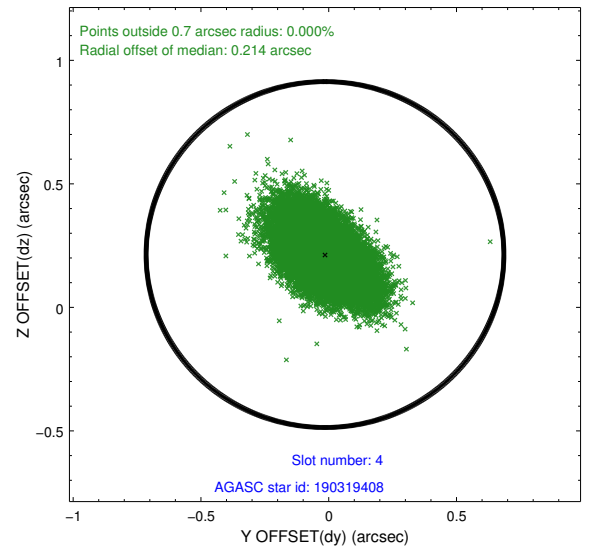
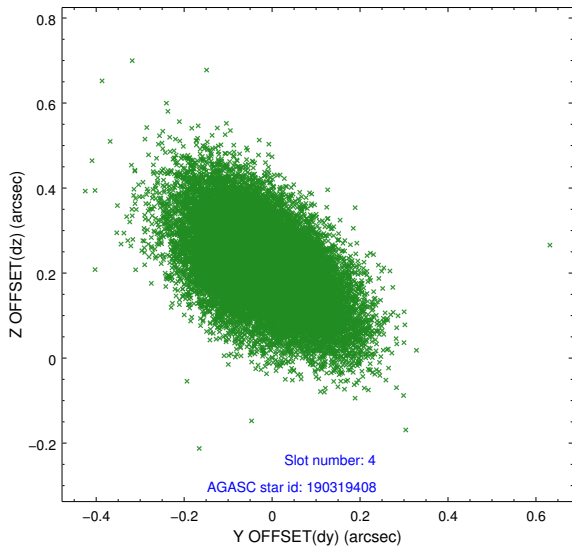
∞

## 2.4 Star Slots

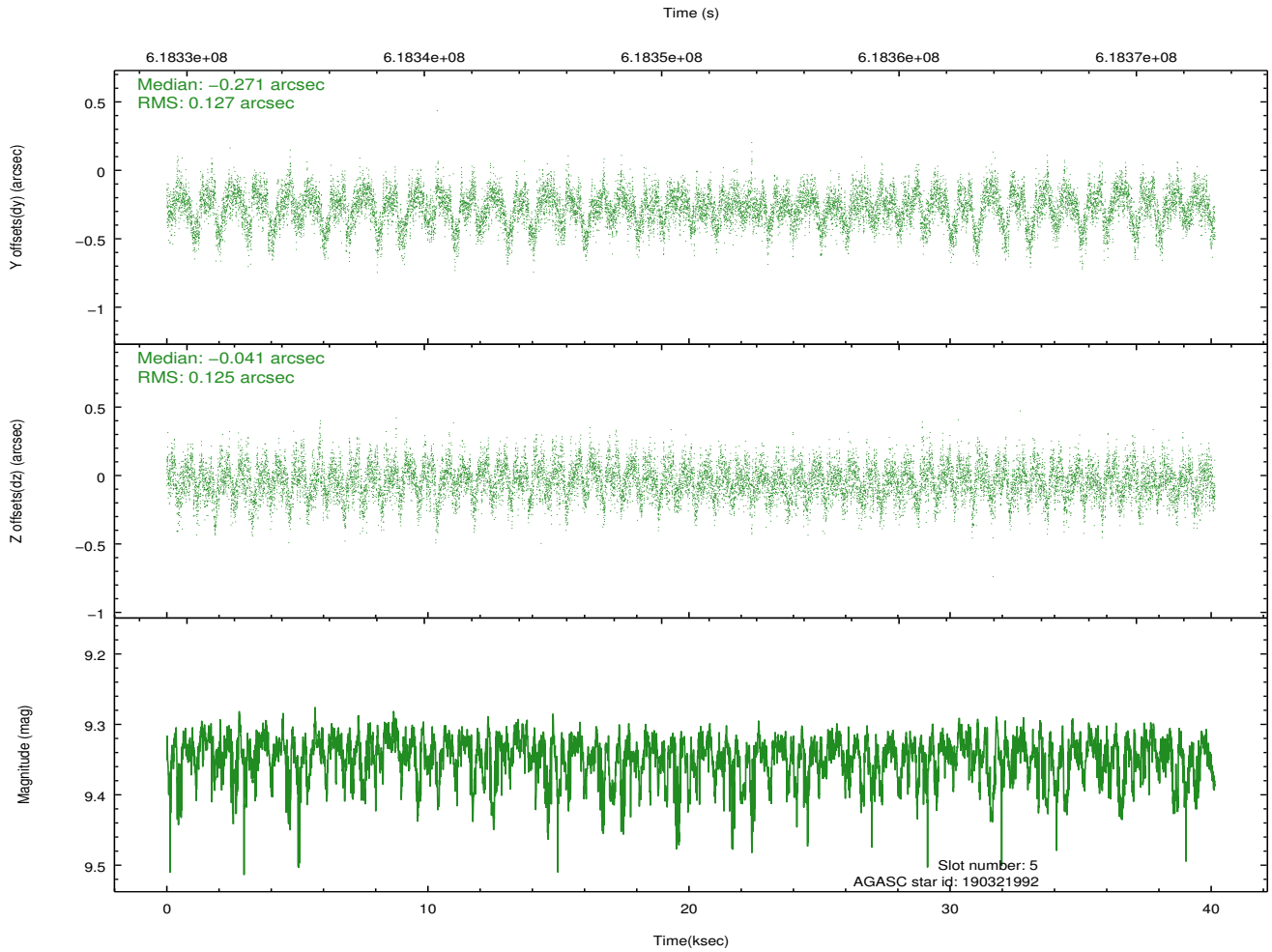
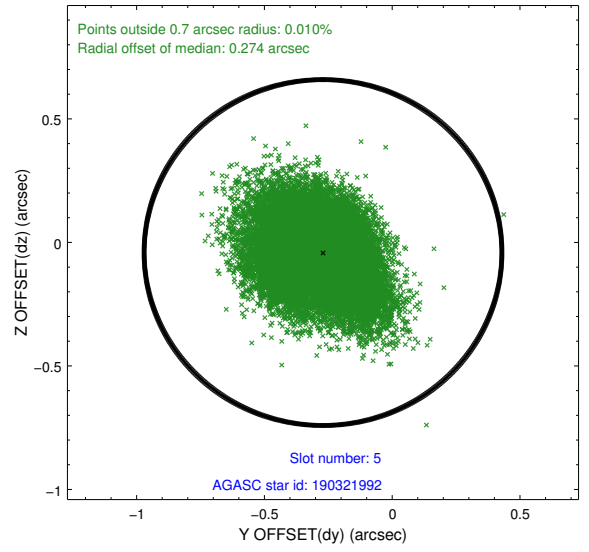
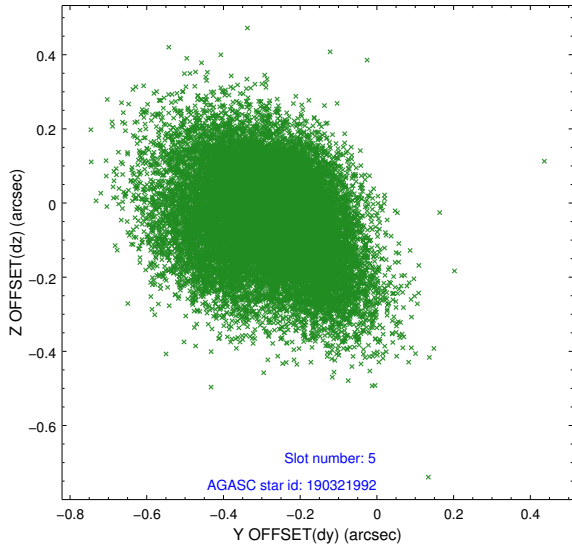
### 2.4.1 Slot 3



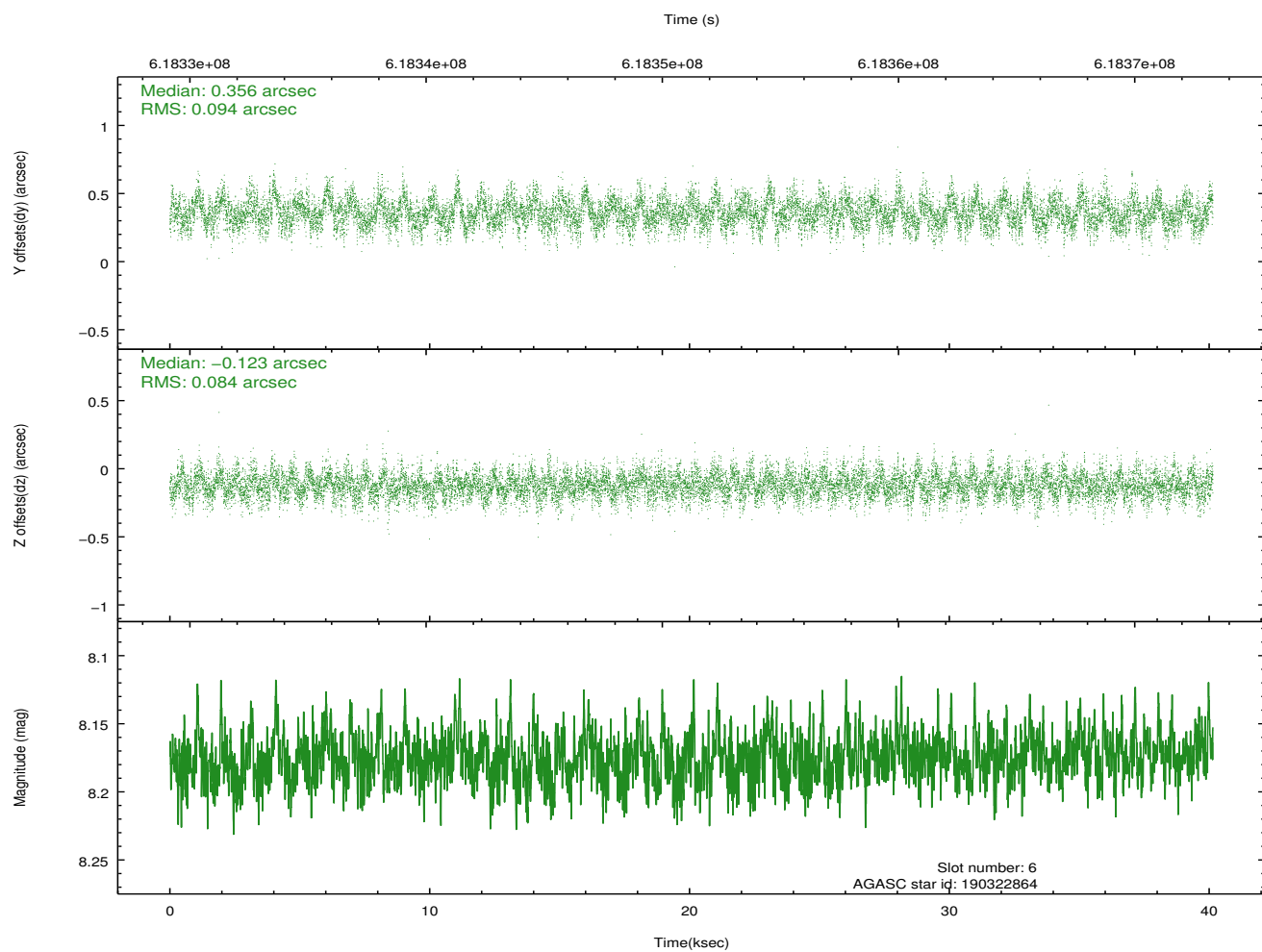
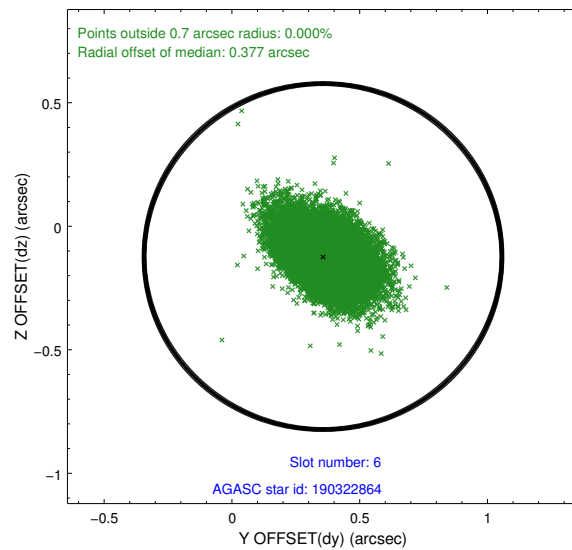
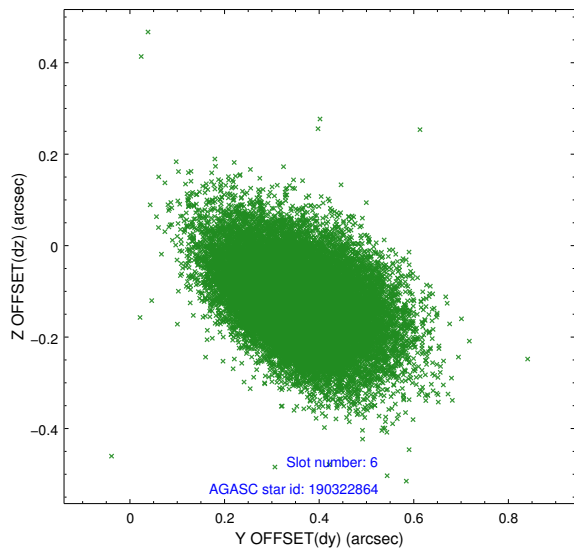
### 2.4.2 Slot 4



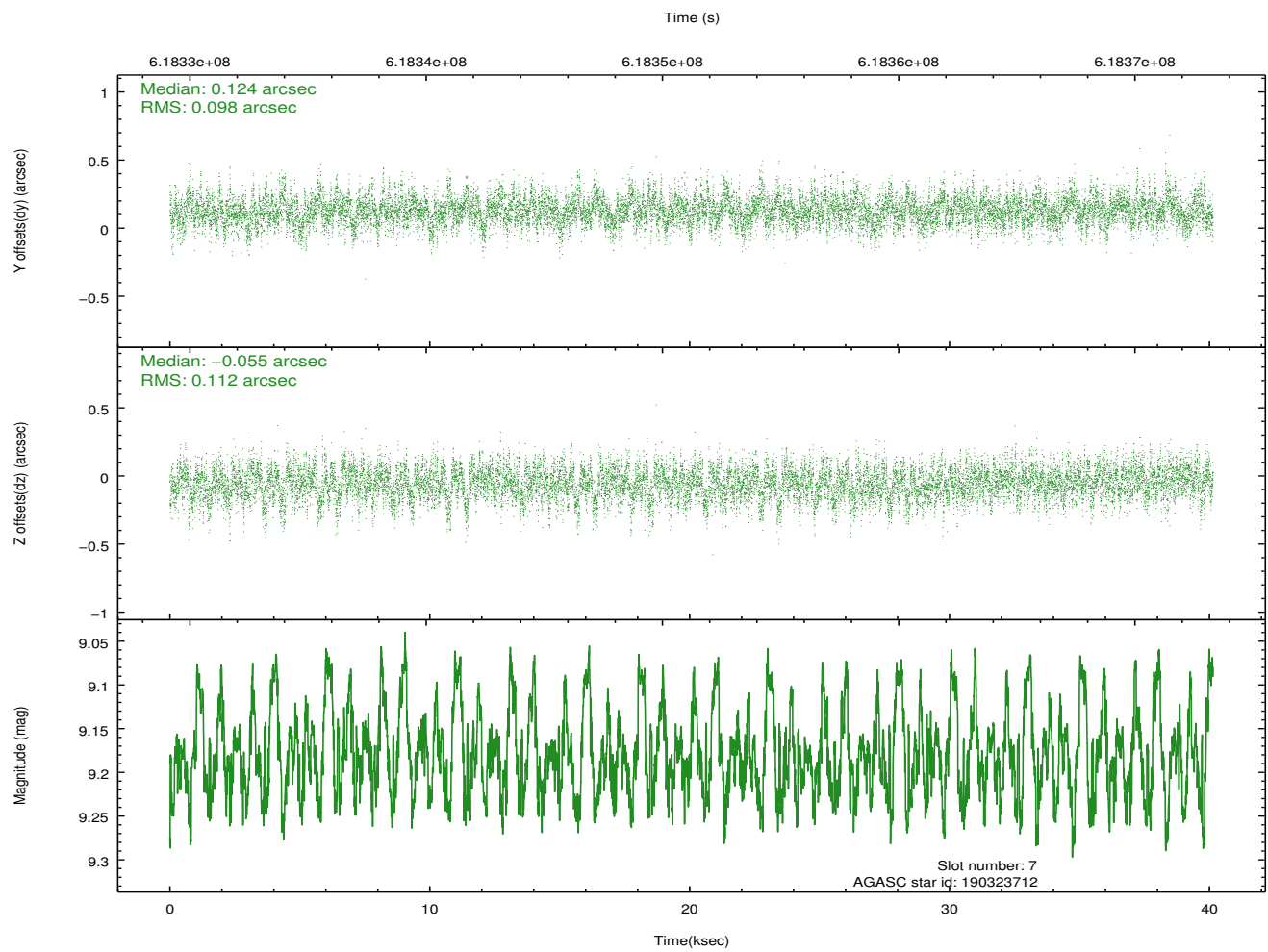
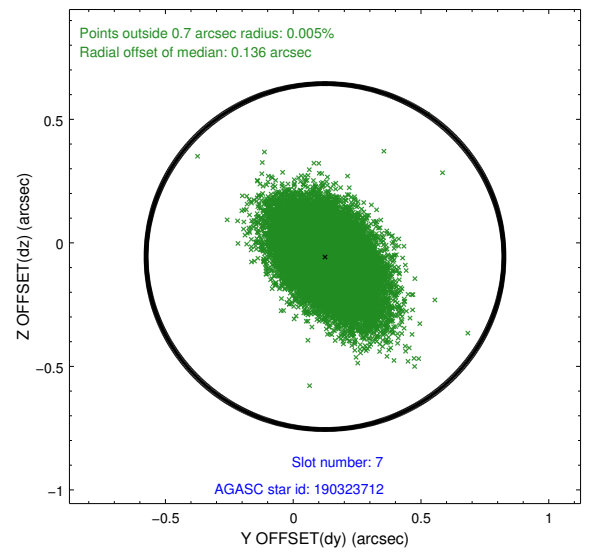
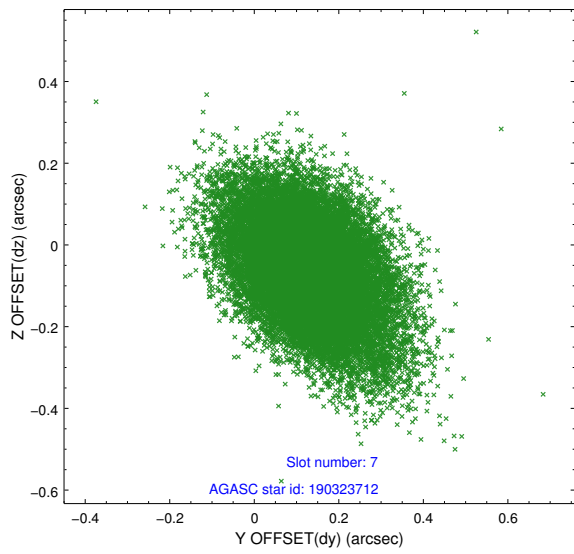
### 2.4.3 Slot 5



## 2.4.4 Slot 6

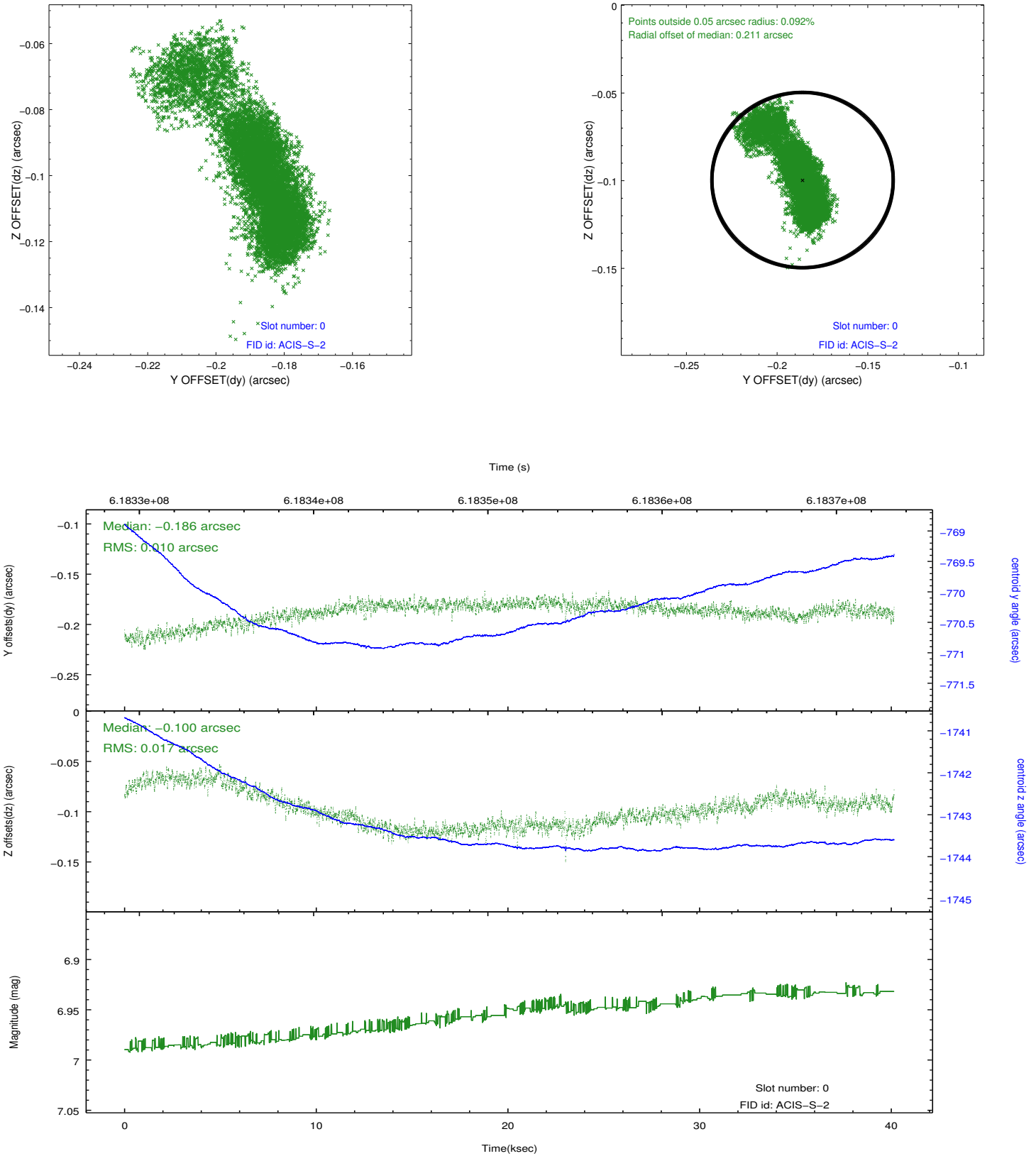


## 2.4.5 Slot 7

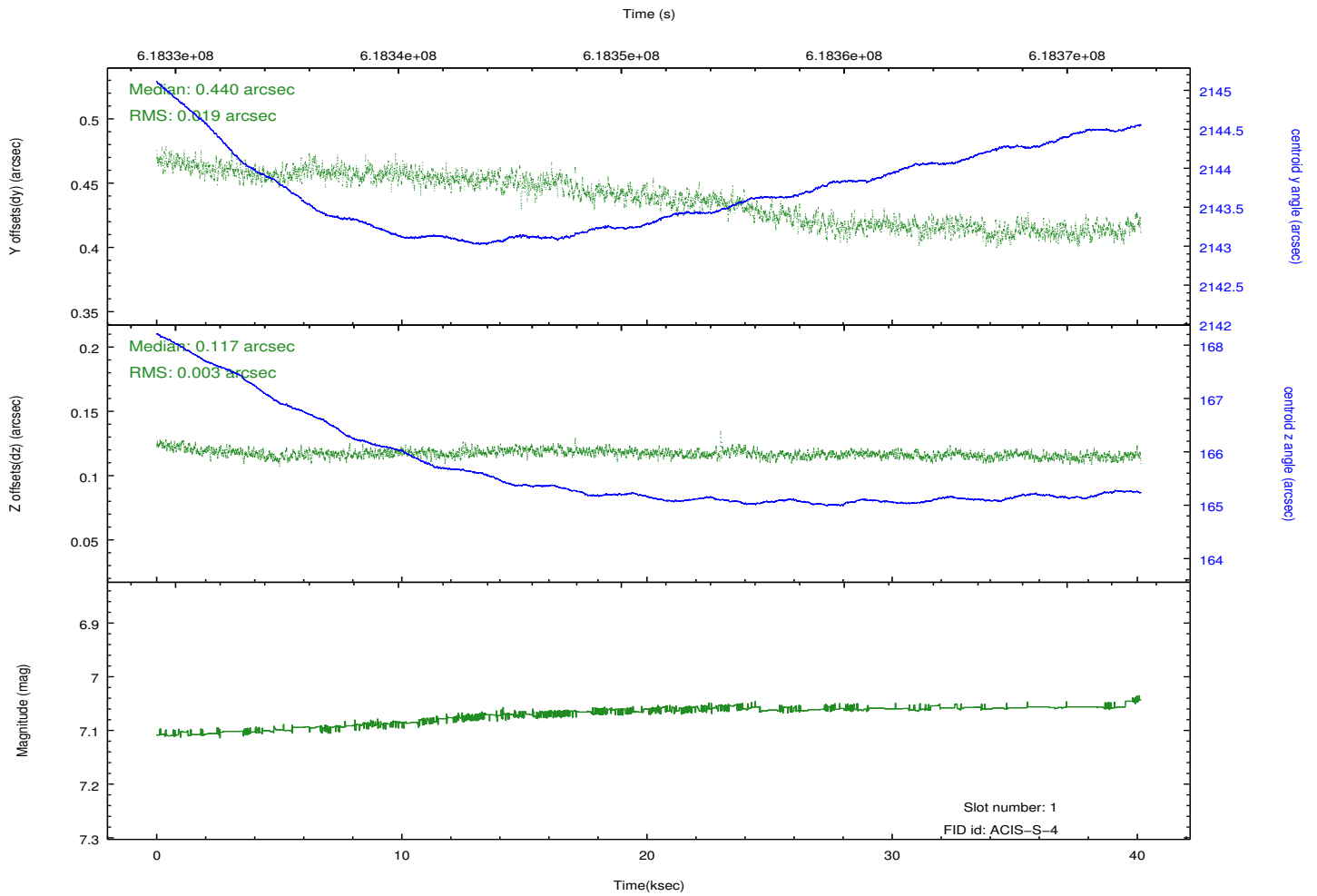
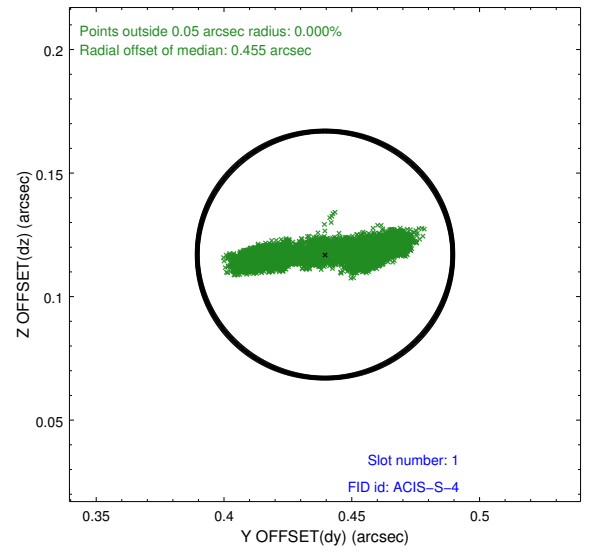
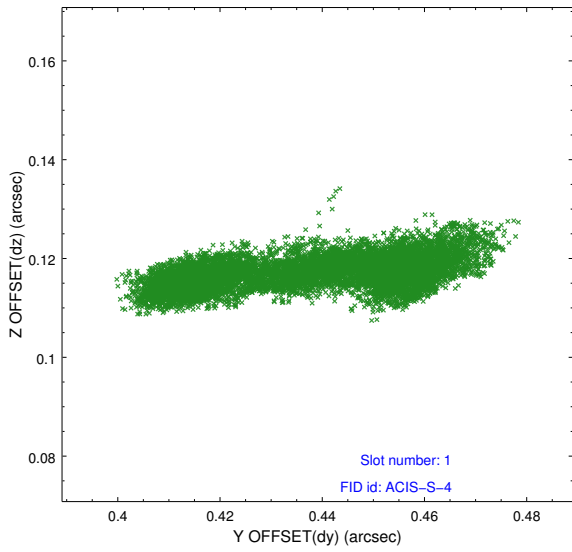


## 2.5 FID Slots

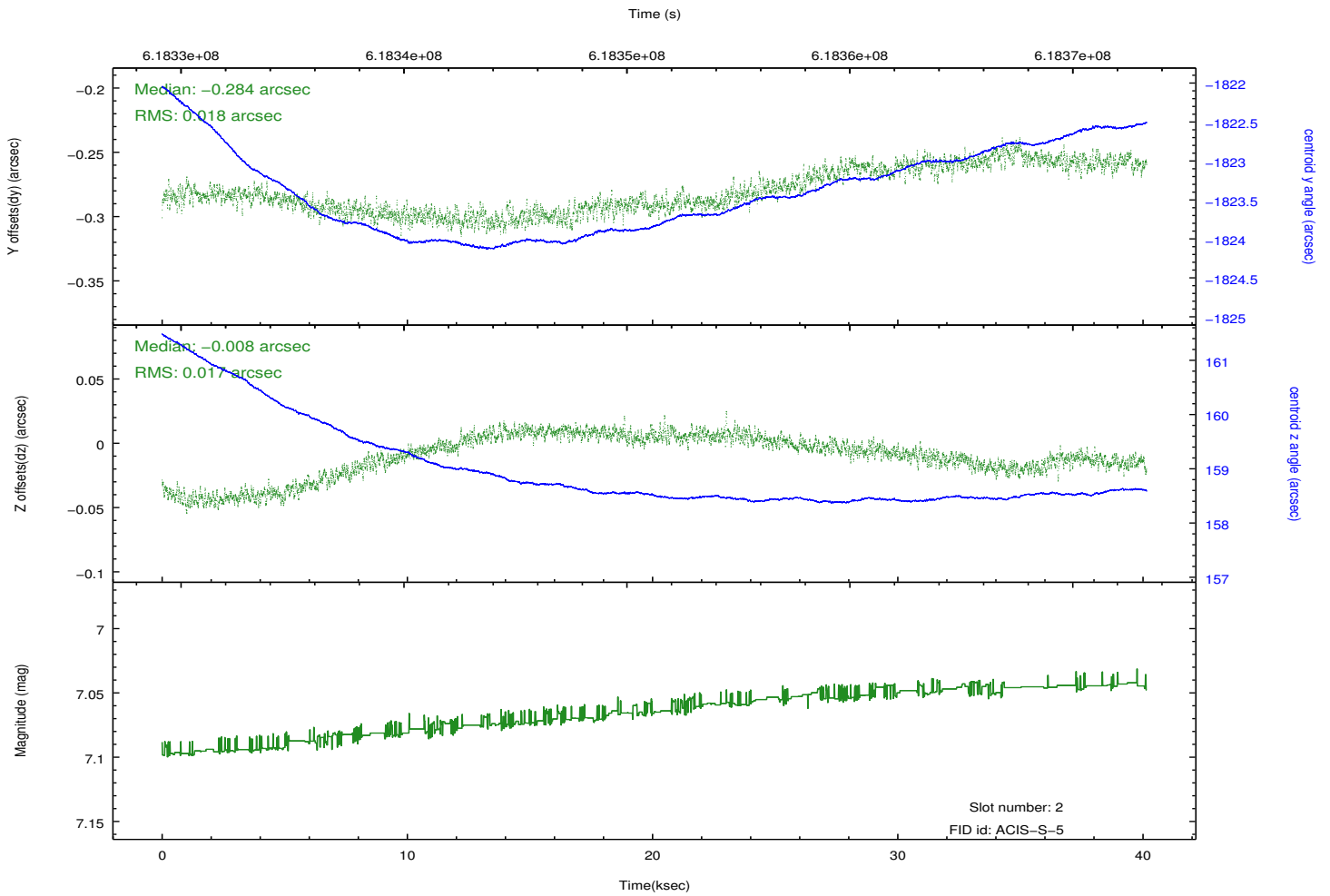
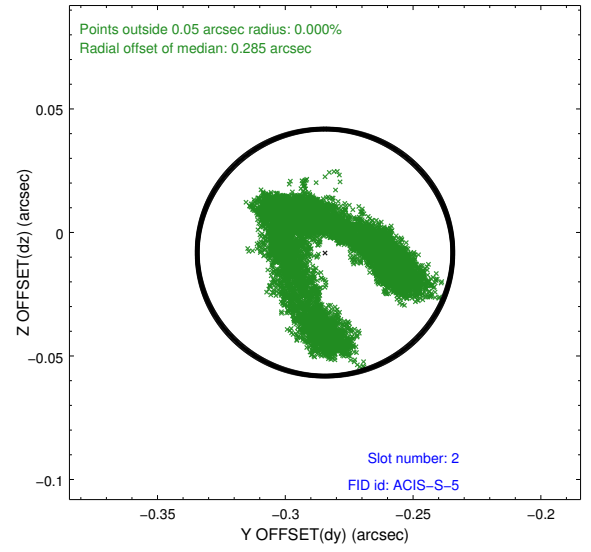
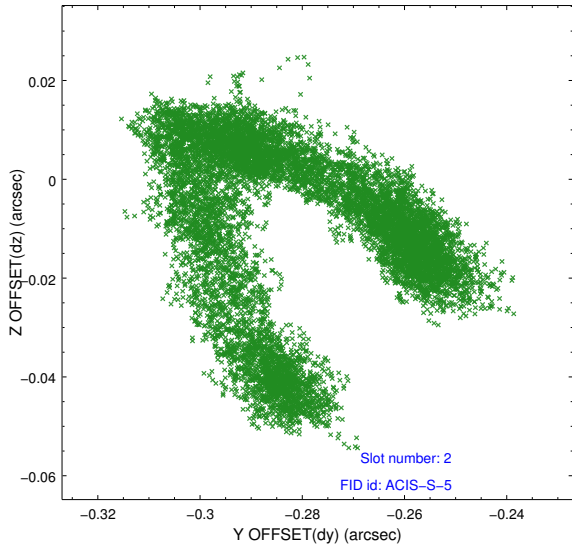
### 2.5.1 Slot 0



## 2.5.2 Slot 1



### 2.5.3 Slot 2



# A Summary

## A.1 Status

V&V Scientist	Beth Sundheim
V&V Date (YYYY-MM-DD)	2017.08.06
V&V Edition	1
V&V Disposition and Status	OK
V&V Charge Time	40.074895755529

## A.2 Comments

Joint proposal with XMM and NRAO.