

V&V Reference Report

L2 ASCDS Version : 10.6

Observation 20948 - L2 Version 1
Chandra X-Ray Center

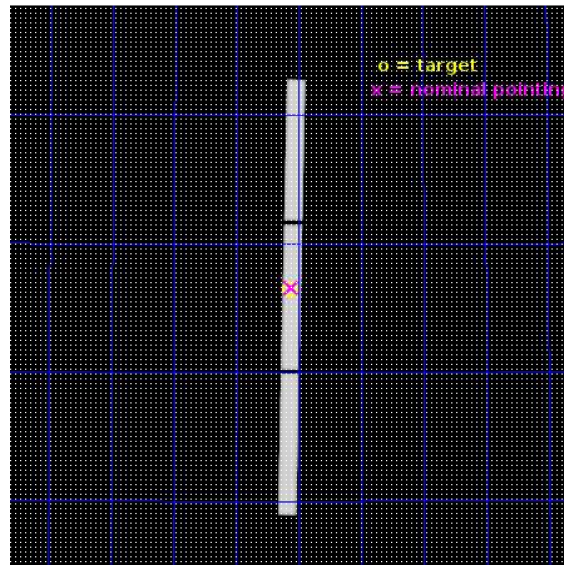
L2 Processing Date : Feb 2 2018

Contents

1	Front	2
2	OBI	3
2.1	OBI	3
2.1.1	Images	3
2.1.2	Parameters	4
2.1.3	Events	4
2.2	Compared Parameters	5
2.3	Aspect	6
2.4	Star Slots	9
2.4.1	Slot 3	9
2.4.2	Slot 4	10
2.4.3	Slot 5	11
2.4.4	Slot 6	12
2.4.5	Slot 7	13
2.5	FID Slots	14
2.5.1	Slot 0	14
2.5.2	Slot 1	15
2.5.3	Slot 2	16
3	Gratings	17
3.1	LETG Arm	17
A	Summary	19
A.1	Status	19
A.2	Comments	19

1 Front

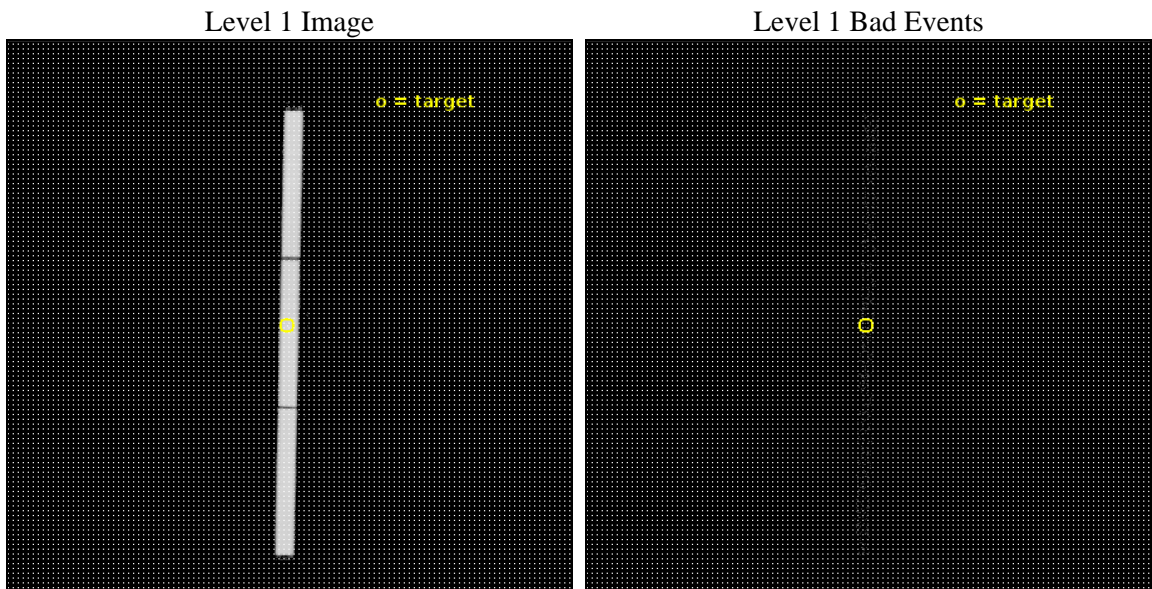
seq_num	703315	Sequence number
obs_id	20948	Observation id
title	Chandra observations of a unique X-ray WHIM absorber towards PG 1116+215	Proposal title
observer	Massimiliano Bonamente	Principal investigator
object	PG 1116+215	Source name
ra_targ	169.78625	Observer's specified target RA [deg]
dec_targ	21.321667	Observer's specified target Dec [deg]
ra_nom	169.7794704532	Nominal RA [deg]
dec_nom	21.329883749117	Nominal Dec [deg]
roll_nom	91.069812946906	Nominal Roll [deg]
revision	1	Processing version of data
ontime	23176.276365161	[s]
livetime	22957.868766978	Ontime multiplied by DTCOR
l2events	1959613	Number of level 2 events



2 OBI

2.1 OBI

2.1.1 Images



2.1.2 Parameters

obi_num	0	Obi number	sched_exp_time	23000.000000	[s] Scheduled observation exposure time
ascdsver	10.6	Processing system revision	ontime	23176.276365161	[s]
caldsver	4.7.7	 	l1events	2517772	Number of level 1 events
date	2018-02-02T14:10:14	Date and time of file creation	tgmethod	TGDETECT	Method used to create src1a file
revision	1	Processing version of data	zo_pos	(32592.81, 32539.01)	src1a sky pixel position

2.1.3 Events

Level 1 Events

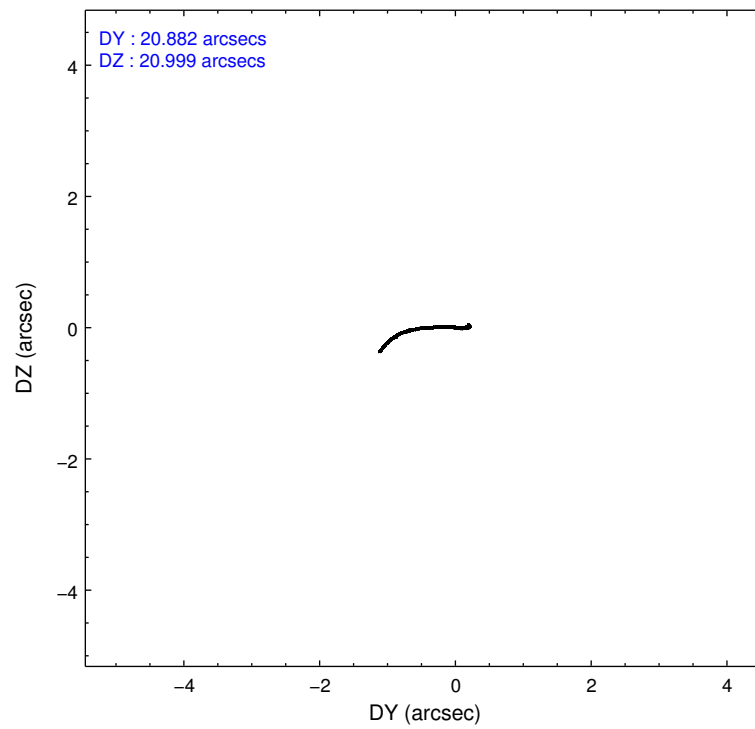
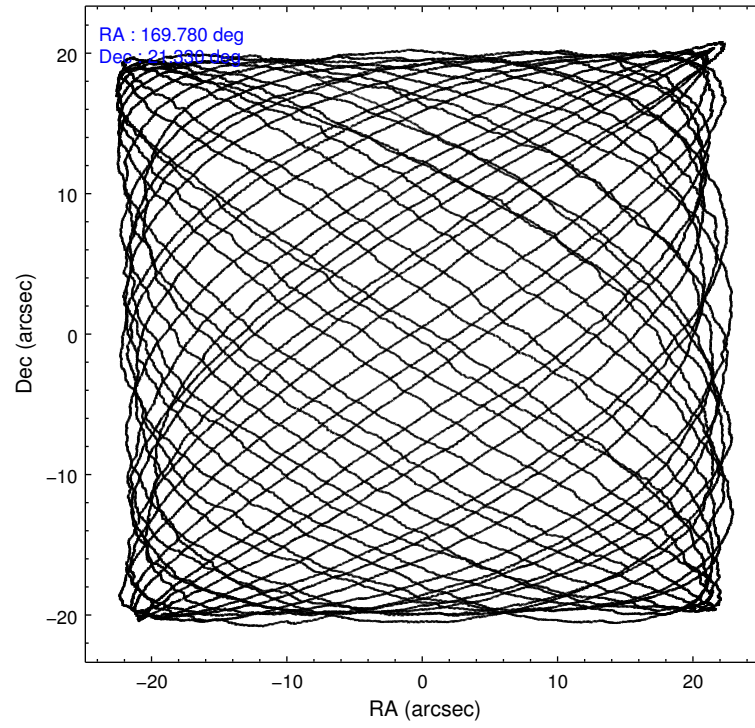
	segment 1	segment 2	segment 3
level 1 events	838434	842115	837223
rejected events	30316	30387	30414
rejected %	3%	3%	3%

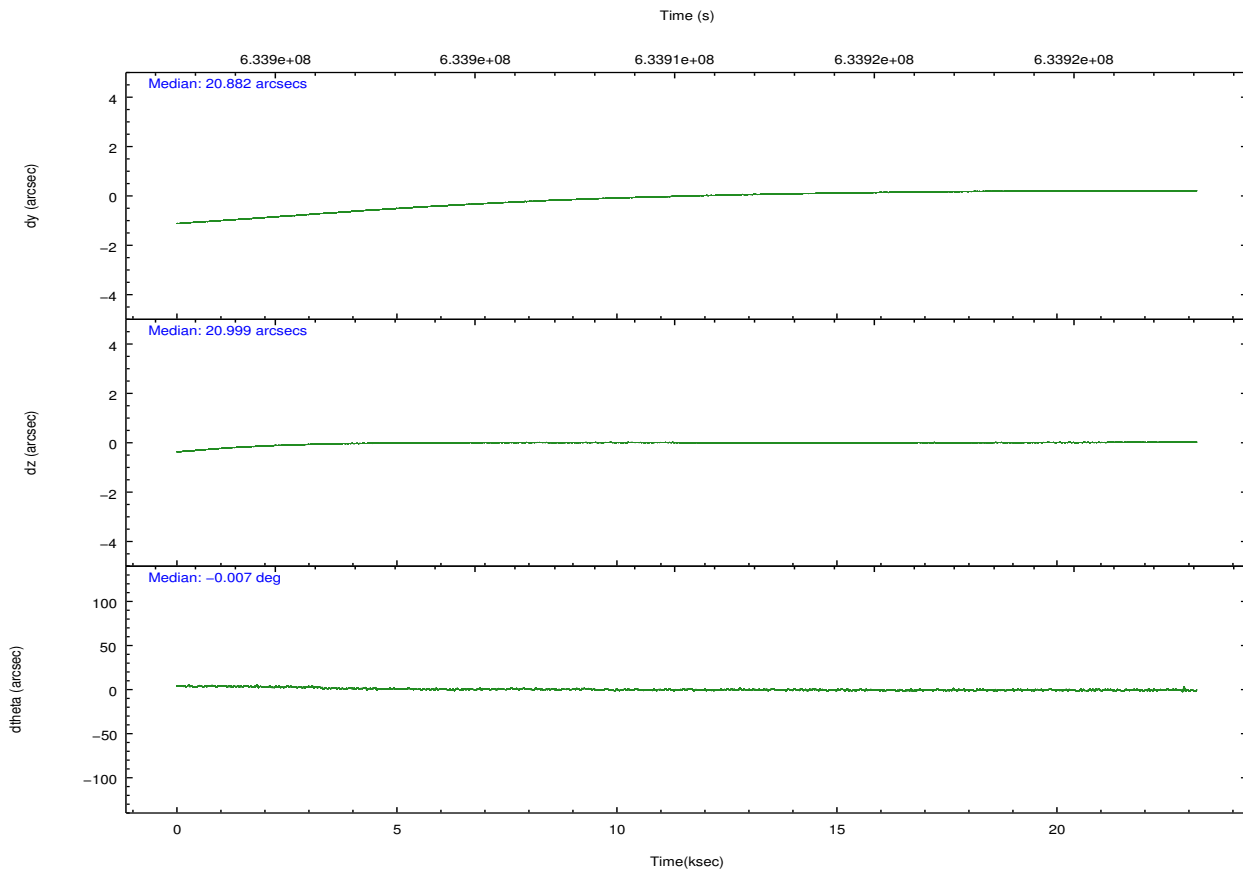
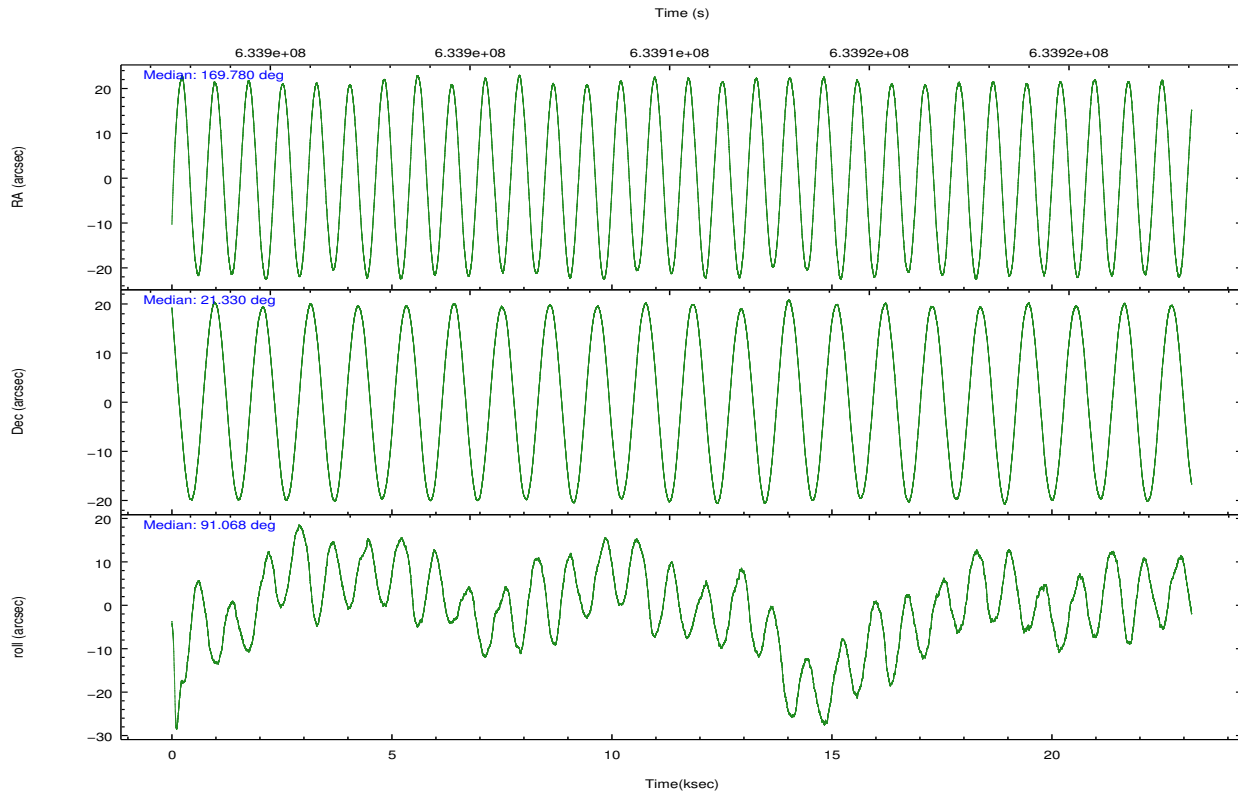
2.2 Compared Parameters

Parameter	Planned	Actual
Instrument	HRC	HRC
Detector	HRC-S	HRC-S
Grating	LETG	LETG
Data mode	OBSERVING	OBSERVING
Observation mode	POINTING	POINTING
[deg] Pointing RA	169.796726	169.7794704531993
[deg] Pointing Dec	21.305907	21.32988374911721
[deg] Pointing Roll	90.996189	91.06981294690618
[mm] SIM focus pos	-1.429586	-1.428180813131781
[mm] SIM defocus	0.1037507710433287	0.1051558262725154
[mm] SIM translation stage pos	250.455976	250.466033080201
[mm] SIM translation stage offset	0	-0.01005468664627074
[s] Observation start time (MET)	633898891.184000	633897870.43863
Observation start date	2018-02-01T19:00:22	2018-02-01T18:44:30
[s] Observation end time (MET)	633921891.184000	633922598.5650899
Observation end date	2018-02-02T01:23:42	2018-02-02T01:36:38

Parameter	Planned	Actual
Obspar format version number	7	7
Obspar file type	PREDICTED	ACTUAL
Obspar update status	NONE	UPDATED

2.3 Aspect



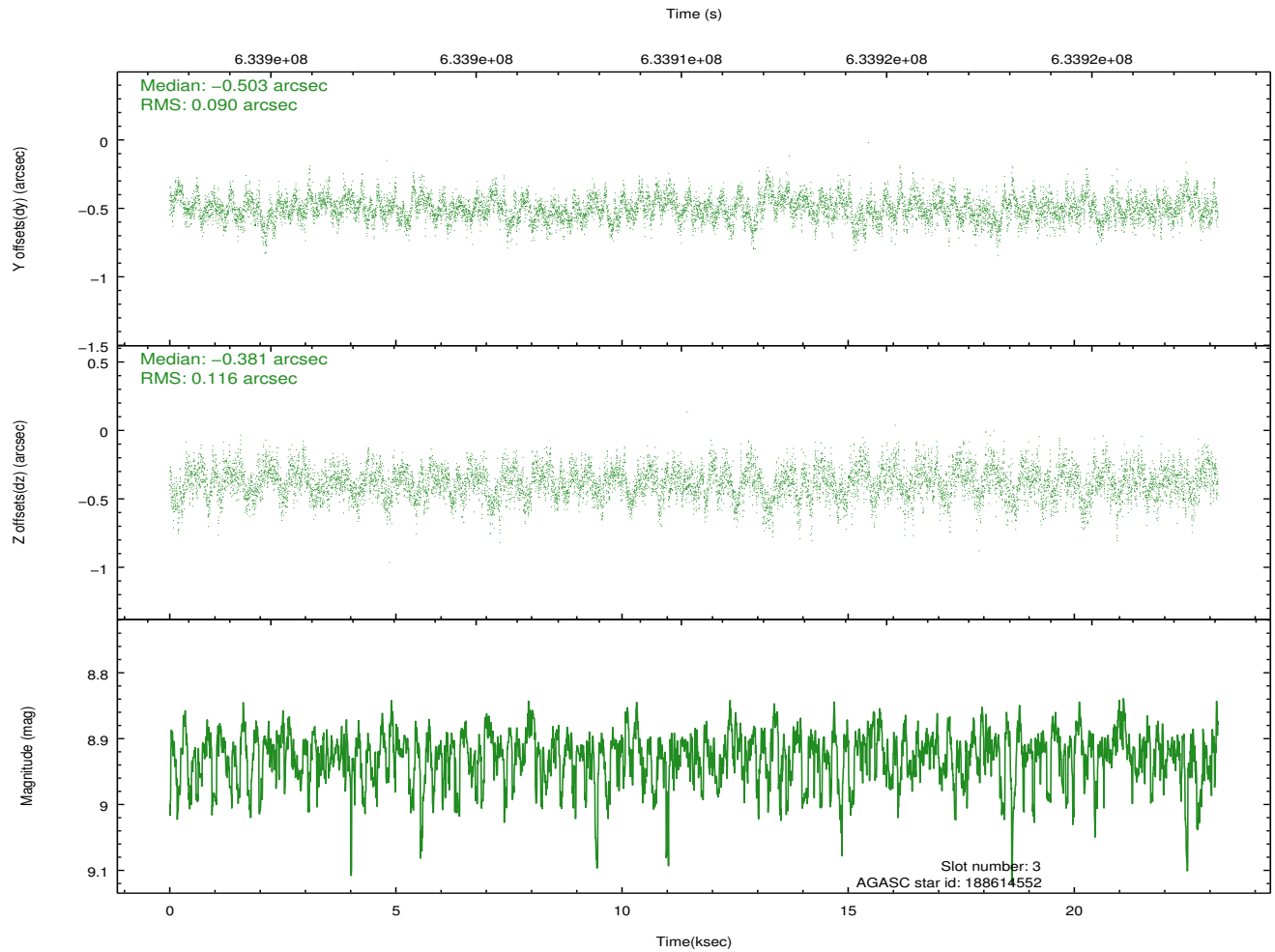
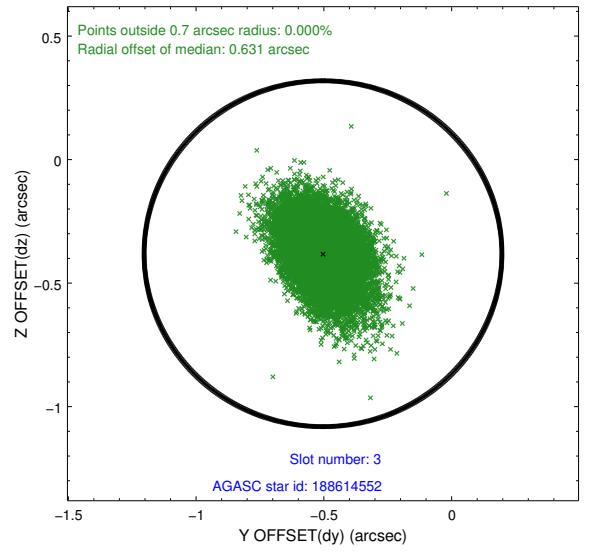
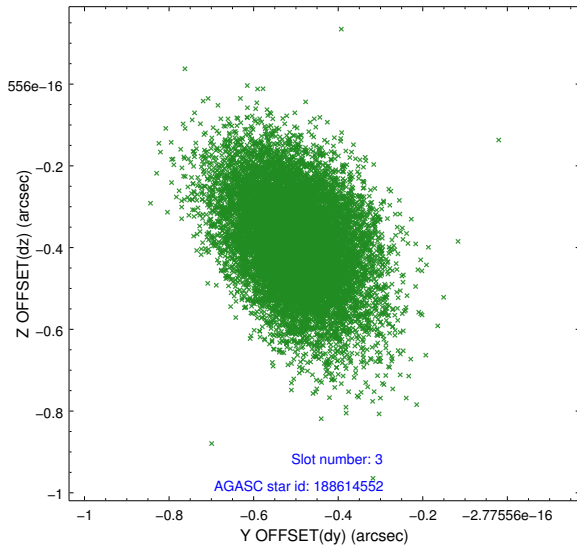


Slot Statistics

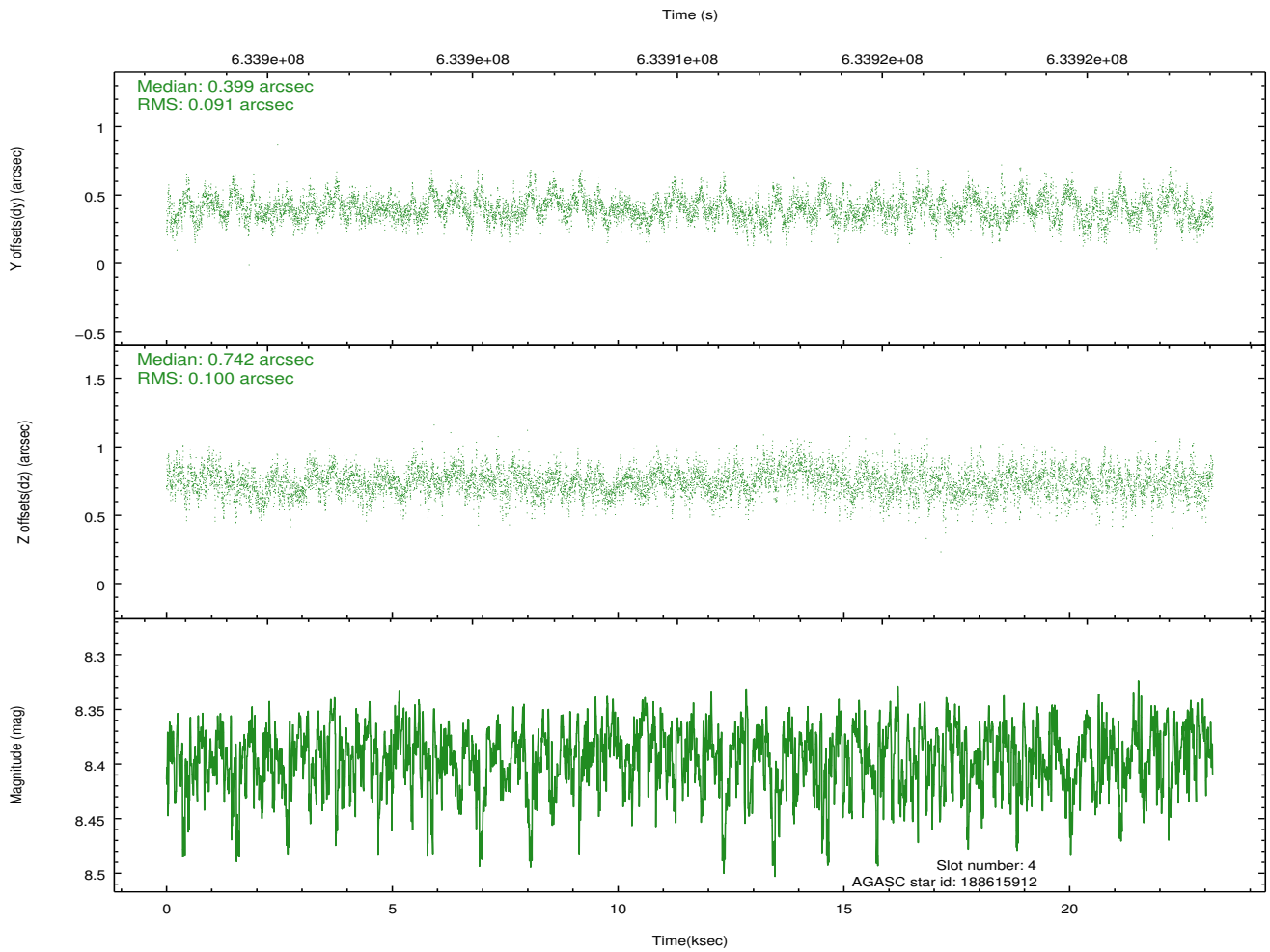
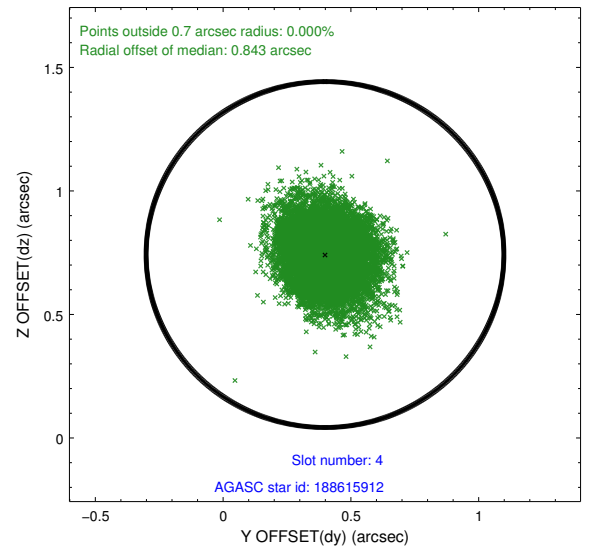
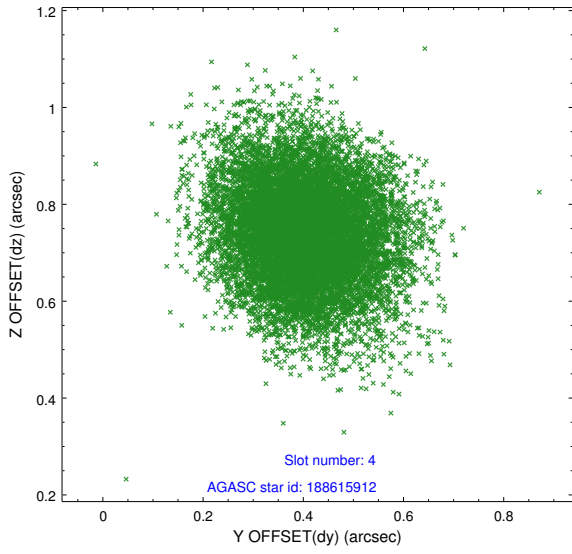
slot	status	used	id	mag	n_pts	med_dy	med_dz	dr1	dr2	ra	dec	mean_y	mean_z
0	FID		HRC-S-1	7.05	5653	-0.093	-0.200	0.010	0.031	0.000000	0.000000	-1175.40	-470.14
1	FID		HRC-S-2	7.02	5653	0.422	-0.129	0.019	0.049	0.000000	0.000000	1224.58	-462.63
2	FID		HRC-S-3	7.04	5653	0.061	0.026	0.018	0.039	0.000000	0.000000	-1177.81	559.54
3	GUIDE	used	188614552	8.92	11293	-0.503	-0.381	0.153	0.257	169.490657	21.468678	604.82	1015.49
4	GUIDE	used	188615912	8.39	11304	0.399	0.742	0.144	0.234	170.246329	20.858006	-1635.46	-1483.17
5	GUIDE	used	188616136	8.95	11292	-0.118	-0.460	0.156	0.271	169.590378	21.286471	-58.14	692.42
6	GUIDE	used	188623472	7.06	11307	0.082	0.067	0.117	0.201	169.895324	20.725289	-2094.89	-294.82
7	GUIDE	used	188614832	9.10	11295	0.132	0.037	0.199	0.361	170.375801	21.987686	2423.96	-1974.77

2.4 Star Slots

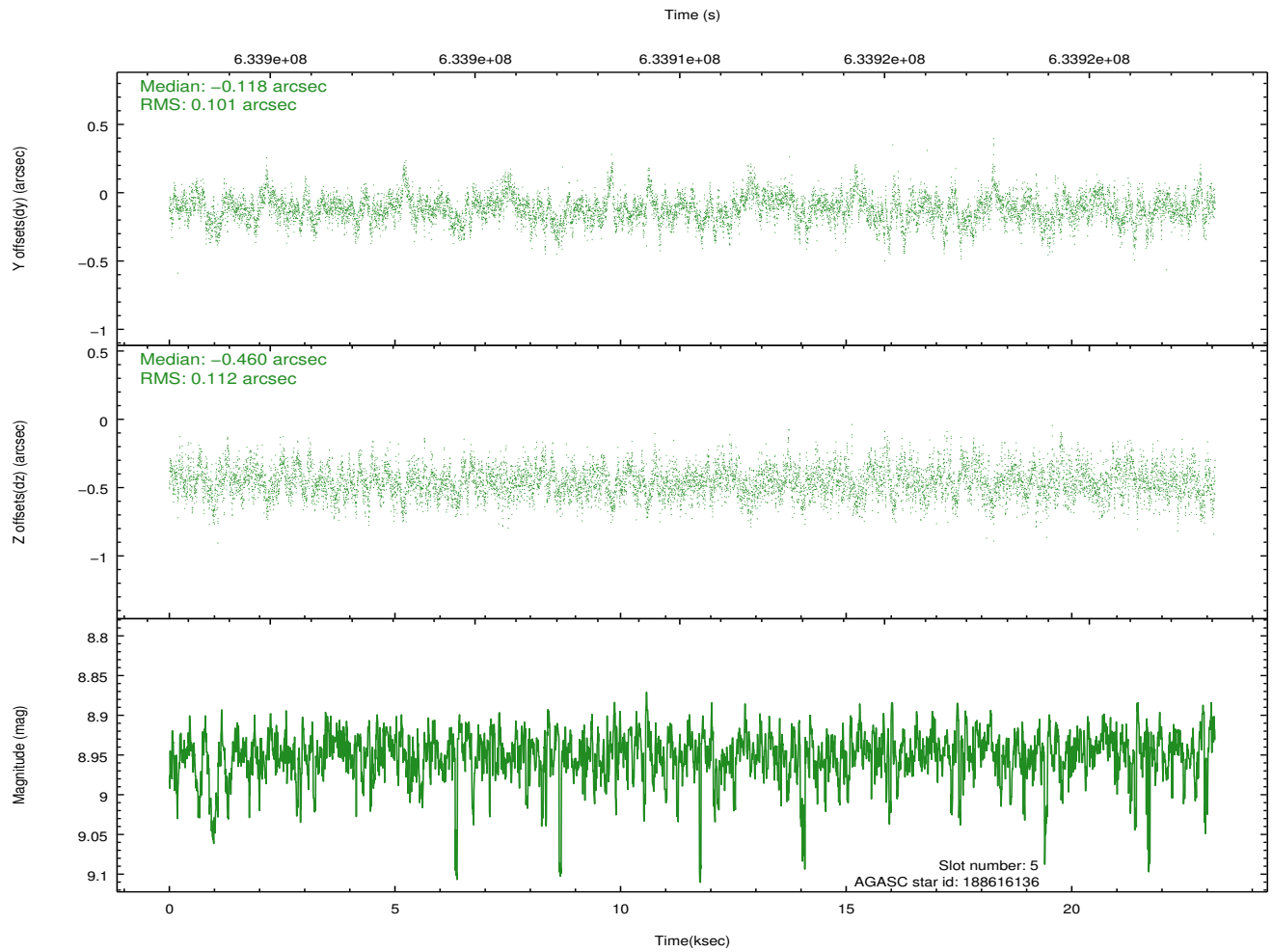
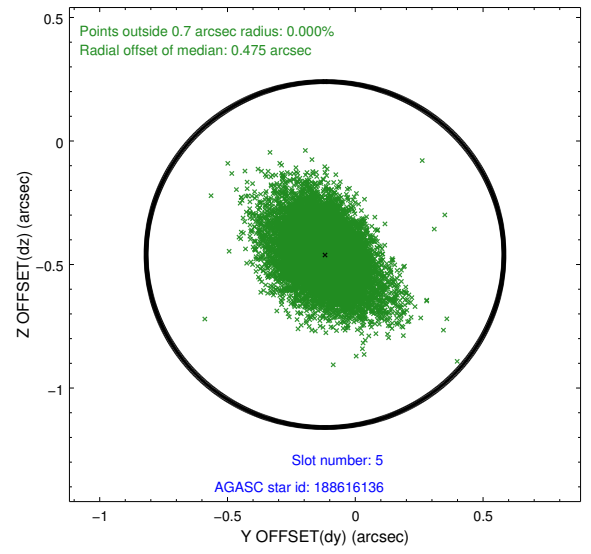
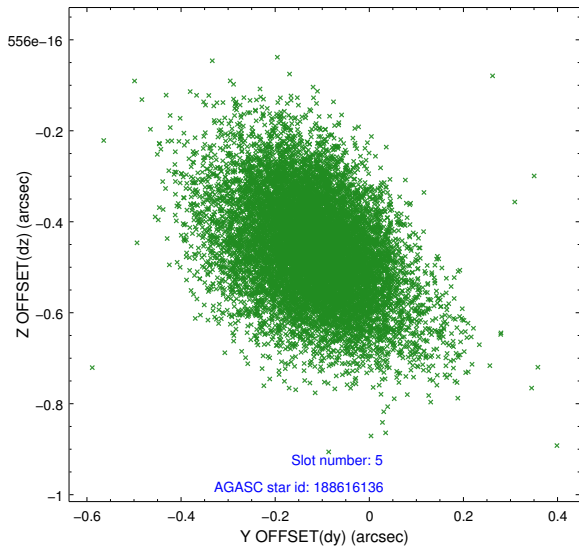
2.4.1 Slot 3



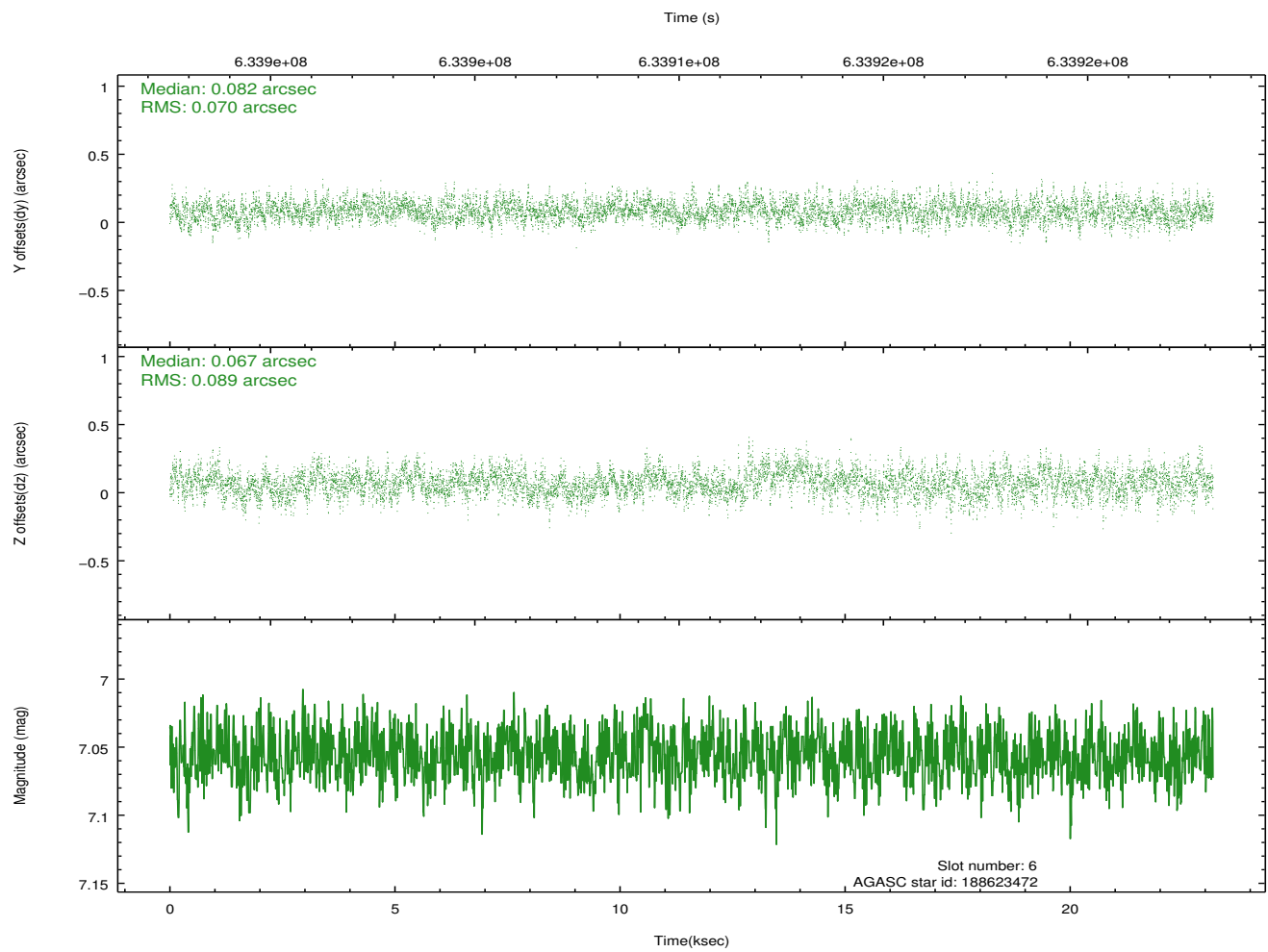
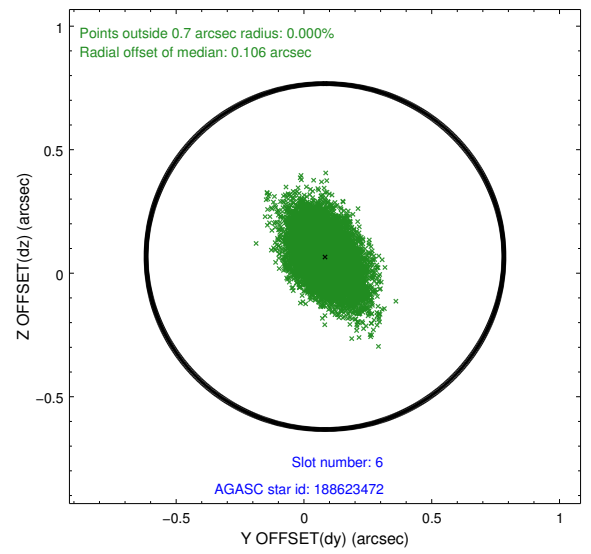
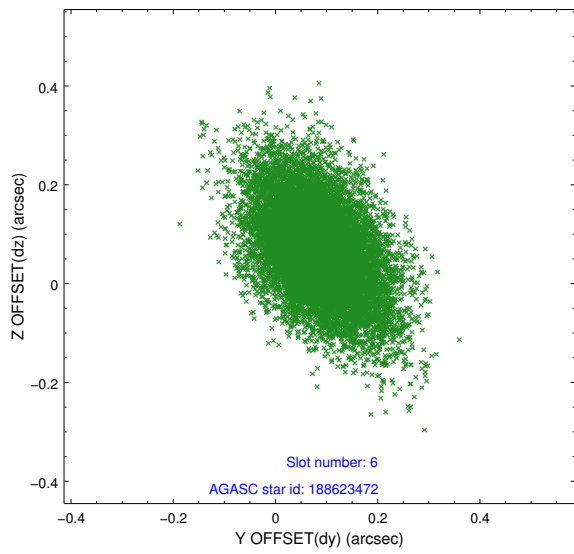
2.4.2 Slot 4



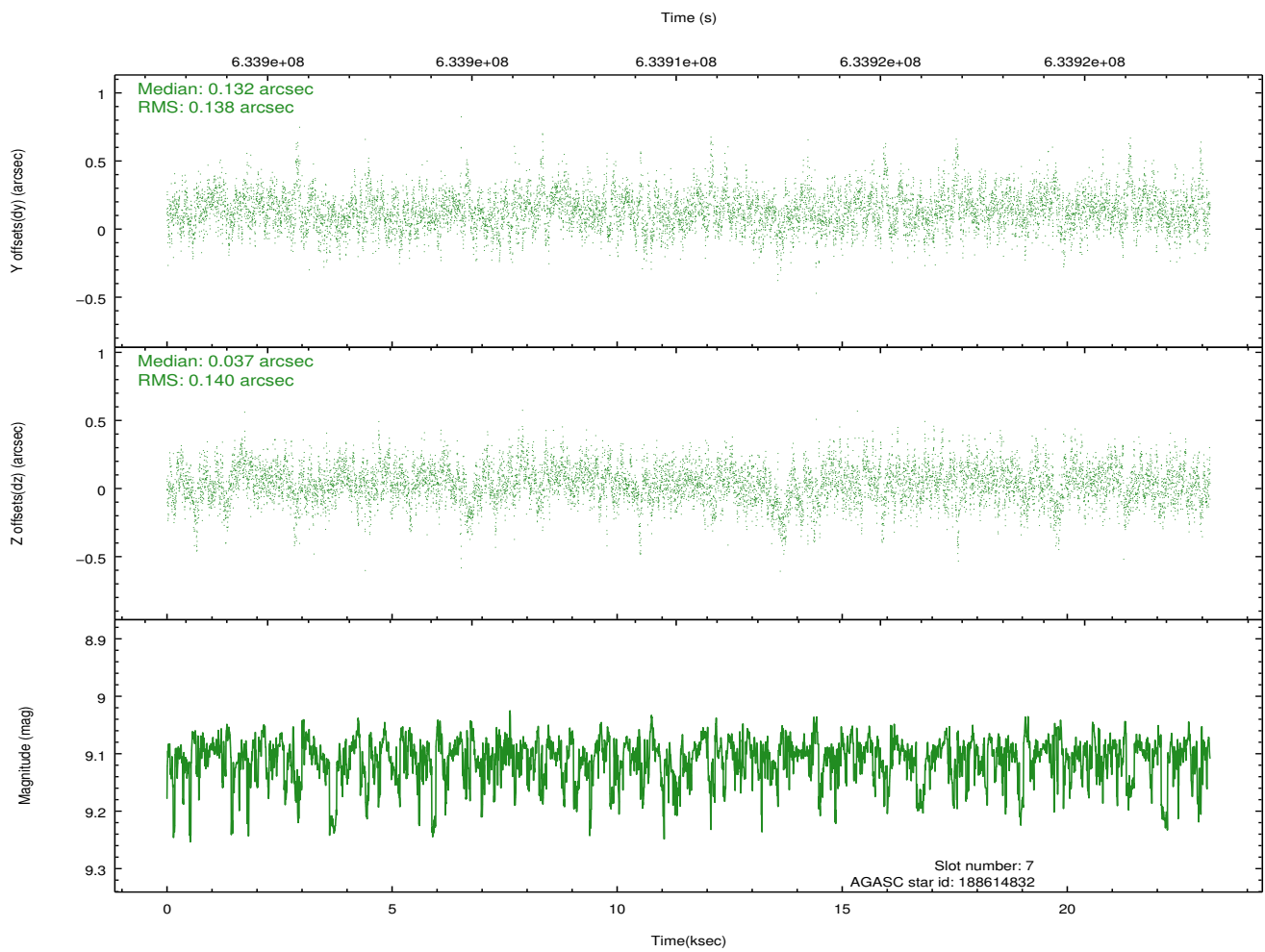
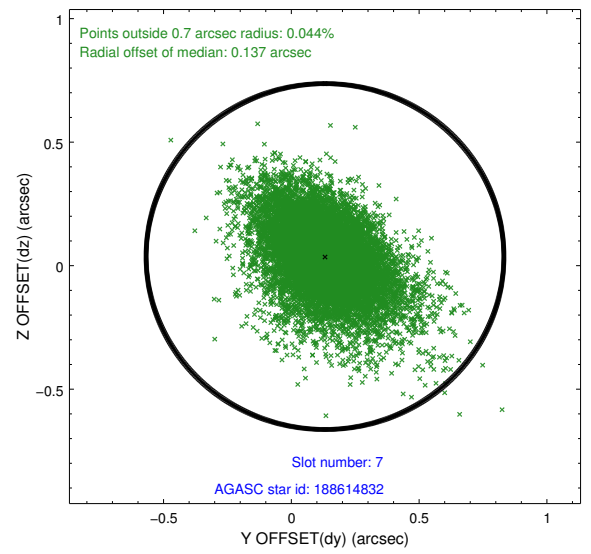
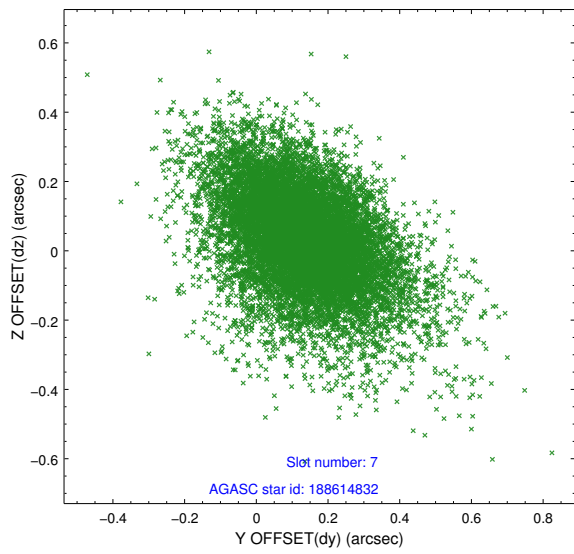
2.4.3 Slot 5



2.4.4 Slot 6

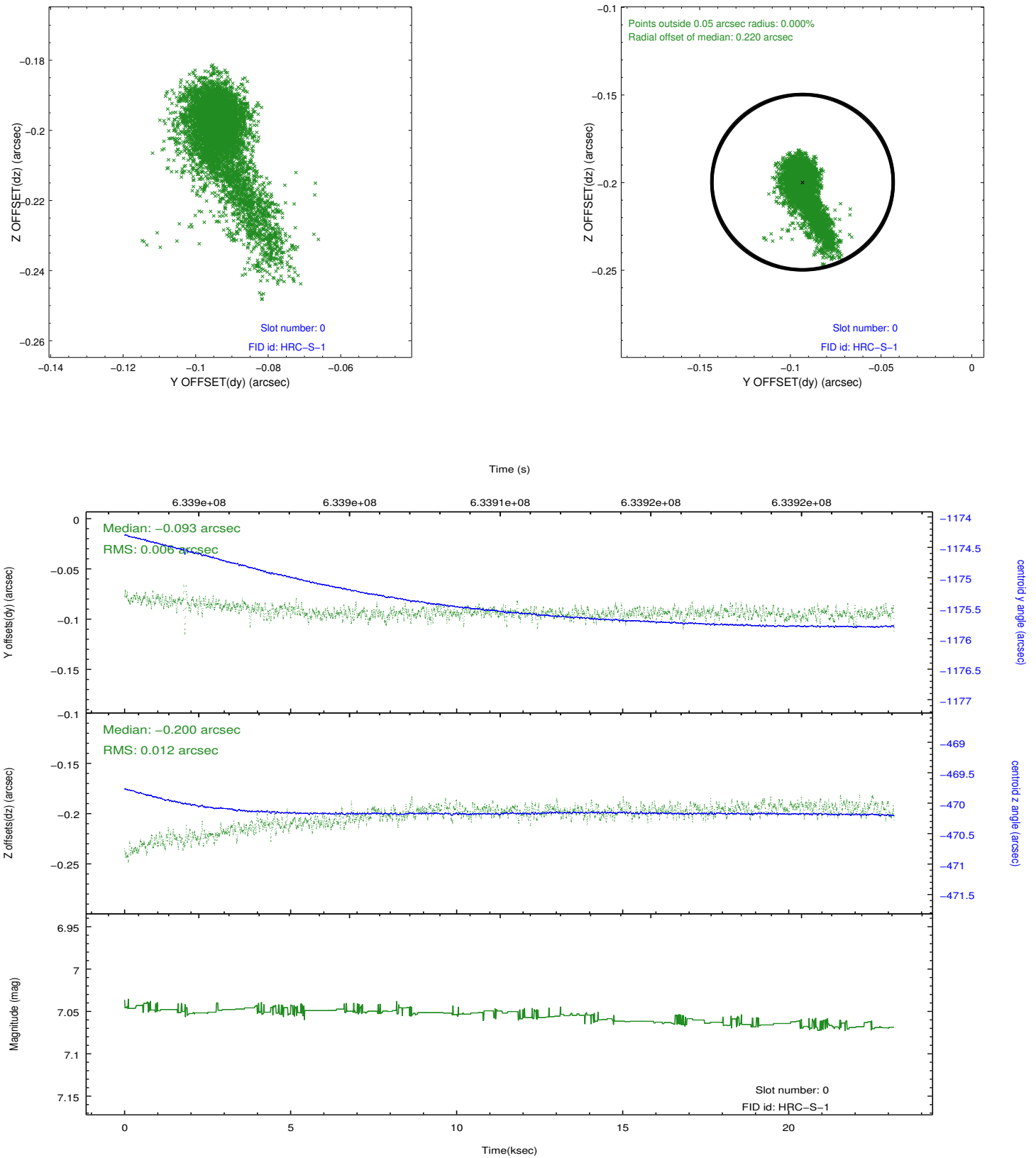


2.4.5 Slot 7

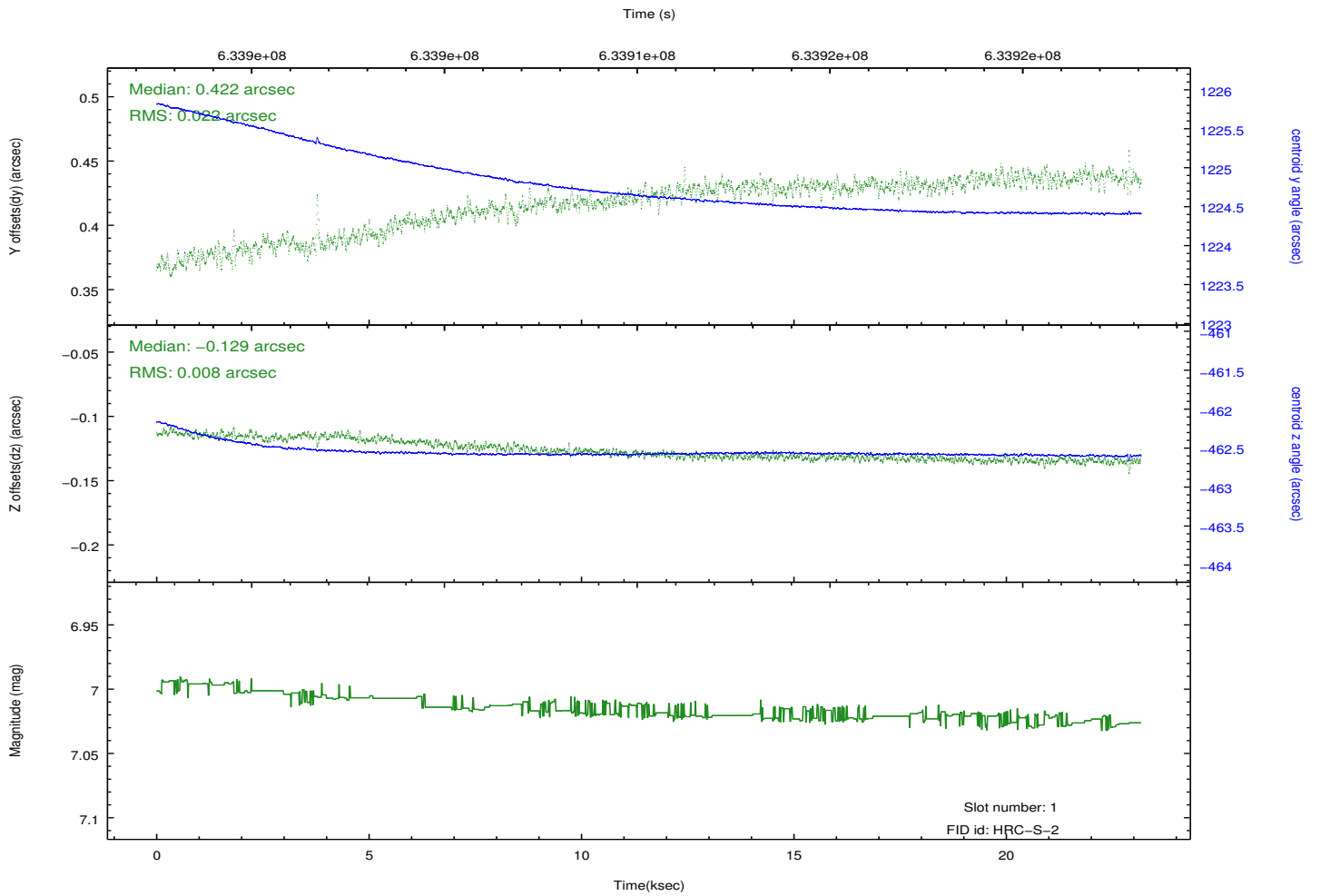
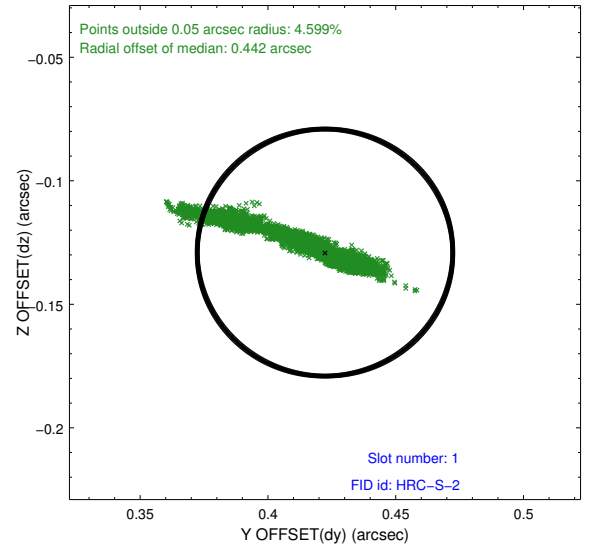
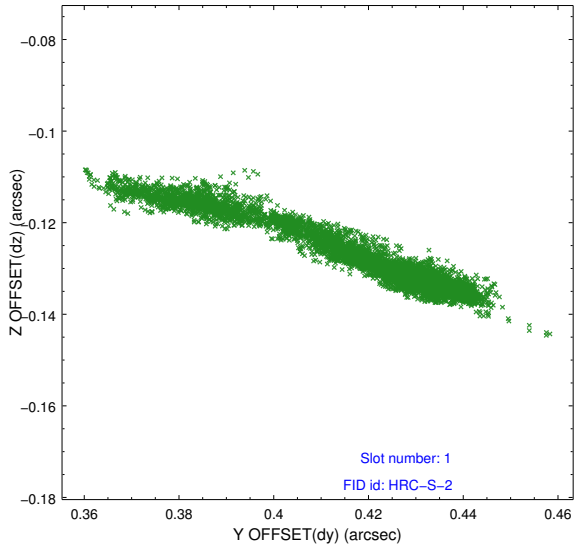


2.5 FID Slots

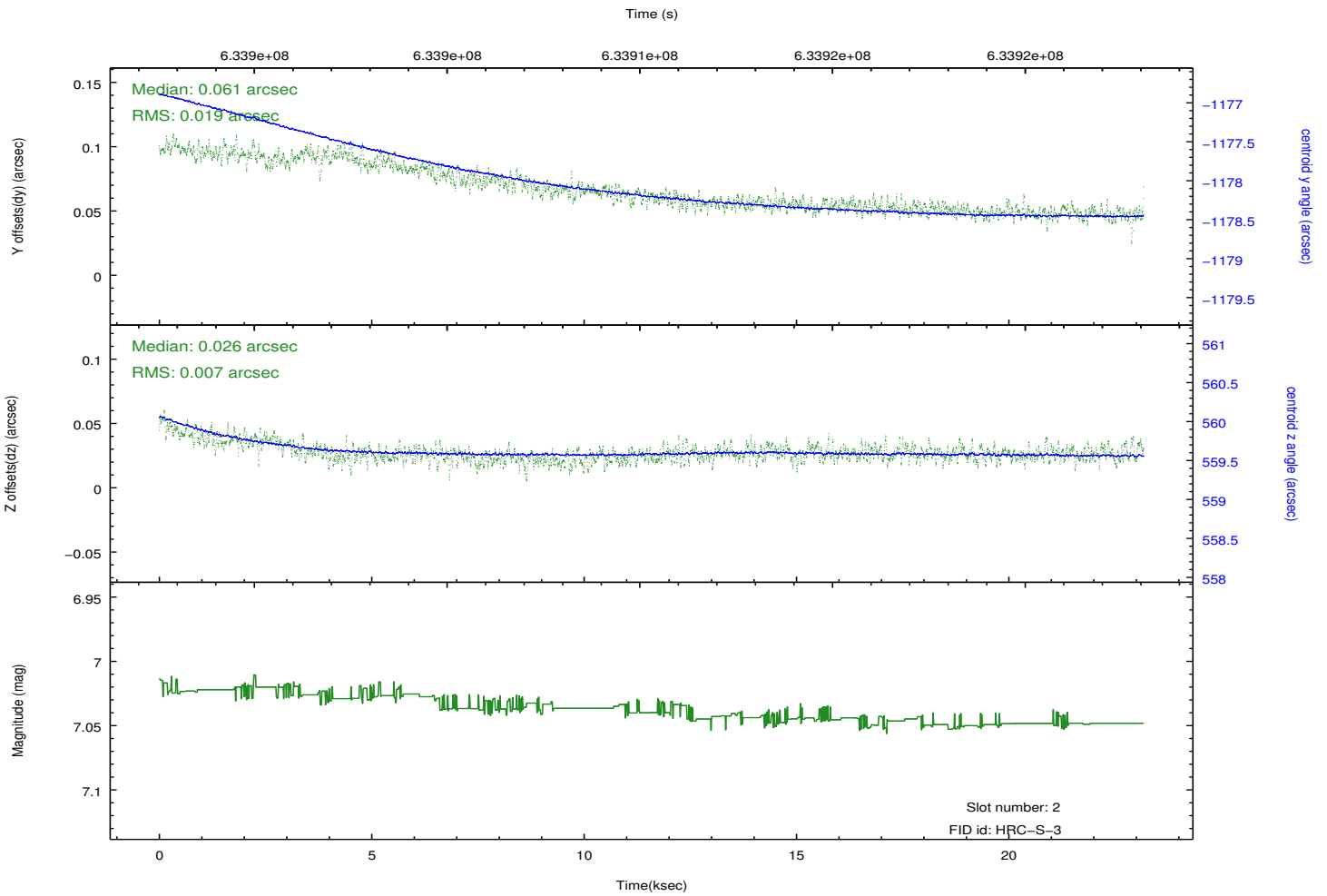
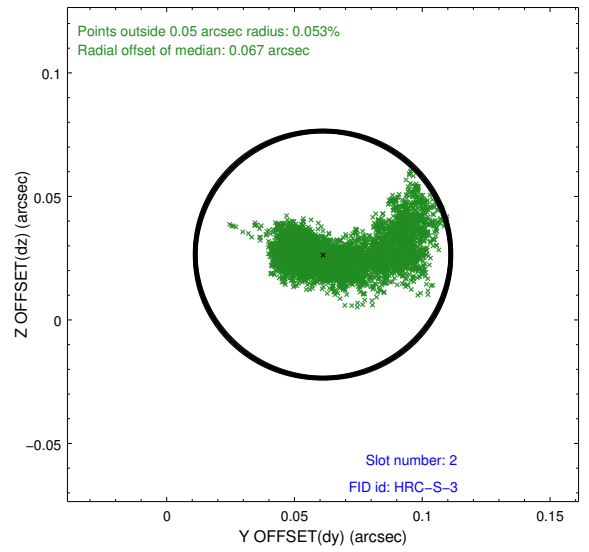
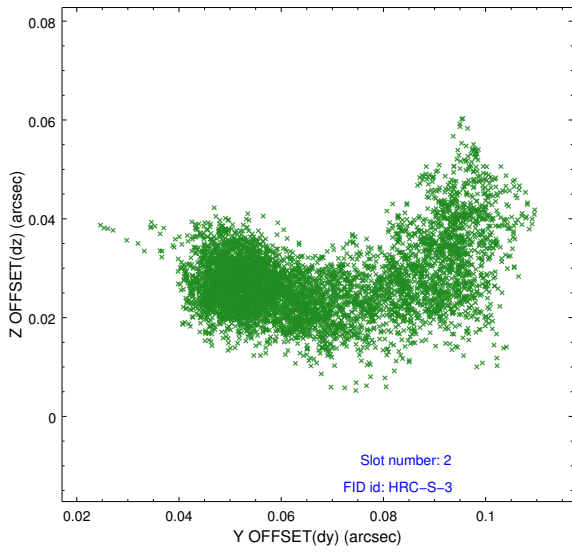
2.5.1 Slot 0



2.5.2 Slot 1

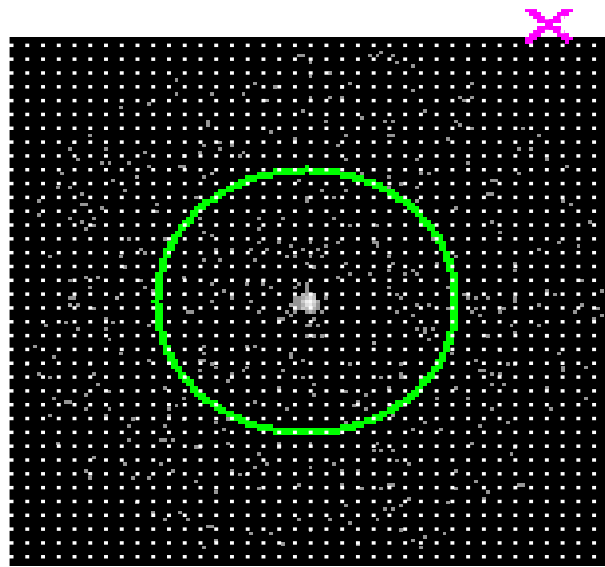


2.5.3 Slot 2

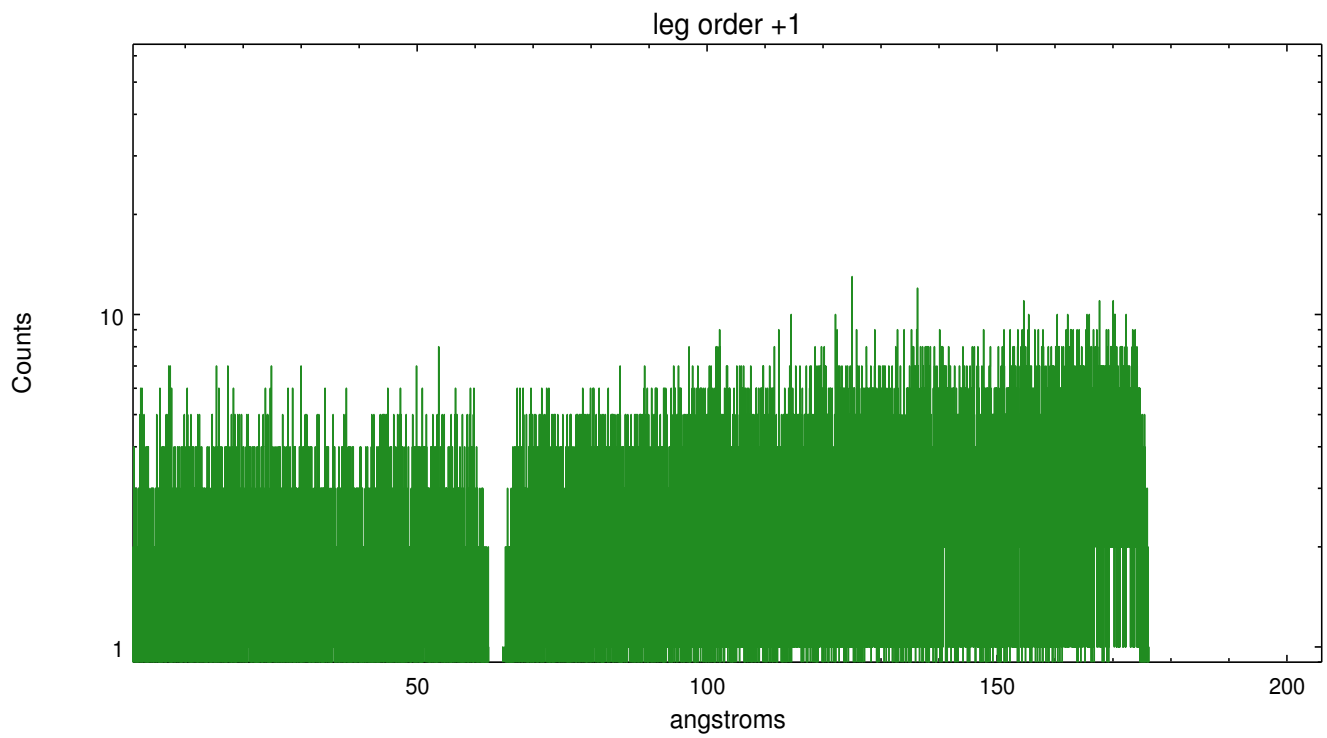
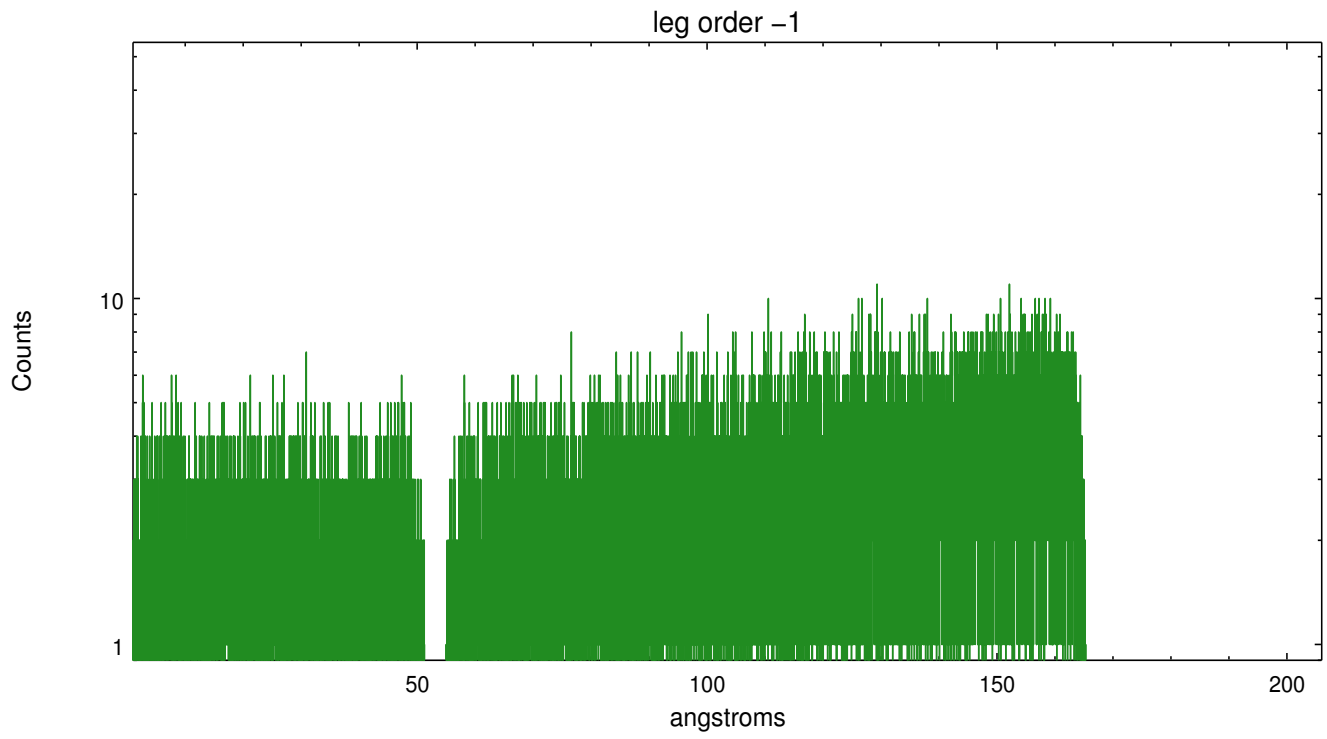


3 Gratings

3.1 LETG Arm



LETG Zero Order



A Summary

A.1 Status

V&V Scientist	Joy Nichols
V&V Date (YYYY-MM-DD)	2018.02.02
V&V Edition	1
V&V Disposition and Status	OK
V&V Charge Time	23.176276365161

A.2 Comments